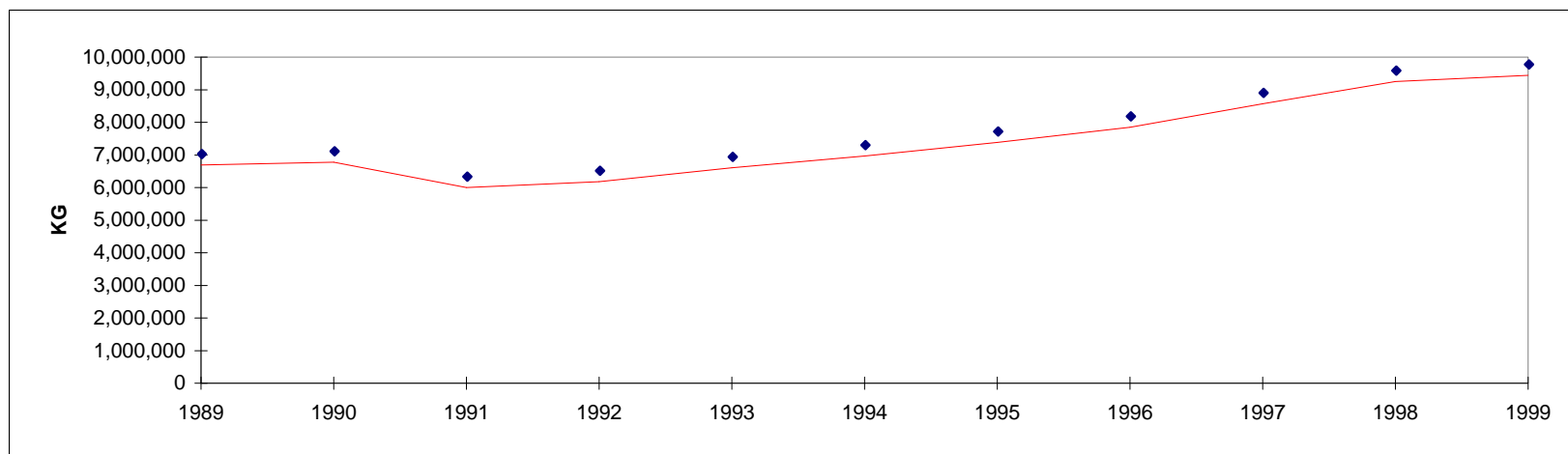


**DUCKS AND GEESE SLAUGHTERED IN REGISTERED STATIONS
NUMBERS AND EVisCERATED WEIGHT EQUIVALENT**

YEAR ANNÉE	Head - Têtes	Kg.
1989	2,755,684	6,687,364
1990	2,815,732	6,772,818
1991	2,616,566	6,002,848
1992	2,639,436	6,177,533
1993	2,835,356	6,608,352
1994	3,084,187	6,966,486
1995	3,364,875	7,380,287
1996	3,619,384	7,852,050
1997	3,984,759	8,571,532
1998	4,276,423	9,250,787
1999	4,457,468	9,441,755

**CANARDS ET OIES ABATTUES AUX POSTES ENREGISTRÉS
NOMBRE ET ÉQUIVALENT EN POIDS ÉVISCÉRÉ**

CANADA	1999	CANADA
	Head - Têtes	Kg.
January	305,332	616,353
February	301,072	617,315
March	345,456	719,849
April	350,054	733,838
May	380,874	815,599
June	375,203	753,415
July	385,838	772,277
August	379,911	776,258
September	412,597	919,834
October	425,079	1,005,998
November	406,155	900,510
December	389,897	810,509
1999	4,457,468	9,441,755
1998	4,276,423	9,250,787



Only aggregate figures published to protect confidentiality

Les chiffres sont regroupés de façon à protéger la confidentialité des données

Source: Canadian Food Inspection Agency, as compiled by AAFC, AID, Poultry Section
Agence canadienne d'inspection des aliments, compilé par AAC, DIA, Section de la volaille

Update as of / Dernière mise à jour: 2004/07/28