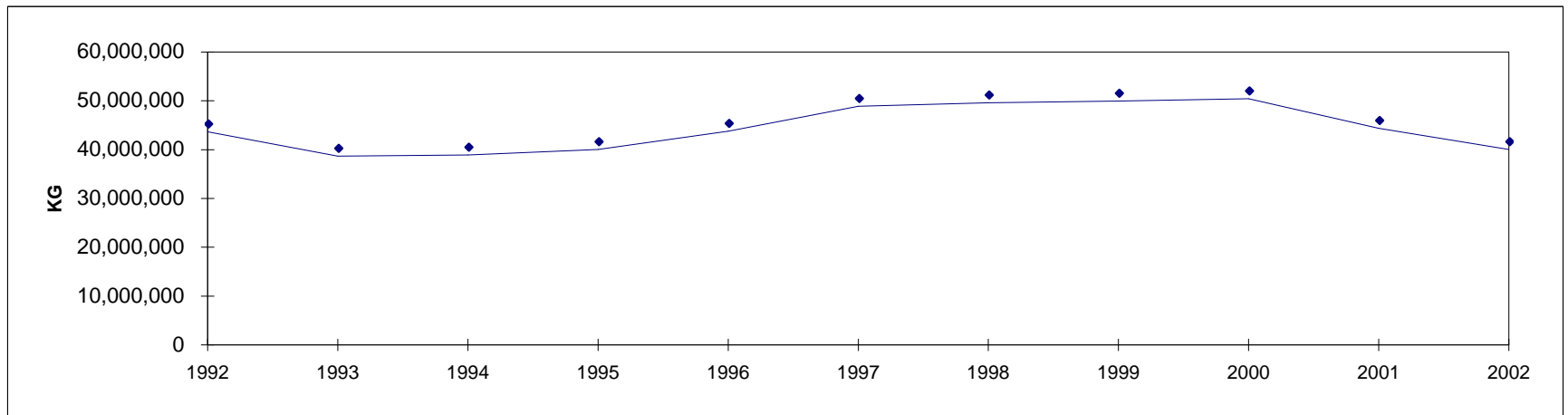


**MATURE CHICKEN SLAUGHTERED IN REGISTERED STATIONS
NUMBERS AND EVISCERATED WEIGHT EQUIVALENT**

MATURE CHICKEN - POULETS ADULTES

**POULETS ADULTES ABATTUS AUX POSTES ENREGISTRÉS
NOMBRE ET ÉQUIVALENT EN POIDS ÉVISCÉRÉ**

	CANNERS - CONSERVERIE		OTHERS - AUTRES		TOTAL		
	Head - Têtes	Kg.	Head - Têtes	Kg.	Head - Têtes	Kg.	
1992	25,451,351	27,531,249	5,877,561	16,104,338	31,328,912	43,635,587	1992
1993	23,846,726	25,677,006	4,720,122	12,973,134	28,566,848	38,650,140	1993
1994	25,581,326	27,308,226	4,186,517	11,575,283	29,767,843	38,883,509	1994
1995	27,792,908	29,052,283	3,942,411	10,958,145	31,735,319	40,010,428	1995
1996	31,977,079	32,987,070	3,958,959	10,816,318	35,936,038	43,803,388	1996
1997	38,245,399	38,551,552	3,878,155	10,365,071	42,123,554	48,916,623	1997
1998	39,498,734	39,450,988	3,762,880	10,164,699	43,261,614	49,615,687	1998
1999	38,481,398	38,829,471	4,050,864	11,156,597	42,532,262	49,986,068	1999
2000	37,964,185	38,283,276	4,473,569	12,177,188	42,437,754	50,460,464	2000
2001	33,139,439	33,668,211	3,931,323	10,719,116	37,070,762	44,387,328	2001
2002	28,039,001	28,692,864	4,132,250	11,333,606	32,171,248	40,026,471	2002



MATURE CHICKEN SLAUGHTERED IN REGISTERED STATIONS
NUMBERS AND EVISCERATED WEIGHT EQUIVALENT

2002
MATURE CHICKEN - POULETS ADULTES

POULETS ADULTES ABATTUS AUX POSTES ENREGISTRÉS
NOMBRE ET ÉQUIVALENT EN POIDS ÉVISCÉRÉ

CANNERS - CONSERVERIE		OTHERS - AUTRES		TOTAL	
Head - Têtes	Kg.	Head - Têtes	Kg.	Head - Têtes	Kg.

CANADA - CANADA

January	2,251,662	2,254,215	377,347	1,024,445	2,629,009	3,278,660	janvier
February	2,463,127	2,476,402	267,928	726,430	2,731,055	3,202,832	février
March	2,441,495	2,473,109	351,596	957,391	2,793,091	3,430,500	mars
April	2,805,212	2,868,826	266,576	727,152	3,071,788	3,595,978	avril
May	2,358,301	2,429,561	351,333	953,733	2,709,634	3,383,294	mai
June	2,519,689	2,548,773	343,493	940,945	2,863,182	3,489,718	juin
July	2,148,361	2,138,020	457,004	1,253,552	2,605,365	3,391,572	juillet
August	2,428,859	2,498,211	416,929	1,164,791	2,845,788	3,663,002	août
September	2,436,772	2,562,526	343,509	962,554	2,780,281	3,525,080	septembre
October	2,420,814	2,549,779	317,555	878,280	2,738,369	3,428,059	octobre
November	1,965,186	2,011,795	402,781	1,096,036	2,367,967	3,107,831	novembre
December	1,799,522	1,881,647	236,197	648,298	2,035,719	2,529,945	décembre
2002	28,039,000	28,692,864	4,132,248	11,333,607	32,171,248	40,026,471	2002
2001	33,139,439	33,668,211	3,931,323	10,719,117	37,070,762	44,387,328	2001

BRITISH COLUMBIA - COLOMBIE-BRITANNIQUE / ALBERTA

January	38,226	39,532	109,561	287,105	147,787	326,637	janvier
February	19,619	20,685	69,856	184,349	89,475	205,034	février
March	21,851	22,840	131,530	351,540	153,381	374,380	mars
April	30,652	37,001	106,890	288,293	137,542	325,294	avril
May	34,102	40,872	99,312	264,042	133,414	304,914	mai
June	43,377	46,575	80,071	203,686	123,448	250,261	juin
July	29,423	37,315	43,019	116,815	72,442	154,130	juillet
August	23,769	25,731	68,673	184,594	92,442	210,325	août
September	37,669	46,470	75,271	202,720	112,940	249,190	septembre
October	23,427	27,491	73,161	200,444	96,588	227,935	octobre
November	35,749	34,519	102,908	273,482	138,657	308,001	novembre
December	34,071	34,530	44,620	119,255	78,691	153,785	décembre
2002	371,935	413,561	1,004,872	2,676,325	1,376,807	3,089,886	2002
2001	181,768	210,646	919,378	2,450,830	1,101,146	2,661,476	2001

MATURE CHICKEN SLAUGHTERED IN REGISTERED STATIONS
NUMBERS AND EVISCERATED WEIGHT EQUIVALENT

2002
MATURE CHICKEN - POULETS ADULTES

POULETS ADULTES ABATTUS AUX POSTES ENREGISTRÉS
NOMBRE ET ÉQUIVALENT EN POIDS ÉVISCÉRÉ

CANNERS - CONSERVERIE		OTHERS - AUTRES		TOTAL	
Head - Têtes	Kg.	Head - Têtes	Kg.	Head - Têtes	Kg.

SASKATCHEWAN / MANITOBA

January	73,157	68,650	3,061	8,132	76,218	76,782	janvier
February	79,126	72,106	4,158	11,239	83,284	83,345	février
March	145,175	128,643	6,381	17,016	151,556	145,659	mars
April	168,509	148,315	30,712	86,422	199,221	234,737	avril
May	88,413	67,138	2,502	6,505	90,915	73,643	mai
June	102,998	83,030	18,630	46,668	121,628	129,698	juin
July	135,975	101,987	50,387	134,150	186,362	236,137	juillet
August	6,355	9,324	27,577	73,824	33,932	83,148	août
September	146	174	18,092	48,884	18,238	49,058	septembre
October	32,796	27,235	3,593	9,592	36,389	36,827	octobre
November	165	177	41,268	110,674	41,433	110,851	novembre
December	0	0	22,230	63,794	22,230	63,794	décembre
2002	832,815	706,779	228,591	616,900	1,061,406	1,323,679	2002
2001	1,391,004	1,361,247	201,837	578,164	1,592,841	1,939,411	2001

ONTARIO

January	1,787,647	1,788,423	166,192	461,695	1,953,839	2,250,118	janvier
February	1,896,099	1,913,244	123,266	335,830	2,019,365	2,249,074	février
March	2,090,456	2,138,173	116,214	312,949	2,206,670	2,451,122	mars
April	2,537,305	2,600,874	95,729	262,231	2,633,034	2,863,105	avril
May	2,192,006	2,271,502	161,863	441,857	2,353,869	2,713,359	mai
June	2,310,195	2,358,257	154,936	433,478	2,465,131	2,791,735	juin
July	1,972,849	1,989,486	292,690	799,048	2,265,539	2,788,534	juillet
August	2,359,632	2,412,508	206,415	584,989	2,566,047	2,997,497	août
September	2,334,732	2,445,400	166,698	472,705	2,501,430	2,918,105	septembre
October	2,358,852	2,488,300	164,520	455,966	2,523,372	2,944,266	octobre
November	1,819,050	1,863,302	173,851	470,644	1,992,901	2,333,946	novembre
December	1,551,062	1,635,421	139,233	386,680	1,690,295	2,022,101	décembre
2002	25,209,885	25,904,890	1,961,607	5,418,072	27,171,492	31,322,962	2002
2001	27,503,875	28,025,869	1,694,512	4,573,961	29,198,387	32,599,830	2001

QUEBEC - QUÉBEC

January	317,054	315,935	85,302	233,200	402,356	549,135	janvier
February	399,612	399,038	63,631	175,599	463,243	574,637	février
March	184,013	183,453	97,471	275,886	281,484	459,339	mars
April	12,787	13,766	33,245	90,206	46,032	103,972	avril
May	2,414	3,127	87,656	241,329	90,070	244,456	mai
June	24,616	26,495	71,046	200,471	95,662	226,966	juin
July	4,691	5,181	70,908	203,539	75,599	208,720	juillet
August	7,421	8,369	97,855	272,005	105,276	280,374	août
September	11,386	13,025	83,448	238,245	94,834	251,270	septembre
October	0	0	76,281	212,278	76,281	212,278	octobre
November	110,222	113,797	76,780	217,978	187,002	331,775	novembre
December	197,776	198,215	30,114	78,569	227,890	276,784	décembre
2002	1,271,992	1,280,401	873,737	2,439,305	2,145,729	3,719,706	2002
2001	3,847,465	3,841,451	1,062,740	2,983,565	4,910,205	6,825,016	2001

**MATURE CHICKEN SLAUGHTERED IN REGISTERED STATIONS
NUMBERS AND EVISCERATED WEIGHT EQUIVALENT**

2002

MATURE CHICKEN - POULETS ADULTES

**POULETS ADULTES ABATTUS AUX POSTES ENREGISTRÉS
NOMBRE ET ÉQUIVALENT EN POIDS ÉVISCÉRÉ**

CANNERS - CONSERVERIE		OTHERS - AUTRES		TOTAL	
Head - Têtes	Kg.	Head - Têtes	Kg.	Head - Têtes	Kg.

ATLANTIC PROVINCES - PROVINCES DE L'ATLANTIQUE

January	35,578	41,675	13,231	34,313	48,809	75,988	janvier
February	68,671	71,329	7,017	19,413	75,688	90,742	février
March	0	0	0	0	0	0	mars
April	55,959	68,870	0	0	55,959	68,870	avril
May	41,366	46,922	0	0	41,366	46,922	mai
June	38,503	34,416	18,810	56,642	57,313	91,058	juin
July	5,423	4,051	0	0	5,423	4,051	juillet
August	31,682	42,279	16,409	49,379	48,091	91,658	août
September	52,839	57,457	0	0	52,839	57,457	septembre
October	5,739	6,753	0	0	5,739	6,753	octobre
November	0	0	7,974	23,258	7,974	23,258	novembre
December	16,613	13,481	0	0	16,613	13,481	décembre
2002	352,373	387,233	63,441	183,005	415,814	570,238	2002
2001	215,327	228,998	52,856	132,597	268,183	361,595	2001

Atlantic provinces include: New Brunswick, Nova Scotia
Prince Edward Island and Newfoundland

Provinces de l'atlantique comprennent: le Nouveau-Brunswick,
la Nouvelle-Écosse, l'Île-du-Prince-Édouard et Terre-Neuve.

Printed as of / Imprimé le: 2004/09/07 11:46 AM

Source: Canadian Food Inspection Agency, as compiled by AAFC, AID, Poultry Section
Agence canadienne d'inspection des aliments, compilé par AAC, DIA, Section de la volaille