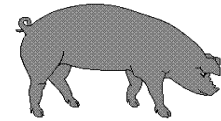




# Hog Statistics at a Glance CANADA



For the Week Ending April 9, 2005

| Federal Slaughter              | weekly kill<br># head | CUMULATIVE TOTALS TO DATE |                |             |
|--------------------------------|-----------------------|---------------------------|----------------|-------------|
|                                |                       | 2005                      | 2004           | % chg       |
|                                |                       | '000 head                 |                |             |
| West                           | 177,941               | 2,421.0                   | 2,334.0        | 3.7         |
| Ontario                        | 80,421                | 1,149.0                   | 1,152.0        | -0.3        |
| Quebec                         | 165,272               | 2,323.0                   | 2,247.0        | 3.4         |
| Atlantic                       | 8,612                 | 123.0                     | 139.0          | -11.5       |
| <b>CANADA</b>                  | <b>432,246</b>        | <b>6,016.0</b>            | <b>5,872.0</b> | <b>2.5</b>  |
| <b>Pork Production (t)</b>     | <b>37,822</b>         | <b>526,400</b>            | <b>512,038</b> | <b>2.8</b>  |
| <b>Estimated Sow Slaughter</b> | <b>2,493</b>          | <b>32,723</b>             | <b>35,321</b>  | <b>-7.4</b> |

| Weekly Prices \$/c/kg (index 100) | 2005   |        |       |
|-----------------------------------|--------|--------|-------|
|                                   | 2004   | % chg  |       |
| Ontario*                          | 148.55 | 160.49 | -7.4  |
| Quebec                            | 156.66 | 170.11 | -7.9  |
| Alberta                           | 145.50 | 152.60 | -4.7  |
| Manitoba*                         | 150.00 | 160.00 | -6.3  |
| British Columbia                  | 159.10 | 174.80 | -9.0  |
| Saskatchewan                      | 136.00 | 143.40 | -5.2  |
| Nova Scotia                       | 151.98 | 167.62 | -9.3  |
| Prince Ed. Is.                    | 142.60 | 162.34 | -12.2 |
| New Brunswick                     | 147.48 | 163.12 | -9.6  |

\*estimate

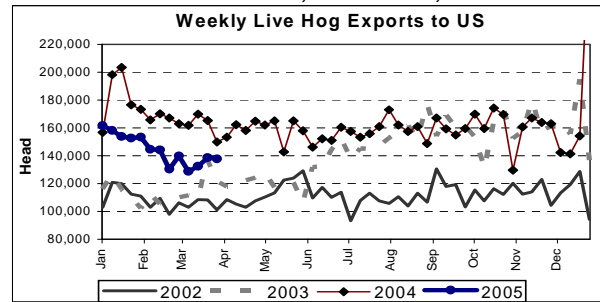
## PORK EXPORTS YTD for the period of January to February 28, 2005

| (Metric Tonnes)                         | 2005           | 2004           | % chg       |
|---|----------------|----------------|-------------|
| <b>FRESH, FROZEN AND PROCESSED PORK</b> |                |                |             |
| United States                           | 61,035         | 61,180         | (0.2)       |
| Japan                                   | 38,944         | 32,338         | 20.4        |
| Australia                               | 8,646          | 5,526          | 56.5        |
| Russia                                  | 3,748          | 2,609          | 43.7        |
| Mexico                                  | 10,562         | 8,446          | 25.1        |
| South Korea                             | 10,270         | 3,912          | 162.5       |
| China                                   | 5,169          | 2,958          | 74.7        |
| Taiwan                                  | 2,778          | 3,848          | (27.8)      |
| Cuba                                    | 288            | 1,312          | (78.0)      |
| New Zealand                             | 659            | 339            | 94.4        |
| Other                                   | 14,246         | 13,645         | 4.4         |
| <b>Total</b>                            | <b>156,345</b> | <b>136,113</b> | <b>14.9</b> |

Source: STATISTICS CANADA

## LIVE HOG EXPORTS TO U.S.

|                             | YTD 05           | YTD 04           | % chg        |
|-----------------------------|------------------|------------------|--------------|
| <b>HOGS (head)</b>          |                  |                  |              |
| Barrows/Gilts/Sows          | 625,453          | 781,564          | -20.0        |
| Feeder Pigs                 | 1,250,489        | 1,440,119        | -13.2        |
| <b>Total</b>                | <b>1,875,942</b> | <b>2,221,683</b> | <b>-15.6</b> |
| <b>Week Ending 05-04-02</b> |                  |                  |              |
| Barrows/Gilts/Sows          | 42,379           | 51,058           | -17.0        |
| Feeder Pigs                 | 95,231           | 98,905           | -3.7         |
| <b>Total</b>                | <b>137,610</b>   | <b>149,963</b>   | <b>-8.2</b>  |



Source: USDA-APHIS

| (Metric Tonnes) preliminary                     | 2005   | 2004   | % chg |
|---|--------|--------|-------|
| <b>IMPORTS YTD for the week ending 05-04-02</b> |        |        |       |
| <b>FRESH &amp; FROZEN PORK</b>                  |        |        |       |
| United States                                   | 19,772 | 19,782 | -0.1  |
| Denmark   | 199    | 186    | 7.0   |
| Other   | 27     | 2      |       |

|                                   | 2005          | 2004          | % chg      |
|-----------------------------------|---------------|---------------|------------|
| <b>PROCESSED &amp; OTHER PORK</b> |               |               |            |
| United States                     | 3,942         | 3,704         | 6.4        |
| Denmark                           | -             | -             |            |
| Other                             | 34            | 29            | 17.2       |
| <b>TOTAL IMPORTS</b>              | <b>23,974</b> | <b>23,703</b> | <b>1.1</b> |

## Frozen Pork from the European Union:

The TRQ level has established for frozen meat of pork originating from EU countries, for the twelve month period August 1 to July 31, 2005. Imports in excess of 2,970,000 kg in the twelve month period are subject to a surtax in an amount equal to the value for the duty (100%) determined in accordance with the Customs Act.

|                  | Permits issued as of April 9, 2005 |           |       |
|------------------|------------------------------------|-----------|-------|
|                  | 2004/2005                          | 2003/2004 | % chg |
| Utilization (kg) | 2,969,899                          | 2,970,000 | 0.0   |
| Balance (kg)     | 101                                | -         |       |
| % Utilization    | 100.0%                             | 100.0%    | (0.0) |

Prepared by: Red Meat Section, Agriculture and Agri-Food Canada

Contact: Patti Negrave (613) 759-6216 or see us at: <http://www.agr.ca/redmeat>



## Hog Statistics at a Glance CANADA

### Canadian Hog Slaughter by Province of Origin

#### Total Slaughter Year to Date April 9, 2005

#### Week ending April 9, 2005

|                      | 2005             | 2004             | % chg      | 2005           | 2004           | % chg      |
|----------------------|------------------|------------------|------------|----------------|----------------|------------|
| British Columbia     | 62,629           | 67,585           | -7.3       | 4,181          | 4,627          | -9.6       |
| Alberta              | 949,762          | 946,314          | 0.4        | 69,957         | 68,796         | 1.7        |
| Saskatchewan         | 373,314          | 368,367          | 1.3        | 25,837         | 26,872         | -3.9       |
| Manitoba             | 1,146,258        | 1,070,442        | 7.1        | 86,837         | 76,647         | 13.3       |
| Ontario              | 1,458,648        | 1,421,827        | 2.6        | 107,375        | 103,230        | 4.0        |
| Quebec               | 2,126,204        | 2,101,116        | 1.2        | 146,215        | 152,304        | -4.0       |
| New Brunswick        | 43,201           | 43,455           | -0.6       | 3,966          | 2,805          | 41.4       |
| Nova Scotia          | 47,596           | 53,928           | -11.7      | 3,167          | 3,661          | -13.5      |
| Prince Edward Island | 58,795           | 63,376           | -7.2       | 3,733          | 4,770          | -21.7      |
| <b>CANADA</b>        | <b>6,266,407</b> | <b>6,136,410</b> | <b>2.1</b> | <b>451,268</b> | <b>443,712</b> | <b>1.7</b> |

## UNITED STATES

### Year To Date for the Week Ending April 9, 2005

#### Supply Summary

|                         | 2005   | 2004   | % chg |
|-------------------------|--------|--------|-------|
| Slaughter ('000 head)   | 27,788 | 28,193 | -1.4  |
| Slaughter for the week  | 1,984  | 1,973  | 0.6   |
| Avg Dressed Wt (lbs)    | 271    | 268    | 1.1   |
| Pork Produced (mil lbs) | 5,590  | 5,638  | -0.9  |

Source: USDA-APHIS

#### Weekly US Prices (\$/cwt)

|                  | 2005  | 2004  | % chg |
|------------------|-------|-------|-------|
| South St. Joseph | 47.75 | 43.50 | 9.8   |
| Sioux Falls      | 48.35 | 44.35 | 9.0   |
| Oklahoma City    | 44.00 | 42.50 | 3.5   |
| National Cost    | 66.76 | 66.51 | 0.4   |

(51-54% Lean Yield Basis)

### LEADING MARKETS FOR U.S. PORK PLUS PORK VARIETY MEAT EXPORTS (January-February 2005)

| COUNTRY        | Year to date           |             |       | COUNTRY                 | Year to date           |                |             |
|----------------|------------------------|-------------|-------|-------------------------|------------------------|----------------|-------------|
|                | Quantity (Metric Tons) |             |       |                         | Quantity (Metric Tons) |                |             |
|                | 1/05 - 2/05            | 1/04 - 2/04 | % Chg |                         | 1/05 - 2/05            | 1/04 - 2/04    | % Chg       |
| Japan          | 54,274                 | 47,028      | 15.4  | Taiwan                  | 3,617                  | 7,835          | -53.8       |
| Mexico         | 52,071                 | 52,142      | -0.1  | Central & South America | 3,385                  | 3,795          | -10.8       |
| Canada         | 18,776                 | 19,878      | -5.5  | Korea                   | 12,443                 | 3,155          | 294.4       |
| China          | 11,936                 | 3,678       | 224.5 | Caribbean               | 3,231                  | 1,293          | 149.9       |
| Hong Kong      | 942                    | 2,777       | -66.1 | Eastern Europe          | 2,125                  | 866            | 145.4       |
| Russia         | 3,953                  | 2,202       | 79.5  |                         |                        |                |             |
| European Union | 1,034                  | 1,675       | -38.3 | <b>World Total</b>      | <b>172,185</b>         | <b>148,220</b> | <b>16.2</b> |

Source: FAS, USDA