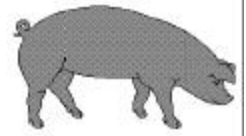




Hog Statistics at a Glance CANADA



For the Week Ending August 10, 2002

Federal Slaughter	weekly kill # head	CUMULATIVE TOTALS TO DATE		
		2002 '000 head	2001	% chg
West	139,614	4,838.0	4,448.0	8.8
Ontario	64,342	2,366.0	2,204.0	7.4
Quebec	153,726	4,875.0	4,697.0	3.8
Atlantic	9,618	322.0	311.0	3.5
CANADA	367,300	12,401.0	11,660.0	6.4
Pork Production (t)	31,349	1,085,088	1,009,756	7.5
Estimated Sow Slaughter	3,153	100,998	118,030	-14.4

Weekly Prices \$/kg (index 100)	2002		
	2001	% chg	
Ontario 102.5%	1.54	2.08	-26.0
Quebec	1.52	2.06	-26.2
Alberta	1.39	1.93	-28.0
Manitoba*	1.55	1.95	-20.5
British Columbia	1.70	2.18	-22.0
Saskatchewan	1.36	1.88	-27.7
Nova Scotia	1.67	2.06	-18.9
Prince Ed. Is.	1.61	2.06	-21.8
New Brunswick	1.62	2.02	-19.8

*estimate

PORK EXPORTS

YTD for week ending June 15, 2002

(Metric Tonnes)	2002	2001	% chg
FRESH & FROZEN PORK			
United States	154,917	132,829	16.6
Japan	92,017	90,524	1.6
Mexico	18,528	23,691	-21.8
Korea	15,124	12,869	17.5
Other	64,522	75,766	-14.8
PROCESSED PORK			
United States	32,744	26,176	25.1
Japan	597	595	0.3
Mexico	490	169	189.9
Korea	2	1	100.0
Other	3,475	3,241	7.2
TOTAL PORK EXPORTS	382,416	365,861	4.5
TOTAL FAT EXPORTS	24,870	30,095	-17.4

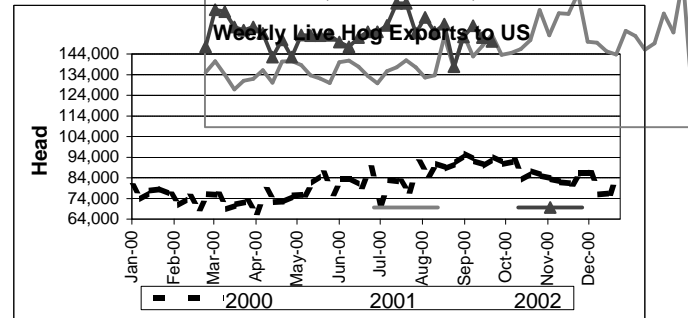
Source: CFIA & USDA

LIVE HOG EXPORTS TO U.S.

HOGS (head)	YTD 02	YTD 01	% chg
Barrows/Gilts/Sows	1,147,830	1,150,729	-0.3
Feeder Pigs	2,231,541	1,736,453	28.5
Total	3,379,371	2,887,182	17.0

Week Ending 02-08-03

Barrows/Gilts/Sows	35,268	38,819	-9.1
Feeder Pigs	70,351	70,005	0.5
Total	105,619	108,824	-2.9



Source: USDA-APHIS

IMPORTS

YTD for the week ending August 3

(Metric Tonnes) preliminary	2002	2001	% chg
FRESH & FROZEN PORK			
United States	41,915	33,998	23.3
Denmark	107	527	-79.7
Other	1	113	-99.1

PROCESSED & OTHER PORK

	2002	2001	% chg
United States	5,957	6,591	-9.6
Denmark	-	2	-
Other	142	217	-34.6
TOTAL IMPORTS	48,122	41,448	16.1

Frozen Pork from the European Union:

The TRQ level has established for frozen meat of pork originating from EU countries, for the twelve month period August 1 to July 31. Imports in excess of 2,970,000 kg in the twelve month period are subject to a surtax in an amount equal to the value for the duty (100%) determined in accordance with the Customs Act.

	Permits issued as of August 12, 2002		
	2002/03	2001/02	% chg
Utilization (kg)	533,947		
Balance (kg)	2,436,053		-
% Utilization	18.0%		-

Prepared by: Red Meat Section, Agriculture and Agri-Food Canada

Contact: Patti Negrave (613) 759-6216 or see us at: <http://www.agr.ca/redmeat>