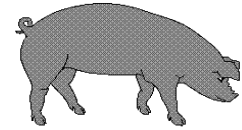




Hog Statistics at a Glance CANADA



For the Week Ending December 2, 2006

Federal Slaughter	CUMULATIVE TOTALS TO DATE			
	weekly kill # head	2006 '000 head	2005 '000 head	% chg
West	161,057	7,902.0	7,981.0	-1.0
Ontario	84,055	3,743.0	3,851.0	-2.8
Quebec	158,449	7,219.0	7,493.0	-3.7
Atlantic	7,992	372.0	394.0	-5.6
CANADA	411,553	19,236.0	19,719.0	-2.4
Pork Production (t)	36,011	1,683,150	1,719,497	-2.1
Estimated Sow Slaughter	2,449	131,481	111,624	17.8

Weekly Prices \$/kg (index 100)	2006	2005	% chg
	Ontario*	124.41	124.86
Quebec	124.00	133.26	-6.9
Alberta	119.80	119.30	0.4
Manitoba*	132.00	128.00	3.1
British Columbia	138.90	136.40	1.8
Saskatchewan	124.00	119.50	3.8
Nova Scotia	127.12	133.46	-4.8
Prince Ed. Is.	124.41	122.56	1.5
New Brunswick	122.62	128.96	-4.9

*estimate

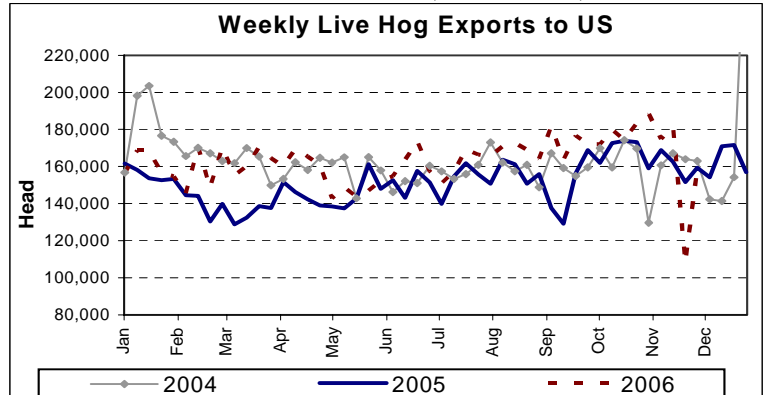
PORK EXPORTS YTD for the period of January - September

(Metric Tonnes)	2006	2005	% chg
FRESH, FROZEN AND PROCESSED PORK			
United States	267,930	281,722	(4.9)
Japan	165,902	211,030	(21.4)
Australia	26,834	27,110	(1.0)
Russia	69,327	22,048	214.4
Mexico	40,270	47,054	(14.4)
South Korea	54,396	45,671	19.1
China	31,974	35,049	(8.8)
Taiwan	9,419	15,290	(38.4)
Cuba	5,603	4,344	29.0
New Zealand	6,198	5,064	22.4
Other	98,461	73,908	33.2
Total	776,314	768,290	1.0

Source: STATISTICS CANADA

LIVE HOG EXPORTS TO U.S.

	YTD 06	YTD 05	% chg
HOGS (head)			
Barrows/Gilts/Sows	2,466,644	2,507,605	-1.6
Feeder Pigs	5,366,924	4,749,974	13.0
Total	7,833,568	7,257,579	7.9
Week Ending 06-12-02			
Barrows/Gilts/Sows	53,101	54,037	-1.7
Feeder Pigs	106,545	105,355	1.1
Total	159,646	159,392	0.2



Source: USDA-APHIS

IMPORTS YTD for the week ending 06-11-25

(Metric Tonnes) preliminary	2006	2005	% chg
FRESH & FROZEN PORK			
United States	80,849	77,987	3.7
Denmark (REVISIONS)	162	386	-58.0
Other	4	30	-86.7

	2006	2005	% chg
PROCESSED & OTHER PORK			
United States	16,780	15,459	8.5
Denmark	13	-	-
Other	1,949	246	692.3
TOTAL IMPORTS	99,757	94,108	6.0

Frozen Pork from the European Union:

The TRQ level has established for frozen meat of pork originating from EU countries, for the twelve month period August 1 to July 31, 2007. Imports in excess of 2,970,000 kg in the twelve month period are subject to a surtax in an amount equal to the value for the duty (100%) determined in accordance with the Customs Act.

	Permits issued as of December 2, 2006		
	2006/2007	2005/2006	% chg
Utilization (kg)	2,970,000	2,970,000	0.0
Balance (kg)	-	-	-
% Utilization	100.0%	100.0%	0.0

Prepared by: Red Meat Section, Agriculture and Agri-Food Canada

Contact: Patti Negrave (613) 759-6216 or see us at: <http://www.agr.ca/redmeat>



Hog Statistics at a Glance CANADA

Canadian Hog Slaughter by Province of Origin

Total Slaughter Year to Date December 2, 2006

Week ending December 2, 2006

	2006	2005	% chg	2006	2005	% chg
British Columbia	195,766	210,786	-7.1	3,796	2,362	60.7
Alberta	3,465,522	3,288,066	5.4	66,444	80,688	-17.7
Saskatchewan	1,029,868	1,136,303	-9.4	25,374	22,200	14.3
Manitoba	3,576,056	3,727,825	-4.1	72,050	80,463	-10.5
Ontario	4,734,967	4,928,120	-3.9	103,558	109,767	-5.7
Quebec	6,624,999	6,799,185	-2.6	147,705	144,951	1.9
New Brunswick	123,100	138,300	-11.0	2,476	2,822	-12.3
Nova Scotia	162,742	171,379	-5.0	3,170	3,355	-5.5
Prince Edward Island	183,553	187,359	-2.0	4,251	3,577	18.8
CANADA	20,096,573	20,587,323	-2.4	428,824	450,185	-4.7

UNITED STATES

Year To Date for the Week Ending December 2, 2006

Supply Summary

	2006	2005	% chg
Slaughter ('000 head)	95,238	94,365	0.9
Slaughter for the week	2,156	2,169	-0.6
Avg Dressed Wt (lbs)	203	204	-0.5
Pork Produced (mil lbs)	19,145	18,856	1.5

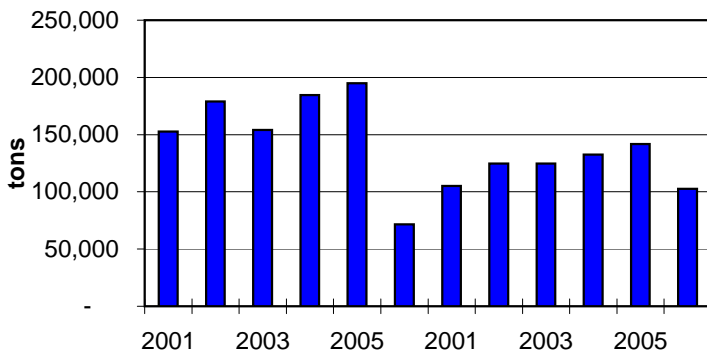
Source: USDA-APHIS

Weekly US Prices (\$/cwt)

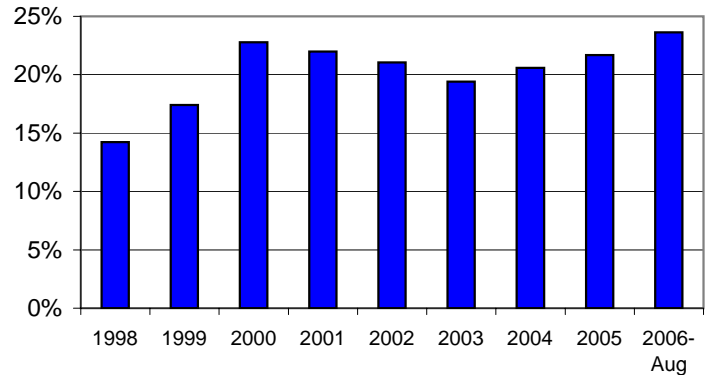
	2006	2005	% chg
South St. Joseph	41.25	40.50	1.9
Sioux Falls	43.50	43.88	-0.9
Oklahoma City	38.00	35.67	6.5
National Cost	60.62	58.15	4.2

(51-54% Lean Yield Basis)

Canadian Pork Exports to Japan
January - August



Canadian Market Share of Japan's
Fresh/Chilled Pork Imports



Prepared by: Red Meat Section, Agriculture and Agri-Food Canada

Contact: Patti Negrave (613) 759-6216 or see us at: <http://www.agr.ca/redmeat>