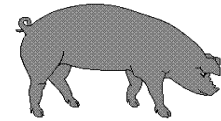




# Hog Statistics at a Glance CANADA



For the Week Ending February 12, 2005

Federal Slaughter	weekly kill # head	CUMULATIVE TOTALS TO DATE		
		2005	2004	% chg
		'000 head		
West	175,369	1,044.0	992.0	5.2
Ontario	82,113	514.0	494.0	4.0
Quebec	166,234	1,033.0	945.0	9.3
Atlantic (estimated)	8,927	53.0	59.0	-10.2
<b>CANADA</b>	<b>432,643</b>	<b>2,644.0</b>	<b>2,490.0</b>	<b>6.2</b>
<b>Pork Production (t)</b>	<b>37,856</b>	<b>231,350</b>	<b>217,128</b>	<b>6.6</b>
<b>Estimated Sow Slaughter</b>	<b>2,391</b>	<b>14,720</b>	<b>14,951</b>	<b>-1.5</b>

Weekly Prices \$/kg (index 100)	2005			2004			% chg
	2005	2004	% chg	2005	2004	% chg	
Ontario	163.30	141.46	15.4				
Quebec	173.33	152.52	13.6				
Alberta	148.20	136.30	8.7				
Manitoba*	161.00	142.66	12.9				
British Columbia	177.60	149.50	18.8				
Saskatchewan	135.20	132.00	2.4				
Nova Scotia	170.63	136.32	25.2				
Prince Ed. Is.	159.63	139.97	14.0				
New Brunswick	166.13	131.82	26.0				

\*estimate

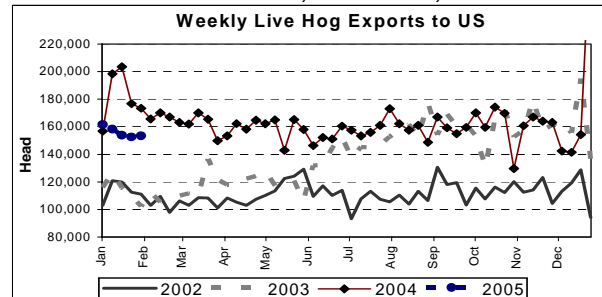
## PORK EXPORTS YTD for the period of January to December

(Metric Tonnes)	2004	2003	% chg
<b>FRESH, FROZEN AND PROCESSED PORK</b>			
United States	409,386	450,921	(9.2)
Japan	203,851	191,896	6.2
Australia	35,179	36,058	(2.4)
Russia	21,211	24,718	(14.2)
Mexico	68,431	55,847	22.5
South Korea	32,995	29,943	10.2
China	36,826	25,897	42.2
Taiwan	23,373	21,396	9.2
Cuba	6,984	7,319	(4.6)
New Zealand	7,154	74,334	(90.4)
Other	82,992	6,015	1,279.8
<b>Total</b>	<b>928,382</b>	<b>924,344</b>	<b>0.4</b>

Source: STATISTICS CANADA

## LIVE HOG EXPORTS TO U.S.

	YTD 05	YTD 04	% chg
<b>HOGS (head)</b>			
Barrows/Gilts/Sows	271,063	340,233	-20.3
Feeder Pigs	508,373	568,207	-10.5
<b>Total</b>	<b>779,436</b>	<b>908,440</b>	<b>-14.2</b>
<b>Week Ending 05-02-05</b>			
Barrows/Gilts/Sows	48,259	57,705	-16.4
Feeder Pigs	105,145	115,636	-9.1
<b>Total</b>	<b>153,404</b>	<b>173,341</b>	<b>-11.5</b>



Source: USDA-APHIS

## IMPORTS YTD for the week ending 05-02-05

(Metric Tonnes) preliminary	2005	2004	% chg
<b>FRESH &amp; FROZEN PORK</b>			
United States	6,887	7,448	-7.5
Denmark	123	73	68.5
Other	-	-	

PROCESSED & OTHER PORK	2005	2004	% chg
United States	1,208	1,143	5.7
Denmark	-	-	
Other	10	3	233.3
<b>TOTAL IMPORTS</b>	<b>8,228</b>	<b>8,667</b>	<b>-5.1</b>

## Frozen Pork from the European Union:

The TRQ level has established for frozen meat of pork originating from EU countries, for the twelve month period August 1 to July 31, 2005. Imports in excess of 2,970,000 kg in the twelve month period are subject to a surtax in an amount equal to the value for the duty (100%) determined in accordance with the Customs Act.

	Permits issued as of February 12, 2005		
	2004/2005	2003/2004	% chg
Utilization (kg)	1,917,961	2,970,000	-35.4
Balance (kg)	1,052,039	-	
% Utilization	64.6%	100.0%	(35.4)

Prepared by: Red Meat Section, Agriculture and Agri-Food Canada

Contact: Patti Negrave (613) 759-6216 or see us at: <http://www.agr.ca/redmeat>



Agriculture and  
Agri-Food Canada

Agriculture et  
Agroalimentaire Canada

## Hog Statistics at a Glance CANADA

### Canadian Hog Slaughter by Province of Origin

	Total Slaughter Year to Date February 12, 2005			Week ending February 12, 2005		
	2005	2004	% chg	2005	2004	% chg
British Columbia	27,760	29,845	-7.0	4,590	4,834	-5.0
Alberta	417,056	403,573	3.3	69,641	67,989	2.4
Saskatchewan	164,154	155,871	5.3	26,955	26,554	1.5
Manitoba	491,204	455,756	7.8	83,427	77,896	7.1
Ontario	657,023	598,136	9.8	105,424	99,678	5.8
Quebec	958,368	899,169	6.6	153,577	150,592	2.0
New Brunswick	17,804	17,894	-0.5	2,567	3,457	-25.7
Nova Scotia	22,102	23,717	-6.8	3,227	3,852	-16.2
Prince Edward Island	24,964	27,821	-10.3	4,845	4,304	12.6
<b>CANADA</b>	<b>2,780,435</b>	<b>2,611,782</b>	<b>6.5</b>	<b>454,253</b>	<b>439,156</b>	<b>3.4</b>

## UNITED STATES

### Year To Date for the Week Ending February 12, 2005

Supply Summary				Weekly US Prices (\$/cwt)			
	2005	2004	% chg		2005	2004	% chg
Slaughter ('000 head)	12,009	12,606	-4.7	South St. Joseph	45.25	40.50	11.7
Slaughter for the week	2,030	1,973	2.9	Sioux Falls	46.90	42.38	10.7
Avg Dressed Wt (lbs)	202	200	1.0	Oklahoma City	45.00	38.00	18.4
Pork Produced (mil lbs)	2,409	2,525	-4.6	National Cost	65.71	57.89	13.5
Source: USDA-APHIS				(51-54% Lean Yield Basis)			

### Canadian Hog Inventories ('000 head) at January 1

	2005	2004	% chg		2005	2004	% chg
Breeding Stock	1,646.6	1,617.3	1.8	Canada	<b>14,675</b>	<b>14,623</b>	<b>0.4</b>
Sows & Bred Gilts	1,610.7	1,578.1	2.1	Atlantic	356	366	-2.8
Boars, 6 mths plus	35.9	39.2	-8.4	Quebec	4,280	4,250	0.7
All Other Pigs	13,028.4	13,005.7	0.2	Ontario	3,610	3,670	-1.6
Under 20 kg	4,411.9	4,548.0	-3.0	Manitoba	2,870	2,852	0.6
20-60 kg	4,331.5	4,266.7	1.5	Saskatchewan	1,342	1,265	6.1
Over 60 kg	4,285.0	4,191.0	2.2	Alberta	2,045	2,050	-0.2
<b>TOTAL</b>	<b>14,675.0</b>	<b>14,623.0</b>	<b>0.4</b>	British Columbia	172	170	1.2

Source: Statistics Canada

Prepared by: Red Meat Section, Agriculture and Agri-Food Canada

Contact: Patti Negrave (613) 759-6216 or see us at: <http://www.agr.ca/redmeat>