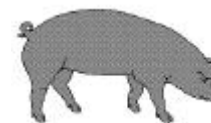




Hog Statistics at a Glance CANADA



For the Week Ending July 19, 2003

Federal Slaughter	weekly kill # head	CUMULATIVE TOTALS TO DATE		
		2003 '000 head	2002 '000 head	% chg
West	161,256	5,034.0	4,370.0	15.2
Ontario	91,638	2,700.0	2,152.0	25.5
Quebec	153,828	4,431.0	4,417.0	0.3
Atlantic	9,965	292.0	292.0	0.0
CANADA	416,687	12,457.0	11,231.0	10.9
Pork Production (t)	36,460	1,089,988	979,343	11.3
Estimated Sow Slaughter	1,876	89,287	91,538	-2.5

Weekly Prices \$/kg (index 100)	2003	2002	% chg
Ontario 102.5%	1.61	1.59	1.3
Quebec	1.48	1.46	1.4
Alberta	1.46	1.51	-3.3
Manitoba*	1.61	1.56	3.2
British Columbia	1.66	1.65	0.6
Saskatchewan	1.43	1.46	-2.1
Nova Scotia	1.61	1.63	-1.2
Prince Ed. Is.	1.58	1.58	0.0
New Brunswick	1.57	1.58	-0.6

*estimate

PORK EXPORTS YTD for the period of January 1 to May 31, 2003

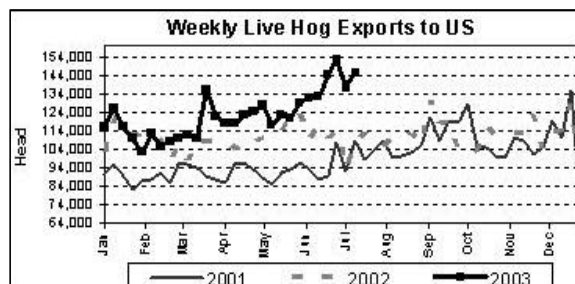
(Metric Tonnes)

FRESH, FROZEN AND PROCESSED PORK	2003	2002	% chg
United States	180,846	155,447	16.3
Japan	80,058	69,342	15.5
Australia	17,654	9,858	79.1
Russia	14,983	15,313	(2.2)
Mexico	19,041	15,872	20.0
South Korea	13,327	12,999	2.5
China	10,153	7,347	38.2
Taiwan	6,266	1,623	286.1
Cuba	3,607	4,526	(20.3)
New Zealand	3,205	2,804	14.3
Other	28,397	23,783	19.4
Total	377,537	318,914	18.4

Source: STATISTICS CANADA

LIVE HOG EXPORTS TO U.S.

	YTD 03	YTD 02	% chg
HOGS (head)			
Barrows/Gilts/Sows	952,565	1,049,427	-9.2
Feeder Pigs	2,478,886	2,003,658	23.7
Total	3,431,451	3,053,085	12.4
Week Ending 03-07-12			
Barrows/Gilts/Sows	52,607	33,332	57.8
Feeder Pigs	92,772	74,373	24.7
Total	145,379	107,705	35.0



Source: USDA-APHIS

IMPORTS YTD for the week ending July 12, 2003

(Metric Tonnes) preliminary	2003	2002	% chg
FRESH & FROZEN PORK			
United States	29,484	37,261	-20.9
Denmark	1,325	123	977.2
Other	634	-	

PROCESSED & OTHER PORK

	2003	2002	% chg
United States	5,504	5,500	0.1
Denmark	6	-	
Other	74	121	-38.8
TOTAL IMPORTS	37,027	43,005	-13.9

Frozen Pork from the European Union:

The TRQ level has established for frozen meat of pork originating from EU countries, for the twelve month period August 1 to July 31. Imports in excess of 2,970,000 kg in the twelve month period are subject to a surtax in an amount equal to the value for the duty (100%) determined in accordance with the Customs Act. In 2001/02 the Tariff Rate Quota was reached on October 2, 2002. Effective as of February 19, 2003 the Tariff Rate Quota has filled, therefore, all imports to July 31, 2003 will be subject to the EU Surtax Order.

	Permits issued as of March 24, 2003		
	2002/2003	2001/2002	% chg
Utilization (kg)	2,962,582	2,969,839	-0.2
Balance (kg)	7,418	541	
% Utilization	99.8%	100.0%	(0.2)

Prepared by: Red Meat Section, Agriculture and Agri-Food Canada

Contact: Patti Negrave (613) 759-6216 or see us at: <http://www.agr.ca/redmeat>



Hog Statistics at a Glance CANADA

Canadian Hog Slaughter by Province of Origin

Total Slaughter Year to Date July 19, 2003

Week ending July 19, 2003

	2003	2002	% chg	2003	2002	% chg
British Columbia	141,891	134,664	5.4	4,831	4,787	0.9
Alberta	1,977,766	1,820,030	8.7	70,326	65,674	7.1
Saskatchewan	753,773	790,762	-4.7	23,234	25,527	1.6
Manitoba	2,161,031	1,890,371	14.3	62,865	70,787	-11.2
Ontario	3,054,859	2,874,276	6.3	103,026	98,821	4.3
Quebec	4,033,833	3,994,484	1.0	141,248	139,518	1.2
New Brunswick	101,542	113,577	-10.6	3,518	4,458	-21.1
Nova Scotia	114,444	128,711	-11.1	3,630	4,545	-20.1
Prince Edward Island	118,178	119,697	-1.3	4,009	4,225	-5.1
CANADA	12,457,317	11,866,572	5.0	416,687	418,342	-0.4

UNITED STATES

Year To Date for the Week Ending July 19, 2003

Supply Summary

	2003	2002	% chg
Slaughter ('000 head)	52,655	52,843	-0.4
Slaughter for the week	1,828	1,789	2.2
Avg Dressed Wt (lbs)	197	194	1.5
Pork Produced (mil lbs)	10,466	10,439	0.3

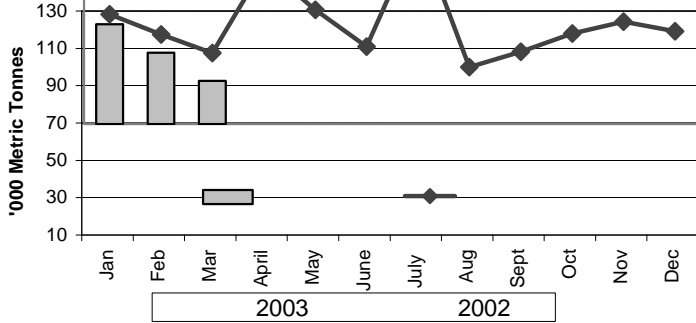
Source: USDA-APHIS

Weekly US Prices (\$/cwt)

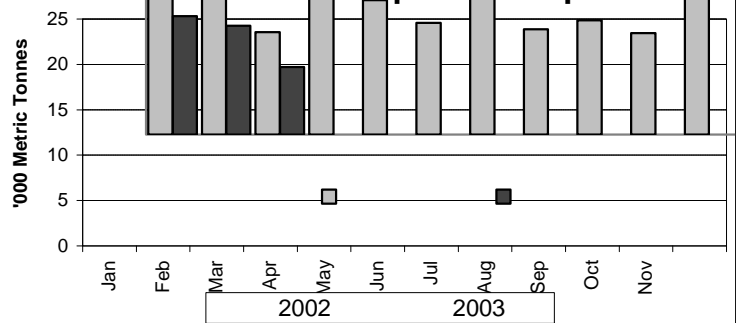
	2003	2002	% chg
South St. Joseph	40.00	37.25	7.4
Sioux Falls	41.90	40.20	4.2
Lancaster County	48.33	37.16	30.1
National Cost	61.21	54.62	12.1

(51-54% Lean Yield Basis)

Total Japanese Pork Imports



Canada Pork Exports to Japan



Source: Agriculture & Livestock Industries Corporation

Contact: Patti Negrave (613) 759-6216 or see us at: <http://www.agr.ca/redmeat>

Prepared by: Red Meat Section, Agriculture and Agri-Food Canada