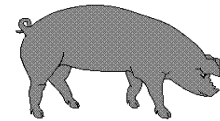




# Hog Statistics at a Glance CANADA



For the Week Ending May 8, 2004

Federal Slaughter	weekly kill # head	CUMULATIVE TOTALS TO DATE		
		2004	2003	% chg
		'000 head		
West	157,572	3,121.0	3,225.0	-3.2
Ontario	78,934	1,547.0	1,555.0	-0.5
Quebec	153,018	3,013.0	2,963.0	1.7
Atlantic	9,641	185.0	189.0	-2.1
<b>CANADA</b>	<b>399,165</b>	<b>7,866.0</b>	<b>7,932.0</b>	<b>-0.8</b>
<b>Pork Production (t)</b>	<b>34,927</b>	<b>688,275</b>	<b>691,670</b>	<b>-0.5</b>
<b>Estimated Sow Slaughter</b>	<b>2,620</b>	<b>47,727</b>	<b>60,351</b>	<b>-20.9</b>

Weekly Prices \$/kg (index 100)			
	2004	2003	% chg
Ontario 102.5%	1.90	1.46	30.1
Quebec	1.94	1.49	30.2
Alberta	1.83	1.38	32.6
Manitoba*	1.83	1.49	22.8
British Columbia	1.87	1.51	23.8
Saskatchewan	1.74	1.37	27.0
Nova Scotia	1.74	1.42	22.5
Prince Ed. Is.	1.79	1.46	22.6
New Brunswick	1.70	1.38	23.2

\*estimate

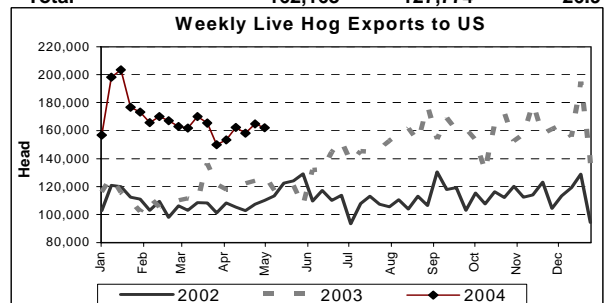
## PORK EXPORTS YTD for the period of January to March

(Metric Tonnes)	2004	2003	% chg
<b>FRESH, FROZEN AND PROCESSED PORK</b>			
United States	102,437	109,301	(6.3)
Japan	53,994	52,224	3.4
Australia	8,699	10,382	(16.2)
Russia	3,785	11,332	(66.6)
Mexico	14,277	11,825	20.7
South Korea	7,391	8,924	(17.2)
China	7,291	6,764	7.8
Taiwan	6,247	4,390	42.3
Cuba	2,536	2,008	26.3
New Zealand	1,144	1,823	(37.2)
Other	22,553	16,727	34.8
<b>Total</b>	<b>230,354</b>	<b>235,700</b>	<b>(2.3)</b>

Source: STATISTICS CANADA

## LIVE HOG EXPORTS TO U.S.

	YTD 04	YTD 03	% chg
<b>HOGS (head)</b>			
Barrows/Gilts/Sows	1,040,947	573,370	81.5
Feeder Pigs	1,981,434	1,523,453	30.1
<b>Total</b>	<b>3,022,381</b>	<b>2,096,823</b>	<b>44.1</b>
<b>Week Ending 04-05-01</b>			
Barrows/Gilts/Sows	47,116	28,684	64.3
Feeder Pigs	115,047	99,090	16.1
<b>Total</b>	<b>162,163</b>	<b>127,774</b>	<b>26.9</b>



Source: USDA-APHIS

## IMPORTS YTD for the week ending May 1, 2004

(Metric Tonnes) preliminary	2004	2003	% chg
<b>FRESH &amp; FROZEN PORK</b>			
United States	25,326	18,606	36.1
Denmark	186	1,182	-84.3
Other	1	525	-99.8

PROCESSED & OTHER PORK			
	2004	2003	% chg
United States	4,825	3,826	26.1
Denmark	-	6	-
Other	37	62	-40.3
<b>TOTAL IMPORTS</b>	<b>30,375</b>	<b>24,207</b>	<b>25.5</b>

## Frozen Pork from the European Union:

The TRQ level has established for frozen meat of pork originating from EU countries, for the twelve month period August 1 to July 31, 2004. Imports in excess of 2,970,000 kg in the twelve month period are subject to a surtax in an amount equal to the value for the duty (100%) determined in accordance with the Customs Act. Effective as of October 3, 2003 the frozen pork TRQ from the EU imported under tariff item No. 0203.29.00 of the Customs Tariff has filled and therefore all frozen pork imports from the EU, until July 31, 2004, will be subject to the European Union Surtax Order.

	Permits issued as of May 8, 2004		
	2003/2004	2002/2003	% chg
Utilization (kg)	2,969,000	2,962,582	0.2
Balance (kg)	1,002	7,418	-86.6
% Utilization	100.0%	99.8%	0.2

Prepared by: Red Meat Section, Agriculture and Agri-Food Canada

Contact: Patti Negrave (613) 759-6216 or see us at: <http://www.agr.ca/redmeat>



## Hog Statistics at a Glance CANADA

### Canadian Hog Slaughter by Province of Origin

Total Slaughter Year to Date May 8, 2004

Week ending May 8, 2004

	2004	2003	% chg	2004	2003	% chg
British Columbia	90,860	94,954	-4.3	4,556	4,780	-4.7
Alberta	1,269,684	1,310,464	-3.1	65,748	66,767	-1.5
Saskatchewan	489,522	512,717	-4.5	25,550	26,329	-3.0
Manitoba	1,433,085	1,479,314	-3.1	70,579	76,110	-7.3
Ontario	1,930,808	2,023,407	-4.6	100,785	108,496	-7.1
Quebec	2,803,283	2,711,101	3.4	140,441	135,823	3.4
New Brunswick	60,283	64,294	-6.2	3,482	3,652	-4.7
Nova Scotia	72,576	77,773	-6.7	3,768	3,931	-4.1
Prince Edward Island	84,023	79,099	6.2	4,308	4,104	5.0
<b>CANADA</b>	<b>8,234,124</b>	<b>8,353,123</b>	<b>-1.4</b>	<b>419,217</b>	<b>429,992</b>	<b>-2.5</b>

## UNITED STATES

Year To Date for the Week Ending May 8, 2004

### Supply Summary

	2004	2003	% chg
Slaughter ('000 head)	35,785	35,122	1.9
Slaughter for the week	1,840	1,912	-3.8
Avg Dressed Wt (lbs)	200	199	0.5
Pork Produced (mil lbs)	7,172	6,987	2.6

Source: USDA-APHIS

### Weekly US Prices (\$/cwt)

	2004	2003	% chg
South St. Joseph	52.75	39.25	34.4
Sioux Falls	56.65	42.40	33.6
Oklahoma City	47.50	38.00	25.0
National Cost	73.62	55.16	33.5

(51-54% Lean Yield Basis)

### Canadian Hog Inventories ('000 Head) at April 1

	2004	2003	% chg		2004	2003	% chg
Breeding Stock	1,619.8	1,586.7	2.1	<b>Canada</b>	<b>14,558</b>	<b>14,567</b>	<b>-0.1</b>
Sows & Bred Gilts	1,581.5	1,546.6	2.3	Atlantic	365	369	-1.0
Boars, 6 mths plus	38.3	40.1	-4.5	Quebec	4,220	4,280	-1.4
All Other Pigs	12,938.2	12,980.7	-0.3	Ontario	3,660	3,700	-1.1
Under 20 kg	4,538.2	4,403.9	3.0	Manitoba	2,840	2,750	3.3
20-60 kg	4,256.6	4,416.3	-3.6	Sask.	1,275	1,211	5.3
Over 60 kg	4,143.4	4,160.5	-0.4	Alberta	2,030	2,100	-3.3
<b>Total</b>	<b>14,558.0</b>	<b>14,567.4</b>	<b>-0.1</b>	B.C.	168	158	6.3