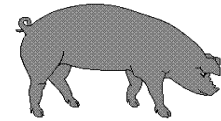




Hog Statistics at a Glance CANADA



For the Week Ending November 27, 2004

| Federal Slaughter | weekly kill # head | CUMULATIVE TOTALS TO DATE | | |
|--------------------------------|-----------------------|---------------------------|------------------|--------------|
| | | 2004 | 2003 | % chg |
| | | '000 head | | |
| West | 179,099 | 7,831.0 | 7,758.0 | 0.9 |
| Ontario | 60,554 | 3,821.0 | 3,899.0 | -2.0 |
| Quebec | 186,011 | 7,727.0 | 7,512.0 | 2.9 |
| Atlantic (estimated) | 9,311 | 445.0 | 469.0 | -5.1 |
| CANADA | 434,975 | 19,824.0 | 19,638.0 | 0.9 |
| Pork Production (t) | 38,060 | 1,734,600 | 1,712,434 | 1.3 |
| Estimated Sow Slaughter | 2,572 | 113,071 | 144,910 | -22.0 |

| Weekly Prices \$/kg (index 100) | 2004 | 2003 | % chg |
|---------------------------------|----------------|------|-------|
| | Ontario 102.5% | 1.40 | 1.19 |
| Quebec | 1.66 | 1.16 | 43.1 |
| Alberta | 1.61 | 1.11 | 45.0 |
| Manitoba* | 1.63 | 1.25 | 30.4 |
| British Columbia | 1.85 | 1.25 | 48.0 |
| Saskatchewan | 1.52 | 1.03 | 47.6 |
| Nova Scotia | 1.52 | 1.17 | 29.9 |
| Prince Ed. Is. | 1.66 | 1.12 | 48.2 |
| New Brunswick | 1.48 | 1.12 | 32.1 |

*estimate

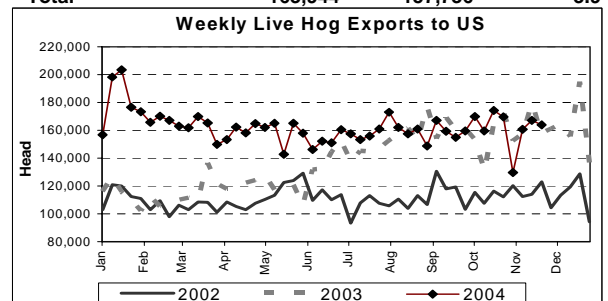
PORK EXPORTS YTD for the period of January to September

| (Metric Tonnes) | 2004 | 2003 | % chg |
|---|----------------|----------------|------------|
| FRESH, FROZEN AND PROCESSED PORK | | | |
| United States | 309,725 | 336,402 | (7.9) |
| Japan | 159,038 | 148,929 | 6.8 |
| Australia | 25,055 | 26,779 | (6.4) |
| Russia | 9,907 | 20,090 | (50.7) |
| Mexico | 52,447 | 42,051 | 24.7 |
| South Korea | 22,689 | 22,804 | (0.5) |
| China | 26,956 | 19,319 | 39.5 |
| Taiwan | 17,012 | 14,352 | 18.5 |
| Cuba | 5,439 | 5,149 | 5.6 |
| New Zealand | 5,393 | 5,540 | (2.7) |
| Other | 84,326 | 50,280 | 67.7 |
| Total | 717,987 | 691,695 | 3.8 |

Source: STATISTICS CANADA

LIVE HOG EXPORTS TO U.S.

| | YTD 04 | YTD 03 | % chg |
|-----------------------------|------------------|------------------|-------------|
| HOGS (head) | | | |
| Barrows/Gilts/Sows | 2,583,266 | 2,098,977 | 23.1 |
| Feeder Pigs | 5,045,230 | 4,341,924 | 16.2 |
| Total | 7,628,496 | 6,440,901 | 18.4 |
| Week Ending 04-11-20 | | | |
| Barrows/Gilts/Sows | 65,876 | 64,109 | 2.8 |
| Feeder Pigs | 98,068 | 93,627 | 4.7 |
| Total | 163,944 | 157,736 | 3.9 |



Source: USDA-APHIS

IMPORTS YTD for the week ending November 20, 2004

| (Metric Tonnes) preliminary | 2004 | 2003 | % chg |
|--------------------------------|--------|--------|-------|
| FRESH & FROZEN PORK | | | |
| United States | 63,207 | 55,942 | 13.0 |
| Denmark | 881 | 4,077 | -78.4 |
| Other | 53 | 1,415 | -96.3 |

PROCESSED & OTHER PORK

| | 2004 | 2003 | % chg |
|----------------------|---------------|---------------|------------|
| United States | 12,533 | 9,716 | 29.0 |
| Denmark | - | 6 | |
| Other | 163 | 142 | 14.8 |
| TOTAL IMPORTS | 76,837 | 71,298 | 7.8 |

Frozen Pork from the European Union:

The TRQ level has established for frozen meat of pork originating from EU countries, for the twelve month period August 1 to July 31, 2005. Imports in excess of 2,970,000 kg in the twelve month period are subject to a surtax in an amount equal to the value for the duty (100%) determined in accordance with the Customs Act.

| | Permits issued as of November 27, 2004 | | |
|------------------|--|-----------|--------|
| | 2004/2005 | 2003/2004 | % chg |
| Utilization (kg) | 1,071,472 | 2,970,000 | -63.9 |
| Balance (kg) | 1,898,528 | - | |
| % Utilization | 36.1% | 100.0% | (63.9) |

Prepared by: Red Meat Section, Agriculture and Agri-Food Canada

Contact: Patti Negrave (613) 759-6216 or see us at: <http://www.agr.ca/redmeat>