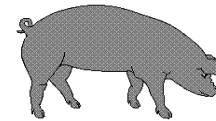




Hog Statistics at a Glance CANADA



For the Week Ending October 9, 2004

| Federal Slaughter | weekly kill # head | CUMULATIVE TOTALS TO DATE | | |
|--------------------------------|-----------------------|---------------------------|------------------|--------------|
| | | 2004 | 2003 | % chg |
| | | '000 head | | |
| West | 172,715 | 6,660.0 | 6,613.0 | 0.7 |
| Ontario | 86,850 | 3,327.0 | 3,221.0 | 3.3 |
| Quebec | 172,974 | 6,487.0 | 6,325.0 | 2.6 |
| Atlantic | 9,015 | 383.0 | 400.0 | -4.3 |
| CANADA | 441,554 | 16,857.0 | 16,559.0 | 1.8 |
| Pork Production (t) | 38,636 | 1,474,988 | 1,443,945 | 2.1 |
| Estimated Sow Slaughter | 2,193 | 97,410 | 124,489 | -21.8 |

| Weekly Prices \$/kg (index 100) | | | |
|---------------------------------|------|------|-------|
| | 2004 | 2003 | % chg |
| Ontario 102.5% | 1.83 | 1.36 | 34.6 |
| Quebec | 1.78 | 1.32 | 34.8 |
| Alberta | 1.71 | 1.26 | 35.7 |
| Manitoba* | 1.74 | 1.38 | 26.1 |
| British Columbia | 1.98 | 1.43 | 38.5 |
| Saskatchewan | 1.62 | 1.17 | 38.5 |
| Nova Scotia | 1.84 | 1.51 | 21.9 |
| Prince Ed. Is. | 1.79 | 1.37 | 30.7 |
| New Brunswick | 1.79 | 1.47 | 21.8 |

*estimate

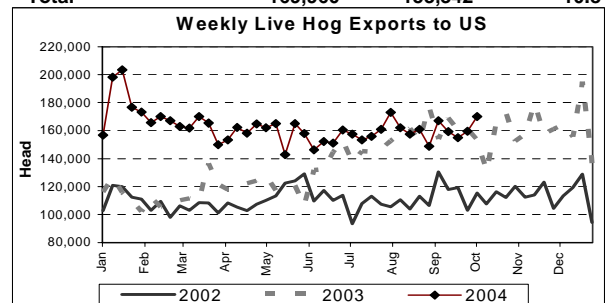
PORK EXPORTS YTD for the period of January to July

| (Metric Tonnes) | 2004 | 2003 | % chg |
|---|----------------|----------------|------------|
| FRESH, FROZEN AND PROCESSED PORK | | | |
| United States | 235,028 | 259,255 | (9.3) |
| Japan | 130,581 | 120,409 | 8.4 |
| Australia | 19,906 | 22,696 | (12.3) |
| Russia | 6,690 | 18,155 | (63.2) |
| Mexico | 39,481 | 31,099 | 27.0 |
| South Korea | 17,942 | 19,564 | (8.3) |
| China | 20,510 | 15,374 | 33.4 |
| Taiwan | 12,323 | 9,452 | 30.4 |
| Cuba | 4,648 | 4,646 | 0.0 |
| New Zealand | 3,485 | 4,089 | (14.8) |
| Other | 64,931 | 39,744 | 63.4 |
| Total | 555,525 | 544,483 | 2.0 |

Source: STATISTICS CANADA

LIVE HOG EXPORTS TO U.S.

| | YTD 04 | YTD 03 | % chg |
|-----------------------------|------------------|------------------|-------------|
| HOGS (head) | | | |
| Barrows/Gilts/Sows | 2,150,226 | 1,655,310 | 29.9 |
| Feeder Pigs | 4,353,557 | 3,667,797 | 18.7 |
| Total | 6,503,783 | 5,323,107 | 22.2 |
| Week Ending 04-10-02 | | | |
| Barrows/Gilts/Sows | 53,676 | 54,094 | -0.8 |
| Feeder Pigs | 116,284 | 99,248 | 17.2 |
| Total | 169,960 | 153,342 | 10.8 |



IMPORTS YTD for the week ending October 2, 2004

| (Metric Tonnes) preliminary | 2004 | 2003 | % chg |
|--------------------------------|--------|--------|-------|
| FRESH & FROZEN PORK | | | |
| United States | 52,373 | 44,514 | 17.7 |
| Denmark | 772 | 1,948 | -60.4 |
| Other | 28 | 942 | -97.0 |

PROCESSED & OTHER PORK

| | 2004 | 2003 | % chg |
|----------------------|---------------|---------------|-------------|
| United States | 10,798 | 8,311 | 29.9 |
| Denmark | - | 6 | |
| Other | 120 | 108 | 11.1 |
| TOTAL IMPORTS | 64,091 | 55,829 | 14.8 |

Frozen Pork from the European Union:

The TRQ level has established for frozen meat of pork originating from EU countries, for the twelve month period August 1 to July 31, 2004. Imports in excess of 2,970,000 kg in the twelve month period are subject to a surtax in an amount equal to the value for the duty (100%) determined in accordance with the Customs Act. Effective as of October 3, 2003 the frozen pork TRQ from the EU imported under tariff item No. 0203.29.00 of the Customs Tariff has filled and therefore all frozen pork imports from the EU, until July 31, 2004, will be subject to the European Union Surtax Order.

| | Permits issued as of October 4, 2004 | | |
|------------------|--------------------------------------|-----------|---------|
| | 2003/2004 | 2002/2003 | % chg |
| Utilization (kg) | 602,272 | 2,964,861 | -79.7 |
| Balance (kg) | 2,367,728 | 5,139 | 45973.7 |
| % Utilization | 20.3% | 99.8% | (79.7) |

Prepared by: Red Meat Section, Agriculture and Agri-Food Canada

Contact: Patti Negrave (613) 759-6216 or see us at: <http://www.agr.ca/redmeat>



Hog Statistics at a Glance CANADA

Canadian Hog Slaughter by Province of Origin

Total Slaughter Year to Date October 9, 2004

Week ending October 9, 2004

| | 2004 | 2003 | % chg | 2004 | 2003 | % chg |
|----------------------|-------------------|-------------------|------------|----------------|----------------|------------|
| British Columbia | 196,125 | 199,780 | -1.8 | 7,547 | 5,037 | 49.8 |
| Alberta | 2,692,800 | 2,771,211 | -2.8 | 66,255 | 68,336 | -3.0 |
| Saskatchewan | 1,043,599 | 1,060,150 | -1.6 | 26,939 | 27,913 | -3.5 |
| Manitoba | 3,069,711 | 2,952,304 | 4.0 | 81,461 | 79,492 | 2.5 |
| Ontario | 4,175,015 | 4,263,798 | -2.1 | 110,751 | 109,443 | 1.2 |
| Quebec | 5,987,675 | 5,814,505 | 3.0 | 158,251 | 155,756 | 1.6 |
| New Brunswick | 125,469 | 140,492 | -10.7 | 2,721 | 3,473 | -21.7 |
| Nova Scotia | 155,806 | 164,255 | -5.1 | 3,570 | 3,891 | -8.2 |
| Prince Edward Island | 177,414 | 169,270 | 4.8 | 4,376 | 4,942 | -11.5 |
| CANADA | 17,623,614 | 17,535,765 | 0.5 | 461,871 | 458,283 | 0.8 |

UNITED STATES

Year To Date for the Week Ending October 9, 2004

Supply Summary

| | 2004 | 2003 | % chg |
|-------------------------|--------|--------|-------|
| Slaughter ('000 head) | 77,775 | 75,616 | 2.9 |
| Slaughter for the week | 2,005 | 2,073 | -3.3 |
| Avg Dressed Wt (lbs) | 266 | 198 | 34.3 |
| Pork Produced (mil lbs) | 15,429 | 14,920 | 3.4 |

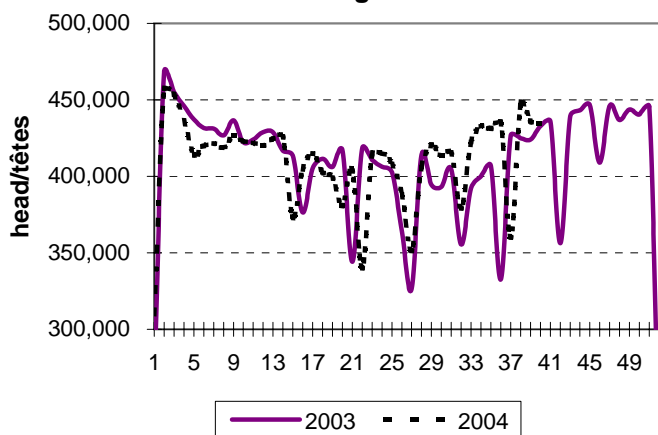
Source: USDA-APHIS

Weekly US Prices (\$/cwt)

| | 2004 | 2003 | % chg |
|------------------|-------|-------|-------|
| South St. Joseph | 53.75 | 36.50 | 47.3 |
| Sioux Falls | 52.88 | 38.05 | 39.0 |
| Oklahoma City | 50.67 | 33.83 | 49.8 |
| National Cost | 74.58 | 54.15 | 37.7 |

(51-54% Lean Yield Basis)

Canadian Federally Inspected Hog Slaughter



U.S. Federally Inspected Hog Slaughter

