

## A View of the Veal Industry - Coup d'oeil sur le secteur du veau CANADA

### Quebec Live Auction \$/100 lb / Encan vivant du Québec \$/100 lb

Week / semaine: 2006/10/28

Dairy calves / Veaux laitiers

|   | This year / Cette année |                      |               |        | Last year / L'année précédente |                      |               |        | Volume<br>(To date / à ce jour) |        |       |  |
|---|-------------------------|----------------------|---------------|--------|--------------------------------|----------------------|---------------|--------|---------------------------------|--------|-------|--|
|   | Volume                  | Average /<br>Moyenne | Range / Marge |        | Volume                         | Average /<br>Moyenne | Range / Marge |        | 2006                            | 2005   | % chg |  |
| <b>Male - Mâle</b>  |                         |                      |               |        |                                |                      |               |        |                                 |        |       |  |
| Good / Bon 90 - 120   | 916                     | 227.00               | 185.00        | 275.00 | 965                            | 205.00               | 175.00        | 250.00 | 43,083                          | 40,466 | 6.5   |  |
| Good / Bon 121 - 140  | 190                     | 208.00               | 170.00        | 262.00 | 184                            | 196.00               | 165.00        | 242.00 | 9,172                           | 9,343  | -1.8  |  |
| Average / Moyen 90 - 140 lb   | 634                     | 172.00               | 120.00        | 226.00 | 686                            | 156.00               | 115.00        | 195.00 | 28,845                          | 34,146 | -15.5 |  |
| Miscellaneous - All weights /<br>Divers - Tous poids  | 764                     | 60.00                | 10.00         | 120.00 | 795                            | 56.00                | 10.00         | 120.00 | 22,788                          | 20,181 | 12.9  |  |
| <b>Female - Femelle</b>   |                         |                      |               |        |                                |                      |               |        |                                 |        |       |  |
| Good / Bonne 90 - 120 lb  | 103                     | 125.00               | 70.00         | 200.00 | 58                             | 143.00               | 115.00        | 220.00 | 6,332                           | 4,216  | 50.2  |  |
| <b>A2 Grain fed veal calves / Veaux de grain A2</b>   |                         |                      |               |        |                                |                      |               |        |                                 |        |       |  |
| (\$/100 lb Hide off / sans peau) 596 lb live (325-353 lb hide off) / 596 lb vivant (325-353 lb sans peau) | 1355                    | 194.50               | 175.50        | 198.00 | 1613                           | 180.70               | 175.00        | 187.00 | 59,376                          | 64,756 | -8.3  |  |

### Ontario Live Auction \$/100 lb/ Encan vivant de l'Ontario \$/100 lb

Week / semaine: 2006/10/28

|               | This year / Cette année |                      |               |        | Last year / L'année précédente |                      |               |        | Volume<br>(To date / à ce jour) |        |       |
|---------------|-------------------------|----------------------|---------------|--------|--------------------------------|----------------------|---------------|--------|---------------------------------|--------|-------|
|               | Volume                  | Average /<br>Moyenne | Range / Marge |        | Volume                         | Average /<br>Moyenne | Range / Marge |        | 2006                            | 2005   | % chg |
| + 600 lbs     | 611                     | 103.75               | 86.96         | 119.04 | 582                            | 96.60                | 79.28         | 108.32 | 29,140                          | 25,129 | 16.0  |
| 451 - 600 lbs | 81                      | 86.63                | 67.32         | 105.23 | 95                             | 83.40                | 63.52         | 98.81  | 2,879                           | 3,765  | -23.5 |
| 301 - 450 lbs | 38                      | 112.00               | 76.61         | 138.08 | 78                             | 87.05                | 65.68         | 116.19 | 1,545                           | 1,893  | -18.4 |
| 126 - 300 lbs | 154                     | 133.25               | 79.49         | 184.86 | 165                            | 108.52               | 64.24         | 143.48 | 6,688                           | 6,725  | -0.6  |
| - 125 lbs     | 845                     | 164.66               | 77.64         | 223.44 | 626                            | 123.88               | 45.00         | 184.27 | 35,826                          | 35,307 | 1.5   |

Week / semaine: 2006/10/28

### Federally Inspected / Inspection fédérale

Slaughter / Abattage

|                          | (week / semaine) |              |              | (To date / à ce jour) |                |             | Carcass Weight /<br>Poids de carcasse<br>(January-April/janvier-avril) |              |             |
|--------------------------|------------------|--------------|--------------|-----------------------|----------------|-------------|--|--------------|-------------|
|                          | 2006             | 2005         | % chg        | 2006                  | 2005           | % chg       | 2006   | 2005         | % chg       |
| Western Prov. de l'Ouest | 70               | 103          | -32.0        | 3,462                 | 4,112          | -15.8       | 339.4  | 332.4        | 2.1         |
| Ontario                  | 114              | 81           | 40.7         | 8,362                 | 10,446         | -20.0       | 354.9  | 341.2        | 4.0         |
| Québec                   | 4,359            | 5,071        | -14.0        | 189,469               | 206,966        | -8.5        | 289.0  | 290.3        | -0.4        |
| <b>Canada</b>            | <b>4,543</b>     | <b>5,255</b> | <b>-13.5</b> | <b>201,293</b>        | <b>221,524</b> | <b>-9.1</b> | <b>292.4</b>   | <b>295.4</b> | <b>-1.0</b> |

Meat Exports / Exportations de viande

(To date / à ce jour): 2006/08

|                            | (To date / à ce jour) |       |       |
|----------------------------|-----------------------|-------|-------|
| (Tonnes)                   | 2006                  | 2005  | % chg |
| United States / Etats-Unis | 5,417                 | 6,772 | -20.0 |
| Japan / Japon              | -                     | -     |       |
| Mexico / Mexique           | -                     | -     |       |
| Korea / Corée              | -                     | -     |       |
| Other / Autre              | -                     | 13    |       |

Source: Statistics Canada

Meat Imports / Importations de viande

Week/Semaine: October 21/le 21 octobre 2006

|                                | (To date / à ce jour) |              |             |
|--------------------------------|-----------------------|--------------|-------------|
| (Tonnes)                       | 2006                  | 2005         | % chg       |
| United States / Etats-Unis     | 518                   | 566          | -8.5        |
| Australia / Australie          | 1,994                 | 919          | 117.0       |
| New Zealand / Nouvelle Zélande | 191                   | 272          | -29.8       |
| Other                          | -                     | -            |             |
| <b>Total</b>                   | <b>2,703</b>          | <b>1,757</b> | <b>53.8</b> |

## UNITED STATES / ETATS-UNIS

Week / semaine: 2006/10/28

### Number Slaughter / Nombre d'abattage

|   | (week / semaine) |               |             | (To date / à ce jour) |                |             |
|---|------------------|---------------|-------------|-----------------------|----------------|-------------|
|   | 2006             | 2005          | % chg       | 2006                  | 2005           | % chg       |
| <b>Special-fed (Nature, Milk-fed) /<br/>Nourris au lait ou nature</b> |                  |               |             |                       |                |             |
| North East / Nord Est   | 5,616            | 4,571         | 22.9        | 214,060               | 192,404        | 11.3        |
| North Central / Nord Central  | 4,273            | 4,105         | 4.1         | 166,916               | 223,072        | -25.2       |
| <b>Total</b>  | <b>9,889</b>     | <b>8,676</b>  | <b>14.0</b> | <b>380,976</b>        | <b>415,476</b> | <b>-8.3</b> |
| Other Calf / Autre veau   | 4,111            | 4,085         | 0.6         | 176,788               | 185,768        | -4.8        |
| <b>Total</b>  | <b>14,000</b>    | <b>12,761</b> | <b>9.7</b>  | <b>557,764</b>        | <b>601,244</b> | <b>-7.2</b> |

Production (000 lb)

|                                |     |     |      |       |       |      |
|--------------------------------|-----|-----|------|-------|-------|------|
| Calves & Veal / Veau           | 3.1 | 2.8 | 10.7 | 123.9 | 126.4 | -2.0 |
| Liveweight / Poids sur pied    | 366 | 366 | 0.0  |       |       |      |
| Dressed Weight / Poids habillé | 224 | 224 | 0.0  |       |       |      |

U.S. Wholesale Price / Prix de gros Américain

| \$/cwt / \$ par 100 livres                                 | Simple avg/<br>Moy. simple |          |          |
|--|----------------------------|----------|----------|
|  | Range / Marge              |          |          |
| 307 Rack, Ribeye, Boneless /<br>Carré, Faux filet, Désossé | 1,912.50                   | 1,825.00 | 2,000.00 |
| 332 Loin, Trimmed 4 x 4 /<br>Longe parée 4 X 4             | 575.00                     | 525.00   | 625.00   |
| 1336 Leg Slice, Retail / Cuisseau tranché                  | 787.50                     | 750.00   | 825.00   |
| 1312 Osso Buco, Fore Shank / Jarret avant                  | 762.50                     | 725.00   | 800.00   |
| Shoulder Clod, chuck / Pointe d'épaule                     | 417.50                     | 375.00   | 460.00   |

Replacement Holstein Bull calves / Bouvillons de remplacement Holstein

| Madison, Wisconsin | Range / Marge |        |
|--------------------|---------------|--------|
| 90 -100 lbs        | 155.00        | 205.00 |
| 100 -120 lbs       | 150.00        | 205.00 |
| 120 -140 lbs       | 140.00        | 190.00 |

Veal carcass, Special Fed (Hide off, 215- 275 lbs) /

| Carcasse de veau, nourris spécial (sans peau, 215-275 lb) | Average/Moyenne |        | Range / Marge |        |
|---|-----------------|--------|---------------|--------|
|   | 288.70          | 285.00 | 285.00        | 290.00 |

Source: Fédération des producteurs de bovins du Québec, Ontario Cattlemen's Association, USDA

Prepared by: Red Meat Section, Agriculture and Agri-Food Canada

Contact: Ray Thibert (613) 759-6209 thibertr@agr.gc.ca

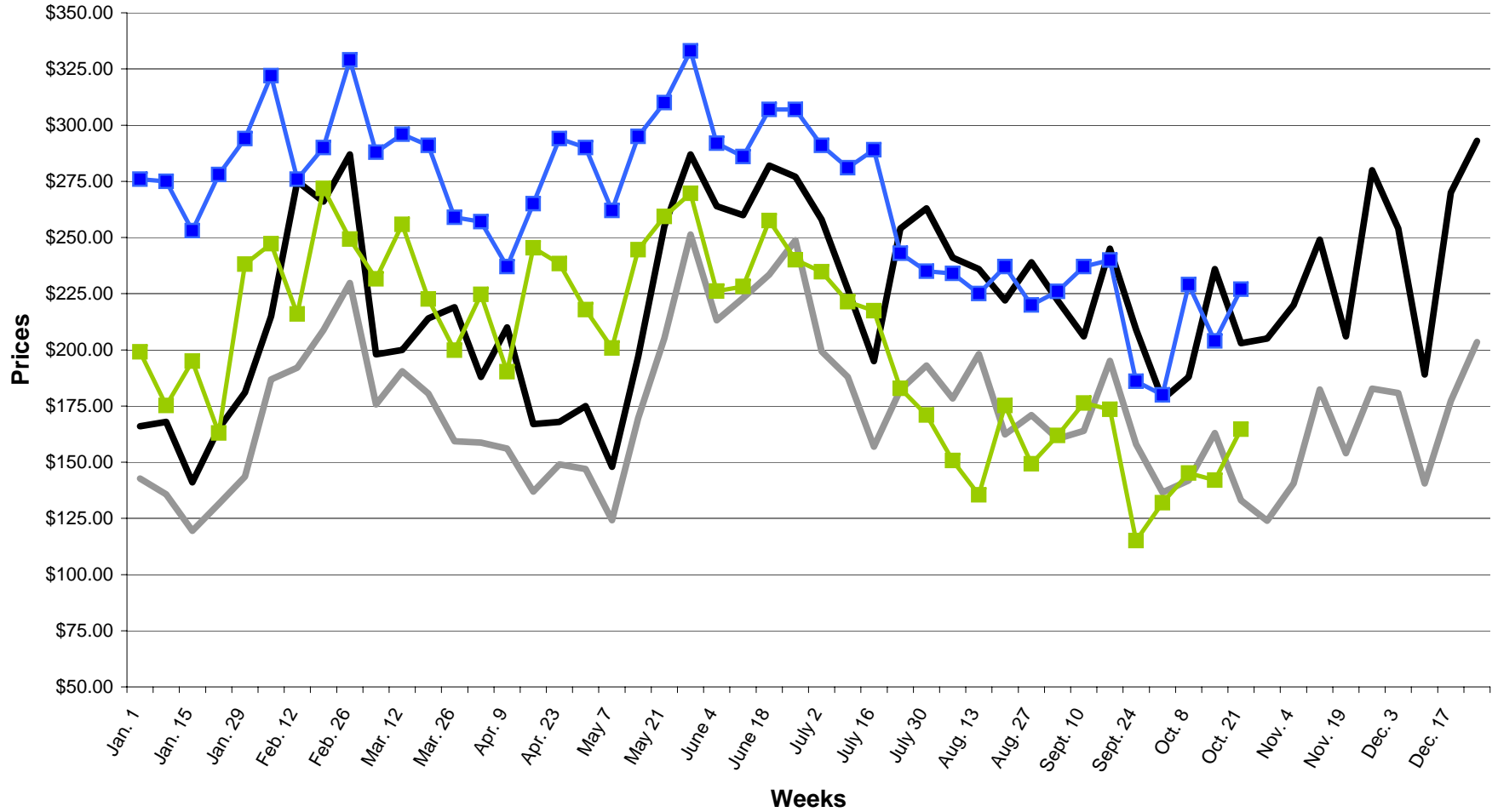
Website: www.agr.gc.ca/redmeat

Préparé par: Section de la viande rouge, Agriculture et Agroalimentaire Canada

Contact: Ray Thibert (613) 759-6209 thibertr@agr.gc.ca

Site internet: www.agr.gc.ca/redmeat

**2005-2006 SLAUGHTER CALF PRICES**  
 (Ontario 125 lbs and less, Québec male - good 100 to 120 lbs)



— ONTARIO 2005    — QUEBEC 2005    ■ ONTARIO 2006    ■ QUEBEC 2006