

## Additional Information

### VIDEOS

Will the Well Go Dry Tomorrow? (Mow-Tech Ltd.: 1-800 GEO WELL)  
Water Wells that Last (PFRA – Edmonton Office: 780-495-3307)  
Ground Water and the Rural Community (Ontario Ground Water Association)

### BOOKLET

Water Wells that Last (PFRA – Edmonton Office: 780-495-3307)

### ALBERTA ENVIRONMENT

#### WATER WELL INSPECTORS

Jennifer McPherson (Edmonton: 780-427-6429)

#### GEOPHYSICAL INSPECTION SERVICE

Edmonton: 780-427-3932

#### COMPLAINT INVESTIGATIONS

Blair Stone (Red Deer: 403-340-5310)

### UNIVERSITY OF ALBERTA – Department of Earth and Atmospheric Sciences - Hydrogeology

Carl Mendoza (Edmonton: 780-492-2664)

### UNIVERSITY OF CALGARY – Department of Geology and Geophysics - Hydrogeology

Larry Bentley (Calgary: 403-220-4512)

### FARMERS ADVOCATE

Paul Vasseur (Edmonton: 780-427-2433)

### PRAIRIE FARM REHABILITATION ADMINISTRATION

Tony Cowen (Edmonton: 780-495-4911)

Curtis Snell (Vegreville: 780-349-3963)

### LOCAL HEALTH DEPARTMENTS

**STURGEON COUNTY**

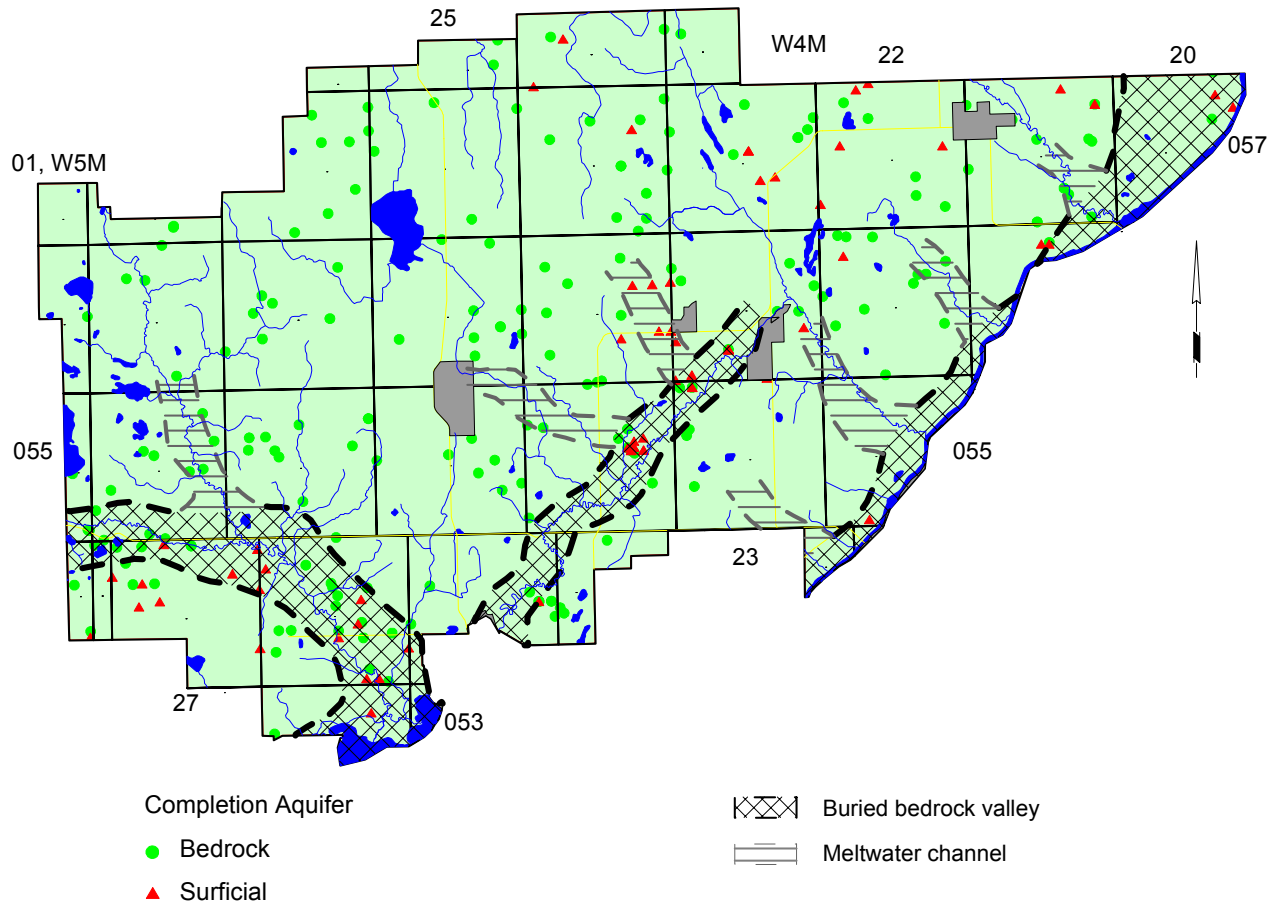
**Appendix E**

**Water Wells Recommended for Field Verification**

**and**

**County-Operated Water Wells**

**Water Wells Recommended for Field Verification**  
*(details on following pages)*



**WATER WELLS RECOMMENDED FOR FIELD VERIFICATION**

Owner	Location	Aquifer Name	Date Water Well Drilled	Completed Metres	Depth Feet	NPWL Metres	NPWL Feet	UID
Abell, Eric	NW 13-056-23 W4M	Oldman	10-Sep-85	45.7	150.0	12.2	40.0	M35377.057043
Alberta Environment	05-13-056-25 W4M	Lower Horseshoe Canyon	28-Jul-76	48.8	160.0	7.1	23.3	M35377.077229
Alberta Environment	12-07-056-23 W4M	Upper Surficial	04-Mar-75	53.6	176.0	25.1	82.4	M35377.059627
Alberta Wheat Pool	04-34-055-25 W4M	Lower Horseshoe Canyon	24-Sep-80	54.9	180.0	11.3	37.0	M35377.056606
Allen Farms	SE 14-056-22 W4M	Oldman	01-Nov-78	21.9	72.0	4.9	16.0	M35377.055665
Allison, Gordon	NE 25-057-23 W4M	Oldman	21-Jul-82	42.7	140.0	5.5	18.0	M35377.059644
Antoniuk, Robert	SW 30-056-23 W4M	Bearpaw	27-Mar-74	41.2	135.0	10.7	35.0	M35377.059315
Baanstick, S.	12-02-056-27 W4M	Lower Horseshoe Canyon	01-Oct-61	50.3	165.0	12.2	40.0	M35377.056535
Ballachay, Alrin	SE 18-054-26 W4M	Lower Horseshoe Canyon	23-Feb-76	50.3	165.0	18.3	60.0	M35377.050209
Bamford, B.	NE 33-055-24 W4M	Bearpaw	02-May-78	35.1	115.0	16.8	55.0	M35377.054608
Belanger, Ray	SE 36-057-26 W4M	Lower Horseshoe Canyon	06-Sep-86	33.5	110.0	7.0	23.0	M35377.058597
Bennett, Ken	NW 24-057-23 W4M	Oldman	19-Oct-78	67.1	220.0	18.3	60.0	M35377.067292
Berglund, Mel	NW 24-055-26 W4M	Lower Horseshoe Canyon	10-May-77	26.5	87.0	6.1	20.0	M35377.055194
Bergstreiser, Lloyd	SW 05-055-27 W4M	Lower Horseshoe Canyon	11-Nov-87	37.8	124.0	7.0	23.0	M35377.054531
Bergstreiser, Norman	SH 06-055-27 W4M	Lower Horseshoe Canyon	24-May-74	33.2	109.0	6.1	20.0	M35377.054546
Berndt, Hans	NW 24-057-26 W4M	Lower Horseshoe Canyon	24-Jun-85	36.6	120.0	4.0	13.0	M35377.058382
Bilecki, Peter	SE 02-057-24 W4M	Bearpaw	15-Nov-75	32.0	105.0	9.5	31.0	M35377.057885
Blouin, Harvey O.	SW 22-054-26 W4M	Lower Horseshoe Canyon	09-Oct-81	61.0	200.0	18.3	60.0	M35377.055034
Bodoano, D. B.	NW 33-056-22 W4M	Oldman	17-Jul-75	45.7	150.0	4.6	15.0	M35377.056296
Bokenfohr, Herman	11-02-054-26 W4M	Lower Horseshoe Canyon	19-Apr-85	43.6	143.0	6.7	22.0	M35377.049410
Bokenfohr, Herman	NW 11-054-26 W4M	Lower Horseshoe Canyon	04-Sep-85	43.6	143.0	18.3	60.0	M35377.049873
Bolle, C.	SE 25-057-26 W4M	Lower Horseshoe Canyon	12-Mar-77	22.9	75.0	12.2	40.0	M35377.058392
Borle, George	NW 30-054-26 W4M	Lower Surficial	12-Nov-82	19.8	65.0	12.1	39.7	M35377.055296
Bosch, Bill	NE 31-055-23 W4M	Lower Surficial	24-Aug-79	53.6	176.0	42.7	140.0	M35377.054933
Boulter, Ken	04-07-057-22 W4M	Upper Surficial	20-Jan-81	7.3	24.0	3.5	11.5	M35377.057619
Bova, Bernard	NW 24-057-23 W4M	Oldman	04-Mar-83	48.2	158.0	6.1	20.0	M35377.059536
Boyd, Glenn	NE 30-056-24 W4M	Lower Horseshoe Canyon	27-May-74	39.6	130.0	12.2	40.0	M35377.057332
Brenneis, Alex	SW 20-056-26 W4M	Lower Horseshoe Canyon	01-Dec-71	32.0	105.0	4.9	16.0	M35377.057154
Brochu, Dave	NE 24-055-27 W4M	Lower Horseshoe Canyon	17-May-78	42.4	139.0	16.8	55.0	M35377.055116
Brown, Al	SE 03-055-27 W4M	Lower Horseshoe Canyon	23-Jul-79	33.5	110.0	5.5	18.0	M35377.054482
Bushard	NW 13-055-27 W4M	Lower Horseshoe Canyon	02-Dec-71	42.7	140.0	2.4	8.0	M35377.054776
Byer, J.	NW 02-057-27 W4M	Lower Horseshoe Canyon	10-Apr-69	36.6	120.0	22.9	75.0	M35377.058644
Calahoo Fire Hall	NW 32-054-27 W4M	Lower Horseshoe Canyon	18-Oct-85	36.6	120.0	6.7	22.0	M35377.054047
Camarta, Ronald	NE 20-055-26 W4M	Lower Horseshoe Canyon	06-Jun-81	67.1	220.0	9.8	32.0	M35377.054979
Cantin, A.	09-13-054-25 W4M	Bearpaw	10-Sep-81	73.2	240.0	37.2	122.0	M35377.232053
Carruthers, D.	04-26-055-24 W4M	Lower Horseshoe Canyon	31-Jul-84	30.5	100.0	15.2	50.0	M35377.054365
Carruthers, Earl W.	SW 03-056-24 W4M	Bearpaw	02-May-78	33.5	110.0	16.5	54.0	M35377.063334
Case, Allan	NW 02-057-27 W4M	Lower Horseshoe Canyon	20-Oct-82	39.6	130.0	18.3	60.0	M35377.058648
Cassidy, Harold	SW 13-054-26 W4M	Bearpaw	01-May-74	93.3	306.0	21.6	71.0	M35377.049945
Chorney, S.	01-27-057-20 W4M	Birch Lake		51.8	170.0	44.2	145.0	M35377.057218
Cissell, Glen	NW 01-057-22 W4M	Oldman	04-Oct-73	45.7	150.0	13.3	43.6	M35377.057538
Clark, Brian	13-12-055-25 W4M	Bearpaw	18-Oct-82	43.3	142.0	3.1	10.0	M35377.054658
Con West Structures	08-13-054-01 W5M	Upper Horseshoe Canyon	11-Jun-84	36.3	119.0	10.7	35.0	M35379.043914
Control Land Survey	SE 23-055-24 W4M	Lower Surficial	21-Jun-78	51.8	170.0	34.4	112.8	M35377.053896

**WATER WELLS RECOMMENDED FOR FIELD VERIFICATION**

Owner	Location	Aquifer Name	Date Water Well Drilled	Completed Depth		NPWL		UID
				Metres	Feet	Metres	Feet	
Courigan, D	12-19-057-25 W4M	Lower Horseshoe Canyon	12-Jun-78	31.1	102.0	14.9	49.0	M35377.058355
Cowen, Robert	SE 23-057-21 W4M	Oldman	17-Dec-80	21.9	72.0	1.8	6.0	M35377.057627
Craig, Robert & Nadia	02-26-057-24 W4M	Upper Surficial	24-Aug-82	28.0	92.0	16.2	53.0	M35377.067509
Crawford, W. G.	09-26-057-20 W4M	Upper Surficial	22-Apr-83	6.1	20.0	4.6	15.0	M35377.057211
Cuthbert, Sterling & Ebert	SE 10-057-21 W4M	Birch Lake	22-Aug-82	54.9	180.0	11.0	36.0	M35377.057331
Cyr, G.	SE 36-057-25 W4M	Bearpaw	8-Jun-85	18.3	60.0	5.8	19.0	M35377.059384
Dalziel, J.	06-23-055-24 W4M	Lower Surficial	11-Jun-80	82.9	272.0	2.4	8.0	M35377.054124
Danake, Stan	NE 03-057-24 W4M	Bearpaw	21-Jul-77	29.3	96.0	7.0	23.0	M35377.058164
Davidson, Don	01-24-056-01 W5M	Lower Horseshoe Canyon	24-Jun-79	42.7	140.0	3.0	9.9	M35379.086842
Davis, Marshall	01-04-056-24 W4M	Bearpaw	2-Aug-79	33.5	110.0	10.1	33.0	M35377.063340
Deharn, John	NW 31-055-23 W4M	Bearpaw	11-Sep-81	57.6	189.0	47.2	155.0	M35377.054832
Derouin	NE 22-056-22 W4M	Oldman	16-Aug-85	45.7	150.0	6.7	22.0	M35377.055924
Derrien, Al	SE 06-058-24 W4M	Upper Surficial	21-Sep-82	14.6	48.0	5.5	18.0	M35377.166190
Detonnancour, Leonard	NE 25-055-26 W4M	Lower Horseshoe Canyon	21-Oct-82	48.8	160.0	7.6	25.0	M35377.055243
Detonnancour, Leonard	NE 25-055-26 W4M	Lower Horseshoe Canyon	16-May-87	48.8	160.0	3.7	12.0	M35377.055248
Dixon, William	SE 29-054-27 W4M	Middle Horseshoe Canyon	6-Feb-81	24.1	79.0	0.9	3.0	M35377.055715
Don Perry Real Estate	SE 24-054-25 W4M	Bearpaw	14-Jun-73	68.6	225.0	35.1	115.0	M35377.049612
Dowhaniuk, Bill	SE 18-058-23 W4M	Oldman	13-Aug-71	9.1	30.0	1.8	6.0	M35377.166053
Dowhaniuk, Don	NW 20-057-24 W4M	Bearpaw	22-Jan-81	33.5	110.0	6.1	20.0	M35377.058903
Du Perron, Floyd	04-01-054-26 W4M	Lower Horseshoe Canyon	17-Jun-83	64.0	210.0	9.8	32.0	M35377.231878
Dubois, Paul	SW 09-056-23 W4M	Lower Surficial	10-Mar-76	41.8	137.0	24.4	80.0	M35377.056595
Durrant, Star	04-35-057-20 W4M	Upper Surficial	7-May-77	10.4	34.0	0.9	3.0	M35377.077125
Dwernychuk, R.	NW 08-056-25 W4M	Lower Horseshoe Canyon	24-May-79	50.3	165.0	12.2	40.0	M35377.056565
Erickson, W.	05-28-057-22 W4M	Oldman	30-Oct-79	13.4	44.0	1.8	6.0	M35377.058902
Esso Resources Canada Ltd.	SE 29-057-21 W4M	Oldman	31-Aug-84	29.9	98.0	5.5	18.0	M35377.055998
Etty, Roy	SW 32-057-22 W4M	Oldman	26-Jul-82	30.5	100.0	3.7	12.0	M35377.059019
Evoy, Glen	NW 25-057-21 W4M	Upper Surficial	30-Sep-84	13.4	44.0	11.3	37.0	M35377.057651
Ewasiw	NE 24-056-23 W4M	Oldman	16-Jul-75	82.3	270.0	22.9	75.0	M35377.058844
Fassbender, C.	04-34-057-23 W4M	Oldman	19-Aug-63	53.6	176.0	6.1	20.0	M35377.060067
Fedoriw, L.	05-23-055-24 W4M	Lower Surficial	28-Apr-79	40.8	134.0	25.6	84.0	M35377.054111
Ferchoff, Walter	SW 09-056-23 W4M	Lower Surficial	15-Jul-72	21.0	69.0	11.0	36.0	M35377.056611
Ference, Bill	SW 10-055-26 W4M	Lower Horseshoe Canyon	6-Sep-83	45.7	150.0	7.6	25.0	M35377.054217
Fernhout, John	13-10-054-26 W4M	Lower Surficial	9-Jun-70	12.8	42.0	5.6	18.5	M35377.049841
Fewchuk, Bob	NE 07-055-23 W4M	Bearpaw	25-Sep-71	36.6	120.0	18.3	60.0	M35377.050502
Fink, A.	NW 07-056-26 W4M	Lower Horseshoe Canyon	23-Jul-75	35.1	115.0	-0.6	-2.0	M35377.065173
Forman, D.	SW 19-056-22 W4M	Oldman	28-Feb-74	85.6	281.0	38.1	125.0	M35377.055829
Fraser, John C.	SE 03-056-23 W4M	Upper Surficial	1-Apr-65	14.0	46.0	6.1	20.0	M35377.055596
Friedrick, O.	SE 30-054-27 W4M	Lower Horseshoe Canyon	19-May-76	25.9	85.0	6.1	20.0	M35377.050852
From, Earl	SE 15-057-22 W4M	Oldman	13-Oct-76	61.0	200.0	10.7	35.0	M35377.057939
Fulton, Ryan	SE 28-056-27 W4M	Lower Horseshoe Canyon	22-Apr-81	31.1	102.0	3.1	10.0	M35377.055938
Gabbey, H.	NE 23-055-24 W4M	Lower Surficial	18-Aug-86	48.8	160.0	31.0	101.7	M35377.054343
Gagnon, Clifford	SE 13-055-25 W4M	Bearpaw	28-Feb-86	41.2	135.0	5.5	18.0	M35377.054696
General Land Holdings	NE 26-054-27 W4M	Lower Surficial	6-May-80	19.2	63.0	12.2	40.0	M35377.050771
Geracitano, A.	SE 30-055-24 W4M	Bearpaw	26-Sep-84	45.7	150.0	2.4	8.0	M35377.054416
Glenday, J.	NW 18-054-24 W4M	Lower Horseshoe Canyon	1-Jun-73	61.0	200.0	28.7	94.0	M35377.231993
Gogal, Dennis M.	NW 19-055-23 W4M	Bearpaw	10-May-86	41.2	135.0	10.7	35.0	M35377.054318

**WATER WELLS RECOMMENDED FOR FIELD VERIFICATION**

Owner	Location	Aquifer Name	Date Water Well Drilled	Completed Depth		NPWL		UID
				Metres	Feet	Metres	Feet	
Goulet, Jim	NW 36-054-28 W4M	Lower Horseshoe Canyon	7-Oct-87	38.1	125.0	15.2	50.0	M35377.054412
Granger, Dwayne	SE 20-056-26 W4M	Lower Horseshoe Canyon	4-Apr-84	45.7	150.0	6.1	20.0	M35377.065197
Gravelle, Bob	SE 24-054-25 W4M	Bearpaw	1-Jul-70	62.5	205.0	27.4	90.0	M35377.049738
Gravelle, Robert	SW 11-057-26 W4M	Lower Horseshoe Canyon	16-May-80	70.1	230.0	22.9	75.0	M35377.058104
Hackman, J.	06-23-055-24 W4M	Lower Surficial	20-May-76	81.1	266.0	58.5	192.0	M35377.054059
Hall, Marshall	NE 17-056-22 W4M	Oldman	15-Jun-88	42.7	140.0	9.8	32.0	M35377.055795
Halun, M.	SE 34-057-21 W4M	Upper Surficial	23-Aug-78	26.8	88.0	4.3	14.0	M35377.057833
Hartmetz, Oliver	16-21-054-26 W4M	Lower Horseshoe Canyon	18-Apr-80	39.3	129.0	11.6	38.0	M35377.055009
Hawrelko, Josephine	10-32-057-22 W4M	Upper Surficial	30-Mar-78	4.9	16.0	2.4	8.0	M35377.059041
Heitel, Herman	SE 25-057-23 W4M	Oldman	2-Nov-83	30.5	100.0	9.1	30.0	M35377.059638
Hengen, Lee	NE 34-056-27 W4M	Lower Horseshoe Canyon	9-Mar-99	42.7	140.0	16.9	55.5	M36270.576622
Hewitt Estates	SE 06-056-23 W4M	Upper Surficial	25-Feb-76	47.6	156.0	23.5	77.0	M35377.065083
Hewitt, M. R.	04-06-056-23 W4M	Upper Surficial	3-Apr-64	39.6	130.0	25.6	84.0	M35377.055995
Hicks, Terry	SE 21-057-21 W4M	Birch Lake	6-Mar-79	61.0	200.0	4.3	14.0	M35377.067253
Hodgins, Buford	01-34-056-24 W4M	Bearpaw	22-Feb-83	67.1	220.0	12.8	42.0	M35377.057457
Hofs, Henry	SE 18-056-22 W4M	Oldman	27-Nov-73	61.0	200.0	3.1	10.0	M35377.055798
Holden, Ed	SW 18-054-25 W4M	Lower Horseshoe Canyon	11-Oct-78	42.7	140.0	21.3	70.0	M35377.049401
Huillery, Randy	SW 24-057-21 W4M	Birch Lake	13-May-81	48.8	160.0	15.2	50.0	M35377.057638
Hume, B.	SW 09-056-23 W4M	Lower Surficial	28-Jun-71	44.5	146.0	25.8	84.5	M35377.056663
Jeffery, J.	13-12-055-24 W4M	Bearpaw	16-Sep-82	51.8	170.0	10.7	35.0	M35377.054733
Jodoin, Albert	NE 13-057-24 W4M	Bearpaw	5-Aug-81	24.4	80.0	8.2	27.0	M35377.058683
Kapach, L	03-23-055-24 W4M	Bearpaw	22-Jan-76	77.4	254.0	51.8	170.0	M35377.054073
Kaup, Henry	SW 36-055-27 W4M	Lower Horseshoe Canyon	18-Mar-82	44.2	145.0	12.2	40.0	M35377.055264
Kelly, Don	01-28-054-26 W4M	Lower Horseshoe Canyon	22-Jul-75	54.9	180.0	24.1	79.0	M35377.055191
Kemper, T.	12-02-057-25 W4M	Lower Horseshoe Canyon	10-Sep-75	33.5	110.0	8.2	27.0	M35377.057896
Ken Payne Homes	SE 02-054-26 W4M	Lower Surficial	16-Jan-86	25.9	85.0	6.1	20.0	M35377.231948
Kennedy, R.	SE 23-055-24 W4M	Lower Surficial	11-Mar-86	59.4	195.0	33.5	110.0	M35377.053926
Kennett, Norman	NW 28-056-27 W4M	Lower Horseshoe Canyon	8-Jun-76	48.8	160.0	12.5	41.0	M35377.057153
Keylor, J.	01-13-056-25 W4M	Lower Horseshoe Canyon	15-Jun-76	44.2	145.0	8.5	28.0	M35377.056920
Kieftenheld, Perry & Harvey	SE 29-055-26 W4M	Lower Horseshoe Canyon	22-Apr-67	61.0	200.0	6.1	20.0	M35377.193803
Kieser, Kevin	NE 14-055-25 W4M	Lower Horseshoe Canyon	29-Sep-83	21.0	69.0	4.0	13.0	M35377.054775
Kieser, Robert	NE 26-056-26 W4M	Lower Horseshoe Canyon	29-Jun-76	18.3	60.0	3.1	10.0	M35377.057355
King, R.	NW 14-054-26 W4M	Bearpaw	22-Feb-74	88.4	290.0	21.9	72.0	M35377.049994
Klassen, A. & Frank	08-36-057-24 W4M	Oldman	8-Jun-81	25.0	82.0	6.4	21.0	M35377.183235
Klassen, Jim	NW 25-056-22 W4M	Oldman	22-Aug-75	45.7	150.0	6.1	20.0	M35377.055994
Klein, F	SW 23-056-25 W4M	Lower Horseshoe Canyon	30-May-74	54.9	180.0	7.6	25.0	M35377.057242
Kluthe, H.	05-30-055-24 W4M	Bearpaw	26-May-83	57.9	190.0	1.8	6.0	M35377.054414
Kluthe, Norman	13-34-054-26 W4M	Lower Horseshoe Canyon	1-Jun-83	45.7	150.0	15.2	50.0	M35377.055424
Koch, Otto	NW 34-054-27 W4M	Lower Horseshoe Canyon	12-Nov-87	29.3	96.0	3.7	12.0	M35377.054139
Kooznetsaff, Bill	SW 22-057-23 W4M	Upper Surficial	12-Jul-85	12.2	40.0	2.3	7.5	M35377.059321
Krajacid, George	SW 09-056-23 W4M	Lower Surficial	15-May-78	43.0	141.0	18.3	60.0	M35377.056668
Kremer, Ray	04-15-054-26 W4M	Lower Horseshoe Canyon	7-May-80	36.6	120.0	7.0	23.0	M35377.050030
Kreway, John	16-18-056-24 W4M	Lower Horseshoe Canyon	3-Oct-82	51.8	170.0	6.1	20.0	M35377.056830
Krupa, Eugene	NE 28-057-24 W4M	Bearpaw	7-Dec-81	80.8	265.0	14.6	48.0	M35377.067524
Krupa, John	SE 31-054-27 W4M	Lower Horseshoe Canyon	4-Apr-77	36.6	120.0	8.5	28.0	M35377.053912

**WATER WELLS RECOMMENDED FOR FIELD VERIFICATION**

Owner	Location	Aquifer Name	Date Water Well Drilled	Completed Depth		NPWL		UID
				Metres	Feet	Metres	Feet	
Kuiper, A. & D.	01-33-056-21 W4M	Upper Surficial	1-May-77	18.9	180.0	8.2	55.0	M35377.055931
Kuzyk, B.	NW 24-056-24 W4M	Upper Surficial	1-Apr-77	24.4	75.0	15.2	13.4	M35377.063437
Lakeside Dairy Ltd.	NW 14-057-24 W4M	Bearpaw	19-May-81	30.5	170.0	10.7	65.0	M35377.067485
Lakeside Dairy Ltd.	NW 14-057-24 W4M	Bearpaw	19-Nov-81	38.1	63.0	7.6	20.0	M35377.067486
Lamoureux, J.	SE 05-055-22 W4M	Lower Surficial	14-Sep-82	11.3	117.0	6.4	31.0	M35377.049635
Larsen, Peter	SE 04-056-22 W4M	Oldman	12-Aug-85	45.7	110.0	14.9	85.0	M35377.055338
Leclair, Douglas	SW 25-054-01 W5M	Lower Horseshoe Canyon	6-Oct-82	67.1	88.0	16.8	58.0	M35379.044373
Leitz, B.	SE 04-057-26 W4M	Lower Horseshoe Canyon	16-May-78	38.1	65.0	6.1	12.0	M35377.058011
Lema, Don	12-22-054-26 W4M	Lower Horseshoe Canyon	13-Aug-79	44.2	225.0	14.9	60.0	M35377.055038
Lemmens, Bud	NW 25-057-21 W4M	Oldman	7-Sep-83	23.8	155.0	7.3	15.0	M35377.057645
Litwin, Terry	NE 26-056-23 W4M	Oldman	30-Nov-78	70.1	39.0	21.3	10.0	M35377.058957
Lorenson, L.	13-18-054-24 W4M	Bearpaw	17-May-73	79.2	170.0	29.9	50.0	M35377.232009
Lozniack, W.	SW 23-055-24 W4M	Lower Surficial	22-Jul-77	75.0	180.0	55.5	65.0	M35377.053957
Mack, H.	SW 23-055-24 W4M	Lower Surficial	11-May-75	69.5	75.0	45.7	40.0	M35377.053996
Mahe, Alex	01-29-056-24 W4M	Lower Horseshoe Canyon	28-Sep-81	33.5	160.0	6.1	70.0	M35377.057274
Mahe, Pat	SW 13-057-26 W4M	Lower Horseshoe Canyon	13-Aug-76	53.3	115.0	10.7	40.0	M35377.058157
Majeau, Edmond	07-07-054-26 W4M	Lower Horseshoe Canyon	1-May-76	52.4	113.0	17.1	15.0	M35377.049689
Marshall, Marina	NE 19-055-26 W4M	Lower Horseshoe Canyon	16-Jul-74	54.9	110.0	12.2	7.0	M35377.054846
Mason, Jim	SE 13-058-24 W4M	Oldman	1-Aug-76	67.1	190.0	12.8	68.0	M35377.166231
Matiuk, John	SE 15-057-23 W4M	Upper Surficial	27-Jun-81	6.7	100.0	4.9	6.0	M35377.067284
Mcavay, G.	NW 14-056-23 W4M	Oldman	12-Oct-73	57.9	115.0	9.1	53.0	M35377.057366
Mcconnell, B.	SE 33-057-25 W4M	Bearpaw	13-Feb-80	30.5	255.0	13.7	67.0	M35377.059139
McGee, Debra	02-21-057-23 W4M	Oldman	11-Nov-81	61.0	160.0	48.8	35.0	M35377.059207
McKirdy, T.	NE 35-056-25 W4M	Lower Horseshoe Canyon	9-Mar-73	32.6	157.0	7.3	70.0	M35377.057546
McLaughlan, Wayne	SW 17-054-26 W4M	Lower Horseshoe Canyon	23-Jan-79	55.2	120.0	21.9	23.0	M35377.050162
McNally, Peter	SW 02-054-26 W4M	Lower Surficial	1-May-71	16.2	145.0	8.2	37.0	M35377.049163
McVay, Bill#Shil Shol Estates	NW 34-054-27 W4M	Lower Horseshoe Canyon	10-Dec-86	29.0	48.0	3.7	14.0	M35377.054136
Medwed, Ronald & Elizabeth	NE 28-055-26 W4M	Lower Horseshoe Canyon	10-Nov-80	19.8	60.0	1.8	44.0	M35377.055477
Medwid, Peter	SW 09-056-23 W4M	Lower Surficial	21-May-74	40.2	175.0	25.9	23.0	M35377.056589
Menzies, Neil & Laurie	01-13-054-01 W5M	Upper Surficial	19-May-81	34.8	210.0	21.3	70.0	M35379.043921
Mercier, Ray J.	08-15-054-26 W4M	Lower Surficial	18-Apr-80	46.9	137.0	13.7	50.0	M35377.050013
Michaluk, E.	SE 10-057-22 W4M	Oldman	14-Apr-80	61.0	120.0	16.8	16.0	M35377.057740
Miller	SW 13-056-23 W4M	Upper Surficial	15-Jul-65	6.7	180.0	2.4	70.0	M35377.057015
Mitchell, Richard	NW 31-054-27 W4M	Lower Horseshoe Canyon	3-Oct-79	36.9	130.0	8.2	40.0	M35377.053930
Montpetit, Jim	NE 08-058-24 W4M	Upper Surficial	28-Sep-79	21.3	184.0	14.3	30.0	M35377.166202
Montpetit, Martin	SW 17-058-24 W4M	Oldman	28-Jul-86	67.1	220.0	24.4	72.0	M35377.166244
Moore, L. W.	NE 19-054-25 W4M	Lower Horseshoe Canyon	1-Feb-70	28.0	110.0	11.6	54.0	M35377.049420
Morris, Robin	01-25-056-24 W4M	Upper Surficial	5-Nov-76	51.5	215.0	27.7	85.0	M35377.063466
Mulligan, Henry	NE 15-056-24 W4M	Bearpaw	14-Feb-83	54.9	120.0	11.6	26.0	M35377.056768
Murray, Norman A.	05-23-054-26 W4M	Lower Surficial	1-Oct-72	36.9	115.0	19.2	30.0	M35377.055050
Namao Ridge Estates	NE 22-055-24 W4M	Bearpaw	24-Mar-75	41.2	105.0	12.2	24.0	M35377.050886
Nicoll, George	05-24-057-22 W4M	Upper Surficial	31-Jul-77	15.9	260.0	4.0	110.0	M35377.058394
Ogilvie, R.	04-08-056-24 W4M	Lower Horseshoe Canyon	11-Aug-77	32.3	90.0	5.5	9.0	M35377.063359
Ogle, M.	SE 30-055-26 W4M	Lower Horseshoe Canyon	7-Apr-77	44.8	49.0	12.8	10.0	M35377.055672
Ozipko, Nester	16-10-056-24 W4M	Upper Surficial	25-May-81	10.4	73.0	10.7	35.0	M35377.063410

**WATER WELLS RECOMMENDED FOR FIELD VERIFICATION**

Owner	Location	Aquifer Name	Date Water Well Drilled	Completed Depth		NPWL		UID
				Metres	Feet	Metres	Feet	
P & P Finishing & Carpentry	SW 24-054-25 W4M	Upper Surficial	11-Jul-75	24.1	105.0	15.2	78.0	M35377.064333
Paquette, E. & A.	SW 17-055-27 W4M	Lower Horseshoe Canyon	5-Nov-82	35.1	135.0	19.8	45.0	M35377.069170
Park, Bob	NW 12-057-24 W4M	Bearpaw	1-Apr-74	36.6	85.0	26.2	57.0	M35377.067436
Pasay, Dan	SW 14-055-25 W4M	Lower Horseshoe Canyon	14-Jun-77	33.5	162.0	5.5	75.0	M35377.054743
Patrick, Ed	12-30-054-27 W4M	Lower Surficial	22-Dec-84	27.4	160.0	10.7	98.0	M35377.050887
Pauline, R F	NE 33-056-25 W4M	Lower Horseshoe Canyon	8-May-80	46.0	230.0	11.0	96.0	M35377.063477
Pelletier, Omer	NW 01-058-25 W4M	Oldman		71.6	185.0	13.7	18.0	M35377.169443
Pelletier, Paul	NW 12-058-25 W4M	Oldman	29-May-84	73.2	120.0	18.9	45.0	M35377.169500
Perdue, Pat	04-30-057-23 W4M	Oldman	25-Apr-77	100.6	104.0	38.1	30.0	M35377.059948
Perrault, Marcel	13-23-057-26 W4M	Lower Horseshoe Canyon	19-Jun-57	37.8	160.0	10.7	46.0	M35377.056041
Pestera, Brent & Ingrid	SW 22-057-23 W4M	Upper Surficial	28-Jul-89	8.5	180.0	3.1	40.0	M35377.067289
Petsula, Mr. J.	SW 23-055-24 W4M	Bearpaw	26-Apr-75	69.8	160.0	45.8	50.0	M35377.055778
Phair, R	05-23-054-24 W4M	Bearpaw	27-Jul-78	68.3	120.0	43.0	53.0	M35377.064233
Poliwchuck, Paul	SW 11-057-21 W4M	Birch Lake	26-Jan-76	25.9	30.0	7.6	6.0	M35377.067249
Pollard, Russ	NW 23-054-26 W4M	Lower Horseshoe Canyon	18-May-79	44.8	102.0	23.2	81.0	M35377.055078
Potter, R.	SE 30-055-23 W4M	Bearpaw	29-Mar-71	39.6	105.0	9.8	30.0	M35377.054713
Prefontaine, Frank	NE 26-057-24 W4M	Bearpaw	30-Apr-79	91.4	122.0	38.7	20.0	M35377.067515
Ranson, Jack	SW 09-056-23 W4M	Bearpaw	22-Apr-72	36.6	172.0	27.8	35.0	M35377.056645
Reid, Beverly	SW 18-057-21 W4M	Oldman	21-May-81	45.7	70.0	3.7	25.0	M35377.067251
Rigney, R. L.	14-23-056-24 W4M	Upper Surficial	8-Jul-64	42.4	230.0	15.2	55.0	M35377.057045
Rockwell	NW 30-056-23 W4M	Bearpaw	4-Dec-67	39.3	150.0	25.9	94.0	M35377.059322
Romaniuk, C.	NW 30-057-21 W4M	Oldman	16-Jun-78	29.6	220.0	9.1	28.0	M35377.057710
Rosychuk, Curt	01-02-057-21 W4M	Birch Lake	5-Oct-87	47.2	87.0	13.3	30.0	M35377.057253
Rusnell, Carl	SW 24-054-25 W4M	Lower Horseshoe Canyon	17-Jun-80	53.3	97.0	22.9	60.0	M35377.055508
Saligo's Service Ltd.		Bearpaw	22-Jul-66	42.7	70.0	18.3	39.0	M35377.064233
Salisbury, Vern	NE 30-056-22 W4M	Upper Surficial	21-Feb-78	13.7	43.0	7.9	15.0	M35377.057512
Saunders, Gecil	SE 27-056-22 W4M	Oldman	27-Aug-84	35.7	80.0	6.1	27.0	M35377.056131
Sawka, Walter	SE 04-057-21 W4M	Oldman	2-Dec-76	30.5	105.0	4.6	15.0	M35377.057263
Schafers, Shane	09-12-054-27 W4M	Lower Surficial	9-Jun-93	8.2	110.0	3.1	57.0	M35377.178669
Schayes, E.	13-11-056-25 W4M	Lower Horseshoe Canyon		30.5	140.0	0.6	42.0	M35377.056887
Schmermund, Don	SE 01-055-01 W5M	Lower Horseshoe Canyon	23-Apr-76	33.5	180.0	7.6	38.0	M35379.043424
Schmermund, Ray	SE 07-055-27 W4M	Lower Horseshoe Canyon	1-Jul-69	20.1	55.0	1.8	25.0	M35377.054557
Schneider, E.	05-13-056-25 W4M	Lower Horseshoe Canyon	1-Aug-76	48.8	180.0	7.1	45.0	M35377.056944
Schofield, Gerald	SW 24-054-25 W4M	Lower Horseshoe Canyon	7-Apr-70	57.9	210.0	39.0	40.0	M35377.064335
Schwing, Roman	SE 04-057-21 W4M	Oldman	3-Aug-79	27.4	160.0	5.2	65.0	M35377.057267
Sharma, R. & G.	SW 14-057-23 W4M	Upper Surficial	18-Sep-82	2.4	130.0	1.2	22.0	M35377.067283
Sharrun, Ken	SW 26-056-22 W4M	Oldman	1-Apr-73	38.1	97.0	4.6	25.0	M35377.056054
Sitek, Larry	NW 35-057-20 W4M	Birch Lake	1-Jun-76	22.9	54.0	9.8	20.0	M35377.057449
Skidmore, L.	SW 23-055-24 W4M	Bearpaw	18-Aug-74	76.2	185.0	54.7	45.0	M35377.054077
Sobolewski, S.	SE 04-055-27 W4M	Lower Horseshoe Canyon	17-May-73	64.0	180.0	12.2	90.0	M35377.054496
Soderstrom, Ed	NE 31-056-22 W4M	Oldman	20-Sep-74	41.2	76.0	13.7	24.0	M35377.056221
Soetaert, Rene	16-29-054-26 W4M	Lower Horseshoe Canyon	6-Oct-82	33.5	120.0	8.5	20.0	M35377.055242
Southwood, Thomas	NW 01-057-24 W4M	Bearpaw	30-Mar-83	36.6	80.0	5.8	9.7	M35377.057848
Spaeth, Werner	SE 34-057-26 W4M	Lower Horseshoe Canyon	16-Aug-80	32.0	230.0	6.1	68.0	M35377.058548
Spilak, E.	SW 11-056-25 W4M	Lower Horseshoe Canyon	27-Nov-73	38.1	106.0	4.6	18.0	M35377.063439