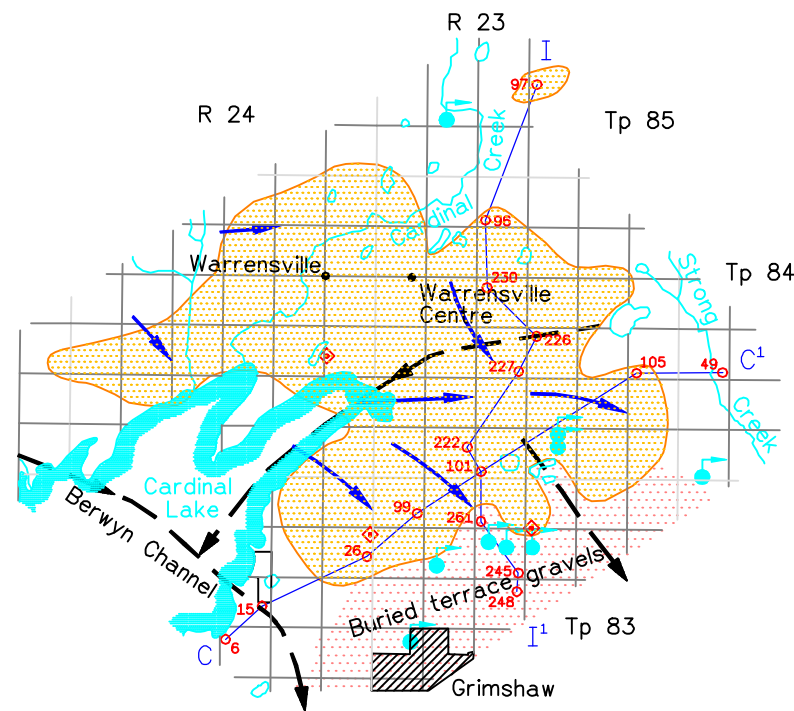
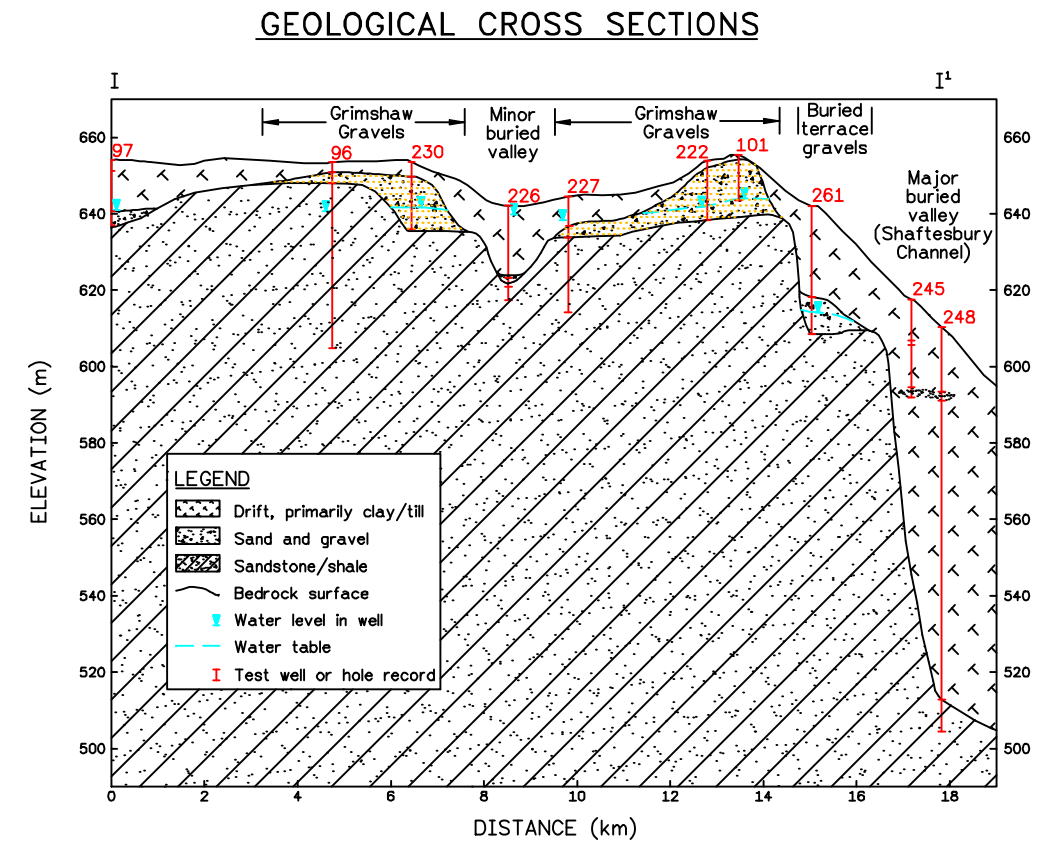


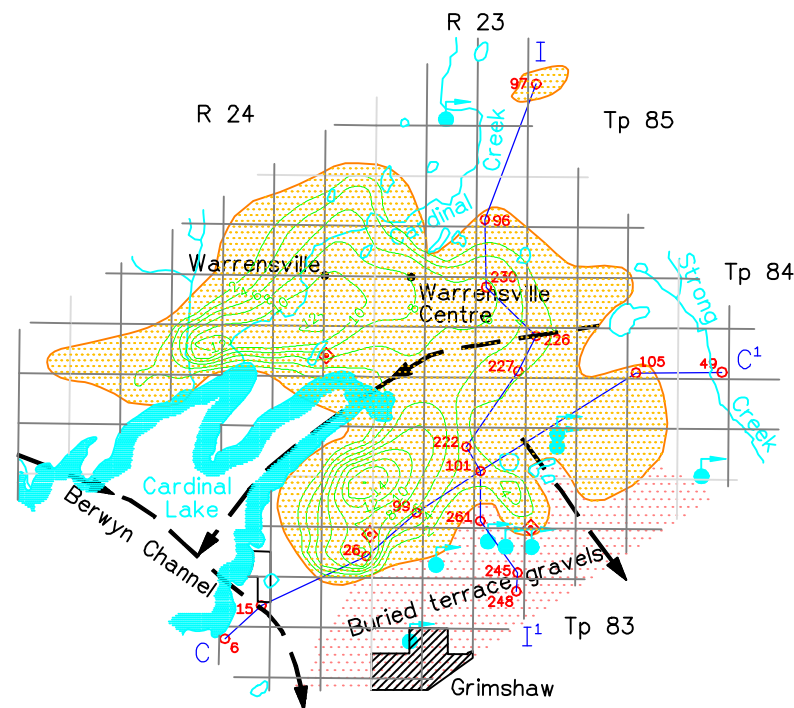
LOCATION PLAN



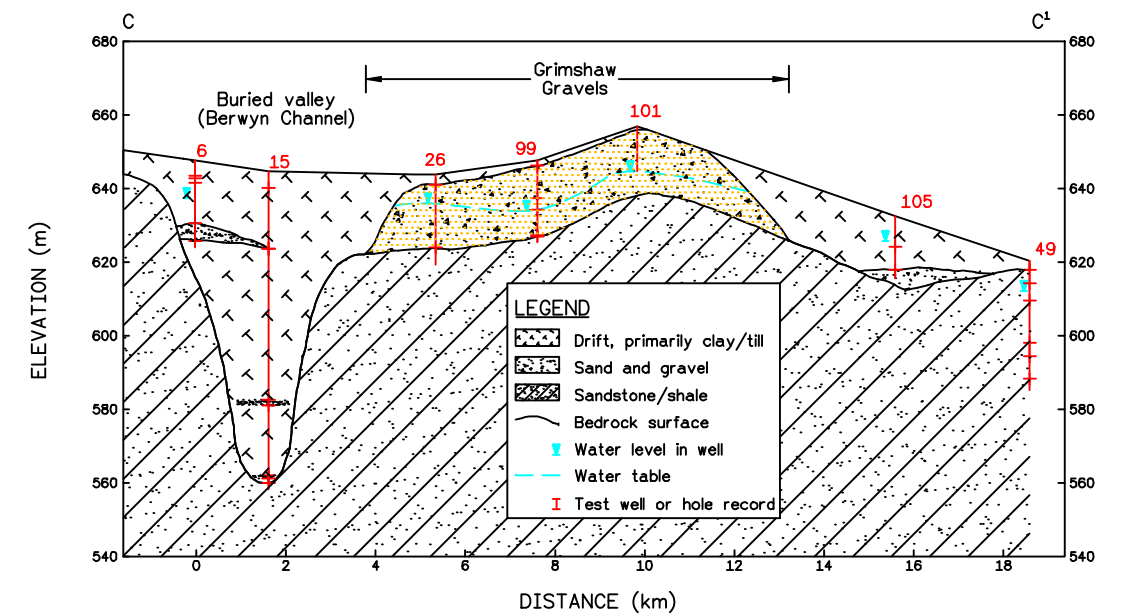
INTERPRETED GROUNDWATER FLOW DIRECTION



- LEGEND**
- Approximate extent of Grimshaw Gravels Aquifer
 - - - Approximate buried valley location
 - Approximate groundwater flow direction
 - Aquifer saturated thickness (Contour Interval = 2 m)
 - Spring area
 - 184○ Test hole/well site
 - ◇ Municipal well



INTERPRETED SATURATED THICKNESS



Note: The shown preliminary maps and cross sections were prepared from selected drillers' logs filed with the Alberta Environmental Protection Groundwater Information Centre (GIC) to June 1995. Considerable geological interpretation was required to prepare these figures and additional test drilling and/or field surveying would be required to confirm that the geological conditions, groundwater levels and flow directions are as shown.

	GRIMSHAW GRAVELS AQUIFER		
	CENTRAL LOBE		
Scale AS SHOWN	Date JULY, 1996	PFRA No.	FIGURE B3