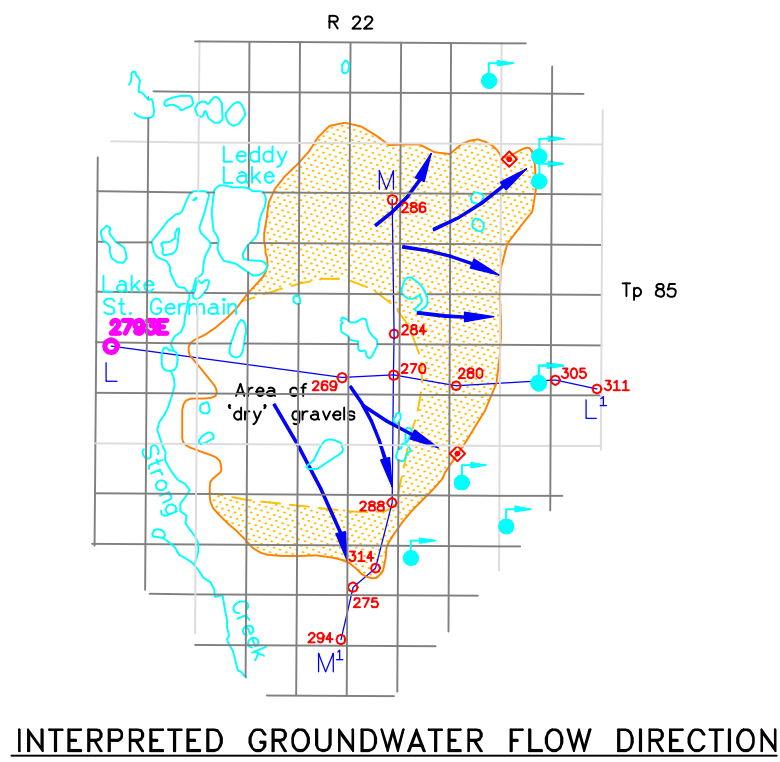


LOCATION PLAN

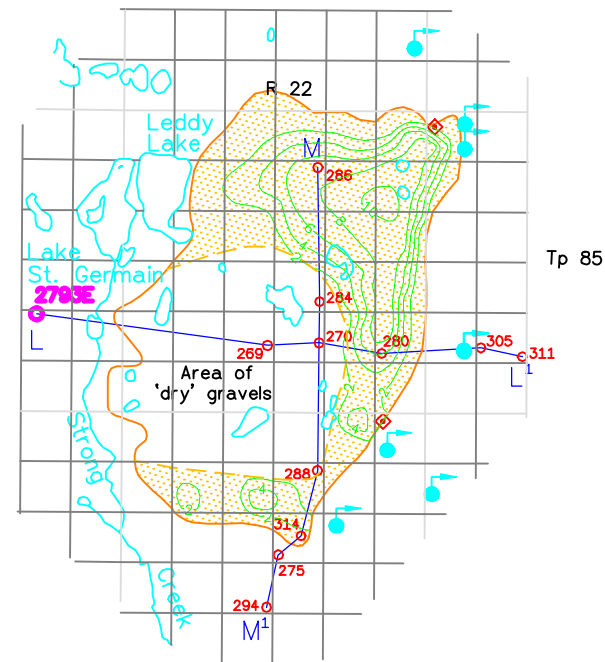


INTERPRETED GROUNDWATER FLOW DIRECTION



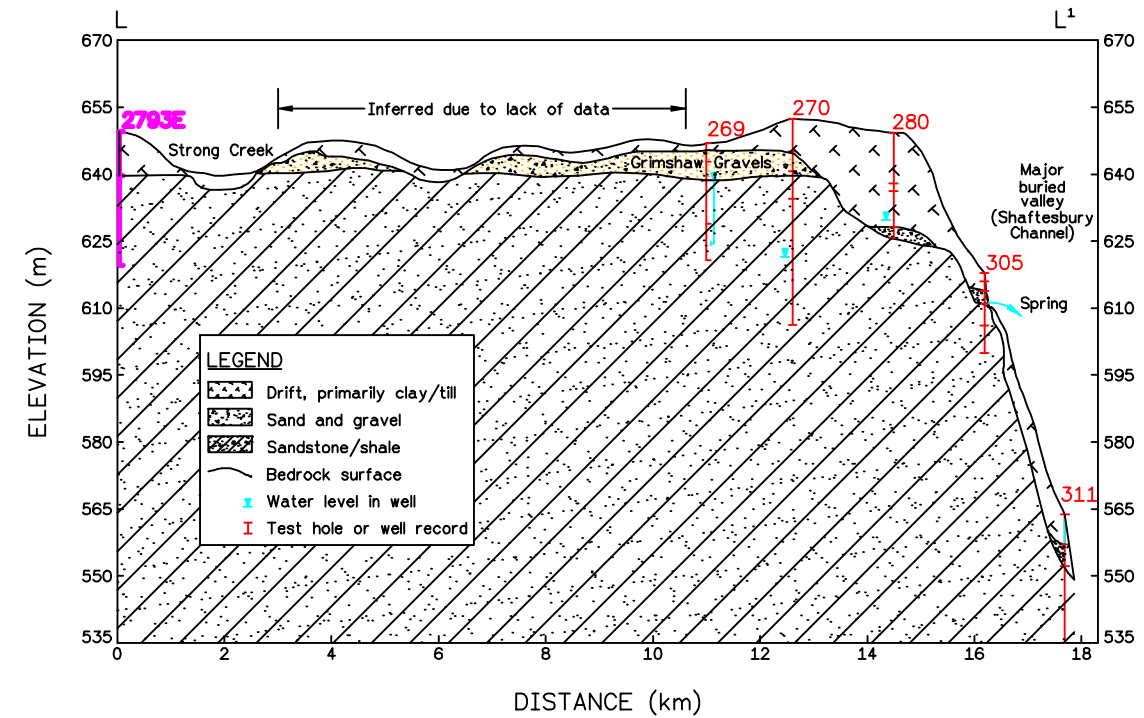
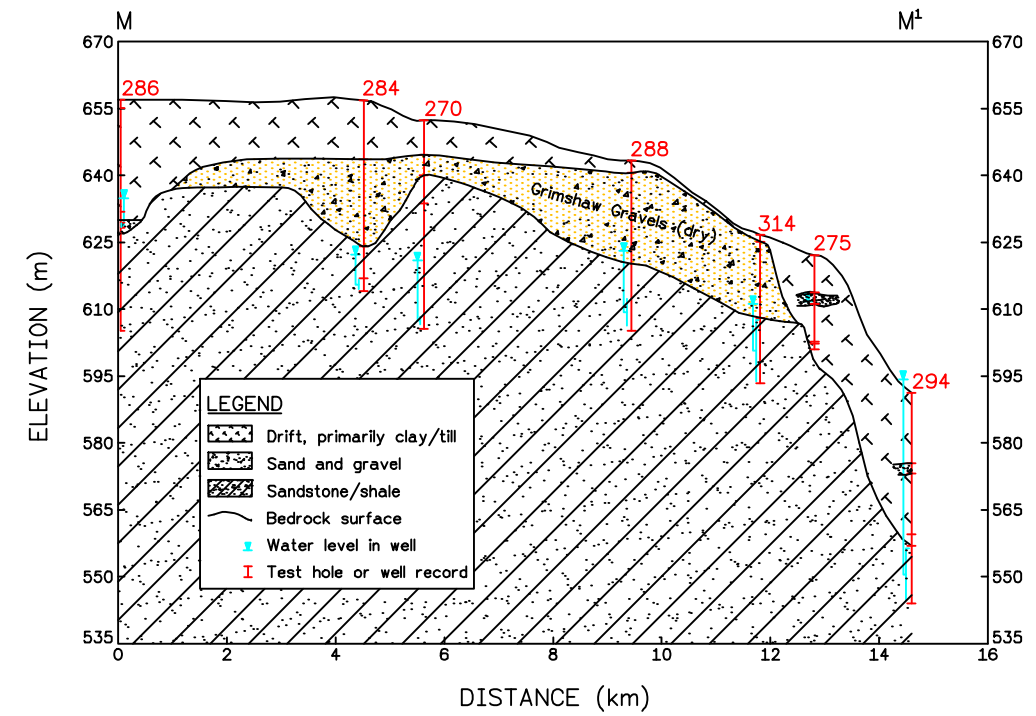
LEGEND

- Approximate extent of Grimshaw gravels Aquifer
- Approximate groundwater flow direction
- Spring area
- Aquifer saturated thickness (Contour Interval = 2 m)
- - - Approximate buried valley location
- 184 Test hole/well site
- ◇ Municipal well
- 1994 Test drilling program



INTERPRETED SATURATED THICKNESS

GEOLOGICAL CROSS SECTIONS



Note: The shown preliminary maps and cross sections were prepared from selected drillers' logs filed with the Alberta Environmental Protection Groundwater Information Centre (GIC) to June 1995. Considerable geological interpretation was required to prepare these figures and additional test drilling and/or field surveying would be required to confirm that the geological conditions, groundwater levels and flow directions are as shown.

	<b>GRIMSHAW GRAVELS AQUIFER</b>		
	<b>NORTHEAST LOBE</b>		
Scale AS SHOWN	Date JULY, 1996	PFRA No.	FIGURE B4