

Fig 1: Hog Operations - RM Hanover

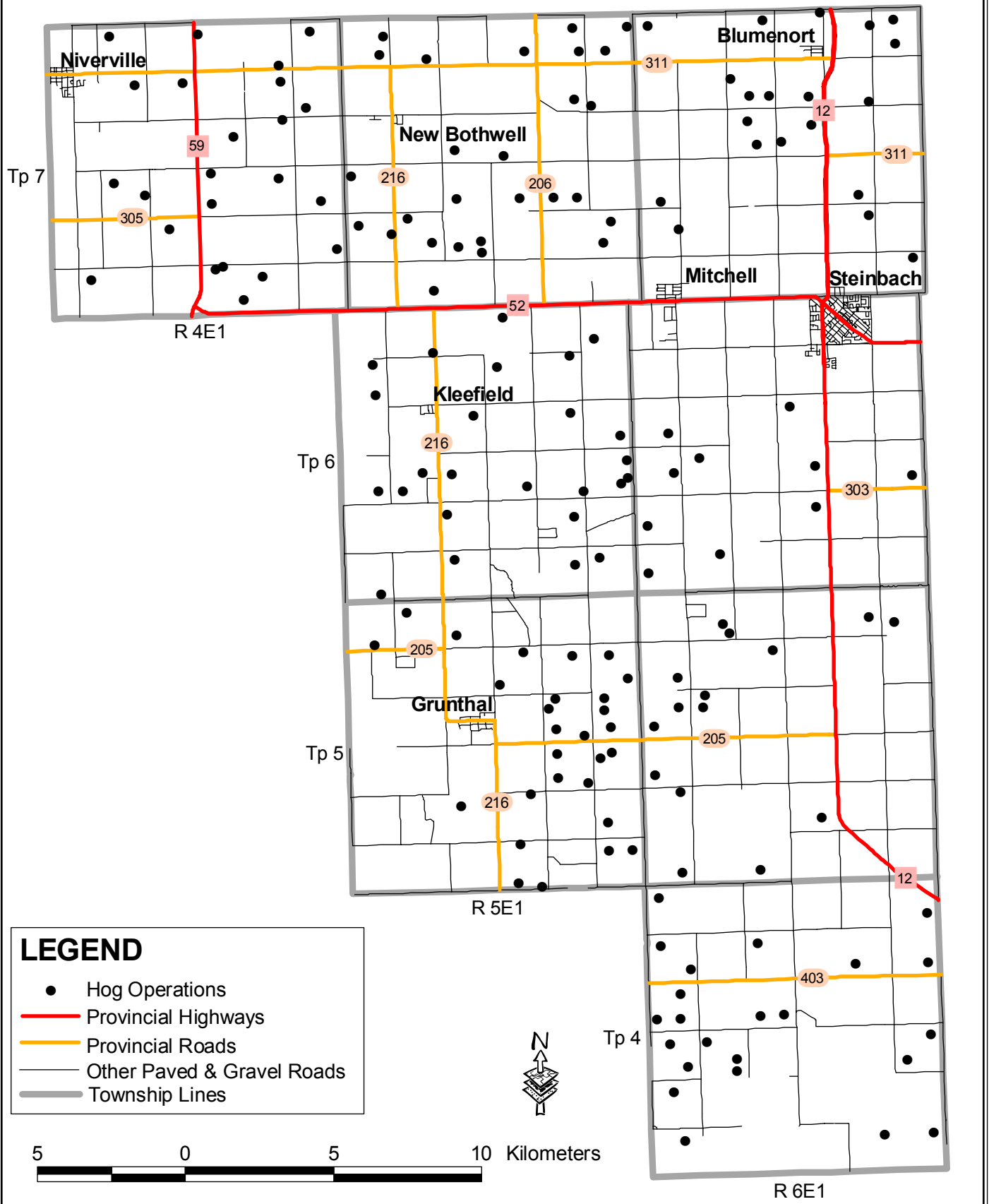
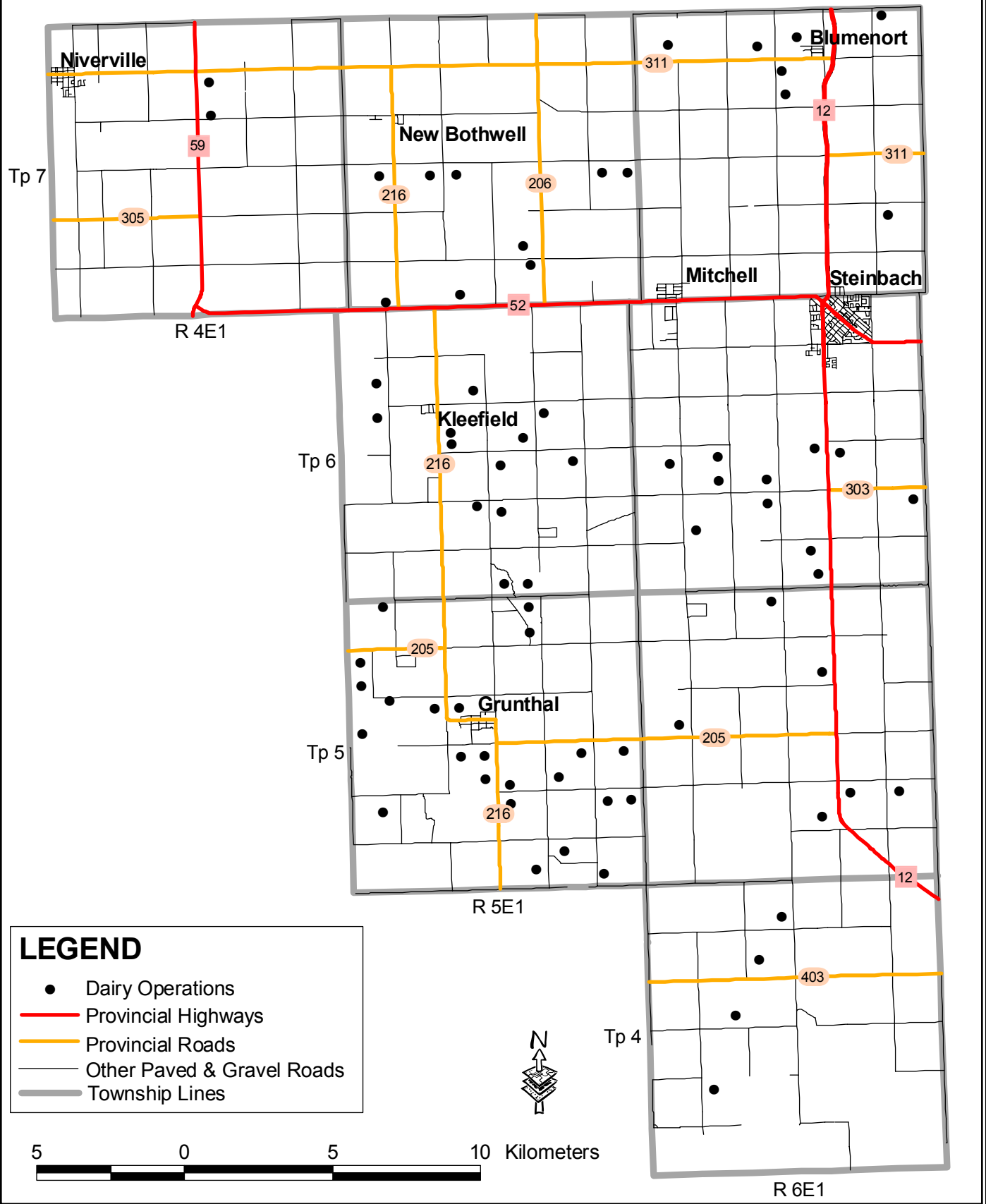


Fig 2: Dairy Operations - RM Hanover



LEGEND

- Dairy Operations
- Provincial Highways
- Provincial Roads
- Other Paved & Gravel Roads
- Township Lines

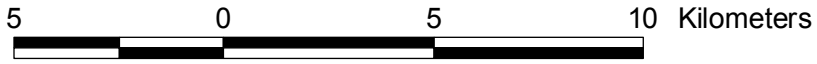


Fig 3: Beef Operations - RM Hanover

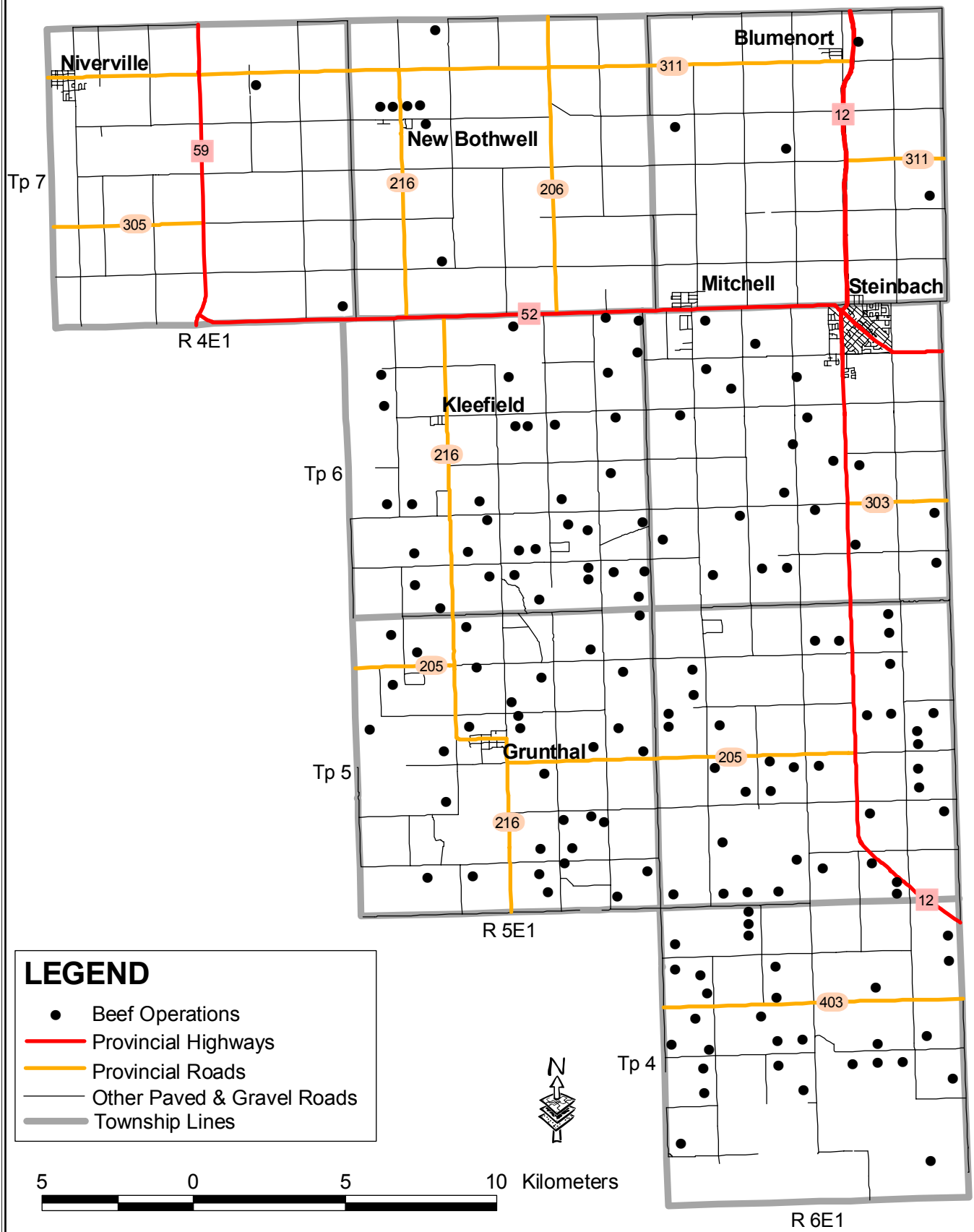


Fig 4: Chicken Operations - RM Hanover

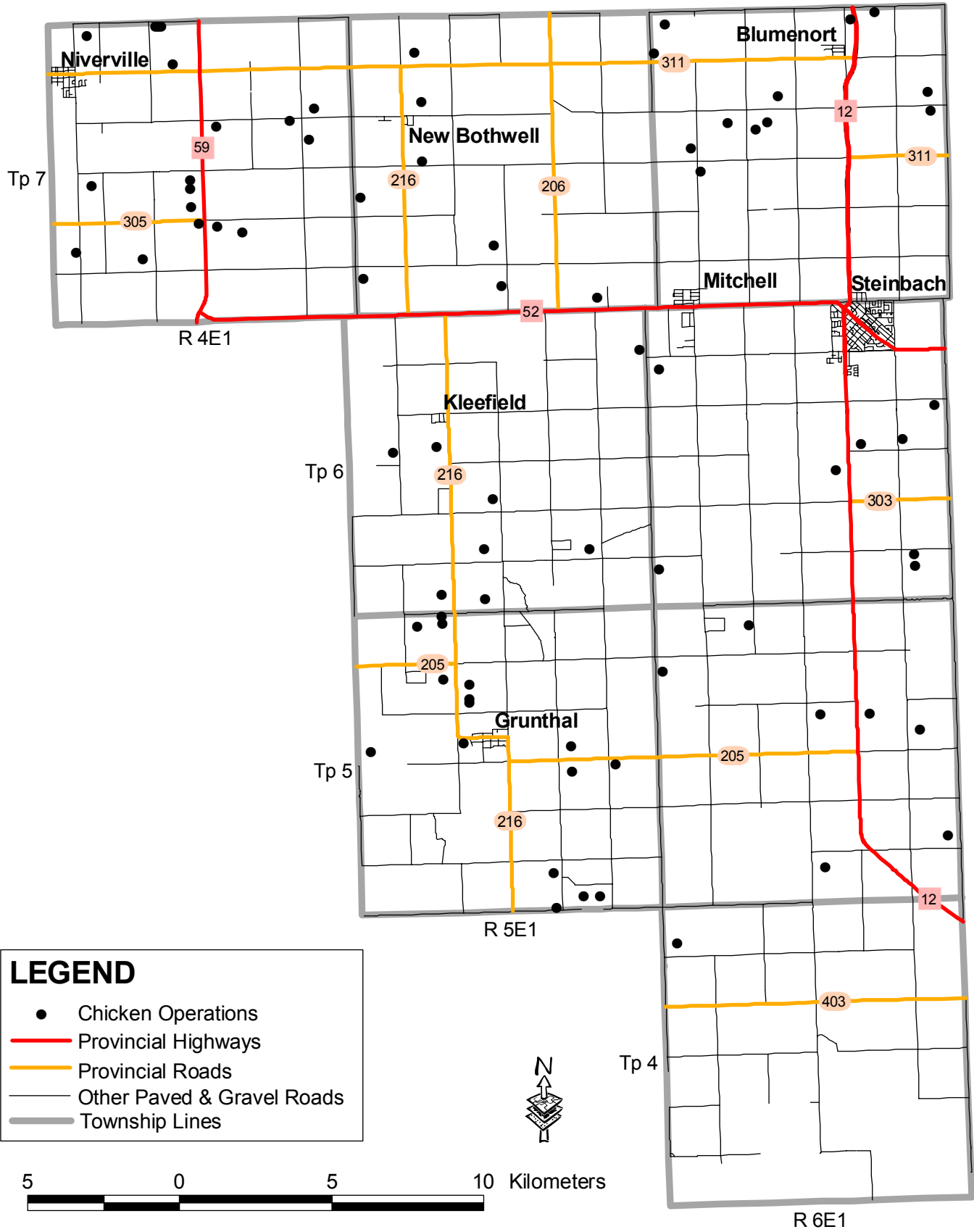
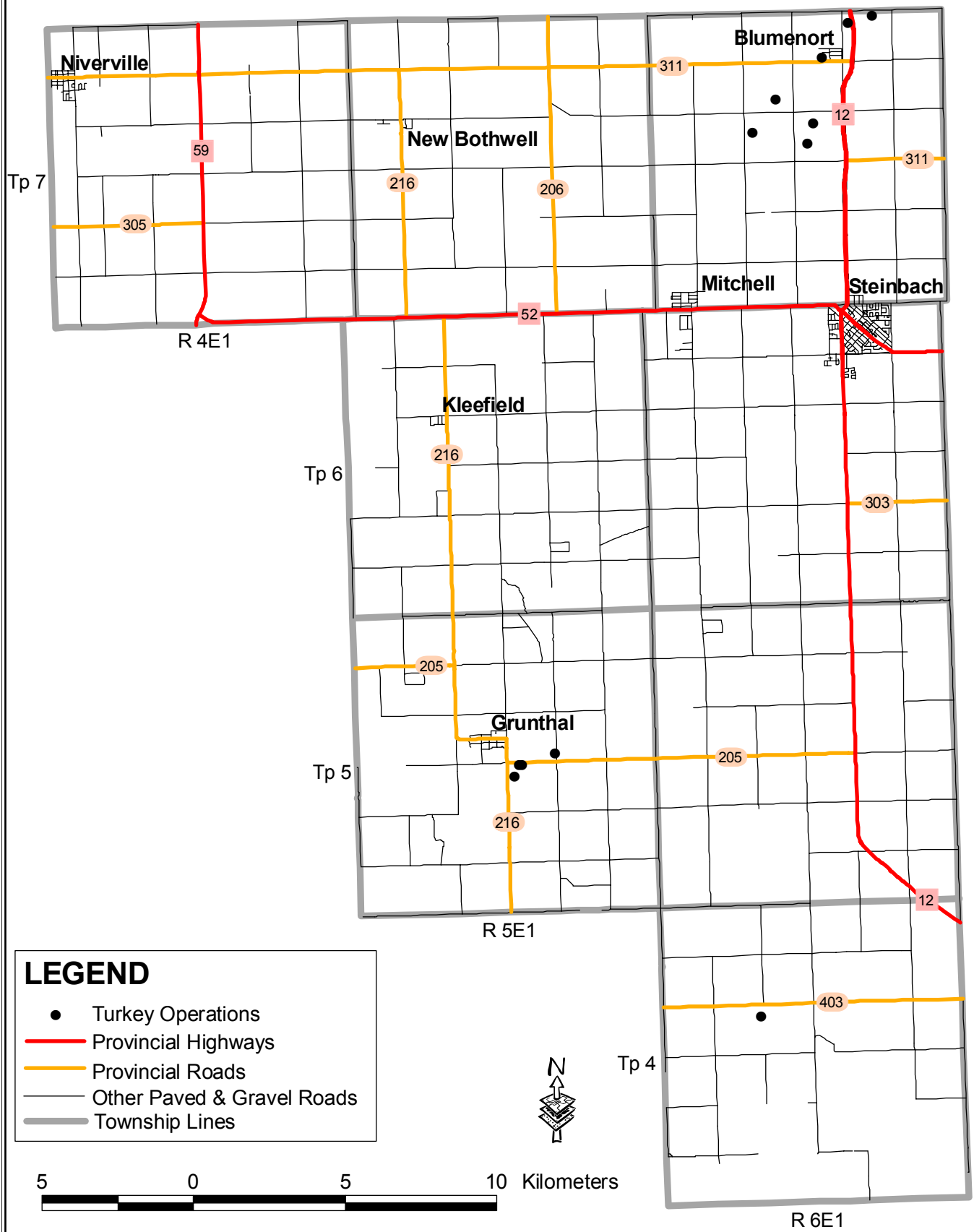


Fig 5: Turkey Operations - RM Hanover



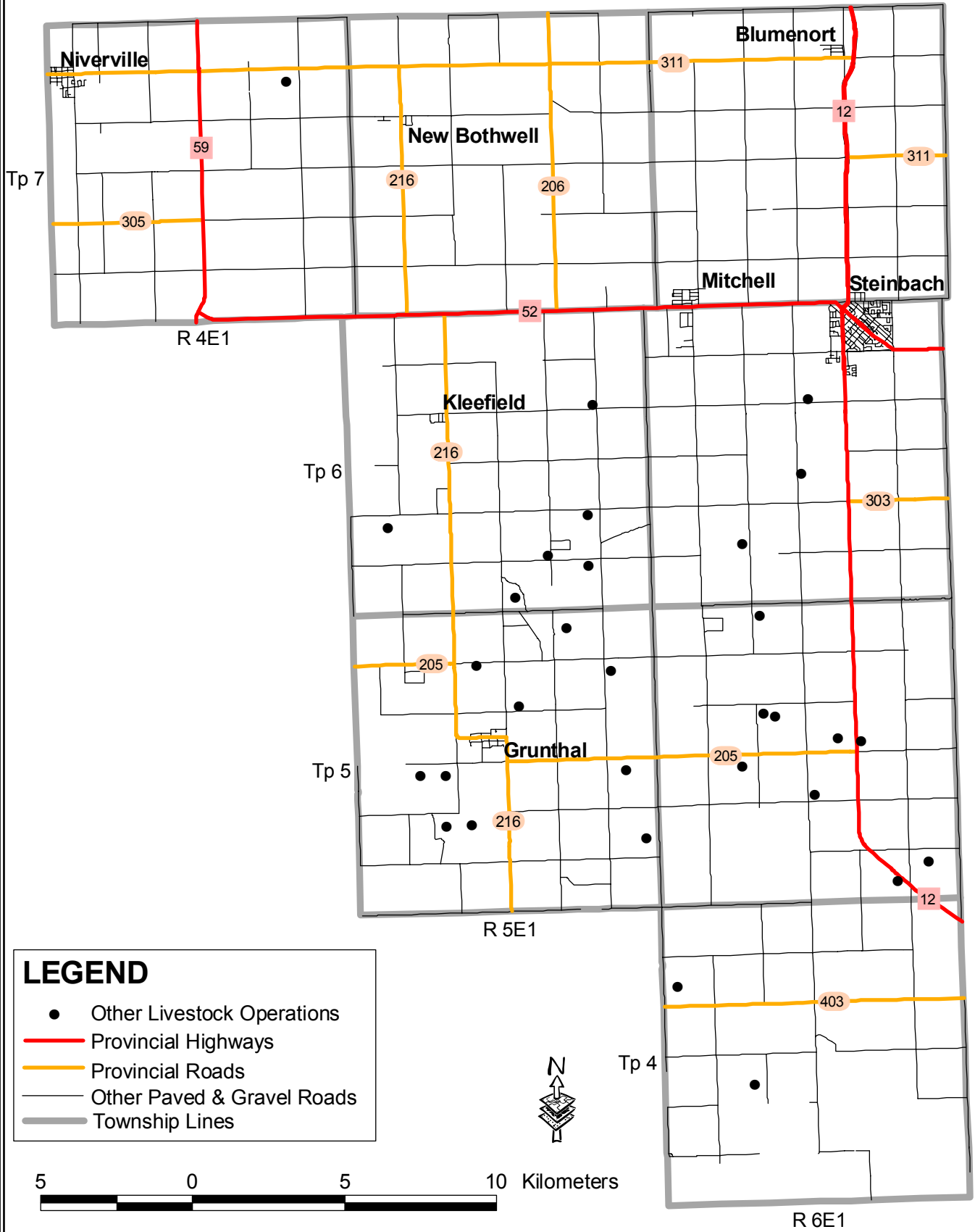
LEGEND

- Turkey Operations
- Provincial Highways
- Provincial Roads
- Other Paved & Gravel Roads
- Township Lines

N

5 0 5 10 Kilometers

Fig 6: Other Livestock Operations - RM Hanover

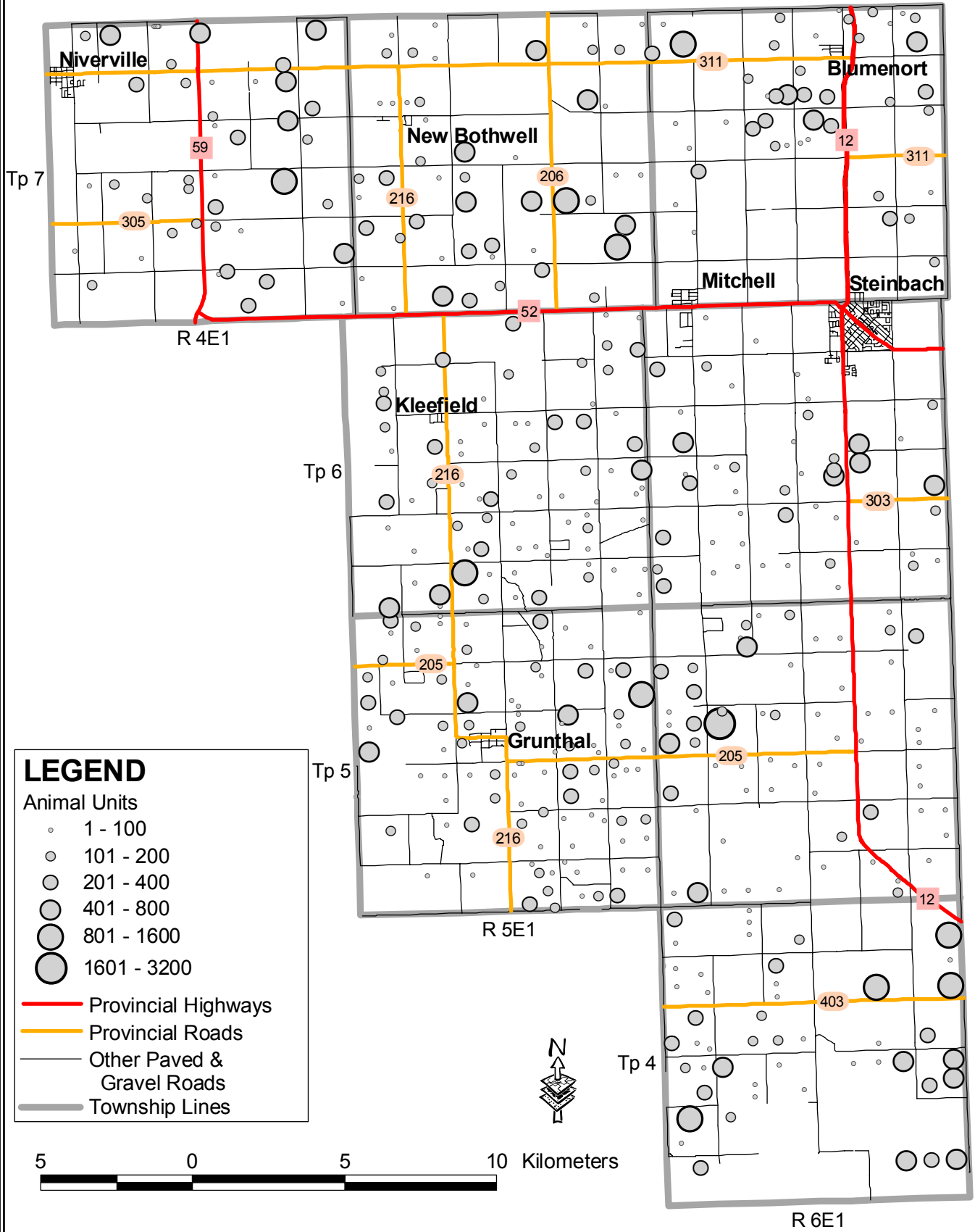


LEGEND

- Other Livestock Operations
- Provincial Highways
- Provincial Roads
- Other Paved & Gravel Roads
- Township Lines

5 0 5 10 Kilometers

Fig 7: Total Animal Units - RM Hanover



LEGEND

Animal Units

- 1 - 100
- 101 - 200
- 201 - 400
- 401 - 800
- 801 - 1600
- 1601 - 3200

- Provincial Highways
- Provincial Roads
- Other Paved & Gravel Roads
- Township Lines

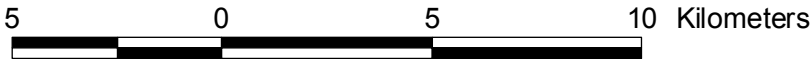
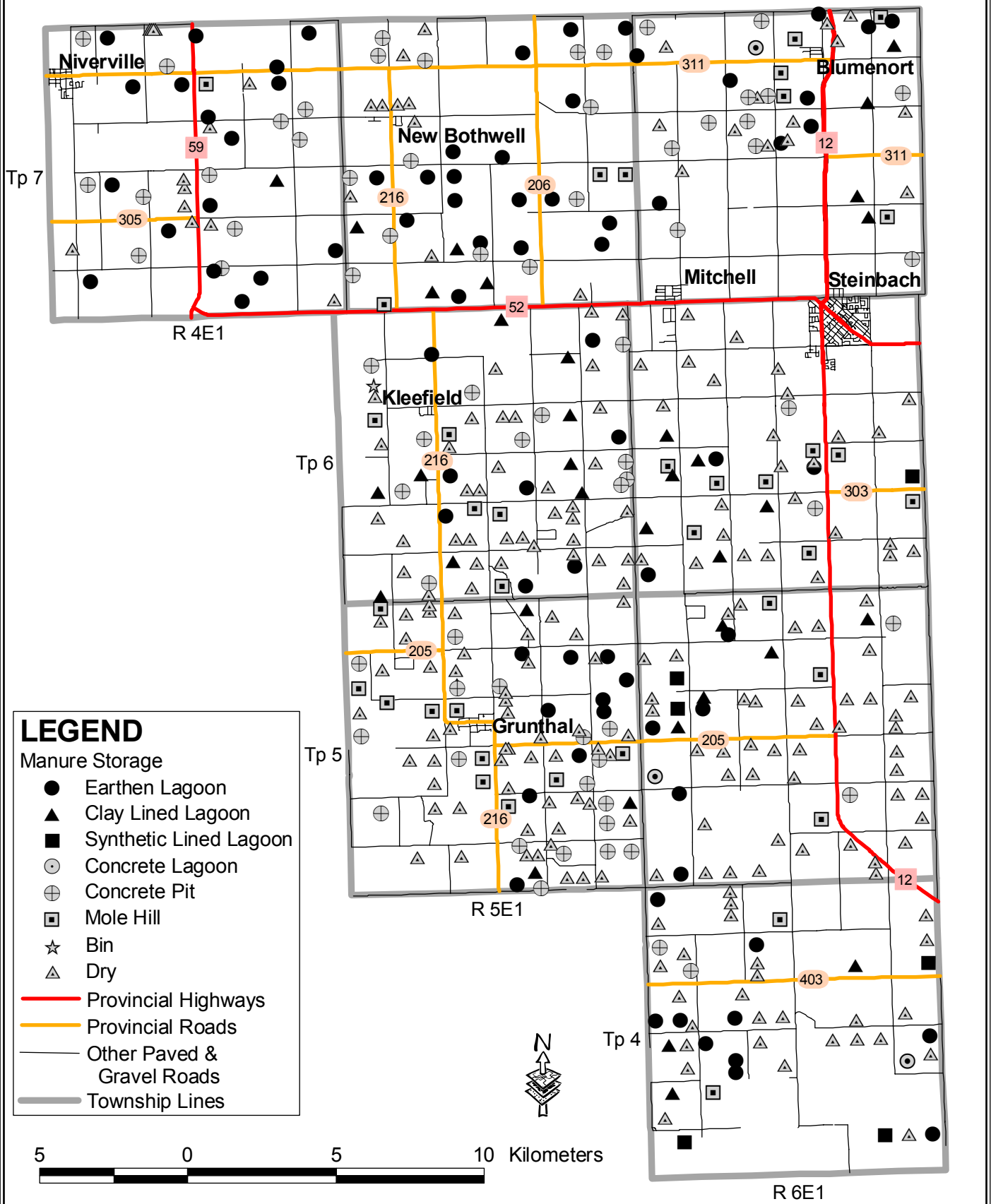


Fig 8: Manure Storage - RM Hanover



LEGEND

Manure Storage

- Earthen Lagoon
- ▲ Clay Lined Lagoon
- Synthetic Lined Lagoon
- ⊕ Concrete Lagoon
- ⊕ Concrete Pit
- ⊠ Mole Hill
- ★ Bin
- △ Dry

— Provincial Highways

— Provincial Roads

— Other Paved & Gravel Roads

— Township Lines

