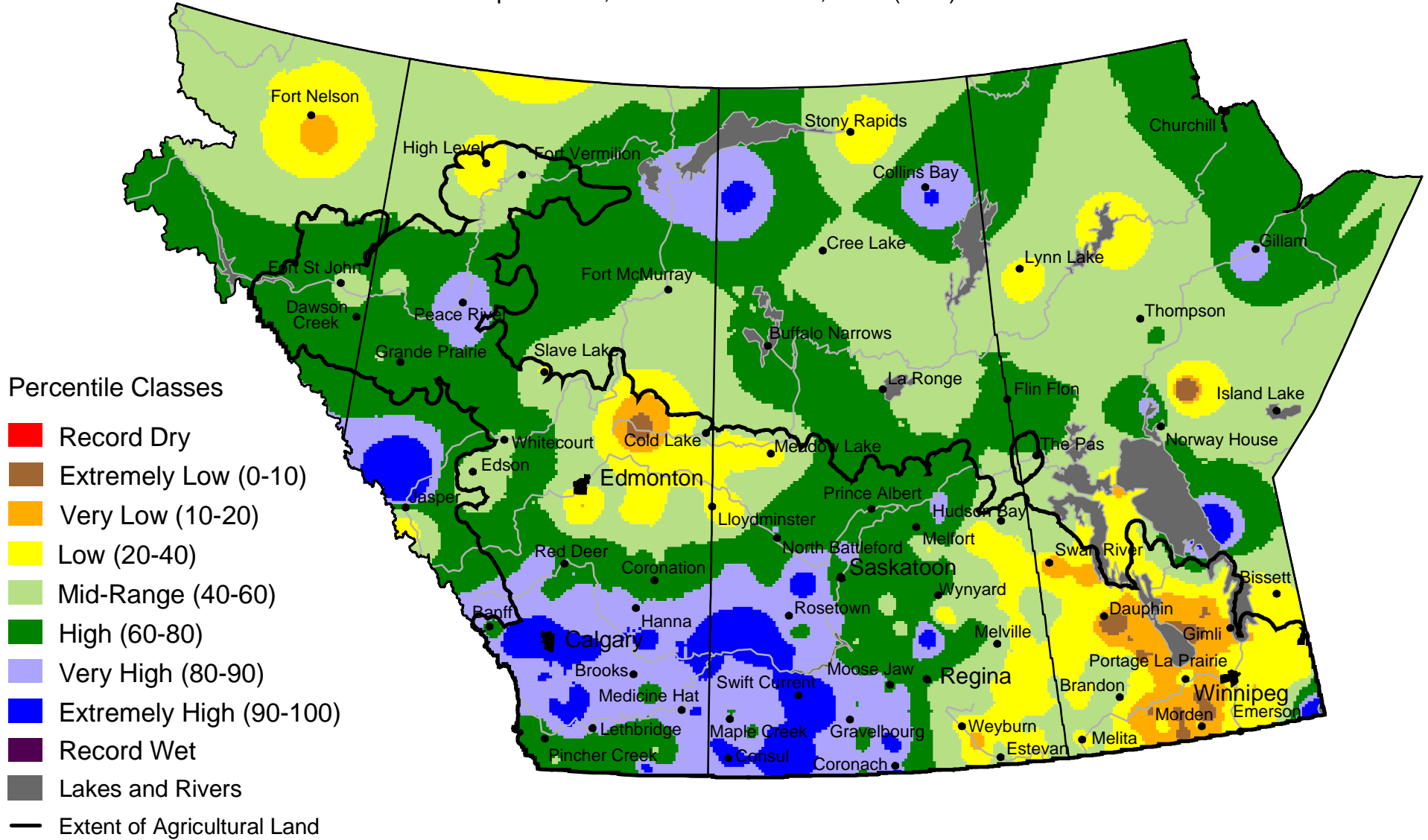




# Current Precipitation Compared to Historical Distribution

September 1, 2002 to October 30, 2002 (A.M.)



[www.agr.gc.ca/pfra/drought](http://www.agr.gc.ca/pfra/drought)

Prepared by Agriculture and Agri-Food Canada (PFRA) using data from the Timely Climate Monitoring Network and the many federal and provincial agencies and volunteers that support it.

