



Health
Canada

Santé
Canada

Tobacco Control
Programme

Programme de la lutte
au tabagisme

Ottawa, Canada K1A 0K9

www.GoSmokefree.ca

Domestic and Fine-cut Sales Charts

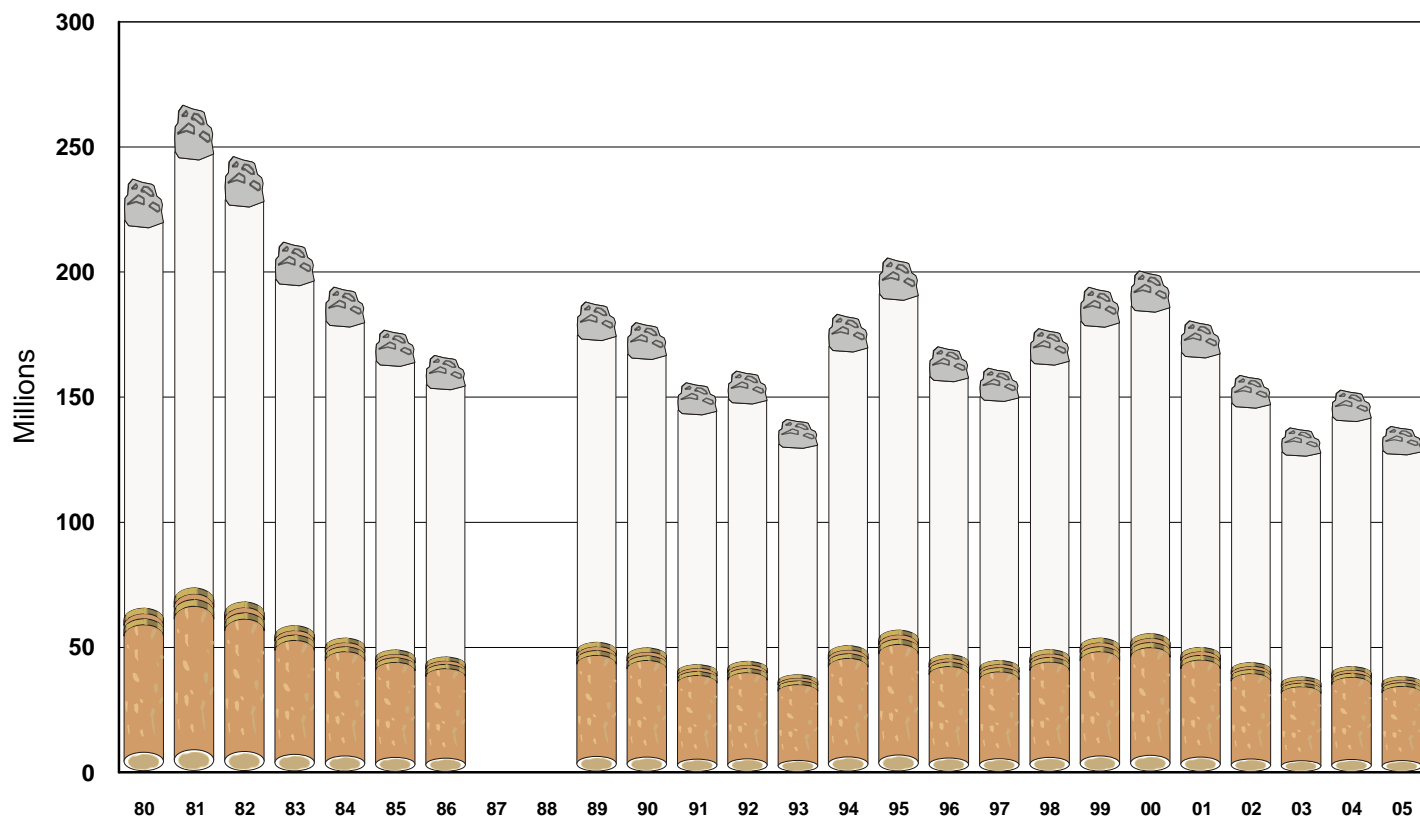
Prince Edward Island 1980 - 2005

June, 2006

Canada

Domestic Cigarette Sales 1980 - 2005

Prince Edward Island

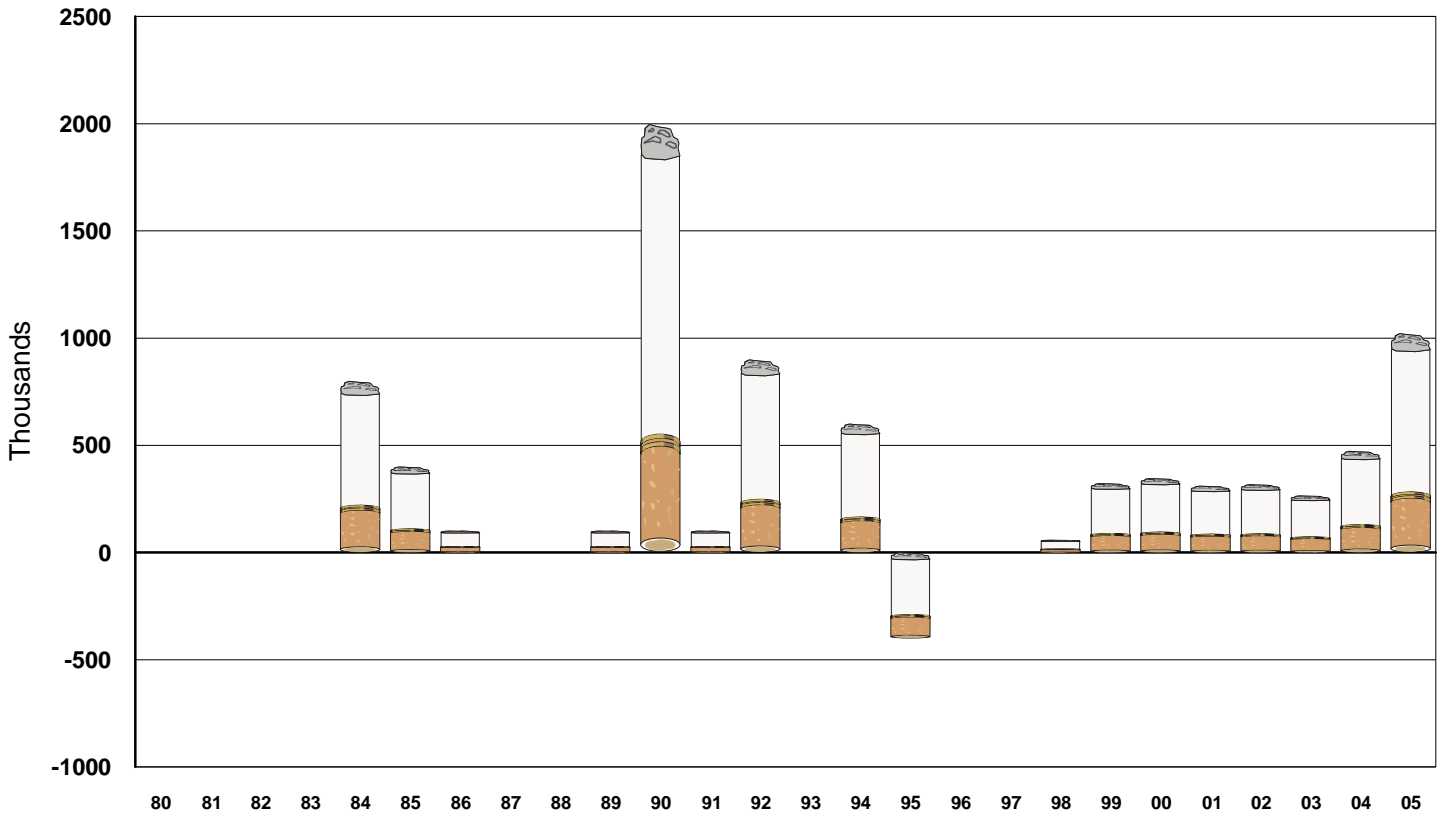


Year	Units of Cigarettes
1980	237,700,000
1981	267,200,000
1982	246,700,000
1983	212,400,000
1984	194,400,000
1985	177,200,000
1986	167,000,000
1987*	
1988*	
1989	188,439,000
1990	180,169,000
1991	156,083,000
1992	160,746,000
1993	141,410,400
1994	183,461,400
1995	205,998,600
1996	170,478,000
1997	161,910,000
1998	177,786,400
1999	194,339,000
2000	200,845,325
2001	180,898,950
2002	159,013,165
2003	138,049,020
2004	153,155,655
2005	138,550,595

*Provincial sales not available for 1987 and 1988



Imported Cigarette Sales 1980 - 2005 Prince Edward Island



Year Units of Cigarettes

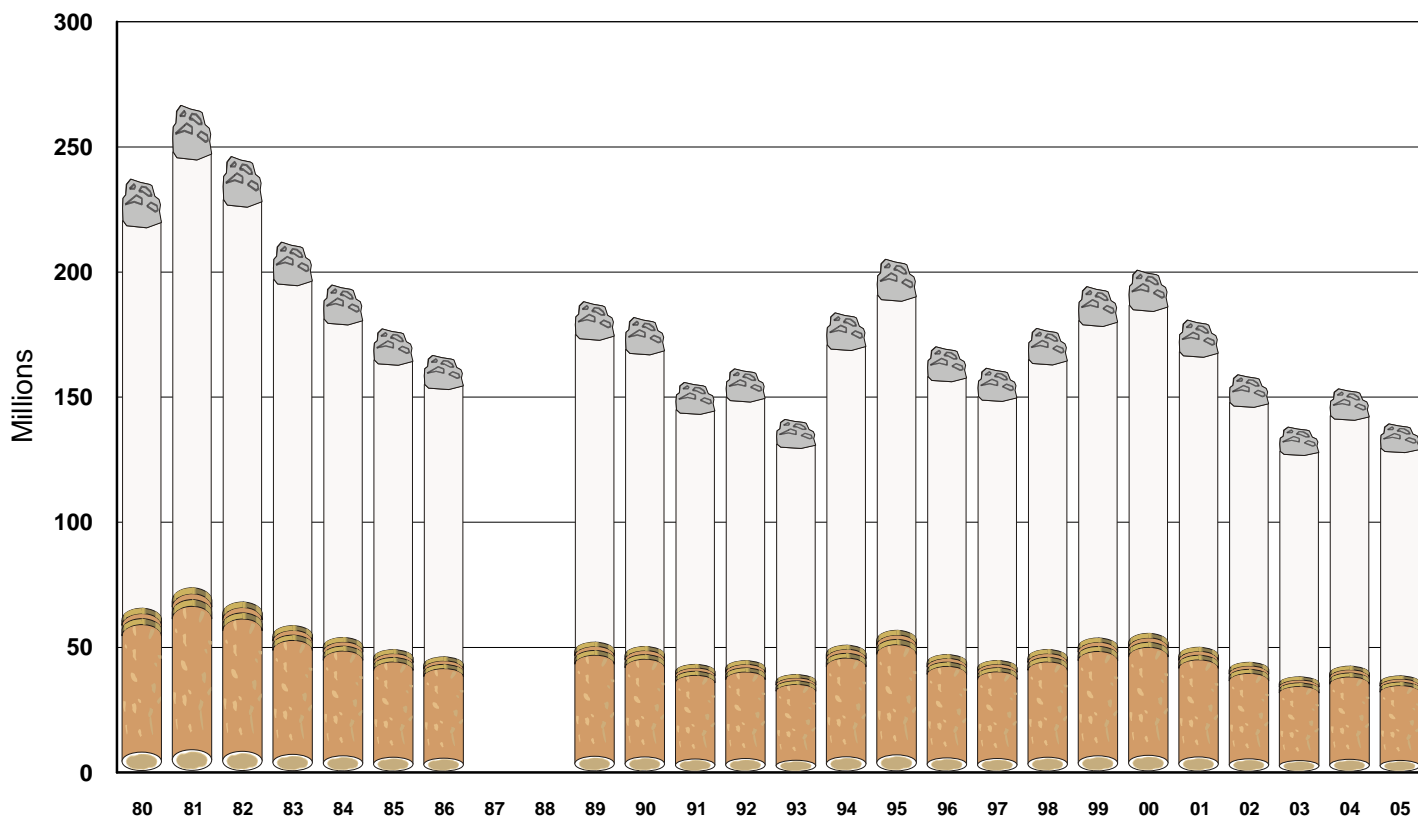
1980	0
1981	0
1982	0
1983	0
1984	800,000
1985	400,000
1986	100,000
1987*	0
1988*	0
1989	100,000
1990	2,000,000
1991	100,000
1992	900,000
1993	0
1994	600,000
1995	-400,000
1996	0
1997	0
1998	57,000
1999	322,000
2000	345,800
2001	310,600
2002	316,800
2003	264,600
2004	472,400
2005	1,023,200

*Provincial sales not available for 1987 and 1988



Tobacco Control Programme
Office of Research, Surveillance and Evaluation
June, 2006

Imported & Domestic Cigarette Sales 1980 - 2005 Prince Edward Island



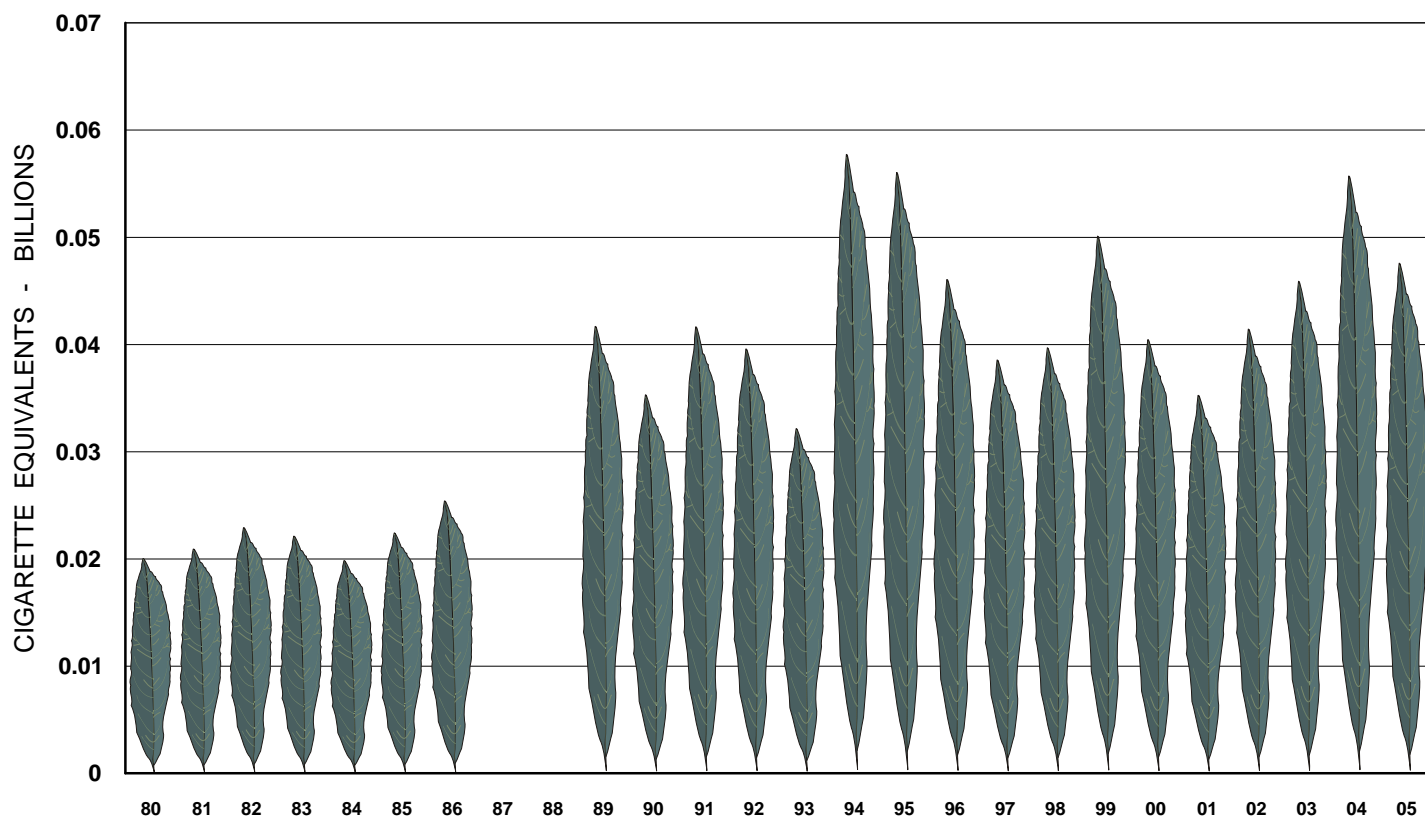
Year	Units of Cigarettes
1980	237,700,000
1981	267,200,000
1982	246,700,000
1983	212,400,000
1984	195,200,000
1985	177,600,000
1986	167,100,000
1987*	
1988*	
1989	188,539,000
1990	182,169,000
1991	156,183,000
1992	161,646,000
1993	141,410,400
1994	184,061,400
1995	205,589,600
1996	170,478,000
1997	161,910,000
1998	177,843,400
1999	194,661,000
2000	201,191,125
2001	181,209,550
2002	159,329,965
2003	138,313,620
2004	153,628,055
2005	139,573,795

*Provincial sales not available for 1987 and 1988



Domestic Fine-Cut Sales 1980 - 2005

Prince Edward Island



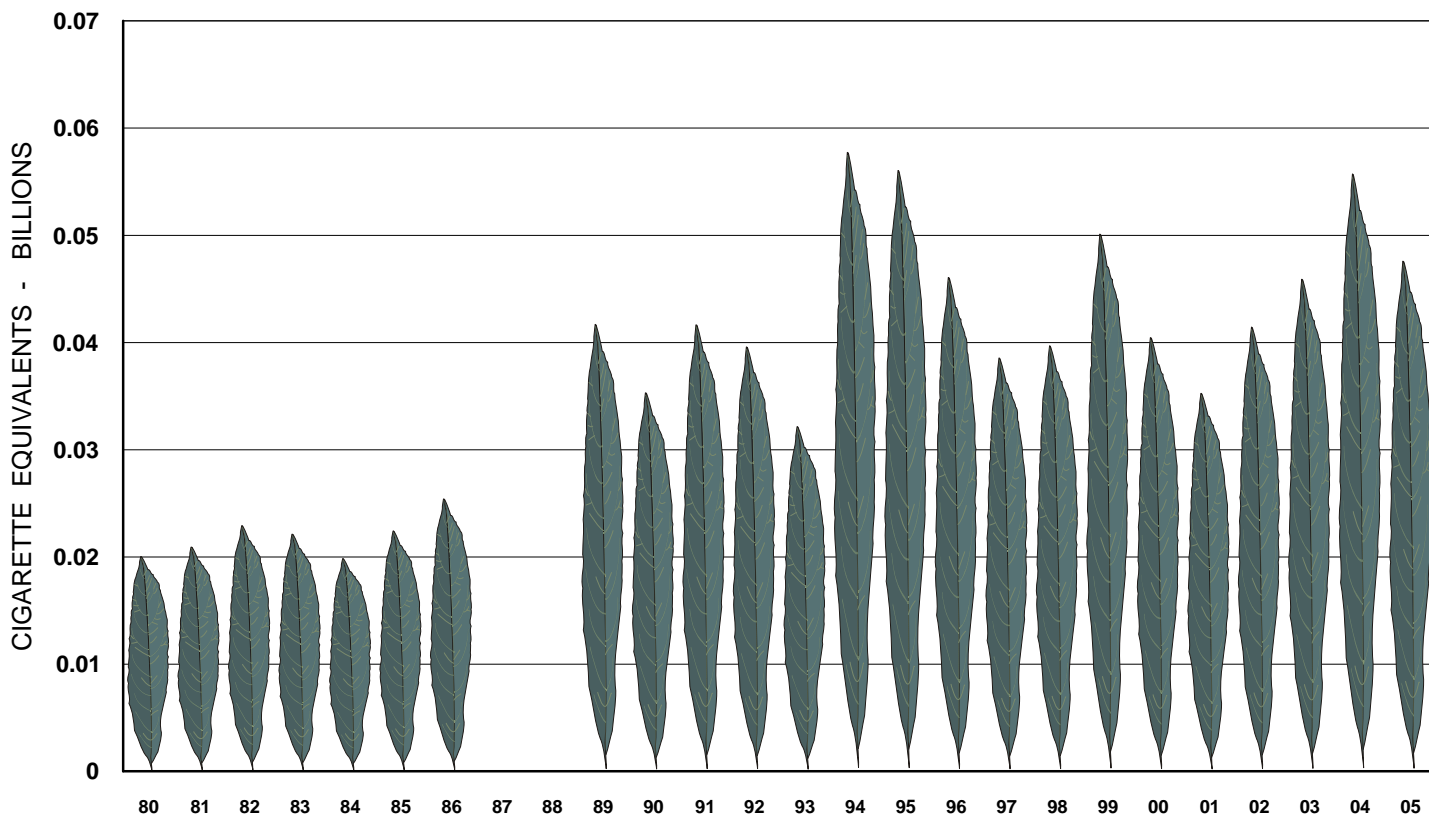
Year	Units of Cigarette Equivalents
1980	20,100,000
1981	21,000,000
1982	23,000,000
1983	22,200,000
1984	19,900,000
1985	22,500,000
1986	25,500,000
1987*	
1988*	
1989	41,873,000
1990	35,442,000
1991	41,821,000
1992	39,745,000
1993	32,287,000
1994	57,974,000
1995	56,277,000
1996	46,239,000
1997	38,714,000
1998	39,857,000
1999	50,303,000
2000	40,616,000
2001	35,399,000
2002	41,606,000
2003	46,083,000
2004	55,943,000
2005	47,780,000

*Provincial Sales not available for 1987 and 1988



Domestic & Imported Fine-Cut Sales 1980 - 2005

Prince Edward Island



Year Units of Cigarette Equivalents

1980	20,100,000
1981	21,000,000
1982	23,000,000
1983	22,200,000
1984	19,900,000
1985	22,500,000
1986	25,500,000
1987*	
1988*	
1989	41,873,000
1990	35,442,000
1991	41,825,000
1992	39,745,000
1993	32,287,000
1994	57,974,000
1995	56,277,000
1996	46,239,000
1997	38,714,000
1998	39,857,000
1999	50,303,000
2000	40,616,000
2001	35,399,000
2002	41,606,000
2003	46,083,000
2004	55,943,000
2005	47,780,000

*Provincial Sales not available for 1987 and 1988



Tobacco Control Programme
Office of Research, Surveillance and Evaluation
June, 2006