

**Canadian Federally Incarcerated Adult Women Profiles  
Trends from 1981 to 1998**

Colleen Anne Dell  
Roberta Lynn Sinclair  
Roger Boe

Research Branch  
Correctional Service of Canada

**February, 2001**

## EXECUTIVE SUMMARY

This report summarises and presents profiles of the Canadian federally incarcerated adult women population over an eighteen-year period, from 1981 to 1998. The report follows an earlier report<sup>1</sup> that was written in response to a special request from the Heads of Corrections.

The information used to compile this report is derived from three sources: the *Offender Population Profile Reports* (OPPR, 1981-1991) which is a multi-volume report compiled quarterly, and the *Offender Population Profile System* (OPPS, 1992-1993) and the *Offender Management System* (OMS, 1994-1998) which are electronic databases. All sources represent official Correctional Service of Canada offender population statistics.

The March 31 federal population profiles present information directed toward six offender characteristics and six offence characteristics. Where appropriate, the actual numbers are presented but in general trends are analyzed in terms of changing proportions (as a percentage of the total incarcerated federal women population). Highlighted findings are:

### **1. Growth of the Federally Incarcerated Adult Women Population**

- The federally incarcerated adult women population increased by approximately 62% from 1981 to 1998 (from 200 to 321). However, the incarceration rate per 100,000 adult women edged up only slightly (from 2.2 in 1981 to 2.7 in 1998).

---

<sup>1</sup> Adult Women Offenders in Canada: Recent Trends, C.A. Dell and R. Boe, CSC Research Branch, Research Brief B-21, 1998.

## **2. Age**

- The age of the federal adult women population increased during the years 1981 to 1998. The proportion of women under the age of 35 decreased from 70% in 1981 to 49% in 1998 and the proportion of women over 35 increased from 31% in 1981 to 51% in 1998.

## **3. Race**

- The racial diversity of the federal women offender population changed between 1981 and 1998. Caucasian women decreased from 78% of the incarcerated population in the early 1980s to 60% in 1998. Black representation increased from 1% to 9% over the 18-year period. Overall, Aboriginal representation did not change from 1981 to 1998 (18%).

## **4. Marital Status**

- The marital status of federally incarcerated women remained relatively the same from 1981 to 1998. Over the 18-year period, approximately 3 out of 8 women were single.

## **5. Citizenship**

- The citizenship of federal women remained relatively the same from 1981 to 1993. However, over the 13-year period, Canadian citizenship did decrease from 92% to 87% while other citizenship increased from 2% to 6%.

## **6. Language**

- The majority of federal women reported English as their primary language spoken, which increased from 76% in 1981 to 83% in 1998. The proportion of women who spoke both English and French decreased during this 18-year period, from 14% in 1981 to 4% in 1998. The proportion who reported French as their primary language increased slightly from 9% in 1981 to 13% in 1998.

**7. *Region of Residence***

- There was an increase in the proportion of federal women who were residents of the Ontario region (from 21% in 1981 to 28% in 1993) and a decrease in women who were residents of the Pacific region (from 20% in 1981 to 12% in 1993). The proportion of women from all other regions and outside Canada remained relatively the same.

**8. *Type of Admission***

- A majority (87%) of the federally incarcerated adult women admitted in 1981 were by a Warrant of Committal directly from the court. After 1991, this proportion decreased gradually to around 81% by 1998. Since 1991, this decrease was offset by small increases in the proportion of Parole Revocations (from around 3% annually to about 12% by 1998) and Statutory Release (previously termed Mandatory Supervision) (from around 2% to about 7% in 1998).

**9. *Most Serious Offence***

- Between 1981 and 1991 the major offence for which women were federally incarcerated was a crime of violence. It is important to contextualize this finding with the fact that this research focuses solely upon federal incarcerations (i.e., sentences of 2 years and over). The proportion of women incarcerated for a property crime slightly decreased (5%) and drug offences slightly increased (5%).

**10. *Aggregate Sentence***

- There was an increase in the proportion of women receiving federal sentences of 2 to 5 years between 1981 and 1998 (48% to 59%). This was offset by a decrease in the proportion of women serving sentences between 5 and 10 years (down from 27% in 1981 to 12% by 1998). During this same period, the proportion of women serving a life sentence increased from 16% to 21%.

**11. Time Served Since Last Admission**

- The proportion of federally incarcerated adult women who had served 12 months or less since their last federal penitentiary admission increased from 38% in 1981 to 56% by 1998. Women serving 1-2 years decreased from 23% to 17%, 2-5 years decreased from 27% to 19%, and 5+ years decreased from 12% to 8% in the same period.

**12. Number of Previous Commitments**

- In 1998 approximately 82% of women offenders were serving their first federal term; this proportion was not significantly higher than in the early 1980s.

**13. Region of Sentence**

- There was some change in the regional numbers in which federal women were sentenced between 1987 and 1991. The proportion sentenced in the Ontario and Quebec Regions increased (by 4 percentage points each) while the proportions sentenced in the Atlantic and Pacific Regions decreased (by 3 and 6 percentage points respectively). The Prairie Region, overall, remained stable.

## TABLE OF CONTENTS

<b>EXECUTIVE SUMMARY .....</b>	<b>ii</b>
<b>TABLE OF CONTENTS.....</b>	<b>vi</b>
<b>LIST OF TABLES.....</b>	<b>vii</b>
<b>LIST OF CHARTS.....</b>	<b>viii</b>
<b>INTRODUCTION .....</b>	<b>1</b>
<b>HISTORICAL TRENDS.....</b>	<b>3</b>
1. Growth of the Federally Incarcerated Adult Women Population 1981-1998 .....	4
2. Age, 1981-1998.....	5
3. Race, 1981-1998.....	7
4. Marital Status, 1981-1998 .....	8
5. Citizenship, 1981-1993.....	10
6. Language, 1981-1998 .....	11
7. Region of Residence, 1981-1993 .....	13
8. Type of Admission, 1981-1998.....	14
9. Most Serious Offence, 1981-1991 .....	17
10. Aggregate Sentence, 1981-1991 & 1994-1998.....	18
11. Time Served since Last Admission, 1981-1991 & 1994-1998 .....	20
12. Number of Previous Commitments, 1981-1998 .....	22
13. Region of Sentence, 1987-1991.....	24
<b>APPENDIX A: METHODOLOGY.....</b>	<b>26</b>
<b>APPENDIX B: MAJOR OFFENCE CATEGORY DEFINITIONS .....</b>	<b>33</b>
<b>APPENDIX C: TABLES.....</b>	<b>37</b>
<b>APPENDIX D: RAW NUMBERS.....</b>	<b>57</b>

## LIST OF TABLES

Table 1A:	Total Federally Incarcerated Adult Women's Population & Incarceration Rate Per 100,000 Women Population, 1981-1998, Canada .....	38
Table 1B:	Total Adult Women's (Age 18+) Population, Canada.....	39
Table 2:	Federally Incarcerated Women's Inmate Age Profile, 1981-1998 .....	42
Table 3:	Federally Incarcerated Women's Inmate Race Profile, 1981-1998 .....	43
Table 4:	Federally Incarcerated Women's Inmate Marital Status Profile, 1981-1998 .....	45
Table 5:	Federally Incarcerated Women's Inmate Citizenship Profile, 1981-1993 .....	47
Table 6:	Federally Incarcerated Women's Language Spoken Profile, 1981-1998 .....	48
Table 7:	Federally Incarcerated Women's Region of Residence Profile, 1981-1993 .....	49
Table 8:	Federally Incarcerated Women's Type of Admission Profile, 1981-1998 .....	50
Table 9:	Federally Incarcerated Women's Inmate Most Serious Offence, 1981-1991 .....	51
Table 10:	Federally Incarcerated Women's Aggregate Sentence Profile, 1981-1991 & 1994-1998 .....	52
Table 11:	Federally Incarcerated Women's Time Served Since Last Admission Profile, 1981-1991 & 1994-1998 .....	54
Table 12:	Federally Incarcerated Women's Number of Previous Commitments Profile, 1981-1998 .....	55
Table 13:	Federally Incarcerated Women's Region of Sentence Profile, 1987-1991 .....	56

## LIST OF CHARTS

Chart 1A:	Total Federally Incarcerated Adult Women Population, 1981-1998, Canada	4
Chart 1B:	Incarceration Rate Per 100,000 Adult Women Population, .....	5
Chart 2:	Age Per Total Federally Incarcerated Adult Women Population, 1981-1998.....	6
Chart 3:	Race Per Total Federally Incarcerated Women Population, 1981-1998 .....	8
Chart 4:	Marital Status Per Total Federally Incarcerated Adult Women Population, 1981-1998.....	9
Chart 5:	Citizenship Per Total Federally Incarcerated Adult Women Population, 1981-1993.....	10
Chart 6:	Language Per Total Federally Incarcerated Adult Women Population, 1981-1998	12
Chart 7:	Region of Residence Per Total Federally Incarcerated Adult Women Population, 1981-1993 .....	14
Chart 8:	Type of Admission Per Total Federally Incarcerated Adult Women Population, 1981-1998 .....	16
Chart 9:	Most Serious Offence Per Total Federally Incarcerated Adult Women Population, 1981-1991 .....	18
Chart 10:	Aggregate Sentence Per Total Federally Incarcerated Adult Women Population, 1981-1991 & 1994-1998 .....	20
Chart 11:	Time Served Since Last Admission Per Total Federally Incarcerated Adult Women Population, 1981-1991 & 1994-1998.....	22
Chart 12:	Number of Previous Federal Commitments Per Total Federally Incarcerated Women F	
Chart 13:	Region of Sentence Per Total Federally Incarcerated Adult Women Population, 1987-1991 .....	25



## INTRODUCTION

In 1938, the Archambault Commission recommended that the prison for women in Kingston, Ontario be closed. This recommendation came only four years after the opening of this facility in 1934<sup>2</sup>. Following the Archambault Commission, the Kingston prison for women has been the subject of a series of Royal Commissions, Task Forces and Inquiries investigating the state of women corrections in Canada.

In Canada, Royal Commissions, Inquiries, and Task Forces have been conducted on women corrections in the 20<sup>th</sup> century. However, it has only been within the past decade that the major change has transpired. The 1990 Report of the Task Force on Federally Sentenced Women<sup>3</sup> initiated restructuring the federal system from one central correctional institution, the Prison for Women in Kingston, to five regional facilities<sup>4</sup>, with the first opened in Edmonton, Alberta in 1995. The trends reviewed in this report may be of significance to the future of the regional women institutions, and range from appropriate programming and accommodation to Correctional Service of Canada (CSC) policy and staffing requirements.

Limited research has addressed the historical profiling of the Canadian federally incarcerated adult women population in Canada. Apart from observations made by individuals working within the corrections field, very little information has been consistently documented on women offender this profiling over time.

---

<sup>2</sup> N. Stableforth, "Effective Corrections for Women Offenders," *Forum on Corrections Research*, 11, 3 (1999): 3-5.

<sup>3</sup> Source: *Creating Choices, Report of the Task Force on Federally Sentenced Women*. (1990). Ottawa, ON: Ministry of the Solicitor General.

<sup>4</sup> The five regional institutions and their respective geographic locations are: Burnaby Correctional Centre in Burnaby, British Columbia (Pacific); Okimaw Ohci Healing Lodge in Maple Creek, Saskatchewan (Prairie); Grand Valley in Kitchener, Ontario (Ontario); Joliette in Joliette, Quebec (Quebec); Edmonton Institution in Edmonton, Alberta; and Nova Institution in Turo, Nova Scotia (Atlantic). Note that on September 3, 1999, Solicitor General Lawrence MacAulay announced that the women's units currently located in men's institutions and the Prison for Women in Kingston are scheduled for closure in the next two years. The 'high needs' women offenders that are currently imprisoned in these locations will

The purpose of this investigation is to examine the profile of federally incarcerated women over an 18 year period, 1981-1998. Six offender specific and six offence specific characteristics are examined. Offender characteristics refer to an individual's identifying factors (i.e., age, citizenship) and offence characteristics pertain to elements related to an individual's criminal offence(s) (i.e., type of admission, aggregate sentence).

The information is presented as: (1) charts in the body of the report that present the information as a proportional trend, and (2) tables at the end of the report (see Appendix C) which present the raw numbers and percentage distributions. This provides the reader with information in two separate areas. The first source allows for a comparison of increases/decreases of the actual numbers with the total population for a proportional understanding. The second provides an accurate portrayal of the federally incarcerated women population.

---

be transferred to specially re-designed regional women's facilities. The Prison for Women was closed on July 2000.

## HISTORICAL TRENDS

Three information sources were used to compile this review: *CSC's Offender Population Profile Reports* (1981-1991); the *Offender Population Profile System* (1992-1993); and the *Offender Management System* (1994-1998).<sup>5</sup>

1. The first source is quarterly published information in the *Offender Population Profile Reports* (OPPR), from 1981 to 1991, by the Management Information System Division, Correctional Service Canada. The OPPRs are snapshots of inmates on register at an institution on specific dates of each year. The end of the fiscal year, March 31<sup>st</sup>, is the data publication date normally used in this report.<sup>6</sup> Inmates unlawfully at large from an institution but who remain on the register of the institution are counted in the profile.
2. The second source of data is the *Offender Population Profile System* (OPPS), which is the electronic system developed in 1990 to compile offender population profiles similar to the earlier paper reports. This source was used for 1992 and 1993, and accounted for both federal inmates who may be incarcerated in provincial institutions and provincial inmates incarcerated in federal institutions. The end of fiscal year (March 31<sup>st</sup>) date was used.
3. The third data source is the *Offender Management System* (OMS). OMS is CSC's newest offender information database and offender profile statistics are compiled by extracting the appropriate information for the years 1994 to 1998. Once again, federal inmates who may be incarcerated in provincial institutions and provincial inmates incarcerated in federal institutions, under the federal/provincial transfer agreement, are accounted for. The end of fiscal year (March 31<sup>st</sup>) date was used.

---

<sup>5</sup> Information on the methodology employed in this report is provided in Appendix A.

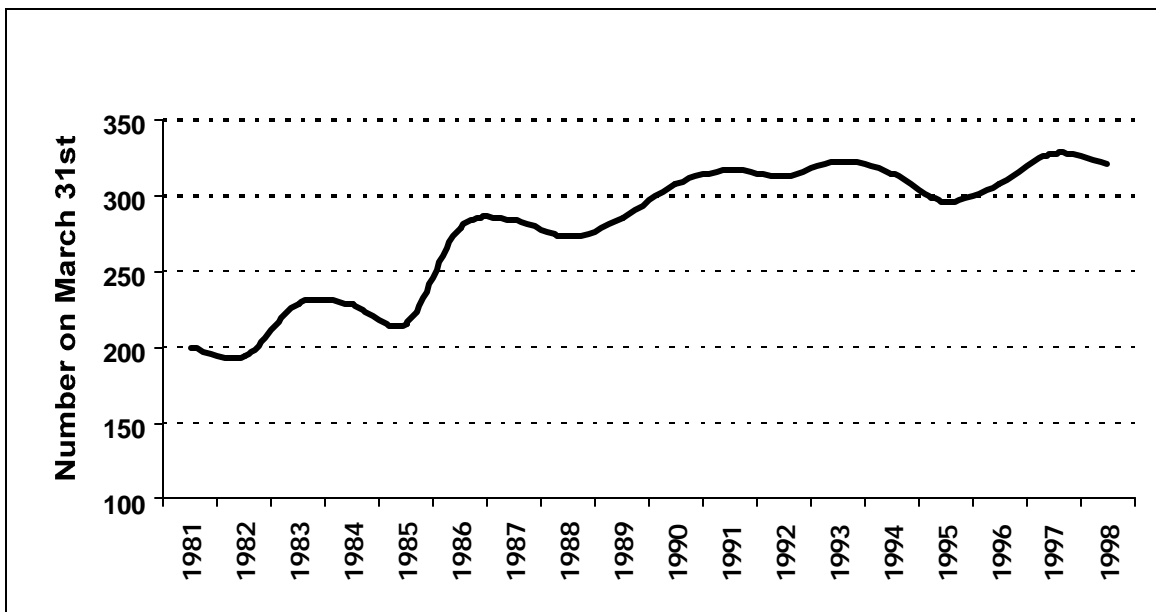
<sup>6</sup> This is true for every year except 1981, for which September 30 is used because it is the first report of the series.

The information presented in this report is provided as both the actual numbers and as a percentage of the total federally incarcerated women population. Each is explained, using major offence as the example. The *actual number* indicates characteristics of the total number of women incarcerated in the federal system. For example, 30 women were incarcerated in Canada in 1981 for a property crime. The *percentage of total federally incarcerated women* is the percentage of federal women with a specific characteristic as a proportion of the total incarcerated women population. For example, 15% of the federal women population in 1981 were incarcerated for a property crime.

### 1. Growth of the Federally Incarcerated Adult Women Population 1981-1998

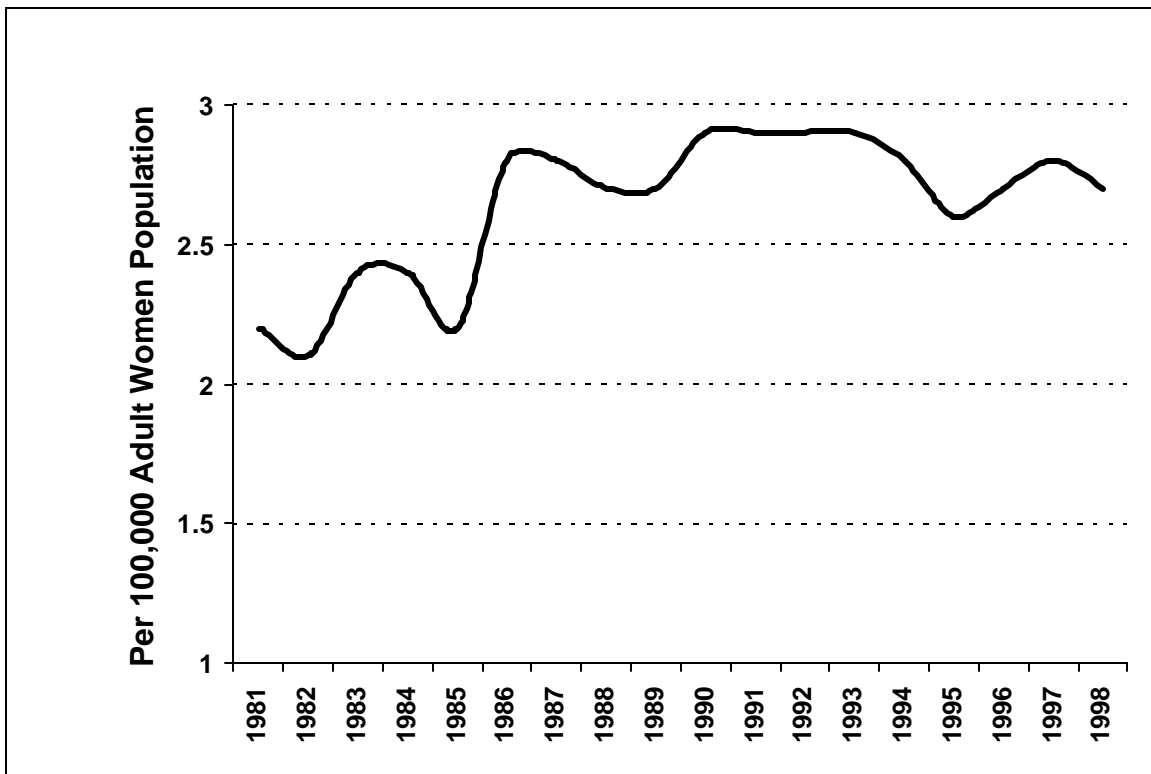
There was an increase in the total number of women incarcerated in a federal institution in Canada of just over 50%, from 1981 (200) to 1998 (321). There were approximately 1.5 times as many women incarcerated in 1998 as in 1981.

**Chart 1A: Total Federally Incarcerated Adult Women Population, 1981-1998, Canada**



However, the increase in the federal women population did not significantly outstrip the growth of the population of women in Canada during the same period. The incarceration rate per 100,000 women in Canada increased from 2.2 (1981) to 2.7 (1998). The majority of this increase occurred between 1981 and 1986. Since then the proportion has fluctuated from year to year with no discernible trend.

**Chart 1B: Incarceration Rate Per 100,000 Adult Women Population, 1981-1998, Canada**



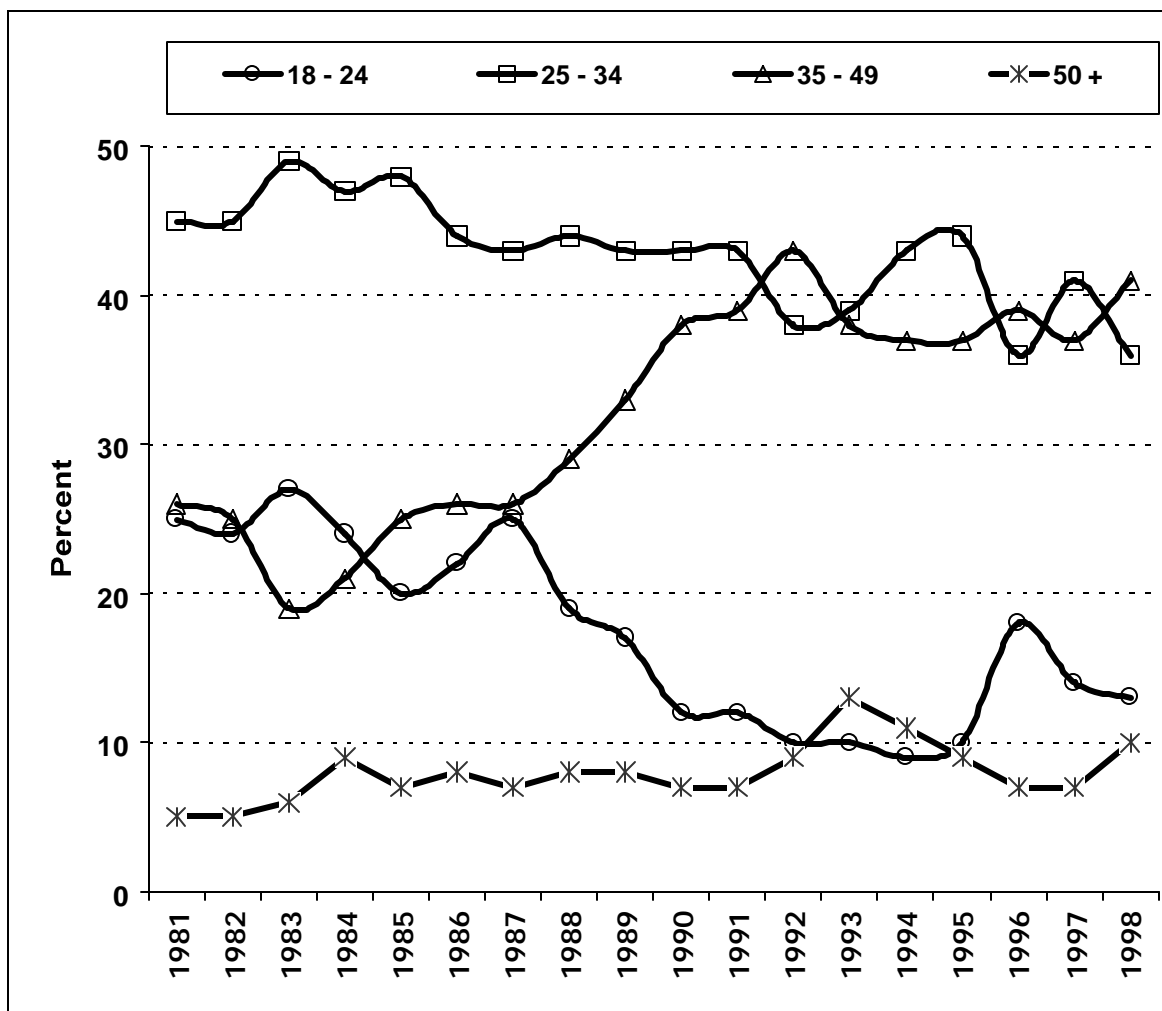
## 2. Age, 1981-1998

### *Percentage Distribution by Age*

- There was zero growth rate in the under 18 years of age category, with the exception of 1982 (1% increase).

- The 18 to 24 age category decreased from 25% in 1981 to 13% in 1998.
- The 25 to 34 category decreased overall from 1981 (45%) to 1998 (36%). There was great fluctuation between the years, specifically from 1995 to 1998.
- The 35 to 49 age group increased overall from 1981 (26%) to 1998 (41%). From 1981 (26%) there was an overall increase to 1992 (43%), decreasing slowly thereafter to 1997 (37%). There was a slight increase in 1998 (41%).
- The 50 plus category increased from 1981 (5%) to 1993 (13%), decreased to 1997 (7%), and increased slightly in 1998 (10%).

**Chart 2: Age Per Total Federally Incarcerated Adult Women Population, 1981-1998**

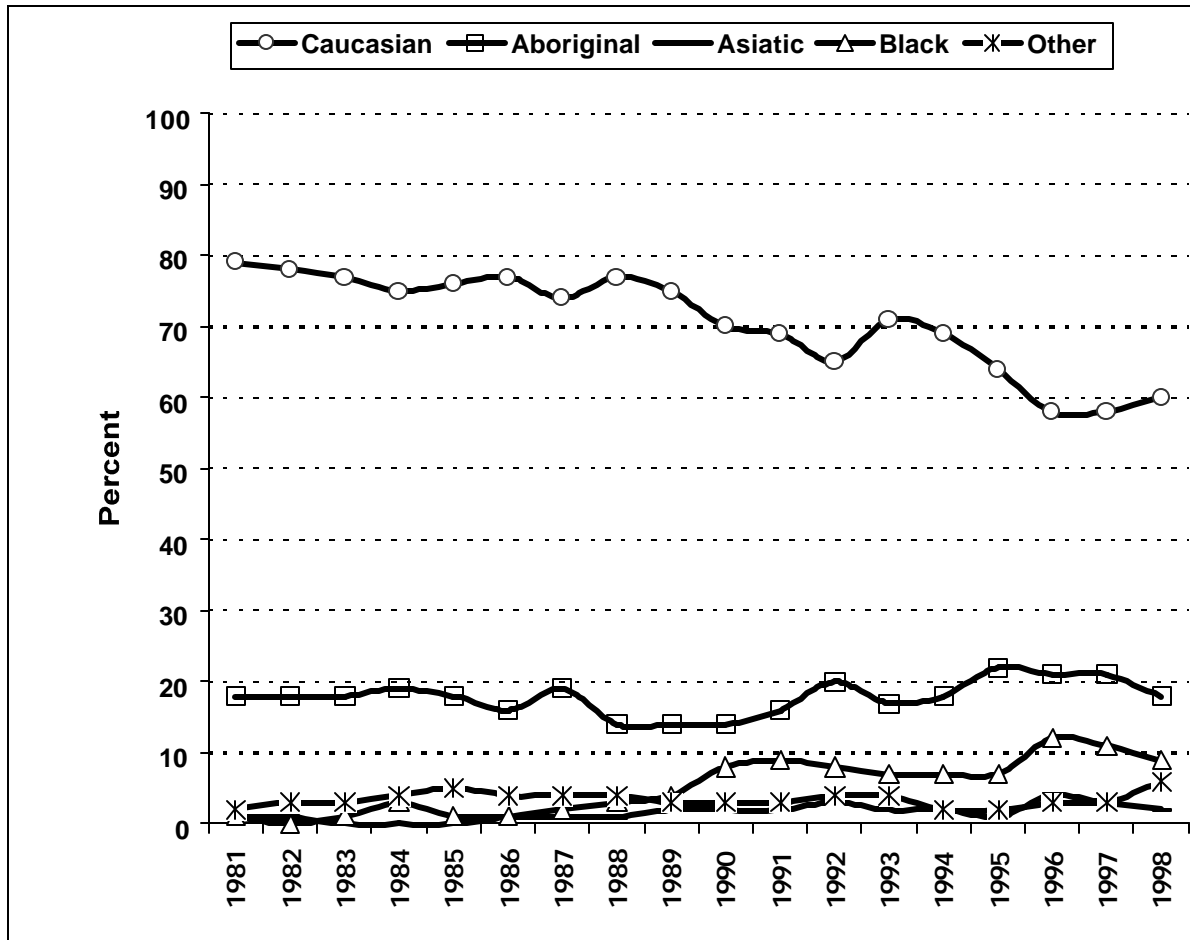


### 3. Race, 1981-1998

#### *Percentage Distribution by Race*

- Caucasian consistently decreased from 1981 (78%) to 1992 (65%). This was followed by an increase in 1993 (71%), decreasing steadily again until 1997 (58%), and slightly increasing in 1998 (60%).
- Aboriginal remained stable when comparing the years 1981 and 1998 (18% for both). There was, however, a slight increase and notable fluctuation between 1986 (16%) and 1992 (20%).
- Asiatic increased overall from 1981 (1%) to 1992 (3%). This was followed by a decrease to 1995 (1%) and fluctuation thereafter, rating at 2% in 1998.
- There was an increase in Black from 1981 (1%) to 1989 (4%). There was a sharp increase in 1990 (8%), remaining relatively stable to 1995 (7%). This was followed by a substantial increase in 1996 to 12% and a slight decrease thereafter to 9% in 1998.
- There was an increase in Other from 1981 (2%) to 1993 (4%). This decreased in 1994 (2%), and was followed by an increase to 1998 (6%).

**Chart 3: Race Per Total Federally Incarcerated Women Population, 1981-1998**



**4. Marital Status, 1981-1998**

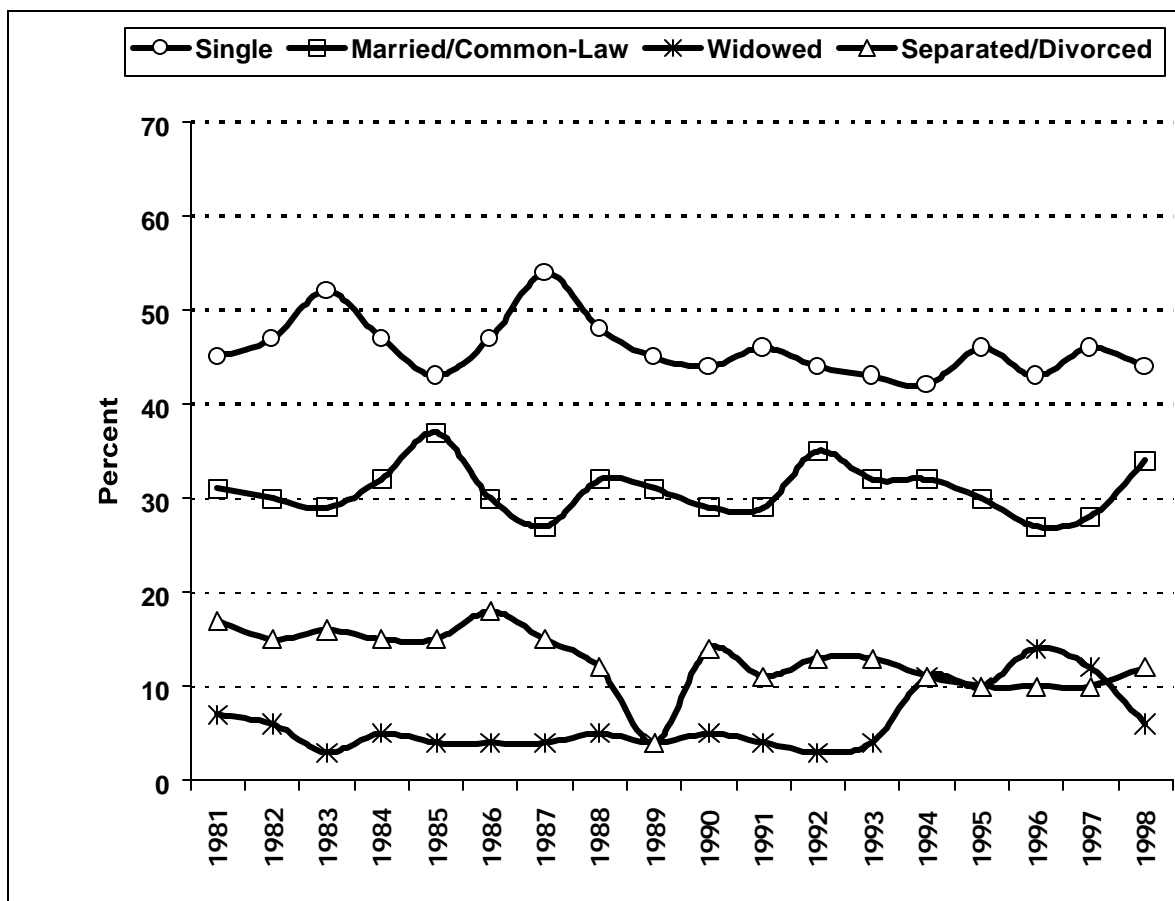
***Percentage Distribution by Marital Status***

- There was a very slight decrease in single from 1981 (45%) to 1998 (44%). However, there was fluctuation throughout with the highest point in 1987 (54%) and the lowest point in 1994 (42%).
- Married/Common-Law slightly increased from 31% in 1981 to 35% in 1992, decreasing to 27% in 1996, and increasing to 34% in 1998.



- Widowed fluctuated between 7% and 3% between 1981-1993 (averaging 5%), followed by a sharp increase in 1994 (11%) to 1996 (14%) and decreasing to 1998 (6%).
- From 1981 to 1998, Separated/Divorced decreased (17% to 12%), with the highest point in 1986 (18%) and the lowest plateau from 1995 to 1997 (10%).

**Chart 4: Marital Status Per Total Federally Incarcerated Adult Women Population, 1981-1998**

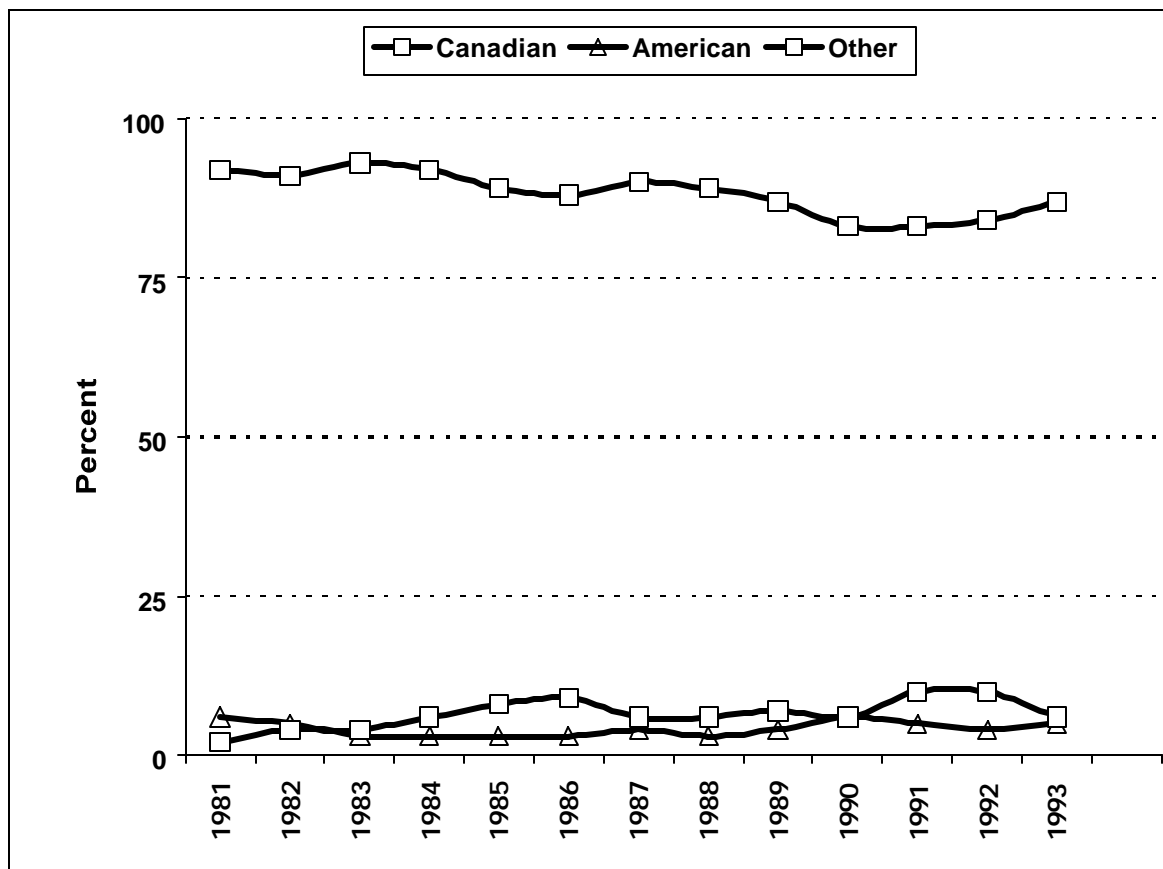


## 5. Citizenship, 1981-1993

### *Percentage Distribution by Citizenship*

- Canadian decreased steadily from 1981 (92%) to 1991(83%) followed by an increase to 1993 (87%). The lowest points were in 1990 and 1991 (both 83%).
- There was a slight decrease in American from 1981 (6%) to 1993 (5%), fluctuating throughout with the high in 1981 and 1990 (6%) and the low in 1983-1986 and 1988 (3%).
- There was an overall increase in Other from 1981 (2%) to 1991 and 1992 (both 10%), followed by a decrease in 1993 (6%).

**Chart 5: Citizenship Per Total Federally Incarcerated Adult Women Population, 1981-1993**

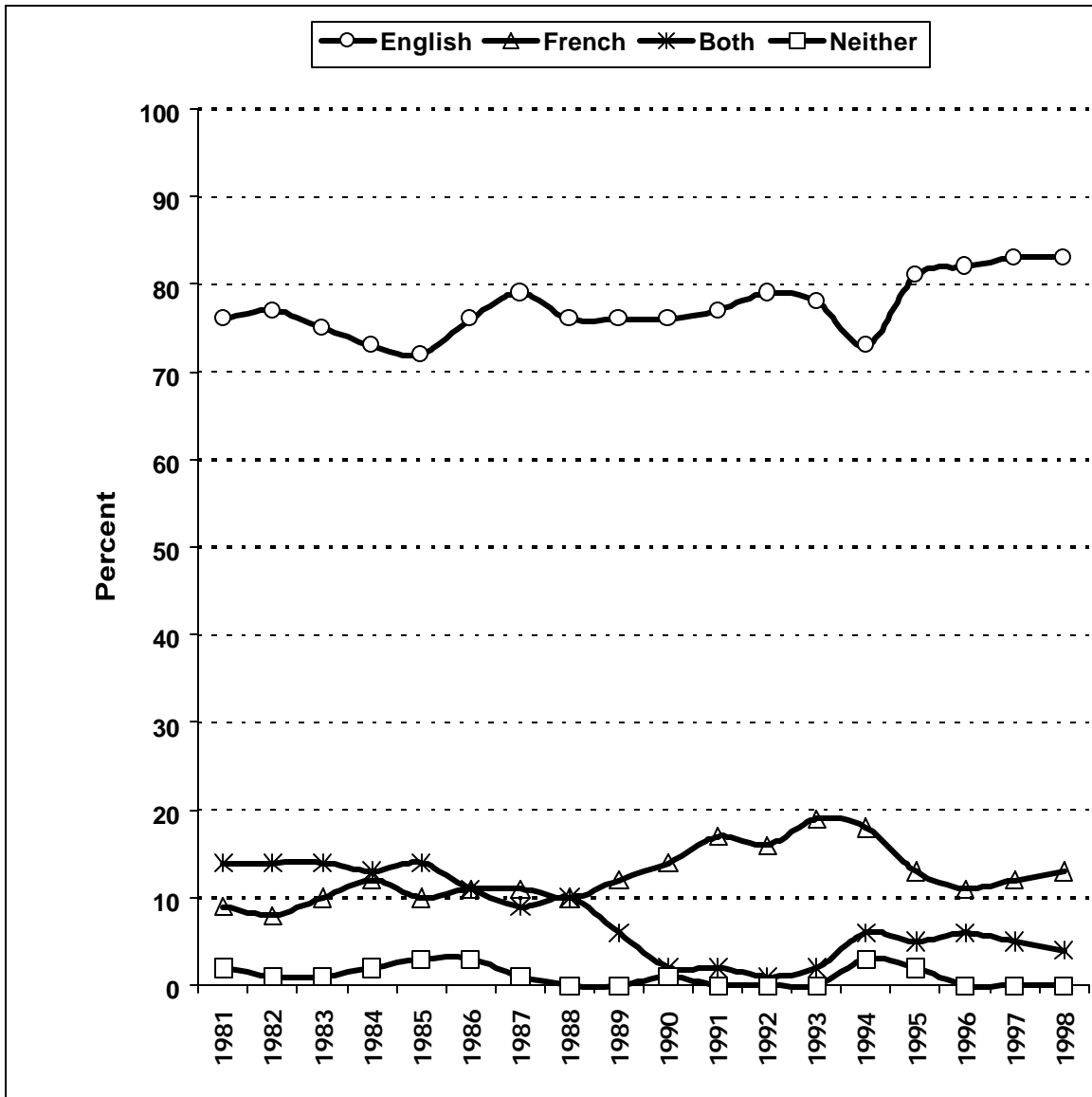


## 6. Language, 1981-1998

### *Percentage Distribution by Language Spoken*

- There was an increase from 76% in 1981 to 83% in 1998 in English. Note the decrease from 1982 (77%) to 1985 (72%).
- Overall, there was an increase in French from 9% in 1981 to 13% in 1998. Note the gradual overall decrease from 1993 (19%) to 1998 (13%).
- Both languages spoken, English and French, fluctuated, revealing an overall decrease from 1981 (14%) to 1998 (4%). Note the low proportion between 1990 and 1993 (average 2%).
- Neither French nor English spoken, (i.e., Hispanic), fluctuated slightly, with an overall decrease from 1981 (2%) to 1998 (0%).

**Chart 6: Language Per Total Federally Incarcerated Adult Women Population, 1981-1998**



## **7. Region of Residence, 1981-1993**

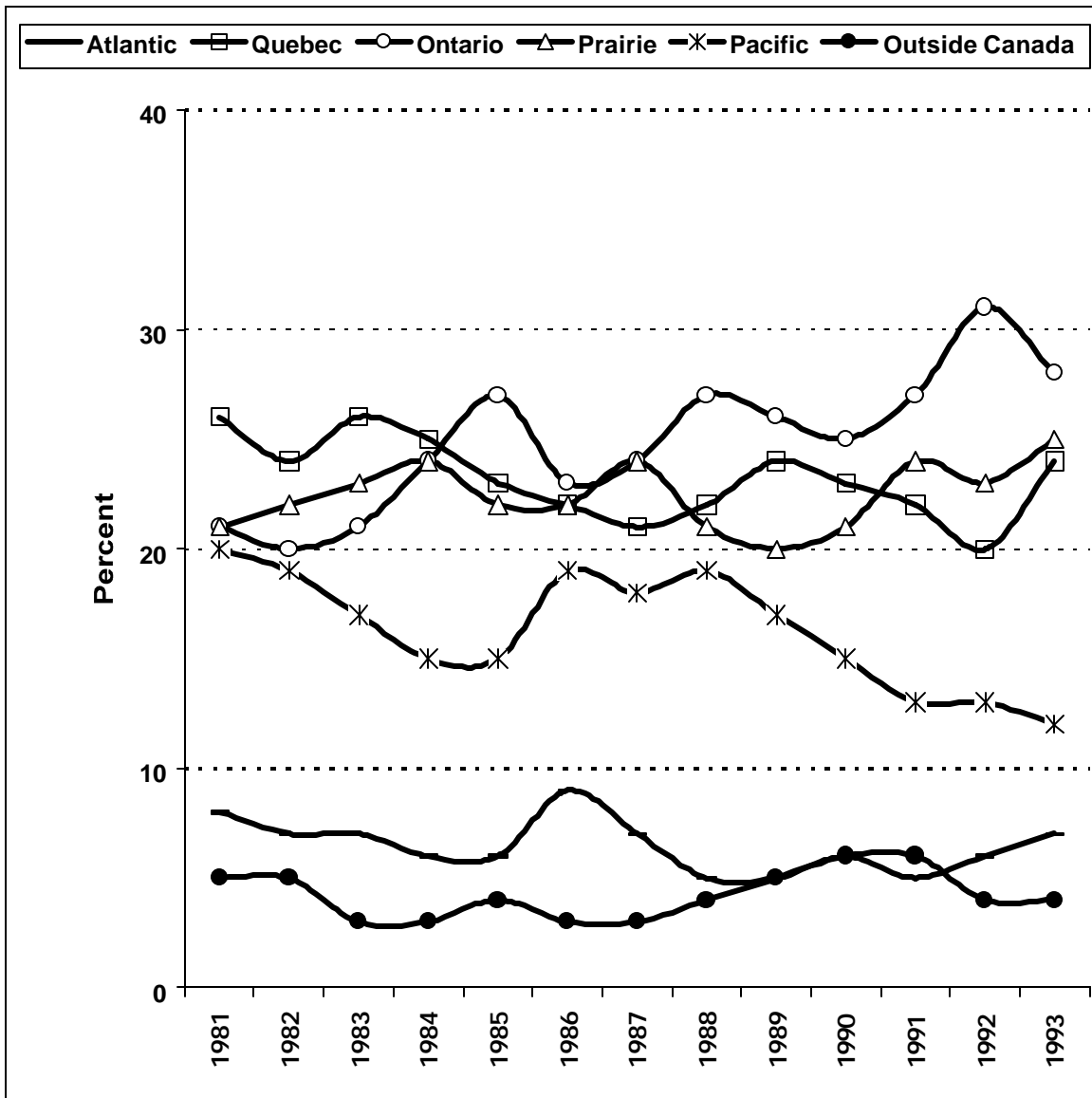
### ***Actual Number***

- There was a decrease in the Atlantic region from 1981 (15) to 1985 (13), a significant increase in 1986 (24), followed by a decrease to 1988 (14) and an increase to 1993 (22).
- There was an overall increase over the 13 year period in the Quebec region, 1981 (51%) and 1993 (76%).
- In the Ontario region there was a steady and dramatic increase from 1982 (38) to 1992 (97), followed by a decrease in 1993 (89).
- There was great fluctuation in the Prairie region from 1981 (42) to 1988 (56), followed by an increase to 1993 (80). The highest point was in 1993 (80) contrasted with the lowest points recorded in 1981 and 1982 (42).
- There was a decrease in the Pacific region from 1981 (39) to 1985 (33), followed by a significant increase in 1986 (52) that was stable to 1988, followed by a decrease to 1993 (38) (similar to the 1981 actual number of 39).
- Outside Canada had slight fluctuation, with an overall increase from 1981 (10) to 1993 (13). The numbers peaked in 1990 and 1991 (18).

### ***Percentage Distribution by Region of Residence (see Chart 7)***

- Overall, there was fluctuation in the Atlantic region with a slight decrease from 8% in 1981 to 7% in 1993.
- In the Quebec region, there was some fluctuation, with an overall decrease from 1981 (26%) to 1993 (24%).
- In the Ontario region, there was an increase from 21% in 1981 to 31% in 1992. There was a slight decrease in 1993 (28%).
- There was a slight increase in the Prairie region from 1981 (21%) to 1993 (25%), with slight fluctuation throughout.
- In the Pacific region, there was a percentage decrease from 1981 (20%) to 1993 (12%).
- Outside Canada residency had slight fluctuation, with an overall decrease from 1981 (5%) to 1993 (4%).

**Chart 7: Region of Residence Per Total Federally Incarcerated Adult Women Population, 1981-1993**



## 8. Type of Admission, 1981-1998

### *Actual Number*

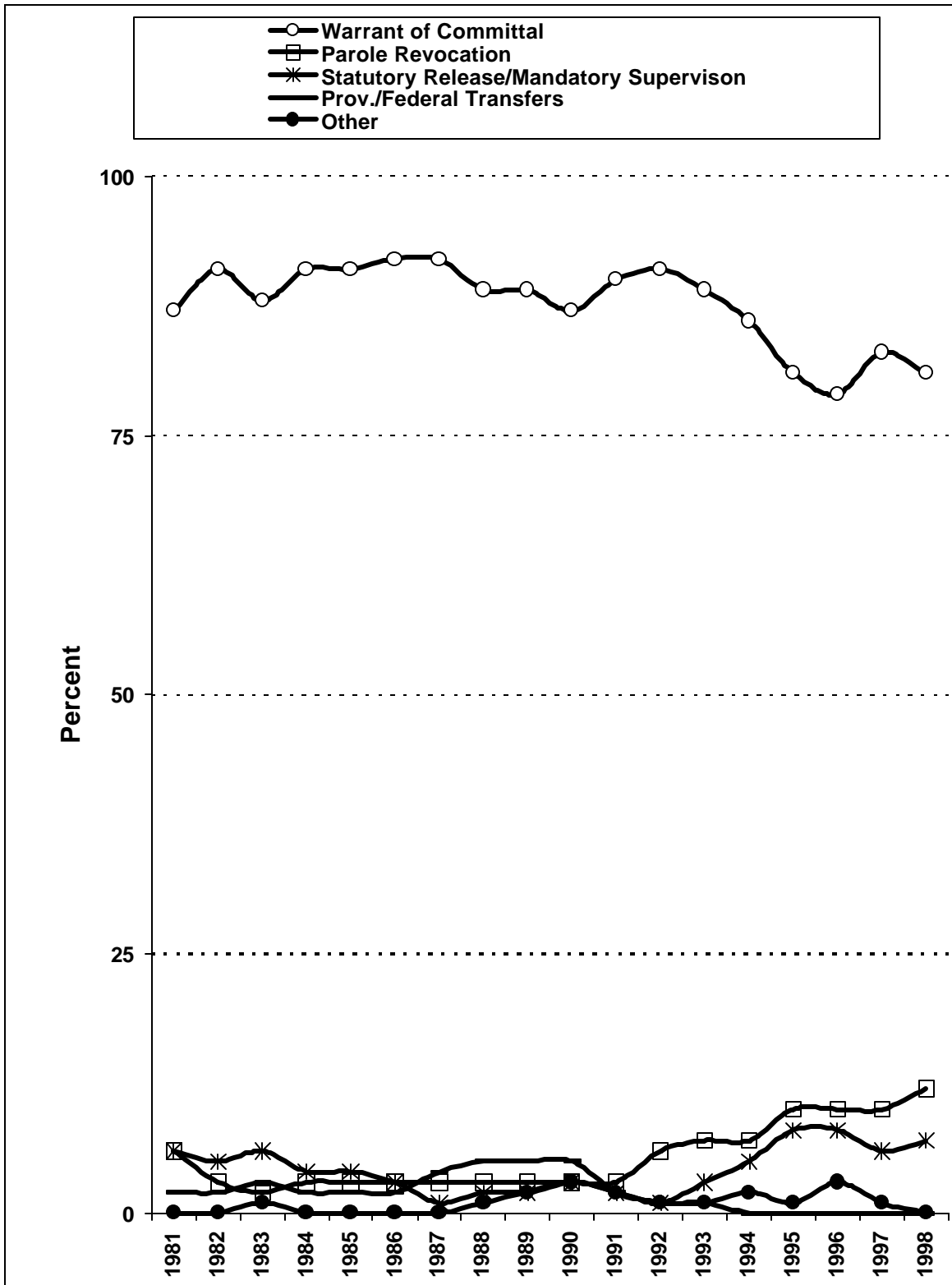
- There was an overall increase in Warrant of Committal from 1981 (173) to 1993 (287). This was followed by a decrease to 1995 (240), increasing thereafter to 1998 (261).
- Parole Revocation consistently increased from 1982 (5) to 1998 (37).

- Statutory Release (previously termed Mandatory Supervision) Revocation decreased between 1981 (12) and 1992 (4), followed by an increase in 1993 (8) through to 1996 (26%), and then levelling off at approximately 21 and 22 in 1997 and 1998 respectively.
- Provincial/Federal Transfers steadily increased from 1981 (4) to 1990 (14) and declined dramatically to 1994, and remained at an average of zero in subsequent years.
- The category of Other consistently fluctuated at a low number between 1981 and 1998, averaging at 3. The highest points were in 1990 and 1996 (8).

***Percentage Distribution by Type of Admission (see Chart 8)***

- Warrant of Committal fluctuated slightly (between 79% and 92%) and declined overall from 1981 (87%) to 1998 (81%).
- Parole Revocation remained steady from 1982 to 1991 (3%), followed by a sharp increase to 1998 (12%).
- Statutory Release fluctuated between 1981 (6%) and 1998 (7%), averaging at 5%.
- Provincial/Federal Transfers remained at a steady percentage from 1981 to 1986 (2%), increasing from 1987 to 1990 (average 5%), and then decreasing to zero from 1994 onward.
- The category of Other was zero from 1981 to 1987, overall increasing slightly from 1988 to 1997 before returning to zero in 1998.

**Chart 8: Type of Admission Per Total Federally Incarcerated Adult Women Population, 1981-1998**





## **9. Most Serious Offence, 1981-1991**

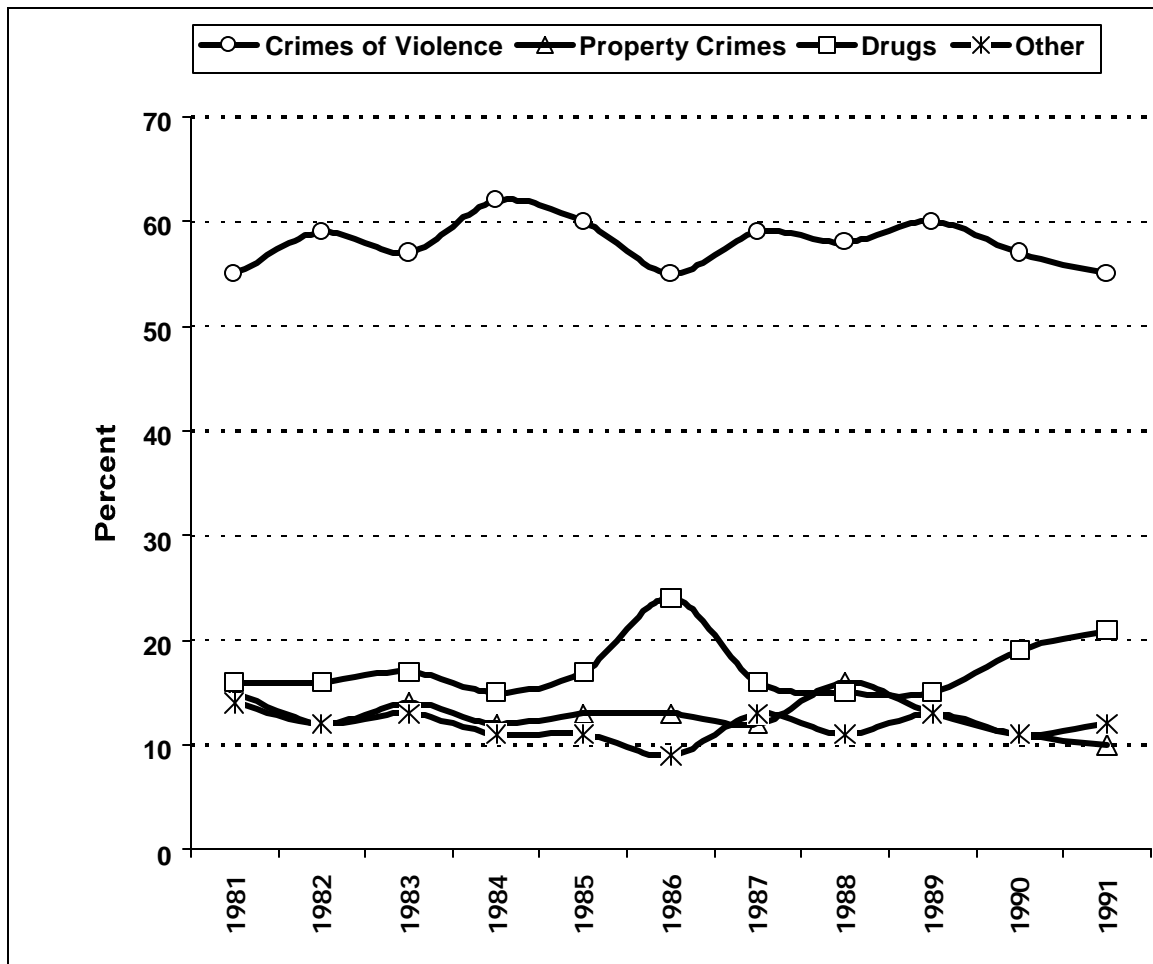
### ***Actual Number***

- There was an increase in Crimes of Violence from 1981 (110) to 1990 (176). In 1991 there was a shift downward (174) which was consistent with the literature that suggests overall crimes of violence in Canada have decreased since the early 1990s (Boe, 1997, R-59 Correctional Service Canada).
- Property Crimes fluctuated from 1981 (30) to 1984 (28) and remained stable to 1985. An increase began in 1986 (35) and continued to 1988 (44), followed by a decrease to 1991 (33), which is similar to 1981 (30).
- Drug Offences increased from 1981 (32) to 1985 (36), increasing sharply in 1986 (66), decreasing substantially in 1987 (45) through to 1989 (42), followed by a substantial increase again through to 1991 (67).
- Other Crimes increased, with slight fluctuation, from 1981 (28) to 1991 (37).

### ***Percentage Distribution by Major Offence (see Chart 9)***

- There was relative stability in Crimes of Violence from 1981 to 1991 (both 55%). The rate fluctuated moderately throughout the 11 year period, reaching its peak in 1984 (62%) and its low of 55% in 1981, 1986 and 1991.
- Property Crimes decreased from 1981 (15%) to 1991 (10%), noting slight fluctuation throughout, peaking in 1988 (16%).
- Overall, Drug Offences increased from 1981 (16%) to 1991 (21%). The peak in 1986 (24%) was followed by a decrease to 1989 (15%) and an increase to 1991 (21%).
- Other slightly decreased from 1981 (14%) to 1991 (12%). High points of 13% were in 1983, 1987 and 1989.

**Chart 9: Most Serious Offence Per Total Federally Incarcerated Adult Women Population, 1981-1991**



## 10. Aggregate Sentence, 1981-1991 & 1994-1998

### *Actual Number*

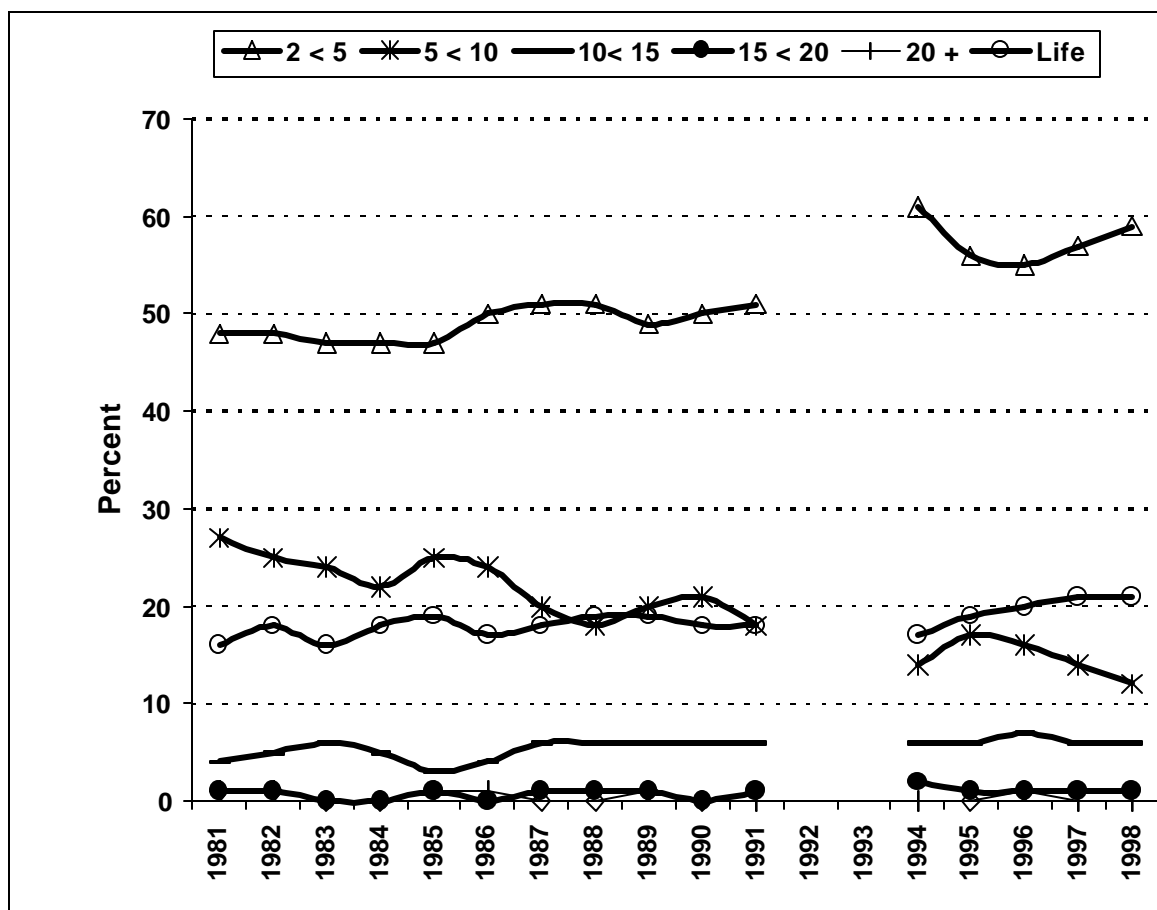
- There was an overall increase in Less Than 2 Years from 1981 (11) to 1991 (15), averaging at 12.
- Two to 5 Years notably increased from 1981 (95) to 1998 (190), with minor fluctuations throughout.
- Five to 10 Years decreased from 1981 (53) to 1998 (39). There was consistent fluctuation throughout the time period ranging from the low of 39 in 1998 to the high of 67 in 1986.

- There was an overall increase from 1981 (8) to 1998 (20) in the 10 to 15 Years category. There was an increase from 1981 (8) to 1983 (14), followed by a decrease to 1985 (6), followed by an increase to 1991 (20), remaining relatively stable through to 1998 (20).
- Acknowledging the extremely small number within the 15 to 20 Year category, there was relative stability between 1981 and 1990, at an average of 2. An increase in 1994 was followed by stability from 1995 to 1998 (4).
- There was relative stability in the 20 Plus category from 1981 to 1998, averaging 1.
- There was a gradual and significant increase in Life from 1981 (31) to 1998 (67). There was minor fluctuation, with the peak in 1997 (70) and the low in 1981 (31).

***Percentage Distribution by Aggregate Sentence (see Chart 10)***

- There was relative stability from 1981 (6%) to 1991 (5%) in Less Than 2 Years (Not shown on chart 10, due to insignificant percentage).
- There was a slight increase from 1981 (48%) to 1998 (59%) in the 2 to 5 Year category, with minor fluctuations throughout.
- There was an overall decrease in 5 to 10 Years from 1981 (27%) to 1998 (12%).
- For 10 to 15 Years, there was fluctuation between 1981 and 1986 (both 4%), plateauing thereafter at 6% to 1998.
- Fifteen to 20 Year category was stable from 1981 to 1998 at an average of 1%.
- 20 Plus Years decreased from 1% in 1981 to zero in 1998.
- The category of Life increased from 1981 (16%) to 1998 (21%) with minor fluctuation throughout.

**Chart 10: Aggregate Sentence Per Total Federally Incarcerated Adult Women Population, 1981-1991 & 1994-1998**



Note: Data were not available for 1992 and 1993 for all categories.  
Data were not available for 1992 - 1998 for the less than 2 years category.

## 11. Time Served since Last Admission, 1981-1991 & 1994-1998

### *Actual Number*

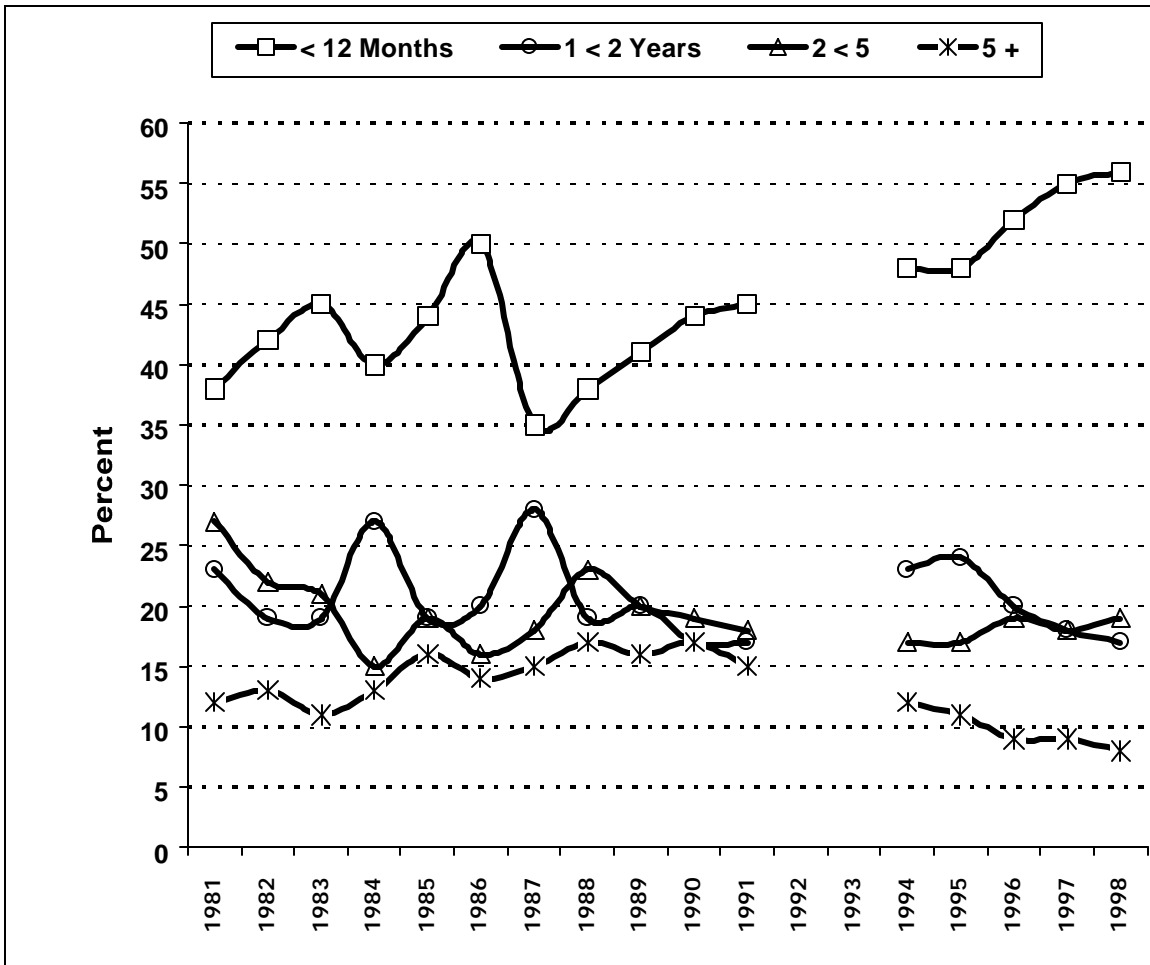
- There was a substantial increase in Less Than 12 Months from 1981 (76) to 1998 (179).
- Time served between 1 and 2 Years increased (with slight fluctuation) from 1982 (36) to 1987 (80). There was relative stability from 1988 (53) to 1991 (55). A notably higher number in 1994 (73) was followed by a decrease trend until 1998 (55).

- Focussing on 2 to 5 Years, there was a decrease from 1981 (53) to 1984 (35), followed by an increase until 1988 (62), followed by a decrease in 1989 (56), and plateauing to 1991. This plateau was followed by an increase from 1994 (52) to 1998 (61).
- There was an increase from 1981 (23) to 1990 (51) in 5 Plus Years. This was followed by a decrease to 1998 (26).

***Percentage Distribution by Time Served Since Last Admission (see Chart 11)***

- There was an increase from 1981 (38%) to 1998 (56%) for those serving Less Than 12 Months.
- Time served between 1 to 2 Years increased from 1982 (19%) to 1984 (27%), decreased in 1985 (19%), and then increased to 1987 (28%). Following a decrease in 1988 (19%), there was relative stability to 1991 (17%). Overall, there was a decrease from 1994 (23%) to 1998 (17%).
- Time served between 2 to 5 Years revealed a decrease from 1981 (27%) to 1984 (15%), increasing thereafter to 1988 (23%). The rate decreased slightly from 1989 (20%) to 1998 (19%), averaging at 18%.
- There was an increase in 5 Plus from 1981 (12%) to 1991 (15%). A decrease trend began in 1994 (12%) through to 1998 (8%).

**Chart 11: Time Served Since Last Admission Per Total Federally Incarcerated Adult Women Population, 1981-1991 & 1994-1998**



Note: Data were not available for 1992 and 1994.

**12. Number of Previous Commitments, 1981-1998**

**Actual Number**

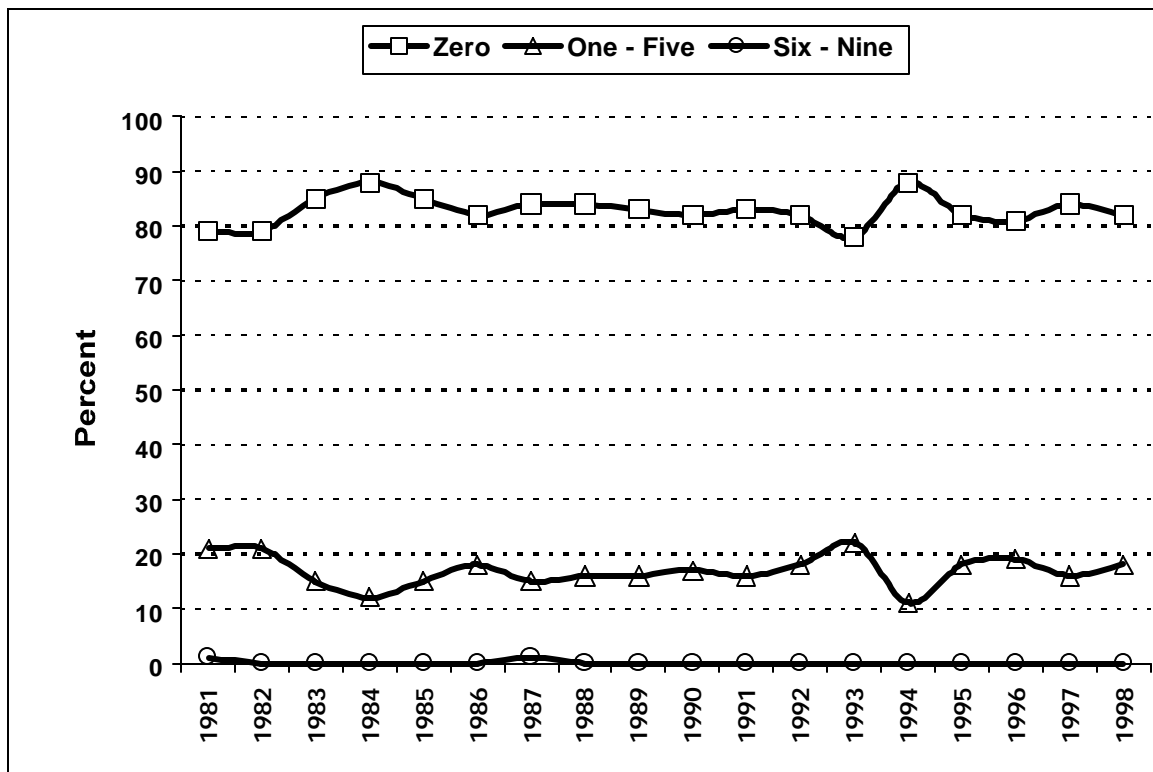
- There was an increase in offenders with No Previous Commitments between 1981 (157) and 1998 (262).
- 1 to 5 Previous Commitments slightly increased from 1981(42) to 1998 (59). There were several fluctuations, with the most prominent a decrease from 1993 (70) to 1994 (36).

- 6 to 9 Previous Commitments was negligible in representation ranging from zero to 2 throughout the 18-year span.
- There were no inmates with 10 Plus Previous Commitments between 1981 to 1998.

**Percentage Distribution by Number of Previous Commitments (see Chart 12)**

- Overall, the percentage of inmates with No Previous Commitments increased slightly from 1981 (79%) to 1998 (82%). The highest percentage was in 1984 and 1994 (both 88%).
- The percentage of inmates with 1 to 5 Previous Commitments decreased from 1981 (21%) to 1998 (18%). There was fluctuation throughout the 18-year period, with the highest percentage in 1993 (22%) and the lowest in 1994 (11%).
- The 6 to 9 Previous Commitments percentage was relatively stable.
- There were no inmates with 10 Plus Previous Commitments.

**Chart 12: Number of Previous Federal Commitments Per Total Federally Incarcerated Women Population, 1981-1998**



### **13. Region of Sentence, 1987-1991**

#### ***Actual Number***

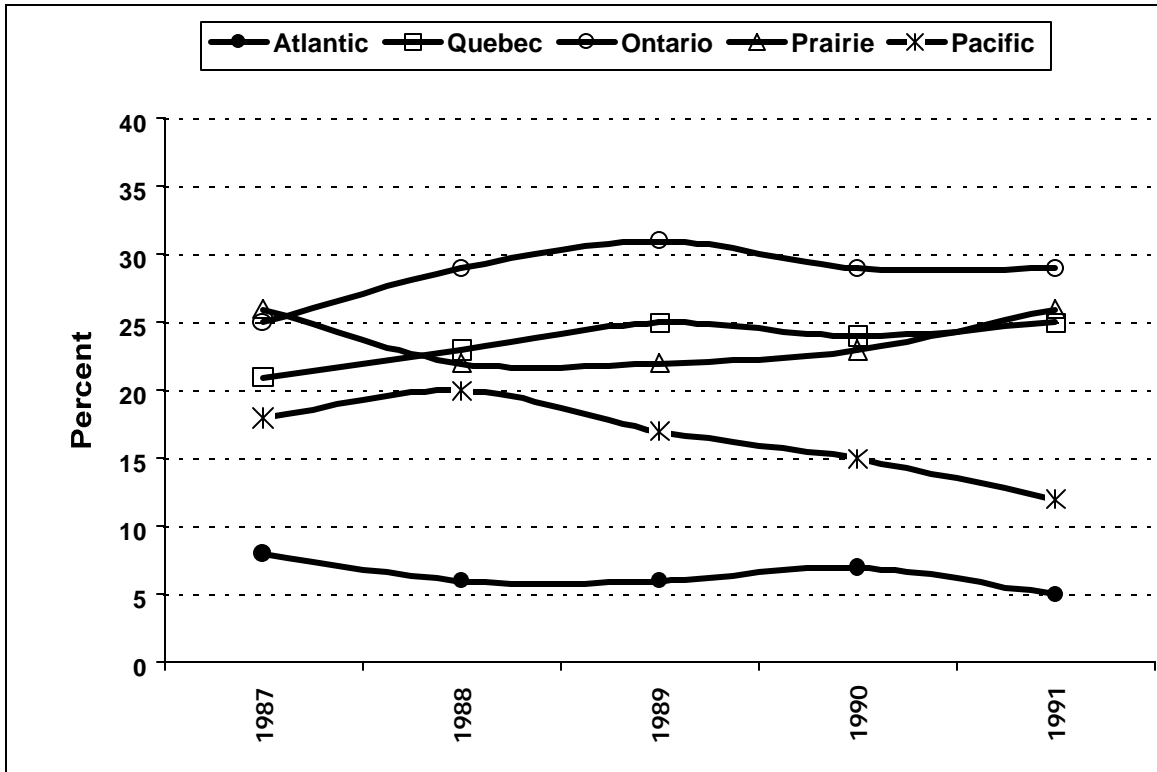
- Overall, the Atlantic Region decreased between 1987 (23) and 1991 (17).
- There was a steady increase in the Quebec Region (59 to 80).
- In the Ontario Region, there was a steady increase (72 to 91).
- In the Prairie Region, there was a decrease from 1987 (73) to 1988 (59), followed by an increase trend to 1991 (83).
- There was a steady decrease in the Pacific Region from 1987 (56) to 1991 (36).
- Offenders whose region of sentence was Outside Canada increased slightly from 1 in 1987 to 3 in 1991.

#### ***Percentage Distribution by Region of Sentence (see Chart 13)***

- The percentage decreased in the Atlantic region from 1987 (8%) to 1991 (5%).
- In the Quebec region, the percentage increased slightly (21% to 25%).
- The percentage increased in the Ontario region from 1987 (25%) to 1991 (29%).
- The Prairie region experienced a slight decrease from 1987 (26%) to 22/23% in 1988-90, before returning to 26% in 1991.
- The Pacific region experienced an overall decrease (18% to 12%).
- Offenders whose region of sentence was outside Canada increased from 1987 (0%) to 1991 (1%), but the percentage remained minimal.



**Chart 13: Region of Sentence Per Total Federally Incarcerated Adult Women Population, 1987-1991**



## **APPENDIX A**

## METHODOLOGY

### 1. Data

Due to inconsistency in data collection methods, not all data for the 1981-1998 period were available. It is indicated in the report where data were unavailable. The accessible data used to compile this report were:

- |    |                                 |           |
|----|---------------------------------|-----------|
| 1. | Federal women inmate population | 1981-1998 |
|----|---------------------------------|-----------|

#### *OFFENDER CHARACTERISTICS*

- |    |                     |           |
|----|---------------------|-----------|
| 2. | Age                 | 1981-1998 |
| 3. | Race                | 1981-1998 |
| 4. | Marital status      | 1981-1998 |
| 5. | Citizenship         | 1981-1993 |
| 6. | Language spoken     | 1981-1998 |
| 7. | Region of residence | 1981-1993 |

#### *OFFENCE CHARACTERISTICS*

- |     |                                  |                        |
|-----|----------------------------------|------------------------|
| 8.  | Type of admission                | 1981-1998              |
| 9.  | Major offence                    | 1981-1991              |
| 10. | Aggregate sentence               | 1981-1991<br>1994-1998 |
| 11. | Time served since last admission | 1981-1991<br>1994-1998 |
| 12. | Number of previous commitments   | 1981-1998              |
| 13. | Region of sentence               | 1987-1991              |

## 2. Offender and Offence Characteristic Measures

### A. Offender Characteristic Measures

Variable	Grouping Reported	
Age	<ul style="list-style-type: none"> <li>• &lt;18</li> <li>• 18-24</li> <li>• 25-34</li> </ul>	<ul style="list-style-type: none"> <li>• 35-49</li> <li>• 50+</li> <li>• Unknown</li> </ul>
Race	<ul style="list-style-type: none"> <li>• Caucasian</li> <li>• North American Indian</li> <li>• Metis</li> <li>• Inuit</li> </ul>	<ul style="list-style-type: none"> <li>• Asiatic</li> <li>• Black</li> <li>• Other</li> <li>• Unknown</li> </ul>
Marital Status	<ul style="list-style-type: none"> <li>• Single</li> <li>• Married/Common- Law</li> <li>• Widowed</li> </ul>	<ul style="list-style-type: none"> <li>• Separated/Divorced</li> <li>• Unknown</li> </ul>
Citizenship	<ul style="list-style-type: none"> <li>• Canadian</li> <li>• American</li> </ul>	<ul style="list-style-type: none"> <li>• Other</li> <li>• Unknown</li> </ul>
Language Spoken	<ul style="list-style-type: none"> <li>• English</li> <li>• French</li> <li>• Both English and French</li> </ul>	<ul style="list-style-type: none"> <li>• Neither English nor French</li> <li>• Unknown</li> </ul>
Region of Residence	<ul style="list-style-type: none"> <li>• Atlantic</li> <li>• Quebec</li> <li>• Ontario</li> <li>• Prairie</li> </ul>	<ul style="list-style-type: none"> <li>• Pacific</li> <li>• Outside Canada</li> <li>• Unknown</li> </ul>

## B. Offence Characteristic Measures

Type of Admission	<ul style="list-style-type: none"> <li>• Warrant of Committal</li> <li>• Parole Revocation; Parole Revocation and Offence; Parole Forfeit<sup>7</sup></li> <li>• Mandatory Supervision (M.S.)<sup>8</sup> Revocation; M.S. Revocation and Offence; 1-Chance M.S. Revocation<sup>9</sup>; M.S. Forfeit<sup>10</sup></li> <li>• Provincial Transfers<sup>11</sup>; Federal/Provincial Contract</li> <li>• Other</li> <li>• Unknown</li> </ul>
Major Offence <sup>12</sup> 1981-1986  1987-1991	<ul style="list-style-type: none"> <li>• <b>Crimes of Violence:</b> Murder, Attempted Murder, Manslaughter, Rape, Other Sexual Offences, Kidnapping and Abduction, Wounding, Assaults, Robbery, Dangerous Sexual Offenders, Dangerous Offenders</li> <li>• <b>Property Crimes:</b> Break and Enter, Theft, Possession of Stolen Goods, Fraud</li> <li>• <b>Drugs:</b> Narcotics, Food and Drug Act</li> <li>• <b>Other:</b> Offensive Weapons, Prison Breach, Criminal Negligence, Habitual Criminal, Other Offences, Other Statutes</li> <li>• <b>Unknown</b></li> <li>• <b>Crimes of Violence:</b> Murder 1, Murder 2, Capital Murder, Non-Capital Murder, Attempted Murder, Manslaughter, Rape/Aggravated Sexual Assault, Other Sexual Offences, Kidnapping and Abduction, Wound, Assaults, Robbery, Dangerous Sexual Offenders</li> <li>• <b>Property Crimes:</b> Break and Enter, Theft, Possession Stolen Goods, Fraud</li> <li>• <b>Drugs:</b> Narcotics, Food and Drug Act</li> <li>• <b>Other:</b> Offensive Weapons, Prison Breach, Criminal Negligence, Arson, Attempts, Conspiracies, Habitual Criminal, Other Offences, Other Statutes</li> <li>• <b>Unknown</b></li> </ul>

<sup>7</sup> 1981-1986 data only.

<sup>8</sup> Succeeding implementation of the 1992 Corrections and Conditional Release Act, Mandatory Supervision was replaced by Statutory Release.

<sup>9</sup> 1987-1991 data only.

<sup>10</sup> 1981-1986 data only.

<sup>11</sup> Federal inmates incarcerated in provincial institutions 1981-1986 and provincial inmates incarcerated in federal institutions 1987-1991.

Aggregate Sentence	<ul style="list-style-type: none"> <li>• &lt;2 years</li> <li>• 2&lt;5 years</li> <li>• 5&lt;10 years</li> <li>• 10&lt;15 years</li> </ul>	<ul style="list-style-type: none"> <li>• 15&lt;20 years</li> <li>• 20+ years</li> <li>• Life</li> <li>• Unknown</li> </ul>
Time Served Since Last Admission	<ul style="list-style-type: none"> <li>• &lt;12 months</li> <li>• 1&lt;2 years</li> <li>• 2&lt;5 years</li> </ul>	<ul style="list-style-type: none"> <li>• 5+ years</li> <li>• Unknown</li> </ul>
Number of Previous Commitments	<ul style="list-style-type: none"> <li>• 0</li> <li>• 1-5</li> <li>• 6-9</li> </ul>	<ul style="list-style-type: none"> <li>• 10+</li> <li>• Unknown</li> </ul>
Region of Sentence	<ul style="list-style-type: none"> <li>• Atlantic</li> <li>• Quebec</li> <li>• Ontario</li> <li>• Prairie</li> </ul>	<ul style="list-style-type: none"> <li>• Pacific</li> <li>• Outside Canada</li> <li>• Unknown</li> </ul>

---

<sup>12</sup> See Appendix B for listing of crimes included in each category.

### 3. Offender and Offence Characteristics Defined

#### Offender Characteristics

Age	The current age of the inmate (in years only) as of the date of the profile (March 31 of the given year except for 1981 which is September 30).
Race	The particular ethnic or racial group the inmate claims to identify with.
Marital Status	The marital status claimed by the inmate at the time of her admission.
Citizenship	The country in which the inmate established citizenship.
Language Spoken	The language(s) the inmate claims as her primary language at the time of admission.
Region of Residence	The inmate's region of residence at the time of conviction for the offence.

#### Offence Characteristics

Type of Admission	The basis for the inmate's reception and admission to a penitentiary.
Major Offence	<p>The offence for which the inmate was given the longest sentence for the current period of incarceration. If the same length of sentence was awarded to more than one offence, the major offence is the most serious as measured by the maximum penalty allowed by law. If more than one offence has the same maximum penalty, major offence is the first of these offences listed on the warrant of committal.</p> <p>Note: If the inmate is admitted on a technical violation (violates conditions of her release, but has not been sentenced for an offence) the major offence reverts to the previous major offence.</p>
Aggregate Sentence	The total of all the sentences awarded to the inmate for her current term of incarceration, including any remnant of parole or mandatory supervision period if the parole or mandatory supervision was revoked.
Time Served Since Last Admission	The length of time the inmate has served since her most recent admission date.
Number of Previous Commitments	<p>The number of previous admissions to a federal institution.</p> <p>Note: This does not include sentences completed prior to 1970.</p>
Region of Sentence	The region in which the inmate was sentenced for her major offence.

--	--



## **APPENDIX B**

## MAJOR OFFENCE CATEGORY DEFINITIONS

Other Sexual Offences	Attempted Rape; Sexual Assault; Sexual Intercourse with Women Under 14; Sexual Intercourse with Women Under 16; Sexual Intercourse with Feeble Minded; Indecent Assault on Women; Incest; Seduction of Women Under 18; Seduction with Promise of Marriage; Sexual Intercourse with Step-Daughter; Sexual Intercourse with Women Employee, Seduction of Women Passenger on Vessel; Buggery or Bestiality; Indecent Assault on Men; Gross Indecency
Kidnapping and Abduction	Kidnapping; Forcible Confinement; Abduction of Women; Abduction of Women Under 14, Abduction of Women Under 16
Wounding	Causing Bodily Harm with Intent to Wound, Maim or Disfigure; Causing Bodily Harm with Intent to Endanger; Causing Bodily Harm with Intent to Prevent Arrest or Detention
Assaults	Causing Bodily Harm to Servant or Apprentice, Common Assault (Old Legislation), Assault Causing Bodily Harm; Assault with Intent
Robbery	Robbery with Violence, Armed Robbery, Robbery, Stopping Mail with Intent
Offensive Weapons	Intent to Cause Explosion; Explosive Substance Likely to Cause Death or Bodily Harm; Explosive Substance Likely to Cause Property Damage; Possession of Explosives; Possession of Explosive Substance; Possession of Bomb, Grenade, etc.; Use of Firearm in Committing or Attempting to Commit; Point Firearm, Careless Use of Firearm; Possession of Weapon Dangerous to Public Peace; Possession of Weapon at a Public Meeting; Carry Concealed Weapon; Possession of a Prohibited Weapon; Prohibited Weapon in a Car; Possession of Unregistered Restricted Weapon; Possession of a Weapon in a Place Not Indicated on Certificate; Delivering Weapon to Person Under 16; Wrongful Delivery of Firearms; Importation or Delivery of a Prohibited Weapon; Delivery of Restricted Weapon to a Person Without Permit; Importing Restricted Weapon; Delivery of Firearm to Person without Acquisition Certificate; Acquisition of Firearm without Acquisition Certificate; Possession of a Weapon While Prohibited by Court; Alter, Deface or Remove Serial Number of Firearm; Possession of Weapon with Altered, Defaced or Removed Serial ; Alter, Deface or Remove Serial Number of Firearm; Possession of Weapon with Altered, Defaced or Removed Serial ; Failure to Report Found, Lost, Misplaced or Stolen Weapon; False Statement in Procuring Firearm Acquisition Certificate; Tamper with Acquisition Certificate; Failure to Comply with Conditions on Certificate
Prison Breach	Prison Breach by Force or Violence; Prison Breach with Intent; Escape Lawful Custody; Unlawfully at Large; Failure to Attend Court; Breach of Condition;

	Summons – Failure to Appear; Fail to Attend; Appearance Notice – Failure to Appear; Permit Escape – Assist Escape; Direct Escape; Rescue/Assist escape; Peace Officer or Prison Employee Permits Escape; Assist Prisoner of War or Parolee to Escape
Break and Enter	Break and Enter with Intent; Break, Enter and Commit; Break Out-Dwelling-Other; Unlawfully in Dwelling
Theft	Theft; Theft Over; Theft Under; Theft of Cattle; Take Motor Vehicle or Vessel without Consent; Theft, Concealment, Forgery, etc. of Credit Cards; Theft from the Mail
Possession of Stolen Goods	Possession of property Obtained by Crime; Possession of Stolen Property Over; Possession of Stolen Property Under; Bringing into Canada, Property Obtained by Crime
Fraud	Fraud Upon Government; Breach of Trust by Public Official; Personating Peace Officer; Cheating at Gambling; Obtain Property by False Pretences; Obtain Credit by False Pretences; False Pretences Under, Over; False Pretences General; Obtain Execution of Valuable security by Fraud; Fraudulently Obtain Food and Lodging; Pretending to Practice Witchcraft, Telling Fortunes, Etc.; Forgery, Uttering Forged Documents; Exchequer Bill Paper, Making, Possessing, etc.; Counterfeit Proclamation; Telegram in False Name; Drawing Document Without Authority; Obtain By Means of False Document; Use, Possession of Counterfeit Stamp; Damaging Documents; Falsifying Certified Copy, Extract or Certificate; Fraud Under, Over; Fraudulent manipulation of Stock Exchange Transaction, etc.; Gaming in Stocks or Merchandise; Broker Reducing Stocks For His Own Accounts; Fraudulent concealment of Title Documents; Fraudulent Registration of Title; Fraudulent sale of property; Giving or Receiving Misleading Receipt; Fraudulent Disposal or Receipt of Goods or Property; Fraud in Relation to Fares; Obtaining Transportation by Fraud; Fraud in Relation to Mines; Falsification of Books and Documents; Falsifying Employment Records; False Return By Public Officer; Trader Failing to Keep Accounts; personification; Forgery of Trademarks; Falsely Claiming Royal Warrant; Offences Relating to Wrecks; Applying or Removing Trademarks; Selling Defective Stores to Her Majesty; Unlawful Use of Military Uniforms, Certificates, etc.; Buying, Receiving or Trading in Military Stores
Criminal Negligence	Cause Death by Criminal Negligence; Cause Bodily Harm by Criminal Negligence
Arson	Arson; Willfully Set Fire; Set Fire By Negligence
Attempts	Attempts to Commit An Indictable Offence

Conspiracies	Conspire to Commit An Indictable Offence
Other Criminal Code	All Criminal Codes Not Listed Elsewhere
Narcotic Control Act	Possession of Narcotics; Trafficking in Narcotics; Possession of Narcotics for Trafficking; Importing and Exporting Narcotics; Cultivating Opium, Poppy, Marijuana
Food and Drug Act	Violation of FDA Regulations; Trafficking in Controlled Drugs; Possession of Controlled Drugs for Trafficking; Possession of Restricted Drug, Possession of Restricted Drugs for Trafficking
Other Statutes	Juvenile Delinquent Act; Other Federal Statutes; Provincial Statutes; Municipal by-laws

## APPENDIX C

**Table 1A: Total Federally Incarcerated Adult Women's Population & Incarceration Rate Per 100,000 Women Population, 1981-1998, Canada**

March 31 <sup>st</sup> Profile	Women Inmates	Per 100,000 Population
1981	200	2.2
1982	194	2.1
1983	229	2.4
1984	228	2.4
1985	216	2.2
1986	279	2.8
1987	284	2.8
1988	273	2.7
1989	285	2.7
1990	308	2.9
1991	317	2.9
1992	313	2.9
1993	323	2.9
1994	315	2.8
1995	296	2.6
1996	308	2.7
1997	328	2.8
1998	321	2.7

Source: Statistics Canada, Census and Household Statistics Branch, Demography Division June 1<sup>st</sup> population and estimates.

**Table 1B: Total Adult Women's (Age 18+) Population, Canada**

March 31 <sup>st</sup> Profile	Population in Millions
1981	9.10
1982	9.30
1983	9.47
1984	9.63
1985	9.76
1986	9.90
1987	10.07
1988	10.23
1989	10.45
1990	10.62
1991	10.76
1992	10.89
1993	11.03
1994	11.18
1995	11.33
1996	11.47
1997	11.63
1998	11.79



Source: Statistics Canada, Census and Household Statistics Branch, Demography Division June 1<sup>st</sup> population and estimates.

**Table 2: Federally Incarcerated Women's Inmate Age Profile, 1981-1998**

March 31st	1981	1982	1983	1984	1985	1986	1987	1988	1989	1990	1991	1992	1993	1994	1995	1996	1997	1998
<b>Less than 18</b>	0	2	0	1	0	0	0	0	0	0	0	0	0	0	0	0	0	0
%*	0	1	0	0	0	0	0	0	0	0	0	0	0	0	0	0	0	0
<b>18 to 24</b>	50	47	62	54	44	62	70	52	48	38	37	28	31	29	31	55	47	40
%	25	24	27	24	20	22	25	19	17	12	12	10	10	9	10	18	14	13
<b>25 to 34</b>	89	88	111	106	104	122	121	121	121	133	136	122	127	136	129	111	135	117
%	45	45	49	47	48	44	43	44	43	43	43	38	39	43	44	36	41	36
<b>35 to 49</b>	51	48	43	47	54	73	73	79	93	116	122	135	124	115	110	120	122	133
%	26	25	19	21	25	26	26	29	33	38	39	43	38	37	37	39	37	41
<b>50 or more</b>	10	9	13	20	14	22	20	21	23	21	21	28	41	35	26	22	24	31
%	5	5	6	9	7	8	7	8	8	7	7	9	13	11	9	7	7	10
<b>TOTAL</b>	200	194	229	228	216	279	284	273	285	308	317	313	323	315	296	308	328	321
Total %**	101	100	101	101	100	100	101	100	101	100	100	101	100	100	100	100	99	99

\* % of total federal women's inmate population.

\*\* TOTAL of % of total federal women's inmate population: (1) may not add to 100 due to rounding, and (2) accounts for unknown cases.

**Table 3: Federally Incarcerated Women's Inmate Race Profile, 1981-1998**

March 31 <sup>st</sup>	81	82	83	84	85	86	87	88	89	90	91	92	93	94	95	96	97	98
<b>Caucasian</b>	158	152	176	170	165	215	211	210	214	215	218	204	228	216	190	178	191	191
%*	78	78	77	75	76	77	74	77	75	70	69	65	71	69	64	58	58	60
<b>N.A. Indian</b>	28	26	32	33	26	31	38	26	25	31	39	49	36	46	46	49	52	48
%	14	13	14	14	12	11	13	10	9	10	12	16	11	15	16	16	16	15
<b>Metis</b>	6	6	8	9	10	12	13	9	13	10	8	10	15	8	15	14	15	8
%	3	3	3	4	5	4	5	3	5	3	3	3	5	3	5	5	5	2
<b>Inuit</b>	1	2	2	1	2	1	2	2	3	2	2	3	3	3	3	1	2	2
%	1	1	1	0	1	0	1	1	1	1	1	1	1	1	1	0	1	1
<b>Aboriginal Sub-Total**</b>	35	34	42	43	38	44	53	37	41	43	49	62	54	57	64	64	69	58
%	18	18	18	19	18	16	19	14	14	14	16	20	17	18	22	21	21	18
<b>Asiatic</b>	1	1	0	0	1	3	4	4	7	7	5	10	5	6	4	11	9	5
%	1	1	0	0	1	1	1	1	2	2	2	3	2	2	1	4	3	2
<b>Black</b>	2	0	3	6	2	3	6	8	10	25	28	25	21	23	22	36	37	29
%	1	0	1	3	1	1	2	3	4	8	9	8	7	7	7	12	11	9
<b>Other</b>	4	5	7	9	10	12	10	11	8	9	11	11	13	6	7	8	9	19
%	2	3	3	4	5	4	4	4	3	3	3	4	4	2	2	3	3	6
<b>Unknown</b>	0	2	1	0	0	2	0	3	5	9	6	1	2	7	9	11	13	19
%	0	1	0	0	0	1	0	1	2	3	2	0	1	2	3	4	4	6

<b>TOTAL</b>	200	194	229	228	216	279	284	273	285	308	317	313	323	315	296	308	328	321
<b>%***</b>	101	100	99	101	100	100	100	100	100	100	101	100	102	100	99	102	101	101

% of total federal women inmate population. \*\* TOTAL ABORIGINAL is the summation of North American Indian, Metis and Inuit.

\*\*\* TOTAL of % of total federal women inmate population: (1) may not add to 100 due to rounding, and (2) accounts for unknown cases.

**Table 4: Federally Incarcerated Women's Inmate Marital Status Profile, 1981-1998**

March 31 <sup>st</sup>	81	82	83	84	85	86	87	88	89	90	91	92	93	94	95	96	97	98
<b>Single</b>	90	91	118	107	93	132	152	132	128	135	147	137	138	132	137	132	151	140
%*	45	47	52	47	43	47	54	48	45	44	46	44	43	42	46	43	46	44
<b>Married/Common-Law</b>	61	59	66	74	80	84	76	87	89	89	91	108	104	101	88	84	92	109
%	31	30	29	32	37	30	27	32	31	29	29	35	32	32	30	27	28	34
<b>Widowed</b>	13	12	7	12	9	10	11	13	10	14	12	10	13	36	31	44	38	18
%	7	6	3	5	4	4	4	5	4	5	4	3	4	11	10	14	12	6
<b>Separated/Divorced</b>	34	30	36	35	33	49	44	33	41	43	36	40	43	34	28	32	33	37
%	17	15	16	15	15	18	15	12	14	14	11	13	13	11	10	10	10	12
<b>Unknown</b>	2	2	2	--	1	4	1	8	17	27	31	18	25	12	12	16	14	17
%	1	1	1	--	1	1	0	3	6	9	10	6	8	4	4	5	4	5
<b>TOTAL</b>	200	194	229	228	216	279	284	273	285	308	317	313	323	315	296	308	328	321
% **	101	99	101	99	100	100	100	100	100	101	100	101	100	100	100	99	100	101

% of total federal women inmate population.

\*\* TOTAL of % of total federal women inmate population: (1) may not add to 100 due to rounding, and (2) accounts for unknown cases.



**Table 5: Federally Incarcerated Women's Inmate Citizenship Profile, 1981-1993**

March 31 <sup>st</sup>	81	82	83	84	85	86	87	88	89	90	91	92	93
<b>Canadian</b>	184	176	213	209	192	245	255	243	248	256	263	263	280
% *	92	91	93	92	89	88	90	89	87	83	83	84	87
<b>American</b>	12	10	7	6	7	9	10	9	11	17	15	11	16
%	6	5	3	3	3	3	4	3	4	6	5	4	5
<b>Other</b>	4	8	9	13	17	25	18	16	20	20	30	32	20
%	2	4	4	6	8	9	6	6	7	6	10	10	6
<b>Unknown</b>	0	0	0	0	0	0	1	5	6	15	9	7	7
%	0	0	0	0	0	0	0	2	2	5	3	2	2
<b>TOTAL</b>	200	194	229	228	216	279	284	273	285	308	317	313	323
% **	100	100	100	101	100	100	100	100	100	100	101	100	100

\* % of total federal women inmate population.

\*\* TOTAL of % of total federal women inmate population: (1) may not add to 100 due to rounding, and (2) accounts for unknown cases.

**Table 6: Federally Incarcerated Women's Language Spoken Profile, 1981-1998**

March 31 <sup>st</sup>	81	82	83	84	85	86	87	88	89	90	91	92	93	94	95	96	97	98
<b>English</b>	151	149	171	166	156	211	224	209	216	235	244	247	251	231	239	252	271	266
% *	76	77	75	73	72	76	79	76	76	76	77	79	78	73	81	82	83	83
<b>French</b>	18	16	22	28	22	31	31	26	35	44	53	51	61	58	38	35	38	42
%	9	8	10	12	10	11	11	10	12	14	17	16	19	18	13	11	12	13
<b>Both</b>	28	27	33	29	31	30	26	27	18	5	5	4	6	18	14	20	18	13
%	14	14	14	13	14	11	9	10	6	2	2	1	2	6	5	6	5	4
<b>Neither</b>	3	2	3	5	7	7	2	1	1	2	1	1	1	8	5	1	1	0
%	2	1	1	2	3	3	1	0	0	1	0	0	0	3	2	0	0	0
<b>Unknown</b>	0	0	0	0	0	0	1	10	15	22	14	10	4	0	0	0	0	0
%	0	0	0	0	0	0	0	4	5	7	4	3	1	0	0	0	0	0
<b>TOTAL</b>	200	194	229	228	216	279	284	273	285	308	317	313	323	315	296	308	328	321
% **	101	100	100	100	99	101	100	101	99	100	100	99	100	100	101	99	100	100

\* % of total federal women inmate population.

\*\* TOTAL of % of total federal women inmate population: (1) may not add to 100 due to rounding, and (2) accounts for unknown cases.



**Table 7: Federally Incarcerated Women's Region of Residence Profile, 1981-1993**

March 31 <sup>st</sup>	81	82	83	84	85	86	87	88	89	90	91	92	93
<b>Atlantic</b>	15	14	16	13	13	24	21	14	15	20	17	18	22
% *	8	7	7	6	6	9	7	5	5	6	5	6	7
<b>Quebec</b>	51	47	60	56	49	62	60	61	67	72	71	64	76
%	26	24	26	25	23	22	21	22	24	23	22	20	24
<b>Ontario</b>	41	38	48	55	59	64	68	73	75	77	85	97	89
%	21	20	21	24	27	23	24	27	26	25	27	31	28
<b>Prairie</b>	42	42	52	54	48	60	69	56	58	66	76	73	80
%	21	22	23	24	22	22	24	21	20	21	24	23	25
<b>Pacific</b>	39	37	40	34	33	52	52	52	49	46	40	42	38
%	20	19	17	15	15	19	18	19	17	15	13	13	12
<b>Outside Canada</b>	10	10	7	7	8	9	9	10	15	18	18	14	13
%	5	5	3	3	4	3	3	4	5	6	6	4	4
<b>Unknown</b>	2	6	6	9	6	8	5	7	6	9	10	5	5
%	1	3	3	4	3	3	2	3	2	3	3	2	2
<b>TOTAL</b>	200	194	229	228	216	279	284	273	285	308	317	313	323
% **	102	100	100	101	100	101	99	101	99	99	100	99	102

Note: Data were not available for 1994 -1998.

\* % of total federal women inmate population.

\*\* TOTAL of % of total federal women inmate population: (1) may not add to 100 due to rounding, and (2) accounts for unknown cases.

**Table 8: Federally Incarcerated Women's Type of Admission Profile, 1981-1998**

March 31 <sup>st</sup>	81	82	83	84	85	86	87	88	89	90	91	92	93	94	95	96	97	98
<b>Warrant of Committal</b>	173	177	202	208	196	257	261	244	253	269	286	284	287	271	240	244	271	261
% *	87	91	88	91	91	92	92	89	89	87	90	91	89	86	81	79	83	81
<b>Parole Revocation</b>	11	5	5	7	6	8	8	7	8	9	10	18	23	21	29	30	32	37
%	6	3	2	3	3	3	3	3	3	3	3	6	7	7	10	10	10	12
<b>S.R./M.S. Revocation**</b>	12	9	14	8	9	7	4	6	5	8	7	4	8	16	24	26	21	22
%	6	5	6	4	4	3	1	2	2	3	2	1	3	5	8	8	6	7
<b>Prov./Fed. Transfer</b>	4	3	6	4	5	6	10	13	14	14	7	2	2	0	1	0	0	0
%	2	2	3	2	2	2	4	5	5	5	2	1	1	0	0	0	0	0
<b>Other</b>	0	0	2	1	0	1	1	3	5	8	6	4	3	7	2	8	4	1
%	0	0	1	0	0	0	0	1	2	3	2	1	1	2	1	3	1	0
<b>Unknown</b>	0	0	0	0	0	0	0	0	0	0	1	1	0	0	0	0	0	0
% of Total	0	0	0	0	0	0	0	0	0	0	0	0	0	0	0	0	0	0
<b>TOTAL</b>	220	194	229	228	216	279	284	273	285	308	317	313	323	315	296	308	328	321
% ***	101	101	100	100	100	100	100	100	101	101	99	100	101	100	100	100	100	100

\* % of total federal women inmate population.

\*\* Statutory Release (previously termed Mandatory Supervision).

\*\*\* TOTAL of % of total federal women inmate population: (1) may not add to 100 due to rounding, and (2) accounts for unknown cases.

**Table 9: Federally Incarcerated Women's Inmate Most Serious Offence, 1981-1991**

<b>March 31<sup>st</sup></b>	<b>81</b>	<b>82</b>	<b>83</b>	<b>84</b>	<b>85</b>	<b>86</b>	<b>87</b>	<b>88</b>	<b>89</b>	<b>90</b>	<b>91</b>
Crimes of Violence	110	115	131	142	129	154	167	158	170	176	174
% *	55	59	57	62	60	55	59	58	60	57	55
Property Crimes	30	24	31	28	28	35	35	44	37	35	33
%	15	12	14	12	13	13	12	16	13	11	10
Drugs	32	32	38	34	36	66	45	40	42	57	67
%	16	16	17	15	17	24	16	15	15	19	21
Other	28	23	29	24	23	24	36	31	36	34	37
%	14	12	13	11	11	9	13	11	13	11	12
Unknown	0	0	0	0	0	0	1	0	0	6	6
%	0	0	0	0	0	0	0	0	0	2	2
<b>TOTAL</b>	<b>200</b>	<b>194</b>	<b>229</b>	<b>228</b>	<b>216</b>	<b>279</b>	<b>284</b>	<b>273</b>	<b>285</b>	<b>308</b>	<b>317</b>
<b>% of Total**</b>	<b>100</b>	<b>99</b>	<b>101</b>	<b>100</b>	<b>101</b>	<b>101</b>	<b>100</b>	<b>100</b>	<b>101</b>	<b>100</b>	<b>100</b>

Note: Data were not available for 1992-1998.

\* % of total federal women inmate population.

\*\* TOTAL of % of total federal women inmate population: (1) may not add to 100 due to rounding, and (2) accounts for unknown cases.

**Table 10: Federally Incarcerated Women's Aggregate Sentence Profile, 1981-1991 & 1994-1998**

March 31 <sup>st</sup>	81	82	83	84	85	86	87	88	89	90	91	92	93	94*	95	96	97	98
<2 years	11	6	14	14	9	11	12	13	12	13	15	--	--	--	--	--	--	--
% **	6	3	6	6	4	4	4	5	4	4	5	--	--	--	--	--	--	--
2-5years	95	93	107	107	102	140	146	140	139	154	160	--	--	193	167	170	187	190
%	48	48	47	47	47	50	51	51	49	50	51	--	--	61	56	55	57	59
5-10 years	53	48	55	51	53	67	56	48	57	63	58	--	--	45	50	48	45	39
%	27	25	24	22	25	24	20	18	20	21	18	--	--	14	17	16	14	12
10-15 years	8	10	14	12	6	11	16	16	17	19	20	--	--	18	17	21	21	20
%	4	5	6	5	3	4	6	6	6	6	6	--	--	6	6	7	6	6
15-20 years	1	1	1	1	2	1	3	2	2	1	3	--	--	5	4	4	4	4
%	1	1	0	0	1	0	1	1	1	0	1	--	--	2	1	1	1	1
20+ years	1	2	1	1	2	2	1	1	4	1	1	--	--	1	1	2	1	1
%	1	1	0	0	1	1	0	0	1	0	0	--	--	0	0	1	0	0
Life	31	34	37	42	42	47	50	53	54	56	58	--	--	53	56	63	70	67
%	16	18	16	18	19	17	18	19	19	18	18	--	--	17	19	20	21	21
Unknown	0	0	0	0	0	0	0	0	0	1	2	--	--	0	0	0	0	0
%	0	0	0	0	0	0	0	0	0	0	1	--	--	0	0	0	0	0
<b>TOTAL</b>	200	194	229	228	216	279	284	273	285	308	317	--	--	315	296	308	328	321
<b>% ***</b>	103	101	99	98	100	100	100	100	100	99	100	--	--	100	99	100	99	99

Note: Data were not available for 1992 & 1993.

\* Data were not available for the <2 years sentence for 1994-1998.

\*\* % of total federal women inmate population.

\*\*\* TOTAL of % of total federal women inmate population: (1) may not add to 100 due to rounding, and (2) accounts for unknown cases.

**Table 11: Federally Incarcerated Women's Time Served Since Last Admission Profile, 1981-1991 & 1994-1998**

March 31 <sup>st</sup>	81	82	83	84	85	86	87	88	89	90	91	92	93	94	95	96	97	98
<12 months	76	81	103	90	94	139	99	105	117	134	142	--	--	152	142	160	179	179
% *	38	42	45	40	44	50	35	38	41	44	45	--	--	48	48	52	55	56
1-2 years	46	36	43	62	42	55	80	53	57	53	55	--	--	73	71	61	59	55
%	23	19	19	27	19	20	28	19	20	17	17	--	--	23	24	20	18	17
2- 5 years	53	42	48	35	41	44	52	62	56	57	56	--	--	52	51	60	60	61
%	27	22	21	15	19	16	18	23	20	19	18	--	--	17	17	19	18	19
5+ years	23	25	25	30	35	38	43	47	46	51	49	--	--	38	32	27	28	26
%	12	13	11	13	16	14	15	17	16	17	15	--	--	12	11	9	9	8
Unknown	2	10	10	11	4	3	10	6	9	13	15	--	--	0	0	0	2	0
%	1	5	4	5	2	1	4	2	3	4	5	--	--	0	0	0	1	0
<b>TOTAL</b>	200	194	229	228	216	279	284	273	285	308	317	--	--	315	296	308	328	321
% **	101	101	100	100	100	101	100	99	100	101	100	--	--	100	100	100	101	100

Note: Data were not available for 1992 & 1993.

\* % of total federal women inmate population.

\*\* TOTAL of % of total federal women inmate population: (1) may not add to 100 due to rounding, and (2) accounts for unknown cases.

**Table 12: Federally Incarcerated Women's Number of Previous Commitments Profile, 1981-1998**

March 31 <sup>st</sup>	81	82	83	84	85	86	87	88	89	90	91	92	93	94	95	96	97	98
<b>None</b>	157	153	194	200	184	230	238	229	237	254	264	257	252	278	242	251	275	262
% *	79	79	85	88	85	82	84	84	83	82	83	82	78	88	82	81	84	82
<b>1-5</b>	42	41	34	28	32	49	44	44	47	53	52	56	70	36	53	57	53	59
%	21	21	15	12	15	18	15	16	16	17	16	18	22	11	18	19	16	18
<b>6-9</b>	1	0	1	0	0	0	2	0	1	1	1	0	0	1	1	0	0	0
%	1	0	0	0	0	0	1	0	0	0	0	0	0	0	0	0	0	0
<b>10+</b>	0	0	0	0	0	0	0	0	0	0	0	0	0	0	0	0	0	0
%	0	0	0	0	0	0	0	0	0	0	0	0	0	0	0	0	0	0
<b>Unknown</b>	0	0	0	0	0	0	0	0	0	0	0	0	1	0	0	0	0	0
%	0	0	0	0	0	0	0	0	0	0	0	0	0	0	0	0	0	0
<b>TOTAL</b>	200	194	229	228	216	279	284	273	285	308	317	313	323	315	296	308	328	321
% **	101	100	100	100	100	100	100	100	99	99	99	100	100	99	100	100	100	100

\* % of total federal women inmate population

\*\* TOTAL of % of total federal women inmate population: (1) may not add to 100 due to rounding, and (2) accounts for unknown cases.

**Table 13: Federally Incarcerated Women's Region of Sentence Profile, 1987-1991**

March 31 <sup>st</sup>	87	88	89	90	91
Atlantic	23	16	16	22	17
% *	8	6	6	7	5
Quebec	59	62	70	74	80
%	21	23	25	24	25
Ontario	72	79	88	90	91
%	25	29	31	29	29
Prairie	73	59	62	70	83
%	26	22	22	23	26
Pacific	56	55	48	47	36
%	18	20	17	15	12
Outside Canada	1	2	1	2	3
%	0	1	0	1	1
Unknown	0	0	0	3	7
%	0	0	0	1	2
<b>TOTAL</b>	284	273	285	308	317
% **	98	101	101	100	100

Note: Data were not available for 1981-1986 & 1992-1998.

\* % of total federal women inmate population.

\*\* TOTAL of % of total federal women inmate population: (1) may not add to 100 due to rounding, and (2) accounts for unknown cases.



## APPENDIX D

## RAW NUMBERS

### ***Age: (1981-1998)***

- There was great fluctuation in the 18 to 24 age category with an overall increase from 1981 (50) to 1987 (70), followed by a significant decrease to 1994 (29), a significant increase to 1996 (55), and decreasing again to 1998 (40). Overall, there was a decrease from 1981 (50) to 1998 (40).
- In the 25 to 34 age category, there was an overall increase from 1981 (89) to 1986 (122), stabilizing until 1989 (121). This was followed by an increase to 1991 (136) and followed by great fluctuation with an overall downward trend through to 1998 (117).
- The 35 to 49 age category increased significantly from 1981 (51) to 1998 (133). There was marked fluctuation throughout, with the peak in 1992 (135) and the low in 1983 (43).
- There was an overall increase in the 50 years and over category from 1981 (10) to 1993 (41), decreasing to 1996 (22), followed by an increase trend to 1998 (31).

### ***Race: (1981-1998)***

- There was a steady increase in Caucasian from 1981 (158) to 1993 (228), followed by a decrease to 1996 (178), and a slight increase to 1997 and 1998 (both 191).
- There was an overall general increase in Aboriginal from 1981 (35) to 1997 (69), with a slight decrease in 1998 (58).
- There was an overall increase in Asiatic from 1981 (1) to 1992 (10). This was followed by fluctuation through to a decrease in 1998 (5).
- There was a substantial increase in Black from 1981 (2) to 1997 (37). The greatest increase occurred between 1989 (10) and 1990 (25). There was a decrease from 1997 (37) to 1998 (29).
- There was an increase with fluctuation in Other from 1981 (4) to 1998 (19). The greatest increase occurred between 1997 (9) and 1998 (19).

***Marital Status: (1981-1998)***

- There was an increase in single from 1981 (90) to 1998 (140). There was fluctuation throughout with relative stability from 1988 (132) to 1996 (132).
- Married/Common-Law increased with minor fluctuation from 1981 (61) to 1992 (108), followed by a decrease to 1996 (84), and an increase to 1998 (109).
- Widowed remained relatively stable from 1981 (13) to 1993 (13), followed by a sharp increase in 1994 (36) through to 1997 (38), followed by a sharp decrease in 1998 (18).
- Separated/Divorced fluctuated from 1981 (34) to 1998 (37), yet remaining at a relatively stable rate over the 18-year period. The peak was in 1986 (49) and the low was in 1995 (28).

***Citizenship: (1981-1993)***

- There was a relatively steady increase in Canadian from 1981 (184) to 1993 (280).
- There was a decrease in American from 1981 (12) to 1984 (6), increasing thereafter to 1993 (16).
- There was an overall increase in Other from 1981 (4) to 1992 (32), followed by a sharp decrease in 1993 (20).

***Language: (1981-1998)***

- There was an increase in English from 1981 (151) to 1998 (266). There was an increase from 1981 (151) to 1983 (171), followed by a decrease from 1983 (171) to 1985 (156). An overall increase through to 1998 (266) followed.
- There was an increase in French from 1981 (18) to 1993 (61), with a decrease starting in 1994 (58) through to 1996 (35) followed by a slight increase to 1998 (42).
- Both languages spoken, English and French, remained relatively stable from 1981 (28) to 1988 (27), followed by a sharp decrease to 1990 (5). An overall increase to 1996 (20) was followed by a decrease trend to 1998 (13).

- Neither French nor English language spoken, fluctuated slightly through the 18-year period, with the highest point in 1994 (8) and the lowest in 1998 (0). There was an overall decrease from 3 in 1981 to 0 in 1998.

***Type of Admission: (1981-1998)***

- There was an overall increase in Warrant of Committal from 1981 (173) to 1993 (287). This was followed by a decrease to 1995 (240), increasing thereafter to 1998 (261).
- Parole Revocation consistently increased from 1982 (5) to 1998 (37).
- Statutory Release (previously termed Mandatory Supervision) Revocation decreased between 1981 (12) and 1992 (4), followed by an increase in 1993 (8) through to 1996 (26%), and then levelling off at approximately 21 and 22 in 1997 and 1998 respectively.
- Provincial/Federal Transfers steadily increased from 1981 (4) to 1990 (14) and declined dramatically to 1994, and remained at an average of zero in subsequent years.
- The category of Other consistently fluctuated at a low number between 1981 and 1998, averaging at 3. The highest points were in 1990 and 1996 (8).

***Most Serious Offence: (1981-1991)***

- There was an increase in Crimes of Violence from 1981 (110) to 1990 (176). In 1991 there was a shift downward (174) which was consistent with the literature that suggests overall crimes of violence in Canada have decreased since the early 1990s (Boe 1997 R-59 Correctional Service Canada).
- Property Crimes fluctuated from 1981 (30) to 1984 (28) and remained stable to 1985. An increase began in 1986 (35) and continued to 1988 (44), followed by a decrease to 1991 (33), which is similar to 1981 (30).
- Drug Offences increased from 1981 (32) to 1985 (36), increasing sharply in 1986 (66), decreasing substantially in 1987 (45) through to 1989 (42), followed by a substantial increase again through to 1991 (67).
- Other Crimes increased, with slight fluctuation, from 1981 (28) to 1991 (37).

- There was an overall increase in sentences of less than 2 years from 1981 (11) to 1991 (15), averaging at 12.
- Two to 5 year sentences notably increased from 1981 (95) to 1998 (190), with minor fluctuations throughout.
- Five to 10 years sentences decreased from 1981 (53) to 1998 (39). There was consistent fluctuation throughout the time period ranging from the low of 39 in 1998 to the high of 67 in 1986.
- There was an overall increase from 1981 (8) to 1998 (20) in the 10 to 15 years category. There was an increase from 1981 (8) to 1983 (14), followed by a decrease to 1985 (6), followed by an increase to 1991 (20), remaining relatively stable through to 1998 (20).
- Acknowledging the extremely small number within the 15 to 20 year sentenced category, there was relative stability between 1981 and 1990, at an average of 2. An increase in 1994 was followed by stability from 1995 to 1998 (4).
- There was relative stability in the 20 and greater category from 1981 to 1998, averaging 1.
- There was a gradual and significant increase in life sentences from 1981 (31) to 1998 (67). There was minor fluctuation, with the peak in 1997 (70) and the low in 1981 (31).

***Time served since last admission: (1981-91 & 1994-98)***

- There was a substantial increase in less than 12 months served from 1981 (76) to 1998 (179).
- Time served between 1 and 2 years increased (with slight fluctuation) from 1982 (36) to 1987 (80). There was relative stability from 1988 (53) to 1991 (55). A notably higher number in 1994 (73) was followed by a decrease trend until 1998 (55).
- Focussing on 2 to 5 years, there was a decrease from 1981 (53) to 1984 (35), followed by an increase until 1988 (62), followed by a decrease in 1989 (56), and plateauing to 1991. This plateau was followed by an increase from 1994 (52) to 1998 (61).
- There was an increase from 1981 (23) to 1990 (51) in 5 or greater areas. This was followed by a decrease to 1998 (26).

***Number of previous commitments: (1981-1998)***

- There was an increase in offenders with No Previous Commitments between 1981 (157) and 1998 (262).
- 1 to 5 Previous Commitments slightly increased from 1981(42) to 1998 (59). There were several fluctuations, with the most prominent a decrease from 1993 (70) to 1994 (36).
- 6 to 9 Previous Commitments was negligible in representation ranging from zero to 2 throughout the 18-year span.
- There were no inmates with 10 Plus Previous Commitments between 1981 to 1998.

***Region of Sentence: (1987-1991)***

- Overall, the Atlantic Region decreased between 1987 (23) and 1991 (17).
- There was a steady increase in the Quebec Region (59 to 80).
- In the Ontario Region, there was a steady increase (72 to 91).
- In the Prairie Region, there was a decrease from 1987 (73) to 1988 (59), followed by an increase trend to 1991 (83).

- There was a steady decrease in the Pacific Region from 1987 (56) to 1991 (36).

Offenders whose region of sentence was Outside Canada increased slightly from 1 in 1987 to 3 in 1991.