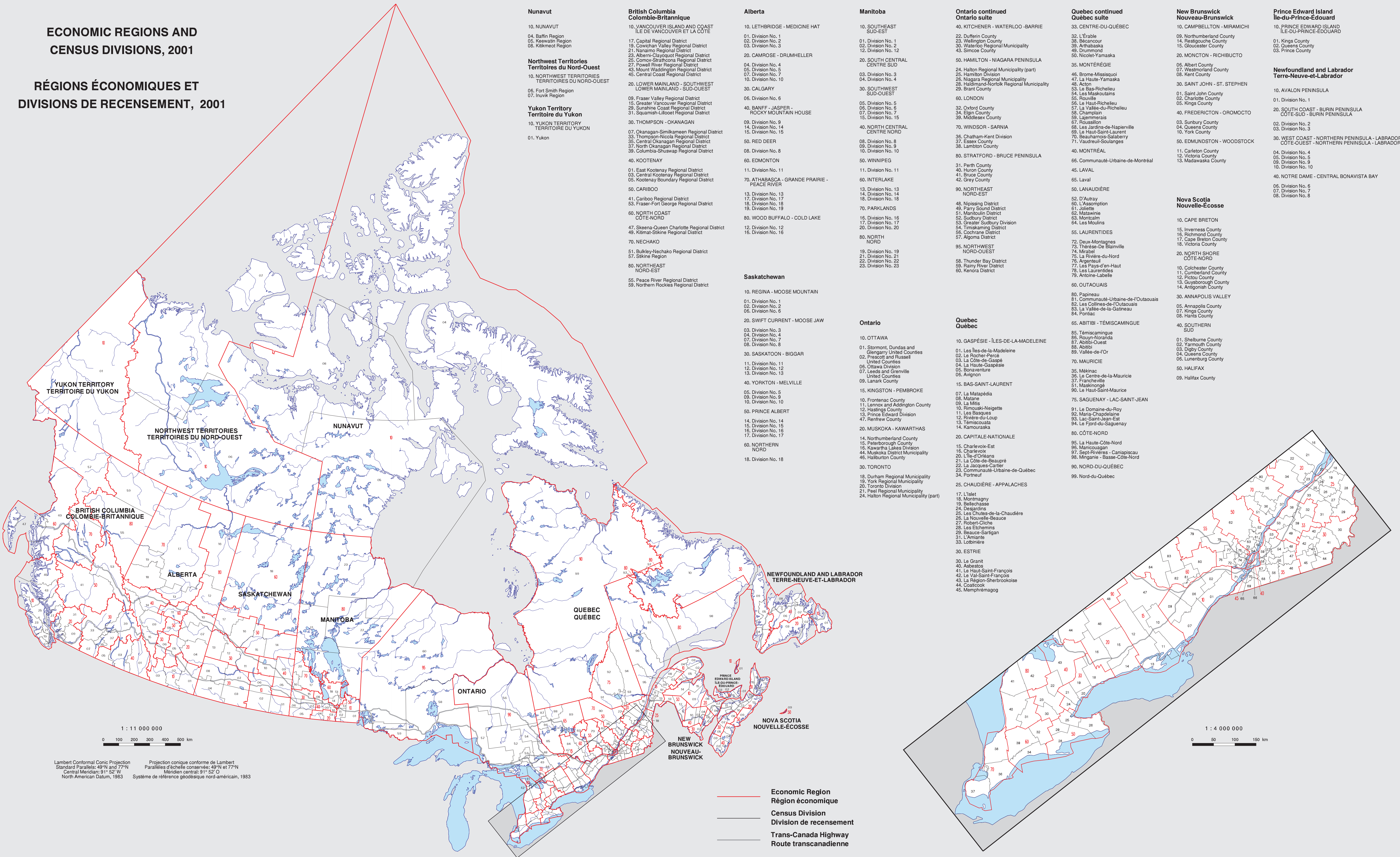


ECONOMIC REGIONS AND CENSUS DIVISIONS, 2001

RÉGIONS ÉCONOMIQUES ET DIVISIONS DE RECENSEMENT, 2001



- Nunavut**
- 10. NUNAVUT
 - 04. Baffin Region
 - 05. Keweenaw Region
 - 08. Kitikmeot Region
- Northwest Territories
Territoires du Nord-Ouest**
- 10. NORTHWEST TERRITORIES
TERRITOIRES DU NORD-OUEST
 - 06. Fort Smith Region
 - 07. Inuvik Region
- Yukon Territory
Territoire du Yukon**
- 10. YUKON TERRITORY
TERRITOIRE DU YUKON
 - 01. Yukon

- British Columbia
Colombie-Britannique**
- 10. VANCOUVER ISLAND AND COAST
ÎLE DE VANCOUVER ET LA CÔTE
 - 17. Capital Regional District
 - 19. Cowichan Valley Regional District
 - 21. Nanaimo Regional District
 - 23. Alberni-Clayoquot Regional District
 - 25. Comox-Strathcona Regional District
 - 27. Powell River Regional District
 - 43. Mount Waddington Regional District
 - 45. Central Coast Regional District
 - 20. LOWER MAINLAND - SOUTHWEST
LOWER MAINLAND - SUD-OUEST
 - 09. Fraser Valley Regional District
 - 15. Greater Vancouver Regional District
 - 29. Sunshine Coast Regional District
 - 31. Squamish-Lillooet Regional District
 - 30. THOMPSON - OKANAGAN
 - 07. Okanagan-Simikameen Regional District
 - 33. Thompson-Nicola Regional District
 - 35. Central Okanagan Regional District
 - 37. North Okanagan Regional District
 - 39. Columbia-Shuswap Regional District
 - 40. KOOTENAY
 - 01. East Kootenay Regional District
 - 03. Central Kootenay Regional District
 - 05. Kootenay Boundary Regional District
 - 50. CARIBOO
 - 41. Cariboo Regional District
 - 53. Fraser-Fort George Regional District
 - 60. NORTH COAST
CÔTE-NORD
 - 47. Skeena-Queen Charlotte Regional District
 - 49. Kamath-Sikine Regional District
 - 70. NECHAKO
 - 51. Bulkley-Alechako Regional District
 - 57. Skeine Region
 - 80. NORTHEAST
NORD-EST
 - 55. Peace River Regional District
 - 59. Northern Rockies Regional District

- Alberta**
- 10. LETHBRIDGE - MEDICINE HAT
 - 01. Division No. 1
 - 02. Division No. 2
 - 03. Division No. 3
 - 20. CAMROSE - DRUMHELLER
 - 04. Division No. 4
 - 05. Division No. 5
 - 07. Division No. 7
 - 10. Division No. 10
 - 30. CALGARY
 - 06. Division No. 6
 - 40. BANFF - JASPER -
ROCKY MOUNTAIN HOUSE
 - 09. Division No. 9
 - 14. Division No. 14
 - 15. Division No. 15
 - 50. RED DEER
 - 08. Division No. 8
 - 60. EDMONTON
 - 11. Division No. 11
 - 70. ATHABASCA - GRANDE PRAIRIE -
PEACE RIVER
 - 13. Division No. 13
 - 17. Division No. 17
 - 18. Division No. 18
 - 19. Division No. 19
 - 80. WOOD BUFFALO - COLD LAKE
 - 12. Division No. 12
 - 16. Division No. 16

- Saskatchewan**
- 10. REGINA - MOOSE MOUNTAIN
 - 01. Division No. 1
 - 02. Division No. 2
 - 06. Division No. 6
 - 20. SWIFT CURRENT - MOOSE JAW
 - 03. Division No. 3
 - 04. Division No. 4
 - 07. Division No. 7
 - 08. Division No. 8
 - 30. SASKATOON - BIGGAR
 - 11. Division No. 11
 - 12. Division No. 12
 - 13. Division No. 13
 - 40. YORKTON - MELVILLE
 - 05. Division No. 5
 - 09. Division No. 9
 - 10. Division No. 10
 - 50. PRINCE ALBERT
 - 14. Division No. 14
 - 15. Division No. 15
 - 16. Division No. 16
 - 17. Division No. 17
 - 60. NORTHERN
NORD
 - 18. Division No. 18

- Manitoba**
- 10. SOUTHEAST
SUD-EST
 - 01. Division No. 1
 - 02. Division No. 2
 - 12. Division No. 12
 - 20. SOUTH CENTRAL
CENTRE SUD
 - 03. Division No. 3
 - 04. Division No. 4
 - 30. SOUTHWEST
SUD-OUEST
 - 05. Division No. 5
 - 06. Division No. 6
 - 07. Division No. 7
 - 15. Division No. 15
 - 40. NORTH CENTRAL
CENTRE NORD
 - 08. Division No. 8
 - 09. Division No. 9
 - 10. Division No. 10
 - 50. WINNIPEG
 - 11. Division No. 11
 - 60. INTERLAKE
 - 90. NORTHEAST
NORD-EST
 - 13. Division No. 13
 - 14. Division No. 14
 - 16. Division No. 16
 - 17. Division No. 17
 - 70. PARKLANDS
 - 15. Division No. 15
 - 16. Division No. 16
 - 20. Division No. 20
 - 80. NORTH
NORD
 - 19. Division No. 19
 - 21. Division No. 21
 - 22. Division No. 22
 - 23. Division No. 23

- Ontario**
- 10. OTTAWA
 - 01. Stormont, Dundas and
Glangary United Counties
 - 02. Prescott and Russell
United Counties
 - 06. Ottawa Division
 - 07. Leeds and Grenville
United Counties
 - 09. Lanark County
 - 15. KINGSTON - PEMBROKE
 - 10. Frontenac County
 - 11. Lennox and Addington County
 - 12. Hastings County
 - 13. Prince Edward Division
 - 47. Renfrew County
 - 20. MUSKOKA - KAWARTHAS
 - 14. Northumberland County
 - 15. Peterborough County
 - 16. Kawartha Lakes Division
 - 44. Muskoka District Municipality
 - 46. Haliburton County
 - 30. TORONTO
 - 18. Durham Regional Municipality
 - 19. York Regional Municipality
 - 20. Toronto Division
 - 21. Peel Regional Municipality
 - 24. Halton Regional Municipality (part)

- Ontario continued
Ontario suite**
- 40. KITCHENER - WATERLOO - BARRIE
 - 22. Dufferin County
 - 23. Wellington County
 - 30. Waterloo Regional Municipality
 - 43. Simcoe County
 - 50. HAMILTON - NIAGARA PENINSULA
 - 24. Halton Regional Municipality (part)
 - 25. Hamilton Division
 - 26. Niagara Regional Municipality
 - 28. Hamilton-Niagara Regional Municipality
 - 29. Brant County
 - 60. LONDON
 - 32. Oxford County
 - 34. Elgin County
 - 39. Middlesex County
 - 70. WINDSOR - SARNIA
 - 35. Chatham-Kent Division
 - 37. Essex County
 - 38. Lambton County
 - 80. STRATFORD - BRUCE PENINSULA
 - 31. Perth County
 - 40. Huron County
 - 41. Bruce County
 - 42. Grey County
 - 90. NORTHEAST
NORD-EST
 - 48. Nipissing District
 - 49. Parry Sound District
 - 51. Manitoulin District
 - 52. Sudbury District
 - 53. Greater Sudbury Division
 - 54. Timiskaming District
 - 57. Algoma District
 - 95. NORTHWEST
NORD-OUEST
 - 58. Thunder Bay District
 - 59. Rainy River District
 - 60. Kenora District

- Quebec
Québec**
- 10. GASPÉSIE - ÎLES-DE-LA-MADELEINE
 - 01. Les Îles-de-la-Madeleine
 - 02. Le Rocher-Percé
 - 03. La Côte-de-Gaspésie
 - 04. La Haute-Gaspésie
 - 05. Bonaventure
 - 06. Avignon
 - 15. BAS-SAINT-LAURENT
 - 07. La Matapédia
 - 08. Matane
 - 09. La Mitis
 - 10. Rimouski-Neigette
 - 11. Les Basques
 - 12. Rivière-du-Loup
 - 13. Témiscouata
 - 14. Kamouraska
 - 20. CAPITALE-NATIONALE
 - 15. Charlevoix-Est
 - 16. Charlevoix
 - 20. Le Île-d'Orléans
 - 21. La Côte-de-Beaupré
 - 22. La Jacques-Cartier
 - 23. Communauté-Urbaine-de-Québec
 - 34. Portneuf
 - 25. CHAUDIÈRE - APPALACHES
 - 17. L'Islet
 - 18. Montmagny
 - 19. Bellechasse
 - 24. Desjardins
 - 25. Les Chutes-de-la-Chaudière
 - 26. La Nouvelle-Beauce
 - 27. Robert-Cliche
 - 28. Les Etchemins
 - 29. Beauce-Sartigan
 - 31. L'Armatée
 - 33. Lotbinière
 - 30. ESTRIE
 - 30. La Granit
 - 40. Asbestos
 - 41. Le Haut-Saint-François
 - 42. Le Val-Saint-François
 - 43. La Région-Sherbrookoise
 - 44. Coaticook
 - 45. Memphrémagog

- Quebec continued
Québec suite**
- 33. CENTRE-DU-QUÉBEC
 - 32. L'Érable
 - 38. Bécancour
 - 39. Arthabaska
 - 49. Drummond
 - 50. Nicolet-Yamaska
 - 35. MONTRÉAL
 - 46. Brome-Missisquoi
 - 47. La Haute-Yamaska
 - 48. Acton
 - 53. Le Bas-Richelieu
 - 54. Les Maskouains
 - 55. Rouville
 - 56. Le Haut-Richelieu
 - 57. La Vallée-du-Richelieu
 - 58. Champlain
 - 59. La Jacques-Cartier
 - 67. Roussillon
 - 68. Les Jardins-de-Napierville
 - 69. Le Haut-Saint-Laurent
 - 70. Beauharnois-Salaberry
 - 71. Vaudreuil-Soulanges
 - 40. MONTRÉAL
 - 66. Communauté-Urbaine-de-Montréal
 - 45. LAVAL
 - 65. Laval
 - 50. LANAUDIÈRE
 - 52. D'Autray
 - 61. L'Assomption
 - 61. Joliette
 - 62. Matane
 - 63. Montcalm
 - 64. Les Moulins
 - 55. LAURENTIDES
 - 72. Deux-Montagnes
 - 73. Thérèse-De Blainville
 - 74. Mirabel
 - 75. La Rivière-du-Nord
 - 76. Argenteuil
 - 77. Les Pays-d'en-Haut
 - 78. Les Laurentides
 - 79. Antoine-Labellé
 - 60. OUTAOUAIS
 - 80. Papineau
 - 81. Communauté-Urbaine-de-Outaouais
 - 82. Les Collines-de-Outaouais
 - 83. La Vallée-de-la-Gatineau
 - 84. Pontiac
 - 65. ABITIBI - TÉMISCAMINGUE
 - 85. Témiscamingue
 - 86. Rouyn-Noranda
 - 87. Abitibi-Ouest
 - 88. Abitibi
 - 89. Vallée-de-l'Or
 - 70. MAURICIE
 - 35. Mûkinac
 - 36. Le Centre-de-la-Mauricie
 - 37. Francheville
 - 51. Maskinongé
 - 90. Le Haut-Saint-Maurice
 - 75. SAGUENAY - LAC-SAINT-JEAN
 - 91. Le Domaine-du-Roy
 - 92. Maria-Chapdelaine
 - 93. Lac-Saint-Jean-Est
 - 94. Le Fjord-du-Saguenay
 - 80. CÔTE-NORD
 - 95. La Haute-Côte-Nord
 - 96. Manicouagan
 - 97. Sept-Rivières - Caniapiscau
 - 98. Minganie - Basse-Côte-Nord
 - 90. NORD-DU-QUÉBEC
 - 99. Nord-du-Québec

- New Brunswick
Nouveau-Brunswick**
- 10. CAMPBELLTON - MIRAMICHI
 - 09. Northumberland County
 - 14. Saint-John County
 - 15. Gloucester County
 - 20. MONCTON - RICHIBUCTO
 - 06. Albert County
 - 07. Westmorland County
 - 08. Kent County
 - 30. SAINT-JOHN - ST. STEPHEN
 - 01. Saint John County
 - 02. Charlotte County
 - 05. Kings County
 - 40. FREDERICTON - OROMOCTO
 - 03. Sunbury County
 - 04. Queens County
 - 10. York County
 - 50. EDMUNDSTON - WOODSTOCK
 - 11. Carleton County
 - 12. Victoria County
 - 13. Madawaska County

- Prince Edward Island
Île-du-Prince-Édouard**
- 10. PRINCE EDWARD ISLAND
ÎLE-DU-PRINCE-ÉDOUARD
 - 01. Kings County
 - 02. Queens County
 - 03. Piquet County
- Newfoundland and Labrador
Terre-Neuve-et-Labrador**
- 10. AVALON PENINSULA
 - 01. Division No. 1
 - 03. Division No. 3
 - 02. Division No. 2
 - 04. Division No. 4
 - 05. Division No. 5
 - 09. Division No. 9
 - 10. Division No. 10
 - 40. NOTRE DAME - CENTRAL BONAVISTA BAY
 - 05. Division No. 6
 - 07. Division No. 7
 - 08. Division No. 8

- Nova Scotia
Nouvelle-Écosse**
- 10. CAPE BRETON
 - 15. Inverness County
 - 16. Richmond County
 - 17. Cape Breton County
 - 18. Victoria County
 - 20. NORTH SHORE
CÔTE-NORD
 - 10. Colchester County
 - 11. Lunenburg County
 - 12. Pictou County
 - 13. Guysborough County
 - 14. Antigonish County
 - 30. ANNAPOLIS VALLEY
 - 05. Annapolis County
 - 07. Kings County
 - 08. Hants County
 - 40. SOUTHERN
SUD
 - 01. Shelburne County
 - 02. Yarmouth County
 - 03. Digby County
 - 04. Queens County
 - 06. Lunenburg County
 - 50. HALIFAX
 - 09. Halifax County

1 : 11 000 000
0 100 200 300 400 500 km

Lambert Conformal Conic Projection
Standard Parallels: 49°N and 77°N
Central Meridian: 81° 52' W
North American Datum, 1983

Projection conique conforme de Lambert
Parallèles d'échelle conservées: 49°N et 77°N
Méridien central: 81° 52' O
Système de référence géodésique nord-américain, 1983

1 : 4 000 000
0 50 100 150 km

— Economic Region
Région économique
— Census Division
Division de recensement
— Trans-Canada Highway
Route transcanadienne