

Table 1/Tableau 1

Respiratory Virus Detections/Isolations for the week ending October 9, 2004 (Reporting Week 200441)
 Détection/isolement de virus des voies respiratoires pour la semaine se terminant le 9 octobre 2004 (Code hebdomadaire 200441)

Reporting Laboratory Laboratoire rapporteur	Flu/Grippe Test	Flu/Grippe A Pos.	Flu/Grippe B Pos.	R.S.V. Test	R.S.V. Pos.	PIV Test	PIV 1 Pos.	PIV 2 Pos.	PIV 3 Pos.	PIV 4 Pos.	Other/Autre PIV Pos.	Adeno Test	Adeno Pos.
Nfld./T.-N.	7	0	0	8	1	1	0	0	0	0	0	1	0
P.E.I./Î.-P.-É.	2	0	0	2	0	2	0	0	0	0	0	2	0
N.S./N.-É.	13	0	0	13	0	13	0	0	0	0	0	13	0
N.B./N.-B.	-	-	-	-	-	-	-	-	-	-	-	-	-
Atlantic/Atlantique	22	0	0	23	1	16	0	0	0	0	0	16	0
Région Nord-Est	0	0	0	6	0	0	0	0	0	0	0	0	0
Québec-Chaudière-Appalaches	27	0	0	40	0	27	0	0	0	0	0	31	3
Centre-du-Québec	4	0	0	3	0	2	0	0	0	0	0	2	0
Montréal-Laval	82	0	0	104	1	85	1	0	1	0	0	84	5
Ouest du Québec	0	0	0	2	0	0	0	0	0	0	0	0	0
Montérégie	0	0	0	1	0	0	0	0	0	0	0	0	0
Province of/de Québec	113	0	0	156	1	114	1	0	1	0	0	117	8
Ottawa P.H.L.	-	-	-	-	-	-	-	-	-	-	-	-	-
CHEO/HEEO - Ottawa	-	-	-	-	-	-	-	-	-	-	-	-	-
Kingston	-	-	-	-	-	-	-	-	-	-	-	-	-
Toronto Medical Laboratory	19	0	0	19	0	19	0	0	0	0	0	19	0
C.P.H.L. - Toronto	160	0	0	174	0	140	0	0	0	0	0	140	0
Sick Kids/Hospital - Toronto	0	1	0	53	2	53	0	0	0	0	0	53	0
Sunnybrook & Women's College HSC	14	0	0	14	0	14	0	0	0	0	0	14	0
Sault Ste. Marie	3	0	0	3	0	3	0	0	0	0	0	3	0
Timmins	-	-	-	-	-	-	-	-	-	-	-	-	-
St. Joseph's - London	6	0	0	6	0	6	0	0	0	0	0	6	0
London P.H.L.	42	0	0	42	0	42	0	0	0	0	0	42	0
Orillia P.H.L.	-	-	-	-	-	-	-	-	-	-	-	-	-
Windsor	11	0	0	11	0	11	0	0	0	0	0	11	0
Thunder Bay	3	0	0	0	0	3	0	0	0	0	0	3	0
Sudbury P.H.L.	-	-	-	-	-	-	-	-	-	-	-	-	-
Hamilton P.H.L.	-	-	-	-	-	-	-	-	-	-	-	-	-
Peterborough P.H.L.	7	0	0	7	0	7	0	1	0	0	0	7	0
Province of/de l'Ontario	265	1	0	329	2	298	0	1	0	0	0	298	0
Manitoba	36	0	0	38	0	36	0	0	2	0	0	36	1
Regina	63	0	0	63	0	63	0	1	0	0	0	63	0
Saskatoon	11	0	0	11	0	11	0	0	0	0	0	11	0
Province of/de la Saskatchewan	74	0	0	74	0	74	0	1	0	0	0	74	0
Calgary	56	3	0	56	0	56	0	0	0	0	0	56	3
Edmonton	158	0	0	178	0	150	0	0	0	0	2	111	7
Province of/de l'Alberta	214	3	0	234	0	206	0	0	0	0	2	167	10
Prairies	324	3	0	346	0	316	0	1	2	0	2	277	11
Vancouver, B.C./C.-B.	52	0	0	52	0	52	0	0	0	0	0	52	2
CANADA	776	4	0	906	4	796	1	2	3	0	2	760	21

Also available at: <http://www.phac-aspc.gc.ca/bid-bmi/dsd-dsm/rvdi-divr/index-html>

Aussi disponible sur le site: http://www.phac-aspc.gc.ca/bid-bmi/dsd-dsm/rvdi-divr/index_f.html

Table 2/Tableau 2

Respiratory Virus Detections/Isolations for the period August 22, 2004 - October 9, 2004
 Détection/isolement de virus des voies respiratoires pour la période du 22 août 2004 - 9 octobre 2004
 (Reporting Weeks 200435 -200441/Code hebdomadaire 200435-200441)

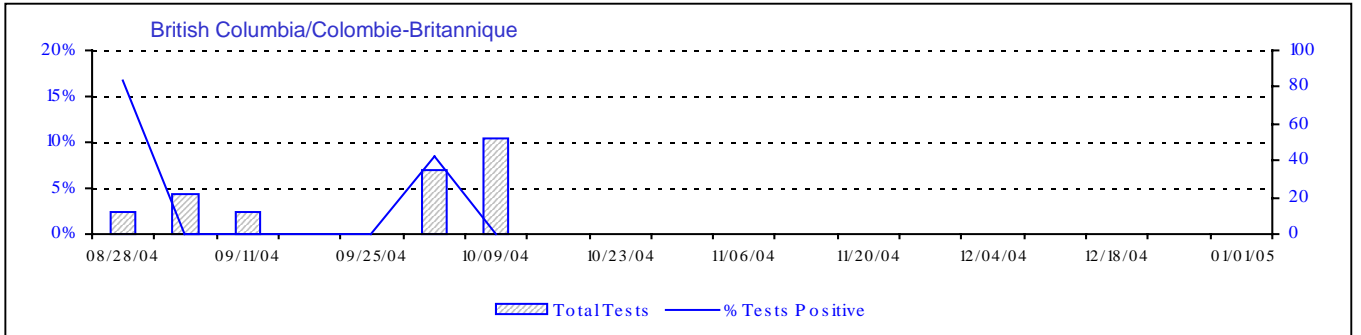
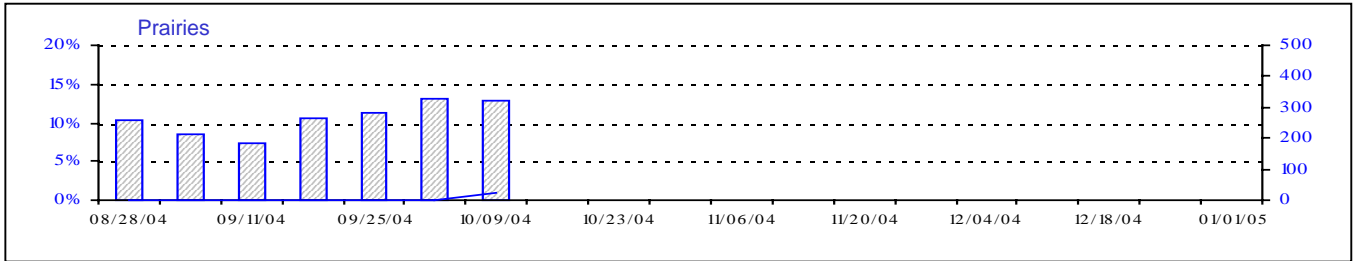
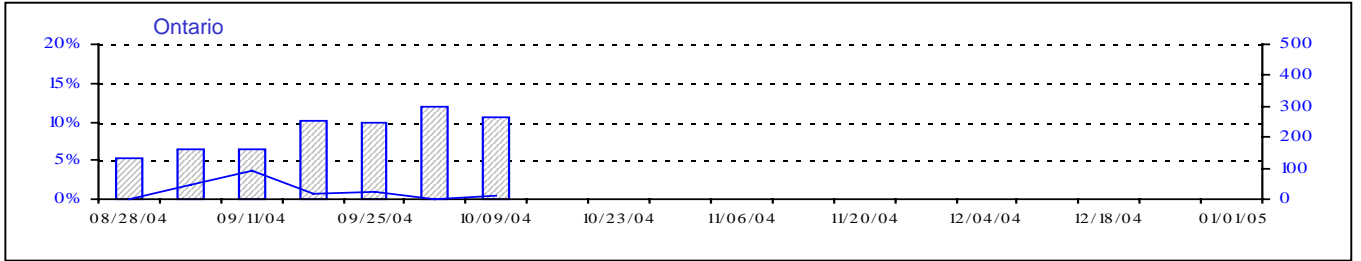
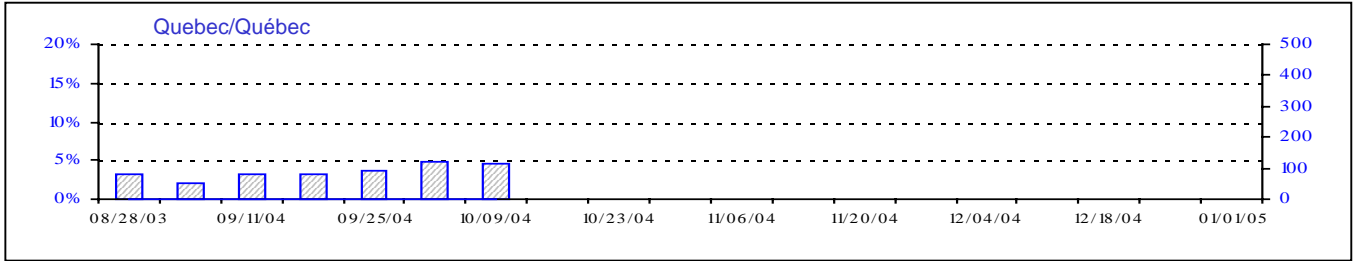
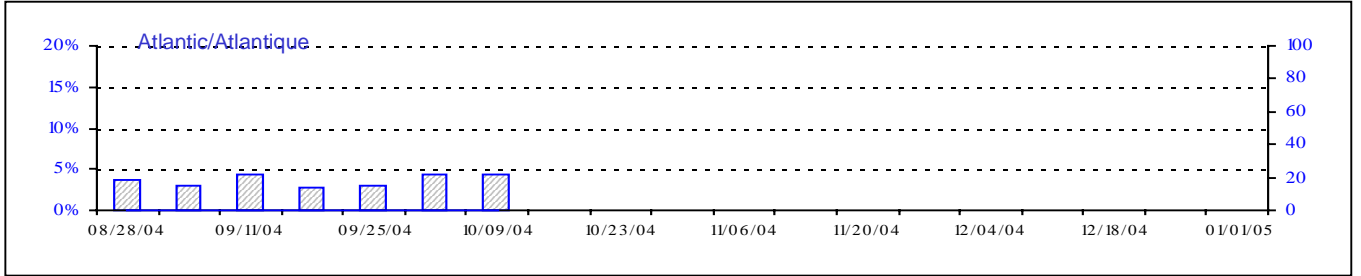
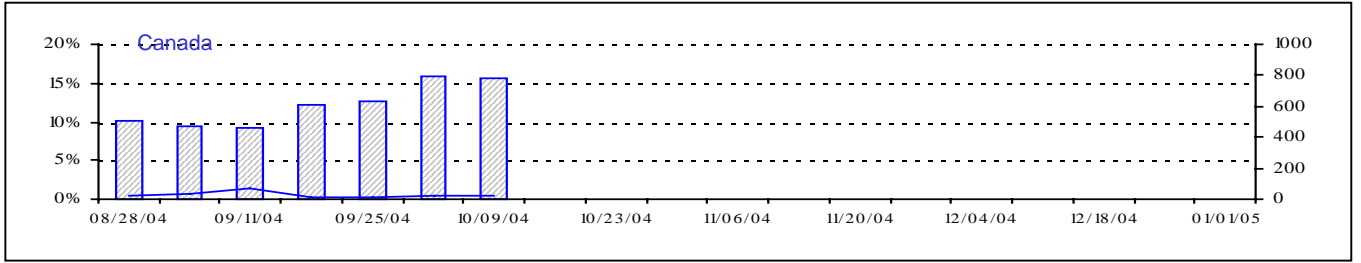
Reporting Laboratory Laboratoire rapporteur	Flu/Grippe Test	Flu/Grippe A Pos.	Flu/Grippe B Pos.	R.S.V. Test	R.S.V. Pos.	PIV Test	PIV 1 Pos.	PIV 2 Pos.	PIV 3 Pos.	PIV 4 Pos.	Other/Autre PIV Pos.	Adeno Test	Adeno Pos.
Nfld./T.-N.	26	0	0	33	2	17	0	0	0	0	0	17	0
P.E.I./Î.-P.-É.	2	0	0	3	0	2	0	0	0	0	0	2	0
N.S./N.-É.	42	0	0	42	0	42	0	0	1	0	0	42	1
N.B./N.-B.	58	0	0	48	0	42	0	0	0	0	0	42	2
Atlantic/Atlantique	128	0	0	126	2	103	0	0	1	0	0	103	3
Région Nord-Est	8	0	0	33	1	0	0	0	0	0	0	0	0
Québec-Chaudière-Appalaches	153	0	0	175	0	129	0	0	0	0	0	159	8
Centre-du-Québec	17	0	0	28	0	22	0	0	0	0	0	22	0
Montréal-Laval	441	0	0	540	8	504	3	0	1	0	0	503	20
Ouest du Québec	3	0	0	10	1	0	0	0	0	0	0	0	0
Montréal	1	0	0	8	1	0	0	0	0	0	0	0	0
Province of/de Québec	623	0	0	794	11	655	3	0	1	0	0	684	28
Ottawa P.H.L.	14	0	0	4	0	0	0	0	0	0	0	0	0
CHEO/HEEO - Ottawa	135	9	0	135	0	135	0	0	0	0	0	135	2
Kingston	63	1	1	63	0	63	0	0	1	0	0	63	0
Toronto Medical Laboratory	247	0	0	220	5	217	0	0	0	0	0	189	0
C.P.H.L. - Toronto	561	1	1	583	3	500	0	0	5	1	0	500	4
Sick Kids' Hospital - Toronto	0	1	0	225	3	428	2	0	1	0	0	428	3
Sunnybrook & Women's College HSC	45	0	0	45	0	45	0	0	0	0	0	45	0
Sault Ste. Marie	9	0	0	9	0	9	0	0	0	0	0	9	0
Timmins	12	0	0	12	0	12	0	0	0	0	0	12	0
St.Joseph's-London	37	0	0	37	0	37	0	0	0	0	0	37	1
London P.H.L.	165	0	0	165	0	165	0	0	0	0	0	165	0
Orillia P.H.L.	50	0	0	50	0	50	0	0	0	0	0	50	3
Windsor	72	0	0	72	0	68	0	0	0	0	0	68	0
Thunder Bay	26	0	0	13	0	26	0	0	1	0	0	26	0
Sudbury P.H.L.	14	0	0	14	0	14	0	0	0	0	0	14	0
Hamilton P.H.L.	28	0	0	28	0	0	0	0	0	0	0	0	0
Peterborough P.H.L.	36	0	0	36	0	36	0	1	0	0	0	36	0
Province of/de l'Ontario	1514	12	2	1711	11	1805	2	1	8	1	0	1777	13
Manitoba	252	0	0	266	1	251	0	0	4	0	0	251	6
Regina	381	0	0	381	3	381	0	7	0	0	0	381	5
Saskatoon	77	0	0	62	0	77	0	0	0	0	3	77	1
Province of/de la Saskatchewan	458	0	0	443	3	458	0	7	0	0	3	458	6
Calgary	250	3	0	250	0	269	0	0	0	0	7	243	10
Edmonton	898	0	0	980	0	862	0	0	0	0	7	628	18
Province of/de l'Alberta	1148	3	0	1230	0	1131	0	0	0	0	14	871	28
Prairies	1858	3	0	1939	4	1840	0	7	4	0	17	1580	40
Vancouver, B.C./C.-B.	133	5	0	133	3	133	1	0	0	0	0	133	2
CANADA	4256	20	2	4703	31	4536	6	8	14	1	17	4277	86

Also available at: <http://www.phac-aspc.gc.ca/bid-bmi/dsd-dsm/rvdi-divr/index.html>

Aussi disponible sur le site: http://www.phac-aspc.gc.ca/bid-bmi/dsd-dsm/rvdi-divr/index_f.html

Positive Influenza Tests (%) in Canada by Region by Week of Report

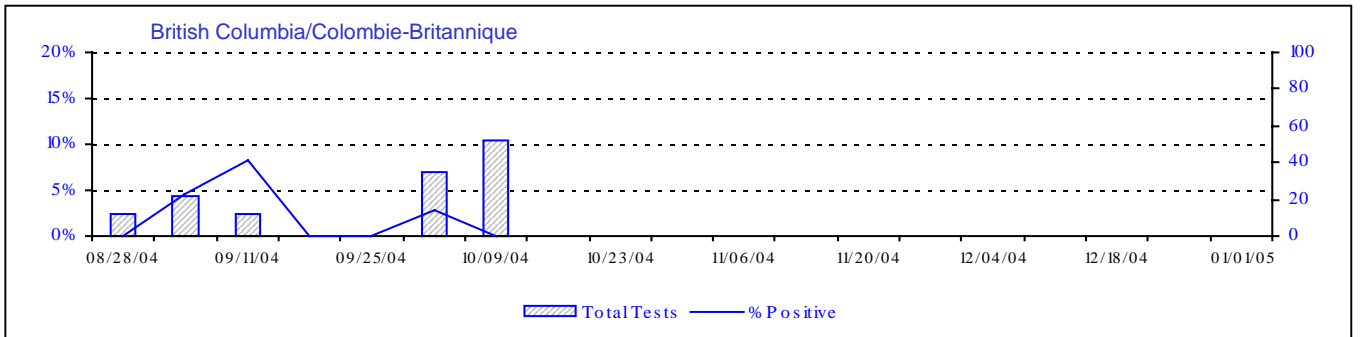
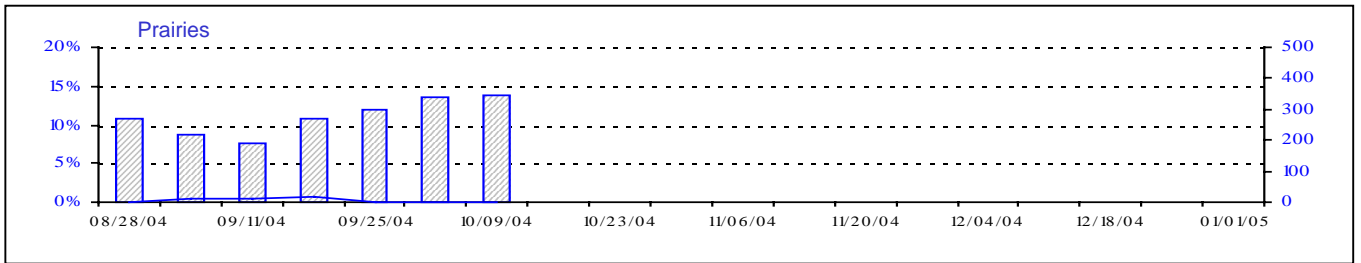
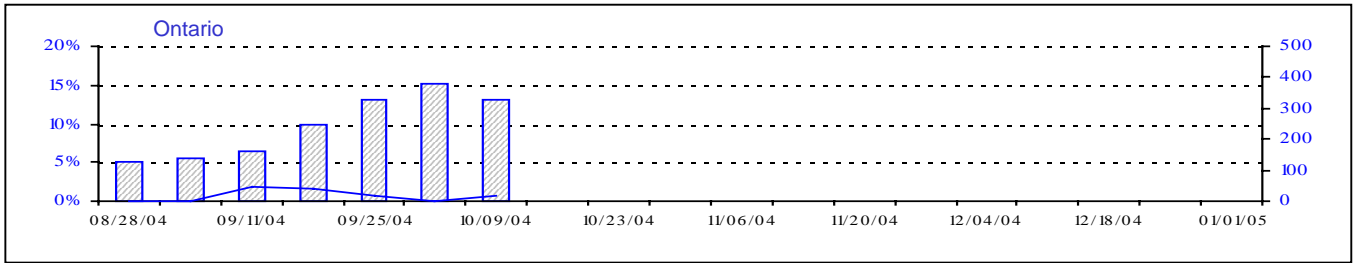
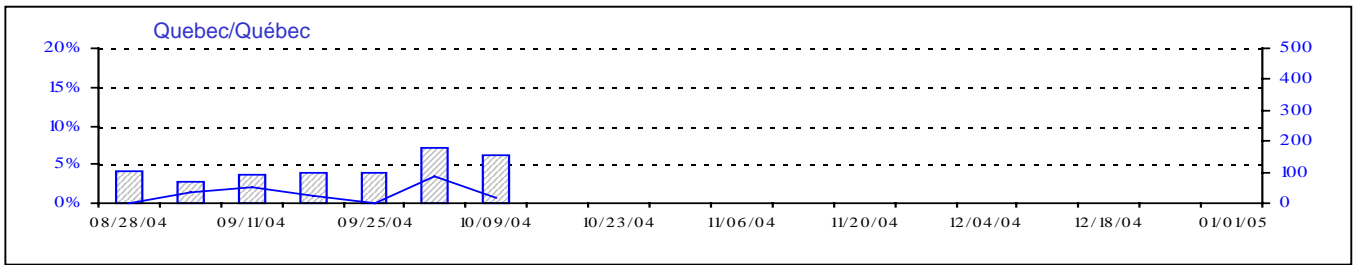
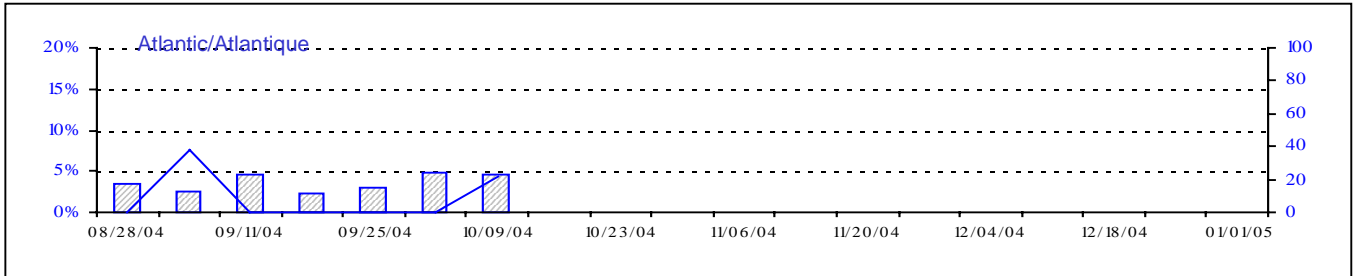
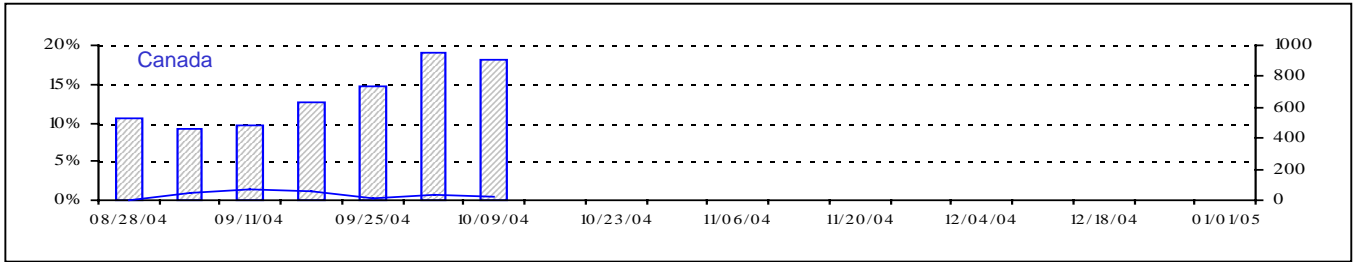
Détection du virus grippal au Canada, tests positifs (%) par région par semaine de déclaration



Total Tests Total

TotalTests
 — % Tests Positive

Positive RSV Tests (%) in Canada by Region by Week of Report
 Détection du virus respiratoire syncytial au Canada, tests positifs (%) par région
 par semaine de déclaration

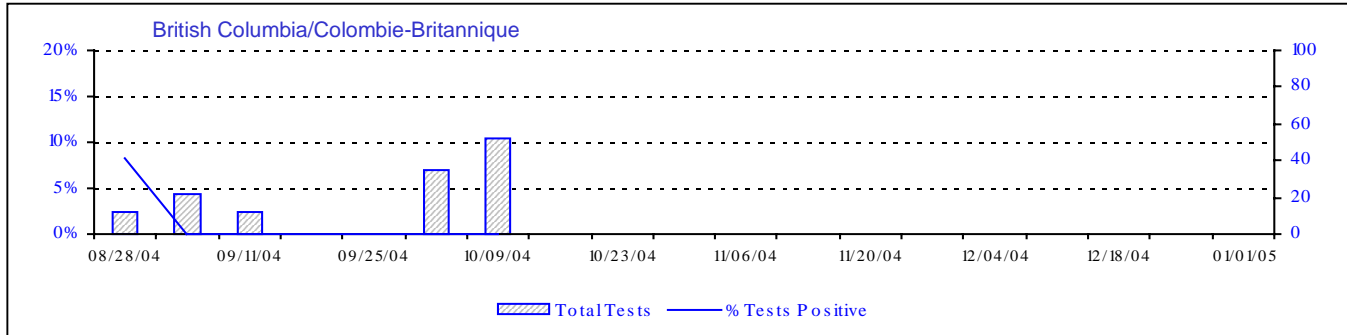
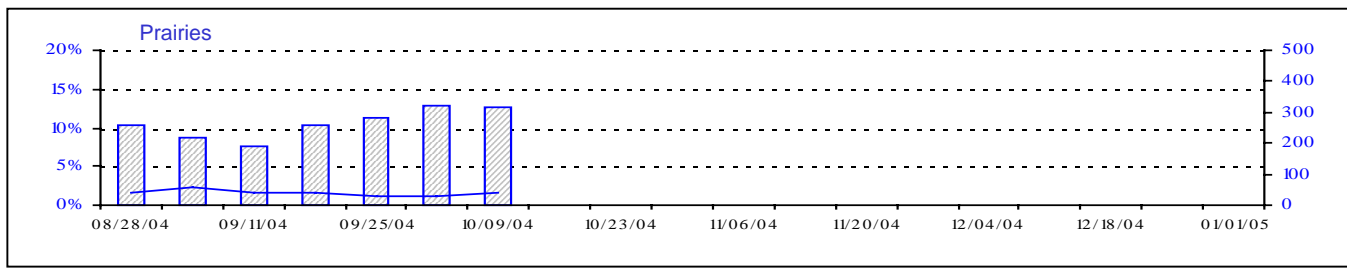
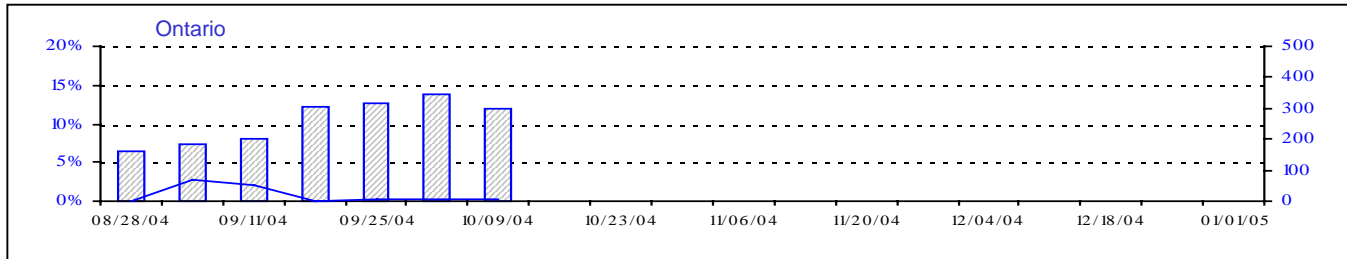
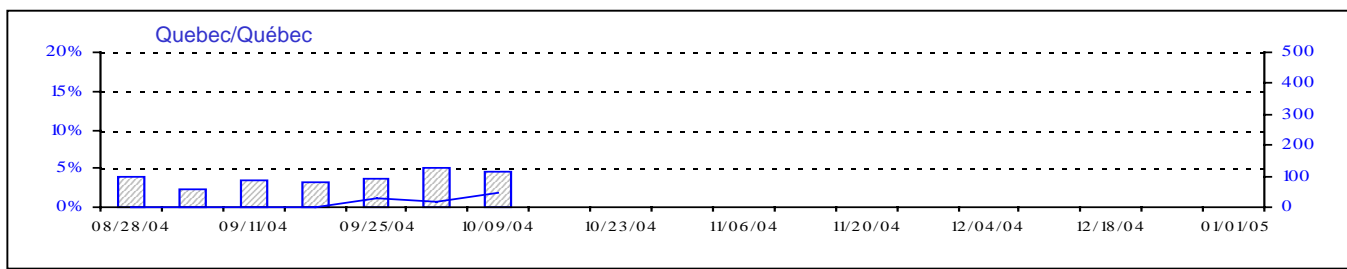
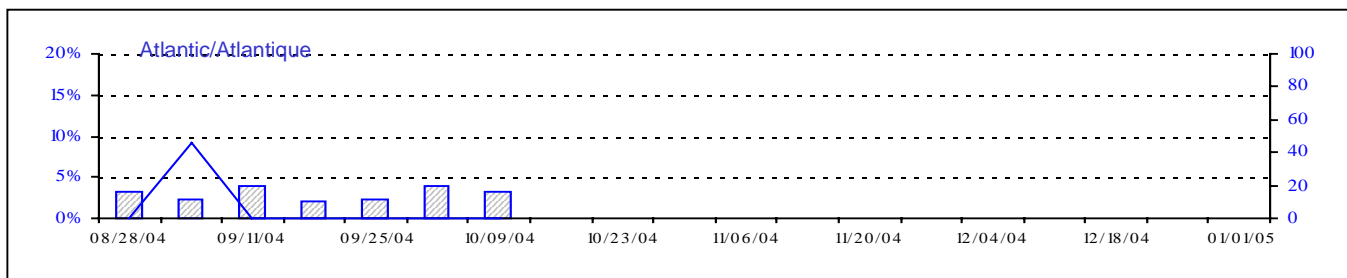
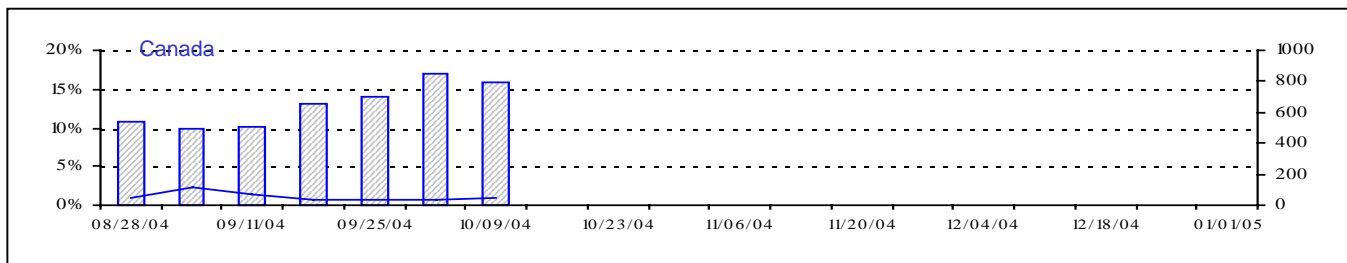


Total Tests Total

▨ Total Tests — % Positive

Positive Parainfluenza Tests (%) in Canada by Region by Week of Report

Détection du virus parainfluenza au Canada, tests positifs (%) par région par semaine de déclaration



Total Tests
 % Tests Positive

Total Tests Total

Positive Adenovirus Tests (%) in Canada by Region by Week of Report

Détection des adénovirus au Canada, tests positifs (%) par région par semaine de déclaration

