

Table 1/Tableau 1

Respiratory Virus Detections/Isolations for the week ending December 25, 2004 (Reporting Week 200452)  
 Détection/isolement de virus des voies respiratoires pour la semaine se terminant le 25 décembre 2004(Code hebdomadaire 200452)

Reporting Laboratory Laboratoire rapporteur	Flu/Grippe Test	Flu/Grippe A Pos.	Flu/Grippe B Pos.	R.S.V. Test	R.S.V. Pos.	PIV Test	PIV 1 Pos.	PIV 2 Pos.	PIV 3 Pos.	PIV 4 Pos.	Other/Autre PIV Pos.	Adeno Test	Adeno Pos.
Nfld./T.-N.	4	0	0	1	0	0	0	0	0	0	0	0	0
P.E.I./ Î.-P.-É.	5	0	0	5	0	5	0	0	0	0	0	5	0
N.S./N.-É.	-	-	-	-	-	-	-	-	-	-	-	-	-
N.B./N.-B.	31	1	0	22	0	20	0	0	0	0	0	20	0
Atlantic/Atlantique	40	1	0	28	0	25	0	0	0	0	0	25	0
Région Nord-Est	121	48	0	6	1	0	0	0	0	0	0	0	0
Québec-Chaudière-Appalaches	251	69	0	121	12	79	0	0	0	0	0	101	7
Centre-du-Québec	86	20	0	37	6	121	0	0	1	0	0	12	0
Montréal-Laval	194	18	1	247	62	167	2	0	1	0	0	182	15
Ouest du Québec	89	18	0	22	9	0	0	0	0	0	0	0	0
Montérégie	68	12	0	33	8	0	0	0	0	0	0	0	0
Province of/de Québec	809	185	1	466	98	367	2	0	2	0	0	295	22
Ottawa P.H.L.	-	-	-	-	-	-	-	-	-	-	-	-	-
CHEO/HEEO - Ottawa	-	-	-	-	-	-	-	-	-	-	-	-	-
Kingston	-	-	-	-	-	-	-	-	-	-	-	-	-
Toronto Medical Laboratory	36	0	0	36	0	36	0	0	0	0	0	36	0
C.P.H.L. - Toronto	-	-	-	-	-	-	-	-	-	-	-	-	-
Sick Kids'Hospital - Toronto	131	7	0	131	28	131	0	0	0	0	0	131	5
Sunnybrook & Women's College HSC	16	2	0	16	0	16	0	0	0	0	0	16	0
Sault Ste. Marie	6	0	0	6	0	6	0	0	0	0	0	6	0
Timmins	15	0	0	15	0	15	0	0	0	0	0	15	0
St. Joseph's - London	-	-	-	-	-	-	-	-	-	-	-	-	-
London P.H.L.	34	0	0	34	3	34	0	0	2	0	0	34	1
Orillia P.H.L.	-	-	-	-	-	-	-	-	-	-	-	-	-
Windsor	-	-	-	-	-	-	-	-	-	-	-	-	-
Thunder Bay	-	-	-	-	-	-	-	-	-	-	-	-	-
Sudbury P.H.L.	10	0	0	10	1	10	0	0	0	0	0	10	0
Hamilton P.H.L.	4	1	0	4	0	0	0	0	0	0	0	0	0
Peterborough P.H.L.	13	6	0	13	0	13	1	0	0	0	0	13	0
Province of/de l'Ontario	265	16	0	265	32	261	1	0	2	0	0	261	6
Manitoba	52	2	0	60	18	50	0	0	0	0	0	50	4
Regina	68	7	1	68	3	68	0	0	0	0	0	68	8
Saskatoon	10	1	0	8	0	10	0	0	0	0	1	10	2
Province of/de la Saskatchewan	78	8	1	76	3	78	0	0	0	0	1	78	10
Calgary	78	12	0	78	1	78	0	0	0	0	1	61	0
Edmonton	396	54	0	339	12	309	0	0	0	0	6	217	13
Province of/de l'Alberta	474	66	0	417	13	387	0	0	0	0	7	278	13
Prairies	604	76	1	553	34	515	0	0	0	0	8	406	27
Vancouver, B.C./C.-B.	-	-	-	-	-	-	-	-	-	-	-	-	-
CANADA	1718	278	2	1312	164	1168	3	0	4	0	8	987	55

Also available at: <http://www.phac-aspc.gc.ca/bid-bmi/dsd-dsm/rvdi-divr/index-html>

Aussi disponible sur le site: [http://www.phac-aspc.gc.ca/bid-bmi/dsd-dsm/rvdi-divr/index\\_f.html](http://www.phac-aspc.gc.ca/bid-bmi/dsd-dsm/rvdi-divr/index_f.html)

Table 2/Tableau 2

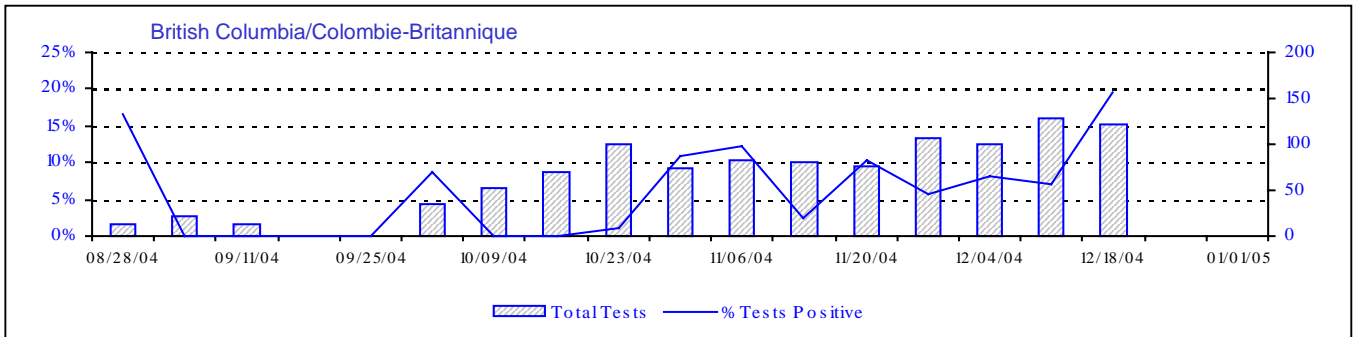
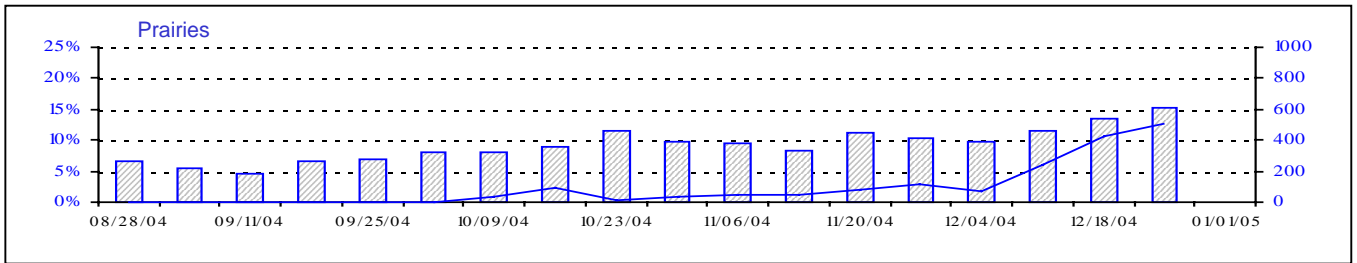
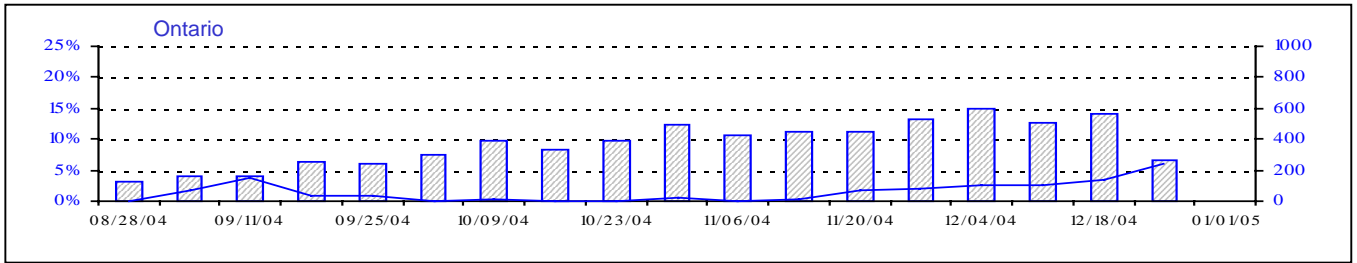
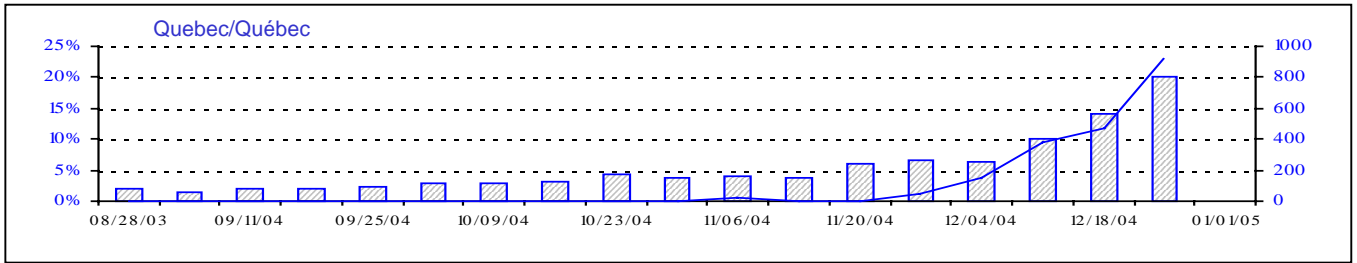
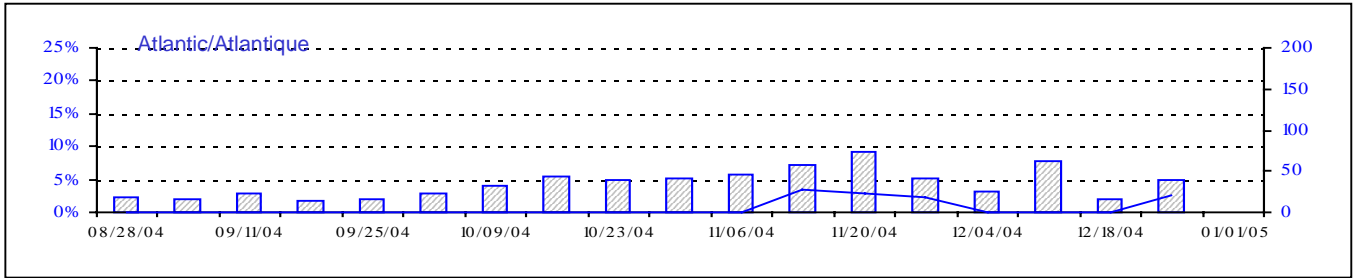
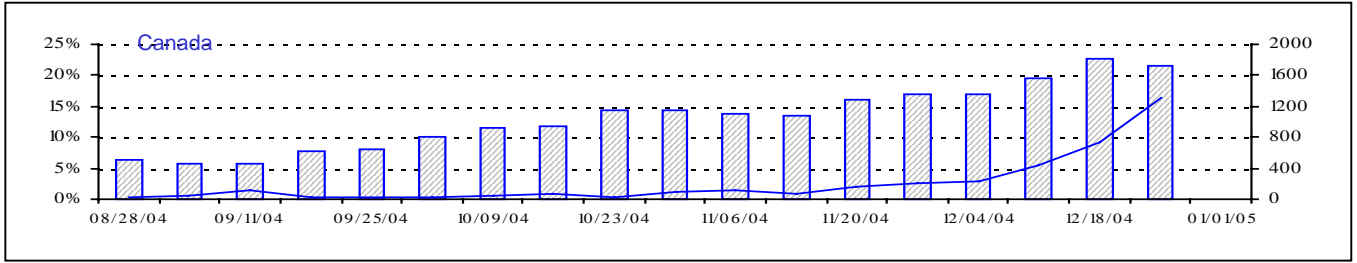
Respiratory Virus Detections/Isolations for the period August 22, 2004 - December 25, 2004  
 Détection/isolement de virus des voies respiratoires pour la période du 22 août 2004 - 25 décembre 2004  
 (Reporting Weeks 200435 -200452/Code hebdomadaire 200435-200452)

Reporting Laboratory Laboratoire rapporteur	Flu/Grippe Test	Flu/Grippe A Pos.	Flu/Grippe B Pos.	R.S.V. Test	R.S.V. Pos.	PIV Test	PIV 1 Pos.	PIV 2 Pos.	PIV 3 Pos.	PIV 4 Pos.	Other/Autre PIV Pos.	Adeno Test	Adeno Pos.
Nfld./T.-N.	130	0	0	112	4	34	0	0	0	0	0	36	0
P.E.I./Î.-P.-É.	18	0	0	29	0	18	0	0	0	0	0	18	0
N.S./N.-É.	182	4	1	182	0	182	0	0	1	0	0	182	3
N.B./N.-B.	294	1	0	226	0	196	0	0	0	0	0	196	14
Atlantic/Atlantique	624	5	1	549	4	430	0	0	1	0	0	432	17
Région Nord-Est	288	67	1	122	7	0	0	0	0	0	0	0	0
Québec-Chaudière-Appalaches	979	128	2	909	24	618	1	0	0	3	0	801	73
Centre-du-Québec	381	43	0	221	10	209	0	0	1	0	0	97	4
Montréal-Laval	1919	23	1	2642	257	2177	13	1	7	9	0	2200	133
Ouest du Québec	206	22	0	133	30	0	0	0	0	0	0	0	0
Montréal	137	16	0	112	23	0	0	0	0	0	0	0	0
Province of/de Québec	3910	299	4	4139	351	3004	14	1	8	12	0	3098	210
Ottawa P.H.L.	42	9	0	6	0	0	0	0	0	0	0	0	0
CHEO/HEEO - Ottawa	542	18	1	542	25	492	0	0	0	0	0	542	4
Kingston	365	27	1	365	21	365	0	1	1	0	0	365	1
Toronto Medical Laboratory	727	0	0	700	8	697	0	0	0	0	0	609	0
C.P.H.L. - Toronto	1912	14	2	2047	31	1751	24	3	9	5	2	1751	24
Sick Kids' Hospital - Toronto	1097	14	0	1322	88	1525	12	1	5	0	0	1525	23
Sunnybrook & Women's College HSC	99	2	0	99	0	99	0	0	0	0	0	99	0
Sault Ste. Marie	37	0	0	37	0	37	0	1	0	0	0	37	0
Timmins	124	0	0	124	0	124	0	0	0	0	0	124	2
St.Joseph's-London	141	0	0	141	0	141	0	1	4	0	0	141	3
London P.H.L.	589	1	0	589	5	589	0	1	3	0	0	589	16
Orillia P.H.L.	282	1	0	282	1	282	0	2	0	1	0	282	11
Windsor	158	0	0	155	0	135	0	0	0	0	0	135	0
Thunder Bay	76	0	0	34	0	76	0	0	1	0	0	76	0
Sudbury P.H.L.	105	0	0	105	3	105	0	0	0	0	0	105	0
Hamilton P.H.L.	131	2	0	101	0	0	0	0	0	0	0	0	0
Peterborough P.H.L.	213	9	0	213	3	213	1	2	0	0	0	213	4
Province of/de l'Ontario	6640	97	4	6862	185	6631	37	12	23	6	2	6593	88
Manitoba	755	4	0	796	34	736	1	1	16	0	0	736	31
Regina	1258	31	1	1258	8	1258	0	25	0	6	1	1258	57
Saskatoon	223	6	0	168	1	223	0	0	0	0	9	223	6
Province of/de la Saskatchewan	1481	37	1	1426	9	1481	0	25	0	6	10	1481	63
Calgary	873	45	0	890	2	893	0	0	0	0	15	780	36
Edmonton	3522	126	0	3506	22	3105	0	0	0	0	30	2266	106
Province of/de l'Alberta	4395	171	0	4396	24	3998	0	0	0	0	45	3046	142
Prairies	6631	212	1	6618	67	6215	1	26	16	6	55	5263	236
Vancouver, B.C./C.-B.	1069	79	2	1069	24	1069	1	12	2	0	0	1069	10
CANADA	18874	692	12	19237	631	17349	53	51	50	24	57	16455	561

Also available at: <http://www.phac-aspc.gc.ca/bid-bmi/dsd-dsm/rvdi-divr/index.html>

Aussi disponible sur le site: [http://www.phac-aspc.gc.ca/bid-bmi/dsd-dsm/rvdi-divr/index\\_f.html](http://www.phac-aspc.gc.ca/bid-bmi/dsd-dsm/rvdi-divr/index_f.html)

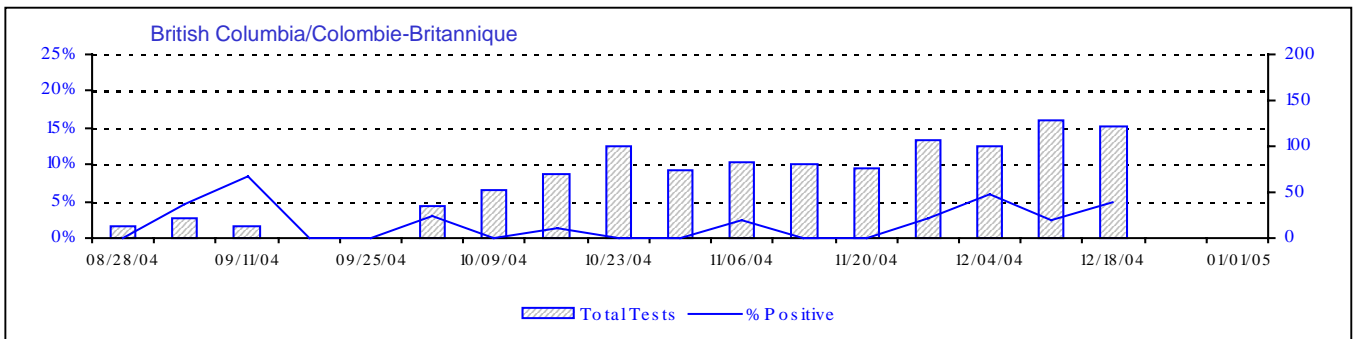
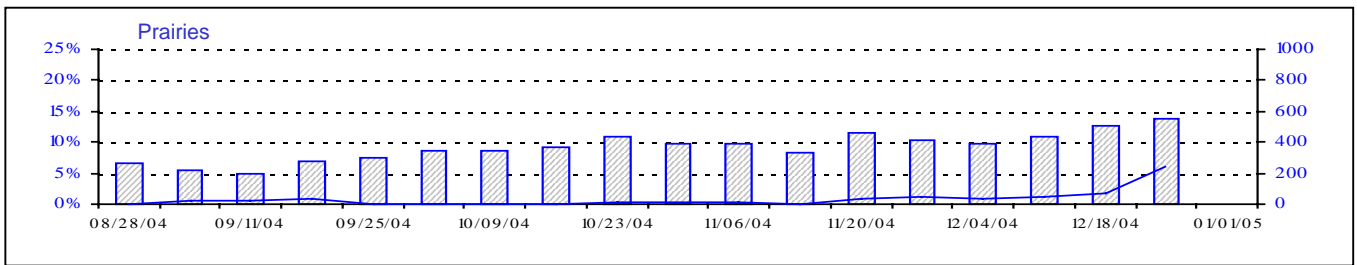
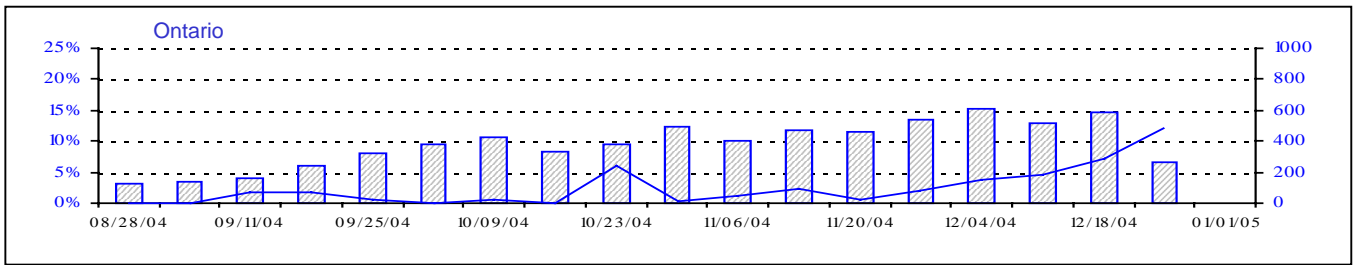
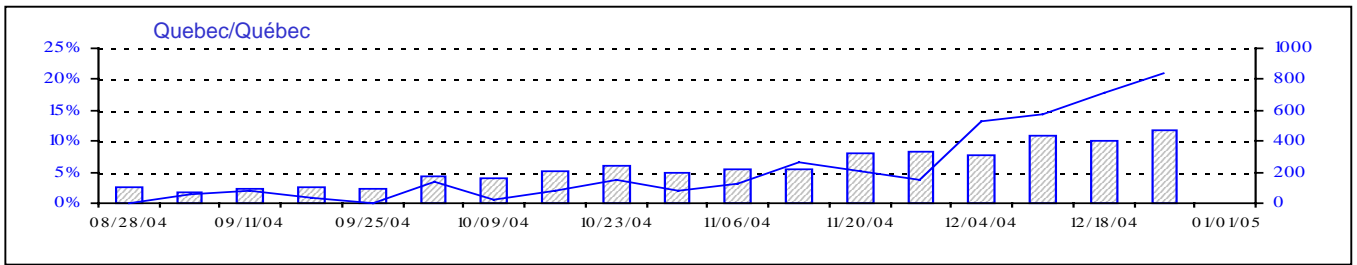
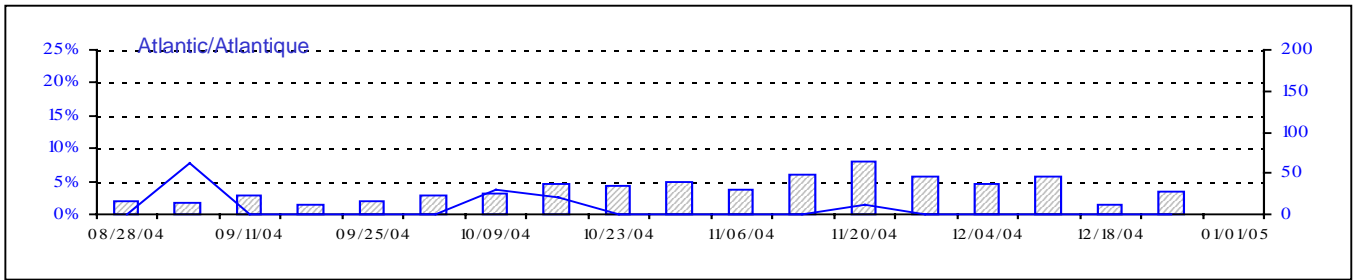
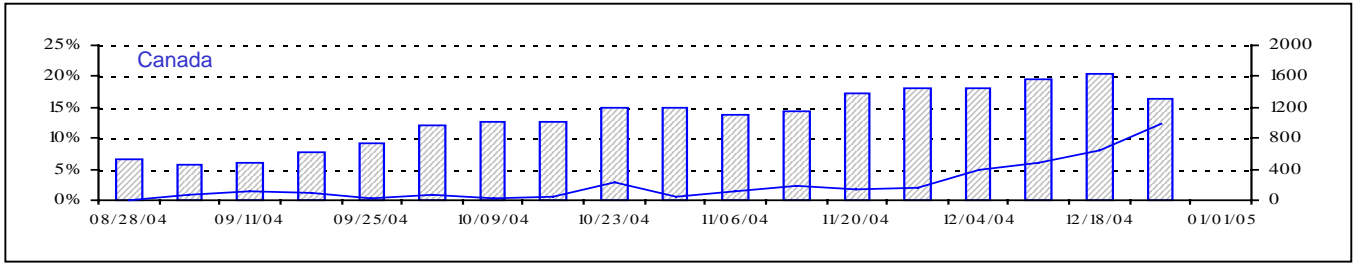
Positive Influenza Tests (%) in Canada by Region by Week of Report  
 Détection du virus grippal au Canada, tests positifs (%) par région  
 par semaine de déclaration



Total Tests Total

▨ Total Tests — % Tests Positive

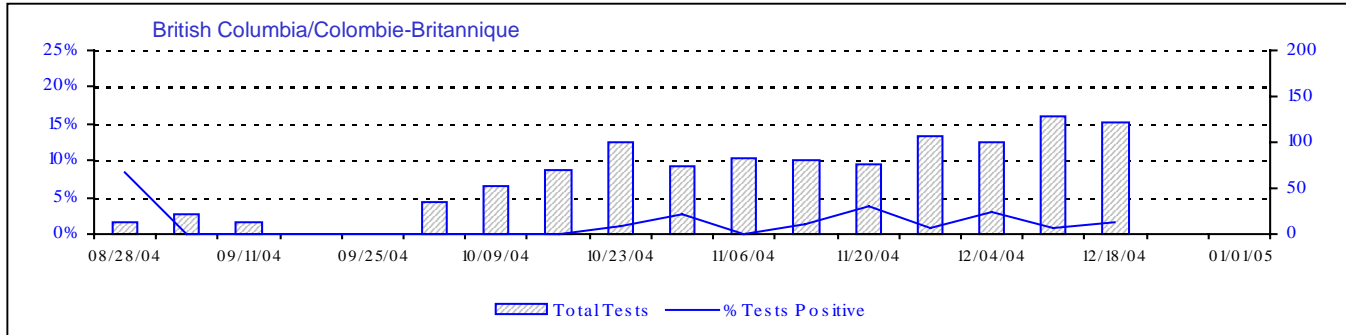
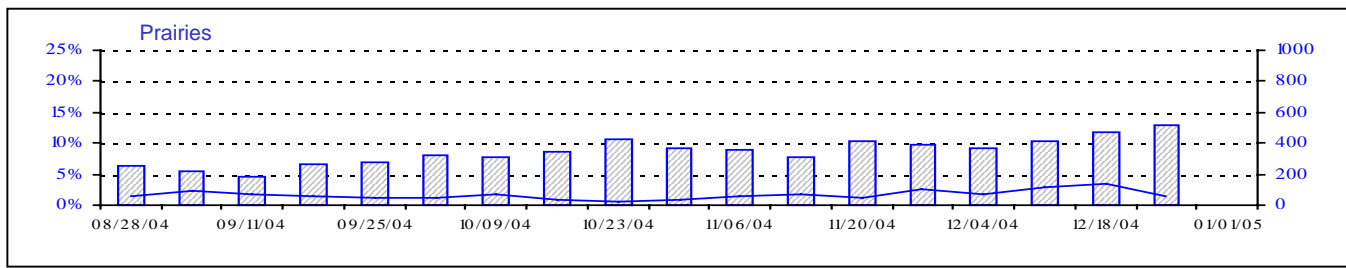
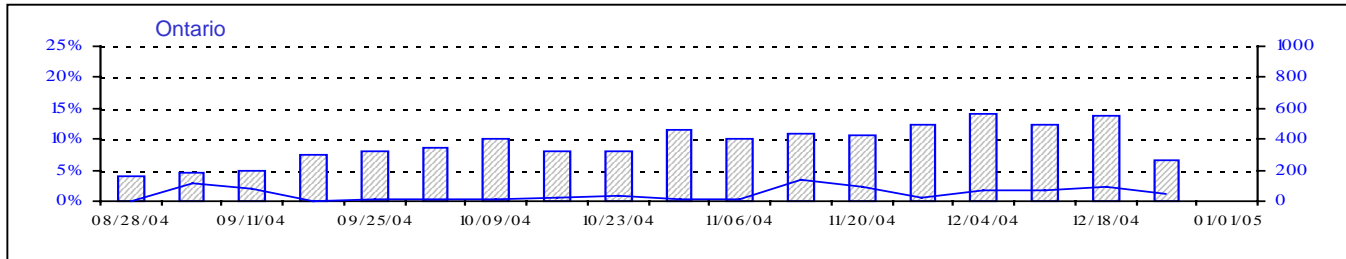
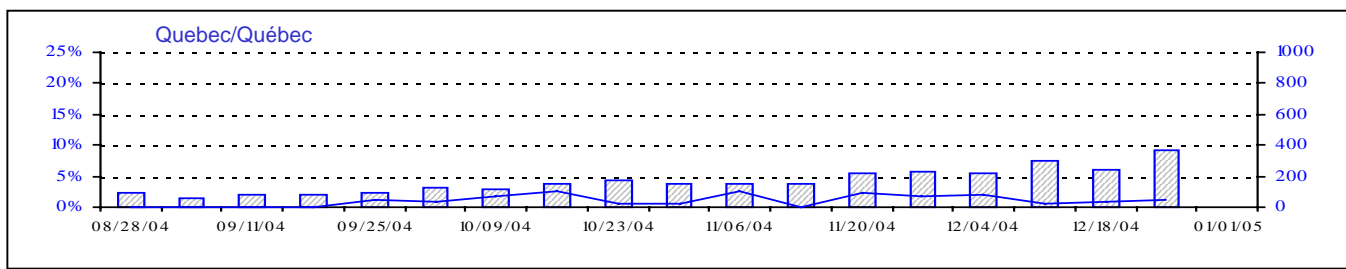
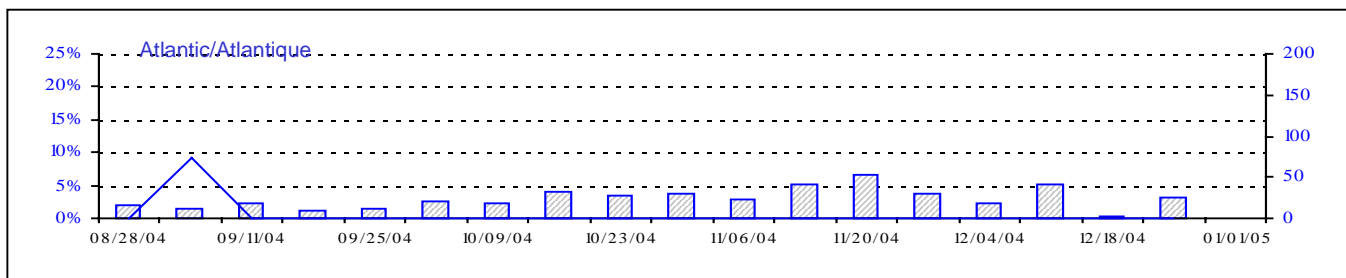
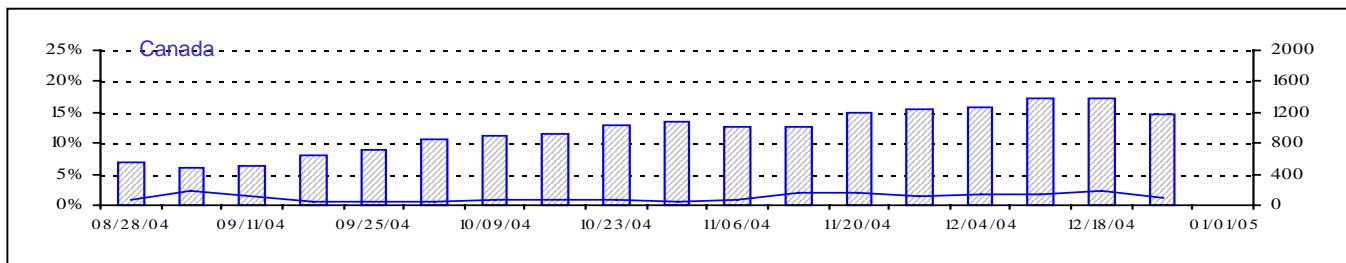
Positive RSV Tests (%) in Canada by Region by Week of Report  
 Détection du virus respiratoire syncytial au Canada, tests positifs (%) par région  
 par semaine de déclaration



Total Tests Total

▨ Total Tests — % Positive

Positive Parainfluenza Tests (%) in Canada by Region by Week of Report  
 Détection du virus parainfluenza au Canada, tests positifs (%) par région  
 par semaine de déclaration



Total Tests Total

▨ Total Tests — % Tests Positive

Positive Adenovirus Tests (%) in Canada by Region by Week of Report  
 Détection des adénovirus au Canada, tests positifs (%) par région  
 par semaine de déclaration

