

Table 1/Tableau 1

Respiratory Virus Detections/Isolations for the week ending May 28, 2005 (Reporting Week 200521)
 Détection/isolement de virus des voies respiratoires pour la semaine se terminant le 28 mai 2005(Code hebdomadaire 200521)

Reporting Laboratory Laboratoire rapporteur	Flu/Grippe Test	Flu/Grippe A Pos.	Flu/Grippe B Pos.	R.S.V. Test	R.S.V. Pos.	PIV Test	PIV 1 Pos.	PIV 2 Pos.	PIV 3 Pos.	PIV 4 Pos.	Other/Autre PIV Pos.	Adeno Test	Adeno Pos.
Nfld./T.-N.	22	0	0	33	0	20	0	0	0	0	0	20	0
P.E.I./ Î.-P.-É.	3	0	0	5	0	3	0	1	0	0	0	3	1
N.S./N.-É.	10	0	3	9	0	9	0	0	1	0	0	9	3
N.B./N.-B.	28	0	1	29	1	26	0	0	0	0	0	26	1
Atlantic/Atlantique	63	0	4	76	1	58	0	1	1	0	0	58	5
Région Nord-Est	12	0	0	11	0	0	0	0	0	0	0	0	0
Québec-Chaudière-Appalaches	20	1	1	46	0	16	1	0	4	0	0	18	1
Centre-du-Québec	9	0	0	12	0	8	0	0	0	0	0	8	0
Montréal-Laval	176	0	0	194	3	169	2	0	16	0	0	164	12
Ouest du Québec	3	0	0	1	0	0	0	0	0	0	0	0	0
Montérégie	0	0	0	4	0	0	0	0	0	0	0	0	0
Province of/de Québec	220	1	1	268	3	193	3	0	20	0	0	190	13
Ottawa P.H.L.	0	0	0	0	0	0	0	0	0	0	0	0	0
CHEO/HEEO - Ottawa	45	0	0	45	2	45	0	0	3	0	0	45	0
Kingston	12	0	0	12	1	12	2	0	4	0	0	12	0
Toronto Medical Laboratory	13	0	0	13	1	13	0	0	1	0	0	13	0
C.P.H.L. - Toronto	131	0	1	138	2	118	0	0	7	0	0	118	0
Sick Kids/Hospital - Toronto	106	0	0	106	2	106	0	0	11	0	0	106	2
Sunnybrook & Women's College HSC	2	0	0	2	0	2	0	0	0	0	0	2	0
Sault Ste. Marie	1	0	0	1	0	1	0	0	1	0	0	1	0
Timmins	7	0	0	7	3	7	0	0	1	0	0	7	0
St. Joseph's - London	8	0	0	8	0	8	0	0	0	0	0	8	0
London P.H.L.	57	2	1	57	4	57	0	0	8	0	0	57	1
Orillia P.H.L.	9	0	0	9	0	9	1	0	0	0	0	9	1
Windsor	13	0	0	13	0	8	0	0	0	0	0	8	0
Thunder Bay	1	0	0	2	0	1	0	0	0	0	0	1	1
Sudbury P.H.L.	7	0	0	7	0	7	0	0	0	0	0	7	0
Hamilton P.H.L.	13	0	0	13	0	0	0	0	0	0	0	0	0
Peterborough P.H.L.	24	0	0	24	0	24	0	0	4	0	0	24	2
Province of/de l'Ontario	449	2	2	457	15	418	3	0	40	0	0	418	7
Manitoba	47	0	0	47	2	47	0	0	2	0	0	47	0
Regina	86	0	1	86	0	86	0	0	14	0	0	86	9
Saskatoon	19	0	0	17	1	19	0	0	0	0	5	19	1
Province of/de la Saskatchewan	105	0	1	103	1	105	0	0	14	0	5	105	10
Calgary	54	0	0	54	1	54	0	0	0	0	6	39	4
Edmonton	183	1	0	211	4	181	0	0	0	0	21	117	3
Province of/de l'Alberta	237	1	0	265	5	235	0	0	0	0	27	156	7
Prairies	389	1	1	415	8	387	0	0	16	0	32	308	17
Vancouver, B.C./C.-B.	69	1	0	69	0	69	0	0	1	0	0	69	2
CANADA	1190	5	8	1285	27	1125	6	1	78	0	32	1043	44

Also available at: <http://www.phac-aspc.gc.ca/bid-bmi/dsd-dsm/rvdi-divr/index-html>

Aussi disponible sur le site: http://www.phac-aspc.gc.ca/bid-bmi/dsd-dsm/rvdi-divr/index_f.html

Table 2/Tableau 2

Respiratory Virus Detections/Isolations for the period August 22, 2004 - May 28, 2005
 Détection/isolement de virus des voies respiratoires pour la période du 22 août 2004 - 28 mai 2005
 (Reporting Weeks 200435 -200521/Code hebdomadaire 200435-200521)

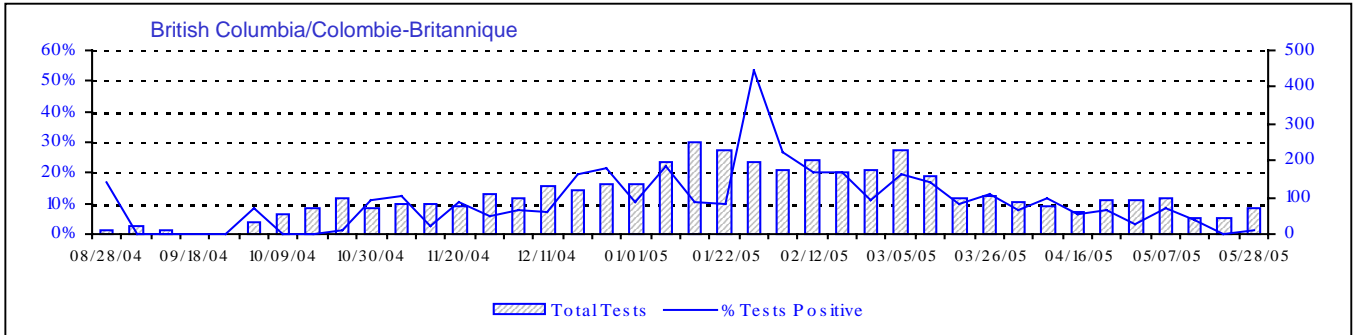
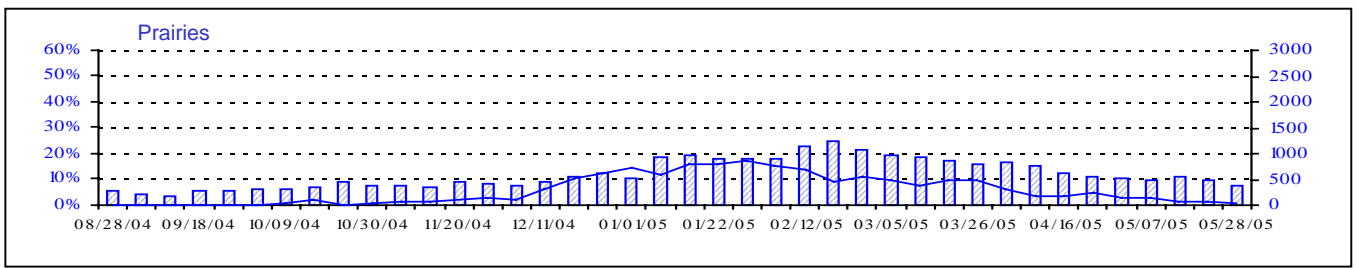
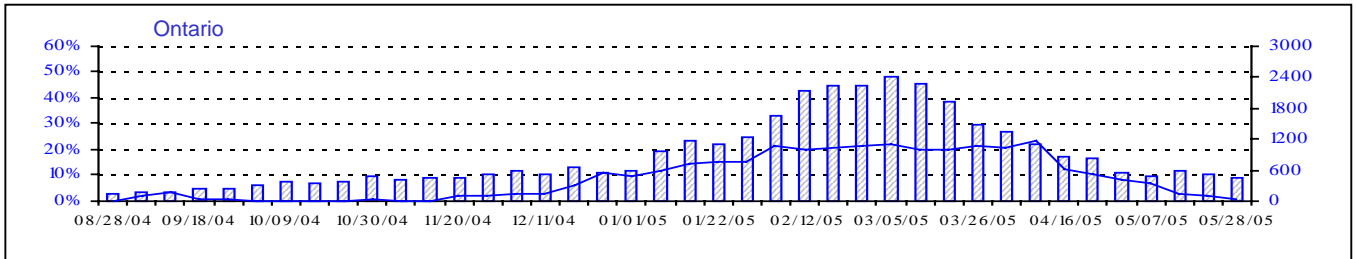
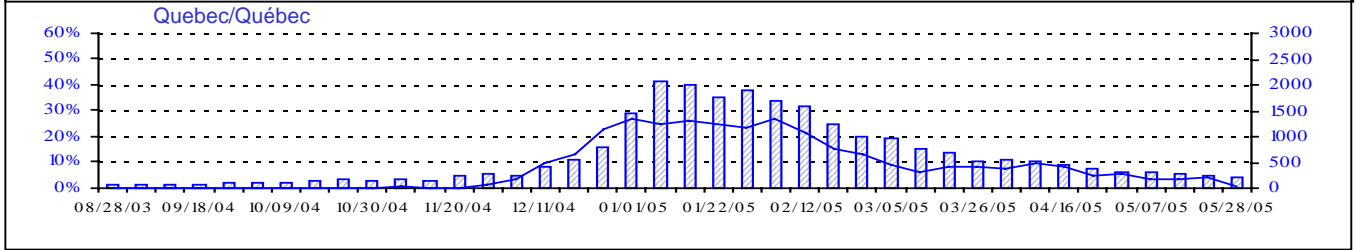
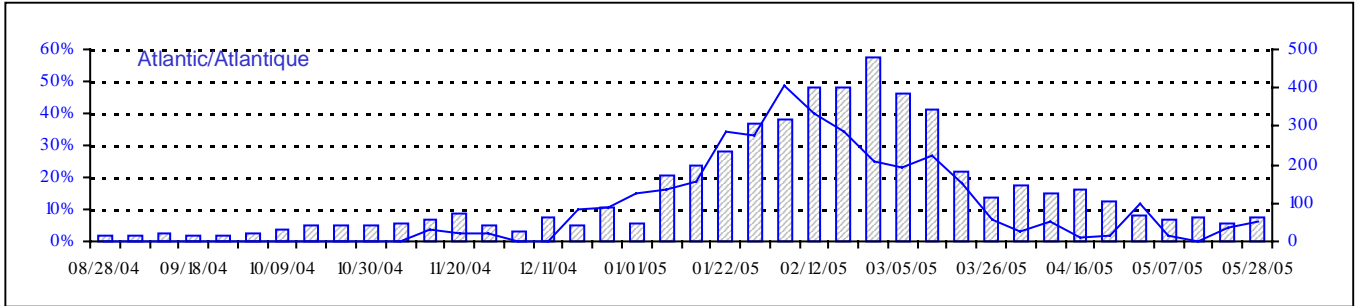
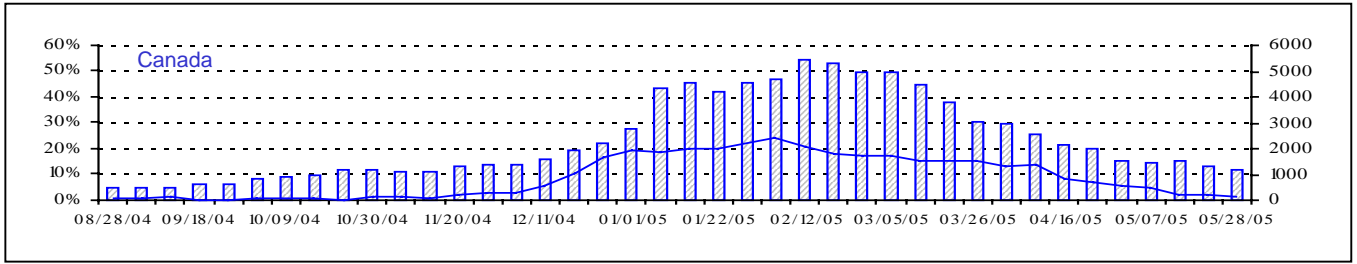
Reporting Laboratory Laboratoire rapporteur	Flu/Grippe Test	Flu/Grippe A Pos.	Flu/Grippe B Pos.	R.S.V. Test	R.S.V. Pos.	PIV Test	PIV 1 Pos.	PIV 2 Pos.	PIV 3 Pos.	PIV 4 Pos.	Other/Autre PIV Pos.	Adeno Test	Adeno Pos.
Nfld./T.-N.	979	142	0	455	73	106	0	0	0	0	0	139	4
P.E.I./Î.-P.-É.	84	22	3	161	20	84	0	1	2	0	0	84	2
N.S./N.-É.	1626	501	14	913	24	913	1	2	14	0	0	913	22
N.B./N.-B.	2399	393	27	1899	47	1766	1	3	10	0	0	1776	91
Atlantic/Atlantique	5088	1058	44	3428	164	2869	2	6	26	0	0	2912	119
Région Nord-Est	2236	470	18	706	194	0	0	0	0	0	0	0	0
Québec-Chaudière-Appalaches	3635	508	57	3113	417	1637	7	1	15	9	0	2438	192
Centre-du-Québec	4844	913	84	1515	303	550	0	0	2	0	0	547	13
Montréal-Laval	10271	1043	182	8694	1182	6619	37	5	149	13	0	6563	279
Ouest du Québec	1957	467	42	642	272	0	0	0	0	0	0	0	0
Montréal	1846	336	42	726	205	0	0	0	0	0	0	0	0
Province of/de Québec	24789	3737	425	15396	2573	8806	44	6	166	22	0	9548	484
Ottawa P.H.L.	243	46	2	44	4	0	0	0	0	0	0	0	0
CHEO/HEEO - Ottawa	3080	274	66	3080	643	3030	4	2	31	0	0	3680	23
Kingston	1730	248	65	1730	110	1730	11	2	28	0	0	1730	4
Toronto Medical Laboratory	2097	108	30	2070	78	1977	0	0	5	0	0	1979	5
C.P.H.L. - Toronto	10645	969	485	11059	526	9811	67	7	82	12	2	9811	134
Sick Kids' Hospital - Toronto	4597	193	145	4822	537	5025	36	4	92	0	0	5025	83
Sunnybrook & Women's College HSC	433	26	8	433	3	433	1	0	2	0	0	433	0
Sault Ste. Marie	333	59	11	333	36	333	0	2	2	0	0	333	1
Timmins	663	148	18	663	45	663	0	0	8	0	0	663	2
St.Joseph's-London	925	69	5	925	160	925	0	1	9	0	5	925	10
London P.H.L.	3811	769	163	3811	336	3800	10	10	43	2	0	3800	51
Orillia P.H.L.	1971	261	103	1971	80	1971	13	5	37	2	0	1971	25
Windsor	969	163	14	841	25	684	0	1	5	0	0	634	4
Thunder Bay	536	89	16	311	80	536	0	0	6	0	0	536	3
Sudbury P.H.L.	545	47	22	545	13	545	4	0	7	0	0	545	0
Hamilton P.H.L.	595	83	17	573	10	0	0	0	0	0	0	0	0
Peterborough P.H.L.	1966	278	133	1966	144	1966	8	4	34	0	0	1966	20
Province of/de l'Ontario	35139	3830	1303	35177	2830	33429	154	38	391	16	7	34031	365
Manitoba	3001	144	67	3411	369	2615	2	3	48	0	0	2615	70
Regina	5340	472	34	5340	466	5340	4	37	102	8	1	5340	181
Saskatoon	1069	99	6	867	187	1069	0	0	0	0	44	1069	31
Province of/de la Saskatchewan	6409	571	40	6207	653	6409	4	37	102	8	45	6409	212
Calgary	2800	288	97	2817	81	2820	0	0	0	0	82	2330	125
Edmonton	11662	582	63	12259	1348	9573	0	0	0	0	282	6841	233
Province of/de l'Alberta	14462	870	160	15076	1429	12393	0	0	0	0	364	9171	358
Prairies	23872	1585	267	24694	2451	21417	6	40	150	8	409	18195	640
Vancouver, B.C./C.-B.	4189	534	65	4189	152	4189	9	21	21	0	0	4139	65
CANADA	93077	10744	2104	82884	8170	70710	215	111	754	46	416	68825	1673

Also available at: <http://www.phac-aspc.gc.ca/bid-bmi/dsd-dsm/rvdi-divr/index.html>

Aussi disponible sur le site: http://www.phac-aspc.gc.ca/bid-bmi/dsd-dsm/rvdi-divr/index_f.html

Positive Influenza Tests (%) in Canada by Region by Week of Report

Détection du virus grippal au Canada, tests positifs (%) par région par semaine de déclaration



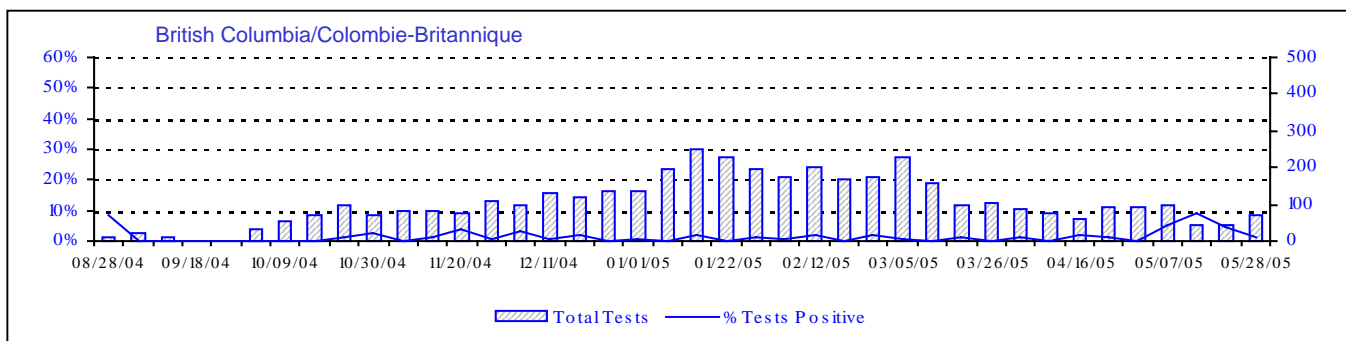
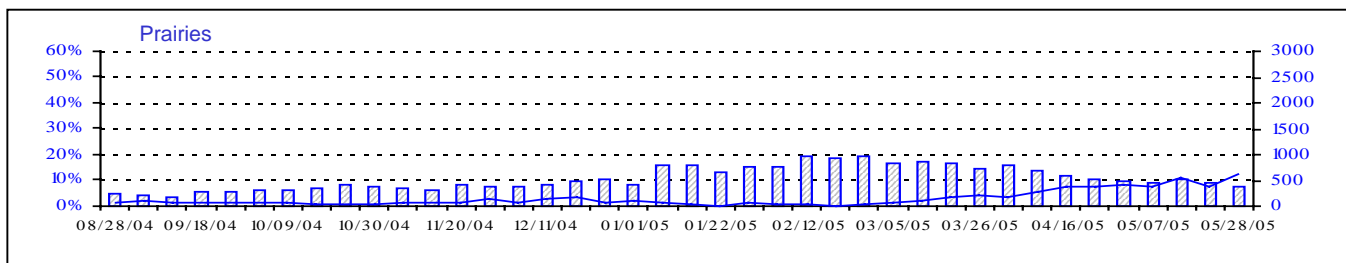
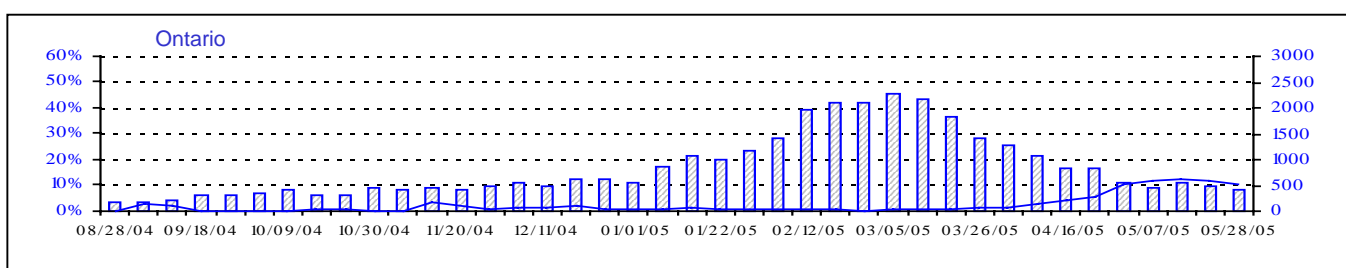
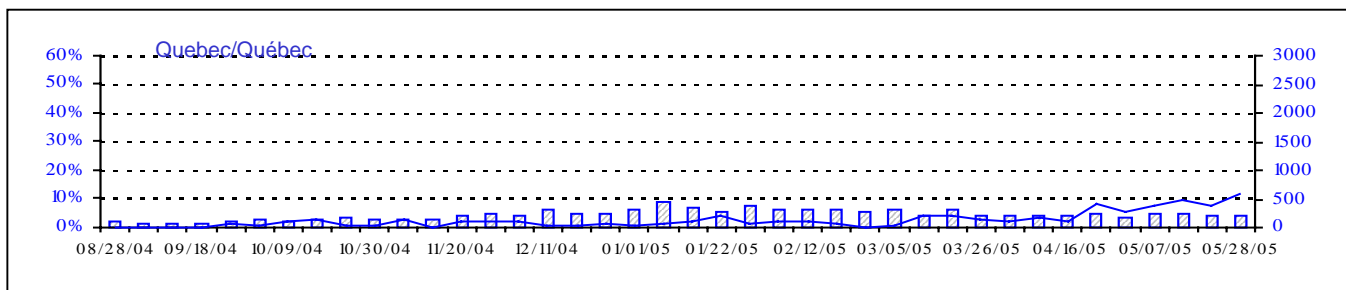
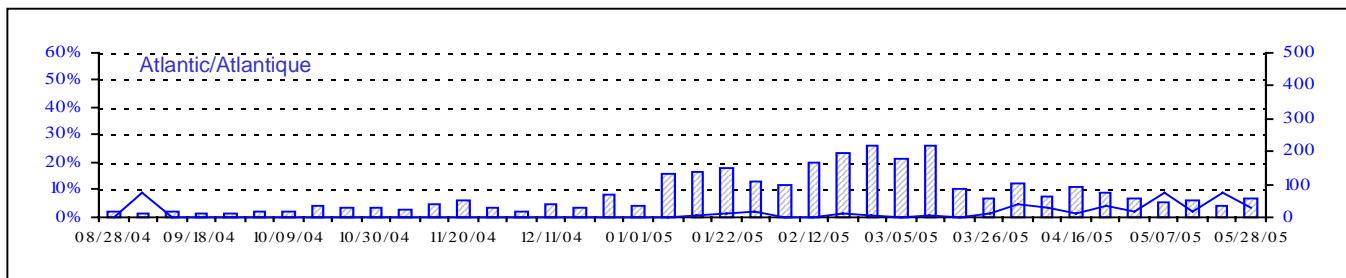
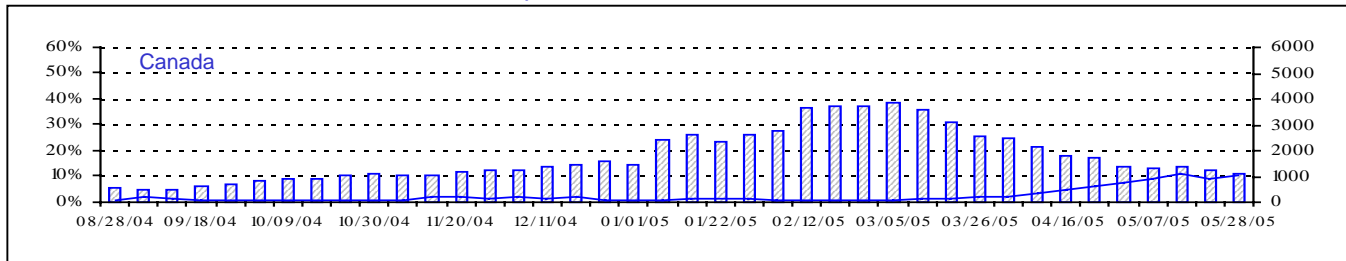
Total Tests
 % Tests Positive

Total Tests Total

Positive RSV Tests (%) in Canada by Region by Week of Report
 Détection du virus respiratoire syncytial au Canada, tests positifs (%) par région
 par semaine de déclaration



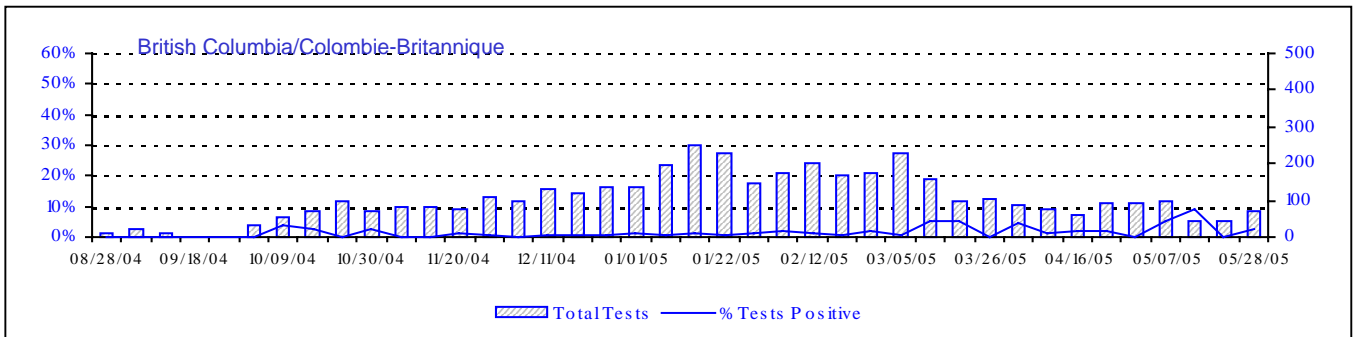
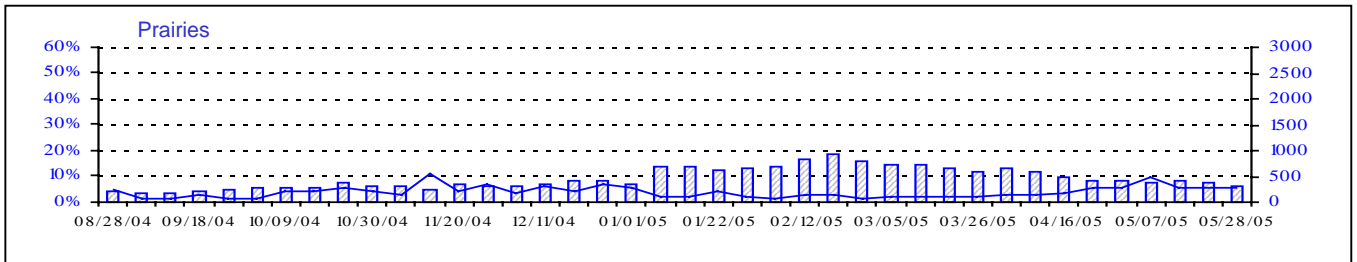
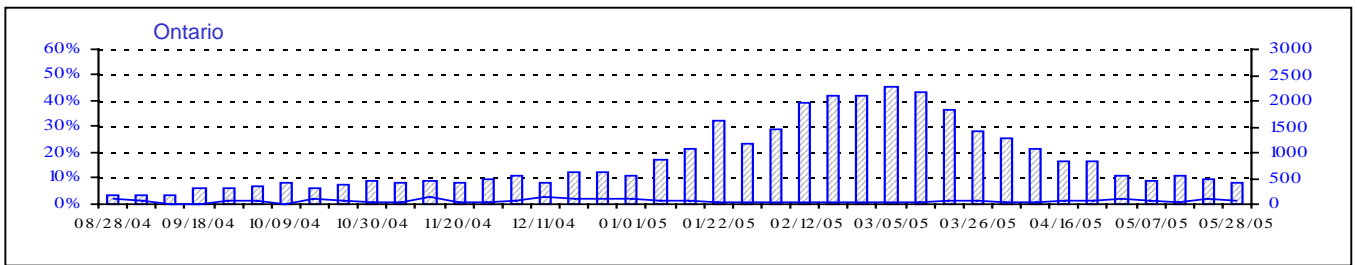
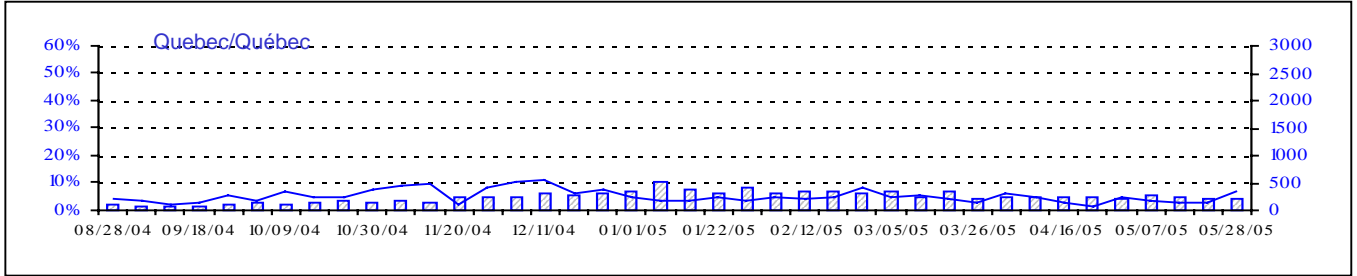
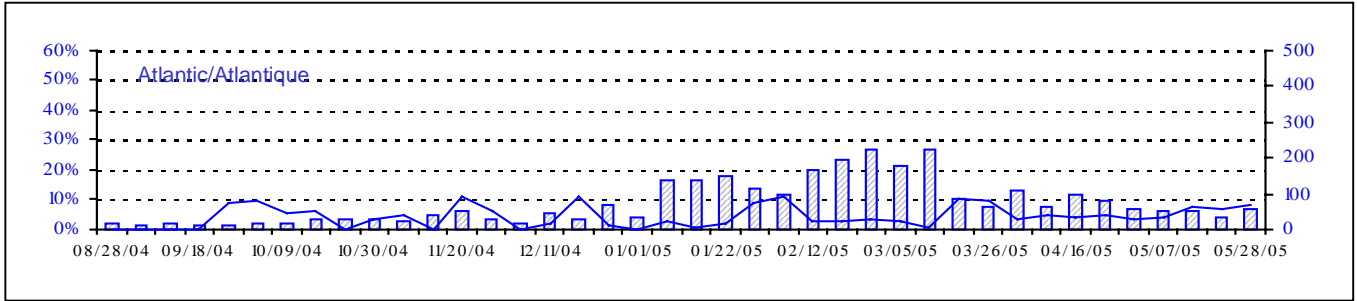
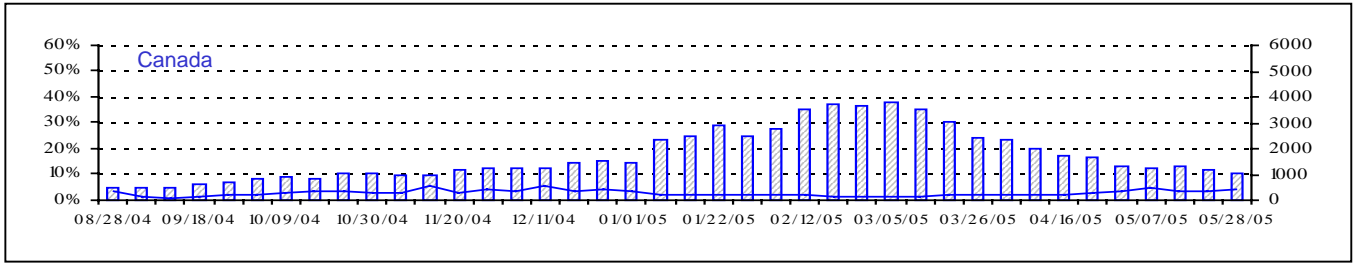
Positive Parainfluenza Tests (%) in Canada by Region by Week of Report
 Détection du virus parainfluenza au Canada, tests positifs (%) par région
 par semaine de déclaration



Total Tests Total

▨ Total Tests — % Tests Positive

Positive Adenovirus Tests (%) in Canada by Region by Week of Report
 Détection des adénovirus au Canada, tests positifs (%) par région
 par semaine de déclaration



Total Tests Total

▨ Total Tests — % Tests Positive