

Table 1/Tableau 1

Respiratory Virus Detections/Isolations for the week ending August 27, 2005 (Reporting Week 200534)
 Détection/isolement de virus des voies respiratoires pour la semaine se terminant le 27 août 2005 (Code hebdomadaire 200534)

Reporting Laboratory Laboratoire rapporteur	Flu/Grippe Test	Flu/Grippe A Pos.	Flu/Grippe B Pos.	R.S.V. Test	R.S.V. Pos.	PIV Test	PIV 1 Pos.	PIV 2 Pos.	PIV 3 Pos.	PIV 4 Pos.	Other/Autre PIV Pos.	Adeno Test	Adeno Pos.
Nfld./T.-N.	5	0	0	6	0	2	0	0	0	0	0	6	2
P.E.I./Î.-P.-É.	1	0	0	2	0	1	0	0	0	0	0	1	0
N.S./N.-É.	9	0	0	9	0	9	0	0	0	0	0	9	1
N.B./N.-B.	19	0	0	18	0	18	0	0	0	0	0	18	2
Atlantic/Atlantique	34	0	0	35	0	30	0	0	0	0	0	34	5
Région Nord-Est	11	0	0	10	3	0	0	0	0	0	0	0	0
Québec-Chaudière-Appalaches	23	0	0	27	0	26	0	0	0	0	0	28	1
Centre-du-Québec	8	0	0	8	0	8	0	0	0	0	0	10	0
Montréal-Laval	83	0	0	106	0	106	0	1	1	0	0	117	3
Ouest du Québec	0	0	0	0	0	0	0	0	0	0	0	0	0
Montérégie	0	0	0	0	0	0	0	0	0	0	0	0	0
Province of/de Québec	125	0	0	151	3	140	0	1	1	0	0	155	4
Ottawa P.H.L.	5	0	0	5	0	0	0	0	0	0	0	0	0
CHEO/HEEO - Ottawa	-	-	-	-	-	-	-	-	-	-	-	-	-
Kingston	-	-	-	-	-	-	-	-	-	-	-	-	-
Toronto Medical Laboratory	19	0	0	15	0	15	0	0	0	0	0	19	0
C.P.H.L. - Toronto	52	0	0	55	1	49	4	0	4	0	0	49	2
Sick Kids/Hospital - Toronto	0	0	0	0	0	47	3	0	0	0	0	47	1
Sunnybrook & Women's College HSC	1	0	0	1	0	1	0	0	0	0	0	1	0
Sault Ste. Marie	0	0	0	0	0	0	0	0	0	0	0	0	0
Timmins	2	0	0	2	0	2	0	0	0	0	0	2	0
St. Joseph's - London	10	0	0	10	0	10	0	0	0	0	0	10	0
London P.H.L.	16	0	0	16	0	16	0	1	0	0	0	16	0
Orillia P.H.L.	4	0	0	4	0	4	0	0	0	0	0	4	0
Windsor	0	0	0	0	0	0	0	0	0	0	0	0	0
Thunder Bay	3	0	0	2	0	3	0	0	0	0	0	3	0
Sudbury P.H.L.	1	0	0	1	0	1	1	0	0	0	0	1	0
Hamilton P.H.L.	2	0	0	2	0	0	0	0	0	0	0	0	0
Peterborough P.H.L.	2	0	0	2	0	2	0	0	0	0	0	2	0
Province of/de l'Ontario	117	0	0	115	1	150	8	1	4	0	0	154	3
Manitoba	43	0	0	45	0	43	0	0	0	0	0	43	0
Regina	43	0	0	43	0	43	1	0	1	0	0	43	0
Saskatoon	25	0	0	14	0	25	0	0	0	0	0	25	0
Province of/de la Saskatchewan	68	0	0	57	0	68	1	0	1	0	0	68	0
Calgary	14	0	0	14	0	14	0	0	0	0	1	13	2
Edmonton	103	0	0	104	0	96	0	0	0	0	0	59	0
Province of/de l'Alberta	117	0	0	118	0	110	0	0	0	0	1	72	2
Prairies	228	0	0	220	0	221	1	0	1	0	1	183	2
Vancouver, B.C./C.-B.	36	4	0	36	0	36	0	0	0	0	0	36	0
CANADA	540	4	0	557	4	577	9	2	6	0	1	562	14

Also available at: <http://www.phac-aspc.gc.ca/bid-bmi/dsd-dsm/rvdi-divr/index-html>

Aussi disponible sur le site: http://www.phac-aspc.gc.ca/bid-bmi/dsd-dsm/rvdi-divr/index_f.html

Table 2/Tableau 2

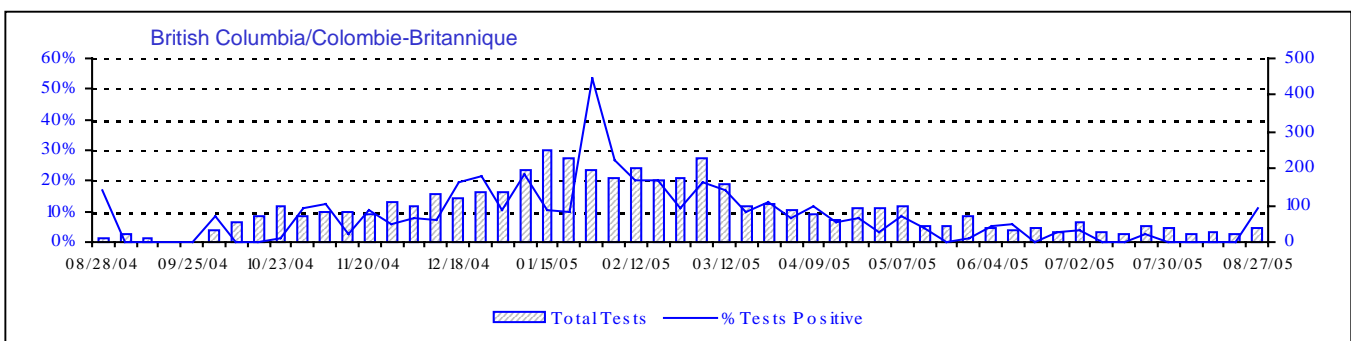
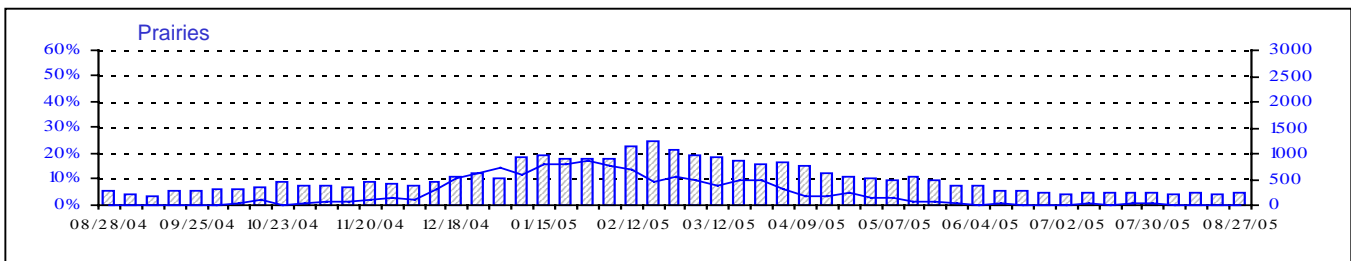
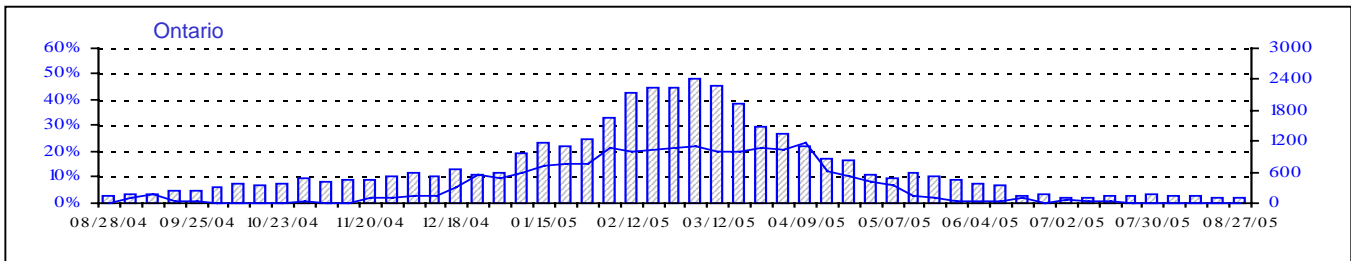
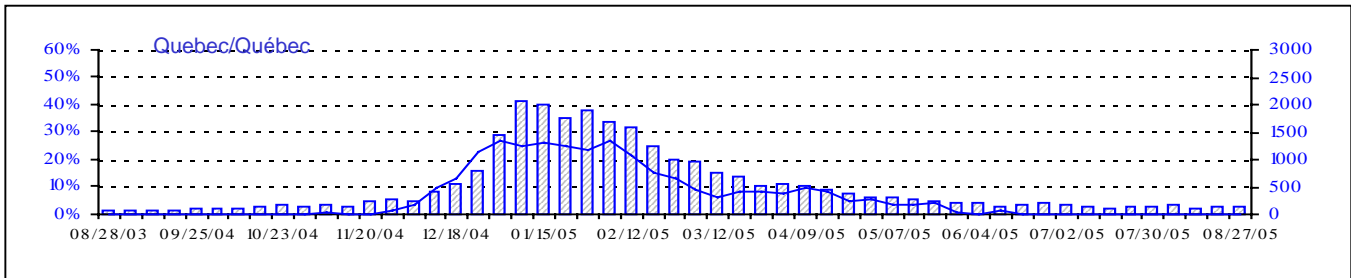
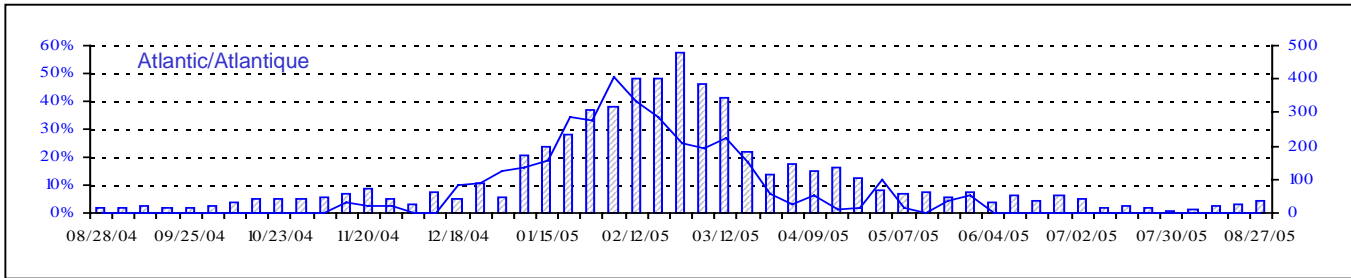
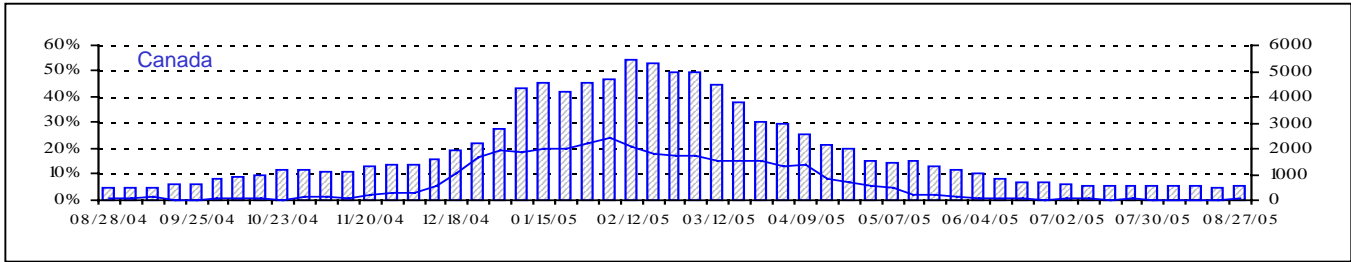
Respiratory Virus Detections/Isolations for the period August 22, 2004 - August 27, 2005
 Détection/isolement de virus des voies respiratoires pour la période du 22 août 2004 - 27 août 2005
 (Reporting Weeks 200435 -200534/Code hebdomadaire 200435-200534)

Reporting Laboratory Laboratoire rapporteur	Flu/Grippe Test	Flu/Grippe A Pos.	Flu/Grippe B Pos.	R.S.V. Test	R.S.V. Pos.	PIV Test	PIV 1 Pos.	PIV 2 Pos.	PIV 3 Pos.	PIV 4 Pos.	Other/Autre PIV Pos.	Adeno Test	Adeno Pos.
Nfld./T.-N.	1035	142	0	589	76	149	0	0	0	0	0	217	10
P.E.I./Î.-P.-É.	106	22	3	194	23	106	0	1	3	0	0	103	6
N.S./N.-É.	1748	501	14	1033	24	1033	1	3	19	0	0	1033	26
N.B./N.-B.	2565	393	27	2060	48	1916	2	3	15	0	0	1925	116
Atlantic/Atlantique	5454	1058	44	3876	171	3204	3	7	37	0	0	3278	158
Région Nord-Est	2295	470	19	780	210	0	0	0	0	0	0	0	0
Québec-Chaudière-Appalaches	3954	508	57	3535	419	1964	8	1	19	9	0	2790	203
Centre-du-Québec	4896	913	84	1604	304	609	0	0	2	0	0	608	14
Montréal-Laval	11782	1044	182	10552	1203	8397	45	7	226	13	0	8356	337
Ouest du Québec	1958	467	42	665	278	0	0	0	0	0	0	0	0
Montérégie	1851	336	42	739	205	0	0	0	0	0	0	0	0
Province of/de Québec	26736	3738	426	17875	2619	10970	53	8	247	22	0	11754	554
Ottawa P.H.L.	272	46	2	58	4	0	0	0	0	0	0	0	0
CHEO/HEEO - Ottawa	3317	274	66	3317	645	3267	8	2	39	0	0	3917	28
Kingston	1795	248	65	1795	110	1795	16	2	40	0	0	1795	4
Toronto Medical Laboratory	2293	108	30	2262	78	2169	0	0	6	0	0	2175	6
C.P.H.L. - Toronto	11468	971	490	11947	532	10594	108	11	176	12	2	10594	160
Sick Kids' Hospital - Toronto	4760	193	145	5210	538	5922	67	6	135	0	0	5922	98
Sunnybrook & Women's College HSC	464	26	9	462	3	462	1	0	2	0	0	462	0
Sault Ste. Marie	355	59	11	357	36	357	0	2	2	0	0	357	1
Timmins	706	148	18	706	46	706	0	0	12	0	0	706	5
St.Joseph's-London	1055	69	5	1055	164	1055	0	1	20	0	7	1049	13
London P.H.L.	4009	773	163	4009	339	3998	10	11	67	2	0	3998	54
Orillia P.H.L.	2036	261	103	2036	81	2036	17	6	47	2	0	2036	30
Windsor	1030	163	14	903	25	734	0	1	6	0	0	676	4
Thunder Bay	567	89	16	338	80	567	0	0	9	0	0	567	4
Sudbury P.H.L.	579	47	22	579	13	579	6	0	12	0	0	579	1
Hamilton P.H.L.	626	83	17	604	10	0	0	0	0	0	0	0	0
Peterborough P.H.L.	2013	278	133	2013	144	2013	11	4	42	0	0	2013	22
Province of/de l'Ontario	37345	3836	1309	37651	2848	36254	244	46	615	16	9	36846	430
Manitoba	3497	144	67	3931	375	3107	2	3	56	0	0	3107	76
Regina	6022	472	35	6022	469	6022	6	37	140	8	1	6022	227
Saskatoon	1279	99	6	1043	189	1279	0	0	0	0	61	1279	39
Province of/de la Saskatchewan	7301	571	41	7065	658	7301	6	37	140	8	62	7301	266
Calgary	3144	291	97	3161	81	3164	0	0	0	0	98	2619	156
Edmonton	13161	583	63	13926	1349	11048	0	0	1	0	338	7813	277
Province of/de l'Alberta	16305	874	160	17087	1430	14212	0	0	1	0	436	10432	433
Prairies	27103	1589	268	28083	2463	24620	8	40	197	8	498	20840	775
Vancouver, B.C./C.-B.	4620	545	66	4620	153	4620	13	21	35	0	0	4570	80
CANADA	101258	10766	2113	92105	8254	79668	321	122	1131	46	507	77288	1997

Also available at: <http://www.phac-aspc.gc.ca/bid-bmi/dsd-dsm/rvdi-divr/index.html>

Aussi disponible sur le site: http://www.phac-aspc.gc.ca/bid-bmi/dsd-dsm/rvdi-divr/index_f.html

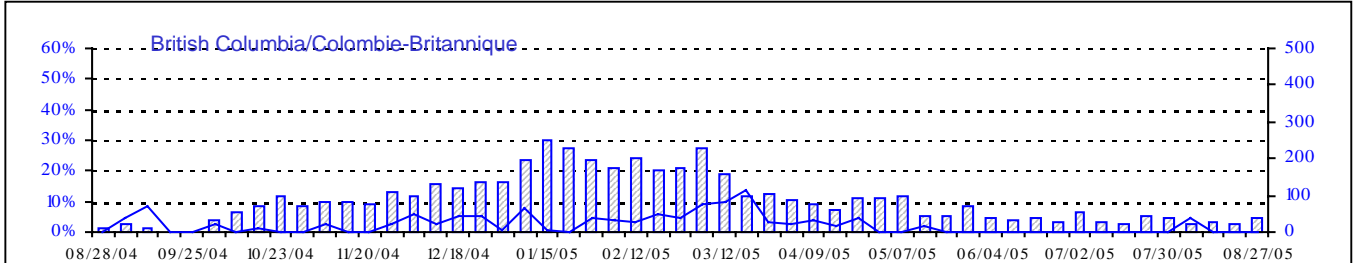
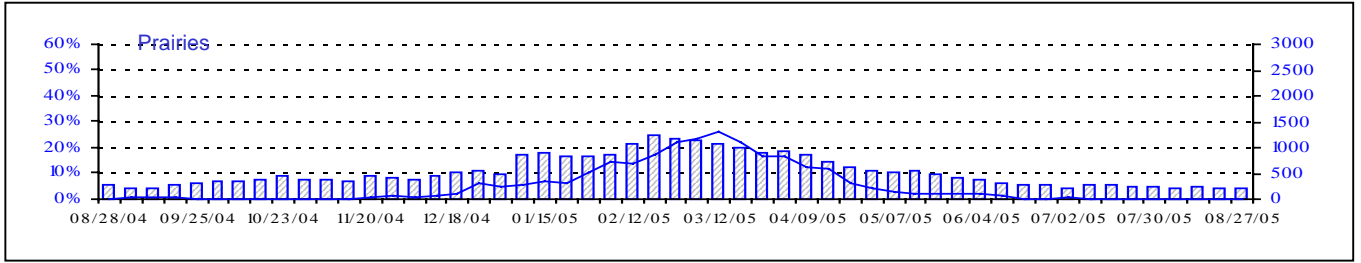
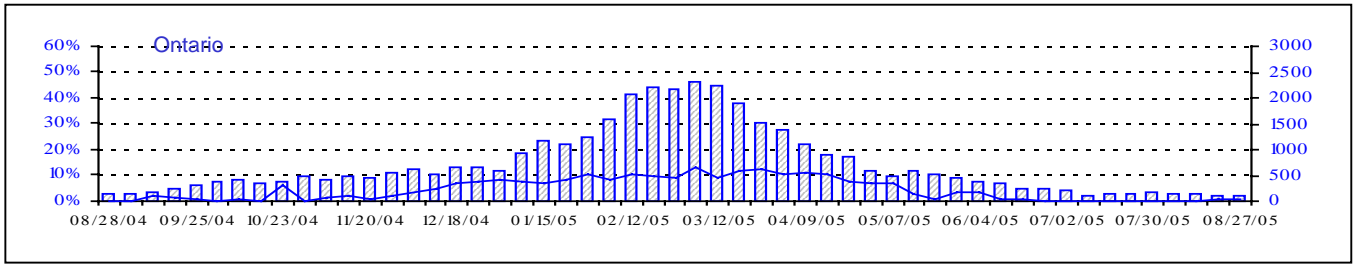
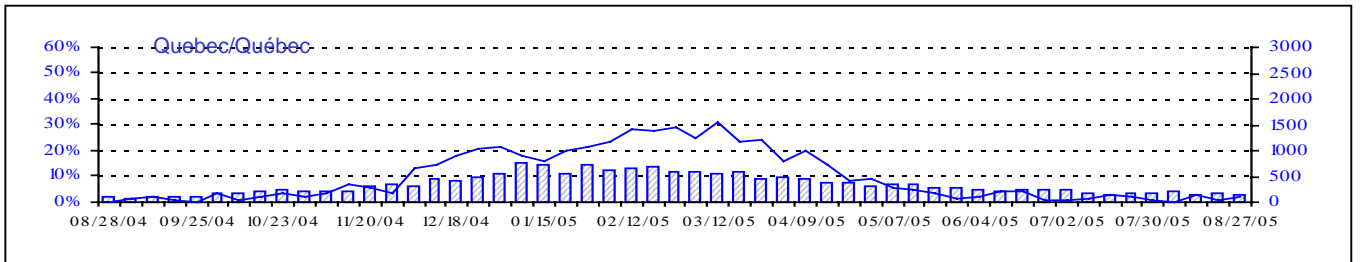
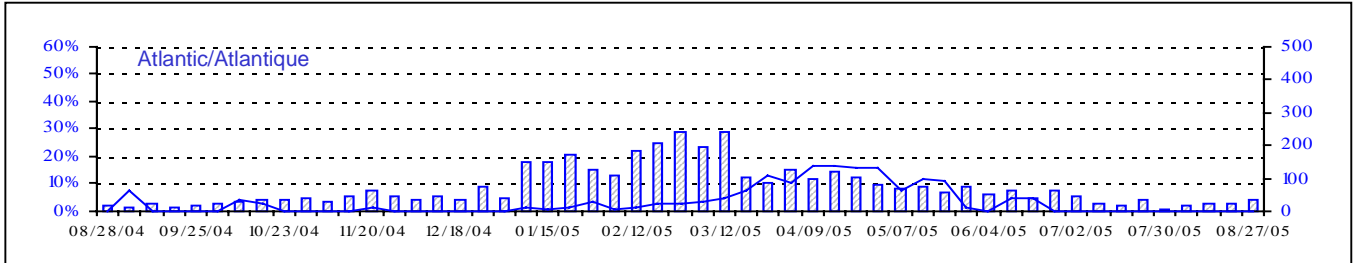
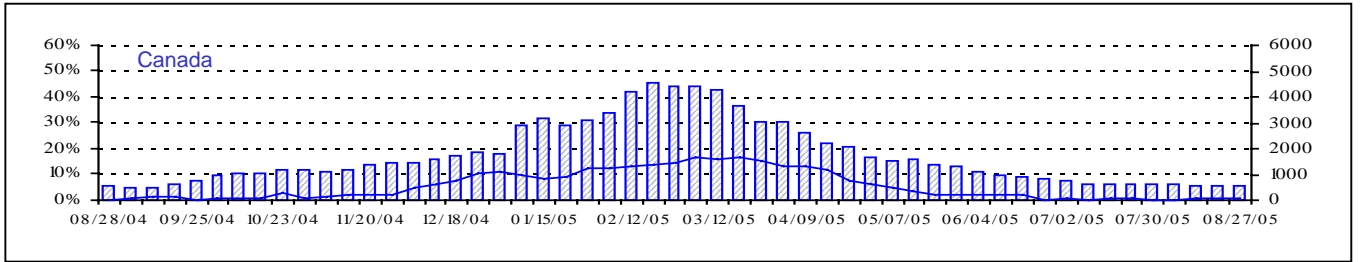
Positive Influenza Tests (%) in Canada by Region by Week of Report
 Détection du virus grippal au Canada, tests positifs (%) par région
 par semaine de déclaration



Total Tests Total

▨ Total Tests — % Tests Positive

Positive RSV Tests (%) in Canada by Region by Week of Report
 Détection du virus respiratoire syncytial au Canada, tests positifs (%) par région
 par semaine de déclaration

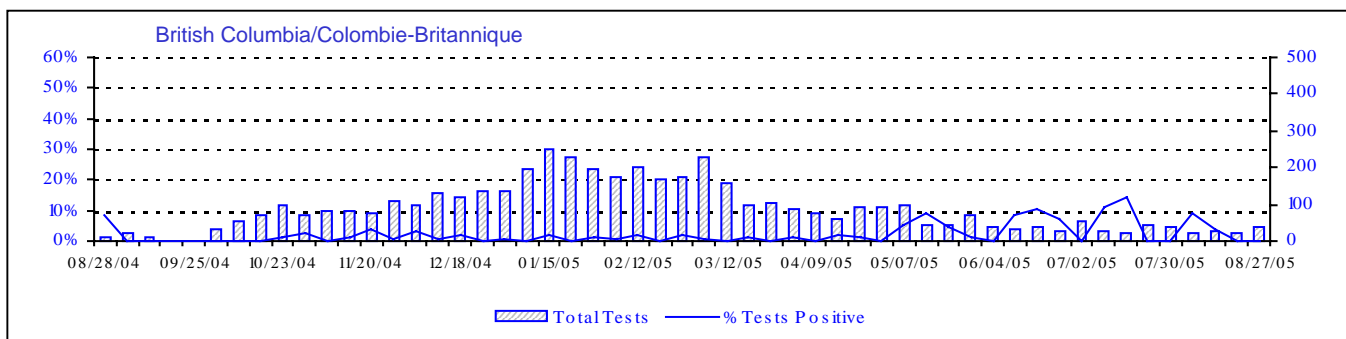
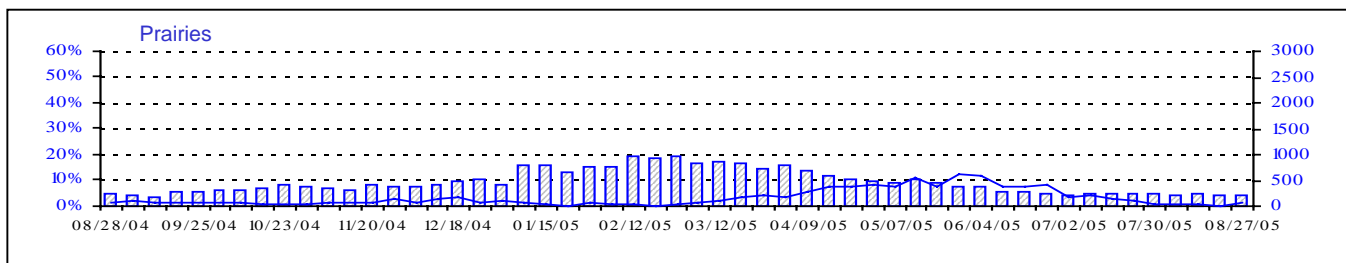
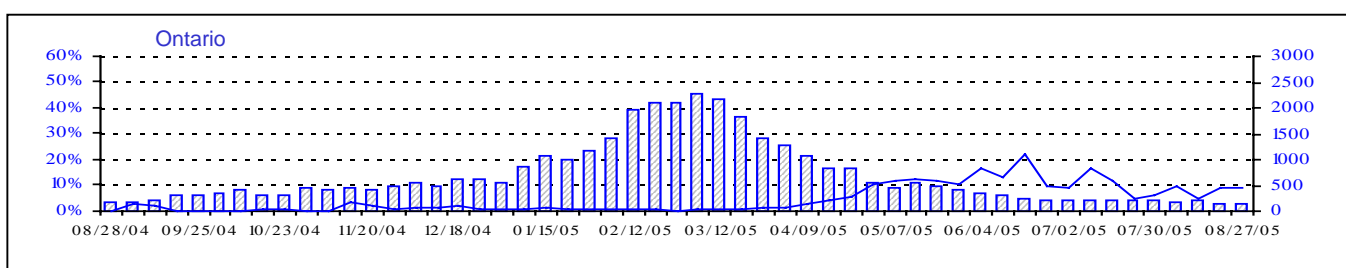
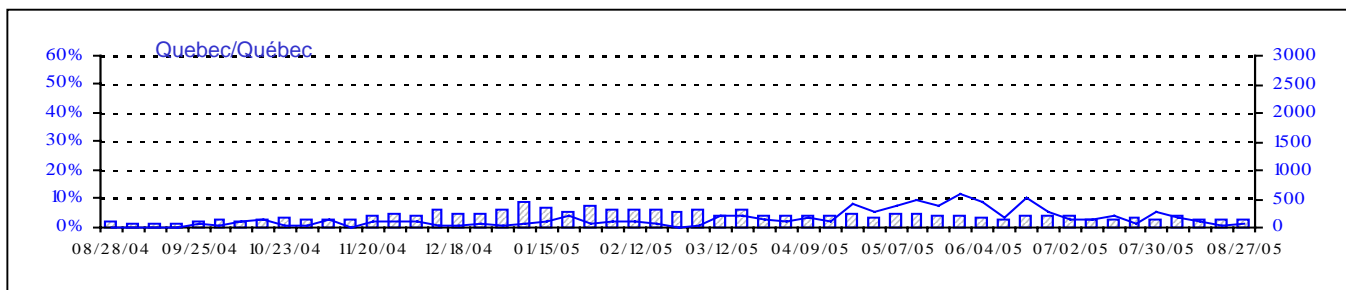
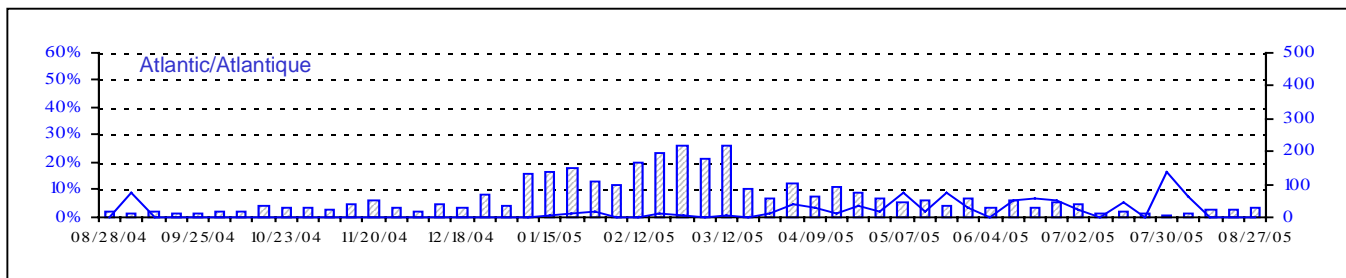
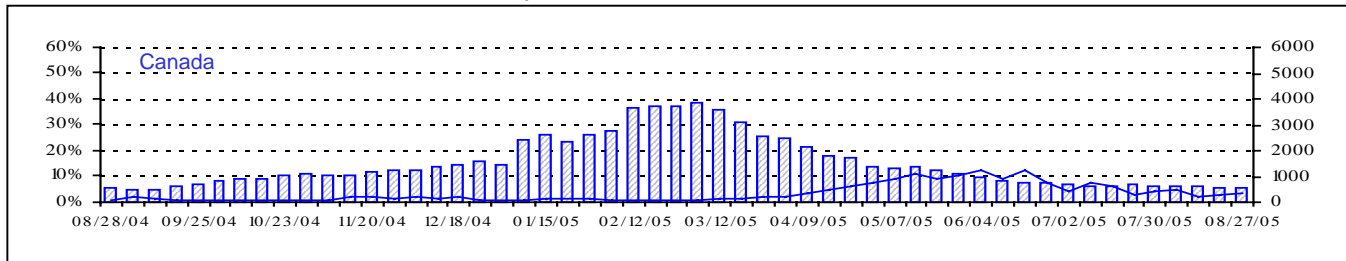


▨ Total Tests — % Positive

Total Tests Total

% Tests Positive/Positifs

Positive Parainfluenza Tests (%) in Canada by Region by Week of Report
 Détection du virus parainfluenza au Canada, tests positifs (%) par région
 par semaine de déclaration



Total Tests Total

▨ Total Tests — % Tests Positive

Positive Adenovirus Tests (%) in Canada by Region by Week of Report
 Détection des adénovirus au Canada, tests positifs (%) par région
 par semaine de déclaration

