

Table 1/Tableau 1

Respiratory Virus Detections/Isolations for the week ending October 2, 2004 (Reporting Week 200440)
 Détection/isolement de virus des voies respiratoires pour la semaine se terminant le 2 octobre 2004 (Code hebdomadaire 200440)

Reporting Laboratory Laboratoire rapporteur	Flu/Grippe Test	Flu/Grippe A Pos.	Flu/Grippe B Pos.	R.S.V. Test	R.S.V. Pos.	PIV Test	PIV 1 Pos.	PIV 2 Pos.	PIV 3 Pos.	PIV 4 Pos.	Other/Autre PIV Pos.	Adeno Test	Adeno Pos.
Nfld./T.-N.	5	0	0	8	0	5	0	0	0	0	0	5	0
P.E.I./Î.-P.-É.	0	0	0	1	0	0	0	0	0	0	0	0	0
N.S./N.-É.	6	0	0	6	0	6	0	0	0	0	0	6	1
N.B./N.-B.	11	0	0	9	0	9	0	0	0	0	0	9	1
Atlantic/Atlantique	22	0	0	24	0	20	0	0	0	0	0	20	2
Région Nord-Est	0	0	0	4	0	0	0	0	0	0	0	0	0
Québec-Chaudière-Appalaches	23	0	0	31	0	0	0	0	0	0	0	24	2
Centre-du-Québec	3	0	0	7	0	4	0	0	0	0	0	4	0
Montréal-Laval	91	0	0	132	5	123	1	0	0	0	0	122	3
Ouest du Québec	1	0	0	1	1	0	0	0	0	0	0	0	0
Montérégie	0	0	0	2	0	0	0	0	0	0	0	0	0
Province of/de Québec	118	0	0	177	6	127	1	0	0	0	0	150	5
Ottawa P.H.L.	2	0	0	1	0	0	0	0	0	0	0	0	0
CHEO/HEEO - Ottawa	18	0	0	18	0	18	0	0	0	0	0	18	0
Kingston	15	0	0	15	0	15	0	0	0	0	0	15	0
Toronto Medical Laboratory	41	0	0	41	0	41	0	0	0	0	0	41	0
C.P.H.L. - Toronto	89	0	0	93	0	79	0	0	0	1	0	79	2
Sick Kids/Hospital - Toronto	0	0	0	83	0	83	0	0	0	0	0	83	1
Sunnybrook & Women's College HSC	7	0	0	7	0	7	0	0	0	0	0	7	0
Sault Ste. Marie	2	0	0	2	0	2	0	0	0	0	0	2	0
Timmins	5	0	0	5	0	5	0	0	0	0	0	5	0
St. Joseph's - London	-	-	-	-	-	-	-	-	-	-	-	-	-
London P.H.L.	37	0	0	37	0	37	0	0	0	0	0	37	0
Orillia P.H.L.	20	0	0	20	0	20	0	0	0	0	0	20	0
Windsor	14	0	0	14	0	10	0	0	0	0	0	10	0
Thunder Bay	6	0	0	2	0	6	0	0	0	0	0	6	0
Sudbury P.H.L.	6	0	0	6	0	6	0	0	0	0	0	6	0
Hamilton P.H.L.	19	0	0	19	0	0	0	0	0	0	0	0	0
Peterborough P.H.L.	8	0	0	8	0	8	0	0	0	0	0	8	0
Province of/de l'Ontario	289	0	0	371	0	337	0	0	0	1	0	337	3
Manitoba	42	0	0	45	0	41	0	0	0	0	0	41	0
Regina	65	0	0	65	0	65	0	2	0	0	0	65	0
Saskatoon	10	0	0	5	0	10	0	0	0	0	0	10	1
Province of/de la Saskatchewan	75	0	0	70	0	75	0	2	0	0	0	75	1
Calgary	37	0	0	37	0	40	0	0	0	0	1	35	0
Edmonton	173	0	0	189	0	167	0	0	0	0	1	121	3
Province of/de l'Alberta	210	0	0	226	0	207	0	0	0	0	2	156	3
Prairies	327	0	0	341	0	323	0	2	0	0	2	272	4
Vancouver, B.C./C.-B.	35	3	0	35	1	35	0	0	0	0	0	35	0
CANADA	791	3	0	948	7	842	1	2	0	1	2	814	14

Also available at: <http://www.phac-aspc.gc.ca/bid-bmi/dsd-dsm/rvdi-divr/index.html>

Aussi disponible sur le site: http://www.phac-aspc.gc.ca/bid-bmi/dsd-dsm/rvdi-divr/index_f.html

Table 2/Tableau 2

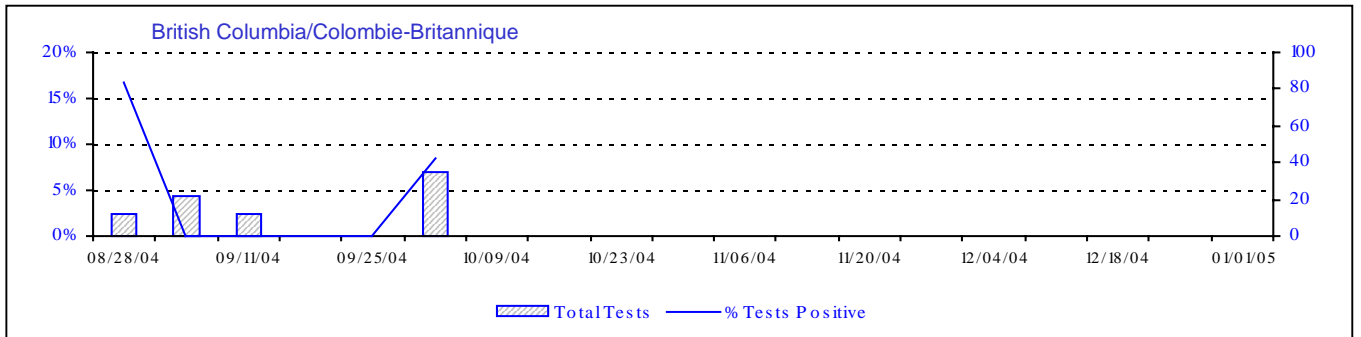
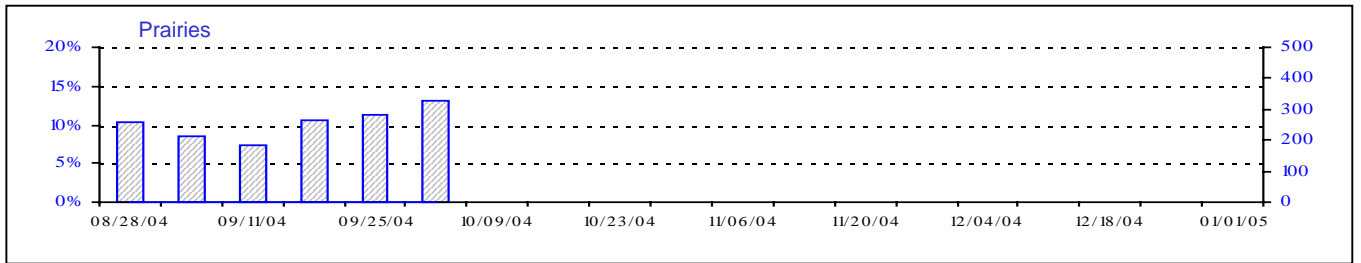
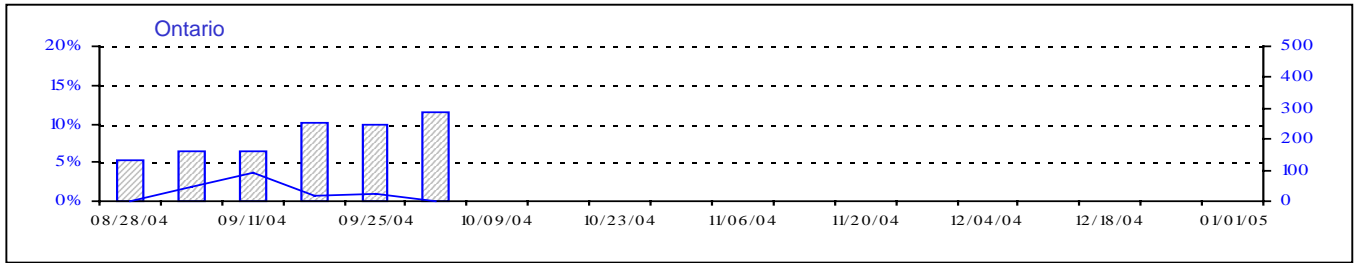
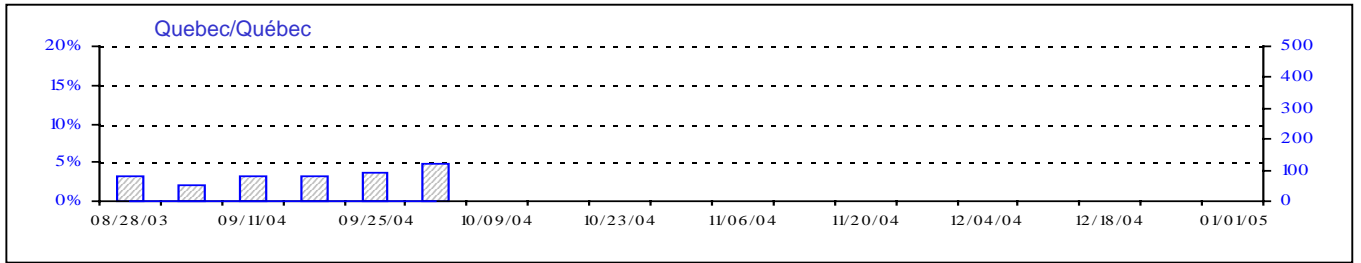
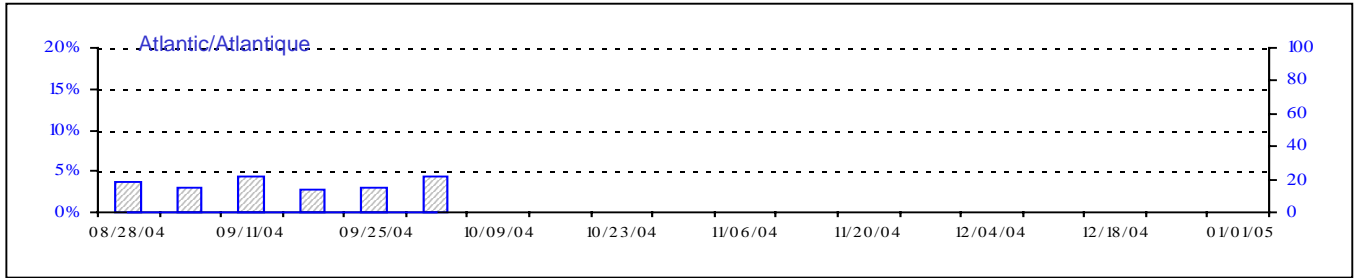
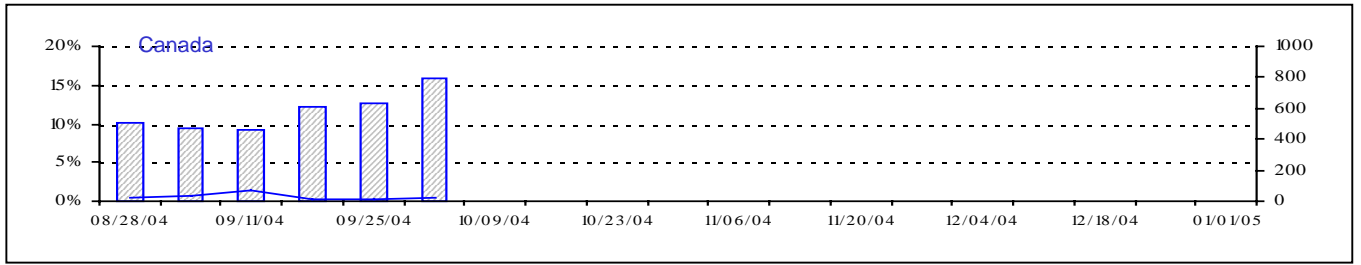
Respiratory Virus Detections/Isolations for the period August 22, 2004 - October 2, 2004
 Détection/isolement de virus des voies respiratoires pour la période du 22 août 2004 - 2 octobre 2004
 (Reporting Weeks 200435 -200440/Code hebdomadaire 200435-200440)

Reporting Laboratory Laboratoire rapporteur	Flu/Grippe Test	Flu/Grippe A Pos.	Flu/Grippe B Pos.	R.S.V. Test	R.S.V. Pos.	PIV Test	PIV 1 Pos.	PIV 2 Pos.	PIV 3 Pos.	PIV 4 Pos.	Other/Autre PIV Pos.	Adeno Test	Adeno Pos.
Nfld./T.-N.	19	0	0	25	1	16	0	0	0	0	0	16	0
P.E.I./Î.-P.-É.	0	0	0	1	0	0	0	0	0	0	0	0	0
N.S./N.-É.	29	0	0	29	0	29	0	0	1	0	0	29	1
N.B./N.-B.	58	0	0	48	0	42	0	0	0	0	0	42	2
Atlantic/Atlantique	106	0	0	103	1	87	0	0	1	0	0	87	3
Région Nord-Est	8	0	0	27	1	0	0	0	0	0	0	0	0
Québec-Chaudière-Appalaches	126	0	0	135	0	102	0	0	0	0	0	128	5
Centre-du-Québec	13	0	0	25	0	20	0	0	0	0	0	20	0
Montréal-Laval	359	0	0	436	7	419	2	0	0	0	0	419	15
Ouest du Québec	3	0	0	8	1	0	0	0	0	0	0	0	0
Montréal	1	0	0	7	1	0	0	0	0	0	0	0	0
Province of/de Québec	510	0	0	638	10	541	2	0	0	0	0	567	20
Ottawa P.H.L.	14	0	0	4	0	0	0	0	0	0	0	0	0
CHEO/HEEO - Ottawa	135	9	0	135	0	135	0	0	0	0	0	135	2
Kingston	63	1	1	63	0	63	0	0	1	0	0	63	0
Toronto Medical Laboratory	228	0	0	201	5	198	0	0	0	0	0	170	0
C.P.H.L. - Toronto	401	1	1	409	3	360	0	0	5	1	0	360	4
Sick Kids' Hospital - Toronto	0	0	0	172	1	375	2	0	1	0	0	375	3
Sunnybrook & Women's College HSC	31	0	0	31	0	31	0	0	0	0	0	31	0
Sault Ste. Marie	6	0	0	6	0	6	0	0	0	0	0	6	0
Timmins	12	0	0	12	0	12	0	0	0	0	0	12	0
St.Joseph's-London	24	0	0	24	0	24	0	0	0	0	0	24	0
London P.H.L.	123	0	0	123	0	123	0	0	0	0	0	123	0
Orillia P.H.L.	50	0	0	50	0	50	0	0	0	0	0	50	3
Windsor	61	0	0	61	0	57	0	0	0	0	0	57	0
Thunder Bay	23	0	0	13	0	23	0	0	1	0	0	23	0
Sudbury P.H.L.	14	0	0	14	0	14	0	0	0	0	0	14	0
Hamilton P.H.L.	28	0	0	28	0	0	0	0	0	0	0	0	0
Peterborough P.H.L.	29	0	0	29	0	29	0	0	0	0	0	29	0
Province of/de l'Ontario	1242	11	2	1375	9	1500	2	0	8	1	0	1472	12
Manitoba	216	0	0	228	1	215	0	0	2	0	0	215	5
Regina	318	0	0	318	3	318	0	6	0	0	0	318	5
Saskatoon	66	0	0	51	0	66	0	0	0	0	3	66	1
Province of/de la Saskatchewan	384	0	0	369	3	384	0	6	0	0	3	384	6
Calgary	194	0	0	194	0	213	0	0	0	0	7	187	7
Edmonton	740	0	0	802	0	712	0	0	0	0	5	517	11
Province of/de l'Alberta	934	0	0	996	0	925	0	0	0	0	12	704	18
Prairies	1534	0	0	1593	4	1524	0	6	2	0	15	1303	29
Vancouver, B.C./C.-B.	81	5	0	81	3	81	1	0	0	0	0	81	0
CANADA	3473	16	2	3790	27	3733	5	6	11	1	15	3510	64

Also available at: <http://www.phac-aspc.gc.ca/bid-bmi/dsd-dsm/rvdi-divr/index.html>

Aussi disponible sur le site: http://www.phac-aspc.gc.ca/bid-bmi/dsd-dsm/rvdi-divr/index_f.html

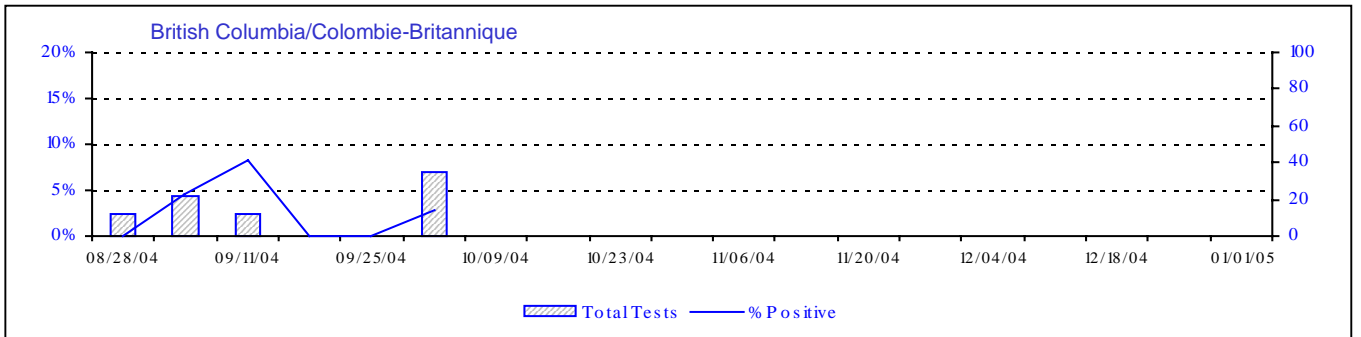
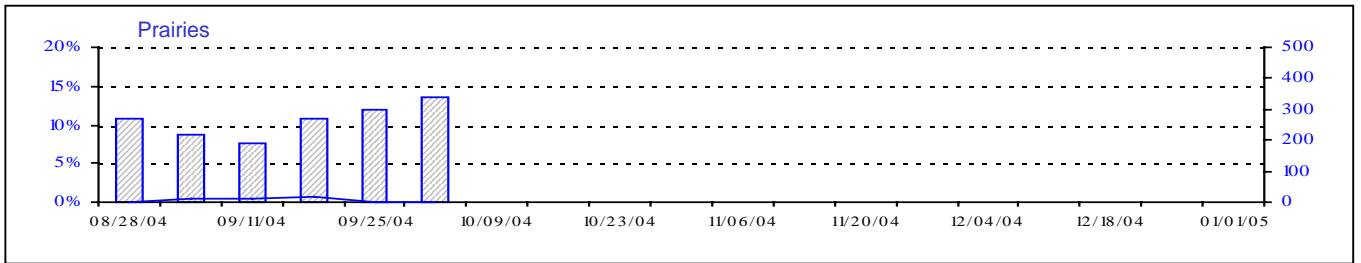
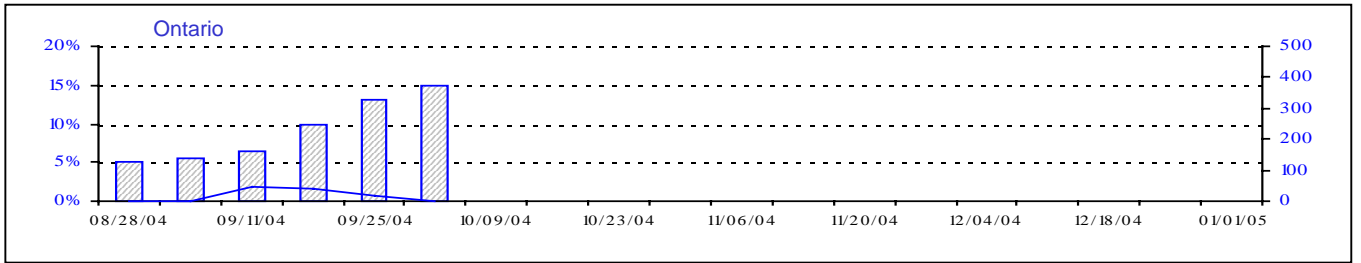
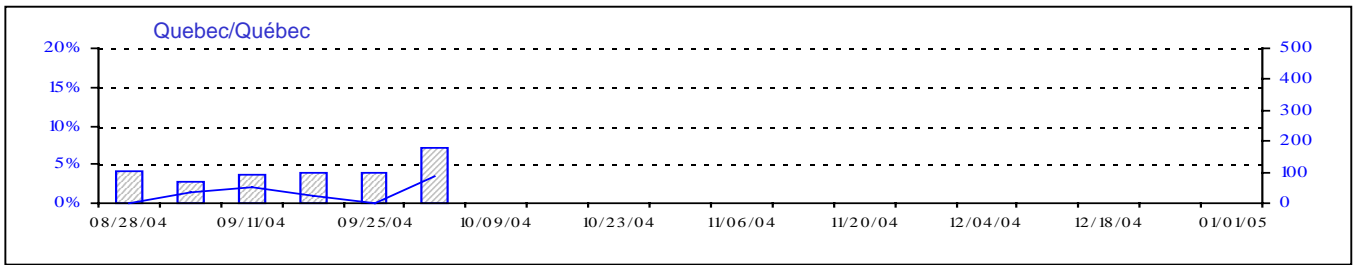
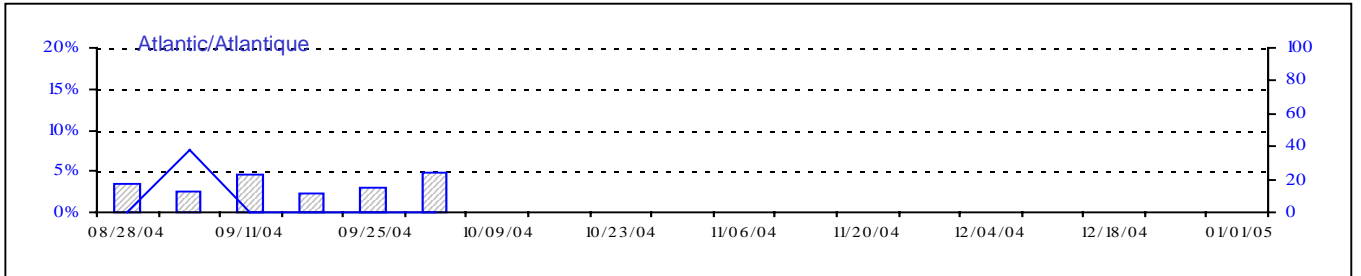
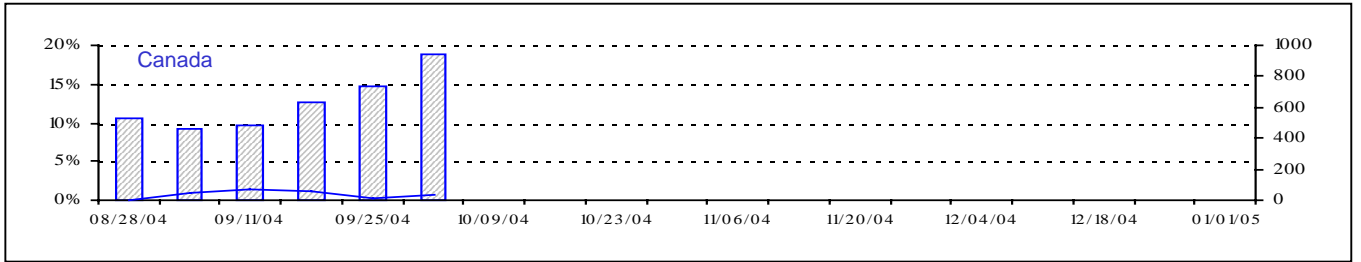
Positive Influenza Tests (%) in Canada by Region by Week of Report
 Détection du virus grippal au Canada, tests positifs (%) par région
 par semaine de déclaration



▨ TotalTests — % Tests Positive

Total Tests Total

Positive RSV Tests (%) in Canada by Region by Week of Report
 Détection du virus respiratoire syncytial au Canada, tests positifs (%) par région
 par semaine de déclaration

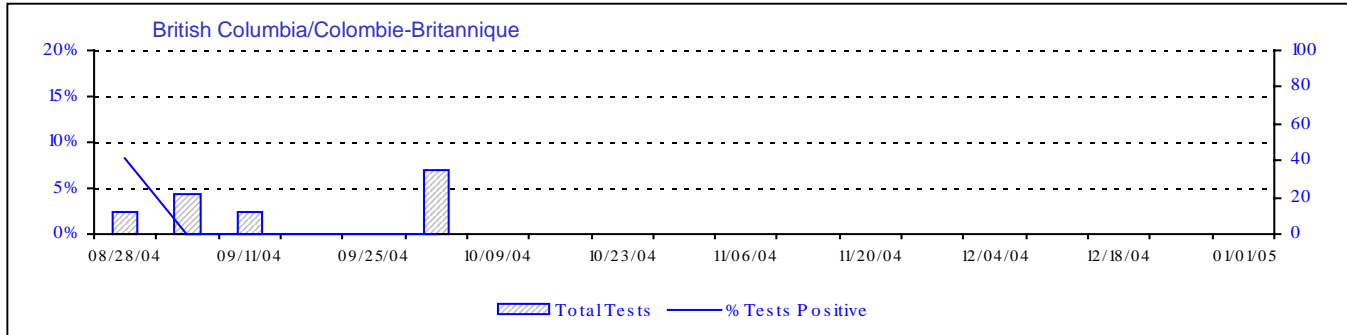
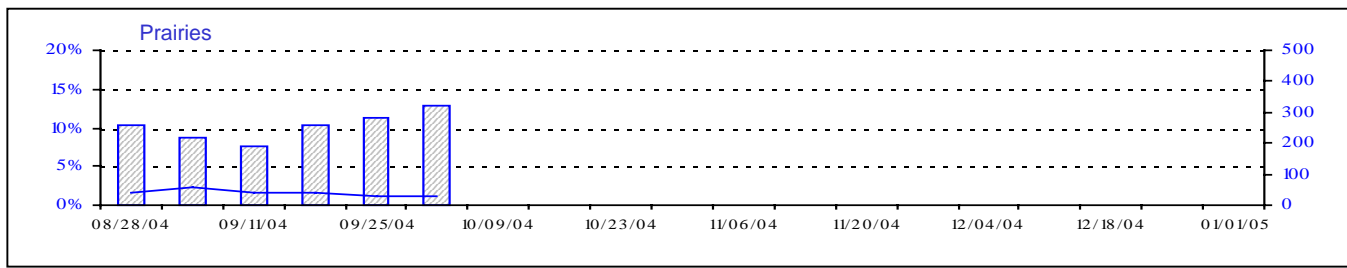
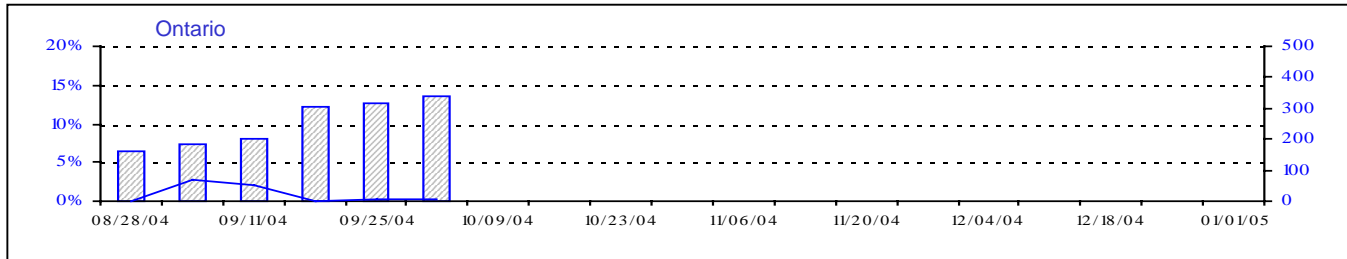
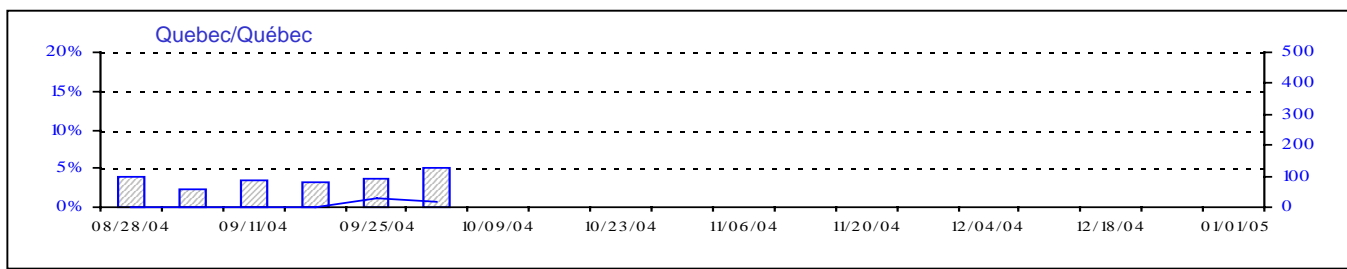
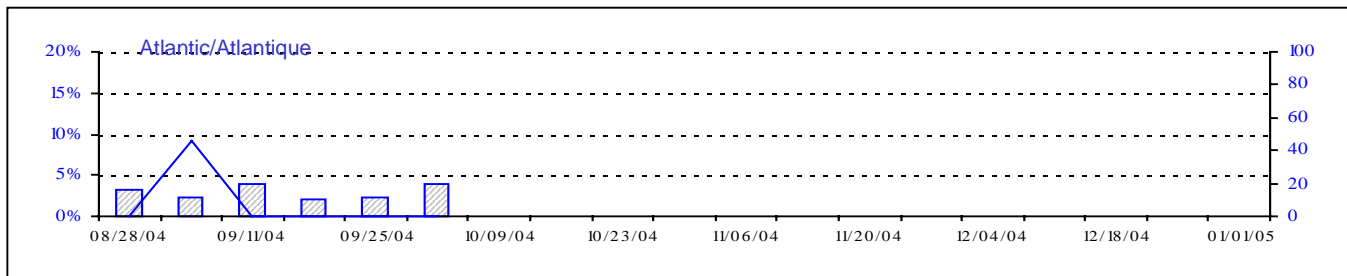
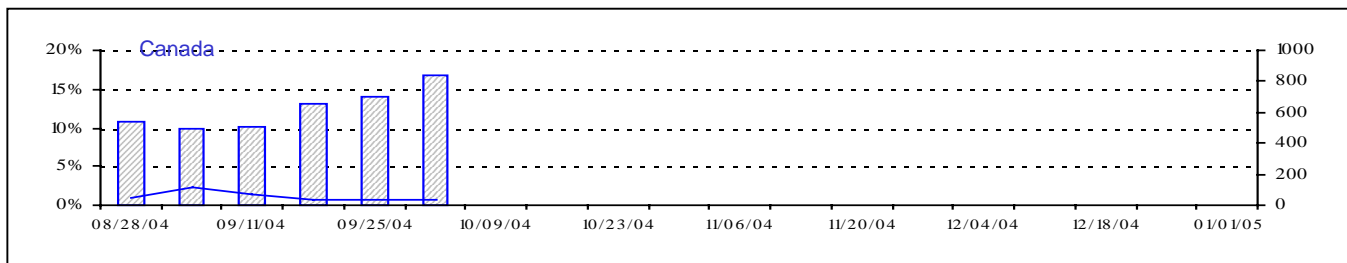


▨ Total Tests — % Positive

Total Tests Total

Positive Parainfluenza Tests (%) in Canada by Region by Week of Report

Détection du virus parainfluenza au Canada, tests positifs (%) par région par semaine de déclaration



Total Tests
 % Tests Positive

Total Tests Total

Positive Adenovirus Tests (%) in Canada by Region by Week of Report

Détection des adénovirus au Canada, tests positifs (%) par région par semaine de déclaration

