

Table 1/Tableau 1

Respiratory Virus Detections/Isolations for the week ending October 30, 2004 (Reporting Week 200444)  
 Détection/isolement de virus des voies respiratoires pour la semaine se terminant le 30 octobre 2004(Code hebdomadaire 200444)

Reporting Laboratory Laboratoire rapporteur	Flu/Grippe Test	Flu/Grippe A Pos.	Flu/Grippe B Pos.	R.S.V. Test	R.S.V. Pos.	PIV Test	PIV 1 Pos.	PIV 2 Pos.	PIV 3 Pos.	PIV 4 Pos.	Other/Autre PIV Pos.	Adeno Test	Adeno Pos.
Nfld./T.-N.	8	0	0	9	0	1	0	0	0	0	0	0	0
P.E.I./Î.-P.-É.	3	0	0	3	0	3	0	0	0	0	0	3	0
N.S./N.-É.	13	0	0	13	0	13	0	0	0	0	0	13	0
N.B./N.-B.	18	0	0	13	0	12	0	0	0	0	0	12	1
Atlantic/Atlantique	42	0	0	38	0	29	0	0	0	0	0	28	1
Région Nord-Est	0	0	0	3	0	0	0	0	0	0	0	0	0
Québec-Chaudière-Appalaches	19	0	0	22	0	14	0	0	0	0	0	16	3
Centre-du-Québec	5	0	0	7	0	4	0	0	0	0	0	4	0
Montréal-Laval	122	0	0	159	3	133	0	0	1	0	0	133	9
Ouest du Québec	6	0	0	8	1	0	0	0	0	0	0	0	0
Montérégie	2	0	0	0	0	0	0	0	0	0	0	0	0
Province of/de Québec	154	0	0	199	4	151	0	0	1	0	0	153	12
Ottawa P.H.L.	0	0	0	0	0	0	0	0	0	0	0	0	0
CHEO/HEEO - Ottawa	-	-	-	-	-	-	-	-	-	-	-	-	-
Kingston	15	0	0	15	0	15	0	0	0	0	0	15	0
Toronto Medical Laboratory	40	0	0	40	0	40	0	0	0	0	0	40	0
C.P.H.L. - Toronto	170	2	0	178	0	151	0	0	1	0	0	151	0
Sick Kids/Hospital - Toronto	87	1	0	87	1	87	0	0	0	0	0	87	0
Sunnybrook & Women's College HSC	5	0	0	5	0	5	0	0	0	0	0	5	0
Sault Ste. Marie	2	0	0	2	0	2	0	0	0	0	0	2	0
Timmins	23	0	0	23	0	23	0	0	0	0	0	23	0
St. Joseph's - London	7	0	0	7	0	7	0	0	0	0	0	7	0
London P.H.L.	42	0	0	42	0	42	0	0	0	0	0	42	1
Orillia P.H.L.	19	0	0	19	0	19	0	0	0	0	0	19	1
Windsor	17	0	0	17	0	16	0	0	0	0	0	16	0
Thunder Bay	6	0	0	2	0	6	0	0	0	0	0	6	0
Sudbury P.H.L.	7	0	0	7	0	7	0	0	0	0	0	7	0
Hamilton P.H.L.	-	-	-	-	-	-	-	-	-	-	-	-	-
Peterborough P.H.L.	12	0	0	12	0	12	0	0	0	0	0	12	0
Province of/de l'Ontario	452	3	0	456	1	432	0	0	1	0	0	432	2
Manitoba	49	0	0	54	0	49	0	0	2	0	0	49	0
Regina	73	3	0	73	0	73	0	1	0	0	0	73	3
Saskatoon	11	0	0	7	0	11	0	0	0	0	0	11	0
Province of/de la Saskatchewan	84	3	0	80	0	84	0	1	0	0	0	84	3
Calgary	27	0	0	27	0	27	0	0	0	0	0	27	1
Edmonton	227	0	0	227	1	203	0	0	0	0	0	150	9
Province of/de l'Alberta	254	0	0	254	1	230	0	0	0	0	0	177	10
Prairies	387	3	0	388	1	363	0	1	2	0	0	310	13
Vancouver, B.C./C.-B.	73	8	0	73	0	73	0	2	0	0	0	73	2
CANADA	1108	14	0	1154	6	1048	0	3	4	0	0	996	30

Also available at: <http://www.phac-aspc.gc.ca/bid-bmi/dsd-dsm/rvdi-divr/index-html>

Aussi disponible sur le site: [http://www.phac-aspc.gc.ca/bid-bmi/dsd-dsm/rvdi-divr/index\\_f.html](http://www.phac-aspc.gc.ca/bid-bmi/dsd-dsm/rvdi-divr/index_f.html)

Table 2/Tableau 2

Respiratory Virus Detections/Isolations for the period August 22, 2004 - October 30, 2004  
 Détection/isolement de virus des voies respiratoires pour la période du 22 août 2004 - 30 octobre 2004  
 (Reporting Weeks 200435 -200444/Code hebdomadaire 200435-200444)

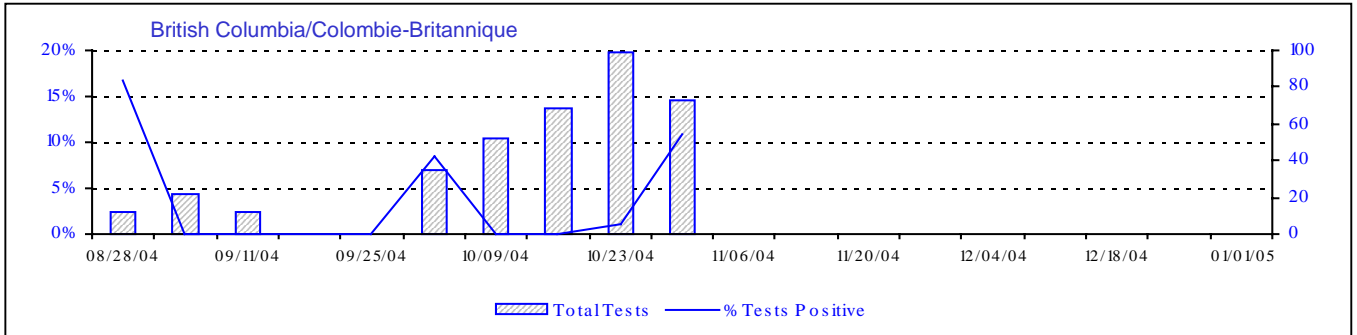
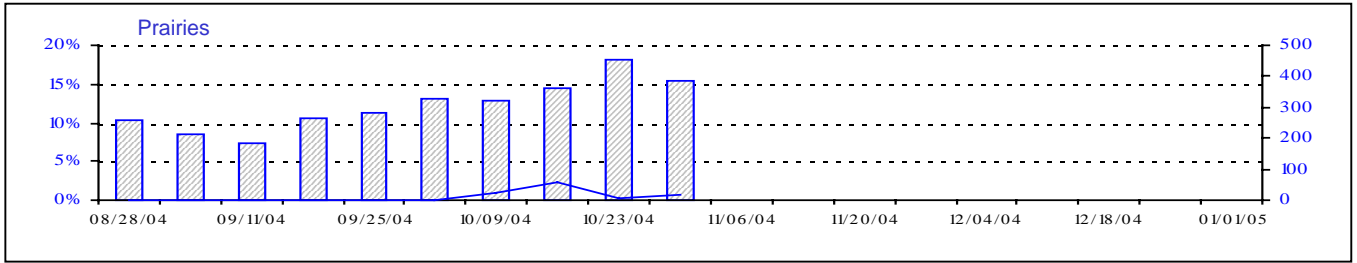
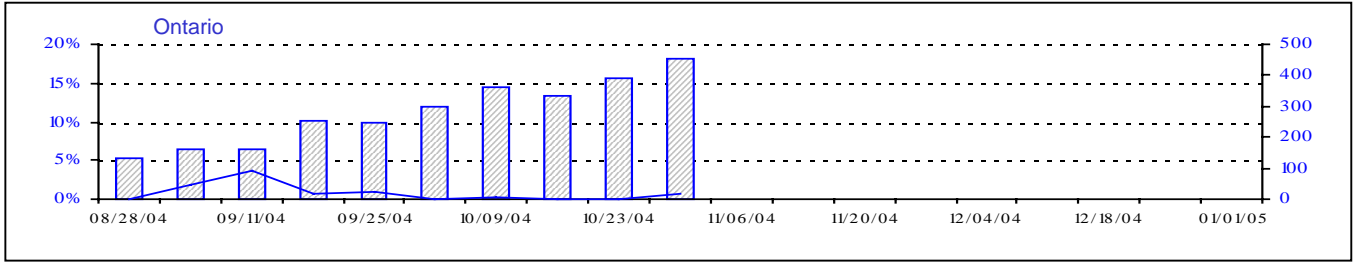
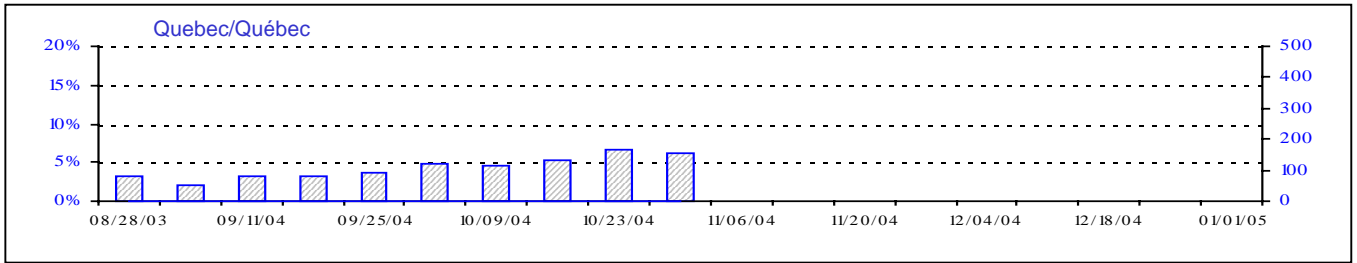
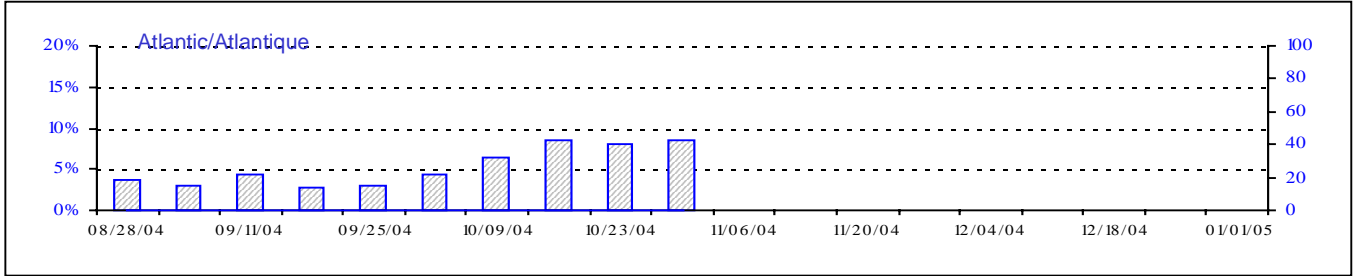
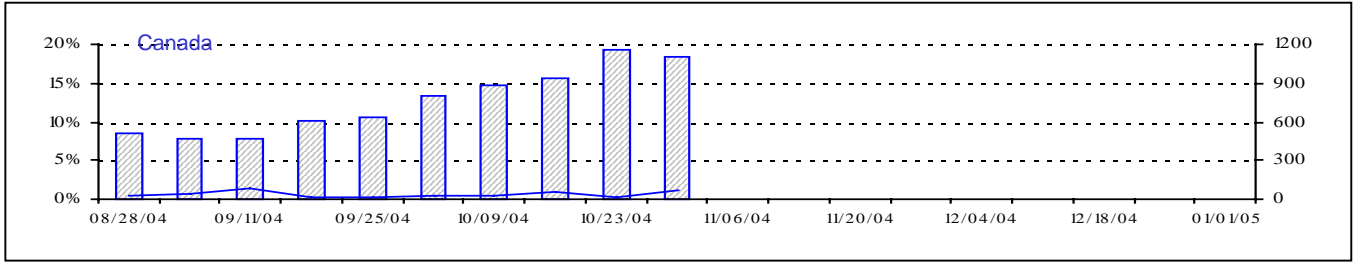
Reporting Laboratory Laboratoire rapporteur	Flu/Grippe Test	Flu/Grippe A Pos.	Flu/Grippe B Pos.	R.S.V. Test	R.S.V. Pos.	PIV Test	PIV 1 Pos.	PIV 2 Pos.	PIV 3 Pos.	PIV 4 Pos.	Other/Autre PIV Pos.	Adeno Test	Adeno Pos.
Nfld./T.-N.	48	0	0	56	3	21	0	0	0	0	0	19	0
P.E.I./Î.-P.-É.	5	0	0	6	0	5	0	0	0	0	0	5	0
N.S./N.-É.	81	0	0	81	0	81	0	0	1	0	0	81	1
N.B./N.-B.	129	0	0	95	0	88	0	0	0	0	0	88	6
Atlantic/Atlantique	263	0	0	238	3	195	0	0	1	0	0	193	7
Région Nord-Est	15	0	0	50	1	0	0	0	0	0	0	0	0
Québec-Chaudière-Appalaches	227	0	0	303	0	197	0	0	0	0	0	238	13
Centre-du-Québec	33	0	0	47	0	33	0	0	0	0	0	33	0
Montréal-Laval	775	0	0	996	23	901	5	0	4	1	0	893	42
Ouest du Québec	23	0	0	35	3	0	0	0	0	0	0	0	0
Montréal	3	0	0	11	1	0	0	0	0	0	0	0	0
Province of/de Québec	1076	0	0	1442	28	1131	5	0	4	1	0	1164	55
Ottawa P.H.L.	17	0	0	4	0	0	0	0	0	0	0	0	0
CHEO/HEEO - Ottawa	282	9	0	282	20	232	0	0	0	0	0	282	2
Kingston	126	1	1	126	0	126	0	0	1	0	0	126	1
Toronto Medical Laboratory	377	0	0	350	5	347	0	0	0	0	0	319	0
C.P.H.L. - Toronto	906	3	1	941	4	809	1	0	6	1	1	809	5
Sick Kids' Hospital - Toronto	233	2	0	458	6	661	3	1	1	0	0	661	7
Sunnybrook & Women's College HSC	57	0	0	57	0	57	0	0	0	0	0	57	0
Sault Ste. Marie	16	0	0	16	0	16	0	0	0	0	0	16	0
Timmins	47	0	0	47	0	47	0	0	0	0	0	47	0
St. Joseph's-London	48	0	0	48	0	48	0	0	0	0	0	48	1
London P.H.L.	263	0	0	263	0	263	0	1	0	0	0	263	7
Orillia P.H.L.	101	0	0	101	0	101	0	0	0	0	0	101	4
Windsor	102	0	0	106	0	97	0	0	0	0	0	97	0
Thunder Bay	40	0	0	17	0	40	0	0	1	0	0	40	0
Sudbury P.H.L.	38	0	0	38	0	38	0	0	0	0	0	38	0
Hamilton P.H.L.	60	0	0	28	0	0	0	0	0	0	0	0	0
Peterborough P.H.L.	72	0	0	72	0	72	0	1	0	0	0	72	0
Province of/de l'Ontario	2785	15	2	2954	35	2954	4	3	9	1	1	2976	27
Manitoba	391	0	0	414	2	390	1	0	8	0	0	390	9
Regina	620	5	0	620	3	620	0	11	0	0	0	620	13
Saskatoon	113	1	0	90	0	113	0	0	0	0	3	113	2
Province of/de la Saskatchewan	733	6	0	710	3	733	0	11	0	0	3	733	15
Calgary	379	5	0	379	0	400	0	0	0	0	7	363	17
Edmonton	1557	4	0	1627	1	1450	0	0	0	0	7	1055	43
Province of/de l'Alberta	1936	9	0	2006	1	1850	0	0	0	0	14	1418	60
Prairies	3060	15	0	3130	6	2973	1	11	8	0	17	2541	84
Vancouver, B.C./C.-B.	374	14	0	374	4	374	1	3	0	0	0	374	6
CANADA	7558	44	2	8138	76	7627	11	17	22	2	18	7248	179

Also available at: <http://www.phac-aspc.gc.ca/bid-bmi/dsd-dsm/rvdi-divr/index.html>

Aussi disponible sur le site: [http://www.phac-aspc.gc.ca/bid-bmi/dsd-dsm/rvdi-divr/index\\_f.html](http://www.phac-aspc.gc.ca/bid-bmi/dsd-dsm/rvdi-divr/index_f.html)

# Positive Influenza Tests (%) in Canada by Region by Week of Report

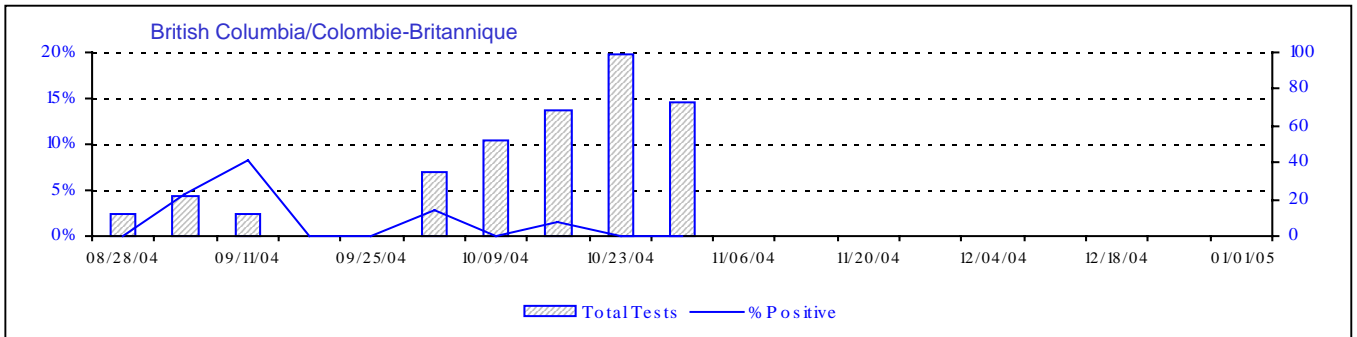
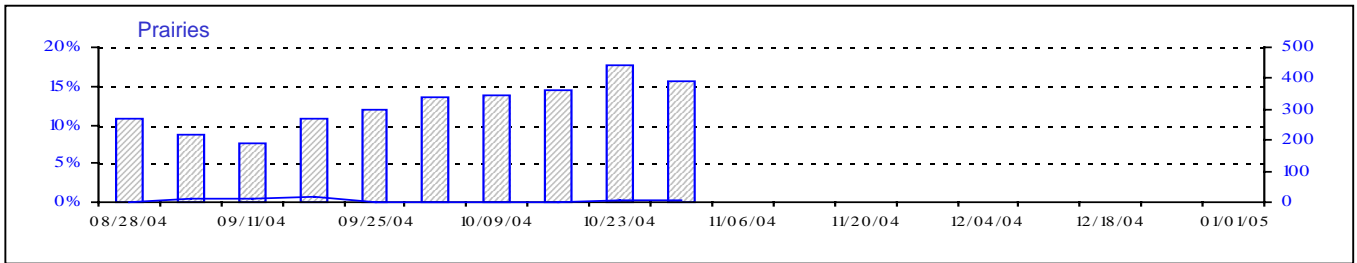
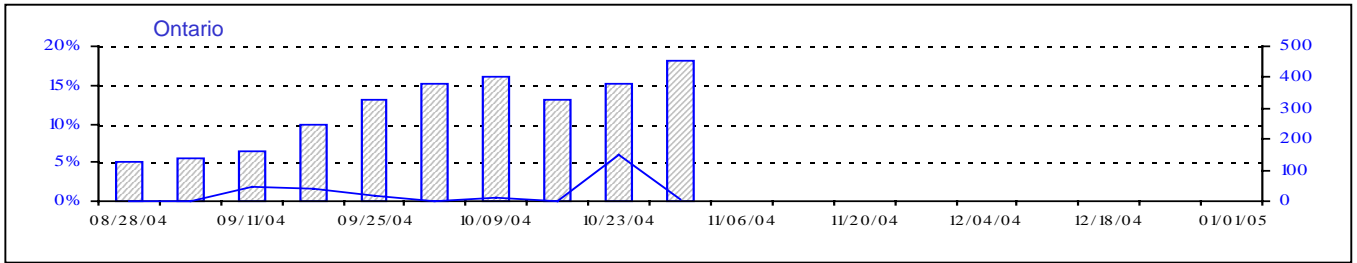
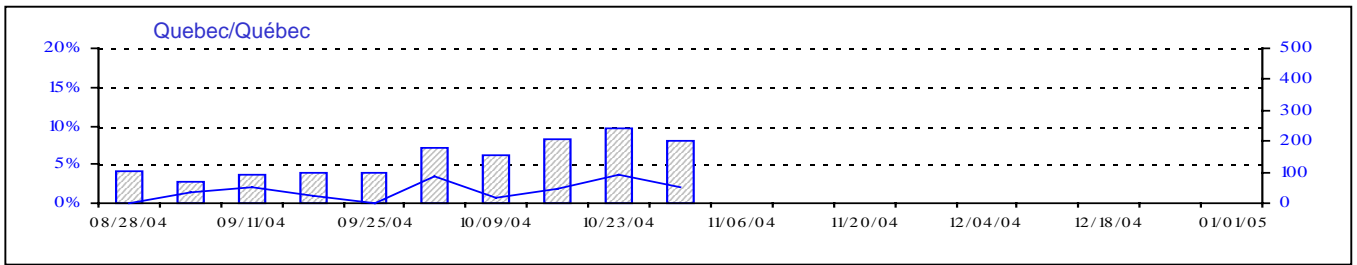
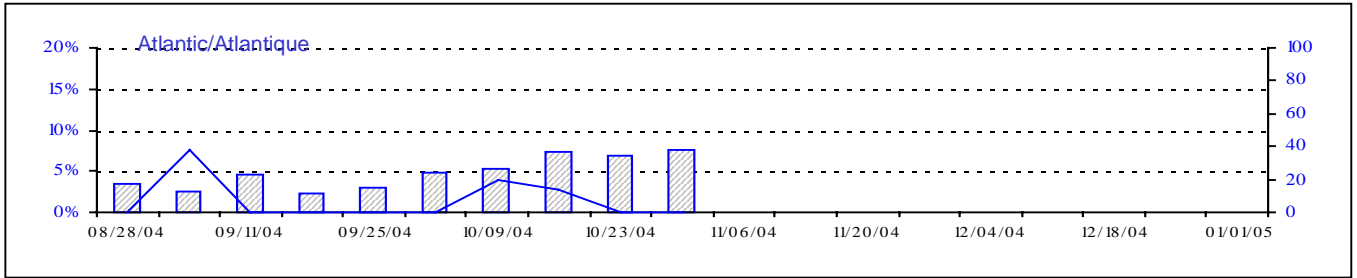
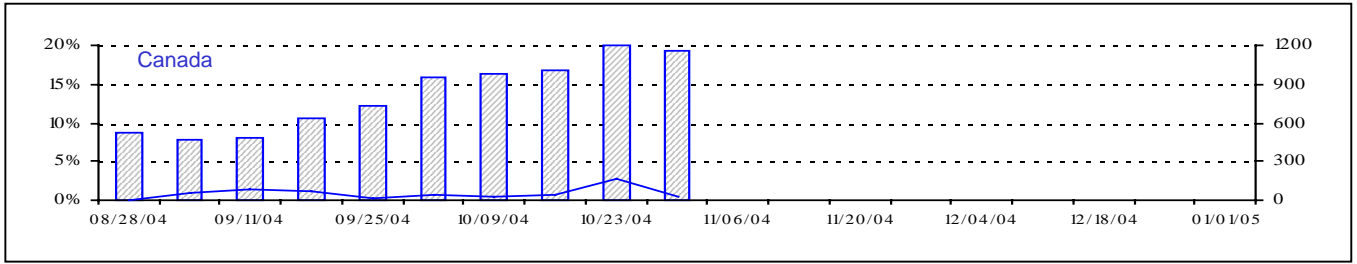
## Détection du virus grippal au Canada, tests positifs (%) par région par semaine de déclaration



Total Tests
  % Tests Positive

Total Tests Total

Positive RSV Tests (%) in Canada by Region by Week of Report  
 Détection du virus respiratoire syncytial au Canada, tests positifs (%) par région  
 par semaine de déclaration

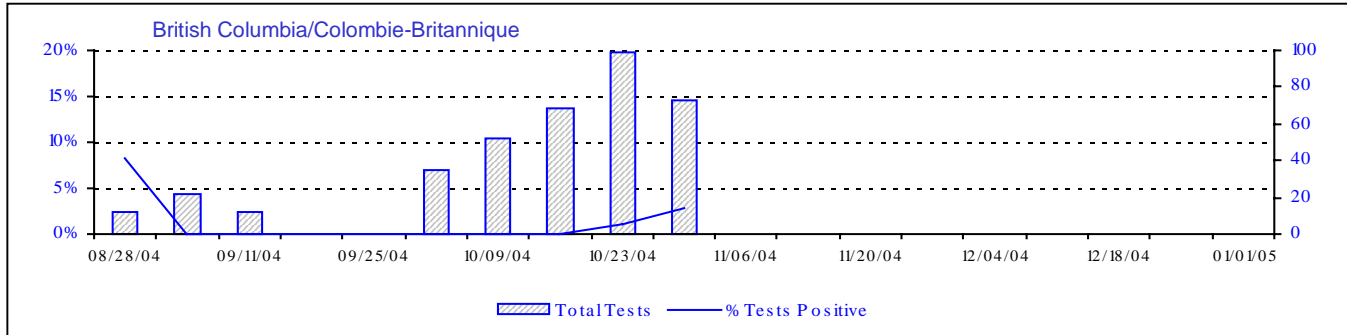
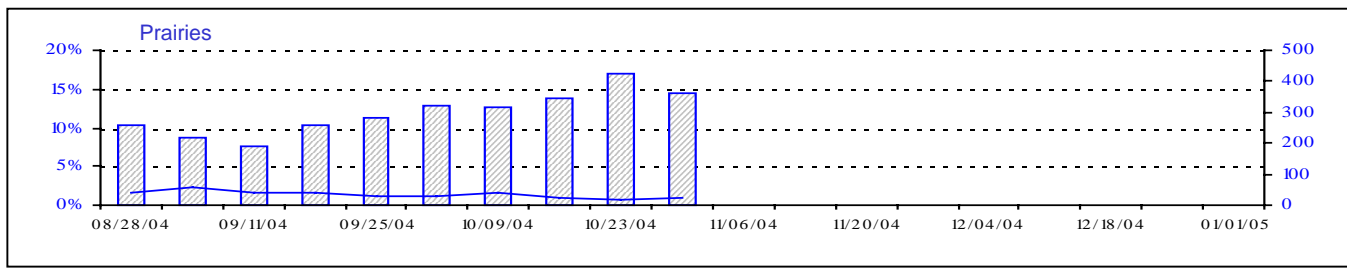
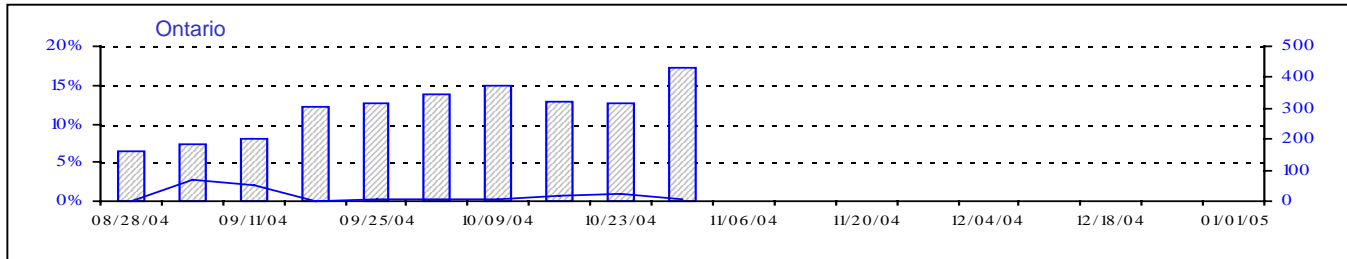
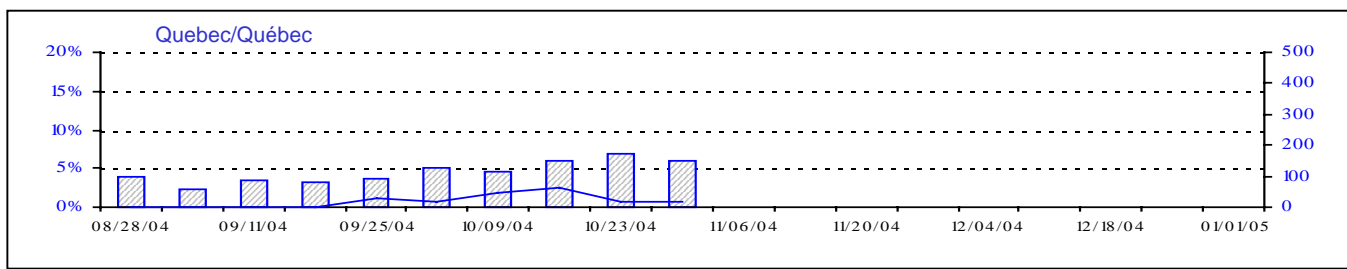
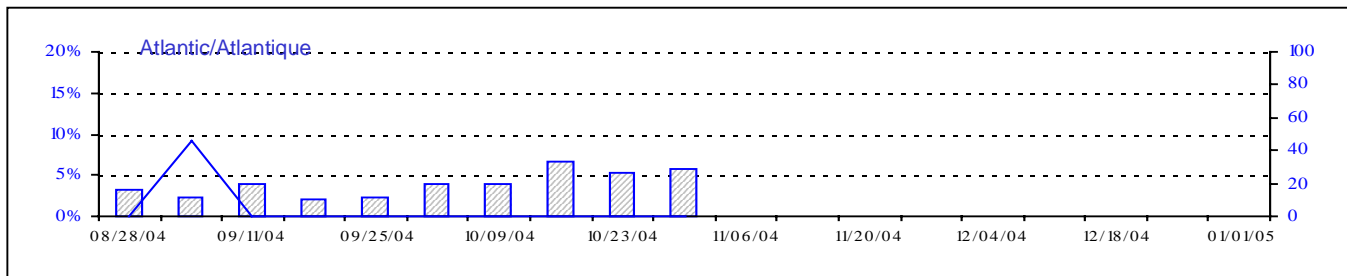
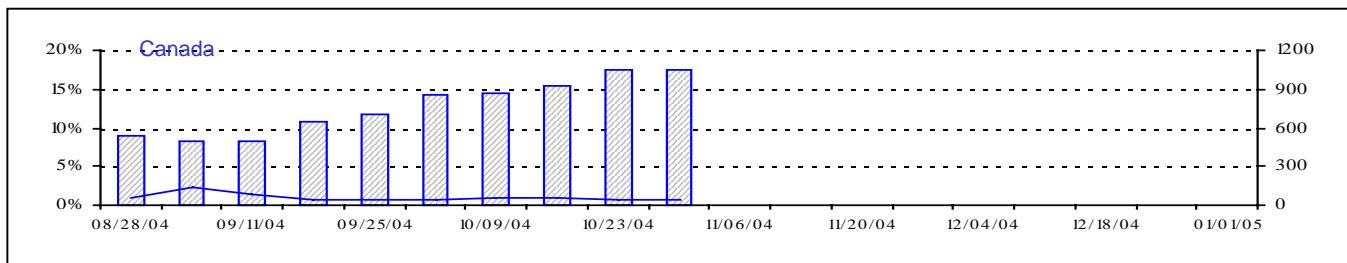


Total Tests Total

▨ Total Tests — % Positive

# Positive Parainfluenza Tests (%) in Canada by Region by Week of Report

## Détection du virus parainfluenza au Canada, tests positifs (%) par région par semaine de déclaration



▨ Total Tests — % Tests Positive

Total Tests Total

