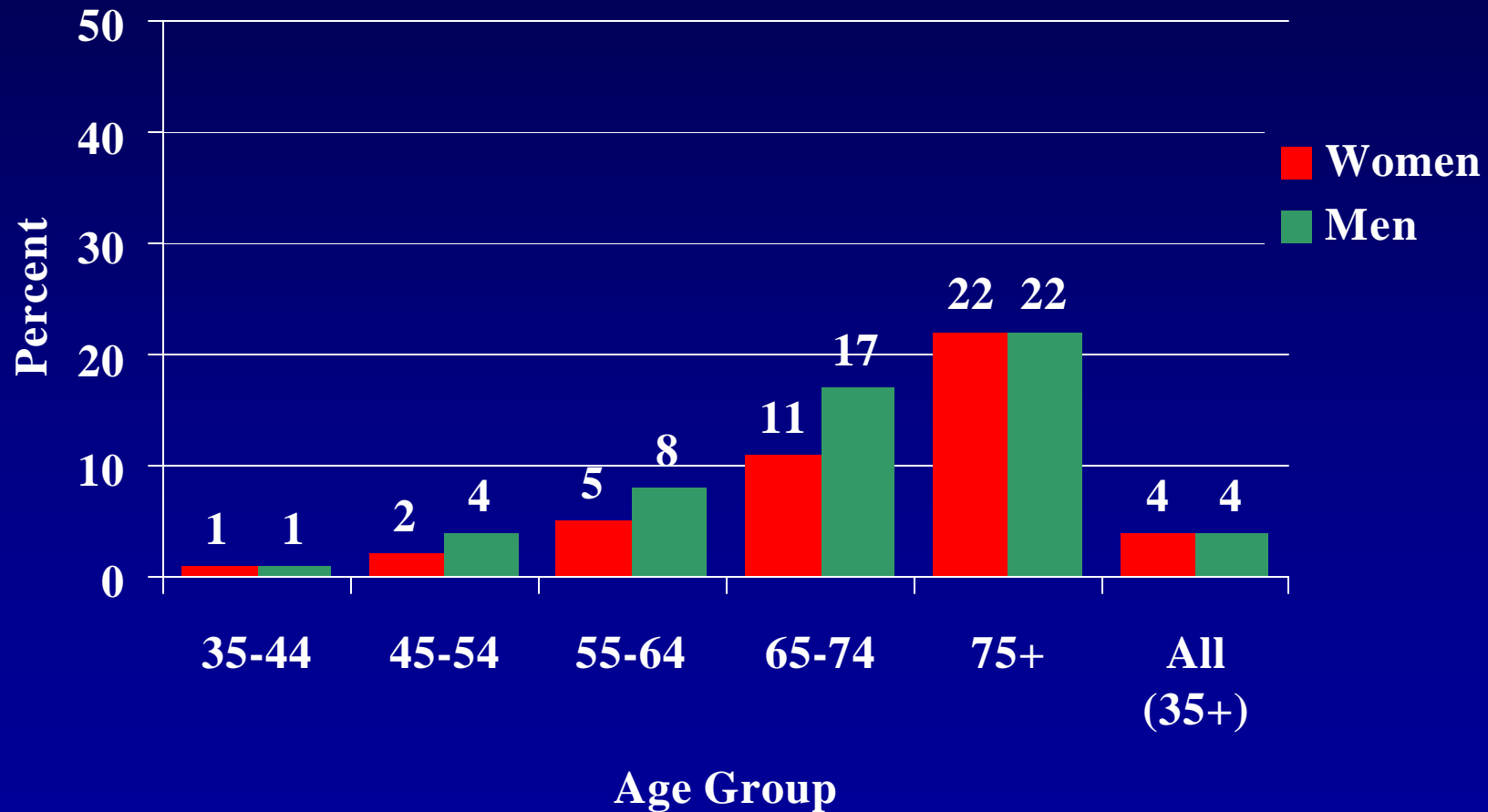
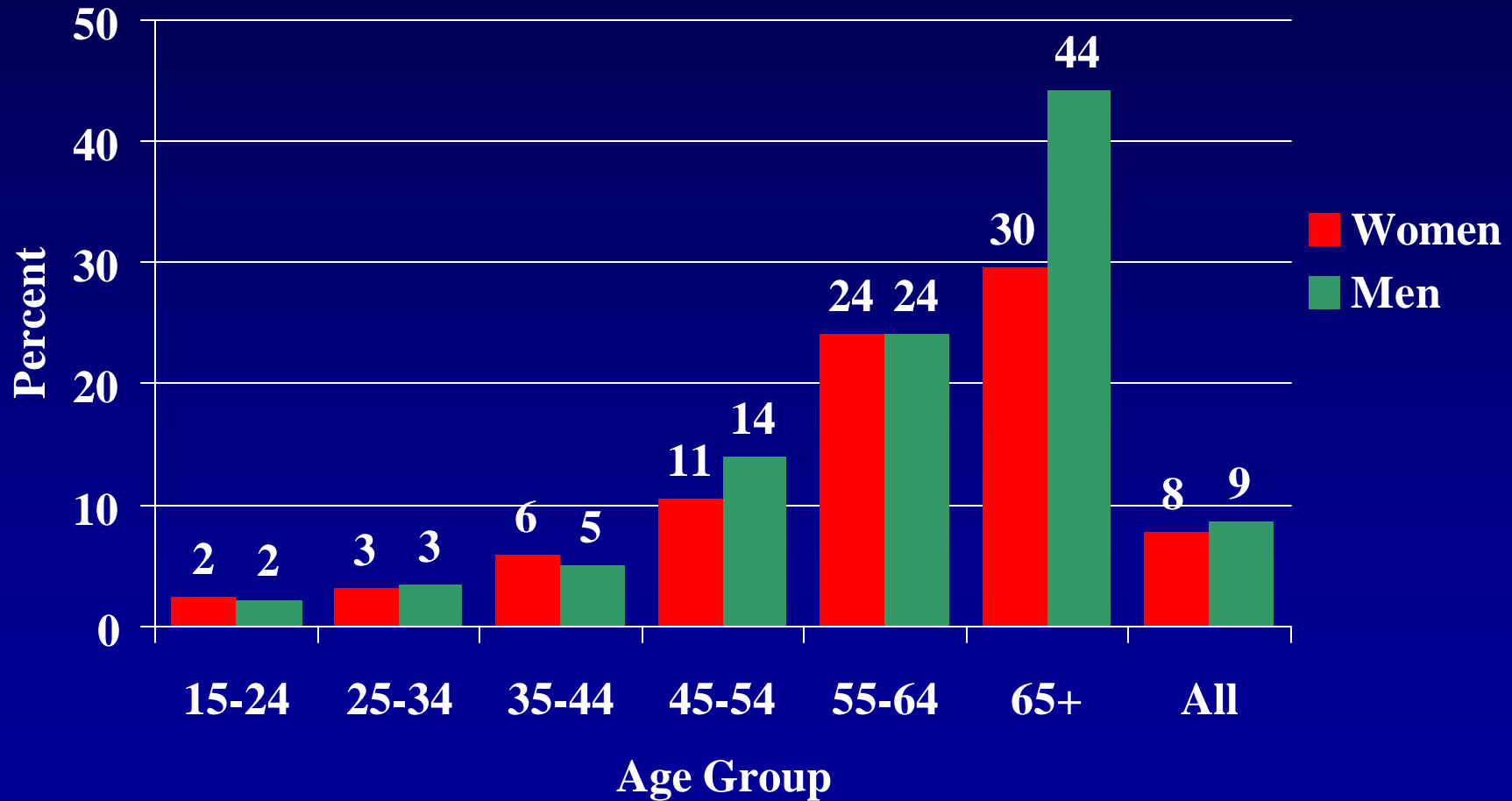


Figure 3-1 Proportion of adults who report having heart problems by age group and sex, Canada, 1996/97.



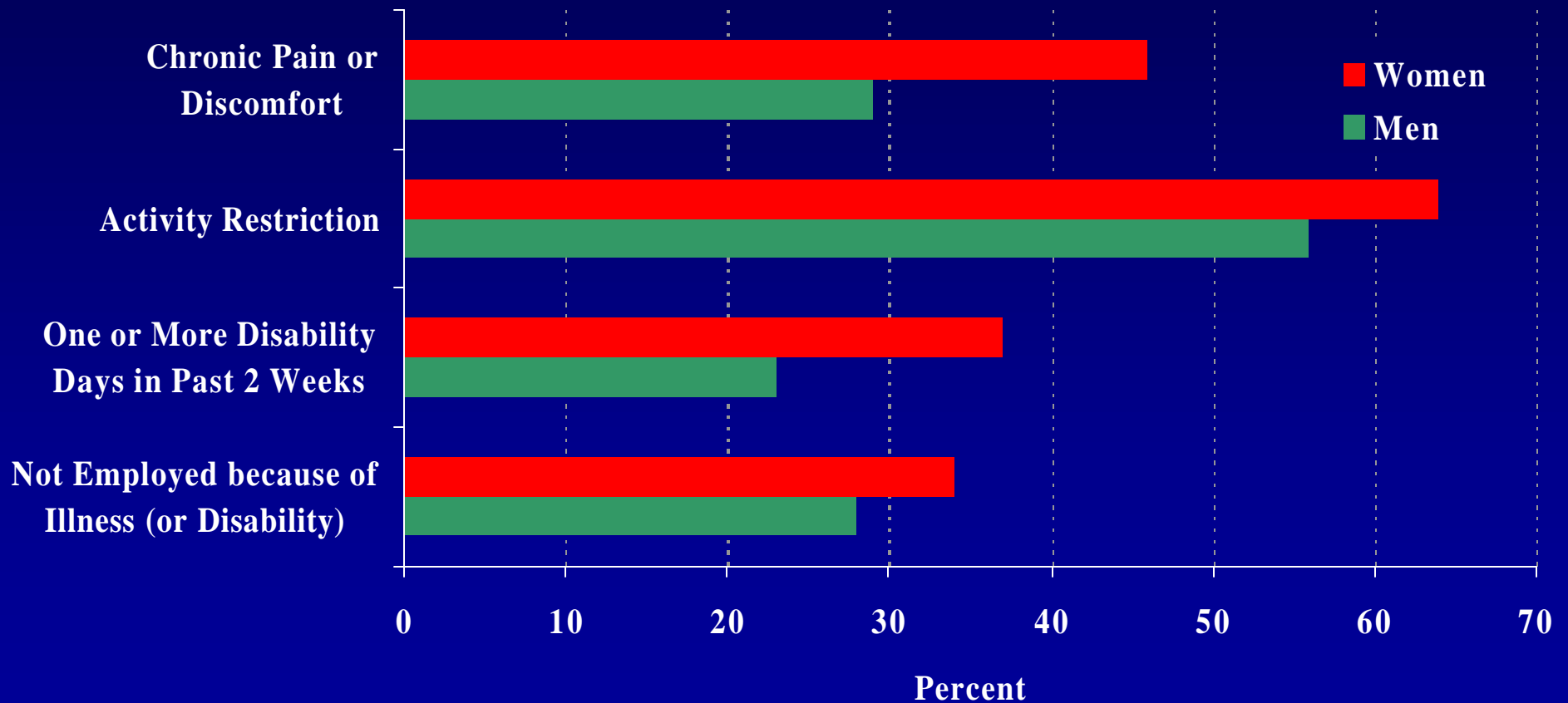
Source: Statistics Canada, National Population Health Survey, 1996/97.

Figure 3-2 Proportion of First Nations and Inuit adults who report having heart problems by age group and sex, Canada, 1997.



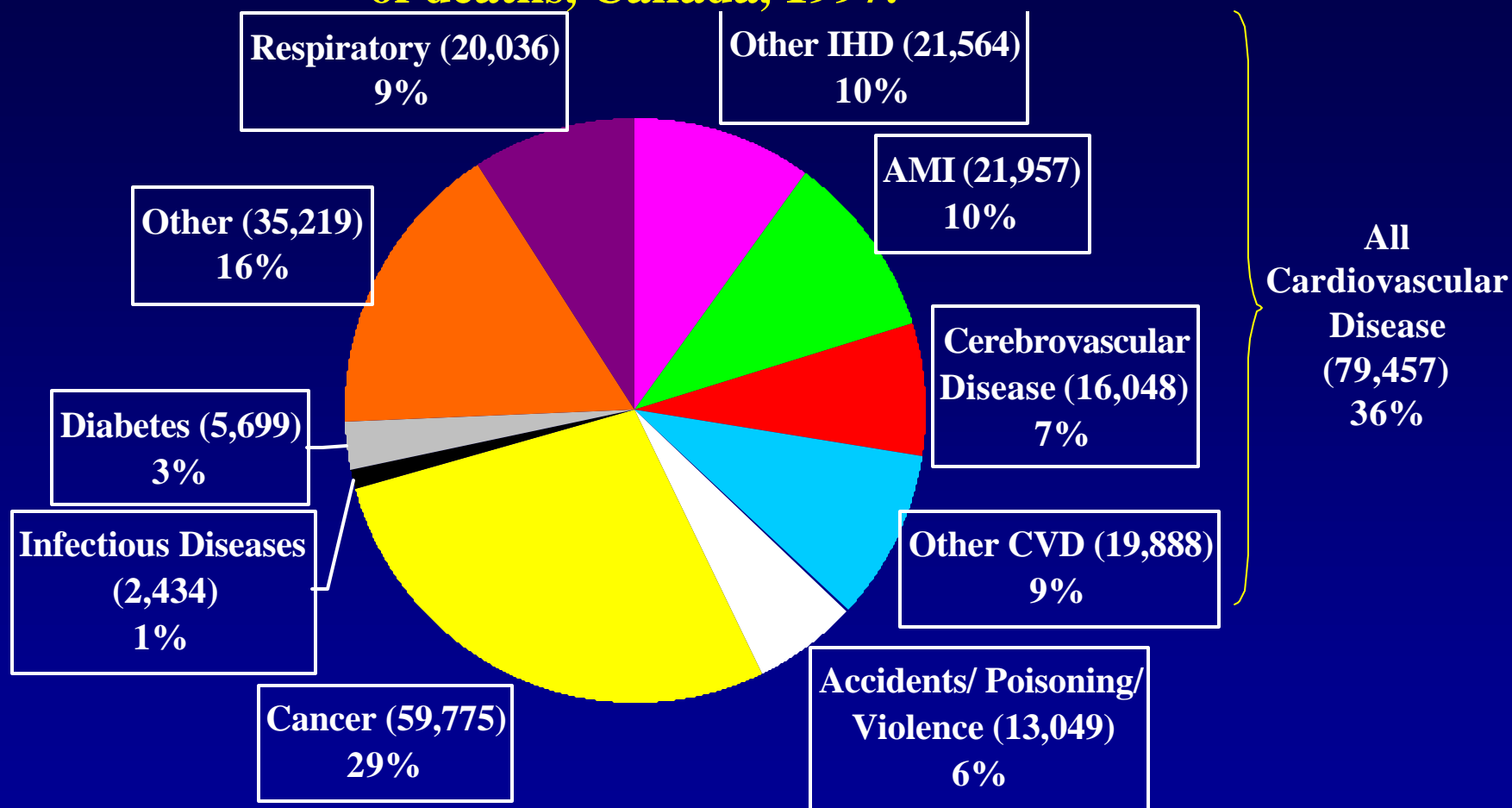
Source: Assembly of First Nations, National Steering Committee, First Nations and Inuit Regional Health Survey 1997.

Figure 3-3 Proportion of population aged 35 to 64 with self-reported heart disease who have chronic pain, activity restriction, disability, or unemployment, Canada, 1996/97.



Source: Statistics Canada, NPHS, 1996/97

Figure 3-4 Leading causes of death, number and percentage of deaths, Canada, 1997.

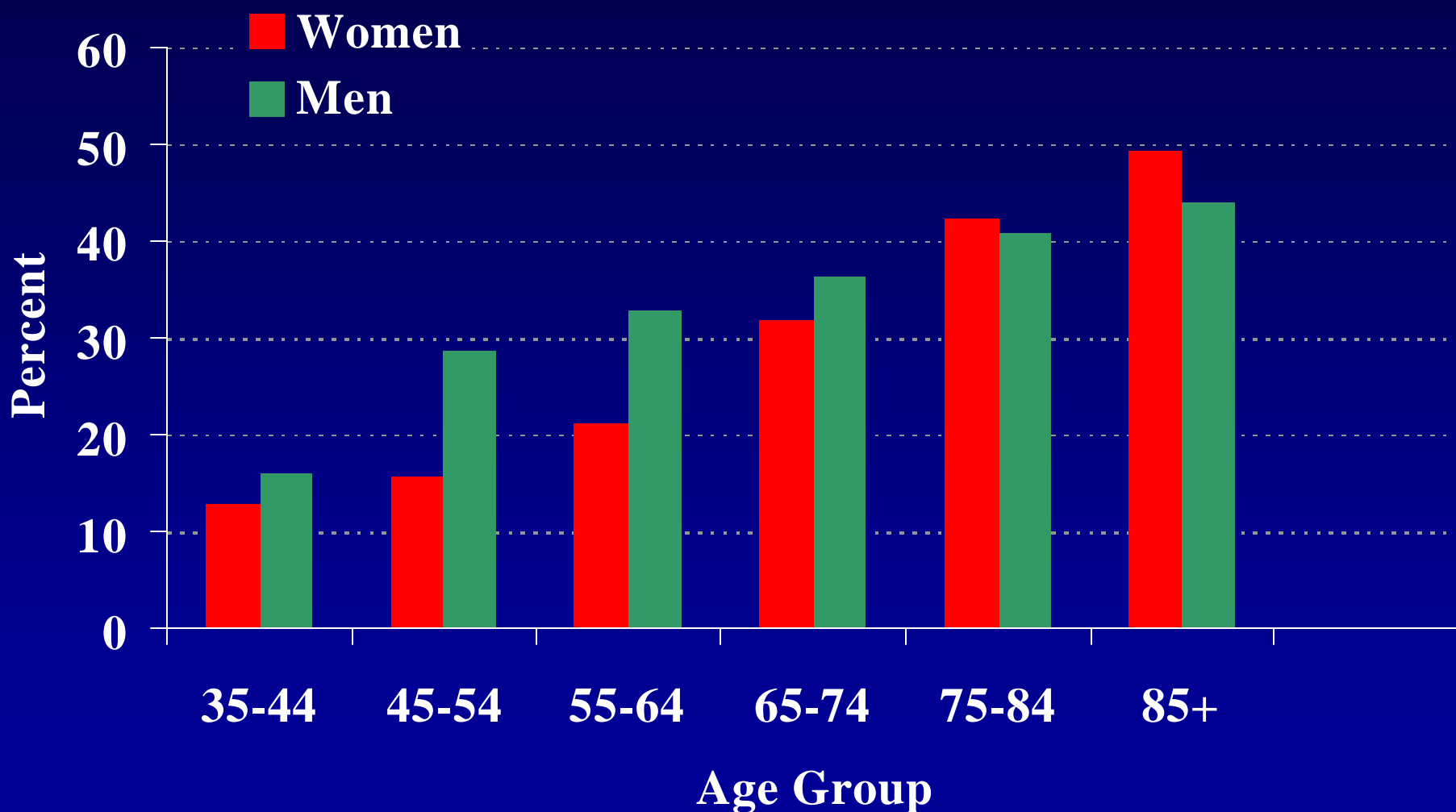


Total Number of Deaths: 215,669

Cardiovascular (ICD-9 390-459); Respiratory (ICD-9 460-519); Diabetes (ICD-9 250); Cancer (ICD-9 140-239); Infectious Diseases (ICD-9 001-139); Accidents/Poisonings/Violence (ICD-9 E800-E999)

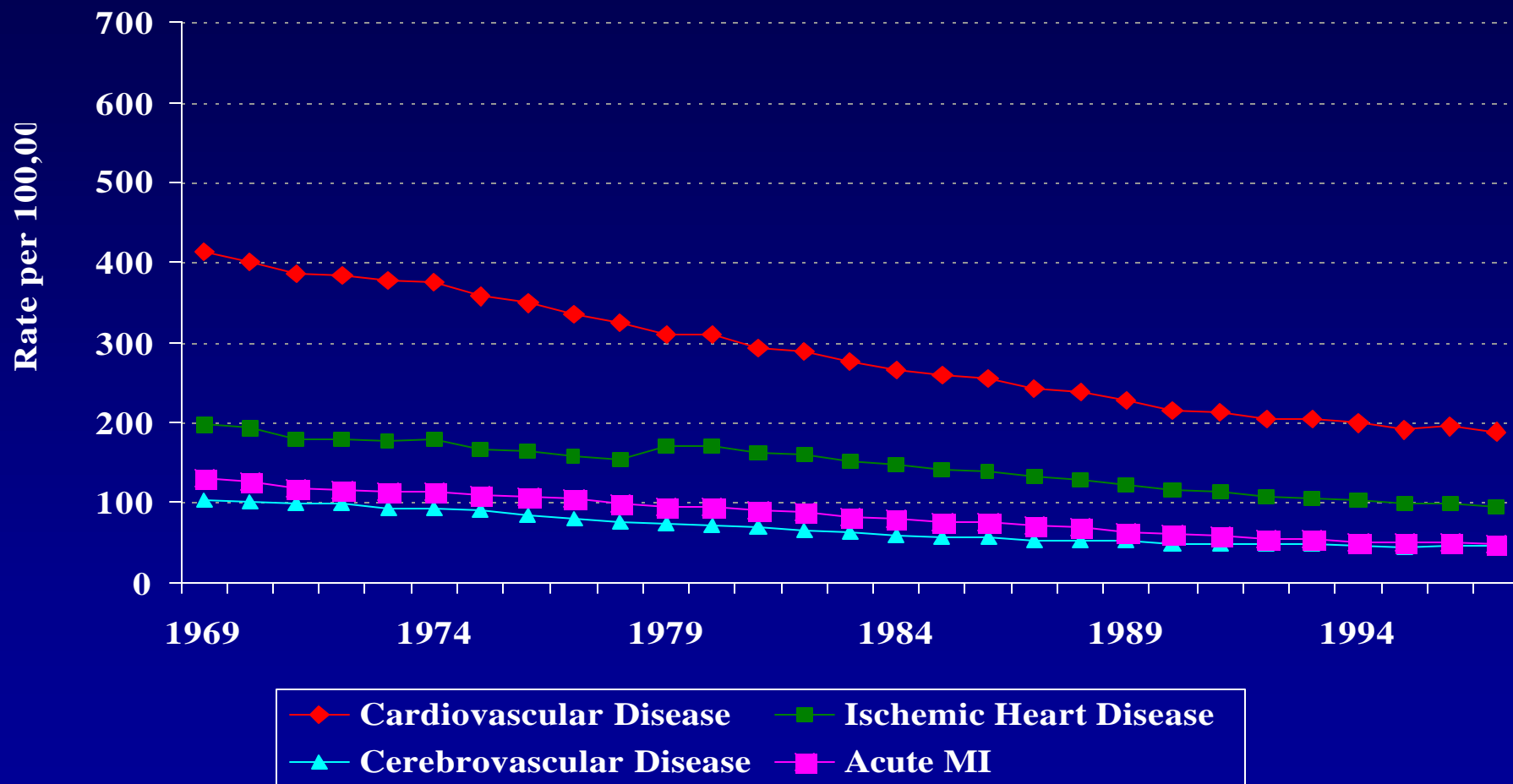
Source: Statistics Canada, 1997

Figure 3-5 Percentage of total deaths due to cardiovascular diseases by age group and sex, Canada, 1997.



Source: Statistics Canada, 1999

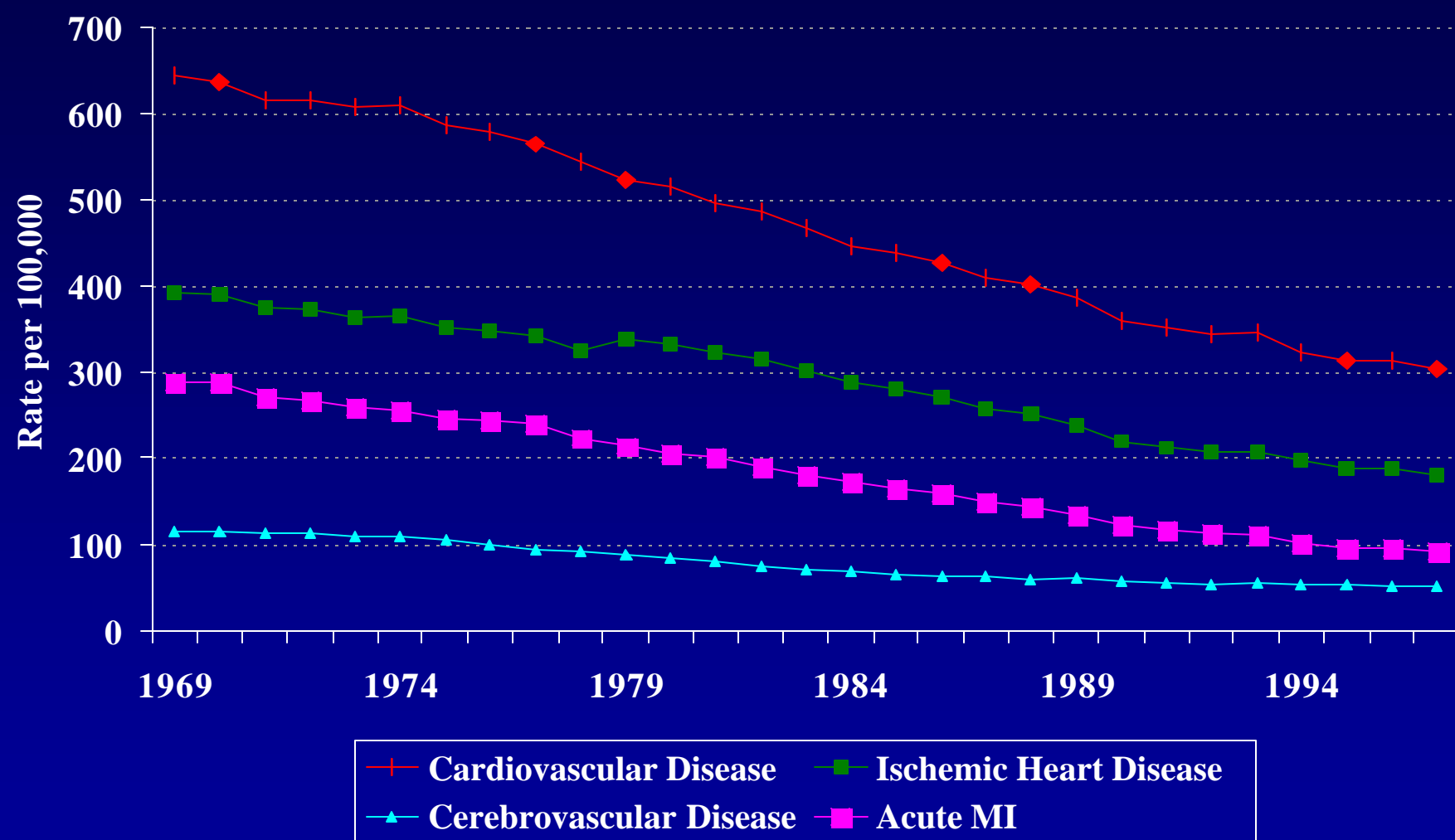
Figure 3-6 Age-standardized mortality rate per 100,000 women, Canada, 1969-1997.



Age-standardized to 1991 Canadian Population

Source: Laboratory Centre for Disease Control; Statistics Canada

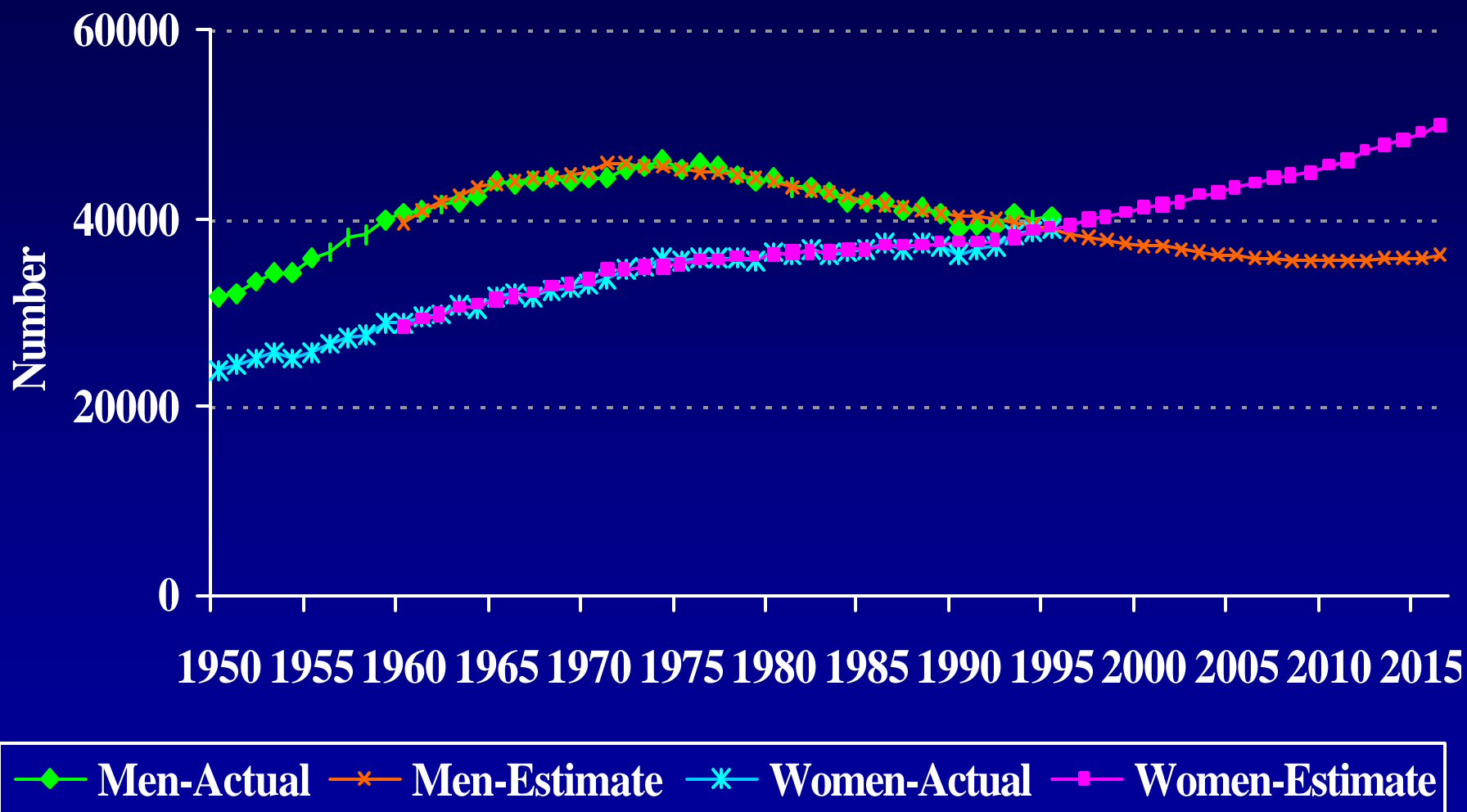
Figure 3-7 Age-standardized mortality rate per 100,000 men, Canada, 1969-1997.



Age-standardized to 1991 Canadian population

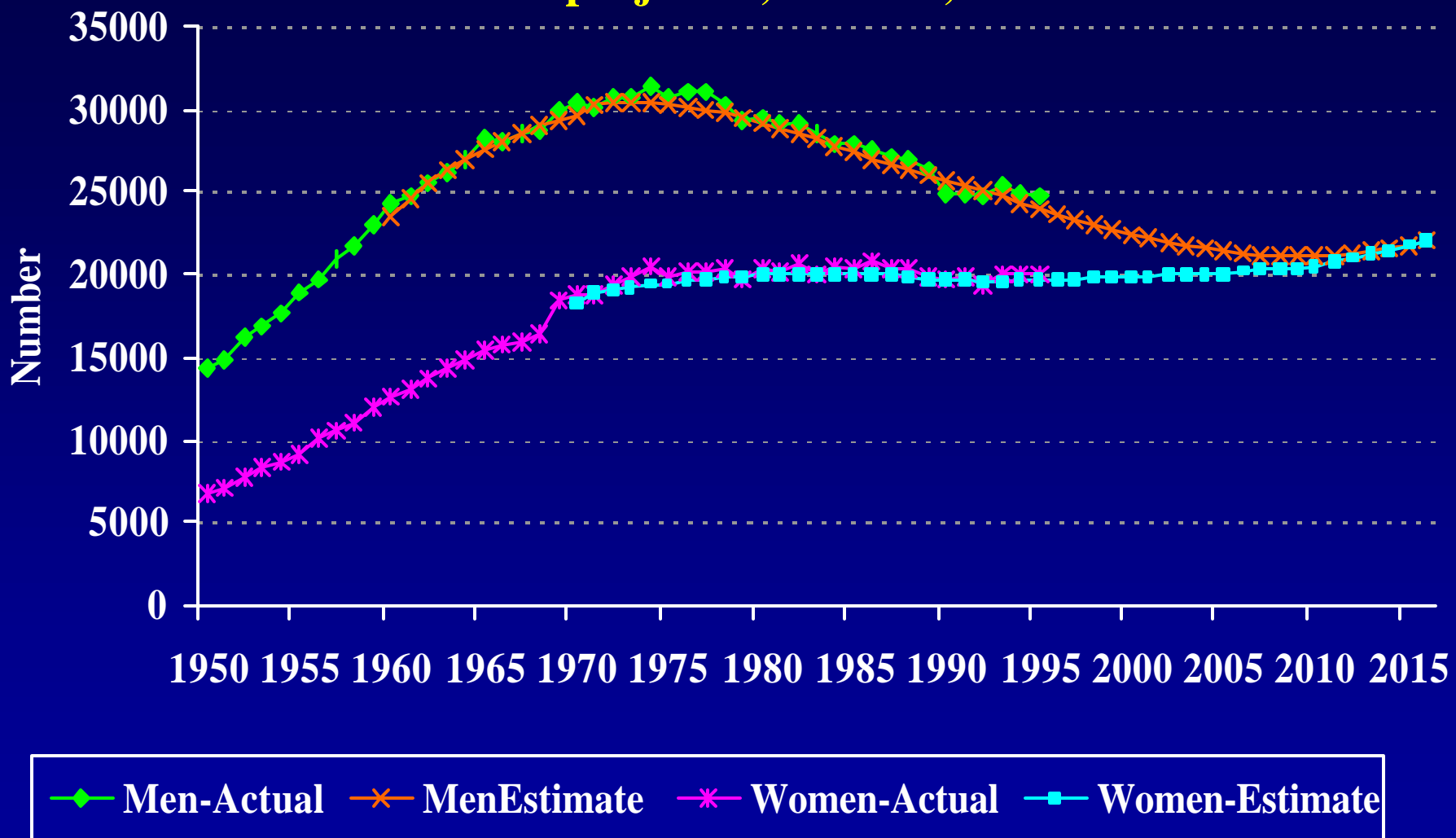
Source: Laboratory Centre for Disease Control; Statistics Canada

Figure 3-8 Number of cardiovascular disease deaths by sex, actual and projected, Canada, 1950-2016.



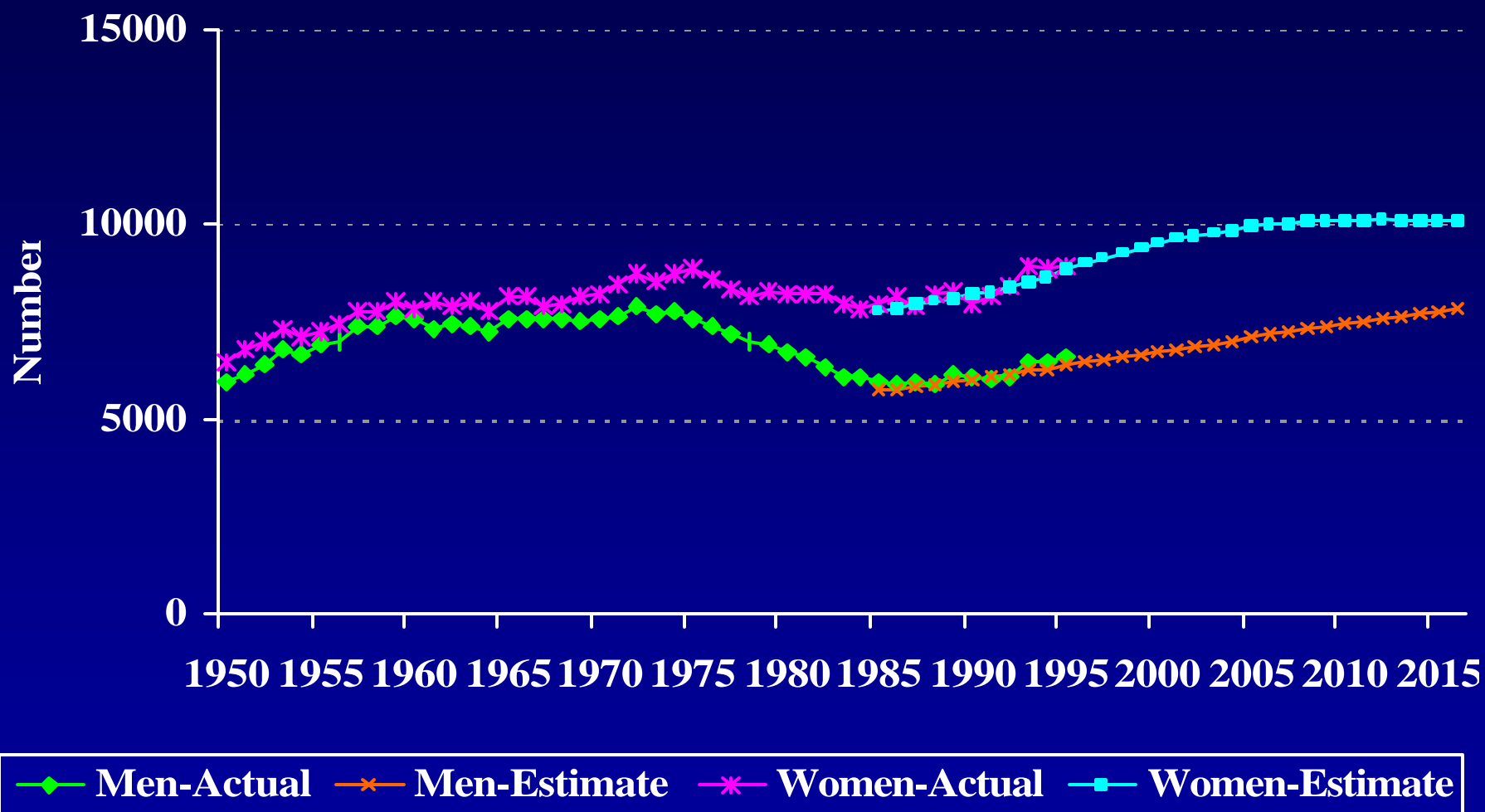
Source: LCDC, Health Canada, unpublished work

Figure 3-9 Number of ischemic heart disease deaths by sex, actual and projected, Canada, 1950-2016.



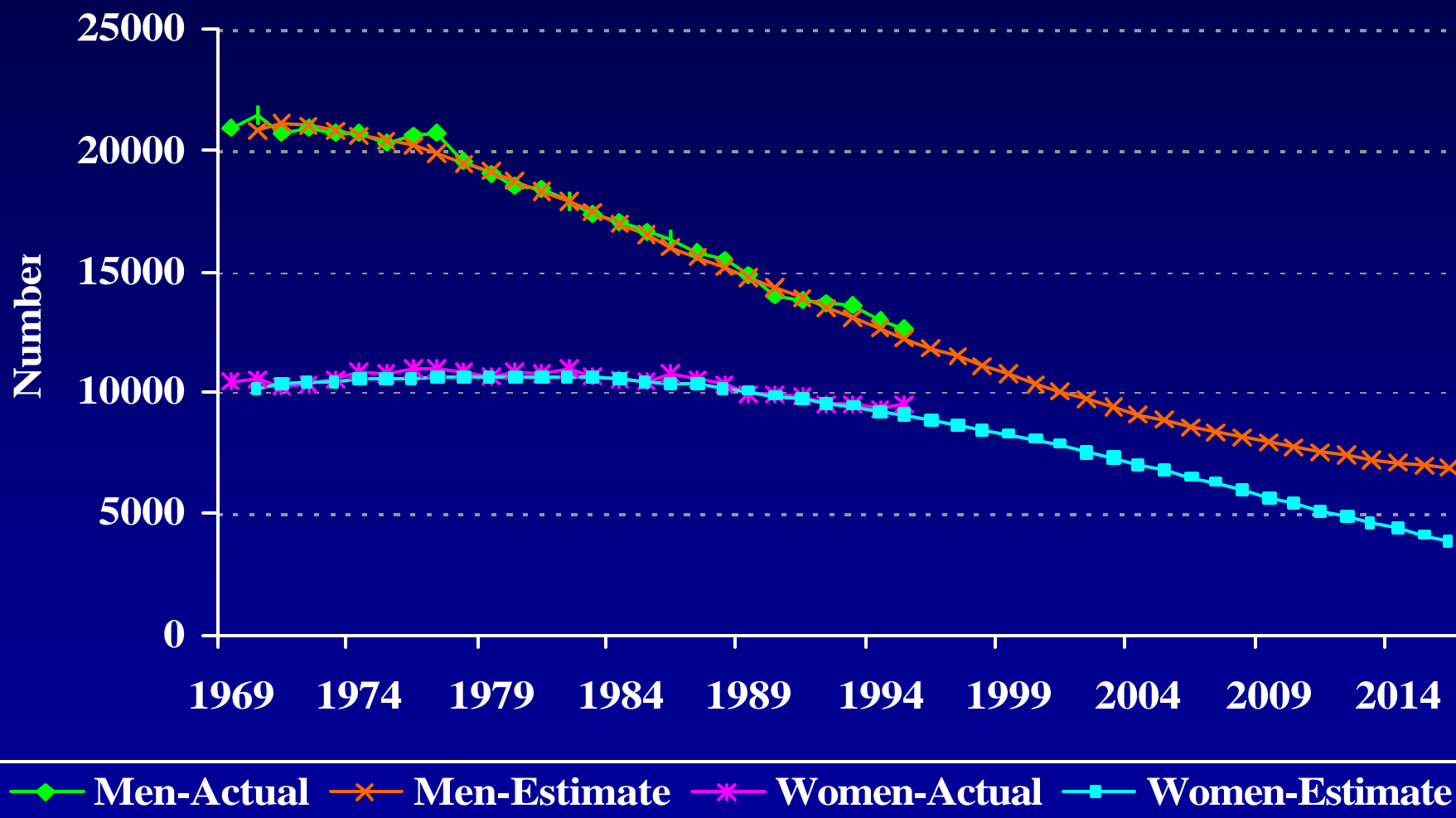
Source: LCDC, Health Canada, unpublished work

Figure 3-10 Number of cerebrovascular disease deaths by sex, actual and projected, Canada, 1950-2016.



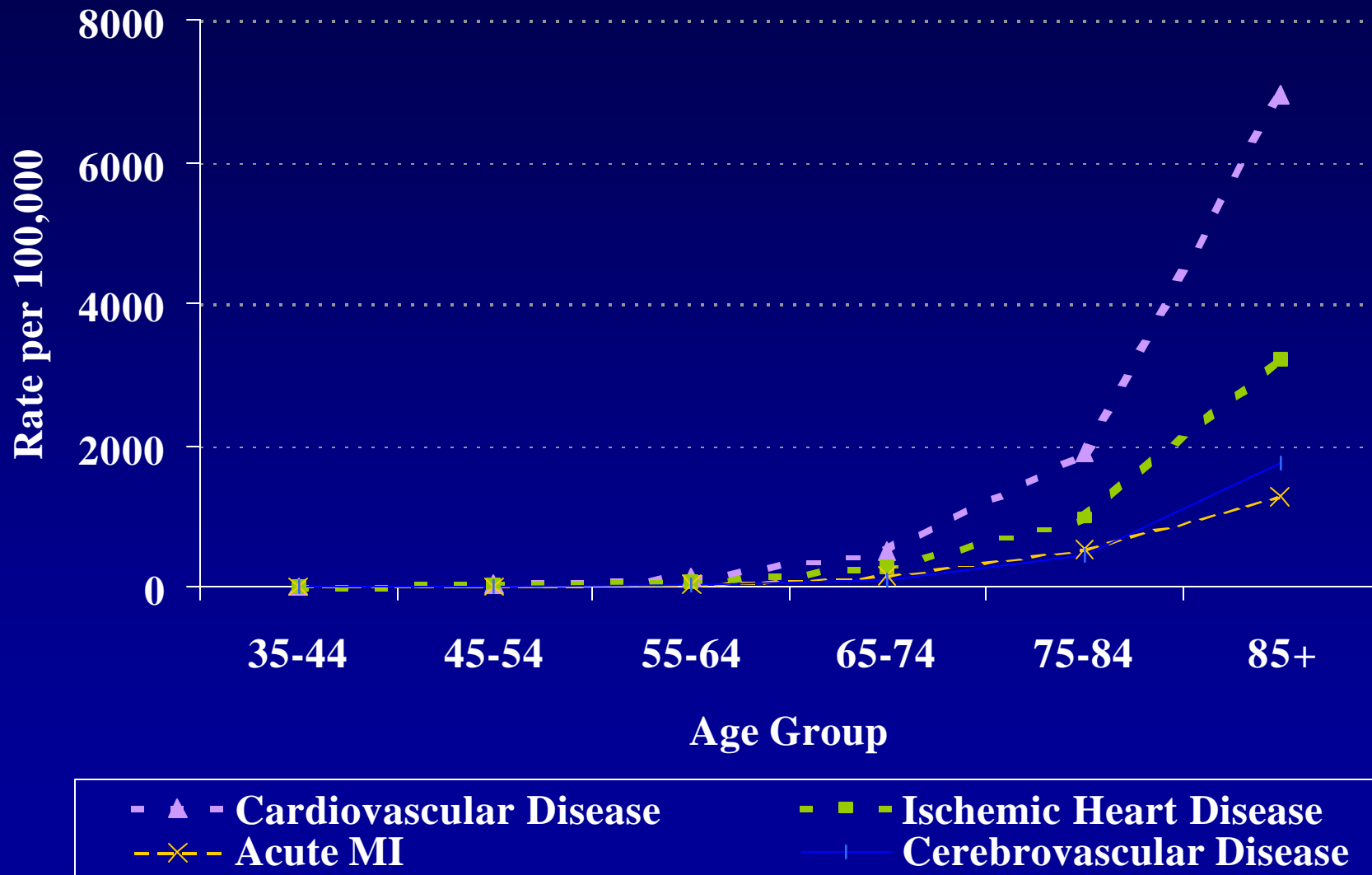
Source: LCDC, Health Canada, unpublished work

Figure 3-11 Number of acute myocardial infarction deaths by sex, actual and projected, Canada, 1969-2016.



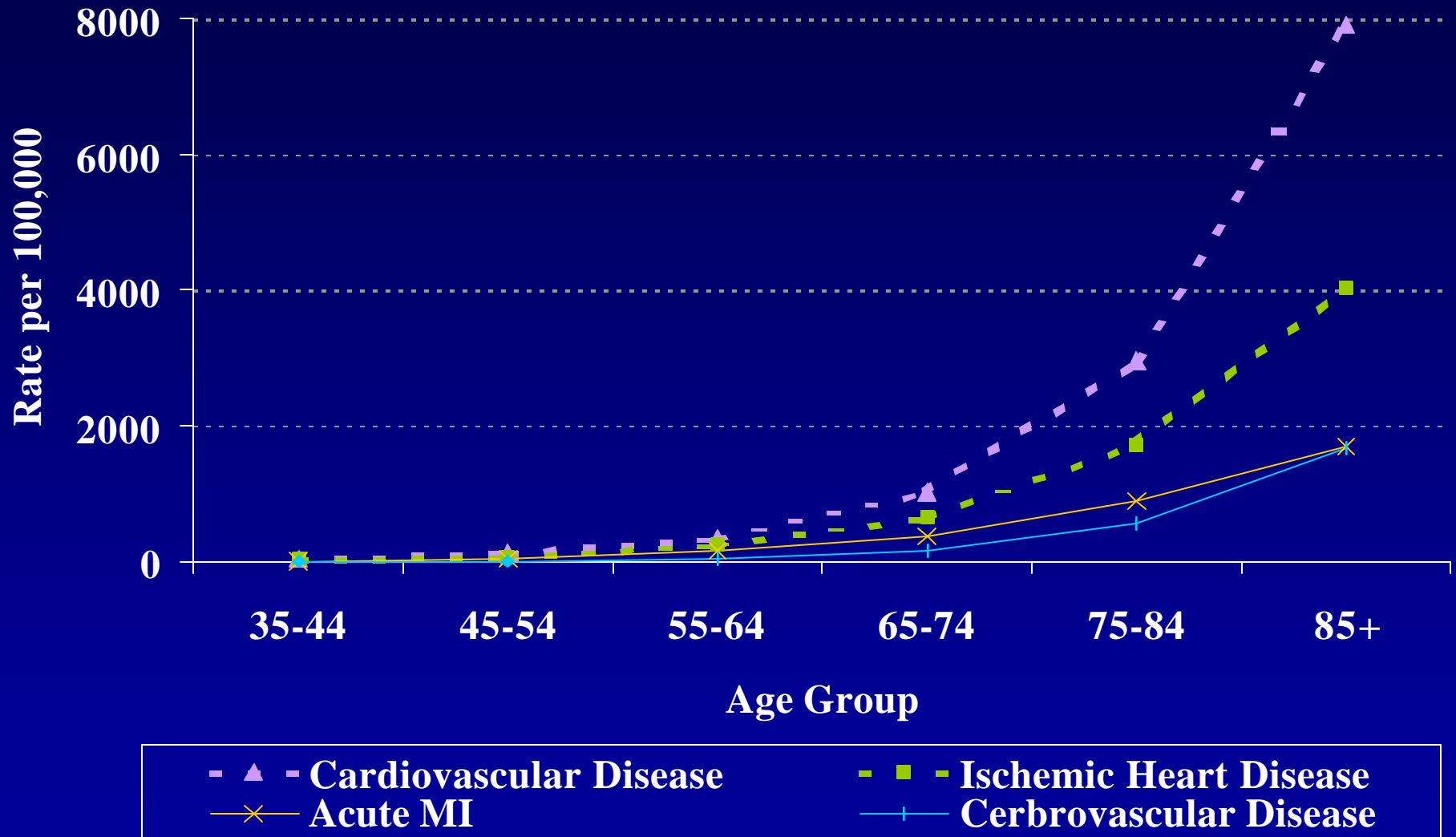
Source: LCDC, Health Canada, unpublished work

Figure 3-12 Age-specific cardiovascular disease mortality rates, women, Canada, 1997.



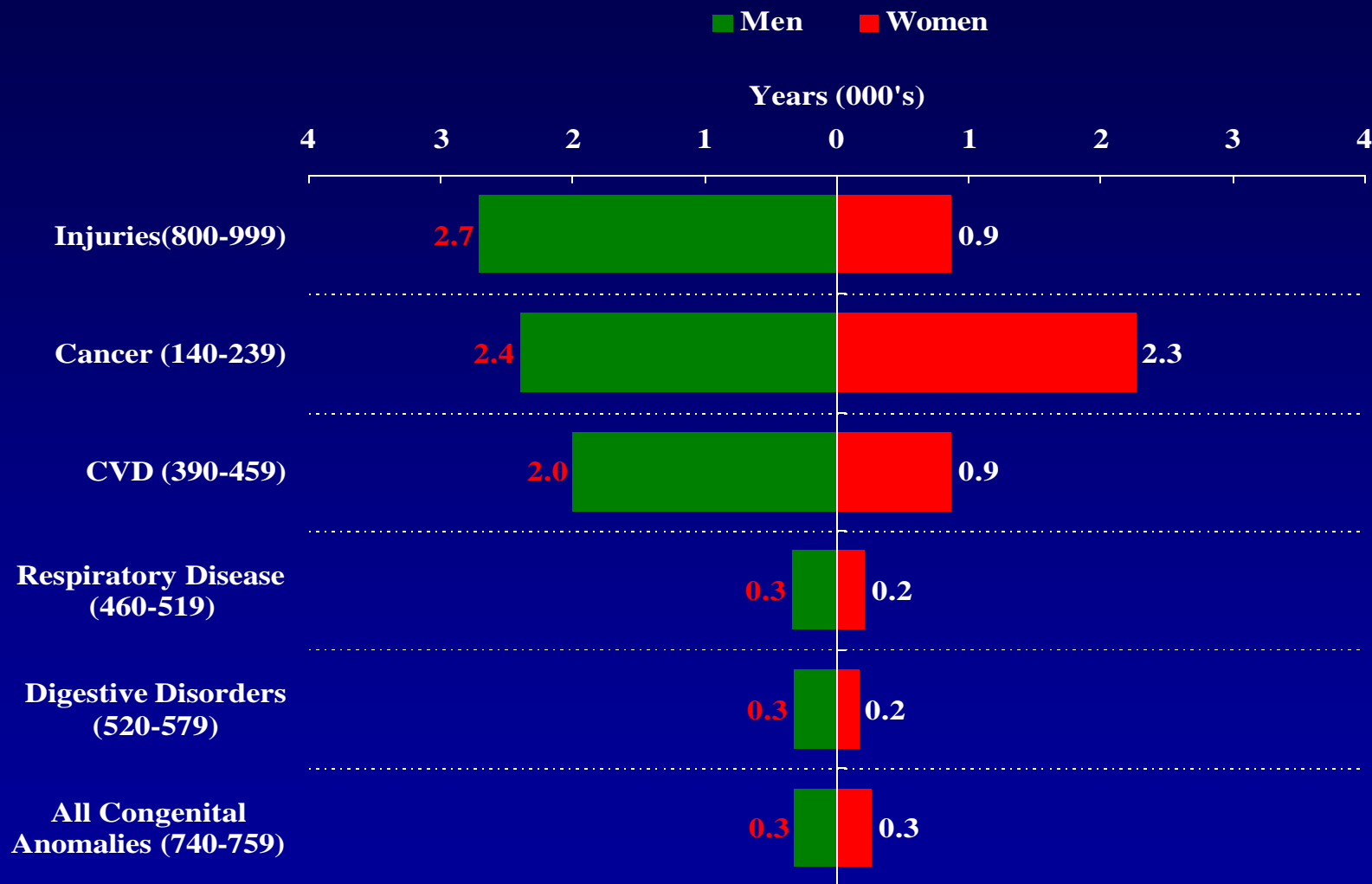
Source: Statistics Canada, 1999

Figure 3-13 Age-specific cardiovascular disease mortality rates, men, Canada, 1997.



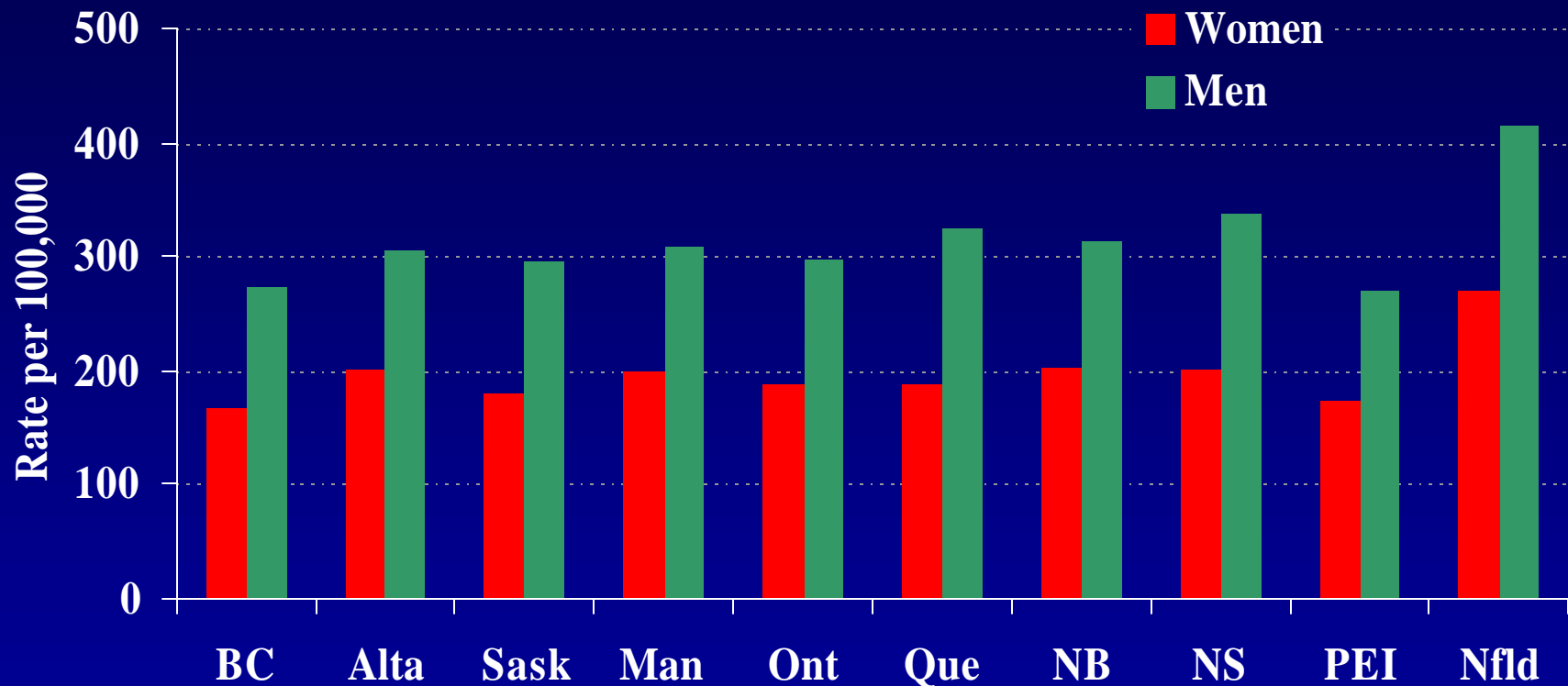
Source: Statistics Canada, 1999

Figure 3-14 Number of potential years of life lost (PYLL) prior to age 75 by disease category, 1997.



Source: Laboratory Centre for Disease Control, 1999

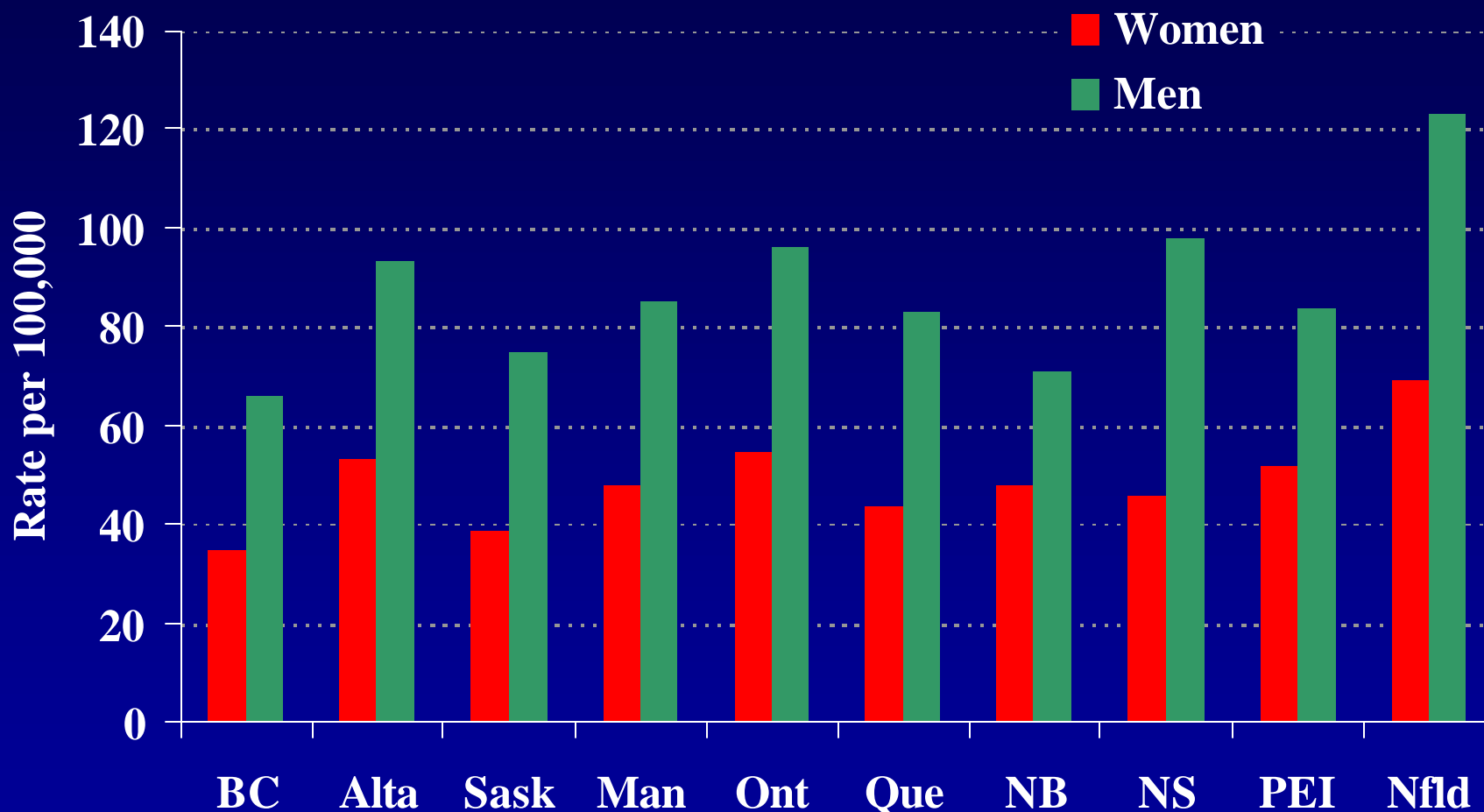
Figure 3-15 Age-standardized cardiovascular disease mortality rates per 100,000 by sex and province, Canada, 1997.



Age-standardized to 1991 Canadian population

Source: Statistics Canada, LCDC

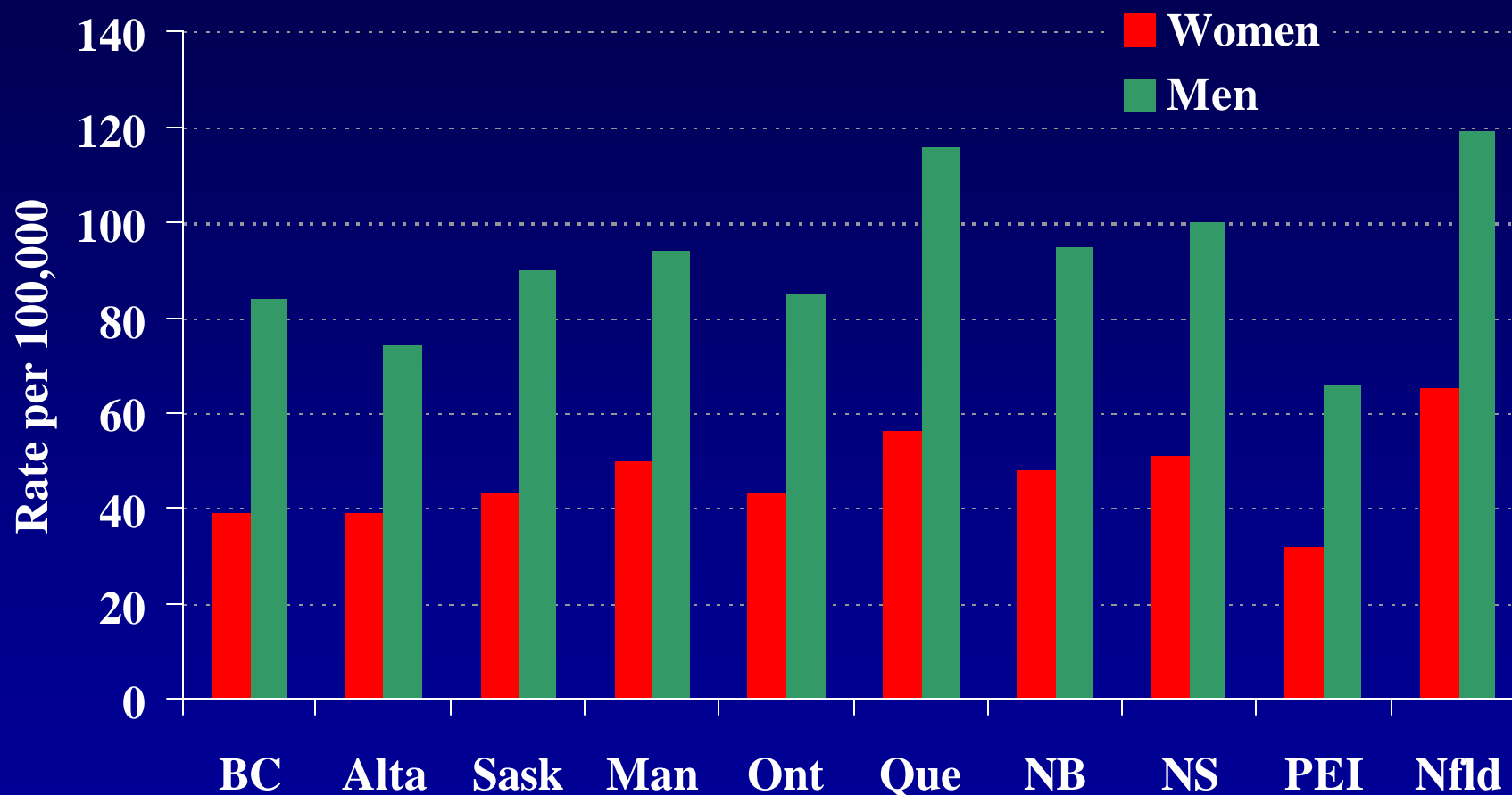
Figure 3-16 Age-standardized ischemic heart disease mortality rates per 100,000 by sex and province, Canada, 1997.



Age-standardized to 1991 Canadian population

Source: Statistics Canada, LCDC

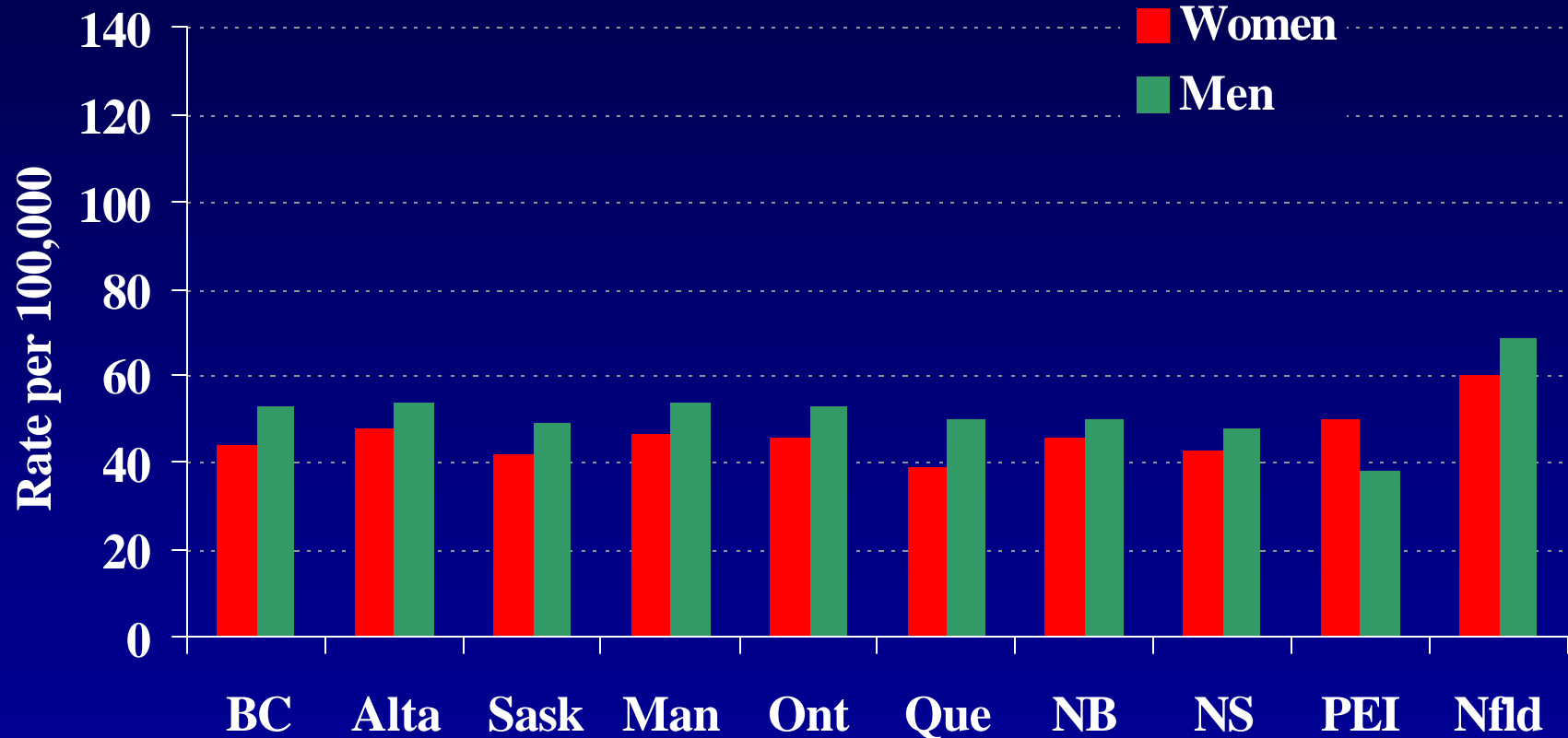
Figure 3-17 Age-standardized acute myocardial infarction mortality rates per 100,000 by sex and province, Canada, 1997.



Age-standardized to 1991 Canadian population

Source: Statistics Canada, LCDC

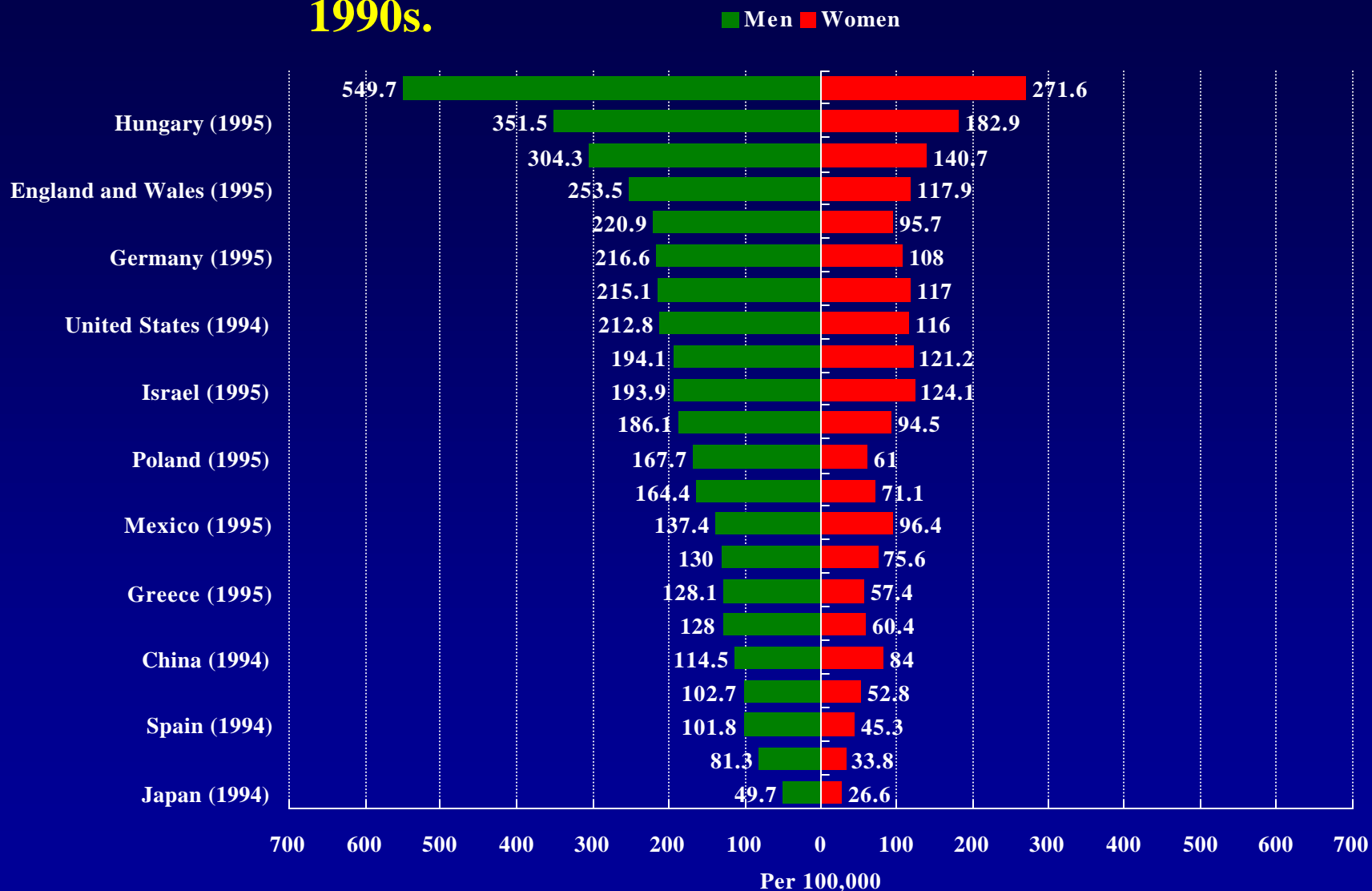
Figure 3-18 Age-standardized cerebrovascular disease mortality rates by sex and province, Canada, 1997.



Age-standardized to 1991 Canadian population

Source: Statistics Canada, LCDC

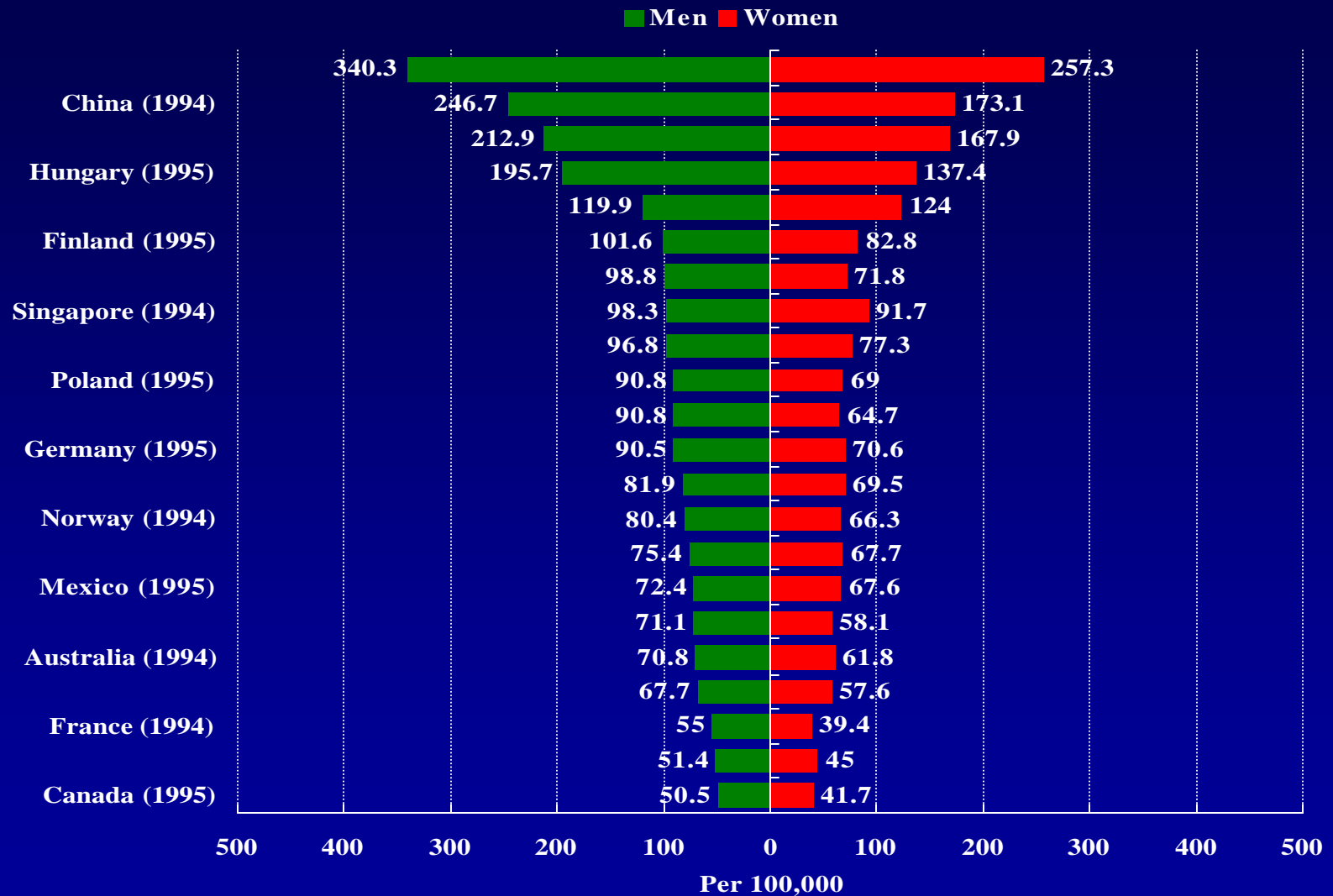
Figure 3-20 Age-standardized mortality rates, IHD, World, mid-1990s.



Age-standardized mortality rate

Source: 1996 World Health Statistics Annual, WHO

Figure 3-21 Age-standardized mortality rates, cerebrovascular disease, World, mid-1990s.



Age-standardized mortality rate

Source: 1996 World Health Statistics Annual, WHO