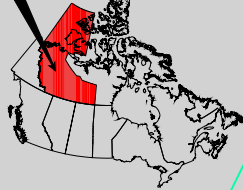


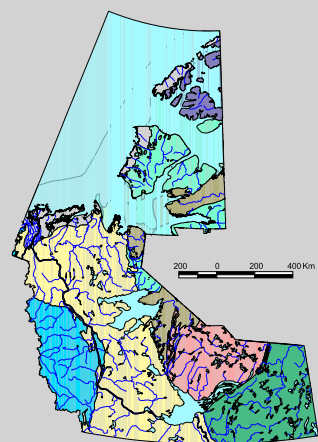
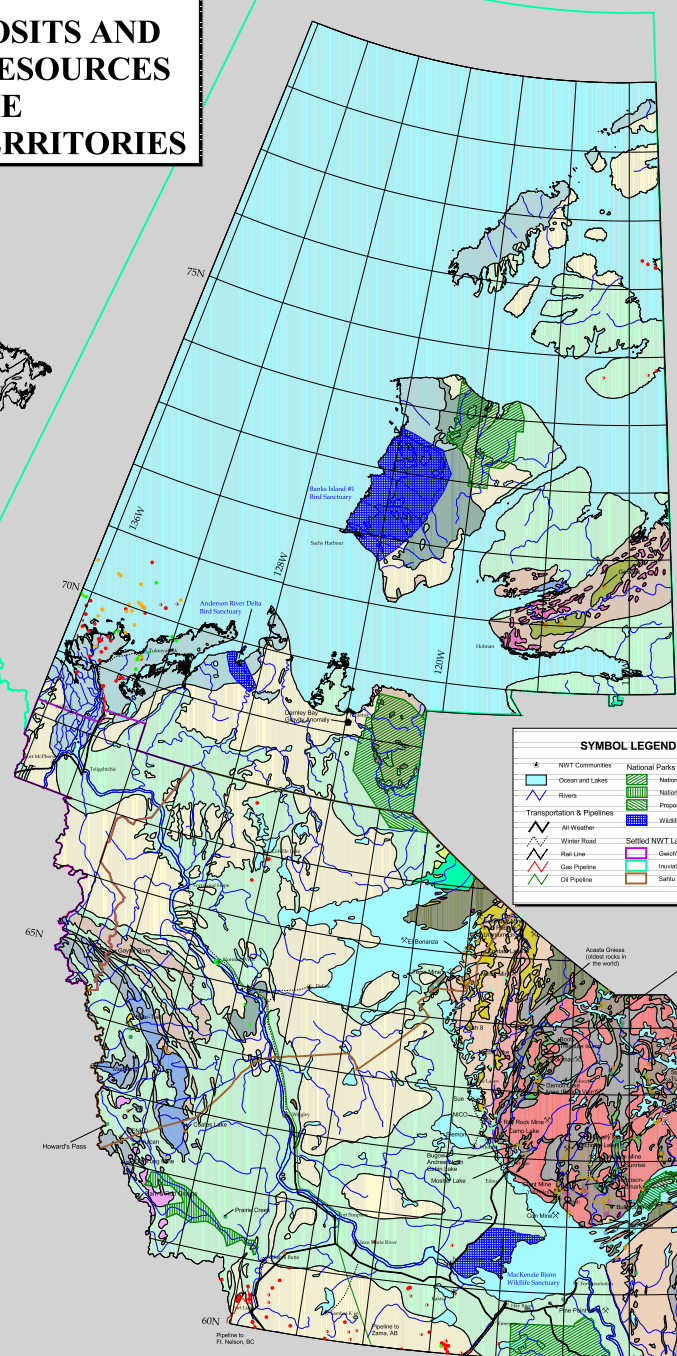
# MINERAL DEPOSITS AND PETROLEUM RESOURCES OF THE NORTHWEST TERRITORIES

Map Area (NWT)

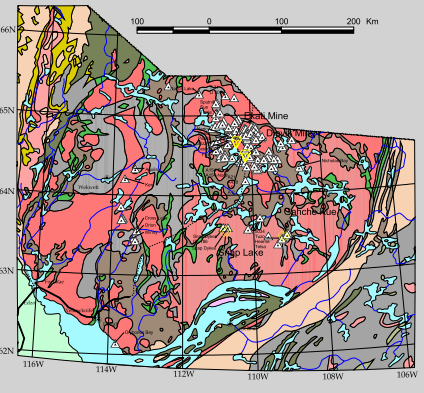


LEGEND OF GEOLOGICAL SYMBOLS	
Mineral Showings	Midobrium
Silver	Nickel
Gold	Mica
Beryllium	Lead
Antimony	Asbestos
Barite	Tin
Bismuth	Tantalum
Building Stone	Tronolite
Craving Stone	Uranium
Coal	Tungsten
Corundum	Zinc
Copper	Oil and Gas Wells
Diamond	GAS
Evite Stone	GAS SHOW
Iron	Oil & GAS
Fluorite	Oil & GAS SHOW
Uranium	Oil
Manganese	Oil SHOW

Simplified Geology	
Archean intrusive rocks	Archean metamorphic rocks
Archean sedimentary rocks	Archean volcanic rocks
Archean-Paleoproterozoic intrusive rocks	Archean-Paleoproterozoic metamorphic rocks
Archean-Paleoproterozoic sedimentary and volcanic rocks	Archean-Paleoproterozoic sedimentary rocks
Paleoproterozoic intrusive rocks	Paleoproterozoic metamorphic rocks
Paleoproterozoic sedimentary rocks	Paleoproterozoic volcanic rocks
Mesoproterozoic intrusive rocks	Mesoproterozoic metamorphic rocks
Mesoproterozoic sedimentary rocks	Mesoproterozoic volcanic rocks
Mesoproterozoic-Paleoproterozoic sedimentary rocks	Mesoproterozoic-Paleoproterozoic metamorphic rocks
Mesoproterozoic-Paleoproterozoic sedimentary rocks	Mesoproterozoic-Paleoproterozoic volcanic rocks
Mesozoic intrusive rocks	Mesozoic metamorphic rocks
Mesozoic sedimentary rocks	Mesozoic volcanic rocks
Mesozoic-Cenozoic sedimentary rocks	Cenozoic sedimentary rocks



SELECTED KIMBERLITES IN THE SLAVE PROVINCE	
Selected Kimberlites	Simplified Geology
Advanced Projects	Archean intrusive rocks
Diamond Mines	Archean metamorphic rocks
	Archean sedimentary rocks
	Archean volcanic rocks
	Archean-Paleoproterozoic intrusive rocks
	Archean-Paleoproterozoic metamorphic rocks
	Archean-Paleoproterozoic sedimentary and volcanic rocks
	Paleoproterozoic intrusive rocks
	Paleoproterozoic sedimentary rocks
	Paleoproterozoic volcanic rocks
	Mesoproterozoic intrusive rocks
	Paleozoic sedimentary rocks



GEOLOGICAL PROVINCES OF THE NWT	
Ocean and Lakes	Rivers
NWT Structural Provinces	
Arctic Continental Shelf	
Arctic Platform	
Beary Province	
Chukchi Province	
Canadian Orogen	
Insular Orogen	
Wabigoon Platform	
Slave Province	

SYMBOL LEGEND	
NWT Communities	National Parks
Ocean and Lakes	National Park Reserve
Rivers	Proposed National Park
Transportation & Pipelines	Wildlife Sanctuaries
All Weather	Settled NWT Land Claims
Winter Road	Charley
Rail Line	Truvost Settlement Area
Gas Pipeline	Sikku
Oil Pipeline	

**MINERAL DEPOSITS AND PETROLEUM RESOURCES OF THE NORTHWEST TERRITORIES**

Minerals, Oil and Gas Division  
Department of Resources, Wildlife and Economic Development  
Government of the Northwest Territories  
Yellowknife, NT X1A 2J9  
NWT Mining and Metallurgical  
Projection Parameters:  
Projection: Latest Conformal Conic  
Units: Metric  
Datum: NAD83  
Spheroid: GRS80  
Semi-Major Axis: 6378137.000 (Central Meridian), 61.91 km  
False Easting: 0.00  
False Northing: 0.00

While every effort has been made to ensure the completeness and accuracy of this compilation, there may be errors and omissions for which the authors assume no responsibility. Suggested changes or corrections are appreciated.

Compiled by J. Robinson and D. Swain, January 2000.  
Drafting by J. Robinson  
Updated (October 2002)

This compilation is intended for display purposes. It is designed to illustrate the major deposits of the NWT, and their association with various rock types or geologic units. No other geological units or deposits are shown.

The stippled deposits and geological units are intended to illustrate the variety and potential of the mineral resources of the NWT. Mineral occurrences of Canada importance from prospect to mine are stippled. Location of roads, parks, settlements, geological units, mineral deposits and petroleum resources are appropriate.

Data for this compilation were derived or modified from the following sources:  
Wheeler, J.D., Hoffman, P.F., Goff, G.D., Davidson, A., Sanford, S.V., Chouin, A.V., and Reed, W.R. (2001). 1:500,000 Geological Map of Canada, Geological Survey of Canada, Map D19802A.

Minerals, Oil and Gas Division  
Department of Resources, Wildlife and Economic Development  
Government of the Northwest Territories  
1001 Mineral Deposits and Petroleum Resources of the Northwest Territories

Armitage, J.P.  
1988. NWT Kimberlite Occurrence Database  
ESG 1988-13  
Armitage, J.P.  
2002. pers. comm.  
Jones, G.  
2002. pers. comm. Mineral Information Maps

NORTHWEST Database of Mineral Showings for the Northwest Territories & Nunavut  
Index and Northern Affairs Canada  
NWT Geology Division  
NWT Geology Division  
Selected oil and gas and information provided by the National Energy Board (NEB)  
444 St. James Street West  
Calgary, Alberta, T2P 2S8  
Phone: (403) 292-6800  
Fax: (403) 292-6808

Landfall mapping courtesy of  
The Northwest Territories Centre for Remote Sensing  
Department of Resources, Wildlife and Economic Development  
P.O. Box 1225  
Yellowknife, NT X1A 2L8  
http://www.gov.nt.ca/REDS/index.html

