



Transport
Canada

Transports
Canada

Canadian Motor Vehicle Traffic Collision Statistics

TP 3322

Collected in cooperation with
the Canadian Council of
Motor Transport
Administrators

2002

Canada

Collisions and Casualties • 1983-2002

	Collisions		Victims	
	Fatal ¹	Personal Injury ²	Fatalities ³	Injuries ⁴
1983	3,623	157,000	4,216	224,297
1984	3,580	165,221	4,120	237,455
1985	3,774	179,704	4,364	259,189
1986	3,510	184,053	4,068	264,481
1987	3,729	193,237	4,286	280,575
1988	3,610	190,094	4,154	278,618
1989	3,651	192,595	4,246	284,937
1990	3,445	178,515	3,963	262,680
1991	3,228	170,693	3,690	249,217
1992	3,073	169,640	3,501	249,821
1993	3,121	168,106	3,615	247,588
1994	2,869	166,780	3,263	245,110
1995	2,854	164,190	3,351	241,935
1996	2,708	156,282	3,091	230,890
1997	2,647	150,118	3,064	221,349
1998	2,612	148,414	2,949	217,803
1999	2,636	151,110	2,985	222,551
2000	2,569 ^r	156,000 ^r	2,927 ^r	227,458 ^r
2001*	2,434 ^r	151,834 ^r	2,781 ^r	221,121 ^r
2002*	2,596	156,902	2,936	227,768

¹ "Fatal collisions" include all reportable motor vehicle crashes which resulted in at least one fatality, where death occurred within 30 days of collision, except in Quebec (8 days).

² "Personal injury collisions" include all reportable motor vehicle crashes which resulted in at least one injury but not death within the timeframes set out in "fatal collisions".

³ "Fatalities" include all those who died as a result of involvement in a reportable traffic collision within 30 days of its occurrence, except in Quebec (8 days).

⁴ "Injuries" include all those who suffered any visible injury or complained of pain.

* Data for Nunavut are not reported for 2001 and 2002 except for fatalities. Data for Ontario are preliminary for 2002.

^r Revised.

Fatalities and Injuries by Age Group

Age Group	Fatalities	Injuries
0 - 4	29	2,855
5 - 14	126	13,011
15 - 19	331	29,236
20 - 24	365	30,073
25 - 34	402	41,248
35 - 44	448	40,166
45 - 54	403	29,845
55 - 64	286	16,616
65 +	518	16,664
Not stated	28	8,054
Total	2,936	227,768



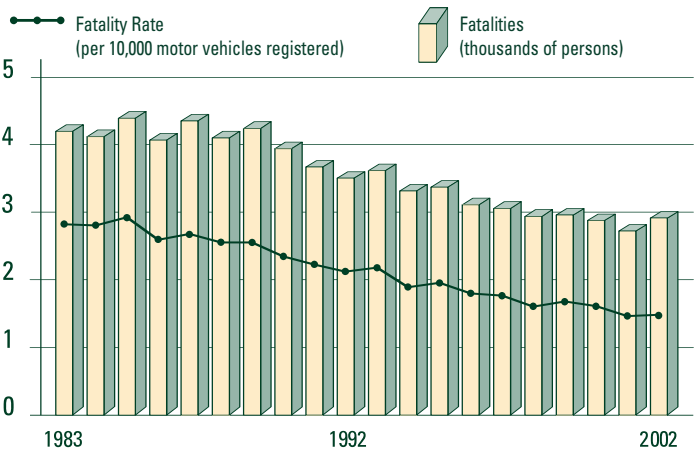
Fatalities by Road User Class

Road User Class		1998	1999	2000	2001	2002
Drivers	#	1,457	1,531	1,467	1,443 ^r	1,546
	%	49.4	51.3	50.1	51.9	52.6
Passengers	#	718	720	749	654 ^r	730
	%	24.3	24.1	25.6	23.5	24.9
Pedestrians	#	406	419	372	335	370
	%	13.8	14.0	12.7	12.0	12.6
Bicyclists	#	77	68	40	60	64
	%	2.6	2.3	1.4	2.2	2.2
Motorcyclists*	#	171 ^r	166 ^r	177 ^r	163 ^r	172
	%	5.8	5.6	6.0	5.9	5.9
Not stated / Other	#	120 ^r	81 ^r	122 ^r	126 ^r	54
	%	4.1	2.7	4.2	4.5	1.8
Total	#	2,949	2,985	2,927^r	2,781^r	2,936
	%	100.0	100.0	100.0	100.0	100.0

* Includes moped riders ^r Revised



Fatalities • 1983-2002





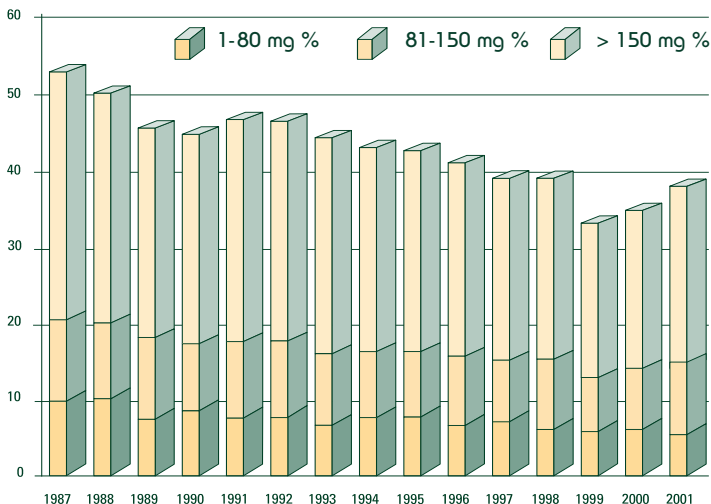
Casualty Rates • 2002

	PER 100,000 POPULATION		PER BILLION VEHICLE-KILOMETRES*		PER 100,000 LICENSED DRIVERS	
	Fatalities	Injuries	Fatalities	Injuries	Fatalities	Injuries
Canada	9.3	725.1	9.3	721.2	13.9	1,076.3
N.L.	7.1	502.3	10.0	701.2	11.2	787.7
P.E.I.	13.6	749.0	14.3	789.8	18.9	1,041.7
N.S.	9.3	629.7	8.5	574.0	13.5	912.4
N.B.	13.7	666.0	12.2	592.3	20.0	966.8
Que.	9.4	716.1	9.9	749.1	15.3	1,160.3
Ont.	7.3	696.3	7.1	679.4	10.5	998.8
Man.	9.5	828.3	10.8	948.9	16.0	1,395.8
Sask.	13.5	719.2	12.3	652.7	20.6	1,092.0
Alta.	11.9	931.0	10.1	783.6	15.9	1,241.6
B.C.	11.3	708.6	12.4	776.6	16.7	1,047.5
Y.T.	40.1	909.0	25.3	572.6	54.0	1,224.8
N.W.T.	7.2	555.5	8.4	643.2	10.8	828.9
Nvt.	10.4	n.a.	n.a.	n.a.	n.a.	n.a.

* Statistics Canada, "Canadian Vehicle Survey", Catalogue No. 53-223-XIE.

Note: Data for Ontario are preliminary for 2002. At this time, there is no official abbreviation for Nunavut. The abbreviation used here is provisional.

Percentage of Fatally Injured Drivers Tested and Found to Have Been Drinking (BAC > 0 mg %*)



*BAC: Blood Alcohol Concentration.

mg %: Weight of alcohol in the bloodstream stated as milligrams in 100 millilitres of blood.

Note: 2002 data were not available at the time of publication.

Source: Traffic Injury Research Foundation.

Percentage of Driver and Passenger Fatalities and Serious Injuries Where Victims Were Not Using Seat Belts

	2000	2001	2002
Drivers			
Fatalities	36.8	38.7	36.4
Serious Injuries	15.5	16.0	13.2
Passengers			
Fatalities	35.2	41.1	33.9
Serious Injuries	21.4	23.1	19.1

"Serious Injuries" include victims admitted to hospital for treatment or observation.

Note: The percentage of serious injuries where victims were not using seat belts does not reflect data for British Columbia.



Number of Collisions by Location

Location	Fatal	Personal Injury
Urban ¹	937	112,693
Rural ²	1,642	41,970
Not stated	17	2,239
Total	2,596	156,902

¹ Urban includes: a) metropolitan roads and streets and other urban areas, or b) a speed limit at the collision site of 60 km/h or less.

² Rural includes: a) primary or secondary highways, as well as local roads, or b) a speed limit at the collision site exceeding 60 km/h.

Percentage of Fatalities and Serious Injuries by Road User Class

Road User Class	Fatalities	Serious Injuries
Drivers	52.6	51.1
Passengers	24.9	28.4
Pedestrians	12.6	9.5
Bicyclists	2.2	3.1
Motorcyclists	5.9	5.6
Not stated/Other	1.8	2.3
Total	100.0	100.0

Note: The percentage of serious injuries by road user class does not reflect data for British Columbia and Newfoundland and Labrador.



Percentage of Driver and Passenger Fatalities and Serious Injuries by Age Group

Age Group	Fatalities		Serious Injuries	
	Drivers	Passengers	Drivers	Passengers
0 - 4	0.0	2.7	0.0	4.2
5 - 14	0.2	10.2	0.3	10.7
15 - 19	8.9	17.0	10.8	20.2
20 - 24	14.0	13.8	14.1	13.7
25 - 34	15.8	10.5	20.6	13.6
35 - 44	18.0	9.9	20.3	9.9
45 - 54	17.8	8.0	15.3	8.8
55 - 64	10.3	7.9	9.0	5.2
65 +	14.9	18.5	9.3	9.3
Not Stated	0.1	1.5	0.3	4.4
Total	100.0	100.0	100.0	100.0

Note: The percentage of drivers and passengers seriously injured by age group does not reflect data for British Columbia.



Number of Licensed Drivers by Gender and by Age

Age Group	Males	Females	Total
< 16	26,033	18,247	44,280
16 - 19	562,622	489,912	1,052,534
20 - 24	906,923	828,127	1,735,050
25 - 34	1,982,986	1,860,962	3,843,948
35 - 44	2,490,066	2,327,717	4,817,783
45 - 54	2,216,382	2,039,930	4,256,312
55 - 64	1,489,466	1,288,209	2,777,675
65 +	1,486,798	1,148,286	2,635,084
Total	11,161,276	10,001,390	21,162,666

Licensed Drivers and Motor Vehicle Registrations by Type of Vehicle • 1983-2002 (in thousands)

	Licensed Drivers ¹	Passenger Automobiles	Commercial Vehicles ²	Motorcycles ³
1983	15,298	10,732	3,380	510
1984	15,540	10,781	3,119	507
1985	15,964	11,118	3,213	487
1986	16,226	11,586	3,285	465
1987	16,927	11,686	3,659	448
1988	17,155	12,086	3,850	400
1989	17,592	12,380	3,962	378
1990	17,718	12,622	4,000	359
1991	18,090	12,578	3,516	350
1992	18,465	12,781	3,461	339
1993	18,843	12,925	3,455	337
1994	19,243	13,131	3,510	330
1995	19,327	13,192	3,535	320
1996	19,964	13,251	3,620	312
1997	20,148	13,515	3,684	319
1998	20,744 ^e	13,887	3,767	334
1999	20,934	16,538	722	274
2000	20,593	16,832	739	311
2001	20,879	17,055	729	318
2002	21,163	17,543	724	350

¹ Excludes temporary permits prior to 1999.

² Pre-1999, these registrations include trucks, buses and other commercial vehicles, such as vans. From 1999, these registrations include commercial vehicles (trucks and buses) greater than 4 500 kg.

³ Includes mopeds.

^e Estimated.



Source: 1983 to 1998: Statistics Canada, Catalogue No. 53-219, "Road Motor Vehicles - Registrations".

From 1999, the motor vehicle registrations are from Statistics Canada, "Canadian Vehicle Survey" Catalogue No. 53-223-XIE. From 1999 the licensed drivers were provided by each jurisdiction.

The decline in police reporting in British Columbia in years 1996 through 2002 has affected the British Columbia totals and, to a lesser extent, national totals reported in this publication.

To find out more about national road safety programs or initiatives, call Transport Canada toll free at 1 800 333-0371 or e-mail us at roadsafetywebmail@tc.gc.ca. You can also visit our web site at www.tc.gc.ca/roadsafety or the Canadian Council of Motor Transport Administrators' web site at www.ccmta.ca.