



# NOTICES TO MARINERS

## EASTERN EDITION

Published monthly by the



## CANADIAN COAST GUARD

### CONTENTS

	Page
Section 1 Safety and General Information .....	1 – 8
Section 2 Chart Corrections.....	9 – 20
Section 3 Radio Aids to Marine Navigation Corrections .....	NIL
Section 4 Sailing Directions and Small Craft Guide Corrections.....	21 – 27
Section 5 Light List Corrections .....	28 – 31

Marine Programs Directorate  
Aids to Navigation



Internet: <http://www.notmar.com>

## EXPLANATORY NOTES

**Geographical positions** refer directly to the graduations of the largest scale Canadian Hydrographic chart unless otherwise indicated.

**Bearings** refer to the true compass and are measured clockwise from 000° (North) clockwise to 359°; those relating to lights are from seaward.

**Visibility** of lights is that in clear weather.

**Depths** - The units used for soundings (metres, fathoms or feet) are stated in the title of each chart.

**Elevations** are normally given above Higher High Water, Large Tides unless otherwise indicated.

**Distances** may be calculated as follows:

1 nautical mile	= 1 852 metres (6,076.1 feet)
1 statute mile	= 1 609.3 metres (5,280 feet)
1 metre	= 3.28 feet

**Temporary & Preliminary Notices** are indicated by a (T) or a (P) before the chart action. Please note that Nautical charts are not hand amended by the Canadian Hydrographic Service for Temporary (T) and Preliminary (P) Notices. It is recommended that mariners chart these corrections in pencil. Listing of charts affected by Temporary and Preliminary Notices are revised and promulgated quarterly under the *Cumulative chart correction list* published in Section 1 of the Monthly Edition.

**Please note that, in addition to the temporary and preliminary changes normally advertised as (T) and (P) Notices, there are a significant number of permanent changes to navigational aids that have been advertised as Preliminary Notices to Mariners while charts are being updated for new editions.**

**Marine Information Report & Suggestion Sheet** - Mariners are requested to notify the responsible authorities when new or suspected dangers to navigation are discovered, changes observed in aids to navigation or corrections to publications are seen to be necessary. Such communications can be made using the *Marine Information Report & Suggestion Sheet* inserted on the last page of each monthly edition of *Notices to Mariners*.

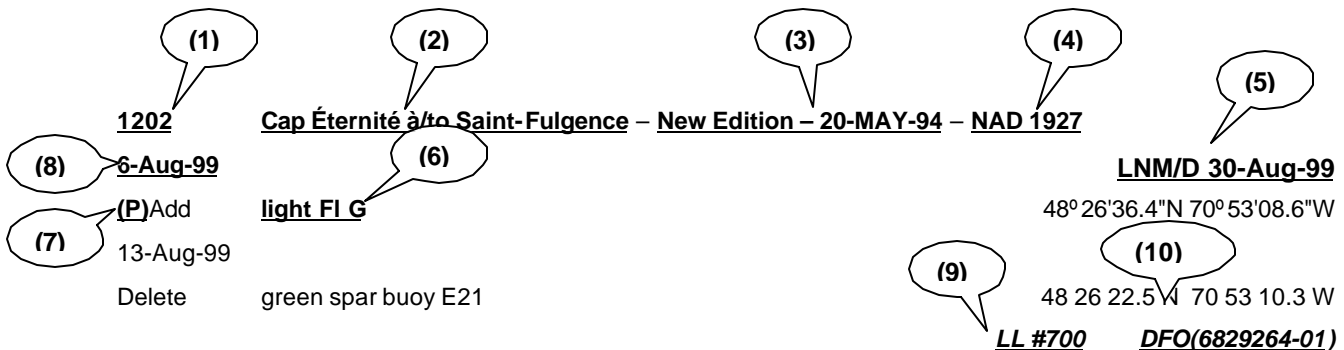
**Monthly edition of Notices to Mariners** - *Notices to Mariners* are issued free of charge on a monthly basis. Mariners now have a choice between specific *Regional* issue(s) they wish to receive. Requests to be placed on or removed from the mailing list should be made by using the form inserted on page *xiii* of each monthly edition. Notification of changes to the mailing addresses, regional issues and/or number of copies required should also be transmitted by means of this form.

**Canadian Nautical Charts & Publications** - A source list of *Canadian Nautical Charts & publications* is published in *Notice No. 14* of the current *Annual Edition of Notices to Mariners*. The source supply and the prices effective at the time of printing are listed. This list is periodically updated in the monthly edition of *Notices to Mariners*.

**NOTE: Cette publication est aussi disponible en français.**

## CHART CORRECTIONS - SECTION II

Corrections to nautical charts will be listed in numeric order by chart number. Each chart correction listed applies only to that particular chart. Related charts, if any, will have their own specific correction listed separately. Users should also refer to CHS Chart 1 Symbols, Abbreviations Terms for additional information pertaining to the correction of charts. The illustration below describes the elements that will comprise a typical Section II chart correction.



- 1 - Chart Number
- 2 - Chart Title
- 3 - Chart's latest New Edition date
- 4 - Horizontal Chart Datum
- 5 - Last Correction

- 6 - Chart action
- 7 - Notice type
- 8 - Weekly chart correction date
- 9 - List of light number
- 10 - Record reference number

The last correction number is identified with the **L**NM/D or **L**ast **N**otice to **M**ariners Number / **D**ate. This number is expressed in either old notice number format (ex.: 594/99) or in day-month-year format which is the date known as the weekly chart correction date shown in the above diagram as item (8).

## ADVISORY

### NOTICES TO SHIPPING (WRITTEN AND BROADCAST)

The Canadian Coast Guard is implementing a number of changes to the aids to navigation system in Canada.

These changes are advertised as Notices to Shipping (Broadcast and Written) by the Canadian Coast Guard and are followed up with Notices to Mariners, then charts are updated by hand correction, reprints or new editions.

The publication of Notices to Mariners and chart revisions are being delayed by the volume of changes that are taking place.

Mariners are advised that all relevant Written Notices to Shipping should be kept until superseded by Notices to Mariners or through revised charts issued by the Canadian Hydrographic Service.

Written Notices to Shipping are published weekly and are available from local Canadian Coast Guard Offices.

The Canadian Hydrographic Service is reviewing the impact of these changes with the Canadian Coast Guard and together we are preparing an action plan on the issuing of chart revisions.

For further information contact your local Canadian Coast Guard office.

#### Newfoundland

St. John's MCTS Centre  
Phone: (709) 772-2083  
Fax: (709) 772-6285

#### Maritimes

Maritimes Regional Operations Centre  
Toll Free in Maritimes 1-800-565-1633  
Phone: (902) 426-6030  
Fax: (902) 426-6334  
<http://www.mar.dfo.mpo.gc.ca/cg/ops/roc.htm>  
Website E-Mail: ROCWeb@mar.dfo-mpo.gc.ca

#### Laurentian

Laurentian Regional Operations Centre GC\SO\COR  
Operational Information Officer  
Phone: (418) 648-5410  
Fax: (418) 648-7244  
E-Mail: OPSAVIS@dfo-mpo.gc.ca

#### Central & Arctic

Sarnia MCTS Centre  
Toll Free in Ontario 1-800-265-0237  
Phone: (519) 337-6360  
Fax: (519) 337-2498

#### Pacific

Regional Marine Information Centre (RMIC)  
Toll free in British Columbia – 1-800-889-8852  
Phone: (604) 666-6011  
Fax: (604) 666-8453  
E-mail: RMIC-Pacific@pac.dfo-mpo.gc.ca  
Notice to Shipping information  
<http://www.pacific.ccg-gcc.gc.ca/epages/mcts/notship/notosh2.htm>

## **DGPS FULLY OPERATIONAL SERVICE**

The Canadian Coast Guard (CCG) announces that the Differential Global Positioning Service (DGPS) Fully Operational Service (FOS) is available for positioning and navigation.

FOS means the service will provide a DGPS broadcast using the type 9 RTCM message for pseudorange corrections at a data transmission rate of 200 baud. Refer to Radio Aids to Marine Navigation (RAMN) for estimated advertised coverage for each differential station.

Users are also advised that differential corrections are based on the NAD 83 datum position of the reference station antenna and positions obtained using DGPS should be referenced to this coordinate system only. DGPS receivers must be set to the WGS 84 datum in order to obtain optimum positioning accuracy.

<b>Table of DGPS Reference Stations in Canada</b>						
<b>Station Name</b>	<b>Id. Nos of reference stations</b>	<b>DGPS Station ID</b>	<b>Geog. Position</b>		<b>Frequency [khz]</b>	<b>Bit/s</b>
			<b>Latitude</b>	<b>Longitude</b>		
Cape Race, NFLD	338,339	940	46 46 N	53 11 W	315	200
Cape Ray, NFLD	340,341	942	47 38 N	59 14 W	288	200
Cape Norman, NFLD	342,343	944	51 30 N	55 49 W	310	200
Rigolet, NFLD	344,345	946	54 15 N	58 30 W	299	200
Partridge Island, NB	326,327	939	45 14 N	66 03 W	295	200
Pt. Escuminiac, NB	332,333	936	47 04 N	64 48 W	319	200
Fox Island, NS	336,337	934	45 20 N	61 05 W	307	200
Western Head, NS	334,335	935	43 59 N	64 40 W	312	200
Hartlen Point, NS (Tentative October 2000)	330, 331	937	44 35 N	63 27 W	298	200
St.-Jean-sur-Richelieu, QC	312,313	929	45 19 N	73 19 W	296	200
Lauzon, QC	316,317	927	46 49 N	71 10 W	309	200
Rivière-du-Loup, QC	318,319	926	47 46 N	69 36 W	300	200
Moisie, QC	320,321	925	50 12 N	66 07 W	313	200
Trois-Rivières, QC	314, 315	928	46 23 N	72 27 W	321	200
Warton, ON	310,311	918	44 45 N	81 07 W	286	200
Cardinal, ON	308,309	919	44 47 N	75 25 W	306	200
Alert Bay, BC	300,301	909	50 35 N	126 55 W	309	200
Amphitrite Pt., BC	302,303	908	48 55 N	125 33 W	315	200
Richmond, BC	304,305	907	49 11 N	123 07 W	320	200
Sandspit, BC	306,307	906	53 14 N	131 49 W	300	200

## **DGPS RECEIVER - WARNING**

The Canadian Coast Guard's Differential Global Positioning System (DGPS) broadcast contains built in health information designed to alert a DGPS user receiver of an out of tolerance or fault condition. During testing, it was found that some user DGPS receivers did not process the health information properly. Improper processing by a user equipment can result in incorrect positions.

Please contact your DGPS manufacturer or supplier to ensure that your receiver is capable of processing the DGPS Reference Station Health information correctly.

## **DGPS USER ALERT**

The Canadian Coast Guard received reports in March 97 of DGPS receivers apparently ignoring the broadcast alarm which should signal the immediate discontinuation of a particular satellite correction. Reports indicate that some user equipment does not properly recognize this "do-not-use" correction flag and as a result erroneously processes it as a correction. This can result in position errors as large as 15 kilometers while the receiver is in DGPS mode. DGPS users are advised that they should contact the manufacturer of their equipment immediately to determine if they require a receiver upgrade.

## DGPS station anomaly report / Rapport d'anomalie des stations DGPS

With the purpose of constantly evaluating the quality of the DGPS service offered, the Canadian Coast Guard is providing the mariner with the following anomaly report. This report will allow us to get well-supported information concerning the anomaly and thus, will facilitate the identification of the origin of the problem. Please fill accordingly each section of this report and forward it by the suggested ways. You will find a legend at the end of this document.

Avec le souci d'évaluer constamment la qualité du service DGPS offert, la Garde côtière met à la disposition du navigateur le présent rapport d'anomalie. Ce rapport servira à bien documenter l'anomalie et, de ce fait, facilitera l'identification ou la recherche de la source du problème. Nous vous prions de bien remplir chaque section de ce rapport et de l'acheminer de la façon suggérée. Vous trouverez une légende à la fin de ce document.

### User informations / Renseignements sur l'utilisateur

Vessel name / Nom du navire: \_\_\_\_\_ Destination: \_\_\_\_\_

Vessel position at the beginning of the anomaly /  
Position du navire au début de l'anomalie : \_\_\_\_\_

Vessel position at the end of the anomaly /  
Position du navire à la fin de l'anomalie : \_\_\_\_\_

### Anomaly report / Rapport d'anomalie

Date and time of the anomaly / Date et heure de l'anomalie: \_\_\_\_\_ Duration / Durée: \_\_\_\_\_

Number of satellites tracked on GPS receiver / Nombre de satellites reçu par le récepteur: \_\_\_\_\_

DGPS site using / Station DGPS utilisée: Freq.: \_\_\_\_\_ kHz SS: \_\_\_\_\_ dB SNR: \_\_\_\_\_ dB

DOP Geometry / Géométrie DOP : \_\_\_\_\_

User receiver operates correctly with other DGPS sites? /

Votre équipement DGPS fonctionne-t-il normalement à l'utilisation d'autres stations DGPS?: Yes/ Oui \_\_\_ No / Non \_\_\_

Comments / Commentaires: \_\_\_\_\_  
\_\_\_\_\_  
\_\_\_\_\_

Point of contact / Personne-ressource: Name/ Nom: \_\_\_\_\_

Phone / Téléphone : \_\_\_\_\_

### Weather conditions / Conditions météo

Winds / Vents : Direction: \_\_\_\_\_ Speed / Vitesse: \_\_\_\_\_ KTS

Temp. °C: \_\_\_\_\_ VIS: \_\_\_\_\_ N.M.

Sea State / État de la mer : \_\_\_\_\_

Bearing and range to electrical storm /

Direction et distance de l'orage : \_\_\_\_\_

Time of the storm / Heure de l'orage: \_\_\_\_\_ UTC

**Essential informations on user equipment to fill / Renseignements indispensables sur l'équipement à remplir:**

### User equipment informations / Renseignements sur l'équipement

GPS receiver / Récepteur GPS: Make / Fabricant: \_\_\_\_\_ Model: \_\_\_\_\_

DGPS beacon receiver / Démodulateur DGPS: Make / Fabricant : \_\_\_\_\_ Model: \_\_\_\_\_

Gyro interface with GPS / Gyro intégré avec le GPS? Yes / Oui : \_\_\_\_\_ No / Non : \_\_\_\_\_

DGPS interfaced with an ECDIS / DGPS intégré dans un SVCEI? Yes / Oui: \_\_\_\_\_ No / Non : \_\_\_\_\_

If yes, please fill below / Si oui, S.V.P. compléter ci-dessous:

ECDIS / SVCEI: Make / Fabricant: \_\_\_\_\_ Model: \_\_\_\_\_

Radar image interfaced / Image radar intégrée?: Yes / Oui: \_\_\_\_\_ No / Non: \_\_\_\_\_

Gyro interfaced with ECDIS / Gyro intégré avec SVCEI? Yes / Oui: \_\_\_\_\_ No / Non: \_\_\_\_\_

Permanent installation or in evaluation / Installation permanente ou en évaluation : \_\_\_\_\_

**This report can be sent the following ways / Ce rapport peut être acheminé selon les façons suivantes:**

1) Fax / Par télécopieur : 613-998-8428 attention Aids to Navigation

2) Mail / Par la poste: Director, Navigation Systems Branch  
Department of Fisheries and Oceans  
200 Kent Street, Station 5130  
Ottawa, ON  
K1A 0E6

Directeur, Direction des systèmes à la navigation maritimes  
Ministère des Pêches et Océans  
200, rue Kent, Station 5130  
Ottawa, ON  
K1A 0E6

**Canada**

**Legend/Légende**

- Position** : Position can be provided by latitude, longitude, bearing and distance, location of a buoy, etc.  
La position peut être donnée en latitude, longitude, relèvement et distance, emplacement de bouée, etc.
- KTS** : Wind speed in knots / Vitesse du vent en noeuds.
- N.M.** : Visibility in Nautical Miles / Visibilité en milles nautiques.
- Freq. kHz** : Frequency in kilohertz / Fréquence en kilohertz .
- SS** : Signal strength in decibel / Force de signal en décibel.
- SNR** : Signal to noise ratio in decibel / Rapport signal-bruit en décibel .
- DOP (dilution of precision)** : Measure of the geometrical «strength » of the GPS satellite configuration. The DOP is measured on a scale of 1 to 10 / Mesure de la « force » géométrique de la configuration satellite. Le DOP est mesuré sur une échelle de 1 à 10
- SVCEI / ECDIS** : Electronic Chart Display and Information System / Système de Visualisation de Cartes Electroniques et d'Information .

# MONTHLY EDITION OF NOTICES TO MARINERS

## MAILING LIST CHANGES

Superintendent, Information and Publications  
Navigation Aids  
Navigation Systems Branch  
Canadian Coast Guard  
Department of Fisheries and Oceans  
Ottawa, ON  
K1A 0E6

Telephone - (613) 990-3037  
Facsimile - (613) 998-8428

Please indicate which edition you would like to receive.

**EASTERN EDITION** (will be comprised of Arctic, Newfoundland, Maritimes, Gulf & River St. Lawrence and Central areas) \_\_\_\_\_

**WESTERN EDITION** (will be comprised of Arctic and Pacific areas) \_\_\_\_\_

**ADD** \_\_\_\_\_ **AMEND** \_\_\_\_\_ **REMOVE** \_\_\_\_\_ **NO. OF COPIES** \_\_\_\_\_

OLD ADDRESS	
NAME	
STREET	APT
CITY	POSTAL CODE
PROVINCE	COUNTRY
NEW ADDRESS	
NAME	
STREET	APT
CITY	POSTAL CODE
PROVINCE	COUNTRY

*ID number above address on label*

*or*

*Attach complete address label to this sheet*



## INDEX

<b>CANADIAN HYDROGRAPHIC SERVICE - Charts.....</b>	<b>1</b>
- Current chart edition dates. ....	1
- Special Announcement.....	8
<b>CANADIAN HYDROGRAPHIC SERVICE PUBLICATION - New Edition of Sailing Directions.....</b>	<b>8</b>

## NUMERICAL INDEX OF CANADIAN CHARTS AFFECTED

Chart No.	Page	Chart No.	Page	Chart No.	Page
1310	9	L/C 4006	13	6214	20
1311	9	4011	13		
1437	9	L/C 4023	13		
1438	9	4114	13		
1513	9,10	L/C 4116	14		
1555	1	L/C 4118	14		
L/C 2000	10	4141	14		
2022	10	4236	14		
2023	10	L/C 4240	14		
2024	10	L/C 4241	14		
2025	10	4245	15		
2026	11	4308	15		
2028	11	4340	15		
2029	11	4376	15		
2042	11	4394	15		
2043	12	4395	15,16		
2064	12	4396	16		
L/C 2077	12	4437	16		
2085	12	4443	16		
2086	12	L/C 4464	16		
L/C 2120	12	4497	16		
L/C 2201	12, 13	4498	17		
2204	1	4595	17		
2241	13	4905	17		
3959	1	4911	17		
L/C 4001	13	6021	17-19		
4003	13	6022	19,20		

**SECTION 1 – Edition 07/2001  
SAFETY AND GENERAL INFORMATION**

**CANADIAN HYDROGRAPHIC SERVICE - Charts.**

CHARTS	MAIN TITLE	SCALE	PUBLISHED	CAT#	PRICE
<b>New Editions.</b>					
1555	Lac la Cave	1:25:000	25-May-01	3	\$12.00
2204	Byng Inlet to/à Killarney	1:20:000	23-Feb-01	3	\$28.00
	Note: This chart incorporates Notices dated 06-APR-2001 (DFO #6601437 and #6601438) and is still affected by Notice 115(P)/94.				
<b>Reprint.</b>					
3959	Hudson Bay Passage	1:40:000	06-Apr-01	2	\$20.00

**CANADIAN HYDROGRAPHIC SERVICE - Current chart edition dates.**

**CHART EDITIONS**

The three terms described below are used to indicate the publication status of Canadian charts.

**NEW CHART**

The first publication of a Canadian chart embracing an area not previously charted to the scale shown, or embracing an area different from any existing Canadian chart.

**NEW EDITION**

A new issue of an existing chart containing amendments essential to navigation in addition to those issued in Notice to Mariners and making existing editions obsolete.

**REPRINTS**

A new issue of the current edition of a chart incorporating no amendments of navigational significance other than those previously promulgated in Notice to Mariners. It may also contain amendments from other sources provided they are not essential to navigation. Previous printings of the current edition remain in force.

Chart Number	Category	Edition Date	Reprint Date	Chart Number	Category	Edition Date	Reprint Date
1202	NEWEDN	10-SEP-1999		1432	NEWCHT	09-JUL-1999	
1203	NEWEDN	04-JAN-1985	10-FEB-1995	1433	NEWCHT	28-MAY-1999	
1209	NEWEDN	14-DEC-1984	02-AUG-1996	1434	NEWCHT	01-MAR-1996	
1220	NEWEDN	28-FEB-1997		1435	NEWCHT	15-DEC-1995	
1221	NEWEDN	23-APR-1999		1436	NEWCHT	15-JAN-1993	03-JAN-1997
1223	NEWEDN	03-OCT-1997		1437	NEWCHT	19-MAR-1993	30-MAY-1997
1226	NEWEDN	19-NOV-1999		1438	NEWEDN	06-OCT-1995	
1229	NEWEDN	31-DEC-1976	15-DEC-1995	1439	NEWEDN	08-DEC-2000	
1230	NEWEDN	29-FEB-1980	10-FEB-1989	1509	NEWCHT	18-MAY-1990	27-JUN-1997
1233	NEWEDN	28-MAY-1999		1510	NEWEDN	23-JAN-1998	
L/C1234	NEWEDN	24-JUL-1998		1512	NEWEDN	03-AUG-1984	09-OCT-1992
1235	NEWEDN	31-MAR-2000		1513	NEWEDN	07-JUN-1996	
L/C1236	NEWEDN	25-SEP-1998		1514	NEWCHT	24-JUL-1998	
1260	NEWCHT	04-JAN-1991		1515	NEWCHT	24-JUL-1998	
1310	NEWEDN	24-MAR-2000		1550	NEWEDN	05-JAN-1996	
1311	NEWCHT	05-NOV-1999		1551	NEWEDN	27-JUN-1986	
1312	NEWEDN	02-APR-1999		1552	NEWEDN	05-JUN-1998	
1313	NEWEDN	28-JUL-2000		1553	NEWCHT	15-FEB-1980	
1314	NEWEDN	29-SEP-2000		1553	NEWEDN	16-FEB-2001	
1315	NEWEDN	19-MAY-2000		1554	NEWEDN	16-SEP-1988	15-AUG-1997
1316	NEWEDN	26-FEB-1999		1555	NEWEDN	25-MAY-2001	
1317	NEWEDN	15-JAN-1999		L/C2000	NEWEDN	10-APR-1998	
1350	NEWCHT	06-JUL-1984	25-MAR-1994	2006	NEWEDN	03-JUL-1987	
1351	NEWCHT	21-SEP-1984	11-AUG-1995	2006	NEWEDN	31-MAR-2000	
1361	NEWEDN	28-MAY-1976	01-MAR-1996	2007	NEWEDN	10-SEP-1982	09-SEP-1994
1400	NEWEDN	25-JUN-1999		2011	NEWCHT	08-JUL-1988	
1409	NEWEDN	21-MAY-1999		2017	NEWCHT	13-JUL-1990	
1410	NEWEDN	25-JUN-1999		2018	NEWCHT	22-JUN-1990	
1411	NEWEDN	02-AUG-1996		2021	NEWEDN	25-JUN-1993	

**SECTION 1 – Edition 07/2001  
SAFETY AND GENERAL INFORMATION**

<b>Chart Number</b>	<b>Category</b>	<b>Edition Date</b>	<b>Reprint Date</b>	<b>Chart Number</b>	<b>Category</b>	<b>Edition Date</b>	<b>Reprint Date</b>
2022	NEWEDN	02-AUG-1996		2268	NEWEDN	31-MAR-1989	06-MAY-1994
2023	NEWEDN	01-MAR-1985	24-MAR-1995	2273	NEWCHT	13-OCT-1955	22-AUG-1975
2024	NEWEDN	29-MAR-1985	16-DEC-1994	2274	NEWEDN	08-JUN-1990	
2025	NEWEDN	01-MAR-1985	28-MAY-1993	2274	NEWEDN	07-APR-2000	
2026	NEWEDN	05-APR-1985	15-DEC-1995	L/C2282	NEWEDN	07-JUN-1996	
2028	NEWEDN	05-JUN-1998		2283	NEWCHT	30-JUL-1999	
2029	NEWEDN	20-MAR-1987	08-MAY-1992	2284	NEWEDN	27-OCT-1989	
2042	NEWEDN	07-OCT-1994		2284	NEWEDN	04-AUG-2000	
2043	NEWCHT	29-NOV-1968	26-MAR-1982	2286	NEWEDN	21-JAN-1983	25-AUG-1995
2044	NEWCHT	28-FEB-1997		2289	NEWEDN	16-OCT-1987	05-JUN-1992
2047	NEWCHT	07-APR-1995		2291	NEWEDN	31-MAR-2000	
2048	NEWCHT	11-OCT-1991		2292	NEWEDN	28-APR-1989	05-APR-1996
2049	NEWCHT	10-MAY-1985		2293	NEWEDN	30-MAR-2001	
2050	NEWCHT	10-MAY-1985		2294	NEWEDN	25-FEB-2000	
2053	NEWCHT	10-MAY-1985		2297	NEWEDN	20-JAN-1960	19-SEP-1997
2054	NEWCHT	10-MAY-1985		2298	NEWEDN	02-JUL-1958	13-FEB-1981
2055	NEWCHT	05-JUL-1991		2299	NEWEDN	30-SEP-1983	30-JUN-1995
2058	NEWEDN	25-FEB-2000		L/C2300	NEWCHT	24-APR-1998	
2059	NEWCHT	31-JUL-1998		L/C2301	NEWEDN	22-FEB-1991	
L/C2060	NEWEDN	28-JUN-1985	01-JUL-1994	L/C2302	NEWEDN	02-AUG-1985	
2064	NEWEDN	05-MAR-1999		2303	NEWEDN	18-MAY-1955	29-JUN-1990
2067	NEWEDN	15-JUN-2001		2304	NEWEDN	31-MAY-1957	01-FEB-1980
2069	NEWEDN	19-MAY-2000		2305	NEWEDN	17-DEC-1956	08-FEB-1980
2070	NEWEDN	29-APR-1983		2306	NEWEDN	03-MAY-1957	09-MAY-1975
2077	NEWEDN	23-APR-1999		2307	NEWEDN	31-AUG-1956	11-MAR-1977
2085	NEWEDN	18-FEB-2000		2308	NEWEDN	19-JUL-1946	21-APR-1978
2086	NEWCHT	09-JUN-1989	03-APR-1992	2309	NEWEDN	23-JUL-1999	
L/C2100	NEWEDN	25-DEC-1998		2310	NEWEDN	03-JUN-1946	01-FEB-1980
L/C2110	NEWEDN	29-MAY-1998		2311	NEWEDN	23-APR-1999	
L/C2120	NEWEDN	06-NOV-1998		2312	NEWEDN	13-NOV-1987	08-APR-1994
L/C2121	NEWCHT	18-DEC-1987		2313	NEWEDN	21-JUN-1957	28-OCT-1977
L/C2122	NEWEDN	05-JUL-1991	05-APR-1996	2314	NEWEDN	23-APR-1999	
L/C2123	NEWEDN	12-MAR-1993	04-APR-1997	2315	NEWEDN	22-APR-1988	
2140	NEWCHT	16-SEP-1988		2318	NEWEDN	03-DEC-1982	
2165	NEWCHT	08-MAR-1991		2400	NEWEDN	29-JUN-1990	
2181	NEWEDN	10-NOV-1989		L/C3000	NEWEDN	20-JAN-1989	22-APR-1994
L/C2200	NEWEDN	01-MAY-1987	17-APR-1992	3001	NEWEDN	23-FEB-2001	
L/C2201	NEWEDN	18-NOV-1998		L/C3002	NEWEDN	16-DEC-1994	
2202	NEWEDN	04-APR-1986		3050	NEWEDN	03-MAY-1996	
2202	NEWEDN	26-MAR-1999		3052	NEWEDN	07-OCT-1994	
2203	NEWEDN	07-OCT-1988		3053	NEWCHT	11-APR-1986	02-FEB-1990
2203	NEWEDN	30-JUN-2000		3055	NEWCHT	21-JUN-1991	
2204	NEWEDN	23-FEB-2001		3056	NEWCHT	21-JUN-1991	
2205	NEWEDN	18-DEC-1987	30-JUN-2000	3057	NEWCHT	21-JUN-1991	
2206	NEWCHT	27-JUN-1997		3058	NEWCHT	21-JUN-1991	
2218	NEWCHT	13-APR-1984		3061	NEWEDN	29-OCT-1999	
2221	NEWEDN	07-JUN-1996		3062	NEWCHT	24-MAY-1985	
2222	NEWCHT	13-APR-1984		3080	NEWEDN	03-APR-1992	
2223	NEWCHT	13-APR-1984		3311	NEWEDN	31-DEC-1993	
2225	NEWEDN	08-MAR-1991	11-JUL-1997	3312	NEWCHT	31-JAN-1986	05-APR-1991
2226	NEWEDN	22-NOV-1991		3313	NEWCHT	28-JUL-1995	
L/C2228	NEWCHT	16-FEB-1990		3410	NEWCHT	24-MAR-1995	
2235	NEWEDN	06-FEB-1987		3411	NEWCHT	24-MAR-1995	
2235	NEWEDN	24-SEP-1999		3415	NEWEDN	13-FEB-1987	08-APR-1994
2241	NEWCHT	30-JUL-1999		3419	NEWCHT	02-JUL-1993	
L/C2243	NEWEDN	30-AUG-1985	08-APR-1994	3424	NEWCHT	24-JUL-1987	02-APR-1993
2244	NEWEDN	12-JUN-1987		3440	NEWEDN	25-DEC-1998	
2244	NEWEDN	03-NOV-2000		3441	NEWEDN	12-AUG-1988	06-DEC-1996
L/C2245	NEWEDN	06-JUN-1986	05-APR-1996	3442	NEWEDN	03-JUN-1988	06-DEC-1996
2250	NEWCHT	09-MAY-1986		3443	NEWEDN	30-JAN-1998	
2251	NEWCHT	11-APR-1986	26-JUN-1992	3447	NEWCHT	10-DEC-1999	
2257	NEWEDN	02-NOV-1984	07-JUN-1996	3458	NEWEDN	10-MAR-1995	
2258	NEWEDN	16-JUN-1989	05-APR-1996	3459	NEWEDN	24-OCT-1997	
2259	NEWEDN	15-JUN-1962	02-JUL-1993	L/C3461	NEWCHT	06-JAN-1984	02-DEC-1994
2260	NEWEDN	13-JUN-1986		L/C3462	NEWEDN	23-OCT-1998	
2260	NEWEDN	05-FEB-1999		L/C3463	NEWEDN	03-OCT-1997	
2261	NEWEDN	13-JUN-1986	21-APR-1995	3473	NEWEDN	13-FEB-1987	04-DEC-1992
2266	NEWCHT	22-JUN-1984		3475	NEWEDN	27-MAY-1988	02-JUL-1993
2267	NEWCHT	22-JUN-1984		3476	NEWCHT	31-AUG-1984	12-MAY-2000

**SECTION 1 – Edition 07/2001  
SAFETY AND GENERAL INFORMATION**

<b>Chart Number</b>	<b>Category</b>	<b>Edition Date</b>	<b>Reprint Date</b>	<b>Chart Number</b>	<b>Category</b>	<b>Edition Date</b>	<b>Reprint Date</b>
3477	NEWEDN	03-MAY-1985	08-SEP-1989	3720	NEWEDN	12-FEB-1988	03-SEP-1993
3478	NEWEDN	24-FEB-1995		3721	NEWEDN	26-AUG-1994	
3481	NEWEDN	22-SEP-2000		3722	NEWEDN	07-FEB-1964	04-SEP-1987
3488	NEWCHT	21-OCT-1994		3723	NEWEDN	29-JUN-1984	
3489	NEWCHT	21-OCT-1994		3724	NEWEDN	23-MAY-1980	21-APR-1995
3490	NEWEDN	25-JUL-1997		3726	NEWEDN	23-MAY-1980	06-JAN-1989
3491	NEWEDN	05-JAN-1996		3727	NEWEDN	29-JUN-1962	24-MAR-1995
3492	NEWCHT	27-JUN-1997	27-NOV-1998	3728	NEWEDN	05-FEB-1982	24-JAN-1997
3493	NEWEDN	18-DEC-1998		3729	NEWEDN	06-MAR-1998	
3494	NEWEDN	18-DEC-1998		3730	NEWCHT	30-NOV-1960	21-DEC-1990
3495	NEWEDN	18-DEC-1998		3733	NEWCHT	01-FEB-1956	
L/C3512	NEWEDN	25-DEC-1998		3734	NEWEDN	09-JUL-1976	24-MAY-1991
3513	NEWEDN	29-OCT-1999		3736	NEWEDN	31-AUG-1990	
3514	NEWEDN	02-AUG-1996		3737	NEWEDN	14-AUG-1987	21-APR-1995
3515	NEWCHT	18-JAN-1991	03-JUN-1994	3738	NEWEDN	04-FEB-1983	24-MAR-1995
3526	NEWEDN	23-FEB-2001		3739	NEWEDN	03-FEB-1984	01-SEP-1989
3527	NEWEDN	06-APR-2001		3740	NEWEDN	20-MAY-1977	06-DEC-1996
3534	NEWEDN	07-MAY-1993		3741	NEWEDN	15-FEB-1963	30-JUN-1989
3535	NEWEDN	16-AUG-1985	16-APR-1993	3742	NEWEDN	16-JUL-1982	02-AUG-1996
3536	NEWCHT	21-APR-1978	16-APR-1993	3743	NEWEDN	25-MAR-1977	10-FEB-1995
3537	NEWCHT	27-SEP-1985	22-JUN-1990	3744	NEWEDN	20-MAY-1988	23-FEB-2001
3538	NEWEDN	27-NOV-1992	02-AUG-1996	3745	NEWEDN	12-JUN-1998	
3539	NEWEDN	04-AUG-1989	25-APR-1997	3746	NEWEDN	12-AUG-1977	02-JUL-1993
3540	NEWEDN	22-MAY-1992		3747	NEWEDN	16-SEP-1977	30-MAY-1997
3541	NEWEDN	29-JUL-1994		3753	NEWEDN	30-APR-1959	12-AUG-1988
3542	NEWEDN	01-JUL-1994		3761	NEWEDN	19-AUG-1988	
3543	NEWEDN	27-NOV-1992	30-MAY-1997	3772	NEWEDN	30-OCT-1964	29-JAN-1993
3544	NEWEDN	25-SEP-1987	01-MAY-1998	3773	NEWEDN	26-APR-1985	06-DEC-1996
3545	NEWCHT	28-APR-1989	23-FEB-2001	3781	NEWEDN	18-MAY-1959	15-MAR-1991
3546	NEWCHT	28-APR-1989	11-JUL-1997	3785	NEWEDN	04-OCT-1991	12-JUN-1998
3547	NEWCHT	28-APR-1989	05-APR-1996	3787	NEWEDN	29-JUL-1977	04-APR-1997
3548	NEWEDN	26-SEP-1997		3794	NEWEDN	07-FEB-1975	17-MAR-1989
3549	NEWCHT	03-DEC-1993	05-APR-1996	3795	NEWEDN	01-MAY-1964	09-JUL-1993
3550	NEWCHT	03-DEC-1993	02-JAN-1998	3802	NEWEDN	24-NOV-1989	07-MAY-1999
3552	NEWCHT	02-JAN-1987	02-APR-1993	3807	NEWEDN	05-FEB-1999	
3555	NEWEDN	27-JUN-1986	09-APR-1993	3808	NEWCHT	30-MAR-1962	13-OCT-1989
3559	NEWCHT	15-JUN-1979	02-FEB-1990	3809	NEWEDN	24-AUG-1979	24-MAR-1995
3564	NEWCHT	04-DEC-1987	08-SEP-1995	3811	NEWEDN	06-DEC-1963	27-SEP-1991
3598	NEWEDN	14-AUG-1987	11-OCT-1991	3825	NEWEDN	16-DEC-1977	09-JUN-1989
3601	NEWCHT	26-AUG-1994		L/C3853	NEWEDN	02-MAR-1990	05-APR-1996
L/C3602	NEWEDN	24-MAY-1985	12-AUG-1994	L/C3854	NEWEDN	23-OCT-1987	23-APR-1993
L/C3603	NEWEDN	23-OCT-1981	01-NOV-1991	3855	NEWEDN	13-JAN-1967	26-APR-1991
L/C3604	NEWEDN	06-NOV-1987	13-JUN-1997	3857	NEWEDN	17-NOV-1967	10-JUL-1987
LC3605	NEWEDN	06-MAR-1998		3858	NEWEDN	28-JUL-1967	28-JUL-1989
3606	NEWEDN	23-FEB-2001		3859	NEWEDN	21-AUG-1998	
3623	NEWEDN	26-AUG-1977	06-JAN-1989	3860	NEWEDN	12-SEP-1969	05-JAN-1990
3624	NEWEDN	19-AUG-1988	22-APR-1994	3863	NEWEDN	25-APR-1980	16-MAR-1990
3625	NEWCHT	25-OCT-1968	10-MAR-1989	3864	NEWEDN	11-MAY-1962	17-DEC-1993
3646	NEWEDN	30-JUN-1995		3865	NEWEDN	01-NOV-1955	10-JUL-1987
3647	NEWEDN	05-JUL-1985	02-JAN-1998	3868	NEWEDN	12-JUL-1968	19-APR-1991
3651	NEWEDN	09-APR-1993		3869	NEWEDN	28-NOV-1986	02-MAR-1990
3668	NEWEDN	07-APR-2000		3890	NEWCHT	14-MAR-1986	07-APR-1995
3670	NEWEDN	21-OCT-1994		3891	NEWCHT	08-SEP-1989	01-AUG-1997
3671	NEWEDN	27-AUG-1982	03-JUN-1994	3892	NEWCHT	13-JAN-1984	03-JUN-1994
3673	NEWCHT	01-DEC-1995		3893	NEWCHT	13-JAN-1984	
3674	NEWCHT	01-DEC-1995		3894	NEWEDN	12-JUN-1998	
3675	NEWCHT	20-NOV-1998		3895	NEWCHT	15-JUN-1984	09-JUN-1989
3676	NEWCHT	20-NOV-1998		LC3902	NEWEDN	09-DEC-1988	27-JUN-1997
3679	NEWCHT	14-JUN-1991	21-FEB-1997	3909	NEWCHT	11-DEC-1987	03-JUN-1994
3680	NEWEDN	07-APR-1978	26-APR-1991	3920	NEWCHT	18-JAN-1991	
3681	NEWCHT	08-JUN-1990		3921	NEWEDN	15-DEC-1995	
3682	NEWEDN	05-JUN-1987		3927	NEWEDN	29-MAY-1998	
3683	NEWEDN	06-MAR-1998		3931	NEWCHT	21-FEB-1992	23-MAR-2001
3685	NEWEDN	25-AUG-1995		3932	NEWCHT	21-FEB-1992	12-JUN-1998
3686	NEWCHT	08-APR-1988	02-DEC-1994	3933	NEWEDN	20-JAN-1989	19-FEB-1993
3710	NEWEDN	04-JUL-1986	15-JUN-1990	3934	NEWCHT	21-FEB-1992	02-JUN-1995
3711	NEWEDN	15-JUN-1984	19-FEB-1993	3935	NEWCHT	28-JAN-2000	
3717	NEWEDN	28-JUL-1995		3936	NEWCHT	20-APR-2001	
3719	NEWEDN	17-APR-1961	11-NOV-1988	3937	NEWCHT	07-JUL-2000	

**SECTION 1 – Edition 07/2001  
SAFETY AND GENERAL INFORMATION**

<b>Chart Number</b>	<b>Category</b>	<b>Edition Date</b>	<b>Reprint Date</b>	<b>Chart Number</b>	<b>Category</b>	<b>Edition Date</b>	<b>Reprint Date</b>
3940	NEWCHT	01-MAR-1996		4276	NEWEDN	25-JUL-1997	
3955	NEWCHT	15-FEB-1985	20-MAY-1994	4277	NEWEDN	17-APR-1998	
3956	NEWEDN	01-MAR-1996		4278	NEWEDN	20-MAR-1998	
3957	NEWEDN	05-JUN-1998		4279	NEWEDN	28-AUG-1998	
3958	NEWEDN	24-MAR-1995		4281	NEWEDN	20-FEB-1987	14-JUL-1995
3959	NEWCHT	11-DEC-1987	06-APR-2001	4306	NEWEDN	14-JUN-1985	07-JUN-1996
3960	NEWCHT	13-AUG-1993	16-APR-1999	4307	NEWEDN	15-FEB-1985	13-NOV-1992
3962	NEWEDN	25-FEB-2000		4308	NEWEDN	07-SEP-1984	27-SEP-1991
3963	NEWCHT	26-OCT-1990	12-JUN-1998	L/C4320	NEWEDN	26-SEP-1997	
3964	NEWEDN	30-APR-1999		L/C4321	NEWEDN	11-OCT-1985	01-FEB-1991
3994	NEWEDN	20-JAN-1989	22-SEP-1995	4328	NEWEDN	10-JUL-1998	
4000	NEWEDN	14-DEC-1984		L/C4335	NEWEDN	14-AUG-1998	
L/C4001	NEWEDN	01-DEC-1995		4337	NEWEDN	03-JAN-1986	
L/C4002	NEWEDN	27-DEC-1991	05-JUL-1996	4340	NEWEDN	12-APR-1991	
4003	NEWEDN	14-DEC-1984	29-JUL-1994	4342	NEWEDN	03-JUN-1988	26-APR-1991
L/C4006	NEWEDN	14-DEC-1984	19-FEB-1993	L/C4363	NEWEDN	01-NOV-1985	13-NOV-1992
L/C4010	NEWEDN	18-NOV-1983	10-JUL-1992	4365	NEWEDN	08-DEC-1972	29-FEB-1980
4011	NEWEDN	31-OCT-1997		L/C4367	NEWEDN	01-NOV-1985	06-JUL-1990
L/C4012	NEWEDN	13-MAR-1987	14-JUL-1995	L/C4374	NEWEDN	27-DEC-1985	26-MAR-1993
L/C4013	NEWEDN	07-NOV-1986	03-JUL-1992	L/C4375	NEWEDN	25-OCT-1985	01-JAN-1993
L/C4015	NEWEDN	24-JUL-1992		4376	NEWEDN	02-OCT-1987	11-AUG-1995
L/C4016	NEWEDN	05-MAY-1995		4377	NEWEDN	06-NOV-1998	
L/C4017	NEWEDN	16-JUN-1995		4379	NEWEDN	31-OCT-1986	14-FEB-1992
L/C4020	NEWEDN	27-DEC-1991		4381	NEWEDN	17-JAN-1986	03-MAY-1996
L/C4021	NEWEDN	27-DEC-1991		4384	NEWEDN	31-OCT-1986	13-AUG-1993
L/C4022	NEWEDN	27-DEC-1991	02-AUG-1996	L/C4385	NEWEDN	07-JUN-1996	
L/C4023	NEWEDN	28-NOV-1986	05-JAN-1996	4386	NEWEDN	03-OCT-1986	24-MAR-1995
4024	NEWEDN	03-MAR-2000		4391	NEWEDN	21-FEB-1992	
L/C4025	NEWEDN	27-DEC-1991		4394	NEWEDN	14-SEP-1990	
4026	NEWEDN	12-JAN-2001		4395	NEWEDN	25-MAY-1990	
L/C4045	NEWCHT	08-AUG-1986		4396	NEWEDN	19-FEB-1988	30-JUL-1993
4047	NEWEDN	09-OCT-1998		4399	NEWCHT	03-APR-1942	26-AUG-1983
L/C4049	NEWEDN	19-MAY-1995		4402	NEWEDN	25-DEC-1998	
L/C4098	NEWCHT	21-SEP-1984		L/C4403	NEWEDN	21-JUN-1985	24-DEC-1993
L/C4099	NEWCHT	21-SEP-1984		4404	NEWEDN	12-MAY-2000	
4114	NEWCHT	08-MAY-1992		L/C4405	NEWEDN	12-JUL-1985	21-JUL-1989
4115	NEWCHT	31-DEC-1999		L/C4406	NEWEDN	27-FEB-1998	
L/C4116	NEWCHT	09-APR-1993		4416	NEWEDN	01-MAY-1998	
4117	NEWCHT	28-OCT-1988		4419	NEWEDN	12-AUG-1988	02-FEB-1996
L/C4118	NEWEDN	13-NOV-1998		4420	NEWEDN	26-JAN-2001	
4124	NEWEDN	07-APR-2000		4421	NEWEDN	11-OCT-1968	23-MAR-1979
4130	NEWCHT	30-MAY-1969	17-DEC-1976	4422	NEWEDN	10-OCT-1969	17-JUN-1994
4140	NEWCHT	07-JAN-1972	02-JUL-1982	4425	NEWEDN	02-MAY-1980	17-OCT-1997
4141	NEWEDN	01-NOV-1996		4426	NEWEDN	18-MAR-1988	
4142	NEWEDN	01-NOV-1996		4428	NEWEDN	06-OCT-1978	
4145	NEWEDN	22-MAR-1991		4429	NEWEDN	04-JUN-1993	
4170	NEWCHT	28-FEB-1992		4430	NEWEDN	02-OCT-1981	21-MAY-1993
4201	NEWEDN	11-AUG-2000		4432	NEWEDN	14-DEC-1984	15-JUN-1990
4202	NEWEDN	31-DEC-1999		4437	NEWEDN	17-MAY-1991	
4203	NEWEDN	14-APR-2000		4440	NEWEDN	18-JUL-1980	
4209	NEWCHT	21-OCT-1994		4443	NEWCHT	16-JUN-1967	18-FEB-1977
4210	NEWCHT	05-APR-1991		4445	NEWCHT	17-JUN-1949	07-DEC-1979
4211	NEWEDN	07-DEC-1990	02-JUN-1995	4446	NEWCHT	06-JAN-1953	31-DEC-1993
L/C4227	NEWCHT	24-MAY-1991		4447	NEWEDN	09-NOV-1984	
L/C4230	NEWCHT	15-JUN-1990	26-JUN-1998	4448	NEWEDN	27-APR-1990	
L/C4233	NEWCHT	11-JAN-1991		4449	NEWEDN	03-JUL-1998	
L/C4234	NEWCHT	10-APR-1987	26-DEC-1997	4450	NEWEDN	02-MAR-1973	13-NOV-1987
4235	NEWEDN	28-APR-2000		L/C4451	NEWEDN	27-MAR-1987	15-JUL-1988
4236	NEWCHT	30-JAN-1987	28-JUL-1995	4452	NEWEDN	29-JUL-1983	
4237	NEWEDN	02-JUN-2000		4453	NEWEDN	17-DEC-1982	
L/C4240	NEWCHT	06-OCT-1989	06-JUN-1997	4454	NEWEDN	03-FEB-1978	
L/C4241	NEWCHT	01-DEC-1989	02-AUG-1996	4455	NEWEDN	10-SEP-1976	20-OCT-1989
L/C4242	NEWEDN	28-AUG-1992		4456	NEWEDN	19-DEC-1980	17-JUN-1994
L/C4243	NEWCHT	20-JUN-1986	25-AUG-1989	4459	NEWEDN	25-JUN-1999	
4244	NEWCHT	21-FEB-1986	26-APR-1991	4460	NEWEDN	11-SEP-1987	03-MAY-1991
4245	NEWEDN	19-NOV-1999		L/C4462	NEWEDN	28-JUN-1985	06-JUN-1997
L/C4255	NEWCHT	27-JUL-1990		L/C4463	NEWEDN	09-AUG-1985	15-JUN-1990
4266	NEWCHT	29-SEP-1989		L/C4464	NEWEDN	11-OCT-1985	15-JUN-1990
4275	NEWEDN	23-DEC-1983	03-MAY-1996	4466	NEWEDN	17-MAY-1991	01-MAR-1996

**SECTION 1 – Edition 07/2001  
SAFETY AND GENERAL INFORMATION**

Chart Number	Category	Edition Date	Reprint Date	Chart Number	Category	Edition Date	Reprint Date
4467	NEWEDN	21-MAR-1969	01-MAR-1996	4643	NEWEDN	03-MAY-1985	15-MAY-1992
4468	NEWEDN	12-JUL-1985		4644	NEWEDN	25-JUN-1999	
4469	NEWEDN	08-NOV-1985		4652	NEWEDN	31-OCT-1980	
4470	NEWEDN	04-JAN-1980		4653	NEWEDN	12-MAR-1976	24-MAR-1995
4471	NEWEDN	11-FEB-1977	11-AUG-1989	4654	NEWCHT	27-OCT-1952	22-SEP-1978
4472	NEWEDN	14-AUG-1981		4658	NEWCHT	08-MAY-1970	15-FEB-1980
4473	NEWEDN	25-NOV-1977		4659	NEWCHT	10-OCT-1957	08-SEP-1978
4474	NEWEDN	28-MAY-1999		4661	NEWCHT	20-SEP-1955	23-JUN-1989
4483	NEWEDN	12-AUG-1988		4663	NEWCHT	10-OCT-1957	03-SEP-1976
L/C4485	NEWEDN	26-SEP-1997		4665	NEWCHT	10-OCT-1957	08-MAY-1981
4486	NEWEDN	19-FEB-1999		4666	NEWCHT	10-OCT-1957	20-JUN-1986
4491	NEWCHT	06-MAY-1966	01-FEB-1980	4667	NEWEDN	08-OCT-1965	13-AUG-1976
4492	NEWCHT	04-FEB-1966	25-JUL-1980	4668	NEWCHT	10-OCT-1957	23-OCT-1987
4497	NEWEDN	30-JUL-1971	12-OCT-1979	4669	NEWCHT	10-OCT-1957	29-MAR-1985
4498	NEWEDN	23-OCT-1987	03-NOV-1995	4670	NEWCHT	10-OCT-1957	29-JUL-1977
4504	NEWCHT	14-FEB-1964	23-JAN-1976	4679	NEWEDN	31-DEC-1976	04-JUN-1982
4505	NEWCHT	14-FEB-1964	14-FEB-1975	4680	NEWCHT	02-JAN-1959	27-FEB-1976
4506	NEWCHT	28-FEB-1964	25-JUN-1982	4682	NEWCHT	19-OCT-1962	01-MAY-1987
4507	NEWCHT	28-FEB-1964	30-JAN-1976	L/C4700	NEWEDN	30-DEC-1994	
4509	NEWCHT	05-DEC-1969	21-JUL-1978	4701	NEWCHT	27-DEC-1963	23-OCT-1981
4510	NEWCHT	22-MAR-1968	15-JUL-1994	4702	NEWCHT	17-JAN-1964	28-SEP-1990
4511	NEWCHT	10-JUL-1964	17-OCT-1980	4703	NEWEDN	31-JAN-1964	26-AUG-1994
4512	NEWCHT	30-OCT-1964	09-FEB-1979	4712	NEWCHT	21-FEB-1964	01-FEB-1974
4514	NEWEDN	23-OCT-1981	29-SEP-1989	4722	NEWEDN	27-FEB-1987	
4515	NEWEDN	20-NOV-1998		4724	NEWEDN	20-MAY-1960	08-SEP-1978
4516	NEWEDN	02-NOV-1962	10-DEC-1976	4725	NEWCHT	09-JUN-1953	28-AUG-1981
4518	NEWCHT	18-OCT-1951	26-JAN-1979	4728	NEWEDN	16-JUN-1995	
4519	NEWCHT	13-OCT-1951	04-FEB-1983	L/C4730	NEWEDN	07-OCT-1983	17-OCT-1997
L/C4520	NEWEDN	02-JUN-1995		L/C4731	NEWEDN	16-DEC-1994	
4521	NEWEDN	04-JUN-1965	08-SEP-1978	4732	NEWEDN	27-DEC-1968	22-FEB-1980
4522	NEWCHT	15-JUL-1959	04-SEP-1981	4744	NEWCHT	22-FEB-1963	27-NOV-1981
4523	NEWCHT	27-MAR-1964	13-JUN-1975	4745	NEWCHT	17-MAY-1963	09-OCT-1987
4524	NEWEDN	07-FEB-1964	15-AUG-1980	4763	NEWCHT	01-FEB-1963	26-JUL-1985
4529	NEWEDN	30-SEP-1988		4764	NEWCHT	01-FEB-1963	09-NOV-1990
4530	NEWEDN	11-MAR-1983	17-APR-1992	4765	NEWCHT	29-NOV-1963	26-APR-1985
4531	NEWCHT	24-MAY-1974	14-MAR-1997	4766	NEWCHT	06-DEC-1963	05-APR-1996
4538	NEWEDN	26-MAR-1976		4767	NEWCHT	06-DEC-1963	06-JUL-1990
4540	NEWCHT	10-OCT-1957	26-JAN-1979	4769	NEWEDN	19-SEP-1975	03-MAY-1985
4541	NEWCHT	10-OCT-1957	03-OCT-1980	4771	NEWEDN	02-JUL-1976	29-JUL-1983
4542	NEWEDN	09-SEP-1966	23-JAN-1976	4773	NEWCHT	29-NOV-1963	29-DEC-1978
4582	NEWCHT	14-FEB-1964	10-SEP-1976	4774	NEWCHT	24-JAN-1964	19-MAR-1982
4583	NEWCHT	16-JAN-1961	02-JUL-1982	L/C4775	NEWEDN	09-SEP-1983	02-MAY-1997
4584	NEWCHT	02-JAN-1959	14-NOV-1980	L/C4776	NEWEDN	08-JUL-1983	
4585	NEWCHT	02-JAN-1959	29-AUG-1980	L/C4817	NEWCHT	11-APR-1986	
4587	NEWEDN	04-SEP-1987	21-AUG-1992	4830	NEWCHT	14-FEB-1986	
4591	NEWCHT	02-JAN-1959	18-AUG-1978	L/C4831	NEWCHT	26-DEC-1986	
4592	NEWEDN	03-JUN-1983	02-APR-1993	L/C4832	NEWCHT	02-OCT-1987	
4593	NEWCHT	20-JAN-1960	12-JUN-1981	4839	NEWCHT	27-MAR-1992	
4594	NEWCHT	02-JAN-1959	14-FEB-1992	L/C4841	NEWCHT	19-MAY-1989	
4595	NEWEDN	31-MAR-2000		4842	NEWEDN	27-OCT-2000	
4596	NEWCHT	02-JAN-1959	09-JAN-1981	4843	NEWCHT	28-JAN-1983	
4597	NEWCHT	02-JAN-1959	09-OCT-1981	L/C4844	NEWCHT	01-FEB-1985	25-MAR-1994
4615	NEWEDN	20-AUG-1999		L/C4845	NEWEDN	12-SEP-1997	
4616	NEWEDN	19-APR-1991	17-OCT-1997	L/C4846	NEWEDN	15-DEC-1995	
4617	NEWEDN	19-MAY-1989	25-APR-1997	L/C4847	NEWEDN	05-JUL-1996	
4619	NEWEDN	20-NOV-1998		4848	NEWCHT	12-JUN-1987	
L/C4622	NEWEDN	25-APR-1997		4849	NEWCHT	30-DEC-1988	
4624	NEWEDN	07-JAN-2000		L/C4850	NEWCHT	11-MAY-1990	
L/C4625	NEWEDN	10-JAN-1986	22-APR-1988	L/C4851	NEWEDN	04-APR-1997	
L/C4626	NEWEDN	08-NOV-1985	22-APR-1988	4852	NEWCHT	02-DEC-1994	
4633	NEWEDN	24-APR-1987	21-APR-1995	4853	NEWEDN	30-JUL-1999	
4634	NEWEDN	14-JUL-1995		4854	NEWCHT	25-APR-1997	
4635	NEWEDN	24-JUN-1983	28-NOV-1997	4855	NEWCHT	06-JUN-1997	
4637	NEWEDN	14-AUG-1987	19-MAY-1989	4856	NEWCHT	13-OCT-2000	
4638	NEWCHT	20-SEP-1955	12-DEC-1980	4857	NEWCHT	29-OCT-1999	
4639	NEWCHT	20-SEP-1955	12-DEC-1980	4858	NEWCHT	25-DEC-1998	
4640	NEWEDN	27-AUG-1999		4863	NEWCHT	29-JAN-1999	
4641	NEWEDN	25-DEC-1998		4865	NEWCHT	30-JAN-1998	
4642	NEWCHT	18-JAN-1960	31-MAR-1978	4885	NEWEDN	12-FEB-1988	

**SECTION 1 – Edition 07/2001  
SAFETY AND GENERAL INFORMATION**

<b>Chart Number</b>	<b>Category</b>	<b>Edition Date</b>	<b>Reprint Date</b>	<b>Chart Number</b>	<b>Category</b>	<b>Edition Date</b>	<b>Reprint Date</b>
4886	NEWCHT	26-DEC-1997		5449	NEWEDN	15-AUG-1986	
4905	NEWEDN	29-DEC-2000		5450	NEWEDN	22-MAY-1970	29-JUL-1977
L/C4906	NEWCHT	18-MAR-1988	11-JUN-1993	5451	NEWEDN	05-NOV-1965	22-MAR-1985
4909	NEWCHT	17-JUN-1988	01-MAR-1996	5452	NEWCHT	16-DEC-1954	05-FEB-1982
4911	NEWEDN	07-MAY-1993		5455	NEWEDN	15-FEB-1961	15-DEC-1978
4912	NEWEDN	04-JUN-1993		5456	NEWEDN	26-MAY-1972	12-JUN-1981
L/C4913	NEWCHT	07-AUG-1992		5457	NEWEDN	04-SEP-1998	
4920	NEWEDN	18-SEP-1998		5458	NEWEDN	08-MAR-1963	10-NOV-1978
4921	NEWEDN	06-MAR-1998		5459	NEWCHT	26-JAN-1953	06-FEB-1981
L/C4951	NEWCHT	04-JAN-1991		5464	NEWCHT	16-DEC-1954	07-MAY-1982
L/C4952	NEWCHT	21-AUG-1992		5467	NEWEDN	15-FEB-1956	29-JUN-1990
4954	NEWEDN	20-JUN-1997		5468	NEWCHT	18-MAR-1955	04-SEP-1981
4955	NEWCHT	15-FEB-1991		5469	NEWCHT	18-MAR-1955	12-NOV-1982
4956	NEWCHT	23-NOV-1990		5471	NEWEDN	12-MAY-1967	04-DEC-1981
4957	NEWCHT	13-JUL-1990		5476	NEWEDN	03-JUL-1959	15-JUN-1973
4980	NEWCHT	03-JAN-1992		5510	NEWEDN	11-JAN-1980	
L/C5001	NEWEDN	04-NOV-1994		5512	NEWCHT	18-DEC-1987	
5002	NEWCHT	25-JUL-1975		5533	NEWEDN	11-MAR-1977	
5003	NEWEDN	26-SEP-1969	23-JUL-1976	5620	NEWEDN	29-DEC-2000	
L/C5023	NEWCHT	20-APR-1990		5621	NEWEDN	26-APR-1991	
L/C5030	NEWCHT	26-OCT-1990		5622	NEWEDN	27-DEC-1991	
5031	NEWEDN	31-DEC-1999		5623	NEWEDN	08-NOV-1991	
5042	NEWCHT	24-FEB-1984		5624	NEWEDN	26-APR-1991	
5043	NEWEDN	20-AUG-1999		5625	NEWEDN	10-JUL-1992	
5044	NEWEDN	20-AUG-1999		5626	NEWCHT	08-AUG-1986	
5045	NEWCHT	01-JUL-1983		5628	NEWCHT	08-AUG-1997	
5046	NEWCHT	13-JAN-1984		5629	NEWCHT	27-OCT-2000	
5047	NEWCHT	17-AUG-1984		5640	NEWCHT	22-APR-1994	
5048	NEWEDN	07-JUL-2000		5641	NEWCHT	01-DEC-2000	
5049	NEWEDN	25-JUN-1999		5705	NEWEDN	13-MAY-1983	
5051	NEWCHT	07-JUN-1996		5706	NEWEDN	24-JUN-1983	
5052	NEWCHT	25-APR-1997		5707	NEWEDN	28-JAN-1983	
5070	NEWEDN	20-NOV-1998		5720	NEWCHT	22-APR-1994	
5080	NEWCHT	03-OCT-1997		5800	NEWEDN	19-JUL-1974	22-MAR-1991
5133	NEWCHT	10-OCT-1969	14-MAY-1982	5801	NEWEDN	24-MAY-1974	
5134	NEWCHT	11-AUG-1967	16-MAR-1973	5860	NEWEDN	30-SEP-1966	14-MAY-1976
5135	NEWCHT	11-AUG-1967	19-FEB-1988	5861	NEWEDN	30-SEP-1966	14-MAY-1976
5138	NEWEDN	17-APR-1998		6021	NEWEDN	23-MAY-1986	
5140	NEWCHT	15-NOV-1963	20-OCT-1978	6021	NEWEDN	24-SEP-1999	
5143	NEWEDN	02-MAY-1986		6022	NEWEDN	23-MAY-1986	
5179	NEWCHT	28-AUG-1964	12-JUN-1981	6022	NEWEDN	24-SEP-1999	
5300	NEWCHT	25-NOV-1966	25-NOV-1977	6023	NEWEDN	26-FEB-1988	30-JUN-1995
5316	NEWCHT	24-AUG-1961	25-JAN-1980	6026	NEWCHT	17-SEP-1976	
5335	NEWCHT	15-MAR-1985		6028	NEWCHT	15-JAN-1971	
5338	NEWCHT	06-JUN-1986		6030	NEWCHT	14-AUG-1987	
5340	NEWCHT	19-APR-1963	14-DEC-1979	6035	NEWCHT	20-NOV-1987	
5348	NEWEDN	05-NOV-1976		6036	NEWCHT	28-AUG-1987	
5349	NEWCHT	05-MAR-1958	03-MAR-1978	6037	NEWCHT	13-NOV-1987	
5351	NEWCHT	24-FEB-1956	25-MAR-1983	6038	NEWCHT	11-SEP-1987	19-SEP-1997
5352	NEWEDN	08-JUL-1960	16-MAY-1980	6050	NEWEDN	01-AUG-1986	
5365	NEWCHT	26-SEP-1969	25-AUG-1989	6100	NEWCHT	15-MAY-1987	10-APR-1992
5373	NEWCHT	15-FEB-1985		6105	NEWEDN	20-JAN-1989	
5374	NEWCHT	17-JAN-1986		6106	NEWEDN	21-JUN-1991	
5375	NEWCHT	28-FEB-1986		6107	NEWEDN	10-JUN-1983	
5376	NEWCHT	22-MAR-1985		6107	NEWEDN	29-OCT-1999	
5390	NEWCHT	17-MAY-1968	04-NOV-1988	6108	NEWEDN	28-JAN-1983	
5391	NEWCHT	17-MAY-1968	18-FEB-1983	6108	NEWEDN	10-NOV-2000	
5397	NEWCHT	04-NOV-1960	18-NOV-1983	6109	NEWEDN	30-MAR-1990	
5398	NEWEDN	04-SEP-1981		6110	NEWEDN	24-FEB-1989	15-DEC-1995
5399	NEWEDN	04-SEP-1981		6111	NEWEDN	11-MAR-1983	
5400	NEWEDN	19-DEC-1960	23-APR-1982	6112	NEWCHT	06-FEB-1970	25-MAR-1994
5403	NEWEDN	04-FEB-1987		6201	NEWEDN	16-MAR-1973	22-NOV-1991
5405	NEWCHT	26-DEC-1951	25-MAR-1988	6205	NEWCHT	30-JUN-1995	
5406	NEWCHT	06-MAR-1914	15-AUG-1980	6206	NEWEDN	02-APR-1982	
5410	NEWEDN	25-MAR-1977	19-MAR-1993	6206	NEWEDN	15-SEP-2000	
5411	NEWEDN	04-JUN-1958	30-JAN-1981	6207	NEWEDN	02-APR-1982	
5412	NEWEDN	23-FEB-1968	27-APR-1984	6207	NEWEDN	24-MAR-2000	
5414	NEWEDN	06-AUG-1937	10-OCT-1980	6209	NEWCHT	04-SEP-1970	
5440	NEWEDN	01-NOV-1974	06-FEB-1981	6211	NEWCHT	26-AUG-1988	29-OCT-1993



**SECTION 1 – Edition 07/2001  
SAFETY AND GENERAL INFORMATION**

Chart Number	Category	Edition Date	Reprint Date	Chart Number	Category	Edition Date	Reprint Date
6212	NEWEDN	12-NOV-1982	21-APR-1995	6429	NEWEDN	11-MAY-2001	
6213	NEWEDN	10-AUG-1984	28-JUL-1989	6430	NEWEDN	11-MAY-2001	
6214	NEWCHT	18-MAR-1977	07-JUL-1989	6431	NEWEDN	11-MAY-2001	
6215	NEWCHT	01-JUL-1977	08-MAY-1992	6432	NEWEDN	11-MAY-2001	
6216	NEWCHT	02-APR-1982	28-FEB-1992	6433	NEWEDN	11-MAY-2001	
6217	NEWCHT	18-JUN-1976	12-FEB-1993	6434	NEWEDN	11-MAY-2001	
6218	NEWEDN	11-MAR-1988	13-NOV-1992	6435	NEWEDN	11-MAY-2001	
6240	NEWEDN	15-DEC-1995		6436	NEWEDN	11-MAY-2001	
6241	NEWEDN	06-AUG-1957	28-MAY-1982	6437	NEWEDN	11-MAY-2001	
6242	NEWEDN	13-JUN-1980	01-MAY-1992	6438	NEWEDN	11-MAY-2001	
6243	NEWEDN	10-DEC-1971	17-NOV-1995	6441	NEWEDN	11-MAY-2001	
6247	NEWEDN	19-FEB-1993		6451	NEWEDN	11-MAY-2001	
6248	NEWCHT	04-MAY-1934	06-OC T-1995	6452	NEWEDN	11-MAY-2001	
6249	NEWEDN	29-MAR-1985		6453	NEWEDN	11-MAY-2001	
6251	NEWEDN	26-MAY-2000		6454	NEWEDN	11-MAY-2001	
6258	NEWCHT	30-DEC-1988		6455	NEWEDN	11-MAY-2001	
6259	NEWCHT	23-FEB-1990		6505	NEWCHT	05-APR-1985	28-FEB-1986
6260	NEWCHT	06-JAN-1989		6506	NEWCHT	12-APR-1985	21-FEB-1986
6263	NEWCHT	14-APR-1989		6730	NEWCHT	26-DEC-1969	16-MAR-1979
6264	NEWCHT	14-APR-1989		7000	NEWCHT	05-MAR-1982	
6267	NEWCHT	09-JUL-1965	28-AUG-1981	7010	NEWEDN	12-JAN-1979	04-MAR-1988
6268	NEWEDN	15-JUN-1962		L/C7011	NEWEDN	02-SEP-1983	
6269	NEWEDN	04-NOV-1960	11-MAR-1977	7050	NEWEDN	03-FEB-1989	
6270	NEWEDN	09-NOV-1973		7051	NEWEDN	14-DEC-1973	08-AUG-1986
6271	NEWEDN	07-SEP-1973		7052	NEWEDN	10-JUN-1966	19-JUL-1985
6272	NEWEDN	14-SEP-1973		7053	NEWEDN	10-APR-1970	08-APR-1994
6273	NEWEDN	28-SEP-1973		7065	NEWEDN	31-MAY-1963	30-DEC-1983
6274	NEWEDN	07-SEP-1973		7066	NEWEDN	21-JUN-1963	30-AUG-1985
6281	NEWEDN	29-JAN-1982		7067	NEWEDN	30-APR-1971	18-MAY-1990
6281	NEWEDN	02-JUN-2000		7071	NEWEDN	31-JUL-1964	08-SEP-1978
6285	NEWCHT	03-JUN-1988		7072	NEWEDN	30-APR-1971	25-JUL-1997
6286	NEWCHT	25-NOV-1988		7082	NEWEDN	20-MAY-1966	27-APR-1984
6287	NEWCHT	11-JUN-1982		7083	NEWEDN	15-JUN-1984	
6310	NEWEDN	04-MAY-1973	17-FEB-1978	7103	NEWEDN	05-AUG-1977	
6311	NEWCHT	17-AUG-1962		7121	NEWEDN	17-NOV-1972	06-OCT-1989
6341	NEWEDN	14-JAN-1991		7122	NEWEDN	19-OCT-1962	06-SEP-1985
6354	NEWCHT	09-NOV-1950		7125	NEWEDN	20-APR-1960	26-SEP-1980
6355	NEWEDN	09-FEB-1972		7126	NEWEDN	08-MAR-1954	13-AUG-1993
6356	NEWCHT	30-OCT-1949		7127	NEWEDN	27-MAY-1983	14-DEC-1984
6357	NEWCHT	28-FEB-1950	13-APR-1973	7134	NEWCHT	23-JUL-1993	
6358	NEWEDN	18-MAY-1949	28-JAN-1972	7135	NEWEDN	07-MAR-1958	14-DEC-1979
6359	NEWEDN	24-MAY-1968		7136	NEWCHT	23-JUL-1993	
6360	NEWCHT	17-APR-1948		7150	NEWEDN	09-JUL-1965	01-OCT-1982
6368	NEWCHT	16-JUN-1958	06-AUG-1976	7170	NEWEDN	18-APR-1975	23-DEC-1983
6369	NEWEDN	24-MAY-1985		7171	NEWEDN	15-APR-1960	08-SEP-1978
6370	NEWEDN	03-AUG-1990		7180	NEWEDN	11-AUG-1978	
6371	NEWEDN	01-MAR-1974		7181	NEWCHT	22-FEB-1963	04-MAY-1984
6390	NEWEDN	08-FEB-1980		7184	NEWCHT	10-JUL-1964	16-DEC-1977
6408	NEWEDN	11-MAY-2001		7185	NEWEDN	08-APR-1960	27-APR-1984
6409	NEWEDN	11-MAY-2001		7193	NEWCHT	10-MAY-1963	10-MAR-1978
6410	NEWEDN	11-MAY-2001		7194	NEWEDN	20-MAR-1981	
6411	NEWEDN	11-MAY-2001		7195	NEWCHT	23-JUL-1993	
6412	NEWEDN	11-MAY-2001		7212	NEWEDN	11-JAN-1985	
6413	NEWEDN	11-MAY-2001		7220	NEWEDN	02-NOV-1979	16-MAR-1984
6414	NEWEDN	11-MAY-2001		7292	NEWCHT	30-JAN-1962	27-SEP-1985
6415	NEWEDN	11-MAY-2001		7302	NEWEDN	18-AUG-1978	09-NOV-1990
6416	NEWEDN	11-MAY-2001		7304	NEWCHT	17-FEB-1978	06-SEP-1985
6417	NEWEDN	11-MAY-2001		7310	NEWCHT	11-JUL-1986	
6418	NEWEDN	11-MAY-2001		7371	NEWEDN	14-DEC-1973	27-MAR-1981
6419	NEWEDN	11-MAY-2001		7404	NEWEDN	17-MAY-1963	02-SEP-1983
6420	NEWEDN	11-MAY-2001		7405	NEWEDN	01-OCT-1982	
6421	NEWEDN	11-MAY-2001		7411	NEWEDN	13-APR-1973	29-SEP-1989
6422	NEWEDN	11-MAY-2001		7430	NEWEDN	21-MAY-1976	07-OCT-1983
6423	NEWEDN	11-MAY-2001		7465	NEWEDN	28-FEB-1957	02-AUG-1991
6424	NEWEDN	11-MAY-2001		7481	NEWCHT	21-AUG-1992	
6425	NEWEDN	11-MAY-2001		7482	NEWCHT	21-AUG-1992	
6426	NEWEDN	11-MAY-2001		7485	NEWCHT	17-MAR-1989	
6427	NEWEDN	11-MAY-2001		7486	NEWCHT	10-FEB-1989	
6428	NEWEDN	11-MAY-2001		7487	NEWCHT	10-JUL-1987	

**SECTION 1 – Edition 07/2001  
SAFETY AND GENERAL INFORMATION**

<b>Chart Number</b>	<b>Category</b>	<b>Edition Date</b>	<b>Reprint Date</b>	<b>Chart Number</b>	<b>Category</b>	<b>Edition Date</b>	<b>Reprint Date</b>
7488	NEWCHT	08-MAR-1991		7731	NEWEDN	25-MAY-1984	
7489	NEWCHT	28-AUG-1992		7733	NEWEDN	19-MAR-1971	08-FEB-1980
7502	NEWEDN	31-JUL-1998		7735	NEWEDN	14-AUG-1970	18-NOV-1983
7511	NEWEDN	29-DEC-1989		7750	NEWEDN	13-JUN-1997	
7512	NEWCHT	05-JUL-1985		7760	NEWCHT	03-MAY-1968	19-AUG-1983
7520	NEWCHT	01-JUN-1984		7770	NEWEDN	27-AUG-1971	04-JUL-1980
7521	NEWCHT	01-JUN-1984		7776	NEWEDN	30-MAY-1997	
7527	NEWEDN	12-APR-1974		7777	NEWEDN	30-MAY-1997	
7527	NEWEDN	29-DEC-2000		7778	NEWEDN	13-JUN-1997	
7540	NEWCHT	07-JAN-1983		7779	NEWEDN	13-JUN-1997	
7552	NEWEDN	27-MAR-1998		7780	NEWCHT	06-JUL-1990	
7565	NEWCHT	04-OCT-1996		7781	NEWCHT	06-JUL-1990	
7566	NEWCHT	22-JUN-1990		7782	NEWEDN	13-JUN-1997	
7568	NEWCHT	05-JUL-1985		7783	NEWEDN	13-JUN-1997	
7569	NEWCHT	05-JUL-1985		7784	NEWCHT	03-JUL-1998	
7570	NEWCHT	02-MAY-1986		7832	NEWEDN	19-FEB-1971	06-MAR-1981
7571	NEWCHT	11-APR-1986		7920	NEWEDN	27-APR-1984	23-MAY-1986
7572	NEWCHT	02-MAY-1986		7930	NEWEDN	18-MAY-1984	
7573	NEWCHT	25-FEB-2000		7935	NEWEDN	21-JUN-1985	
7575	NEWCHT	06-MAR-1992		7940	NEWEDN	27-APR-1979	20-SEP-1985
7578	NEWCHT	27-JAN-1995		7941	NEWCHT	05-JAN-1973	14-MAR-1986
7600	NEWCHT	26-JUL-1985		7950	NEWEDN	03-MAY-1985	
7608	NEWEDN	04-JUN-1976	04-MAR-1983	7951	NEWEDN	24-FEB-1984	
7620	NEWCHT	02-MAY-1997		7952	NEWEDN	17-MAR-1972	27-JUL-1984
7621	NEWCHT	02-MAY-1997		7953	NEWEDN	05-APR-1996	
7646	NEWEDN	02-FEB-1973	28-NOV-1980	7954	NEWCHT	17-MAY-1974	17-JUN-1983
7661	NEWCHT	14-MAR-1986		7980	NEWCHT	16-JAN-1987	
7662	NEWEDN	19-JUL-1991		L/C8005	NEWEDN	07-DEC-1984	02-MAY-1997
7663	NEWEDN	25-APR-1997		L/C8006	NEWEDN	05-AUG-1988	
7664	NEWCHT	28-FEB-1986		L/C8007	NEWEDN	19-AUG-1988	
7665	NEWCHT	13-JUN-1986		L/C8010	NEWEDN	01-AUG-1986	26-MAY-1989
7666	NEWCHT	28-FEB-1986		L/C8011	NEWEDN	30-DEC-1994	
7667	NEWCHT	14-MAR-1986		L/C8012	NEWEDN	04-NOV-1994	
7668	NEWCHT	18-MAY-1990		L/C8013	NEWEDN	04-NOV-1994	
7669	NEWCHT	18-MAY-1990		L/C8014	NEWEDN	18-NOV-1994	
7685	NEWCHT	28-FEB-1986		L/C8015	NEWEDN	16-DEC-1994	
7686	NEWCHT	27-MAR-1981	19-JAN-1990	L/C8046	NEWEDN	07-OCT-1983	
7687	NEWCHT	05-AUG-1983		L/C8047	NEWEDN	07-OCT-1983	06-DEC-1985
7710	NEWEDN	13-JUN-1997		L/C8048	NEWEDN	30-DEC-1994	
7725	NEWEDN	22-JUN-1984		L/C8049	NEWEDN	30-DEC-1994	

**CANADIAN HYDROGRAPHIC SERVICE - Special Announcement.**

Since May 1, 2001, the Canadian Hydrographic Service Chart Sales and Distribution office located at 1675 Russell Rd., Ottawa, Ontario, no longer offers a retail sales service.

Retail sales, including walk-in, phone, fax and e-mail orders, are now directed to our dealer network.

Please note that orders will only be sent to CHS dealers - Shipments to third parties will not be accepted.

If you require further information, please phone (613) 998-4931.

**CANADIAN HYDROGRAPHIC SERVICE PUBLICATION - New Edition of Sailing Directions.**

The Second Edition of *ATL 112 - St. Lawrence River, Cap Rouge to Montréal and Rivière Richelieu, 2001*, is now available. This booklet replaces the first edition of *ATL 112 - St. Lawrence River, Cap Rouge to Montréal, 1992*. All relevant information published in Canadian Notices to Mariners up to and including **Monthly Edition No. 2 of 2001** has been incorporated in this edition. The price of this booklet is \$9.95.

**SECTION 2 – Edition 07/2001  
CHART CORRECTIONS**

**1310 - Section A-B - New Edition - 24-MAR-2000 - NAD 1983**

13-JUL-2001 LNM/D. 15-JUN-2001  
 Amend F G 13m to read Iso G 13m against light 45°42'44.8"N 073°26'22.8"W  
 (L2001-062) LL(2330) DFO(6406316-01)

Amend F G 31m to read Iso G 31m against light 45°41'36.7"N 073°27'37.6"W  
 (L2001-063) LL(2331) DFO(6406317-01)

**1311 - Sorel a/to Varennes - New Chart - 05-NOV-1999 - NAD 1983**

06-JUL-2001 LNM/D. 15-JUN-2001  
 Reposition green light, port hand pillar buoy, QG, marked M1 from 46°02'07.0"N 073°09'48.5"W  
 to 46°02'08.7"N 073°09'50.4"W  
 (L2001-045) LL(2273) DFO(6406297-01)

Reposition red light starboard hand pillar buoy FIR, marked M2 from 46°00'32.0"N 073°10'37.0"W  
 to 46°01'17.0"N 073°10'20.5"W  
 (L2001-046) LL(2273.5) DFO(6406298-01)

Add green light port hand pillar buoy, FI G, marked M3 46°01'36.9"N 073°10'02.7"W  
 (L2001-048) LL(2273.6) DFO(6406300-01)

Delete yellow anchorage pillar light buoy, FI Y marked LANO D 46°00'59.4"N 073°10'02.7"W  
 (L2001-054) LL(2275.5) DFO(6406305-01)

Add red light, starboard hand pillar buoy FIR, marked M4 46°00'32.0"N 073°10'37.0"W  
 (L2001-058) LL(2273.7) DFO(6406312-01)

13-JUL-2001 LNM/D. 06-JUL-2001  
 Amend F G 13m 14M to read Iso G 13m 14M against light 45°42'44.8"N 073°26'22.8"W  
 (L2001-062) LL(2330) DFO(6406316-01)

Amend F G 31m 14M Iso G 2s 31m to read Iso G 31m 18M Iso G 2s 31m against light 45°41'36.7"N 073°27'37.6"W  
 (L2001-063) LL(2331) DFO(6406317-01)

**1437 - Summerland Group to/à Grindstone Island - New Chart - 19-MAR-1993 - NAD 1983**

13-JUL-2001 LNM/D. 10-NOV-2000  
 Delete green, port hand spar buoy, marked J5/1 44°19'27.0"N 076°07'42.0"W  
 (B2001-087) DFO(6601525-01)

Reposition red, starboard hand spar buoy, marked J4 from 44°19'32.5"N 076°06'56.0"W  
 to 44°19'31.0"N 076°06'44.0"W  
 (B2001-088) DFO(6601526-01)

**1438 - Grindstone Island to/à Carleton Island – New Edition - 06-OCT-1995 - NAD 1983**

13-JUL-2001 LNM/D. 08-JUN-2001  
 Delete green, port hand spar buoy, marked J5/1 44°19'27.0"N 076°07'42.0"W  
 (B2001-087) DFO(6601525-01)

Reposition red, starboard hand spar buoy, marked J4 from 44°19'32.5"N 076°06'56.0"W  
 to 44°19'31.0"N 076°06'44.0"W  
 (B2001-088) DFO(6601526-01)

**1513 - NEWBORO'TO/A CHAFFEYS LOCKS – Sheet 3 - New Edition - 07-JUN-1996 - NAD 1927**

06-JUL-2001 LNM/D. 10-NOV-2000  
 Add submarine cable joining 44°38'45.0"N 076°18'18.0"W  
 44°38'44.0"N 076°18'23.0"W  
 44°38'41.0"N 076°18'28.0"W  
 44°38'38.0"N 076°18'34.0"W

**SECTION 2 – Edition 07/2001  
CHART CORRECTIONS**

44°38'37.5"N 076°18'38.0"W  
44°38'40.0"N 076°18'37.5"W  
and 44°38'44.0"N 076°18'34.0"W  
*DFO(6601505-01)*

Add submarine cable joining 44°37'41.5"N 076°17'49.0"W  
44°37'38.0"N 076°17'50.0"W  
44°37'34.5"N 076°17'51.5"W  
and 44°37'32.0"N 076°17'53.0"W  
*DFO(6601508-01)*

**1513 - JONES FALLS TO/A RIVER STYX – Sheet 4 - New Edition - 07-JUN-1996 - NAD 1927**

06-JUL-2001 LNM/D. 10-NOV-2000  
Add submarine power cable joining 44°30'06.0"N 076°14'42.0"W  
44°30'08.0"N 076°14'39.0"W  
44°30'09.0"N 076°14'36.0"W  
and 44°30'10.0"N 076°14'33.5"W  
*DFO(6601504-01)*

**L/C2000 - Lake Ontario/Lac Ontario - New Edition - 10-APR-1998 - NAD 1983**

13-JUL-2001 LNM/D. 20-OCT-2000  
Amend "FI W 10s 22m 24M" to read "Oc 4s 18m, Priv" against light 43°22'24.0"N 078°29'18.0"W  
*DFO(6601532-01)*

**2022 - Healey Falls Locks to Peterborough/Écluses de Healey Falls a Peterboroough - New Edition - 02-AUG-1996 - NAD 1927**

13-JUL-2001 LNM/D. (207-1997)  
Amend Murray Canal 9.5 ft (2.9m) to read Murray Canal 9 ft (2.7m) inside cover under title "GENERAL INFORMATION / RENSEIGNEMENT GÉNÉRAUX", under section "TRENT-SEVERN WATERWAY DEPTHS / PROFONDEURS DE LA VOIE NAVIGABLE TRENT-SEVERN", line 1  
*(C96-045) DFO(6601524-01)*

**2023 - Peterborough to/à Buckhorn including/y compris Stony Lake - New Edition - 01-MAR-1985 - NAD 1927**

13-JUL-2001 LNM/D. (103-1997)  
Amend Murray Canal (5 miles) 9½ft to read Murray Canal (5 miles) 9 ft inside cover under title "GENERAL INFORMATION / RENSEIGNEMENT GÉNÉRAL", section "Draught/Tirant d'eau", line 11  
*(C96-045) DFO(6601524-02)*

**2024 - Buckhorn to/à Bobcaygeon including/y compris Chemong Lake - New Edition - 29-MAR-1985 - NAD 1927**

13-JUL-2001 LNM/D. 20-APR-2001  
Amend Murray Canal (5 miles) 9½ft to read Murray Canal (5 miles) 9 ft inside cover under title "GENERAL INFORMATION / RENSEIGNEMENT GÉNÉRAL", section "Draught/Tirant d'eau", line 11  
*(C96-045) DFO(6601524-02)*

**2025 - Bobcaygeon to/au Lake Simcoe - New Edition - 01-MAR-1985 - NAD 1927**

13-JUL-2001 LNM/D. (166-1999)  
Amend Murray Canal (5 miles) 9½ft to read Murray Canal (5 miles) 9 ft inside cover under title "GENERAL INFORMATION / RENSEIGNEMENT GÉNÉRAL", section "Draught/Tirant d'eau", line 11  
*(C96-045) DFO(6601524-02)*

**SECTION 2 – Edition 07/2001  
CHART CORRECTIONS**

**2026 - Lake Scugog and/et Scugog River - New Edition - 05-APR-1985 - NAD 1927**

13-JUL-2001  
Amend Murray Canal (5 miles) 9½ft to read Murray Canal (5 miles) 9 ft  
LNMD. (529-1999)  
inside cover under title "GENERAL INFORMATION / RENSEIGNEMENT GÉNÉRAL", section "Draught/Tirant d'eau", line 1  
(C96-045) DFO(6601524-02)

**2026 - Scugog River - Sheet 1 - New Edition - 05-APR-1985 - NAD 1927**

13-JUL-2001  
Add submarine cable  
LNMD. (529-1999)  
joining 44°12'06.0"N 078°47'19.0"W  
44°13'07.0"N 078°46'32.0"W  
44°13'15.5"N 078°46'06.0"W  
and 44°13'13.0"N 078°46'02.0"W  
DFO(6601522-02)

**2026 - Lake Scugog - Sheet 2 - New Edition - 05-APR-1985 - NAD 1927**

13-JUL-2001  
Add submarine cable  
LNMD. (529-1999)  
joining 44°09'38.5"N 078°50'00.0"W  
44°09'40.0"N 078°50'00.0"W  
44°11'18.0"N 078°47'53.0"W  
44°13'07.0"N 078°46'32.0"W  
44°13'15.5"N 078°46'06.0"W  
and 44°13'13.0"N 078°46'02.0"W  
DFO(6601522-01)

**2028 - Lakes Simcoe and Couchiching including the Holland River/Lacs Simcoe et Couchiching y compris la Holland river - New Edition - 05-JUN-1998 - NAD 1927**

13-JUL-2001  
Amend Murray Canal 9.5 ft (2.9m) to read Murray Canal 9 ft (2.7m)  
LNMD. (549-1990)  
inside cover under title "GENERAL INFORMATION / RENSEIGNEMENT GÉNÉRAUX", under section "TRENT-SEVERN WATERWAY DEPTHS / PROFONDEURS DE LA VOIE NAVIGABLE TRENT-SEVERN", line 1  
(C96-045) DFO(6601524-01)

**2029 - Couchiching Lock to Port Severn/Écluse de Couchiching a Port Severn - New Edition - 20-MAR-1987 - NAD 1927**

13-JUL-2001  
Amend Murray Canal (5 miles) 9½ft to read Murray Canal (5 miles) 9 ft  
LNMD. (1111-1998)  
inside cover under title "GENERAL INFORMATION / RENSEIGNEMENT GÉNÉRAL", section "Draught/Tirant d'eau", line 1  
(C96-045) DFO(6601524-02)

**2042 - D-E - New Edition - 07-OCT-1994 - NAD 1983**

13-JUL-2001  
Amend "F Y" to read "F R" against front range light  
LNMD. 25-MAY-2001  
42°52'40.9"N 079°14'52.3"W  
(B2001-093) LL(560.6) DFO(6601537-01)

Amend "F Y" to read "F R" against rear range light  
42°52'55.7"N 079°14'46.8"W  
(B2001-094) LL(560.7) DFO(6601538-01)

20-JUL-2001  
Amend F Y to read FI Y against light  
LNMD. 13-JUL-2001  
42°52'40.0"N 079°14'52.5"W  
(B2001-095) LL(560.5) DFO(6601539-01)

**SECTION 2 – Edition 07/2001  
CHART CORRECTIONS**

**2043 - Lower Niagara River and Approaches - New Chart - 29-NOV-1968 - NAD 1927**

13-JUL-2001  
Add light, Q W Priv LNM/D. 27-APR-2001  
43°10'23.8"N 079°03'00.8"W  
DFO(6601532-02)

**2064 - Kingston to/à False Ducks Islands - New Edition - 05-MAR-1999 - NAD 1983**

13-JUL-2001 LNM/D. 29-DEC-2000  
Amend "KV2" to "KV" against east cardinal buoy 44°13'25.0"N 076°37'39.0"W  
(NM1925/99) DFO(6601540-01)

Amend "R" to read "BYB" against east cardinal buoy 44°13'25.0"N 076°37'39.0"W  
(NM1925/99) DFO(6601540-02)

**L/C2077 - Lake Ontario/Lac Ontario, (Western Portion/Partie ouest) - New Edition - 25-AUG-1995 - NAD 1983**

06-JUL-2001  
CANCELS Range lights 43°37'46.2"N 079°24'09.7"W  
With this notification, Notice 739(P)/95 is cancelled. DFO(6012919-01)

**2085 - Toronto Harbour - New Edition - 18-FEB-2000 - NAD 1983**

06-JUL-2001 LNM/D. 23-MAR-2001  
CANCELS Range lights 43°37'46.2"N 079°24'09.7"W  
With this notification, Notice 739(P)/95 is cancelled. DFO(6012919-01)

13-JUL-2001 LNM/D. 23-MAR-2001  
Reposition green light, port hand pillar buoy FIG, marked TT3 from 43°37'40.2"N 079°24'28.8"W  
to 43°37'34.8"N 079°24'40.9"W  
(B2001-092) LL(515) DFO(6601535-01)

**2086 - Toronto to/à Hamilton - New Chart - 09-JUN-1989 - NAD 1983**

06-JUL-2001 LNM/D. 23-MAR-2001  
CANCELS Range lights 43°37'46.2"N 079°24'09.7"W  
With this notification, Notice 739(P)/95 is cancelled. DFO(6012919-01)

**L/C2120 - Niagara River to/a Long Point - New Edition - 06-NOV-1998 - NAD 1983**

13-JUL-2001 LNM/D. 01-JUN-2001  
Amend "F Y 11m" to read "F R 11m" against front range light 42°52'40.9"N 079°14'52.3"W  
(B2001-093) LL(560.6) DFO(6601537-01)

Amend "F Y 17m" to read "F R 17m" against rear range light 42°52'55.7"N 079°14'46.8"W  
(B2001-094) LL(560.7) DFO(6601538-01)

**L/C2201 - Georgian Bay / Baie Georgienne - New Edition - 18-NOV-1998 - NAD 1983**

27-JUL-2001 LNM/D. 09-MAR-2001  
Amend On certain copies  
Fl 4s 49ft 6M to read Fl 4s 52ft 6M against light 44°57'03.0"N 081°25'07.0"W  
DFO(6500424-01)

Add note In large white block beside Title block

Thornbury Inset is now on Chart 2283  
La cartouche Thornbury est maintenant sur la carte 2283

DFO(6500425-01)

**SECTION 2 – Edition 07/2001  
CHART CORRECTIONS**

**L/C2201 - THORNBURY - New Edition - 18-NOV-1998 - NAD 1983**

27-JUL-2001 LNM/D. 09-MAR-2001  
Add note 44°34'12.0"N 080°27'00.0"W

Thornbury Inset is now on Chart 2283  
La cartouche Thornbury est maintenant sur la carte 2283

*DFO(6500425-01)*

**2241 - Port Severn to/à Christian Island - Sheet 1 - New Chart - 30-JUL-1999 - NAD 1983**

06-JUL-2001 LNM/D. 04-MAY-2001  
Delete submarine cable between 44°45'42.0"N 079°46'24.0"W  
and 44°46'03.5"N 079°47'00.0"W  
*DFO(6601516-01)*

Add submarine cable between 44°45'43.0"N 079°46'19.0"W  
and 44°46'04.5"N 079°47'01.0"W  
*DFO(6601516-02)*

**L/C4001 - Gulf of Maine to Strait of Belle Isle /au Detroit de Belle Isle - New Edition - 01-DEC-1995 - NAD 1983**

27-JUL-2001 LNM/D. 25-MAY-2001  
Reposition yellow ODAS/SADO light buoy, marked 44005 from 42°53'54.0"N 068°56'36.0"W  
to 43°10'18.0"N 069°12'58.0"W  
*DFO(6829552-01)*

**4003 - Cape Breton to/à Cape Cod - New Edition - 14-DEC-1984 - NAD 1927**

20-JUL-2001 LNM/D. 30-MAR-2001  
Delete legend WHIS against red and white fairway pillar, light buoy Mo (A) 44°13'35.7"N 066°50'14.4"W  
*(F2000-144) LL(251.8) DFO(6828889-01)*

27-JUL-2001 LNM/D. 20-JUL-2001  
Reposition yellow ODAS/SADO light buoy, Fl (4) Y, marked 44005 from 42°53'54.0"N 068°56'36.0"W  
to 43°10'18.0"N 069°12'58.0"W  
*DFO(6829552-01)*

**L/C4006 - Newfoundland/Terre-Neuve to/à Bermuda - New Edition - 14-DEC-1984 - NAD 1927**

27-JUL-2001 LNM/D. 04-AUG-2000  
Reposition yellow ODAS/SADO light buoy, marked 44005 from 42°53'54.0"N 068°56'36.0"W  
to 43°10'18.0"N 069°12'58.0"W  
*DFO(6829552-01)*

**4011 - Approaches to/Approches à Bay of Fundy - New Edition - 31-OCT-1997 - NAD 1983**

20-JUL-2001 LNM/D. 20-APR-2001  
Delete legend WHIS against red and white fairway pillar, light buoy Mo (A) 44°13'36.0"N 066°50'12.0"W  
*(F2000-144) LL(251.8) DFO(6828889-01)*

**L/C4023 - Northumberland Strait - New Edition - 28-NOV-1986 - NAD 1927**

06-JUL-2001 LNM/D. 22-JUN-2001  
Delete fog signal 46°28'06.7"N 062°04'07.6"W  
*(G2000-031) LL(1039) DFO(6828845-01)*

20-JUL-2001 LNM/D. 06-JUL-2001  
Delete red and white fairway pillar, light buoy Mo (A), marked DH 46°27'30.0"N 064°08'52.0"W  
*(G2000-020) LL(1027.4) DFO(6828763-01)*

**4114 - Campobello Island - New Chart - 08-MAY-1992 - NAD 1983**

27-JUL-2001 LNM/D. 24-MAR-2000  
Add red, starboard hand conical buoy, marked 6A 44°51'16.5"N 066°58'33.8"W  
*DFO(6829551-01)*

**SECTION 2 – Edition 07/2001  
CHART CORRECTIONS**

**L/C4116 - Approaches to / Approches à Saint John - New Chart - 09-APR-1993 - NAD 1983**

20-JUL-2001		LNMD. (930-1999)
Delete	red, starboard hand conical buoy, marked KE10	45°06'03.0"N 066°34'30.0"W (F2001-027) DFO(6829518-01)
Delete	red, starboard hand spar buoy, marked KE12	45°06'28.0"N 066°34'34.0"W (F2001-028) DFO(6829519-01)
27-JUL-2001		LNMD. 20-JUL-2001
Add	obstruction with legend Obstrn PA, Rep (1997)	45°10'30.0"N 066°05'36.0"W DFO(6829561-01)

**L/C4118 - East Sandy Cove - New Edition - 13-NOV-1998 - NAD 1983**

06-JUL-2001		
Amend	FR to read FI R	44°29'10.8"N 066°05'04.3"W (F2000-193) LL(230.2) DFO(6829229-01)

**4141 - Saint John to/à Grand Bay including/ y compris Kennebecasis River - Sheet 1 - New Edition - 01-NOV-1996 - NAD 1983**

13-JUL-2001		LNMD. (1500-1999)
Delete	red, starboard hand conical buoy, marked JN2	45°19'49.3"N 066°09'03.9"W (F2000-156) DFO(6829041-01)
Add	red, starboard hand spar buoy, marked JN2	45°19'45.5"N 066°09'09.0"W (F2000-156) DFO(6829041-02)
Amend	JN4 to read JN6 against starboard spar buoy	45°20'22.3"N 066°07'23.7"W (F2000-157) DFO(6829042-01)
Add	red, starboard hand spar buoy, marked JN4	45°19'53.0"N 066°08'57.0"W (F2000-158) DFO(6829043-01)

**4236 - Taylors Head to/à Shut-in Island - New Chart - 30-JAN-1987 - NAD 1983**

06-JUL-2001		LNMD. (921-1999)
Reposition	red light, starboard hand pillar buoy FIR, marked YT8	from 44°42'30.0"N 063°00'32.0"W to 44°42'31.3"N 063°00'36.8"W (F2001-029) LL(576) DFO(6829520-01)

**L/C4240 - Liverpool Harbour to/à Lockeport Harbour - New Chart - 06-OCT-1989 - NAD 1983**

20-JUL-2001		LNMD. 02-FEB-2001
Add	red and white fairway pillar light buoy Mo (A), BELL, marked KP	43°40'14.6"N 065°09'33.0"W (F2000-211) LL(368) DFO(6829294-01)
Delete	green light, port hand pillar buoy FIG, marked KP51	43°41'59.5"N 065°09'35.0"W (F2000-212) LL(367.5) DFO(6829345-01)

**L/C4241 - Lockeport to/à Cape Sable - New Chart - 01-DEC-1989 - NAD 1983**

20-JUL-2001		LNMD. 23-FEB-2001
Add	red and white fairway pillar light buoy Mo (A), BELL, marked KP	43°40'14.6"N 065°09'33.0"W (F2000-211) LL(368) DFO(6829294-01)
Delete	green light, port hand pillar buoy FIG, marked KP51	43°41'59.5"N 065°09'35.0"W (F2000-212) LL(367.5) DFO(6829345-01)



**SECTION 2 – Edition 07/2001  
CHART CORRECTIONS**

**4245 - Yarmouth Harbour and Approaches/et les Approches - New Edition - 19-NOV-1999 - NAD 1983**

20-JUL-2001

LNM/D. 25-AUG-2000

Reposition green, port hand can buoy, marked Y19 from 43°48'57.0"N 066°08'30.6"W  
to 43°49'00.2"N 066°08'29.5"W  
(F2000-190) DFO(6829191-01)

**4308 - St.Peters Bay to Strait of Canso - New Edition - 07-SEP-1984 - NAD 1927**

20-JUL-2001

LNM/D. 06-OCT-2000

Delete light FR 45°31'03.5"N 060°57'07.8"W  
(G2000-059) LL(721.000) DFO(6829241-01)

Delete breakwater joining 45°31'02.0"N 060°57'05.0"W  
45°31'02.5"N 060°57'06.5"W  
and 45°31'03.5"N 060°57'07.8"W  
DFO(6829241-02)

Add breakwater joining 45°31'02.5"N 060°57'03.0"W  
45°31'03.3"N 060°57'04.3"W  
and 45°31'04.3"N 060°57'05.4"W  
DFO(6829241-03)

Add light Fl G 45°31'04.2"N 060°57'05.3"W  
(G2000-059) LL(721.000) DFO(6829241-04)

**4340 - Grand Manan - New Edition - 12-APR-1991 - NAD 1927**

20-JUL-2001

LNM/D. 09-MAR-2001

Add radar reflector 44°34'47.0"N 066°44'54.0"W  
(F2000-140) DFO(6828768-01)

**4376 - Louisbourg Harbour - New Edition - 02-OCT-1987 - NAD 1927**

20-JUL-2001

LNM/D. (472-1991)

Delete red, starboard hand spar buoy, marked JT16 45°55'03.7"N 059°58'12.7"W  
(G2000-061) DFO(6829242-01)

Add yellow and black, South cardinal spar buoy, marked JTK 45°55'04.0"N 059°58'12.5"W  
(G2000-061) DFO(6829242-02)

Delete red, starboard hand spar buoy, marked JT20 45°55'05.6"N 059°58'18.2"W  
(G2000-062) DFO(6829243-01)

Add yellow cautionary spar buoy, marked JTL 45°55'05.5"N 059°58'18.5"W  
(G2000-062) DFO(6829243-02)

**4394 - LaHave River, West Ironbound Island to/à Riverport - New Edition - 14-SEP-1990 - NAD 1927**

13-JUL-2001

LNM/D. (955-1998)

Delete red light, starboard hand pillar buoy, FIR, marked T66 44°17'36.5"N 064°20'46.8"W  
(F2000-213) LL(431.1) DFO(6829346-01)

Delete red, starboard hand spar buoy, marked TC56 44°17'37.4"N 064°20'21.1"W  
(F2000-214) DFO(6829347-01)

Delete green, port hand spar buoy, marked T69 44°17'41.4"N 064°21'27.8"W  
(F2000-215) DFO(6829348-01)

**4395 - LaHave River, Riverport to/à Conquerall Bank - New Edition - 25-MAY-1990 - NAD 1927**

13-JUL-2001

LNM/D. (955-1998)

Delete red light, starboard hand pillar buoy, FIR, marked T66 44°17'35.9"N 064°20'46.5"W  
(F2000-213) LL(431.1) DFO(6829346-01)

**SECTION 2 – Edition 07/2001  
CHART CORRECTIONS**

Delete red, starboard hand spar buoy, marked TC56 44°17'37.0"N 064°20'20.5"W  
(F2000-214) DFO(6829347-01)

Delete green, port hand spar buoy, marked T69 44°17'41.0"N 064°21'27.5"W  
(F2000-215) DFO(6829348-01)

**4395 - Lahave - New Edition - 25-MAY-1990 - NAD 1927**

13-JUL-2001 LNM/D. (955-1998)  
Delete green port hand spar buoy marked T69 080°, 40 feet from easternmost corner  
of the Lee Point ruined wharf.  
(F2000-215) DFO(6829348-01)

**4396 - Annapolis Basin - New Edition - 19-FEB-1988 - NAD 1927**

06-JUL-2001 LNM/D. (1710-1998)  
Delete light 44°37'00.6"N 065°41'07.7"W  
(F2001-017) LL(208) DFO(6829466-01)

Add fixed point, with legend "Lt Ho/Phare", "Aband" 44°37'00.6"N 065°41'07.7"W  
DFO(6829466-02)

**4437 - Pictou Harbour - New Edition - 17-MAY-1991 - NAD 1927**

13-JUL-2001 LNM/D. (1937-1999)  
Delete red, starboard hand conical buoy, marked SJ6 45°41'27.0"N 062°39'33.0"W  
(G2000-015) DFO(6828757-01)

Add red light, starboard hand pillar buoy QR, marked SJ6 45°41'27.0"N 062°39'33.0"W  
(G2000-015) LL(901.600) DFO(6828757-02)

Delete red, starboard hand conical buoy, marked SJ10 45°41'21.1"N 062°40'10.1"W  
(G2000-016) DFO(6828758-01)

Delete light 45°40'26.6"N 062°42'14.8"W  
(G2000-050) LL(906.5) DFO(6829193-01)

**4437 - Pictou - New Edition - 17-MAY-1991 - NAD 1927**

13-JUL-2001 LNM/D. (1937-1999)  
Delete light 45°40'26.6"N 062°42'14.6"W  
(G2000-050) LL(906.5) DFO(6829193-01)

**4443 - East River of Pictou, Indian Cross Point to Trenton and New Glasgow - New Chart - 16-JUN-1967 - NAD 1927**

06-JUL-2001 LNM/D. (429-1995)  
Delete red, starboard hand conical buoy, marked SJ48 45°36'44.1"N 062°38'45.0"W  
(G2000-034) DFO(6828847-01)

Add red, starboard hand spar buoy, marked SJ48 45°36'43.8"N 062°38'43.3"W  
(G2000-034) DFO(6828847-02)

**L/C4464 - Chéticamp to Cape St. Lawrence - New Edition - 11-OCT-1985 - NAD 1927**

27-JUL-2001 LNM/D. (1933-1999)  
Amend F G to read Fl G against light 46°50'00.5"N 060°47'50.8"W  
(G2000-057) LL(860.6) DFO(6829223-01)

**4497 - Amet Sound - New Edition - 30-JUL-1971 - NAD 1927**

13-JUL-2001 LNM/D. 20-APR-2001  
Delete green, port hand can buoy 45°45'08.8"N 063°10'12.0"W  
(G2000-018) DFO(6828760-01)

Delete red, starboard hand conical buoy 45°45'15.5"N 063°10'17.5"W  
(G2000-019) DFO(6828761-01)

**SECTION 2 – Edition 07/2001  
CHART CORRECTIONS**

**4498 - Pugwash Harbour - New Edition - 23-OCT-1987 - NAD 1927**

06-JUL-2001 LNM/D. (1901-1999)  
 CANCELS yellow cautionary buoy 45°50'51.8"N 063°39'53.7"W

With this notification, Notice 2319(T)/99 is now cancelled. See  
 reference DFO (6829297) appearing in this edition. (G2000-069) DFO(6302156-01)

Add yellow cautionary can buoy, marked STY1 45°50'51.8"N 063°39'53.7"W  
 (G2000-069) DFO(6829297-01)

**4595 - Bay of Exploits - Sheet 1 (North) - New Edition - 31-MAR-2000 - Unknown**

27-JUL-2001 LNM/D. 17-NOV-2000  
 Add red starboard hand spar light buoy, FIR, marked DBE2 49°27'58.0"N 055°01'15.2"W  
 (N1999-061) LL(347.400) DFO(6829538-01)

Add green port hand spar light buoy, FIG, marked DBE3 49°28'50.7"N 055°00'51.0"W  
 (N1999-063) LL(347.300) DFO(6829540-01)

Add green port hand spar light buoy QG, marked DBE1 49°29'14.2"N 055°00'51.0"W  
 (N1999-062) LL(347.200) DFO(6829542-01)

**4905 - Cape Tormentine à/to West Point - New Edition - 29-DEC-2000 - NAD 1983**

20-JUL-2001  
 Add red light, starboard hand spar buoy FIR, marked DH2 46°27'08.8"N 064°07'44.0"W  
 (G2000-060) LL(1023.100) DFO(6829523-01)

**4911 - Entrée à/ Entrance to Miramichi River - New Edition - 07-MAY-1993 - NAD 1983**

27-JUL-2001 LNM/D. 12-JAN-2001  
 Add depth of 2.2 metres 47°06'39.9"N 064°58'16.8"W  
 DFO(6829559-01)

**6021 - Lake Muskoka - Sheet 1 - New Edition - 24-SEP-1999 - NAD 1983**

06-JUL-2001 LNM/D. 13-OCT-2000  
 Add submarine cable joining 45°03'10.0"N 079°28'58.0"W  
 45°03'10.0"N 079°28'52.0"W  
 45°03'08.0"N 079°28'50.0"W  
 and 45°03'04.0"N 079°28'48.0"W  
 DFO(6601502-01)

Add submarine power cable joining 45°03'15.0"N 079°29'16.0"W  
 45°03'16.0"N 079°29'09.0"W  
 45°03'15.0"N 079°29'02.0"W  
 and 45°03'10.0"N 079°28'58.0"W  
 DFO(6601503-01)

Delete overhead cable with vertical clearance of 25 feet between 45°01'04.5"N 079°27'20.0"W  
 and 45°01'02.5"N 079°27'23.5"W  
 DFO(6601514-01)

Add submarine cable between 45°01'04.5"N 079°27'20.9"W  
 and 45°01'03.3"N 079°27'22.5"W  
 DFO(6601514-02)

Add submarine cable between 45°01'47.5"N 079°18'55.5"W  
 and 45°01'46.0"N 079°18'54.0"W

The position of this cable is approximate. DFO(6601514-03)

**SECTION 2 – Edition 07/2001  
CHART CORRECTIONS**

Add submarine cable between 45°01'39.0"N 079°19'41.0"W  
and 45°01'37.0"N 079°19'40.5"W  
The position of this cable is approximate.  
*DFO(6601514-04)*

Add submarine cable between 45°01'17.0"N 079°21'13.5"W  
and 45°01'15.5"N 079°21'16.0"W  
The position of this cable is approximate.  
*DFO(6601514-05)*

Add overhead cable with vertical clearance of 35 ft. between 45°04'14.0"N 079°28'58.0"W  
and 45°04'13.0"N 079°28'54.5"W  
*DFO(6601515-04)*

Delete overhead cable with vertical clearance of 30 ft. between 45°04'13.0"N 079°29'01.0"W  
and 45°04'11.0"N 079°28'53.0"W  
*DFO(6601515-05)*

Amend vertical clearance of 6 ft to read 11 ft 45°04'12.5"N 079°28'50.0"W  
Tondern Island bridge now has a greater clearance.  
*DFO(6601515-06)*

**6021 - Lake Muskoka - Sheet 2 - New Edition - 24-SEP-1999 - NAD 1983**

06-JUL-2001

LNM/D. 13-OCT-2000

Add submarine cable joining 45°03'10.0"N 079°28'58.0"W  
45°03'10.0"N 079°28'52.0"W  
45°03'08.0"N 079°28'50.0"W  
and 45°03'04.0"N 079°28'48.0"W  
*DFO(6601502-01)*

Add submarine power cable joining 45°03'15.0"N 079°29'16.0"W  
45°03'16.0"N 079°29'09.0"W  
45°03'15.0"N 079°29'02.0"W  
and 45°03'10.0"N 079°28'58.0"W  
*DFO(6601503-01)*

Delete overhead cable with vertical clearance of 25 feet between 45°01'04.5"N 079°27'20.0"W  
and 45°01'02.5"N 079°27'23.5"W  
*DFO(6601514-01)*

Add submarine cable between 45°01'04.5"N 079°27'20.9"W  
and 45°01'03.3"N 079°27'22.5"W  
*DFO(6601514-02)*

Add radio tower with R Lts with elevation of 249 feet 45°00'57.6"N 079°36'47.8"W  
The position of this tower is approximate.  
*DFO(6601515-01)*

Add water tower with elevation 161 feet. 45°00'31.9"N 079°37'04.7"W  
The position of this tower is approximate.  
*DFO(6601515-02)*

Add radio tower with R Lts with elevation of 312 feet 44°59'28.7"N 079°34'33.2"W  
The position of this tower is approximate.  
*DFO(6601515-03)*

**SECTION 2 – Edition 07/2001  
CHART CORRECTIONS**

Add	overhead cable with vertical clearance of 35 ft.	between 45°04'14.0"N 079°28'58.0"W and 45°04'13.0"N 079°28'54.5"W <i>DFO(6601515-04)</i>
Delete	overhead cable with vertical clearance of 30 ft.	between 45°04'13.0"N 079°29'01.0"W and 45°04'11.0"N 079°28'53.0"W <i>DFO(6601515-05)</i>
Amend	vertical clearance of 6 ft to read 11 ft Tondern Island bridge now has a greater clearance.	45°04'12.5"N 079°28'50.0"W  <i>DFO(6601515-06)</i>
Add	causeway	between 45°01'47.5"N 079°34'31.2"W and 45°01'47.5"N 079°34'30.5"W <i>DFO(6601515-07)</i>
Add	submarine power cable  The position of this cable is approximate.	between 45°01'43.0"N 079°34'34.2"W and 45°01'45.3"N 079°34'32.9"W  <i>DFO(6601515-08)</i>
Delete	private beacon and text	44°58'48.0"N 079°26'50.0"W <i>DFO(6601515-09)</i>
Delete	footbridge with clearance 3 feet	between 45°00'26.0"N 079°36'45.0"W and 45°00'27.0"N 079°36'47.0"W <i>DFO(6601515-10)</i>
Delete	overhead cable with vertical clearance of 36 ft	between 45°03'48.0"N 079°31'13.5"W and 45°03'46.3"N 079°31'09.0"W <i>DFO(6601515-11)</i>
Add	submarine power cable	between 45°03'47.5"N 079°31'12.0"W and 45°03'47.0"N 079°31'10.0"W <i>DFO(6601515-12)</i>
Add	submarine cable  The position of this cable is approximate.	between 45°03'45.0"N 079°31'04.8"W and 45°03'46.8"N 079°31'08.1"W  <i>DFO(6601515-13)</i>

**6022 - Lake Rosseau and /et Lake Joseph - Sheet 1 - New Edition - 24-SEP-1999 - NAD 1983**

13-JUL-2001		LNM/D. 27-OCT-2000
Add	submarine power cable  Position approximate	between 45°13'17.0"N 079°33'30.3"W and 45°13'09.0"N 079°33'26.5"W  <i>DFO(6601518-01)</i>
Amend	vertical clearance of 1.5 ft to read 5 ft	45°07'39.0"N 079°33'55.0"W <i>DFO(6601518-02)</i>
Add	water tower Position approximate	45°06'46.2"N 079°35'08.1"W  <i>DFO(6601518-03)</i>
Add	radio tower, R Lts, 155 m Position approximate	45°14'39.8"N 079°35'35.4"W  <i>DFO(6601518-04)</i>

**SECTION 2 – Edition 07/2001  
CHART CORRECTIONS**

Add radio tower, R Lts, 126 m 45°10'59.3"N 079°31'23.0"W  
Position approximate  
*DFO(6601518-05)*

Amend vertical clearance of 9 ft to read 12 ft 45°07'12.3"N 079°34'38.2"W  
*DFO(6601518-06)*

**6214 - Sabaskong Bay - New Chart - 18-MAR-1977 - NAD 1927**

13-JUL-2001 LNM/D. 06-APR-2001  
Delete submarine power cable between 49°07'20.0"N 093°56'08.0"W  
and 49°07'21.0"N 093°55'56.5"W  
*DFO(6500421-01)*

Add submarine power cable between 49°07'16.0"N 093°56'07.0"W  
and 49°07'21.0"N 093°55'56.5"W  
*DFO(6500421-02)*

**SECTION 4 - Edition 07/2001**  
**SAILING DIRECTIONS AND SMALL CRAFT GUIDE CORRECTIONS**

Labrador and Hudson Bay, Sixth Edition, 1988 —

Page 136 — Paragraph 58, line 4 – after “navigable.”

Add: On the east shore of Indian Island, there is a **wharf** 72 feet (22 m) long with a depth of 7 feet (2.2 m) alongside. A large white building stands adjacent to the inner end of the wharf.

(N2001-020.3)

Page 143 — Paragraph 114, last line

Add: At **Murray Harbour**, 0.8 mile WNW of Seal Bight, there is a small community wharf with a pier extending 39 feet (12 m) to a depth of 7 feet (2.2 m) alongside a 20 foot (6 m) wide outer end. A large white building stands behind the wharf.

(N2001-020.4)

Page 167 — Paragraph 77, line 7 – after “necessary.”

Add: At Seal Island Harbour, there is a small wharf with a pier extending 36 feet (11 m) to a depth of 12 feet (3.6 m) alongside a 20 foot (6 m) wide outer end. A white building stands at the inner end of the wharf.

(N2001-020.5)

Page 172 — Paragraph 151, lines 3 and 4

Delete: “There ... wharves.”

Replace by: At the NW end of Batteau Harbour, there is a small community wharf with a pier extending 39 feet (12 m) to a depth of 10 feet (3 m) alongside a 20 foot (6 m) wide outer end. A large building stands alongside the inner end of the wharf.

(N2001-020.6)

Page 194 — Paragraph 451, lines 1 to 5

Delete: “A private ... (1.5 m).”

Replace by: There is a wharf extending 135 feet (41 m) from the shore to a depth of 7 feet (2.1 m) alongside a 21 foot (6.5 m) wide outer end which is in ruins.

(N2001-020.7)

Page 444 — INDEX, after “Murray Harbour .....358”

Insert: Murray Harbour (Labrador) .....143

(N2001-020.8)

Gulf of St. Lawrence, First Edition, 1992 —

Page 41 — After paragraph 44

Add: 44.1 A **submarine cable** is landed in **Cape Ray Cove**, about 1.3 miles NE of Cape Ray. Mariners are cautioned not to anchor in the vicinity of this cable, which extends SW from the cove.

(N2001-020.0)

**SECTION 4 - Edition 07/2001**  
**SAILING DIRECTIONS AND SMALL CRAFT GUIDE CORRECTIONS**

Page 99 — After paragraph 347

Add: 347.1 A **submarine cable** is landed near the southside of the bridge at the mouth of the Grand Codroy River. Mariners are cautioned not to anchor in the vicinity of this cable which extends SW from the bridge.

(N2001-020.1)

Page 189 — INDEX, after “Cape Ray .....41, 99”

Insert: Cape Ray Cove ..... 41

(N2001-020.2)

ATL 101 — Newfoundland — Northeast and East Coasts, First Edition, 1997 —

Page 5 — Paragraph 43, lines 1 and 2

Delete: “The Grenfell ... removed.”

Replace by: At the site of the former Grenfell wharf, there is a floating wharf 49 feet (15 m) long and 9 feet (2.7 m) wide and a 12 foot (3.6 m) wide boat ramp.

(N2001-018.8)

Page 5 — After paragraph 44

Add: <sup>44.1</sup> Close east of the Public wharf, Penney’s wharf extends 69 feet (21 m) from the shore with depths of 9 to 10 feet (2.6 to 3.1 m) alongside a 98 foot (30 m) long outer end. Fresh water and electricity are available.

(N2001-018.9)

Page 11 — Paragraph 119, lines 8 and 9

Delete: “. Ballast ... corner.”

Replace by: and is in ruins. Ballast rock, drying 1 foot (0.3 m), lies off its outer end.

(N2001-019.0)

Page 12 — Paragraph 135, last line

Add: Adjacent to the east side of the haulout, there is a 102 foot (31 m) long marginal wharf with depths of 5 to 9 feet (1.6 to 2.7 m) alongside. A 26 foot (8 m) long pier with a depth of 8 feet (2.4 m) alongside its west face is located at the east end of the marginal wharf; the east side of the pier is foul.

(N2001-019.1)

Page 12 — Paragraph 138, last line

Add: Fresh water is available at the Public wharf.

(N2001-019.2)

Page 13 — Paragraph 139, line 3 – after “wharf”

Insert: and is in ruins

(N2001-019.3)



**SECTION 4 - Edition 07/2001**  
**SAILING DIRECTIONS AND SMALL CRAFT GUIDE CORRECTIONS**

Page 13 — Paragraph 140, lines 1 to 10

Delete: “A 187-foot ... alongside.”

Replace by: A 384 foot (117 m) long marginal wharf with depths of 4 to 13 feet (1.1 to 3.9 m) alongside is located close north of the bridge on the west shore of Grevigneux Harbour. Another marginal wharf extends 200 feet (61 m) north of the previous wharf. The south 92 foot (28 m) section of this wharf has depths of 9 to 10 feet (2.6 to 3.2 m) alongside. The northern 108 foot (33 m) section is in ruins. A fish plant is located adjacent to the wharf.

(N2001-019.4)

Page 14 — Paragraph 153, lines 4 to 7

Delete: “A group ... day.”

(N2001-019.5)

Page 47 — After paragraph 303

Add: <sup>303.1</sup> Port hand spar light **buoys** DBE1 and DBE3 (347.2, 347.3) are moored 0.9 and 0.56 mile NNW of the northern tip of Hornet Island. Starboard hand spar light **buoy** DBE2 (347.4) is moored 0.27 mile NW of the SW extremity of Hornet Island.

(N2001-019.6)

Page 50 — Paragraph 346, lines 1 and 2

Delete: in ruins in 1996,

Replace by: extending 89 feet (27 m) from the shore to a depth of 11 feet (3.5 m) alongside a 69 foot (21 m) long outer end located

(N2001-019.7)

Page 54 — Paragraph 398, lines 2 to 9

Delete: “T-shaped ... 1995.”

Replace by: a Public wharf 246 feet (75 m) long with a depth of 12 feet (3.7 m) alongside a 26 foot (8 m) wide outer end. Close east of the Public wharf, there is a T-shaped wharf in ruins.

(N2001-019.8)

Page 82 — Delete **LUMSDEN SOUTH** Diagram

Replace by **LUMSDEN SOUTH** Diagram published in Section 4 of this Monthly Edition.

(N2001-019.9)

ATL 102 — Newfoundland — East and South Coasts, First Edition, 1995 —

Page 18 — Paragraph 184, line 7

Delete: depth of 2.4 m (8 ft)

Replace by: reported depth of 3.4 m (11 ft)

(N2001-020.9)

Page 49 — Paragraph 56, line 8 – after “pier.”

Add: A floating wharf is moored off the outer end of the pier.

(N2001-021.0)

**SECTION 4 - Edition 07/2001**  
**SAILING DIRECTIONS AND SMALL CRAFT GUIDE CORRECTIONS**

Page 51 — Paragraph 68, line 9 – after “wharf” (Re: Correction promulgated in Monthly Edition No. 4/97)

Delete: in disrepair in 1996

Replace by: with its outer end in ruins

(N2001-021.1)

Page 51 — Paragraph 72, line 7 – after “long”

Insert: which is in ruins

(N2001-021.2)

Page 58 — Paragraph 140, line 6

Delete: 1 m (3 ft)

Replace by: 1.6 m (5 ft)

(N2001-021.3)

Page 74 — Delete **ARNOLD’S COVE** Diagram

Replace by **ARNOLD’S COVE** Diagram published in Section 4 of this Monthly Edition.

(N2001-021.4)

ATL 110 — St. Lawrence River — Cap Whittle/Cap Gaspé to Les Escoumins, First Edition, 1992 —

Page 26 — After paragraph 296

Insert: <sup>296.1</sup> Pointe Noire (Anse du Portage Sainte-Marguerite) sector **light** (private) (*1672.1*) is shown from a tower situated on the shore SW of Quai de la Minière Wabush.

(L2001-024.1)

ATL 112 — St. Lawrence River — Cap-Rouge to Montréal and Rivière Richelieu, Second Edition, 2001 —

Page 13 — **Table 1.3**

Make the following changes under “**Depth**” column.

<b>Berth</b>	<b>Depth</b> metres
1	10.6
2	10.6
3	10.6
4	10.6
5	10.6
Ro-Ro	10.6

(L2001-019)

Page 26 — After paragraph 85

Insert: <sup>85.1</sup> **Bridges.** — Pont Turcotte, a highway bascule bridge with a vertical clearance of 16 m in a closed position, spans Rivière Richelieu about 0.4 mile from its mouth. The bridge can exceptionally be opened and it will be done at the user’s expenses. The bridge operator can be contacted during regular working hours at (450) 780-5700; for evenings and weekends, the number is (450) 746-7349.

(L2001-011.1)

**SECTION 4 - Edition 07/2001**  
**SAILING DIRECTIONS AND SMALL CRAFT GUIDE CORRECTIONS**

Page 31 — After paragraph 129

Insert: <sup>129.1</sup> Petite Traverse **leading lights** (2288, 2289), in line bearing 045½, mark **Petite Traverse de Contrecoeur**. The front light is situated on the east shore of the river, opposite to the south part of Île Saint-Ours (45°55'N, 73°13'W), and is visible on the line of range and also from 045½ to 145½, through east. The rear light is shown from a tower and is visible on the line of range and also from 045½ to 165°, through east. The daymarks are fluorescent orange with black stripes.

(L2001-010.1)

Page 41 — Paragraph 237, line 2

Delete: 50 m

Replace by: 49 m (42 m under severe icing conditions)

(L2001-017.1)

Page 45 — **Table 2.4**

Make the following changes under “**Depth**” column.

<b>Berth</b>	<b>Depth</b> metres
<b>Shell Canada</b>	
103N	7.9
<b>Sunoco</b>	
104	6.1

(L2001-016.1)

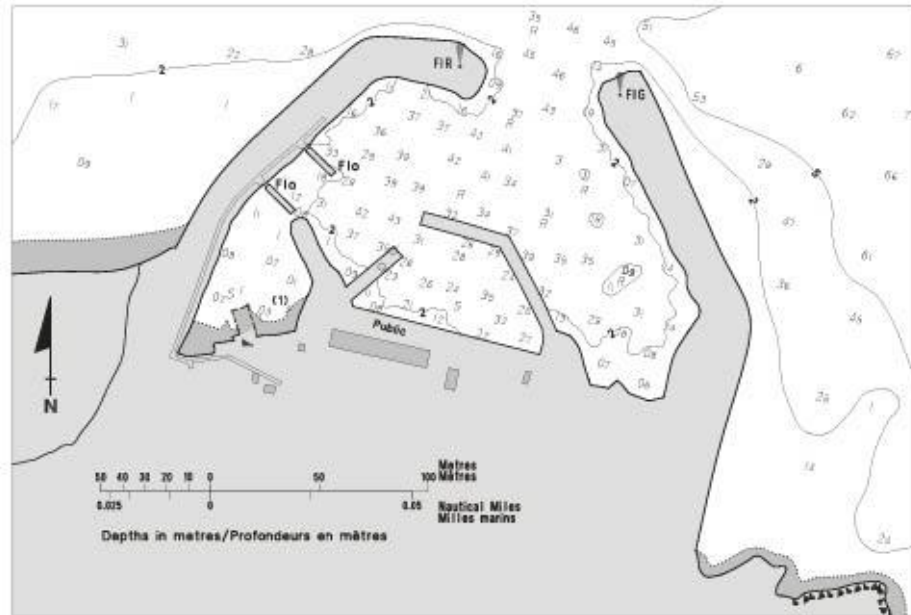
Page 69 — **APPENDICE – Air Obstructions**

Make the following changes under “Bridge/Bare Cable” and “With Ice” columns.

<b>Location</b>	<b>Bridge/Bare Cable</b>	<b>With Ice</b>
Longue Pointe – Île Charron	49 m	42 m

(L2001-017.2)

LUMSDEN SOUTH Scale 1:2 500 Échelle



Sources: Surveyed by CHS in 1992  
and PWC in 1995 and 1999.

Sources: Levé par le SHC en 1992  
et TPC en 1995 et 2000.

[Click Here to Access Graphic: Arnold's Cove](#)

**SECTION 5 – Edition 07/2001**  
**LIST OF LIGHTS, BUOYS AND FOG SIGNALS CORRECTIONS**

No.	Name	Position ----- Latitude N. Longitude W.	Light Characteristics	Focal Height in m. above water	Nomi- nal Range	Description ----- Height in meters above ground	Remarks ----- Fog Signals
<b>NEWFOUNDLAND</b>							
347.2	Long Island Outer Shoal light buoy DBE1	49 29 14.2 55 00 51	Q G	1s	.....	Green spar, marked "DBE1".	Winter spar. Seasonal.  Chart:4595 Edn 07/01 (N99-062)
347.3	Long Island Rocks light buoy DBE3	49 28 50.7 55 00 51	Fl G	4s	.....	Green spar, marked "DBE3".	Winter spar. Seasonal.  Chart:4595 Edn 07/01 (N99-063)
347.4	Swan Island Rock light buoy DBE2	49 27 58 55 01 15.2	Fl R	4s	.....	Red spar, marked "DBE2".	Winter spar. Seasonal.  Chart:4595 Edn 07/01 (N99-061)
<b>ATLANTIC</b>							
208 H3904	Bear River						Delete form List.  Chart:4396 Edn 07/01 (F01-017)
230.2 H3864.5	East Sandy Cove	On outer end of wharf. 44 29 10.8 66 05 04.3	Fl R	4s	6.2 5	Skeleton tower. 6.1	Year round.  Chart:4118 Edn 07/01 (F00-193)
251.8	Fundy Entrance South light buoy M  <b>Racon -- (M)</b> <b>X &amp; S Band</b>	44 13 36 66 50 12	Mo(A) W	6s	.....	Red and white vertical stripes, marked "Fundy Entrance South M".	Year round.  Chart:4011 Edn 07/01 (F01-144)
367.5	Jenkins Head light buoy KP51						Delete from list.  Chart:4241 Edn 07/01 (F00-212)
368	Green Harbour light and bell buoy KP	43 43 14.6 65 09 33	Mo(A) W	6s	.....	Red and white vertical stripes, marked "KP".	Year round.  Chart:4241 Edn 07/01 (F00-211)
431.1	Krout Point (Krout) light buoy T66						Delete from List.  Chart:4395 Edn 07/01 (F00/213)
576	Bar Shoal light buoy YT8	44 42 31.3 63 00 36.8	Fl R	4s	.....	Red, marked "YT8".	Year round.  Chart:4236 Edn 07/01 (F01-029)

**SECTION 5 – Edition 07/2001**  
**LIST OF LIGHTS, BUOYS AND FOG SIGNALS CORRECTIONS**

No.	Name	Position ----- Latitude N. Longitude W.	Light Characteristics	Focal Height in m. above water	Nomi- nal Range	Description ----- Height in meters above ground	Remarks ----- Fog Signals
<b>ATLANTIC</b>							
721 H3396	Petit-de-Grat breakwater	On outer end of breakwater at N. entrance to Petit-de- Grat Inlet. 45 31 04.2 60 57 05.3	Fl G	6s	5.3	3 Skeleton mast. 3.4	Flash 1 s; eclipse 5 s. Seasonal.  <b>Chart:4308</b> <b>Edn 07/01 (G00-059)</b>
860.6 H1176.4	Pleasant Bay breakwater	NE. of breakwater. 46 50 00.5 60 47 50.8	Fl G	4s	7.0	8 Cylindrical mast. 4.1	Seasonal.  <b>Chart:4464</b> <b>Edn 07/01 (G00-057)</b>
901.6	<i>Murdock Shoal light buoy SJ6</i>	45 41 27 62 39 33	Q R	1s	.....	..... <i>Red, marked "SJ6".</i>	Seasonal.  <b>Chart:4437</b> <b>Edn 07/01 (G00-015)</b>
906.5 H1260	Town Point						Delete from List.  <b>Chart:4437</b> <b>Edn 07/01 (G00-050)</b>
958	Georgetown Railway wharf	Near outer end of wharf. 46 10 35.6 62 32 12.5	F R	.....	11.2	10 Square skeleton tower. 9.6	Seasonal.  <b>Chart:4422</b> <b>Edn 07/01 (G01-011)</b>
1023.1	<i>Egmont Bay light buoy DH2</i>	46 27 08.8 64 07 44	Fl R	4s	.....	..... <i>Red spar, marked "DH2".</i>	Seasonal.  <b>Chart:4905</b> <b>Edn 07/01 (G00-060)</b>
1027.4	<i>Egmont Bay light buoy DH</i>						Delete from list.  <b>Chart:4905</b> <b>Edn 07/01 (G00-020)</b>
1039	North Lake Harbour range	On outer end of E. breakwater. 46 28 06.7 62 04 07.6	Q G	1s	9.1	..... Square skeleton tower, white daymark, red vertical stripe. 6.5	Visible in line of range. Seasonal. Delete Fog signal.
1039.1		204°32' 328.1m from front.	Iso G	4s	13.9	..... Square skeleton tower, white daymark, red vertical stripe. 9.2	Visible in line of range. Seasonal.  <b>Chart:4023</b> <b>Edn 07/01 (G00-031)</b>
2134.8 H2404	Yamachiche Bend	On experimental island. 46 12 53 72 49 10	Iso R	2s	10.1	5 On side of mast. 30.0	Operates at night only. Year round. Visibility: 360°.  <b>Chart:1312</b> <b>Edn 07/01</b>
2273	<i>Île aux Foins light buoy M1</i>	<i>Upper end of curve at Île aux Foins.</i> 46 02 08.7 73 09 50.4	Q G	1s	.....	..... <i>Green, marked "M1".</i>	<i>Winter spar.</i> Year round.  <b>Chart:1311</b> <b>Edn 07/01 (L01-045)</b>

**SECTION 5 – Edition 07/2001**  
**LIST OF LIGHTS, BUOYS AND FOG SIGNALS CORRECTIONS**

No.	Name	Position ----- Latitude N. Longitude W.	Light Characteristics	Focal Height in m. above water	Nomi- nal Range	Description ----- Height in meters above ground	Remarks ----- Fog Signals	
<b>ATLANTIC</b>								
2273.5	Lanoraie light buoy M2	46 01 17 73 10 20.5	F R	4s	.....	Red, marked "M2".	Winter spar. Year round.  <b>Chart:1311</b> <b>Edn 07/01 (L01-046)</b>	
2273.6	Lanoraie light buoy M3	46 01 36.9 73 10 02.7	F G	4s	.....	Green, marked "M3".	Seasonal.  <b>Chart:1311</b> <b>Edn 07/01 (L01-048)</b>	
2273.7	Lanoraie light buoy M4	46 00 32 73 10 37	F R	4s	.....	Red, marked "M4".	Seasonal.  <b>Chart:1311</b> <b>Edn 07/01 (L01-058)</b>	
2275.5	Lano D Anchorage light buoy						Delete from List.  <b>Chart:1311</b> <b>Edn 07/01 (L01-054)</b>	
2330 H2482	Île Deslauriers range	E. side of island. 45 42 44.8 73 26 22.8	Iso G	1s	13.0	14	Skeleton tower. 6.1	Operates at night only. Visible in line of range. Year round.
2331 H2482.1		217°32' 2653.3m from front.	Iso G	1s	31.0	18	Skeleton tower. 25.4	Operates at night only. Visible in line of range. Year round.
			Iso G	2s	.....	4	Visible 360°. Increased intensity of range. Operates at night only.	<b>Chart:1310</b> <b>Edn 07/01 (L01/62,063)</b>
<b>INLAND WATERS</b>								
515	West Entrance light buoy TT3	N. side of Western Gap entrance. 43 37 34.8 79 24 40.9	F G	4s	.....	Green, marked "TT3".	Winter spar. Seasonal.  <b>Chart:2085</b> <b>Edn 07/01 (B01/092)</b>	
560.5	Wharf 17	Extreme S. end of wharf. 42 52 42 79 14 55	Fl Y	4s	.....	Mast.	Operated by St. Lawrence Seaway Authority. Seasonal.  <b>Chart:2042</b> <b>Edn 07/01 (B01-095)</b>	



**SECTION 5 – Edition 07/2001**  
**LIST OF LIGHTS, BUOYS AND FOG SIGNALS CORRECTIONS**

No.	Name	Position ----- Latitude N. Longitude W.	Light Characteristics	Focal Height in m. above water	Nomi- nal Range	Description ----- Height in meters above ground	Remarks ----- Fog Signals
-----	------	--	--------------------------	--	-----------------------	--	---------------------------------

**INLAND WATERS**

560.6	Port Colborne Entrance range	42 52 40.9 79 14 52.3	F R	.....	11.1	.....	White cylindrical tower, fluorescent orange triangular daymark, black vertical stripe. 7.4	Seasonal.
560.7		015°15' 470.7m from front.	F R	.....	17.0	.....	White cylindrical tower, fluorescent orange triangular daymark, black vertical stripe. 13.5	Seasonal.  <b>Chart:2042 Edn 07/01 (B01-094)</b>
684.13	<i>Light buoy 89 (U.S.)</i>	<i>E. side of island. 42 11 32 83 08 12</i>	<i>Fl G</i>	<i>4s</i>	.....	.....	<i>Green, marked "89".</i>	<i>Seasonal.</i>  <b>Chart:14853(U.S.) Edn 07/01</b>
684.2	Grassy Island (U.S.)	E. side of island. 42 13 28 83 07 59	Fl G	4s	6.0	5	White and green cylindrical tower, green and white square daymark. 7.3	Year round.  <b>Chart:14853(U.S.) Edn 07/01</b>
733.2	<i>Light buoy 5 (U.S.)</i>							<i>Delete from List.</i>  <b>Chart:14852(U.S.) Edn 07/01</b>
1471.7	Golf Course Bay wharf							Delete from List.  <b>Chart:6218 Edn 07/01</b>

**CANADIAN COAST GUARD  
MARINE INFORMATION REPORT AND SUGGESTION SHEET**

Navigating Officer or Observer: \_\_\_\_\_ Captain: \_\_\_\_\_

Ship (or address) \_\_\_\_\_

If Merchant Vessel add Line or Company with Head Office address: \_\_\_\_\_

General locality: \_\_\_\_\_

Subject: \_\_\_\_\_

Approx. position: \_\_\_\_\_ Lat. \_\_\_\_\_ Long \_\_\_\_\_

Chart No. used to plot: \_\_\_\_\_ (Corrected to N/M No. \_\_\_\_\_ of 2000 ) \_\_\_\_\_ Publications affected: *(Quote Volume and page)*

\* Full details *(Attach additional sheets as necessary)*

Time (UTC) \_\_\_\_\_ Date \_\_\_\_\_

**INSTRUCTIONS:**

Mariners are requested to notify the responsible authorities when new or suspected dangers to navigation are discovered, changes are observed in aids to navigation, or corrections to publications are seen to be necessary.

*\* In the case of new or suspected dangers to navigation, it is important that all details be given in order to aid with future investigations. Items of interest include heights, depths, physical description, type of bottom and equipment method used to position the item. It is helpful to mark details on chart, which will be promptly replaced by the Canadian Hydrographic Service.*

Reports should be made to the nearest Marine Communications and Traffic Services Centre and should be confirmed in writing to:

Director, Navigation Systems  
Canadian Coast Guard  
Department of Fisheries and Oceans  
Ottawa, Ontario, K1A 0E6

In the case of information Canadian navigational aids or the List Department of Lights, Buoys and Fog Signals.

**OR**

Dominion Hydrographer  
Canadian Hydrographic Service  
Department of Fisheries and Oceans  
Ottawa, Ontario, K1A 0E6

In the case of new or suspected dangers to navigation, or where corrections to "Sailing Directions" appear to be necessary.