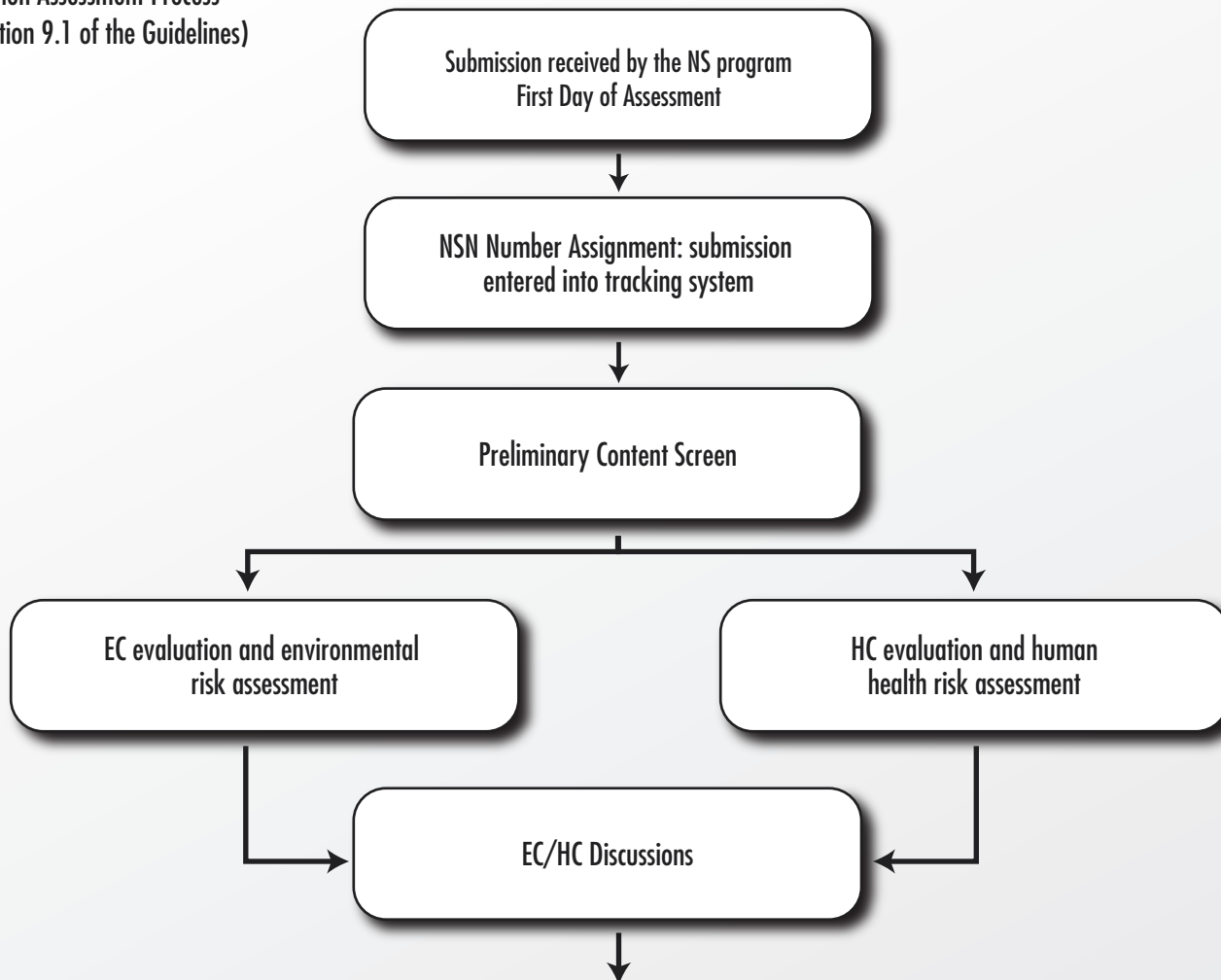





Figure 9-1

Overview of the New Substances Notification Assessment Process
(See section 9.1 of the Guidelines)



 Is the substance suspected to be toxic?	
YES	NO
Consultation with notifier, Legal Services, OoE, and Regional Offices  ↓ Respond to notifier with: <ul style="list-style-type: none"> • Conditions imposed • Request for additional information • Prohibition of manufacture and import and develop regulations; <ul style="list-style-type: none"> – Add to the DSL if listing criteria are met 	 Respond to notifier with: <ul style="list-style-type: none"> • Final assessment outcome letter that manufacture or import may proceed • Add to the DSL if listing criteria are met or • Issue a SNAc Notice for the substance, if necessary; <ul style="list-style-type: none"> – Add to the DSL with a flag if listing criteria are met

OoE = Office of Enforcement EC = Environment Canada HC = Health Canada