



2004
www.cihi.ca

Health Indicators



Statistics
Canada

Statistique
Canada



Canadian Institute
for Health Information

Institut canadien
d'information sur la santé

Contents of this publication may be reproduced in whole or in part provided the intended use is for non-commercial purposes and full acknowledgement is given to the Canadian Institute for Health Information.

Canadian Institute for Health Information
377 Dalhousie Street
Suite 200
Ottawa, Ontario, Canada
K1N 9N8

Telephone: (613) 241-7860
Fax: (613) 241-8120
www.cihi.ca

Health Indicators 2004
ISBN 1-55392-412-6 (PDF)

© 2004 Canadian Institute for Health Information

Cette publication est aussi disponible en français sous le titre :
Indicateurs de santé, 2004
ISBN 1-55392-413-4 (PDF)

Table of Contents

Preface	2
Using This Report	2
Health Indicator Framework	3
Profile	4
Health Status	5
Non-Medical Determinants of Health	6
Health System Performance	7–11, 14
Regional Map	12–13
Community and Health System Characteristics	15–17
Provincial and Territorial Indicators	18
Health Professionals	18
Health Expenditures	18
Health Surveillance	18
Making Sense of the Indicators	19
Definitions and Data Sources	20
General Notes	24

Preface

Since 1999, CIHI and Statistics Canada have collaborated on the Health Indicators Project, developing and providing a broad range of indicators for health regions across the country. As in previous years, *Health Indicators* (released as a companion to the *Health Care in Canada 2004* report), includes the most recent available information about the health care system, the health status, and the determinants of health for Canada's largest regions covering approximately 95% of the population, as well as for provinces and territories.

In this edition, we introduce an indicator related to quality of care in acute care institutions, namely hip fractures that occur in hospital. Also new for this release is a primer on how to make sense of an indicator. In this feature, the key role played by the Health Indicators Framework in interpreting the data is illustrated.

The Health Indicators project has benefited greatly from consultations with our stakeholders across the country. The assistance offered by many individuals in health regions and provinces and territories who reviewed these indicators and offered useful suggestions is gratefully acknowledged.

As always, we welcome your comments about this publication. Please send your suggestions about the indicators or priorities for future indicator development to indicators@cihi.ca.

Using This Report

Rates are provided for all health regions with populations of at least 75,000 as of July 1, 2001.

Confidence intervals are provided for most indicators to aid interpretation. The width of the confidence interval illustrates the degree of variability associated with the rate. Indicator values are estimated to be accurate within the upper and lower confidence interval 19 times out of 20 (95% confidence interval).

Please see Definitions and Data Sources at the back of this report for information on how the indicators are defined and important interpretive notes.

Symbols and Abbreviations Used in This Report

..	Figures not available
*	Data were suppressed due to small numbers
▼	Interpret with caution
95% CI	95% confidence interval
+	Statistically different from the overall average ($p < 0.05$)
Age std rate	Age-standardized rate

Health Indicator Framework

HEALTH STATUS

How healthy are Canadians?

Health status can be measured in a variety of ways, including well-being, health conditions, disability, or death.

Health Conditions	Human Function	Well-Being	Deaths
-------------------	----------------	------------	--------

NON-MEDICAL DETERMINANTS OF HEALTH

Non-medical determinants of health are known to affect our health and, in some cases, when and how we use health care.

Health Behaviours	Living and Working Conditions	Personal Resources	Environmental Factors
-------------------	-------------------------------	--------------------	-----------------------

HEALTH SYSTEM PERFORMANCE

How healthy is the health care system?

These indicators measure various aspects of the quality of health care.

Acceptability	Accessibility	Appropriateness	Competence
Continuity	Effectiveness	Efficiency	Safety

COMMUNITY AND HEALTH SYSTEM CHARACTERISTICS

These measures provide useful contextual information, but are not direct measures of health status or the quality of health care.

Community	Health System	Resources
-----------	---------------	-----------

EQUITY

Map Code	Health Region	Legend Name	Prov./Terr.	Population ('000) (2001)	% Population Age 65+ (2001)	Dependency Ratio (2001)	% Population Urban (2001)
10	Newfoundland and Labrador		N.L.	534	11.9	40.6	57.6
1001	Health and Community Services St. John's Region	St. John's area	N.L.	184	11.6	40.3	83.4
1002	Health and Community Services Eastern Region	Eastern, N.L.	N.L.	113	12.4	41.1	36.6
1003	Health and Community Services Central Region	Central, N.L.	N.L.	102	14.0	43.2	42.4
1004	Health and Community Services Western Region	Western, N.L.	N.L.	83	13.2	42.8	52.4
11	Prince Edward Island		P.E.I.	139	13.4	48.6	44.5
12	Nova Scotia		N.S.	943	13.5	45.5	55.6
1201	Zone 1	Zone 1, N.S.	N.S.	125	16.8	49.9	22.3
1202	Zone 2	Zone 2, N.S.	N.S.	83	15.0	50.2	37.3
1203	Zone 3	Zone 3, N.S.	N.S.	106	15.2	50.2	40.8
1204	Zone 4	Zone 4, N.S.	N.S.	97	15.4	49.5	35.7
1205	Zone 5	Zone 5, N.S.	N.S.	133	15.6	50.0	64.6
1206	Zone 6	Zone 6, N.S.	N.S.	388	10.9	41.0	76.2
13	New Brunswick		N.B.	756	13.1	44.4	50.2
1301	Region 1	Region 1, N.B. (Moncton area)	N.B.	188	13.7	43.3	57.3
1302	Region 2	Region 2, N.B. (Saint John area)	N.B.	176	13.5	47.8	60.6
1303	Region 3	Region 3, N.B. (Fredericton area)	N.B.	168	12.3	44.9	45.3
1306	Region 6	Region 6, N.B. (Bathurst area)	N.B.	85	12.8	40.0	34.3
24	Quebec		Que.	7,418	13.0	44.1	80.2
2401	Région du Bas-Saint-Laurent	Bas-Saint-Laurent	Que.	205	15.4	46.1	51.7
2402	Région du Saguenay-Lac-Saint-Jean	Saguenay-Lac-Saint-Jean	Que.	284	12.5	42.4	71.7
2403	Région de Québec	Région de Québec	Que.	651	14.0	41.5	87.6
2404	Région de la Mauricie et du Centre-du-Québec	Mauricie et Centre-du-Québec	Que.	483	15.1	46.4	67.0
2405	Région de l'Estrie	Estrie	Que.	291	14.0	46.5	63.7
2406	Région de Montréal-Centre	Montréal-Centre	Que.	1,852	15.0	44.7	100.0
2407	Région de l'Outaouais	Outaouais	Que.	323	10.2	42.0	74.1
2408	Région de l'Abitibi-Témiscamingue	Abitibi-Témiscamingue	Que.	149	11.3	44.8	54.4
2409	Région de la Côte-Nord	Côte-Nord	Que.	100	9.7	40.2	68.8
2411	Région de la Gaspésie-Îles-de-la-Madeleine	Gaspésie-Îles-de-la-Madeleine	Que.	99	15.4	46.2	27.7
2412	Région de la Chaudière-Appalaches	Chaudière-Appalaches	Que.	391	12.8	44.3	57.9
2413	Région de Laval	Laval	Que.	350	13.1	45.8	100.0
2414	Région de Lanaudière	Lanaudière	Que.	396	10.6	44.5	71.7
2415	Région des Laurentides	Laurentides	Que.	472	10.9	44.7	69.3
2416	Région de la Montérégie	Montérégie	Que.	1,313	11.4	43.9	81.6
35	Ontario		Ont.	11,895	12.6	46.6	84.6
3501	Champlain DHC	Champlain (Ottawa area)	Ont.	1,100	12.0	44.9	81.2
3502	Southeastern Ontario DHC	Southeastern Ontario	Ont.	508	15.3	50.7	53.8
3503	Durham, Haliburton, Kawartha and Pine Ridge DHC	Durham, Hal., Kawartha and Pine Ridge	Ont.	826	12.6	50.3	75.1
3504	Toronto DHC	Toronto	Ont.	2,592	13.2	44.1	100.0
3505	Simcoe York DHC	Simcoe York	Ont.	1,151	10.2	45.5	85.7
3506	Halton-Peel DHC	Halton-Peel	Ont.	1,423	8.8	43.2	95.9
3507	Waterloo Region-Wellington-Dufferin DHC	Waterloo-Wellington-Dufferin	Ont.	704	11.2	46.9	86.4
3508	Hamilton DHC	Hamilton	Ont.	510	13.9	49.2	92.7
3509	Niagara DHC	Niagara	Ont.	427	16.5	52.9	87.6
3510	Grand River DHC	Grand River (Brantford area)	Ont.	238	13.9	51.8	65.9
3511	Thames Valley DHC	Thames Valley (London area)	Ont.	610	13.0	49.0	81.2
3512	Essex Kent Lambton DHC	Essex Kent Lambton (Windsor area)	Ont.	634	13.4	49.4	78.6
3513	Grey Bruce Huron Perth DHC	Grey Bruce Huron and Perth	Ont.	297	16.3	55.1	49.5
3514	Northern Shores DHC	Northern Shores	Ont.	219	16.2	51.6	52.0
3515	Algoma, Cochrane, Manitoulin and Sudbury DHC	ACMS (Sudbury area)	Ont.	412	13.9	48.0	75.3
3516	Northwestern Ontario DHC	Northwestern Ontario	Ont.	247	12.7	49.6	64.8
46	Manitoba		Man.	1,149	13.6	52.1	71.7
4610	Winnipeg RHA	Winnipeg	Man.	649	13.8	48.1	99.3
4630	Interlake RHA	Interlake	Man.	77	13.7	53.8	21.8
4640	Central RHA	Central	Man.	99	14.0	60.2	36.0
47	Saskatchewan		Sask.	1,017	14.6	55.6	64.1
4704	Regina Qu'Appelle RHA	Regina	Sask.	241	13.7	50.1	81.5
4706	Saskatoon RHA	Saskatoon	Sask.	282	13.0	50.4	79.7
4709	Prince Albert Parkland RHA	Prince Albert	Sask.	75	15.1	60.9	49.0
48	Alberta		Alta.	3,059	10.2	44.2	80.7
4820	Chinook Regional Health Authority	Chinook	Alta.	153	13.1	53.9	68.8
4821	Palliser Health Region	Palliser	Alta.	97	12.6	49.5	75.1
4822	Calgary Health Region	Calgary	Alta.	1,075	9.0	40.0	92.9
4823	David Thompson Regional Health Authority	David Thompson	Alta.	294	11.5	49.5	57.4
4824	East Central Health	East Central	Alta.	110	15.3	55.5	46.7
4825	Capital Health	Capital	Alta.	958	10.5	42.9	90.4
4826	Aspen Regional Health Authority	Aspen	Alta.	176	9.9	51.2	46.6
4827	Peace Country Health	Peace Country	Alta.	129	8.3	46.7	55.2
59	British Columbia		B.C.	4,102	13.2	44.7	84.6
5911	East Kootenay	East Kootenay	B.C.	79	13.7	47.7	61.2
5912	Kootenay/Boundary	Kootenay/Boundary	B.C.	80	15.8	48.8	54.2
5913	Okanagan	Okanagan	B.C.	311	19.4	56.7	72.4
5914	Thompson/Cariboo	Thompson/Cariboo	B.C.	214	13.2	47.1	61.3
5921	Fraser East	Fraser East	B.C.	248	13.7	54.1	80.0
5922	Fraser North	Fraser North	B.C.	539	10.9	39.7	97.4
5923	Fraser South	Fraser South	B.C.	600	11.6	46.9	93.6
5931	Richmond	Richmond	B.C.	172	11.2	36.9	100.0
5932	Vancouver	Vancouver	B.C.	579	12.3	34.7	100.0
5933	North Shore/Coast Garibaldi	North Shore	B.C.	266	13.7	44.0	87.2
5941	South Vancouver Island	South Vancouver Island	B.C.	340	17.5	48.5	90.3
5942	Central Vancouver Island	Central Vancouver Island	B.C.	240	17.3	54.0	69.2
5943	North Vancouver Island	North Vancouver Island	B.C.	114	12.4	47.0	68.7
5951	Northwest	Northwest	B.C.	84	7.4	45.6	62.0
5952	Northern Interior	Northern Interior	B.C.	150	8.0	42.8	64.2
60	Yukon Territory		Y.T.	30	5.8	35.8	58.7
61	Northwest Territories		N.W.T.	41	4.3	44.6	58.3
62	Nunavut		Nun.	28	2.5	65.7	32.4
	Canada		Canada	31,111	12.6	45.8	79.6

Map Code	Health Region	Self-Rated Health (Fair/Poor) 2000-2001		Asthma Rate 2000-2001		Diabetes Rate 2000-2001	
		%	95% CI	%	95% CI	%	95% CI
N.L.		12.5	(11.3-13.7)	6.6	(5.7-7.5)	5.8	(4.9-6.7)
1001	St. John's area	11.9	(9.8-14.1)	6.5	(4.7-8.3)	5.4	(3.7-7.1)
1002	Eastern, N.L.	13.2	(10.9-15.5)	7.5	(5.6-9.4)	6.1	(4.5-7.6)
1003	Central, N.L.	13.1	(10.7-15.4)	6.3▼	(4.2-8.5)	7.4	(5.4-9.4)
1004	Western, N.L.	12.5	(8.9-16.1)	6.0	(4.1-8.0)	5.1	(3.4-6.7)
P.E.I.		12.4	(11.1-13.7)	8.5	(7.4-9.6)	5.0	(4.1-5.9)
N.S.		14.4	(13.4-15.4)	9.1	(8.2-10.1)	5.2	(4.4-5.9)
1201	Zone 1, N.S.	17.8	(15.4-20.3)	9.0	(6.7-11.3)	6.6	(5.1-8.1)
1202	Zone 2, N.S.	14.6	(11.7-17.5)	9.1	(6.3-12.0)	4.6	(3.2-6.1)
1203	Zone 3, N.S.	16.4	(13.4-19.3)	9.0	(6.4-11.6)	7.0	(5.1-8.9)
1204	Zone 4, N.S.	15.3	(12.1-18.6)	8.1▼	(5.5-10.8)	6.9▼	(3.6-10.3)
1205	Zone 5, N.S.	16.0	(13.6-18.4)	9.3	(6.9-11.8)	5.9	(4.3-7.5)
1206	Zone 6, N.S.	11.9	(10.1-13.6)	9.4	(7.6-11.2)	3.6▼	(2.4-4.8)
N.B.		16.0	(14.8-17.2)	8.6	(7.7-9.5)	5.1	(4.4-5.8)
1301	Region 1, N.B. (Moncton area)	16.1	(13.5-18.7)	10.4	(8.5-12.3)	5.0	(3.5-6.4)
1302	Region 2, N.B. (Saint John area)	13.3	(10.9-15.8)	7.9	(6.1-9.8)	4.5	(3.2-5.8)
1303	Region 3, N.B. (Fredericton area)	15.2	(12.0-18.4)	8.8	(6.6-11.0)	5.5	(3.8-7.1)
1306	Region 6, N.B. (Bathurst area)	17.1	(13.5-20.7)	8.0	(6.0-10.0)	4.5▼	(2.5-6.6)
Que.		11.1	(10.5-11.7)	8.7	(8.1-9.3)	4.1	(3.8-4.5)
2401	Bas-Saint-Laurent	13.0	(10.8-15.1)	7.1	(5.5-8.8)	4.2	(3.0-5.3)
2402	Saguenay-Lac-Saint-Jean	9.2	(7.4-10.9)	9.7	(7.9-11.5)	3.5▼	(2.1-4.9)
2403	Région de Québec	9.0	(7.5-10.6)	7.9	(6.1-9.6)	5.2	(4.0-6.5)
2404	Mauricie et Centre-du-Québec	11.4	(9.6-13.2)	7.4	(6.0-8.9)	3.1▼	(2.1-4.1)
2405	Estrie	11.2	(8.7-13.6)	6.0	(4.5-7.4)	3.6▼	(2.3-4.9)
2406	Montréal-Centre	11.8	(10.4-13.1)	8.9	(7.6-10.2)	4.3	(3.4-5.1)
2407	Outaouais	15.2	(12.7-17.8)	10.7	(8.6-12.8)	4.4	(3.3-5.4)
2408	Abitibi-Témiscamingue	12.4	(10.2-14.6)	8.2	(6.3-10.1)	3.2	(2.2-4.1)
2409	Côte-Nord	12.4	(9.5-15.2)	10.0	(7.0-13.1)	5.1	(3.5-6.8)
2411	Gaspésie-Îles-de-la-Madeleine	13.9	(11.9-15.9)	9.1	(7.2-11.1)	4.6	(3.1-6.1)
2412	Chaudière-Appalaches	10.1	(8.2-12.0)	6.3	(4.8-7.8)	3.1▼	(2.1-4.1)
2413	Laval	10.1	(8.2-12.0)	7.4	(5.7-9.2)	3.9	(2.8-5.1)
2414	Lanaudière	10.7	(9.1-12.3)	8.9	(7.3-10.4)	4.3	(3.2-5.4)
2415	Laurentides	9.0	(7.2-10.8)	9.6	(7.6-11.6)	3.9	(2.9-4.9)
2416	Montréal-Nord	11.2	(9.5-12.8)	9.9	(8.1-11.7)	4.3	(3.3-5.2)
Ont.		12.2	(11.7-12.6)	8.5	(8.1-8.8)	4.2	(4.0-4.4)
3501	Champlain (Ottawa area)	11.9	(10.7-13.2)	9.7	(8.6-10.9)	3.6	(2.9-4.4)
3502	Southeastern Ontario	12.3	(11.0-13.6)	10.4	(9.0-11.8)	4.6	(3.7-5.4)
3503	Durham, Haliburton, Kawartha and Pine Ridge	11.8	(10.2-13.4)	9.3	(8.1-10.5)	4.5	(3.7-5.3)
3504	Toronto	12.6	(11.2-14.0)	6.4	(5.4-7.4)	3.5	(2.7-4.2)
3505	Simcoe York	10.7	(9.3-12.2)	8.0	(6.8-9.2)	4.0	(3.3-4.8)
3506	Halton-Peel	9.7	(8.6-10.8)	8.2	(7.1-9.3)	3.9	(3.2-4.5)
3507	Waterloo-Wellington-Dufferin	10.7	(9.4-12.0)	9.5	(8.2-10.8)	3.5	(2.7-4.2)
3508	Hamilton	14.7	(12.6-16.9)	10.4	(8.7-12.1)	5.2	(3.9-6.5)
3509	Niagara	12.7	(10.3-15.1)	8.0	(5.8-10.2)	5.5	(3.9-7.1)
3510	Grand River (Brantford area)	14.8	(12.9-16.6)	9.6	(7.8-11.3)	4.1	(3.2-5.0)
3511	Thames Valley (London area)	10.1	(8.5-11.7)	8.2	(6.9-9.5)	4.5	(3.7-5.4)
3512	Essex Kent Lambton (Windsor area)	14.2	(12.6-15.9)	10.0	(8.6-11.4)	5.7	(4.7-6.6)
3513	Grey Bruce Huron and Perth	13.3	(11.6-14.9)	8.4	(6.9-9.9)	5.7	(4.6-6.8)
3514	Northern Shores	15.2	(13.5-16.9)	9.4	(8.1-10.8)	4.6	(3.6-5.6)
3515	ACMS (Sudbury area)	17.4	(15.6-19.1)	9.9	(8.6-11.3)	5.5	(4.6-6.5)
3516	Northwestern Ontario	14.4	(12.4-16.4)	8.6	(6.8-10.4)	4.3	(3.2-5.4)
Man.		12.5	(11.5-13.4)	8.5	(7.5-9.5)	4.0	(3.4-4.6)
4610	Winnipeg	12.3	(10.8-13.7)	8.8	(7.3-10.4)	3.4	(2.5-4.4)
4630	Interlake	13.1	(9.7-16.5)	10.7	(8.4-12.9)	7.0	(5.3-8.7)
4640	Central
Sask.		12.8	(11.9-13.8)	7.5	(6.7-8.2)	4.0	(3.5-4.5)
4704	Regina	12.7	(10.5-14.8)	8.5	(6.9-10.2)	2.9▼	(1.9-3.8)
4706	Saskatoon	12.0	(9.9-14.0)	6.7	(5.1-8.3)	3.5	(2.5-4.5)
4709	Prince Albert	13.8	(10.6-17.0)	7.8	(6.0-9.6)	6.5▼	(4.0-8.9)
Alta.		10.5	(9.7-11.2)	8.9	(8.2-9.6)	3.4	(3.0-3.8)
4820	Chinook	12.2	(9.4-14.9)	9.0	(7.1-11.0)	4.1▼	(2.6-5.6)
4821	Palliser
4822	Calgary
4823	David Thompson
4824	East Central
4825	Capital
4826	Aspen
4827	Peace Country
B.C.		12.4	(11.9-13.0)	7.6	(7.1-8.1)	3.9	(3.6-4.2)
5911	East Kootenay	12.1	(9.6-14.6)	7.7▼	(5.1-10.2)	4.0▼	(2.4-5.5)
5912	Kootenay/Boundary	18.1	(15.5-20.8)	8.0	(6.0-9.9)	4.1▼	(2.6-5.5)
5913	Okanagan	13.8	(11.7-15.8)	8.7	(7.2-10.1)	4.0	(3.0-5.0)
5914	Thompson/Cariboo	12.9	(11.2-14.6)	7.3	(5.6-9.0)	4.3	(3.3-5.3)
5921	Fraser East	14.1	(11.9-16.4)	9.4	(7.3-11.5)	5.5	(4.2-6.8)
5922	Fraser North	11.9	(10.4-13.4)	8.7	(7.3-10.0)	4.0	(3.1-4.9)
5923	Fraser South	12.8	(10.7-14.9)	7.0	(5.4-8.7)	3.2▼	(1.9-4.4)
5931	Richmond	12.7	(9.8-15.6)	6.4	(4.5-8.3)	3.4▼	(2.2-4.6)
5932	Vancouver	12.9	(10.8-14.9)	6.6	(4.9-8.2)	4.0	(2.7-5.2)
5933	North Shore	8.0	(6.5-9.5)	6.5	(5.1-8.0)	2.9	(2.1-3.8)
5941	South Vancouver Island
5942	Central Vancouver Island
5943	North Vancouver Island
5951	Northwest	9.9	(6.9-12.9)	6.3	(4.4-8.3)	5.0▼	(3.1-6.9)
5952	Northern Interior	12.6	(10.3-14.9)	8.4	(6.4-10.3)	4.3	(2.9-5.6)
Y.T.		10.3	(7.9-12.6)	9.2	(6.8-11.7)	3.2▼	(2.0-4.4)
N.W.T.		13.0	(11.5-14.4)	8.4	(5.6-11.2)	2.8	(1.9-3.6)
Nun.		10.1	(8.6-11.6)	3.6	(3.1-4.1)	1.9	(1.1-2.6)
Canada		12.0	(11.7-12.2)	8.4	(8.2-8.6)	4.1	(4.0-4.3)

NON-MEDICAL DETERMINANTS OF HEALTH

Map Code	Health Region	Average Personal Income \$ (2000 Income)	Low Income Rate % (2000 Income)	Post-Secondary Graduates % (2001)	High School Graduates % (2001)	Unemployment Rate % (2002)	Youth Unemployment Rate % (2002)
N.L.		22,620	18.8	52.8	79.3	16.9	23.6
1001	St. John's area	26,611	18.0	63.7	88.9	9.5	17.4
1002	Eastern, N.L.	19,804	18.9	47.0	70.4	25.1	36.8
1003	Central, N.L.	19,915	17.9	43.0	71.7	21.4	26.6
1004	Western, N.L.	19,981	23.3	48.5	72.1	19.9	25.6
PE.I.		23,710	12.6	53.3	79.8	12.1	16.3
N.S.		25,297	16.6	58.0	84.6	9.7	18.3
1201	Zone 1, N.S.	22,802	15.5	49.9	74.1	11.0	19.6
1202	Zone 2, N.S.	22,778	16.2	56.6	78.7	7.7	16.0
1203	Zone 3, N.S.	22,926	15.4	52.0	79.9	8.9	17.3
1204	Zone 4, N.S.	23,325	15.6	55.6	85.6	13.2	22.3
1205	Zone 5, N.S.	20,776	22.8	52.1	81.3	15.8	24.0
1206	Zone 6, N.S.	29,261	15.5	64.4	89.4	7.6	16.2
N.B.		24,091	15.7	48.6	83.7	10.4	15.6
1301	Region 1, N.B. (Moncton area)	24,565	13.6	51.0	86.3	9.1	11.6
1302	Region 2, N.B. (Saint John area)	25,698	16.7	50.6	85.2	8.8	15.9
1303	Region 3, N.B. (Fredericton area)	25,558	12.8	52.8	85.7	8.6	13.2
1306	Region 6, N.B. (Bathurst area)	21,232	19.1	41.3	77.1	18.0	27.0
Que.		27,125	19.1	53.7	84.2	8.6	13.5
2401	Bas-Saint-Laurent	22,370	16.3	48.6	79.6	10.7	16.5
2402	Saguenay-Lac-Saint-Jean	24,910	15.6	53.4	82.5	12.0	19.0
2403	Région de Québec	27,297	19.1	60.6	90.0	6.5	9.0
2404	Mauricie et Centre-du-Québec	23,675	17.5	49.5	79.2	9.6	13.9
2405	Estrie	24,623	16.0	50.2	83.0	7.8	11.4
2406	Montréal-Centre	28,258	29.0	60.6	89.0	9.7	13.1
2407	Outaouais	29,410	16.5	52.1	82.1	7.9	16.0
2408	Abitibi-Témiscamingue	25,182	15.7	44.5	71.1	10.8	18.7
2409	Côte-Nord	27,029	14.3	45.2	73.1	12.0	*
2411	Gaspésie-Îles-de-la-Madeleine	21,202	17.8	41.5	72.8	21.1	32.5
2412	Chaudière-Appalaches	24,088	12.7	50.2	83.1	6.5	13.3
2413	Laval	29,356	16.0	56.3	86.1	8.5	12.3
2414	Lanaudière	26,327	15.2	45.4	77.3	7.6	11.3
2415	Laurentides	27,753	14.6	48.6	79.3	8.2	14.9
2416	Montérégie	28,943	14.4	51.4	82.8	7.1	13.5
Ont.		32,865	14.4	57.3	87.9	7.1	13.9
3501	Champlain (Ottawa area)	35,586	14.3	63.4	91.5	7.3	13.5
3502	Southeastern Ontario	28,438	12.8	54.3	85.9	7.7	16.1
3503	Durham, Haliburton, Kawartha and Pine Ridge	32,172	9.5	54.0	87.9	6.0	13.4
3504	Toronto	34,406	22.6	61.1	89.6	8.4	15.3
3505	Simcoe York	35,456	9.8	59.2	89.6	5.8	14.5
3506	Halton-Peel	37,041	10.4	59.5	89.3	6.7	12.5
3507	Waterloo-Wellington-Dufferin	32,646	10.0	54.7	85.6	5.1	9.0
3508	Hamilton	29,489	19.8	53.6	85.6	7.6	15.6
3509	Niagara	29,030	12.7	52.2	87.6	7.0	13.1
3510	Grand River (Brantford area)	28,278	11.0	49.3	80.7	7.9	17.8
3511	Thames Valley (London area)	30,415	13.5	55.1	86.2	7.1	13.7
3512	Essex Kent Lambton (Windsor area)	31,791	12.2	51.0	86.3	7.5	14.5
3513	Grey Bruce Huron and Perth	28,070	9.3	49.6	79.2	4.6	8.0
3514	Northern Shores	25,677	14.7	51.2	83.2	8.2	18.1
3515	ACMS (Sudbury area)	27,512	15.4	51.9	83.8	8.8	18.4
3516	Northwestern Ontario	29,155	12.0	51.2	78.2	6.3	13.0
Man.		26,416	17.5	50.6	79.2	10.2	5.2
4610	Winnipeg	28,520	20.0	55.2	85.0	5.4	10.7
4630	Interlake	24,702	10.2	46.7	74.6	5.5	9.7
4640	Central	23,298	12.8	41.7	67.7	3.6	8.7
Sask.		25,811	15.8	51.6	79.5	5.7	11.0
4704	Regina	28,377	15.3	54.4	83.1	5.3	9.9
4706	Saskatoon	27,036	17.1	57.2	84.9	5.8	11.7
4709	Prince Albert	23,889	19.3	49.6	75.0	8.3	17.3
Alta.		31,350	13.8	56.8	83.0	5.3	10.7
4820	Chinook	25,590	13.8	51.6	77.4	6.1	13.0
4821	Palliser	27,518	12.4	46.6	74.0	4.1	*
4822	Calgary	35,211	13.7	61.7	87.3	5.6	12.6
4823	David Thompson	27,803	11.1	50.4	76.6	5.4	10.0
4824	East Central	26,582	10.4	49.1	77.9	3.2	*
4825	Capital	30,442	16.2	58.1	84.5	5.1	9.3
4826	Aspen	27,202	11.8	47.2	72.1	5.3	10.4
4827	Peace Country	29,036	10.8	48.9	75.6	5.5	*
B.C.		29,614	17.8	57.7	86.2	8.5	14.9
5911	East Kootenay	27,229	13.1	53.7	81.0	8.5	*
5912	Kootenay/Boundary	26,184	14.1	56.9	87.0	11.3	*
5913	Okanagan	26,245	14.5	54.9	83.7	8.8	17.5
5914	Thompson/Cariboo	26,521	15.0	50.9	80.6	10.0	20.0
5921	Fraser East	26,556	14.6	48.9	79.4	8.4	14.8
5922	Fraser North	29,783	21.4	60.9	90.0	8.0	14.9
5923	Fraser South	30,696	15.5	53.9	82.6	7.4	11.2
5931	Richmond	27,543	23.9	60.5	91.5	9.3	12.9
5932	Vancouver	31,149	27.0	65.0	92.0	8.1	13.1
5933	North Shore	38,348	13.7	66.7	90.2	6.4	12.0
5941	South Vancouver Island	30,197	14.4	63.0	89.0	7.0	14.5
5942	Central Vancouver Island	26,752	16.1	54.2	79.7	9.1	15.3
5943	North Vancouver Island	27,698	14.8	51.0	78.6	12.7	*
5951	Northwest	28,910	13.5	48.1	77.3	12.5	*
5952	Northern Interior	29,485	14.3	47.0	78.2	13.7	26.7
Y.T.		31,917	**	63.1	85.4	**	**
N.W.T.		35,012	**	55.8	77.5	**	**
Nun.		26,924	**	43.0	64.7	**	**
Canada		29,769	16.2	55.7	85.3	7.7	13.6

Map Code	Health Region	In-Hospital 30-Day Acute Myocardial Infarction Mortality Rate 1999–2000 to 2001–2002		In-Hospital 30-Day Stroke Mortality Rate 1999–2000 to 2001–2002	
		%	95% CI	%	95% CI
N.L.		**	** **	*23.8	(21.8–25.7)
1001	St. John's area	**	** **	19.8	(16.2–23.4)
1002	Eastern, N.L.	**	** **	*30.6	(26.6–34.6)
1003	Central, N.L.	**	** **	*25.8	(21.7–30.0)
1004	Western, N.L.	**	** **	18.7	(14.2–23.1)
P.E.I.		12.0	(9.8–14.2)	21.7	(18.2–25.2)
N.S.		*13.6	(12.7–14.5)	*24.2	(22.8–25.6)
1201	Zone 1, N.S.	14.1	(11.8–16.4)	*26.3	(23.0–29.7)
1202	Zone 2, N.S.	14.7	(11.5–17.8)	22.7	(18.1–27.4)
1203	Zone 3, N.S.	14.3	(11.7–17.0)	*23.0	(19.0–27.0)
1204	Zone 4, N.S.	*16.3	(13.3–19.3)	*26.3	(22.4–30.2)
1205	Zone 5, N.S.	*14.3	(12.3–16.4)	20.3	(17.1–23.4)
1206	Zone 6, N.S.	11.7	(10.2–13.2)	*25.7	(22.9–28.5)
N.B.		12.7	(11.8–13.7)	19.2	(17.7–20.7)
1301	Region 1, N.B. (Moncton area)	11.0	(9.1–13.0)	18.4	(15.5–21.4)
1302	Region 2, N.B. (Saint John area)	11.9	(9.9–13.9)	17.8	(14.5–21.1)
1303	Region 3, N.B. (Fredericton area)	*14.4	(12.4–16.5)	20.5	(17.3–23.7)
1306	Region 6, N.B. (Bathurst area)	14.3	(11.4–17.3)	14.8	(10.4–19.2)
Que.		**	** **	**	** **
2401	Bas-Saint-Laurent	**	** **	**	** **
2402	Saguenay–Lac-Saint-Jean	**	** **	**	** **
2403	Région de Québec	**	** **	**	** **
2404	Mauricie et Centre-du-Québec	**	** **	**	** **
2405	Estrie	**	** **	**	** **
2406	Montréal-Centre	**	** **	**	** **
2407	Outaouais	**	** **	**	** **
2408	Abitibi-Témiscamingue	**	** **	**	** **
2409	Côte-Nord	**	** **	**	** **
2411	Gaspésie-Îles-de-la-Madeleine	**	** **	**	** **
2412	Chaudière-Appalaches	**	** **	**	** **
2413	Laval	**	** **	**	** **
2414	Lanaudière	**	** **	**	** **
2415	Laurentides	**	** **	**	** **
2416	Montérégie	**	** **	**	** **
Ont.		12.0	(11.7–12.2)	18.5	(18.2–18.9)
3501	Champlain (Ottawa area)	*10.8	(10.0–11.6)	17.9	(16.7–19.2)
3502	Southeastern Ontario	12.4	(11.3–13.6)	20.2	(18.5–21.9)
3503	Durham, Haliburton, Kawartha and Pine Ridge	11.9	(11.0–12.9)	18.2	(16.8–19.7)
3504	Toronto	11.6	(11.1–12.1)	*17.8	(17.0–18.5)
3505	Simcoe York	12.7	(11.7–13.7)	19.0	(17.7–20.4)
3506	Halton–Peel	11.0	(10.0–11.9)	*17.3	(16.0–18.6)
3507	Waterloo–Wellington–Dufferin	11.8	(10.7–13.0)	18.2	(16.6–19.8)
3508	Hamilton	*10.3	(9.3–11.3)	18.9	(17.2–20.6)
3509	Niagara	12.4	(11.3–13.5)	20.1	(18.4–21.8)
3510	Grand River (Brantford area)	*14.4	(12.8–16.0)	19.7	(17.2–22.2)
3511	Thames Valley (London area)	11.5	(10.5–12.5)	18.8	(17.1–20.5)
3512	Essex Kent Lambton (Windsor area)	*12.9	(11.9–13.9)	18.3	(16.8–19.8)
3513	Grey Bruce Huron and Perth	*14.0	(12.5–15.4)	*15.3	(13.3–17.4)
3514	Northern Shores	*14.7	(13.1–16.4)	*21.2	(18.8–23.7)
3515	ACMS (Sudbury area)	*13.2	(12.0–14.4)	*22.5	(20.6–24.4)
3516	Northwestern Ontario	12.6	(11.0–14.1)	16.9	(14.5–19.3)
Man.		11.5	(10.7–12.3)	*20.3	(19.1–21.4)
4610	Winnipeg	*10.7	(9.6–11.7)	19.9	(18.4–21.4)
4630	Interlake	11.7	(8.6–14.8)	19.7	(15.4–24.0)
4640	Central	11.4	(8.5–14.3)	22.2	(18.1–26.2)
Sask.		11.9	(11.0–12.8)	17.8	(16.6–19.1)
4704	Regina	10.7	(8.8–12.6)	16.1	(13.2–18.9)
4706	Saskatoon	11.2	(9.4–13.1)	17.1	(14.7–19.5)
4709	Prince Albert	11.7	(8.1–15.3)	20.5	(15.5–25.6)
Alta.		*9.6	(8.9–10.2)	*15.5	(14.7–16.3)
4820	Chinook	10.6	(8.3–12.9)	18.7	(15.2–22.3)
4821	Palliser	*8.4	(5.6–11.2)	17.7	(14.0–21.4)
4822	Calgary	*8.7	(7.6–9.7)	*14.7	(13.2–16.3)
4823	David Thompson	*9.6	(7.9–11.3)	20.2	(17.6–22.7)
4824	East Central	10.8	(8.3–13.3)	*14.5	(11.0–18.0)
4825	Capital	*9.1	(8.0–10.3)	*13.7	(12.2–15.1)
4826	Aspen	11.2	(8.5–14.0)	17.2	(13.5–20.9)
4827	Peace Country	12.4	(8.8–15.9)	15.9	(11.5–20.4)
B.C.		**	** **	**	** **
5911	East Kootenay	**	** **	**	** **
5912	Kootenay/Boundary	**	** **	**	** **
5913	Okanagan	**	** **	**	** **
5914	Thompson/Cariboo	**	** **	**	** **
5921	Fraser East	**	** **	**	** **
5922	Fraser North	**	** **	**	** **
5923	Fraser South	**	** **	**	** **
5931	Richmond	**	** **	**	** **
5932	Vancouver	**	** **	**	** **
5933	North Shore	**	** **	**	** **
5941	South Vancouver Island	**	** **	**	** **
5942	Central Vancouver Island	**	** **	**	** **
5943	North Vancouver Island	**	** **	**	** **
5951	Northwest	**	** **	**	** **
5952	Northern Interior	**	** **	**	** **
Y.T.		9.8	(1.2–18.3)	15.7	(3.3–28.2)
N.W.T.		*		19.1	(7.5–30.7)
Nun.		*		*	
Canada		11.8		18.7	

HEALTH SYSTEM PERFORMANCE

Map Code	Health Region	Asthma Readmission Rate 2000–2001 to 2002–2003		Pneumonia Readmission Rate 2000–2001 to 2002–2003		Acute Myocardial Infarction Readmission Rate 2000–2001 to 2002–2003	
		%	95% CI	%	95% CI	%	95% CI
N.L.		5.4	(3.7–7.0)	2.6	(1.8–3.5)	**	** **
1001	St. John's area	4.5	(1.3–7.7)	1.9	(0.1–3.7)	**	** **
1002	Eastern, N.L.	5.9	(2.8–9.0)	2.1	(0.4–3.9)	**	** **
1003	Central, N.L.	4.5	(0.4–8.5)	1.7	(0.8–3.7)	**	** **
1004	Western, N.L.	5.5	(1.0–10.1)	3.8	(1.9–5.8)	**	** **
P.E.I.		5.0	(2.9–7.2)	4.1	(2.8–5.5)	*6.5	(4.7–8.2)
N.S.		3.7	(2.2–5.1)	3.1	(2.5–3.7)	4.1	(3.4–4.8)
1201	Zone 1, N.S.	5.9	(2.2–9.6)	2.3	(0.7–3.9)	4.1	(2.3–5.9)
1202	Zone 2, N.S.	*		3.3	(1.4–5.1)	5.8	(3.5–8.2)
1203	Zone 3, N.S.	5.1	(0.8–9.5)	3.4	(1.9–4.9)	2.9	(0.9–4.9)
1204	Zone 4, N.S.	*		3.4	(1.8–5.0)	5.0	(2.8–7.3)
1205	Zone 5, N.S.	3.5	(1.5–7.9)	3.1	(1.7–4.4)	4.1	(2.5–5.7)
1206	Zone 6, N.S.	3.9	(1.6–6.2)	3.4	(2.1–4.6)	3.9	(2.8–5.0)
N.B.		4.2	(3.0–5.4)	2.8	(2.2–3.4)	5.1	(4.3–5.9)
1301	Region 1, N.B. (Moncton area)	3.0	(0.2–5.8)	3.3	(1.9–4.7)	4.0	(2.4–5.7)
1302	Region 2, N.B. (Saint John area)	6.0	(2.8–9.1)	2.4	(1.0–3.7)	*2.3	(0.7–3.9)
1303	Region 3, N.B. (Fredericton area)	2.7	(0.2–5.2)	2.3	(0.9–3.7)	*8.1	(6.4–9.9)
1306	Region 6, N.B. (Bathurst area)	3.6	(0.7–6.5)	3.3	(1.5–5.1)	*7.0	(4.6–9.5)
Que.		**	** **	**	** **	**	** **
2401	Bas-Saint-Laurent	**	** **	**	** **	**	** **
2402	Saguenay–Lac-Saint-Jean	**	** **	**	** **	**	** **
2403	Région de Québec	**	** **	**	** **	**	** **
2404	Mauricie et Centre-du-Québec	**	** **	**	** **	**	** **
2405	Estrie	**	** **	**	** **	**	** **
2406	Montréal-Centre	**	** **	**	** **	**	** **
2407	Outaouais	**	** **	**	** **	**	** **
2408	Abitibi-Témiscamingue	**	** **	**	** **	**	** **
2409	Côte-Nord	**	** **	**	** **	**	** **
2411	Gaspésie-Îles-de-la-Madeleine	**	** **	**	** **	**	** **
2412	Chaudière-Appalaches	**	** **	**	** **	**	** **
2413	Laval	**	** **	**	** **	**	** **
2414	Lanaudière	**	** **	**	** **	**	** **
2415	Laurentides	**	** **	**	** **	**	** **
2416	Montérégie	**	** **	**	** **	**	** **
Ont.		5.1	(4.7–5.5)	3.0	(2.8–3.2)	4.7	(4.5–4.9)
3501	Champlain (Ottawa area)	4.4	(2.8–5.9)	2.8	(2.1–3.5)	*3.5	(2.8–4.1)
3502	Southeastern Ontario	5.4	(3.5–7.3)	3.4	(2.6–4.3)	4.8	(3.9–5.7)
3503	Durham, Haliburton, Kawartha and Pine Ridge	4.9	(3.4–6.5)	2.5	(1.8–3.3)	5.2	(4.5–5.9)
3504	Toronto	5.5	(4.6–6.5)	3.5	(2.9–4.0)	4.0	(3.6–4.5)
3505	Simcoe York	5.4	(4.1–6.7)	3.3	(2.5–4.0)	4.3	(3.5–5.0)
3506	Halton–Peel	4.1	(2.8–5.4)	2.5	(1.8–3.2)	*3.6	(2.9–4.3)
3507	Waterloo–Wellington–Dufferin	4.3	(2.6–5.9)	2.3	(1.4–3.2)	3.8	(2.9–4.6)
3508	Hamilton	2.8	(0.2–5.3)	3.3	(2.4–4.3)	3.8	(3.0–4.6)
3509	Niagara	6.2	(4.4–8.0)	2.8	(1.8–3.8)	4.4	(3.5–5.2)
3510	Grand River (Brantford area)	5.9	(3.2–8.7)	3.7	(2.5–4.9)	*6.4	(5.3–7.6)
3511	Thames Valley (London area)	5.6	(3.4–7.8)	2.4	(1.5–3.4)	4.9	(4.1–5.7)
3512	Essex Kent Lambton (Windsor area)	*2.9	(1.0–4.8)	3.1	(2.2–4.0)	*6.5	(5.8–7.2)
3513	Grey Bruce Huron and Perth	3.8	(1.3–6.3)	2.7	(1.7–3.7)	*6.2	(5.2–7.2)
3514	Northern Shores	3.7	(1.3–6.0)	2.6	(1.5–3.7)	*7.5	(6.3–8.6)
3515	ACMS (Sudbury area)	*7.7	(6.1–9.2)	3.6	(2.8–4.5)	*6.3	(5.5–7.2)
3516	Northwestern Ontario	*7.5	(5.2–9.8)	2.9	(1.8–3.9)	*7.1	(5.9–8.2)
Man.		**	** **	**	** **	**	** **
4610	Winnipeg	**	** **	**	** **	**	** **
4630	Interlake	**	** **	**	** **	**	** **
4640	Central	**	** **	**	** **	**	** **
Sask.		5.7	(4.5–6.9)	3.4	(3.0–3.9)	4.2	(3.5–4.9)
4704	Regina	6.9	(4.9–8.9)	2.5	(1.3–3.7)	3.1	(1.6–4.7)
4706	Saskatoon	5.5	(2.8–8.2)	2.5	(1.4–3.7)	4.8	(3.5–6.2)
4709	Prince Albert	8.0	(2.6–13.5)	3.2	(1.5–4.9)	4.4	(1.7–7.0)
Alta.		4.9	(4.1–5.6)	3.2	(2.8–3.6)	*3.5	(3.0–3.9)
4820	Chinook	4.9	(1.7–8.1)	*4.6	(3.3–5.9)	4.2	(2.4–6.1)
4821	Palliser	*		2.5	(0.6–4.4)	3.7	(1.6–5.9)
4822	Calgary	4.3	(2.8–5.7)	2.4	(1.7–3.2)	*2.6	(1.7–3.4)
4823	David Thompson	6.2	(4.5–7.9)	*4.7	(3.7–5.7)	5.6	(4.2–6.9)
4824	East Central	5.0	(2.3–7.6)	2.7	(1.3–4.1)	6.5	(4.5–8.5)
4825	Capital	4.2	(2.6–5.8)	2.9	(2.1–3.7)	*2.1	(1.2–3.0)
4826	Aspen	5.2	(3.3–7.1)	3.4	(2.2–4.5)	4.5	(2.6–6.5)
4827	Peace Country	4.1	(1.2–7.0)	3.0	(1.6–4.3)	*8.1	(5.7–10.5)
B.C.		*5.9	(5.2–6.7)	3.5	(3.2–3.9)	*4.0	(3.6–4.4)
5911	East Kootenay	*		4.6	(2.6–6.5)	4.4	(1.8–6.9)
5912	Kootenay/Boundary	7.3	(2.1–12.5)	5.0	(2.8–7.2)	4.1	(1.7–6.6)
5913	Okanagan	6.3	(3.8–8.8)	3.9	(2.8–5.0)	5.1	(3.8–6.4)
5914	Thompson/Cariboo	*7.8	(5.3–10.3)	3.9	(2.8–5.1)	4.2	(2.6–5.8)
5921	Fraser East	6.2	(3.9–8.5)	4.0	(2.8–5.1)	5.2	(3.8–6.6)
5922	Fraser North	6.2	(3.7–8.6)	3.3	(2.1–4.4)	*2.6	(1.3–3.9)
5923	Fraser South	6.5	(4.5–8.6)	3.6	(2.7–4.6)	3.6	(2.6–4.6)
5931	Richmond	*		4.9	(2.8–7.0)	3.2	(1.0–5.4)
5932	Vancouver	5.9	(3.7–8.1)	3.2	(2.1–4.2)	*2.6	(1.3–3.9)
5933	North Shore	*		3.0	(1.6–4.4)	3.7	(2.3–5.1)
5941	South Vancouver Island	5.7	(3.1–8.4)	2.6	(1.3–3.8)	3.4	(2.0–4.7)
5942	Central Vancouver Island	7.1	(4.5–9.7)	2.9	(1.7–4.1)	*6.2	(4.9–7.5)
5943	North Vancouver Island	*		2.8	(0.7–4.8)	4.3	(2.0–6.6)
5951	Northwest	*		2.6	(0.7–4.4)	3.1	(1.3–6.9)
5952	Northern Interior	5.6	(1.8–9.5)	4.4	(2.9–5.9)	5.2	(2.9–7.4)
Y.T.		*		*6.9	(3.7–10.1)	*	
N.W.T.		*		2.7	(0.4–5.1)	*	
Nun.		**	** **	**	** **	**	** **
Canada		5.1		3.2		4.5	

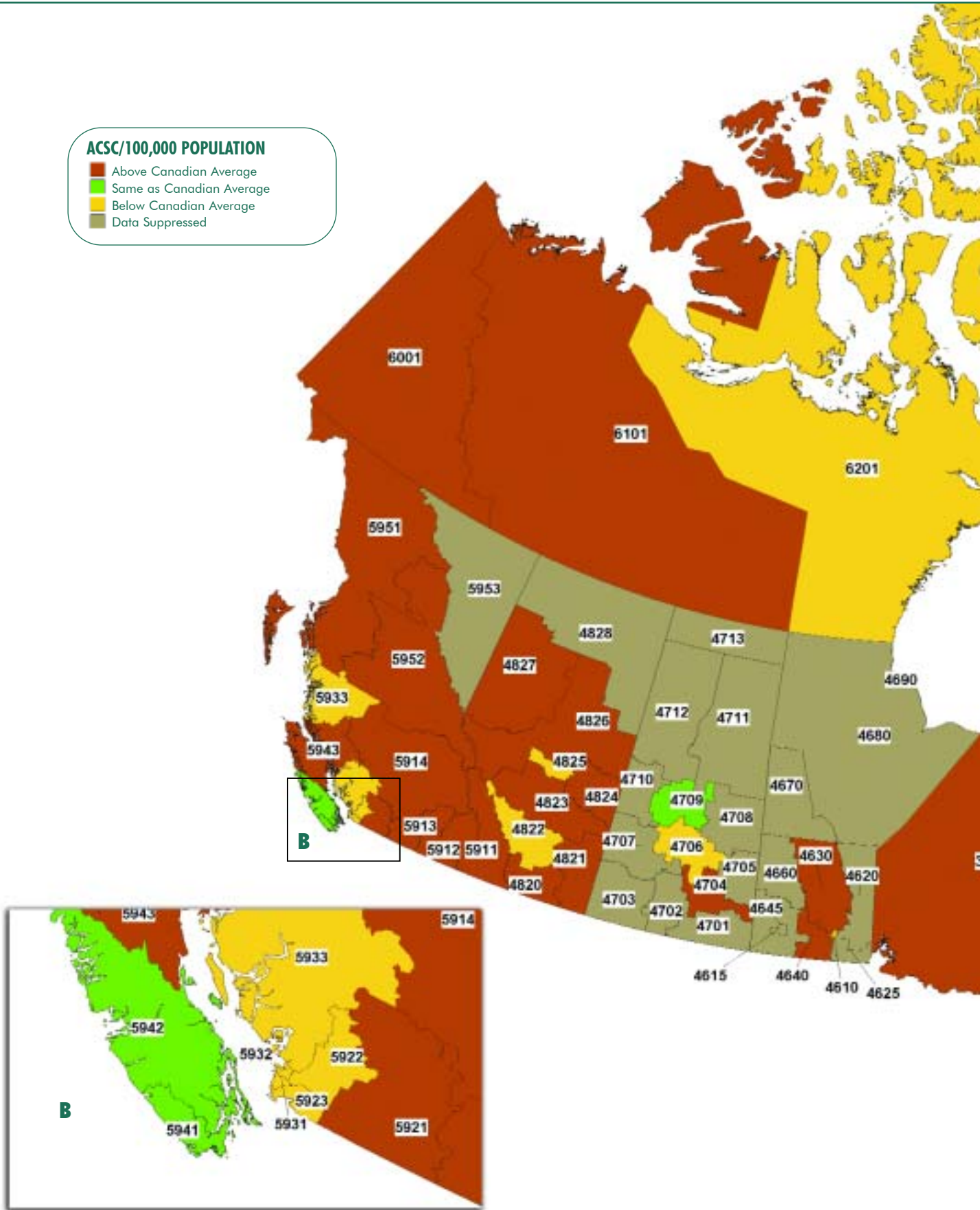
Map Code	Health Region	Hysterectomy Readmission Rate 2000–2001 to 2002–2003		Prostatectomy Readmission Rate 2000–2001 to 2002–2003	
		%	95% CI	%	95% CI
N.L.		+0.5	(0.2–0.9)	2.4	(1.2–3.5)
1001	St. John's area	0.9	(0.2–1.6)	3.7	(1.3–6.1)
1002	Eastern, N.L.	*		*	
1003	Central, N.L.	*		*	
1004	Western, N.L.	*		*	
P.E.I.		1.1	(0.4–1.8)	*4.1	(2.3–5.9)
N.S.		0.9	(0.7–1.2)	2.6	(1.9–3.2)
1201	Zone 1, N.S.	0.7	(0.3–1.6)	*	
1202	Zone 2, N.S.	*		*	
1203	Zone 3, N.S.	*		3.2	(1.2–5.2)
1204	Zone 4, N.S.	1.4	(0.5–2.2)	2.4	(0.9–3.9)
1205	Zone 5, N.S.	*		3.4	(2.0–4.9)
1206	Zone 6, N.S.	1.5	(1.0–1.9)	2.4	(1.2–3.5)
N.B.		0.8	(0.6–1.1)	2.4	(1.7–3.2)
1301	Region 1, N.B. (Moncton area)	0.9	(0.3–1.4)	*	
1302	Region 2, N.B. (Saint John area)	1.6	(1.0–2.3)	2.1	(0.7–3.5)
1303	Region 3, N.B. (Fredericton area)	1.2	(0.5–1.9)	*4.6	(2.8–6.5)
1306	Region 6, N.B. (Bathurst area)	*		*	
Que.		**	** **	**	** **
2401	Bas-Saint-Laurent	**	** **	**	** **
2402	Saguenay–Lac-Saint-Jean	**	** **	**	** **
2403	Région de Québec	**	** **	**	** **
2404	Mauricie et Centre-du-Québec	**	** **	**	** **
2405	Estrie	**	** **	**	** **
2406	Montréal-Centre	**	** **	**	** **
2407	Outaouais	**	** **	**	** **
2408	Abitibi-Témiscamingue	**	** **	**	** **
2409	Côte-Nord	**	** **	**	** **
2411	Gaspésie–Îles-de-la-Madeleine	**	** **	**	** **
2412	Chaudière-Appalaches	**	** **	**	** **
2413	Laval	**	** **	**	** **
2414	Lanaudière	**	** **	**	** **
2415	Laurentides	**	** **	**	** **
2416	Montérégie	**	** **	**	** **
Ont.		1.0	(0.9–1.1)	2.0	(1.8–2.2)
3501	Champlain (Ottawa area)	*1.4	(1.1–1.7)	1.5	(0.7–2.4)
3502	Southeastern Ontario	*1.7	(1.3–2.1)	1.6	(0.7–2.6)
3503	Durham, Haliburton, Kawartha and Pine Ridge	1.0	(0.7–1.3)	1.6	(0.8–2.3)
3504	Toronto	1.2	(0.9–1.5)	2.0	(1.6–2.4)
3505	Simcoe York	0.8	(0.5–1.2)	2.2	(1.6–2.9)
3506	Halton–Peel	0.7	(0.4–1.0)	2.7	(1.9–3.4)
3507	Waterloo–Wellington–Dufferin	1.0	(0.6–1.4)	2.2	(1.4–3.1)
3508	Hamilton	1.0	(0.5–1.4)	1.9	(0.9–2.8)
3509	Niagara	1.2	(0.7–1.6)	1.5	(0.6–2.4)
3510	Grand River (Brantford area)	0.8	(0.2–1.4)	2.7	(1.3–4.0)
3511	Thames Valley (London area)	1.0	(0.6–1.4)	2.5	(1.4–3.7)
3512	Essex Kent Lambton (Windsor area)	0.6	(0.3–1.0)	1.8	(0.9–2.6)
3513	Grey Bruce Huron and Perth	1.2	(0.6–1.7)	1.5	(0.3–2.7)
3514	Northern Shores	1.0	(0.4–1.5)	1.6	(0.2–3.0)
3515	ACMS (Sudbury area)	0.8	(0.5–1.2)	2.6	(1.4–3.8)
3516	Northwestern Ontario	0.8	(0.1–1.5)	3.1	(1.9–4.3)
Man.		**	** **	**	** **
4610	Winnipeg	**	** **	**	** **
4630	Interlake	**	** **	**	** **
4640	Central	**	** **	**	** **
Sask.		*1.4	(1.1–1.7)	2.3	(1.6–3.0)
4704	Regina	1.0	(0.3–1.6)	2.7	(1.2–4.2)
4706	Saskatoon	*1.8	(1.2–2.4)	2.7	(1.2–4.2)
4709	Prince Albert	*		*	
Alta.		*1.4	(1.2–1.5)	2.0	(1.5–2.6)
4820	Chinook	1.1	(0.4–1.9)	*	
4821	Palliser	*		*	
4822	Calgary	1.3	(1.0–1.6)	1.9	(1.0–2.8)
4823	David Thompson	*3.6	(3.0–4.1)	1.4	(0.6–3.3)
4824	East Central	1.6	(0.6–2.5)	*	
4825	Capital	0.6	(0.3–1.0)	2.0	(1.0–3.0)
4826	Aspen	1.7	(0.9–2.5)	*4.7	(2.1–7.4)
4827	Peace Country	*		*	
B.C.		1.0	(0.8–1.1)	1.7	(1.4–2.0)
5911	East Kootenay	*2.2	(1.1–3.2)	*4.7	(2.5–7.0)
5912	Kootenay/Boundary	*		1.8	(0.2–3.5)
5913	Okanagan	0.8	(0.3–1.3)	1.6	(0.5–2.7)
5914	Thompson/Cariboo	1.1	(0.6–1.7)	1.6	(0.3–2.9)
5921	Fraser East	1.3	(0.7–1.9)	1.2	(0.1–2.2)
5922	Fraser North	0.6	(0.2–1.1)	2.1	(1.3–2.9)
5923	Fraser South	0.6	(0.2–1.0)	1.2	(0.4–2.0)
5931	Richmond	*		*	
5932	Vancouver	0.7	(0.1–1.3)	1.9	(1.0–2.7)
5933	North Shore	0.8	(0.3–1.8)	2.0	(0.6–3.3)
5941	South Vancouver Island	1.0	(0.5–1.6)	2.2	(1.3–3.2)
5942	Central Vancouver Island	1.0	(0.5–1.6)	*	
5943	North Vancouver Island	*2.4	(1.5–3.3)	*	
5951	Northwest	*		*	
5952	Northern Interior	1.1	(0.3–1.9)	3.0	(0.8–5.1)
Y.T.		*		*	
N.W.T.		*		*	
Nun.		**	** **	**	** **
Canada		1.0		2.0	

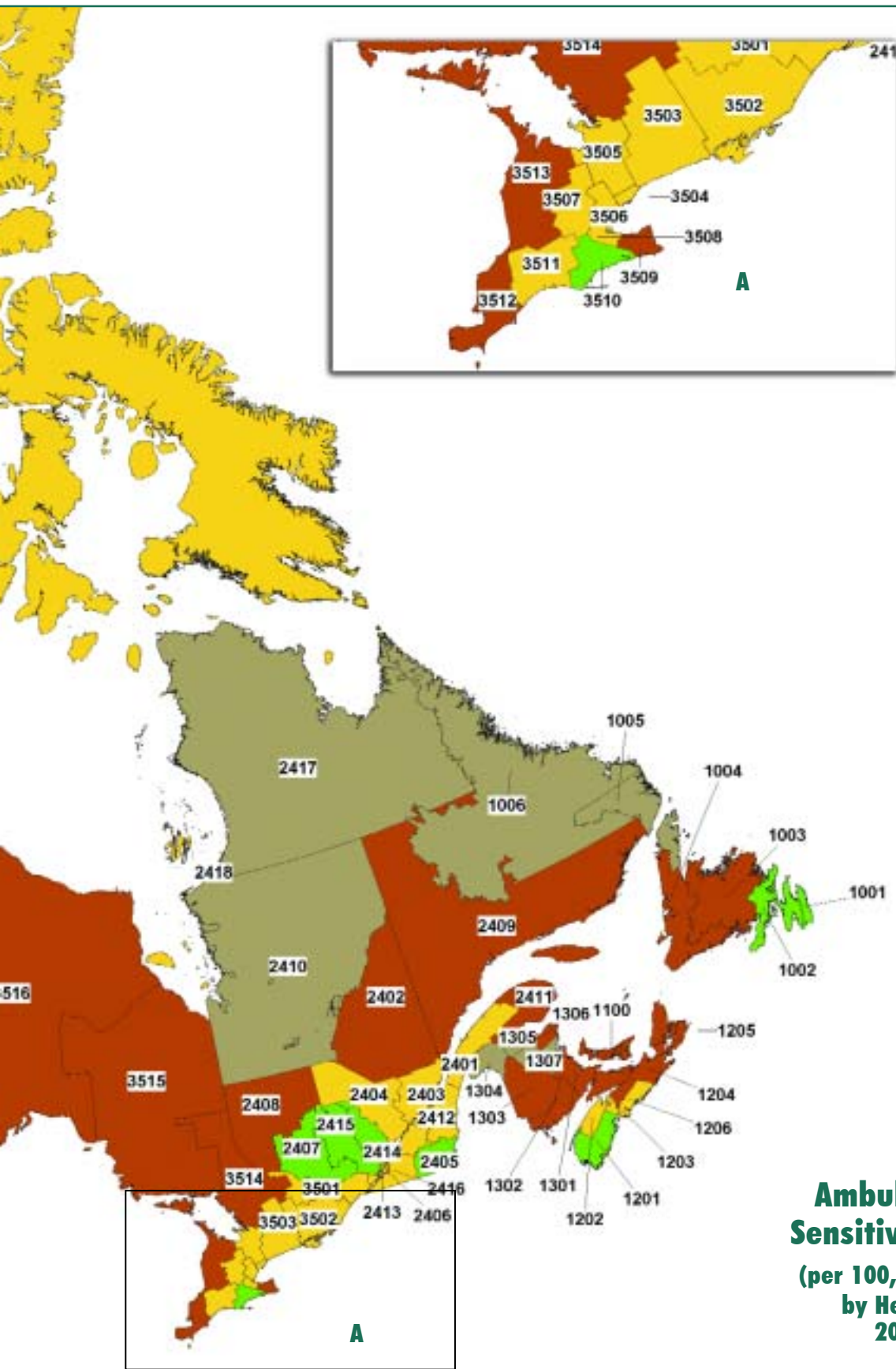
Map Code	Health Region	Ambulatory Care Sensitive Conditions Hospitalization 2001–2002		Pneumonia and Influenza Hospitalization 2001–2002	
		Age std rate/100,000	95% CI	Age std rate/100,000	95% CI
N.L.		*452	(433–470)	*999	(923–1075)
1001	St. John's area	349	(322–377)	711	(600–822)
1002	Eastern, N.L.	361	(327–395)	*1,043	(883–1,203)
1003	Central, N.L.	*476	(433–519)	*1,069	(900–1,238)
1004	Western, N.L.	*567	(516–617)	*1,060	(868–1,253)
P.E.I.		*888	(838–937)	*1,614	(1,439–1,789)
N.S.		355	(343–367)	*1,255	(1196–1314)
1201	Zone 1, N.S.	354	(321–388)	*1,092	(959–1,226)
1202	Zone 2, N.S.	*245	(212–279)	*1,460	(1,259–1,661)
1203	Zone 3, N.S.	*393	(355–431)	*1,419	(1,246–1,592)
1204	Zone 4, N.S.	*502	(457–547)	*1,499	(1,312–1,687)
1205	Zone 5, N.S.	*492	(454–529)	*1,510	(1,349–1,670)
1206	Zone 6, N.S.	*257	(240–273)	*925	(837–1,013)
N.B.		*560	(543–577)	*1,063	(1,001–1,124)
1301	Region 1, N.B. (Moncton area)	*394	(366–423)	833	(728–938)
1302	Region 2, N.B. (Saint John area)	*397	(368–426)	*1,076	(950–1,202)
1303	Region 3, N.B. (Fredericton area)	*580	(544–616)	*993	(863–1,122)
1306	Region 6, N.B. (Bathurst area)	*730	(671–788)	*1,213	(1,017–1,409)
Que.		*314	(310–318)	*482	(468–495)
2401	Bas-Saint-Laurent	*309	(285–334)	*595	(511–678)
2402	Saguenay–Lac-Saint-Jean	*536	(508–564)	*571	(491–652)
2403	Région de Québec	*285	(272–298)	*416	(375–456)
2404	Mauricie et Centre-du-Québec	*267	(252–282)	*365	(323–408)
2405	Estrie	344	(323–365)	*624	(550–699)
2406	Montréal-Centre	*270	(263–278)	*391	(369–413)
2407	Outaouais	327	(307–347)	*613	(528–698)
2408	Abitibi-Témiscamingue	*448	(414–482)	*594	(475–713)
2409	Côte-Nord	*523	(477–570)	804	(613–996)
2411	Gaspésie–Îles-de-la-Madeleine	*476	(434–519)	725	(594–856)
2412	Chaudière-Appalaches	*219	(204–234)	*576	(512–641)
2413	Laval	*251	(234–268)	*468	(405–531)
2414	Lanaudière	343	(324–362)	*543	(471–616)
2415	Laurentides	361	(344–379)	*650	(579–722)
2416	Montérégie	*321	(311–331)	*454	(421–488)
Ont.		*304	(301–307)	*741	(728–755)
3501	Champlain (Ottawa area)	*221	(212–230)	*677	(635–719)
3502	Southeastern Ontario	*298	(283–314)	*964	(898–1,030)
3503	Durham, Haliburton, Kawartha and Pine Ridge	*283	(271–295)	*830	(776–884)
3504	Toronto	*233	(227–239)	*591	(566–615)
3505	Simcoe York	*257	(247–266)	747	(699–795)
3506	Haltou-Peel	*240	(232–248)	*619	(576–661)
3507	Waterloo-Wellington-Dufferin	*247	(235–259)	*694	(638–750)
3508	Hamilton	*250	(237–264)	721	(661–781)
3509	Niagara	*452	(431–472)	*662	(603–720)
3510	Grand River (Brantford area)	355	(331–380)	766	(675–857)
3511	Thames Valley (London area)	*293	(279–306)	*608	(556–660)
3512	Essex Kent Lambton (Windsor area)	*402	(387–418)	*672	(619–725)
3513	Grey Bruce Huron and Perth	*474	(448–499)	*977	(892–1061)
3514	Northern Shores	*592	(559–625)	*1,127	(1,019–1,235)
3515	ACMS (Sudbury area)	*594	(570–618)	*1,032	(949–1,115)
3516	Northwestern Ontario	*678	(645–711)	*1,068	(958–1,178)
Man.		*440	(428–453)	*971	(924–1,018)
4610	Winnipeg	*292	(279–306)	*630	(581–680)
4630	Interlake	*572	(519–624)	*1,679	(1,445–1,913)
4640	Central	*495	(452–539)	*1,083	(916–1,251)
Sask.		*513	(499–527)	*1,350	(1,294–1,407)
4704	Regina	*539	(510–569)	*974	(872–1,075)
4706	Saskatoon	*292	(272–312)	*991	(892–1,089)
4709	Prince Albert	387	(343–430)	*1,215	(1,014–1,415)
Alta.		*427	(420–435)	*799	(768–829)
4820	Chinook	*601	(562–640)	861	(736–987)
4821	Palliser	*510	(465–555)	742	(601–884)
4822	Calgary	*282	(272–293)	*615	(567–663)
4823	David Thompson	*627	(599–656)	*1,165	(1,052–1,278)
4824	East Central	*813	(761–865)	*953	(814–1,093)
4825	Capital	*241	(231–251)	*548	(503–592)
4826	Aspen	*878	(834–922)	*1,342	(1,178–1,506)
4827	Peace Country	*1023	(964–1082)	*1,808	(1,550–2,066)
B.C.		*328	(322–333)	*863	(839–886)
5911	East Kootenay	*513	(462–564)	*1,353	(1,138–1,569)
5912	Kootenay/Boundary	*495	(445–544)	*956	(792–1,120)
5913	Okanagan	376	(353–399)	*860	(789–931)
5914	Thompson/Cariboo	*396	(369–424)	*1,239	(1,109–1,369)
5921	Fraser East	*380	(355–404)	*1,027	(924–1,130)
5922	Fraser North	*237	(223–250)	*858	(787–929)
5923	Fraser South	*245	(233–258)	742	(680–803)
5931	Richmond	*188	(167–209)	766	(649–883)
5932	Vancouver	*312	(297–328)	757	(697–817)
5933	North Shore	*281	(260–301)	710	(627–793)
5941	South Vancouver Island	348	(328–369)	*556	(500–612)
5942	Central Vancouver Island	363	(337–389)	*871	(784–958)
5943	North Vancouver Island	*487	(444–529)	*1,030	(866–1,195)
5951	Northwest	*705	(645–765)	*2,015	(1,655–2,375)
5952	Northern Interior	*429	(394–463)	*1,435	(1,215–1,656)
Y.T.		*520	(427–613)	*1,615	(1,001–2,230)
N.W.T.		*1,114	(996–1,232)	*2,566	(1,828–3,304)
Nun.		*243	(165–321)	1,444	(571–2,317)
Canada		346	(344–348)	768	(760–777)

Map Code	Health Region	Hip Fracture Hospitalization 2001–2002		In-Hospital Hip Fracture Rate 2000–2001 to 2002–2003	
		Age std rate/100,000	95% CI	Rate/1,000	95% CI
N.L.		557	(501–613)	*0.5	(0.3–0.8)
1001	St. John's area	506	(416–596)	0.5	(0.2–1.0)
1002	Eastern, N.L.	503	(394–612)	0.5	(0.2–1.1)
1003	Central, N.L.	522	(404–640)	0.5	(0.3–1.1)
1004	Western, N.L.	590	(444–735)	0.7	(0.3–1.4)
P.E.I.		580	(479–681)	0.8	(0.3–1.3)
N.S.		*495	(459–531)	*1.1	(1.0–1.3)
1201	Zone 1, N.S.	*448	(368–528)	1.1	(0.6–1.6)
1202	Zone 2, N.S.	*743	(602–885)	*2.0	(1.4–2.6)
1203	Zone 3, N.S.	569	(460–678)	*	
1204	Zone 4, N.S.	509	(404–614)	0.8	(0.3–1.3)
1205	Zone 5, N.S.	616	(516–716)	1.2	(0.8–1.7)
1206	Zone 6, N.S.	*324	(273–375)	1.2	(0.8–1.5)
N.B.		549	(506–592)	1.0	(0.9–1.2)
1301	Region 1, N.B. (Moncton area)	579	(494–665)	0.6	(0.3–1.0)
1302	Region 2, N.B. (Saint John area)	481	(401–562)	*1.9	(1.5–2.3)
1303	Region 3, N.B. (Fredericton area)	533	(440–627)	1.2	(0.8–1.6)
1306	Region 6, N.B. (Bathurst area)	*401	(292–510)	0.8	(0.1–1.4)
Que.		*491	(477–504)	**	** **
2401	Bas-Saint-Laurent	*466	(393–538)	**	** **
2402	Saguenay–Lac-Saint-Jean	*476	(400–551)	**	** **
2403	Région de Québec	512	(467–556)	**	** **
2404	Mauricie et Centre-du-Québec	*499	(450–548)	**	** **
2405	Estrie	*478	(414–542)	**	** **
2406	Montréal-Centre	*516	(491–540)	**	** **
2407	Outaouais	*470	(394–545)	**	** **
2408	Abitibi-Témiscamingue	*745	(611–880)	**	** **
2409	Côte-Nord	*360	(230–490)	**	** **
2411	Gaspésie–Îles-de-la-Madeleine	*399	(303–496)	**	** **
2412	Chaudière-Appalaches	*423	(368–477)	**	** **
2413	Laval	*426	(366–487)	**	** **
2414	Lanaudière	*477	(408–545)	**	** **
2415	Laurentides	514	(449–578)	**	** **
2416	Montérégie	*461	(427–494)	**	** **
Ont.		*573	(561–584)	*0.8	(0.7–0.8)
3501	Champlain (Ottawa area)	563	(525–600)	0.9	(0.8–1.1)
3502	Southeastern Ontario	*628	(575–681)	0.8	(0.6–1.1)
3503	Durham, Haliburton, Kawartha and Pine Ridge	*599	(553–644)	*0.6	(0.4–0.8)
3504	Toronto	*486	(464–508)	*0.7	(0.5–0.8)
3505	Simcoe York	*614	(570–658)	0.8	(0.6–1.0)
3506	Haltim–Peel	*511	(472–549)	0.7	(0.5–0.9)
3507	Waterloo–Wellington–Dufferin	578	(527–629)	0.7	(0.4–0.9)
3508	Hamilton	546	(494–597)	0.8	(0.6–1.1)
3509	Niagara	523	(471–574)	0.6	(0.3–0.9)
3510	Grand River (Brantford area)	536	(461–611)	0.9	(0.5–1.3)
3511	Thames Valley (London area)	*605	(555–655)	0.9	(0.7–1.1)
3512	Essex Kent Lambton (Windsor area)	535	(488–581)	*0.6	(0.4–0.8)
3513	Grey Bruce Huron and Perth	*754	(681–827)	1.0	(0.7–1.3)
3514	Northern Shores	*736	(649–823)	0.8	(0.5–1.1)
3515	ACMS (Sudbury area)	584	(521–646)	0.7	(0.5–1.0)
3516	Northwestern Ontario	534	(457–612)	1.1	(0.7–1.4)
Man.		537	(503–570)	**	** **
4610	Winnipeg	*416	(377–455)	**	** **
4630	Interlake	*794	(634–955)	**	** **
4640	Central	635	(513–758)	**	** **
Sask.		588	(553–624)	0.7	(0.6–0.9)
4704	Regina	559	(485–632)	0.8	(0.4–1.1)
4706	Saskatoon	*456	(393–518)	0.6	(0.3–0.9)
4709	Prince Albert	458	(344–573)	1.3	(0.7–2.0)
Alta.		570	(544–595)	*1.1	(1.0–1.3)
4820	Chinook	*379	(301–458)	1.0	(0.6–1.4)
4821	Palliser	636	(505–766)	*1.7	(1.1–2.2)
4822	Calgary	575	(530–621)	*1.3	(1.1–1.5)
4823	David Thompson	*676	(592–760)	1.1	(0.7–1.4)
4824	East Central	646	(538–754)	*1.6	(1.2–2.0)
4825	Capital	*502	(459–544)	0.9	(0.7–1.2)
4826	Aspen	531	(429–633)	1.3	(0.9–1.8)
4827	Peace Country	*785	(617–953)	0.8	(0.2–1.4)
B.C.		*608	(589–628)	*1.1	(1.0–1.2)
5911	East Kootenay	*907	(733–1,081)	1.4	(0.8–2.0)
5912	Kootenay/Boundary	*831	(682–980)	1.0	(0.4–1.5)
5913	Okanagan	544	(489–599)	1.1	(0.8–1.4)
5914	Thompson/Cariboo	*777	(673–880)	1.2	(0.7–1.6)
5921	Fraser East	580	(504–655)	0.7	(0.3–1.0)
5922	Fraser North	*622	(564–681)	1.1	(0.9–1.4)
5923	Fraser South	*644	(589–700)	*1.5	(1.3–1.8)
5931	Richmond	556	(457–655)	1.2	(0.6–1.7)
5932	Vancouver	552	(504–601)	1.1	(0.8–1.3)
5933	North Shore	624	(549–699)	0.8	(0.4–1.1)
5941	South Vancouver Island	*405	(359–452)	1.0	(0.8–1.3)
5942	Central Vancouver Island	615	(543–687)	0.9	(0.5–1.2)
5943	North Vancouver Island	*788	(645–932)	*1.7	(1.2–2.3)
5951	Northwest	*950	(698–1,202)	*1.9	(1.0–2.8)
5952	Northern Interior	*767	(601–932)	1.3	(0.7–1.9)
Y.T.		604	(205–1,002)	*	
N.W.T.		660	(270–1,051)	*	
Nun.		*		*	
Canada		554	(547–561)	0.9	

ACSC/100,000 POPULATION

- Above Canadian Average
- Same as Canadian Average
- Below Canadian Average
- Data Suppressed





Ambulatory Care Sensitive Conditions
 (per 100,000 population)
 by Health Region
 2001-2002

Source: Canadian Institute for Health Information

Map Code	Health Region	Caesarean Sections 2001–2002		Vaginal Birth After Caesarean 2001–2002	
		%	95% CI	%	95% CI
N.L.		26.6	(25.3–27.9)	12.5	(9.5–15.5)
1001	St. John's area	26.2	(24.2–28.3)	14.4	(9.5–19.2)
1002	Eastern, N.L.	31.5	(28.2–34.8)	13.5	(6.7–20.4)
1003	Central, N.L.	24.8	(21.8–27.9)	7.0	(1.6–12.4)
1004	Western, N.L.	26.6	(23.2–29.9)	12.3	(3.8–20.8)
P.E.I.		27.9	(25.5–30.3)	24.6	(18.0–31.1)
N.S.		25.3	(24.4–26.2)	24.0	(21.3–26.7)
1201	Zone 1, N.S.	25.3	(22.6–27.9)	22.9	(14.8–30.9)
1202	Zone 2, N.S.	20.8	(17.9–23.8)	25.0	(15.0–35.0)
1203	Zone 3, N.S.	24.9	(22.2–27.5)	22.4	(15.1–29.7)
1204	Zone 4, N.S.	28.1	(25.1–31.1)	9.7	(3.7–15.7)
1205	Zone 5, N.S.	24.1	(21.6–26.6)	32.1	(24.1–40.1)
1206	Zone 6, N.S.	26.1	(24.7–27.4)	25.3	(21.3–29.3)
N.B.		26.6	(25.6–27.6)	14.3	(11.8–16.8)
1301	Region 1, N.B. (Moncton area)	25.1	(23.1–27.2)	12.3	(7.3–17.4)
1302	Region 2, N.B. (Saint John area)	25.1	(23.1–27.1)	25.3	(19.1–31.4)
1303	Region 3, N.B. (Fredericton area)	27.2	(25.1–29.3)	10.0	(5.9–14.1)
1306	Region 6, N.B. (Bathurst area)	29.8	(26.3–33.2)	19.6	(8.7–30.5)
Que.		19.5	(19.2–19.8)	30.6	(29.5–31.8)
2401	Bas-Saint-Laurent	19.8	(17.8–21.7)	26.9	(18.9–34.9)
2402	Saguenay–Lac-Saint-Jean	16.8	(15.3–18.2)	37.0	(30.8–43.2)
2403	Région de Québec	19.7	(18.6–20.7)	29.2	(25.1–33.3)
2404	Mauricie et Centre-du-Québec	19.5	(18.2–20.7)	19.8	(15.4–24.2)
2405	Estrie	15.0	(13.7–16.3)	47.7	(40.2–55.1)
2406	Montréal-Centre	21.0	(20.4–21.6)	29.3	(27.2–31.3)
2407	Outaouais	20.6	(19.1–22.0)	27.4	(22.0–32.8)
2408	Abitibi-Témiscamingue	17.2	(15.3–19.1)	50.0	(41.0–59.0)
2409	Côte-Nord	20.4	(17.9–22.9)	27.5	(17.7–37.3)
2411	Gaspésie–Îles-de-la-Madeleine	22.5	(19.4–25.6)	29.9	(18.9–40.8)
2412	Chaudière-Appalaches	22.1	(20.7–23.4)	26.4	(21.8–30.9)
2413	Laval	20.3	(19.0–21.6)	21.8	(17.4–26.2)
2414	Lanaudière	19.1	(17.8–20.4)	39.3	(34.0–44.6)
2415	Laurentides	16.9	(15.9–18.0)	30.7	(26.0–35.4)
2416	Montérégie	19.1	(18.4–19.7)	32.6	(29.9–35.2)
Ont.		22.9	(22.7–23.1)	24.9	(24.2–25.6)
3501	Champlain (Ottawa area)	22.5	(21.7–23.2)	26.2	(23.7–28.7)
3502	Southeastern Ontario	24.2	(23.0–25.4)	21.0	(17.5–24.5)
3503	Durham, Haliburton, Kawartha and Pine Ridge	25.8	(24.8–26.7)	22.4	(19.9–24.9)
3504	Toronto	24.0	(23.5–24.5)	23.4	(21.9–24.8)
3505	Simcoe York	23.0	(22.3–23.7)	20.6	(18.6–22.7)
3506	Haltim–Peel	22.5	(21.9–23.1)	22.7	(20.9–24.5)
3507	Waterloo–Wellington–Dufferin	21.7	(20.8–22.6)	29.4	(26.4–32.4)
3508	Hamilton	21.6	(20.5–22.7)	28.6	(25.0–32.2)
3509	Niagara	22.8	(21.5–24.0)	20.0	(16.2–23.7)
3510	Grand River (Brantford area)	19.2	(17.6–20.8)	32.5	(26.8–38.3)
3511	Thames Valley (London area)	18.9	(18.0–19.9)	38.1	(34.4–41.8)
3512	Essex Kent Lambton (Windsor area)	22.4	(21.4–23.4)	33.1	(29.7–36.5)
3513	Grey Bruce Huron and Perth	20.1	(18.6–21.6)	29.6	(23.7–35.5)
3514	Northern Shores	28.7	(26.7–30.7)	15.1	(10.8–19.3)
3515	ACMS (Sudbury area)	24.0	(22.6–25.3)	14.7	(11.1–18.3)
3516	Northwestern Ontario	21.9	(20.3–23.4)	34.4	(29.4–39.3)
Man.		18.2	(17.6–18.9)	32.3	(29.9–34.7)
4610	Winnipeg	18.3	(17.4–19.2)	32.7	(29.3–36.1)
4630	Interlake	17.1	(14.6–19.6)	33.3	(23.6–43.1)
4640	Central	20.2	(18.0–22.3)	30.5	(23.4–37.5)
Sask.		18.4	(17.7–19.1)	35.8	(33.1–38.4)
4704	Regina	15.2	(13.9–16.6)	33.6	(27.6–39.6)
4706	Saskatoon	20.2	(18.9–21.6)	40.2	(35.0–45.4)
4709	Prince Albert	14.2	(12.1–16.4)	57.6	(47.5–67.7)
Alta.		22.5	(22.1–23.0)	30.2	(28.8–31.6)
4820	Chinook	20.9	(19.1–22.8)	32.1	(26.0–38.3)
4821	Palliser	18.5	(16.3–20.7)	29.5	(21.4–37.6)
4822	Calgary	23.6	(22.8–24.3)	31.6	(29.2–34.0)
4823	David Thompson	22.9	(21.5–24.2)	27.2	(22.8–31.5)
4824	East Central	27.6	(24.9–30.2)	21.6	(15.1–28.1)
4825	Capital	21.9	(21.1–22.7)	32.0	(29.3–34.6)
4826	Aspen	20.8	(19.1–22.4)	32.3	(26.5–38.1)
4827	Peace Country	22.1	(20.3–24.0)	17.4	(12.2–22.6)
B.C.		27.1	(26.7–27.6)	23.6	(22.3–24.8)
5911	East Kootenay	18.9	(15.8–22.0)	31.3	(19.9–42.6)
5912	Kootenay/Boundary	24.7	(21.2–28.3)	19.1	(9.8–28.5)
5913	Okanagan	24.3	(22.7–26.0)	27.5	(22.4–32.5)
5914	Thompson/Cariboo	30.4	(28.3–32.5)	22.5	(17.5–27.5)
5921	Fraser East	24.8	(23.2–26.4)	27.4	(22.7–32.2)
5922	Fraser North	27.5	(26.3–28.6)	20.2	(17.0–23.5)
5923	Fraser South	27.4	(26.4–28.5)	25.0	(22.0–28.0)
5931	Richmond	30.5	(28.2–32.8)	27.4	(21.0–33.7)
5932	Vancouver	27.4	(26.3–28.6)	25.0	(21.4–28.6)
5933	North Shore	27.9	(26.0–29.8)	16.3	(11.6–21.0)
5941	South Vancouver Island	29.4	(27.7–31.2)	25.9	(21.2–30.7)
5942	Central Vancouver Island	27.2	(25.2–29.1)	*	
5943	North Vancouver Island	25.4	(22.7–28.1)	21.7	(14.2–29.3)
5951	Northwest	25.8	(23.1–28.6)	23.8	(15.7–32.0)
5952	Northern Interior	28.6	(26.4–30.9)	19.7	(13.7–25.6)
Y.T.		25.9	(21.2–30.7)	33.3	(15.6–51.1)
N.W.T.		23.3	(20.0–26.6)	19.7	(10.1–29.3)
Nun.		9.2	(6.8–11.5)	60.7	(42.6–78.8)
Canada		22.5	(22.3–22.6)	26.7	(26.2–27.2)

Map Code	Health Region	Hip Replacement 2001–2002		Knee Replacement 2001–2002		Hysterectomy 2001–2002	
		Age std rate/100,000	95% CI	Age std rate/100,000	95% CI	Age std rate/100,000	95% CI
N.L.		*38.5	(33.4–43.5)	*44.2	(38.7–49.7)	*500	(470–531)
1001	St. John's area	*38.9	(30.2–47.6)	*34.2	(25.7–42.7)	414	(367–460)
1002	Eastern, N.L.	*34.0	(24.0–44.1)	*36.4	(25.9–46.9)	*605	(534–675)
1003	Central, N.L.	*34.9	(24.7–45.0)	*53.4	(40.6–66.2)	402	(341–462)
1004	Western, N.L.	49.4	(35.4–63.4)	56.9	(42.1–71.7)	*632	(545–718)
P.E.I.		63.8	(51.3–76.4)	70.7	(57.5–84.0)	*595	(528–662)
N.S.		61.5	(56.8–66.1)	*82.5	(77.0–87.9)	*528	(504–552)
1201	Zone 1, N.S.	51.2	(40.5–61.8)	69.3	(56.6–81.9)	*609	(537–680)
1202	Zone 2, N.S.	*78.9	(62.2–95.6)	*93.1	(74.5–111.6)	*631	(540–723)
1203	Zone 3, N.S.	65.5	(51.5–79.6)	83.2	(67.8–98.6)	*752	(666–838)
1204	Zone 4, N.S.	61.7	(48.1–75.4)	59.0	(45.3–72.7)	*545	(466–624)
1205	Zone 5, N.S.	65.5	(53.5–77.4)	*113.7	(97.9–129.6)	*569	(502–636)
1206	Zone 6, N.S.	56.7	(49.1–64.2)	76.9	(67.9–85.9)	407	(376–439)
N.B.		59.4	(54.2–64.5)	*80.5	(74.4–86.5)	*655	(625–685)
1301	Region 1, N.B. (Moncton area)	55.1	(45.3–65.0)	73.9	(62.5–85.3)	*680	(619–741)
1302	Region 2, N.B. (Saint John area)	*69.0	(57.6–80.5)	*85.1	(72.3–98.0)	*515	(461–569)
1303	Region 3, N.B. (Fredericton area)	*71.7	(59.2–84.1)	*113.0	(97.3–128.6)	411	(361–460)
1306	Region 6, N.B. (Bathurst area)	*41.0	(28.5–53.5)	*38.0	(25.6–50.5)	*981	(873–1088)
Que.		*39.0	(37.6–40.3)	*39.1	(37.7–40.4)	*382	(375–388)
2401	Bas-Saint-Laurent	*46.7	(38.2–55.2)	*46.8	(38.5–55.1)	*659	(601–716)
2402	Saguenay–Lac-Saint-Jean	*38.0	(31.2–44.8)	63.0	(54.3–71.7)	*712	(661–762)
2403	Région de Québec	*35.0	(30.9–39.2)	*34.6	(30.5–38.7)	*427	(403–452)
2404	Mauricie et Centre-du-Québec	*42.7	(37.5–47.9)	*47.3	(41.9–52.7)	*482	(450–514)
2405	Estrie	*38.2	(31.7–44.7)	*40.2	(33.6–46.9)	*460	(421–500)
2406	Montréal-Centre	*39.0	(36.4–41.5)	*28.2	(26.1–30.4)	*237	(226–248)
2407	Outaouais	*38.3	(31.5–45.1)	*61.4	(52.6–70.3)	*294	(265–323)
2408	Abitibi-Témiscamingue	53.2	(41.6–64.7)	*30.9	(22.1–39.6)	*551	(489–612)
2409	Côte-Nord	*24.0	(14.5–33.6)	*45.6	(31.4–59.7)	*499	(430–568)
2411	Gaspésie-Îles-de-la-Madeleine	*27.1	(17.6–36.6)	*38.6	(27.8–49.3)	*497	(430–565)
2412	Chaudière-Appalaches	*44.1	(37.9–50.3)	*52.1	(45.3–58.9)	*532	(496–569)
2413	Laval	*39.0	(33.0–45.1)	*38.9	(32.9–44.9)	*287	(260–314)
2414	Lanaudière	*33.7	(28.0–39.4)	*37.6	(31.6–43.6)	*338	(310–366)
2415	Laurentides	*40.0	(34.4–45.6)	*34.2	(29.0–39.5)	*361	(335–388)
2416	Montérégie	*38.3	(35.1–41.6)	*40.8	(37.4–44.2)	387	(370–404)
Ont.		*63.3	(62.0–64.7)	*86.5	(84.9–88.1)	*368	(363–374)
3501	Champlain (Ottawa area)	*61.5	(57.0–66.0)	*85.8	(80.5–91.1)	382	(364–400)
3502	Southeastern Ontario	*69.1	(62.8–75.4)	*96.9	(89.4–104.3)	*419	(390–448)
3503	Durham, Haliburton, Kawartha and Pine Ridge	*73.0	(67.5–78.5)	*96.7	(90.3–103.0)	*499	(474–524)
3504	Toronto	*51.9	(49.3–54.5)	67.8	(64.8–70.8)	*224	(215–233)
3505	Simcoe York	54.9	(50.6–59.2)	*82.1	(76.8–87.5)	*309	(294–325)
3506	Halton–Peel	*61.8	(57.4–66.2)	*86.5	(81.2–91.7)	*298	(284–312)
3507	Waterloo–Wellington–Dufferin	*68.3	(62.1–74.4)	*83.4	(76.6–90.3)	*421	(397–446)
3508	Hamilton	*72.9	(66.0–79.7)	*84.5	(77.2–91.9)	*361	(334–387)
3509	Niagara	*65.9	(59.2–72.5)	*111.1	(102.5–119.7)	*532	(497–568)
3510	Grand River (Brantford area)	66.0	(56.4–75.6)	*86.9	(76.0–97.7)	*504	(457–551)
3511	Thames Valley (London area)	*69.6	(63.3–75.8)	*79.7	(72.9–86.4)	406	(380–432)
3512	Essex Kent Lambton (Windsor area)	*74.2	(67.9–80.4)	*90.6	(83.7–97.6)	*506	(478–535)
3513	Grey Bruce Huron and Perth	*76.8	(68.1–85.6)	*103.1	(93.2–113.1)	*430	(390–470)
3514	Northern Shores	62.0	(53.1–70.9)	*86.2	(75.9–96.5)	*697	(637–757)
3515	ACMS (Sudbury area)	54.4	(48.0–60.8)	*91.3	(83.0–99.6)	*656	(615–697)
3516	Northwestern Ontario	65.4	(55.8–75.1)	*135.5	(121.7–149.3)	357	(318–396)
Man.		*65.6	(61.1–70.1)	*94.7	(89.4–100.1)	*433	(413–452)
4610	Winnipeg	*65.2	(59.3–71.1)	*93.7	(86.6–100.8)	386	(362–410)
4630	Interlake	70.1	(53.4–86.9)	*109.9	(88.9–130.9)	467	(388–547)
4640	Central	66.9	(51.5–82.3)	80.4	(63.5–97.4)	395	(328–462)
Sask.		*68.5	(63.7–73.2)	*84.1	(78.8–89.4)	*432	(411–453)
4704	Regina	63.4	(54.0–72.9)	80.0	(69.3–90.8)	354	(316–392)
4706	Saskatoon	*68.9	(59.4–78.3)	*94.8	(83.7–105.8)	391	(354–429)
4709	Prince Albert	61.9	(45.4–78.5)	63.9	(47.2–80.6)	*239	(178–301)
Alta.		*71.6	(68.5–74.7)	*86.6	(83.1–90.1)	386	(375–398)
4820	Chinook	*84.7	(70.2–99.2)	*116.5	(99.6–133.4)	*495	(434–556)
4821	Palliser	61.5	(46.7–76.4)	84.5	(67.1–101.9)	*534	(456–612)
4822	Calgary	*67.8	(62.5–73.1)	72.8	(67.2–78.4)	*340	(322–357)
4823	David Thompson	*88.7	(77.7–99.6)	*101.4	(89.6–113.2)	*457	(417–497)
4824	East Central	67.7	(53.8–81.7)	80.3	(65.2–95.3)	434	(369–500)
4825	Capital	*65.9	(60.7–71.2)	*87.5	(81.4–93.7)	375	(355–394)
4826	Aspen	63.3	(51.3–75.4)	*87.3	(73.1–101.5)	407	(356–458)
4827	Peace Country	*111.3	(90.0–132.6)	*117.8	(95.7–139.9)	388	(328–447)
B.C.		57.5	(55.4–59.7)	*61.8	(59.5–64.1)	*343	(334–351)
5911	East Kootenay	*79.2	(61.2–97.3)	*96.2	(76.6–115.8)	*528	(444–612)
5912	Kootenay/Boundary	67.0	(51.6–82.5)	56.4	(42.0–70.8)	*483	(406–561)
5913	Okanagan	*72.3	(64.6–80.0)	*87.3	(78.9–95.7)	*468	(429–507)
5914	Thompson/Cariboo	*75.6	(64.7–86.4)	*96.3	(84.3–108.4)	*555	(503–607)
5921	Fraser East	62.2	(53.1–71.3)	78.1	(67.8–88.4)	422	(380–464)
5922	Fraser North	*46.1	(40.4–51.8)	*52.6	(46.4–58.8)	*297	(274–319)
5923	Fraser South	*50.0	(44.4–55.7)	*60.6	(54.4–66.8)	*346	(322–370)
5931	Richmond	*31.6	(23.3–39.8)	*37.6	(28.6–46.7)	*212	(179–244)
5932	Vancouver	*35.2	(30.5–39.8)	*29.6	(25.3–34.0)	*198	(180–216)
5933	North Shore	*66.4	(57.5–75.4)	*56.3	(48.1–64.6)	*203	(177–229)
5941	South Vancouver Island	62.3	(55.0–69.7)	*41.4	(35.6–47.2)	362	(331–394)
5942	Central Vancouver Island	61.0	(52.6–69.4)	*81.3	(71.7–90.8)	*502	(454–549)
5943	North Vancouver Island	*77.8	(62.3–93.4)	77.1	(62.0–92.1)	432	(369–495)
5951	Northwest	*31.0	(17.7–44.4)	*28.4	(15.8–41.0)	*286	(227–346)
5952	Northern Interior	*74.7	(59.3–90.0)	85.5	(68.5–102.4)	401	(348–455)
Y.T.		60.3	(24.7–95.8)	77.3	(38.3–116.4)	448	(331–566)
N.W.T.		50.6	(22.8–78.5)	93.6	(49.8–137.3)	*247	(159–334)
Nun.		54.5	(12.1–97.0)	*153.9	(71.8–236.1)	*231	(108–353)
Canada		56.9	(56.1–57.7)	70.5	(69.6–71.4)	389	(385–392)

COMMUNITY AND HEALTH SYSTEM CHARACTERISTICS

Map Code	Health Region	Bypass Surgery 2001–2002		General/Family Physicians 2001		Certified Specialists 2001	
		Age std rate/100,000	95% CI	Rate/100,000	95% CI	Rate/100,000	95% CI
N.L.		*149.4	(137.8–161.0)	112	(103–121)	65	(58–72)
1001	St. John's area	*158.1	(137.1–179.0)	125	(109–142)	155	(137–173)
1002	Eastern, N.L.	*157.6	(132.3–182.9)	96	(78–113)	7	(2–11)
1003	Central, N.L.	*127.3	(104.4–150.1)	103	(83–122)	24	(15–33)
1004	Western, N.L.	*135.6	(109.0–162.3)	114	(92–137)	27	(16–38)
P.E.I.		*93.6	(75.7–111.5)	83	(68–98)	54	(42–66)
N.S.		*123.7	(115.9–131.5)	102	(95–108)	98	(92–105)
1201	Zone 1, N.S.	*130.8	(110.4–151.1)	84	(68–100)	41	(30–52)
1202	Zone 2, N.S.	90.7	(69.1–112.3)	86	(67–106)	65	(48–82)
1203	Zone 3, N.S.	*132.0	(108.9–155.2)	83	(66–100)	31	(20–41)
1204	Zone 4, N.S.	95.0	(74.5–115.5)	81	(63–98)	43	(30–56)
1205	Zone 5, N.S.	*135.5	(115.1–155.9)	96	(79–112)	58	(45–70)
1206	Zone 6, N.S.	*126.0	(112.7–139.2)	123	(112–134)	170	(157–183)
N.B.		*84.6	(77.3–91.9)	92	(86–99)	63	(58–69)
1301	Region 1, N.B. (Moncton area)	*75.4	(61.9–89.0)	91	(77–104)	81	(68–94)
1302	Region 2, N.B. (Saint John area)	99.6	(83.1–116.1)	90	(76–104)	81	(68–94)
1303	Region 3, N.B. (Fredericton area)	*77.5	(62.3–92.8)	87	(73–101)	58	(47–70)
1306	Region 6, N.B. (Bathurst area)	83.0	(61.9–104.2)	93	(72–113)	40	(27–54)
Que.		*100.6	(98.1–103.1)	106	(104–108)	108	(106–110)
2401	Bas-Saint-Laurent	99.6	(85.3–113.9)	115	(100–129)	72	(61–84)
2402	Saguenay–Lac-Saint-Jean	84.5	(72.9–96.1)	95	(84–106)	64	(55–74)
2403	Région de Québec	*106.4	(97.9–114.8)	148	(138–157)	174	(164–184)
2404	Mauricie et Centre-du-Québec	*104.7	(95.3–114.2)	81	(73–89)	65	(58–73)
2405	Estrie	104.3	(91.7–116.8)	128	(115–141)	122	(109–134)
2406	Montréal-Centre	*87.1	(82.6–91.7)	120	(115–125)	212	(205–218)
2407	Ouhaouais	89.0	(76.7–101.4)	87	(77–98)	53	(45–61)
2408	Abitibi–Témiscamingue	88.1	(71.2–104.9)	102	(86–118)	58	(46–70)
2409	Côte-Nord	114.4	(89.5–139.2)	134	(112–156)	47	(34–60)
2411	Gaspésie–Îles-de-la-Madeleine	*134.6	(111.2–157.9)	154	(130–179)	56	(42–71)
2412	Chaudière–Appalaches	97.5	(86.6–108.3)	99	(89–109)	56	(48–63)
2413	Laval	98.6	(87.5–109.8)	88	(78–97)	69	(61–78)
2414	Lanaudière	*125.3	(112.7–137.8)	80	(71–89)	43	(37–49)
2415	Laurentides	91.8	(82.0–101.6)	91	(82–99)	43	(37–49)
2416	Montréal	*113.0	(106.6–119.5)	91	(86–96)	60	(56–64)
Ont.		*97.4	(95.4–99.4)	85	(84–87)	95	(93–97)
3501	Champlain (Ottawa area)	*86.2	(79.9–92.5)	108	(102–114)	134	(127–141)
3502	Southeastern Ontario	*120.1	(110.2–130.0)	98	(89–107)	100	(92–109)
3503	Durham, Haliburton, Kawartha and Pine Ridge	*116.7	(108.5–124.9)	65	(60–71)	47	(43–52)
3504	Toronto	*81.4	(77.4–85.3)	112	(108–116)	167	(162–172)
3505	Simcoe York	*105.4	(98.4–112.4)	70	(65–74)	48	(44–52)
3506	Halton–Peel	*107.1	(100.4–113.8)	69	(65–73)	52	(48–56)
3507	Waterloo–Wellington–Dufferin	96.8	(88.3–105.4)	74	(68–80)	53	(48–58)
3508	Hamilton	*112.2	(102.1–122.3)	87	(79–95)	164	(153–175)
3509	Niagara	89.7	(80.4–98.9)	62	(54–69)	58	(50–65)
3510	Grand River (Brantford area)	87.8	(74.8–100.8)	59	(49–69)	35	(27–42)
3511	Thames Valley (London area)	*83.4	(75.2–91.7)	85	(78–93)	141	(131–150)
3512	Essex Kent Lambton (Windsor area)	*86.5	(78.4–94.5)	57	(51–63)	54	(48–60)
3513	Grey Bruce Huron and Perth	*80.4	(70.0–90.9)	74	(64–83)	37	(30–44)
3514	Northern Shores	105.8	(92.2–119.5)	98	(85–111)	50	(41–59)
3515	ACMS (Sudbury area)	*118.5	(107.4–129.6)	81	(73–90)	61	(54–69)
3516	Northwestern Ontario	96.3	(82.6–110.1)	93	(81–105)	52	(43–61)
Man.		90.9	(84.6–97.2)	94	(88–100)	88	(83–93)
4610	Winnipeg	*84.8	(76.6–92.9)	100	(93–108)	144	(135–153)
4630	Interlake	94.7	(71.8–117.6)	74	(55–93)	18	(8–27)
4640	Central	78.4	(58.3–98.5)	77	(60–95)	11	(5–18)
Sask.		96.9	(90.1–103.7)	93	(87–99)	59	(55–64)
4704	Regina	*141.4	(124.5–158.4)	106	(93–119)	76	(65–87)
4706	Saskatoon	*58.4	(48.1–68.8)	106	(94–118)	126	(113–139)
4709	Prince Albert	79.1	(56.7–101.4)	98	(76–121)	29	(17–41)
Alta.		*87.0	(83.0–91.1)	88	(85–91)	80	(77–84)
4820	Chinook	105.8	(86.8–124.8)	90	(75–106)	54	(42–66)
4821	Palliser	*67.3	(48.7–85.9)	69	(53–86)	41	(28–53)
4822	Calgary	88.2	(81.0–95.3)	91	(85–96)	100	(94–106)
4823	David Thompson	92.3	(79.3–105.4)	81	(71–92)	29	(23–36)
4824	East Central	*62.8	(46.9–78.7)	82	(65–99)	7	(2–12)
4825	Capital	*81.9	(74.9–88.8)	95	(89–101)	117	(111–124)
4826	Aspen	90.6	(73.7–107.5)	78	(65–91)	4	(1–7)
4827	Peace Country	110.0	(85.3–134.8)	71	(56–85)	19	(12–27)
B.C.		*72.7	(69.8–75.6)	108	(105–112)	89	(86–92)
5911	East Kootenay	75.2	(54.5–95.9)	119	(95–143)	30	(18–42)
5912	Kootenay/Boundary	*62.7	(44.9–80.6)	127	(103–152)	49	(33–64)
5913	Okanagan	*71.4	(62.3–80.4)	104	(93–115)	79	(69–89)
5914	Thompson/Cariboo	*63.3	(51.9–74.8)	94	(81–107)	46	(37–55)
5921	Fraser East	*64.1	(53.1–75.1)	80	(69–91)	43	(34–51)
5922	Fraser North	*74.4	(65.7–83.1)	79	(72–87)	67	(60–74)
5923	Fraser South	*81.3	(72.9–89.7)	73	(66–80)	46	(41–51)
5931	Richmond	*52.6	(40.1–65.1)	88	(74–102)	67	(54–79)
5932	Vancouver	*52.9	(46.1–59.8)	173	(162–184)	255	(242–268)
5933	North Shore	*72.7	(61.7–83.7)	120	(107–133)	71	(61–81)
5941	South Vancouver Island	*67.8	(58.8–76.8)	146	(134–159)	116	(105–127)
5942	Central Vancouver Island	89.7	(77.8–101.5)	101	(89–114)	63	(53–73)
5943	North Vancouver Island	107.8	(86.8–128.7)	112	(93–132)	57	(43–71)
5951	Northwest	106.9	(77.4–136.3)	129	(105–153)	22	(12–33)
5952	Northern Interior	*71.9	(54.6–89.1)	91	(75–106)	42	(32–53)
Y.T.		96.8	(44.8–148.8)	166	(120–212)	13	(0–26)
N.W.T.		*50.9	(15.1–86.7)	58	(35–82)	32	(14–49)
Nun.		86.2	(20.6–151.8)	25	(6–43)	*	*
Canada		95.1	(93.9–96.3)	95	(94–96)	93	(92–94)

Map Code	Health Region	Inflow/Outflow Ratio 2001–2002				
		Overall	Bypass Surgery	Hip Replacement	Knee Replacement	Hysterectomy
N.L.		**	**	**	**	**
1001	St. John's area	1.52	2.82	1.59	1.98	1.40
1002	Eastern, N.L.	0.54	0.00	0.00	0.00	0.70
1003	Central, N.L.	0.88	0.00	0.93	0.97	0.90
1004	Western, N.L.	0.95	0.00	1.04	0.98	1.00
P.E.I.		0.95	0.00	0.87	0.98	0.97
N.S.		**	**	**	**	**
1201	Zone 1, N.S.	0.74	0.00	0.00	0.00	0.77
1202	Zone 2, N.S.	1.00	0.00	1.68	1.81	1.31
1203	Zone 3, N.S.	0.65	0.00	0.00	0.00	0.66
1204	Zone 4, N.S.	0.83	0.00	0.15	0.11	0.97
1205	Zone 5, N.S.	0.94	0.00	1.05	1.01	0.84
1206	Zone 6, N.S.	1.46	2.92	1.85	1.72	1.22
N.B.		**	**	**	**	**
1301	Region 1, N.B. (Moncton area)	1.13	0.00	1.27	1.18	1.22
1302	Region 2, N.B. (Saint John area)	1.16	4.01	0.99	0.99	0.97
1303	Region 3, N.B. (Fredericton area)	0.95	0.00	1.07	1.10	1.01
1306	Region 6, N.B. (Bathurst area)	0.96	0.00	0.93	1.22	1.02
Que.		**	**	**	**	**
2401	Bas-Saint-Laurent	0.92	0.00	0.84	0.93	0.98
2402	Saguenay–Lac-Saint-Jean	1.01	1.00	0.91	1.01	1.05
2403	Région de Québec	1.32	2.26	1.32	1.44	1.26
2404	Mauricie et Centre-du-Québec	0.88	0.01	1.05	1.02	0.93
2405	Estrie	1.04	1.15	0.58	0.65	1.00
2406	Montréal-Centre	1.37	2.95	1.44	1.48	1.48
2407	Outaouais	0.83	0.00	0.85	0.80	0.61
2408	Abitibi–Témiscamingue	0.98	0.00	1.04	1.02	1.01
2409	Côte-Nord	0.81	0.00	0.38	0.34	0.76
2411	Gaspésie–Îles-de-la-Madeleine	0.73	0.00	0.76	0.52	0.63
2412	Chaudière–Appalaches	0.76	0.01	0.91	0.85	0.81
2413	Laval	0.79	0.00	0.59	0.76	0.91
2414	Lanaudière	0.70	0.00	0.65	0.57	0.78
2415	Laurentides	0.84	0.04	0.67	0.74	0.60
2416	Montérégie	0.78	0.00	0.68	0.75	0.80
Ont.		**	**	**	**	**
3501	Champlain (Ottawa area)	1.13	1.61	1.08	1.09	1.16
3502	Southeastern Ontario	0.95	0.89	0.89	0.94	0.92
3503	Durham, Haliburton, Kawartha and Pine Ridge	0.77	0.00	0.55	0.50	0.82
3504	Toronto	1.30	2.26	1.63	1.60	1.42
3505	Simcoe York	0.87	0.00	0.75	0.75	0.91
3506	Halton–Peel	0.91	0.86	0.97	1.00	0.87
3507	Waterloo–Wellington–Dufferin	0.92	0.00	0.82	0.84	0.94
3508	Hamilton	1.29	2.44	1.24	1.31	1.23
3509	Niagara	0.86	0.00	0.74	0.82	0.92
3510	Grand River (Brantford area)	0.75	0.00	0.38	0.41	0.73
3511	Thames Valley (London area)	1.29	3.42	1.36	1.35	1.27
3512	Essex Kent Lambton (Windsor area)	0.90	0.00	0.92	0.94	0.89
3513	Grey Bruce Huron and Perth	0.87	0.00	0.64	0.70	0.83
3514	Northern Shores	0.84	0.00	0.18	0.38	0.66
3515	ACMS (Sudbury area)	1.01	1.29	0.90	0.86	1.00
3516	Northwestern Ontario	0.93	0.00	0.94	0.98	0.91
Man.		**	**	**	**	**
4610	Winnipeg	1.37	1.94	1.63	1.69	1.44
4630	Interlake	0.57	0.00	0.00	0.00	0.27
4640	Central	0.79	0.00	0.23	0.00	0.35
Sask.		**	**	**	**	**
4704	Regina	1.22	1.93	1.64	1.59	1.23
4706	Saskatoon	1.39	1.98	2.07	1.79	1.59
4709	Prince Albert	0.90	0.00	0.61	0.81	0.48
Alta.		**	**	**	**	**
4820	Chinook	0.97	0.00	1.02	1.18	1.14
4821	Palliser	0.92	0.00	0.76	0.80	0.86
4822	Calgary	1.11	1.68	1.15	1.14	1.11
4823	David Thompson	0.89	0.00	0.61	0.62	0.74
4824	East Central	0.72	0.00	0.55	0.47	0.24
4825	Capital	1.25	1.74	1.44	1.39	1.31
4826	Aspen	0.76	0.01	0.00	0.00	0.22
4827	Peace Country	0.87	0.00	1.07	0.93	0.89
B.C.		**	**	**	**	**
5911	East Kootenay	0.81	0.00	0.53	0.57	0.63
5912	Kootenay/Boundary	0.90	0.00	1.03	1.17	0.85
5913	Okanagan	1.03	0.00	1.10	1.13	1.15
5914	Thompson/Cariboo	0.94	0.00	0.60	0.63	0.87
5921	Fraser East	0.87	0.00	0.93	0.92	0.83
5922	Fraser North	1.03	1.70	0.96	1.06	0.88
5923	Fraser South	0.76	0.00	0.61	0.73	0.86
5931	Richmond	0.98	0.00	1.84	1.87	0.75
5932	Vancouver	1.63	5.63	2.44	2.16	1.86
5933	North Shore	0.83	0.00	0.61	0.82	0.79
5941	South Vancouver Island	1.14	2.43	0.93	0.99	1.06
5942	Central Vancouver Island	0.83	0.00	0.87	0.81	0.91
5943	North Vancouver Island	0.91	0.00	1.14	1.25	0.98
5951	Northwest	0.87	0.00	0.41	0.33	0.84
5952	Northern Interior	0.92	0.00	0.66	0.55	0.92
Y.T.		0.87	0.00	0.00	0.00	1.03
N.W.T.		1.04	0.00	0.80	1.21	0.91
Nun.		0.49	0.00	0.00	0.00	0.33
Canada		**	**	**	**	**

HEALTH PROFESSIONALS †

	RNs		LPNs		Physicians			Pharmacists 2002	Dentists 2002	Dental Hygienists 2002	Dietitians 2002	Occupational Therapists 2002	Physio- therapists 2002	Chiropractors 2002	Optometrists 2002
	2002	2002	Total 2002	GP/FP 2002	Certified Specialists 2002										
	N.L.	1,024	519	175	110	65	102								
PE.I.	921	423	136	85	51	98	44	31	42	27	38	6	10		
N.S.	891	312	206	107	99	105	50	49	41	27	51	9	8		
N.B.	973	308	157	93	64	73	36	33	37	27	53	8	12		
Que.	793	195	212	106	106	84	54	49	26	37	44	14	16		
Ont.	650	197	179	85	95	75	62	59	19	29	46	26	10		
Man.	864	196	181	93	87	94	49	51	26	31	48	22	8		
Sask.	818	199	155	96	59	107	35	30	23	20	51	18	11		
Alta.	747	142	180	97	84	99	55	51	23	32	52	25	11		
B.C.	672	103	199	109	89	85	66	48	22	31	57	21	9		
Y.T.	913	215	175	161	13	104	91	47		40	..	27	17		
N.W.T.	1,176	191	111	72	39	87	116	41	47	24	0		
Nun.	948	..	35	35	0	17		
Canada	734	191	189	96	93	84	57	51	23	31	48	20	11		

† Rates are per 100,000 population

See Definitions and Data Sources for interpretation of *Physicians*. For information on how other professional groups are defined, please contact hpdb@cihi.ca.

Sources: Southam Medical Database, Health Personnel Database, Registered Nurses Database, CIHI

HEALTH EXPENDITURES

	Total Health Expenditure (\$000,000), Current Dollars			Total Health Expenditure \$ per Capita, Current Dollars			% of GDP	% Public Sector	Total Health Expenditure by Use of Funds \$ per Capita			
	Actual	Forecast	Forecast	Actual	Forecast	Forecast			Institutional Services 2001	Professional Services 2001	Drugs 2001	Capital and Other Health 2001
	2001	2002	2003	2001	2002	2003			2001	2001	2001	2001
N.L.	1,810	1,923	1,995	3,468	3,704	3,839	12.8	78.8	1,774	614	502	578
PE.I.	454	504	539	3,324	3,676	3,909	13.1	67.8	1,487	670	584	582
N.S.	2,991	3,276	3,483	3,208	3,507	3,721	11.5	69.6	1,479	703	548	479
N.B.	2,450	2,619	2,789	3,267	3,491	3,715	11.8	71.1	1,503	686	551	528
Que.	23,017	24,401	26,030	3,112	3,278	3,477	9.9	71.7	1,395	699	557	461
Ont.	41,545	44,489	48,284	3,492	3,678	3,945	9.2	66.1	1,257	951	584	699
Man.	4,267	4,577	4,907	3,706	3,961	4,220	12.1	74.5	1,634	794	464	814
Sask.	3,422	3,619	3,857	3,422	3,635	3,877	10.2	75.4	1,383	748	487	803
Alta.	10,857	11,789	12,648	3,552	3,785	4,010	7.2	70.9	1,321	854	481	896
B.C.	14,557	15,573	16,251	3,569	3,784	3,919	11.0	74.0	1,454	1,012	444	659
Y.T.	144	153	155	4,789	5,080	5,002	11.7	81.3	1,475	837	404	2,072
N.W.T.	263	291	309	6,450	7,017	7,376	9.1	90.3	2,654	954	440	2,401
Nun.	177	182	186	6,306	6,335	6,316	20.4	95.0	2,696	760	268	2,582
Canada	105,954	113,396	121,431	3,416	3,616	3,839	9.6	70.1	1,366	856	537	656

Source: Health Expenditure Database, CIHI, 2003

HEALTH SURVEILLANCE

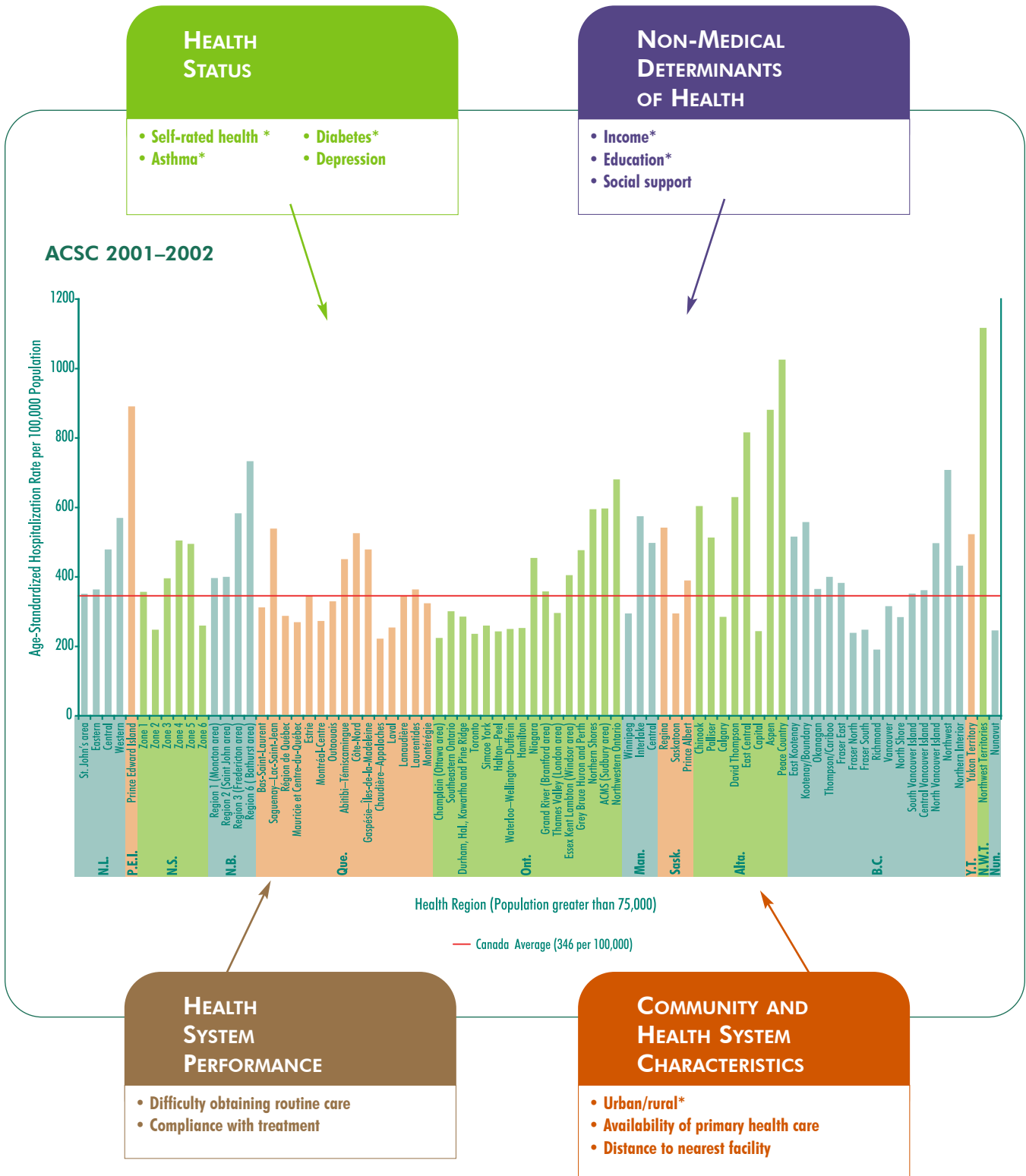
	HIV + Test Reports		Chlamydia, Genital Cases		Infectious Syphilis Cases		Tuberculosis Cases		Hepatitis Cases, by Type		
	1998	2002	1996	2000	1996	2000	1997	2001	A 2000	B 2000	C 2000
	N.L.	14	0	279	476	0	0			1	2
PE.I.	34	12	131	231	0	0			0	0	11
N.S.			1,074	1,405	3	1	34	40	8	13	254
N.B.	13	10	839	1,243	0	1			8	9	211
Que.	567	620	6,655	8,729	12	7	360	259	112	363	4,209
Ont.	996	1,143	10,605	14,603	78	43	761	634	155	150	5,767
Man.	71	68	2,559	3,263	1	1	96	115	6	13	505
Sask.	25	23	2,236	2,936	10	0	121	114	14	32	720
Alta.	135	153	4,868	6,001	0	13	166	116	47	68	2,253
B.C.	482	441	4,436	6,193	19	95	405	379	138	328	4,733
Y.T.	3	3	144	146	0	10			0	2	47
N.W.T.	1	0	899	484	0	0	33	47	0	1	29
Nun.	..	0		704	0	0			0	0	6
Canada	2,341	2,473	34,725	46,414	123	171	1,976	1,704	489	981	18,797

Sources:

HIV and AIDS in Canada—Surveillance Report to December 31, 2002, Health Canada;
Centre for Infectious Disease Prevention and Control, Health Canada, 2001 and 2003;
Tuberculosis in Canada 2001, Health Canada

Making Sense of the Indicators

While a single indicator offers useful information, looking at a range of factors, including health status, non-medical determinants of health, health system performance, and community and health system characteristics, can sometimes provide additional insights. In some regions, an ambulatory care sensitive conditions (ACSC) hospitalization rate that appears high relative to the Canada rate may, for example, be associated with high prevalence of diabetes, low income, non-compliance with treatment or poor access to primary health care.



* Data are available in this publication. Ambulatory care sensitive conditions include asthma, diabetes, hypertension, drug or alcohol dependency, and certain mental disorders.

Definitions and Data Sources

Ambulatory care sensitive conditions (ACSC) hospitalization:

Age-standardized inpatient acute care hospitalization rate for conditions where appropriate ambulatory care prevents or reduces the need for hospitalization, per 100,000 population.

Source: CIHI, Hospital Morbidity Database

Asthma:

Population aged 12 and over who report that they have been diagnosed by a health professional as having asthma.

Source: Statistics Canada, *Canadian Community Health Survey, 2000–2001*, health file

Average personal income (income for the year prior to the Census):

Average personal income (pre-tax, post-transfer) for persons aged 15 and over who reported income. Higher income is associated with better health.

Source: Statistics Canada, 2001 Census (20% sample)

Bypass surgery rate (CABG):

Age-standardized rate of coronary artery bypass graft surgery performed on inpatients in acute care hospitals, per 100,000 population aged 20 and older. Variations in bypass surgery rates may be related to utilization of coronary angiography, an alternative intervention for improving blood flow to the heart.

Source: CIHI, Hospital Morbidity Database

Caesarean sections:

Proportion of women delivering babies in acute care hospitals by caesarean section. Due to the characteristics of the database, stillbirths are excluded from the denominator.

Source: CIHI, Hospital Morbidity Database

Chlamydia:

Number of cases of genital chlamydia reported. The data for 2000 are provisional and are subject to change.

Source: Health Canada, Centre for Infectious Disease Prevention and Control, 2003

Dependency ratio:

The ratio of the combined child population (aged 0 to 14) and elderly population (aged 65 and over) to the working-age population (aged 15 to 64). This ratio is presented as the number of dependents for every 100 people in the working-age population. Canadians aged 65 and over and those under age 15 are more likely to be socially and/or economically dependent on working-age Canadians, and they may also put additional demands on health services.

Source: Statistics Canada, Demography Division (2001 preliminary population estimates)

Diabetes:

Population aged 12 and over who report that they have been diagnosed by a health professional as having diabetes.

Source: Statistics Canada, *Canadian Community Health Survey, 2000–2001*, health file

Health expenditures:

Health expenditures in current dollars; expenditures per capita; percent of gross domestic product; public-sector expenditures as a percent of total spending; and expenditures by use of funds per capita.

Source: CIHI, National Health Expenditure Database

Health professionals:

Number of health professionals (selected professions) per 100,000 population. See *Physicians* for notes about this professional group. **Nursing professionals (RNs, LPNs):** Rates reflect nurses registered with active-practising status and who are employed in registered/practical nursing. Rates will differ from data published by provincial/territorial regulatory authorities due to the CIHI collection, processing and reporting methodology. **Registered nurses (RNs):** Data from the territories include secondary registrations.

Licensed practical nurses (LPNs): Nunavut data are not available for 2002; as the Yukon did not submit information regarding employment status, all LPNs registered in the Yukon are considered to be employed in practical nursing. **Other health professional** data reflect personnel regardless of employment status and include the number of licensed pharmacists (excluding non-practicing pharmacists, honorary pharmacists, and certified clerks); licensed dentists (general practice and specialists); active registered physiotherapists; registered dental hygienists; registered chiropractors; active registered optometrists; registered dietitians; and active registered occupational therapists. Personnel per population ratios are revised annually using the most recent Statistics Canada population estimates and therefore may differ slightly from previously published figures.

Sources: CIHI, Health Personnel Database, Registered Nurses Database, Southam Medical Database

Hepatitis:

The number of reported cases of hepatitis A, hepatitis B, and hepatitis C. Both hepatitis A and B are preventable through immunization. The increases in reported newly diagnosed cases of hepatitis C may be due to the increase in the use of laboratory testing for this virus, and may represent both acute and chronic cases. Therefore, these numbers should not be used for identifying trends or outbreaks.

Source: Health Canada; Centre for Infectious Disease Prevention and Control, 2003

High school graduates:

Population aged 25 to 29 who have a high school graduation certificate. A measure of educational attainment and socio-economic status.

Source: Statistics Canada, 2001 Census (20% sample)

Hip fracture hospitalization:

Age-standardized hospitalization rate for fracture of the hip, per 100,000 population aged 65 and older.

Source: CIHI, Hospital Morbidity Database

Hip replacement rate:

Age-standardized rate of hip replacement surgery (unilateral or bilateral) performed on inpatients in acute care hospitals, per 100,000 population.

Source: CIHI, Hospital Morbidity Database

HIV test reports:

Number of positive HIV test reports by province/territory and year of test. The data are based on positive serology results for cases over two years of age for Ontario, Quebec and British Columbia.

Source: Health Canada, Centre for Infectious Disease Prevention and Control; *HIV and AIDS in Canada—Surveillance Report to December 31, 2002*

Hysterectomy rate:

Age-standardized rate of hysterectomy provided to inpatients in acute care hospitals, per 100,000 women aged 20 and older.

Source: CIHI, Hospital Morbidity Database

Infectious syphilis:

Early symptomatic (primary and secondary) syphilis and early latent syphilis.

Source: Health Canada, Centre for Infectious Disease Prevention and Control, 2001

Inflow/outflow ratio:

A ratio of the number of separations from acute care hospitals within a given region divided by the number of acute care hospital discharges generated by residents of that region. An overall ratio is calculated for discharges associated with any diagnosis or procedure and separately for coronary artery bypass surgery, hip replacement, knee replacement and hysterectomy procedures. A ratio of less than one indicates that hospital stays utilized by residents of a region exceeded hospital care provided within that region, suggesting an outflow effect. A ratio greater than one indicates hospital stays provided by a region exceeded the quantity of stays utilized by its residents, suggesting an inflow effect. A ratio of one indicates that the volume of hospital discharges in the region is equivalent to that generated by its residents, suggesting that inflow and outflow activity, if it exists at all, is balanced. A ratio of zero is an indication that none of the institutions in the region provided the service and residents received care outside of their region.

Source: CIHI, Hospital Morbidity Database

In-hospital hip fracture rate:

The risk-adjusted rate of in-hospital hip fracture among acute care inpatients aged 65 years and older, per 1,000 medical and surgical discharges. Rates are based on three years of pooled data.

Source: CIHI, Discharge Abstract Database

In-hospital 30-day acute myocardial infarction (AMI) mortality rate:

The risk-adjusted rate of all-cause in-hospital death occurring within 30 days of first admission to an acute care hospital with a diagnosis of AMI (aged 20 to 105 years). Rates are based on three years of pooled data.

Source: CIHI, Hospital Morbidity Database

In-hospital 30-day stroke mortality rate:

The risk-adjusted rate of all-cause in-hospital death occurring within 30 days of first admission to an acute care hospital with a diagnosis of stroke (aged 20 to 105 years). Rates are based on three years of pooled data.

Source: CIHI, Hospital Morbidity Database

Knee replacement rate:

Age-standardized rate of knee replacement surgery (unilateral or bilateral) performed on inpatients in acute care hospitals, per 100,000 population.

Source: CIHI, Hospital Morbidity Database

Low income rate (income for the year prior to the Census):

Population in economic families and unattached individuals with incomes below the Statistics Canada low-income cut-off (LICO). The cut-offs represent levels of income where people spend disproportionate amounts of money for food, shelter, and clothing. The low income rate is a widely used measure of socio-economic status. Higher income is associated with better health.

Source: Statistics Canada, 2001 Census (20% sample)

Physicians:

Physician counts include all active general practitioners, family practitioners and specialist physicians as of December 31 of the reference year. The data includes physicians in clinical and non-clinical practice and excludes residents and physicians who are not licensed to provide clinical practice and have requested to the Business Information Group that their data not be published. For purposes of reporting, physician specialty classification is based on postgraduate certification credentials achieved in Canada. Physicians designated as **family practitioners** include certificants of the College of Family Physicians of Canada (CCFP and CCFP-Emergency Medicine). **Specialist physicians** include certificants of the Royal College of Physicians and Surgeons of Canada and/or the Collège des médecins du Québec. All other physicians, including non-College of Family Physicians general practitioners, foreign-certified specialists, and other non-certified specialists, are included in the **family practice** counts. It is recognized that physician classification in this manner does not necessarily reflect the services provided by individual physicians. The range of services provided by a physician is subject to provincial licensure rules, medical service plan payment arrangements, and individual practice choices. Therefore, rates may differ from other publications. For example, the Newfoundland Medical Board (NMB) granted full or provisional licenses to 132 non-certified specialists in 2002. These physicians are counted as family practitioners in this report, but are counted as specialist physicians in the annual report of the NMB Registrar.

Source: CIHI, Southam Medical Database

Pneumonia and influenza hospitalization:

Age-standardized acute care hospitalization rate for pneumonia and influenza, per 100,000 population aged 65 and older.

Source: CIHI, Hospital Morbidity Database

Population estimates:

The number of people living in a geographic area. A population's size and age/sex composition impact the health status of a region and its need for health services. Population data also provide the "denominators" used to calculate rates for most health and social indicators.

Sources: Statistics Canada, Demography Division. Data are derived from the Census and administrative sources on births, deaths, and migration. Population growth for Quebec, Alberta and British Columbia were supplied by the Institut de la statistique du Québec, Alberta Health and Wellness and BC Stats respectively.

Post-secondary graduates:

Population aged 25 to 54 who have obtained a post-secondary certificate, diploma, or degree. A measure of educational attainment and socio-economic status.

Source: Statistics Canada, 2001 Census (20% sample)

Readmission rate—acute myocardial infarction (AMI):

The risk-adjusted rate of unplanned readmission following discharge for acute myocardial infarction (aged 15 to 84 years). A case is counted as a readmission if it is for a relevant diagnosis and occurs within 28 days after the index AMI episode of care. Rates are based on three years of pooled data.

Source: CIHI, Discharge Abstract Database

Readmission rate—asthma:

The risk-adjusted rate of unplanned readmission following discharge for asthma (aged 15 to 84 years). A case is counted as a readmission if it is for a relevant diagnosis and occurs within 28 days after the index episode of care. Rates are based on three years of pooled data.

Source: CIHI, Discharge Abstract Database

Readmission rate—hysterectomy:

The risk-adjusted rate of unplanned readmission following discharge for hysterectomy (aged 15 to 84 years). A case is counted as a readmission if it is for a relevant diagnosis and occurs within seven or 28 days after the index episode of care. Rates are based on three years of pooled data.

Source: CIHI, Discharge Abstract Database

Readmission rate—pneumonia:

The risk-adjusted rate of unplanned readmission following discharge for pneumonia (aged 15 to 84 years). A case is counted as a readmission if it is for a relevant diagnosis or procedure and occurs within 28 days after the index episode of care. Rates are based on three years of pooled data.

Source: CIHI, Discharge Abstract Database

Readmission rate—prostatectomy:

The risk-adjusted rate of unplanned readmission following discharge for prostatectomy (aged 15 to 84 years). A case is counted as a readmission if it is for a relevant diagnosis or procedure and occurs within 28 days after the index episode of care. Rates are based on three years of pooled data.

Source: CIHI, Discharge Abstract Database

Self-rated health:

Population aged 12 and over who rate their own health status as either “fair” or “poor.”

Source: Statistics Canada, *Canadian Community Health Survey, 2000–2001*, health file

Tuberculosis:

Number of cases of reported new active and relapsed tuberculosis cases meeting the Canadian tuberculosis case definition.

Source: Health Canada, Centre for Infectious Disease Prevention and Control; *Tuberculosis in Canada, 2001*

Unemployment rate:

Labour force aged 15 and over who did not have a job during the reference period. The labour force consists of people who are currently employed and people who are unemployed but were available to work in the reference period and had looked for work in the past four weeks. The reference period refers to a one-week period (from Sunday to Saturday) that usually includes the 15th day of the month. The unemployment rate is a traditional measure of the economy. Unemployed people tend to experience more health problems.

Source: Statistics Canada, Labour Force Survey (special tabulations)

Urban:

People living in urban areas. An urban area is defined as having a minimum population of 1,000 and a population density of 400 people per square kilometre. This community characteristic allows users to compare regions with similar proportions of urban/rural population.

Source: Statistics Canada, 2001 Census

Vaginal birth after caesarean section (VBAC):

Proportion of women who have previously had a caesarean section who give birth via vaginal delivery in an acute care hospital.

Source: CIHI, Hospital Morbidity Database

Youth unemployment rate:

Labour force aged 15 to 24 who did not have a job during the reference period.

Source: Statistics Canada, Labour Force Survey (special tabulations)

General Notes

- The methodology used for these indicators was designed to maximize inter-regional, inter-provincial, and inter-territorial comparability. For this reason, and because the indicators are based on the latest updates available at the time of publication, there may be differences with definitions and data sources used in other reports.
- Health regions are defined by provincial governments as the areas of responsibility for regional health boards (i.e. legislated) or as regions of interest to health care authorities. In order to provide for more stable rate estimation, as well as less suppression due to privacy and confidentiality issues, only data from regions with a population of at least 75,000 are reported. Boundaries are those that were in effect as of June 2003.
- Indicators derived from the 2000/2001 Canadian Community Health Survey (CCHS) are based on boundaries that were in effect as of June 2002 for British Columbia and January 2000 for all other provinces and territories. CCHS indicators are not displayed for regions where boundaries were revised after these dates.
- Data are based on a patient's *region of residence*, which may not be the same as the *region of hospitalization*.
- Hospitalizations include discharges and deaths for inpatients in acute care hospitals for the reference period. Same day surgery (out-patient) cases and patients admitted to non-acute care hospitals (e.g. chronic care, psychiatric, or rehabilitation facilities) are generally not included in the totals.
- ICD-10-CA and the Canadian Classification of Health Interventions (CCI) systems of coding diagnoses and procedures came into effect April 1, 2001, and were adopted by Newfoundland (now Newfoundland and Labrador), Prince Edward Island, Nova Scotia, parts of Saskatchewan, British Columbia and the Yukon Territory. Ontario, the remainder of Saskatchewan, Alberta, the Northwest Territories and Nunavut implemented ICD-10/CCI on April 1, 2002. Most of the indicators are based on data up to and including March 31, 2002, and some include data to March 31, 2003.
- Indicator cases that were originally coded in ICD-10 or CCI were extracted on the relevant codes and not the ICD-9 or CCP translations.
- New and revised coding standards were introduced with the ICD-10/CCI classification systems, notably those for pneumonia and acute myocardial infarction. Therefore, rates based on either of these conditions may not be comparable with earlier years. See the *Health Indicators e-Publication* for further information (www.cihi.ca/indicators).
- The definition for hysterectomy has changed, and therefore rates may not be comparable to previous years. See the *Health Indicators e-Publication* for further information (www.cihi.ca/indicators).
- The 30-day in-hospital mortality, in-hospital hip fracture and readmission indicator rates are based on a three-year average. Due to differences in the way data are collected, these indicators are not available for all provinces and territories. The average (Canada) rate does not include all provinces and territories.
- Standardized rates are age-adjusted using a direct method of standardization based on the July 1, 1991 population.
- The diagnosis and procedure codes used to extract the indicator data are available in the *Health Indicators e-Publication* (www.cihi.ca/indicators).
- Technical notes describing the risk-adjustment methodology are available in the *Health Indicators e-Publication* (www.cihi.ca/indicators).

For more information, visit www.cihi.ca
or contact indicators@cihi.ca

Canadian Institute for Health Information
377 Dalhousie Street, Suite 200
Ottawa, Ontario K1N 9N8

Aussi disponible en français.

© 2004 Canadian Institute for Health Information (CIHI)
All rights reserved.

From **COVER** to **e-COVER**.

CIHI, in partnership with Statistics Canada, maintains the country's most comprehensive set of regional health indicators. *Health Indicators 2004* provides you with a sample of these. For even more health indicators and related information, take a look at our **Health Indicators e-Publication**, available on-line!

www.cihi.ca/indicators

or

www.statcan.ca

Health Indicators

Access all available CIHI and Statistics Canada health indicators.

Data Tables and Maps

Explore data tables, selecting items such as geography, age group, and sex.

Definitions and Technical Notes

Find definitions, data sources, and methodologies for health indicators.

Highlights

Get a general overview of the state of the health system and the health of Canadians.



Statistics
Canada

Statistique
Canada



Canadian Institute
for Health Information

Institut canadien
d'information sur la santé



taking health information further
à l'avant-garde de l'information sur la santé