



2005
www.cihi.ca

Health Indicators



Statistics Canada
Statistique Canada



Canadian Institute
for Health Information

Institut canadien
d'information sur la santé

The contents of this publication may be reproduced in whole or in part provided the intended use is for non-commercial purposes and full acknowledgement is given to the Canadian Institute for Health Information.

Canadian Institute for Health Information
495 Richmond Road, Suite 600
Ottawa, Ontario K2A 4H6

Tel.: (613) 241-7860
Fax: (613) 241-8120
www.cihi.ca

ISBN 1-55392-621-8 (PDF)

© 2005 Canadian Institute for Health Information

Cette publication est aussi disponible en français sous le titre :
Indicateurs de santé 2005 ISBN 1-55392-623-4 (PDF)

Table of Contents

Preface	2
Using This Report	2
Health Indicator Framework	3
Profile	4
Health Status	5
Non-Medical Determinants of Health	6
Health System Performance	7
Regional Map	12
Community and Health System Characteristics	14
Provincial and Territorial Indicators	18
Health Professionals	18
Health Expenditure	18
Health Surveillance	18
Where Do Indicators Come From?	19
Definitions and Data Sources	20
General Notes	24

Preface

Health Indicators 2005 is the sixth in a series of reports highlighting the most recent available information about the health care system, the health status of Canadians, and the determinants of health for Canada's largest regions, provinces, and territories.

Since 1999, the Canadian Institute for Health Information (CIHI) and Statistics Canada have collaborated on the Health Indicators project, developing and providing a broad range of indicators for health regions across the country. In this edition, key indicators describing health system performance and characteristics are provided for all health regions with a population of over 75,000 (covering approximately 95% of Canada's population). In addition, a selection of measures of health status and the non-medical determinants of health are listed and represent a sample of the range of indicators that are now available.

In order to provide the most up-to-date and relevant information possible, several changes have been introduced in this edition. One indicator, *ambulatory care sensitive conditions (ACSC)*, has been redeveloped so that it better reflects those health conditions that can be effectively managed in the community, thereby preventing or reducing admissions to hospital. Readers will also note changes in region structure in Ontario, and Newfoundland and Labrador, reflecting the creation of new regional entities that went into effect on April 1, 2005. Also new for this year is a feature outlining the essential steps for indicator development, from inception to publication.

The Health Indicators project has benefited greatly from consultations with our stakeholders across the country. The assistance offered by many individuals in health regions, provinces, and territories who reviewed these indicators and offered useful suggestions is gratefully acknowledged.

As always, we welcome your comments on this publication. Please send your suggestions about the indicators or priorities for future indicator development to indicators@cihi.ca.

Using This Report

Rates are provided for all health regions with populations of at least 75,000 as of July 1, 2002.

Confidence intervals are provided for most indicators to aid interpretation. The width of the confidence interval illustrates the degree of variability associated with the rate. Indicator values are estimated to be accurate within the upper and lower confidence interval 19 times out of 20 (95% confidence interval).

Please see Definitions and Data Sources at the back of this report for information on how the indicators are defined and important interpretive notes.

Symbols and Abbreviations Used in This Report

--	Figures not available
*	Data were suppressed due to small numbers
▼	Interpret with caution
95% CI	95% confidence interval
♦	Statistically different from the overall average ($p < 0.05$)
ADRLSSSS	Agence de développement des réseaux locaux de services de santé et de services sociaux
HSDA	Health Service Delivery Area
LHIN	Local Health Integration Network
RHA	Regional Health Authority

Health Indicator Framework

HEALTH STATUS

How healthy are Canadians?

Health status can be measured in a variety of ways, including well-being, health conditions, disability, or death.

Health Conditions	Human Function	Well-Being	Deaths
-------------------	----------------	------------	--------

NON-MEDICAL DETERMINANTS OF HEALTH

Non-medical determinants of health are known to affect our health and, in some cases, when and how we use health care.

Health Behaviours	Living and Working Conditions	Personal Resources	Environmental Factors
-------------------	-------------------------------	--------------------	-----------------------

HEALTH SYSTEM PERFORMANCE

How healthy is the health care system?

These indicators measure various aspects of the quality of health care.

Acceptability	Accessibility	Appropriateness	Competence
Continuity	Effectiveness	Efficiency	Safety

COMMUNITY AND HEALTH SYSTEM CHARACTERISTICS

These measures provide useful contextual information, but are not direct measures of health status or the quality of health care.

Community	Health System	Resources
-----------	---------------	-----------

EQUITY

Map Code	Health Region	Legend Name	Province/Territory	Population ('000) (2002)	% Population Age 65+ (2002)	Dependency Ratio (2002)	Life Expectancy (2001)
10	Newfoundland and Labrador		N.L.	520	12.3	40.9	77.9
1011	Eastern Regional Integrated Health Authority	Eastern, N.L.	N.L.	297	12.1	40.1	..
1012	Central Regional Integrated Health Authority	Central, N.L.	N.L.	101	14.3	43.0	78.3
1013	Western Regional Integrated Health Authority	Western, N.L.	N.L.	82	13.6	43.0	77.9
11	Prince Edward Island		P.E.I.	137	13.7	48.7	78.6
12	Nova Scotia		N.S.	935	13.7	45.2	78.8
1201	Zone 1	Zone 1, N.S.	N.S.	125	16.9	49.3	79.3
1202	Zone 2	Zone 2, N.S.	N.S.	83	15.3	49.5	79.4
1203	Zone 3	Zone 3, N.S.	N.S.	107	15.4	49.5	79.2
1204	Zone 4	Zone 4, N.S.	N.S.	96	15.6	48.9	78.7
1205	Zone 5	Zone 5, N.S.	N.S.	132	15.7	49.3	76.9
1206	Zone 6	Zone 6, N.S.	N.S.	393	11.0	40.3	79.1
13	New Brunswick		N.B.	751	13.3	44.0	79.0
1301	Region 1	Region 1, N.B. (Moncton area)	N.B.	190	13.7	42.8	79.8
1302	Region 2	Region 2, N.B. (Saint John area)	N.B.	176	13.5	47.0	78.5
1303	Region 3	Region 3, N.B. (Fredericton area)	N.B.	169	12.4	44.5	79.0
1306	Region 6	Region 6, N.B. (Bathurst area)	N.B.	84	13.1	39.8	79.0
24	Quebec		Que.	7,458	13.1	43.9	79.3
2401	ADRLSSSS du Bas-Saint-Laurent	Bas-Saint-Laurent	Que.	203	15.6	45.8	79.9
2402	ADRLSSSS du Saguenay-Lac-Saint-Jean	Saguenay-Lac-Saint-Jean	Que.	281	12.9	42.4	78.3
2403	ADRLSSSS de la Capitale nationale	Capitale nationale	Que.	656	14.2	41.5	79.6
2404	ADRLSSSS de la Mauricie et du Centre-du-Québec	Mauricie et Centre-du-Québec	Que.	482	15.3	46.2	78.8
2405	ADRLSSSS de l'Estrie	Estrie	Que.	294	14.1	46.2	79.7
2406	ADRLSSSS de Montréal	Montréal	Que.	1,867	14.9	44.4	79.5
2407	ADRLSSSS de l'Outaouais	Outaouais	Que.	327	10.3	41.5	78.0
2408	ADRLSSSS de l'Abitibi-Témiscamingue	Abitibi-Témiscamingue	Que.	147	11.6	44.7	77.8
2409	ADRLSSSS de la Côte-Nord	Côte-Nord	Que.	98	10.1	40.5	78.5
2411	ADRLSSSS de la Gaspésie-Îles-de-la-Madeleine	Gaspésie-Îles-de-la-Madeleine	Que.	98	15.9	46.1	79.4
2412	ADRLSSSS de Chaudière-Appalaches	Chaudière-Appalaches	Que.	391	13.1	44.0	79.8
2413	ADRLSSSS de Laval	Laval	Que.	355	13.3	46.1	80.3
2414	ADRLSSSS de Lanaudière	Lanaudière	Que.	401	10.9	44.0	78.4
2415	ADRLSSSS des Laurentides	Laurentides	Que.	481	11.0	44.3	78.5
2416	ADRLSSSS de la Montérégie	Montérégie	Que.	1,325	11.7	43.7	79.4
35	Ontario		Ont.	12,145	12.4	46.2	79.7
3501	Erie-St. Clair LHIN	Erie-St. Clair	Ont.	640	13.4	48.7	..
3502	South West LHIN	South West	Ont.	914	14.2	50.3	..
3503	Waterloo Wellington LHIN	Waterloo Wellington	Ont.	669	11.4	46.1	..
3504	Hamilton Niagara Haldimand Brant LHIN	Hamilton Niagara Haldimand Brant	Ont.	1,332	14.5	49.9	..
3505	Central West LHIN	Central West	Ont.	679	9.2	42.7	..
3506	Mississauga Halton LHIN	Mississauga Halton	Ont.	975	9.4	43.1	..
3507	Toronto Central LHIN	Toronto Central	Ont.	1,153	13.1	43.8	..
3508	Central LHIN	Central	Ont.	1,465	10.9	43.3	..
3509	Central East LHIN	Central East	Ont.	1,432	12.9	47.0	..
3510	South East LHIN	South East	Ont.	466	15.4	49.8	..
3511	Champlain LHIN	Champlain	Ont.	1,160	12.2	44.7	..
3512	North Simcoe Muskoka LHIN	North Simcoe Muskoka	Ont.	400	13.7	50.9	..
3513	North East LHIN	North East	Ont.	573	14.7	48.4	..
3514	North West LHIN	North West	Ont.	244	12.9	49.0	..
46	Manitoba		Man.	1,157	13.5	51.5	78.4
4610	Winnipeg RHA	Winnipeg	Man.	652	13.8	47.6	78.6
4630	Interlake RHA	Interlake	Man.	78	14.0	53.5	78.4
4640	Central RHA	Central	Man.	99	13.8	58.9	79.3
47	Saskatchewan		Sask.	995	14.7	54.9	79.0
4704	Regina Qu'Appelle RHA	Regina	Sask.	240	13.8	49.6	79.2
4706	Saskatoon RHA	Saskatoon	Sask.	283	13.0	48.6	79.5
4709	Prince Albert Parkland RHA	Prince Albert	Sask.	75	15.1	60.7	78.5
48	Alberta		Alta.	3,126	10.1	43.4	79.5
4820	Chinook RHA	Chinook	Alta.	151	12.7	51.4	79.4
4821	Palliser Health Region	Palliser	Alta.	97	13.6	51.0	79.0
4822	Calgary Health Region	Calgary	Alta.	1,121	9.2	39.7	80.2
4823	David Thompson RHA	David Thompson	Alta.	282	11.0	47.0	78.5
4824	East Central Health	East Central	Alta.	112	15.6	56.2	79.0
4825	Capital Health	Capital	Alta.	983	10.5	42.4	79.9
4826	Aspen RHA	Aspen	Alta.	176	10.5	51.4	77.8
4827	Peace Country Health	Peace Country	Alta.	128	7.9	47.0	78.9
59	British Columbia		B.C.	4,124	13.3	44.3	80.4
5911	East Kootenay HSDA	East Kootenay	B.C.	79	13.9	46.7	79.4
5912	Kootenay Boundary HSDA	Kootenay Boundary	B.C.	80	16.1	48.1	79.6
5913	Okanagan HSDA	Okanagan	B.C.	313	19.5	56.0	80.6
5914	Thompson/Cariboo HSDA	Thompson/Cariboo	B.C.	214	13.6	46.5	78.6
5921	Fraser East HSDA	Fraser East	B.C.	252	13.7	52.9	79.7
5922	Fraser North HSDA	Fraser North	B.C.	551	10.9	39.2	80.7
5923	Fraser South HSDA	Fraser South	B.C.	615	11.6	45.9	80.9
5931	Richmond HSDA	Richmond	B.C.	174	11.5	36.7	83.4
5932	Vancouver HSDA	Vancouver	B.C.	579	12.6	35.0	80.7
5933	North Shore/Coast Garibaldi HSDA	North Shore	B.C.	267	13.9	43.4	81.4
5941	South Vancouver Island HSDA	South Vancouver Island	B.C.	340	17.6	47.8	80.7
5942	Central Vancouver Island HSDA	Central Vancouver Island	B.C.	240	17.6	53.4	79.6
5943	North Vancouver Island HSDA	North Vancouver Island	B.C.	114	12.8	46.5	79.4
5951	Northwest HSDA	Northwest	B.C.	83	7.7	44.8	77.7
5952	Northern Interior HSDA	Northern Interior	B.C.	149	8.3	42.4	78.1
60	Yukon Territory		Y.T.	30	6.1	35.4	76.8
61	Northwest Territories		N.W.T.	42	4.1	43.1	76.2
62	Nunavut		Nun.	29	2.1	61.6	68.7
	Canada		Canada	31,449	12.6	45.4	79.5

Map Code	Health Region	Low Birth Weight 2001		Infant Mortality 2001		Injury Hospitalization 2002–2003 Age-Standardized	
		%	95% CI	Rate/1,000 live births	95% CI	Rate/100,000	95% CI
10	N.L.	5.3	(4.9–5.7)	4.8	(3.8–6.0)	*545	(525–565)
1011	Eastern, N.L.	*446	(422–470)
1012	Central, N.L.	4.4	(3.7–5.3)	4.7	(2.6–8.0)	*449	(408–490)
1013	Western, N.L.	5.3	(4.4–6.3)	5.1	(2.6–8.9)	*680	(623–737)
11	P.E.I.	4.5	(3.9–5.2)	4.1	(2.5–6.4)	*591	(551–631)
12	N.S.	5.6	(5.3–5.9)	4.9	(4.1–5.8)	*513	(499–527)
1201	Zone 1, N.S.	5.8	(5.1–6.7)	4.4	(2.5–7.2)	*468	(432–505)
1202	Zone 2, N.S.	5.8	(4.9–6.8)	4.7	(2.5–8.1)	*490	(445–535)
1203	Zone 3, N.S.	5.4	(4.6–6.2)	3.0	(1.5–5.4)	577	(532–623)
1204	Zone 4, N.S.	4.8	(4.1–5.7)	5.3	(3.0–8.7)	610	(561–658)
1205	Zone 5, N.S.	5.4	(4.6–6.2)	6.3	(4.0–9.5)	*647	(604–689)
1206	Zone 6, N.S.	5.8	(5.4–6.2)	5.1	(3.9–6.5)	*393	(373–412)
13	N.B.	5.2	(4.9–5.5)	3.9	(3.1–4.8)	*719	(700–738)
1301	Region 1, N.B. (Moncton area)	5.2	(4.6–5.8)	4.7	(3.1–6.8)	591	(557–624)
1302	Region 2, N.B. (Saint John area)	5.1	(4.6–5.7)	3.3	(2.0–5.1)	593	(558–627)
1303	Region 3, N.B. (Fredericton area)	5.0	(4.4–5.6)	2.6	(1.5–4.3)	*751	(710–791)
1306	Region 6, N.B. (Bathurst area)	6.0	(5.0–7.0)	4.3	(2.1–7.8)	*669	(612–726)
24	Que.	5.5	(5.4–5.6)	4.7	(4.4–5.0)	*503	(497–508)
2401	Bas-Saint-Laurent	5.7	(5.1–6.4)	4.6	(3.0–6.8)	*614	(580–648)
2402	Saguenay–Lac-Saint-Jean	5.3	(4.8–5.8)	4.9	(3.5–6.7)	*652	(621–682)
2403	Capitale nationale	5.2	(4.9–5.6)	5.7	(4.6–6.9)	*510	(492–527)
2404	Mauricie et Centre-du-Québec	5.7	(5.3–6.1)	4.4	(3.3–5.7)	569	(547–590)
2405	Estrie	6.1	(5.6–6.7)	5.0	(3.7–6.7)	*625	(597–653)
2406	Montréal	5.6	(5.4–5.8)	4.6	(4.1–5.2)	*371	(363–379)
2407	Outaouais	5.7	(5.2–6.1)	6.1	(4.7–7.7)	*510	(485–535)
2408	Abitibi-Témiscamingue	6.1	(5.4–6.8)	4.9	(3.1–7.2)	*686	(643–729)
2409	Côte-Nord	4.9	(4.2–5.8)	4.6	(2.6–7.6)	*845	(785–904)
2411	Gaspésie–Îles-de-la-Madeleine	5.8	(4.8–6.8)	3.8	(1.8–7.1)	*726	(673–780)
2412	Chaudière–Appalaches	5.0	(4.6–5.4)	4.5	(3.4–5.8)	*531	(508–554)
2413	Laval	5.4	(5.0–5.9)	4.0	(3.0–5.4)	*405	(384–425)
2414	Lanaudière	6.1	(5.6–6.5)	5.9	(4.5–7.4)	*518	(495–541)
2415	Laurentides	5.7	(5.4–6.1)	4.3	(3.3–5.4)	*597	(575–620)
2416	Montérégie	5.3	(5.1–5.5)	3.8	(3.2–4.5)	*490	(478–502)
35	Ont.	5.7	(5.7–5.8)	5.4	(5.2–5.7)	*502	(498–506)
3501	Erie–St. Clair	568	(550–586)
3502	South West	*638	(623–654)
3503	Waterloo Wellington	*505	(488–522)
3504	Hamilton Niagara Haldimand Brant	*528	(516–540)
3505	Central West	*399	(384–415)
3506	Mississauga Halton	*373	(361–386)
3507	Toronto Central	*406	(395–417)
3508	Central	*376	(366–386)
3509	Central East	*455	(444–466)
3510	South East	*496	(477–515)
3511	Champlain	*449	(437–460)
3512	North Simcoe Muskoka	*663	(638–688)
3513	North East	*740	(718–762)
3514	North West	*861	(824–898)
46	Man.	5.2	(5.0–5.4)	6.9	(6.1–7.7)	*700	(685–715)
4610	Winnipeg	5.7	(5.4–6.0)	6.4	(5.4–7.5)	*530	(513–547)
4630	Interlake	4.8	(4.0–5.7)	5.7	(3.3–9.3)	*869	(802–936)
4640	Central	4.4	(3.8–5.1)	5.9	(3.9–8.6)	*807	(752–862)
47	Sask.	5.2	(4.9–5.4)	5.9	(5.2–6.8)	*856	(838–874)
4704	Regina	5.4	(5.0–5.9)	6.4	(4.8–8.3)	*866	(830–903)
4706	Saskatoon	5.5	(5.0–5.9)	5.5	(4.2–7.1)	*609	(581–637)
4709	Prince Albert	4.9	(4.1–5.7)	6.1	(3.8–9.3)	*876	(808–944)
48	Alta.	6.2	(6.1–6.4)	6.5	(6.0–7.0)	*771	(761–781)
4820	Chinook	5.6	(5.1–6.3)	8.0	(5.9–10.5)	*816	(772–860)
4821	Palliser	5.8	(5.1–6.6)	5.9	(3.8–8.8)	*1,057	(993–1,121)
4822	Calgary	6.9	(6.6–7.1)	5.8	(5.1–6.6)	*629	(614–644)
4823	David Thompson	6.0	(5.6–6.5)	6.7	(5.3–8.3)	*1,113	(1,074–1,152)
4824	East Central	5.6	(4.9–6.4)	6.5	(4.2–9.5)	*987	(930–1,044)
4825	Capital	6.2	(5.9–6.5)	6.3	(5.5–7.2)	*605	(590–621)
4826	Aspen	5.6	(5.1–6.2)	9.3	(7.3–11.7)	*1,182	(1,130–1,233)
4827	Peace Country	5.1	(4.5–5.7)	5.9	(4.2–8.2)	*1,243	(1,180–1,307)
59	B.C.	5.2	(5.1–5.3)	4.1	(3.8–4.5)	*618	(611–625)
5911	East Kootenay	5.2	(4.3–6.2)	3.7	(1.7–7.0)	*884	(817–951)
5912	Kootenay Boundary	6.0	(5.0–7.2)	5.3	(2.7–9.4)	*828	(764–892)
5913	Okanagan	5.3	(4.8–5.8)	3.5	(2.4–5.0)	*699	(670–728)
5914	Thompson/Cariboo	5.6	(5.0–6.2)	5.8	(4.0–8.0)	*830	(791–869)
5921	Fraser East	4.9	(4.4–5.3)	3.6	(2.5–5.0)	*652	(621–683)
5922	Fraser North	5.3	(5.0–5.7)	3.2	(2.4–4.1)	*540	(521–560)
5923	Fraser South	5.4	(5.1–5.7)	4.5	(3.6–5.5)	*511	(493–529)
5931	Richmond	5.0	(4.4–5.7)	4.4	(2.8–6.6)	*334	(307–360)
5932	Vancouver	5.4	(5.1–5.8)	3.8	(2.9–4.8)	*437	(420–453)
5933	North Shore	4.6	(4.1–5.1)	3.8	(2.5–5.4)	589	(560–618)
5941	South Vancouver Island	5.1	(4.6–5.6)	4.1	(2.9–5.7)	*640	(614–666)
5942	Central Vancouver Island	4.8	(4.2–5.3)	4.8	(3.2–6.8)	*712	(678–746)
5943	North Vancouver Island	4.9	(4.2–5.7)	5.8	(3.6–9.0)	*885	(828–942)
5951	Northwest	4.0	(3.3–4.7)	5.4	(3.2–8.4)	*1,085	(1,008–1,161)
5952	Northern Interior	5.3	(4.7–5.9)	3.5	(2.1–5.4)	*914	(862–965)
60	Y.T.	4.7	(3.5–6.1)	6.7	(2.9–13.1)	*1,185	(1,046–1,323)
61	N.W.T.	4.5	(3.6–5.5)	8.5	(5.0–13.4)	*1,220	(1,087–1,353)
62	Nun.	7.6	(6.6–8.8)	13.5	(9.2–19.1)
	Canada	5.6	(5.6–5.7)	5.3	(5.1–5.4)	570	(567–572)

	Breastfeeding Practices (Breastfed at Least Four Months)		High School Graduates ¹		Post-Secondary Graduates ¹	
	Age 15–55		Age 25–29		Age 25–54	
	2003	2001	2001	2001	2001	2001
	%		%		%	
Newfoundland and Labrador	34.3	79.3				52.8
Prince Edward Island	46.4	79.8				53.3
Nova Scotia	38.3	84.6				58.0
New Brunswick	25.7	83.7				48.6
Quebec	37.9	84.2				53.7
Ontario	49.0	87.9				57.3
Manitoba	51.7	79.2				50.6
Saskatchewan	51.8	79.5				51.6
Alberta	57.9	83.0				56.8
British Columbia	63.8	86.2				57.7
Yukon Territory	65.3*	85.4				63.1
Northwest Territories	51.7*	77.5				55.8
Nunavut	41.2	64.7				43.0
Canada	48.3	85.3				55.7

	Smoking Status ¹ (Daily or Occasional Smoker)		Changes Over Time in Smoking Behaviour (Smokers Who Became Non-Smokers)		Exposure to Second-Hand Smoke at Home ¹	
	Age 12+	Age 12–19	Age 12+		Age 12+	
	2003	2003	1994–1995 to 2002–2003		2003	
	%		%		%	
Newfoundland and Labrador	24.0	17.0	9.9		13.9	
Prince Edward Island	23.6	11.4*	10.7		11.7	
Nova Scotia	23.5	13.5	9.6		12.5	
New Brunswick	25.3	14.4	10.8		12.8	
Quebec	25.9	20.0	12.3		15.6	
Ontario	22.1	13.6	7.8		9.1	
Manitoba	22.6	14.0	8.3*		10.7	
Saskatchewan	23.8	15.2	11.4		10.7	
Alberta	22.9	13.9	7.7		9.1	
British Columbia	18.7	9.9	8.2		5.6	
Yukon Territory	27.5	15.0*	..		12.6	
Northwest Territories	36.6	31.3	..		15.1	
Nunavut	64.8	56.0*	..		15.3	
Canada	22.9	14.8	9.3		10.5	

	Crimes of Violence		Property Crimes		Unemployment Rate ¹	
	1999	2003	1999	2003	Age 15+	
	Rate/100,000		Rate/100,000		2003	
					%	
Newfoundland and Labrador	900	932	2,478	2,611	16.7	
Prince Edward Island	693	897	3,153	3,598	11.1	
Nova Scotia	1,012	1,199	4,040	3,654	9.3	
New Brunswick	962	991	3,002	3,034	10.6	
Quebec	668	713	3,733	3,269	9.1	
Ontario	853	784	3,576	3,241	7.0	
Manitoba	1,574	1,626	5,089	5,581	5.0	
Saskatchewan	1,610	2,057	5,828	6,612	5.6	
Alberta	1,065	1,100	4,799	5,121	5.1	
British Columbia	1,288	1,206	6,793	6,922	8.1	
Yukon Territory	3,158	3,799	7,187	7,421	..	
Northwest Territories	5,023	6,792	5,844	7,220	..	
Nunavut	5,283	7,943	4,384	7,222	..	
Canada	958	963	4,276	4,121	7.6	

¹ This indicator is available at the regional level in the *Health Indicators* e-publication at www.cihi.ca/indicators.

Map Code	Health Region	30-Day Acute Myocardial Infarction In-Hospital Mortality Rate 2000–2001 to 2002–2003		30-Day Stroke In-Hospital Mortality Rate 2000–2001 to 2002–2003	
		%	95% CI	%	95% CI
10	N.L.	*24.4	(22.5–26.2)
1011	Eastern, N.L.	*25.1	(22.6–27.7)
1012	Central, N.L.	*24.7	(20.8–28.6)
1013	Western, N.L.	*24.5	(20.3–28.8)
11	P.E.I.	13.0	(10.7–15.3)	20.3	(17.0–23.6)
12	N.S.	*12.8	(12.0–13.7)	*24.5	(23.2–25.9)
1201	Zone 1, N.S.	12.7	(10.4–15.1)	*24.7	(21.4–28.1)
1202	Zone 2, N.S.	13.2	(9.9–16.4)	*25.3	(21.0–29.6)
1203	Zone 3, N.S.	12.9	(10.4–15.4)	*23.4	(19.5–27.3)
1204	Zone 4, N.S.	*15.6	(12.6–18.6)	*22.8	(19.0–26.7)
1205	Zone 5, N.S.	*13.5	(11.5–15.6)	21.2	(18.2–24.2)
1206	Zone 6, N.S.	11.7	(10.1–13.2)	*27.3	(24.6–30.0)
13	N.B.	*12.9	(12.0–13.9)	19.0	(17.6–20.4)
1301	Region 1, N.B. (Moncton area)	10.3	(8.5–12.1)	18.4	(15.6–21.2)
1302	Region 2, N.B. (Saint John area)	12.0	(10.1–13.9)	18.7	(15.5–21.9)
1303	Region 3, N.B. (Fredericton area)	*14.4	(12.4–16.4)	18.8	(15.8–21.8)
1306	Region 6, N.B. (Bathurst area)	*14.7	(11.5–17.9)	14.3	(9.8–18.7)
24	Que.
2401	Bas-Saint-Laurent
2402	Saguenay–Lac-Saint-Jean
2403	Capitale nationale
2404	Mauricie et Centre-du-Québec
2405	Estrie
2406	Montréal
2407	Outaouais
2408	Abitibi-Témiscamingue
2409	Côte-Nord
2411	Gaspésie-Îles-de-la-Madeleine
2412	Chaudière-Appalaches
2413	Laval
2414	Lanaudière
2415	Laurentides
2416	Montérégie
35	Ont.	11.3	(11.0–11.5)	*17.9	(17.6–18.3)
3501	Erie–St. Clair	11.2	(10.3–12.1)	*17.0	(15.6–18.4)
3502	South West	11.5	(10.7–12.3)	*16.5	(15.2–17.8)
3503	Waterloo Wellington	10.9	(9.7–12.0)	18.8	(17.1–20.4)
3504	Hamilton Niagara Haldimand Brant	*10.7	(10.1–11.3)	18.5	(17.5–19.6)
3505	Central West	10.4	(9.2–11.6)	*15.5	(13.6–17.3)
3506	Mississauga Halton	10.8	(9.8–11.9)	17.9	(16.4–19.5)
3507	Toronto Central	11.5	(10.8–12.3)	*17.0	(15.8–18.1)
3508	Central	11.5	(10.8–12.3)	17.6	(16.5–18.7)
3509	Central East	11.6	(10.9–12.3)	*17.5	(16.4–18.5)
3510	South East	12.4	(11.2–13.5)	*21.1	(19.4–22.9)
3511	Champlain	*10.0	(9.2–10.7)	17.6	(16.3–18.8)
3512	North Simcoe Muskoka	11.5	(10.1–12.8)	20.4	(18.5–22.4)
3513	North East	12.4	(11.4–13.4)	*20.4	(18.8–22.0)
3514	North West	12.6	(11.1–14.1)	16.2	(13.7–18.7)
46	Man.	12.2	(11.4–13.1)	*20.7	(19.5–21.9)
4610	Winnipeg	11.7	(10.6–12.7)	*20.3	(18.7–21.9)
4630	Interlake	10.8	(7.8–13.8)	18.0	(13.8–22.1)
4640	Central	10.5	(7.4–13.5)	21.3	(17.3–25.4)
47	Sask.	11.8	(10.9–12.7)	18.9	(17.6–20.2)
4704	Regina	10.1	(8.3–12.0)	*15.1	(12.2–18.0)
4706	Saskatoon	11.3	(9.5–13.2)	18.7	(16.2–21.1)
4709	Prince Albert	11.4	(7.5–15.3)	*23.6	(18.7–28.5)
48	Alta.	*10.2	(9.6–10.8)	*16.9	(16.0–17.8)
4820	Chinook	11.6	(9.2–13.9)	*22.3	(18.7–26.0)
4821	Palliser	11.2	(8.4–14.0)	17.7	(13.4–21.9)
4822	Calgary	*9.1	(8.0–10.1)	*15.1	(13.4–16.8)
4823	David Thompson	10.9	(9.1–12.7)	*22.4	(19.7–25.2)
4824	East Central	11.2	(8.8–13.7)	19.6	(16.1–23.1)
4825	Capital	*9.9	(8.7–11.0)	*14.6	(13.1–16.1)
4826	Aspen	12.4	(9.8–15.0)	19.0	(15.2–22.7)
4827	Peace Country	10.8	(7.6–14.0)	17.9	(13.3–22.5)
59	B.C.
5911	East Kootenay
5912	Kootenay Boundary
5913	Okanagan
5914	Thompson/Cariboo
5921	Fraser East
5922	Fraser North
5923	Fraser South
5931	Richmond
5932	Vancouver
5933	North Shore
5941	South Vancouver Island
5942	Central Vancouver Island
5943	North Vancouver Island
5951	Northwest
5952	Northern Interior
60	Y.T.	13.7	(4.7–22.8)	11.0	(0.1–22.0)
61	N.W.T.	13.6	(3.4–23.8)	22.5	(11.7–33.4)
62	Nun.
Canada		11.4		18.6	

Map Code	Health Region	Acute Myocardial Infarction Readmission Rate 2001–2002 to 2003–2004		Asthma Readmission Rate 2001–2002 to 2003–2004	
		%	95% CI	%	95% CI
10	N.L.	5.6	(3.9–7.4)
1011	Eastern, N.L.	5.3	(3.0–7.6)
1012	Central, N.L.	5.8	(1.7–9.8)
1013	Western, N.L.	7.1	(2.3–11.9)
11	P.E.I.	8.3	(6.1–10.5)	6.6	(4.5–8.6)
12	N.S.	*8.2	(7.4–9.0)	3.8	(2.4–5.3)
1201	Zone 1, N.S.	8.0	(5.7–10.3)	4.7	(1.1–8.3)
1202	Zone 2, N.S.	4.9	(2.0–7.8)	*	
1203	Zone 3, N.S.	7.6	(5.2–10.0)	*	
1204	Zone 4, N.S.	*10.9	(8.2–13.6)	*	
1205	Zone 5, N.S.	7.0	(5.1–8.9)	*	
1206	Zone 6, N.S.	*9.1	(7.8–10.5)	5.0	(2.7–7.3)
13	N.B.	*9.0	(8.0–10.0)	3.3	(1.9–4.7)
1301	Region 1, N.B. (Moncton area)	8.3	(6.1–10.4)	3.3	(0.2–6.3)
1302	Region 2, N.B. (Saint John area)	5.2	(3.1–7.2)	3.7	(0.1–7.3)
1303	Region 3, N.B. (Fredericton area)	*14.0	(11.8–16.3)	2.1	(0.9–4.8)
1306	Region 6, N.B. (Bathurst area)	9.8	(6.9–12.7)	4.6	(1.3–7.9)
24	Que.
2401	Bas-Saint-Laurent
2402	Saguenay–Lac-Saint-Jean
2403	Capitale nationale
2404	Mauricie et Centre-du-Québec
2405	Estrie
2406	Montréal
2407	Outaouais
2408	Abitibi-Témiscamingue
2409	Côte-Nord
2411	Gaspésie–Îles-de-la-Madeleine
2412	Chaudière–Appalaches
2413	Laval
2414	Lanaudière
2415	Laurentides
2416	Montérégie
35	Ont.	7.2	(6.9–7.4)	4.6	(4.2–5.0)
3501	Erie–St. Clair	*8.0	(7.1–8.9)	*2.0	(1.0–3.8)
3502	South West	7.1	(6.3–7.9)	4.3	(2.5–6.1)
3503	Waterloo Wellington	5.9	(4.8–7.0)	4.4	(2.5–6.2)
3504	Hamilton Niagara Haldimand Brant	7.2	(6.5–7.8)	3.7	(2.3–5.1)
3505	Central West	*5.6	(4.4–6.8)	6.0	(4.4–7.5)
3506	Mississauga Halton	*5.7	(4.7–6.8)	*2.3	(0.2–4.4)
3507	Toronto Central	6.1	(5.2–7.1)	4.8	(2.9–6.6)
3508	Central	6.5	(5.6–7.3)	3.8	(2.2–5.4)
3509	Central East	7.4	(6.7–8.1)	4.9	(3.7–6.2)
3510	South East	8.1	(6.9–9.2)	*7.2	(5.3–9.1)
3511	Champlain	7.1	(6.3–8.0)	4.3	(2.7–5.9)
3512	North Simcoe Muskoka	*8.6	(7.4–9.9)	4.3	(2.5–6.2)
3513	North East	*8.4	(7.5–9.3)	5.4	(3.9–6.9)
3514	North West	*9.6	(8.1–11.0)	7.0	(4.6–9.4)
46	Man.
4610	Winnipeg
4630	Interlake
4640	Central
47	Sask.	7.2	(6.3–8.1)	4.4	(3.2–5.6)
4704	Regina	*4.3	(2.4–6.3)	5.0	(2.8–7.2)
4706	Saskatoon	7.5	(5.8–9.1)	4.9	(2.2–7.6)
4709	Prince Albert	8.9	(5.7–12.1)	*	
48	Alta.	*4.9	(4.4–5.5)	4.2	(3.5–5.0)
4820	Chinook	6.0	(3.6–8.4)	4.0	(0.6–7.3)
4821	Palliser	5.4	(2.7–8.1)	*	
4822	Calgary	*4.0	(3.1–5.0)	3.8	(2.3–5.3)
4823	David Thompson	7.1	(5.3–8.8)	4.7	(2.9–6.5)
4824	East Central	6.0	(3.4–8.6)	4.6	(1.9–7.4)
4825	Capital	*3.8	(2.8–4.8)	3.4	(1.6–5.2)
4826	Aspen	5.9	(3.5–8.4)	5.1	(3.2–7.0)
4827	Peace Country	*11.0	(8.2–13.8)	4.6	(1.7–7.6)
59	B.C.	6.4	(5.9–6.9)	*5.8	(5.1–6.6)
5911	East Kootenay	5.7	(2.5–8.9)	6.6	(2.4–10.9)
5912	Kootenay Boundary	9.1	(6.2–12.0)	*	
5913	Okanagan	8.3	(6.6–10.0)	*7.6	(5.5–9.7)
5914	Thompson/Cariboo	8.0	(6.1–9.9)	*7.9	(5.4–10.4)
5921	Fraser East	7.4	(5.6–9.2)	6.4	(3.8–9.1)
5922	Fraser North	5.5	(3.9–7.1)	7.0	(4.6–9.4)
5923	Fraser South	5.8	(4.5–7.1)	5.0	(2.8–7.3)
5931	Richmond	4.9	(2.2–7.7)	*	
5932	Vancouver	*4.4	(2.7–6.1)	4.4	(1.8–7.0)
5933	North Shore	6.1	(4.3–7.8)	3.6	(0.1–7.1)
5941	South Vancouver Island	*4.5	(2.8–6.2)	5.4	(2.6–8.2)
5942	Central Vancouver Island	8.0	(6.2–9.7)	4.9	(1.7–8.0)
5943	North Vancouver Island	6.3	(3.6–9.1)	*	
5951	Northwest	*11.3	(7.8–14.9)	*	
5952	Northern Interior	6.3	(3.7–9.0)	5.8	(1.8–9.8)
60	Y.T.	*		*	
61	N.W.T.	*		*	
62	Nun.
	Canada	6.9		4.7	

Map Code	Health Region	Hysterectomy Readmission Rate 2001–2002 to 2003–2004		Prostatectomy Readmission Rate 2001–2002 to 2003–2004	
		%	95% CI	%	95% CI
10	N.L.	*0.4	(0.1–0.8)	2.6	(1.4–3.8)
1011	Eastern, N.L.	*0.4	(0.2–0.9)	3.1	(1.3–4.9)
1012	Central, N.L.	*		*	
1013	Western, N.L.	*		*	
11	P.E.I.	1.3	(0.6–2.0)	3.1	(1.2–5.0)
12	N.S.	1.0	(0.7–1.3)	*3.0	(2.3–3.6)
1201	Zone 1, N.S.	0.7	(0.3–1.7)	*	
1202	Zone 2, N.S.	*		*	
1203	Zone 3, N.S.	0.8	(0.1–1.5)	*	
1204	Zone 4, N.S.	1.4	(0.5–2.3)	*4.0	(2.5–5.5)
1205	Zone 5, N.S.	0.6	(0.3–1.5)	3.7	(2.1–5.2)
1206	Zone 6, N.S.	1.5	(1.0–1.9)	2.7	(1.5–3.9)
13	N.B.	0.7	(0.5–1.0)	2.5	(1.6–3.3)
1301	Region 1, N.B. (Moncton area)	0.9	(0.3–1.4)	1.7	(0.0–3.4)
1302	Region 2, N.B. (Saint John area)	1.2	(0.6–1.8)	2.4	(0.8–3.9)
1303	Region 3, N.B. (Fredericton area)	0.8	(0.1–1.6)	*5.5	(3.5–7.5)
1306	Region 6, N.B. (Bathurst area)	*		*	
24	Que.
2401	Bas-Saint-Laurent
2402	Saguenay–Lac-Saint-Jean
2403	Capitale nationale
2404	Mauricie et Centre-du-Québec
2405	Estrie
2406	Montréal
2407	Outaouais
2408	Abitibi-Témiscamingue
2409	Côte-Nord
2411	Gaspésie–Îles-de-la-Madeleine
2412	Chaudière–Appalaches
2413	Laval
2414	Lanaudière
2415	Laurentides
2416	Montérégie
35	Ont.	1.0	(0.9–1.1)	2.0	(1.8–2.3)
3501	Erie–St. Clair	0.8	(0.5–1.1)	1.8	(0.9–2.7)
3502	South West	1.1	(0.8–1.4)	1.9	(1.1–2.8)
3503	Waterloo Wellington	0.9	(0.5–1.3)	1.8	(0.9–2.7)
3504	Hamilton Niagara Haldimand Brant	0.9	(0.7–1.2)	1.7	(1.1–2.3)
3505	Central West	0.8	(0.4–1.3)	1.3	(0.2–2.5)
3506	Mississauga Halton	0.8	(0.4–1.3)	1.8	(0.9–2.7)
3507	Toronto Central	1.3	(0.8–1.8)	2.1	(1.3–2.9)
3508	Central	0.8	(0.5–1.2)	2.7	(2.1–3.3)
3509	Central East	1.0	(0.8–1.3)	2.2	(1.6–2.8)
3510	South East	1.0	(0.6–1.5)	2.5	(1.5–3.5)
3511	Champlain	1.2	(0.9–1.5)	1.6	(0.8–2.4)
3512	North Simcoe Muskoka	1.0	(0.5–1.5)	1.9	(0.7–3.0)
3513	North East	0.8	(0.5–1.1)	2.6	(1.7–3.6)
3514	North West	1.1	(0.4–1.7)	2.0	(0.7–3.3)
46	Man.
4610	Winnipeg
4630	Interlake
4640	Central
47	Sask.	*1.4	(1.1–1.7)	2.4	(1.7–3.2)
4704	Regina	1.3	(0.6–2.0)	3.3	(1.5–5.1)
4706	Saskatoon	*1.8	(1.2–2.4)	3.0	(1.4–4.6)
4709	Prince Albert	*		*	
48	Alta.	*1.3	(1.1–1.5)	2.0	(1.5–2.6)
4820	Chinook	1.2	(0.5–2.0)	*	
4821	Palliser	1.0	(0.1–1.8)	*	
4822	Calgary	1.2	(0.8–1.5)	2.1	(1.2–3.0)
4823	David Thompson	*3.0	(2.5–3.5)	2.3	(0.8–3.9)
4824	East Central	1.4	(0.4–2.3)	*	
4825	Capital	0.7	(0.3–1.0)	1.4	(0.4–2.4)
4826	Aspen	*2.3	(1.5–3.1)	*7.6	(4.8–10.4)
4827	Peace Country	*		*	
59	B.C.	0.9	(0.7–1.0)	2.2	(1.9–2.5)
5911	East Kootenay	*3.2	(2.3–4.2)	*	
5912	Kootenay Boundary	*		*	
5913	Okanagan	0.9	(0.4–1.4)	2.8	(1.6–4.0)
5914	Thompson/Cariboo	1.0	(0.4–1.5)	2.5	(1.1–3.9)
5921	Fraser East	1.1	(0.6–1.7)	1.4	(0.2–2.5)
5922	Fraser North	*0.5	(0.2–0.9)	2.0	(1.1–2.8)
5923	Fraser South	0.6	(0.1–1.0)	2.3	(1.5–3.2)
5931	Richmond	*		*	
5932	Vancouver	0.7	(0.1–1.3)	2.6	(1.8–3.5)
5933	North Shore	0.8	(0.0–1.6)	1.9	(0.5–3.3)
5941	South Vancouver Island	1.3	(0.8–1.9)	2.9	(1.9–3.8)
5942	Central Vancouver Island	0.7	(0.1–1.2)	1.6	(0.5–2.7)
5943	North Vancouver Island	1.1	(0.2–2.0)	2.2	(0.5–4.0)
5951	Northwest	*		*	
5952	Northern Interior	1.2	(0.4–1.9)	4.1	(2.0–6.1)
60	Y.T.	*		*	
61	N.W.T.	*		*	
62	Nun.
	Canada	1.0		2.2	

Map Code	Health Region	Caesarean Sections 2002–2003		Ambulatory Care Sensitive Conditions 2002–2003	
		%	95% CI	Age-Standardized Rate/100,000	95% CI
10	N.L.	24.8	(23.6–26.1)	*668	(646–691)
1011	Eastern, N.L.	26.3	(24.6–28.0)	*555	(528–583)
1012	Central, N.L.	23.9	(21.0–26.8)	*774	(720–829)
1013	Western, N.L.	23.3	(20.0–26.7)	*758	(700–816)
11	P.E.I.	26.7	(24.3–29.1)	*696	(651–740)
12	N.S.	27.3	(26.4–28.3)	*525	(510–540)
1201	Zone 1, N.S.	25.6	(22.8–28.3)	*481	(443–518)
1202	Zone 2, N.S.	22.8	(19.7–25.9)	*608	(556–659)
1203	Zone 3, N.S.	27.6	(24.8–30.5)	*590	(545–635)
1204	Zone 4, N.S.	26.7	(23.6–29.8)	*548	(501–594)
1205	Zone 5, N.S.	29.0	(26.3–31.7)	*770	(724–816)
1206	Zone 6, N.S.	28.1	(26.7–29.5)	*374	(353–394)
13	N.B.	27.8	(26.7–28.8)	*708	(688–727)
1301	Region 1, N.B. (Moncton area)	25.9	(23.9–27.9)	*563	(528–597)
1302	Region 2, N.B. (Saint John area)	25.6	(23.6–27.7)	*531	(497–566)
1303	Region 3, N.B. (Fredericton area)	27.9	(25.8–30.0)	*809	(766–853)
1306	Region 6, N.B. (Bathurst area)	29.9	(26.3–33.5)	*846	(783–910)
24	Que.	20.9	(20.6–21.2)	*385	(381–390)
2401	Bas-Saint-Laurent	23.4	(21.3–25.5)	392	(365–419)
2402	Saguenay–Lac-Saint-Jean	20.1	(18.5–21.7)	*581	(552–611)
2403	Capitale nationale	20.4	(19.3–21.5)	*275	(262–288)
2404	Mauricie et Centre-du-Québec	19.4	(18.2–20.6)	412	(394–430)
2405	Estrie	15.1	(13.8–16.5)	409	(386–432)
2406	Montréal	21.9	(21.3–22.5)	*296	(288–304)
2407	Outaouais	20.4	(19.0–21.8)	*343	(322–364)
2408	Abitibi-Témiscamingue	18.7	(16.6–20.7)	*687	(644–729)
2409	Côte-Nord	25.4	(22.7–28.2)	*672	(620–725)
2411	Gaspésie-Îles-de-la-Madeleine	24.3	(21.0–27.5)	*787	(733–841)
2412	Chaudière-Appalaches	24.1	(22.7–25.5)	*326	(308–344)
2413	Laval	21.4	(20.0–22.8)	*310	(291–328)
2414	Lanaudière	20.6	(19.2–21.9)	*461	(440–483)
2415	Laurentides	18.7	(17.6–19.8)	*505	(485–526)
2416	Montérégie	21.0	(20.3–21.7)	*393	(382–404)
35	Ont.	24.2	(24.0–24.5)	*404	(400–407)
3501	Erie–St. Clair	22.5	(21.5–23.5)	*468	(451–484)
3502	South West	20.2	(19.4–21.0)	416	(403–429)
3503	Waterloo Wellington	23.8	(22.9–24.8)	422	(406–438)
3504	Hamilton Niagara Haldimand Brant	24.4	(23.7–25.2)	*463	(452–475)
3505	Central West	26.4	(25.5–27.3)	*351	(336–366)
3506	Mississauga Halton	22.1	(21.3–22.9)	*300	(289–312)
3507	Toronto Central	26.2	(25.5–27.0)	*268	(258–277)
3508	Central	24.6	(23.9–25.2)	*260	(251–268)
3509	Central East	25.8	(25.1–26.5)	393	(382–403)
3510	South East	24.0	(22.7–25.3)	*490	(470–510)
3511	Champlain	24.0	(23.2–24.7)	*328	(317–338)
3512	North Simcoe Muskoka	24.1	(22.8–25.5)	*568	(545–591)
3513	North East	26.5	(25.3–27.7)	*707	(686–728)
3514	North West	21.7	(20.1–23.2)	*763	(728–798)
46	Man.	19.0	(18.3–19.7)	*445	(433–457)
4610	Winnipeg	19.4	(18.4–20.3)	*333	(319–347)
4630	Interlake	18.2	(15.5–20.8)	*614	(559–669)
4640	Central	19.1	(17.0–21.3)	*539	(492–586)
47	Sask.	19.8	(19.0–20.5)	*627	(611–643)
4704	Regina	17.6	(16.2–19.1)	*683	(648–717)
4706	Saskatoon	21.1	(19.7–22.5)	411	(386–436)
4709	Prince Albert	15.4	(13.2–17.6)	*553	(500–606)
48	Alta.	23.4	(23.0–23.9)	*434	(426–442)
4820	Chinook	20.4	(18.6–22.2)	*663	(621–705)
4821	Palliser	18.1	(16.0–20.3)	*608	(558–657)
4822	Calgary	24.7	(24.0–25.4)	*306	(294–317)
4823	David Thompson	24.3	(22.9–25.7)	*707	(674–739)
4824	East Central	27.8	(25.3–30.3)	*701	(652–749)
4825	Capital	22.8	(22.1–23.6)	*268	(257–279)
4826	Aspen	23.3	(21.6–25.0)	*754	(712–796)
4827	Peace Country	22.0	(20.2–23.9)	*885	(828–942)
59	B.C.	27.9	(27.4–28.3)	*323	(317–329)
5911	East Kootenay	27.9	(24.5–31.3)	*531	(480–583)
5912	Kootenay Boundary	29.3	(25.5–33.2)	429	(383–475)
5913	Okanagan	26.7	(25.0–28.5)	*390	(368–412)
5914	Thompson/Cariboo	30.3	(28.1–32.4)	*450	(422–478)
5921	Fraser East	26.4	(24.8–28.0)	*390	(365–415)
5922	Fraser North	26.9	(25.7–28.0)	*274	(259–288)
5923	Fraser South	28.4	(27.4–29.5)	*265	(251–278)
5931	Richmond	27.7	(25.5–30.0)	*187	(166–209)
5932	Vancouver	27.1	(25.9–28.3)	*238	(225–252)
5933	North Shore	26.9	(25.1–28.7)	*251	(231–270)
5941	South Vancouver Island	32.7	(30.9–34.5)	*247	(229–266)
5942	Central Vancouver Island	27.6	(25.6–29.6)	408	(383–434)
5943	North Vancouver Island	26.1	(23.4–28.8)	447	(409–486)
5951	Northwest	30.2	(27.4–33.1)	*615	(556–673)
5952	Northern Interior	27.7	(25.4–29.9)	*516	(477–555)
60	Y.T.	22.4	(17.7–27.1)	*593	(495–692)
61	N.W.T.	22.5	(19.3–25.8)	*837	(721–954)
62	Nun.
Canada		23.7	(23.5–23.8)	416	(414–418)

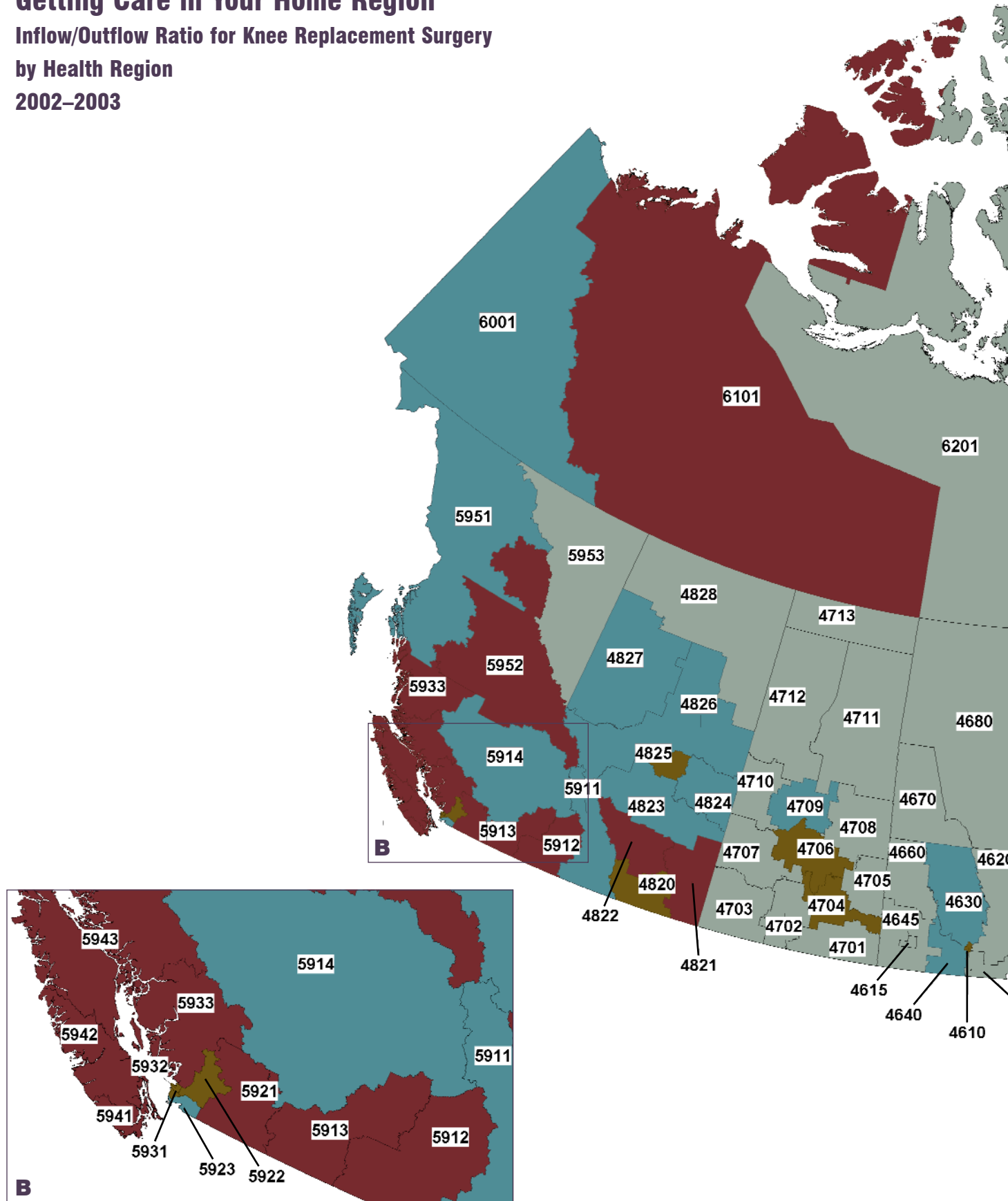
Map Code	Health Region	Hip Fracture Hospitalization 2002–2003		In-Hospital Hip Fracture Rate 2001–2002 to 2003–2004	
		Age-Standardized Rate/100,000	95% CI	Rate/1,000	95% CI
10	N.L.	563	(508–619)	0.8	(0.5–1.1)
1011	Eastern, N.L.	593	(519–668)	0.6	(0.2–1.0)
1012	Central, N.L.	450	(343–558)	0.9	(0.2–1.5)
1013	Western, N.L.	*417	(298–535)	1.4	(0.7–2.1)
11	P.E.I.	609	(506–713)	1.0	(0.5–1.5)
12	N.S.	525	(489–562)	*1.2	(1.0–1.3)
1201	Zone 1, N.S.	536	(447–626)	0.9	(0.4–1.3)
1202	Zone 2, N.S.	631	(507–754)	1.2	(0.6–1.8)
1203	Zone 3, N.S.	485	(390–580)	1.3	(0.8–1.9)
1204	Zone 4, N.S.	511	(407–615)	0.9	(0.4–1.4)
1205	Zone 5, N.S.	*730	(622–837)	1.0	(0.6–1.5)
1206	Zone 6, N.S.	*355	(303–407)	*1.4	(1.1–1.8)
13	N.B.	566	(523–610)	0.9	(0.7–1.1)
1301	Region 1, N.B. (Moncton area)	531	(450–613)	0.7	(0.4–1.1)
1302	Region 2, N.B. (Saint John area)	628	(537–719)	*1.4	(1.0–1.8)
1303	Region 3, N.B. (Fredericton area)	*664	(561–767)	0.9	(0.5–1.3)
1306	Region 6, N.B. (Bathurst area)	*301	(204–397)	0.7	(0.0–1.3)
24	Que.	*492	(479–505)
2401	Bas-Saint-Laurent	*437	(369–506)
2402	Saguenay–Lac-Saint-Jean	*420	(351–488)
2403	Capitale nationale	545	(500–590)
2404	Mauricie et Centre-du-Québec	*481	(434–528)
2405	Estrie	495	(432–557)
2406	Montréal	*491	(466–515)
2407	Outaouais	526	(448–604)
2408	Abitibi-Témiscamingue	591	(476–707)
2409	Côte-Nord	467	(325–609)
2411	Gaspésie–Îles-de-la-Madeleine	*432	(332–531)
2412	Chaudière–Appalaches	*440	(386–495)
2413	Laval	*466	(404–528)
2414	Lanaudière	*424	(360–487)
2415	Laurentides	497	(436–559)
2416	Montérégie	512	(477–547)
35	Ont.	*567	(555–578)	*0.7	(0.6–0.7)
3501	Erie–St. Clair	539	(493–585)	*0.5	(0.3–0.7)
3502	South West	*689	(647–731)	0.7	(0.5–0.9)
3503	Waterloo Wellington	555	(506–605)	0.6	(0.4–0.9)
3504	Hamilton Niagara Haldimand Brant	517	(487–547)	0.7	(0.5–0.8)
3505	Central West	*437	(386–488)	0.6	(0.3–0.9)
3506	Mississauga Halton	545	(498–592)	0.6	(0.4–0.8)
3507	Toronto Central	504	(470–537)	0.7	(0.6–0.9)
3508	Central	488	(455–521)	0.6	(0.4–0.8)
3509	Central East	485	(455–515)	*0.6	(0.4–0.7)
3510	South East	608	(554–662)	0.9	(0.6–1.1)
3511	Champlain	552	(515–588)	0.8	(0.6–1.0)
3512	North Simcoe Muskoka	*822	(749–895)	0.8	(0.5–1.0)
3513	North East	565	(515–616)	0.8	(0.6–1.0)
3514	North West	*656	(571–741)	0.7	(0.4–1.1)
46	Man.	547	(514–581)
4610	Winnipeg	*401	(363–439)
4630	Interlake	*834	(671–996)
4640	Central	*720	(596–845)
47	Sask.	*609	(573–646)	0.9	(0.7–1.0)
4704	Regina	586	(511–661)	0.8	(0.4–1.1)
4706	Saskatoon	504	(438–570)	1.1	(0.8–1.5)
4709	Prince Albert	520	(401–638)	*1.8	(1.1–2.5)
48	Alta.	549	(524–573)	*1.1	(1.0–1.2)
4820	Chinook	*432	(347–517)	*1.7	(1.3–2.2)
4821	Palliser	602	(479–725)	1.1	(0.6–1.5)
4822	Calgary	519	(477–562)	*1.1	(0.9–1.3)
4823	David Thompson	*667	(583–751)	*1.5	(1.1–1.8)
4824	East Central	616	(511–720)	*1.6	(1.2–2.0)
4825	Capital	*494	(453–535)	0.8	(0.6–1.0)
4826	Aspen	*761	(640–881)	1.1	(0.7–1.6)
4827	Peace Country	477	(345–608)	0.9	(0.4–1.5)
59	B.C.	549	(531–567)	*1.0	(0.9–1.1)
5911	East Kootenay	666	(520–812)	1.1	(0.5–1.8)
5912	Kootenay Boundary	555	(439–672)	1.2	(0.7–1.8)
5913	Okanagan	*486	(435–537)	0.9	(0.6–1.1)
5914	Thompson/Cariboo	585	(498–672)	0.8	(0.4–1.2)
5921	Fraser East	612	(535–688)	0.7	(0.4–1.1)
5922	Fraser North	600	(543–657)	1.0	(0.7–1.2)
5923	Fraser South	592	(538–646)	*1.3	(1.1–1.6)
5931	Richmond	461	(374–547)	1.3	(0.8–1.8)
5932	Vancouver	510	(463–557)	1.0	(0.8–1.2)
5933	North Shore	525	(457–593)	0.7	(0.3–1.0)
5941	South Vancouver Island	*339	(299–379)	0.9	(0.7–1.2)
5942	Central Vancouver Island	*686	(611–762)	1.0	(0.6–1.3)
5943	North Vancouver Island	625	(500–751)	*1.9	(1.4–2.5)
5951	Northwest	719	(507–931)	1.5	(0.6–2.3)
5952	Northern Interior	*822	(654–989)	1.2	(0.6–1.8)
60	Y.T.	821	(378–1263)	*3.4	(1.9–4.9)
61	N.W.T.	811	(369–1253)	*
62	Nun.
Canada		544	(538–551)	0.8

Getting Care in Your Home Region

Inflow/Outflow Ratio for Knee Replacement Surgery

by Health Region

2002–2003



Map Code	Health Region	Hip Replacement 2002–2003		Knee Replacement 2002–2003	
		Age-Standardized Rate/100,000	95% CI	Age-Standardized Rate/100,000	95% CI
10	N.L.	*50.3	(44.5–56.1)	*48.6	(42.9–54.3)
1011	Eastern, N.L.	53.8	(45.9–61.8)	*42.4	(35.2–49.5)
1012	Central, N.L.	*41.3	(30.1–52.5)	*55.2	(42.4–68.1)
1013	Western, N.L.	*40.4	(27.9–53.0)	*53.4	(39.3–67.6)
11	P.E.I.	71.8	(58.6–85.1)	85.5	(71.1–99.9)
12	N.S.	*69.8	(64.9–74.8)	*97.5	(91.7–103.4)
1201	Zone 1, N.S.	73.3	(60.3–86.3)	*92.9	(78.2–107.5)
1202	Zone 2, N.S.	*92.1	(73.8–110.4)	*102.3	(83.1–121.6)
1203	Zone 3, N.S.	*76.3	(61.9–90.8)	86.7	(71.1–102.3)
1204	Zone 4, N.S.	59.6	(45.8–73.4)	*98.5	(81.1–115.9)
1205	Zone 5, N.S.	56.8	(45.9–67.8)	*109.0	(93.5–124.5)
1206	Zone 6, N.S.	67.5	(59.3–75.6)	*94.8	(85.0–104.5)
13	N.B.	63.1	(57.9–68.4)	*90.5	(84.2–96.8)
1301	Region 1, N.B. (Moncton area)	*72.4	(61.5–83.3)	85.0	(73.0–97.1)
1302	Region 2, N.B. (Saint John area)	71.6	(59.9–83.2)	*111.2	(96.8–125.5)
1303	Region 3, N.B. (Fredericton area)	64.2	(52.7–75.7)	*116.8	(101.1–132.4)
1306	Region 6, N.B. (Bathurst area)	*43.5	(30.3–56.7)	*50.3	(36.1–64.5)
24	Que.	*42.3	(40.9–43.6)	*43.7	(42.3–45.1)
2401	Bas-Saint-Laurent	*51.3	(42.6–60.0)	*45.7	(37.8–53.6)
2402	Saguenay–Lac-Saint-Jean	*46.0	(38.6–53.3)	69.7	(60.7–78.7)
2403	Capitale nationale	*39.5	(35.2–43.8)	*42.7	(38.3–47.2)
2404	Mauricie et Centre-du-Québec	*42.6	(37.5–47.7)	*49.1	(43.7–54.5)
2405	Estrie	*42.7	(35.9–49.4)	*42.9	(36.1–49.6)
2406	Montréal	*39.7	(37.2–42.3)	*34.3	(31.9–36.7)
2407	Outaouais	*42.7	(35.6–49.8)	*51.4	(43.5–59.4)
2408	Abitibi-Témiscamingue	*40.6	(30.5–50.7)	*36.4	(26.9–45.9)
2409	Côte-Nord	*40.9	(28.2–53.6)	60.5	(45.2–75.8)
2411	Gaspésie–Îles-de-la-Madeleine	*45.0	(32.9–57.1)	*49.0	(37.2–60.8)
2412	Chaudière–Appalaches	*50.2	(43.7–56.7)	*55.0	(48.2–61.8)
2413	Laval	*39.5	(33.5–45.5)	*39.9	(33.9–46.0)
2414	Lanaudière	*37.5	(31.6–43.4)	*37.8	(31.8–43.7)
2415	Laurentides	*38.7	(33.3–44.1)	*40.2	(34.6–45.8)
2416	Montérégie	*45.0	(41.5–48.5)	*46.1	(42.6–49.6)
35	Ont.	*67.2	(65.8–68.6)	*90.2	(88.6–91.9)
3501	Erie–St. Clair	*76.2	(69.9–82.5)	*97.4	(90.2–104.5)
3502	South West	*72.7	(67.7–77.8)	*100.4	(94.4–106.4)
3503	Waterloo Wellington	*69.9	(63.6–76.2)	*86.4	(79.4–93.4)
3504	Hamilton Niagara Haldimand Brant	*72.7	(68.6–76.8)	*97.7	(92.9–102.5)
3505	Central West	*45.0	(39.6–50.4)	*82.6	(75.2–89.9)
3506	Mississauga Halton	*66.6	(61.2–72.0)	*92.3	(85.8–98.7)
3507	Toronto Central	55.7	(51.6–59.7)	*57.7	(53.6–61.9)
3508	Central	64.5	(60.4–68.6)	81.8	(77.1–86.4)
3509	Central East	64.0	(60.1–67.9)	*94.9	(90.1–99.7)
3510	South East	75.8	(68.8–82.7)	*104.4	(96.3–112.5)
3511	Champlain	64.6	(60.1–69.0)	81.3	(76.3–86.3)
3512	North Simcoe Muskoka	*74.5	(66.7–82.2)	*104.6	(95.4–113.8)
3513	North East	59.7	(54.1–65.3)	*87.8	(81.0–94.5)
3514	North West	*85.3	(74.4–96.2)	*133.1	(119.4–146.9)
46	Man.	*67.4	(62.9–71.9)	*97.9	(92.5–103.4)
4610	Winnipeg	62.9	(57.2–68.7)	*90.4	(83.5–97.3)
4630	Interlake	76.5	(58.6–94.3)	*117.4	(95.5–139.3)
4640	Central	53.0	(39.2–66.8)	84.2	(67.1–101.2)
47	Sask.	*80.8	(75.6–85.9)	*89.5	(84.0–94.9)
4704	Regina	57.2	(48.4–66.1)	71.9	(61.8–82.1)
4706	Saskatoon	*104.5	(92.9–116.1)	*115.5	(103.3–127.8)
4709	Prince Albert	*84.3	(65.3–103.3)	65.3	(48.5–82.0)
48	Alta.	*75.1	(71.9–78.2)	*93.9	(90.4–97.5)
4820	Chinook	*81.3	(67.3–95.3)	*116.4	(99.9–133.0)
4821	Palliser	66.6	(51.2–82.1)	89.5	(71.5–107.4)
4822	Calgary	*70.6	(65.3–75.9)	73.3	(67.8–78.7)
4823	David Thompson	*95.7	(84.1–107.2)	*131.9	(118.1–145.6)
4824	East Central	*82.3	(67.3–97.3)	*124.2	(105.6–142.9)
4825	Capital	*73.1	(67.7–78.6)	*92.1	(86.0–98.3)
4826	Aspen	*77.0	(63.8–90.2)	*111.1	(95.2–126.9)
4827	Peace Country	67.0	(50.7–83.3)	*98.6	(78.7–118.5)
59	B.C.	*64.8	(62.5–67.1)	*66.3	(64.0–68.6)
5911	East Kootenay	*83.7	(65.5–101.9)	*113.0	(91.9–134.1)
5912	Kootenay Boundary	73.1	(57.0–89.1)	83.4	(66.1–100.7)
5913	Okanagan	*70.8	(63.1–78.4)	*87.5	(79.1–95.9)
5914	Thompson/Cariboo	68.6	(58.5–78.7)	*90.3	(78.8–101.8)
5921	Fraser East	*75.1	(65.1–85.1)	84.7	(74.2–95.2)
5922	Fraser North	*55.0	(48.8–61.2)	*49.2	(43.3–55.1)
5923	Fraser South	63.3	(57.1–69.4)	*66.3	(60.0–72.5)
5931	Richmond	*41.7	(32.5–50.8)	*41.3	(32.0–50.7)
5932	Vancouver	*43.5	(38.3–48.6)	*34.8	(30.1–39.4)
5933	North Shore	*73.9	(64.6–83.2)	*65.1	(56.3–73.8)
5941	South Vancouver Island	*72.8	(65.1–80.5)	*51.8	(45.3–58.4)
5942	Central Vancouver Island	*75.3	(65.9–84.7)	75.6	(66.6–84.7)
5943	North Vancouver Island	74.5	(59.8–89.2)	82.3	(66.8–97.7)
5951	Northwest	61.4	(41.9–80.8)	60.5	(41.3–79.7)
5952	Northern Interior	73.7	(58.8–88.6)	*98.3	(80.7–115.9)
60	Y.T.	57.3	(21.9–92.7)	76.8	(37.7–115.9)
61	N.W.T.	47.9	(15.1–80.7)	80.5	(37.8–123.2)
62	Nun.	36.0	(2.8–69.3)	84.7	(31.9–137.6)
Canada		61.5	(60.7–62.3)	75.4	(74.5–76.4)

Map Code	Health Region	General/Family Physicians 2002		Certified Specialists 2002	
		Rate/100,000	95% CI	Rate/100,000	95% CI
10	N.L.	113	(104-122)	66	(59-73)
1011	Eastern, N.L.	113	(101-125)	96	(85-108)
1012	Central, N.L.	113	(93-134)	28	(18-38)
1013	Western, N.L.	112	(89-135)	28	(17-39)
11	P.E.I.	87	(71-102)	53	(40-65)
12	N.S.	108	(101-114)	100	(94-107)
1201	Zone 1, N.S.	91	(74-107)s	41	(30-52)
1202	Zone 2, N.S.	88	(68-109)	65	(48-83)
1203	Zone 3, N.S.	89	(71-107)	31	(20-42)
1204	Zone 4, N.S.	88	(69-107)	45	(32-58)
1205	Zone 5, N.S.	105	(88-123)	59	(46-72)
1206	Zone 6, N.S.	128	(117-139)	172	(159-185)
13	N.B.	93	(86-100)	65	(59-70)
1301	Region 1, N.B. (Moncton area)	91	(78-105)	80	(67-92)
1302	Region 2, N.B. (Saint John area)	93	(78-107)	86	(73-100)
1303	Region 3, N.B. (Fredericton area)	85	(71-99)	59	(47-70)
1306	Region 6, N.B. (Bathurst area)	99	(77-120)	43	(29-57)
24	Que.	106	(104-109)	106	(104-108)
2401	Bas-Saint-Laurent	115	(100-130)	72	(60-84)
2402	Saguenay-Lac-Saint-Jean	97	(85-108)	67	(58-77)
2403	Capitale nationale	146	(136-155)	170	(160-180)
2404	Mauricie et Centre-du-Québec	81	(73-89)	62	(55-69)
2405	Estrie	133	(120-146)	122	(110-135)
2406	Montréal	120	(115-124)	204	(198-210)
2407	Outaouais	90	(80-100)	50	(42-58)
2408	Abitibi-Témiscamingue	111	(94-128)	63	(50-75)
2409	Côte-Nord	134	(112-157)	42	(29-55)
2411	Gaspésie-Îles-de-la-Madeleine	162	(137-187)	57	(42-72)
2412	Chaudière-Appalaches	100	(90-110)	54	(47-62)
2413	Laval	86	(77-96)	67	(58-75)
2414	Lanaudière	84	(75-93)	44	(37-50)
2415	Laurentides	90	(82-99)	43	(37-49)
2416	Montérégie	88	(83-94)	59	(54-63)
35	Ont.	85	(83-86)	95	(93-97)
3501	Erie-St. Clair	58	(52-64)	53	(47-59)
3502	South West	82	(76-88)	103	(96-110)
3503	Waterloo Wellington	76	(69-82)	55	(50-61)
3504	Hamilton Niagara Haldimand Brant	72	(68-77)	97	(92-102)
3505	Central West	57	(51-63)	44	(39-49)
3506	Mississauga Halton	72	(67-78)	58	(53-63)
3507	Toronto Central	144	(137-151)	278	(268-287)
3508	Central	82	(77-86)	70	(66-75)
3509	Central East	66	(62-70)	53	(49-57)
3510	South East	101	(92-110)	105	(95-114)
3511	Champlain	106	(100-112)	131	(125-138)
3512	North Simcoe Muskoka	82	(73-91)	51	(44-58)
3513	North East	85	(78-93)	60	(54-66)
3514	North West	95	(83-107)	55	(46-64)
46	Man.	93	(87-98)	87	(82-92)
4610	Winnipeg	99	(91-106)	141	(132-151)
4630	Interlake	75	(55-94)	17	(8-26)
4640	Central	76	(59-93)	10	(4-16)
47	Sask.	97	(91-103)	60	(55-65)
4704	Regina	113	(99-126)	75	(64-86)
4706	Saskatoon	107	(95-119)	128	(115-141)
4709	Prince Albert	107	(83-130)	28	(16-40)
48	Alta.	97	(94-100)	84	(81-87)
4820	Chinook	90	(75-105)	54	(42-66)
4821	Palliser	71	(54-88)	41	(28-54)
4822	Calgary	99	(93-105)	104	(98-110)
4823	David Thompson	89	(78-100)	32	(25-39)
4824	East Central	82	(65-98)	7	(2-12)
4825	Capital	108	(102-115)	121	(114-128)
4826	Aspen	84	(71-98)	4	(1-7)
4827	Peace Country	74	(59-89)	23	(14-31)
59	B.C.	110	(107-114)	90	(87-93)
5911	East Kootenay	122	(98-147)	26	(15-38)
5912	Kootenay Boundary	132	(107-158)	47	(32-63)
5913	Okanagan	105	(94-116)	78	(68-88)
5914	Thompson/Cariboo	97	(84-110)	48	(39-57)
5921	Fraser East	88	(76-100)	40	(33-48)
5922	Fraser North	81	(73-88)	68	(61-75)
5923	Fraser South	75	(68-82)	45	(40-51)
5931	Richmond	86	(73-100)	66	(54-78)
5932	Vancouver	172	(161-183)	260	(247-273)
5933	North Shore	120	(107-133)	72	(62-82)
5941	South Vancouver Island	148	(136-161)	123	(111-135)
5942	Central Vancouver Island	106	(93-119)	62	(52-71)
5943	North Vancouver Island	114	(95-134)	61	(46-75)
5951	Northwest	138	(113-164)	23	(13-33)
5952	Northern Interior	98	(83-114)	42	(32-53)
60	Y.T.	159	(114-204)	13	(0-26)
61	N.W.T.	72	(47-98)	39	(20-58)
62	Nun.	35	(13-56)	*	
	Canada	96	(95-98)	93	(92-94)

Map Code	Health Region	Hysterectomy 2002–2003		Bypass Surgery 2002–2003	
		Age-Standardized Rate/100,000	95% CI	Age-Standardized Rate/100,000	95% CI
10	N.L.	*503	(473–534)	*142.2	(130.9–153.5)
1011	Eastern, N.L.	*477	(437–517)	*148.5	(132.9–164.0)
1012	Central, N.L.	*482	(413–551)	*126.5	(103.8–149.3)
1013	Western, N.L.	*629	(541–717)	116.6	(92.1–141.2)
11	P.E.I.	*628	(558–698)	79.9	(63.5–96.2)
12	N.S.	*528	(504–552)	*119.9	(112.3–127.5)
1201	Zone 1, N.S.	*529	(461–597)	*134.2	(113.9–154.6)
1202	Zone 2, N.S.	*639	(547–730)	102.3	(79.8–124.7)
1203	Zone 3, N.S.	*709	(623–794)	109.9	(89.4–130.3)
1204	Zone 4, N.S.	*507	(431–584)	79.2	(60.5–98.0)
1205	Zone 5, N.S.	*672	(598–746)	*159	(136.7–181.3)
1206	Zone 6, N.S.	*415	(383–447)	*112.3	(100.0–124.6)
13	N.B.	*654	(624–684)	*80.3	(73.3–87.3)
1301	Region 1, N.B. (Moncton area)	*655	(595–715)	*79	(65.2–92.8)
1302	Region 2, N.B. (Saint John area)	*532	(476–587)	90.8	(75.2–106.3)
1303	Region 3, N.B. (Fredericton area)	*435	(384–486)	78.9	(64.0–93.8)
1306	Region 6, N.B. (Bathurst area)	*1055	(943–1166)	78.6	(58.3–98.9)
24	Que.	*369	(363–376)	*96.8	(94.4–99.2)
2401	Bas-Saint-Laurent	*610	(554–666)	97	(83.2–110.8)
2402	Saguenay–Lac-Saint-Jean	*703	(652–754)	81.7	(70.5–92.9)
2403	Capitale nationale	*410	(386–434)	*106.8	(98.5–115.0)
2404	Mauricie et Centre-du-Québec	*464	(432–496)	*103.4	(94.2–112.7)
2405	Estrie	*457	(416–497)	83.3	(72.3–94.3)
2406	Montréal	*233	(222–244)	*83.7	(79.3–88.1)
2407	Outaouais	*336	(305–367)	*72.1	(61.3–82.9)
2408	Abitibi-Témiscamingue	*592	(526–658)	88.4	(71.4–105.4)
2409	Côte-Nord	*423	(360–487)	*120.9	(96.0–145.8)
2411	Gaspésie-Îles-de-la-Madeleine	*516	(446–586)	112.1	(91.2–133.0)
2412	Chaudière-Appalaches	*506	(470–542)	100.6	(89.9–111.3)
2413	Laval	*298	(271–326)	93	(82.3–103.7)
2414	Lanaudière	*357	(327–386)	*105.4	(94.2–116.6)
2415	Laurentides	*294	(271–318)	93	(83.3–102.7)
2416	Montérégie	*374	(358–391)	*113.6	(107.2–119.9)
35	Ont.	*351	(346–357)	93.3	(91.4–95.3)
3501	Erie–St. Clair	*522	(493–551)	89.8	(81.6–97.9)
3502	South West	*428	(406–450)	*77.4	(71.2–83.6)
3503	Waterloo Wellington	*413	(388–438)	94.6	(85.9–103.3)
3504	Hamilton Niagara Haldimand Brant	393	(376–410)	*106	(100.1–111.9)
3505	Central West	*270	(251–290)	96.5	(87.3–105.7)
3506	Mississauga Halton	*243	(227–259)	*110	(102.0–118.1)
3507	Toronto Central	*170	(159–182)	*64.8	(59.5–70.0)
3508	Central	*231	(219–243)	85.2	(79.6–90.8)
3509	Central East	382	(367–398)	95.1	(89.5–100.8)
3510	South East	401	(372–431)	109.6	(99.7–119.4)
3511	Champlain	386	(368–404)	81.7	(75.8–87.6)
3512	North Simcoe Muskoka	*432	(399–465)	*110.1	(98.9–121.2)
3513	North East	*617	(583–651)	*103.5	(94.9–112.1)
3514	North West	*408	(366–450)	*106.9	(92.4–121.4)
46	Man.	*411	(392–430)	90.2	(84.0–96.3)
4610	Winnipeg	*339	(316–361)	88.1	(79.9–96.2)
4630	Interlake	409	(336–482)	91.7	(68.8–114.6)
4640	Central	*510	(434–585)	79	(59.6–98.5)
47	Sask.	*468	(445–490)	*106.6	(99.5–113.8)
4704	Regina	*320	(283–356)	*135	(118.5–151.6)
4706	Saskatoon	*501	(459–544)	84.2	(71.7–96.7)
4709	Prince Albert	*301	(236–366)	78.8	(56.4–101.3)
48	Alta.	*396	(385–408)	*88	(83.9–92.0)
4820	Chinook	*554	(490–619)	79.6	(63.2–96.0)
4821	Palliser	*549	(470–628)	90.6	(69.3–111.9)
4822	Calgary	*317	(300–334)	*84.7	(77.8–91.5)
4823	David Thompson	*524	(480–569)	83.5	(70.7–96.4)
4824	East Central	*427	(361–494)	93	(73.9–112.1)
4825	Capital	*405	(385–426)	91	(83.8–98.2)
4826	Aspen	403	(352–454)	82.4	(66.3–98.4)
4827	Peace Country	392	(333–451)	94.4	(72.0–116.9)
59	B.C.	*375	(365–384)	*74.8	(71.9–77.7)
5911	East Kootenay	*589	(501–677)	86.5	(64.9–108.1)
5912	Kootenay Boundary	*428	(353–504)	*51.3	(35.5–67.1)
5913	Okanagan	*481	(441–521)	*62.1	(53.5–70.6)
5914	Thompson/Cariboo	*658	(601–715)	*60	(49.0–71.0)
5921	Fraser East	*536	(488–583)	81.4	(69.0–93.8)
5922	Fraser North	*312	(289–335)	83.8	(74.6–92.9)
5923	Fraser South	*361	(338–385)	87.9	(79.4–96.4)
5931	Richmond	*211	(179–242)	*62.8	(49.2–76.5)
5932	Vancouver	*215	(197–233)	*51.3	(44.6–58.0)
5933	North Shore	*266	(236–296)	*65.7	(55.2–76.1)
5941	South Vancouver Island	396	(362–430)	*77.5	(67.8–87.2)
5942	Central Vancouver Island	*534	(484–584)	96.1	(83.7–108.5)
5943	North Vancouver Island	410	(346–474)	85.6	(67.2–104.0)
5951	Northwest	*473	(395–550)	98.1	(70.2–126.0)
5952	Northern Interior	*452	(395–509)	86.5	(67.4–105.6)
60	Y.T.	*359	(249–469)	68.8	(27.8–109.8)
61	N.W.T.	*325	(218–431)	*39.6	(12.8–66.3)
62	Nun.	*	
Canada		385	(381–388)	92.8	(91.6–94.0)

Map Code	Health Region	Overall	Bypass Surgery	Inflow/Outflow Ratio 2002–2003 Hip Replacement	Knee Replacement	Hysterectomy
10	N.L.
1011	Eastern, N.L.	1.13	1.71	1.14	1.10	1.07
1012	Central, N.L.	0.87	0.00	0.89	0.99	0.91
1013	Western, N.L.	0.95	0.00	1.10	1.05	1.00
11	P.E.I.	0.95	0.00	0.87	0.93	0.97
12	N.S.
1201	Zone 1, N.S.	0.73	0.00	0.00	0.00	0.82
1202	Zone 2, N.S.	1.32	0.00	1.69	1.70	1.18
1203	Zone 3, N.S.	0.44	0.00	0.00	0.00	0.71
1204	Zone 4, N.S.	0.86	0.00	0.63	0.59	0.90
1205	Zone 5, N.S.	0.94	0.00	1.14	1.07	0.89
1206	Zone 6, N.S.	1.45	3.11	1.66	1.66	1.23
13	N.B.
1301	Region 1, N.B. (Moncton area)	1.13	0.01	1.23	1.15	1.21
1302	Region 2, N.B. (Saint John area)	1.14	4.20	0.96	0.94	0.96
1303	Region 3, N.B. (Fredericton area)	0.95	0.00	1.08	1.10	0.95
1306	Region 6, N.B. (Bathurst area)	0.97	0.00	0.93	0.94	1.00
24	Que.
2401	Bas-Saint-Laurent	0.91	0.02	0.91	0.95	0.98
2402	Saguenay–Lac-Saint-Jean	1.01	1.00	1.01	1.00	1.04
2403	Capitale nationale	1.33	2.22	1.28	1.27	1.24
2404	Mauricie et Centre-du-Québec	0.88	0.01	1.06	1.06	0.92
2405	Estrie	1.05	1.30	0.63	0.62	1.00
2406	Montréal	1.38	2.98	1.46	1.40	1.49
2407	Outaouais	0.81	0.00	0.80	0.88	0.54
2408	Abitibi-Témiscamingue	0.98	0.00	1.03	1.21	1.03
2409	Côte-Nord	0.80	0.00	0.44	0.53	0.77
2411	Gaspésie–Îles-de-la-Madeleine	0.74	0.00	0.67	0.57	0.73
2412	Chaudière–Appalaches	0.77	0.01	0.92	0.96	0.85
2413	Laval	0.79	0.00	0.54	0.76	0.76
2414	Lanaudière	0.70	0.00	0.69	0.63	0.72
2415	Laurentides	0.83	0.01	0.72	0.78	0.54
2416	Montérégie	0.79	0.01	0.70	0.78	0.83
35	Ont.
3501	Erie–St. Clair	0.90	0.00	0.95	0.94	0.88
3502	South West	1.11	2.20	0.96	0.99	1.12
3503	Waterloo Wellington	0.88	0.00	0.96	0.92	0.95
3504	Hamilton Niagara Haldimand Brant	1.01	0.99	0.94	0.95	1.03
3505	Central West	0.77	0.00	0.81	0.72	0.79
3506	Mississauga Halton	0.95	1.18	0.82	1.00	0.78
3507	Toronto Central	1.71	6.11	2.36	2.25	1.93
3508	Central	0.94	0.00	0.85	0.92	1.04
3509	Central East	0.88	0.00	0.78	0.93	0.89
3510	South East	0.99	1.04	1.06	1.02	0.99
3511	Champlain	1.10	1.48	0.99	1.00	1.15
3512	North Simcoe Muskoka	0.90	0.00	0.70	0.67	0.89
3513	North East	0.96	0.97	0.70	0.79	0.96
3514	North West	0.94	0.00	1.00	0.98	0.87
46	Man.
4610	Winnipeg	1.38	1.84	1.70	1.72	1.54
4630	Interlake	0.57	0.00	0.00	0.00	0.32
4640	Central	0.79	0.00	0.50	0.00	0.38
47	Sask.
4704	Regina	1.21	2.06	1.74	1.65	1.25
4706	Saskatoon	1.39	1.77	1.72	1.68	1.58
4709	Prince Albert	0.88	0.00	0.65	0.77	0.46
48	Alta.
4820	Chinook	0.96	0.00	0.98	1.24	1.17
4821	Palliser	0.92	0.00	0.81	1.00	0.86
4822	Calgary	1.09	1.63	1.11	1.07	1.05
4823	David Thompson	0.90	0.00	0.73	0.74	0.81
4824	East Central	0.70	0.00	0.54	0.50	0.16
4825	Capital	1.27	1.63	1.44	1.47	1.29
4826	Aspen	0.73	0.00	0.00	0.00	0.21
4827	Peace Country	0.86	0.00	0.81	0.73	0.98
59	B.C.
5911	East Kootenay	0.72	0.00	0.73	0.68	0.72
5912	Kootenay Boundary	0.88	0.00	0.86	1.02	0.88
5913	Okanagan	1.03	0.00	1.14	1.12	1.11
5914	Thompson/Cariboo	0.94	0.00	0.62	0.59	0.90
5921	Fraser East	0.86	0.00	0.90	0.95	0.90
5922	Fraser North	1.04	1.65	0.93	1.22	0.88
5923	Fraser South	0.77	0.00	0.55	0.68	0.81
5931	Richmond	0.89	0.00	1.48	1.63	0.72
5932	Vancouver	1.67	5.92	2.51	2.06	1.91
5933	North Shore	0.84	0.00	0.63	0.80	0.86
5941	South Vancouver Island	1.15	2.28	0.95	1.00	1.03
5942	Central Vancouver Island	0.83	0.00	0.83	0.83	0.96
5943	North Vancouver Island	0.88	0.00	1.14	1.13	0.93
5951	Northwest	0.87	0.00	0.33	0.25	0.97
5952	Northern Interior	0.92	0.00	0.77	0.82	0.91
60	Y.T.	0.88	0.00	0.00	0.00	0.98
61	N.W.T.	0.98	0.00	0.80	0.93	0.88
62	Nun.
	Canada

	HEALTH PROFESSIONALS †												
			Physicians			Pharmacists	Dentists	Dental Hygienists	Dietitians	Occupational Therapists	Physiotherapists	Chiropractors	Optometrists
	RNs	LPNs	Total	GP/FP	Certified Specialists								
	2003	2003	2003	2003	2003	2003	2003	2003	2003	2003	2003	2003	
N.L.	1,044	523	188	118	69	110	31	15	27	28	38	9	7
P.E.I.	994	448	141	88	54	108	44	49	44	25	38	6	11
N.S.	907	323	209	111	98	108	53	50	43	29	54	10	9
N.B.	958	324	163	98	65	80	37	36	41	30	58	8	13
Que.	832	197	207	104	102	84	54	50	26	38	46	14	16
Ont.	693	209	177	85	92	80	62	61	20	31	48	27	11
Man.	861	207	177	92	85	94	49	50	27	37	50	20	8
Sask.	855	207	153	96	58	115	38	34	24	21	53	18	11
Alta.	755	150	183	99	84	100	55	55	23	35	54	26	11
B.C.	665	105	200	111	89	88	66	49	20	31	56	19	11
Y.T.	923	191	175	162	13	86	70	41	22	29	13
N.W.T.	978	232	102	69	33	47	104	31	28
Nun.	875	..	34	34	0	7
Canada	760	199	187	97	91	87	58	53	24	33	49	21	12

† Rates are per 100,000 population

See Definitions and Data Sources for interpretation of *Physician* rates.

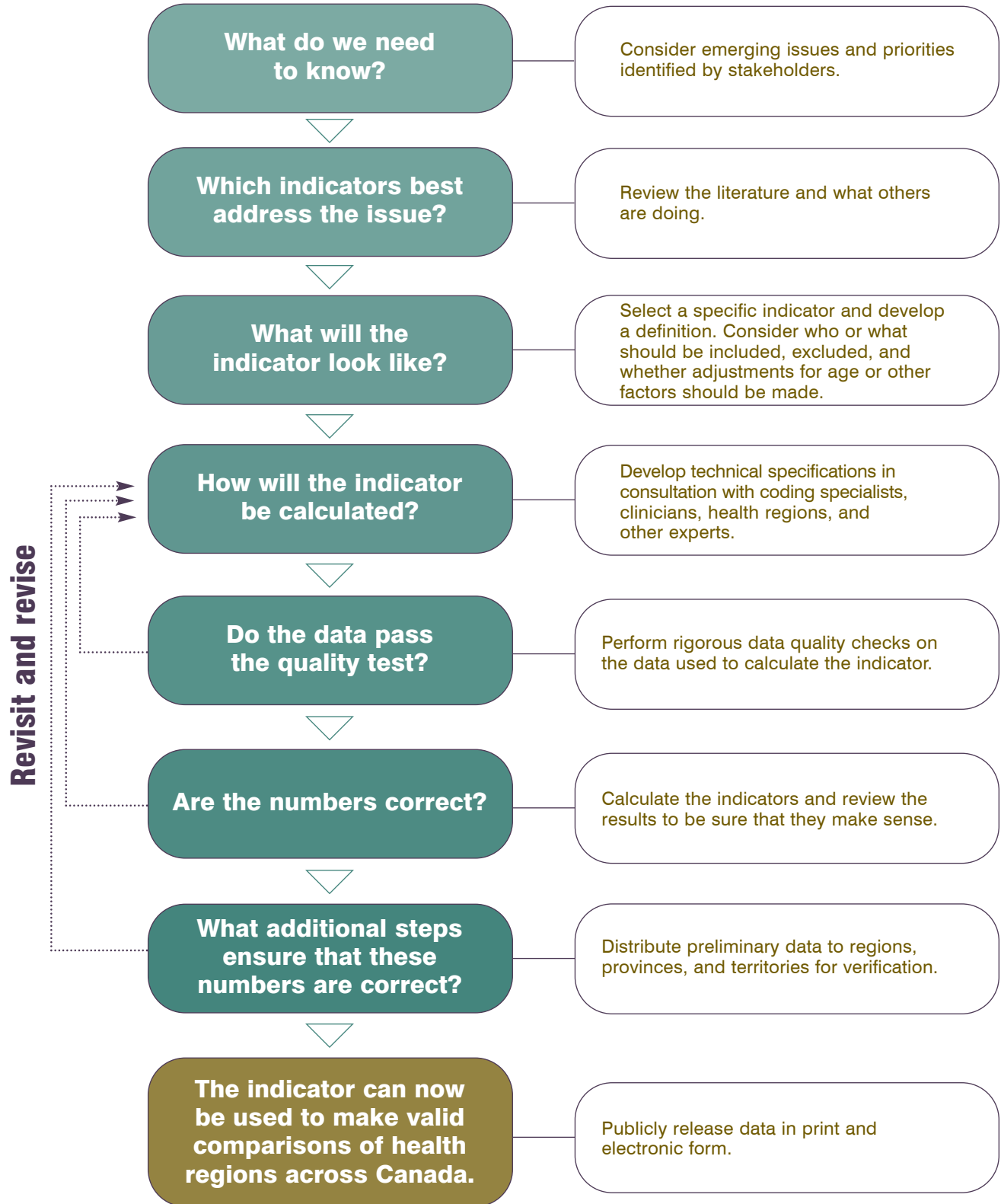
For more information on how professional groups were defined, please contact hpdb@cihi.ca.

	HEALTH EXPENDITURE											
	Total Health Expenditure (\$'000,000), Current Dollars			Total Health Expenditure per Capita (\$), Current Dollars			% of GDP	% Public Sector	Total Health Expenditure by Use of Funds \$ per Capita			
	Actual	Forecast	Forecast	Actual	Forecast	Forecast			Institutional Services	Professional Services	Drugs	Capital and Other Health
	2002	2003	2004	2002	2003	2004	2002	2002	2002	2002	2002	
N.L.	1,943	2,110	2,199	3,741	4,071	4,253	11.7	79.0	1,905	623	564	650
P.E.I.	515	532	541	3,760	3,872	3,926	13.7	71.2	1,659	700	565	836
N.S.	3,291	3,548	3,768	3,521	3,790	4,021	12.1	68.9	1,596	749	607	569
N.B.	2,586	2,720	2,904	3,447	3,622	3,865	12.2	70.9	1,591	718	606	532
Que.	24,525	26,211	27,657	3,294	3,498	3,667	10.0	71.1	1,438	736	615	506
Ont.	44,956	49,425	52,963	3,715	4,033	4,274	9.4	65.7	1,327	987	633	768
Man.	4,551	4,891	5,157	3,938	4,211	4,406	12.3	73.0	1,742	847	517	833
Sask.	3,592	3,780	4,017	3,607	3,801	4,035	10.4	75.7	1,495	790	514	809
Alta.	11,861	12,789	13,687	3,806	4,049	4,275	7.9	71.4	1,412	909	522	963
B.C.	15,586	16,288	16,660	3,787	3,923	3,970	11.5	73.6	1,537	1,069	486	695
Y.T.	155	159	171	5,134	5,203	5,469	12.4	79.1	1,661	955	513	2,006
N.W.T.	269	284	293	6,494	6,732	6,833	9.1	89.7	2,804	1,001	471	2,219
Nun.	212	266	259	7,381	9,144	8,751	22.8	95.5	3,176	857	211	3,136
Canada	114,042	123,004	130,275	3,635	3,885	4,078	9.9	69.7	1,439	898	587	711

	HEALTH SURVEILLANCE								
	HIV + Test Reports		Chlamydia Cases		Tuberculosis Cases		Verotoxigenic <i>E. Coli</i> Cases		
	1999	2003	1998	2002	1998	2002	1993	1997	2001
N.L.	6	11	375	522	8	25	7	1	5
P.E.I.	26	19	144	145	2	25	11	8	17
N.S.	5	11	1,216	1,574	18	9	21	6	29
N.B.	5	11	959	1,313	9	25	24	23	37
Que.	565	622	7,264	11,113	289	282	274	369	336
Ont.	932	1,104	12,458	17,919	724	692	392	423	353
Man.	73	111	2,954	3,331	116	98	81	77	60
Sask.	31	40	2,399	3,613	98	89	50	36	69
Alta.	176	156	5,195	7,336	158	128	153	189	288
B.C.	418	419	4,769	7,621	329	289	157	134	136
Y.T.	1	4	177	141	2	31
N.W.T.	1	1	1,124	597	38	31	3	7	6
Nun.	..	1	..	830	1
Canada	2,234	2,499	39,034	56,055	1,791	1,634	1,173	1,273	1,337

Where Do Indicators Come From?

The Eight Essential Steps



Definitions and Data Sources

Ambulatory care sensitive conditions (ACSC):

Age-standardized inpatient acute care hospitalization rate for conditions where appropriate ambulatory care prevents or reduces the need for hospitalization, per 100,000 population under age 75.

Source: CIHI, Hospital Morbidity Database.

Breastfeeding practices:

Percentage of women aged 15 to 55 who had a baby in the previous five years and breastfed for at least four months.

Source: Statistics Canada, Canadian Community Health Survey, 2003.

Bypass surgery rate (CABG):

Age-standardized rate of coronary artery bypass graft surgery performed on inpatients in acute care hospitals, per 100,000 population aged 20 or over. Variations in bypass surgery rates may be related to utilization of coronary angiography, an alternative intervention for improving blood flow to the heart.

Source: CIHI, Hospital Morbidity Database.

Caesarean section:

Proportion of women delivering babies in acute care hospitals by caesarean section.

Source: CIHI, Hospital Morbidity Database.

Changes over time in smoking behaviour:

Smokers in 1994–1995 who became non-smokers in 2002–2003.

Source: Statistics Canada, National Population Health Survey, contains all panel members with a complete (full) response in Cycle 1 (1994–1995) and Cycle 5 (2002–2003), regardless of their response pattern in the intervening cycles.

Chlamydia:

Number of reported cases of genital chlamydia.

Source: Public Health Agency of Canada, Centre for Infectious Disease Prevention and Control.

Crimes of violence:

The rate of total crimes of violence, per 100,000 population. Violent crimes involve offences that deal with the application, or threat of application, of force to a person. These include homicide, attempted murder, various forms of sexual and non-sexual assault, robbery, and abduction. Traffic incidents that result in death or bodily harm are included under Criminal Code traffic incidents.

Source: Statistics Canada, Canadian Centre for Justice Statistics, Uniform Crime Reporting Survey.

Dependency ratio:

The ratio of the combined child population (aged 0 to 14) and elderly population (aged 65 and over) to the working-age population (aged 15 to 64). This ratio is presented as the number of dependents for every 100 people in the working-age population. Canadians aged 65 and over and those under age 15 are more likely to be socially and/or economically dependent on working-age Canadians, and they may also put additional demands on health services.

Source: Statistics Canada, Demography Division (2002 population estimates).

Exposure to second-hand smoke at home:

Non-smoking population aged 12 and over who reported that at least one person smokes inside their home every day or almost every day.

Source: Statistics Canada, Canadian Community Health Survey, 2003 health file.

Health expenditure:

Health expenditures in current dollars; expenditures per capita; percent of gross domestic product; public-sector expenditures as a percent of total spending; and expenditures by use of funds per capita.

Source: CIHI, National Health Expenditure Database, 2004.

Health professionals:

Number of health professionals (selected professions) per 100,000 population. See *Physicians* for notes about this professional group. Nursing professionals (RNs, LPNs): rates reflect nurses registered with “active-practising” status who are employed in registered or practical nursing. Rates will differ from data published by provincial and territorial regulatory authorities due to the CIHI collection, processing, and reporting methodology. Registered nurses (RNs): data from the territories include secondary registrations. Licensed practical nurses (LPNs): Nunavut data are not available for 2003. Other health professional data reflect personnel regardless of employment status and include the number of licensed pharmacists (excluding non-practicing pharmacists, honorary pharmacists, and certified clerks); licensed dentists (general practice and specialists); registered dental hygienists; active registered physiotherapists; registered chiropractors; active registered optometrists; registered dietitians; and active registered occupational therapists. Personnel per population ratios are revised annually using the most recent Statistics Canada population estimates, and therefore may differ slightly from previously published figures.

Sources: CIHI, Health Personnel Database, Registered Nurses Database, Licensed Practical Nurses Database, Southam Medical Database.

High school graduates:

Population aged 25 to 29 who have a high school graduation certificate. A measure of educational attainment and socio-economic status.

Source: Statistics Canada, 2001 Census (20% sample).

Hip fracture hospitalization:

Age-standardized acute care hospitalization rate for fracture of the hip, per 100,000 population aged 65 and over.

Source: CIHI, Hospital Morbidity Database.

Hip replacement rate:

Age-standardized rate of unilateral or bilateral hip replacement surgery performed on inpatients in acute care hospitals, per 100,000 population.

Source: CIHI, Hospital Morbidity Database.

HIV test reports:

Number of positive HIV test reports by province or territory and year of test.

Source: Public Health Agency of Canada, Centre for Infectious Disease Prevention and Control; *HIV and AIDS in Canada: Surveillance Report to June 30, 2004*.

Hysterectomy rate:

Age-standardized rate of hysterectomy provided to inpatients in acute care hospitals, per 100,000 women aged 20 and over.

Source: CIHI, Hospital Morbidity Database.

Infant mortality:

Infants who die in the first year of life, expressed as a rate per 1,000 live births. A long-established measure, not only of child health, but also of the well-being of a society. The reference period associated with these data reflects the mid-point of a three-year period.

Sources: Statistics Canada, Vital Statistics, Birth and Death Databases.

Inflow/outflow ratio:

A ratio of the number of separations from acute care hospitals within a given region divided by the number of acute care hospital discharges generated by residents of that region. An overall ratio is calculated for discharges associated with any diagnosis or procedure and separately for coronary artery bypass surgery, hip replacement, knee replacement, and hysterectomy procedures. A ratio of less than one indicates that hospital stays utilized by residents of a region exceeded hospital care provided within that region, suggesting an outflow effect. A ratio greater than one indicates hospital stays provided by a region exceeded the quantity of stays utilized by its residents, suggesting an inflow effect. A ratio of one indicates that the volume of hospital discharges in the region is equivalent to that generated by its residents, suggesting that inflow and outflow activity, if it exists at all, is balanced. A ratio of zero is an indication that none of the institutions in the region provided the service and residents received care outside of their region.

Source: CIHI, Hospital Morbidity Database.

In-hospital hip fracture rate:

The risk-adjusted rate of in-hospital hip fracture among acute care inpatients aged 65 years and over, per 1,000 discharges. Rates are based on three years of pooled data.

Source: CIHI, Discharge Abstract Database.

In-hospital 30-day acute myocardial infarction (AMI) mortality rate:

The risk-adjusted rate of all-cause in-hospital death occurring within 30 days of first admission to an acute care hospital with a diagnosis of AMI (for persons aged 20 to 105 years). Rates are based on three years of pooled data.

Source: CIHI, Hospital Morbidity Database.

In-hospital 30-day stroke mortality rate:

The risk-adjusted rate of all-cause in-hospital death occurring within 30 days of first admission to an acute care hospital with a diagnosis of stroke (for persons aged 20 to 105 years). Rates are based on three years of pooled data.

Source: CIHI, Hospital Morbidity Database.

Injury hospitalization:

Age-standardized rate of acute care hospitalization due to injury resulting from the transfer of energy (excludes poisoning and other non-traumatic injuries), per 100,000 population. Cause of injury is reported by the first valid documented external cause of injury code that meets the definition of a traumatic injury.

Source: CIHI, National Trauma Registry.

Knee replacement rate:

Age-standardized rate of unilateral or bilateral knee replacement surgery performed on inpatients in acute care hospitals, per 100,000 population.

Source: CIHI, Hospital Morbidity Database.

Life expectancy:

Life expectancy is the number of years a person would be expected to live, starting from birth (for life expectancy at birth) and similarly for other age groups, on the basis of the mortality statistics for a given observation period. A widely used indicator of the health of a population. Life expectancy measures quantity rather than quality of life. The reference period associated with these data reflects the mid-point of a three-year period.

Sources: Statistics Canada, Vital Statistics, Death Database, and Demography Division (population estimates).

Low birth weight:

Live births less than 2,500 grams, expressed as a percentage of all live births (birth weight known). Low birth weight is a key determinant of infant survival, health, and development. The reference period associated with these data reflects the mid-point of a three-year period.

Sources: Statistics Canada, Vital Statistics, Birth Database.

Physicians:

Physician counts include all active general practitioners, family practitioners, and specialist physicians as of December 31 of the reference year. The data include physicians in clinical and non-clinical practice and exclude residents and physicians who are not licensed to provide clinical practice and have requested to the Business Information Group that their data not be published. For purposes of reporting, physician specialty classification is based on postgraduate certification credentials achieved in Canada. Physicians designated as **family practitioners** include certificants of the College of Family Physicians of Canada (CCFP and CCFP-Emergency Medicine). **Specialist physicians** include certificants of the Royal College of Physicians and Surgeons of Canada and/or the College des médecins du Québec. All other physicians, including non-College of Family Physicians general practitioners, foreign-certified specialists, and other non-certified specialists, are included in the **family practice** counts. It is recognized that physician classification in this manner does not necessarily reflect the services provided by individual physicians. The range of services provided by a physician is subject to provincial licensure rules, medical service plan payment arrangements, and individual practice choices. Therefore, rates may differ from other publications. For example, the Newfoundland Medical Board (NMB) granted full or provisional licenses to 131 non-certified specialists in 2003. These physicians are counted as family practitioners in this report, but are counted as specialist physicians in the annual report of the NMB Registrar. Physician-to-population ratios are used to support health human resource planning. While physician density ratios are useful indicators of changes in physician numbers relative to the population, inference from total numbers or ratios as to the adequacy of provider resources should not be made.

Source: CIHI, Southam Medical Database.

Population estimates:

The number of people living in a geographic area. A population's size and age/sex composition impact the health status of a region and its need for health services. Population data also provide the "denominators" used to calculate rates for most health and social indicators.

Sources: Statistics Canada, Demography Division. Data are derived from the Census and administrative sources on births, deaths, and migration. Population growth for Quebec, Alberta, and British Columbia were supplied by the Institut de la statistique du Québec, Alberta Health and Wellness, and BC Stats, respectively.

Postsecondary graduates:

Persons aged 25 to 54 who have obtained a postsecondary certificate, diploma, or degree. A measure of educational attainment and socio-economic status.

Source: Statistics Canada, 2001 Census (20% sample).

Property crimes:

The rate of total property crimes, per 100,000 population. Property crimes involve unlawful acts with the intent of gaining property but do not involve the use or threat of violence against an individual. Theft, breaking and entering, fraud, and possession of stolen goods are examples of property crimes.

Source: Statistics Canada, Canadian Centre for Justice Statistics, Uniform Crime Reporting Survey.

Readmission rate—acute myocardial infarction (AMI):

The risk-adjusted rate of unplanned readmission following discharge for acute myocardial infarction (for persons aged 15 to 84 years). A case is counted as a readmission if it is for a relevant diagnosis and occurs within 28 days after the index AMI episode of care. Rates are based on three years of pooled data.

Sources: CIHI, Discharge Abstract Database, National Ambulatory Care Reporting System.

Readmission rate—asthma:

The risk-adjusted rate of unplanned readmission following discharge for asthma (for persons aged 15 to 84 years). A case is counted as a readmission if it is for a relevant diagnosis and occurs within 28 days after the index episode of care. Rates are based on three years of pooled data.

Source: CIHI, Discharge Abstract Database, National Ambulatory Care Reporting System.

Readmission rate—hysterectomy:

The risk-adjusted rate of unplanned readmission following discharge for hysterectomy (for women aged 15 to 84 years). A case is counted as a readmission if it is for a relevant diagnosis and occurs within 7 or 28 days after the index episode of care. Rates are based on three years of pooled data.

Source: CIHI, Discharge Abstract Database, National Ambulatory Care Reporting System.

Readmission rate—prostatectomy:

The risk-adjusted rate of unplanned readmission following discharge for prostatectomy (for men aged 15 to 84 years). A case is counted as a readmission if it is for a relevant diagnosis or procedure and occurs within 28 days after the index episode of care. Rates are based on three years of pooled data.

Source: CIHI, Discharge Abstract Database, National Ambulatory Care Reporting System.

Smoking status:

Population aged 12 and over who reported being a current smoker (daily or occasional).

Source: Statistics Canada, Canadian Community Health Survey, 2003.

Tuberculosis:

Number of reported new active and relapsed cases meeting the Canadian tuberculosis case definition.

Source: Public Health Agency of Canada, Centre for Infectious Disease Prevention and Control.

Unemployment rate:

Members of the labour force aged 15 and over who did not have a job during the reference period. The labour force consists of people who are currently employed and people who are unemployed, but were available to work in the reference period and had looked for work in the past four weeks. The reference period refers to a one-week period (from Sunday to Saturday) that usually includes the 15th day of the month. The unemployment rate is a traditional measure of the economy. Unemployed people tend to experience more health problems.

Source: Statistics Canada, Labour Force Survey (special tabulations).

Verotoxigenic *E. coli*:

The number of verotoxigenic *E. coli* cases reported by year. A confirmed case is defined as laboratory confirmation of infection with or without symptoms, with isolation of verotoxin producing *Escherichia coli* from an appropriate clinical specimen. This may be considered an approximate indicator of food-borne illness. It also has implications for water-borne disease issues. *E. coli* 0157 is included in the category of verotoxigenic *E. coli* (VTEC), accounting for more than 90% of cases.

Source: Public Health Agency of Canada, Centre for Infectious Disease Prevention and Control.

General Notes

- The methodology used for these indicators was designed to maximize inter-regional, inter-provincial, and inter-territorial comparability. Data presented include the latest updates available at the time of publication and may differ from those appearing in other reports.
- Health regions are defined by provincial governments as the areas of responsibility for regional health boards (that is, legislated) or as regions of interest to health care authorities. Data from regions with a population of at least 75,000 are reported. This threshold ensures greater stability in rates and reduces the risk of suppression stemming from privacy and confidentiality issues. Boundaries are those that were in effect as of April 2005.
- Data are based on a patient's *region of residence*, which may not be the same as the *region of hospitalization*.
- Hospitalizations include discharges and deaths for inpatients in acute care hospitals for the reference period. Same-day surgery (outpatient) cases and patients admitted to non-acute care hospitals (for example, chronic care, psychiatric, or rehabilitation facilities) are generally not included in the totals.
- ICD-10-CA and the Canadian Classification of Health Interventions (CCI) systems of coding diagnoses and procedures came into effect April 1, 2001, and were adopted by Newfoundland and Labrador, Prince Edward Island, Nova Scotia, parts of Saskatchewan, British Columbia, and Yukon Territory. Ontario, the remainder of Saskatchewan, Alberta, the Northwest Territories, and Nunavut implemented ICD-10-CA/CCI on April 1, 2002, and New Brunswick did so on April 1, 2003. Most of the indicators are based on data up to and including March 31, 2003, and some include data to March 31, 2004. Indicator cases that were originally coded in ICD-10-CA or CCI were extracted on the relevant codes and not the ICD-9 or CCP translations. New and revised coding standards introduced with the ICD-10-CA/CCI classification systems may affect the comparability of rates with those appearing in previous releases for some of the indicators.
- The definition of the ambulatory care sensitive conditions (ACSC) indicator has been revised. Rates are not comparable to those published by CIHI in previous years.
- Beginning with data year 2002–2003, stillbirths are included in the caesarean section rate. This change may affect the comparability of rates with those appearing in previous releases.
- The methodology for calculating the acute myocardial infarction (AMI) readmission and asthma readmission indicators, as well as the codes used to extract the in-hospital hip fracture indicator have been revised. These changes may affect the comparability of rates with those appearing in previous releases.
- The 30-day in-hospital mortality, in-hospital hip fracture and readmission indicator rates are based on a three-year average. Due to differences in the way data are collected, these indicators are not available for all provinces and territories. Therefore, the average rate (for Canada) does not include all provinces and territories.
- Standardized rates are age-adjusted using a direct method of standardization based on the July 1, 1991 population.
- See the *Health Indicators* e-publication (www.cihi.ca/indicators) for diagnosis and procedure codes used to extract the indicator data, technical notes describing the risk-adjustment methodology, and further information on any of the changes noted above.

For more information and detailed technical notes, visit www.cihi.ca or contact indicators@cihi.ca.

Canadian Institute for Health Information
495 Richmond Road, Suite 600
Ottawa, Ontario K2A 4H6

Aussi disponible en français.

© 2005 Canadian Institute for Health Information (CIHI).
All rights reserved.

From COVER to e-COVER

CIHI, in partnership with Statistics Canada, maintains the country's most comprehensive set of regional health indicators. *Health Indicators 2005* provides you with a sample of these. For even more health indicators and related information, take a look at our **Health Indicators** e-publication, available online!

www.cihi.ca/indicators

or

www.statcan.ca

Health Indicators

Access all available CIHI and Statistics Canada health indicators.

Data Tables and Maps

Explore data tables, selecting items such as geography, age group, and sex.

Definitions and Technical Notes

Find definitions, data sources, and methodologies for health indicators.

Highlights

Get a general overview of the state of the health system and the health of Canadians.



Statistics
Canada

Statistique
Canada



Canadian Institute
for Health Information

Institut canadien
d'information sur la santé



www.cihi.ca
www.icis.ca

Taking health information further
À l'avant-garde de l'information sur la santé