

Figure 3. Monthly and seasonal variations of bromodichloromethane (BDCM) concentrations ( $\mu\text{g/L}$ ) for Ottawa (a) & (b), Hull (c) & (d) and Buckingham (e) & (f) ; raw (R)  $\square$ , treated (T)  $\square$ , distribution 1 (D1)  $\square$ , distribution 2 (D2)  $\square$  and distribution 3 (D3)  $\square$ .

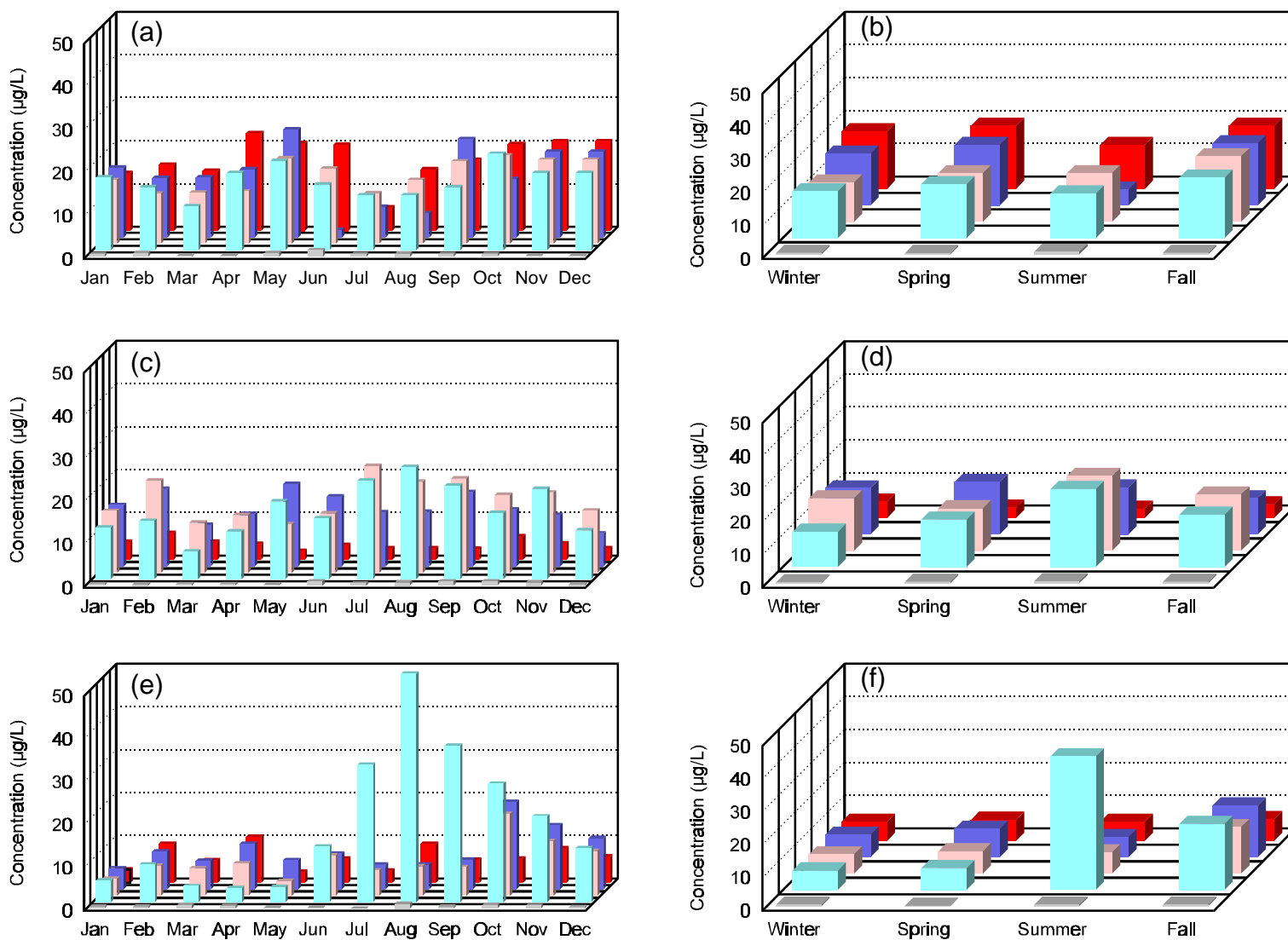


Figure 4. Monthly and seasonal variations of dichloroacetic acid (DCAA) concentrations ( $\mu\text{g/L}$ ) for Ottawa (a) & (b), Hull (c) & (d) and Buckingham (e) & (f) ; raw (R)  $\square$ , treated (T)  $\square$ , distribution 1 (D1)  $\square$ , distribution 2 (D2)  $\square$  and distribution 3 (D3)  $\square$ .