

Figure 5. Monthly and seasonal variations of trichloroacetic acid (TCAA) concentrations ($\mu\text{g/L}$) for Ottawa (a) & (b), Hull (c) & (d) and Buckingham (e) & (f) ; raw (R) \square , treated (T) \square , distribution 1 (D1) \square , distribution 2 (D2) \square and distribution 3 (D3) \square .

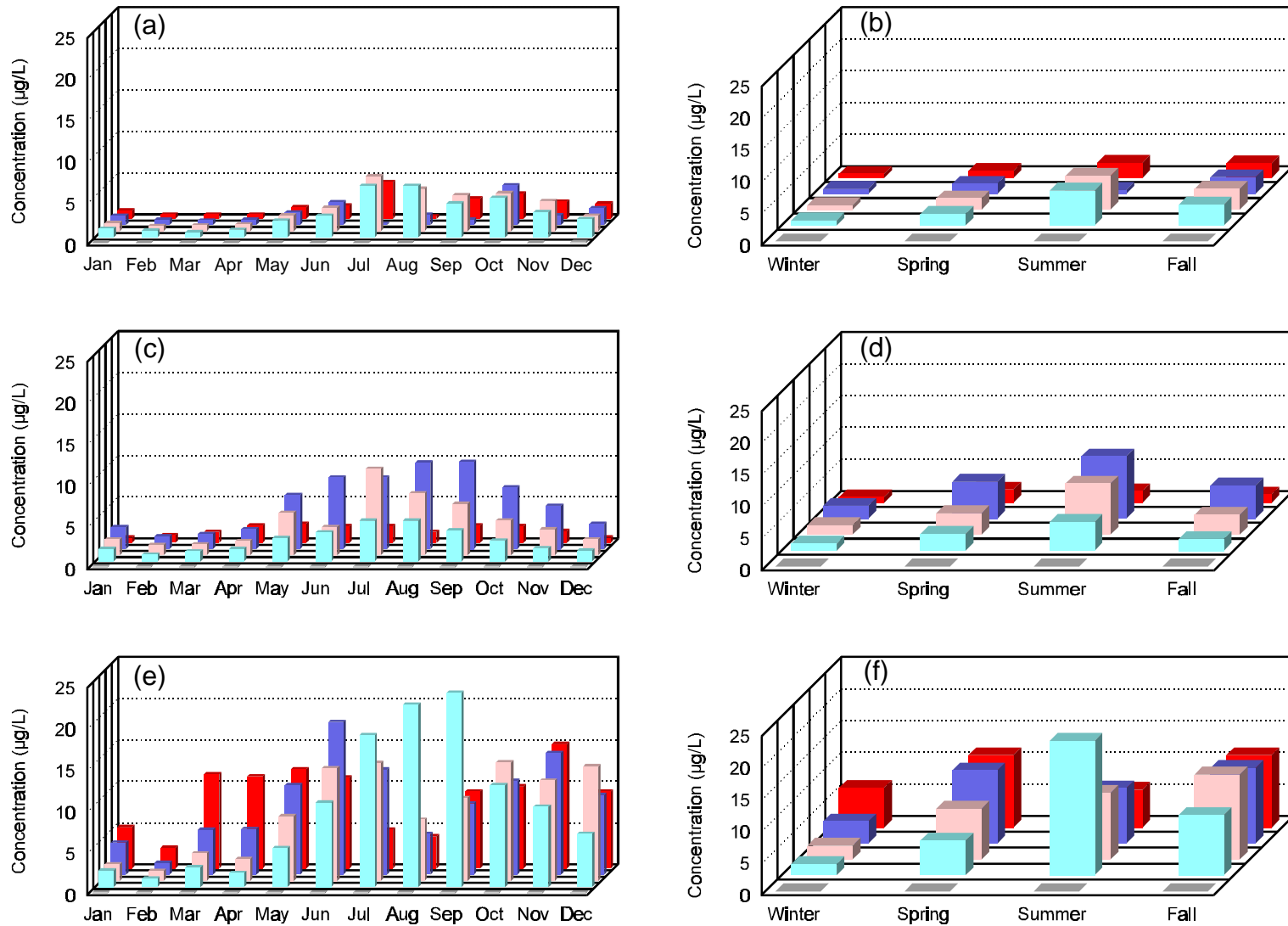


Figure 6. Monthly and seasonal variations of chloral hydrate (CH) concentrations ($\mu\text{g/L}$) for Ottawa (a) & (b), Hull (c) & (d) and Buckingham (e) & (f); raw (R) \square , treated (T) \square , distribution 1 (D1) \square , distribution 2 (D2) \square and distribution 3 (D3) \square .