



Catalogue no. 91-002-XIE

# Quarterly Demographic Estimates



January-March 2006 (preliminary)



Statistics  
Canada

Statistique  
Canada

Canada

## How to obtain more information

Specific inquiries about this product and related statistics or services should be directed to: Demography Division, Statistics Canada, Ottawa, Ontario, K1A 0T6 (telephone: 1 800 263 1136).

For information on the wide range of data available from Statistics Canada, you can contact us by calling one of our toll free numbers. You can also contact us by e-mail or by visiting our website at [www.statcan.ca](http://www.statcan.ca).

National inquiries line **1 800 263-1136**

National telecommunications device for the hearing impaired **1 800 363-7629**

Depository Services Program inquiries **1 800 700-1033**

Fax line for Depository Services Program **1 800 889-9734**

E-mail inquiries [infostats@statcan.ca](mailto:infostats@statcan.ca)

Website [www.statcan.ca](http://www.statcan.ca)

## Information to access the product

This product, Catalogue no. 91-002-XIE, is available for free in electronic format. To obtain a single issue, visit our website at [www.statcan.ca](http://www.statcan.ca) and select Our Products and Services.

## Standards of service to the public

Statistics Canada is committed to serving its clients in a prompt, reliable and courteous manner and in the official language of their choice. To this end, the Agency has developed *standards of service* which its employees observe in serving its clients. To obtain a copy of these service standards, please contact Statistics Canada toll free at 1 800 263-1136. The service standards are also published on [www.statcan.ca](http://www.statcan.ca) under About Statistics Canada > Providing services to Canadians.



Statistics Canada  
Demography Division

# Quarterly Demographic Estimates

January-March 2006 (preliminary)

Published by authority of the Minister responsible for Statistics Canada

© Minister of Industry, 2006

All rights reserved. The content of this electronic publication may be reproduced, in whole or in part, and by any means, without further permission from Statistics Canada, subject to the following conditions: that it be done solely for the purposes of private study, research, criticism, review or newspaper summary, and/or for non-commercial purposes; and that Statistics Canada be fully acknowledged as follows: Source (or "Adapted from", if appropriate): Statistics Canada, year of publication, name of product, catalogue number, volume and issue numbers, reference period and page(s). Otherwise, no part of this publication may be reproduced, stored in a retrieval system or transmitted in any form, by any means—electronic, mechanical or photocopy—or for any purposes without prior written permission of Licensing Services, Client Services Division, Statistics Canada, Ottawa, Ontario, Canada K1A 0T6.

June 2006

Catalogue no. 91-002-XIE, Vol. 20, No. 1

ISSN 1911-0928

Frequency: Quarterly

Ottawa

La version française de cette publication est disponible sur demande (n° 91-002-XIF au catalogue).

---

#### **Note of appreciation**

*Canada owes the success of its statistical system to a long standing partnership between Statistics Canada, the citizens of Canada, its businesses, governments and other institutions. Accurate and timely statistical information could not be produced without their continued cooperation and goodwill.*

# User information

---

## Symbols

The following standard symbols are used in Statistics Canada publications:

- . not available for any reference period
- .. not available for a specific reference period
- ... not applicable
- 0 true zero or a value rounded to zero
- 0<sup>s</sup> value rounded to 0 (zero) where there is a meaningful distinction between true zero and the value that was rounded
- p preliminary
- r revised
- x suppressed to meet the confidentiality requirements of the *Statistics Act*
- E use with caution
- F too unreliable to be published

## Notice to readers

---

Most of the components used to produce preliminary population estimates are estimated using demographic models or based on data sources less complete or reliable, albeit more timely, than those used for updated or final estimates.

# Table of contents

---

<b>Highlights</b>	<b>7</b>
<b>Analysis</b>	<b>8</b>
<b>Related products</b>	<b>11</b>
<b>Statistical tables</b>	
1 Quarterly population estimates, national perspective	15
1-1 Population	15
1-2 Quarterly variation	17
1-3 Quarterly population growth	19
2 Quarterly population estimates, variations and growth, provincial perspective	21
2-1 Canada	21
2-2 Newfoundland and Labrador	22
2-3 Prince Edward Island	23
2-4 Nova Scotia	24
2-5 New Brunswick	25
2-6 Quebec	26
2-7 Ontario	27
2-8 Manitoba	28
2-9 Saskatchewan	29
2-10 Alberta	30
2-11 British Columbia	31
2-12 Yukon Territory	32
2-13 Northwest Territories	33
2-14 Nunavut	34
3 Quarterly population estimates and factors of growth, provincial perspective	35
3-1 Canada	35
3-2 Newfoundland and Labrador	36
3-3 Prince Edward Island	37
3-4 Nova Scotia	38
3-5 New Brunswick	39
3-6 Quebec	40
3-7 Ontario	41

**Table of contents – continued**

3-8	Manitoba	42
3-9	Saskatchewan	43
3-10	Alberta	44
3-11	British Columbia	45
3-12	Yukon Territory	46
3-13	Northwest Territories	47
3-14	Nunavut	48
4	Quarterly estimates of demographic components, provincial perspective	49
4-1	Canada	49
4-2	Newfoundland and Labrador	50
4-3	Prince Edward Island	51
4-4	Nova Scotia	52
4-5	New Brunswick	53
4-6	Quebec	54
4-7	Ontario	55
4-8	Manitoba	56
4-9	Saskatchewan	57
4-10	Alberta	58
4-11	British Columbia	59
4-12	Yukon Territory	60
4-13	Northwest Territories	61
4-14	Nunavut	62
5	Quarterly estimates of demographic components, national perspective	63
5-1	Births	63
5-2	Deaths	65
5-3	Immigrants	67
5-4	Emigrants	69
5-5	Returning emigrants	71
5-6	Net temporary emigrants	73
5-7	Net non-permanent residents	75
5-8	Interprovincial in-migrants	77
5-9	Interprovincial out-migrants	79
5-10	Total growth	81
5-11	Natural increase	83
5-12	Net interprovincial migration	85
5-13	Net international migration	87
5-14	Total net migration	89

## Table of contents – continued

6	Quarterly estimates of interprovincial migrants by province or territory of origin and destination, Canada, January to March 2006	91
---	---	----

### Data quality, concepts and methodology

	Quality of estimates	92
	Explanatory notes for the tables	97

### Appendix

I	Glossary	99
II	Source and remarks	102

### Charts

1.	Quarterly estimates of population growth factors, January to March, 1972 to 2006, Canada	8
2.	Quarterly estimates of population growth factors, January to March, 1972 to 2006, Alberta	9
3.	Quarterly variation of population estimates, Canada, provinces and territories, January to March, 2005 and 2006	10



## Highlights

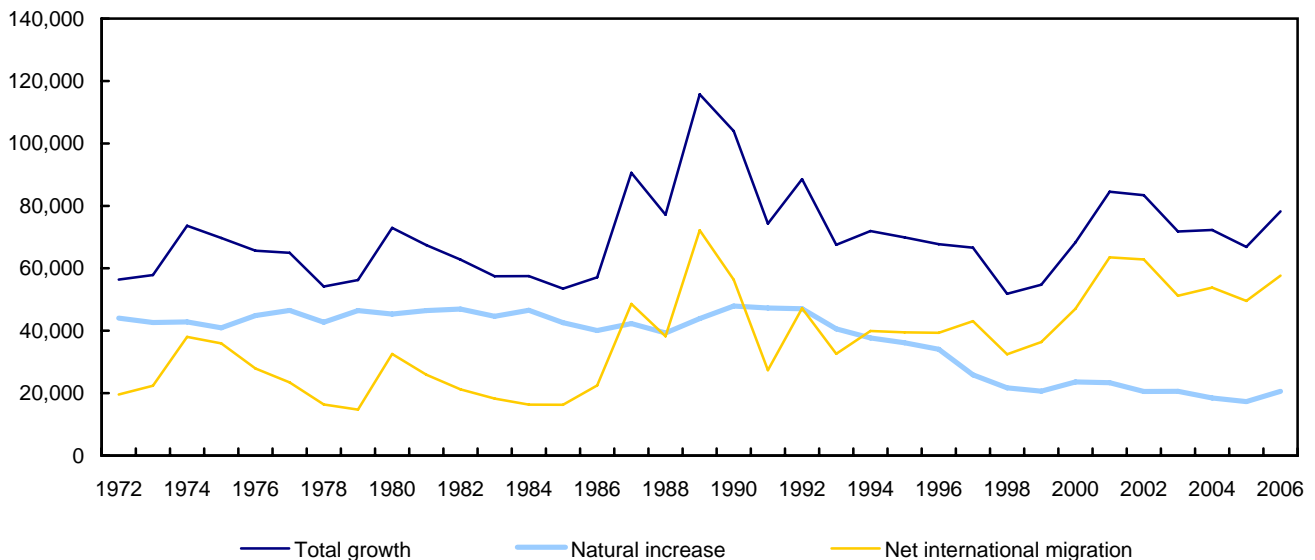
---

- During the first three months of 2006, Canada's population increased by 78,200 persons, reaching 32,501,100 inhabitants by April 1, 2006 and marking the highest first-quarter increase since 2002.
- Net international migration accounted for nearly three-quarters of Canada's population growth during the first quarter of 2006.
- Alberta's economic growth continues to be a powerful magnet for Canadians from all parts of the country. A record first-quarter net interprovincial migration (of 15,600 persons) boosted Alberta's population by 0.78%, a population growth rate that was three times the national average of 0.24%.
- Due to its strong natural growth, Nunavut (0.66%) is the only region to have presented a demographic growth similar to Alberta.
- Aside from Alberta and Nunavut, British Columbia (0.30%) and Ontario (0.25%) are the only regions posting population growth rates higher than the national average. These two provinces owe their growth to a high net international migration.

# Analysis

During the first three months of 2006, Canada's population increased by 78,200 persons, reaching 32,501,100 inhabitants by April 1, 2006 and marking the greatest first-quarter increase since 2002, when the population grew by 83,400 persons.

**Chart 1**  
**Quarterly estimates of population growth factors, January to March, 1972 to 2006, Canada**



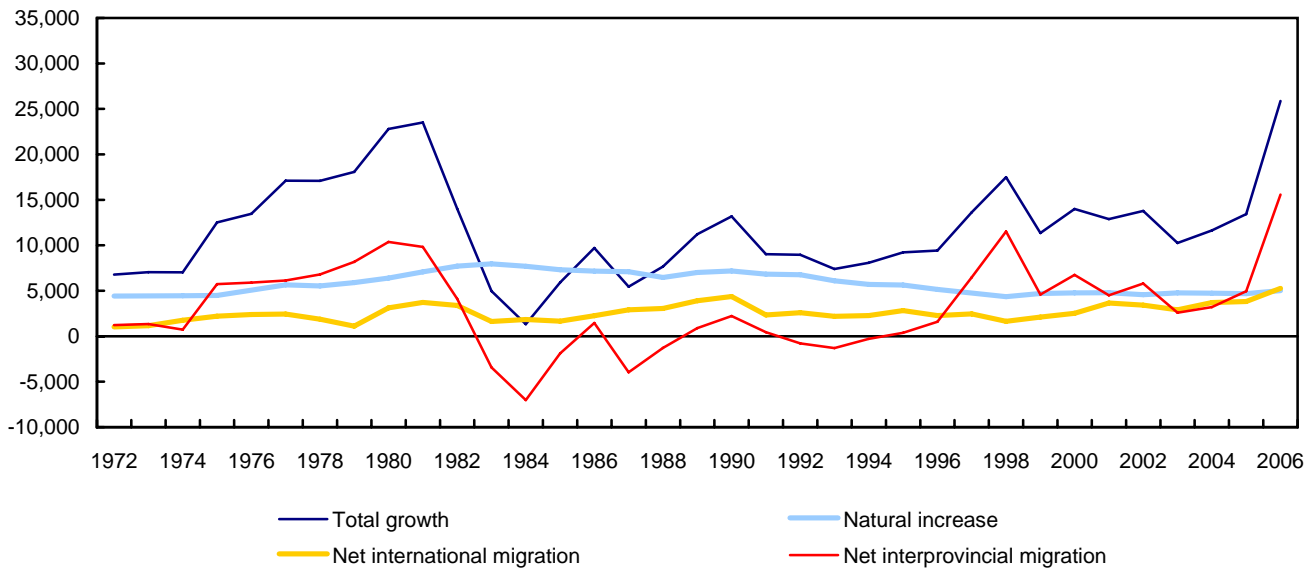
Immigration remains at high levels. While the number of new arrivals did not match the peaks experienced in 2001 and 2002, the first-quarter average over the past three years (55,500) was still higher than that at any time since the early 1990s.

Thus, net international migration continued to be the main engine of population growth in the country. For example, nearly 75% of the 2006 first-quarter population growth was the result of population exchanges between Canada and the rest of the world. This percentage has been higher than 70% since 2001. By comparison, from 1979 to 1984, international migration accounted for only 33.9% of Canada's average first-quarter population growth.

Moreover, natural increase rose substantially during the first three months of 2006. This had not been seen for a first quarter since 1999. Most of this rise occurred in Quebec and, at a lower scale, in Alberta and British Columbia.

Among Canada's provinces and territories, Alberta continued to have the highest population growth rate. During the first quarter of 2006, Alberta's population increased by 0.78%, a rate that was three times higher than the national average of 0.24%. In terms of absolute numbers, Alberta's population growth (of 25,900 persons) is the highest first-quarter increase ever.

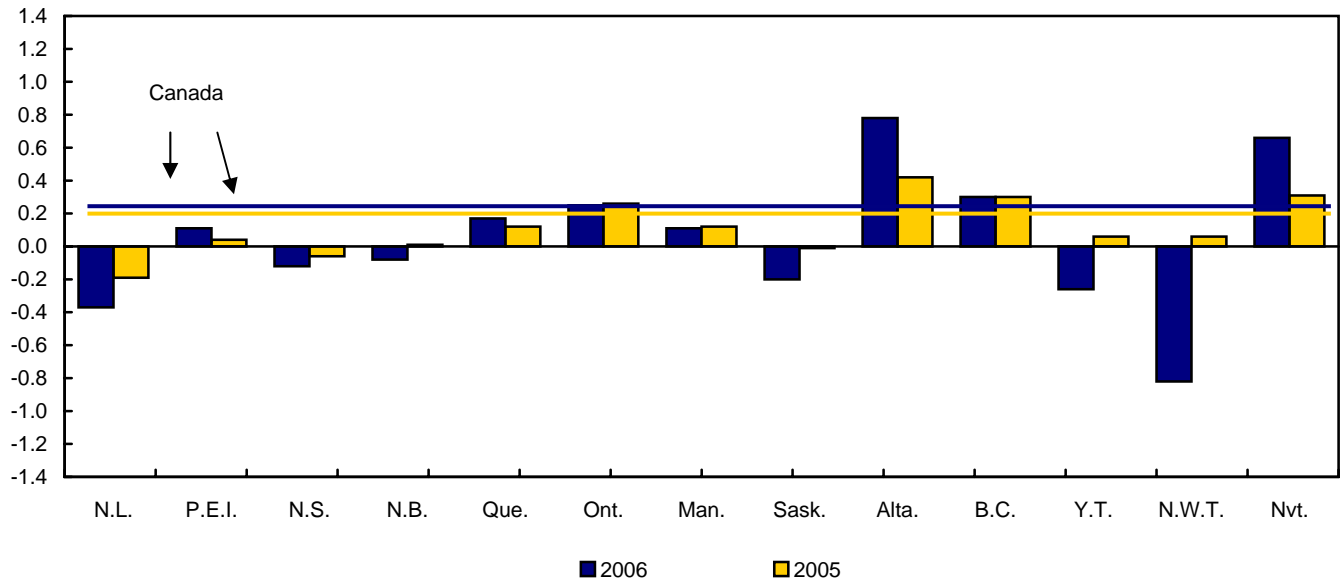
**Chart 2**  
**Quarterly estimates of population growth factors, January to March, 1972 to 2006, Alberta**



Aside from Alberta, Nunavut (0.66%), British Columbia (0.30%) and Ontario (0.25%) had population growth rates higher than the national average of 0.24%. Quebec (0.17%), Manitoba (0.11%) and Prince Edward Island (0.11%) also experienced population growths, although at rates lower than the national average.

Except for Prince Edward Island, all the Atlantic provinces showed a population decrease during the first quarter of 2006. The same was true in Saskatchewan, Yukon and the Northwest Territories. In terms of percentages, the Northwest Territories (-0.82%) experienced the greatest population decrease. Other jurisdictions posting clear population decreases were Newfoundland and Labrador (-0.37%), Yukon Territory (-0.26%) and Saskatchewan (-0.20%).

**Chart 3**  
**Quarterly variation of population estimates, Canada, provinces and territories, January to March, 2005 and 2006**



In a number of Canada's provinces and territories, net international migration offset the exodus to Alberta. During the first quarter of 2006, in nine of the country's 13 jurisdictions, international migration was the most significant factor affecting population growth (see table series 3). For example, international migration accounted for 80% of total population growth in British Columbia. That province also had the country's highest net international migration rates<sup>1</sup> (9.5 per 1,000), ahead of Ontario (9.3 per 1,000) and Manitoba (7.3 per 1,000). In terms of absolute numbers, Manitoba (with 2,200 persons) and Alberta (with 5,300 persons) posted record first-quarter net international migration figures.

While population growth in Alberta was based on interprovincial migration, in Saskatchewan, the Northwest Territories, and particularly Nunavut it was the result of natural increase. In Nunavut, natural increase accounted for 94% of total 2006 first-quarter population growth.

1. Annualized rate. For more details, please refer to the Glossary.

## Related products

---

### Selected publications from Statistics Canada

---

91-209-X	Report on the Demographic Situation in Canada
91-213-X	Annual Demographic Statistics
91-520-X	Population Projections for Canada, Provinces and Territories
91-541-X	Population Projections of Visible Minority Groups, Canada, Provinces and Regions

---

### Selected CANSIM tables from Statistics Canada

---

051-0001	Estimates of population, by age group and sex, Canada, provinces and territories
051-0002	Deaths, by sex and age group, Canada, provinces and territories
051-0004	Components of population growth, Canada, provinces and territories
051-0005	Estimates of population, Canada, provinces and territories
051-0006	Immigrants to Canada, by country of last permanent residence
051-0010	Estimates of population, by marital status, age group and sex, Canada, provinces and territories
051-0011	International migrants, by age group and sex, Canada, provinces, and territories
051-0012	Interprovincial migrants, by age group and sex, Canada, provinces and territories
051-0013	Births by sex, Canada, provinces and territories
051-0017	Interprovincial migrants, Canada, provinces and territories
051-0018	Interprovincial in-, out- and net-migrants, by province or territory
051-0019	Interprovincial migrants, by province or territory of origin and destination
051-0020	Number of non-permanent residents, Canada, provinces and territories
051-0035	Components of population growth, census divisions and census metropolitan areas, 2001 Census boundaries

051-0037	International migration components, Canada, provinces and territories
051-0045	Interprovincial migrants, by province or territory of origin and destination
053-0001	Vital statistics, births, deaths and marriages
102-0502	Deaths, by month, Canada, provinces and territories
102-0503	Deaths, by age and sex, Canada, provinces and territories
102-0504	Deaths, by age group and sex, Canada, provinces and territories
102-0505	Deaths, by marital status, age group and sex, Canada, provinces and territories
102-4502	Live births, by month, Canada, provinces and territories
102-4503	Live births, by age of mother, Canada, provinces and territories
102-4504	Live births, mean age of mother, Canada, provinces and territories

---

### **Selected surveys from Statistics Canada**

---

3601	Estimates of Total Population, Canada, Provinces and Territories
3602	Population Projections for Canada, the Provinces and Territories
3604	Estimates of Population by Age and Sex for Canada, Provinces and Territories
3605	Estimates of Population by Marital Status, Age and Sex for Canada, Provinces and Territories
3606	Estimates of Census Families for Canada, Provinces and Territories
3608	Estimates of Population by Age and Sex for Census Divisions, Census Metropolitan Areas and Economic Regions (Component Method)

---

### **Selected tables of Canadian statistics from Statistics Canada**

---

- *Births and birth rate, by provinces and territories*
- *Deaths and death rate, by provinces and territories*
- *Components of population growth, by province and territory*
- *Marriages by provinces and territories*
- *Daily Article for Population Estimates*
- *Population by year, by province and territory*

- *Population by year, by province and territory*
- *Population by sex and age group*
- *Population by sex and age group, by provinces and territories*
- *Population by marital status and sex*
- *Population by marital status and sex, by province and territory*

# Statistical tables

---

---



**Table 1-1**  
**Quarterly population estimates, national perspective — Population 1**

	Canada	Newfoundland and Labrador	Prince Edward Island	Nova Scotia	New Brunswick	Quebec	Ontario
	number						
<b>2006</b>							
April 1 <sup>st</sup>	32,501,147	512,509	138,307	935,824	750,504	7,636,710	12,630,547
January 1 <sup>st</sup>	32,422,919	514,409	138,157	936,988	751,111	7,623,870	12,599,364
<b>2005</b>							
October 1 <sup>st</sup>	32,378,122	515,591	138,278	938,116	751,726	7,616,645	12,589,823
July 1 <sup>st</sup>	32,270,507	515,961	138,113	937,889	752,006	7,598,146	12,541,410
April 1 <sup>st</sup>	32,173,890	516,374	137,826	937,800	752,345	7,582,541	12,494,228
January 1 <sup>st</sup>	32,107,043	517,339	137,771	938,339	752,266	7,573,726	12,462,445
<b>2004</b>							
October 1 <sup>st</sup>	32,069,999	517,112	137,762	938,821	752,313	7,566,136	12,454,171
July 1 <sup>st</sup>	31,974,363	517,284	137,861	937,509	752,078	7,547,728	12,407,347
April 1 <sup>st</sup>	31,877,982	517,844	137,787	936,879	751,827	7,531,006	12,357,421
January 1 <sup>st</sup>	31,805,716	518,677	137,618	937,196	751,375	7,519,875	12,320,329
<b>2003</b>							
October 1 <sup>st</sup>	31,761,823	518,816	137,519	937,133	751,438	7,512,119	12,305,346
July 1 <sup>st</sup>	31,669,150	518,469	137,300	936,302	751,215	7,493,958	12,259,568
April 1 <sup>st</sup>	31,573,504	518,683	137,136	935,596	751,011	7,478,357	12,208,499
January 1 <sup>st</sup>	31,501,729	519,040	137,087	935,375	750,935	7,467,289	12,169,065
<b>2002</b>							
October 1 <sup>st</sup>	31,468,449	519,386	137,066	935,554	750,972	7,461,563	12,155,145
July 1 <sup>st</sup>	31,372,587	519,449	136,934	934,507	750,327	7,445,745	12,102,045
April 1 <sup>st</sup>	31,265,843	519,790	136,835	933,720	749,618	7,432,197	12,036,968
January 1 <sup>st</sup>	31,182,448	521,229	136,847	933,609	749,286	7,421,309	11,986,887
<b>2001</b>							
October 1 <sup>st</sup>	31,135,823	521,455	136,872	933,245	749,716	7,413,392	11,965,417
July 1 <sup>st</sup>	31,021,251	521,986	136,672	932,389	749,890	7,396,990	11,897,647

See footnotes at the end of the table.

Table 1-1 – continued

## Quarterly population estimates, national perspective — Population 1

	Manitoba	Saskatchewan	Alberta	British Columbia	Yukon Territory	Northwest Territories	Nunavut
	number						
<b>2006</b>							
April 1 <sup>st</sup>	1,179,681	988,980	3,332,225	4,292,166	31,069	42,179	30,446
January 1 <sup>st</sup>	1,178,348	990,930	3,306,359	4,279,462	31,150	42,526	30,245
<b>2005</b>							
October 1 <sup>st</sup>	1,178,109	992,995	3,281,296	4,271,210	31,235	42,965	30,133
July 1 <sup>st</sup>	1,177,556	994,126	3,256,816	4,254,522	30,988	42,982	29,992
April 1 <sup>st</sup>	1,176,402	994,551	3,239,739	4,238,359	30,881	43,042	29,802
January 1 <sup>st</sup>	1,174,959	994,687	3,226,301	4,225,623	30,862	43,015	29,710
<b>2004</b>							
October 1 <sup>st</sup>	1,173,358	995,351	3,215,869	4,215,695	30,791	42,973	29,647
July 1 <sup>st</sup>	1,170,229	994,300	3,204,780	4,201,867	30,856	42,851	29,673
April 1 <sup>st</sup>	1,167,505	994,342	3,192,421	4,187,938	30,861	42,758	29,393
January 1 <sup>st</sup>	1,165,161	994,167	3,180,787	4,177,626	30,837	42,741	29,327
<b>2003</b>							
October 1 <sup>st</sup>	1,163,207	994,359	3,171,735	4,167,719	30,788	42,451	29,193
July 1 <sup>st</sup>	1,161,626	994,519	3,159,620	4,154,591	30,577	42,240	29,165
April 1 <sup>st</sup>	1,159,212	994,555	3,147,233	4,141,710	30,456	41,987	29,069
January 1 <sup>st</sup>	1,157,962	994,789	3,136,984	4,132,142	30,337	41,797	28,927
<b>2002</b>							
October 1 <sup>st</sup>	1,157,089	995,311	3,128,945	4,126,608	30,267	41,676	28,867
July 1 <sup>st</sup>	1,155,584	995,886	3,116,332	4,115,413	30,137	41,489	28,739
April 1 <sup>st</sup>	1,153,533	996,916	3,100,798	4,105,904	30,092	41,239	28,233
January 1 <sup>st</sup>	1,152,079	998,219	3,087,024	4,096,473	30,155	41,107	28,224
<b>2001</b>							
October 1 <sup>st</sup>	1,151,644	998,926	3,075,186	4,090,659	30,032	41,144	28,135
July 1 <sup>st</sup>	1,151,285	1,000,134	3,056,739	4,078,447	30,129	40,822	28,121

1. Population estimates are final postcensal from July 1, 2001 to July 1, 2002, updated postcensal from October 1, 2002 to April 1, 2005 and preliminary postcensal from July 1, 2005.

**Table 1-2**  
**Quarterly population estimates, national perspective — Quarterly variation <sup>1</sup>**

	Canada	Newfoundland and Labrador	Prince Edward Island	Nova Scotia	New Brunswick	Quebec	Ontario
	variation in %						
<b>2006</b>							
January - March	0.24	-0.37	0.11	-0.12	-0.08	0.17	0.25
<b>2005</b>							
October - December	0.14	-0.23	-0.09	-0.12	-0.08	0.09	0.08
July - September	0.33	-0.07	0.12	0.02	-0.04	0.24	0.39
April - June	0.30	-0.08	0.21	0.01	-0.05	0.21	0.38
January - March	0.21	-0.19	0.04	-0.06	0.01	0.12	0.26
<b>2004</b>							
October - December	0.12	0.04	0.01	-0.05	-0.01	0.10	0.07
July - September	0.30	-0.03	-0.07	0.14	0.03	0.24	0.38
April - June	0.30	-0.11	0.05	0.07	0.03	0.22	0.40
January - March	0.23	-0.16	0.12	-0.03	0.06	0.15	0.30
<b>2003</b>							
October - December	0.14	-0.03	0.07	0.01	-0.01	0.10	0.12
July - September	0.29	0.07	0.16	0.09	0.03	0.24	0.37
April - June	0.30	-0.04	0.12	0.08	0.03	0.21	0.42
January - March	0.23	-0.07	0.04	0.02	0.01	0.15	0.32
<b>2002</b>							
October - December	0.11	-0.07	0.02	-0.02	0.00	0.08	0.11
July - September	0.31	-0.01	0.10	0.11	0.09	0.21	0.44
April - June	0.34	-0.07	0.07	0.08	0.09	0.18	0.54
January - March	0.27	-0.28	-0.01	0.01	0.04	0.15	0.42
<b>2001</b>							
October - December	0.15	-0.04	-0.02	0.04	-0.06	0.11	0.18
July - September	0.37	-0.10	0.15	0.09	-0.02	0.22	0.57

See footnotes at the end of the table.

Table 1-2 – continued

 Quarterly population estimates, national perspective — Quarterly variation <sup>1</sup>

	Manitoba	Saskat- chewan	Alberta	British Columbia	Yukon Territory	Northwest Territories	Nunavut
	variation in %						
<b>2006</b>							
January - March	0.11	-0.20	0.78	0.30	-0.26	-0.82	0.66
<b>2005</b>							
October - December	0.02	-0.21	0.76	0.19	-0.27	-1.02	0.37
July - September	0.05	-0.11	0.75	0.39	0.80	-0.04	0.47
April - June	0.10	-0.04	0.53	0.38	0.35	-0.14	0.64
January - March	0.12	-0.01	0.42	0.30	0.06	0.06	0.31
<b>2004</b>							
October - December	0.14	-0.07	0.32	0.24	0.23	0.10	0.21
July - September	0.27	0.11	0.35	0.33	-0.21	0.28	-0.09
April - June	0.23	0.00	0.39	0.33	-0.02	0.22	0.95
January - March	0.20	0.02	0.37	0.25	0.08	0.04	0.23
<b>2003</b>							
October - December	0.17	-0.02	0.29	0.24	0.16	0.68	0.46
July - September	0.14	-0.02	0.38	0.32	0.69	0.50	0.10
April - June	0.21	0.00	0.39	0.31	0.40	0.60	0.33
January - March	0.11	-0.02	0.33	0.23	0.39	0.45	0.49
<b>2002</b>							
October - December	0.08	-0.05	0.26	0.13	0.23	0.29	0.21
July - September	0.13	-0.06	0.40	0.27	0.43	0.45	0.45
April - June	0.18	-0.10	0.50	0.23	0.15	0.61	1.79
January - March	0.13	-0.13	0.45	0.23	-0.21	0.32	0.03
<b>2001</b>							
October - December	0.04	-0.07	0.38	0.14	0.41	-0.09	0.32
July - September	0.03	-0.12	0.60	0.30	-0.32	0.79	0.05

1. Numbers for total growth are final up to June 2002, updated from July 2002 to March 2005 and preliminary from April 2005.

**Table 1-3**  
**Quarterly population estimates, national perspective — Quarterly population growth <sup>1</sup>**

	Canada	Newfoundland and Labrador	Prince Edward Island	Nova Scotia	New Brunswick	Quebec	Ontario
	number						
<b>2006</b>							
January - March	78,228	-1,900	150	-1,164	-607	12,840	31,183
<b>2005</b>							
October - December	44,797	-1,182	-121	-1,128	-615	7,225	9,541
July - September	107,615	-370	165	227	-280	18,499	48,413
April - June	96,617	-413	287	89	-339	15,605	47,182
January - March	66,847	-965	55	-539	79	8,815	31,783
<b>2004</b>							
October - December	37,044	227	9	-482	-47	7,590	8,274
July - September	95,636	-172	-99	1,312	235	18,408	46,824
April - June	96,381	-560	74	630	251	16,722	49,926
January - March	72,266	-833	169	-317	452	11,131	37,092
<b>2003</b>							
October - December	43,893	-139	99	63	-63	7,756	14,983
July - September	92,673	347	219	831	223	18,161	45,778
April - June	95,646	-214	164	706	204	15,601	51,069
January - March	71,775	-357	49	221	76	11,068	39,434
<b>2002</b>							
October - December	33,280	-346	21	-179	-37	5,726	13,920
July - September	95,862	-63	132	1,047	645	15,818	53,100
April - June	106,744	-341	99	787	709	13,548	65,077
January - March	83,395	-1,439	-12	111	332	10,888	50,081
<b>2001</b>							
October - December	46,625	-226	-25	364	-430	7,917	21,470
July - September	114,572	-531	200	856	-174	16,402	67,770

See footnotes at the end of the table.

Table 1-3 – continued

 Quarterly population estimates, national perspective — Quarterly population growth <sup>1</sup>

	Manitoba	Saskatchewan	Alberta	British Columbia	Yukon Territory	Northwest Territories	Nunavut
	number						
<b>2006</b>							
January - March	1,333	-1,950	25,866	12,704	-81	-347	201
<b>2005</b>							
October - December	239	-2,065	25,063	8,252	-85	-439	112
July - September	553	-1,131	24,480	16,688	247	-17	141
April - June	1,154	-425	17,077	16,163	107	-60	190
January - March	1,443	-136	13,438	12,736	19	27	92
<b>2004</b>							
October - December	1,601	-664	10,432	9,928	71	42	63
July - September	3,129	1,051	11,089	13,828	-65	122	-26
April - June	2,724	-42	12,359	13,929	-5	93	280
January - March	2,344	175	11,634	10,312	24	17	66
<b>2003</b>							
October - December	1,954	-192	9,052	9,907	49	290	134
July - September	1,581	-160	12,115	13,128	211	211	28
April - June	2,414	-36	12,387	12,881	121	253	96
January - March	1,250	-234	10,249	9,568	119	190	142
<b>2002</b>							
October - December	873	-522	8,039	5,534	70	121	60
July - September	1,505	-575	12,613	11,195	130	187	128
April - June	2,051	-1,030	15,534	9,509	45	250	506
January - March	1,454	-1,303	13,774	9,431	-63	132	9
<b>2001</b>							
October - December	435	-707	11,838	5,814	123	-37	89
July - September	359	-1,208	18,447	12,212	-97	322	14

1. Numbers for total growth are final up to June 2002, updated from July 2002 to March 2005 and preliminary from April 2005.

**Table 2-1**  
**Quarterly population estimates, variations and growth, provincial perspective — Canada <sup>1</sup>**

	Population		Quarterly	Quarterly population growth
	number	variation in %	number	number
<b>2006</b>				
April 1 <sup>st</sup>	32,501,147	0.24		78,228
January 1 <sup>st</sup>	32,422,919	0.14		44,797
<b>2005</b>				
October 1 <sup>st</sup>	32,378,122	0.33		107,615
July 1 <sup>st</sup>	32,270,507	0.30		96,617
April 1 <sup>st</sup>	32,173,890	0.21		66,847
January 1 <sup>st</sup>	32,107,043	0.12		37,044
<b>2004</b>				
October 1 <sup>st</sup>	32,069,999	0.30		95,636
July 1 <sup>st</sup>	31,974,363	0.30		96,381
April 1 <sup>st</sup>	31,877,982	0.23		72,266
January 1 <sup>st</sup>	31,805,716	0.14		43,893
<b>2003</b>				
October 1 <sup>st</sup>	31,761,823	0.29		92,673
July 1 <sup>st</sup>	31,669,150	0.30		95,646
April 1 <sup>st</sup>	31,573,504	0.23		71,775
January 1 <sup>st</sup>	31,501,729	0.11		33,280
<b>2002</b>				
October 1 <sup>st</sup>	31,468,449	0.31		95,862
July 1 <sup>st</sup>	31,372,587	0.34		106,744
April 1 <sup>st</sup>	31,265,843	0.27		83,395
January 1 <sup>st</sup>	31,182,448	0.15		46,625
<b>2001</b>				
October 1 <sup>st</sup>	31,135,823	0.37		114,572
July 1 <sup>st</sup>	31,021,251	0.35		108,594

1. Population estimates are final postcensal from July 1, 2001 to July 1, 2002, updated postcensal from October 1, 2002 to April 1, 2005 and preliminary postcensal from July 1, 2005.

**Table 2-2**  
**Quarterly population estimates, variations and growth, provincial perspective — Newfoundland and Labrador <sup>1</sup>**

	Population		Quarterly	Quarterly population growth
	number	variation in %	number	number
<b>2006</b>				
April 1 <sup>st</sup>	512,509	-0.37		-1,900
January 1 <sup>st</sup>	514,409	-0.23		-1,182
<b>2005</b>				
October 1 <sup>st</sup>	515,591	-0.07		-370
July 1 <sup>st</sup>	515,961	-0.08		-413
April 1 <sup>st</sup>	516,374	-0.19		-965
January 1 <sup>st</sup>	517,339	0.04		227
<b>2004</b>				
October 1 <sup>st</sup>	517,112	-0.03		-172
July 1 <sup>st</sup>	517,284	-0.11		-560
April 1 <sup>st</sup>	517,844	-0.16		-833
January 1 <sup>st</sup>	518,677	-0.03		-139
<b>2003</b>				
October 1 <sup>st</sup>	518,816	0.07		347
July 1 <sup>st</sup>	518,469	-0.04		-214
April 1 <sup>st</sup>	518,683	-0.07		-357
January 1 <sup>st</sup>	519,040	-0.07		-346
<b>2002</b>				
October 1 <sup>st</sup>	519,386	-0.01		-63
July 1 <sup>st</sup>	519,449	-0.07		-341
April 1 <sup>st</sup>	519,790	-0.28		-1,439
January 1 <sup>st</sup>	521,229	-0.04		-226
<b>2001</b>				
October 1 <sup>st</sup>	521,455	-0.10		-531
July 1 <sup>st</sup>	521,986	-0.26		-1,335

1. Population estimates are final postcensal from July 1, 2001 to July 1, 2002, updated postcensal from October 1, 2002 to April 1, 2005 and preliminary postcensal from July 1, 2005.



**Table 2-3**  
**Quarterly population estimates, variations and growth, provincial perspective — Prince Edward Island <sup>1</sup>**

	Population		Quarterly	
	number	variation in %	number	Quarterly population growth
<b>2006</b>				
April 1 <sup>st</sup>	138,307	0.11	150	
January 1 <sup>st</sup>	138,157	-0.09	-121	
<b>2005</b>				
October 1 <sup>st</sup>	138,278	0.12	165	
July 1 <sup>st</sup>	138,113	0.21	287	
April 1 <sup>st</sup>	137,826	0.04	55	
January 1 <sup>st</sup>	137,771	0.01	9	
<b>2004</b>				
October 1 <sup>st</sup>	137,762	-0.07	-99	
July 1 <sup>st</sup>	137,861	0.05	74	
April 1 <sup>st</sup>	137,787	0.12	169	
January 1 <sup>st</sup>	137,618	0.07	99	
<b>2003</b>				
October 1 <sup>st</sup>	137,519	0.16	219	
July 1 <sup>st</sup>	137,300	0.12	164	
April 1 <sup>st</sup>	137,136	0.04	49	
January 1 <sup>st</sup>	137,087	0.02	21	
<b>2002</b>				
October 1 <sup>st</sup>	137,066	0.10	132	
July 1 <sup>st</sup>	136,934	0.07	99	
April 1 <sup>st</sup>	136,835	-0.01	-12	
January 1 <sup>st</sup>	136,847	-0.02	-25	
<b>2001</b>				
October 1 <sup>st</sup>	136,872	0.15	200	
July 1 <sup>st</sup>	136,672	0.12	160	

1. Population estimates are final postcensal from July 1, 2001 to July 1, 2002, updated postcensal from October 1, 2002 to April 1, 2005 and preliminary postcensal from July 1, 2005.

**Table 2-4**  
**Quarterly population estimates, variations and growth, provincial perspective — Nova Scotia <sup>1</sup>**

	Population		Quarterly	Quarterly population growth
	number	variation in %		number
<b>2006</b>				
April 1 <sup>st</sup>	935,824	-0.12		-1,164
January 1 <sup>st</sup>	936,988	-0.12		-1,128
<b>2005</b>				
October 1 <sup>st</sup>	938,116	0.02		227
July 1 <sup>st</sup>	937,889	0.01		89
April 1 <sup>st</sup>	937,800	-0.06		-539
January 1 <sup>st</sup>	938,339	-0.05		-482
<b>2004</b>				
October 1 <sup>st</sup>	938,821	0.14		1,312
July 1 <sup>st</sup>	937,509	0.07		630
April 1 <sup>st</sup>	936,879	-0.03		-317
January 1 <sup>st</sup>	937,196	0.01		63
<b>2003</b>				
October 1 <sup>st</sup>	937,133	0.09		831
July 1 <sup>st</sup>	936,302	0.08		706
April 1 <sup>st</sup>	935,596	0.02		221
January 1 <sup>st</sup>	935,375	-0.02		-179
<b>2002</b>				
October 1 <sup>st</sup>	935,554	0.11		1,047
July 1 <sup>st</sup>	934,507	0.08		787
April 1 <sup>st</sup>	933,720	0.01		111
January 1 <sup>st</sup>	933,609	0.04		364
<b>2001</b>				
October 1 <sup>st</sup>	933,245	0.09		856
July 1 <sup>st</sup>	932,389	-0.06		-583

1. Population estimates are final postcensal from July 1, 2001 to July 1, 2002, updated postcensal from October 1, 2002 to April 1, 2005 and preliminary postcensal from July 1, 2005.

**Table 2-5**  
**Quarterly population estimates, variations and growth, provincial perspective — New Brunswick <sup>1</sup>**

	Population		Quarterly	Quarterly population growth
	number	variation in %	number	number
<b>2006</b>				
April 1 <sup>st</sup>	750,504	-0.08		-607
January 1 <sup>st</sup>	751,111	-0.08		-615
<b>2005</b>				
October 1 <sup>st</sup>	751,726	-0.04		-280
July 1 <sup>st</sup>	752,006	-0.05		-339
April 1 <sup>st</sup>	752,345	0.01		79
January 1 <sup>st</sup>	752,266	-0.01		-47
<b>2004</b>				
October 1 <sup>st</sup>	752,313	0.03		235
July 1 <sup>st</sup>	752,078	0.03		251
April 1 <sup>st</sup>	751,827	0.06		452
January 1 <sup>st</sup>	751,375	-0.01		-63
<b>2003</b>				
October 1 <sup>st</sup>	751,438	0.03		223
July 1 <sup>st</sup>	751,215	0.03		204
April 1 <sup>st</sup>	751,011	0.01		76
January 1 <sup>st</sup>	750,935	0.00		-37
<b>2002</b>				
October 1 <sup>st</sup>	750,972	0.09		645
July 1 <sup>st</sup>	750,327	0.09		709
April 1 <sup>st</sup>	749,618	0.04		332
January 1 <sup>st</sup>	749,286	-0.06		-430
<b>2001</b>				
October 1 <sup>st</sup>	749,716	-0.02		-174
July 1 <sup>st</sup>	749,890	0.01		96

1. Population estimates are final postcensal from July 1, 2001 to July 1, 2002, updated postcensal from October 1, 2002 to April 1, 2005 and preliminary postcensal from July 1, 2005.

**Table 2-6**  
**Quarterly population estimates, variations and growth, provincial perspective — Quebec <sup>1</sup>**

	Population		Quarterly	Quarterly population growth
	number	variation in %	number	number
<b>2006</b>				
April 1 <sup>st</sup>	7,636,710	0.17		12,840
January 1 <sup>st</sup>	7,623,870	0.09		7,225
<b>2005</b>				
October 1 <sup>st</sup>	7,616,645	0.24		18,499
July 1 <sup>st</sup>	7,598,146	0.21		15,605
April 1 <sup>st</sup>	7,582,541	0.12		8,815
January 1 <sup>st</sup>	7,573,726	0.10		7,590
<b>2004</b>				
October 1 <sup>st</sup>	7,566,136	0.24		18,408
July 1 <sup>st</sup>	7,547,728	0.22		16,722
April 1 <sup>st</sup>	7,531,006	0.15		11,131
January 1 <sup>st</sup>	7,519,875	0.10		7,756
<b>2003</b>				
October 1 <sup>st</sup>	7,512,119	0.24		18,161
July 1 <sup>st</sup>	7,493,958	0.21		15,601
April 1 <sup>st</sup>	7,478,357	0.15		11,068
January 1 <sup>st</sup>	7,467,289	0.08		5,726
<b>2002</b>				
October 1 <sup>st</sup>	7,461,563	0.21		15,818
July 1 <sup>st</sup>	7,445,745	0.18		13,548
April 1 <sup>st</sup>	7,432,197	0.15		10,888
January 1 <sup>st</sup>	7,421,309	0.11		7,917
<b>2001</b>				
October 1 <sup>st</sup>	7,413,392	0.22		16,402
July 1 <sup>st</sup>	7,396,990	0.18		13,160

1. Population estimates are final postcensal from July 1, 2001 to July 1, 2002, updated postcensal from October 1, 2002 to April 1, 2005 and preliminary postcensal from July 1, 2005.

**Table 2-7**  
**Quarterly population estimates, variations and growth, provincial perspective — Ontario <sup>1</sup>**

	Population		Quarterly	Quarterly population growth
	number	variation in %	number	number
<b>2006</b>				
April 1 <sup>st</sup>	12,630,547	0.25		31,183
January 1 <sup>st</sup>	12,599,364	0.08		9,541
<b>2005</b>				
October 1 <sup>st</sup>	12,589,823	0.39		48,413
July 1 <sup>st</sup>	12,541,410	0.38		47,182
April 1 <sup>st</sup>	12,494,228	0.26		31,783
January 1 <sup>st</sup>	12,462,445	0.07		8,274
<b>2004</b>				
October 1 <sup>st</sup>	12,454,171	0.38		46,824
July 1 <sup>st</sup>	12,407,347	0.40		49,926
April 1 <sup>st</sup>	12,357,421	0.30		37,092
January 1 <sup>st</sup>	12,320,329	0.12		14,983
<b>2003</b>				
October 1 <sup>st</sup>	12,305,346	0.37		45,778
July 1 <sup>st</sup>	12,259,568	0.42		51,069
April 1 <sup>st</sup>	12,208,499	0.32		39,434
January 1 <sup>st</sup>	12,169,065	0.11		13,920
<b>2002</b>				
October 1 <sup>st</sup>	12,155,145	0.44		53,100
July 1 <sup>st</sup>	12,102,045	0.54		65,077
April 1 <sup>st</sup>	12,036,968	0.42		50,081
January 1 <sup>st</sup>	11,986,887	0.18		21,470
<b>2001</b>				
October 1 <sup>st</sup>	11,965,417	0.57		67,770
July 1 <sup>st</sup>	11,897,647	0.59		69,310

1. Population estimates are final postcensal from July 1, 2001 to July 1, 2002, updated postcensal from October 1, 2002 to April 1, 2005 and preliminary postcensal from July 1, 2005.

**Table 2-8**  
**Quarterly population estimates, variations and growth, provincial perspective — Manitoba <sup>1</sup>**

	Population		Quarterly	Quarterly population growth
	number	variation in %	number	number
<b>2006</b>				
April 1 <sup>st</sup>	1,179,681	0.11		1,333
January 1 <sup>st</sup>	1,178,348	0.02		239
<b>2005</b>				
October 1 <sup>st</sup>	1,178,109	0.05		553
July 1 <sup>st</sup>	1,177,556	0.10		1,154
April 1 <sup>st</sup>	1,176,402	0.12		1,443
January 1 <sup>st</sup>	1,174,959	0.14		1,601
<b>2004</b>				
October 1 <sup>st</sup>	1,173,358	0.27		3,129
July 1 <sup>st</sup>	1,170,229	0.23		2,724
April 1 <sup>st</sup>	1,167,505	0.20		2,344
January 1 <sup>st</sup>	1,165,161	0.17		1,954
<b>2003</b>				
October 1 <sup>st</sup>	1,163,207	0.14		1,581
July 1 <sup>st</sup>	1,161,626	0.21		2,414
April 1 <sup>st</sup>	1,159,212	0.11		1,250
January 1 <sup>st</sup>	1,157,962	0.08		873
<b>2002</b>				
October 1 <sup>st</sup>	1,157,089	0.13		1,505
July 1 <sup>st</sup>	1,155,584	0.18		2,051
April 1 <sup>st</sup>	1,153,533	0.13		1,454
January 1 <sup>st</sup>	1,152,079	0.04		435
<b>2001</b>				
October 1 <sup>st</sup>	1,151,644	0.03		359
July 1 <sup>st</sup>	1,151,285	0.14		1,567

1. Population estimates are final postcensal from July 1, 2001 to July 1, 2002, updated postcensal from October 1, 2002 to April 1, 2005 and preliminary postcensal from July 1, 2005.

**Table 2-9**  
**Quarterly population estimates, variations and growth, provincial perspective — Saskatchewan <sup>1</sup>**

	Population		Quarterly	Quarterly population growth
	number	variation in %	number	number
<b>2006</b>				
April 1 <sup>st</sup>	988,980	-0.20		-1,950
January 1 <sup>st</sup>	990,930	-0.21		-2,065
<b>2005</b>				
October 1 <sup>st</sup>	992,995	-0.11		-1,131
July 1 <sup>st</sup>	994,126	-0.04		-425
April 1 <sup>st</sup>	994,551	-0.01		-136
January 1 <sup>st</sup>	994,687	-0.07		-664
<b>2004</b>				
October 1 <sup>st</sup>	995,351	0.11		1,051
July 1 <sup>st</sup>	994,300	0.00		-42
April 1 <sup>st</sup>	994,342	0.02		175
January 1 <sup>st</sup>	994,167	-0.02		-192
<b>2003</b>				
October 1 <sup>st</sup>	994,359	-0.02		-160
July 1 <sup>st</sup>	994,519	0.00		-36
April 1 <sup>st</sup>	994,555	-0.02		-234
January 1 <sup>st</sup>	994,789	-0.05		-522
<b>2002</b>				
October 1 <sup>st</sup>	995,311	-0.06		-575
July 1 <sup>st</sup>	995,886	-0.10		-1,030
April 1 <sup>st</sup>	996,916	-0.13		-1,303
January 1 <sup>st</sup>	998,219	-0.07		-707
<b>2001</b>				
October 1 <sup>st</sup>	998,926	-0.12		-1,208
July 1 <sup>st</sup>	1,000,134	-0.17		-1,696

1. Population estimates are final postcensal from July 1, 2001 to July 1, 2002, updated postcensal from October 1, 2002 to April 1, 2005 and preliminary postcensal from July 1, 2005.

**Table 2-10**  
**Quarterly population estimates, variations and growth, provincial perspective — Alberta <sup>1</sup>**

	Population		Quarterly	Quarterly population growth
	number	variation in %	number	number
<b>2006</b>				
April 1 <sup>st</sup>	3,332,225	0.78		25,866
January 1 <sup>st</sup>	3,306,359	0.76		25,063
<b>2005</b>				
October 1 <sup>st</sup>	3,281,296	0.75		24,480
July 1 <sup>st</sup>	3,256,816	0.53		17,077
April 1 <sup>st</sup>	3,239,739	0.42		13,438
January 1 <sup>st</sup>	3,226,301	0.32		10,432
<b>2004</b>				
October 1 <sup>st</sup>	3,215,869	0.35		11,089
July 1 <sup>st</sup>	3,204,780	0.39		12,359
April 1 <sup>st</sup>	3,192,421	0.37		11,634
January 1 <sup>st</sup>	3,180,787	0.29		9,052
<b>2003</b>				
October 1 <sup>st</sup>	3,171,735	0.38		12,115
July 1 <sup>st</sup>	3,159,620	0.39		12,387
April 1 <sup>st</sup>	3,147,233	0.33		10,249
January 1 <sup>st</sup>	3,136,984	0.26		8,039
<b>2002</b>				
October 1 <sup>st</sup>	3,128,945	0.40		12,613
July 1 <sup>st</sup>	3,116,332	0.50		15,534
April 1 <sup>st</sup>	3,100,798	0.45		13,774
January 1 <sup>st</sup>	3,087,024	0.38		11,838
<b>2001</b>				
October 1 <sup>st</sup>	3,075,186	0.60		18,447
July 1 <sup>st</sup>	3,056,739	0.50		15,078

1. Population estimates are final postcensal from July 1, 2001 to July 1, 2002, updated postcensal from October 1, 2002 to April 1, 2005 and preliminary postcensal from July 1, 2005.



**Table 2-11**  
**Quarterly population estimates, variations and growth, provincial perspective — British Columbia<sup>1</sup>**

	Population		Quarterly	Quarterly
	number	variation in %	number	population growth
<b>2006</b>				
April 1 <sup>st</sup>	4,292,166	0.30	12,704	
January 1 <sup>st</sup>	4,279,462	0.19	8,252	
<b>2005</b>				
October 1 <sup>st</sup>	4,271,210	0.39	16,688	
July 1 <sup>st</sup>	4,254,522	0.38	16,163	
April 1 <sup>st</sup>	4,238,359	0.30	12,736	
January 1 <sup>st</sup>	4,225,623	0.24	9,928	
<b>2004</b>				
October 1 <sup>st</sup>	4,215,695	0.33	13,828	
July 1 <sup>st</sup>	4,201,867	0.33	13,929	
April 1 <sup>st</sup>	4,187,938	0.25	10,312	
January 1 <sup>st</sup>	4,177,626	0.24	9,907	
<b>2003</b>				
October 1 <sup>st</sup>	4,167,719	0.32	13,128	
July 1 <sup>st</sup>	4,154,591	0.31	12,881	
April 1 <sup>st</sup>	4,141,710	0.23	9,568	
January 1 <sup>st</sup>	4,132,142	0.13	5,534	
<b>2002</b>				
October 1 <sup>st</sup>	4,126,608	0.27	11,195	
July 1 <sup>st</sup>	4,115,413	0.23	9,509	
April 1 <sup>st</sup>	4,105,904	0.23	9,431	
January 1 <sup>st</sup>	4,096,473	0.14	5,814	
<b>2001</b>				
October 1 <sup>st</sup>	4,090,659	0.30	12,212	
July 1 <sup>st</sup>	4,078,447	0.31	12,449	

1. Population estimates are final postcensal from July 1, 2001 to July 1, 2002, updated postcensal from October 1, 2002 to April 1, 2005 and preliminary postcensal from July 1, 2005.

**Table 2-12**  
**Quarterly population estimates, variations and growth, provincial perspective — Yukon Territory <sup>1</sup>**

	Population		Quarterly	
	number	variation in %	number	Quarterly population growth
<b>2006</b>				
April 1 <sup>st</sup>	31,069	-0.26		-81
January 1 <sup>st</sup>	31,150	-0.27		-85
<b>2005</b>				
October 1 <sup>st</sup>	31,235	0.80		247
July 1 <sup>st</sup>	30,988	0.35		107
April 1 <sup>st</sup>	30,881	0.06		19
January 1 <sup>st</sup>	30,862	0.23		71
<b>2004</b>				
October 1 <sup>st</sup>	30,791	-0.21		-65
July 1 <sup>st</sup>	30,856	-0.02		-5
April 1 <sup>st</sup>	30,861	0.08		24
January 1 <sup>st</sup>	30,837	0.16		49
<b>2003</b>				
October 1 <sup>st</sup>	30,788	0.69		211
July 1 <sup>st</sup>	30,577	0.40		121
April 1 <sup>st</sup>	30,456	0.39		119
January 1 <sup>st</sup>	30,337	0.23		70
<b>2002</b>				
October 1 <sup>st</sup>	30,267	0.43		130
July 1 <sup>st</sup>	30,137	0.15		45
April 1 <sup>st</sup>	30,092	-0.21		-63
January 1 <sup>st</sup>	30,155	0.41		123
<b>2001</b>				
October 1 <sup>st</sup>	30,032	-0.32		-97
July 1 <sup>st</sup>	30,129	0.05		15

1. Population estimates are final postcensal from July 1, 2001 to July 1, 2002, updated postcensal from October 1, 2002 to April 1, 2005 and preliminary postcensal from July 1, 2005.

**Table 2-13**  
**Quarterly population estimates, variations and growth, provincial perspective — Northwest Territories <sup>1</sup>**

	Population		Quarterly	Quarterly population growth
	number	variation in %	number	number
<b>2006</b>				
April 1 <sup>st</sup>	42,179	-0.82		-347
January 1 <sup>st</sup>	42,526	-1.02		-439
<b>2005</b>				
October 1 <sup>st</sup>	42,965	-0.04		-17
July 1 <sup>st</sup>	42,982	-0.14		-60
April 1 <sup>st</sup>	43,042	0.06		27
January 1 <sup>st</sup>	43,015	0.10		42
<b>2004</b>				
October 1 <sup>st</sup>	42,973	0.28		122
July 1 <sup>st</sup>	42,851	0.22		93
April 1 <sup>st</sup>	42,758	0.04		17
January 1 <sup>st</sup>	42,741	0.68		290
<b>2003</b>				
October 1 <sup>st</sup>	42,451	0.50		211
July 1 <sup>st</sup>	42,240	0.60		253
April 1 <sup>st</sup>	41,987	0.45		190
January 1 <sup>st</sup>	41,797	0.29		121
<b>2002</b>				
October 1 <sup>st</sup>	41,676	0.45		187
July 1 <sup>st</sup>	41,489	0.61		250
April 1 <sup>st</sup>	41,239	0.32		132
January 1 <sup>st</sup>	41,107	-0.09		-37
<b>2001</b>				
October 1 <sup>st</sup>	41,144	0.79		322
July 1 <sup>st</sup>	40,822	0.45		184

1. Population estimates are final postcensal from July 1, 2001 to July 1, 2002, updated postcensal from October 1, 2002 to April 1, 2005 and preliminary postcensal from July 1, 2005.

**Table 2-14**  
**Quarterly population estimates, variations and growth, provincial perspective — Nunavut<sup>1</sup>**

	Population		Quarterly	Quarterly population growth
	number	variation in %	number	number
<b>2006</b>				
April 1 <sup>st</sup>	30,446	0.66		201
January 1 <sup>st</sup>	30,245	0.37		112
<b>2005</b>				
October 1 <sup>st</sup>	30,133	0.47		141
July 1 <sup>st</sup>	29,992	0.64		190
April 1 <sup>st</sup>	29,802	0.31		92
January 1 <sup>st</sup>	29,710	0.21		63
<b>2004</b>				
October 1 <sup>st</sup>	29,647	-0.09		-26
July 1 <sup>st</sup>	29,673	0.95		280
April 1 <sup>st</sup>	29,393	0.23		66
January 1 <sup>st</sup>	29,327	0.46		134
<b>2003</b>				
October 1 <sup>st</sup>	29,193	0.10		28
July 1 <sup>st</sup>	29,165	0.33		96
April 1 <sup>st</sup>	29,069	0.49		142
January 1 <sup>st</sup>	28,927	0.21		60
<b>2002</b>				
October 1 <sup>st</sup>	28,867	0.45		128
July 1 <sup>st</sup>	28,739	1.79		506
April 1 <sup>st</sup>	28,233	0.03		9
January 1 <sup>st</sup>	28,224	0.32		89
<b>2001</b>				
October 1 <sup>st</sup>	28,135	0.05		14
July 1 <sup>st</sup>	28,121	0.68		189

1. Population estimates are final postcensal from July 1, 2001 to July 1, 2002, updated postcensal from October 1, 2002 to April 1, 2005 and preliminary postcensal from July 1, 2005.

**Table 3-1**  
**Quarterly population estimates and factors of growth, provincial perspective — Canada**

	Population at beginning period	Natural increase	Net interprovincial migration	Net international migration	Total net migration	Total growth
	number					
<b>2006</b>						
April - June	32,501,147	..	..	..	..	..
January - March	32,422,919	20,604	0	57,624	57,624	78,228
<b>2005</b>						
October - December	32,378,122	21,809	0	22,988	22,988	44,797
July - September	32,270,507	35,175	0	72,440	72,440	107,615
April - June	32,173,890	29,363	0	67,254	67,254	96,617
January - March	32,107,043	17,302	0	49,545	49,545	66,847
<b>2004</b>						
October - December	32,069,999	22,205	0	14,839	14,839	37,044
July - September	31,974,363	34,341	0	61,295	61,295	95,636
April - June	31,877,982	28,840	0	67,541	67,541	96,381
January - March	31,805,716	18,441	0	53,825	53,825	72,266
<b>2003</b>						
October - December	31,761,823	22,283	0	21,610	21,610	43,893
July - September	31,669,150	34,877	0	57,796	57,796	92,673
April - June	31,573,504	30,186	0	65,460	65,460	95,646
January - March	31,501,729	20,571	0	51,204	51,204	71,775
<b>2002</b>						
October - December	31,468,449	21,887	0	11,393	11,393	33,280
July - September	31,372,587	33,177	0	62,685	62,685	95,862
April - June	31,265,843	29,589	0	77,155	77,155	106,744
January - March	31,182,448	20,546	0	62,849	62,849	83,395
<b>2001</b>						
October - December	31,135,823	23,562	0	23,063	23,063	46,625
July - September	31,021,251	33,964	0	80,608	80,608	114,572

**Note:** See "Data quality, concepts and methodology — Explanatory notes for the tables" section.

**Table 3-2**  
**Quarterly population estimates and factors of growth, provincial perspective — Newfoundland and Labrador**

	Population at beginning period	Natural increase	Net interprovincial migration	Net international migration	Total net migration	Total growth
	number					
<b>2006</b>						
April - June	512,509	..	..	..	..	..
January - March	514,409	-204	-1,829	133	-1,696	-1,900
<b>2005</b>						
October - December	515,591	24	-1,011	-195	-1,206	-1,182
July - September	515,961	149	-656	137	-519	-370
April - June	516,374	-7	-713	307	-406	-413
January - March	517,339	-115	-1,062	212	-850	-965
<b>2004</b>						
October - December	517,112	15	294	-82	212	227
July - September	517,284	189	-394	33	-361	-172
April - June	517,844	36	-920	324	-596	-560
January - March	518,677	-70	-787	24	-763	-833
<b>2003</b>						
October - December	518,816	51	-252	62	-190	-139
July - September	518,469	229	-68	186	118	347
April - June	518,683	76	-408	118	-290	-214
January - March	519,040	-28	-375	46	-329	-357
<b>2002</b>						
October - December	519,386	38	-309	-75	-384	-346
July - September	519,449	269	-591	259	-332	-63
April - June	519,790	130	-699	228	-471	-341
January - March	521,229	31	-1,588	118	-1,470	-1,439
<b>2001</b>						
October - December	521,455	7	-270	37	-233	-226
July - September	521,986	342	-795	-78	-873	-531

**Note:** See "Data quality, concepts and methodology — Explanatory notes for the tables" section.

**Table 3-3**  
**Quarterly population estimates and factors of growth, provincial perspective — Prince Edward Island**

	Population at beginning period	Natural increase	Net interprovincial migration	Net international migration	Total net migration	Total growth
	number					
<b>2006</b>						
April - June	138,307	..	..	..	..	..
January - March	138,157	-7	75	82	157	150
<b>2005</b>						
October - December	138,278	30	-167	16	-151	-121
July - September	138,113	92	-46	119	73	165
April - June	137,826	75	99	113	212	287
January - March	137,771	-17	14	58	72	55
<b>2004</b>						
October - December	137,762	12	-75	72	-3	9
July - September	137,861	80	-260	81	-179	-99
April - June	137,787	79	-74	69	-5	74
January - March	137,618	-14	91	92	183	169
<b>2003</b>						
October - December	137,519	11	96	-8	88	99
July - September	137,300	80	31	108	139	219
April - June	137,136	80	53	31	84	164
January - March	137,087	-13	44	18	62	49
<b>2002</b>						
October - December	137,066	6	20	-5	15	21
July - September	136,934	55	48	29	77	132
April - June	136,835	47	10	42	52	99
January - March	136,847	-16	-13	17	4	-12
<b>2001</b>						
October - December	136,872	11	-29	-7	-36	-25
July - September	136,672	66	94	40	134	200

**Note:** See "Data quality, concepts and methodology — Explanatory notes for the tables" section.

**Table 3-4**  
**Quarterly population estimates and factors of growth, provincial perspective — Nova Scotia**

	Population at beginning period	Natural increase	Net interprovincial migration	Net international migration	Total net migration	Total growth
	number					
<b>2006</b>						
April - June	935,824	..	..	..	..	..
January - March	936,988	-221	-1,335	392	-943	-1,164
<b>2005</b>						
October - December	938,116	-155	-988	15	-973	-1,128
July - September	937,889	288	-962	901	-61	227
April - June	937,800	6	-127	210	83	89
January - March	938,339	-124	-599	184	-415	-539
<b>2004</b>						
October - December	938,821	-45	-179	-258	-437	-482
July - September	937,509	330	432	550	982	1,312
April - June	936,879	59	-65	636	571	630
January - March	937,196	-75	-619	377	-242	-317
<b>2003</b>						
October - December	937,133	-10	91	-18	73	63
July - September	936,302	383	-179	627	448	831
April - June	935,596	111	117	478	595	706
January - March	935,375	-25	113	133	246	221
<b>2002</b>						
October - December	935,554	35	95	-309	-214	-179
July - September	934,507	421	185	441	626	1,047
April - June	933,720	128	44	615	659	787
January - March	933,609	82	-580	609	29	111
<b>2001</b>						
October - December	933,245	101	31	232	263	364
July - September	932,389	460	-393	789	396	856

**Note:** See "Data quality, concepts and methodology — Explanatory notes for the tables" section.



**Table 3-5**  
**Quarterly population estimates and factors of growth, provincial perspective — New Brunswick**

	Population at beginning period	Natural increase	Net interprovincial migration	Net international migration	Total net migration	Total growth
	number					
<b>2006</b>						
April - June	750,504	..	..	..	..	..
January - March	751,111	-22	-920	335	-585	-607
<b>2005</b>						
October - December	751,726	-11	-719	115	-604	-615
July - September	752,006	293	-1,022	449	-573	-280
April - June	752,345	151	-633	143	-490	-339
January - March	752,266	31	-221	269	48	79
<b>2004</b>						
October - December	752,313	47	-221	127	-94	-47
July - September	752,078	348	-575	462	-113	235
April - June	751,827	201	-58	108	50	251
January - March	751,375	80	176	196	372	452
<b>2003</b>						
October - December	751,438	90	-279	126	-153	-63
July - September	751,215	397	-599	425	-174	223
April - June	751,011	251	-212	165	-47	204
January - March	750,935	130	-187	133	-54	76
<b>2002</b>						
October - December	750,972	92	-167	38	-129	-37
July - September	750,327	459	-277	463	186	645
April - June	749,618	229	377	103	480	709
January - March	749,286	170	-97	259	162	332
<b>2001</b>						
October - December	749,716	54	-478	-6	-484	-430
July - September	749,890	453	-1,020	393	-627	-174

**Note:** See "Data quality, concepts and methodology — Explanatory notes for the tables" section.

**Table 3-6**  
**Quarterly population estimates and factors of growth, provincial perspective — Quebec**

	Population at beginning period	Natural increase	Net interprovincial migration	Net international migration	Total net migration	Total growth
	number					
<b>2006</b>						
April - June	7,636,710	..	..	..	..	..
January - March	7,623,870	5,419	-1,956	9,377	7,421	12,840
<b>2005</b>						
October - December	7,616,645	5,012	-1,641	3,854	2,213	7,225
July - September	7,598,146	7,741	-675	11,433	10,758	18,499
April - June	7,582,541	6,439	-2,100	11,266	9,166	15,605
January - March	7,573,726	1,962	-254	7,107	6,853	8,815
<b>2004</b>						
October - December	7,566,136	4,016	54	3,520	3,574	7,590
July - September	7,547,728	7,457	-32	10,983	10,951	18,408
April - June	7,531,006	5,220	-1,601	13,103	11,502	16,722
January - March	7,519,875	2,020	-291	9,402	9,111	11,131
<b>2003</b>						
October - December	7,512,119	4,021	96	3,639	3,735	7,756
July - September	7,493,958	6,983	974	10,204	11,178	18,161
April - June	7,478,357	5,337	-449	10,713	10,264	15,601
January - March	7,467,289	2,910	-403	8,561	8,158	11,068
<b>2002</b>						
October - December	7,461,563	3,623	-331	2,434	2,103	5,726
July - September	7,445,745	5,590	-646	10,874	10,228	15,818
April - June	7,432,197	5,290	-2,399	10,657	8,258	13,548
January - March	7,421,309	2,439	-852	9,301	8,449	10,888
<b>2001</b>						
October - December	7,413,392	4,042	91	3,784	3,875	7,917
July - September	7,396,990	6,096	-1,190	11,496	10,306	16,402

**Note:** See "Data quality, concepts and methodology — Explanatory notes for the tables" section.

**Table 3-7**  
**Quarterly population estimates and factors of growth, provincial perspective — Ontario**

	Population at beginning period	Natural increase	Net interprovincial migration	Net international migration	Total net migration	Total growth
	number					
<b>2006</b>						
April - June	12,630,547					
January - March	12,599,364	6,991	-5,041	29,233	24,192	31,183
<b>2005</b>						
October - December	12,589,823	8,573	-6,436	7,404	968	9,541
July - September	12,541,410	14,193	-5,890	40,110	34,220	48,413
April - June	12,494,228	11,636	-1,359	36,905	35,546	47,182
January - March	12,462,445	7,565	-1,541	25,759	24,218	31,783
<b>2004</b>						
October - December	12,454,171	9,254	-3,485	2,505	-980	8,274
July - September	12,407,347	14,080	-1,990	34,734	32,744	46,824
April - June	12,357,421	12,197	-674	38,403	37,729	49,926
January - March	12,320,329	8,187	-902	29,807	28,905	37,092
<b>2003</b>						
October - December	12,305,346	9,712	-2,028	7,299	5,271	14,983
July - September	12,259,568	14,654	-3,331	34,455	31,124	45,778
April - June	12,208,499	12,744	149	38,176	38,325	51,069
January - March	12,169,065	8,800	136	30,498	30,634	39,434
<b>2002</b>						
October - December	12,155,145	9,645	127	4,148	4,275	13,920
July - September	12,102,045	14,472	225	38,403	38,628	53,100
April - June	12,036,968	12,833	1,586	50,658	52,244	65,077
January - March	11,986,887	9,342	3,127	37,612	40,739	50,081
<b>2001</b>						
October - December	11,965,417	10,874	-428	11,024	10,596	21,470
July - September	11,897,647	14,905	1,069	51,796	52,865	67,770

**Note:** See "Data quality, concepts and methodology — Explanatory notes for the tables" section.

**Table 3-8**  
**Quarterly population estimates and factors of growth, provincial perspective — Manitoba**

	Population at beginning period	Natural increase	Net interprovincial migration	Net international migration	Total net migration	Total growth
	number					
<b>2006</b>						
April - June	1,179,681	..	..	..	..	..
January - March	1,178,348	807	-1,634	2,160	526	1,333
<b>2005</b>						
October - December	1,178,109	748	-2,007	1,498	-509	239
July - September	1,177,556	1,379	-3,037	2,211	-826	553
April - June	1,176,402	1,039	-2,386	2,501	115	1,154
January - March	1,174,959	713	-788	1,518	730	1,443
<b>2004</b>						
October - December	1,173,358	804	-504	1,301	797	1,601
July - September	1,170,229	1,291	-154	1,992	1,838	3,129
April - June	1,167,505	1,047	-766	2,443	1,677	2,724
January - March	1,165,161	722	4	1,618	1,622	2,344
<b>2003</b>						
October - December	1,163,207	794	-363	1,523	1,160	1,954
July - September	1,161,626	1,295	-1,440	1,726	286	1,581
April - June	1,159,212	1,056	-731	2,089	1,358	2,414
January - March	1,157,962	739	-628	1,139	511	1,250
<b>2002</b>						
October - December	1,157,089	748	-524	649	125	873
July - September	1,155,584	1,274	-992	1,223	231	1,505
April - June	1,153,533	1,087	-667	1,631	964	2,051
January - March	1,152,079	930	-550	1,074	524	1,454
<b>2001</b>						
October - December	1,151,644	743	-1,072	764	-308	435
July - September	1,151,285	1,266	-2,055	1,148	-907	359

**Note:** See "Data quality, concepts and methodology — Explanatory notes for the tables" section.

**Table 3-9**  
**Quarterly population estimates and factors of growth, provincial perspective — Saskatchewan**

	Population at beginning period	Natural increase	Net interprovincial migration	Net international migration	Total net migration	Total growth
	number					
<b>2006</b>						
April - June	988,980	..	..	..	..	..
January - March	990,930	610	-2,941	381	-2,560	-1,950
<b>2005</b>						
October - December	992,995	378	-2,533	90	-2,443	-2,065
July - September	994,126	962	-2,499	406	-2,093	-1,131
April - June	994,551	895	-1,885	565	-1,320	-425
January - March	994,687	600	-1,301	565	-736	-136
<b>2004</b>						
October - December	995,351	484	-1,154	6	-1,148	-664
July - September	994,300	970	-243	324	81	1,051
April - June	994,342	902	-1,498	554	-944	-42
January - March	994,167	609	-828	394	-434	175
<b>2003</b>						
October - December	994,359	477	-846	177	-669	-192
July - September	994,519	973	-1,349	216	-1,133	-160
April - June	994,555	909	-1,280	335	-945	-36
January - March	994,789	624	-1,115	257	-858	-234
<b>2002</b>						
October - December	995,311	389	-966	55	-911	-522
July - September	995,886	896	-1,780	309	-1,471	-575
April - June	996,916	822	-2,208	356	-1,852	-1,030
January - March	998,219	748	-2,477	426	-2,051	-1,303
<b>2001</b>						
October - December	998,926	747	-1,568	114	-1,454	-707
July - September	1,000,134	1,029	-2,567	330	-2,237	-1,208

**Note:** See "Data quality, concepts and methodology — Explanatory notes for the tables" section.

**Table 3-10**  
**Quarterly population estimates and factors of growth, provincial perspective — Alberta**

	Population at beginning period	Natural increase	Net interprovincial migration	Net international migration	Total net migration	Total growth
	number					
<b>2006</b>						
April - June	3,332,225					
January - March	3,306,359	5,021	15,573	5,272	20,845	25,866
<b>2005</b>						
October - December	3,281,296	4,711	17,059	3,293	20,352	25,063
July - September	3,256,816	6,074	13,110	5,296	18,406	24,480
April - June	3,239,739	5,546	6,595	4,936	11,531	17,077
January - March	3,226,301	4,684	4,943	3,811	8,754	13,438
<b>2004</b>						
October - December	3,215,869	4,909	3,449	2,074	5,523	10,432
July - September	3,204,780	6,059	1,628	3,402	5,030	11,089
April - June	3,192,421	5,574	2,718	4,067	6,785	12,359
January - March	3,180,787	4,726	3,198	3,710	6,908	11,634
<b>2003</b>						
October - December	3,171,735	4,924	1,685	2,443	4,128	9,052
July - September	3,159,620	6,086	3,005	3,024	6,029	12,115
April - June	3,147,233	5,600	2,981	3,806	6,787	12,387
January - March	3,136,984	4,768	2,583	2,898	5,481	10,249
<b>2002</b>						
October - December	3,128,945	4,697	2,234	1,108	3,342	8,039
July - September	3,116,332	5,813	4,105	2,695	6,800	12,613
April - June	3,100,798	5,382	5,752	4,400	10,152	15,534
January - March	3,087,024	4,565	5,792	3,417	9,209	13,774
<b>2001</b>						
October - December	3,075,186	4,331	5,759	1,748	7,507	11,838
July - September	3,056,739	5,387	8,932	4,128	13,060	18,447

**Note:** See "Data quality, concepts and methodology — Explanatory notes for the tables" section.

**Table 3-11**  
**Quarterly population estimates and factors of growth, provincial perspective — British Columbia**

	Population at beginning period	Natural increase	Net interprovincial migration	Net international migration	Total net migration	Total growth
	number					
<b>2006</b>						
April - June	4,292,166	..	..	..	..	..
January - March	4,279,462	1,851	654	10,199	10,853	12,704
<b>2005</b>						
October - December	4,271,210	2,219	-869	6,902	6,033	8,252
July - September	4,254,522	3,646	1,674	11,368	13,042	16,688
April - June	4,238,359	3,221	2,665	10,277	12,942	16,163
January - March	4,225,623	1,647	1,057	10,032	11,089	12,736
<b>2004</b>						
October - December	4,215,695	2,393	1,904	5,631	7,535	9,928
July - September	4,201,867	3,203	1,830	8,795	10,625	13,828
April - June	4,187,938	3,167	3,049	7,713	10,762	13,929
January - March	4,177,626	1,903	294	8,115	8,409	10,312
<b>2003</b>						
October - December	4,167,719	1,904	1,683	6,320	8,003	9,907
July - September	4,154,591	3,468	2,839	6,821	9,660	13,128
April - June	4,141,710	3,672	-255	9,464	9,209	12,881
January - March	4,132,142	2,320	-212	7,460	7,248	9,568
<b>2002</b>						
October - December	4,126,608	2,330	-180	3,384	3,204	5,534
July - September	4,115,413	3,616	-390	7,969	7,579	11,195
April - June	4,105,904	3,302	-2,182	8,389	6,207	9,509
January - March	4,096,473	1,933	-2,464	9,962	7,498	9,431
<b>2001</b>						
October - December	4,090,659	2,349	-1,960	5,425	3,465	5,814
July - September	4,078,447	3,651	-1,950	10,511	8,561	12,212

**Note:** See "Data quality, concepts and methodology — Explanatory notes for the tables" section.

**Table 3-12**  
**Quarterly population estimates and factors of growth, provincial perspective — Yukon Territory**

	Population at beginning period	Natural increase	Net interprovincial migration	Net international migration	Total net migration	Total growth
	number					
<b>2006</b>						
April - June	31,069	..	..	..	..	..
January - March	31,150	34	-154	39	-115	-81
<b>2005</b>						
October - December	31,235	46	-127	-4	-131	-85
July - September	30,988	68	186	-7	179	247
April - June	30,881	45	23	39	62	107
January - March	30,862	32	-9	-4	-13	19
<b>2004</b>						
October - December	30,791	50	57	-36	21	71
July - September	30,856	54	-77	-42	-119	-65
April - June	30,861	45	-124	74	-50	-5
January - March	30,837	33	-51	42	-9	24
<b>2003</b>						
October - December	30,788	50	18	-19	-1	49
July - September	30,577	53	184	-26	158	211
April - June	30,456	44	30	47	77	121
January - March	30,337	32	41	46	87	119
<b>2002</b>						
October - December	30,267	49	39	-18	21	70
July - September	30,137	46	39	45	84	130
April - June	30,092	41	-68	72	4	45
January - March	30,155	56	-125	6	-119	-63
<b>2001</b>						
October - December	30,032	45	117	-39	78	123
July - September	30,129	52	-145	-4	-149	-97

**Note:** See "Data quality, concepts and methodology — Explanatory notes for the tables" section.



**Table 3-13**  
**Quarterly population estimates and factors of growth, provincial perspective — Northwest Territories**

	Population at beginning period	Natural increase	Net interprovincial migration	Net international migration	Total net migration	Total growth
	number					
<b>2006</b>						
April - June	42,179	..	..	..	..	..
January - March	42,526	136	-503	20	-483	-347
<b>2005</b>						
October - December	42,965	95	-528	-6	-534	-439
July - September	42,982	130	-171	24	-147	-17
April - June	43,042	144	-203	-1	-204	-60
January - March	43,015	145	-148	30	-118	27
<b>2004</b>						
October - December	42,973	122	-64	-16	-80	42
July - September	42,851	129	-12	5	-7	122
April - June	42,758	143	-84	34	-50	93
January - March	42,741	145	-169	41	-128	17
<b>2003</b>						
October - December	42,451	120	94	76	170	290
July - September	42,240	128	54	29	83	211
April - June	41,987	139	73	41	114	253
January - March	41,797	142	37	11	48	190
<b>2002</b>						
October - December	41,676	103	26	-8	18	121
July - September	41,489	104	106	-23	83	187
April - June	41,239	135	107	8	115	250
January - March	41,107	124	-26	34	8	132
<b>2001</b>						
October - December	41,144	110	-136	-11	-147	-37
July - September	40,822	118	139	65	204	322

**Note:** See "Data quality, concepts and methodology — Explanatory notes for the tables" section.

**Table 3-14**  
**Quarterly population estimates and factors of growth, provincial perspective — Nunavut**

	Population at beginning period	Natural increase	Net interprovincial migration	Net international migration	Total net migration	Total growth
	number					
<b>2006</b>						
April - June	30,446	..	..	..	..	..
January - March	30,245	189	11	1	12	201
<b>2005</b>						
October - December	30,133	139	-33	6	-27	112
July - September	29,992	160	-12	-7	-19	141
April - June	29,802	173	24	-7	17	190
January - March	29,710	179	-91	4	-87	92
<b>2004</b>						
October - December	29,647	144	-76	-5	-81	63
July - September	29,673	151	-153	-24	-177	-26
April - June	29,393	170	97	13	110	280
January - March	29,327	175	-116	7	-109	66
<b>2003</b>						
October - December	29,193	139	5	-10	-5	134
July - September	29,165	148	-121	1	-120	28
April - June	29,069	167	-68	-3	-71	96
January - March	28,927	172	-34	4	-30	142
<b>2002</b>						
October - December	28,867	132	-64	-8	-72	60
July - September	28,739	162	-32	-2	-34	128
April - June	28,233	163	347	-4	343	506
January - March	28,224	142	-147	14	-133	9
<b>2001</b>						
October - December	28,135	148	-57	-2	-59	89
July - September	28,121	139	-119	-6	-125	14

**Note:** See "Data quality, concepts and methodology — Explanatory notes for the tables" section.

**Table 4-1**  
**Quarterly estimates of demographic components, provincial perspective — Canada**

	Natural increase		Interprovincial migration		International migration				
	Births	Deaths	In-migrants	Out-migrants	Immigrants	Emigrants	Returning emigrants	Net temporary emigrants	Net non-permanent residents
	number								
<b>2006</b>									
January - March	82,154	61,550	77,569	77,569	55,132	5,692	2,977	5,218	10,425
<b>2005</b>									
October - December	82,550	60,741	61,904	61,904	55,354	7,615	2,357	5,898	-21,210
July - September	90,070	54,895	102,936	102,936	75,975	15,756	6,284	8,761	14,698
April - June	86,763	57,400	90,625	90,625	74,471	6,989	4,168	5,686	1,290
January - March	80,374	63,072	61,380	61,380	56,439	5,680	2,977	5,218	1,027
<b>2004</b>									
October - December	81,861	59,656	53,632	53,632	48,091	7,576	2,357	5,898	-22,135
July - September	88,858	54,517	83,031	83,031	65,578	15,621	6,284	8,761	13,815
April - June	85,330	56,490	78,127	78,127	67,242	6,953	4,168	5,696	8,780
January - March	79,954	61,513	56,247	56,247	54,915	5,650	2,976	5,225	6,809
<b>2003</b>									
October - December	81,561	59,278	44,713	44,713	53,610	7,509	2,357	5,899	-20,949
July - September	88,856	53,979	82,293	82,293	63,349	15,423	6,284	8,744	12,330
April - June	85,486	55,300	68,827	68,827	58,876	6,914	4,168	5,731	15,061
January - March	79,299	58,728	59,732	59,732	45,567	5,622	2,976	5,258	13,541
<b>2002</b>									
October - December	79,120	57,233	51,553	51,553	41,843	7,440	2,357	5,926	-19,441
July - September	86,618	53,441	94,787	94,787	52,926	14,849	6,284	8,643	26,967
April - June	83,719	54,130	72,566	72,566	72,719	7,857	5,382	5,774	12,685
January - March	79,345	58,799	62,967	62,967	61,583	5,959	2,627	5,148	9,746
<b>2001</b>									
October - December	78,968	55,406	54,510	54,510	52,132	7,525	3,285	5,670	-19,159
July - September	86,123	52,159	100,447	100,447	69,900	17,587	6,785	8,968	30,478

**Note:** See "Data quality, concepts and methodology — Explanatory notes for the tables" section.

**Table 4-2**  
**Quarterly estimates of demographic components, provincial perspective — Newfoundland and Labrador**

	Natural increase		Interprovincial migration		International migration				
	Births	Deaths	In-migrants	Out-migrants	Immigrants	Emigrants	Returning emigrants	Net temporary emigrants	Net non-permanent residents
	number								
<b>2006</b>									
January - March	1,010	1,214	2,503	4,332	118	13	13	21	36
<b>2005</b>									
October - December	1,137	1,113	1,919	2,930	109	16	10	24	-274
July - September	1,196	1,047	3,183	3,839	107	34	30	36	70
April - June	1,114	1,121	2,985	3,698	131	15	19	24	196
January - March	1,028	1,143	2,234	3,296	147	13	13	21	86
<b>2004</b>									
October - December	1,155	1,140	2,113	1,819	93	16	10	24	-145
July - September	1,214	1,025	2,675	3,069	176	34	30	36	-103
April - June	1,135	1,099	2,365	3,285	159	15	19	24	185
January - March	1,049	1,119	1,908	2,695	151	13	13	21	-106
<b>2003</b>									
October - December	1,177	1,126	1,574	1,826	79	16	10	24	13
July - September	1,234	1,005	2,550	2,618	148	33	29	36	78
April - June	1,153	1,077	2,310	2,718	64	15	18	24	75
January - March	1,065	1,093	1,995	2,370	68	12	13	21	-2
<b>2002</b>									
October - December	1,127	1,089	1,726	2,035	115	15	10	24	-161
July - September	1,251	982	3,167	3,758	66	31	28	36	232
April - June	1,178	1,048	2,357	3,056	117	35	26	24	144
January - March	1,095	1,064	2,056	3,644	109	26	13	22	44
<b>2001</b>									
October - December	1,076	1,069	1,619	1,889	104	33	16	24	-26
July - September	1,287	945	2,752	3,547	92	78	33	37	-88

**Note:** See "Data quality, concepts and methodology — Explanatory notes for the tables" section.

**Table 4-3**  
**Quarterly estimates of demographic components, provincial perspective — Prince Edward Island**

	Natural increase		Interprovincial migration		International migration				
	Births	Deaths	In-migrants	Out-migrants	Immigrants	Emigrants	Returning emigrants	Net temporary emigrants	Net non-permanent residents
	number								
<b>2006</b>									
January - March	327	334	974	899	60	4	4	7	29
<b>2005</b>									
October - December	328	298	387	554	44	7	3	8	-16
July - September	382	290	979	1,025	113	13	10	12	21
April - June	383	308	1,228	1,129	101	6	6	7	19
January - March	321	338	662	648	72	4	4	7	-7
<b>2004</b>									
October - December	326	314	382	457	86	7	3	8	-2
July - September	379	299	703	963	53	13	10	12	43
April - June	386	307	771	845	89	5	6	7	-14
January - March	323	337	543	452	82	4	3	7	18
<b>2003</b>									
October - December	328	317	505	409	50	6	3	8	-47
July - September	379	299	751	720	46	13	10	12	77
April - June	386	306	683	630	34	5	5	7	4
January - March	324	337	587	543	23	4	3	7	3
<b>2002</b>									
October - December	315	309	498	478	25	6	3	8	-19
July - September	349	294	918	870	7	12	10	11	35
April - June	348	301	705	695	44	13	18	7	0
January - March	316	332	602	615	31	10	7	7	-4
<b>2001</b>									
October - December	291	280	441	470	41	13	10	7	-38
July - September	358	292	891	797	29	30	23	12	30

**Note:** See "Data quality, concepts and methodology — Explanatory notes for the tables" section.

**Table 4-4**  
**Quarterly estimates of demographic components, provincial perspective — Nova Scotia**

	Natural increase		Interprovincial migration		International migration				
	Births	Deaths	In-migrants	Out-migrants	Immigrants	Emigrants	Returning emigrants	Net temporary emigrants	Net non-permanent residents
	number								
<b>2006</b>									
January - March	2,001	2,222	3,425	4,760	496	126	64	77	35
<b>2005</b>									
October - December	2,012	2,167	2,793	3,781	465	167	50	86	-247
July - September	2,297	2,009	5,651	6,613	677	349	135	128	566
April - June	2,202	2,196	4,446	4,573	459	154	90	83	-102
January - March	2,026	2,150	3,354	3,953	328	126	64	77	-5
<b>2004</b>									
October - December	2,033	2,078	2,669	2,848	372	167	50	86	-427
July - September	2,319	1,989	5,782	5,350	546	346	135	128	343
April - June	2,215	2,156	4,573	4,638	459	154	90	83	324
January - March	2,038	2,113	2,839	3,458	393	126	64	77	123
<b>2003</b>									
October - December	2,043	2,053	2,532	2,441	390	166	50	86	-206
July - September	2,332	1,949	5,143	5,322	465	341	135	128	496
April - June	2,226	2,115	4,172	4,055	309	153	90	84	316
January - March	2,049	2,074	3,627	3,514	312	124	64	78	-41
<b>2002</b>									
October - December	2,032	1,997	3,127	3,032	322	165	50	87	-429
July - September	2,328	1,907	5,760	5,575	314	329	135	127	448
April - June	2,194	2,066	4,118	4,074	421	160	81	85	358
January - March	2,109	2,027	3,553	4,133	365	121	40	75	400
<b>2001</b>									
October - December	2,084	1,983	3,093	3,062	331	154	49	83	89
July - September	2,306	1,846	5,567	5,960	498	358	102	131	678

**Note:** See "Data quality, concepts and methodology — Explanatory notes for the tables" section.

**Table 4-5**  
**Quarterly estimates of demographic components, provincial perspective — New Brunswick**

	Natural increase		Interprovincial migration		International migration				
	Births	Deaths	In-migrants	Out-migrants	Immigrants	Emigrants	Returning emigrants	Net temporary emigrants	Net non-permanent residents
	number								
<b>2006</b>									
January - March	1,684	1,706	2,679	3,599	322	47	52	45	53
<b>2005</b>									
October - December	1,686	1,697	1,892	2,611	247	64	40	52	-56
July - September	1,821	1,528	4,578	5,600	357	130	108	76	190
April - June	1,763	1,612	3,315	3,948	311	59	72	50	-131
January - March	1,708	1,677	2,222	2,443	178	47	52	45	131
<b>2004</b>									
October - December	1,709	1,662	1,995	2,216	182	64	40	52	21
July - September	1,843	1,495	3,415	3,990	199	130	108	76	361
April - June	1,780	1,579	3,148	3,206	232	57	72	50	-89
January - March	1,723	1,643	2,529	2,353	182	47	52	45	54
<b>2003</b>									
October - December	1,724	1,634	1,593	1,872	182	63	40	52	19
July - September	1,859	1,462	3,420	4,019	165	128	108	76	356
April - June	1,796	1,545	2,813	3,025	164	57	72	50	36
January - March	1,738	1,608	2,436	2,623	155	46	52	47	19
<b>2002</b>									
October - December	1,680	1,588	2,105	2,272	161	61	40	52	-50
July - September	1,890	1,431	3,879	4,156	168	123	108	76	386
April - June	1,736	1,507	3,183	2,806	211	109	95	50	-44
January - March	1,740	1,570	2,716	2,813	170	83	46	44	170
<b>2001</b>									
October - December	1,637	1,583	1,955	2,433	169	104	58	50	-79
July - September	1,858	1,405	3,856	4,876	218	245	120	79	379

**Note:** See "Data quality, concepts and methodology — Explanatory notes for the tables" section.

**Table 4-6**  
**Quarterly estimates of demographic components, provincial perspective — Quebec**

	Natural increase		Interprovincial migration		International migration				
	Births	Deaths	In-migrants	Out-migrants	Immigrants	Emigrants	Returning emigrants	Net temporary emigrants	Net non-permanent residents
	number								
<b>2006</b>									
January - March	19,365	13,946	4,916	6,872	9,169	889	525	832	1,404
<b>2005</b>									
October - December	18,413	13,401	4,696	6,337	8,231	1,189	416	939	-2,665
July - September	20,215	12,474	9,267	9,942	13,227	2,462	1,109	1,396	955
April - June	19,922	13,483	8,284	10,384	12,536	1,091	735	906	-8
January - March	17,945	15,983	4,762	5,016	9,344	887	525	832	-1,043
<b>2004</b>									
October - December	17,785	13,769	5,597	5,543	9,158	1,183	416	939	-3,932
July - September	19,651	12,194	7,859	7,891	12,421	2,440	1,109	1,396	1,289
April - June	18,818	13,598	7,070	8,671	12,326	1,086	735	908	2,036
January - March	17,771	15,751	4,488	4,779	10,342	882	525	833	250
<b>2003</b>									
October - December	17,954	13,933	3,874	3,778	10,027	1,173	416	940	-4,691
July - September	19,835	12,852	8,295	7,321	11,866	2,409	1,109	1,393	1,031
April - June	18,923	13,586	6,081	6,530	10,184	1,079	736	913	1,785
January - March	17,193	14,283	5,276	5,679	7,491	878	525	837	2,260
<b>2002</b>									
October - December	17,263	13,640	4,560	4,891	7,846	1,161	416	944	-3,723
July - September	18,894	13,304	8,355	9,001	9,407	2,318	1,109	1,378	4,054
April - June	18,616	13,326	5,717	8,116	10,572	1,264	859	920	1,410
January - March	17,704	15,265	4,563	5,415	9,754	959	420	821	907
<b>2001</b>									
October - December	17,434	13,392	4,827	4,736	8,715	1,211	524	903	-3,341
July - September	18,848	12,752	9,381	10,571	10,038	2,831	1,082	1,429	4,636

**Note:** See "Data quality, concepts and methodology — Explanatory notes for the tables" section.



**Table 4-7**  
**Quarterly estimates of demographic components, provincial perspective — Ontario**

	Natural increase		Interprovincial migration		International migration				
	Births	Deaths	In-migrants	Out-migrants	Immigrants	Emigrants	Returning emigrants	Net temporary emigrants	Net non-permanent residents
	number								
<b>2006</b>									
January - March	31,194	24,203	14,026	19,067	27,412	2,538	1,234	2,170	5,295
<b>2005</b>									
October - December	32,352	23,779	10,439	16,875	30,232	3,395	979	2,450	-17,962
July - September	35,084	20,891	20,924	26,814	40,333	7,026	2,605	3,642	7,840
April - June	33,233	21,597	20,337	21,696	40,694	3,117	1,728	2,363	-37
January - March	31,049	23,484	12,684	14,225	29,269	2,532	1,234	2,170	-42
<b>2004</b>									
October - December	32,226	22,972	10,822	14,307	25,301	3,377	979	2,450	-17,948
July - September	34,946	20,866	18,346	20,336	34,734	6,965	2,605	3,642	8,002
April - June	33,160	20,963	17,504	18,178	36,346	3,101	1,728	2,367	5,797
January - March	30,961	22,774	12,448	13,350	28,723	2,519	1,234	2,173	4,542
<b>2003</b>									
October - December	32,142	22,430	9,246	11,274	28,646	3,348	979	2,450	-16,528
July - September	34,858	20,204	17,988	21,319	34,263	6,877	2,606	3,635	8,098
April - June	33,071	20,327	16,066	15,917	31,876	3,085	1,728	2,382	10,039
January - March	30,858	22,058	13,959	13,823	24,993	2,509	1,234	2,186	8,966
<b>2002</b>									
October - December	31,239	21,594	12,054	11,927	22,532	3,319	979	2,463	-13,581
July - September	34,088	19,616	22,157	21,932	30,437	6,624	2,607	3,593	15,576
April - June	32,517	19,684	17,783	16,197	44,525	3,253	2,352	2,400	9,434
January - March	30,688	21,346	16,018	12,891	36,136	2,466	1,150	2,141	4,933
<b>2001</b>									
October - December	31,468	20,594	12,065	12,493	30,033	3,114	1,437	2,356	-14,976
July - September	34,274	19,369	24,217	23,148	42,142	7,281	2,964	3,728	17,699

**Note:** See "Data quality, concepts and methodology — Explanatory notes for the tables" section.

**Table 4-8**  
**Quarterly estimates of demographic components, provincial perspective — Manitoba**

	Natural increase		Interprovincial migration		International migration				
	Births	Deaths	In-migrants	Out-migrants	Immigrants	Emigrants	Returning emigrants	Net temporary emigrants	Net non-permanent residents
	number								
<b>2006</b>									
January - March	3,349	2,542	3,463	5,097	2,145	211	187	115	154
<b>2005</b>									
October - December	3,481	2,733	2,211	4,218	1,575	282	147	130	188
July - September	3,773	2,394	4,566	7,603	2,509	582	393	192	83
April - June	3,543	2,504	3,717	6,103	2,347	259	260	125	278
January - March	3,342	2,629	3,373	4,161	1,667	211	187	115	-10
<b>2004</b>									
October - December	3,472	2,668	2,814	3,318	1,600	280	147	130	-36
July - September	3,754	2,463	4,975	5,129	2,062	577	393	192	306
April - June	3,514	2,467	3,987	4,753	2,234	257	260	125	331
January - March	3,309	2,587	3,251	3,247	1,530	208	187	115	224
<b>2003</b>									
October - December	3,440	2,646	2,220	2,583	1,733	277	147	130	50
July - September	3,722	2,427	3,843	5,283	1,906	571	393	192	190
April - June	3,489	2,433	3,429	4,160	1,806	257	260	126	406
January - March	3,289	2,550	2,976	3,604	1,047	208	187	115	228
<b>2002</b>									
October - December	3,329	2,581	2,580	3,104	1,004	277	147	130	-95
July - September	3,658	2,384	4,722	5,714	1,052	551	393	189	518
April - June	3,472	2,385	3,312	3,979	1,524	251	254	127	231
January - March	3,429	2,499	3,293	3,843	1,035	190	123	112	218
<b>2001</b>									
October - December	3,243	2,500	2,659	3,731	1,100	240	155	125	-126
July - September	3,602	2,336	4,696	6,751	1,166	560	320	197	419

**Note:** See "Data quality, concepts and methodology — Explanatory notes for the tables" section.

**Table 4-9**  
**Quarterly estimates of demographic components, provincial perspective — Saskatchewan**

	Natural increase		Interprovincial migration		International migration				
	Births	Deaths	In-migrants	Out-migrants	Immigrants	Emigrants	Returning emigrants	Net temporary emigrants	Net non-permanent residents
	number								
<b>2006</b>									
January - March	2,916	2,306	3,498	6,439	461	95	34	105	86
<b>2005</b>									
October - December	2,898	2,520	2,614	5,147	386	127	27	119	-77
July - September	3,172	2,210	5,306	7,805	553	263	72	176	220
April - June	3,148	2,253	4,830	6,715	635	116	48	115	113
January - March	2,927	2,327	3,629	4,930	532	95	34	105	199
<b>2004</b>									
October - December	2,899	2,415	2,917	4,071	450	127	27	119	-225
July - September	3,170	2,200	5,030	5,273	472	261	72	176	217
April - June	3,129	2,227	4,407	5,905	584	116	48	115	153
January - March	2,909	2,300	3,313	4,141	436	94	34	105	123
<b>2003</b>									
October - December	2,877	2,400	2,398	3,244	463	125	27	119	-69
July - September	3,148	2,175	4,433	5,782	413	258	72	176	165
April - June	3,113	2,204	3,804	5,084	414	115	48	115	103
January - March	2,900	2,276	3,294	4,409	378	93	34	105	43
<b>2002</b>									
October - December	2,741	2,352	2,841	3,807	397	124	27	119	-126
July - September	3,040	2,144	5,233	7,013	367	248	72	173	291
April - June	2,991	2,169	3,715	5,923	452	128	74	116	74
January - March	2,989	2,241	3,100	5,577	451	98	36	103	140
<b>2001</b>									
October - December	2,904	2,157	2,876	4,444	361	123	45	114	-55
July - September	3,112	2,083	4,907	7,474	557	287	93	179	146

**Note:** See "Data quality, concepts and methodology — Explanatory notes for the tables" section.

**Table 4-10**  
**Quarterly estimates of demographic components, provincial perspective — Alberta**

	Natural increase		Interprovincial migration		International migration				
	Births	Deaths	In-migrants	Out-migrants	Immigrants	Emigrants	Returning emigrants	Net temporary emigrants	Net non-permanent residents
	number								
<b>2006</b>									
January - March	10,101	5,080	27,963	12,390	4,641	642	374	599	1,498
<b>2005</b>									
October - December	10,029	5,318	24,997	7,938	4,241	859	296	677	292
July - September	10,931	4,857	29,882	16,772	5,594	1,776	788	1,006	1,696
April - June	10,571	5,025	22,711	16,116	5,201	788	523	652	652
January - March	9,850	5,166	16,386	11,443	4,357	640	374	599	319
<b>2004</b>									
October - December	9,830	4,921	13,123	9,674	3,274	854	296	677	35
July - September	10,764	4,705	18,510	16,882	4,521	1,761	788	1,006	860
April - June	10,435	4,861	17,684	14,966	4,606	784	523	654	376
January - March	9,728	5,002	13,869	10,671	4,073	637	374	600	500
<b>2003</b>									
October - December	9,719	4,795	10,715	9,030	3,864	847	296	677	-193
July - September	10,638	4,552	18,554	15,549	4,576	1,738	788	1,004	402
April - June	10,312	4,712	16,180	13,199	4,297	779	524	658	422
January - March	9,618	4,850	14,036	11,453	3,102	634	374	603	659
<b>2002</b>									
October - December	9,305	4,608	12,121	9,887	3,130	838	296	680	-800
July - September	10,215	4,402	22,290	18,185	3,090	1,673	788	992	1,482
April - June	9,927	4,545	18,584	12,832	4,601	943	824	663	581
January - March	9,244	4,679	16,033	10,241	3,931	715	403	592	390
<b>2001</b>									
October - December	8,815	4,484	15,261	9,502	3,548	904	503	650	-749
July - September	9,616	4,229	25,737	16,805	4,578	2,111	1,038	1,030	1,653

**Note:** See "Data quality, concepts and methodology — Explanatory notes for the tables" section.

**Table 4-11**  
**Quarterly estimates of demographic components, provincial perspective — British Columbia**

	Natural increase		Interprovincial migration		International migration				
	Births	Deaths	In-migrants	Out-migrants	Immigrants	Emigrants	Returning emigrants	Net temporary emigrants	Net non-permanent residents
	number								
<b>2006</b>									
January - March	9,741	7,890	12,903	12,249	10,283	1,120	487	1,239	1,788
<b>2005</b>									
October - December	9,787	7,568	9,378	10,247	9,792	1,500	386	1,400	-376
July - September	10,735	7,089	17,275	15,601	12,458	3,104	1,029	2,080	3,065
April - June	10,405	7,184	17,006	14,341	12,018	1,376	683	1,350	302
January - March	9,710	8,063	11,075	10,018	10,504	1,118	487	1,239	1,398
<b>2004</b>									
October - December	9,997	7,604	10,455	8,551	7,542	1,492	386	1,400	595
July - September	10,353	7,150	14,583	12,753	10,359	3,077	1,029	2,080	2,564
April - June	10,286	7,119	15,207	12,158	10,156	1,370	683	1,352	-404
January - March	9,682	7,779	9,982	9,688	8,963	1,113	487	1,241	1,019
<b>2003</b>									
October - December	9,737	7,833	9,307	7,624	8,134	1,479	386	1,400	679
July - September	10,394	6,926	15,910	13,071	9,460	3,038	1,029	2,075	1,445
April - June	10,552	6,880	12,037	12,292	9,694	1,361	683	1,361	1,809
January - March	9,813	7,493	10,461	10,673	7,957	1,107	487	1,249	1,372
<b>2002</b>									
October - December	9,699	7,369	9,011	9,191	6,297	1,465	386	1,406	-428
July - September	10,470	6,854	16,569	16,959	7,989	2,923	1,029	2,051	3,925
April - June	10,291	6,989	11,579	13,761	10,205	1,690	794	1,371	451
January - March	9,605	7,672	9,822	12,286	9,570	1,282	388	1,223	2,509
<b>2001</b>									
October - December	9,592	7,243	8,811	10,771	7,698	1,619	486	1,346	206
July - September	10,444	6,793	16,947	18,897	10,512	3,785	1,002	2,129	4,911

**Note:** See "Data quality, concepts and methodology — Explanatory notes for the tables" section.

**Table 4-12**  
**Quarterly estimates of demographic components, provincial perspective — Yukon Territory**

	Natural increase		Interprovincial migration		International migration				
	Births	Deaths	In-migrants	Out-migrants	Immigrants	Emigrants	Returning emigrants	Net temporary emigrants	Net non-permanent residents
	number								
<b>2006</b>									
January - March	71	37	283	437	14	2	3	4	28
<b>2005</b>									
October - December	85	39	258	385	15	3	3	6	-13
July - September	98	30	577	391	17	5	5	8	-16
April - June	84	39	465	442	18	2	4	5	24
January - March	73	41	213	222	13	2	3	4	-14
<b>2004</b>									
October - December	87	37	233	176	12	3	3	6	-42
July - September	101	47	362	439	15	5	5	8	-49
April - June	83	38	363	487	14	2	4	5	63
January - March	72	39	293	344	21	2	3	4	24
<b>2003</b>									
October - December	85	35	208	190	15	3	3	6	-28
July - September	99	46	495	311	8	5	5	8	-26
April - June	81	37	345	315	11	2	4	5	39
January - March	70	38	308	267	21	2	3	5	29
<b>2002</b>									
October - December	82	33	275	236	9	3	3	6	-21
July - September	89	43	471	432	13	5	5	8	40
April - June	76	35	368	436	22	4	4	5	55
January - March	92	36	361	486	5	3	1	4	7
<b>2001</b>									
October - December	90	45	311	194	12	3	2	5	-45
July - September	86	34	308	453	28	7	5	8	-22

**Note:** See "Data quality, concepts and methodology — Explanatory notes for the tables" section.

**Table 4-13**  
**Quarterly estimates of demographic components, provincial perspective — Northwest Territories**

	Natural increase		Interprovincial migration		International migration				
	Births	Deaths	In-migrants	Out-migrants	Immigrants	Emigrants	Returning emigrants	Net temporary emigrants	Net non-permanent residents
	number								
<b>2006</b>									
January - March	183	47	631	1,134	9	3	0	3	17
<b>2005</b>									
October - December	159	64	225	753	15	3	0	4	-14
July - September	176	46	595	766	28	7	0	6	9
April - June	185	41	804	1,007	20	4	0	4	-13
January - March	187	42	552	700	21	3	0	3	15
<b>2004</b>									
October - December	162	40	422	486	20	3	0	4	-29
July - September	177	48	631	643	19	7	0	6	-1
April - June	184	41	664	748	34	4	0	4	8
January - March	186	41	607	776	16	3	0	3	31
<b>2003</b>									
October - December	160	40	425	331	25	3	0	4	58
July - September	176	48	767	713	30	7	0	6	12
April - June	182	43	678	605	23	4	0	4	26
January - March	183	41	569	532	16	3	0	3	1
<b>2002</b>									
October - December	142	39	491	465	5	3	0	4	-6
July - September	151	47	924	818	15	7	0	6	-25
April - June	177	42	640	533	20	4	1	4	-5
January - March	165	41	669	695	20	3	0	3	20
<b>2001</b>									
October - December	147	37	389	525	18	4	0	4	-21
July - September	162	44	971	832	36	9	3	6	41

**Note:** See "Data quality, concepts and methodology — Explanatory notes for the tables" section.

**Table 4-14**  
**Quarterly estimates of demographic components, provincial perspective — Nunavut**

	Natural increase		Interprovincial migration		International migration				
	Births	Deaths	In-migrants	Out-migrants	Immigrants	Emigrants	Returning emigrants	Net temporary emigrants	Net non-permanent residents
	number								
<b>2006</b>									
January - March	212	23	305	294	2	2	0	1	2
<b>2005</b>									
October - December	183	44	95	128	2	3	0	3	10
July - September	190	30	153	165	2	5	0	3	-1
April - June	210	37	497	473	0	2	0	2	-3
January - March	208	29	234	325	7	2	0	1	0
<b>2004</b>									
October - December	180	36	90	166	1	3	0	3	0
July - September	187	36	160	313	1	5	0	3	-17
April - June	205	35	384	287	3	2	0	2	14
January - March	203	28	177	293	3	2	0	1	7
<b>2003</b>									
October - December	175	36	116	111	2	3	0	3	-6
July - September	182	34	144	265	3	5	0	3	6
April - June	202	35	229	297	0	2	0	2	1
January - March	199	27	208	242	4	2	0	2	4
<b>2002</b>									
October - December	166	34	164	228	0	3	0	3	-2
July - September	195	33	342	374	1	5	0	3	5
April - June	196	33	505	158	5	3	0	2	-4
January - March	169	27	181	328	6	3	0	1	12
<b>2001</b>									
October - December	187	39	203	260	2	3	0	3	2
July - September	170	31	217	336	6	5	0	3	-4

**Note:** See "Data quality, concepts and methodology — Explanatory notes for the tables" section.



**Table 5-1**  
**Quarterly estimates of demographic components, national perspective — Births <sup>1</sup>**

	Canada	Newfoundland and Labrador	Prince Edward Island	Nova Scotia	New Brunswick	Quebec	Ontario
	number						
<b>2006</b>							
January - March	82,154	1,010	327	2,001	1,684	19,365	31,194
<b>2005</b>							
October - December	82,550	1,137	328	2,012	1,686	18,413	32,352
July - September	90,070	1,196	382	2,297	1,821	20,215	35,084
April - June	86,763	1,114	383	2,202	1,763	19,922	33,233
January - March	80,374	1,028	321	2,026	1,708	17,945	31,049
<b>2004</b>							
October - December	81,861	1,155	326	2,033	1,709	17,785	32,226
July - September	88,858	1,214	379	2,319	1,843	19,651	34,946
April - June	85,330	1,135	386	2,215	1,780	18,818	33,160
January - March	79,954	1,049	323	2,038	1,723	17,771	30,961
<b>2003</b>							
October - December	81,561	1,177	328	2,043	1,724	17,954	32,142
July - September	88,856	1,234	379	2,332	1,859	19,835	34,858
April - June	85,486	1,153	386	2,226	1,796	18,923	33,071
January - March	79,299	1,065	324	2,049	1,738	17,193	30,858
<b>2002</b>							
October - December	79,120	1,127	315	2,032	1,680	17,263	31,239
July - September	86,618	1,251	349	2,328	1,890	18,894	34,088
April - June	83,719	1,178	348	2,194	1,736	18,616	32,517
January - March	79,345	1,095	316	2,109	1,740	17,704	30,688
<b>2001</b>							
October - December	78,968	1,076	291	2,084	1,637	17,434	31,468
July - September	86,123	1,287	358	2,306	1,858	18,848	34,274

See footnotes at the end of the table.

Table 5-1 – continued

 Quarterly estimates of demographic components, national perspective — Births <sup>1</sup>

	Manitoba	Saskat- chewan	Alberta	British Columbia	Yukon Territory	Northwest Territories	Nunavut
	number						
<b>2006</b>							
January - March	3,349	2,916	10,101	9,741	71	183	212
<b>2005</b>							
October - December	3,481	2,898	10,029	9,787	85	159	183
July - September	3,773	3,172	10,931	10,735	98	176	190
April - June	3,543	3,148	10,571	10,405	84	185	210
January - March	3,342	2,927	9,850	9,710	73	187	208
<b>2004</b>							
October - December	3,472	2,899	9,830	9,997	87	162	180
July - September	3,754	3,170	10,764	10,353	101	177	187
April - June	3,514	3,129	10,435	10,286	83	184	205
January - March	3,309	2,909	9,728	9,682	72	186	203
<b>2003</b>							
October - December	3,440	2,877	9,719	9,737	85	160	175
July - September	3,722	3,148	10,638	10,394	99	176	182
April - June	3,489	3,113	10,312	10,552	81	182	202
January - March	3,289	2,900	9,618	9,813	70	183	199
<b>2002</b>							
October - December	3,329	2,741	9,305	9,699	82	142	166
July - September	3,658	3,040	10,215	10,470	89	151	195
April - June	3,472	2,991	9,927	10,291	76	177	196
January - March	3,429	2,989	9,244	9,605	92	165	169
<b>2001</b>							
October - December	3,243	2,904	8,815	9,592	90	147	187
July - September	3,602	3,112	9,616	10,444	86	162	170

1. The numbers of births are final up to December 2003, updated from January 2004 to March 2005 and preliminary from April 2005.

**Table 5-2**  
**Quarterly estimates of demographic components, national perspective — Deaths <sup>1</sup>**

	Canada	Newfoundland and Labrador	Prince Edward Island	Nova Scotia	New Brunswick	Quebec	Ontario
	number						
<b>2006</b>							
January - March	61,550	1,214	334	2,222	1,706	13,946	24,203
<b>2005</b>							
October - December	60,741	1,113	298	2,167	1,697	13,401	23,779
July - September	54,895	1,047	290	2,009	1,528	12,474	20,891
April - June	57,400	1,121	308	2,196	1,612	13,483	21,597
January - March	63,072	1,143	338	2,150	1,677	15,983	23,484
<b>2004</b>							
October - December	59,656	1,140	314	2,078	1,662	13,769	22,972
July - September	54,517	1,025	299	1,989	1,495	12,194	20,866
April - June	56,490	1,099	307	2,156	1,579	13,598	20,963
January - March	61,513	1,119	337	2,113	1,643	15,751	22,774
<b>2003</b>							
October - December	59,278	1,126	317	2,053	1,634	13,933	22,430
July - September	53,979	1,005	299	1,949	1,462	12,852	20,204
April - June	55,300	1,077	306	2,115	1,545	13,586	20,327
January - March	58,728	1,093	337	2,074	1,608	14,283	22,058
<b>2002</b>							
October - December	57,233	1,089	309	1,997	1,588	13,640	21,594
July - September	53,441	982	294	1,907	1,431	13,304	19,616
April - June	54,130	1,048	301	2,066	1,507	13,326	19,684
January - March	58,799	1,064	332	2,027	1,570	15,265	21,346
<b>2001</b>							
October - December	55,406	1,069	280	1,983	1,583	13,392	20,594
July - September	52,159	945	292	1,846	1,405	12,752	19,369

See footnotes at the end of the table.

Table 5-2 – continued

 Quarterly estimates of demographic components, national perspective — Deaths <sup>1</sup>

	Manitoba	Saskat- chewan	Alberta	British Columbia	Yukon Territory	Northwest Territories	Nunavut
	number						
<b>2006</b>							
January - March	2,542	2,306	5,080	7,890	37	47	23
<b>2005</b>							
October - December	2,733	2,520	5,318	7,568	39	64	44
July - September	2,394	2,210	4,857	7,089	30	46	30
April - June	2,504	2,253	5,025	7,184	39	41	37
January - March	2,629	2,327	5,166	8,063	41	42	29
<b>2004</b>							
October - December	2,668	2,415	4,921	7,604	37	40	36
July - September	2,463	2,200	4,705	7,150	47	48	36
April - June	2,467	2,227	4,861	7,119	38	41	35
January - March	2,587	2,300	5,002	7,779	39	41	28
<b>2003</b>							
October - December	2,646	2,400	4,795	7,833	35	40	36
July - September	2,427	2,175	4,552	6,926	46	48	34
April - June	2,433	2,204	4,712	6,880	37	43	35
January - March	2,550	2,276	4,850	7,493	38	41	27
<b>2002</b>							
October - December	2,581	2,352	4,608	7,369	33	39	34
July - September	2,384	2,144	4,402	6,854	43	47	33
April - June	2,385	2,169	4,545	6,989	35	42	33
January - March	2,499	2,241	4,679	7,672	36	41	27
<b>2001</b>							
October - December	2,500	2,157	4,484	7,243	45	37	39
July - September	2,336	2,083	4,229	6,793	34	44	31

1. The numbers of deaths are final up to December 2002, updated from January 2003 to March 2005 and preliminary from April 2005.

**Table 5-3**  
**Quarterly estimates of demographic components, national perspective — Immigrants <sup>1</sup>**

	Canada	Newfoundland and Labrador	Prince Edward Island	Nova Scotia	New Brunswick	Quebec	Ontario
	number						
<b>2006</b>							
January - March	55,132	118	60	496	322	9,169	27,412
<b>2005</b>							
October - December	55,354	109	44	465	247	8,231	30,232
July - September	75,975	107	113	677	357	13,227	40,333
April - June	74,471	131	101	459	311	12,536	40,694
January - March	56,439	147	72	328	178	9,344	29,269
<b>2004</b>							
October - December	48,091	93	86	372	182	9,158	25,301
July - September	65,578	176	53	546	199	12,421	34,734
April - June	67,242	159	89	459	232	12,326	36,346
January - March	54,915	151	82	393	182	10,342	28,723
<b>2003</b>							
October - December	53,610	79	50	390	182	10,027	28,646
July - September	63,349	148	46	465	165	11,866	34,263
April - June	58,876	64	34	309	164	10,184	31,876
January - March	45,567	68	23	312	155	7,491	24,993
<b>2002</b>							
October - December	41,843	115	25	322	161	7,846	22,532
July - September	52,926	66	7	314	168	9,407	30,437
April - June	72,719	117	44	421	211	10,572	44,525
January - March	61,583	109	31	365	170	9,754	36,136
<b>2001</b>							
October - December	52,132	104	41	331	169	8,715	30,033
July - September	69,900	92	29	498	218	10,038	42,142

See footnotes at the end of the table.

Table 5-3 – continued

 Quarterly estimates of demographic components, national perspective — Immigrants <sup>1</sup>

	Manitoba	Saskat- chewan	Alberta	British Columbia	Yukon Territory	Northwest Territories	Nunavut
	number						
<b>2006</b>							
January - March	2,145	461	4,641	10,283	14	9	2
<b>2005</b>							
October - December	1,575	386	4,241	9,792	15	15	2
July - September	2,509	553	5,594	12,458	17	28	2
April - June	2,347	635	5,201	12,018	18	20	0
January - March	1,667	532	4,357	10,504	13	21	7
<b>2004</b>							
October - December	1,600	450	3,274	7,542	12	20	1
July - September	2,062	472	4,521	10,359	15	19	1
April - June	2,234	584	4,606	10,156	14	34	3
January - March	1,530	436	4,073	8,963	21	16	3
<b>2003</b>							
October - December	1,733	463	3,864	8,134	15	25	2
July - September	1,906	413	4,576	9,460	8	30	3
April - June	1,806	414	4,297	9,694	11	23	0
January - March	1,047	378	3,102	7,957	21	16	4
<b>2002</b>							
October - December	1,004	397	3,130	6,297	9	5	0
July - September	1,052	367	3,090	7,989	13	15	1
April - June	1,524	452	4,601	10,205	22	20	5
January - March	1,035	451	3,931	9,570	5	20	6
<b>2001</b>							
October - December	1,100	361	3,548	7,698	12	18	2
July - September	1,166	557	4,578	10,512	28	36	6

1. The numbers of immigrants are final up to December 2002, updated from January 2003 to March 2005 and preliminary from April 2005.

**Table 5-4**  
**Quarterly estimates of demographic components, national perspective — Emigrants <sup>1</sup>**

	Canada	Newfoundland and Labrador	Prince Edward Island	Nova Scotia	New Brunswick	Quebec	Ontario
	number						
<b>2006</b>							
January - March	5,692	13	4	126	47	889	2,538
<b>2005</b>							
October - December	7,615	16	7	167	64	1,189	3,395
July - September	15,756	34	13	349	130	2,462	7,026
April - June	6,989	15	6	154	59	1,091	3,117
January - March	5,680	13	4	126	47	887	2,532
<b>2004</b>							
October - December	7,576	16	7	167	64	1,183	3,377
July - September	15,621	34	13	346	130	2,440	6,965
April - June	6,953	15	5	154	57	1,086	3,101
January - March	5,650	13	4	126	47	882	2,519
<b>2003</b>							
October - December	7,509	16	6	166	63	1,173	3,348
July - September	15,423	33	13	341	128	2,409	6,877
April - June	6,914	15	5	153	57	1,079	3,085
January - March	5,622	12	4	124	46	878	2,509
<b>2002</b>							
October - December	7,440	15	6	165	61	1,161	3,319
July - September	14,849	31	12	329	123	2,318	6,624
April - June	7,857	35	13	160	109	1,264	3,253
January - March	5,959	26	10	121	83	959	2,466
<b>2001</b>							
October - December	7,525	33	13	154	104	1,211	3,114
July - September	17,587	78	30	358	245	2,831	7,281

See footnotes at the end of the table.

Table 5-4 – continued

 Quarterly estimates of demographic components, national perspective — Emigrants <sup>1</sup>

	Manitoba	Saskat- chewan	Alberta	British Columbia	Yukon Territory	Northwest Territories	Nunavut
	number						
<b>2006</b>							
January - March	211	95	642	1,120	2	3	2
<b>2005</b>							
October - December	282	127	859	1,500	3	3	3
July - September	582	263	1,776	3,104	5	7	5
April - June	259	116	788	1,376	2	4	2
January - March	211	95	640	1,118	2	3	2
<b>2004</b>							
October - December	280	127	854	1,492	3	3	3
July - September	577	261	1,761	3,077	5	7	5
April - June	257	116	784	1,370	2	4	2
January - March	208	94	637	1,113	2	3	2
<b>2003</b>							
October - December	277	125	847	1,479	3	3	3
July - September	571	258	1,738	3,038	5	7	5
April - June	257	115	779	1,361	2	4	2
January - March	208	93	634	1,107	2	3	2
<b>2002</b>							
October - December	277	124	838	1,465	3	3	3
July - September	551	248	1,673	2,923	5	7	5
April - June	251	128	943	1,690	4	4	3
January - March	190	98	715	1,282	3	3	3
<b>2001</b>							
October - December	240	123	904	1,619	3	4	3
July - September	560	287	2,111	3,785	7	9	5

1. The numbers of emigrants are final up to June 2002, updated from July 2002 to March 2005 and preliminary from April 2005.



**Table 5-5**  
**Quarterly estimates of demographic components, national perspective — Returning emigrants <sup>1</sup>**

	Canada	Newfoundland and Labrador	Prince Edward Island	Nova Scotia	New Brunswick	Quebec	Ontario
	number						
<b>2006</b>							
January - March	2,977	13	4	64	52	525	1,234
<b>2005</b>							
October - December	2,357	10	3	50	40	416	979
July - September	6,284	30	10	135	108	1,109	2,605
April - June	4,168	19	6	90	72	735	1,728
January - March	2,977	13	4	64	52	525	1,234
<b>2004</b>							
October - December	2,357	10	3	50	40	416	979
July - September	6,284	30	10	135	108	1,109	2,605
April - June	4,168	19	6	90	72	735	1,728
January - March	2,976	13	3	64	52	525	1,234
<b>2003</b>							
October - December	2,357	10	3	50	40	416	979
July - September	6,284	29	10	135	108	1,109	2,606
April - June	4,168	18	5	90	72	736	1,728
January - March	2,976	13	3	64	52	525	1,234
<b>2002</b>							
October - December	2,357	10	3	50	40	416	979
July - September	6,284	28	10	135	108	1,109	2,607
April - June	5,382	26	18	81	95	859	2,352
January - March	2,627	13	7	40	46	420	1,150
<b>2001</b>							
October - December	3,285	16	10	49	58	524	1,437
July - September	6,785	33	23	102	120	1,082	2,964

See footnotes at the end of the table.

Table 5-5 – continued

 Quarterly estimates of demographic components, national perspective — Returning emigrants <sup>1</sup>

	Manitoba	Saskat- chewan	Alberta	British Columbia	Yukon Territory	Northwest Territories	Nunavut
	number						
<b>2006</b>							
January - March	187	34	374	487	3	0	0
<b>2005</b>							
October - December	147	27	296	386	3	0	0
July - September	393	72	788	1,029	5	0	0
April - June	260	48	523	683	4	0	0
January - March	187	34	374	487	3	0	0
<b>2004</b>							
October - December	147	27	296	386	3	0	0
July - September	393	72	788	1,029	5	0	0
April - June	260	48	523	683	4	0	0
January - March	187	34	374	487	3	0	0
<b>2003</b>							
October - December	147	27	296	386	3	0	0
July - September	393	72	788	1,029	5	0	0
April - June	260	48	524	683	4	0	0
January - March	187	34	374	487	3	0	0
<b>2002</b>							
October - December	147	27	296	386	3	0	0
July - September	393	72	788	1,029	5	0	0
April - June	254	74	824	794	4	1	0
January - March	123	36	403	388	1	0	0
<b>2001</b>							
October - December	155	45	503	486	2	0	0
July - September	320	93	1,038	1,002	5	3	0

1. The numbers of returning emigrants are final up to June 2002, updated from July 2002 to March 2005 and preliminary from April 2005.

**Table 5-6**  
**Quarterly estimates of demographic components, national perspective — Net temporary emigrants <sup>1</sup>**

	Canada	Newfoundland and Labrador	Prince Edward Island	Nova Scotia	New Brunswick	Quebec	Ontario
	number						
<b>2006</b>							
January - March	5,218	21	7	77	45	832	2,170
<b>2005</b>							
October - December	5,898	24	8	86	52	939	2,450
July - September	8,761	36	12	128	76	1,396	3,642
April - June	5,686	24	7	83	50	906	2,363
January - March	5,218	21	7	77	45	832	2,170
<b>2004</b>							
October - December	5,898	24	8	86	52	939	2,450
July - September	8,761	36	12	128	76	1,396	3,642
April - June	5,696	24	7	83	50	908	2,367
January - March	5,225	21	7	77	45	833	2,173
<b>2003</b>							
October - December	5,899	24	8	86	52	940	2,450
July - September	8,744	36	12	128	76	1,393	3,635
April - June	5,731	24	7	84	50	913	2,382
January - March	5,258	21	7	78	47	837	2,186
<b>2002</b>							
October - December	5,926	24	8	87	52	944	2,463
July - September	8,643	36	11	127	76	1,378	3,593
April - June	5,774	24	7	85	50	920	2,400
January - March	5,148	22	7	75	44	821	2,141
<b>2001</b>							
October - December	5,670	24	7	83	50	903	2,356
July - September	8,968	37	12	131	79	1,429	3,728

See footnotes at the end of the table.

Table 5-6 – continued

 Quarterly estimates of demographic components, national perspective — Net temporary emigrants <sup>1</sup>

	Manitoba	Saskat- chewan	Alberta	British Columbia	Yukon Territory	Northwest Territories	Nunavut
	number						
<b>2006</b>							
January - March	115	105	599	1,239	4	3	1
<b>2005</b>							
October - December	130	119	677	1,400	6	4	3
July - September	192	176	1,006	2,080	8	6	3
April - June	125	115	652	1,350	5	4	2
January - March	115	105	599	1,239	4	3	1
<b>2004</b>							
October - December	130	119	677	1,400	6	4	3
July - September	192	176	1,006	2,080	8	6	3
April - June	125	115	654	1,352	5	4	2
January - March	115	105	600	1,241	4	3	1
<b>2003</b>							
October - December	130	119	677	1,400	6	4	3
July - September	192	176	1,004	2,075	8	6	3
April - June	126	115	658	1,361	5	4	2
January - March	115	105	603	1,249	5	3	2
<b>2002</b>							
October - December	130	119	680	1,406	6	4	3
July - September	189	173	992	2,051	8	6	3
April - June	127	116	663	1,371	5	4	2
January - March	112	103	592	1,223	4	3	1
<b>2001</b>							
October - December	125	114	650	1,346	5	4	3
July - September	197	179	1,030	2,129	8	6	3

1. The numbers of net temporary emigrants are final up to June 2002, updated from July 2002 to March 2005 and preliminary from April 2005.

Table 5-7

 Quarterly estimates of demographic components, national perspective — Net non-permanent residents <sup>1</sup>

	Canada	Newfoundland and Labrador	Prince Edward Island	Nova Scotia	New Brunswick	Quebec	Ontario
	number						
<b>2006</b>							
January - March	10,425	36	29	35	53	1,404	5,295
<b>2005</b>							
October - December	-21,210	-274	-16	-247	-56	-2,665	-17,962
July - September	14,698	70	21	566	190	955	7,840
April - June	1,290	196	19	-102	-131	-8	-37
January - March	1,027	86	-7	-5	131	-1,043	-42
<b>2004</b>							
October - December	-22,135	-145	-2	-427	21	-3,932	-17,948
July - September	13,815	-103	43	343	361	1,289	8,002
April - June	8,780	185	-14	324	-89	2,036	5,797
January - March	6,809	-106	18	123	54	250	4,542
<b>2003</b>							
October - December	-20,949	13	-47	-206	19	-4,691	-16,528
July - September	12,330	78	77	496	356	1,031	8,098
April - June	15,061	75	4	316	36	1,785	10,039
January - March	13,541	-2	3	-41	19	2,260	8,966
<b>2002</b>							
October - December	-19,441	-161	-19	-429	-50	-3,723	-13,581
July - September	26,967	232	35	448	386	4,054	15,576
April - June	12,685	144	0	358	-44	1,410	9,434
January - March	9,746	44	-4	400	170	907	4,933
<b>2001</b>							
October - December	-19,159	-26	-38	89	-79	-3,341	-14,976
July - September	30,478	-88	30	678	379	4,636	17,699

See footnotes at the end of the table.

Table 5-7 – continued

 Quarterly estimates of demographic components, national perspective — Net non-permanent residents <sup>1</sup>

	Manitoba	Saskat- chewan	Alberta	British Columbia	Yukon Territory	Northwest Territories	Nunavut
	number						
<b>2006</b>							
January - March	154	86	1,498	1,788	28	17	2
<b>2005</b>							
October - December	188	-77	292	-376	-13	-14	10
July - September	83	220	1,696	3,065	-16	9	-1
April - June	278	113	652	302	24	-13	-3
January - March	-10	199	319	1,398	-14	15	0
<b>2004</b>							
October - December	-36	-225	35	595	-42	-29	0
July - September	306	217	860	2,564	-49	-1	-17
April - June	331	153	376	-404	63	8	14
January - March	224	123	500	1,019	24	31	7
<b>2003</b>							
October - December	50	-69	-193	679	-28	58	-6
July - September	190	165	402	1,445	-26	12	6
April - June	406	103	422	1,809	39	26	1
January - March	228	43	659	1,372	29	1	4
<b>2002</b>							
October - December	-95	-126	-800	-428	-21	-6	-2
July - September	518	291	1,482	3,925	40	-25	5
April - June	231	74	581	451	55	-5	-4
January - March	218	140	390	2,509	7	20	12
<b>2001</b>							
October - December	-126	-55	-749	206	-45	-21	2
July - September	419	146	1,653	4,911	-22	41	-4

1. The numbers of net non-permanent residents are final up to June 2002, updated from July 2002 to March 2005 and preliminary from April 2005.

**Table 5-8**  
**Quarterly estimates of demographic components, national perspective — Interprovincial in-migrants <sup>1</sup>**

	Canada	Newfoundland and Labrador	Prince Edward Island	Nova Scotia	New Brunswick	Quebec	Ontario
	number						
<b>2006</b>							
January - March	77,569	2,503	974	3,425	2,679	4,916	14,026
<b>2005</b>							
October - December	61,904	1,919	387	2,793	1,892	4,696	10,439
July - September	102,936	3,183	979	5,651	4,578	9,267	20,924
April - June	90,625	2,985	1,228	4,446	3,315	8,284	20,337
January - March	61,380	2,234	662	3,354	2,222	4,762	12,684
<b>2004</b>							
October - December	53,632	2,113	382	2,669	1,995	5,597	10,822
July - September	83,031	2,675	703	5,782	3,415	7,859	18,346
April - June	78,127	2,365	771	4,573	3,148	7,070	17,504
January - March	56,247	1,908	543	2,839	2,529	4,488	12,448
<b>2003</b>							
October - December	44,713	1,574	505	2,532	1,593	3,874	9,246
July - September	82,293	2,550	751	5,143	3,420	8,295	17,988
April - June	68,827	2,310	683	4,172	2,813	6,081	16,066
January - March	59,732	1,995	587	3,627	2,436	5,276	13,959
<b>2002</b>							
October - December	51,553	1,726	498	3,127	2,105	4,560	12,054
July - September	94,787	3,167	918	5,760	3,879	8,355	22,157
April - June	72,566	2,357	705	4,118	3,183	5,717	17,783
January - March	62,967	2,056	602	3,553	2,716	4,563	16,018
<b>2001</b>							
October - December	54,510	1,619	441	3,093	1,955	4,827	12,065
July - September	100,447	2,752	891	5,567	3,856	9,381	24,217

See footnotes at the end of the table.

Table 5-8 – continued

 Quarterly estimates of demographic components, national perspective — Interprovincial in-migrants <sup>1</sup>

	Manitoba	Saskat- chewan	Alberta	British Columbia	Yukon Territory	Northwest Territories	Nunavut
	number						
<b>2006</b>							
January - March	3,463	3,498	27,963	12,903	283	631	305
<b>2005</b>							
October - December	2,211	2,614	24,997	9,378	258	225	95
July - September	4,566	5,306	29,882	17,275	577	595	153
April - June	3,717	4,830	22,711	17,006	465	804	497
January - March	3,373	3,629	16,386	11,075	213	552	234
<b>2004</b>							
October - December	2,814	2,917	13,123	10,455	233	422	90
July - September	4,975	5,030	18,510	14,583	362	631	160
April - June	3,987	4,407	17,684	15,207	363	664	384
January - March	3,251	3,313	13,869	9,982	293	607	177
<b>2003</b>							
October - December	2,220	2,398	10,715	9,307	208	425	116
July - September	3,843	4,433	18,554	15,910	495	767	144
April - June	3,429	3,804	16,180	12,037	345	678	229
January - March	2,976	3,294	14,036	10,461	308	569	208
<b>2002</b>							
October - December	2,580	2,841	12,121	9,011	275	491	164
July - September	4,722	5,233	22,290	16,569	471	924	342
April - June	3,312	3,715	18,584	11,579	368	640	505
January - March	3,293	3,100	16,033	9,822	361	669	181
<b>2001</b>							
October - December	2,659	2,876	15,261	8,811	311	389	203
July - September	4,696	4,907	25,737	16,947	308	971	217

1. The numbers of interprovincial in-migrants are final up to June 2004, updated from July 2004 to March 2005 and preliminary from April 2005.



**Table 5-9**  
**Quarterly estimates of demographic components, national perspective — Interprovincial out-migrants <sup>1</sup>**

	Canada	Newfoundland and Labrador	Prince Edward Island	Nova Scotia	New Brunswick	Quebec	Ontario
	number						
<b>2006</b>							
January - March	77,569	4,332	899	4,760	3,599	6,872	19,067
<b>2005</b>							
October - December	61,904	2,930	554	3,781	2,611	6,337	16,875
July - September	102,936	3,839	1,025	6,613	5,600	9,942	26,814
April - June	90,625	3,698	1,129	4,573	3,948	10,384	21,696
January - March	61,380	3,296	648	3,953	2,443	5,016	14,225
<b>2004</b>							
October - December	53,632	1,819	457	2,848	2,216	5,543	14,307
July - September	83,031	3,069	963	5,350	3,990	7,891	20,336
April - June	78,127	3,285	845	4,638	3,206	8,671	18,178
January - March	56,247	2,695	452	3,458	2,353	4,779	13,350
<b>2003</b>							
October - December	44,713	1,826	409	2,441	1,872	3,778	11,274
July - September	82,293	2,618	720	5,322	4,019	7,321	21,319
April - June	68,827	2,718	630	4,055	3,025	6,530	15,917
January - March	59,732	2,370	543	3,514	2,623	5,679	13,823
<b>2002</b>							
October - December	51,553	2,035	478	3,032	2,272	4,891	11,927
July - September	94,787	3,758	870	5,575	4,156	9,001	21,932
April - June	72,566	3,056	695	4,074	2,806	8,116	16,197
January - March	62,967	3,644	615	4,133	2,813	5,415	12,891
<b>2001</b>							
October - December	54,510	1,889	470	3,062	2,433	4,736	12,493
July - September	100,447	3,547	797	5,960	4,876	10,571	23,148

See footnotes at the end of the table.

Table 5-9 – continued

 Quarterly estimates of demographic components, national perspective — Interprovincial out-migrants <sup>1</sup>

	Manitoba	Saskat- chewan	Alberta	British Columbia	Yukon Territory	Northwest Territories	Nunavut
	number						
<b>2006</b>							
January - March	5,097	6,439	12,390	12,249	437	1,134	294
<b>2005</b>							
October - December	4,218	5,147	7,938	10,247	385	753	128
July - September	7,603	7,805	16,772	15,601	391	766	165
April - June	6,103	6,715	16,116	14,341	442	1,007	473
January - March	4,161	4,930	11,443	10,018	222	700	325
<b>2004</b>							
October - December	3,318	4,071	9,674	8,551	176	486	166
July - September	5,129	5,273	16,882	12,753	439	643	313
April - June	4,753	5,905	14,966	12,158	487	748	287
January - March	3,247	4,141	10,671	9,688	344	776	293
<b>2003</b>							
October - December	2,583	3,244	9,030	7,624	190	331	111
July - September	5,283	5,782	15,549	13,071	311	713	265
April - June	4,160	5,084	13,199	12,292	315	605	297
January - March	3,604	4,409	11,453	10,673	267	532	242
<b>2002</b>							
October - December	3,104	3,807	9,887	9,191	236	465	228
July - September	5,714	7,013	18,185	16,959	432	818	374
April - June	3,979	5,923	12,832	13,761	436	533	158
January - March	3,843	5,577	10,241	12,286	486	695	328
<b>2001</b>							
October - December	3,731	4,444	9,502	10,771	194	525	260
July - September	6,751	7,474	16,805	18,897	453	832	336

1. The numbers of interprovincial out-migrants are final up to June 2004, updated from July 2004 to March 2005 and preliminary from April 2005.

**Table 5-10**  
**Quarterly estimates of demographic components, national perspective — Total growth <sup>1</sup>**

	Canada	Newfoundland and Labrador	Prince Edward Island	Nova Scotia	New Brunswick	Quebec	Ontario
	number						
<b>2006</b>							
January - March	78,228	-1,900	150	-1,164	-607	12,840	31,183
<b>2005</b>							
October - December	44,797	-1,182	-121	-1,128	-615	7,225	9,541
July - September	107,615	-370	165	227	-280	18,499	48,413
April - June	96,617	-413	287	89	-339	15,605	47,182
January - March	66,847	-965	55	-539	79	8,815	31,783
<b>2004</b>							
October - December	37,044	227	9	-482	-47	7,590	8,274
July - September	95,636	-172	-99	1,312	235	18,408	46,824
April - June	96,381	-560	74	630	251	16,722	49,926
January - March	72,266	-833	169	-317	452	11,131	37,092
<b>2003</b>							
October - December	43,893	-139	99	63	-63	7,756	14,983
July - September	92,673	347	219	831	223	18,161	45,778
April - June	95,646	-214	164	706	204	15,601	51,069
January - March	71,775	-357	49	221	76	11,068	39,434
<b>2002</b>							
October - December	33,280	-346	21	-179	-37	5,726	13,920
July - September	95,862	-63	132	1,047	645	15,818	53,100
April - June	106,744	-341	99	787	709	13,548	65,077
January - March	83,395	-1,439	-12	111	332	10,888	50,081
<b>2001</b>							
October - December	46,625	-226	-25	364	-430	7,917	21,470
July - September	114,572	-531	200	856	-174	16,402	67,770

See footnotes at the end of the table.

Table 5-10 – continued

 Quarterly estimates of demographic components, national perspective — Total growth <sup>1</sup>

	Manitoba	Saskatchewan	Alberta	British Columbia	Yukon Territory	Northwest Territories	Nunavut
	number						
<b>2006</b>							
January - March	1,333	-1,950	25,866	12,704	-81	-347	201
<b>2005</b>							
October - December	239	-2,065	25,063	8,252	-85	-439	112
July - September	553	-1,131	24,480	16,688	247	-17	141
April - June	1,154	-425	17,077	16,163	107	-60	190
January - March	1,443	-136	13,438	12,736	19	27	92
<b>2004</b>							
October - December	1,601	-664	10,432	9,928	71	42	63
July - September	3,129	1,051	11,089	13,828	-65	122	-26
April - June	2,724	-42	12,359	13,929	-5	93	280
January - March	2,344	175	11,634	10,312	24	17	66
<b>2003</b>							
October - December	1,954	-192	9,052	9,907	49	290	134
July - September	1,581	-160	12,115	13,128	211	211	28
April - June	2,414	-36	12,387	12,881	121	253	96
January - March	1,250	-234	10,249	9,568	119	190	142
<b>2002</b>							
October - December	873	-522	8,039	5,534	70	121	60
July - September	1,505	-575	12,613	11,195	130	187	128
April - June	2,051	-1,030	15,534	9,509	45	250	506
January - March	1,454	-1,303	13,774	9,431	-63	132	9
<b>2001</b>							
October - December	435	-707	11,838	5,814	123	-37	89
July - September	359	-1,208	18,447	12,212	-97	322	14

1. Numbers for total growth are final up to June 2002, updated from July 2002 to March 2005 and preliminary from April 2005.

**Table 5-11**  
**Quarterly estimates of demographic components, national perspective — Natural increase <sup>1</sup>**

	Canada	Newfoundland and Labrador	Prince Edward Island	Nova Scotia	New Brunswick	Quebec	Ontario
	number						
<b>2006</b>							
January - March	20,604	-204	-7	-221	-22	5,419	6,991
<b>2005</b>							
October - December	21,809	24	30	-155	-11	5,012	8,573
July - September	35,175	149	92	288	293	7,741	14,193
April - June	29,363	-7	75	6	151	6,439	11,636
January - March	17,302	-115	-17	-124	31	1,962	7,565
<b>2004</b>							
October - December	22,205	15	12	-45	47	4,016	9,254
July - September	34,341	189	80	330	348	7,457	14,080
April - June	28,840	36	79	59	201	5,220	12,197
January - March	18,441	-70	-14	-75	80	2,020	8,187
<b>2003</b>							
October - December	22,283	51	11	-10	90	4,021	9,712
July - September	34,877	229	80	383	397	6,983	14,654
April - June	30,186	76	80	111	251	5,337	12,744
January - March	20,571	-28	-13	-25	130	2,910	8,800
<b>2002</b>							
October - December	21,887	38	6	35	92	3,623	9,645
July - September	33,177	269	55	421	459	5,590	14,472
April - June	29,589	130	47	128	229	5,290	12,833
January - March	20,546	31	-16	82	170	2,439	9,342
<b>2001</b>							
October - December	23,562	7	11	101	54	4,042	10,874
July - September	33,964	342	66	460	453	6,096	14,905

See footnotes at the end of the table.

Table 5-11 – continued

 Quarterly estimates of demographic components, national perspective — Natural increase <sup>1</sup>

	Man.	Sask.	Alta.	B.C.	Y.T.	N.W.T.	Nvt.
	number						
<b>2006</b>							
January - March	807	610	5,021	1,851	34	136	189
<b>2005</b>							
October - December	748	378	4,711	2,219	46	95	139
July - September	1,379	962	6,074	3,646	68	130	160
April - June	1,039	895	5,546	3,221	45	144	173
January - March	713	600	4,684	1,647	32	145	179
<b>2004</b>							
October - December	804	484	4,909	2,393	50	122	144
July - September	1,291	970	6,059	3,203	54	129	151
April - June	1,047	902	5,574	3,167	45	143	170
January - March	722	609	4,726	1,903	33	145	175
<b>2003</b>							
October - December	794	477	4,924	1,904	50	120	139
July - September	1,295	973	6,086	3,468	53	128	148
April - June	1,056	909	5,600	3,672	44	139	167
January - March	739	624	4,768	2,320	32	142	172
<b>2002</b>							
October - December	748	389	4,697	2,330	49	103	132
July - September	1,274	896	5,813	3,616	46	104	162
April - June	1,087	822	5,382	3,302	41	135	163
January - March	930	748	4,565	1,933	56	124	142
<b>2001</b>							
October - December	743	747	4,331	2,349	45	110	148
July - September	1,266	1,029	5,387	3,651	52	118	139

1. Natural increase is final up to December 2002, updated from January 2003 to March 2005 and preliminary from April 2005.

**Table 5-12**  
**Quarterly estimates of demographic components, national perspective — Net interprovincial migration <sup>1</sup>**

	Canada	Newfoundland and Labrador	Prince Edward Island	Nova Scotia	New Brunswick	Quebec	Ontario
	number						
<b>2006</b>							
January - March	0	-1,829	75	-1,335	-920	-1,956	-5,041
<b>2005</b>							
October - December	0	-1,011	-167	-988	-719	-1,641	-6,436
July - September	0	-656	-46	-962	-1,022	-675	-5,890
April - June	0	-713	99	-127	-633	-2,100	-1,359
January - March	0	-1,062	14	-599	-221	-254	-1,541
<b>2004</b>							
October - December	0	294	-75	-179	-221	54	-3,485
July - September	0	-394	-260	432	-575	-32	-1,990
April - June	0	-920	-74	-65	-58	-1,601	-674
January - March	0	-787	91	-619	176	-291	-902
<b>2003</b>							
October - December	0	-252	96	91	-279	96	-2,028
July - September	0	-68	31	-179	-599	974	-3,331
April - June	0	-408	53	117	-212	-449	149
January - March	0	-375	44	113	-187	-403	136
<b>2002</b>							
October - December	0	-309	20	95	-167	-331	127
July - September	0	-591	48	185	-277	-646	225
April - June	0	-699	10	44	377	-2,399	1,586
January - March	0	-1,588	-13	-580	-97	-852	3,127
<b>2001</b>							
October - December	0	-270	-29	31	-478	91	-428
July - September	0	-795	94	-393	-1,020	-1,190	1,069

See footnotes at the end of the table.

Table 5-12 – continued

 Quarterly estimates of demographic components, national perspective — Net interprovincial migration <sup>1</sup>

	Manitoba	Saskat- chewan	Alberta	British Columbia	Yukon Territory	Northwest Territories	Nunavut
	number						
<b>2006</b>							
January - March	-1,634	-2,941	15,573	654	-154	-503	11
<b>2005</b>							
October - December	-2,007	-2,533	17,059	-869	-127	-528	-33
July - September	-3,037	-2,499	13,110	1,674	186	-171	-12
April - June	-2,386	-1,885	6,595	2,665	23	-203	24
January - March	-788	-1,301	4,943	1,057	-9	-148	-91
<b>2004</b>							
October - December	-504	-1,154	3,449	1,904	57	-64	-76
July - September	-154	-243	1,628	1,830	-77	-12	-153
April - June	-766	-1,498	2,718	3,049	-124	-84	97
January - March	4	-828	3,198	294	-51	-169	-116
<b>2003</b>							
October - December	-363	-846	1,685	1,683	18	94	5
July - September	-1,440	-1,349	3,005	2,839	184	54	-121
April - June	-731	-1,280	2,981	-255	30	73	-68
January - March	-628	-1,115	2,583	-212	41	37	-34
<b>2002</b>							
October - December	-524	-966	2,234	-180	39	26	-64
July - September	-992	-1,780	4,105	-390	39	106	-32
April - June	-667	-2,208	5,752	-2,182	-68	107	347
January - March	-550	-2,477	5,792	-2,464	-125	-26	-147
<b>2001</b>							
October - December	-1,072	-1,568	5,759	-1,960	117	-136	-57
July - September	-2,055	-2,567	8,932	-1,950	-145	139	-119

1. Net interprovincial migration numbers are final up to June 2004, updated from July 2004 to March 2005 and preliminary from April 2005.



Table 5-13

 Quarterly estimates of demographic components, national perspective — Net international migration <sup>1</sup>

	Canada	Newfoundland and Labrador	Prince Edward Island	Nova Scotia	New Brunswick	Quebec	Ontario
	number						
<b>2006</b>							
January - March	57,624	133	82	392	335	9,377	29,233
<b>2005</b>							
October - December	22,988	-195	16	15	115	3,854	7,404
July - September	72,440	137	119	901	449	11,433	40,110
April - June	67,254	307	113	210	143	11,266	36,905
January - March	49,545	212	58	184	269	7,107	25,759
<b>2004</b>							
October - December	14,839	-82	72	-258	127	3,520	2,505
July - September	61,295	33	81	550	462	10,983	34,734
April - June	67,541	324	69	636	108	13,103	38,403
January - March	53,825	24	92	377	196	9,402	29,807
<b>2003</b>							
October - December	21,610	62	-8	-18	126	3,639	7,299
July - September	57,796	186	108	627	425	10,204	34,455
April - June	65,460	118	31	478	165	10,713	38,176
January - March	51,204	46	18	133	133	8,561	30,498
<b>2002</b>							
October - December	11,393	-75	-5	-309	38	2,434	4,148
July - September	62,685	259	29	441	463	10,874	38,403
April - June	77,155	228	42	615	103	10,657	50,658
January - March	62,849	118	17	609	259	9,301	37,612
<b>2001</b>							
October - December	23,063	37	-7	232	-6	3,784	11,024
July - September	80,608	-78	40	789	393	11,496	51,796

See footnotes at the end of the table.

Table 5-13 – continued

 Quarterly estimates of demographic components, national perspective — Net international migration <sup>1</sup>

	Manitoba	Saskat- chewan	Alberta	British Columbia	Yukon Territory	Northwest Territories	Nunavut
	number						
<b>2006</b>							
January - March	2,160	381	5,272	10,199	39	20	1
<b>2005</b>							
October - December	1,498	90	3,293	6,902	-4	-6	6
July - September	2,211	406	5,296	11,368	-7	24	-7
April - June	2,501	565	4,936	10,277	39	-1	-7
January - March	1,518	565	3,811	10,032	-4	30	4
<b>2004</b>							
October - December	1,301	6	2,074	5,631	-36	-16	-5
July - September	1,992	324	3,402	8,795	-42	5	-24
April - June	2,443	554	4,067	7,713	74	34	13
January - March	1,618	394	3,710	8,115	42	41	7
<b>2003</b>							
October - December	1,523	177	2,443	6,320	-19	76	-10
July - September	1,726	216	3,024	6,821	-26	29	1
April - June	2,089	335	3,806	9,464	47	41	-3
January - March	1,139	257	2,898	7,460	46	11	4
<b>2002</b>							
October - December	649	55	1,108	3,384	-18	-8	-8
July - September	1,223	309	2,695	7,969	45	-23	-2
April - June	1,631	356	4,400	8,389	72	8	-4
January - March	1,074	426	3,417	9,962	6	34	14
<b>2001</b>							
October - December	764	114	1,748	5,425	-39	-11	-2
July - September	1,148	330	4,128	10,511	-4	65	-6

1. Net international migration numbers are final up to June 2002, updated from July 2002 to March 2005 and preliminary from April 2005.

**Table 5-14**  
**Quarterly estimates of demographic components, national perspective — Total net migration <sup>1</sup>**

	Canada	Newfoundland and Labrador	Prince Edward Island	Nova Scotia	New Brunswick	Quebec	Ontario
	number						
<b>2006</b>							
January - March	57,624	-1,696	157	-943	-585	7,421	24,192
<b>2005</b>							
October - December	22,988	-1,206	-151	-973	-604	2,213	968
July - September	72,440	-519	73	-61	-573	10,758	34,220
April - June	67,254	-406	212	83	-490	9,166	35,546
January - March	49,545	-850	72	-415	48	6,853	24,218
<b>2004</b>							
October - December	14,839	212	-3	-437	-94	3,574	-980
July - September	61,295	-361	-179	982	-113	10,951	32,744
April - June	67,541	-596	-5	571	50	11,502	37,729
January - March	53,825	-763	183	-242	372	9,111	28,905
<b>2003</b>							
October - December	21,610	-190	88	73	-153	3,735	5,271
July - September	57,796	118	139	448	-174	11,178	31,124
April - June	65,460	-290	84	595	-47	10,264	38,325
January - March	51,204	-329	62	246	-54	8,158	30,634
<b>2002</b>							
October - December	11,393	-384	15	-214	-129	2,103	4,275
July - September	62,685	-332	77	626	186	10,228	38,628
April - June	77,155	-471	52	659	480	8,258	52,244
January - March	62,849	-1,470	4	29	162	8,449	40,739
<b>2001</b>							
October - December	23,063	-233	-36	263	-484	3,875	10,596
July - September	80,608	-873	134	396	-627	10,306	52,865

See footnotes at the end of the table.

Table 5-14 – continued

 Quarterly estimates of demographic components, national perspective — Total net migration <sup>1</sup>

	Manitoba	Saskat- chewan	Alberta	British Columbia	Yukon Territory	Northwest Territories	Nunavut
	number						
<b>2006</b>							
January - March	526	-2,560	20,845	10,853	-115	-483	12
<b>2005</b>							
October - December	-509	-2,443	20,352	6,033	-131	-534	-27
July - September	-826	-2,093	18,406	13,042	179	-147	-19
April - June	115	-1,320	11,531	12,942	62	-204	17
January - March	730	-736	8,754	11,089	-13	-118	-87
<b>2004</b>							
October - December	797	-1,148	5,523	7,535	21	-80	-81
July - September	1,838	81	5,030	10,625	-119	-7	-177
April - June	1,677	-944	6,785	10,762	-50	-50	110
January - March	1,622	-434	6,908	8,409	-9	-128	-109
<b>2003</b>							
October - December	1,160	-669	4,128	8,003	-1	170	-5
July - September	286	-1,133	6,029	9,660	158	83	-120
April - June	1,358	-945	6,787	9,209	77	114	-71
January - March	511	-858	5,481	7,248	87	48	-30
<b>2002</b>							
October - December	125	-911	3,342	3,204	21	18	-72
July - September	231	-1,471	6,800	7,579	84	83	-34
April - June	964	-1,852	10,152	6,207	4	115	343
January - March	524	-2,051	9,209	7,498	-119	8	-133
<b>2001</b>							
October - December	-308	-1,454	7,507	3,465	78	-147	-59
July - September	-907	-2,237	13,060	8,561	-149	204	-125

1. Total net migration numbers are final up to June 2002, updated from July 2002 to March 2005 and preliminary from April 2005.

**Table 6**  
**Quarterly estimates of interprovincial migrants by province or territory of origin and destination, Canada, January to March 2006 P**

Origin	Destination												
	Newfoundland and Labrador	Prince Edward Island	Nova Scotia	New Brunswick	Quebec	Ontario	Manitoba	Saskatchewan	Alberta	British Columbia	Yukon Territory	Northwest Territories	Nunavut
	number												
Newfoundland and Labrador	.	80	267	178	8	1,246	44	12	2,180	157	12	50	98
Prince Edward Island	44	.	203	158	19	196	4	34	241	0	0	0	0
Nova Scotia	424	185	.	519	168	1,477	83	7	1,604	275	18	0	0
New Brunswick	170	105	583	.	536	870	37	9	1,050	223	8	8	0
Quebec	82	95	163	431	.	3,761	46	53	1,353	826	0	42	20
Ontario	1,031	372	1,266	878	3,253	.	1,293	359	6,600	3,873	5	99	38
Manitoba	53	22	101	57	79	1,131	.	545	1,951	1,085	8	24	41
Saskatchewan	36	59	30	42	34	382	681	.	4,335	802	19	14	5
Alberta	507	50	508	218	431	2,268	832	1,914	.	5,374	62	184	42
British Columbia	105	0	280	167	363	2,470	414	486	7,736	.	101	97	30
Yukon Territory	0	0	0	5	15	17	0	12	183	147	.	58	0
Northwest Territories	40	0	12	9	0	111	10	67	691	113	50	.	31
Nunavut	11	6	12	17	10	97	19	0	39	28	0	55	.
In-migrants	2,503	974	3,425	2,679	4,916	14,026	3,463	3,498	27,963	12,903	283	631	305
Out-migrants	4,332	899	4,760	3,599	6,872	19,067	5,097	6,439	12,390	12,249	437	1,134	294
Net	-1,829	75	-1,335	-920	-1,956	-5,041	-1,634	-2,941	15,573	654	-154	-503	11
<b>Total number of migrants: 77,569</b>													

P Preliminary data.

**Note:** Preliminary estimates based on data from the Child Tax Benefit (CTB) Program and Fjk factors calculated using 2001-2002, 2002-2003 and 2003-2004 tax file data from Canada Revenue Agency.

# Quality of estimates

## Post-2001 postcensal population estimates

The postcensal estimates contain certain inaccuracies stemming from:

- (a) errors in the 2001 Census data (the base population on which these estimates were constructed) and
- (b) imperfections in other data sources and the method used to estimate the components.

### Errors in census data

Census data for total population by province or territory are affected by coverage errors. These errors occur when dwellings and/or individuals are missed, incorrectly included or counted more than once. Following each census, Statistics Canada undertakes coverage studies to measure these errors. The main study are the Reverse Record Check Survey (RRC) and the Census Overcoverage Study (COS). Based on these studies, estimates of net undercoverage (which is equal to the difference between undercoverage and overcoverage) are produced. Demography Division adjusts the population enumerated in the census by province and territory using these estimates.

#### Text table 1

#### Estimated net undercoverage of population for Canada, provinces and territories, 1996 and 2001 Censuses

	1996 <sup>1</sup>		2001 <sup>1</sup>	
	Number	Rate	Number	Rate
	in percent		in percent	
<b>Canada</b>	<b>712,119</b>	<b>2.41</b>	<b>958,969</b>	<b>3.10</b>
Newfoundland and Labrador	8,840	1.58	9,401	1.80
Prince Edward Island	896	0.66	1,325	0.97
Nova Scotia	21,126	2.27	24,521	2.63
New Brunswick	14,073	1.87	20,095	2.68
Quebec	102,680	1.42	152,880	2.07
Ontario	304,139	2.75	452,309	3.81
Manitoba	19,052	1.68	31,013	2.70
Saskatchewan	28,599	2.81	21,812	2.18
Alberta	71,971	2.60	74,834	2.45
British Columbia	137,446	3.56	164,805	4.05
Yukon Territory	467	1.50	1,423	4.73
Northwest Territories	1,979	4.75	3,295	8.11
Nunavut	851	3.33	1,256	4.49

1. The levels and rates are based on the Reverse Record Check (RRC) and the Overcoverage Study and include non-permanent residents.

The adjustment also incorporates the results of a study on the estimates of the number of people living on incompletely enumerated Indian reserves to complete the corrections for coverage errors in the census. The results of the coverage studies contain mainly sampling errors. For further information regarding the main coverage studies, please see the following document on Statistics Canada's web site: 2001 Census Technical Report on Coverage.

### Errors coming from methodology and other data sources

Errors due to estimation methodologies and data sources other than the census are can also be significant.

Since the law requires the recording of vital statistics, births and deaths data meet very high standards. Nevertheless, since preliminary estimates are derived, they can be slightly different from final estimates.

With respect to immigrants and non-permanent residents, Citizenship and Immigration Canada administers special data files on both of these components. Since immigration is controlled by law (the Immigration Act), data on immigrants and non-permanent residents are compiled upon arrival in Canada. These data represent only "legal" immigration and exclude illegal immigrants. Thus, for the "legal" part of international movement into Canada, the data are considered to be of high quality.

However, some biases such as the difference between the stated province of intended residence at the time of arrival and the actual province of residence, may persist. Finally, since information provided by the Visitor Data System from Citizenship and Immigration Canada is not complete (age and sex of dependents, province of residence for certain groups of permit holders), estimates of nonpermanent residents are more prone to error than data on immigrants.

Estimates of the number of emigrants and returning emigrants are both derived using Child Tax Benefit (CTB) data provided by Canada Revenue Agency (CRA). Data are adjusted to take into account the incomplete coverage of the CTB program and to derive the emigration and returning emigration of adults. These adjustments and the delay in obtaining the data are the two main sources of errors.

As current information on the number of persons living temporarily abroad does not exist, estimates are based on the Reverse Record Check (RRC) and the census. Estimates for the intercensal period, distributed equally among the five years, are maintained constant for the postcensal period. Provincial/territorial distributions are obtained from RRC. Moreover, assumptions were made to allow for the distribution of annual to a quarterly level. Any geographical or quarterly variation may introduce error in the estimation of these components.

While preliminary estimates of interprovincial migration are produced using data from the Child Tax Benefit (CTB) program, final estimates are calculated from the annual taxfile received from Canada Revenue Agency (CRA). Since the two estimates of interprovincial migration are produced from different sources of information, they are more subject to error.

## **Quality assessment**

In order to assess the quality of our estimates, two evaluation measures are used : precocity errors and errors of closure.

### **Precocity errors**

The quality of preliminary estimates of components is analysed using precocity errors. Precocity error, which is calculated on a quarterly basis, is defined as the difference between preliminary and final estimate of a particular component in terms of its relative proportion of the total population for the relevant geographical area. It can be calculated for both population and component estimates.

Precocity error allows for useful comparisons between components, as well as between provinces and territories or geographical areas of different population size. Note that when compared to the total population for an area, the differences between preliminary and final estimates of the components are quite small. There are, however, differences in the amount of impact on the population estimates between components and between provinces and territories.

Generally speaking, net interprovincial migration yields the greatest precocity errors. This is likely the result of the use of different data sources for preliminary and final estimates of interprovincial migration. In most years and for most provinces/territories, births, deaths and immigration estimates yielded the smallest precocity errors. For immigration estimates, this reflects the completeness of the data source and the availability of data for the more timely preliminary estimates. In the case of births and deaths, small precocity errors support the use of short-term projections for preliminary estimates.

According to the analysis of the most recent precocity errors and assuming that the quality of the basic data remains constant, the present postcensal estimates should have an acceptable degree of reliability.



**Text table 2**  
**Quarterly precocity errors for population and components, Canada, provinces and territories, 2001-2002**

Quarter/Provinces or territories	Population	Births	Deaths	Immigration	Emigration	Returning emigration	Net temporary emigration	Net NPR	In-migrants	Out-migrants	Net
in per thousand											
<b>Canada</b>											
July to September 2001	-1.29	0.05	0.03	-0.01	0.22	0.00	0.07	-1.01	0.29	0.29	n/d
October to December 2001	-0.55	0.02	0.09	0.00	0.20	0.00	0.08	-0.21	0.15	0.15	n/d
January to March 2002	-0.28	0.05	0.17	-0.01	0.07	0.02	0.04	-0.06	0.19	0.19	n/d
April to June 2002	-0.26	0.05	0.06	-0.01	0.06	0.01	0.04	-0.16	0.36	0.36	n/d
<b>Newfoundland and Labrador</b>											
July to September 2001	0.19	-0.02	0.06	0.02	0.10	-0.02	0.04	-0.40	1.34	0.54	0.80
October to December 2001	0.43	0.18	0.09	-0.02	0.07	-0.01	0.03	-0.08	0.82	0.26	0.56
January to March 2002	-0.13	0.02	0.32	-0.01	0.03	0.00	0.02	-0.02	0.96	0.71	0.25
April to June 2002	0.45	0.07	0.12	-0.01	0.03	-0.01	0.02	-0.05	1.58	0.97	0.61
<b>Prince Edward Island</b>											
July to September 2001	1.35	0.08	-0.20	0.05	0.04	0.03	0.01	-0.34	1.35	-0.03	1.38
October to December 2001	0.75	0.49	0.31	-0.06	0.04	0.01	0.02	-0.05	0.58	-0.15	0.73
January to March 2002	1.46	0.35	-0.24	0.01	0.01	0.04	0.01	0.04	0.88	0.07	0.80
April to June 2002	1.90	0.32	-0.01	0.00	0.01	0.03	0.01	-0.01	1.87	0.31	1.56
<b>Nova Scotia</b>											
July to September 2001	-0.55	0.18	0.07	-0.01	-0.04	0.00	-0.04	-0.79	0.51	0.46	0.05
October to December 2001	-0.07	0.13	0.15	0.02	0.03	0.00	-0.02	-0.06	0.26	0.24	0.02
January to March 2002	0.06	0.15	0.16	0.00	-0.02	0.01	-0.02	0.02	0.33	0.32	0.01
April to June 2002	0.16	0.14	-0.01	-0.02	-0.03	0.00	-0.03	-0.04	0.60	0.60	0.00
<b>New Brunswick</b>											
July to September 2001	0.03	0.14	0.05	-0.02	-0.04	0.02	0.00	-0.53	0.82	0.39	0.43
October to December 2001	0.23	0.13	0.04	0.00	0.02	0.01	0.01	-0.09	0.38	0.14	0.24
January to March 2002	-0.09	0.03	0.39	0.00	-0.01	0.02	0.00	0.03	0.54	0.33	0.21
April to June 2002	0.47	0.23	0.06	0.00	-0.03	0.03	0.00	-0.03	0.69	0.41	0.28
<b>Quebec</b>											
July to September 2001	-1.12	0.02	-0.01	-0.01	0.20	-0.01	0.08	-0.59	0.02	0.27	-0.25
October to December 2001	-0.49	0.01	-0.01	0.00	0.17	0.00	0.07	-0.15	0.00	0.12	-0.12
January to March 2002	-0.24	0.04	-0.04	-0.01	0.07	0.01	0.05	-0.08	0.01	0.15	-0.14
April to June 2002	-0.36	0.01	-0.04	-0.01	0.07	0.00	0.04	-0.11	0.08	0.25	-0.18
<b>Ontario</b>											
July to September 2001	-1.71	0.03	0.05	-0.01	0.38	-0.01	0.12	-1.29	0.25	0.14	0.11
October to December 2001	-0.87	-0.02	0.16	0.00	0.29	0.00	0.12	-0.31	0.12	0.08	0.04
January to March 2002	-0.47	0.07	0.33	0.00	0.13	0.02	0.07	-0.11	0.17	0.09	0.07
April to June 2002	-0.50	0.07	0.15	0.00	0.13	0.01	0.07	-0.27	0.25	0.21	0.04
<b>Manitoba</b>											
July to September 2001	-1.09	0.03	0.08	-0.02	0.15	-0.07	0.09	-0.57	0.90	1.04	-0.14
October to December 2001	-0.43	0.14	0.11	0.01	0.15	-0.03	0.08	-0.18	0.53	0.56	-0.03
January to March 2002	-0.43	-0.06	0.34	-0.01	0.05	-0.01	0.05	0.00	0.71	0.61	0.09
April to June 2002	-0.22	0.19	0.08	-0.01	0.04	-0.05	0.05	-0.06	0.74	0.88	-0.14
<b>Saskatchewan</b>											
July to September 2001	-0.45	0.08	0.06	-0.02	0.07	0.01	0.05	-0.37	1.22	1.18	0.04
October to December 2001	-0.38	-0.02	0.19	0.01	0.08	0.01	0.05	-0.09	0.70	0.67	0.03
January to March 2002	-0.51	0.04	0.31	-0.01	0.02	0.01	0.03	-0.01	0.75	0.93	-0.18
April to June 2002	0.11	0.09	0.08	-0.01	0.02	0.02	0.02	-0.03	1.14	0.99	0.15
<b>Alberta</b>											
July to September 2001	-1.29	0.15	0.04	-0.01	0.36	0.02	0.12	-0.85	0.26	0.35	-0.09
October to December 2001	-0.61	0.11	0.15	0.00	0.29	0.01	0.12	-0.13	0.16	0.20	-0.04
January to March 2002	-0.30	0.12	0.22	-0.02	0.12	0.04	0.07	-0.02	0.20	0.22	-0.02
April to June 2002	-0.25	0.01	0.00	-0.02	0.12	0.03	0.06	-0.06	0.71	0.75	-0.03
<b>British Columbia</b>											
July to September 2001	-1.30	0.01	0.00	-0.01	-0.15	0.02	-0.08	-1.59	0.20	0.18	0.03
October to December 2001	-0.15	0.00	0.00	0.03	0.04	0.01	-0.01	-0.18	0.11	0.09	0.01
January to March 2002	0.17	-0.02	-0.10	-0.02	-0.05	0.03	-0.04	-0.03	0.12	0.11	0.01
April to June 2002	0.19	0.02	0.00	-0.03	-0.10	0.03	-0.06	-0.09	0.33	0.25	0.08
<b>Yukon Territory</b>											
July to September 2001	-3.05	0.13	0.20	-0.03	0.56	0.10	0.60	-0.50	-0.10	1.29	-1.39
October to December 2001	-2.90	-0.60	-0.10	0.10	0.33	0.03	0.43	-0.27	-1.03	0.47	-1.50
January to March 2002	-3.88	-0.10	-0.20	0.00	0.13	0.10	0.36	-0.10	-0.66	2.82	-3.48
April to June 2002	-0.66	0.56	0.30	0.03	0.20	0.10	0.37	-0.40	0.86	0.96	-0.10
<b>Northwest Territories</b>											
July to September 2001	-14.99	0.15	0.07	-0.05	-0.10	0.02	0.66	-1.71	-9.50	3.26	-12.76
October to December 2001	-5.42	0.27	-0.05	0.02	-0.02	0.07	0.51	-0.12	-2.77	2.45	-5.23
January to March 2002	-9.03	-0.44	-0.02	0.00	0.00	0.05	0.39	-0.10	-6.57	1.61	-8.17
April to June 2002	0.15	-0.63	0.00	-0.07	-0.02	0.07	0.39	0.00	1.65	0.51	1.14
<b>Nunavut</b>											
July to September 2001	13.55	1.92	0.21	0.04	-0.07	0.00	0.64	-0.21	13.05	0.46	12.59
October to December 2001	3.77	0.11	-0.11	0.04	-0.04	0.00	0.39	-0.04	2.56	-1.35	3.91
January to March 2002	9.14	0.53	0.43	-0.04	-0.11	0.00	0.39	0.00	7.79	-1.56	9.35
April to June 2002	-7.51	-0.04	0.04	-0.07	-0.07	0.00	0.39	0.00	-6.41	0.64	-7.05

## Errors of closure

The error of closure measures the exactness level of the final postcensal estimates. It can be defined as the difference between the enumerated population of the most recent census (after adjustments for net undercoverage) and the most current postcensal population estimates as of census day.

The error of closure comes from two sources: differences in the amount of net undercoverage and errors in the components of population change over the intercensal period. This can be calculated for population estimates and for age, sex and marital status. With each 5-year intercensal period, the error of closure can only be calculated with the release of census data and estimates of net undercoverage.

By dividing the error of closure by the adjusted census population rates are relatively small at the national level (0.38% for 1996 and 0.15% for 2001). At the provincial and territorial level, differences are understandably larger, since the estimates are also affected by errors in estimating interprovincial migration. Nevertheless, the provincial/territorial final postcensal estimates generally fall within 1% of the adjusted census population.

### Text table 3

#### Error of closure of the estimates of total population for Canada, provinces and territories, July 1, 1996 and 2001

	1996		2001	
	Number	Rate	Number	Rate
	in percent		in percent	
<b>Canada</b>	<b>113,416</b>	<b>0.38</b>	<b>46,467</b>	<b>0.15</b>
Newfoundland and Labrador	8,840	1.58	11,416	2.19
Prince Edward Island	411	0.30	1,481	1.08
Nova Scotia	6,446	0.69	9,034	0.97
New Brunswick	5,634	0.75	4,638	0.62
Quebec	96,449	1.33	-320	0.00
Ontario	56,479	0.51	8,857	0.07
Manitoba	-852	-0.08	-1,121	-0.10
Saskatchewan	-7,400	-0.73	15,952	1.59
Alberta	-8,124	-0.29	714	0.02
British Columbia	-43,313	-1.12	-4,357	-0.11
Yukon Territory	-244	-0.78	-354	-1.18
Northwest Territories	-42	-0.10	481	1.18
Nunavut	-868	-3.39	46	0.16

**Note:** The error of closure is equal to the July 1 postcensal estimates minus the census count adjusted to July 1 and for net undercount. The percentage is: error of closure, divided by the census count adjusted to July 1 and for net undercount, multiplied by 10

## Explanatory notes for the tables

---

**Table 3**  
**Quarterly population estimates and aggregated demographic components**

Population	Population estimates are final postcensal from July 1, 2001 to July 1, 2002, updated postcensal from October 1, 2002 to April 1, 2005 and preliminary postcensal from July 1, 2005.
Natural increase	Natural increase is final up to December 2002, updated from January 2003 to March 2005 and preliminary from April 2005.
Interprovincial migration	Net interprovincial migration numbers are final up to June 2004, updated from July 2004 to March 2005 and preliminary from April 2005.
International migration	Net international migration numbers are final up to June 2002, updated from July 2002 to March 2005 and preliminary from April 2005
Total migration	Total net migration numbers are final up to June 2002, updated from July 2002 to March 2005 and preliminary from April 2005
Total growth	Numbers for total growth are final up to June 2002, updated from July 2002 to March 2005 and preliminary from April 2005

**Table 4**  
**Quarterly estimates of demographic components**

Births	The numbers of births are final up to December 2003, updated from January 2004 to March 2005 and preliminary from April 2005.
Deaths	The numbers of deaths are final up to December 2002, updated from January 2003 to March 2005 and preliminary from April 2005.
In-migrants	The numbers of interprovincial in-migrants are final up to June 2004, updated from July 2004 to March 2005 and preliminary from April 2005.
Out-migrants	The numbers of interprovincial out-migrants are final up to June 2004, updated from July 2004 to March 2005 and preliminary from April 2005
Immigrants	The numbers of immigrants are final up to December 2002, updated from January 2003 to March 2005 and preliminary from April 2005.
Emigrants	The numbers of emigrants are final up to June 2002, updated from July 2002 to March 2005 and preliminary from April 2005.

Returning emigrants	The numbers of returning emigrants are final up to June 2002, updated from July 2002 to March 2005 and preliminary from April 2005.
Net temporary emigrants	The numbers of net temporary emigrants are final up to June 2002, updated from July 2002 to March 2005 and preliminary from April 2005.
Net non-permanent residents	The numbers of net non-permanent residents are final up to June 2002, updated from July 2002 to March 2005 and preliminary from April 2005.

# Appendix I

---

## Glossary

### Annualized rate

Refers to the ratio of the estimated number of events converted to an annual basis divided by the average quarterly populations. In this respect, birth, death, immigration rates, etc are calculated. Generally, the rate is expressed in per 1,000.

### Census coverage

**Net undercoverage:** Difference between undercoverage and overcoverage.

**Overcoverage:** Number of persons who should not have been counted in the census or who were counted more than once.

**Undercoverage:** Number of persons who were intended to have been enumerated in a census but were not enumerated.

### Components of demographic growth

Any of the classes of events generating population movement variations. Births, deaths and migrations are the components responsible for the variation since they alter the total population.

### Emigrants

Canadian citizen or **immigrant** who has left Canada to establish a permanent residence in another country.

### Error of closure

Difference between the **postcensal estimate** for the same date as the census and the results of the census adjusted for **net undercoverage**.

### Immigrant

Within the framework of this publication, the term immigrant refers to **landed immigrant**. A landed immigrant is a person who does not have Canadian citizenship but was granted the right by immigration authorities to live in Canada on a permanent basis.oes here

### International migration

International migration represents movement of population between Canada and a foreign country which involves a change in the usual place of residence. A distinction is made with regard to **immigrants, emigrants, returning emigrants, net temporary emigrants** and **net non-permanent residents**.

### Interprovincial migration

Interprovincial migration represents movement from one province or territory involving a permanent change in residence. A person who takes up residence in another province or territory is an **out-migrant** with reference to the province or territory of origin and an **in-migrant** with reference to the province or territory of destination.

### Natural increase

Variation in population size over a given period as a result of the difference between the numbers of births and deaths.

### Net international migration

Net international migration is obtained according to the following formula: **Immigrants + returning emigrants + net non permanent residents – (emigrants + net temporary emigrants)**

### Net interprovincial migration

Net interprovincial migration represents the difference between **in-migrants** and **out-migrants** for a given province or territory.

### Net non-permanent residents

Net non-permanent residents represent the variation in the number of non-permanent residents between two dates.

### Non-permanent residents

A non permanent resident belongs to one of the five following groups:

- persons residing in Canada claiming refugee status;
- persons residing in Canada who hold a study permit;
- persons residing in Canada who hold a work permit;
- persons residing in Canada who hold a minister's permit;
- all non-Canadian born dependants of persons claiming refugee status, or of persons holding study permits, work permits or minister's permits and living in Canada.

### Net temporary emigration

Net temporary emigration represents the variation in the number of temporary emigrants between two dates. Temporary emigration includes Canadian citizens and **immigrants** living temporarily abroad who have not maintained a usual place of residence in Canada.

### Population

Estimated population and population according to the census are both defined as being the number of Canadians whose usual place of residence is in that area, regardless of where they happened to be on Census Day. Also included are any Canadians staying in a dwelling in that area on Census Day and having no usual place of residence elsewhere in Canada, as well as those considered **non-permanent residents**.

### Population estimate

- (a) **postcensal**: Population estimate produced by using data from the most recent available census adjusted for **net undercoverage** and estimate of the **components of demographic growth** since that last census. This estimate can be preliminary, updated or final.
- (b) **intercensal**: Population estimate derived by using **postcensal estimates** and data adjusted for **net undercoverage** of censuses preceding and following the year in question.

### Population growth or total growth

Variation of population size between two dates. It can also be obtained by summing the **natural increase**, **total net migration** and if possible, **residual deviation**. It can be positive or negative.

### Residual deviation

Difference between demographic **population growth** calculated using **intercensal estimates** of population between two dates and that obtained by the sum of the components for the same period. This deviation results from the distribution of the **error of closure** between years within the quinquennial period.

### Returning emigrants

Canadian citizen or **immigrant** having previously emigrated from Canada and subsequently returned to the country.

### Total net migration

Sum of **net international** and **net interprovincial** migration.

### Vital events

Includes all the demographic events (that is to say births, deaths, marriages and divorces) for which there exists a legal requirement to inform the Provincial or Territorial Registrar's Office.

## Appendix II

---

### Source and remarks

#### Base population

May 15, 2001 Census of Population, adjusted to July 1 and for net undercount.

Statistics Canada, **Census of Canada, 2001**, Catalogue no. 93-360-X.

#### Births and deaths

Statistics Canada, Health Statistics Division.

Statistics Canada, Demography Division, Catalogue no. 91-002-X, Quarterly, Analytical table 5.

#### Immigration

Citizenship and Immigration Canada

#### Emigrants

Statistics Canada, Demography Division - from data on emigrant children from the Child Tax Benefit program (CTB) from Canada Revenue Agency files - CRA and data from the "U.S.Department of Homeland Security, Office of Immigration Statistics"

#### Returning emigrants

Statistics Canada, Demography Division – based on data from the CTB program and adjustment factors calculated using CRA files.

#### Net temporary emigrants

Statistics Canada, Demography Division – based on data from the Reverse Record Check (RRC), 1996 and 2001 Censuses of Canada.

#### Non-permanent residents

Statistics Canada, Demography Division – based on data provided by Citizenship and Immigration Canada.

#### Interprovincial migration

Statistics Canada, Demography Division – based on the CTB program and adjustment factors calculated using CRA files.