



Catalogue no. 71-001-XIE

Labour force information

Not for release before 7 A.M. E.S.T.

Friday, January 6, 2006



Week ending December 10, 2005



Statistics
Canada Statistique
Canada

Canada

How to obtain more information

Specific inquiries about this product and related statistics or services should be directed to: Labour Force Survey Program, Labour Statistics Division, Statistics Canada, Ottawa, Ontario, K1A 0T6 (telephone: (613) 951-4090, toll free number: 1 866 873-8788, fax: (613) 951-2869 or by e-mail address: labour@statcan.ca).

For information on the wide range of data available from Statistics Canada, you can contact us by calling one of our toll free numbers. You can also contact us by e-mail or by visiting our website.

National inquiries line **1 800 263-1136**

National telecommunications device for the hearing impaired **1 800 363-7629**

Depository Services Program inquiries **1 800 700-1033**

Fax line for Depository Services Program **1 800 889-9734**

E-mail inquiries infostats@statcan.ca

Website www.statcan.ca

Ordering and subscription information

This product, Catalogue no. 71-001-XIE, is published monthly in electronic format on the Statistics Canada Internet site at a single price of CAN\$9.00 per issue (PDF) and CAN\$84.00 for a one-year subscription (HTML). To obtain single issues or to subscribe, visit our website at www.statcan.ca, and select Products and Services.

Standards of service to the public

Statistics Canada is committed to serving its clients in a prompt, reliable and courteous manner and in the official language of their choice. To this end, the Agency has developed *standards of service* which its employees observe in serving its clients. To obtain a copy of these service standards, please contact Statistics Canada toll free at 1 800 263-1136. The service standards are also published on www.statcan.ca under About Statistics Canada > Providing services to Canadians.



Statistics Canada
Labour Statistics Division
Labour Force Survey Program

Labour force information

Not for release before 7 A.M. E.S.T.

Friday, January 6, 2006

Week ending December 10, 2005

Published by authority of the Minister responsible for Statistics Canada

© Minister of Industry, 2006

All rights reserved. Use of this product is limited to the licensee and its employees. The product cannot be reproduced and transmitted to any person or organization outside of the licensee's organization.

Reasonable rights of use of the content of this product are granted solely for personal, corporate or public policy research, or educational purposes. This permission includes the use of the content in analyses and the reporting of results and conclusions, including the citation of limited amounts of supporting data extracted from the data product in these documents. These materials are solely for non-commercial purposes. In such cases, the source of the data must be acknowledged as follows: Source (or "Adapted from", if appropriate): Statistics Canada, name of product, catalogue, volume and issue numbers, reference period and page(s). Otherwise, users shall seek prior written permission of Licensing Services, Marketing Division, Statistics Canada, Ottawa, Ontario, Canada, K1A 0T6.

January 2006

Catalogue no. 71-001-XIE

ISSN 1492-5478

Frequency: Monthly

Ottawa

La version française de cette publication est disponible sur demande (n° 71-001-XIF au catalogue).

Note of appreciation

Canada owes the success of its statistical system to a long standing partnership between Statistics Canada, the citizens of Canada, its businesses, governments and other institutions. Accurate and timely statistical information could not be produced without their continued cooperation and goodwill.

User information

Symbols

The following standard symbols are used in Statistics Canada publications:

- . not available for any reference period
- .. not available for a specific reference period
- ... not applicable
- 0 true zero or a value rounded to zero
- 0^s value rounded to 0 (zero) where there is a meaningful distinction between true zero and the value that was rounded
- p preliminary
- r revised
- x suppressed to meet the confidentiality requirements of the *Statistics Act*
- E use with caution
- F too unreliable to be published

Special requests (\$)

Custom tabulations can be arranged on an ad hoc or regular basis. This service enables you to specify tables and time series to meet your own requirements. The cost varies according to the request. For more information, contact us toll-free at 1-866-873-8788 or e-mail us at labour@statcan.ca.

Schedule of LFS releases

Reference period - Week ending	Release date
January 21, 2006	February 10, 2006
February 18, 2006	March 10, 2006
March 18, 2006	April 7, 2006
April 15, 2006	May 5, 2006
May 20, 2006	June 9, 2006
June 17, 2006	July 7, 2006
July 15, 2006	August 4, 2006
August 19, 2006	September 8, 2006
September 16, 2006	October 6, 2006
October 14, 2006	November 3, 2006
November 11, 2006	December 1, 2006
December 9, 2006	January 5, 2007

Latest LFS release in *The Daily* (free)

Table of contents

Highlights	5
Analysis — December 2005	6
Charts	
1. Employment and unemployment rates, Canada, seasonally adjusted	5
2. Employment and unemployment indicators, Canada, seasonally adjusted	9
3. Employment and unemployment indicators, Canada, seasonally adjusted	10
4. Index of employment by industry, Canada, seasonally adjusted, January, 2002=100	11
5. Index of employment by industry, Canada, seasonally adjusted, January 2002 = 100	12
6. Index of employment by industry, Canada, seasonally adjusted, January 2002 = 100	13
7. Index of employment by province, seasonally adjusted, January 2002 = 100	14
8. Index of employment by province, seasonally adjusted, January 2002 = 100	15
Related products	16
Statistical tables	
1 Labour force characteristics by age and sex, Canada, seasonally adjusted	24
2 Employment by class of worker and industry, Canada, seasonally adjusted	25
3 Labour force characteristics by province, seasonally adjusted	26
4 Selected labour force characteristics (seasonally adjusted)	28
4-1 Newfoundland and Labrador	28
4-2 Prince Edward Island	29
4-3 Nova Scotia	30
4-4 New Brunswick	31
4-5 Quebec	32
4-6 Ontario	33
4-7 Manitoba	34
4-8 Saskatchewan	35
4-9 Alberta	36
4-10 British Columbia	37

Table of contents – continued

5	Labour force characteristics by census metropolitan area (seasonally adjusted)	38
5-1	3 month moving average	38
5-2	Monthly	43
6	Labour force characteristics by economic region¹ and for Yukon Territory and Northwest Territories, unadjusted, 3 month moving average ending in December 2004 and December 2005	44
7	Average usual hours and wages of employees by selected characteristics, Canada, unadjusted	50
8	Regional unemployment rates used by the Employment Insurance Program,¹ seasonally adjusted, 3 month moving average	51
	Data quality	53

Highlights

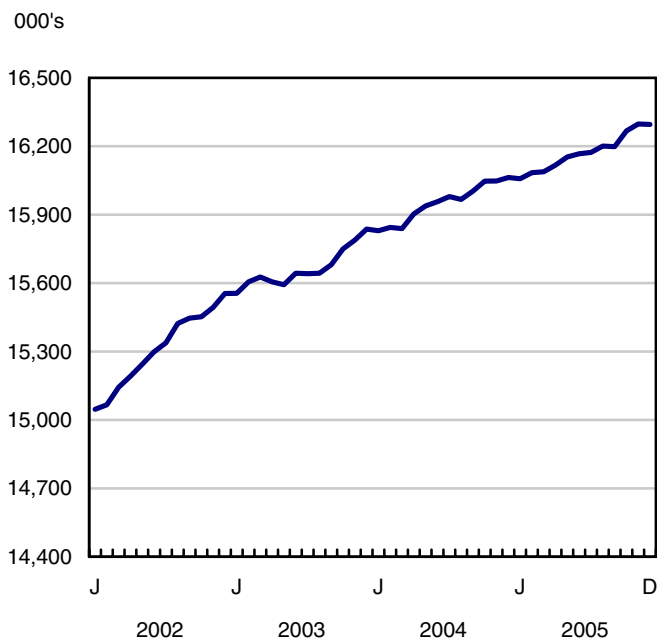
December 2005

In December, there was little overall change in employment as an increase of 36,000 full-time jobs was offset by part-time losses of 38,000. The unemployment rate edged up 0.1 percentage points to 6.5% as more people entered the labour market in search of work.

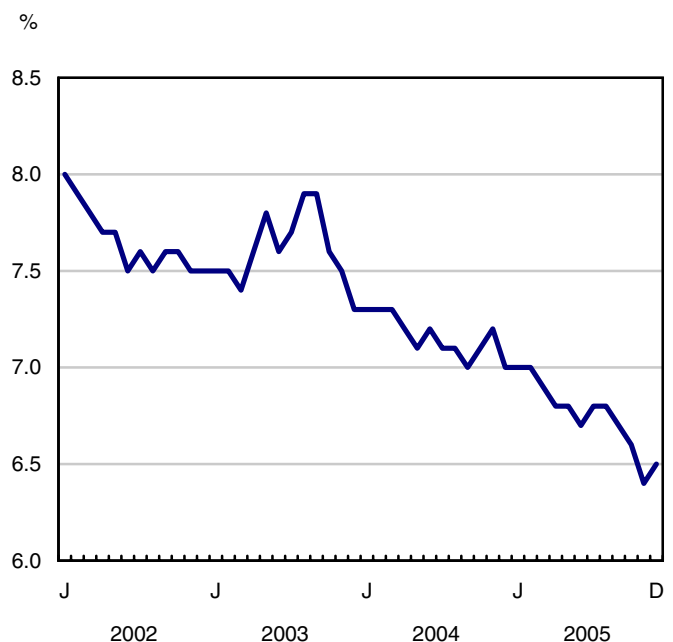
Chart 1

Employment and unemployment rates, Canada, seasonally adjusted

Employment



Unemployment rate



Analysis — December 2005

In December, there was little overall change in employment as an increase of 36,000 full-time jobs was offset by part-time losses of 38,000. The unemployment rate edged up 0.1 percentage points to 6.5% as more people entered the labour market in search of work.

In 2005, employment rose 1.4% (+233,000), similar to the growth rate observed during the previous year. Full-time job growth finished the year up 2.0% while part-time employment remained weak (-1.0%). By the end of the year, total hours worked in the economy were up 1.3%.

Average hourly wages in December were 3.8% higher than 12 months ago while the most recent year-over-year increase in the Consumer Price Index for November was 2.0%. Alberta, with a very tight labour market and an unemployment rate of only 4.1%, saw the largest increase in average hourly wages, up 7.5% from December 2004.

The proportion of the working-age population who were employed (employment rate) in December was 62.7%. Throughout 2005, the employment rate has remained near the record level of 62.8%, as the increase in employment in 2005 kept pace with population growth.

Employment growth in 2005, combined with lower labour force participation, pushed the unemployment rate down 0.5 percentage points over the year. Towards the latter part of 2005, the unemployment rate fell to the lowest level in over 30 years.

Finance, insurance, real estate and leasing up in December

In December, employment increased by 23,000 in finance, insurance, real estate and leasing. Despite this increase, employment in the industry showed little growth over the course of the year.

Employment rose by 21,000 in professional, scientific and technical services, bringing gains for the year to 4.7%. Strength over the year was primarily driven by architectural, engineering and design services.

Despite more people working in public administration in December (+11,000), employment in the industry is similar to the level at the end of 2004.

There was also more employment in December in natural resources (+6,000), mostly in support activities for mining, oil and gas extraction. This brings year-to-date gains in natural resources to 11,000 (+3.7%) with the increase concentrated in Alberta.

In December, there were employment losses in "other services" (-32,000), bringing declines over the year to 4.9%.

Employment also fell in December in health care and social assistance (-24,000). Over 2005, there has been added employment in hospitals but fewer people are working in social assistance as well as in nursing and residential care facilities.

There were job losses in December in transportation and warehousing (-13,000), mostly in trucking. Even with this decline, employment in transportation and warehousing is up 1.5% since the start of 2005.

More education jobs in 2005 and another strong year for construction

Educational services had the strongest employment growth in 2005, up 8.4% (+89,000). This increase was spread across a number of provinces.

The strength in construction employment observed over the past few years continued in 2005 with an increase of 5.7% (+57,000). Added employment in the industry coincides with more non-residential building construction.

In 2005, employment also increased in business, building and other support services (+5.0%), professional, scientific and technical services (+4.7%), and natural resources (+3.7%). There was also growth in Canada's largest industry, retail and wholesale trade (+3.5%). By the end of the year, an additional 88,000 people were working in this industry.

For the third year in a row, the manufacturing sector turned in a lackluster performance with employment down 4.4% (-100,000) in 2005.

Employment growth rate highest among self-employed in 2005

Although little changed in December, self-employment increased by 3.6% (+88,000) compared to the start of 2005. About one-fifth of this increase was associated with construction and real estate.

In December, the number of private sector employees fell by 31,000. However, since the start of the year, employment among this group is up 92,000 (+0.9%).

Public sector employment rose by 26,000 in December, and is up 53,000 (+1.7%) in 2005 with strong increases in educational services followed by transportation.

More adults working full-time in 2005

In December, there were 20,000 more adult men working full-time, however this was partly offset by fewer part-time jobs, leaving overall employment for this group up 13,000. The unemployment rate among men aged 25 and over edged down 0.1 percentage points to 5.4%. In 2005, employment was up 1.8% (+131,000), about the same growth rate as in the previous year. Nearly all of the gains in 2005 were in full-time employment.

Among adult women, employment fell by 25,000 in December, with losses concentrated in part-time work. This leaves employment for adult women in 2005 up by 1.2% (+74,000), similar to the growth rate in 2004. All of the increase in 2005 has been in full-time jobs. Their unemployment rate rose 0.3 percentage points in December to 5.5%.

Although full-time employment among youths increased by 25,000 in December, this was largely offset by a decline in part-time jobs. With more youths in the labour force in search of work, their unemployment rate edged up 0.4 percentage points in December to 11.8%. In 2005, employment among youths rose by 1.1% (+28,000), slightly lower than the previous year. However in the last quarter of 2005, the pace of employment growth for this group picked up.

British Columbia led the nation in 2005 in job growth

Although employment in British Columbia was essentially unchanged in December, there was strong growth in 2005 (+3.8%) with gains in construction (+14.0%), trade (+13.3%), information, culture and recreation (+13.1%) as well as in educational services (+10.9%). The unemployment rate edged up 0.2 percentage points in December to 5.1% but still remained among the lowest in over three decades.

In December, New Brunswick capped the year with an increase of 5,000 in employment, the second consecutive monthly increase. Despite more people working, the unemployment rate edged up 0.1 percentage points to 9.6% as there was a strong increase in labour force participation in December. The recent increase in jobs follows a period of losses in the first half of the year and leaves employment in the province up 0.9% in 2005.

Full-time employment in December rose by 28,000 in Quebec but this was partly offset by a loss of 18,000 part-time jobs. In 2005, employment rose by 1.4% with robust job growth in construction (+9.7%) and educational services (+5.9%); however, there were declines in manufacturing (-5.0%). The unemployment rate edged up 0.2 percentage points in December to 8.2% as more people entered the labour force.

In Ontario, employment fell by 18,000 in December, the result of fewer part-time jobs. The unemployment rate edged up 0.1 percentage points to 6.2%. In 2005, employment grew by 1.2% with gains in a number of industries, most notably educational services (+13.3%), business, building and other support services (+8.8%) and construction (+6.4%) while manufacturing continued to shed jobs (-4.1%).

Despite little change in December, employment in Alberta rose by 1.8% in 2005. Employment jumped in professional, scientific and technical services (+21.5%) in 2005. Employment also increased in educational services (+11.2%)

over the same period. Natural resources continued to strengthen (+5.4%), the result of intense oil and gas activities. The unemployment rate closed the year at 4.1%, unchanged from November.

In Newfoundland and Labrador, employment fell by an estimated 7,000 in December, more than offsetting the previous month's increase. This pushed the unemployment rate up 0.5 percentage points to 15.5%. The decline this month was spread across a number of industries. Employment growth within the province was weak over the course of 2005.

There was little change in both employment and the unemployment rate in the other provinces.

Note to readers: Upcoming LFS revisions

On Wednesday, January 25, 2006, there will be a revision affecting all Labour Force Survey (LFS) estimates from January 1987 to December 2005.

There are three reasons for this revision. First, the revision will enable the use of improved population benchmarks in the LFS estimation process. These improved benchmarks will provide better information on the number of non-permanent residents. Second, there will be changes to the data for the public and private sectors from 1987 to 1999. Currently, the data on the public and private sectors for this period are based on an old definition of the public sector. The revised data will better reflect the current public sector definition, and therefore result in a longer time series for analysis.

Finally, the geographic coding of several small Census Agglomerations (CA) has been updated historically from 1996 urban centre boundaries to 2001 CA boundaries. This affects data from January 1987 to December 2004.

It is important to note that the changes to almost all estimates will be very minor, with the exception of the public sector series and some associated industries from 1987 to 1999. Rates of unemployment, employment and participation are essentially unchanged, as are all key labour market trends.

During the revision, CANSIM data for the LFS will be off-line from January 16 to January 24, 2006. To facilitate data users' access to the revised data, LFS data on CANSIM will be free from January 25 to February 10, 2006.

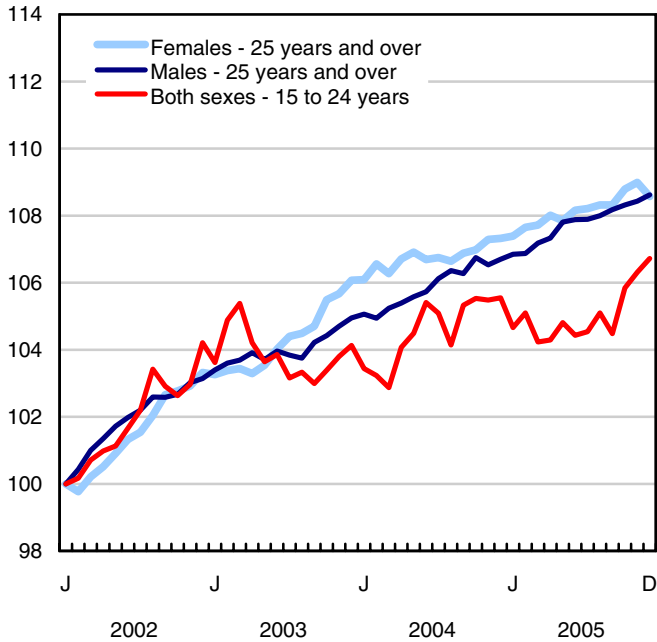
Special tabulations produced through the Client Services unit at the Labour Force Survey will be revised free of charge.

For more information, contact Client Services (613-951-4090; 1-866-873-8788; labour@statcan.ca).

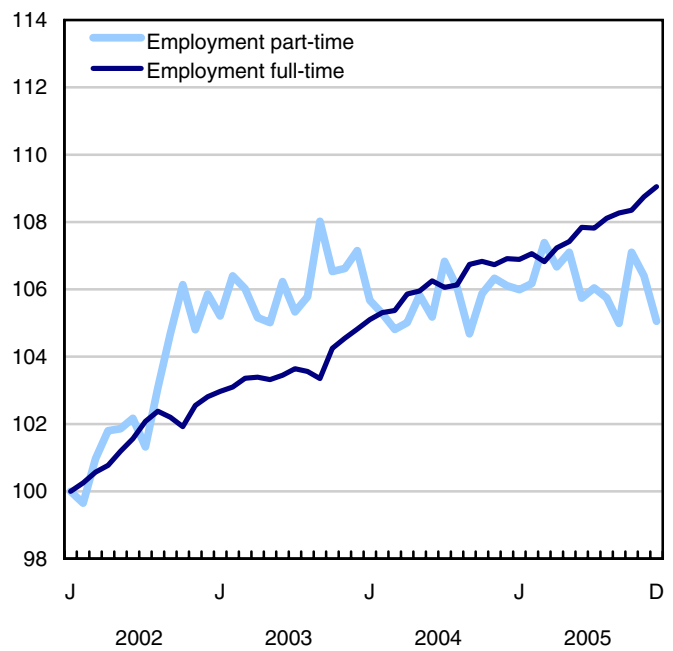
Chart 2

Employment and unemployment indicators, Canada, seasonally adjusted

Employment index, January 2002=100



Employment index, January 2002=100



Employment index, January 2002=100

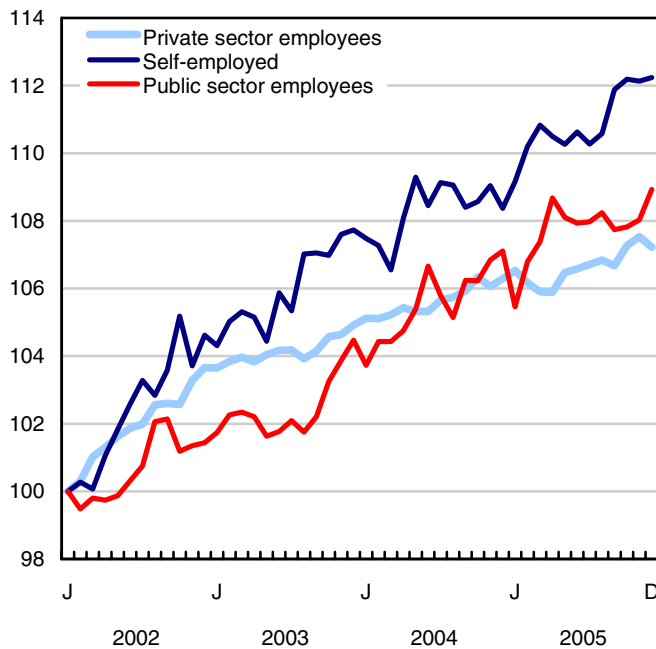
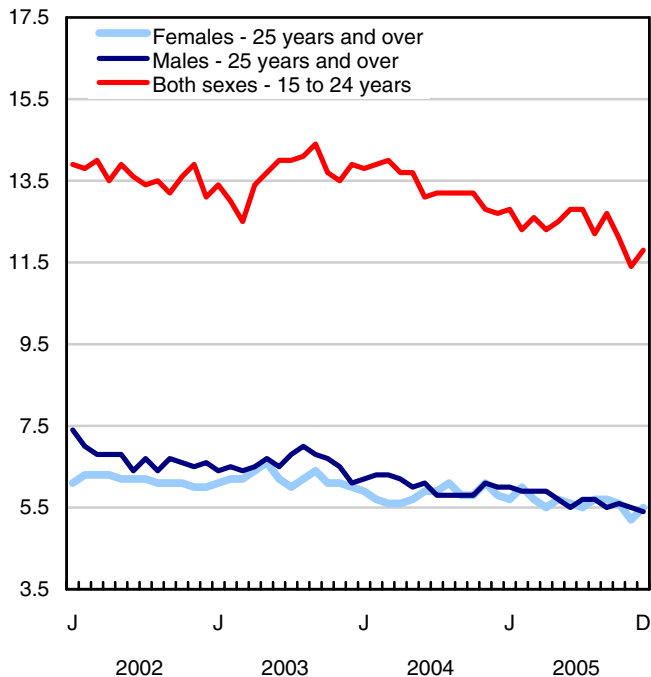


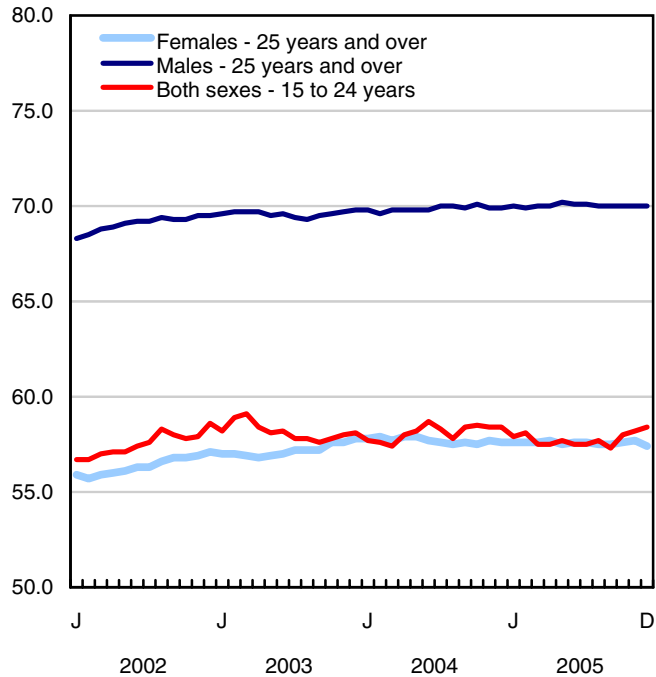
Chart 3

Employment and unemployment indicators, Canada, seasonally adjusted

Unemployment rate (%)



Employment rate (%)



Participation rate (%)

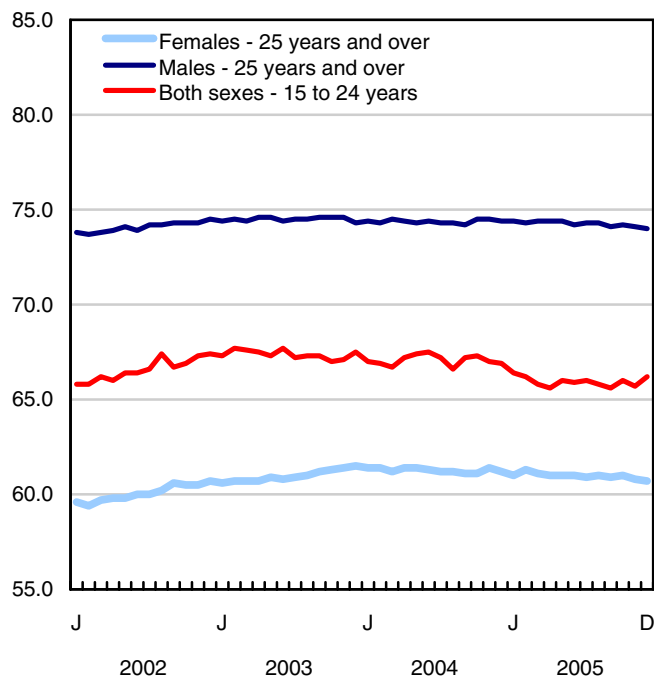


Chart 4

Index of employment by industry, Canada, seasonally adjusted, January, 2002=100

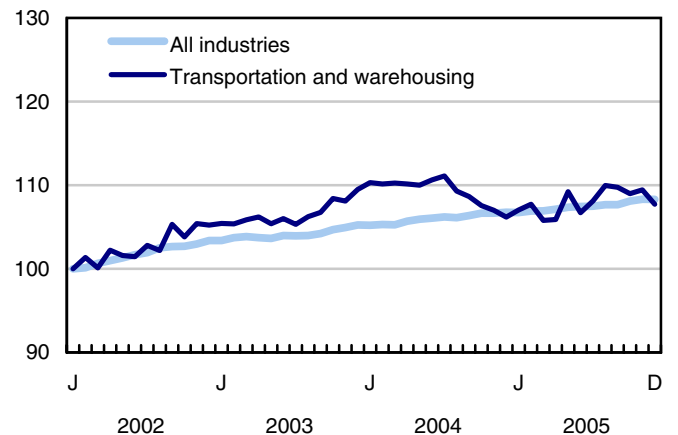
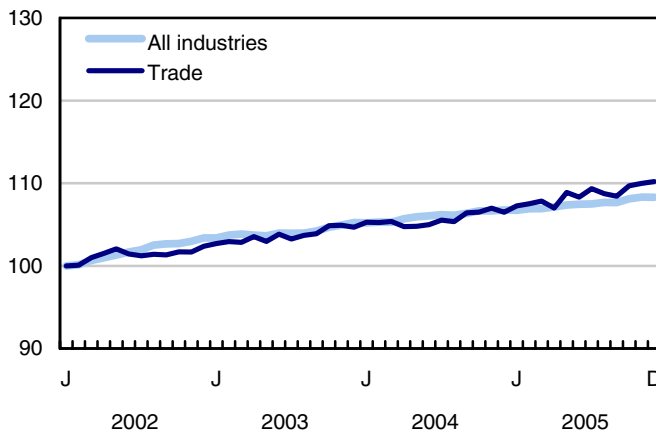
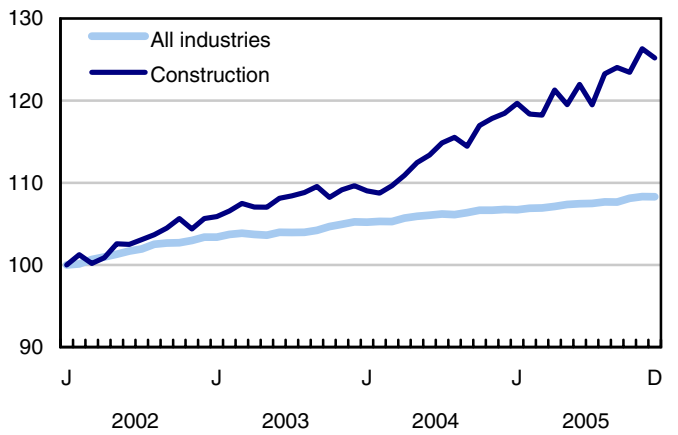
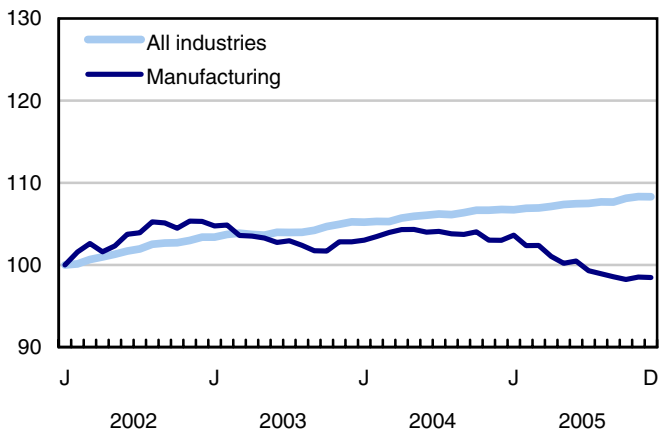
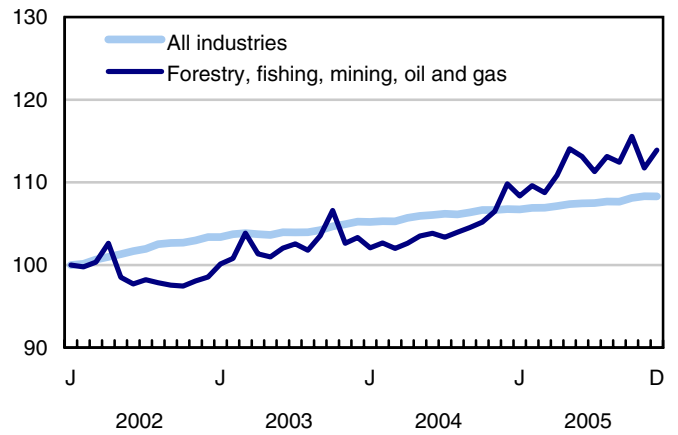
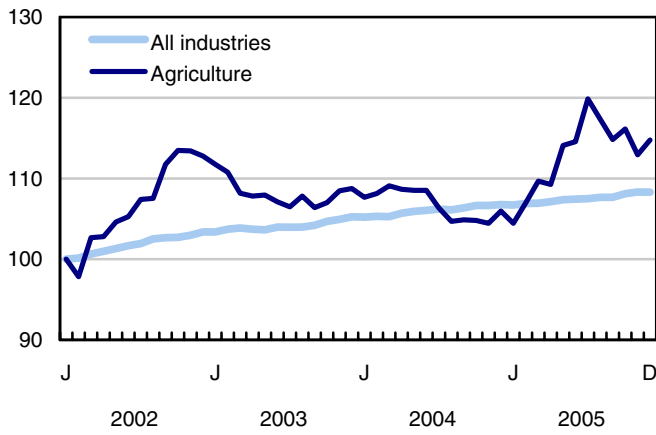


Chart 5

Index of employment by industry, Canada, seasonally adjusted, January 2002 = 100

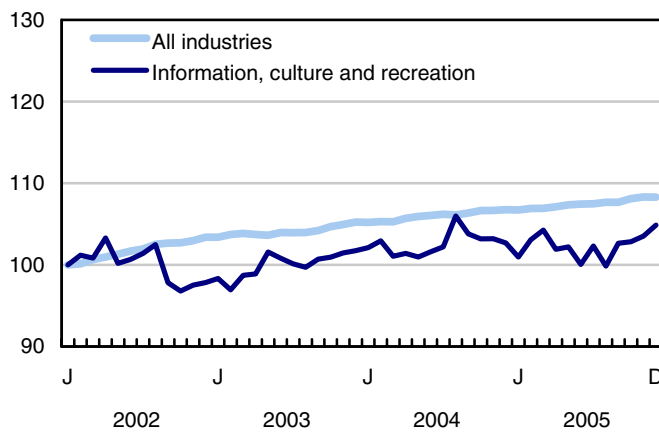
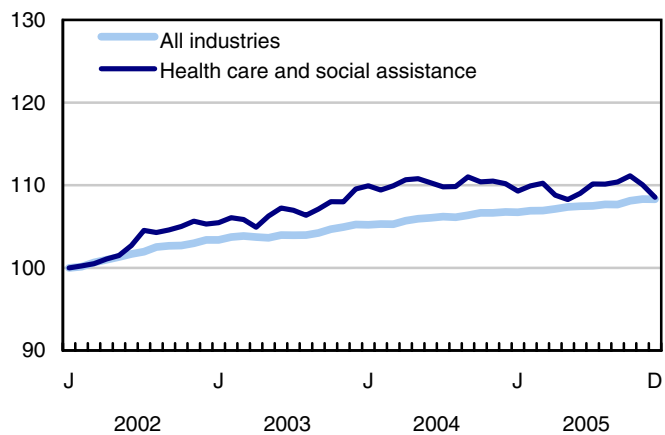
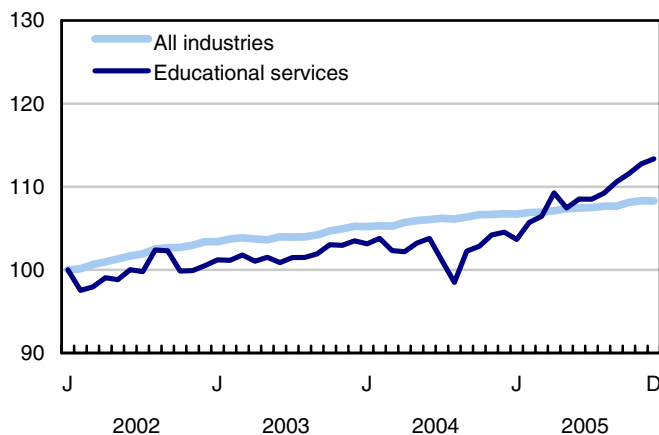
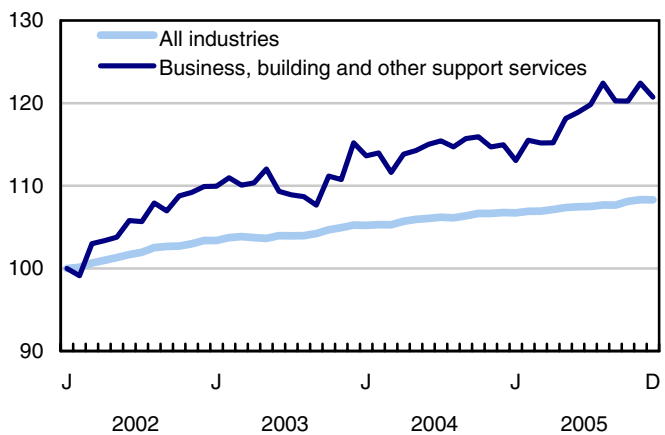
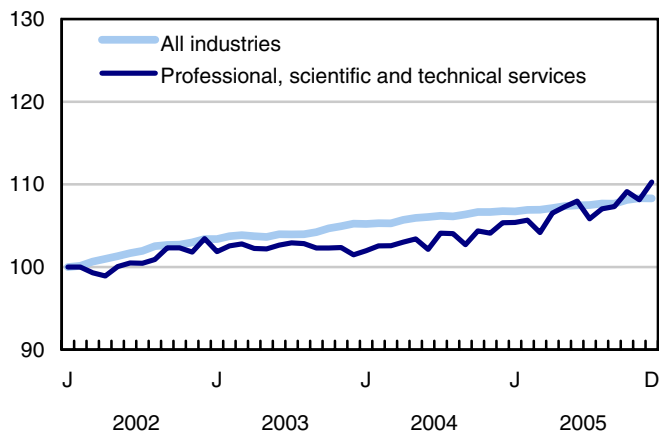
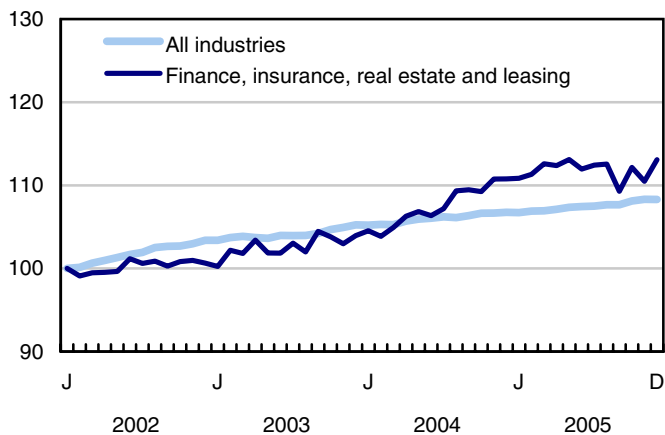


Chart 6

Index of employment by industry, Canada, seasonally adjusted, January 2002 = 100

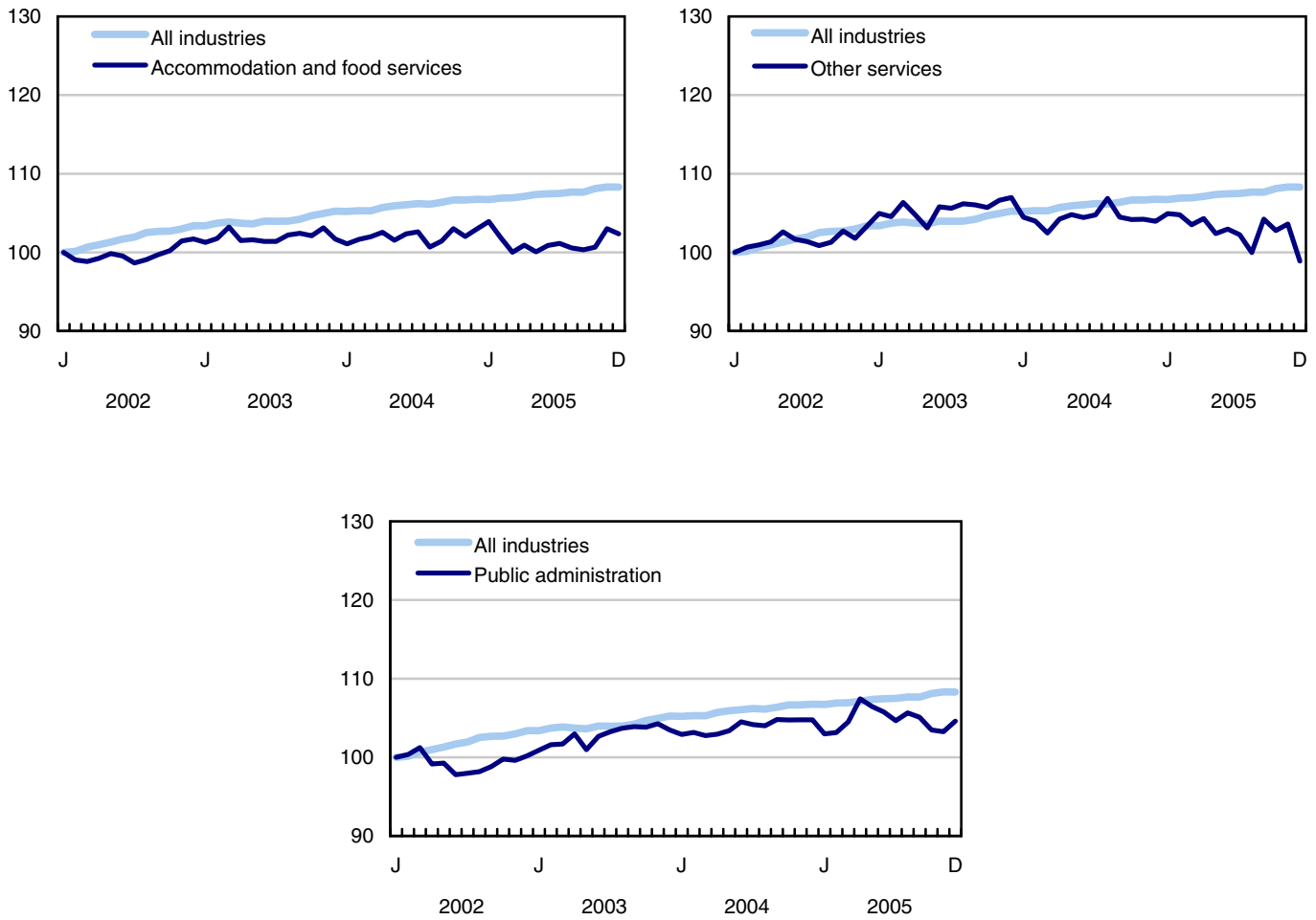
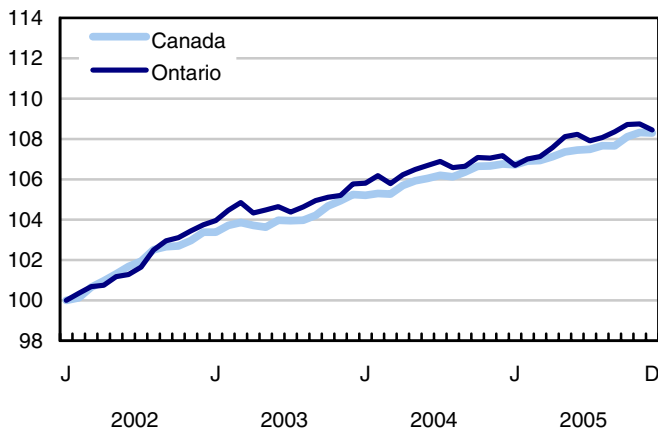
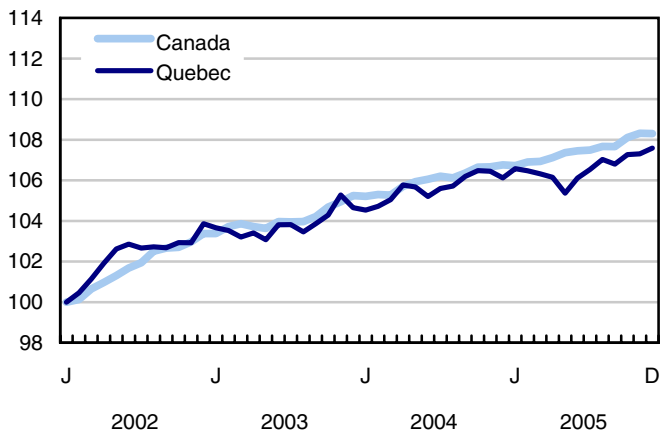
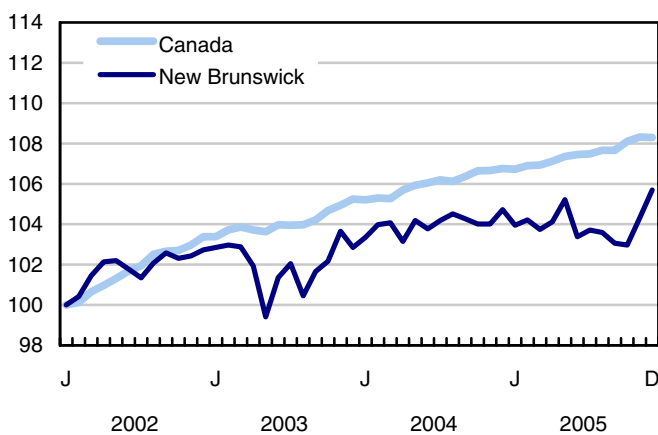
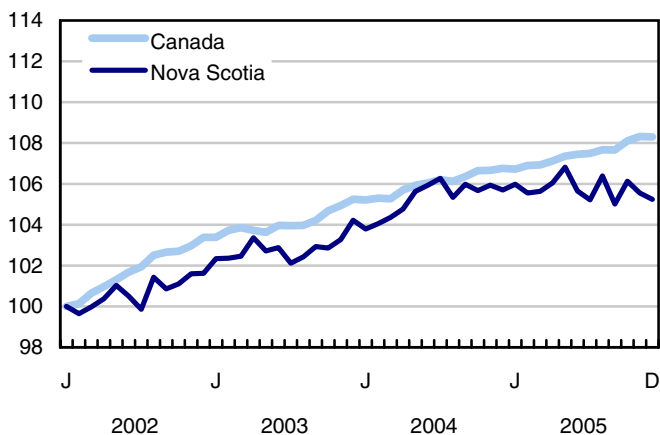
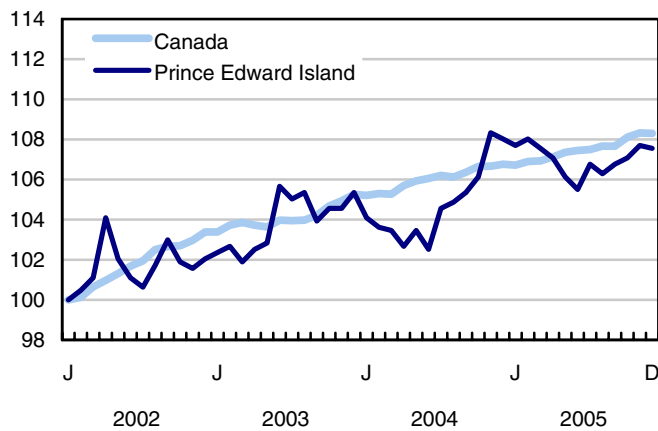
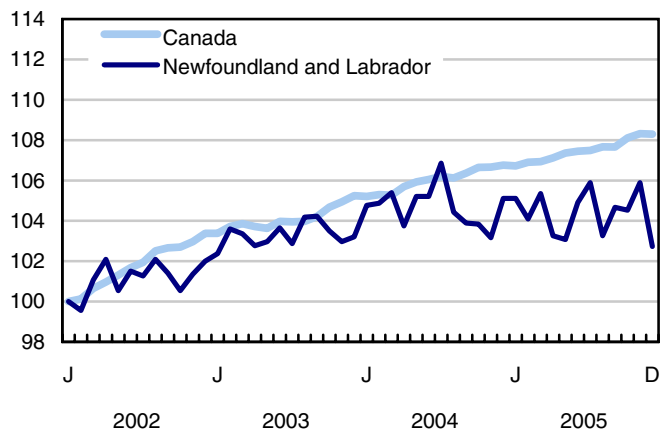


Chart 7

Index of employment by province, seasonally adjusted, January 2002 = 100



Related products

Selected publications from Statistics Canada

71-222-X	The Canadian labour market at a glance
71-526-X	Methodology of the Canadian Labour Force Survey
71-543-G	Guide to the Labour Force Survey
71-544-X	Labour Force Survey products and services.
71-587-X	Aboriginal peoples living off-reserve in Western Canada: estimates from the Labour Force Survey
71F0004X	Labour force historical review
71F0031X	Improvements to the Labour Force Survey (LFS)
71M0001X	Labour Force Survey microdata file
75-001-X	Perspectives on labour and income

Selected CANSIM tables from Statistics Canada

282-0001	Labour force survey estimates (LFS), by sex and detailed age group
282-0002	Labour force survey estimates (LFS), by sex and detailed age group
282-0003	Labour force survey estimates (LFS), by educational attainment, sex and age group
282-0004	Labour force survey estimates (LFS), by educational attainment, sex and age group
282-0005	Labour force survey estimates (LFS), by full- and part-time students during school months, sex and age group
282-0006	Labour force survey estimates (LFS), by students during summer months, sex and age group
282-0007	Labour force survey estimates (LFS), by North American Industry Classification System (NAICS), sex and age group
282-0008	Labour force survey estimates (LFS), by North American Industry Classification System (NAICS), sex and age group
282-0009	Labour force survey estimates (LFS), by National Occupational Classification for Statistics (NOC-S) and sex

282-0010	Labour force survey estimates (LFS), by National Occupational Classification for Statistics (NOC-S) and sex
282-0011	Labour force survey estimates (LFS), employment by class of worker, North American Industry Classification System (NAICS) and sex
282-0012	Labour force survey estimates (LFS), employment by class of worker, North American Industry Classification System (NAICS) and sex
282-0013	Labour force survey estimates (LFS), part-time employment by reason for part-time work, sex and age group
282-0014	Labour force survey estimates (LFS), part-time employment by reason for part-time work, sex and age group
282-0015	Labour force survey estimates (LFS), by usual hours worked, main or all jobs, sex and age group
282-0016	Labour force survey estimates (LFS), by usual hours worked, main or all jobs, sex and age group
282-0017	Labour force survey estimates (LFS), by actual hours worked, main or all jobs, sex and age group
282-0018	Labour force survey estimates (LFS), by actual hours worked, main or all jobs, sex and age group
282-0019	Labour force survey estimates (LFS), by usual hours worked, class of worker, North American Industry Classification System (NAICS) and sex
282-0020	Labour force survey estimates (LFS), by usual hours worked, class of worker, North American Industry Classification System (NAICS) and sex
282-0021	Labour force survey estimates (LFS), by actual hours worked, class of worker, North American Industry Classification System (NAICS) and sex
282-0022	Labour force survey estimates (LFS), by actual hours worked, class of worker, North American Industry Classification System (NAICS) and sex
282-0023	Labour force survey estimates (LFS), by usual hours worked, class of worker, National Occupational Classification for Statistics (NOC-S) and sex
282-0024	Labour force survey estimates (LFS), by usual hours worked, class of worker, National Occupational Classification for Statistics (NOC-S) and sex
282-0025	Labour force survey estimates (LFS), by actual hours worked, class of worker, National Occupational Classification for Statistics (NOC-S) and sex
282-0026	Labour force survey estimates (LFS), by actual hours worked, class of worker, National Occupational Classification for Statistics (NOC-S) and sex
282-0027	Labour force survey estimates (LFS), by total and average usual and actual hours worked, main or all jobs, type of work, sex and age group
282-0028	Labour force survey estimates (LFS), by total and average usual and actual hours worked, main or all jobs, type of work, sex and age group
282-0029	Labour force survey estimates (LFS), average days lost for personal reasons per full-time employee by North American Industry Classification System (NAICS), sex and age group

282-0030	Labour force survey estimates (LFS), average days lost for personal reasons per full-time employee by National Occupational Classification for Statistics (NOC-S), sex and age group
282-0031	Labour force survey estimates (LFS), multiple jobholders by North American Industry Classification System (NAICS), sex and age group
282-0032	Labour force survey estimates (LFS), multiple jobholders by North American Industry Classification System (NAICS), sex and age group
282-0033	Labour force survey estimates (LFS), multiple jobholders by National Occupational Classification for Statistics (NOC-S), sex and age group
282-0034	Labour force survey estimates (LFS), multiple jobholders by National Occupational Classification for Statistics (NOC-S), sex and age group
282-0035	Labour force survey estimates (LFS), multiple jobholders by usual hours worked at main and all jobs
282-0036	Labour force survey estimates (LFS), multiple jobholders by usual hours worked at main and all jobs
282-0037	Labour force survey estimates (LFS), job tenure by type of work, sex and age group
282-0038	Labour force survey estimates (LFS), job tenure by type of work, sex and age group
282-0039	Labour force survey estimates (LFS), job tenure by National Occupational Classification for Statistics (NOC-S) and sex
282-0040	Labour force survey estimates (LFS), job tenure by National Occupational Classification for Statistics (NOC-S) and sex
282-0041	Labour force survey estimates (LFS), job tenure by North American Industry Classification System (NAICS) and sex
282-0042	Labour force survey estimates (LFS), job tenure by North American Industry Classification System (NAICS) and sex
282-0047	Labour force survey estimates (LFS), duration of unemployment by sex and age group
282-0048	Labour force survey estimates (LFS), duration of unemployment by sex and age group
282-0049	Labour force survey estimates (LFS), unemployment by type of work sought and search method, sex and age group
282-0050	Labour force survey estimates (LFS), unemployment by type of work sought and search method, sex and age group
282-0051	Labour force survey estimates (LFS), retirement age by class of worker and sex
282-0052	Labour force survey estimates (LFS), by census metropolitan area, sex and age group, 3-month moving average
282-0053	Labour force survey estimates (LFS), by census metropolitan area, sex and age group
282-0054	Labour force survey estimates (LFS), by economic region and Yukon Territory and Northwest Territories, 3-month moving average
282-0055	Labour force survey estimates (LFS), by economic region and Yukon Territory and Northwest Territories

282-0056	Labour force survey estimates (LFS), employment by census metropolitan area and North American Industry Classification System (NAICS), 3-month moving average
282-0057	Labour force survey estimates (LFS), employment by census metropolitan area and North American Industry Classification System (NAICS)
282-0058	Labour force survey estimates (LFS), employment by census metropolitan area and National Occupational Classification for Statistics (NOC-S), 3-month moving average
282-0059	Labour force survey estimates (LFS), employment by census metropolitan area and National Occupational Classification for Statistics (NOC-S)
282-0060	Labour force survey estimates (LFS), employment by economic region and North American Industry Classification System (NAICS), 3-month moving average
282-0061	Labour force survey estimates (LFS), employment by economic region and North American Industry Classification System (NAICS)
282-0062	Labour force survey estimates (LFS), employment by economic region and National Occupational Classification for Statistics (NOC-S), 3-month moving average
282-0063	Labour force survey estimates (LFS), employment by economic region and National Occupational Classification for Statistics (NOC-S)
282-0064	Labour force survey estimates (LFS), by selected medium-sized cities
282-0069	Labour force survey estimates (LFS), wages of employees by type of work, National Occupational Classification for Statistics (NOC-S), sex and age group
282-0070	Labour force survey estimates (LFS), wages of employees by type of work, National Occupational Classification for Statistics (NOC-S), sex and age group
282-0071	Labour force survey estimates (LFS), wages of employees by type of work, North American Industry Classification System (NAICS), sex and age group
282-0072	Labour force survey estimates (LFS), wages of employees by type of work, North American Industry Classification System (NAICS), sex and age group
282-0073	Labour force survey estimates (LFS), wages of employees by job permanence, union coverage, sex and age group
282-0074	Labour force survey estimates (LFS), wages of employees by job permanence, union coverage, sex and age group
282-0075	Labour force survey estimates (LFS), employees by establishment size, North American Industry Classification System (NAICS), sex and age group
282-0076	Labour force survey estimates (LFS), employees by establishment size, North American Industry Classification System (NAICS), sex and age group
282-0077	Labour force survey estimates (LFS), employees by union coverage, North American Industry Classification System (NAICS), sex and age group
282-0078	Labour force survey estimates (LFS), employees by union coverage, North American Industry Classification System (NAICS), sex and age group
282-0079	Labour force survey estimates (LFS), employees by job permanency, North American Industry Classification System (NAICS), sex and age group

282-0080	Labour force survey estimates (LFS), employees by job permanency, North American Industry Classification System (NAICS), sex and age group
282-0081	Labour force survey estimates (LFS), employees working overtime (weekly) by National Occupational Classification for Statistics (NOC-S), sex and age group
282-0082	Labour force survey estimates (LFS), employees working overtime (weekly) by National Occupational Classification for Statistics (NOC-S), sex and age group
282-0083	Labour force survey estimates (LFS), employees working overtime (weekly) by North American Industry Classification System (NAICS), sex and age group
282-0084	Labour force survey estimates (LFS), employees working overtime (weekly) by North American Industry Classification System (NAICS), sex and age group
282-0085	Labour force survey estimates (LFS), supplementary unemployment rates by sex and age group
282-0086	Labour force survey estimates (LFS), supplementary unemployment rates by sex and age group
282-0087	Labour force survey estimates (LFS), by sex and age group, seasonally adjusted and unadjusted
282-0088	Labour force survey estimates (LFS), employment by North American Industry Classification System (NAICS), seasonally adjusted and unadjusted
282-0089	Labour force survey estimates (LFS), employment by class of worker and sex, seasonally adjusted and unadjusted
282-0090	Labour force survey estimates (LFS), by census metropolitan area, 3-month moving average, seasonally adjusted and unadjusted
282-0091	Labour force survey estimates (LFS), by Montréal, Toronto and Vancouver census metropolitan areas, seasonally adjusted and unadjusted
282-0092	Labour force survey estimates (LFS), actual hours worked by North American Industry Classification System (NAICS), seasonally adjusted
282-0093	Labour force survey estimates (LFS), employment by National Occupational Classification for Statistics (NOC-S), seasonally adjusted
282-0094	Labour force survey estimates (LFS), by North American Industry Classification System (NAICS), Canada, seasonally adjusted
282-0095	Labour force survey estimates (LFS), by full- and part-time students during school months, sex and age group
282-0096	Labour force survey estimates (LFS), by urban and rural areas based on 2001 census boundaries, sex and age group
282-0098	Labour force survey estimates (LFS), employment by urban and rural areas based on 2001 census boundaries, class of worker and North American Industry Classification System (NAICS)

Selected surveys from Statistics Canada

3701 Labour Force Survey

Selected tables of Canadian statistics from Statistics Canada

- *Labour force characteristics*
- *Employment by industry*
- *Selected economic indicators, Canada and United States (monthly and quarterly)*
- *Labour force and participation rates by sex and age group*
- *Labour force, employed and unemployed, numbers and rates, by provinces*
- *Employment by industry and sex*
- *Full-time and part-time employment by sex and age group*
- *Labour force characteristics by age and sex*
- *Distribution of employed people, by industry, by provinces*
- *Labour force characteristics, population 15 years and older, by census metropolitan areas*
- *Labour force characteristics, population 15 years and older, by economic regions, by province*
- *People employed, by educational attainment*
- *Reasons for part-time work by sex and age group*
- *Self-employment, historical summary*
- *Employment by age, sex, type of work, class of worker and provinces (monthly)*
- *Employment by major industry groups, seasonally adjusted, by provinces (monthly)*
- *Actual hours worked per week by industry, seasonally adjusted (monthly)*
- *Average hourly wages of employees by selected characteristics and profession, unadjusted data, by provinces (monthly)*
- *Labour force characteristics, seasonally adjusted, by province (monthly)*
- *Labour force characteristics, unadjusted, by province (monthly)*
- *Labour force characteristics, seasonally adjusted, by census metropolitan areas (3 month moving average)*
- *Labour force characteristics, unadjusted, by census metropolitan areas (3 month moving average)*

- *Labour force characteristics, unadjusted, by economic regions (3 month moving average)*

Statistical tables

Table 1

Labour force characteristics by age and sex, Canada, seasonally adjusted

	November 2005	December 2005	S.E. ¹	Change from			Percent change from		
				last month	last December	twelve months ago	last month	last December	twelve months ago
in thousands (except rates)									
Both sexes, 15 years and over									
Population	25,959.7	25,986.6	...	26.9	389.8	389.8	0.1	1.5	1.5
Labour force	17,403.4	17,425.1	28.1	21.7	145.1	145.1	0.1	0.8	0.8
Employment	16,297.7	16,295.6	28.9	-2.1	232.5	232.5	0.0	1.4	1.4
Employment full-time	13,325.3	13,361.0	35.0	35.7	262.3	262.3	0.3	2.0	2.0
Employment part-time	2,972.4	2,934.6	31.6	-37.8	-29.8	-29.8	-1.3	-1.0	-1.0
Unemployment	1,105.7	1,129.5	24.2	23.8	-87.4	-87.4	2.2	-7.2	-7.2
Participation rate	67.0	67.1	0.1	0.1	-0.4	-0.4
Unemployment rate	6.4	6.5	0.1	0.1	-0.5	-0.5
Employment rate	62.8	62.7	0.1	-0.1	-0.1	-0.1
Part-time rate	18.2	18.0	0.2	-0.2	-0.4	-0.4
Both sexes, 15 to 24 years									
Population	4,299.2	4,302.0	...	2.8	46.3	46.3	0.1	1.1	1.1
Labour force	2,825.3	2,849.6	16.9	24.3	4.2	4.2	0.9	0.1	0.1
Employment	2,502.8	2,512.4	16.5	9.6	27.5	27.5	0.4	1.1	1.1
Employment full-time	1,381.3	1,406.6	18.0	25.3	35.9	35.9	1.8	2.6	2.6
Employment part-time	1,121.5	1,105.8	18.4	-15.7	-8.4	-8.4	-1.4	-0.8	-0.8
Unemployment	322.4	337.2	14.3	14.8	-23.3	-23.3	4.6	-6.5	-6.5
Participation rate	65.7	66.2	0.4	0.5	-0.7	-0.7
Unemployment rate	11.4	11.8	0.5	0.4	-0.9	-0.9
Employment rate	58.2	58.4	0.4	0.2	0.0	0.0
Part-time rate	44.8	44.0	0.7	-0.8	-0.8	-0.8
Men, 25 years and over									
Population	10,575.9	10,587.8	...	11.9	170.8	170.8	0.1	1.6	1.6
Labour force	7,837.1	7,836.4	14.6	-0.7	84.0	84.0	0.0	1.1	1.1
Employment	7,403.7	7,416.7	16.2	13.0	131.4	131.4	0.2	1.8	1.8
Employment full-time	6,915.4	6,935.5	19.7	20.1	102.1	102.1	0.3	1.5	1.5
Employment part-time	488.3	481.2	14.5	-7.1	29.3	29.3	-1.5	6.5	6.5
Unemployment	433.4	419.7	13.9	-13.7	-47.5	-47.5	-3.2	-10.2	-10.2
Participation rate	74.1	74.0	0.1	-0.1	-0.4	-0.4
Unemployment rate	5.5	5.4	0.2	-0.1	-0.6	-0.6
Employment rate	70.0	70.0	0.2	0.0	0.1	0.1
Part-time rate	6.6	6.5	0.2	-0.1	0.3	0.3
Women, 25 years and over									
Population	11,084.5	11,096.8	...	12.3	172.7	172.7	0.1	1.6	1.6
Labour force	6,741.1	6,739.0	15.9	-2.1	56.8	56.8	0.0	0.9	0.9
Employment	6,391.2	6,366.5	16.1	-24.7	73.6	73.6	-0.4	1.2	1.2
Employment full-time	5,028.6	5,018.9	22.7	-9.7	124.3	124.3	-0.2	2.5	2.5
Employment part-time	1,362.6	1,347.6	20.7	-15.0	-50.8	-50.8	-1.1	-3.6	-3.6
Unemployment	349.9	372.5	12.6	22.6	-16.8	-16.8	6.5	-4.3	-4.3
Participation rate	60.8	60.7	0.1	-0.1	-0.5	-0.5
Unemployment rate	5.2	5.5	0.2	0.3	-0.3	-0.3
Employment rate	57.7	57.4	0.1	-0.3	-0.2	-0.2
Part-time rate	21.3	21.2	0.3	-0.2	-1.1	-1.1
Both sexes, 25 to 54 years									
Population	14,172.3	14,179.9	...	7.6	121.4	121.4	0.1	0.9	0.9
Labour force	12,209.3	12,215.1	21.2	5.8	51.2	51.2	0.0	0.4	0.4
Employment	11,547.2	11,540.1	22.8	-7.1	108.2	108.2	-0.1	0.9	0.9
Unemployment	662.1	675.0	18.1	12.9	-57.0	-57.0	1.9	-7.8	-7.8
Participation rate	86.1	86.1	0.2	0.0	-0.4	-0.4
Unemployment rate	5.4	5.5	0.1	0.1	-0.5	-0.5
Employment rate	81.5	81.4	0.2	-0.1	0.1	0.1

1. Average standard error of change in two consecutive months (see "Sampling Errors" in Data Quality for further explanations).

Note: Related CANSIM table 282-0087

Table 2

Employment by class of worker and industry, Canada, seasonally adjusted

	November 2005	December 2005	S.E. ¹	Change from			Percent change from		
				last month	last December	twelve months ago	last month	last December	twelve months ago
in thousands									
Class of worker									
Employees	13,759.3	13,754.5	30.7	-4.8	144.8	144.8	0.0	1.1	1.1
Self-employed ²	2,538.4	2,541.1	18.7	2.7	87.7	87.7	0.1	3.6	3.6
Public/private sector employees									
Public sector employees	3,125.1	3,151.2	18.0	26.1	52.5	52.5	0.8	1.7	1.7
Private sector employees	10,634.2	10,603.3	31.1	-30.9	92.3	92.3	-0.3	0.9	0.9
Industry	16,297.7	16,295.6	28.9	-2.1	232.5	232.5	0.0	1.4	1.4
Goods-producing sector	4,013.4	4,019.5	22.7	6.1	-4.4	-4.4	0.2	-0.1	-0.1
Agriculture	342.9	348.4	6.3	5.5	26.7	26.7	1.6	8.3	8.3
Forestry, fishing, mining, oil and gas	306.5	312.4	5.5	5.9	11.2	11.2	1.9	3.7	3.7
Utilities	120.7	126.0	3.8	5.3	1.4	1.4	4.4	1.1	1.1
Construction	1,061.1	1,051.6	13.2	-9.5	56.6	56.6	-0.9	5.7	5.7
Manufacturing	2,182.3	2,181.1	18.1	-1.2	-100.4	-100.4	-0.1	-4.4	-4.4
Services-producing sector	12,284.3	12,276.1	30.4	-8.2	236.9	236.9	-0.1	2.0	2.0
Trade	2,607.0	2,612.2	18.9	5.2	88.0	88.0	0.2	3.5	3.5
Transportation and warehousing	810.7	798.1	11.0	-12.6	11.5	11.5	-1.6	1.5	1.5
Finance, insurance, real estate and leasing	981.8	1,004.9	12.1	23.1	20.5	20.5	2.4	2.1	2.1
Professional, scientific and technical services	1,057.0	1,078.0	12.7	21.0	48.2	48.2	2.0	4.7	4.7
Business, building and other support services	674.0	664.6	11.7	-9.4	31.8	31.8	-1.4	5.0	5.0
Educational services	1,139.7	1,145.8	12.0	6.1	89.1	89.1	0.5	8.4	8.4
Health care and social assistance	1,734.3	1,710.3	13.8	-24.0	-26.1	-26.1	-1.4	-1.5	-1.5
Information, culture and recreation	739.2	748.9	12.0	9.7	15.6	15.6	1.3	2.1	2.1
Accommodation and food services	1,017.0	1,010.5	13.2	-6.5	-6.2	-6.2	-0.6	-0.6	-0.6
Other services	699.7	667.9	11.1	-31.8	-34.1	-34.1	-4.5	-4.9	-4.9
Public administration	824.0	834.8	9.5	10.8	-1.4	-1.4	1.3	-0.2	-0.2

1. Average standard error of change in two consecutive months (see "Sampling Errors" in Data Quality for further explanations).

2. Includes both incorporated and unincorporated working owners, self-employed persons who do not have a business and persons working in a family business without pay.

Note: Related CANSIM tables 282-0088, 282-0089

Table 3

Labour force characteristics by province, seasonally adjusted

	November 2005	December 2005	S.E. ¹	Change from			Percent change from		
				last month	last December	twelve months ago	last month	last December	twelve months ago
in thousands (except rates)									
Newfoundland and Labrador									
Population	429.3	429.1	...	-0.2	-1.3	-1.3	0.0	-0.3	-0.3
Labour force	255.9	249.8	2.4	-6.1	-2.4	-2.4	-2.4	-1.0	-1.0
Employment	217.6	211.1	2.5	-6.5	-4.9	-4.9	-3.0	-2.3	-2.3
Employment full-time	183.5	176.3	2.7	-7.2	-6.9	-6.9	-3.9	-3.8	-3.8
Employment part-time	34.0	34.8	2.0	0.8	2.1	2.1	2.4	6.4	6.4
Unemployment	38.3	38.7	2.3	0.4	2.5	2.5	1.0	6.9	6.9
Participation rate	59.6	58.2	0.6	-1.4	-0.4	-0.4
Unemployment rate	15.0	15.5	0.8	0.5	1.1	1.1
Employment rate	50.7	49.2	0.6	-1.5	-1.0	-1.0
Prince Edward Island									
Population	111.9	112.0	...	0.1	0.8	0.8	0.1	0.7	0.7
Labour force	76.6	76.8	0.7	0.2	0.1	0.1	0.3	0.1	0.1
Employment	68.5	68.4	0.7	-0.1	-0.3	-0.3	-0.1	-0.4	-0.4
Employment full-time	57.1	57.9	0.8	0.8	0.4	0.4	1.4	0.7	0.7
Employment part-time	11.4	10.5	0.7	-0.9	-0.7	-0.7	-7.9	-6.2	-6.2
Unemployment	8.1	8.4	0.7	0.3	0.4	0.4	3.7	5.0	5.0
Participation rate	68.5	68.6	0.6	0.1	-0.4	-0.4
Unemployment rate	10.6	10.9	0.8	0.3	0.5	0.5
Employment rate	61.2	61.1	0.7	-0.1	-0.7	-0.7
Nova Scotia									
Population	761.7	762.0	...	0.3	3.2	3.2	0.0	0.4	0.4
Labour force	482.4	482.5	3.0	0.1	-4.1	-4.1	0.0	-0.8	-0.8
Employment	442.8	441.5	3.2	-1.3	-1.9	-1.9	-0.3	-0.4	-0.4
Employment full-time	360.2	361.2	3.7	1.0	2.3	2.3	0.3	0.6	0.6
Employment part-time	82.6	80.4	3.3	-2.2	-4.1	-4.1	-2.7	-4.9	-4.9
Unemployment	39.6	40.9	2.7	1.3	-2.3	-2.3	3.3	-5.3	-5.3
Participation rate	63.3	63.3	0.4	0.0	-0.8	-0.8
Unemployment rate	8.2	8.5	0.6	0.3	-0.4	-0.4
Employment rate	58.1	57.9	0.4	-0.2	-0.5	-0.5
New Brunswick									
Population	611.5	611.3	...	-0.2	2.7	2.7	0.0	0.4	0.4
Labour force	388.2	394.1	2.5	5.9	4.7	4.7	1.5	1.2	1.2
Employment	351.5	356.2	2.5	4.7	3.3	3.3	1.3	0.9	0.9
Employment full-time	296.3	295.0	2.8	-1.3	-2.1	-2.1	-0.4	-0.7	-0.7
Employment part-time	55.3	61.2	2.3	5.9	5.4	5.4	10.7	9.7	9.7
Unemployment	36.7	37.8	2.3	1.1	1.3	1.3	3.0	3.6	3.6
Participation rate	63.5	64.5	0.4	1.0	0.5	0.5
Unemployment rate	9.5	9.6	0.6	0.1	0.2	0.2
Employment rate	57.5	58.3	0.4	0.8	0.3	0.3
Quebec									
Population	6,211.1	6,215.9	...	4.8	72.1	72.1	0.1	1.2	1.2
Labour force	4,069.7	4,090.3	15.2	20.6	37.8	37.8	0.5	0.9	0.9
Employment	3,745.1	3,755.3	15.5	10.2	51.4	51.4	0.3	1.4	1.4
Employment full-time	3,047.8	3,076.0	19.2	28.2	29.5	29.5	0.9	1.0	1.0
Employment part-time	697.3	679.3	17.1	-18.0	21.9	21.9	-2.6	3.3	3.3
Unemployment	324.6	335.0	13.6	10.4	-13.6	-13.6	3.2	-3.9	-3.9
Participation rate	65.5	65.8	0.3	0.3	-0.2	-0.2
Unemployment rate	8.0	8.2	0.3	0.2	-0.4	-0.4
Employment rate	60.3	60.4	0.3	0.1	0.1	0.1

See footnotes at the end of the table.

Table 3 – continued

Labour force characteristics by province, seasonally adjusted

	November 2005	December 2005	S.E. ¹	Change from			Percent change from		
				last month	last December	twelve months ago	last month	last December	twelve months ago
in thousands (except rates)									
Ontario									
Population	10,141.9	10,152.8	...	10.9	180.8	180.8	0.1	1.8	1.8
Labour force	6,864.0	6,852.5	18.9	-11.5	33.5	33.5	-0.2	0.5	0.5
Employment	6,447.0	6,429.3	19.1	-17.7	75.8	75.8	-0.3	1.2	1.2
Employment full-time	5,299.6	5,310.0	22.6	10.4	126.8	126.8	0.2	2.4	2.4
Employment part-time	1,147.3	1,119.3	20.6	-28.0	-51.0	-51.0	-2.4	-4.4	-4.4
Unemployment	417.1	423.2	15.8	6.1	-42.3	-42.3	1.5	-9.1	-9.1
Participation rate	67.7	67.5	0.2	-0.2	-0.9	-0.9
Unemployment rate	6.1	6.2	0.2	0.1	-0.6	-0.6
Employment rate	63.6	63.3	0.2	-0.3	-0.4	-0.4
Manitoba									
Population	890.1	889.9	...	-0.2	4.9	4.9	0.0	0.6	0.6
Labour force	608.6	610.3	2.8	1.7	-0.8	-0.8	0.3	-0.1	-0.1
Employment	583.4	584.4	2.9	1.0	4.1	4.1	0.2	0.7	0.7
Employment full-time	469.5	464.2	3.8	-5.3	-6.6	-6.6	-1.1	-1.4	-1.4
Employment part-time	113.9	120.2	3.4	6.3	10.7	10.7	5.5	9.8	9.8
Unemployment	25.3	25.8	2.3	0.5	-5.0	-5.0	2.0	-16.2	-16.2
Participation rate	68.4	68.6	0.3	0.2	-0.5	-0.5
Unemployment rate	4.2	4.2	0.4	0.0	-0.8	-0.8
Employment rate	65.5	65.7	0.3	0.2	0.1	0.1
Saskatchewan									
Population	748.6	748.3	...	-0.3	1.4	1.4	0.0	0.2	0.2
Labour force	507.0	506.2	2.5	-0.8	-7.8	-7.8	-0.2	-1.5	-1.5
Employment	480.3	479.5	2.5	-0.8	-7.4	-7.4	-0.2	-1.5	-1.5
Employment full-time	387.4	389.3	3.1	1.9	-2.1	-2.1	0.5	-0.5	-0.5
Employment part-time	93.0	90.2	2.9	-2.8	-5.3	-5.3	-3.0	-5.5	-5.5
Unemployment	26.6	26.7	1.9	0.1	-0.4	-0.4	0.4	-1.5	-1.5
Participation rate	67.7	67.6	0.3	-0.1	-1.2	-1.2
Unemployment rate	5.2	5.3	0.4	0.1	0.0	0.0
Employment rate	64.2	64.1	0.3	-0.1	-1.1	-1.1
Alberta									
Population	2,580.5	2,587.2	...	6.7	61.2	61.2	0.3	2.4	2.4
Labour force	1,872.0	1,877.4	7.2	5.4	27.1	27.1	0.3	1.5	1.5
Employment	1,795.1	1,800.7	8.1	5.6	32.6	32.6	0.3	1.8	1.8
Employment full-time	1,499.6	1,499.0	10.3	-0.6	53.5	53.5	0.0	3.7	3.7
Employment part-time	295.4	301.6	9.2	6.2	-21.0	-21.0	2.1	-6.5	-6.5
Unemployment	76.9	76.7	6.2	-0.2	-5.6	-5.6	-0.3	-6.8	-6.8
Participation rate	72.5	72.6	0.3	0.1	-0.7	-0.7
Unemployment rate	4.1	4.1	0.3	0.0	-0.3	-0.3
Employment rate	69.6	69.6	0.3	0.0	-0.4	-0.4
British Columbia									
Population	3,473.2	3,478.3	...	5.1	64.2	64.2	0.1	1.9	1.9
Labour force	2,278.9	2,285.2	10.9	6.3	57.0	57.0	0.3	2.6	2.6
Employment	2,166.5	2,169.2	11.4	2.7	79.7	79.7	0.1	3.8	3.8
Employment full-time	1,724.3	1,731.3	13.8	7.0	67.4	67.4	0.4	4.1	4.1
Employment part-time	442.3	437.8	12.5	-4.5	12.2	12.2	-1.0	2.9	2.9
Unemployment	112.4	116.1	9.0	3.7	-22.7	-22.7	3.3	-16.4	-16.4
Participation rate	65.6	65.7	0.3	0.1	0.4	0.4
Unemployment rate	4.9	5.1	0.4	0.2	-1.1	-1.1
Employment rate	62.4	62.4	0.3	0.0	1.2	1.2

1. Average standard error of change in two consecutive months (see "Sampling Errors" in Data Quality for further explanations).

Note: Related CANSIM table 282-0087

Table 4-1

Selected labour force characteristics (seasonally adjusted) — Newfoundland and Labrador

	November 2005	December 2005	S.E. ¹	Change from			Percent change from		
				last month	last December	twelve months ago	last month	last December	twelve months ago
in thousands (except rates)									
Both sexes, 15 years and over									
Population	429.3	429.1	...	-0.2	-1.3	-1.3	0.0	-0.3	-0.3
Labour force	255.9	249.8	2.4	-6.1	-2.4	-2.4	-2.4	-1.0	-1.0
Employment	217.6	211.1	2.5	-6.5	-4.9	-4.9	-3.0	-2.3	-2.3
Employment full-time	183.5	176.3	2.7	-7.2	-6.9	-6.9	-3.9	-3.8	-3.8
Unemployment	38.3	38.7	2.3	0.4	2.5	2.5	1.0	6.9	6.9
Participation rate	59.6	58.2	0.6	-1.4	-0.4	-0.4
Unemployment rate	15.0	15.5	0.8	0.5	1.1	1.1
Employment rate	50.7	49.2	0.6	-1.5	-1.0	-1.0
Part-time rate	15.6	16.5	0.9	0.9	1.3	1.3
Both sexes, 15 to 24 years									
Population	68.0	68.0	...	0.0	-2.6	-2.6	0.0	-3.7	-3.7
Labour force	38.7	36.4	1.4	-2.3	-2.1	-2.1	-5.9	-5.5	-5.5
Employment	30.4	28.3	1.3	-2.1	-2.9	-2.9	-6.9	-9.3	-9.3
Unemployment	8.3	8.1	1.1	-0.2	0.8	0.8	-2.4	11.0	11.0
Participation rate	56.9	53.5	1.9	-3.4	-1.0	-1.0
Unemployment rate	21.4	22.3	2.6	0.9	3.3	3.3
Employment rate	44.7	41.6	1.8	-3.1	-2.6	-2.6
Part-time rate	46.4	45.9	3.6	-0.4	4.6	4.6
Men, 25 years and over									
Population	175.1	175.0	...	-0.1	0.5	0.5	-0.1	0.3	0.3
Labour force	113.9	111.5	1.4	-2.4	-3.8	-3.8	-2.1	-3.3	-3.3
Employment	96.0	93.8	1.5	-2.2	-4.9	-4.9	-2.3	-5.0	-5.0
Unemployment	17.9	17.7	1.5	-0.2	1.1	1.1	-1.1	6.6	6.6
Participation rate	65.0	63.7	0.8	-1.3	-2.4	-2.4
Unemployment rate	15.7	15.9	1.2	0.2	1.5	1.5
Employment rate	54.8	53.6	0.8	-1.2	-3.0	-3.0
Part-time rate	4.7	4.2	0.8	-0.5	-1.0	-1.0
Women, 25 years and over									
Population	186.2	186.2	...	0.0	0.9	0.9	0.0	0.5	0.5
Labour force	103.2	101.9	1.2	-1.3	3.5	3.5	-1.3	3.6	3.6
Employment	91.2	88.9	1.3	-2.3	2.9	2.9	-2.5	3.4	3.4
Unemployment	12.1	13.0	1.2	0.9	0.6	0.6	7.4	4.8	4.8
Participation rate	55.4	54.7	0.7	-0.7	1.6	1.6
Unemployment rate	11.7	12.8	1.1	1.1	0.2	0.2
Employment rate	49.0	47.7	0.7	-1.3	1.3	1.3
Part-time rate	17.0	20.1	1.4	3.1	2.9	2.9
Industry									
Population	217.6	211.1	2.5	-6.5	-4.9	-4.9	-3.0	-2.3	-2.3
Goods-producing sector									
Agriculture	51.2	49.4	1.8	-1.8	1.0	1.0	-3.5	2.1	2.1
Forestry, fishing, mining, oil and gas	2.5	2.1	0.3	-0.4	0.5	0.5	-16.0	31.2	31.2
Utilities	15.0	15.1	1.0	0.1	-0.4	-0.4	0.7	-2.6	-2.6
Construction	2.6	2.6	0.2	0.0	0.1	0.1	0.0	4.0	4.0
Manufacturing	11.9	11.8	0.9	-0.1	-1.7	-1.7	-0.8	-12.6	-12.6
Services-producing sector									
Trade	19.3	17.8	1.1	-1.5	2.5	2.5	-7.8	16.3	16.3
Transportation and warehousing	166.3	161.7	2.2	-4.6	-5.8	-5.8	-2.8	-3.5	-3.5
Finance, insurance, real estate and leasing	38.8	38.1	1.2	-0.7	-1.0	-1.0	-1.8	-2.6	-2.6
Professional, scientific and technical services	11.1	11.7	0.7	0.6	0.5	0.5	5.4	4.5	4.5
Business, building and other support services	7.9	7.3	0.6	-0.6	-1.3	-1.3	-7.6	-15.1	-15.1
Educational services	7.3	7.4	0.6	0.1	1.0	1.0	1.4	15.6	15.6
Health care and social assistance	6.2	6.3	0.8	0.1	-1.2	-1.2	1.6	-16.0	-16.0
Information, culture and recreation	17.3	16.1	0.9	-1.2	-0.9	-0.9	-6.9	-5.3	-5.3
Accommodation and food services	28.9	28.7	0.9	-0.2	-1.3	-1.3	-0.7	-4.3	-4.3
Other services	7.8	6.8	0.6	-1.0	-3.0	-3.0	-12.8	-30.6	-30.6
Public administration	13.6	13.4	0.9	-0.2	0.3	0.3	-1.5	2.3	2.3
	12.2	10.5	0.8	-1.7	0.1	0.1	-13.9	1.0	1.0
	15.1	15.4	0.8	0.3	0.9	0.9	2.0	6.2	6.2

1. Average standard error of change in two consecutive months (see "Sampling Errors" in Data Quality for further explanations).

Note: Related CANSIM tables 282-0087, 282-0088

Table 4-2

Selected labour force characteristics (seasonally adjusted) — Prince Edward Island

	November 2005	December 2005	S.E. ¹	Change from			Percent change from		
				last month	last December	twelve months ago	last month	last December	twelve months ago
in thousands (except rates)									
Both sexes, 15 years and over									
Population	111.9	112.0	...	0.1	0.8	0.8	0.1	0.7	0.7
Labour force	76.6	76.8	0.7	0.2	0.1	0.1	0.3	0.1	0.1
Employment	68.5	68.4	0.7	-0.1	-0.3	-0.3	-0.1	-0.4	-0.4
Employment full-time	57.1	57.9	0.8	0.8	0.4	0.4	1.4	0.7	0.7
Unemployment	8.1	8.4	0.7	0.3	0.4	0.4	3.7	5.0	5.0
Participation rate	68.5	68.6	0.6	0.1	-0.4	-0.4
Unemployment rate	10.6	10.9	0.8	0.3	0.5	0.5
Employment rate	61.2	61.1	0.7	-0.1	-0.7	-0.7
Part-time rate	16.6	15.4	1.0	-1.3	-1.0	-1.0
Both sexes, 15 to 24 years									
Population	19.7	19.8	...	0.1	0.3	0.3	0.5	1.5	1.5
Labour force	13.4	13.4	0.4	0.0	-0.1	-0.1	0.0	-0.7	-0.7
Employment	11.6	11.4	0.4	-0.2	0.1	0.1	-1.7	0.9	0.9
Unemployment	1.8	2.0	0.4	0.2	-0.2	-0.2	11.1	-9.1	-9.1
Participation rate	68.0	67.7	2.1	-0.3	-1.5	-1.5
Unemployment rate	13.4	14.9	2.6	1.5	-1.4	-1.4
Employment rate	58.9	57.6	2.1	-1.3	-0.3	-0.3
Part-time rate	43.1	35.1	3.5	-8.0	-6.5	-6.5
Men, 25 years and over									
Population	44.2	44.2	...	0.0	0.4	0.4	0.0	0.9	0.9
Labour force	32.7	32.8	0.4	0.1	0.6	0.6	0.3	1.9	1.9
Employment	29.0	28.9	0.4	-0.1	-0.3	-0.3	-0.3	-1.0	-1.0
Unemployment	3.7	4.0	0.4	0.3	1.1	1.1	8.1	37.9	37.9
Participation rate	74.0	74.2	0.8	0.2	0.7	0.7
Unemployment rate	11.3	12.2	1.2	0.9	3.2	3.2
Employment rate	65.6	65.4	1.0	-0.2	-1.3	-1.3
Part-time rate	6.6	5.9	1.0	-0.7	-0.3	-0.3
Women, 25 years and over									
Population	47.9	48.0	...	0.1	0.1	0.1	0.2	0.2	0.2
Labour force	30.5	30.6	0.3	0.1	-0.4	-0.4	0.3	-1.3	-1.3
Employment	28.0	28.2	0.4	0.2	0.0	0.0	0.7	0.0	0.0
Unemployment	2.5	2.5	0.4	0.0	-0.3	-0.3	0.0	-10.7	-10.7
Participation rate	63.7	63.8	0.7	0.1	-0.9	-0.9
Unemployment rate	8.2	8.2	1.2	0.0	-0.8	-0.8
Employment rate	58.5	58.8	0.9	0.3	-0.1	-0.1
Part-time rate	15.7	16.7	1.6	1.0	-0.4	-0.4
Industry	68.5	68.4	0.7	-0.1	-0.3	-0.3	-0.1	-0.4	-0.4
Goods-producing sector	17.5	18.5	0.5	1.0	0.9	0.9	5.7	5.1	5.1
Agriculture	3.6	3.8	0.3	0.2	0.4	0.4	5.6	11.8	11.8
Forestry, fishing, mining, oil and gas	2.0	2.1	0.3	0.1	-0.9	-0.9	5.0	-30.0	-30.0
Utilities	0.3	0.4	0.0	0.1	0.0	0.0	33.3	0.0	0.0
Construction	4.9	5.2	0.3	0.3	1.2	1.2	6.1	30.0	30.0
Manufacturing	6.7	7.0	0.3	0.3	0.3	0.3	4.5	4.5	4.5
Services-producing sector	51.0	49.9	0.7	-1.1	-1.2	-1.2	-2.2	-2.3	-2.3
Trade	9.9	9.2	0.4	-0.7	-0.8	-0.8	-7.1	-8.0	-8.0
Transportation and warehousing	2.2	2.1	0.2	-0.1	-0.1	-0.1	-4.5	-4.5	-4.5
Finance, insurance, real estate and leasing	2.0	2.0	0.2	0.0	-0.2	-0.2	0.0	-9.1	-9.1
Professional, scientific and technical services	2.8	2.6	0.2	-0.2	0.0	0.0	-7.1	0.0	0.0
Business, building and other support services	2.8	2.8	0.2	0.0	0.4	0.4	0.0	16.7	16.7
Educational services	4.8	4.7	0.2	-0.1	-0.3	-0.3	-2.1	-6.0	-6.0
Health care and social assistance	7.9	7.8	0.3	-0.1	-0.3	-0.3	-1.3	-3.7	-3.7
Information, culture and recreation	3.0	2.9	0.2	-0.1	0.2	0.2	-3.3	7.4	7.4
Accommodation and food services	5.8	6.1	0.3	0.3	0.8	0.8	5.2	15.1	15.1
Other services	3.4	3.4	0.2	0.0	0.5	0.5	0.0	17.2	17.2
Public administration	6.3	6.2	0.3	-0.1	-1.5	-1.5	-1.6	-19.5	-19.5

1. Average standard error of change in two consecutive months (see "Sampling Errors" in Data Quality for further explanations).

Note: Related CANSIM tables 282-0087, 282-0088

Table 4-3

Selected labour force characteristics (seasonally adjusted) — Nova Scotia

	November 2005	December 2005	S.E. ¹	Change from			Percent change from		
				last month	last December	twelve months ago	last month	last December	twelve months ago
in thousands (except rates)									
Both sexes, 15 years and over									
Population	761.7	762.0	...	0.3	3.2	3.2	0.0	0.4	0.4
Labour force	482.4	482.5	3.0	0.1	-4.1	-4.1	0.0	-0.8	-0.8
Employment	442.8	441.5	3.2	-1.3	-1.9	-1.9	-0.3	-0.4	-0.4
Employment full-time	360.2	361.2	3.7	1.0	2.3	2.3	0.3	0.6	0.6
Unemployment	39.6	40.9	2.7	1.3	-2.3	-2.3	3.3	-5.3	-5.3
Participation rate	63.3	63.3	0.4	0.0	-0.8	-0.8
Unemployment rate	8.2	8.5	0.6	0.3	-0.4	-0.4
Employment rate	58.1	57.9	0.4	-0.2	-0.5	-0.5
Part-time rate	18.7	18.2	0.7	-0.4	-0.8	-0.8
Both sexes, 15 to 24 years									
Population	123.6	123.6	...	0.0	0.6	0.6	0.0	0.5	0.5
Labour force	80.4	81.1	1.7	0.7	-3.4	-3.4	0.9	-4.0	-4.0
Employment	70.0	70.4	1.7	0.4	-0.8	-0.8	0.6	-1.1	-1.1
Unemployment	10.4	10.8	1.6	0.4	-2.5	-2.5	3.8	-18.8	-18.8
Participation rate	65.0	65.6	1.4	0.6	-3.1	-3.1
Unemployment rate	12.9	13.3	1.8	0.4	-2.4	-2.4
Employment rate	56.6	57.0	1.4	0.4	-0.9	-0.9
Part-time rate	43.9	44.2	2.5	0.3	1.2	1.2
Men, 25 years and over									
Population	304.9	305.0	...	0.1	0.8	0.8	0.0	0.3	0.3
Labour force	209.0	209.5	1.6	0.5	-3.1	-3.1	0.2	-1.5	-1.5
Employment	191.6	193.0	1.8	1.4	-3.3	-3.3	0.7	-1.7	-1.7
Unemployment	17.4	16.5	1.6	-0.9	0.2	0.2	-5.2	1.2	1.2
Participation rate	68.5	68.7	0.5	0.2	-1.2	-1.2
Unemployment rate	8.3	7.9	0.8	-0.4	0.2	0.2
Employment rate	62.8	63.3	0.6	0.5	-1.2	-1.2
Part-time rate	6.6	6.2	0.8	-0.4	-0.5	-0.5
Women, 25 years and over									
Population	333.2	333.4	...	0.2	1.7	1.7	0.1	0.5	0.5
Labour force	193.1	191.9	1.6	-1.2	2.4	2.4	-0.6	1.3	1.3
Employment	181.2	178.2	1.7	-3.0	2.3	2.3	-1.7	1.3	1.3
Unemployment	11.9	13.7	1.4	1.8	0.1	0.1	15.1	0.7	0.7
Participation rate	58.0	57.6	0.5	-0.4	0.5	0.5
Unemployment rate	6.2	7.1	0.7	0.9	-0.1	-0.1
Employment rate	54.4	53.4	0.5	-1.0	0.4	0.4
Part-time rate	21.7	20.9	1.2	-0.8	-2.3	-2.3
Industry	442.8	441.5	3.2	-1.3	-1.9	-1.9	-0.3	-0.4	-0.4
Goods-producing sector	90.1	88.8	2.2	-1.3	-4.9	-4.9	-1.4	-5.2	-5.2
Agriculture	5.1	4.9	0.6	-0.2	-0.1	-0.1	-3.9	-2.0	-2.0
Forestry, fishing, mining, oil and gas	15.2	15.1	1.0	-0.1	1.2	1.2	-0.7	8.6	8.6
Utilities	1.8	1.3	0.3	-0.5	-1.2	-1.2	-27.8	-48.0	-48.0
Construction	27.7	27.5	1.3	-0.2	-2.1	-2.1	-0.7	-7.1	-7.1
Manufacturing	40.2	40.0	1.4	-0.2	-2.7	-2.7	-0.5	-6.3	-6.3
Services-producing sector	352.7	352.7	3.0	0.0	3.0	3.0	0.0	0.9	0.9
Trade	78.0	76.6	1.8	-1.4	2.0	2.0	-1.8	2.7	2.7
Transportation and warehousing	20.3	20.9	1.1	0.6	-0.7	-0.7	3.0	-3.2	-3.2
Finance, insurance, real estate and leasing	21.2	22.6	1.1	1.4	0.1	0.1	6.6	0.4	0.4
Professional, scientific and technical services	21.3	19.9	1.1	-1.4	-0.5	-0.5	-6.6	-2.5	-2.5
Business, building and other support services	26.1	23.5	1.3	-2.6	0.8	0.8	-10.0	3.5	3.5
Educational services	37.4	35.7	1.3	-1.7	-2.4	-2.4	-4.5	-6.3	-6.3
Health care and social assistance	56.6	57.8	1.3	1.2	5.1	5.1	2.1	9.7	9.7
Information, culture and recreation	14.1	14.7	1.2	0.6	-2.2	-2.2	4.3	-13.0	-13.0
Accommodation and food services	29.5	30.5	1.5	1.0	-1.6	-1.6	3.4	-5.0	-5.0
Other services	20.7	21.2	1.1	0.5	-0.5	-0.5	2.4	-2.3	-2.3
Public administration	27.6	29.2	1.0	1.6	2.9	2.9	5.8	11.0	11.0

1. Average standard error of change in two consecutive months (see "Sampling Errors" in Data Quality for further explanations).

Note: Related CANSIM tables 282-0087, 282-0088

Table 4-4

Selected labour force characteristics (seasonally adjusted) — New Brunswick

	November 2005	December 2005	S.E. ¹	Change from			Percent change from		
				last month	last December	twelve months ago	last month	last December	twelve months ago
in thousands (except rates)									
Both sexes, 15 years and over									
Population	611.5	611.3	...	-0.2	2.7	2.7	0.0	0.4	0.4
Labour force	388.2	394.1	2.5	5.9	4.7	4.7	1.5	1.2	1.2
Employment	351.5	356.2	2.5	4.7	3.3	3.3	1.3	0.9	0.9
Employment full-time	296.3	295.0	2.8	-1.3	-2.1	-2.1	-0.4	-0.7	-0.7
Unemployment	36.7	37.8	2.3	1.1	1.3	1.3	3.0	3.6	3.6
Participation rate	63.5	64.5	0.4	1.0	0.5	0.5
Unemployment rate	9.5	9.6	0.6	0.1	0.2	0.2
Employment rate	57.5	58.3	0.4	0.8	0.3	0.3
Part-time rate	15.7	17.2	0.6	1.4	1.4	1.4
Both sexes, 15 to 24 years									
Population	96.2	96.1	...	-0.1	-1.0	-1.0	-0.1	-1.0	-1.0
Labour force	62.8	63.8	1.4	1.0	0.1	0.1	1.6	0.2	0.2
Employment	54.3	54.7	1.4	0.4	-0.1	-0.1	0.7	-0.2	-0.2
Unemployment	8.5	9.1	1.2	0.6	0.2	0.2	7.1	2.2	2.2
Participation rate	65.3	66.4	1.4	1.1	0.8	0.8
Unemployment rate	13.5	14.3	1.8	0.8	0.3	0.3
Employment rate	56.4	56.9	1.4	0.5	0.5	0.5
Part-time rate	38.7	41.0	2.3	2.3	1.2	1.2
Men, 25 years and over									
Population	248.9	248.9	...	0.0	1.8	1.8	0.0	0.7	0.7
Labour force	169.9	172.5	1.4	2.6	0.9	0.9	1.5	0.5	0.5
Employment	152.6	156.1	1.5	3.5	1.2	1.2	2.3	0.8	0.8
Unemployment	17.3	16.4	1.5	-0.9	-0.4	-0.4	-5.2	-2.4	-2.4
Participation rate	68.3	69.3	0.6	1.0	-0.1	-0.1
Unemployment rate	10.2	9.5	0.8	-0.7	-0.3	-0.3
Employment rate	61.3	62.7	0.6	1.4	0.0	0.0
Part-time rate	5.0	6.1	0.7	1.0	2.0	2.0
Women, 25 years and over									
Population	266.4	266.3	...	-0.1	1.8	1.8	0.0	0.7	0.7
Labour force	155.6	157.7	1.3	2.1	3.6	3.6	1.3	2.3	2.3
Employment	144.6	145.5	1.4	0.9	2.3	2.3	0.6	1.6	1.6
Unemployment	10.9	12.3	1.2	1.4	1.5	1.5	12.8	13.9	13.9
Participation rate	58.4	59.2	0.5	0.8	0.9	0.9
Unemployment rate	7.0	7.8	0.8	0.8	0.8	0.8
Employment rate	54.3	54.6	0.5	0.3	0.5	0.5
Part-time rate	18.4	20.2	1.1	1.8	0.9	0.9
Industry									
	351.5	356.2	2.5	4.7	3.4	3.4	1.3	1.0	1.0
Goods-producing sector									
Agriculture	6.8	8.2	0.6	1.4	2.7	2.7	20.6	49.1	49.1
Forestry, fishing, mining, oil and gas	10.5	10.8	0.8	0.3	-1.5	-1.5	2.9	-12.2	-12.2
Utilities	3.2	3.4	0.3	0.2	-0.2	-0.2	6.2	-5.6	-5.6
Construction	19.0	19.1	1.1	0.1	0.0	0.0	0.5	0.0	0.0
Manufacturing	35.1	36.8	1.3	1.7	-4.5	-4.5	4.8	-10.9	-10.9
Services-producing sector									
	276.9	278.0	2.4	1.1	7.0	7.0	0.4	2.6	2.6
Trade	58.3	58.2	1.4	-0.1	2.9	2.9	-0.2	5.2	5.2
Transportation and warehousing	21.0	20.0	0.9	-1.0	-1.4	-1.4	-4.8	-6.5	-6.5
Finance, insurance, real estate and leasing	13.3	14.5	0.7	1.2	1.2	1.2	9.0	9.0	9.0
Professional, scientific and technical services	13.5	13.9	0.8	0.4	-2.4	-2.4	3.0	-14.7	-14.7
Business, building and other support services	20.6	21.3	1.1	0.7	0.0	0.0	3.4	0.0	0.0
Educational services	28.0	27.0	0.9	-1.0	0.6	0.6	-3.6	2.3	2.3
Health care and social assistance	46.1	46.2	1.1	0.1	-0.9	-0.9	0.2	-1.9	-1.9
Information, culture and recreation	13.3	12.6	0.7	-0.7	0.9	0.9	-5.3	7.7	7.7
Accommodation and food services	24.2	24.9	1.1	0.7	3.3	3.3	2.9	15.3	15.3
Other services	16.0	16.9	0.9	0.9	-0.6	-0.6	5.6	-3.4	-3.4
Public administration	22.6	22.4	0.8	-0.2	3.4	3.4	-0.9	17.9	17.9

1. Average standard error of change in two consecutive months (see "Sampling Errors" in Data Quality for further explanations).

Note: Related CANSIM tables 282-0087, 282-0088

Table 4-5

Selected labour force characteristics (seasonally adjusted) — Quebec

	November 2005	December 2005	S.E. ¹	Change from			Percent change from		
				last month	last December	twelve months ago	last month	last December	twelve months ago
in thousands (except rates)									
Both sexes, 15 years and over									
Population	6,211.1	6,215.9	...	4.8	72.1	72.1	0.1	1.2	1.2
Labour force	4,069.7	4,090.3	15.2	20.6	37.8	37.8	0.5	0.9	0.9
Employment	3,745.1	3,755.3	15.5	10.2	51.4	51.4	0.3	1.4	1.4
Employment full-time	3,047.8	3,076.0	19.2	28.2	29.5	29.5	0.9	1.0	1.0
Unemployment	324.6	335.0	13.6	10.4	-13.6	-13.6	3.2	-3.9	-3.9
Participation rate	65.5	65.8	0.3	0.3	-0.2	-0.2
Unemployment rate	8.0	8.2	0.3	0.2	-0.4	-0.4
Employment rate	60.3	60.4	0.3	0.1	0.1	0.1
Part-time rate	18.6	18.1	0.5	-0.5	0.3	0.3
Both sexes, 15 to 24 years									
Population	950.2	950.1	...	-0.1	-0.9	-0.9	0.0	-0.1	-0.1
Labour force	625.6	635.0	8.7	9.4	-8.3	-8.3	1.5	-1.3	-1.3
Employment	545.9	550.7	8.7	4.8	-4.5	-4.5	0.9	-0.8	-0.8
Unemployment	79.7	84.4	7.6	4.7	-3.7	-3.7	5.9	-4.2	-4.2
Participation rate	65.8	66.8	0.9	1.0	-0.8	-0.8
Unemployment rate	12.7	13.3	1.1	0.6	-0.4	-0.4
Employment rate	57.5	58.0	0.9	0.5	-0.4	-0.4
Part-time rate	48.0	45.1	1.6	-2.9	-0.6	-0.6
Men, 25 years and over									
Population	2,567.9	2,570.3	...	2.4	38.2	38.2	0.1	1.5	1.5
Labour force	1,856.0	1,856.8	8.1	0.8	15.6	15.6	0.0	0.8	0.8
Employment	1,723.7	1,728.7	8.8	5.0	41.3	41.3	0.3	2.4	2.4
Unemployment	132.3	128.2	8.1	-4.1	-25.6	-25.6	-3.1	-16.6	-16.6
Participation rate	72.3	72.2	0.3	-0.1	-0.5	-0.5
Unemployment rate	7.1	6.9	0.4	-0.2	-1.5	-1.5
Employment rate	67.1	67.3	0.4	0.2	0.7	0.7
Part-time rate	7.2	7.3	0.5	0.1	1.0	1.0
Women, 25 years and over									
Population	2,693.0	2,695.4	...	2.4	34.7	34.7	0.1	1.3	1.3
Labour force	1,588.1	1,598.4	8.6	10.3	30.4	30.4	0.6	1.9	1.9
Employment	1,475.5	1,476.0	8.8	0.5	14.7	14.7	0.0	1.0	1.0
Unemployment	112.7	122.4	7.3	9.7	15.7	15.7	8.6	14.7	14.7
Participation rate	59.0	59.3	0.3	0.3	0.4	0.4
Unemployment rate	7.1	7.7	0.5	0.6	0.9	0.9
Employment rate	54.8	54.8	0.3	0.0	-0.1	-0.1
Part-time rate	21.1	20.6	0.7	-0.5	0.3	0.3
Industry									
	3,745.1	3,755.3	15.5	10.2	51.4	51.4	0.3	1.4	1.4
Goods-producing sector									
Agriculture	62.3	63.2	2.8	0.9	18.2	18.2	1.4	40.4	40.4
Forestry, fishing, mining, oil and gas	40.7	41.6	2.2	0.9	3.5	3.5	2.2	9.2	9.2
Utilities	30.9	31.8	2.2	0.9	1.3	1.3	2.9	4.3	4.3
Construction	189.4	185.8	6.3	-3.6	16.5	16.5	-1.9	9.7	9.7
Manufacturing	600.4	603.8	10.4	3.4	-31.5	-31.5	0.6	-5.0	-5.0
Services-producing sector									
	2,821.5	2,829.1	16.4	7.6	43.4	43.4	0.3	1.6	1.6
Trade	638.7	647.3	10.7	8.6	25.1	25.1	1.3	4.0	4.0
Transportation and warehousing	161.4	157.6	5.8	-3.8	-4.2	-4.2	-2.4	-2.6	-2.6
Finance, insurance, real estate and leasing	197.7	210.7	6.3	13.0	-0.3	-0.3	6.6	-0.1	-0.1
Professional, scientific and technical services	225.6	236.9	6.8	11.3	11.9	11.9	5.0	5.3	5.3
Business, building and other support services	134.0	129.6	5.7	-4.4	7.3	7.3	-3.3	6.0	6.0
Educational services	259.4	256.6	6.5	-2.8	14.3	14.3	-1.1	5.9	5.9
Health care and social assistance	440.4	443.3	8.2	2.9	4.3	4.3	0.7	1.0	1.0
Information, culture and recreation	163.4	162.1	6.6	-1.3	-11.0	-11.0	-0.8	-6.4	-6.4
Accommodation and food services	215.6	212.5	6.9	-3.1	4.8	4.8	-1.4	2.3	2.3
Other services	170.3	156.3	6.2	-14.0	-5.6	-5.6	-8.2	-3.5	-3.5
Public administration	214.9	216.2	5.6	1.3	-3.1	-3.1	0.6	-1.4	-1.4

1. Average standard error of change in two consecutive months (see "Sampling Errors" in Data Quality for further explanations).

Note: Related CANSIM tables 282-0087, 282-0088

Table 4-6

Selected labour force characteristics (seasonally adjusted) — Ontario

	November 2005	December 2005	S.E. ¹	Change from			Percent change from		
				last month	last December	twelve months ago	last month	last December	twelve months ago
in thousands (except rates)									
Both sexes, 15 years and over									
Population	10,141.9	10,152.8	...	10.9	180.8	180.8	0.1	1.8	1.8
Labour force	6,864.0	6,852.5	18.9	-11.5	33.5	33.5	-0.2	0.5	0.5
Employment	6,447.0	6,429.3	19.1	-17.7	75.8	75.8	-0.3	1.2	1.2
Employment full-time	5,299.6	5,310.0	22.6	10.4	126.8	126.8	0.2	2.4	2.4
Unemployment	417.1	423.2	15.8	6.1	-42.3	-42.3	1.5	-9.1	-9.1
Participation rate	67.7	67.5	0.2	-0.2	-0.9	-0.9
Unemployment rate	6.1	6.2	0.2	0.1	-0.6	-0.6
Employment rate	63.6	63.3	0.2	-0.3	-0.4	-0.4
Part-time rate	17.8	17.4	0.3	-0.4	-1.0	-1.0
Both sexes, 15 to 24 years									
Population	1,692.9	1,694.3	...	1.4	31.3	31.3	0.1	1.9	1.9
Labour force	1,091.1	1,098.3	11.6	7.2	5.8	5.8	0.7	0.5	0.5
Employment	945.9	950.6	10.8	4.7	11.9	11.9	0.5	1.3	1.3
Unemployment	145.2	147.7	9.7	2.5	-6.1	-6.1	1.7	-4.0	-4.0
Participation rate	64.5	64.8	0.7	0.3	-0.9	-0.9
Unemployment rate	13.3	13.4	0.8	0.1	-0.7	-0.7
Employment rate	55.9	56.1	0.7	0.2	-0.3	-0.3
Part-time rate	48.0	47.1	1.1	-0.9	-1.5	-1.5
Men, 25 years and over									
Population	4,113.3	4,117.6	...	4.3	73.3	73.3	0.1	1.8	1.8
Labour force	3,095.1	3,085.7	9.5	-9.4	34.6	34.6	-0.3	1.1	1.1
Employment	2,942.9	2,938.7	10.7	-4.2	43.6	43.6	-0.1	1.5	1.5
Unemployment	152.3	147.0	8.8	-5.3	-9.0	-9.0	-3.5	-5.8	-5.8
Participation rate	75.2	74.9	0.2	-0.3	-0.5	-0.5
Unemployment rate	4.9	4.8	0.3	-0.1	-0.3	-0.3
Employment rate	71.5	71.4	0.3	-0.1	-0.2	-0.2
Part-time rate	6.6	6.3	0.3	-0.3	0.5	0.5
Women, 25 years and over									
Population	4,335.7	4,340.9	...	5.2	76.2	76.2	0.1	1.8	1.8
Labour force	2,677.8	2,668.4	10.6	-9.4	-7.0	-7.0	-0.4	-0.3	-0.3
Employment	2,558.2	2,540.0	10.5	-18.2	20.3	20.3	-0.7	0.8	0.8
Unemployment	119.6	128.5	8.1	8.9	-27.2	-27.2	7.4	-17.5	-17.5
Participation rate	61.8	61.5	0.2	-0.3	-1.2	-1.2
Unemployment rate	4.5	4.8	0.3	0.3	-1.0	-1.0
Employment rate	59.0	58.5	0.2	-0.5	-0.6	-0.6
Part-time rate	19.6	19.2	0.5	-0.4	-2.5	-2.5
Industry	6,447.0	6,429.3	19.1	-17.7	75.8	75.8	-0.3	1.2	1.2
Goods-producing sector	1,645.2	1,648.5	15.3	3.3	0.7	0.7	0.2	0.0	0.0
Agriculture	98.5	100.5	3.5	2.0	19.9	19.9	2.0	24.7	24.7
Forestry, fishing, mining, oil and gas	36.1	36.6	2.0	0.5	2.2	2.2	1.4	6.4	6.4
Utilities	48.4	52.2	2.5	3.8	-0.6	-0.6	7.9	-1.1	-1.1
Construction	412.2	406.6	8.8	-5.6	24.6	24.6	-1.4	6.4	6.4
Manufacturing	1,049.9	1,052.6	12.7	2.7	-45.4	-45.4	0.3	-4.1	-4.1
Services-producing sector	4,801.8	4,780.8	20.5	-21.0	75.1	75.1	-0.4	1.6	1.6
Trade	992.6	981.3	12.4	-11.3	3.7	3.7	-1.1	0.4	0.4
Transportation and warehousing	297.2	298.1	7.4	0.9	-1.9	-1.9	0.3	-0.6	-0.6
Finance, insurance, real estate and leasing	452.1	458.3	8.6	6.2	16.2	16.2	1.4	3.7	3.7
Professional, scientific and technical services	441.0	447.0	8.6	6.0	6.2	6.2	1.4	1.4	1.4
Business, building and other support services	301.3	298.8	8.3	-2.5	24.1	24.1	-0.8	8.8	8.8
Educational services	449.9	452.7	7.8	2.8	53.2	53.2	0.6	13.3	13.3
Health care and social assistance	625.4	610.4	8.6	-15.0	-28.5	-28.5	-2.4	-4.5	-4.5
Information, culture and recreation	292.8	312.1	8.0	19.3	16.0	16.0	6.6	5.4	5.4
Accommodation and food services	372.9	365.7	8.5	-7.2	6.8	6.8	-1.9	1.9	1.9
Other services	259.0	238.0	7.2	-21.0	-19.9	-19.9	-8.1	-7.7	-7.7
Public administration	317.6	318.4	6.2	0.8	-0.7	-0.7	0.3	-0.2	-0.2

1. Average standard error of change in two consecutive months (see "Sampling Errors" in Data Quality for further explanations).

Note: Related CANSIM tables 282-0087, 282-0088

Table 4-7

Selected labour force characteristics (seasonally adjusted) — Manitoba

	November 2005	December 2005	S.E. ¹	Change from			Percent change from		
				last month	last December	twelve months ago	last month	last December	twelve months ago
in thousands (except rates)									
Both sexes, 15 years and over									
Population	890.1	889.9	...	-0.2	4.9	4.9	0.0	0.6	0.6
Labour force	608.6	610.3	2.8	1.7	-0.8	-0.8	0.3	-0.1	-0.1
Employment	583.4	584.4	2.9	1.0	4.1	4.1	0.2	0.7	0.7
Employment full-time	469.5	464.2	3.8	-5.3	-6.6	-6.6	-1.1	-1.4	-1.4
Unemployment	25.3	25.8	2.3	0.5	-5.0	-5.0	2.0	-16.2	-16.2
Participation rate	68.4	68.6	0.3	0.2	-0.5	-0.5
Unemployment rate	4.2	4.2	0.4	0.0	-0.8	-0.8
Employment rate	65.5	65.7	0.3	0.2	0.1	0.1
Part-time rate	19.5	20.6	0.6	1.0	1.7	1.7
Both sexes, 15 to 24 years									
Population	155.5	155.5	...	0.0	0.7	0.7	0.0	0.5	0.5
Labour force	108.6	110.1	1.7	1.5	1.9	1.9	1.4	1.8	1.8
Employment	100.4	101.0	1.7	0.6	4.1	4.1	0.6	4.2	4.2
Unemployment	8.2	9.1	1.4	0.9	-2.2	-2.2	11.0	-19.5	-19.5
Participation rate	69.8	70.8	1.1	1.0	0.9	0.9
Unemployment rate	7.6	8.3	1.3	0.7	-2.1	-2.1
Employment rate	64.6	65.0	1.1	0.4	2.4	2.4
Part-time rate	45.6	46.2	1.9	0.6	3.7	3.7
Men, 25 years and over									
Population	358.0	358.0	...	0.0	2.3	2.3	0.0	0.6	0.6
Labour force	269.5	269.7	1.4	0.2	-0.5	-0.5	0.1	-0.2	-0.2
Employment	260.2	260.2	1.6	0.0	0.8	0.8	0.0	0.3	0.3
Unemployment	9.3	9.5	1.3	0.2	-1.3	-1.3	2.2	-12.0	-12.0
Participation rate	75.3	75.3	0.4	0.0	-0.7	-0.7
Unemployment rate	3.5	3.5	0.5	0.0	-0.5	-0.5
Employment rate	72.7	72.7	0.4	0.0	-0.2	-0.2
Part-time rate	5.8	6.7	0.6	1.0	0.6	0.6
Women, 25 years and over									
Population	376.5	376.4	...	-0.1	1.8	1.8	0.0	0.5	0.5
Labour force	230.5	230.4	1.6	-0.1	-2.4	-2.4	0.0	-1.0	-1.0
Employment	222.8	223.2	1.6	0.4	-0.8	-0.8	0.2	-0.4	-0.4
Unemployment	7.7	7.2	1.2	-0.5	-1.5	-1.5	-6.5	-17.2	-17.2
Participation rate	61.2	61.2	0.4	0.0	-0.9	-0.9
Unemployment rate	3.3	3.1	0.5	-0.2	-0.6	-0.6
Employment rate	59.2	59.3	0.4	0.1	-0.5	-0.5
Part-time rate	23.8	25.1	1.0	1.3	1.7	1.7
Industry	583.4	584.4	2.9	1.0	4.1	4.1	0.2	0.7	0.7
Goods-producing sector	139.3	141.4	2.3	2.1	1.9	1.9	1.5	1.4	1.4
Agriculture	30.7	32.5	1.3	1.8	0.2	0.2	5.9	0.6	0.6
Forestry, fishing, mining, oil and gas	6.7	6.4	0.5	-0.3	0.5	0.5	-4.5	8.5	8.5
Utilities	6.0	6.5	0.4	0.5	0.0	0.0	8.3	0.0	0.0
Construction	30.7	29.5	1.3	-1.2	1.1	1.1	-3.9	3.9	3.9
Manufacturing	65.3	66.6	1.6	1.3	0.2	0.2	2.0	0.3	0.3
Services-producing sector	444.1	443.0	3.1	-1.1	2.2	2.2	-0.2	0.5	0.5
Trade	83.5	86.4	1.8	2.9	1.0	1.0	3.5	1.2	1.2
Transportation and warehousing	34.8	35.3	1.2	0.5	1.3	1.3	1.4	3.8	3.8
Finance, insurance, real estate and leasing	35.0	35.9	1.1	0.9	3.4	3.4	2.6	10.5	10.5
Professional, scientific and technical services	23.9	22.1	1.0	-1.8	-4.8	-4.8	-7.5	-17.8	-17.8
Business, building and other support services	18.2	18.5	1.2	0.3	-2.4	-2.4	1.6	-11.5	-11.5
Educational services	45.2	44.9	1.4	-0.3	1.8	1.8	-0.7	4.2	4.2
Health care and social assistance	76.3	74.7	1.5	-1.6	-4.2	-4.2	-2.1	-5.3	-5.3
Information, culture and recreation	24.0	23.1	1.2	-0.9	-0.9	-0.9	-3.8	-3.8	-3.8
Accommodation and food services	42.3	40.6	1.4	-1.7	7.8	7.8	-4.0	23.8	23.8
Other services	27.3	25.9	1.2	-1.4	0.9	0.9	-5.1	3.6	3.6
Public administration	33.5	35.7	1.1	2.2	-1.7	-1.7	6.6	-4.5	-4.5

1. Average standard error of change in two consecutive months (see "Sampling Errors" in Data Quality for further explanations).

Note: Related CANSIM tables 282-0087, 282-0088

Table 4-8

Selected labour force characteristics (seasonally adjusted) — Saskatchewan

	November 2005	December 2005	S.E. ¹	Change from			Percent change from		
				last month	last December	twelve months ago	last month	last December	twelve months ago
in thousands (except rates)									
Both sexes, 15 years and over									
Population	748.6	748.3	...	-0.3	1.4	1.4	0.0	0.2	0.2
Labour force	507.0	506.2	2.5	-0.8	-7.8	-7.8	-0.2	-1.5	-1.5
Employment	480.3	479.5	2.5	-0.8	-7.4	-7.4	-0.2	-1.5	-1.5
Employment full-time	387.4	389.3	3.1	1.9	-2.1	-2.1	0.5	-0.5	-0.5
Unemployment	26.6	26.7	1.9	0.1	-0.4	-0.4	0.4	-1.5	-1.5
Participation rate	67.7	67.6	0.3	-0.1	-1.2	-1.2
Unemployment rate	5.2	5.3	0.4	0.1	0.0	0.0
Employment rate	64.2	64.1	0.3	-0.1	-1.1	-1.1
Part-time rate	19.4	18.8	0.6	-0.6	-0.8	-0.8
Both sexes, 15 to 24 years									
Population	138.3	138.3	...	0.0	-0.8	-0.8	0.0	-0.6	-0.6
Labour force	93.7	94.2	1.6	0.5	-2.8	-2.8	0.5	-2.9	-2.9
Employment	83.3	82.6	1.5	-0.7	-5.3	-5.3	-0.8	-6.0	-6.0
Unemployment	10.4	11.5	1.2	1.1	2.4	2.4	10.6	26.4	26.4
Participation rate	67.8	68.1	1.1	0.3	-1.6	-1.6
Unemployment rate	11.1	12.2	1.3	1.1	2.8	2.8
Employment rate	60.2	59.7	1.1	-0.5	-3.5	-3.5
Part-time rate	40.8	40.4	1.8	-0.4	1.0	1.0
Men, 25 years and over									
Population	297.4	297.3	...	-0.1	0.8	0.8	0.0	0.3	0.3
Labour force	223.1	221.2	1.3	-1.9	-3.0	-3.0	-0.9	-1.3	-1.3
Employment	213.7	213.0	1.4	-0.7	0.0	0.0	-0.3	0.0	0.0
Unemployment	9.4	8.2	1.1	-1.2	-3.0	-3.0	-12.8	-26.8	-26.8
Participation rate	75.0	74.4	0.4	-0.6	-1.2	-1.2
Unemployment rate	4.2	3.7	0.5	-0.5	-1.3	-1.3
Employment rate	71.9	71.6	0.5	-0.3	-0.2	-0.2
Part-time rate	6.7	6.3	0.6	-0.4	0.1	0.1
Women, 25 years and over									
Population	312.9	312.7	...	-0.2	1.3	1.3	-0.1	0.4	0.4
Labour force	190.2	190.9	1.4	0.7	-1.9	-1.9	0.4	-1.0	-1.0
Employment	183.3	183.8	1.4	0.5	-2.2	-2.2	0.3	-1.2	-1.2
Unemployment	6.9	7.0	0.9	0.1	0.3	0.3	1.4	4.5	4.5
Participation rate	60.8	61.0	0.4	0.2	-0.9	-0.9
Unemployment rate	3.6	3.7	0.5	0.1	0.2	0.2
Employment rate	58.6	58.8	0.4	0.2	-0.9	-0.9
Part-time rate	24.3	23.6	1.0	-0.8	-1.9	-1.9
Industry	480.3	479.5	2.5	-0.8	-7.4	-7.4	-0.2	-1.5	-1.5
Goods-producing sector	128.9	127.7	2.0	-1.2	1.1	1.1	-0.9	0.9	0.9
Agriculture	45.8	44.9	1.4	-0.9	-2.1	-2.1	-2.0	-4.5	-4.5
Forestry, fishing, mining, oil and gas	19.8	20.3	0.8	0.5	1.3	1.3	2.5	6.8	6.8
Utilities	4.1	4.6	0.3	0.5	-0.4	-0.4	12.2	-8.0	-8.0
Construction	28.6	27.5	1.0	-1.1	1.2	1.2	-3.8	4.6	4.6
Manufacturing	30.5	30.4	1.0	-0.1	1.0	1.0	-0.3	3.4	3.4
Services-producing sector	351.5	351.8	2.5	0.3	-8.5	-8.5	0.1	-2.4	-2.4
Trade	74.9	73.8	1.5	-1.1	-1.4	-1.4	-1.5	-1.9	-1.9
Transportation and warehousing	26.4	27.0	0.9	0.6	3.7	3.7	2.3	15.9	15.9
Finance, insurance, real estate and leasing	25.1	26.2	0.9	1.1	-0.2	-0.2	4.4	-0.8	-0.8
Professional, scientific and technical services	17.4	17.9	0.7	0.5	-0.2	-0.2	2.9	-1.1	-1.1
Business, building and other support services	13.2	12.1	0.8	-1.1	-1.0	-1.0	-8.3	-7.6	-7.6
Educational services	38.3	39.3	1.1	1.0	-1.0	-1.0	2.6	-2.5	-2.5
Health care and social assistance	57.4	58.1	1.1	0.7	-2.0	-2.0	1.2	-3.3	-3.3
Information, culture and recreation	20.5	19.6	0.8	-0.9	0.2	0.2	-4.4	1.0	1.0
Accommodation and food services	28.0	29.5	1.2	1.5	-5.5	-5.5	5.4	-15.7	-15.7
Other services	23.1	20.9	1.0	-2.2	-2.2	-2.2	-9.5	-9.5	-9.5
Public administration	27.1	27.5	0.8	0.4	1.3	1.3	1.5	5.0	5.0

1. Average standard error of change in two consecutive months (see "Sampling Errors" in Data Quality for further explanations).

Note: Related CANSIM tables 282-0087, 282-0088

Table 4-9

Selected labour force characteristics (seasonally adjusted) — Alberta

	November 2005	December 2005	S.E. ¹	Change from			Percent change from		
				last month	last December	twelve months ago	last month	last December	twelve months ago
in thousands (except rates)									
Both sexes, 15 years and over									
Population	2,580.5	2,587.2	...	6.7	61.2	61.2	0.3	2.4	2.4
Labour force	1,872.0	1,877.4	7.2	5.4	27.1	27.1	0.3	1.5	1.5
Employment	1,795.1	1,800.7	8.1	5.6	32.6	32.6	0.3	1.8	1.8
Employment full-time	1,499.6	1,499.0	10.3	-0.6	53.5	53.5	0.0	3.7	3.7
Unemployment	76.9	76.7	6.2	-0.2	-5.6	-5.6	-0.3	-6.8	-6.8
Participation rate	72.5	72.6	0.3	0.1	-0.7	-0.7
Unemployment rate	4.1	4.1	0.3	0.0	-0.3	-0.3
Employment rate	69.6	69.6	0.3	0.0	-0.4	-0.4
Part-time rate	16.5	16.7	0.5	0.3	-1.5	-1.5
Both sexes, 15 to 24 years									
Population	480.7	481.9	...	1.2	9.3	9.3	0.2	2.0	2.0
Labour force	337.6	338.5	4.6	0.9	-7.1	-7.1	0.3	-2.1	-2.1
Employment	313.2	314.5	5.1	1.3	-4.7	-4.7	0.4	-1.5	-1.5
Unemployment	24.3	23.9	3.9	-0.4	-2.4	-2.4	-1.6	-9.1	-9.1
Participation rate	70.2	70.2	1.0	0.0	-2.9	-2.9
Unemployment rate	7.2	7.1	1.1	-0.1	-0.5	-0.5
Employment rate	65.2	65.3	1.1	0.1	-2.2	-2.2
Part-time rate	32.8	34.9	1.7	2.1	-3.6	-3.6
Men, 25 years and over									
Population	1,050.7	1,053.6	...	2.9	25.0	25.0	0.3	2.4	2.4
Labour force	849.7	853.8	3.9	4.1	27.4	27.4	0.5	3.3	3.3
Employment	820.2	826.6	4.5	6.4	27.5	27.5	0.8	3.4	3.4
Unemployment	29.5	27.2	3.4	-2.3	-0.1	-0.1	-7.8	-0.4	-0.4
Participation rate	80.9	81.0	0.4	0.1	0.7	0.7
Unemployment rate	3.5	3.2	0.4	-0.3	-0.1	-0.1
Employment rate	78.1	78.5	0.4	0.4	0.8	0.8
Part-time rate	5.1	5.5	0.5	0.4	-0.1	-0.1
Women, 25 years and over									
Population	1,049.2	1,051.7	...	2.5	26.9	26.9	0.2	2.6	2.6
Labour force	684.7	685.1	4.2	0.4	6.8	6.8	0.1	1.0	1.0
Employment	661.6	659.5	4.3	-2.1	9.8	9.8	-0.3	1.5	1.5
Unemployment	23.1	25.6	3.2	2.5	-3.1	-3.1	10.8	-10.8	-10.8
Participation rate	65.3	65.1	0.4	-0.2	-1.1	-1.1
Unemployment rate	3.4	3.7	0.5	0.3	-0.5	-0.5
Employment rate	63.1	62.7	0.4	-0.4	-0.7	-0.7
Part-time rate	22.8	22.2	0.9	-0.6	-1.6	-1.6
Industry									
Population	1,795.1	1,800.7	8.1	5.6	32.6	32.6	0.3	1.8	1.8
Goods-producing sector									
Agriculture	53.9	51.4	2.7	-2.5	-11.6	-11.6	-4.6	-18.4	-18.4
Forestry, fishing, mining, oil and gas	125.9	126.3	3.3	0.4	6.5	6.5	0.3	5.4	5.4
Utilities	14.2	15.3	1.0	1.1	2.0	2.0	7.7	15.0	15.0
Construction	166.5	160.7	4.7	-5.8	-6.9	-6.9	-3.5	-4.1	-4.1
Manufacturing	128.1	129.5	4.0	1.4	-5.7	-5.7	1.1	-4.2	-4.2
Services-producing sector									
Trade	1,306.5	1,317.5	8.4	11.0	48.3	48.3	0.8	3.8	3.8
Transportation and warehousing	276.7	283.5	5.2	6.8	10.6	10.6	2.5	3.9	3.9
Finance, insurance, real estate and leasing	113.3	106.1	3.2	-7.2	8.7	8.7	-6.4	8.9	8.9
Professional, scientific and technical services	91.0	95.6	3.0	4.6	3.5	3.5	5.1	3.8	3.8
Business, building and other support services	139.0	144.0	3.6	5.0	25.5	25.5	3.6	21.5	21.5
Educational services	61.7	61.7	3.2	0.0	-1.8	-1.8	0.0	-2.8	-2.8
Health care and social assistance	118.3	125.6	3.3	7.3	12.7	12.7	6.2	11.2	11.2
Information, culture and recreation	174.6	172.1	3.9	-2.5	8.6	8.6	-1.4	5.3	5.3
Accommodation and food services	72.2	68.8	3.1	-3.4	0.7	0.7	-4.7	1.0	1.0
Other services	109.3	108.1	4.0	-1.2	-18.9	-18.9	-1.1	-14.9	-14.9
Public administration	79.7	81.8	3.1	2.1	-2.2	-2.2	2.6	-2.6	-2.6
Public administration	70.6	70.3	2.3	-0.3	0.9	0.9	-0.4	1.3	1.3

1. Average standard error of change in two consecutive months (see "Sampling Errors" in Data Quality for further explanations).

Note: Related CANSIM tables 282-0087, 282-0088

Table 4-10

Selected labour force characteristics (seasonally adjusted) — British Columbia

	November 2005	December 2005	S.E. ¹	Change from			Percent change from		
				last month	last December	twelve months ago	last month	last December	twelve months ago
in thousands (except rates)									
Both sexes, 15 years and over									
Population	3,473.2	3,478.3	...	5.1	64.2	64.2	0.1	1.9	1.9
Labour force	2,278.9	2,285.2	10.9	6.3	57.0	57.0	0.3	2.6	2.6
Employment	2,166.5	2,169.2	11.4	2.7	79.7	79.7	0.1	3.8	3.8
Employment full-time	1,724.3	1,731.3	13.8	7.0	67.4	67.4	0.4	4.1	4.1
Unemployment	112.4	116.1	9.0	3.7	-22.7	-22.7	3.3	-16.4	-16.4
Participation rate	65.6	65.7	0.3	0.1	0.4	0.4
Unemployment rate	4.9	5.1	0.4	0.2	-1.1	-1.1
Employment rate	62.4	62.4	0.3	0.0	1.2	1.2
Part-time rate	20.4	20.2	0.6	-0.2	-0.2	-0.2
Both sexes, 15 to 24 years									
Population	574.1	574.5	...	0.4	9.4	9.4	0.1	1.7	1.7
Labour force	373.4	378.8	6.3	5.4	20.2	20.2	1.4	5.6	5.6
Employment	347.8	348.2	6.4	0.4	29.7	29.7	0.1	9.3	9.3
Unemployment	25.6	30.6	5.3	5.0	-9.5	-9.5	19.5	-23.7	-23.7
Participation rate	65.0	65.9	1.1	0.9	2.4	2.4
Unemployment rate	6.9	8.1	1.4	1.2	-3.1	-3.1
Employment rate	60.6	60.6	1.1	0.0	4.2	4.2
Part-time rate	43.9	43.2	2.0	-0.7	0.6	0.6
Men, 25 years and over									
Population	1,415.6	1,418.0	...	2.4	27.5	27.5	0.2	2.0	2.0
Labour force	1,018.2	1,022.7	5.7	4.5	15.0	15.0	0.4	1.5	1.5
Employment	973.9	977.6	6.2	3.7	25.4	25.4	0.4	2.7	2.7
Unemployment	44.3	45.1	5.3	0.8	-10.4	-10.4	1.8	-18.7	-18.7
Participation rate	71.9	72.1	0.4	0.2	-0.4	-0.4
Unemployment rate	4.4	4.4	0.5	0.0	-1.1	-1.1
Employment rate	68.8	68.9	0.5	0.1	0.4	0.4
Part-time rate	7.5	6.8	0.6	-0.7	-1.2	-1.2
Women, 25 years and over									
Population	1,483.5	1,485.9	...	2.4	27.3	27.3	0.2	1.9	1.9
Labour force	887.3	883.7	6.2	-3.6	21.8	21.8	-0.4	2.5	2.5
Employment	844.8	843.3	6.5	-1.5	24.5	24.5	-0.2	3.0	3.0
Unemployment	42.5	40.4	4.7	-2.1	-2.8	-2.8	-4.9	-6.5	-6.5
Participation rate	59.8	59.5	0.4	-0.3	0.4	0.4
Unemployment rate	4.8	4.6	0.5	-0.2	-0.4	-0.4
Employment rate	56.9	56.8	0.4	-0.1	0.7	0.7
Part-time rate	25.7	26.2	1.0	0.6	0.1	0.1
Industry	2,166.5	2,169.2	11.4	2.7	79.7	79.7	0.1	3.8	3.8
Goods-producing sector	456.5	456.7	8.2	0.2	8.6	8.6	0.0	1.9	1.9
Agriculture	33.8	39.5	2.7	5.7	0.7	0.7	16.9	1.8	1.8
Forestry, fishing, mining, oil and gas	35.1	36.4	2.5	1.3	-0.5	-0.5	3.7	-1.4	-1.4
Utilities	9.2	8.0	1.1	-1.2	0.5	0.5	-13.0	6.7	6.7
Construction	171.4	178.8	5.3	7.4	22.0	22.0	4.3	14.0	14.0
Manufacturing	207.1	194.1	5.6	-13.0	-14.1	-14.1	-6.3	-6.8	-6.8
Services-producing sector	1,710.1	1,712.4	11.3	2.3	71.1	71.1	0.1	4.3	4.3
Trade	354.8	353.5	7.1	-1.3	41.6	41.6	-0.4	13.3	13.3
Transportation and warehousing	123.1	119.1	4.0	-4.0	6.1	6.1	-3.2	5.4	5.4
Finance, insurance, real estate and leasing	133.8	133.4	4.4	-0.4	-2.7	-2.7	-0.3	-2.0	-2.0
Professional, scientific and technical services	164.9	164.4	4.8	-0.5	10.1	10.1	-0.3	6.5	6.5
Business, building and other support services	88.7	88.3	4.3	-0.4	4.5	4.5	-0.5	5.4	5.4
Educational services	143.2	147.7	4.8	4.5	14.5	14.5	3.1	10.9	10.9
Health care and social assistance	219.3	213.1	5.0	-6.2	-9.6	-9.6	-2.8	-4.3	-4.3
Information, culture and recreation	126.8	127.6	4.6	0.8	14.8	14.8	0.6	13.1	13.1
Accommodation and food services	177.2	181.7	5.4	4.5	-1.0	-1.0	2.5	-0.5	-0.5
Other services	88.9	91.0	4.1	2.1	-3.1	-3.1	2.4	-3.3	-3.3
Public administration	89.2	92.8	3.3	3.6	-3.9	-3.9	4.0	-4.0	-4.0

1. Average standard error of change in two consecutive months (see "Sampling Errors" in Data Quality for further explanations).

Note: Related CANSIM tables 282-0087, 282-0088

Table 5-1

Labour force characteristics by census metropolitan area (seasonally adjusted) — 3 month moving average

	November 2005	December 2005	S.E. ¹	Change from			Percent change from		
				last month	last December	twelve months ago	last month	last December	twelve months ago
in thousands (except rates)									
St. John's, Newfoundland and Labrador									
Population	151.5	152.0	...	0.5	1.5	1.5	0.3	1.0	1.0
Labour force	99.1	98.6	0.9	-0.5	-1.2	-1.2	-0.5	-1.2	-1.2
Employment	91.0	90.6	0.9	-0.4	-0.8	-0.8	-0.4	-0.9	-0.9
Unemployment	8.1	8.0	0.6	-0.1	-0.4	-0.4	-1.2	-4.8	-4.8
Participation rate	65.4	64.9	0.6	-0.5	-1.4	-1.4
Unemployment rate	8.2	8.1	0.6	-0.1	-0.3	-0.3
Employment rate	60.1	59.6	0.6	-0.5	-1.1	-1.1
Halifax, Nova Scotia									
Population	312.1	313.5	...	1.4	4.3	4.3	0.4	1.4	1.4
Labour force	214.9	215.5	1.3	0.6	-2.8	-2.8	0.3	-1.3	-1.3
Employment	203.2	203.4	1.3	0.2	-1.7	-1.7	0.1	-0.8	-0.8
Unemployment	11.7	12.0	0.7	0.3	-1.2	-1.2	2.6	-9.1	-9.1
Participation rate	68.9	68.7	0.4	-0.2	-1.9	-1.9
Unemployment rate	5.4	5.6	0.3	0.2	-0.4	-0.4
Employment rate	65.1	64.9	0.4	-0.2	-1.4	-1.4
Saint John, New Brunswick									
Population	103.0	102.9	...	-0.1	0.5	0.5	-0.1	0.5	0.5
Labour force	64.8	66.0	0.7	1.2	-0.9	-0.9	1.9	-1.3	-1.3
Employment	59.9	61.5	0.7	1.6	-0.4	-0.4	2.7	-0.6	-0.6
Unemployment	4.9	4.5	0.4	-0.4	-0.5	-0.5	-8.2	-10.0	-10.0
Participation rate	62.9	64.1	0.7	1.2	-1.2	-1.2
Unemployment rate	7.6	6.8	0.5	-0.8	-0.7	-0.7
Employment rate	58.2	59.8	0.7	1.6	-0.6	-0.6
Saguenay, Quebec									
Population	126.4	126.4	...	0.0	-0.1	-0.1	0.0	-0.1	-0.1
Labour force	76.3	75.9	0.8	-0.4	-3.3	-3.3	-0.5	-4.2	-4.2
Employment	67.8	68.3	0.8	0.5	-2.3	-2.3	0.7	-3.3	-3.3
Unemployment	8.4	7.6	0.5	-0.8	-1.0	-1.0	-9.5	-11.6	-11.6
Participation rate	60.4	60.0	0.6	-0.4	-2.6	-2.6
Unemployment rate	11.0	10.0	0.6	-1.0	-0.9	-0.9
Employment rate	53.6	54.0	0.6	0.4	-1.8	-1.8
Québec, Quebec									
Population	595.8	597.1	...	1.3	7.6	7.6	0.2	1.3	1.3
Labour force	399.3	399.4	3.1	0.1	9.0	9.0	0.0	2.3	2.3
Employment	378.8	379.9	3.1	1.1	11.2	11.2	0.3	3.0	3.0
Unemployment	20.4	19.5	1.5	-0.9	-2.2	-2.2	-4.4	-10.1	-10.1
Participation rate	67.0	66.9	0.5	-0.1	0.7	0.7
Unemployment rate	5.1	4.9	0.4	-0.2	-0.7	-0.7
Employment rate	63.6	63.6	0.5	0.0	1.1	1.1
Trois-Rivières, Quebec									
Population	118.7	118.9	...	0.2	1.2	1.2	0.2	1.0	1.0
Labour force	75.2	75.9	0.8	0.7	3.7	3.7	0.9	5.1	5.1
Employment	69.1	69.3	0.8	0.2	4.1	4.1	0.3	6.3	6.3
Unemployment	6.1	6.6	0.4	0.5	-0.4	-0.4	8.2	-5.7	-5.7
Participation rate	63.4	63.8	0.7	0.4	2.5	2.5
Unemployment rate	8.1	8.7	0.6	0.6	-1.0	-1.0
Employment rate	58.2	58.3	0.7	0.1	2.9	2.9

See footnotes at the end of the table.

Table 5-1 – continued

Labour force characteristics by census metropolitan area (seasonally adjusted) — 3 month moving average

	November 2005	December 2005	S.E. ¹	Change from			Percent change from		
				last month	last December	twelve months ago	last month	last December	twelve months ago
in thousands (except rates)									
Sherbrooke, Quebec									
Population	135.2	135.9	...	0.7	2.6	2.6	0.5	2.0	2.0
Labour force	86.4	87.9	0.8	1.5	-1.1	-1.1	1.7	-1.2	-1.2
Employment	80.3	82.0	0.8	1.7	-1.0	-1.0	2.1	-1.2	-1.2
Unemployment	6.1	5.9	0.4	-0.2	-0.1	-0.1	-3.3	-1.7	-1.7
Participation rate	63.9	64.7	0.6	0.8	-2.1	-2.1
Unemployment rate	7.1	6.7	0.5	-0.4	0.0	0.0
Employment rate	59.4	60.3	0.6	0.9	-2.0	-2.0
Montréal, Quebec									
Population	2,981.6	2,986.6	...	5.0	40.8	40.8	0.2	1.4	1.4
Labour force	2,008.5	2,015.2	7.5	6.7	24.9	24.9	0.3	1.3	1.3
Employment	1,827.0	1,829.0	7.7	2.0	21.8	21.8	0.1	1.2	1.2
Unemployment	181.4	186.3	4.9	4.9	3.2	3.2	2.7	1.7	1.7
Participation rate	67.4	67.5	0.3	0.1	-0.1	-0.1
Unemployment rate	9.0	9.2	0.2	0.2	0.0	0.0
Employment rate	61.3	61.2	0.3	-0.1	-0.1	-0.1
Ottawa-Gatineau, Ontario/Quebec									
Population	938.0	939.9	...	1.9	15.9	15.9	0.2	1.7	1.7
Labour force	663.1	670.1	3.5	7.0	4.6	4.6	1.1	0.7	0.7
Employment	622.2	632.5	3.6	10.3	10.1	10.1	1.7	1.6	1.6
Unemployment	40.9	37.7	1.8	-3.2	-5.4	-5.4	-7.8	-12.5	-12.5
Participation rate	70.7	71.3	0.4	0.6	-0.7	-0.7
Unemployment rate	6.2	5.6	0.3	-0.6	-0.9	-0.9
Employment rate	66.3	67.3	0.4	1.0	-0.1	-0.1
Ottawa-Gatineau, Quebec part, Ontario/Quebec									
Population	232.8	233.4	...	0.6	6.5	6.5	0.3	2.9	2.9
Labour force	169.7	172.3	1.3	2.6	9.9	9.9	1.5	6.1	6.1
Employment	158.6	162.0	1.4	3.4	11.0	11.0	2.1	7.3	7.3
Unemployment	11.0	10.3	0.7	-0.7	-1.0	-1.0	-6.4	-8.8	-8.8
Participation rate	72.9	73.8	0.6	0.9	2.2	2.2
Unemployment rate	6.5	6.0	0.4	-0.5	-1.0	-1.0
Employment rate	68.1	69.4	0.6	1.3	2.9	2.9
Ottawa-Gatineau, Ontario part, Ontario/Quebec									
Population	705.3	706.5	...	1.2	9.4	9.4	0.2	1.3	1.3
Labour force	493.4	497.9	3.2	4.5	-5.2	-5.2	0.9	-1.0	-1.0
Employment	463.5	470.5	3.4	7.0	-0.9	-0.9	1.5	-0.2	-0.2
Unemployment	29.9	27.4	1.7	-2.5	-4.3	-4.3	-8.4	-13.6	-13.6
Participation rate	70.0	70.5	0.5	0.5	-1.7	-1.7
Unemployment rate	6.1	5.5	0.4	-0.6	-0.8	-0.8
Employment rate	65.7	66.6	0.5	0.9	-1.0	-1.0
Kingston, Ontario									
Population	126.0	126.5	...	0.5	2.1	2.1	0.4	1.7	1.7
Labour force	80.8	80.2	0.9	-0.6	1.8	1.8	-0.7	2.3	2.3
Employment	76.9	76.7	0.9	-0.2	2.9	2.9	-0.3	3.9	3.9
Unemployment	3.9	3.6	0.4	-0.3	-1.0	-1.0	-7.7	-21.7	-21.7
Participation rate	64.1	63.4	0.7	-0.7	0.4	0.4
Unemployment rate	4.8	4.5	0.5	-0.3	-1.4	-1.4
Employment rate	61.0	60.6	0.7	-0.4	1.3	1.3

See footnotes at the end of the table.

Table 5-1 – continued

Labour force characteristics by census metropolitan area (seasonally adjusted) — 3 month moving average

	November 2005	December 2005	S.E. ¹	Change from			Percent change from		
				last month	last December	twelve months ago	last month	last December	twelve months ago
in thousands (except rates)									
Toronto, Ontario									
Population	4,307.8	4,312.3	...	4.5	98.2	98.2	0.1	2.3	2.3
Labour force	3,001.9	2,989.9	8.5	-12.0	62.0	62.0	-0.4	2.1	2.1
Employment	2,808.4	2,800.1	9.0	-8.3	95.9	95.9	-0.3	3.5	3.5
Unemployment	193.5	189.8	5.6	-3.7	-33.9	-33.9	-1.9	-15.2	-15.2
Participation rate	69.7	69.3	0.2	-0.4	-0.2	-0.2
Unemployment rate	6.4	6.3	0.2	-0.1	-1.3	-1.3
Employment rate	65.2	64.9	0.2	-0.3	0.7	0.7
Hamilton, Ontario									
Population	583.5	583.9	...	0.4	8.6	8.6	0.1	1.5	1.5
Labour force	390.3	393.7	2.8	3.4	-2.7	-2.7	0.9	-0.7	-0.7
Employment	367.5	370.2	2.9	2.7	-0.9	-0.9	0.7	-0.2	-0.2
Unemployment	22.8	23.6	1.5	0.8	-1.7	-1.7	3.5	-6.7	-6.7
Participation rate	66.9	67.4	0.5	0.5	-1.5	-1.5
Unemployment rate	5.8	6.0	0.4	0.2	-0.4	-0.4
Employment rate	63.0	63.4	0.5	0.4	-1.1	-1.1
Kitchener, Ontario									
Population	366.8	367.5	...	0.7	7.1	7.1	0.2	2.0	2.0
Labour force	264.2	264.3	1.9	0.1	13.8	13.8	0.0	5.5	5.5
Employment	249.2	249.4	2.0	0.2	9.0	9.0	0.1	3.7	3.7
Unemployment	15.0	15.0	0.8	0.0	4.9	4.9	0.0	48.5	48.5
Participation rate	72.0	71.9	0.5	-0.1	2.4	2.4
Unemployment rate	5.7	5.7	0.3	0.0	1.7	1.7
Employment rate	67.9	67.9	0.6	0.0	1.2	1.2
London, Ontario									
Population	376.9	378.1	...	1.2	5.3	5.3	0.3	1.4	1.4
Labour force	259.0	257.8	2.0	-1.2	-1.7	-1.7	-0.5	-0.7	-0.7
Employment	241.3	240.3	2.1	-1.0	-1.7	-1.7	-0.4	-0.7	-0.7
Unemployment	17.6	17.5	0.9	-0.1	0.0	0.0	-0.6	0.0	0.0
Participation rate	68.7	68.2	0.5	-0.5	-1.4	-1.4
Unemployment rate	6.8	6.8	0.4	0.0	0.1	0.1
Employment rate	64.0	63.6	0.6	-0.4	-1.3	-1.3
Oshawa, Ontario									
Population	266.2	265.7	...	-0.5	7.9	7.9	-0.2	3.1	3.1
Labour force	185.5	185.8	1.3	0.3	6.0	6.0	0.2	3.3	3.3
Employment	174.3	173.6	1.3	-0.7	4.0	4.0	-0.4	2.4	2.4
Unemployment	11.2	12.2	0.5	1.0	2.0	2.0	8.9	19.6	19.6
Participation rate	69.7	69.9	0.5	0.2	0.2	0.2
Unemployment rate	6.0	6.6	0.3	0.6	0.9	0.9
Employment rate	65.5	65.3	0.5	-0.2	-0.5	-0.5
St. Catharines-Niagara, Ontario									
Population	325.9	326.2	...	0.3	2.8	2.8	0.1	0.9	0.9
Labour force	202.7	201.1	1.8	-1.6	-7.1	-7.1	-0.8	-3.4	-3.4
Employment	188.5	187.1	1.9	-1.4	-7.3	-7.3	-0.7	-3.8	-3.8
Unemployment	14.3	14.0	0.9	-0.3	0.2	0.2	-2.1	1.4	1.4
Participation rate	62.2	61.6	0.6	-0.6	-2.8	-2.8
Unemployment rate	7.1	7.0	0.4	-0.1	0.4	0.4
Employment rate	57.8	57.4	0.6	-0.4	-2.7	-2.7

See footnotes at the end of the table.

Table 5-1 – continued

Labour force characteristics by census metropolitan area (seasonally adjusted) — 3 month moving average

	November 2005	December 2005	S.E. ¹	Change from			Percent change from		
				last month	last December	twelve months ago	last month	last December	twelve months ago
in thousands (except rates)									
Greater Sudbury / Grand Sudbury, Ontario									
Population	131.5	131.1	...	-0.4	0.4	0.4	-0.3	0.3	0.3
Labour force	81.0	80.1	0.7	-0.9	-5.7	-5.7	-1.1	-6.6	-6.6
Employment	74.9	74.3	0.7	-0.6	-5.2	-5.2	-0.8	-6.5	-6.5
Unemployment	6.1	5.8	0.4	-0.3	-0.5	-0.5	-4.9	-7.9	-7.9
Participation rate	61.6	61.1	0.5	-0.5	-4.5	-4.5
Unemployment rate	7.5	7.2	0.5	-0.3	-0.1	-0.1
Employment rate	57.0	56.7	0.5	-0.3	-4.1	-4.1
Thunder Bay, Ontario									
Population	102.2	101.2	...	-1.0	0.0	0.0	-1.0	0.0	0.0
Labour force	65.6	64.6	0.6	-1.0	-3.4	-3.4	-1.5	-5.0	-5.0
Employment	61.4	60.5	0.7	-0.9	-1.8	-1.8	-1.5	-2.9	-2.9
Unemployment	4.2	4.0	0.3	-0.2	-1.7	-1.7	-4.8	-29.8	-29.8
Participation rate	64.2	63.8	0.6	-0.4	-3.4	-3.4
Unemployment rate	6.4	6.2	0.5	-0.2	-2.2	-2.2
Employment rate	60.1	59.8	0.6	-0.3	-1.8	-1.8
Windsor, Ontario									
Population	270.9	272.2	...	1.3	4.6	4.6	0.5	1.7	1.7
Labour force	175.4	177.1	1.6	1.7	-3.2	-3.2	1.0	-1.8	-1.8
Employment	162.7	164.9	1.6	2.2	2.1	2.1	1.4	1.3	1.3
Unemployment	12.7	12.2	0.8	-0.5	-5.2	-5.2	-3.9	-29.9	-29.9
Participation rate	64.7	65.1	0.6	0.4	-2.3	-2.3
Unemployment rate	7.2	6.9	0.5	-0.3	-2.8	-2.8
Employment rate	60.1	60.6	0.6	0.5	-0.2	-0.2
Winnipeg, Manitoba									
Population	570.2	570.4	...	0.2	4.4	4.4	0.0	0.8	0.8
Labour force	390.8	392.3	1.3	1.5	-8.9	-8.9	0.4	-2.2	-2.2
Employment	372.8	375.2	1.4	2.4	-4.7	-4.7	0.6	-1.2	-1.2
Unemployment	17.9	17.1	0.8	-0.8	-4.2	-4.2	-4.5	-19.7	-19.7
Participation rate	68.5	68.8	0.2	0.3	-2.1	-2.1
Unemployment rate	4.6	4.4	0.2	-0.2	-0.9	-0.9
Employment rate	65.4	65.8	0.2	0.4	-1.3	-1.3
Regina, Saskatchewan									
Population	159.9	159.5	...	-0.4	1.1	1.1	-0.3	0.7	0.7
Labour force	111.7	111.1	0.7	-0.6	-3.0	-3.0	-0.5	-2.6	-2.6
Employment	105.9	105.4	0.7	-0.5	-2.8	-2.8	-0.5	-2.6	-2.6
Unemployment	5.8	5.7	0.4	-0.1	-0.2	-0.2	-1.7	-3.4	-3.4
Participation rate	69.9	69.7	0.5	-0.2	-2.3	-2.3
Unemployment rate	5.2	5.1	0.3	-0.1	-0.1	-0.1
Employment rate	66.2	66.1	0.5	-0.1	-2.2	-2.2
Saskatoon, Saskatchewan									
Population	189.3	190.2	...	0.9	2.5	2.5	0.5	1.3	1.3
Labour force	132.8	133.0	0.9	0.2	-0.8	-0.8	0.2	-0.6	-0.6
Employment	125.5	125.6	0.9	0.1	-0.8	-0.8	0.1	-0.6	-0.6
Unemployment	7.4	7.5	0.4	0.1	0.1	0.1	1.4	1.4	1.4
Participation rate	70.2	69.9	0.5	-0.3	-1.4	-1.4
Unemployment rate	5.6	5.6	0.3	0.0	0.1	0.1
Employment rate	66.3	66.0	0.5	-0.3	-1.3	-1.3

See footnotes at the end of the table.

Table 5-1 – continued

Labour force characteristics by census metropolitan area (seasonally adjusted) — 3 month moving average

	November 2005	December 2005	S.E. ¹	Change from			Percent change from		
				last month	last December	twelve months ago	last month	last December	twelve months ago
in thousands (except rates)									
Calgary, Alberta									
Population	861.6	863.4	...	1.8	22.2	22.2	0.2	2.6	2.6
Labour force	634.5	639.7	3.0	5.2	13.5	13.5	0.8	2.2	2.2
Employment	606.7	611.6	3.0	4.9	15.4	15.4	0.8	2.6	2.6
Unemployment	27.7	28.1	1.7	0.4	-1.9	-1.9	1.4	-6.3	-6.3
Participation rate	73.6	74.1	0.4	0.5	-0.3	-0.3
Unemployment rate	4.4	4.4	0.3	0.0	-0.4	-0.4
Employment rate	70.4	70.8	0.4	0.4	-0.1	-0.1
Edmonton, Alberta									
Population	822.1	826.1	...	4.0	18.2	18.2	0.5	2.3	2.3
Labour force	575.7	572.9	2.6	-2.8	-20.6	-20.6	-0.5	-3.5	-3.5
Employment	550.8	547.9	2.7	-2.9	-14.3	-14.3	-0.5	-2.5	-2.5
Unemployment	24.9	25.0	1.4	0.1	-6.2	-6.2	0.4	-19.9	-19.9
Participation rate	70.0	69.3	0.3	-0.7	-4.2	-4.2
Unemployment rate	4.3	4.4	0.2	0.1	-0.9	-0.9
Employment rate	67.0	66.3	0.4	-0.7	-3.3	-3.3
Abbotsford, British Columbia									
Population	129.4	131.6	...	2.2	4.1	4.1	1.7	3.2	3.2
Labour force	86.0	88.8	0.8	2.8	3.4	3.4	3.3	4.0	4.0
Employment	81.2	83.9	0.8	2.7	4.7	4.7	3.3	5.9	5.9
Unemployment	4.7	4.9	0.4	0.2	-1.3	-1.3	4.3	-21.0	-21.0
Participation rate	66.5	67.5	0.6	1.0	0.5	0.5
Unemployment rate	5.5	5.5	0.4	0.0	-1.8	-1.8
Employment rate	62.8	63.8	0.6	1.0	1.7	1.7
Vancouver, British Columbia									
Population	1,832.1	1,832.9	...	0.8	37.2	37.2	0.0	2.1	2.1
Labour force	1,217.7	1,223.2	4.9	5.5	18.3	18.3	0.5	1.5	1.5
Employment	1,158.9	1,165.7	5.1	6.8	36.8	36.8	0.6	3.3	3.3
Unemployment	58.8	57.5	3.0	-1.3	-18.5	-18.5	-2.2	-24.3	-24.3
Participation rate	66.5	66.7	0.3	0.2	-0.4	-0.4
Unemployment rate	4.8	4.7	0.2	-0.1	-1.6	-1.6
Employment rate	63.3	63.6	0.3	0.3	0.7	0.7
Victoria, British Columbia									
Population	272.0	271.1	...	-0.9	2.6	2.6	-0.3	1.0	1.0
Labour force	179.3	175.8	1.7	-3.5	6.8	6.8	-2.0	4.0	4.0
Employment	171.3	168.2	1.8	-3.1	8.4	8.4	-1.8	5.3	5.3
Unemployment	8.0	7.6	0.7	-0.4	-1.6	-1.6	-5.0	-17.4	-17.4
Participation rate	65.9	64.8	0.7	-1.1	1.9	1.9
Unemployment rate	4.5	4.3	0.4	-0.2	-1.1	-1.1
Employment rate	63.0	62.0	0.7	-1.0	2.5	2.5

1. Average standard error of change in two consecutive months (see "Sampling Errors" in Data Quality for further explanations).

Note: Related CANSIM table 282-0090

Table 5-2

Labour force characteristics by census metropolitan area (seasonally adjusted) — Monthly

	November 2005	December 2005	S.E. ¹	Change from			Percent change from		
				last month	last December	twelve months ago	last month	last December	twelve months ago
in thousands (except rates)									
Montréal, Quebec									
Population	2,986.8	2,989.6	...	2.8	41.0	41.0	0.1	1.4	1.4
Labour force	2,004.7	2,023.1	16.0	18.4	40.9	40.9	0.9	2.1	2.1
Employment	1,823.3	1,827.7	16.3	4.4	27.0	27.0	0.2	1.5	1.5
Unemployment	181.4	195.3	11.9	13.9	13.7	13.7	7.7	7.5	7.5
Participation rate	67.1	67.7	0.5	0.6	0.5	0.5
Unemployment rate	9.0	9.7	0.6	0.7	0.5	0.5
Employment rate	61.0	61.1	0.6	0.1	0.0	0.0
Toronto, Ontario									
Population	4,312.6	4,319.0	...	6.4	98.7	98.7	0.1	2.3	2.3
Labour force	2,987.1	2,959.9	19.2	-27.2	34.8	34.8	-0.9	1.2	1.2
Employment	2,804.8	2,773.9	19.4	-30.9	81.3	81.3	-1.1	3.0	3.0
Unemployment	182.3	185.9	13.6	3.6	-46.6	-46.6	2.0	-20.0	-20.0
Participation rate	69.3	68.5	0.5	-0.8	-0.8	-0.8
Unemployment rate	6.1	6.3	0.5	0.2	-1.6	-1.6
Employment rate	65.0	64.2	0.5	-0.8	0.4	0.4
Vancouver, British Columbia									
Population	1,833.0	1,836.0	...	3.0	37.7	37.7	0.2	2.1	2.1
Labour force	1,235.9	1,227.2	10.7	-8.7	17.1	17.1	-0.7	1.4	1.4
Employment	1,178.4	1,168.3	11.1	-10.1	28.8	28.8	-0.9	2.5	2.5
Unemployment	57.6	58.9	7.4	1.3	-11.8	-11.8	2.3	-16.7	-16.7
Participation rate	67.4	66.8	0.6	-0.6	-0.5	-0.5
Unemployment rate	4.7	4.8	0.6	0.1	-1.0	-1.0
Employment rate	64.3	63.6	0.6	-0.7	0.2	0.2

1. Average standard error of change in two consecutive months (see "Sampling Errors" in Data Quality for further explanations).

Note: Related CANSIM table 282-0091

Table 6

Labour force characteristics by economic region¹ and for Yukon Territory and Northwest Territories, unadjusted, 3 month moving average ending in December 2004 and December 2005

	Population	Labour force			Participation rate	Unemployment rate	Employment rate
		Labour force	Employment	Unemployment			
in thousands							
Canada²							
2004	25,571.4	17,183.8	16,041.4	1,142.3	67.2	6.6	62.7
2005	25,958.3	17,335.7	16,285.6	1,050.1	66.8	6.1	62.7
Newfoundland and Labrador							
2004	430.3	247.0	210.4	36.6	57.4	14.8	48.9
2005	429.3	248.1	211.3	36.7	57.8	14.8	49.2
Avalon Peninsula (010)							
2004	209.3	126.9	113.3	13.5	60.6	10.6	54.1
2005	210.5	128.6	114.0	14.6	61.1	11.4	54.2
South Coast-Burin Peninsula (020)							
2004	34.2	18.6	14.6	4.0	54.4	21.5	42.7
2005	33.4	16.8	12.8	3.9	50.3	23.2	38.3
West Coast-Northern Peninsula-Labrador (030)							
2004	90.2	50.6	41.0	9.6	56.1	19.0	45.5
2005	89.5	51.7	43.4	8.3	57.8	16.1	48.5
Notre Dame-Central Bonavista Bay (040)							
2004	96.6	50.8	41.4	9.4	52.6	18.5	42.9
2005	95.9	50.9	41.1	9.9	53.1	19.4	42.9
Prince Edward Island							
2004	111.2	75.1	67.2	8.0	67.5	10.7	60.4
2005	111.9	75.5	67.5	8.0	67.5	10.6	60.3
Nova Scotia							
2004	758.5	483.8	444.6	39.2	63.8	8.1	58.6
2005	761.8	481.5	443.7	37.8	63.2	7.9	58.2
Cape Breton (210)							
2004	116.9	57.2	48.5	8.7	48.9	15.2	41.5
2005	116.0	64.8	55.4	9.4	55.9	14.5	47.8
North Shore (220)							
2004	130.3	80.2	72.2	8.0	61.6	10.0	55.4
2005	130.1	80.3	74.5	5.8	61.7	7.2	57.3
Annapolis Valley (230)							
2004	99.0	64.8	60.6	4.2	65.5	6.5	61.2
2005	99.3	62.5	57.5	5.0	62.9	8.0	57.9
Southern (240)							
2004	103.1	64.3	58.1	6.2	62.4	9.6	56.4
2005	103.0	59.6	53.0	6.6	57.9	11.1	51.5
Halifax (250)							
2004	309.2	217.3	205.1	12.2	70.3	5.6	66.3
2005	313.5	214.3	203.2	11.1	68.4	5.2	64.8
New Brunswick							
2004	608.4	384.5	350.6	33.9	63.2	8.8	57.6
2005	611.4	386.8	351.6	35.2	63.3	9.1	57.5
Campbellton-Miramichi (310)							
2004	137.5	77.9	65.8	12.2	56.7	15.7	47.9
2005	136.4	78.8	66.9	12.0	57.8	15.2	49.0

See footnotes at the end of the table.

Table 6 – continued

Labour force characteristics by economic region¹ and for Yukon Territory and Northwest Territories, unadjusted, 3 month moving average ending in December 2004 and December 2005

	Population	Labour force			Participation rate	Unemployment rate	Employment rate
		Labour force	Employment	Unemployment			
	in thousands						
Moncton-Richibucto (320)							
2004	159.2	103.7	96.4	7.3	65.1	7.0	60.6
2005	161.3	105.1	97.0	8.1	65.2	7.7	60.1
Saint John-St. Stephen (330)							
2004	140.3	88.6	82.3	6.3	63.2	7.1	58.7
2005	140.9	88.7	83.0	5.8	63.0	6.5	58.9
Fredericton-Oromocto (340)							
2004	102.8	71.5	66.5	5.0	69.6	7.0	64.7
2005	104.0	69.0	63.8	5.3	66.3	7.7	61.3
Edmundston-Woodstock (350)							
2004	68.6	42.9	39.7	3.2	62.5	7.5	57.9
2005	68.8	45.0	40.9	4.1	65.4	9.1	59.4
Quebec							
2004	6,138.8	4,036.5	3,699.3	337.2	65.8	8.4	60.3
2005	6,210.5	4,059.9	3,737.8	322.0	65.4	7.9	60.2
Gaspésie-Îles-de-la-Madeleine (410)							
2004	79.7	39.6	31.6	8.0	49.7	20.2	39.6
2005	79.9	39.4	33.3	6.1	49.3	15.5	41.7
Bas-Saint-Laurent (415)							
2004	166.1	102.4	95.3	7.1	61.6	6.9	57.4
2005	166.5	97.2	90.0	7.3	58.4	7.5	54.1
Québec (420)							
2004	551.7	352.5	334.3	18.3	63.9	5.2	60.6
2005	558.1	355.7	339.9	15.7	63.7	4.4	60.9
Chaudière-Appalaches (425)							
2004	321.8	219.9	206.9	13.0	68.3	5.9	64.3
2005	324.8	221.9	211.5	10.4	68.3	4.7	65.1
Estrie (430)							
2004	243.3	157.2	146.0	11.2	64.6	7.1	60.0
2005	246.5	155.2	145.8	9.4	63.0	6.1	59.1
Centre-du-Québec (433)							
2004	181.0	125.8	116.9	8.8	69.5	7.0	64.6
2005	182.6	124.6	115.2	9.4	68.2	7.5	63.1
Montérégie (435)							
2004	1,085.6	729.3	680.1	49.2	67.2	6.7	62.6
2005	1,102.0	751.2	700.6	50.6	68.2	6.7	63.6
Montréal (440)							
2004	1,561.9	1,026.6	911.5	115.0	65.7	11.2	58.4
2005	1,573.8	1,029.2	908.9	120.3	65.4	11.7	57.8
Laval (445)							
2004	297.2	195.3	182.6	12.7	65.7	6.5	61.4
2005	302.2	200.6	188.6	12.0	66.4	6.0	62.4
Lanaudière (450)							
2004	330.2	226.6	207.4	19.3	68.6	8.5	62.8
2005	337.0	225.1	210.9	14.2	66.8	6.3	62.6

See footnotes at the end of the table.

Table 6 – continued

Labour force characteristics by economic region¹ and for Yukon Territory and Northwest Territories, unadjusted, 3 month moving average ending in December 2004 and December 2005

	Population	Labour force			Participation rate	Unemployment rate	Employment rate
		Labour force	Employment	Unemployment			
in thousands							
Laurentides (455)							
2004	401.2	279.3	261.5	17.7	69.6	6.3	65.2
2005	411.8	272.3	250.8	21.5	66.1	7.9	60.9
Outaouais (460)							
2004	275.2	188.9	175.0	13.9	68.6	7.4	63.6
2005	281.6	198.2	186.7	11.5	70.4	5.8	66.3
Abitibi-Témiscamingue (465)							
2004	114.4	73.3	65.1	8.2	64.1	11.2	56.9
2005	114.2	70.7	65.7	5.0	61.9	7.1	57.5
Mauricie (470)							
2004	214.1	127.2	113.0	14.3	59.4	11.2	52.8
2005	215.2	128.1	117.7	10.4	59.5	8.1	54.7
Saguenay-Lac-Saint-Jean (475)							
2004	224.5	134.3	120.1	14.2	59.8	10.6	53.5
2005	223.8	136.3	122.4	13.9	60.9	10.2	54.7
Côte-Nord and Nord-du-Québec (480 and 490)							
2004	91.0	58.3	52.0	6.2	64.1	10.6	57.1
2005	90.5	54.1	49.7	4.3	59.8	7.9	54.9
Ontario							
2004	9,960.6	6,774.6	6,355.4	419.3	68.0	6.2	63.8
2005	10,141.1	6,835.1	6,448.9	386.2	67.4	5.7	63.6
Ottawa (510)							
2004	963.2	666.8	628.9	37.9	69.2	5.7	65.3
2005	976.6	674.9	639.7	35.3	69.1	5.2	65.5
Kingston-Pembroke (515)							
2004	355.3	222.9	212.2	10.8	62.7	4.8	59.7
2005	359.9	213.1	201.9	11.2	59.2	5.3	56.1
Muskoka-Kawartha (520)							
2004	297.3	171.8	164.4	7.4	57.8	4.3	55.3
2005	302.3	182.2	170.3	11.9	60.3	6.5	56.3
Toronto (530)							
2004	4,445.7	3,067.1	2,852.5	214.6	69.0	7.0	64.2
2005	4,551.8	3,131.9	2,952.3	179.6	68.8	5.7	64.9
Kitchener-Waterloo-Barrie (540)							
2004	917.9	651.0	622.3	28.7	70.9	4.4	67.8
2005	939.3	670.8	639.7	31.2	71.4	4.7	68.1
Hamilton-Niagara Peninsula (550)							
2004	1,100.0	740.5	698.5	42.0	67.3	5.7	63.5
2005	1,115.1	733.6	690.1	43.5	65.8	5.9	61.9
London (560)							
2004	497.7	349.8	331.0	18.9	70.3	5.4	66.5
2005	504.1	345.5	322.8	22.7	68.5	6.6	64.0
Windsor-Sarnia (570)							
2004	517.5	338.0	311.8	26.2	65.3	7.8	60.3
2005	523.7	340.9	319.6	21.3	65.1	6.2	61.0

See footnotes at the end of the table.

Table 6 – continued

Labour force characteristics by economic region¹ and for Yukon Territory and Northwest Territories, unadjusted, 3 month moving average ending in December 2004 and December 2005

	Population	Labour force			Participation rate	Unemployment rate	Employment rate
		Labour force	Employment	Unemployment			
in thousands							
Stratford-Bruce Peninsula (580)							
2004	242.0	171.8	165.6	6.2	71.0	3.6	68.4
2005	244.7	165.3	159.4	6.0	67.6	3.6	65.1
Northeast (590)							
2004	448.8	275.0	256.0	18.9	61.3	6.9	57.0
2005	448.9	269.0	251.9	17.2	59.9	6.4	56.1
Northwest (595)							
2004	175.3	119.9	112.2	7.7	68.4	6.4	64.0
2005	174.7	107.8	101.3	6.5	61.7	6.0	58.0
Manitoba							
2004	884.5	610.0	580.4	29.7	69.0	4.9	65.6
2005	890.0	607.4	583.0	24.4	68.2	4.0	65.5
Southeast (610)							
2004	71.9	50.3	48.1	2.2	70.0	4.4	66.9
2005	73.1	53.7	51.7	2.0	73.5	3.7	70.7
South Central (620)							
2004	41.7	30.5	29.6	0.8	73.1	2.6	71.0
2005	42.1	27.1	26.6	0.6	64.4	2.2	63.2
Southwest (630)							
2004	81.1	52.2	49.9	2.3	64.4	4.4	61.5
2005	80.9	52.3	49.5	2.8	64.6	5.4	61.2
North Central (640)							
2004	35.0	20.7	19.7	1.0	59.1	4.8	56.3
2005	35.2	23.5	22.5	1.1	66.8	4.7	63.9
Winnipeg (650)							
2004	525.2	370.4	352.2	18.1	70.5	4.9	67.1
2005	529.4	361.1	346.2	14.8	68.2	4.1	65.4
Interlake (660)							
2004	66.9	44.9	42.5	2.4	67.1	5.3	63.5
2005	67.6	48.3	46.4	1.9	71.4	3.9	68.6
Parklands and North (670 and 680)							
2004	62.7	41.1	38.4	2.8	65.6	6.8	61.2
2005	61.8	41.4	40.1	1.3	67.0	3.1	64.9
Saskatchewan							
2004	746.8	508.1	483.9	24.2	68.0	4.8	64.8
2005	748.6	501.8	477.6	24.2	67.0	4.8	63.8
Regina-Moose Mountain (710)							
2004	216.8	155.2	148.6	6.6	71.6	4.3	68.5
2005	217.5	149.5	143.2	6.3	68.7	4.2	65.8
Swift Current-Moose Jaw (720)							
2004	82.2	52.0	49.5	2.5	63.3	4.8	60.2
2005	81.9	52.6	50.5	2.2	64.2	4.2	61.7
Saskatoon-Biggar (730)							
2004	231.6	163.9	156.1	7.8	70.8	4.8	67.4
2005	233.7	158.8	151.0	7.8	68.0	4.9	64.6

See footnotes at the end of the table.

Table 6 – continued

Labour force characteristics by economic region¹ and for Yukon Territory and Northwest Territories, unadjusted, 3 month moving average ending in December 2004 and December 2005

	Population	Labour force			Participation rate	Unemployment rate	Employment rate
		Labour force	Employment	Unemployment			
in thousands							
Yorkton-Melville (740)							
2004	66.8	42.1	40.4	1.7	63.0	4.0	60.5
2005	66.2	44.2	42.3	1.9	66.8	4.3	63.9
Prince Albert and Northern (750 and 760)							
2004	149.3	95.0	89.4	5.6	63.6	5.9	59.9
2005	149.3	96.8	90.7	6.1	64.8	6.3	60.8
Alberta							
2004	2,522.5	1,845.3	1,765.1	80.2	73.2	4.3	70.0
2005	2,580.6	1,869.0	1,795.8	73.2	72.4	3.9	69.6
Lethbridge-Medicine Hat (810)							
2004	191.4	137.2	132.8	4.4	71.7	3.2	69.4
2005	193.8	140.3	134.7	5.5	72.4	3.9	69.5
Camrose-Drumheller (820)							
2004	145.3	104.0	100.3	3.7	71.6	3.6	69.0
2005	147.0	105.0	102.3	2.7	71.4	2.6	69.6
Calgary (830)							
2004	905.2	671.4	640.3	31.1	74.2	4.6	70.7
2005	930.8	691.1	660.1	31.0	74.2	4.5	70.9
Banff-Jasper-Rocky Mountain House (840)							
2004	63.1	46.5	45.2	x	73.7	x	71.6
2005	63.2	47.9	45.9	2.0	75.8	4.2	72.6
Red Deer (850)							
2004	128.3	91.0	87.3	3.7	70.9	4.1	68.0
2005	131.9	98.0	94.9	3.1	74.3	3.2	71.9
Edmonton (860)							
2004	839.1	612.1	582.5	29.6	72.9	4.8	69.4
2005	858.3	593.0	569.2	23.8	69.1	4.0	66.3
Athabasca-Grande Prairie-Peace River (870)							
2004	169.6	122.7	118.0	4.6	72.3	3.7	69.6
2005	172.3	131.5	128.6	2.8	76.3	2.1	74.6
Wood Buffalo-Cold Lake (880)							
2004	80.6	60.5	58.7	1.8	75.1	3.0	72.8
2005	83.3	62.3	60.0	2.2	74.8	3.5	72.0
British Columbia							
2004	3,409.8	2,218.9	2,084.7	134.2	65.1	6.0	61.1
2005	3,473.1	2,270.7	2,168.5	102.3	65.4	4.5	62.4
Vancouver Island and Coast (910)							
2004	590.6	360.2	336.3	24.0	61.0	6.7	56.9
2005	599.0	374.2	354.3	19.9	62.5	5.3	59.1
Lower Mainland-Southwest (920)							
2004	2,045.8	1,355.8	1,273.8	82.0	66.3	6.0	62.3
2005	2,089.7	1,383.0	1,325.2	57.8	66.2	4.2	63.4
Thompson-Okanagan (930)							
2004	396.5	247.2	234.9	12.3	62.3	5.0	59.2
2005	403.3	261.0	250.3	10.7	64.7	4.1	62.1

See footnotes at the end of the table.

Table 6 – continued

Labour force characteristics by economic region¹ and for Yukon Territory and Northwest Territories, unadjusted, 3 month moving average ending in December 2004 and December 2005

	Population	Labour force			Participation rate	Unemployment rate	Employment rate
		Labour force	Employment	Unemployment			
	in thousands						
Kootenay (940)							
2004	124.9	80.2	74.9	5.3	64.2	6.6	60.0
2005	126.6	74.7	70.7	4.0	59.0	5.4	55.8
Cariboo (950)							
2004	131.9	90.6	85.5	5.1	68.7	5.6	64.8
2005	133.8	94.1	89.5	4.6	70.3	4.9	66.9
North Coast and Nechako (960 and 970)							
2004	71.4	50.7	46.3	4.4	71.0	8.7	64.8
2005	71.6	49.2	45.4	3.8	68.7	7.7	63.4
Northeast (980)							
2004	48.6	34.3	33.1	x	70.6	x	68.1
2005	49.2	34.5	33.1	x	70.1	x	67.3
Yukon Territory³							
2004	21.6	16.4	15.5	0.9	75.9	5.5	71.8
2005	21.5	15.9	15.3	0.7	74.0	4.4	71.2
Northwest Territories⁴							
2004	30.9	23.4	22.1	1.4	75.7	6.0	71.5
2005	31.6	23.6	22.4	1.2	74.7	5.1	70.9

1. For geographic descriptions of economic regions, refer to the Guide to the Labour Force Survey (catalogue number 71-543-GIE).

2. Estimates for Canada are a sum of the provincial totals and exclude estimates from Yukon Territory, Northwest Territories and Nunavut.

3. Since 1992, the Labour Force Survey has been administered in the Yukon Territory, using an alternative methodology that accommodates some of the operational difficulties inherent to remote locales. These estimates are not included in national totals.

4. Since 2001, the Labour Force Survey has been administered in the Northwest Territories, using an alternative methodology that accommodates some of the operational difficulties inherent to remote locales. These estimates are not included in national totals.

Note: Related CANSIM table 282-0054

Table 7

Average usual hours and wages of employees by selected characteristics, Canada, unadjusted

	Employees				Full-time			Part-time		
	Number	Average weekly hours	Average weekly wages	Average hourly wages	Number	Average weekly hours	Average weekly wages	Number	Average weekly hours	Average weekly wages
	'000		\$		'000		\$	'000		\$
December 2005										
15 years and over	13,700.6	35.3	712.53	19.45	11,153.2	39.5	820.92	2,547.3	17.0	237.97
15 to 24 years	2,345.0	27.1	318.66	10.96	1,189.2	38.9	493.37	1,155.9	14.9	138.91
25 years and over	11,355.5	37.0	793.87	21.20	9,964.0	39.5	860.02	1,391.5	18.7	320.25
Men	6,937.5	37.9	825.11	21.18	6,163.7	40.7	902.94	773.8	15.9	205.13
Women	6,763.0	32.6	597.05	17.67	4,989.5	37.9	719.60	1,773.5	17.4	252.29
Union coverage										
Union coverage	4,383.7	35.8	813.21	22.47	3,762.2	38.6	886.34	621.5	18.9	370.54
No union coverage	9,316.9	35.0	665.16	18.03	7,391.0	39.9	787.63	1,925.9	16.3	195.18
Job permanency										
Permanent	11,987.1	36.4	748.68	20.02	10,244.6	39.5	832.22	1,742.5	18.0	257.58
Temporary	1,713.4	27.7	459.63	15.45	908.6	39.2	693.59	804.8	14.6	195.51
Occupation										
Management	1,006.5	40.1	1,202.56	30.06	979.0	40.7	1,223.69	27.5	20.1	450.97
Business, finance and administrative	2,662.3	35.0	668.57	18.66	2,255.5	38.2	743.57	406.7	17.3	252.68
Natural and applied sciences	962.6	38.4	1,053.58	27.36	925.9	39.3	1,079.67	36.7	17.7	395.18
Health	823.5	33.5	766.64	22.76	625.2	37.8	871.97	198.3	20.2	434.64
Social science, education, government service and religion	1,234.6	33.7	872.16	25.63	966.8	38.4	999.00	267.9	16.9	414.38
Art, culture, recreation and sport	325.8	30.1	642.42	19.92	214.1	39.0	866.70	111.6	12.9	212.25
Sales and service	3,491.3	30.4	421.61	12.85	2,185.7	38.6	575.76	1,305.7	16.6	163.56
Trades, transport and equipment operators	1,981.3	40.1	770.65	19.03	1,852.4	41.7	808.07	128.9	17.4	233.01
Occupations unique to primary industry	225.1	43.2	781.23	17.56	205.1	46.1	842.27	20.0	13.6	154.17
Occupations unique to processing, manufacturing and utilities	987.5	39.2	673.88	17.02	943.6	40.2	695.83	44.0	17.7	202.76
December 2004										
15 years and over	13,541.9	35.2	685.05	18.74	10,944.7	39.5	791.88	2,597.1	17.2	234.88
15 to 24 years	2,312.5	27.1	305.35	10.51	1,164.8	38.9	472.01	1,147.7	15.2	136.21
25 years and over	11,229.4	36.9	763.24	20.43	9,780.0	39.6	829.97	1,449.4	18.8	313.01
Men	6,839.8	38.0	800.00	20.53	6,073.3	40.8	875.17	766.5	16.1	204.35
Women	6,702.1	32.4	567.74	16.91	4,871.4	38.0	688.03	1,830.7	17.6	247.66
Union coverage										
Union coverage	4,332.3	35.7	784.56	21.74	3,678.1	38.6	860.53	654.1	18.9	357.43
No union coverage	9,209.6	35.1	638.24	17.32	7,266.6	40.0	757.13	1,943.0	16.6	193.62
Job permanency										
Permanent	11,892.9	36.3	720.03	19.32	10,066.7	39.5	804.63	1,826.2	18.1	253.71
Temporary	1,648.9	28.0	432.73	14.56	878.0	39.4	645.63	770.9	14.9	190.26
Occupation										
Management	928.7	40.6	1,206.60	29.88	912.0	41.0	1,219.36	16.7	20.1	510.37
Business, finance and administrative	2,627.9	35.0	645.11	18.03	2,216.7	38.3	716.06	411.3	17.6	262.67
Natural and applied sciences	939.1	38.6	1,021.26	26.50	912.9	39.3	1,039.69	26.1	16.6	377.21
Health	810.1	32.4	718.66	21.96	565.7	37.8	847.96	244.4	20.0	419.45
Social science, education, government service and religion	1,145.9	33.7	821.39	24.33	897.1	38.3	938.40	248.8	17.1	399.52
Art, culture, recreation and sport	291.2	30.1	603.32	18.72	194.2	38.7	808.52	96.9	12.7	192.05
Sales and service	3,593.6	30.5	413.08	12.57	2,251.6	38.6	562.75	1,342.0	16.8	161.96
Trades, transport and equipment operators	1,919.8	40.0	762.03	18.86	1,787.2	41.7	801.37	132.7	17.5	232.00
Occupations unique to primary industry	226.8	42.5	714.92	16.39	199.9	46.2	788.34	26.9	14.6	169.30
Occupations unique to processing, manufacturing and utilities	1,058.7	39.2	654.82	16.52	1,007.4	40.3	677.88	51.3	17.4	202.05

Note: Related CANSIM tables 282-0023, 282-0069, 282-0073

Table 8

Regional unemployment rates used by the Employment Insurance Program,¹ seasonally adjusted, 3 month moving average

Region	Effective from January 8, 2006 to February 11, 2006
	Unemployment rate
	Percent
Newfoundland and Labrador	
01. St. John's	8.3
02. Newfoundland and Labrador	19.8
Prince Edward Island	
03. Prince Edward Island	11.0
Nova Scotia	
04. Eastern Nova Scotia	14.9
05. Western Nova Scotia	9.3
06. Halifax	5.5
New Brunswick	
07. Fredericton-Moncton-Saint John	7.6
08. Madawaska-Charlotte ²	11.5
09. Restigouche-Albert	15.5
Quebec	
10. Gaspésie-Îles-de-la-Madeleine	16.2
11. Québec	5.0
12. Trois-Rivières	9.0
13. South Central Quebec	5.7
14. Sherbrooke	7.0
15. Montérégie	6.4
16. Montréal	9.3
17. Central Quebec	8.1
18. Northwestern Quebec	10.3
19. Bas-Saint-Laurent-Côte-Nord ³	11.0
20. Gatineau	6.0
21. Saguenay	10.0
Ontario	
22. Ottawa	5.5
23. Eastern Ontario	7.3
24. Kingston	4.6
25. Central Ontario	6.0
26. Oshawa	6.6
27. Toronto	6.4
28. Hamilton	6.1
29. St. Catharines	7.0
30. London	6.9
31. Niagara	8.6
32. Windsor	6.6
33. Kitchener	5.8
34. Huron	7.4
35. South Central Ontario	5.3
36. Sudbury	7.9
37. Thunder Bay	6.3
38. Northern Ontario	9.9
Manitoba	
39. Winnipeg	4.4
40. Southern Manitoba	5.5
41. Northern Manitoba	23.0

See footnotes at the end of the table.

Table 8 – continued

Regional unemployment rates used by the Employment Insurance Program,¹ seasonally adjusted, 3 month moving average

Region	Effective from January 8, 2006 to February 11, 2006
	Unemployment rate
	Percent
Saskatchewan	
42. Regina	5.1
43. Saskatoon	5.5
44. Southern Saskatchewan	6.4
45. Northern Saskatchewan	15.1
Alberta	
46. Calgary	4.4
47. Edmonton	4.5
48. Northern Alberta	7.1
49. Southern Alberta	4.9
British Columbia	
50. Southern Interior British Columbia	6.4
51. Abbotsford	5.1
52. Vancouver	4.6
53. Victoria	5.0
54. Southern Coastal British Columbia	7.1
55. Northern British Columbia	9.6
Territories	
56. Yukon Territory ⁴	25.0
57. Northwest Territories ⁴	25.0
58. Nunavut ⁴	25.0

1. The boundaries of these regions are determined by Human Resources and Skills Development Canada (HRSDC). For geographic descriptions and maps of employment insurance regions, see the HRSDC website:<http://www14.hrdc-drhc.gc.ca/ei-ae/canadaei.htm>.
2. This unemployment rate has been determined using a transition formula prescribed in the EI Regulations. For further information, see: http://www.hrsdc.gc.ca/en/cs/comm/news/2000/000913a_e.shtml.
3. This unemployment rate has been determined using a transition formula prescribed in the EI Regulations. For further information, see: http://www.hrsdc.gc.ca/en/cs/comm/news/2000/000913b_e.shtml.
4. This rate is provided by Human Resources and Skills Development Canada.

Data quality

About the Labour Force Survey

The statistics contained in this report are based on information obtained through a sample survey of 53,000 representative households across the country. The Labour Force Survey, started in November 1945, was taken at quarterly intervals until November 1952. It has been carried out monthly since then. The information generated by the survey has expanded considerably over the years with a major redesign of the survey content in 1976 and again in 1997, and provides a rich and detailed picture of the Canadian labour market.

The sample used in the Labour Force Survey has been designed to represent all persons in the population 15 years of age and over residing in the provinces of Canada, with the exception of the following: persons living on Indian reserves, full-time members of the armed forces and people living in institutions (for example, inmates of penal institutions and patients in hospitals or nursing homes who have resided in the institution for more than six months). Monthly estimates of employment, unemployment and persons not in the labour force refer to the specific week covered by the survey each month, normally the week containing the 15th day.

Definitions and explanations

The **labour force** is composed of those members of the civilian non-institutional population 15 years of age and over who, during the reference week, were employed or unemployed.

Employed persons are those who, during the reference week:

- (a) did any work at all
- (b) had a job but were not at work

A person is considered to be **full-time** if his/her usual hours at the main job are greater than 29 hours per week. When the number of hours worked at the main job is usually less than 30 hours per week then he/she is considered to be **part-time**.

Unemployed persons are those who, during the reference week:

- (a) were without work, had actively looked for work in the past four weeks (ending with reference week), and were available for work;
- (b) had not actively looked for work in the past four weeks but were on temporary layoff and were available for work;
- (c) had not actively looked for work in the past four weeks but had a new job to start in four weeks or less from the reference week, and were available for work.

Persons in the civilian non-institutional population 15 years of age and over who, during the reference week, were neither employed nor unemployed are classified as **not in the labour force**.

The **unemployment rate** represents the number of unemployed persons expressed as a percentage of the labour force. The unemployment rate for a particular group (age, sex, etc.) is the number unemployed in that group expressed as a percentage of the labour force for that group.

The **participation rate** represents the labour force expressed as a percentage of the population 15 years of age and over. The participation rate for a particular group (age, sex, etc.) is the labour force in that group expressed as a percentage of the population for that group.

The **employment rate (formerly the employment/population ratio)** represents the number of persons employed expressed as a percentage of the population 15 years of age and over. The employment rate for a particular group (age, sex, etc.) is the number employed in that group expressed as a percentage of the population for that group.

The **part-time rate** represents the number of persons employed part-time expressed as a percentage of the employed. The part-time rate for a particular group (age, sex, etc.) is the number employed part-time in that group expressed as a percentage of the employed for that group.

All geographic regions are based on the 2001 Census boundaries.

Seasonal adjustment

Fluctuations in economic time series are caused by seasonal, cyclical and irregular movements. A seasonally adjusted series is one from which seasonal movements have been eliminated. Seasonal movements are defined as those which are caused by regular annual events such as climate, holidays, vacation periods and cycles related to crops, production and retail sales associated with Christmas and Easter. The seasonally adjusted series contains irregular as well as longer-term cyclical fluctuations.

The seasonally adjusted series are revised each year to take into account current data and to generate new forecast factors for the next twelve months. The data are therefore subject to slight revisions in future issues of this publication.

Sampling error

Estimates in this publication are based on the Labour Force Survey, a monthly survey of approximately 53,000 households across Canada. Because they are based on a sample survey, the estimates are subject to sampling error. Changes in the level of any estimates between two months can be the result of a true change or sampling variability. In most tables in this publication an indicator of the sampling error is provided. Two thirds of the time, a change greater than the sampling error indicates a real change. Movements in estimates that are smaller than the sampling error are less likely to reflect a real change and more likely to be due to sampling variability. While the above is true for monthly movements, one can have more confidence in a series of consecutive movements in the same direction, even though some of the monthly movements may be smaller than the sampling error.

In November 2004, the Labour Force Survey implemented a new survey design to ensure the highest possible quality in monthly labour market estimates. This new sampling plan may have an impact on standard errors. The standard errors in this publication were derived using the old sample plan. The program to compute standard errors under the new design is now being developed. Even though we are expecting the standard errors under the new plan to be similar to the ones actually available in this publication, we ask users to be cautious in using the standard errors in this publication.

For more detailed information about the Labour Force Survey, see the following documents:

- Overview of the Labour Force Survey
- Guide to the Labour Force Survey (71-543-GIE)
- Data quality statement
- Methodology of the Canadian Labour Force Survey (71-526-XPB)