



Catalogue no. 71-001-XIE

Labour Force Information

Not for release before 7 A.M. E.S.T.

Friday, November 3, 2006



October 8 to 14, 2006



Statistics
Canada

Statistique
Canada

Canada

How to obtain more information

Specific inquiries about this product and related statistics or services should be directed to: Labour Force Survey Program, Labour Statistics Division, Statistics Canada, Ottawa, Ontario, K1A 0T6 (telephone: (613) 951-4090, toll free number: 1 866 873-8788, fax: (613) 951-2869 or by e-mail address: labour@statcan.ca).

For information on the wide range of data available from Statistics Canada, you can contact us by calling one of our toll free numbers. You can also contact us by e-mail or by visiting our website at www.statcan.ca.

National inquiries line **1 800 263-1136**

National telecommunications device for the hearing impaired **1 800 363-7629**

Depository Services Program inquiries **1 800 700-1033**

Fax line for Depository Services Program **1 800 889-9734**

E-mail inquiries infostats@statcan.ca

Website www.statcan.ca

Information to access the product

This product, Catalogue no. 71-001-XIE, is available for free in electronic format. To obtain a single issue, visit our website at www.statcan.ca and select Publications.

Standards of service to the public

Statistics Canada is committed to serving its clients in a prompt, reliable and courteous manner and in the official language of their choice. To this end, the Agency has developed *standards of service* which its employees observe in serving its clients. To obtain a copy of these service standards, please contact Statistics Canada toll free at 1 800 263-1136. The service standards are also published on www.statcan.ca under About us > Providing services to Canadians.



Statistics Canada
Labour Statistics Division
Labour Force Survey Program

Labour Force Information

Not for release before 7 A.M. E.S.T.

Friday, November 3, 2006

October 8 to 14, 2006

Published by authority of the Minister responsible for Statistics Canada

© Minister of Industry, 2006

All rights reserved. The content of this electronic publication may be reproduced, in whole or in part, and by any means, without further permission from Statistics Canada, subject to the following conditions: that it be done solely for the purposes of private study, research, criticism, review or newspaper summary, and/or for non-commercial purposes; and that Statistics Canada be fully acknowledged as follows: Source (or "Adapted from", if appropriate): Statistics Canada, year of publication, name of product, catalogue number, volume and issue numbers, reference period and page(s). Otherwise, no part of this publication may be reproduced, stored in a retrieval system or transmitted in any form, by any means—electronic, mechanical or photocopy—or for any purposes without prior written permission of Licensing Services, Client Services Division, Statistics Canada, Ottawa, Ontario, Canada K1A 0T6.

November 2006

Catalogue no. 71-001-XIE

ISSN 1492-5478

Frequency: Monthly

Ottawa

La version française de cette publication est disponible sur demande (n° 71-001-XIF au catalogue).

Note of appreciation

Canada owes the success of its statistical system to a long standing partnership between Statistics Canada, the citizens of Canada, its businesses, governments and other institutions. Accurate and timely statistical information could not be produced without their continued cooperation and goodwill.

User information

Symbols

The following standard symbols are used in Statistics Canada publications:

- . not available for any reference period
- .. not available for a specific reference period
- ... not applicable
- 0 true zero or a value rounded to zero
- 0^s value rounded to 0 (zero) where there is a meaningful distinction between true zero and the value that was rounded
- p preliminary
- r revised
- x suppressed to meet the confidentiality requirements of the *Statistics Act*
- E use with caution
- F too unreliable to be published

Special requests (\$)

Custom tabulations can be arranged on an ad hoc or regular basis. This service enables you to specify tables and time series to meet your own requirements. The cost varies according to the request. For more information, contact us toll-free at 1-866-873-8788 or e-mail us at labour@statcan.ca.

Schedule of LFS releases

Reference period - Week ending	Release date
January 21, 2006	February 10, 2006
February 18, 2006	March 10, 2006
March 18, 2006	April 7, 2006
April 15, 2006	May 5, 2006
May 20, 2006	June 9, 2006
June 17, 2006	July 7, 2006
July 15, 2006	August 4, 2006
August 19, 2006	September 8, 2006
September 16, 2006	October 6, 2006
October 14, 2006	November 3, 2006
November 11, 2006	December 1, 2006
December 9, 2006	January 5, 2007

Latest LFS release in *The Daily* (free)

Table of contents

Highlights	5
Analysis — October 2006	6
Charts	
1. Employment and unemployment rates, Canada, seasonally adjusted	5
2. Employment and unemployment indicators, Canada, seasonally adjusted	8
3. Employment and unemployment indicators, Canada, seasonally adjusted	9
4. Index of employment by industry, Canada, seasonally adjusted, January, 2003=100	10
5. Index of employment by industry, Canada, seasonally adjusted, January 2003 = 100	11
6. Index of employment by industry, Canada, seasonally adjusted, January 2003 = 100	12
7. Index of employment by province, seasonally adjusted, January 2003 = 100	13
8. Index of employment by province, seasonally adjusted, January 2003 = 100	14
Related products	15
Statistical tables	
1 Labour force characteristics by age and sex, Canada, seasonally adjusted	23
2 Employment by class of worker and industry, Canada, seasonally adjusted	24
3 Labour force characteristics by province, seasonally adjusted	25
4 Selected labour force characteristics (seasonally adjusted)	27
4-1 Newfoundland and Labrador	27
4-2 Prince Edward Island	28
4-3 Nova Scotia	29
4-4 New Brunswick	30
4-5 Quebec	31
4-6 Ontario	32
4-7 Manitoba	33
4-8 Saskatchewan	34
4-9 Alberta	35
4-10 British Columbia	36
5 Labour force characteristics by census metropolitan area (seasonally adjusted)	37
5-1 3 month moving average	37
5-2 Monthly	42

Table of contents – continued

6	Labour force characteristics	43
6-1	by province and economic region, unadjusted for seasonality, 3 month moving average ending in October 2005 and October 2006	43
6-2	by territories, unadjusted for seasonality, 3 month moving average ending in October 2005 and October 2006	48
7	Average usual hours and wages of employees by selected characteristics, Canada, unadjusted for seasonality	49
8	Regional unemployment rates used by the Employment Insurance Program, seasonally adjusted, 3 month moving average	50
	Data quality	52

Highlights

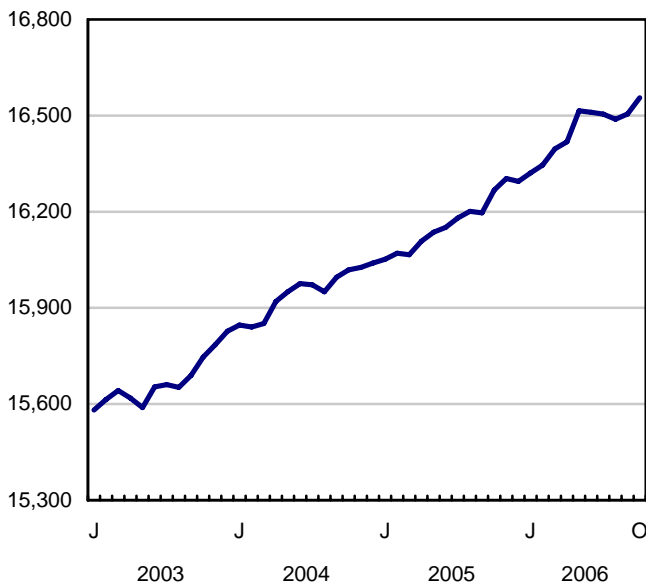
October 2006

Employment increased by an estimated 51,000 in October, following four months of little change. The unemployment rate declined 0.2 percentage points to 6.2%. Since the beginning of the year, employment has increased by 261,000 (+1.6%).

Chart 1
Employment and unemployment rates, Canada, seasonally adjusted

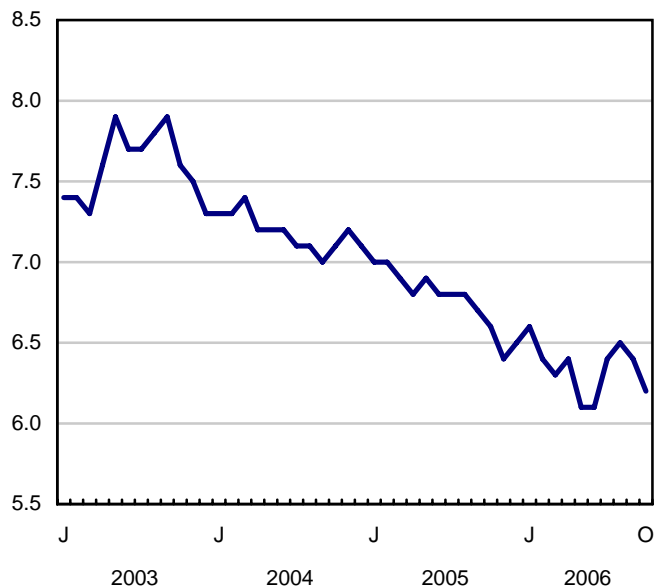
Employment

thousands



Unemployment rate

percentage



Analysis — October 2006

Employment increased by an estimated 51,000 in October, following four months of little change. The unemployment rate declined 0.2 percentage points to 6.2%. Since the beginning of the year, employment has increased by 261,000 (+1.6%).

Full-time employment showed continued strength, jumping by 68,000 in October. For the first 10 months of 2006, full-time employment increased by 1.9% or 259,000 workers.

Full-time growth for youth was strong in October (+36,000), with one-third of the gains coming from Alberta.

Nationally, the unemployment rate for adult women set a record low, dropping to 4.9%, while for adult men it edged down to 5.4%.

The western provinces of Alberta and Saskatchewan continued to outpace the rest of the country in employment growth so far this year. In Alberta alone, employment for the month increased by 23,000 while the unemployment rate hit a three-decade low of 3.0%.

Manufacturing continued its downward trend in October. So far in 2006, there are 83,000 fewer factory workers across Canada, with Central Canada being particularly hard hit.

In October, there were also losses in professional, scientific and technical services and agriculture; however, these declines were more than offset by increases in several industries including education; construction; business, building and other support services; as well as public administration.

Construction employment increased by 21,000 in October—with two-thirds of the growth coming from Alberta. Since the beginning of 2006, the national level of employment in the industry has remained relatively flat, following two years of rapid growth.

More Albertan youths working

Following four months of weakness, youth employment jumped by 34,000 in October, all in full time. Almost half of the employment growth came from Alberta, pushing the youth employment rate up 2.9 percentage points to 67.5%, the highest rate in the country.

Adult women continued to add to full-time employment this month, outpacing the rate of job growth for both adult men and youth so far this year.

No rest for the west

Alberta's unemployment rate fell 0.5 percentage points to 3.0% in October, the lowest in 30 years, driven by strong gains in employment (+23,000). The unemployment rate for adult men plummeted to 1.8%. The last time it was lower was in July 1976 at 1.5%. So far in 2006, 102,000 workers (+5.7%) were added to the Alberta labour market, accounting for 39.2% of the growth in Canada's employment.

In October, Alberta's gains came from construction, educational services and natural resources. Over the first 10 months of 2006, employment in natural resources increased 15.6%, while construction rose by a similar 14.3%.

British Columbia added 13,000 more workers in October, bringing total gains since the start of the year to 47,000 or 2.2%. The unemployment rate remains among the lowest in the country at 4.6%. Increases over the

first 10 months of 2006 occurred in a number of industries, including business, building and other support services, health care and social assistance, and educational services.

Employment in Saskatchewan (+3,000) continued to increase in October. Since the start of the year, 21,000 workers (+4.3%) have been added, mostly in trade, accommodation and food services, and construction. This rate of growth is second only to Alberta. The unemployment rate declined 0.4 percentage points to 3.9%, a rate not seen since July 1981.

In the Atlantic region, New Brunswick's employment increased by 3,000 in October, regaining some of the losses from the previous four months. So far in 2006, employment has declined 0.7%, with weaknesses in trade, health and social assistance, as well as educational services.

Although there was little increase in October, Newfoundland and Labrador's employment has grown 4.0% (+9,000) since the start of 2006. Health care and social assistance, educational services, as well as natural resources were all strong contributors to this year's growth.

Manufacturing woes continue in Central Canada

Manufacturing employment continued its downward trend in October (-15,000) with the lion's share of the losses in Ontario and Quebec. Over the first 10 months of 2006, losses have totaled 83,000 or -3.8% across Canada.

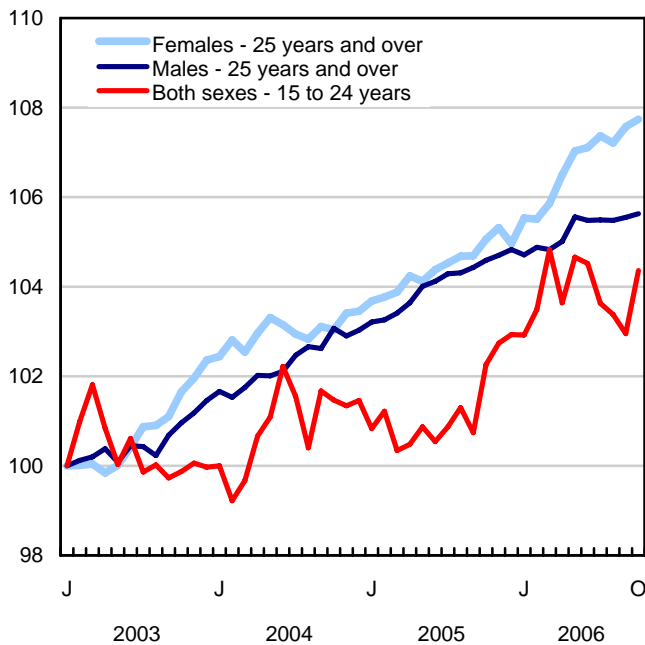
In Ontario, despite losses in manufacturing (-18,000), overall employment was little changed in October. Employment gains in finance, insurance, real estate and leasing, as well as educational services made up for the losses sustained in the manufacturing industry. The unemployment rate declined to 6.4% in October, the result of fewer people looking for work.

In Quebec, public administration as well as business, building and other support services all gained more workers for the month, which offset the drop in manufacturing (-8,000). In October, the unemployment rate edged down to a 30-year low of 7.7%.

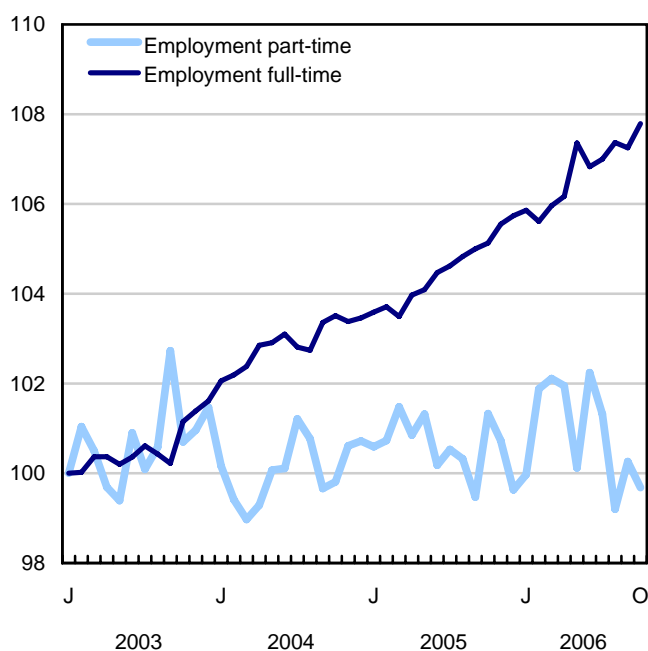
Employment growth in both Quebec and Ontario, so far in 2006, is 0.8%, only half the national rate.

Chart 2
Employment and unemployment indicators, Canada, seasonally adjusted

Employment index, January 2003=100



Employment index, January 2003=100



Employment index, January 2003=100

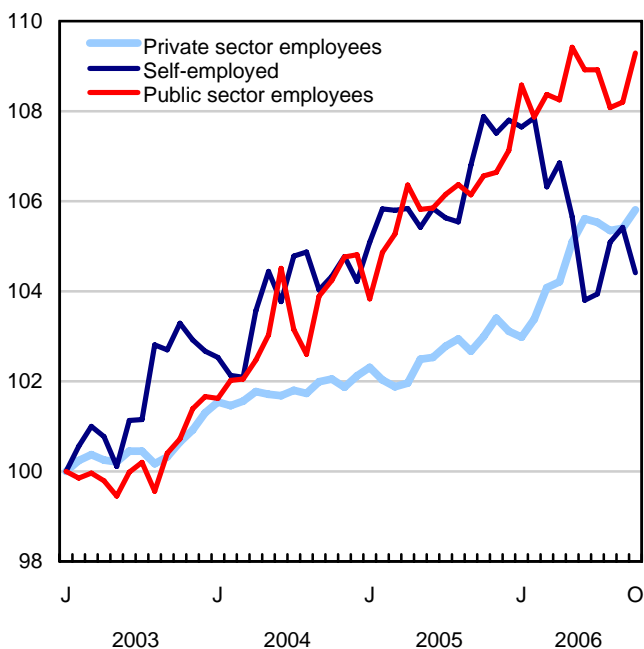
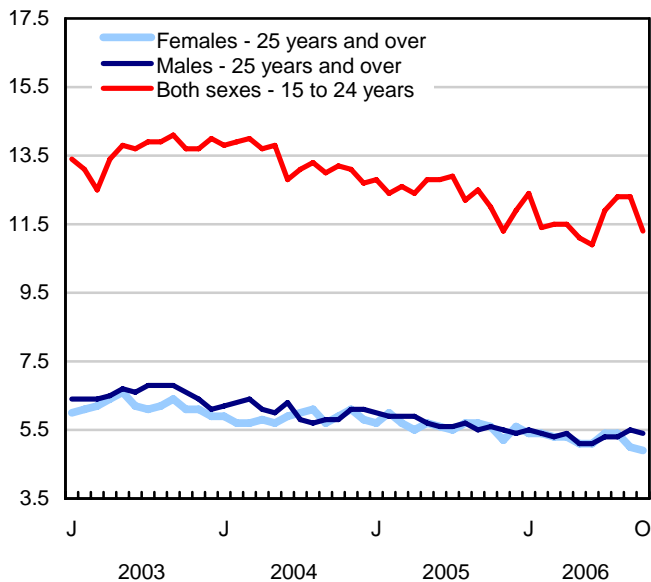
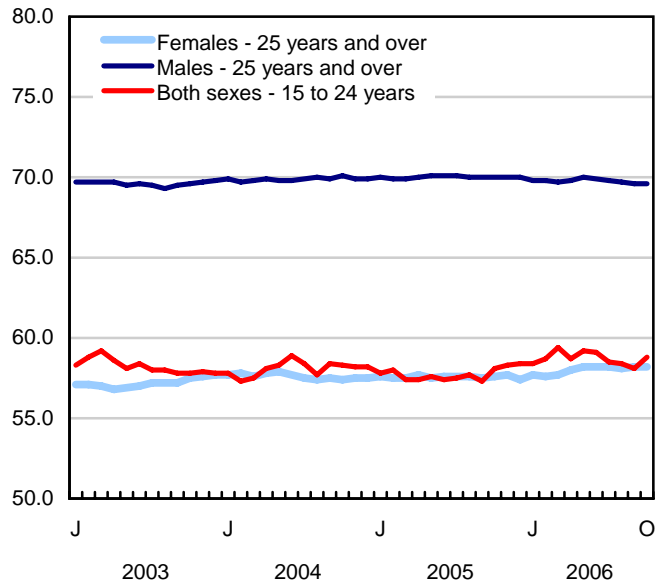


Chart 3
Employment and unemployment indicators, Canada, seasonally adjusted

Unemployment rate (%)



Employment rate (%)



Participation rate (%)

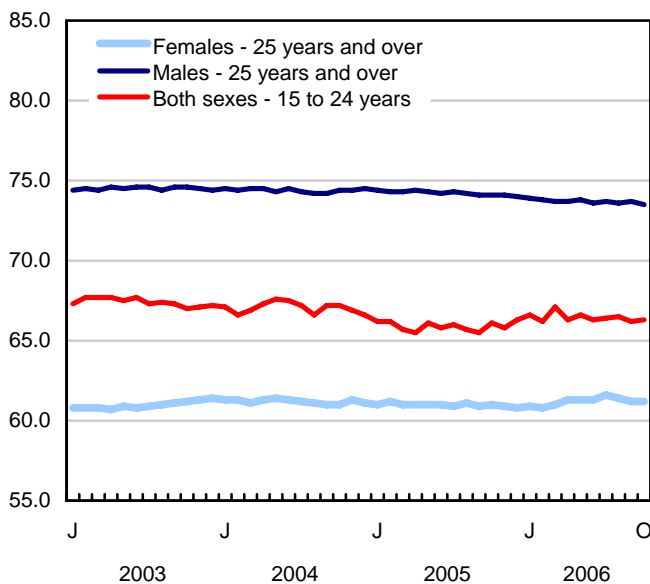


Chart 4
Index of employment by industry, Canada, seasonally adjusted, January, 2003=100

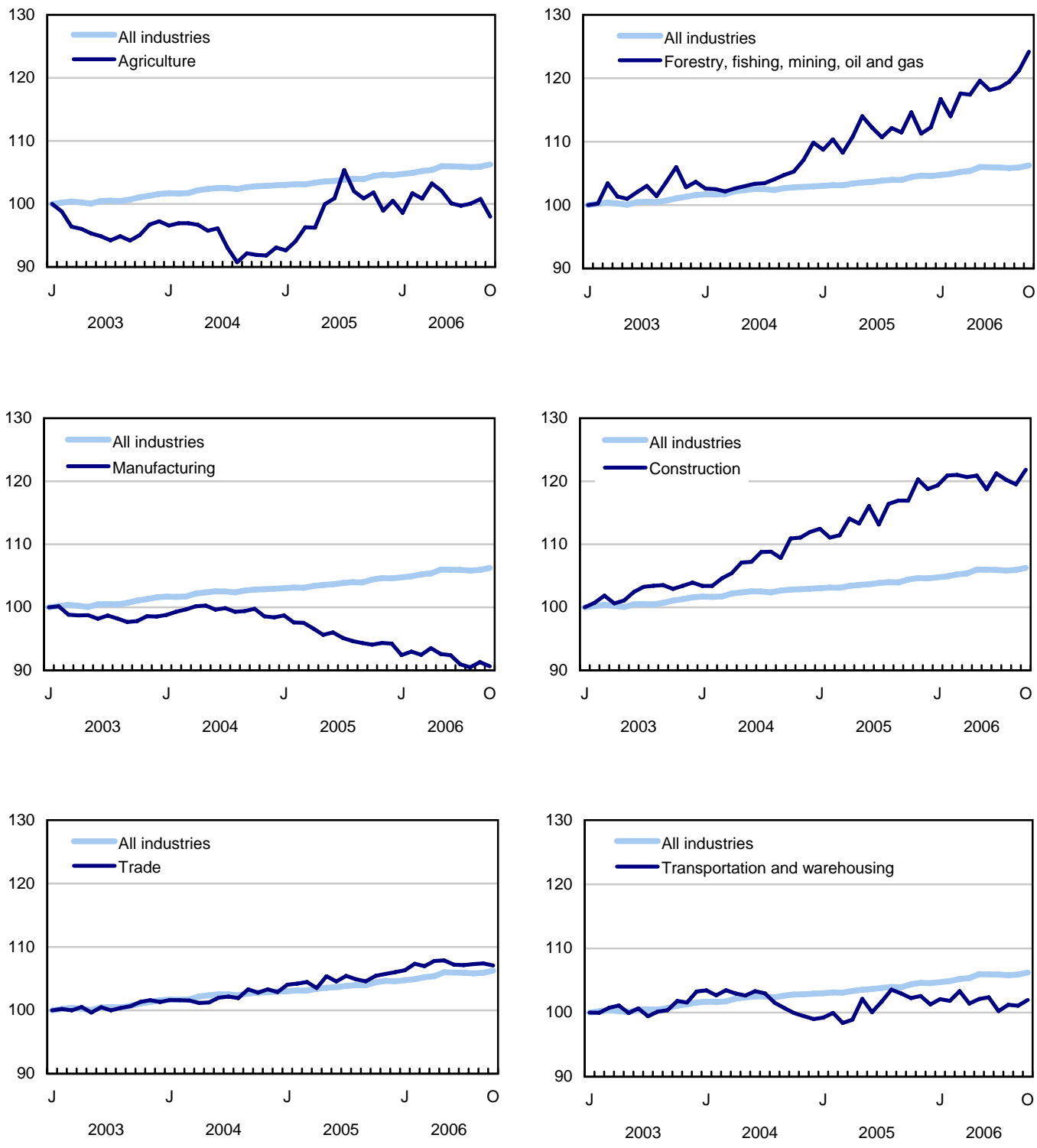


Chart 5
Index of employment by industry, Canada, seasonally adjusted, January 2003 = 100

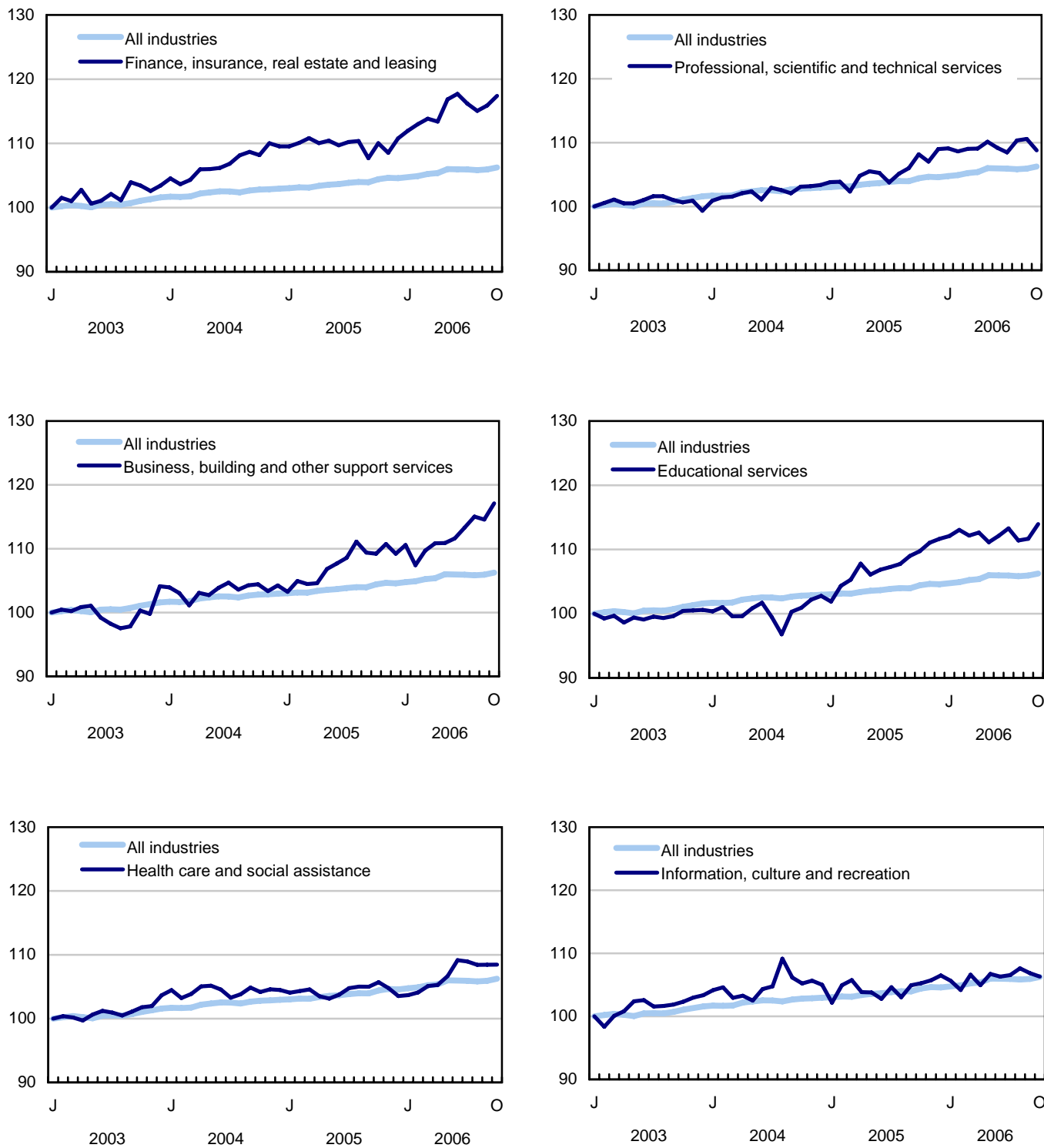


Chart 6
Index of employment by industry, Canada, seasonally adjusted, January 2003 = 100

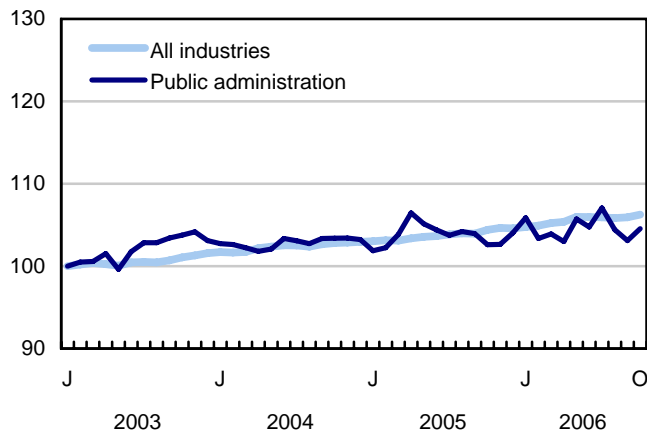
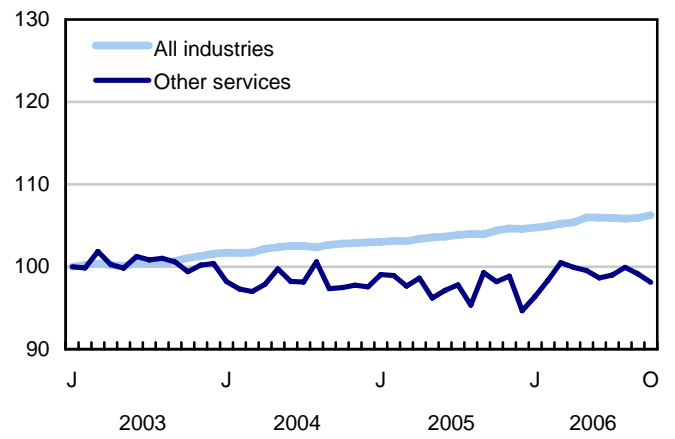
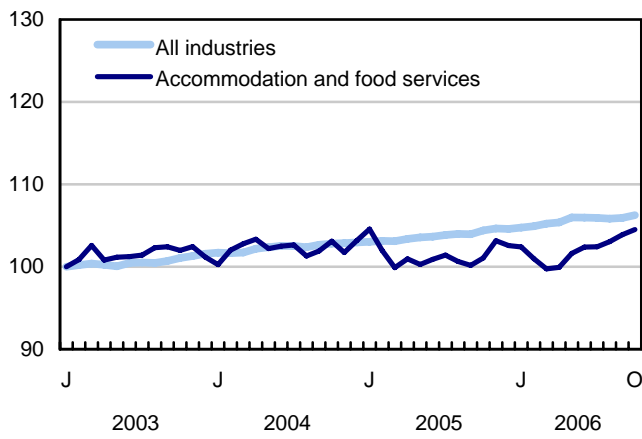


Chart 7
Index of employment by province, seasonally adjusted, January 2003 = 100

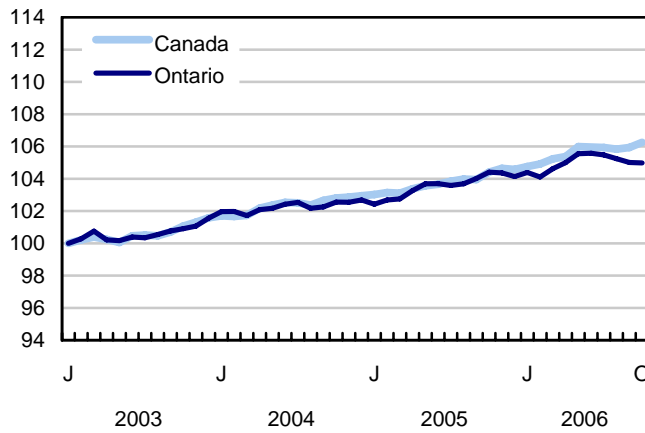
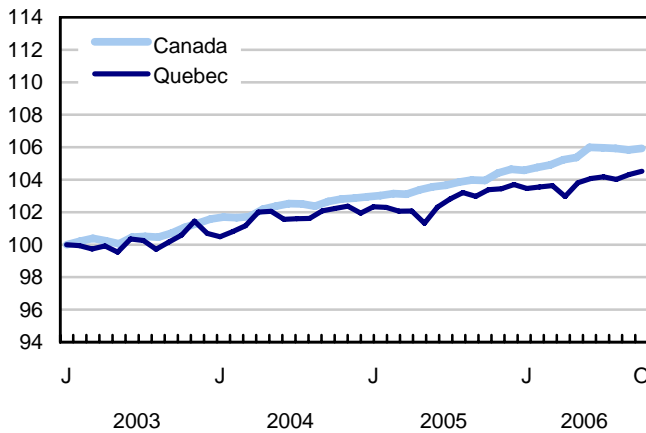
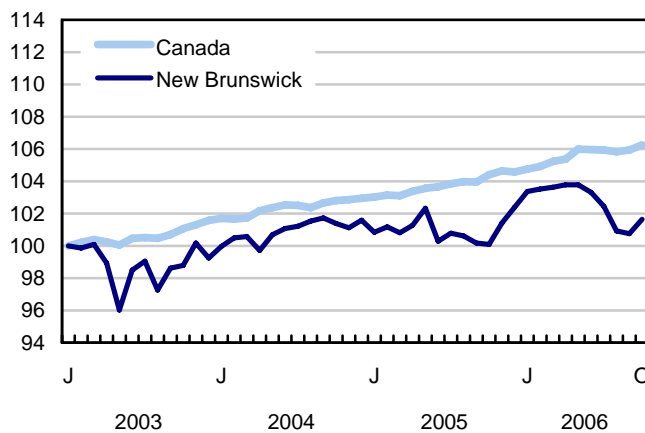
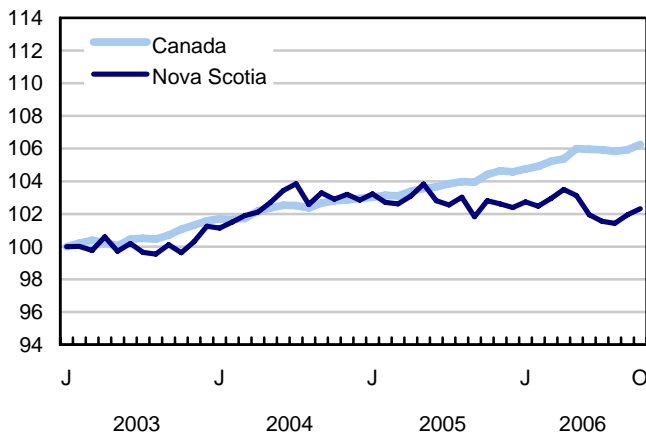
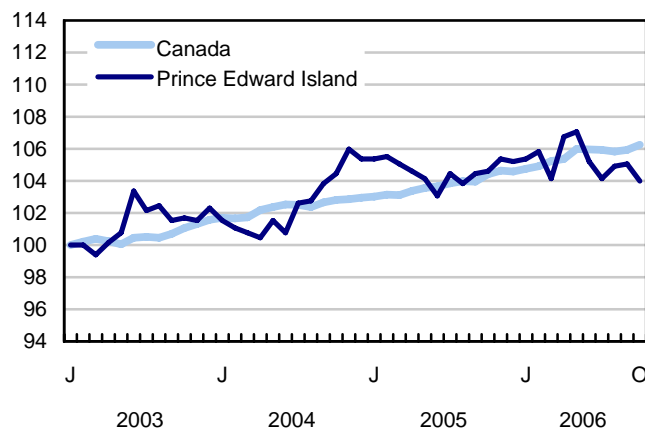
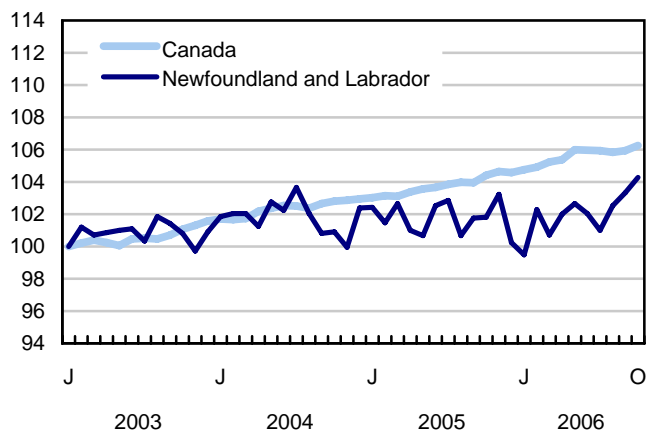
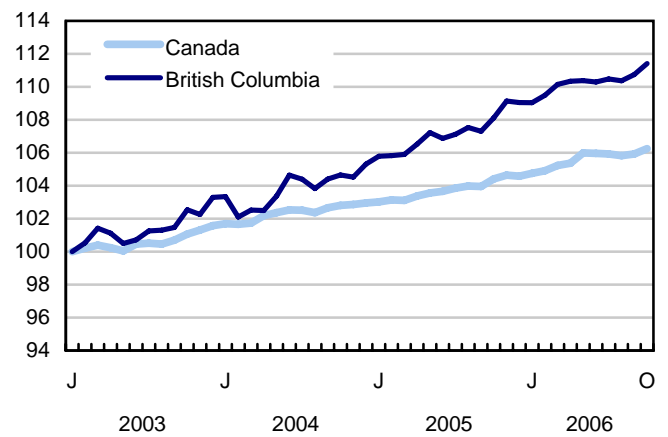
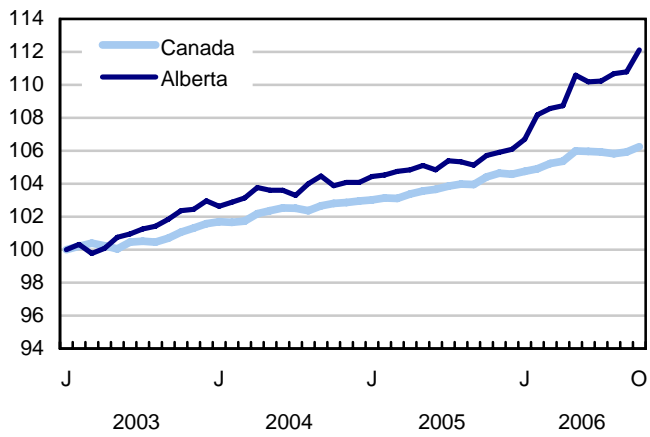
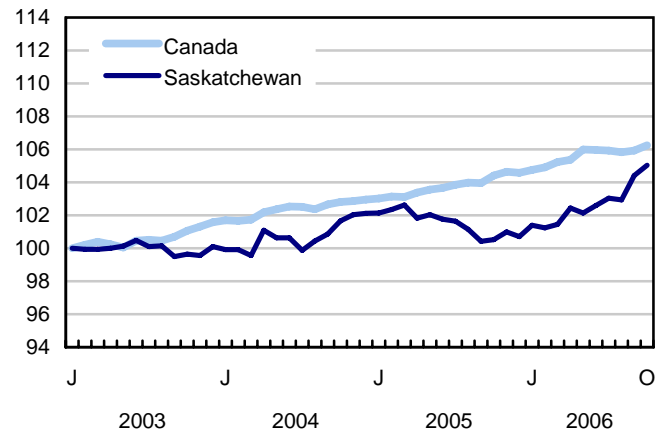
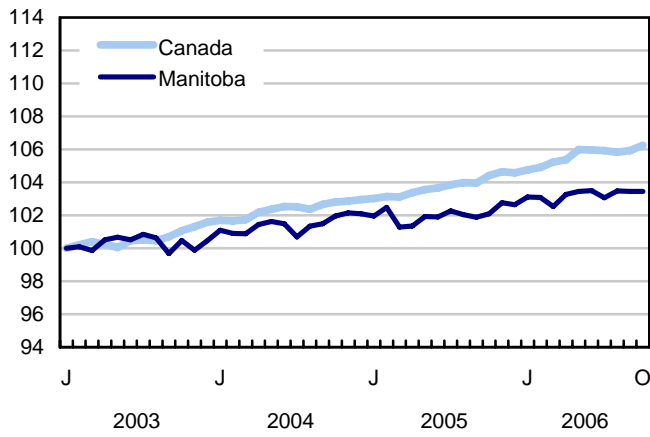


Chart 8
Index of employment by province, seasonally adjusted, January 2003 = 100



Related products

Selected publications from Statistics Canada

71-222-X	The Canadian labour market at a glance
71-526-X	Methodology of the Canadian Labour Force Survey
71-543-G	Guide to the Labour Force Survey
71-544-X	Labour Force Survey products and services.
71-587-X	Aboriginal peoples living off-reserve in Western Canada: estimates from the Labour Force Survey
71F0004X	Labour force historical review
71F0031X	Improvements to the Labour Force Survey (LFS)
71M0001X	Labour Force Survey microdata file
75-001-X	Perspectives on labour and income

Selected CANSIM tables from Statistics Canada

282-0001	Labour force survey estimates (LFS), by sex and detailed age group
282-0002	Labour force survey estimates (LFS), by sex and detailed age group
282-0003	Labour force survey estimates (LFS), by educational attainment, sex and age group
282-0004	Labour force survey estimates (LFS), by educational attainment, sex and age group
282-0005	Labour force survey estimates (LFS), by full- and part-time students during school months, sex and age group
282-0006	Labour force survey estimates (LFS), by students during summer months, sex and age group
282-0007	Labour force survey estimates (LFS), by North American Industry Classification System (NAICS), sex and age group
282-0008	Labour force survey estimates (LFS), by North American Industry Classification System (NAICS), sex and age group
282-0009	Labour force survey estimates (LFS), by National Occupational Classification for Statistics (NOC-S) and sex

282-0010	Labour force survey estimates (LFS), by National Occupational Classification for Statistics (NOC-S) and sex
282-0011	Labour force survey estimates (LFS), employment by class of worker, North American Industry Classification System (NAICS) and sex
282-0012	Labour force survey estimates (LFS), employment by class of worker, North American Industry Classification System (NAICS) and sex
282-0013	Labour force survey estimates (LFS), part-time employment by reason for part-time work, sex and age group
282-0014	Labour force survey estimates (LFS), part-time employment by reason for part-time work, sex and age group
282-0015	Labour force survey estimates (LFS), by usual hours worked, main or all jobs, sex and age group
282-0016	Labour force survey estimates (LFS), by usual hours worked, main or all jobs, sex and age group
282-0017	Labour force survey estimates (LFS), by actual hours worked, main or all jobs, sex and age group
282-0018	Labour force survey estimates (LFS), by actual hours worked, main or all jobs, sex and age group
282-0019	Labour force survey estimates (LFS), by usual hours worked, class of worker, North American Industry Classification System (NAICS) and sex
282-0020	Labour force survey estimates (LFS), by usual hours worked, class of worker, North American Industry Classification System (NAICS) and sex
282-0021	Labour force survey estimates (LFS), by actual hours worked, class of worker, North American Industry Classification System (NAICS) and sex
282-0022	Labour force survey estimates (LFS), by actual hours worked, class of worker, North American Industry Classification System (NAICS) and sex
282-0023	Labour force survey estimates (LFS), by usual hours worked, class of worker, National Occupational Classification for Statistics (NOC-S) and sex
282-0024	Labour force survey estimates (LFS), by usual hours worked, class of worker, National Occupational Classification for Statistics (NOC-S) and sex
282-0025	Labour force survey estimates (LFS), by actual hours worked, class of worker, National Occupational Classification for Statistics (NOC-S) and sex
282-0026	Labour force survey estimates (LFS), by actual hours worked, class of worker, National Occupational Classification for Statistics (NOC-S) and sex
282-0027	Labour force survey estimates (LFS), by total and average usual and actual hours worked, main or all jobs, type of work, sex and age group
282-0028	Labour force survey estimates (LFS), by total and average usual and actual hours worked, main or all jobs, type of work, sex and age group
282-0029	Labour force survey estimates (LFS), average days lost for personal reasons per full-time employee by North American Industry Classification System (NAICS), sex and age group

282-0030	Labour force survey estimates (LFS), average days lost for personal reasons per full-time employee by National Occupational Classification for Statistics (NOC-S), sex and age group
282-0031	Labour force survey estimates (LFS), multiple jobholders by North American Industry Classification System (NAICS), sex and age group
282-0032	Labour force survey estimates (LFS), multiple jobholders by North American Industry Classification System (NAICS), sex and age group
282-0033	Labour force survey estimates (LFS), multiple jobholders by National Occupational Classification for Statistics (NOC-S), sex and age group
282-0034	Labour force survey estimates (LFS), multiple jobholders by National Occupational Classification for Statistics (NOC-S), sex and age group
282-0035	Labour force survey estimates (LFS), multiple jobholders by usual hours worked at main and all jobs
282-0036	Labour force survey estimates (LFS), multiple jobholders by usual hours worked at main and all jobs
282-0037	Labour force survey estimates (LFS), job tenure by type of work, sex and age group
282-0038	Labour force survey estimates (LFS), job tenure by type of work, sex and age group
282-0039	Labour force survey estimates (LFS), job tenure by National Occupational Classification for Statistics (NOC-S) and sex
282-0040	Labour force survey estimates (LFS), job tenure by National Occupational Classification for Statistics (NOC-S) and sex
282-0041	Labour force survey estimates (LFS), job tenure by North American Industry Classification System (NAICS) and sex
282-0042	Labour force survey estimates (LFS), job tenure by North American Industry Classification System (NAICS) and sex
282-0047	Labour force survey estimates (LFS), duration of unemployment by sex and age group
282-0048	Labour force survey estimates (LFS), duration of unemployment by sex and age group
282-0049	Labour force survey estimates (LFS), unemployment by type of work sought and search method, sex and age group
282-0050	Labour force survey estimates (LFS), unemployment by type of work sought and search method, sex and age group
282-0051	Labour force survey estimates (LFS), retirement age by class of worker and sex
282-0052	Labour force survey estimates (LFS), by census metropolitan area, sex and age group, 3-month moving average
282-0053	Labour force survey estimates (LFS), by census metropolitan area, sex and age group
282-0054	Labour force survey estimates (LFS), by economic region and Yukon Territory and Northwest Territories, 3-month moving average
282-0055	Labour force survey estimates (LFS), by economic region and Yukon Territory and Northwest Territories

282-0056	Labour force survey estimates (LFS), employment by census metropolitan area and North American Industry Classification System (NAICS), 3-month moving average
282-0057	Labour force survey estimates (LFS), employment by census metropolitan area and North American Industry Classification System (NAICS)
282-0058	Labour force survey estimates (LFS), employment by census metropolitan area and National Occupational Classification for Statistics (NOC-S), 3-month moving average
282-0059	Labour force survey estimates (LFS), employment by census metropolitan area and National Occupational Classification for Statistics (NOC-S)
282-0060	Labour force survey estimates (LFS), employment by economic region and North American Industry Classification System (NAICS), 3-month moving average
282-0061	Labour force survey estimates (LFS), employment by economic region and North American Industry Classification System (NAICS)
282-0062	Labour force survey estimates (LFS), employment by economic region and National Occupational Classification for Statistics (NOC-S), 3-month moving average
282-0063	Labour force survey estimates (LFS), employment by economic region and National Occupational Classification for Statistics (NOC-S)
282-0064	Labour force survey estimates (LFS), by selected medium-sized cities
282-0069	Labour force survey estimates (LFS), wages of employees by type of work, National Occupational Classification for Statistics (NOC-S), sex and age group
282-0070	Labour force survey estimates (LFS), wages of employees by type of work, National Occupational Classification for Statistics (NOC-S), sex and age group
282-0071	Labour force survey estimates (LFS), wages of employees by type of work, North American Industry Classification System (NAICS), sex and age group
282-0072	Labour force survey estimates (LFS), wages of employees by type of work, North American Industry Classification System (NAICS), sex and age group
282-0073	Labour force survey estimates (LFS), wages of employees by job permanence, union coverage, sex and age group
282-0074	Labour force survey estimates (LFS), wages of employees by job permanence, union coverage, sex and age group
282-0075	Labour force survey estimates (LFS), employees by establishment size, North American Industry Classification System (NAICS), sex and age group
282-0076	Labour force survey estimates (LFS), employees by establishment size, North American Industry Classification System (NAICS), sex and age group
282-0077	Labour force survey estimates (LFS), employees by union coverage, North American Industry Classification System (NAICS), sex and age group
282-0078	Labour force survey estimates (LFS), employees by union coverage, North American Industry Classification System (NAICS), sex and age group
282-0079	Labour force survey estimates (LFS), employees by job permanency, North American Industry Classification System (NAICS), sex and age group

282-0080	Labour force survey estimates (LFS), employees by job permanency, North American Industry Classification System (NAICS), sex and age group
282-0081	Labour force survey estimates (LFS), employees working overtime (weekly) by National Occupational Classification for Statistics (NOC-S), sex and age group
282-0082	Labour force survey estimates (LFS), employees working overtime (weekly) by National Occupational Classification for Statistics (NOC-S), sex and age group
282-0083	Labour force survey estimates (LFS), employees working overtime (weekly) by North American Industry Classification System (NAICS), sex and age group
282-0084	Labour force survey estimates (LFS), employees working overtime (weekly) by North American Industry Classification System (NAICS), sex and age group
282-0085	Labour force survey estimates (LFS), supplementary unemployment rates by sex and age group
282-0086	Labour force survey estimates (LFS), supplementary unemployment rates by sex and age group
282-0087	Labour force survey estimates (LFS), by sex and age group, seasonally adjusted and unadjusted
282-0088	Labour force survey estimates (LFS), employment by North American Industry Classification System (NAICS), seasonally adjusted and unadjusted
282-0089	Labour force survey estimates (LFS), employment by class of worker and sex, seasonally adjusted and unadjusted
282-0090	Labour force survey estimates (LFS), by census metropolitan area, 3-month moving average, seasonally adjusted and unadjusted
282-0091	Labour force survey estimates (LFS), by Montréal, Toronto and Vancouver census metropolitan areas, seasonally adjusted and unadjusted
282-0092	Labour force survey estimates (LFS), actual hours worked by North American Industry Classification System (NAICS), seasonally adjusted
282-0093	Labour force survey estimates (LFS), employment by National Occupational Classification for Statistics (NOC-S), seasonally adjusted
282-0094	Labour force survey estimates (LFS), by North American Industry Classification System (NAICS), Canada, seasonally adjusted
282-0095	Labour force survey estimates (LFS), by full- and part-time students during school months, sex and age group
282-0096	Labour force survey estimates (LFS), by urban and rural areas based on 2001 census boundaries, sex and age group
282-0097	Labour force survey estimates (LFS), by urban and rural areas based on 2001 census boundaries, sex and age group
282-0098	Labour force survey estimates (LFS), employment by urban and rural areas based on 2001 census boundaries, class of worker and North American Industry Classification System (NAICS)
282-0099	Labour force survey estimates (LFS), employment by urban and rural areas based on 2001 census boundaries, class of worker and North American Industry Classification System (NAICS)

Selected surveys from Statistics Canada

3701 Labour Force Survey

Selected tables of Canadian statistics from Statistics Canada

- *Labour force characteristics*
- *Employment by industry*
- *Selected economic indicators, Canada and United States (monthly and quarterly)*
- *Days lost per worker due to illness or disability, by sex, by provinces*
- *Economic indicators, by province and territory (monthly and quarterly)*
- *Labour force and participation rates by sex and age group*
- *Labour force, employed and unemployed, numbers and rates, by provinces*
- *Employment by industry and sex*
- *Full-time and part-time employment by sex and age group*
- *Labour force characteristics by age and sex*
- *Distribution of employed people, by industry, by province*
- *Labour force characteristics, population 15 years and older, by census metropolitan areas*
- *Labour force characteristics, population 15 years and older, by economic regions, by province*
- *Days lost per worker by cause, by provinces*
- *Days lost per worker by industry and sex*
- *People employed, by educational attainment*
- *Reasons for part-time work by sex and age group*
- *Self-employment, historical summary*
- *Employment by age, sex, type of work, class of worker and provinces (monthly)*
- *Employment by major industry groups, seasonally adjusted, by provinces (monthly)*
- *Actual hours worked per week by industry, seasonally adjusted (monthly)*

- *Average hourly wages of employees by selected characteristics and profession, unadjusted data, by provinces (monthly)*
- *Labour force characteristics, seasonally adjusted, by province (monthly)*
- *Labour force characteristics, unadjusted, by province (monthly)*
- *Labour force characteristics, seasonally adjusted, by census metropolitan areas (3 month moving average)*
- *Labour force characteristics, unadjusted, by census metropolitan areas (3 month moving average)*
- *Labour force characteristics, unadjusted, by economic regions (3 month moving average)*

Statistical tables

Table 1
Labour force characteristics by age and sex, Canada, seasonally adjusted

	September 2006	October 2006	S.E. ¹	Change from			Percent change from		
				last month	last December	twelve months ago	last month	last December	twelve months ago
in thousands (except rates)									
Both sexes, 15 years and over									
Population	26,265.5	26,298.9	...	33.4	312.0	370.5	0.1	1.2	1.4
Labour force	17,635.9	17,641.2	27.4	5.3	211.3	218.0	0.0	1.2	1.3
Employment	16,505.0	16,555.5	27.2	50.5	260.8	287.6	0.3	1.6	1.8
Employment full-time	13,549.9	13,617.5	36.0	67.6	259.2	336.2	0.5	1.9	2.5
Employment part-time	2,955.1	2,938.0	32.5	-17.1	1.6	-48.5	-0.6	0.1	-1.6
Unemployment	1,131.0	1,085.7	23.0	-45.3	-49.5	-69.6	-4.0	-4.4	-6.0
Participation rate	67.1	67.1	0.1	0.0	0.0	-0.1
Unemployment rate	6.4	6.2	0.1	-0.2	-0.3	-0.4
Employment rate	62.8	63.0	0.1	0.2	0.3	0.3
Part-time rate	17.9	17.7	0.2	-0.2	-0.3	-0.6
Both sexes, 15 to 24 years									
Population	4,328.2	4,332.1	...	3.9	30.1	36.4	0.1	0.7	0.8
Labour force	2,865.3	2,871.5	16.5	6.2	20.9	33.5	0.2	0.7	1.2
Employment	2,513.1	2,547.4	15.7	34.3	34.9	51.2	1.4	1.4	2.1
Employment full-time	1,422.7	1,458.9	18.0	36.2	52.5	84.8	2.5	3.7	6.2
Employment part-time	1,090.4	1,088.5	18.7	-1.9	-17.6	-33.7	-0.2	-1.6	-3.0
Unemployment	352.2	324.1	13.6	-28.1	-14.1	-17.6	-8.0	-4.2	-5.2
Participation rate	66.2	66.3	0.4	0.1	0.0	0.2
Unemployment rate	12.3	11.3	0.4	-1.0	-0.6	-0.7
Employment rate	58.1	58.8	0.4	0.7	0.4	0.7
Part-time rate	43.4	42.7	0.7	-0.7	-1.3	-2.2
Men, 25 years and over									
Population	10,713.9	10,728.7	...	14.8	140.8	166.7	0.1	1.3	1.6
Labour force	7,898.8	7,889.9	14.0	-8.9	59.2	61.6	-0.1	0.8	0.8
Employment	7,460.6	7,466.4	15.2	5.8	56.9	73.9	0.1	0.8	1.0
Employment full-time	6,979.5	6,991.2	19.6	11.7	62.4	83.0	0.2	0.9	1.2
Employment part-time	481.1	475.2	15.3	-5.9	-5.5	-9.1	-1.2	-1.1	-1.9
Unemployment	438.2	423.6	13.0	-14.6	2.4	-12.2	-3.3	0.6	-2.8
Participation rate	73.7	73.5	0.1	-0.2	-0.5	-0.6
Unemployment rate	5.5	5.4	0.2	-0.1	0.0	-0.2
Employment rate	69.6	69.6	0.1	0.0	-0.4	-0.4
Part-time rate	6.4	6.4	0.2	-0.1	-0.1	-0.2
Women, 25 years and over									
Population	11,223.4	11,238.1	...	14.7	141.2	167.4	0.1	1.3	1.5
Labour force	6,871.8	6,879.8	15.9	8.0	131.3	122.9	0.1	1.9	1.8
Employment	6,531.3	6,541.8	15.4	10.5	169.1	162.7	0.2	2.7	2.6
Employment full-time	5,147.7	5,167.4	23.0	19.7	144.3	168.4	0.4	2.9	3.4
Employment part-time	1,383.6	1,374.4	21.3	-9.2	24.8	-5.6	-0.7	1.8	-0.4
Unemployment	340.6	338.0	12.6	-2.6	-37.9	-39.8	-0.8	-10.1	-10.5
Participation rate	61.2	61.2	0.1	0.0	0.4	0.2
Unemployment rate	5.0	4.9	0.2	-0.1	-0.7	-0.7
Employment rate	58.2	58.2	0.1	0.0	0.8	0.6
Part-time rate	21.2	21.0	0.3	-0.2	-0.2	-0.6
Both sexes, 25 to 54 years									
Population	14,254.2	14,264.6	...	10.4	84.6	102.8	0.1	0.6	0.7
Labour force	12,290.0	12,284.2	20.9	-5.8	66.9	71.8	0.0	0.5	0.6
Employment	11,641.0	11,648.4	21.9	7.4	109.9	126.6	0.1	1.0	1.1
Unemployment	649.0	635.8	17.3	-13.2	-43.0	-54.7	-2.0	-6.3	-7.9
Participation rate	86.2	86.1	0.1	-0.1	-0.1	-0.1
Unemployment rate	5.3	5.2	0.1	-0.1	-0.4	-0.5
Employment rate	81.7	81.7	0.2	0.0	0.3	0.3

1. Average standard error of change in two consecutive months (see "Sampling Errors" in Data Quality for further explanations).

Note(s): Related CANSIM table 282-0087

Table 2
Employment by class of worker and industry, Canada, seasonally adjusted

	September 2006	October 2006	S.E. ¹	Change from			Percent change from		
				last month	last December	twelve months ago	last month	last December	twelve months ago
in thousands									
Class of worker									
Employees	14,013.2	14,087.6	32.0	74.4	340.9	369.6	0.5	2.5	2.7
Self-employed ²	2,491.8	2,467.9	22.0	-23.9	-80.1	-82.0	-1.0	-3.1	-3.2
Public/private sector employees									
Public sector employees	3,190.3	3,222.4	20.8	32.1	63.7	80.4	1.0	2.0	2.6
Private sector employees	10,822.9	10,865.2	33.2	42.3	277.3	289.2	0.4	2.6	2.7
Industry	16,505.0	16,555.5	27.2	50.5	260.8	287.6	0.3	1.6	1.8
Goods-producing sector	3,967.6	3,977.0	24.0	9.4	-28.9	-17.2	0.2	-0.7	-0.4
Agriculture	348.7	339.0	7.1	-9.7	-8.7	-13.3	-2.8	-2.5	-3.8
Forestry, fishing, mining, oil and gas	333.4	341.5	6.2	8.1	32.8	26.3	2.4	10.6	8.3
Utilities	121.6	127.1	3.8	5.5	2.5	5.5	4.5	2.0	4.5
Construction	1,058.5	1,079.2	14.3	20.7	27.1	43.5	2.0	2.6	4.2
Manufacturing	2,105.4	2,090.2	19.0	-15.2	-82.6	-79.1	-0.7	-3.8	-3.6
Services-producing sector	12,537.4	12,578.5	31.1	41.1	289.7	304.9	0.3	2.4	2.5
Trade	2,637.0	2,629.1	21.0	-7.9	26.2	40.2	-0.3	1.0	1.6
Transportation and warehousing	793.4	800.5	12.0	7.1	5.5	-2.2	0.9	0.7	-0.3
Finance, insurance, real estate and leasing	1,042.3	1,055.7	13.8	13.4	59.5	66.4	1.3	6.0	6.7
Professional, scientific and technical services	1,101.9	1,084.1	14.6	-17.8	-2.0	6.2	-1.6	-0.2	0.6
Business, building and other support services	697.5	712.9	12.8	15.4	48.0	48.0	2.2	7.2	7.2
Educational services	1,150.4	1,174.1	13.8	23.7	23.8	43.6	2.1	2.1	3.9
Health care and social assistance	1,802.6	1,803.0	15.4	0.4	81.9	45.8	0.0	4.8	2.6
Information, culture and recreation	752.2	748.3	12.6	-3.9	-1.3	7.4	-0.5	-0.2	1.0
Accommodation and food services	1,028.7	1,035.0	14.1	6.3	19.4	34.2	0.6	1.9	3.4
Other services	703.6	696.4	11.6	-7.2	24.5	-0.5	-1.0	3.6	-0.1
Public administration	827.7	839.3	11.0	11.6	4.1	15.6	1.4	0.5	1.9

1. Average standard error of change in two consecutive months (see "Sampling Errors" in Data Quality for further explanations).

2. Includes both incorporated and unincorporated working owners, self-employed persons who do not have a business and persons working in a family business without pay.

Note(s): Related CANSIM tables 282-0088, 282-0089

Table 3
Labour force characteristics by province, seasonally adjusted

	September 2006	October 2006	S.E. ¹	Change from			Percent change from		
				last month	last December	twelve months ago	last month	last December	twelve months ago
in thousands (except rates)									
Newfoundland and Labrador									
Population	427.2	426.9	...	-0.3	-2.3	-2.4	-0.1	-0.5	-0.6
Labour force	253.1	255.6	2.4	2.5	6.2	3.0	1.0	2.5	1.2
Employment	217.4	219.4	2.4	2.0	8.5	5.2	0.9	4.0	2.4
Employment full-time	185.8	186.6	2.5	0.8	10.5	3.2	0.4	6.0	1.7
Employment part-time	31.5	32.8	1.9	1.3	-2.0	2.0	4.1	-5.7	6.5
Unemployment	35.7	36.2	2.2	0.5	-2.3	-2.2	1.4	-6.0	-5.7
Participation rate	59.2	59.9	0.6	0.7	1.8	1.1
Unemployment rate	14.1	14.2	0.8	0.1	-1.2	-1.0
Employment rate	50.9	51.4	0.6	0.5	2.3	1.5
Prince Edward Island									
Population	112.5	112.5	...	0.0	0.5	0.7	0.0	0.4	0.6
Labour force	76.8	76.3	0.6	-0.5	-0.9	-0.5	-0.7	-1.2	-0.7
Employment	68.5	67.8	0.7	-0.7	-0.8	-0.4	-1.0	-1.2	-0.6
Employment full-time	57.4	56.8	0.8	-0.6	-1.4	-0.8	-1.0	-2.4	-1.4
Employment part-time	11.1	11.0	0.7	-0.1	0.6	0.4	-0.9	5.8	3.8
Unemployment	8.3	8.5	0.6	0.2	-0.1	-0.1	2.4	-1.2	-1.2
Participation rate	68.3	67.8	0.5	-0.5	-1.1	-0.9
Unemployment rate	10.8	11.1	0.8	0.3	0.0	-0.1
Employment rate	60.9	60.3	0.6	-0.6	-1.0	-0.7
Nova Scotia									
Population	763.1	763.2	...	0.1	1.2	1.5	0.0	0.2	0.2
Labour force	476.3	480.2	2.8	3.9	-2.1	-4.7	0.8	-0.4	-1.0
Employment	439.4	441.0	3.0	1.6	-0.3	-2.1	0.4	-0.1	-0.5
Employment full-time	358.7	358.2	3.6	-0.5	-2.7	-2.2	-0.1	-0.7	-0.6
Employment part-time	80.7	82.8	3.2	2.1	2.4	0.1	2.6	3.0	0.1
Unemployment	36.9	39.2	2.5	2.3	-1.8	-2.6	6.2	-4.4	-6.2
Participation rate	62.4	62.9	0.4	0.5	-0.4	-0.8
Unemployment rate	7.7	8.2	0.5	0.5	-0.3	-0.4
Employment rate	57.6	57.8	0.4	0.2	-0.1	-0.4
New Brunswick									
Population	611.2	611.0	...	-0.2	-0.4	-0.4	0.0	-0.1	-0.1
Labour force	383.7	383.8	2.3	0.1	-9.3	-6.1	0.0	-2.4	-1.6
Employment	349.6	352.7	2.4	3.1	-2.6	5.4	0.9	-0.7	1.6
Employment full-time	294.7	297.9	3.0	3.2	3.3	7.2	1.1	1.1	2.5
Employment part-time	54.9	54.8	2.5	-0.1	-6.0	-1.8	-0.2	-9.9	-3.2
Unemployment	34.1	31.1	2.2	-3.0	-6.7	-11.5	-8.8	-17.7	-27.0
Participation rate	62.8	62.8	0.4	0.0	-1.5	-1.0
Unemployment rate	8.9	8.1	0.5	-0.8	-1.5	-2.8
Employment rate	57.2	57.7	0.4	0.5	-0.4	0.9
Quebec									
Population	6,266.6	6,272.6	...	6.0	56.7	68.2	0.1	0.9	1.1
Labour force	4,107.8	4,101.7	14.9	-6.1	11.3	18.2	-0.1	0.3	0.4
Employment	3,777.3	3,784.5	14.7	7.2	29.5	40.8	0.2	0.8	1.1
Employment full-time	3,088.5	3,115.0	19.8	26.5	40.9	58.1	0.9	1.3	1.9
Employment part-time	688.7	669.4	17.6	-19.3	-11.5	-17.4	-2.8	-1.7	-2.5
Unemployment	330.6	317.2	13.4	-13.4	-18.1	-22.6	-4.1	-5.4	-6.7
Participation rate	65.6	65.4	0.2	-0.2	-0.4	-0.4
Unemployment rate	8.0	7.7	0.3	-0.3	-0.5	-0.6
Employment rate	60.3	60.3	0.2	0.0	-0.1	0.0

See footnotes at the end of the table.

Table 3 – continued

Labour force characteristics by province, seasonally adjusted

	September 2006	October 2006	S.E. ¹	Change from			Percent change from		
				last month	last December	twelve months ago	last month	last December	twelve months ago
in thousands (except rates)									
Ontario									
Population	10,259.9	10,270.7	...	10.8	117.9	141.9	0.1	1.2	1.4
Labour force	6,943.6	6,926.9	18.2	-16.7	67.3	37.4	-0.2	1.0	0.5
Employment	6,487.3	6,485.5	18.1	-1.8	52.1	35.6	0.0	0.8	0.6
Employment full-time	5,329.8	5,346.6	23.4	16.8	34.0	42.8	0.3	0.6	0.8
Employment part-time	1,157.5	1,138.9	21.2	-18.6	18.1	-7.2	-1.6	1.6	-0.6
Unemployment	456.3	441.4	15.5	-14.9	15.2	1.8	-3.3	3.6	0.4
Participation rate	67.7	67.4	0.2	-0.3	-0.2	-0.6
Unemployment rate	6.6	6.4	0.2	-0.2	0.2	0.0
Employment rate	63.2	63.1	0.2	-0.1	-0.3	-0.6
Manitoba									
Population	892.9	893.1	...	0.2	3.2	2.9	0.0	0.4	0.3
Labour force	615.2	613.8	2.8	-1.4	4.5	6.1	-0.2	0.7	1.0
Employment	588.2	588.2	2.8	0.0	4.6	7.7	0.0	0.8	1.3
Employment full-time	471.9	468.5	4.0	-3.4	4.6	2.9	-0.7	1.0	0.6
Employment part-time	116.3	119.8	3.7	3.5	0.1	4.9	3.0	0.1	4.3
Unemployment	27.0	25.5	2.2	-1.5	-0.2	-1.7	-5.6	-0.8	-6.2
Participation rate	68.9	68.7	0.3	-0.2	0.2	0.4
Unemployment rate	4.4	4.2	0.3	-0.2	0.0	-0.3
Employment rate	65.9	65.9	0.3	0.0	0.3	0.7
Saskatchewan									
Population	746.1	746.1	...	0.0	-2.1	-2.7	0.0	-0.3	-0.4
Labour force	519.4	520.6	2.4	1.2	14.3	15.4	0.2	2.8	3.0
Employment	497.3	500.3	2.4	3.0	20.6	21.5	0.6	4.3	4.5
Employment full-time	408.8	406.9	3.3	-1.9	17.6	23.5	-0.5	4.5	6.1
Employment part-time	88.5	93.4	3.0	4.9	3.0	-1.9	5.5	3.3	-2.0
Unemployment	22.1	20.3	1.9	-1.8	-6.3	-6.2	-8.1	-23.7	-23.4
Participation rate	69.6	69.8	0.3	0.2	2.1	2.3
Unemployment rate	4.3	3.9	0.4	-0.4	-1.4	-1.3
Employment rate	66.7	67.1	0.3	0.4	3.0	3.2
Alberta									
Population	2,662.0	2,673.9	...	11.9	86.7	99.8	0.4	3.4	3.9
Labour force	1,948.2	1,960.6	8.3	12.4	81.1	92.0	0.6	4.3	4.9
Employment	1,879.5	1,902.1	8.1	22.6	102.3	108.6	1.2	5.7	6.1
Employment full-time	1,582.8	1,614.3	10.9	31.5	115.7	135.6	2.0	7.7	9.2
Employment part-time	296.7	287.8	9.9	-8.9	-13.5	-27.0	-3.0	-4.5	-8.6
Unemployment	68.8	58.5	5.7	-10.3	-21.2	-16.6	-15.0	-26.6	-22.1
Participation rate	73.2	73.3	0.3	0.1	0.7	0.7
Unemployment rate	3.5	3.0	0.3	-0.5	-1.2	-1.0
Employment rate	70.6	71.1	0.3	0.5	1.5	1.4
British Columbia									
Population	3,524.0	3,528.9	...	4.9	50.6	61.0	0.1	1.5	1.8
Labour force	2,311.8	2,321.7	9.8	9.9	38.8	57.3	0.4	1.7	2.5
Employment	2,200.7	2,214.0	9.9	13.3	46.9	65.3	0.6	2.2	3.0
Employment full-time	1,771.2	1,766.5	13.2	-4.7	36.9	65.2	-0.3	2.1	3.8
Employment part-time	429.5	447.5	12.5	18.0	10.0	0.1	4.2	2.3	0.0
Unemployment	111.1	107.7	7.2	-3.4	-8.1	-8.0	-3.1	-7.0	-6.9
Participation rate	65.6	65.8	0.3	0.2	0.2	0.5
Unemployment rate	4.8	4.6	0.3	-0.2	-0.5	-0.5
Employment rate	62.4	62.7	0.3	0.3	0.4	0.7

1. Average standard error of change in two consecutive months (see "Sampling Errors" in Data Quality for further explanations).

Note(s): Related CANSIM table 282-0087

Table 4-1
Selected labour force characteristics (seasonally adjusted) — Newfoundland and Labrador

	September 2006	October 2006	S.E. ¹	Change from			Percent change from		
				last month	last December	twelve months ago	last month	last December	twelve months ago
in thousands (except rates)									
Both sexes, 15 years and over									
Population	427.2	426.9	...	-0.3	-2.3	-2.4	-0.1	-0.5	-0.6
Labour force	253.1	255.6	2.4	2.5	6.2	3.0	1.0	2.5	1.2
Employment	217.4	219.4	2.4	2.0	8.5	5.2	0.9	4.0	2.4
Employment full-time	185.8	186.6	2.5	0.8	10.5	3.2	0.4	6.0	1.7
Unemployment	35.7	36.2	2.2	0.5	-2.3	-2.2	1.4	-6.0	-5.7
Participation rate	59.2	59.9	0.6	0.7	1.8	1.1
Unemployment rate	14.1	14.2	0.8	0.1	-1.2	-1.0
Employment rate	50.9	51.4	0.6	0.5	2.3	1.5
Part-time rate	14.5	14.9	0.8	0.5	-1.6	0.6
Both sexes, 15 to 24 years									
Population	66.1	65.8	...	-0.3	-2.1	-2.4	-0.5	-3.1	-3.5
Labour force	35.1	35.9	1.3	0.8	-0.7	-0.7	2.3	-1.9	-1.9
Employment	27.7	29.0	1.2	1.3	0.4	1.1	4.7	1.4	3.9
Unemployment	7.4	6.9	1.1	-0.5	-1.1	-1.8	-6.8	-13.8	-20.7
Participation rate	53.1	54.6	1.9	1.5	0.7	0.9
Unemployment rate	21.1	19.2	2.8	-1.9	-2.7	-4.6
Employment rate	41.9	44.1	1.7	2.2	2.0	3.2
Part-time rate	33.2	40.3	3.6	7.1	-5.8	-0.5
Men, 25 years and over									
Population	174.7	174.7	...	0.0	-0.3	-0.3	0.0	-0.2	-0.2
Labour force	113.0	114.5	1.3	1.5	3.3	0.9	1.3	3.0	0.8
Employment	96.7	98.0	1.4	1.3	4.4	1.3	1.3	4.7	1.3
Unemployment	16.3	16.4	1.4	0.1	-1.2	-0.5	0.6	-6.8	-3.0
Participation rate	64.7	65.5	0.8	0.8	2.0	0.6
Unemployment rate	14.4	14.3	1.1	-0.1	-1.5	-0.6
Employment rate	55.4	56.1	0.8	0.7	2.6	0.8
Part-time rate	5.7	4.6	0.8	-1.1	0.4	1.1
Women, 25 years and over									
Population	186.3	186.3	...	0.0	0.1	0.2	0.0	0.1	0.1
Labour force	105.0	105.2	1.3	0.2	3.6	2.8	0.2	3.5	2.7
Employment	93.0	92.3	1.3	-0.7	3.6	2.7	-0.8	4.1	3.0
Unemployment	12.0	12.9	1.2	0.9	0.0	0.1	7.5	0.0	0.8
Participation rate	56.4	56.5	0.7	0.1	1.9	1.5
Unemployment rate	11.4	12.3	1.1	0.9	-0.4	-0.2
Employment rate	49.9	49.5	0.7	-0.4	1.9	1.4
Part-time rate	18.1	18.0	1.3	-0.1	-2.0	0.2
Industry									
	217.4	219.4	2.4	2.0	8.5	5.2	0.9	4.0	2.4
Goods-producing sector									
Agriculture	46.9	50.5	2.0	3.6	0.7	-0.2	7.7	1.4	-0.4
Forestry, fishing, mining, oil and gas	1.7	1.7	0.4	0.0	-0.5	-1.2	0.0	-22.7	-41.4
Utilities	15.6	17.4	1.0	1.8	2.2	1.7	11.5	14.5	10.8
Construction	1.6	1.7	0.3	0.1	-0.9	-0.4	6.2	-34.6	-19.0
Manufacturing	13.5	13.8	1.0	0.3	1.9	1.3	2.2	16.0	10.4
	14.6	15.9	1.2	1.3	-1.9	-1.5	8.9	-10.7	-8.6
Services-producing sector									
Trade	170.4	168.8	2.1	-1.6	7.7	5.3	-0.9	4.8	3.2
Transportation and warehousing	37.9	37.7	1.3	-0.2	-0.8	-1.0	-0.5	-2.1	-2.6
Finance, insurance, real estate and leasing	11.2	11.3	0.8	0.1	-0.4	-0.2	0.9	-3.4	-1.7
Professional, scientific and technical services	6.1	6.0	0.6	-0.1	-1.1	-0.9	-1.6	-15.5	-13.0
Business, building and other support services	6.8	6.5	0.6	-0.3	-0.5	-1.8	-4.4	-7.1	-21.7
Educational services	9.8	9.7	0.8	-0.1	3.1	3.2	-1.0	47.0	49.2
Health care and social assistance	17.1	17.6	0.9	0.5	1.5	0.5	2.9	9.3	2.9
Information, culture and recreation	29.2	29.6	1.1	0.4	1.8	0.9	1.4	6.5	3.1
Accommodation and food services	10.1	9.8	0.7	-0.3	3.0	3.1	-3.0	44.1	46.3
Other services	14.3	13.6	1.0	-0.7	0.0	0.6	-4.9	0.0	4.6
Public administration	11.1	11.2	0.9	0.1	0.7	-0.6	0.9	6.7	-5.1
	16.9	15.7	0.9	-1.2	0.4	1.4	-7.1	2.6	9.8

1. Average standard error of change in two consecutive months (see "Sampling Errors" in Data Quality for further explanations).

Note(s): Related CANSIM tables 282-0087, 282-0088

Table 4-2
Selected labour force characteristics (seasonally adjusted) — Prince Edward Island

	September 2006	October 2006	S.E. ¹	Change from			Percent change from		
				last month	last December	twelve months ago	last month	last December	twelve months ago
in thousands (except rates)									
Both sexes, 15 years and over									
Population	112.5	112.5	...	0.0	0.5	0.7	0.0	0.4	0.6
Labour force	76.8	76.3	0.6	-0.5	-0.9	-0.5	-0.7	-1.2	-0.7
Employment	68.5	67.8	0.7	-0.7	-0.8	-0.4	-1.0	-1.2	-0.6
Employment full-time	57.4	56.8	0.8	-0.6	-1.4	-0.8	-1.0	-2.4	-1.4
Unemployment	8.3	8.5	0.6	0.2	-0.1	-0.1	2.4	-1.2	-1.2
Participation rate	68.3	67.8	0.5	-0.5	-1.1	-0.9
Unemployment rate	10.8	11.1	0.8	0.3	0.0	-0.1
Employment rate	60.9	60.3	0.6	-0.6	-1.0	-0.7
Part-time rate	16.2	16.2	0.9	0.0	1.1	0.7
Both sexes, 15 to 24 years									
Population	19.9	19.9	...	0.0	0.1	0.2	0.0	0.5	1.0
Labour force	13.7	13.6	0.4	-0.1	0.2	0.2	-0.7	1.5	1.5
Employment	12.0	11.7	0.4	-0.3	0.3	0.5	-2.5	2.6	4.5
Unemployment	1.7	1.9	0.3	0.2	-0.2	-0.3	11.8	-9.5	-13.6
Participation rate	68.8	68.3	2.0	-0.5	0.6	0.3
Unemployment rate	12.4	14.0	2.3	1.6	-1.7	-2.4
Employment rate	60.3	58.8	1.9	-1.5	1.2	1.9
Part-time rate	39.2	38.5	3.3	-0.7	2.5	-0.8
Men, 25 years and over									
Population	44.4	44.5	...	0.1	0.3	0.3	0.2	0.7	0.7
Labour force	32.4	32.2	0.3	-0.2	-0.8	-0.6	-0.6	-2.4	-1.8
Employment	28.5	28.7	0.4	0.2	-0.3	-0.2	0.7	-1.0	-0.7
Unemployment	3.9	3.4	0.4	-0.5	-0.6	-0.5	-12.8	-15.0	-12.8
Participation rate	73.0	72.4	0.8	-0.6	-2.3	-1.8
Unemployment rate	12.0	10.6	1.1	-1.4	-1.5	-1.3
Employment rate	64.2	64.5	0.9	0.3	-1.1	-0.9
Part-time rate	4.9	5.2	0.9	0.3	-0.6	-0.3
Women, 25 years and over									
Population	48.2	48.2	...	0.0	0.2	0.2	0.0	0.4	0.4
Labour force	30.7	30.5	0.3	-0.2	-0.2	-0.1	-0.7	-0.7	-0.3
Employment	28.0	27.4	0.4	-0.6	-0.9	-0.7	-2.1	-3.2	-2.5
Unemployment	2.7	3.2	0.3	0.5	0.7	0.7	18.5	28.0	28.0
Participation rate	63.7	63.3	0.6	-0.4	-0.7	-0.5
Unemployment rate	8.8	10.5	1.0	1.7	2.4	2.3
Employment rate	58.1	56.8	0.8	-1.3	-2.2	-1.7
Part-time rate	17.9	18.2	1.5	0.4	1.6	1.9
Industry									
Goods-producing sector	18.7	18.6	0.6	-0.1	-0.2	0.7	-0.5	-1.1	3.9
Agriculture	3.6	3.7	0.3	0.1	-0.1	0.0	2.8	-2.6	0.0
Forestry, fishing, mining, oil and gas	2.4	2.6	0.2	0.2	0.4	0.4	8.3	18.2	18.2
Utilities	0.3	0.3	0.1	0.0	-0.1	-0.1	0.0	-25.0	-25.0
Construction	5.8	5.5	0.3	-0.3	0.2	0.6	-5.2	3.8	12.2
Manufacturing	6.6	6.5	0.4	-0.1	-0.6	-0.2	-1.5	-8.5	-3.0
Services-producing sector	49.8	49.2	0.7	-0.6	-0.7	-1.1	-1.2	-1.4	-2.2
Trade	10.1	9.7	0.4	-0.4	0.5	0.0	-4.0	5.4	0.0
Transportation and warehousing	2.2	2.5	0.2	0.3	0.4	0.3	13.6	19.0	13.6
Finance, insurance, real estate and leasing	2.4	2.3	0.2	-0.1	0.3	0.2	-4.2	15.0	9.5
Professional, scientific and technical services	2.8	2.4	0.2	-0.4	-0.2	0.1	-14.3	-7.7	4.3
Business, building and other support services	2.8	2.9	0.3	0.1	0.1	-0.1	3.6	3.6	-3.3
Educational services	4.6	4.5	0.3	-0.1	-0.2	-0.3	-2.2	-4.3	-6.2
Health care and social assistance	7.6	7.8	0.3	0.2	0.1	-0.4	2.6	1.3	-4.9
Information, culture and recreation	2.5	2.5	0.3	0.0	-0.4	-0.4	0.0	-13.8	-13.8
Accommodation and food services	5.4	5.7	0.4	0.3	-0.4	-0.1	5.6	-6.6	-1.7
Other services	2.7	2.7	0.2	0.0	-0.7	-0.5	0.0	-20.6	-15.6
Public administration	6.6	6.2	0.3	-0.4	0.0	-0.1	-6.1	0.0	-1.6

1. Average standard error of change in two consecutive months (see "Sampling Errors" in Data Quality for further explanations).

Note(s): Related CANSIM tables 282-0087, 282-0088

Table 4-3
Selected labour force characteristics (seasonally adjusted) — Nova Scotia

	September 2006	October 2006	S.E. ¹	Change from			Percent change from		
				last month	last December	twelve months ago	last month	last December	twelve months ago
in thousands (except rates)									
Both sexes, 15 years and over									
Population	763.1	763.2	...	0.1	1.2	1.5	0.0	0.2	0.2
Labour force	476.3	480.2	2.8	3.9	-2.1	-4.7	0.8	-0.4	-1.0
Employment	439.4	441.0	3.0	1.6	-0.3	-2.1	0.4	-0.1	-0.5
Employment full-time	358.7	358.2	3.6	-0.5	-2.7	-2.2	-0.1	-0.7	-0.6
Unemployment	36.9	39.2	2.5	2.3	-1.8	-2.6	6.2	-4.4	-6.2
Participation rate	62.4	62.9	0.4	0.5	-0.4	-0.8
Unemployment rate	7.7	8.2	0.5	0.5	-0.3	-0.4
Employment rate	57.6	57.8	0.4	0.2	-0.1	-0.4
Part-time rate	18.4	18.8	0.7	0.4	0.6	0.1
Both sexes, 15 to 24 years									
Population	123.0	122.9	...	-0.1	-0.7	-0.8	-0.1	-0.6	-0.6
Labour force	81.1	82.0	1.8	0.9	0.6	0.8	1.1	0.7	1.0
Employment	70.4	69.5	1.7	-0.9	-1.2	-0.4	-1.3	-1.7	-0.6
Unemployment	10.7	12.4	1.5	1.7	1.6	1.1	15.9	14.8	9.7
Participation rate	65.9	66.7	1.4	0.8	0.8	1.1
Unemployment rate	13.2	15.1	1.7	1.9	1.8	1.2
Employment rate	57.2	56.6	1.4	-0.6	-0.6	0.1
Part-time rate	44.5	45.2	2.3	0.7	1.0	-0.7
Men, 25 years and over									
Population	305.7	305.7	...	0.0	0.7	0.8	0.0	0.2	0.3
Labour force	206.6	206.5	1.5	-0.1	-3.1	-4.7	0.0	-1.5	-2.2
Employment	189.2	190.2	1.7	1.0	-3.0	-4.5	0.5	-1.6	-2.3
Unemployment	17.4	16.2	1.5	-1.2	-0.2	-0.3	-6.9	-1.2	-1.8
Participation rate	67.6	67.5	0.5	-0.1	-1.2	-1.8
Unemployment rate	8.4	7.8	0.7	-0.6	0.0	0.0
Employment rate	61.9	62.2	0.5	0.3	-1.1	-1.7
Part-time rate	5.9	7.2	0.7	1.2	0.9	0.6
Women, 25 years and over									
Population	334.5	334.6	...	0.1	1.2	1.5	0.0	0.4	0.5
Labour force	188.6	191.8	1.5	3.2	0.5	-0.7	1.7	0.3	-0.4
Employment	179.8	181.2	1.5	1.4	3.8	2.7	0.8	2.1	1.5
Unemployment	8.8	10.6	1.2	1.8	-3.2	-3.4	20.5	-23.2	-24.3
Participation rate	56.4	57.3	0.4	0.9	-0.1	-0.5
Unemployment rate	4.7	5.5	0.6	0.8	-1.7	-1.8
Employment rate	53.8	54.2	0.5	0.4	1.0	0.6
Part-time rate	21.3	20.9	1.1	-0.4	-0.1	-0.4
Industry									
Industry	439.4	441.0	3.0	1.6	-0.3	-2.1	0.4	-0.1	-0.5
Goods-producing sector									
Goods-producing sector	84.0	85.3	2.3	1.3	-3.8	-7.0	1.5	-4.3	-7.6
Agriculture	4.4	4.7	0.7	0.3	-0.1	-0.8	6.8	-2.1	-14.5
Forestry, fishing, mining, oil and gas	12.1	12.4	1.2	0.3	-2.9	-4.2	2.5	-19.0	-25.3
Utilities	2.0	2.1	0.3	0.1	0.8	0.3	5.0	61.5	16.7
Construction	27.2	28.1	1.4	0.9	0.8	-0.4	3.3	2.9	-1.4
Manufacturing	38.4	38.0	1.5	-0.4	-2.4	-1.9	-1.0	-5.9	-4.8
Services-producing sector									
Services-producing sector	355.4	355.7	3.0	0.3	3.4	4.9	0.1	1.0	1.4
Trade	74.3	75.0	1.9	0.7	-1.4	-3.6	0.9	-1.8	-4.6
Transportation and warehousing	18.7	18.1	1.1	-0.6	-2.5	-0.8	-3.2	-12.1	-4.2
Finance, insurance, real estate and leasing	23.6	23.3	1.1	-0.3	0.1	1.3	-1.3	0.4	5.9
Professional, scientific and technical services	18.0	17.3	1.1	-0.7	-2.4	-3.0	-3.9	-12.2	-14.8
Business, building and other support services	29.7	29.7	1.4	0.0	5.6	5.0	0.0	23.2	20.2
Educational services	32.7	34.7	1.3	2.0	-0.5	-1.3	6.1	-1.4	-3.6
Health care and social assistance	57.3	59.8	1.5	2.5	1.6	3.1	4.4	2.7	5.5
Information, culture and recreation	16.7	15.3	1.1	-1.4	0.9	0.5	-8.4	6.2	3.4
Accommodation and food services	32.8	32.9	1.5	0.1	2.5	2.8	0.3	8.2	9.3
Other services	22.5	20.6	1.2	-1.9	-0.4	0.1	-8.4	-1.9	0.5
Public administration	29.1	29.0	1.1	-0.1	0.0	0.8	-0.3	0.0	2.8

1. Average standard error of change in two consecutive months (see "Sampling Errors" in Data Quality for further explanations).

Note(s): Related CANSIM tables 282-0087, 282-0088

Table 4-4
Selected labour force characteristics (seasonally adjusted) — New Brunswick

	September 2006	October 2006	S.E. ¹	Change from			Percent change from		
				last month	last December	twelve months ago	last month	last December	twelve months ago
in thousands (except rates)									
Both sexes, 15 years and over									
Population	611.2	611.0	...	-0.2	-0.4	-0.4	0.0	-0.1	-0.1
Labour force	383.7	383.8	2.3	0.1	-9.3	-6.1	0.0	-2.4	-1.6
Employment	349.6	352.7	2.4	3.1	-2.6	5.4	0.9	-0.7	1.6
Employment full-time	294.7	297.9	3.0	3.2	3.3	7.2	1.1	1.1	2.5
Unemployment	34.1	31.1	2.2	-3.0	-6.7	-11.5	-8.8	-17.7	-27.0
Participation rate	62.8	62.8	0.4	0.0	-1.5	-1.0
Unemployment rate	8.9	8.1	0.5	-0.8	-1.5	-2.8
Employment rate	57.2	57.7	0.4	0.5	-0.4	0.9
Part-time rate	15.7	15.5	0.7	-0.2	-1.6	-0.8
Both sexes, 15 to 24 years									
Population	95.6	95.4	...	-0.2	-0.7	-0.7	-0.2	-0.7	-0.7
Labour force	61.6	60.3	1.3	-1.3	-3.0	-3.4	-2.1	-4.7	-5.3
Employment	52.4	52.7	1.4	0.3	-1.6	0.3	0.6	-2.9	0.6
Unemployment	9.2	7.6	1.2	-1.6	-1.4	-3.6	-17.4	-15.6	-32.1
Participation rate	64.4	63.2	1.4	-1.2	-2.7	-3.1
Unemployment rate	14.9	12.6	1.7	-2.3	-1.6	-5.0
Employment rate	54.8	55.2	1.4	0.4	-1.3	0.7
Part-time rate	35.7	34.9	2.5	-0.8	-5.8	-5.0
Men, 25 years and over									
Population	249.3	249.3	...	0.0	0.4	0.5	0.0	0.2	0.2
Labour force	169.5	170.5	1.3	1.0	-1.5	-0.5	0.6	-0.9	-0.3
Employment	154.9	155.5	1.5	0.6	-0.2	3.3	0.4	-0.1	2.2
Unemployment	14.6	15.0	1.4	0.4	-1.3	-3.9	2.7	-8.0	-20.6
Participation rate	68.0	68.4	0.5	0.4	-0.7	-0.3
Unemployment rate	8.6	8.8	0.8	0.2	-0.7	-2.3
Employment rate	62.1	62.4	0.6	0.3	-0.2	1.2
Part-time rate	5.9	5.8	0.7	-0.2	-0.2	0.4
Women, 25 years and over									
Population	266.3	266.3	...	0.0	-0.1	-0.1	0.0	0.0	0.0
Labour force	152.6	153.0	1.2	0.4	-4.8	-2.2	0.3	-3.0	-1.4
Employment	142.3	144.5	1.3	2.2	-0.9	1.7	1.5	-0.6	1.2
Unemployment	10.3	8.5	1.1	-1.8	-3.9	-4.0	-17.5	-31.5	-32.0
Participation rate	57.3	57.5	0.5	0.2	-1.7	-0.8
Unemployment rate	6.7	5.6	0.7	-1.1	-2.3	-2.5
Employment rate	53.4	54.3	0.5	0.9	-0.3	0.7
Part-time rate	19.0	19.0	1.1	0.0	-1.1	-0.2
Industry									
	349.6	352.7	2.4	3.1	-2.6	5.4	0.9	-0.7	1.6
Goods-producing sector									
Agriculture	5.6	6.4	0.7	0.8	-1.8	0.2	14.3	-22.0	3.2
Forestry, fishing, mining, oil and gas	9.2	9.1	0.9	-0.1	-1.9	-3.0	-1.1	-17.3	-24.8
Utilities	3.2	3.0	0.4	-0.2	-0.4	-0.3	-6.2	-11.8	-9.1
Construction	20.5	21.3	1.1	0.8	2.2	4.0	3.9	11.5	23.1
Manufacturing	36.2	39.7	1.4	3.5	3.2	5.6	9.7	8.8	16.4
Services-producing sector									
	274.9	273.2	2.4	-1.7	-4.0	-1.1	-0.6	-1.4	-0.4
Trade	53.7	54.9	1.6	1.2	-2.8	-3.4	2.2	-4.9	-5.8
Transportation and warehousing	19.5	19.6	1.0	0.1	-0.5	-1.5	0.5	-2.5	-7.1
Finance, insurance, real estate and leasing	18.0	17.1	0.8	-0.9	2.8	4.5	-5.0	19.6	35.7
Professional, scientific and technical services	15.9	15.0	0.9	-0.9	0.8	1.4	-5.7	5.6	10.3
Business, building and other support services	21.7	22.3	1.1	0.6	1.0	1.5	2.8	4.7	7.2
Educational services	27.1	25.7	1.0	-1.4	-1.2	-1.6	-5.2	-4.5	-5.9
Health care and social assistance	43.9	44.4	1.2	0.5	-1.5	-2.0	1.1	-3.3	-4.3
Information, culture and recreation	11.5	11.8	0.8	0.3	-0.9	-0.9	2.6	-7.1	-7.1
Accommodation and food services	25.0	24.2	1.2	-0.8	-0.7	0.8	-3.2	-2.8	3.4
Other services	17.0	17.0	1.0	0.0	0.1	0.6	0.0	0.6	3.7
Public administration	21.5	21.2	0.9	-0.3	-1.0	-0.6	-1.4	-4.5	-2.8

1. Average standard error of change in two consecutive months (see "Sampling Errors" in Data Quality for further explanations).

Note(s): Related CANSIM tables 282-0087, 282-0088

Table 4-5
Selected labour force characteristics (seasonally adjusted) — Quebec

	September 2006	October 2006	S.E. ¹	Change from			Percent change from		
				last month	last December	twelve months ago	last month	last December	twelve months ago
in thousands (except rates)									
Both sexes, 15 years and over									
Population	6,266.6	6,272.6	...	6.0	56.7	68.2	0.1	0.9	1.1
Labour force	4,107.8	4,101.7	14.9	-6.1	11.3	18.2	-0.1	0.3	0.4
Employment	3,777.3	3,784.5	14.7	7.2	29.5	40.8	0.2	0.8	1.1
Employment full-time	3,088.5	3,115.0	19.8	26.5	40.9	58.1	0.9	1.3	1.9
Unemployment	330.6	317.2	13.4	-13.4	-18.1	-22.6	-4.1	-5.4	-6.7
Participation rate	65.6	65.4	0.2	-0.2	-0.4	-0.4
Unemployment rate	8.0	7.7	0.3	-0.3	-0.5	-0.6
Employment rate	60.3	60.3	0.2	0.0	-0.1	0.0
Part-time rate	18.2	17.7	0.5	-0.5	-0.4	-0.7
Both sexes, 15 to 24 years									
Population	950.9	951.5	...	0.6	1.3	1.5	0.1	0.1	0.2
Labour force	630.3	625.5	8.5	-4.8	-9.8	-0.9	-0.8	-1.5	-0.1
Employment	547.5	551.2	8.3	3.7	0.3	7.4	0.7	0.1	1.4
Unemployment	82.8	74.3	7.5	-8.5	-10.1	-8.3	-10.3	-12.0	-10.0
Participation rate	66.3	65.7	0.9	-0.6	-1.2	-0.2
Unemployment rate	13.1	11.9	1.1	-1.2	-1.4	-1.3
Employment rate	57.6	57.9	0.9	0.3	-0.1	0.7
Part-time rate	45.7	44.9	1.6	-0.8	-0.3	-1.6
Men, 25 years and over									
Population	2,595.7	2,598.5	...	2.8	28.2	33.7	0.1	1.1	1.3
Labour force	1,867.0	1,861.2	8.0	-5.8	5.0	2.4	-0.3	0.3	0.1
Employment	1,727.0	1,721.5	8.6	-5.5	-5.5	-3.9	-0.3	-0.3	-0.2
Unemployment	140.0	139.8	8.0	-0.2	10.5	6.4	-0.1	8.1	4.8
Participation rate	71.9	71.6	0.3	-0.3	-0.6	-0.9
Unemployment rate	7.5	7.5	0.4	0.0	0.5	0.3
Employment rate	66.5	66.2	0.3	-0.3	-1.0	-1.1
Part-time rate	6.8	6.8	0.5	0.0	-0.6	-0.6
Women, 25 years and over									
Population	2,719.9	2,722.6	...	2.7	27.1	33.0	0.1	1.0	1.2
Labour force	1,610.6	1,615.0	8.9	4.4	16.1	16.7	0.3	1.0	1.0
Employment	1,502.8	1,511.8	8.3	9.0	34.7	37.2	0.6	2.3	2.5
Unemployment	107.8	103.2	7.5	-4.6	-18.5	-20.5	-4.3	-15.2	-16.6
Participation rate	59.2	59.3	0.3	0.1	0.0	-0.1
Unemployment rate	6.7	6.4	0.5	-0.3	-1.2	-1.3
Employment rate	55.3	55.5	0.3	0.2	0.7	0.7
Part-time rate	21.4	20.2	0.8	-1.2	-0.4	-0.6
Industry									
	3,777.3	3,784.5	14.7	7.2	29.5	40.8	0.2	0.8	1.1
Goods-producing sector									
Agriculture	66.5	64.0	3.8	-2.5	-0.3	-0.9	-3.8	-0.5	-1.4
Forestry, fishing, mining, oil and gas	39.6	38.4	2.5	-1.2	-1.6	0.4	-3.0	-4.0	1.1
Utilities	28.5	30.7	2.0	2.2	-1.3	1.8	7.7	-4.1	6.2
Construction	184.5	181.5	7.2	-3.0	-3.8	-7.8	-1.6	-2.1	-4.1
Manufacturing	579.8	571.4	10.8	-8.4	-30.4	-32.4	-1.4	-5.1	-5.4
Services-producing sector									
	2,878.4	2,898.4	16.7	20.0	66.8	79.6	0.7	2.4	2.8
Trade	622.5	625.2	11.8	2.7	-17.3	-2.5	0.4	-2.7	-0.4
Transportation and warehousing	166.1	169.1	6.6	3.0	12.8	5.0	1.8	8.2	3.0
Finance, insurance, real estate and leasing	227.0	223.6	6.9	-3.4	19.6	13.5	-1.5	9.6	6.4
Professional, scientific and technical services	248.3	244.4	7.7	-3.9	5.6	18.4	-1.6	2.3	8.1
Business, building and other support services	141.1	148.5	6.8	7.4	17.1	10.8	5.2	13.0	7.8
Educational services	261.8	266.5	7.6	4.7	10.5	14.2	1.8	4.1	5.6
Health care and social assistance	459.7	458.4	9.0	-1.3	8.0	3.1	-0.3	1.8	0.7
Information, culture and recreation	167.9	168.5	7.1	0.6	5.5	11.1	0.4	3.4	7.1
Accommodation and food services	220.8	218.4	7.4	-2.4	3.8	-1.1	-1.1	1.8	-0.5
Other services	159.3	160.1	6.4	0.8	0.4	1.3	0.5	0.3	0.8
Public administration	204.0	215.8	6.2	11.8	0.9	5.9	5.8	0.4	2.8

1. Average standard error of change in two consecutive months (see "Sampling Errors" in Data Quality for further explanations).

Note(s): Related CANSIM tables 282-0087, 282-0088

Table 4-6
Selected labour force characteristics (seasonally adjusted) — Ontario

	September 2006	October 2006	S.E. ¹	Change from			Percent change from		
				last month	last December	twelve months ago	last month	last December	twelve months ago
in thousands (except rates)									
Both sexes, 15 years and over									
Population	10,259.9	10,270.7	...	10.8	117.9	141.9	0.1	1.2	1.4
Labour force	6,943.6	6,926.9	18.2	-16.7	67.3	37.4	-0.2	1.0	0.5
Employment	6,487.3	6,485.5	18.1	-1.8	52.1	35.6	0.0	0.8	0.6
Employment full-time	5,329.8	5,346.6	23.4	16.8	34.0	42.8	0.3	0.6	0.8
Unemployment	456.3	441.4	15.5	-14.9	15.2	1.8	-3.3	3.6	0.4
Participation rate	67.7	67.4	0.2	-0.3	-0.2	-0.6
Unemployment rate	6.6	6.4	0.2	-0.2	0.2	0.0
Employment rate	63.2	63.1	0.2	-0.1	-0.3	-0.6
Part-time rate	17.8	17.6	0.3	-0.3	0.1	-0.2
Both sexes, 15 to 24 years									
Population	1,708.0	1,709.6	...	1.6	15.3	18.7	0.1	0.9	1.1
Labour force	1,110.1	1,105.1	11.4	-5.0	7.6	8.1	-0.5	0.7	0.7
Employment	945.3	954.3	10.5	9.0	3.9	8.7	1.0	0.4	0.9
Unemployment	164.8	150.8	9.6	-14.0	3.7	-0.6	-8.5	2.5	-0.4
Participation rate	65.0	64.6	0.7	-0.4	-0.2	-0.3
Unemployment rate	14.8	13.6	0.8	-1.2	0.2	-0.2
Employment rate	55.3	55.8	0.6	0.5	-0.3	-0.1
Part-time rate	48.5	47.2	1.2	-1.4	0.1	-1.1
Men, 25 years and over									
Population	4,160.5	4,164.8	...	4.3	47.2	56.9	0.1	1.1	1.4
Labour force	3,087.9	3,084.2	8.9	-3.7	0.0	-9.6	-0.1	0.0	-0.3
Employment	2,926.1	2,925.1	10.0	-1.0	-11.6	-17.1	0.0	-0.4	-0.6
Unemployment	161.8	159.1	8.3	-2.7	11.6	7.5	-1.7	7.9	4.9
Participation rate	74.2	74.1	0.2	-0.1	-0.8	-1.2
Unemployment rate	5.2	5.2	0.3	0.0	0.4	0.3
Employment rate	70.3	70.2	0.2	-0.1	-1.1	-1.4
Part-time rate	6.3	5.9	0.3	-0.3	-0.4	-0.3
Women, 25 years and over									
Population	4,391.4	4,396.3	...	4.9	55.4	66.3	0.1	1.3	1.5
Labour force	2,745.6	2,737.6	10.2	-8.0	59.7	39.0	-0.3	2.2	1.4
Employment	2,615.9	2,606.1	10.0	-9.8	59.8	44.0	-0.4	2.3	1.7
Unemployment	129.7	131.5	8.1	1.8	-0.1	-5.1	1.4	-0.1	-3.7
Participation rate	62.5	62.3	0.2	-0.2	0.6	0.0
Unemployment rate	4.7	4.8	0.3	0.1	-0.1	-0.3
Employment rate	59.6	59.3	0.2	-0.3	0.6	0.1
Part-time rate	19.7	19.8	0.5	0.1	0.6	0.0
Industry									
	6,487.3	6,485.5	18.1	-1.8	52.1	35.6	0.0	0.8	0.6
Goods-producing sector									
	1,598.6	1,588.6	15.9	-10.0	-46.8	-43.1	-0.6	-2.9	-2.6
Agriculture	103.3	100.9	3.9	-2.4	2.1	0.3	-2.3	2.1	0.3
Forestry, fishing, mining, oil and gas	41.8	43.9	2.2	2.1	8.3	8.1	5.0	23.3	22.6
Utilities	49.3	51.6	2.4	2.3	1.1	1.9	4.7	2.2	3.8
Construction	400.4	405.9	9.4	5.5	0.7	6.5	1.4	0.2	1.6
Manufacturing	1,003.9	986.3	13.5	-17.6	-59.0	-60.1	-1.8	-5.6	-5.7
Services-producing sector									
	4,888.7	4,896.9	20.9	8.2	98.9	78.7	0.2	2.1	1.6
Trade	1,030.3	1,025.5	13.7	-4.8	39.9	34.5	-0.5	4.0	3.5
Transportation and warehousing	299.0	300.8	7.8	1.8	2.8	9.3	0.6	0.9	3.2
Finance, insurance, real estate and leasing	472.5	484.9	10.2	12.4	26.2	34.9	2.6	5.7	7.8
Professional, scientific and technical services	447.8	442.0	10.1	-5.8	-14.0	-22.4	-1.3	-3.1	-4.8
Business, building and other support services	283.7	291.1	9.0	7.4	-6.7	0.2	2.6	-2.2	0.1
Educational services	428.2	438.6	9.3	10.4	-18.3	-13.9	2.4	-4.0	-3.1
Health care and social assistance	648.7	647.2	9.7	-1.5	38.3	18.6	-0.2	6.3	3.0
Information, culture and recreation	318.7	313.5	8.3	-5.2	3.5	5.5	-1.6	1.1	1.8
Accommodation and food services	375.9	376.4	9.1	0.5	7.7	16.5	0.1	2.1	4.6
Other services	266.2	256.8	7.6	-9.4	19.7	-3.1	-3.5	8.3	-1.2
Public administration	317.8	320.0	7.4	2.2	-0.3	-1.5	0.7	-0.1	-0.5

1. Average standard error of change in two consecutive months (see "Sampling Errors" in Data Quality for further explanations).

Note(s): Related CANSIM tables 282-0087, 282-0088

Table 4-7
Selected labour force characteristics (seasonally adjusted) — Manitoba

	September 2006	October 2006	S.E. ¹	Change from			Percent change from		
				last month	last December	twelve months ago	last month	last December	twelve months ago
in thousands (except rates)									
Both sexes, 15 years and over									
Population	892.9	893.1	...	0.2	3.2	2.9	0.0	0.4	0.3
Labour force	615.2	613.8	2.8	-1.4	4.5	6.1	-0.2	0.7	1.0
Employment	588.2	588.2	2.8	0.0	4.6	7.7	0.0	0.8	1.3
Employment full-time	471.9	468.5	4.0	-3.4	4.6	2.9	-0.7	1.0	0.6
Unemployment	27.0	25.5	2.2	-1.5	-0.2	-1.7	-5.6	-0.8	-6.2
Participation rate	68.9	68.7	0.3	-0.2	0.2	0.4
Unemployment rate	4.4	4.2	0.3	-0.2	0.0	-0.3
Employment rate	65.9	65.9	0.3	0.0	0.3	0.7
Part-time rate	19.8	20.4	0.6	0.6	-0.1	0.6
Both sexes, 15 to 24 years									
Population	155.7	155.8	...	0.1	0.3	0.2	0.1	0.2	0.1
Labour force	111.0	111.6	1.7	0.6	2.1	3.2	0.5	1.9	3.0
Employment	99.8	101.6	1.7	1.8	1.2	1.9	1.8	1.2	1.9
Unemployment	11.2	10.0	1.4	-1.2	0.9	1.3	-10.7	9.9	14.9
Participation rate	71.3	71.6	1.1	0.3	1.2	1.9
Unemployment rate	10.1	9.0	1.2	-1.1	0.7	1.0
Employment rate	64.1	65.2	1.1	1.1	0.6	1.1
Part-time rate	44.2	45.6	2.0	1.4	-0.5	-0.6
Men, 25 years and over									
Population	359.8	360.0	...	0.2	2.0	2.0	0.1	0.6	0.6
Labour force	269.5	269.1	1.4	-0.4	-0.3	0.6	-0.1	-0.1	0.2
Employment	260.3	260.2	1.5	-0.1	0.3	2.1	0.0	0.1	0.8
Unemployment	9.2	8.8	1.2	-0.4	-0.7	-1.7	-4.3	-7.4	-16.2
Participation rate	74.9	74.8	0.4	-0.1	-0.5	-0.2
Unemployment rate	3.4	3.3	0.4	-0.1	-0.2	-0.6
Employment rate	72.3	72.3	0.4	0.0	-0.3	0.2
Part-time rate	6.1	6.2	0.6	0.1	-0.4	0.6
Women, 25 years and over									
Population	377.3	377.3	...	0.0	0.9	0.7	0.0	0.2	0.2
Labour force	234.7	233.1	1.6	-1.6	2.6	2.3	-0.7	1.1	1.0
Employment	228.1	226.4	1.6	-1.7	3.1	3.7	-0.7	1.4	1.7
Unemployment	6.6	6.7	1.1	0.1	-0.4	-1.4	1.5	-5.6	-17.3
Participation rate	62.2	61.8	0.4	-0.4	0.6	0.5
Unemployment rate	2.8	2.9	0.5	0.1	-0.2	-0.6
Employment rate	60.5	60.0	0.4	-0.5	0.7	0.9
Part-time rate	24.7	25.4	1.1	0.6	0.1	0.9
Industry									
Goods-producing sector	137.1	136.8	2.5	-0.3	-4.7	-4.8	-0.2	-3.3	-3.4
Agriculture	29.7	29.3	1.3	-0.4	-2.9	-0.8	-1.3	-9.0	-2.7
Forestry, fishing, mining, oil and gas	6.3	7.4	0.6	1.1	1.2	1.1	17.5	19.4	17.5
Utilities	6.1	5.0	0.5	-1.1	-1.6	-1.4	-18.0	-24.2	-21.9
Construction	27.6	28.1	1.4	0.5	-1.9	-1.7	1.8	-6.3	-5.7
Manufacturing	67.4	66.9	1.9	-0.5	0.4	-2.1	-0.7	0.6	-3.0
Services-producing sector	451.1	451.4	3.3	0.3	9.3	12.5	0.1	2.1	2.8
Trade	94.0	95.2	2.2	1.2	9.5	12.2	1.3	11.1	14.7
Transportation and warehousing	34.2	35.6	1.3	1.4	-0.2	0.4	4.1	-0.6	1.1
Finance, insurance, real estate and leasing	34.6	34.2	1.4	-0.4	-1.3	-1.9	-1.2	-3.7	-5.3
Professional, scientific and technical services	23.3	22.4	1.3	-0.9	0.2	-1.4	-3.9	0.9	-5.9
Business, building and other support services	19.2	18.3	1.2	-0.9	-0.3	-0.5	-4.7	-1.6	-2.7
Educational services	44.3	46.0	1.6	1.7	0.6	1.3	3.8	1.3	2.9
Health care and social assistance	82.2	82.3	1.8	0.1	7.9	6.9	0.1	10.6	9.2
Information, culture and recreation	25.5	24.8	1.3	-0.7	1.7	1.1	-2.7	7.4	4.6
Accommodation and food services	33.1	33.7	1.7	0.6	-6.4	-3.8	1.8	-16.0	-10.1
Other services	25.5	24.4	1.3	-1.1	-1.6	-3.0	-4.3	-6.2	-10.9
Public administration	35.2	34.5	1.3	-0.7	-0.9	1.1	-2.0	-2.5	3.3

1. Average standard error of change in two consecutive months (see "Sampling Errors" in Data Quality for further explanations).

Note(s): Related CANSIM tables 282-0087, 282-0088

Table 4-8
Selected labour force characteristics (seasonally adjusted) — Saskatchewan

	September 2006	October 2006	S.E. ¹	Change from			Percent change from		
				last month	last December	twelve months ago	last month	last December	twelve months ago
in thousands (except rates)									
Both sexes, 15 years and over									
Population	746.1	746.1	...	0.0	-2.1	-2.7	0.0	-0.3	-0.4
Labour force	519.4	520.6	2.4	1.2	14.3	15.4	0.2	2.8	3.0
Employment	497.3	500.3	2.4	3.0	20.6	21.5	0.6	4.3	4.5
Employment full-time	408.8	406.9	3.3	-1.9	17.6	23.5	-0.5	4.5	6.1
Unemployment	22.1	20.3	1.9	-1.8	-6.3	-6.2	-8.1	-23.7	-23.4
Participation rate	69.6	69.8	0.3	0.2	2.1	2.3
Unemployment rate	4.3	3.9	0.4	-0.4	-1.4	-1.3
Employment rate	66.7	67.1	0.3	0.4	3.0	3.2
Part-time rate	17.8	18.7	0.6	0.9	-0.2	-1.2
Both sexes, 15 to 24 years									
Population	137.6	137.5	...	-0.1	-0.7	-0.9	-0.1	-0.5	-0.7
Labour force	99.7	99.6	1.5	-0.1	5.0	4.9	-0.1	5.3	5.2
Employment	91.3	92.2	1.5	0.9	9.0	7.7	1.0	10.8	9.1
Unemployment	8.4	7.4	1.2	-1.0	-4.0	-2.8	-11.9	-35.1	-27.5
Participation rate	72.5	72.4	1.1	-0.1	3.9	4.0
Unemployment rate	8.4	7.4	1.2	-1.0	-4.7	-3.4
Employment rate	66.4	67.1	1.1	0.7	6.9	6.0
Part-time rate	37.5	39.0	1.8	1.6	-1.3	-1.8
Men, 25 years and over									
Population	296.8	296.9	...	0.1	-0.4	-0.6	0.0	-0.1	-0.2
Labour force	224.5	226.0	1.2	1.5	4.9	4.1	0.7	2.2	1.8
Employment	216.7	218.5	1.3	1.8	5.6	5.9	0.8	2.6	2.8
Unemployment	7.8	7.5	1.1	-0.3	-0.7	-1.8	-3.8	-8.5	-19.4
Participation rate	75.6	76.1	0.4	0.5	1.7	1.5
Unemployment rate	3.5	3.3	0.5	-0.2	-0.4	-0.9
Employment rate	73.0	73.6	0.4	0.6	2.0	2.1
Part-time rate	6.3	6.5	0.6	0.2	0.2	-0.5
Women, 25 years and over									
Population	311.7	311.7	...	0.0	-1.0	-1.3	0.0	-0.3	-0.4
Labour force	195.1	195.1	1.3	0.0	4.5	6.5	0.0	2.4	3.4
Employment	189.2	189.6	1.4	0.4	6.0	8.0	0.2	3.3	4.4
Unemployment	5.9	5.4	0.9	-0.5	-1.6	-1.6	-8.5	-22.9	-22.9
Participation rate	62.6	62.6	0.4	0.0	1.6	2.3
Unemployment rate	3.0	2.8	0.5	-0.2	-0.9	-0.9
Employment rate	60.7	60.8	0.4	0.1	2.1	2.8
Part-time rate	21.4	22.7	1.0	1.3	-0.9	-2.5
Industry									
Goods-producing sector	497.3	500.3	2.4	3.0	20.6	21.5	0.6	4.3	4.5
Agriculture	134.8	133.8	2.4	-1.0	7.0	6.3	-0.7	5.5	4.9
Forestry, fishing, mining, oil and gas	49.5	47.0	1.7	-2.5	2.4	0.1	-5.1	5.4	0.2
Utilities	22.5	22.5	1.0	0.0	2.1	3.4	0.0	10.3	17.8
Construction	4.3	4.6	0.4	0.3	0.0	0.2	7.0	0.0	4.5
Manufacturing	29.4	30.9	1.2	1.5	3.9	4.1	5.1	14.4	15.3
Manufacturing	29.1	28.8	1.2	-0.3	-1.3	-1.6	-1.0	-4.3	-5.3
Services-producing sector	362.4	366.5	2.8	4.1	13.6	15.2	1.1	3.9	4.3
Trade	78.7	80.6	1.9	1.9	6.9	5.9	2.4	9.4	7.9
Transportation and warehousing	25.4	26.3	1.1	0.9	-0.7	1.6	3.5	-2.6	6.5
Finance, insurance, real estate and leasing	24.6	26.7	1.0	2.1	0.6	1.0	8.5	2.3	3.9
Professional, scientific and technical services	19.8	19.9	0.9	0.1	2.0	2.1	0.5	11.2	11.8
Business, building and other support services	12.4	12.8	0.9	0.4	0.5	-0.4	3.2	4.1	-3.0
Educational services	39.5	39.0	1.3	-0.5	-0.2	0.8	-1.3	-0.5	2.1
Health care and social assistance	58.8	58.8	1.4	0.0	0.4	-0.2	0.0	0.7	-0.3
Information, culture and recreation	20.7	20.3	1.0	-0.4	0.5	-0.4	-1.9	2.5	-1.9
Accommodation and food services	32.3	32.5	1.3	0.2	3.2	4.9	0.6	10.9	17.8
Other services	22.6	22.0	1.1	-0.6	0.4	-0.5	-2.7	1.9	-2.2
Public administration	27.7	27.5	1.1	-0.2	-0.2	0.4	-0.7	-0.7	1.5

1. Average standard error of change in two consecutive months (see "Sampling Errors" in Data Quality for further explanations).

Note(s): Related CANSIM tables 282-0087, 282-0088

Table 4-9
Selected labour force characteristics (seasonally adjusted) — Alberta

	September 2006	October 2006	S.E. ¹	Change from			Percent change from		
				last month	last December	twelve months ago	last month	last December	twelve months ago
in thousands (except rates)									
Both sexes, 15 years and over									
Population	2,662.0	2,673.9	...	11.9	86.7	99.8	0.4	3.4	3.9
Labour force	1,948.2	1,960.6	8.3	12.4	81.1	92.0	0.6	4.3	4.9
Employment	1,879.5	1,902.1	8.1	22.6	102.3	108.6	1.2	5.7	6.1
Employment full-time	1,582.8	1,614.3	10.9	31.5	115.7	135.6	2.0	7.7	9.2
Unemployment	68.8	58.5	5.7	-10.3	-21.2	-16.6	-15.0	-26.6	-22.1
Participation rate	73.2	73.3	0.3	0.1	0.7	0.7
Unemployment rate	3.5	3.0	0.3	-0.5	-1.2	-1.0
Employment rate	70.6	71.1	0.3	0.5	1.5	1.4
Part-time rate	15.8	15.1	0.5	-0.7	-1.6	-2.4
Both sexes, 15 to 24 years									
Population	494.3	496.7	...	2.4	14.8	17.1	0.5	3.1	3.6
Labour force	345.5	356.7	5.0	11.2	16.1	19.2	3.2	4.7	5.7
Employment	319.4	335.2	4.9	15.8	20.5	21.9	4.9	6.5	7.0
Unemployment	26.1	21.5	3.4	-4.6	-4.4	-2.7	-17.6	-17.0	-11.2
Participation rate	69.9	71.8	1.0	1.9	1.1	1.4
Unemployment rate	7.6	6.0	1.0	-1.6	-1.6	-1.2
Employment rate	64.6	67.5	1.0	2.9	2.2	2.2
Part-time rate	33.1	32.6	1.7	-0.5	-2.3	-2.5
Men, 25 years and over									
Population	1,086.8	1,091.7	...	4.9	38.1	43.9	0.5	3.6	4.2
Labour force	889.2	886.7	3.8	-2.5	34.1	41.7	-0.3	4.0	4.9
Employment	866.0	870.8	4.1	4.8	45.8	52.3	0.6	5.6	6.4
Unemployment	23.2	15.9	3.1	-7.3	-11.7	-10.6	-31.5	-42.4	-40.0
Participation rate	81.8	81.2	0.4	-0.6	0.3	0.6
Unemployment rate	2.6	1.8	0.4	-0.8	-1.4	-1.3
Employment rate	79.7	79.8	0.4	0.1	1.5	1.7
Part-time rate	4.5	4.3	0.5	-0.3	-1.2	-1.7
Women, 25 years and over									
Population	1,081.0	1,085.4	...	4.4	33.7	38.7	0.4	3.2	3.7
Labour force	713.5	717.2	5.0	3.7	30.9	31.1	0.5	4.5	4.5
Employment	694.1	696.1	4.8	2.0	36.0	34.4	0.3	5.5	5.2
Unemployment	19.4	21.1	3.2	1.7	-5.1	-3.3	8.8	-19.5	-13.5
Participation rate	66.0	66.1	0.5	0.1	0.8	0.6
Unemployment rate	2.7	2.9	0.5	0.2	-0.9	-0.7
Employment rate	64.2	64.1	0.5	-0.1	1.3	0.9
Part-time rate	21.8	20.3	1.0	-1.5	-1.9	-3.3
Industry									
Population	1,879.5	1,902.1	8.1	22.6	102.3	108.6	1.2	5.7	6.1
Goods-producing sector									
Agriculture	515.2	533.5	7.2	18.3	51.0	48.7	3.6	10.6	10.0
Agriculture	49.4	47.2	2.6	-2.2	-3.9	-7.0	-4.5	-7.6	-12.9
Forestry, fishing, mining, oil and gas	138.1	143.8	3.9	5.7	19.4	11.6	4.1	15.6	8.8
Utilities	17.4	18.1	1.2	0.7	2.2	3.2	4.0	13.8	21.5
Construction	169.7	184.0	4.9	14.3	23.0	23.8	8.4	14.3	14.9
Manufacturing	140.6	140.5	4.4	-0.1	10.4	17.3	-0.1	8.0	14.0
Services-producing sector									
Trade	1,364.3	1,368.5	9.2	4.2	51.2	59.8	0.3	3.9	4.6
Trade	278.2	280.9	6.2	2.7	0.4	9.8	1.0	0.1	3.6
Transportation and warehousing	102.5	105.1	3.7	2.6	0.1	-8.6	2.5	0.1	-7.6
Finance, insurance, real estate and leasing	93.8	96.2	3.5	2.4	0.4	0.2	2.6	0.4	0.2
Professional, scientific and technical services	141.7	142.3	4.5	0.6	-1.3	1.1	0.4	-0.9	0.8
Business, building and other support services	68.8	68.0	3.4	-0.8	4.4	5.6	-1.2	6.9	9.0
Educational services	134.9	141.4	3.9	6.5	13.7	20.1	4.8	10.7	16.6
Health care and social assistance	180.3	169.3	4.6	-11.0	-2.4	-1.4	-6.1	-1.4	-0.8
Information, culture and recreation	70.2	71.7	3.3	1.5	4.2	-0.6	2.1	6.2	-0.8
Accommodation and food services	120.8	120.4	4.3	-0.4	11.5	16.9	-0.3	10.6	16.3
Other services	90.1	92.9	3.3	2.8	9.2	5.4	3.1	11.0	6.2
Public administration	82.9	80.4	2.8	-2.5	10.9	11.5	-3.0	15.7	16.7

1. Average standard error of change in two consecutive months (see "Sampling Errors" in Data Quality for further explanations).

Note(s): Related CANSIM tables 282-0087, 282-0088

Table 4-10
Selected labour force characteristics (seasonally adjusted) — British Columbia

	September 2006	October 2006	S.E. ¹	Change from			Percent change from		
				last month	last December	twelve months ago	last month	last December	twelve months ago
in thousands (except rates)									
Both sexes, 15 years and over									
Population	3,524.0	3,528.9	...	4.9	50.6	61.0	0.1	1.5	1.8
Labour force	2,311.8	2,321.7	9.8	9.9	38.8	57.3	0.4	1.7	2.5
Employment	2,200.7	2,214.0	9.9	13.3	46.9	65.3	0.6	2.2	3.0
Employment full-time	1,771.2	1,766.5	13.2	-4.7	36.9	65.2	-0.3	2.1	3.8
Unemployment	111.1	107.7	7.2	-3.4	-8.1	-8.0	-3.1	-7.0	-6.9
Participation rate	65.6	65.8	0.3	0.2	0.2	0.5
Unemployment rate	4.8	4.6	0.3	-0.2	-0.5	-0.5
Employment rate	62.4	62.7	0.3	0.3	0.4	0.7
Part-time rate	19.5	20.2	0.6	0.7	0.0	-0.6
Both sexes, 15 to 24 years									
Population	576.9	577.1	...	0.2	2.6	3.6	0.0	0.5	0.6
Labour force	377.3	381.4	5.7	4.1	3.0	2.3	1.1	0.8	0.6
Employment	347.3	350.0	5.7	2.7	2.1	2.0	0.8	0.6	0.6
Unemployment	30.0	31.4	4.1	1.4	0.9	0.3	4.7	3.0	1.0
Participation rate	65.4	66.1	1.0	0.7	0.2	0.0
Unemployment rate	8.0	8.2	1.0	0.2	0.1	0.0
Employment rate	60.2	60.6	1.0	0.4	0.0	-0.1
Part-time rate	38.5	38.1	1.8	-0.4	-5.1	-5.9
Men, 25 years and over									
Population	1,440.1	1,442.5	...	2.4	24.5	29.4	0.2	1.7	2.1
Labour force	1,039.2	1,039.1	5.2	-0.1	17.7	27.4	0.0	1.7	2.7
Employment	995.3	997.8	5.3	2.5	21.1	34.4	0.3	2.2	3.6
Unemployment	43.9	41.3	4.3	-2.6	-3.4	-7.0	-5.9	-7.6	-14.5
Participation rate	72.2	72.0	0.4	-0.2	0.0	0.4
Unemployment rate	4.2	4.0	0.4	-0.2	-0.4	-0.8
Employment rate	69.1	69.2	0.4	0.1	0.3	1.0
Part-time rate	8.5	9.0	0.6	0.5	2.2	1.6
Women, 25 years and over									
Population	1,507.0	1,509.3	...	2.3	23.5	28.0	0.2	1.6	1.9
Labour force	895.2	901.2	5.8	6.0	18.2	27.5	0.7	2.1	3.1
Employment	858.1	866.2	5.7	8.1	23.7	28.8	0.9	2.8	3.4
Unemployment	37.2	35.0	4.2	-2.2	-5.6	-1.3	-5.9	-13.8	-3.6
Participation rate	59.4	59.7	0.4	0.3	0.3	0.7
Unemployment rate	4.2	3.9	0.5	-0.3	-0.7	-0.3
Employment rate	56.9	57.4	0.4	0.5	0.7	0.9
Part-time rate	24.6	25.9	1.0	1.3	-0.3	-0.7
Industry									
	2,200.7	2,214.0	9.9	13.3	46.9	65.3	0.6	2.2	3.0
Goods-producing sector									
Agriculture	463.5	466.3	8.5	2.8	9.3	23.1	0.6	2.0	5.2
Forestry, fishing, mining, oil and gas	34.0	33.6	2.8	-0.4	-6.0	-3.1	-1.2	-15.2	-8.4
Utilities	47.0	46.5	2.7	-0.5	10.1	9.5	-1.1	27.7	25.7
Construction	8.9	10.0	1.2	1.1	2.7	0.3	12.4	37.0	3.1
Manufacturing	182.7	181.0	5.7	-1.7	0.6	13.9	-0.9	0.3	8.3
	190.8	195.1	5.7	4.3	1.7	2.4	2.3	0.9	1.2
Services-producing sector									
	1,737.2	1,747.7	11.1	10.5	37.7	42.2	0.6	2.2	2.5
Trade	350.2	345.1	7.5	-5.1	-6.3	-14.7	-1.5	-1.8	-4.1
Transportation and warehousing	115.2	113.5	4.5	-1.7	-4.9	-8.1	-1.5	-4.1	-6.7
Finance, insurance, real estate and leasing	141.1	143.4	4.5	2.3	12.3	14.2	1.6	9.4	11.0
Professional, scientific and technical services	170.3	170.5	5.2	0.2	6.0	10.9	0.1	3.6	6.8
Business, building and other support services	108.9	109.4	4.4	0.5	23.1	21.9	0.5	26.8	25.0
Educational services	156.9	159.6	4.8	2.7	13.5	19.7	1.7	9.2	14.1
Health care and social assistance	238.1	238.9	5.5	0.8	20.7	13.8	0.3	9.5	6.1
Information, culture and recreation	108.8	110.3	4.7	1.5	-18.7	-11.3	1.4	-14.5	-9.3
Accommodation and food services	171.5	176.9	5.6	5.4	-4.5	-2.0	3.1	-2.5	-1.1
Other services	90.2	90.2	4.3	0.0	0.4	0.7	0.0	0.4	0.8
Public administration	85.9	89.9	3.7	4.0	-3.9	-2.9	4.7	-4.2	-3.1

1. Average standard error of change in two consecutive months (see "Sampling Errors" in Data Quality for further explanations).

Note(s): Related CANSIM tables 282-0087, 282-0088

Table 5-1
Labour force characteristics by census metropolitan area (seasonally adjusted) — 3 month moving average

	September 2006	October 2006	S.E. ¹	Change from			Percent change from		
				last month	last December	twelve months ago	last month	last December	twelve months ago
in thousands (except rates)									
St. John's, Newfoundland and Labrador									
Population	151.5	151.6	...	0.1	0.8	1.0	0.1	0.5	0.7
Labour force	103.2	104.3	0.8	1.1	6.4	5.9	1.1	6.5	6.0
Employment	95.2	95.9	0.8	0.7	5.9	5.9	0.7	6.6	6.6
Unemployment	8.0	8.3	0.5	0.3	0.3	-0.1	3.8	3.8	-1.2
Participation rate	68.1	68.8	0.5	0.7	3.9	3.5
Unemployment rate	7.8	8.0	0.5	0.2	-0.2	-0.5
Employment rate	62.8	63.3	0.5	0.5	3.6	3.5
Halifax, Nova Scotia									
Population	311.6	311.8	...	0.2	1.7	2.2	0.1	0.5	0.7
Labour force	215.5	215.5	1.1	0.0	2.4	2.6	0.0	1.1	1.2
Employment	203.5	204.3	1.1	0.8	3.2	2.6	0.4	1.6	1.3
Unemployment	12.0	11.2	0.6	-0.8	-0.8	0.0	-6.7	-6.7	0.0
Participation rate	69.2	69.1	0.4	-0.1	0.4	0.3
Unemployment rate	5.6	5.2	0.3	-0.4	-0.4	-0.1
Employment rate	65.3	65.5	0.4	0.2	0.6	0.4
Saint John, New Brunswick									
Population	103.5	103.4	...	-0.1	0.0	0.1	-0.1	0.0	0.1
Labour force	65.1	65.1	0.7	0.0	-1.1	0.3	0.0	-1.7	0.5
Employment	60.9	61.1	0.7	0.2	-0.6	1.6	0.3	-1.0	2.7
Unemployment	4.2	4.0	0.3	-0.2	-0.5	-1.3	-4.8	-11.1	-24.5
Participation rate	62.9	63.0	0.7	0.1	-1.0	0.3
Unemployment rate	6.5	6.1	0.5	-0.4	-0.7	-2.1
Employment rate	58.8	59.1	0.7	0.3	-0.6	1.5
Saguenay, Quebec									
Population	126.0	126.1	...	0.1	-0.2	-0.2	0.1	-0.2	-0.2
Labour force	76.6	75.1	0.8	-1.5	-1.0	-1.3	-2.0	-1.3	-1.7
Employment	69.3	68.5	0.8	-0.8	-0.1	0.4	-1.2	-0.1	0.6
Unemployment	7.3	6.6	0.4	-0.7	-0.8	-1.7	-9.6	-10.8	-20.5
Participation rate	60.8	59.6	0.6	-1.2	-0.7	-0.9
Unemployment rate	9.5	8.8	0.5	-0.7	-0.9	-2.1
Employment rate	55.0	54.3	0.7	-0.7	0.0	0.4
Québec, Quebec									
Population	600.3	601.1	...	0.8	6.0	7.2	0.1	1.0	1.2
Labour force	397.0	397.6	3.2	0.6	-0.2	-1.0	0.2	-0.1	-0.3
Employment	375.9	374.8	3.4	-1.1	-4.2	-2.4	-0.3	-1.1	-0.6
Unemployment	21.1	22.8	1.5	1.7	4.0	1.4	8.1	21.3	6.5
Participation rate	66.1	66.1	0.5	0.0	-0.7	-1.0
Unemployment rate	5.3	5.7	0.4	0.4	1.0	0.3
Employment rate	62.6	62.4	0.6	-0.2	-1.3	-1.1
Trois-Rivières, Quebec									
Population	119.5	119.7	...	0.2	1.2	1.4	0.2	1.0	1.2
Labour force	72.1	72.2	0.6	0.1	-3.4	-2.7	0.1	-4.5	-3.6
Employment	66.1	66.5	0.7	0.4	-2.5	-2.4	0.6	-3.6	-3.5
Unemployment	6.1	5.8	0.4	-0.3	-0.8	-0.2	-4.9	-12.1	-3.3
Participation rate	60.3	60.3	0.5	0.0	-3.5	-3.0
Unemployment rate	8.5	8.0	0.5	-0.5	-0.7	0.0
Employment rate	55.3	55.6	0.6	0.3	-2.6	-2.6

See footnotes at the end of the table.

Table 5-1 – continued

Labour force characteristics by census metropolitan area (seasonally adjusted) — 3 month moving average

	September 2006	October 2006	S.E. ¹	Change from			Percent change from		
				last month	last December	twelve months ago	last month	last December	twelve months ago
in thousands (except rates)									
Sherbrooke, Quebec									
Population	135.4	135.5	...	0.1	1.3	1.7	0.1	1.0	1.3
Labour force	88.4	87.9	0.7	-0.5	0.8	2.3	-0.6	0.9	2.7
Employment	81.3	80.9	0.7	-0.4	-0.4	1.4	-0.5	-0.5	1.8
Unemployment	7.1	7.1	0.4	0.0	1.2	1.0	0.0	20.3	16.4
Participation rate	65.3	64.9	0.5	-0.4	0.0	0.9
Unemployment rate	8.0	8.1	0.4	0.1	1.3	1.0
Employment rate	60.0	59.7	0.6	-0.3	-0.9	0.3
Montréal, Quebec									
Population	3,008.7	3,012.0	...	3.3	30.5	37.1	0.1	1.0	1.2
Labour force	2,032.4	2,038.1	7.3	5.7	25.6	27.3	0.3	1.3	1.4
Employment	1,865.9	1,876.0	7.5	10.1	50.8	44.9	0.5	2.8	2.5
Unemployment	166.5	162.2	4.9	-4.3	-25.1	-17.6	-2.6	-13.4	-9.8
Participation rate	67.6	67.7	0.2	0.1	0.2	0.1
Unemployment rate	8.2	8.0	0.2	-0.2	-1.3	-0.9
Employment rate	62.0	62.3	0.3	0.3	1.1	0.7
Ottawa-Gatineau, Ontario/Quebec									
Population	944.7	945.4	...	0.7	7.4	9.9	0.1	0.8	1.1
Labour force	681.3	672.6	3.3	-8.7	2.2	9.2	-1.3	0.3	1.4
Employment	647.1	638.2	3.5	-8.9	4.6	18.7	-1.4	0.7	3.0
Unemployment	34.2	34.4	1.7	0.2	-2.4	-9.6	0.6	-6.5	-21.8
Participation rate	72.1	71.1	0.4	-1.0	-0.4	0.2
Unemployment rate	5.0	5.1	0.3	0.1	-0.4	-1.5
Employment rate	68.5	67.5	0.4	-1.0	0.0	1.3
Ottawa-Gatineau, Quebec part, Ontario/Quebec									
Population	236.2	236.6	...	0.4	3.6	4.6	0.2	1.5	2.0
Labour force	167.8	168.5	1.1	0.7	-3.9	-0.9	0.4	-2.3	-0.5
Employment	160.0	160.2	1.2	0.2	-2.1	2.1	0.1	-1.3	1.3
Unemployment	7.8	8.2	0.6	0.4	-2.0	-3.1	5.1	-19.6	-27.4
Participation rate	71.0	71.2	0.5	0.2	-2.8	-1.8
Unemployment rate	4.6	4.9	0.3	0.3	-1.0	-1.8
Employment rate	67.7	67.7	0.5	0.0	-2.0	-0.4
Ottawa-Gatineau, Ontario part, Ontario/Quebec									
Population	708.5	708.8	...	0.3	3.8	5.2	0.0	0.5	0.7
Labour force	513.6	504.1	3.1	-9.5	6.2	10.1	-1.8	1.2	2.0
Employment	487.2	478.0	3.3	-9.2	6.7	16.6	-1.9	1.4	3.6
Unemployment	26.4	26.1	1.6	-0.3	-0.5	-6.5	-1.1	-1.9	-19.9
Participation rate	72.5	71.1	0.4	-1.4	0.5	0.9
Unemployment rate	5.1	5.2	0.3	0.1	-0.1	-1.4
Employment rate	68.8	67.4	0.5	-1.4	0.5	1.8
Kingston, Ontario									
Population	125.9	125.9	...	0.0	0.4	0.6	0.0	0.3	0.5
Labour force	82.5	81.1	0.8	-1.4	1.6	0.1	-1.7	2.0	0.1
Employment	77.0	76.5	0.8	-0.5	0.5	0.6	-0.6	0.7	0.8
Unemployment	5.5	4.6	0.3	-0.9	1.1	-0.5	-16.4	31.4	-9.8
Participation rate	65.5	64.4	0.6	-1.1	1.1	-0.2
Unemployment rate	6.7	5.7	0.4	-1.0	1.3	-0.6
Employment rate	61.2	60.8	0.6	-0.4	0.2	0.2

See footnotes at the end of the table.

Table 5-1 – continued

Labour force characteristics by census metropolitan area (seasonally adjusted) — 3 month moving average

	September 2006	October 2006	S.E. ¹	Change from			Percent change from		
				last month	last December	twelve months ago	last month	last December	twelve months ago
in thousands (except rates)									
Toronto, Ontario									
Population	4,384.9	4,392.2	...	7.3	71.0	87.0	0.2	1.6	2.0
Labour force	2,998.1	2,997.4	9.0	-0.7	3.0	-3.9	0.0	0.1	-0.1
Employment	2,800.8	2,797.4	9.3	-3.4	-7.5	-7.5	-0.1	-0.3	-0.3
Unemployment	197.4	200.0	5.5	2.6	10.5	3.6	1.3	5.5	1.8
Participation rate	68.4	68.2	0.2	-0.2	-1.1	-1.5
Unemployment rate	6.6	6.7	0.2	0.1	0.4	0.2
Employment rate	63.9	63.7	0.2	-0.2	-1.2	-1.5
Hamilton, Ontario									
Population	588.7	589.2	...	0.5	4.9	6.2	0.1	0.8	1.1
Labour force	395.4	393.3	3.0	-2.1	-1.7	3.8	-0.5	-0.4	1.0
Employment	370.2	367.7	3.0	-2.5	-3.6	1.4	-0.7	-1.0	0.4
Unemployment	25.2	25.6	1.3	0.4	2.0	2.4	1.6	8.5	10.3
Participation rate	67.2	66.8	0.5	-0.4	-0.8	0.0
Unemployment rate	6.4	6.5	0.3	0.1	0.5	0.5
Employment rate	62.9	62.4	0.5	-0.5	-1.1	-0.4
Kitchener, Ontario									
Population	372.0	372.6	...	0.6	5.6	6.7	0.2	1.5	1.8
Labour force	263.7	266.3	1.9	2.6	1.9	1.0	1.0	0.7	0.4
Employment	249.5	252.3	1.9	2.8	2.9	2.2	1.1	1.2	0.9
Unemployment	14.3	14.0	0.9	-0.3	-1.0	-1.2	-2.1	-6.7	-7.9
Participation rate	70.9	71.5	0.5	0.6	-0.5	-1.0
Unemployment rate	5.4	5.3	0.3	-0.1	-0.4	-0.4
Employment rate	67.1	67.7	0.5	0.6	-0.3	-0.7
London, Ontario									
Population	378.6	379.0	...	0.4	3.4	4.1	0.1	0.9	1.1
Labour force	259.7	263.7	1.8	4.0	6.7	5.3	1.5	2.6	2.1
Employment	241.8	246.0	1.9	4.2	6.7	4.7	1.7	2.8	1.9
Unemployment	17.9	17.7	0.9	-0.2	0.0	0.6	-1.1	0.0	3.5
Participation rate	68.6	69.6	0.5	1.0	1.2	0.7
Unemployment rate	6.9	6.7	0.3	-0.2	-0.2	0.1
Employment rate	63.9	64.9	0.5	1.0	1.2	0.5
Oshawa, Ontario									
Population	275.6	276.3	...	0.7	7.0	8.3	0.3	2.6	3.1
Labour force	192.4	191.3	1.5	-1.1	3.0	4.4	-0.6	1.6	2.4
Employment	179.1	178.3	1.6	-0.8	2.5	3.0	-0.4	1.4	1.7
Unemployment	13.3	13.0	0.7	-0.3	0.5	1.4	-2.3	4.0	12.1
Participation rate	69.8	69.2	0.5	-0.6	-0.7	-0.5
Unemployment rate	6.9	6.8	0.4	-0.1	0.2	0.6
Employment rate	65.0	64.5	0.6	-0.5	-0.8	-0.9
St. Catharines-Niagara, Ontario									
Population	327.2	327.4	...	0.2	1.5	1.9	0.1	0.5	0.6
Labour force	208.0	207.1	1.6	-0.9	6.0	2.5	-0.4	3.0	1.2
Employment	194.4	193.4	1.6	-1.0	6.4	5.0	-0.5	3.4	2.7
Unemployment	13.6	13.6	0.8	0.0	-0.4	-2.7	0.0	-2.9	-16.6
Participation rate	63.6	63.3	0.5	-0.3	1.6	0.4
Unemployment rate	6.5	6.6	0.4	0.1	-0.4	-1.4
Employment rate	59.4	59.1	0.5	-0.3	1.7	1.2

See footnotes at the end of the table.

Table 5-1 – continued

Labour force characteristics by census metropolitan area (seasonally adjusted) — 3 month moving average

	September 2006	October 2006	S.E. ¹	Change from			Percent change from		
				last month	last December	twelve months ago	last month	last December	twelve months ago
in thousands (except rates)									
Greater Sudbury / Grand Sudbury, Ontario									
Population	132.6	132.6	...	0.0	0.3	0.4	0.0	0.2	0.3
Labour force	86.1	85.4	0.8	-0.7	4.7	4.2	-0.8	5.8	5.2
Employment	79.4	78.8	0.8	-0.6	4.0	3.8	-0.8	5.3	5.1
Unemployment	6.7	6.6	0.4	-0.1	0.7	0.4	-1.5	11.9	6.5
Participation rate	64.9	64.4	0.6	-0.5	3.4	3.0
Unemployment rate	7.8	7.7	0.4	-0.1	0.4	0.1
Employment rate	59.9	59.4	0.6	-0.5	2.9	2.7
Thunder Bay, Ontario									
Population	104.3	104.3	...	0.0	0.1	0.2	0.0	0.1	0.2
Labour force	67.2	66.5	0.6	-0.7	0.0	-1.6	-1.0	0.0	-2.3
Employment	61.7	61.2	0.7	-0.5	-1.1	-2.5	-0.8	-1.8	-3.9
Unemployment	5.5	5.2	0.3	-0.3	1.0	0.8	-5.5	23.8	18.2
Participation rate	64.4	63.8	0.6	-0.6	0.0	-1.6
Unemployment rate	8.2	7.8	0.5	-0.4	1.5	1.3
Employment rate	59.2	58.7	0.6	-0.5	-1.1	-2.5
Windsor, Ontario									
Population	270.8	270.9	...	0.1	1.6	2.2	0.0	0.6	0.8
Labour force	186.2	184.8	1.4	-1.4	9.1	10.4	-0.8	5.2	6.0
Employment	169.7	168.5	1.5	-1.2	4.8	7.0	-0.7	2.9	4.3
Unemployment	16.5	16.3	0.8	-0.2	4.3	3.4	-1.2	35.8	26.4
Participation rate	68.8	68.2	0.5	-0.6	3.0	3.3
Unemployment rate	8.9	8.8	0.4	-0.1	2.0	1.4
Employment rate	62.7	62.2	0.6	-0.5	1.4	2.1
Winnipeg, Manitoba									
Population	572.1	572.2	...	0.1	2.4	2.6	0.0	0.4	0.5
Labour force	402.0	403.0	1.4	1.0	10.8	11.6	0.2	2.8	3.0
Employment	384.1	385.5	1.4	1.4	10.2	13.3	0.4	2.7	3.6
Unemployment	17.9	17.5	0.8	-0.4	0.6	-1.7	-2.2	3.6	-8.9
Participation rate	70.3	70.4	0.2	0.1	1.6	1.7
Unemployment rate	4.5	4.3	0.2	-0.2	0.0	-0.6
Employment rate	67.1	67.4	0.2	0.3	1.5	2.1
Regina, Saskatchewan									
Population	161.1	161.2	...	0.1	0.5	0.6	0.1	0.3	0.4
Labour force	117.4	117.8	0.7	0.4	5.9	4.9	0.3	5.3	4.3
Employment	111.5	112.1	0.7	0.6	5.9	5.0	0.5	5.6	4.7
Unemployment	5.9	5.6	0.3	-0.3	-0.1	-0.3	-5.1	-1.8	-5.1
Participation rate	72.9	73.1	0.4	0.2	3.5	2.8
Unemployment rate	5.0	4.8	0.3	-0.2	-0.3	-0.4
Employment rate	69.2	69.5	0.5	0.3	3.4	2.8
Saskatoon, Saskatchewan									
Population	188.3	188.5	...	0.2	0.7	0.9	0.1	0.4	0.5
Labour force	132.9	134.0	0.8	1.1	2.3	2.1	0.8	1.7	1.6
Employment	127.5	129.0	0.8	1.5	4.6	4.6	1.2	3.7	3.7
Unemployment	5.4	5.0	0.4	-0.4	-2.4	-2.5	-7.4	-32.4	-33.3
Participation rate	70.6	71.1	0.4	0.5	1.0	0.8
Unemployment rate	4.1	3.7	0.3	-0.4	-1.9	-2.0
Employment rate	67.7	68.4	0.4	0.7	2.2	2.1

See footnotes at the end of the table.

Table 5-1 – continued

Labour force characteristics by census metropolitan area (seasonally adjusted) — 3 month moving average

	September 2006	October 2006	S.E. ¹	Change from			Percent change from		
				last month	last December	twelve months ago	last month	last December	twelve months ago
in thousands (except rates)									
Calgary, Alberta									
Population	891.1	894.9	...	3.8	29.6	34.4	0.4	3.4	4.0
Labour force	681.8	688.4	3.2	6.6	46.6	57.9	1.0	7.3	9.2
Employment	657.4	666.4	3.2	9.0	53.3	61.6	1.4	8.7	10.2
Unemployment	24.3	22.0	1.4	-2.3	-6.7	-3.7	-9.5	-23.3	-14.4
Participation rate	76.5	76.9	0.4	0.4	2.7	3.6
Unemployment rate	3.6	3.2	0.2	-0.4	-1.3	-0.9
Employment rate	73.8	74.5	0.4	0.7	3.6	4.2
Edmonton, Alberta									
Population	840.8	844.1	...	3.3	24.1	27.8	0.4	2.9	3.4
Labour force	588.3	589.4	3.2	1.1	21.0	15.7	0.2	3.7	2.7
Employment	563.2	565.5	3.2	2.3	22.2	17.7	0.4	4.1	3.2
Unemployment	25.1	23.9	1.4	-1.2	-1.2	-2.0	-4.8	-4.8	-7.7
Participation rate	70.0	69.8	0.4	-0.2	0.5	-0.5
Unemployment rate	4.3	4.1	0.2	-0.2	-0.3	-0.4
Employment rate	67.0	67.0	0.4	0.0	0.7	-0.1
Abbotsford, British Columbia									
Population	128.7	129.0	...	0.3	3.2	3.6	0.2	2.5	2.9
Labour force	85.3	86.0	0.8	0.7	0.6	4.0	0.8	0.7	4.9
Employment	81.8	82.4	0.8	0.6	1.8	4.6	0.7	2.2	5.9
Unemployment	3.4	3.6	0.3	0.2	-1.2	-0.6	5.9	-25.0	-14.3
Participation rate	66.3	66.7	0.6	0.4	-1.2	1.3
Unemployment rate	4.0	4.2	0.4	0.2	-1.4	-0.9
Employment rate	63.6	63.9	0.6	0.3	-0.2	1.9
Vancouver, British Columbia									
Population	1,866.8	1,869.7	...	2.9	29.4	36.3	0.2	1.6	2.0
Labour force	1,253.2	1,256.5	4.7	3.3	28.7	42.4	0.3	2.3	3.5
Employment	1,201.8	1,205.2	4.7	3.4	35.4	54.9	0.3	3.0	4.8
Unemployment	51.4	51.3	2.4	-0.1	-6.7	-12.5	-0.2	-11.6	-19.6
Participation rate	67.1	67.2	0.3	0.1	0.5	1.0
Unemployment rate	4.1	4.1	0.2	0.0	-0.6	-1.2
Employment rate	64.4	64.5	0.3	0.1	0.9	1.8
Victoria, British Columbia									
Population	279.1	279.6	...	0.5	4.7	5.5	0.2	1.7	2.0
Labour force	181.9	181.6	1.4	-0.3	4.6	0.6	-0.2	2.6	0.3
Employment	175.2	174.4	1.5	-0.8	5.1	1.5	-0.5	3.0	0.9
Unemployment	6.7	7.2	0.6	0.5	-0.4	-0.8	7.5	-5.3	-10.0
Participation rate	65.2	64.9	0.5	-0.3	0.5	-1.1
Unemployment rate	3.7	4.0	0.3	0.3	-0.3	-0.4
Employment rate	62.8	62.4	0.5	-0.4	0.8	-0.7

1. Average standard error of change in two consecutive months (see "Sampling Errors" in Data Quality for further explanations).

Note(s): Related CANSIM table 282-0090

Table 5-2
Labour force characteristics by census metropolitan area (seasonally adjusted) — Monthly

	September 2006	October 2006	S.E. ¹	Change from			Percent change from		
				last month	last December	twelve months ago	last month	last December	twelve months ago
in thousands (except rates)									
Montréal, Quebec									
Population	3,012.1	3,015.4	...	3.3	31.2	37.0	0.1	1.0	1.2
Labour force	2,050.6	2,050.8	15.3	0.2	32.4	35.5	0.0	1.6	1.8
Employment	1,885.8	1,891.7	15.2	5.9	68.1	59.6	0.3	3.7	3.3
Unemployment	164.9	159.1	11.6	-5.8	-35.7	-24.1	-3.5	-18.3	-13.2
Participation rate	68.1	68.0	0.5	-0.1	0.4	0.3
Unemployment rate	8.0	7.8	0.6	-0.2	-1.9	-1.3
Employment rate	62.6	62.7	0.5	0.1	1.6	1.2
Toronto, Ontario									
Population	4,392.3	4,399.1	...	6.8	71.0	85.1	0.2	1.6	2.0
Labour force	2,999.8	3,006.5	18.7	6.7	35.2	-22.0	0.2	1.2	-0.7
Employment	2,795.1	2,804.2	18.9	9.1	20.4	-26.5	0.3	0.7	-0.9
Unemployment	204.7	202.3	13.2	-2.4	14.7	4.6	-1.2	7.8	2.3
Participation rate	68.3	68.3	0.4	0.0	-0.4	-1.9
Unemployment rate	6.8	6.7	0.4	-0.1	0.4	0.2
Employment rate	63.6	63.7	0.4	0.1	-0.6	-1.9
Vancouver, British Columbia									
Population	1,869.7	1,872.5	...	2.8	29.1	35.4	0.1	1.6	1.9
Labour force	1,255.0	1,262.7	9.9	7.7	32.0	49.5	0.6	2.6	4.1
Employment	1,199.1	1,212.5	9.9	13.4	41.3	56.2	1.1	3.5	4.9
Unemployment	56.0	50.2	5.8	-5.8	-9.3	-6.7	-10.4	-15.6	-11.8
Participation rate	67.1	67.4	0.5	0.3	0.6	1.4
Unemployment rate	4.5	4.0	0.5	-0.5	-0.8	-0.7
Employment rate	64.1	64.8	0.5	0.7	1.3	1.9

1. Average standard error of change in two consecutive months (see "Sampling Errors" in Data Quality for further explanations).

Note(s): Related CANSIM table 282-0091

Table 6-1

Labour force characteristics by province and economic region¹, unadjusted for seasonality, 3 month moving average ending in October 2005 and October 2006

	Population	Labour force			Participation rate	Unemployment rate	Employment rate
		Labour force	Employment	Unemployment			
	in thousands						
Canada ²							
2005	25,893.7	17,503.8	16,368.2	1,135.6	67.6	6.5	63.2
2006	26,265.6	17,746.9	16,660.4	1,086.5	67.6	6.1	63.4
Newfoundland and Labrador							
2005	429.3	257.6	221.3	36.4	60.0	14.1	51.5
2006	427.1	258.8	225.7	33.1	60.6	12.8	52.8
Avalon Peninsula [1010]							
2005	209.3	130.8	116.1	14.7	62.5	11.2	55.5
2006	210.0	135.3	120.9	14.4	64.4	10.6	57.6
South Coast-Burin Peninsula [1020]							
2005	34.3	18.9	14.6	4.3	55.1	22.8	42.6
2006	33.5	18.7	15.1	3.6	55.8	19.3	45.1
West Coast-Northern Peninsula-Labrador [1030]							
2005	89.1	53.9	45.8	8.1	60.5	15.0	51.4
2006	88.3	55.2	47.7	7.6	62.5	13.8	54.0
Notre Dame-Central Bonavista Bay [1040]							
2005	96.6	54.1	44.7	9.4	56.0	17.4	46.3
2006	95.3	49.6	42.0	7.6	52.0	15.3	44.1
Prince Edward Island							
2005	111.7	78.3	71.5	6.8	70.1	8.7	64.0
2006	112.5	78.2	71.6	6.6	69.5	8.4	63.6
Nova Scotia							
2005	761.4	487.0	450.5	36.5	64.0	7.5	59.2
2006	763.1	483.0	447.4	35.6	63.3	7.4	58.6
Cape Breton [1210]							
2005	117.4	68.4	58.7	9.7	58.3	14.2	50.0
2006	116.8	64.6	56.5	8.1	55.3	12.5	48.4
North Shore [1220]							
2005	131.2	80.2	74.8	5.4	61.1	6.7	57.0
2006	131.0	80.4	73.2	7.2	61.4	9.0	55.9
Annapolis Valley [1230]							
2005	99.4	62.0	57.3	4.7	62.4	7.6	57.6
2006	99.8	60.6	56.2	4.4	60.7	7.3	56.3
Southern [1240]							
2005	103.8	62.8	56.3	6.5	60.5	10.4	54.2
2006	103.7	61.5	55.7	5.8	59.3	9.4	53.7
Halifax [1250]							
2005	309.6	213.7	203.4	10.3	69.0	4.8	65.7
2006	311.8	216.0	205.8	10.2	69.3	4.7	66.0
New Brunswick							
2005	611.1	394.8	358.6	36.1	64.6	9.1	58.7
2006	611.2	390.2	359.8	30.3	63.8	7.8	58.9
Campbellton-Miramichi [1310]							
2005	137.7	84.0	72.6	11.4	61.0	13.6	52.7
2006	136.3	79.8	70.5	9.3	58.5	11.7	51.7
Moncton-Richibucto [1320]							
2005	160.5	108.6	99.6	9.0	67.7	8.3	62.1
2006	161.7	106.2	98.7	7.5	65.7	7.1	61.0
Saint John-St. Stephen [1330]							
2005	141.2	88.0	81.5	6.5	62.3	7.4	57.7
2006	141.4	88.3	82.8	5.4	62.4	6.1	58.6

See footnotes at the end of the table.

Table 6-1 – continued

Labour force characteristics by province and economic region¹, unadjusted for seasonality, 3 month moving average ending in October 2005 and October 2006

	Population	Labour force			Participation rate	Unemployment rate	Employment rate
		Labour force	Employment	Unemployment			
in thousands							
Fredericton-Oromocto [1340]							
2005	103.2	71.1	65.4	5.7	68.9	8.0	63.4
2006	103.7	71.0	66.1	4.9	68.5	6.9	63.7
Edmundston-Woodstock [1350]							
2005	68.5	43.1	39.5	3.6	62.9	8.4	57.7
2006	68.1	44.9	41.7	3.2	65.9	7.1	61.2
Quebec							
2005	6,198.0	4,100.4	3,778.1	322.3	66.2	7.9	61.0
2006	6,266.5	4,124.1	3,819.6	304.5	65.8	7.4	61.0
Gaspésie-Îles-de-la-Madeleine [2410]							
2005	80.5	41.8	36.0	5.8	51.9	13.9	44.7
2006	80.8	42.6	36.2	6.4	52.7	15.0	44.8
Bas-Saint-Laurent [2415]							
2005	166.8	102.4	95.1	7.3	61.4	7.1	57.0
2006	167.2	103.7	96.3	7.4	62.0	7.1	57.6
Capitale-Nationale [2420]							
2005	555.8	365.3	347.0	18.2	65.7	5.0	62.4
2006	561.0	360.9	341.3	19.6	64.3	5.4	60.8
Chaudière-Appalaches [2425]							
2005	322.7	221.2	209.9	11.3	68.5	5.1	65.0
2006	325.6	219.4	208.3	11.2	67.4	5.1	64.0
Estrie [2430]							
2005	244.4	157.1	147.2	9.9	64.3	6.3	60.2
2006	246.9	157.8	144.1	13.7	63.9	8.7	58.4
Centre-du-Québec [2433]							
2005	182.4	124.8	115.0	9.8	68.4	7.9	63.0
2006	184.2	125.3	118.4	7.0	68.0	5.6	64.3
Montérégie [2435]							
2005	1,099.0	744.8	695.0	49.8	67.8	6.7	63.2
2006	1,112.9	757.7	701.9	55.8	68.1	7.4	63.1
Montréal [2440]							
2005	1,572.7	1,039.5	928.9	110.6	66.1	10.6	59.1
2006	1,586.4	1,057.4	959.5	97.9	66.7	9.3	60.5
Laval [2445]							
2005	300.9	206.1	190.3	15.8	68.5	7.7	63.2
2006	305.5	207.7	195.0	12.7	68.0	6.1	63.8
Lanaudière [2450]							
2005	337.7	231.1	216.8	14.4	68.4	6.2	64.2
2006	345.7	230.8	220.2	10.6	66.8	4.6	63.7
Laurentides [2455]							
2005	408.8	272.8	251.4	21.4	66.7	7.8	61.5
2006	417.9	267.2	250.0	17.2	63.9	6.4	59.8
Outaouais [2460]							
2005	281.1	198.4	184.6	13.8	70.6	7.0	65.7
2006	286.2	198.2	188.3	9.9	69.3	5.0	65.8
Abitibi-Témiscamingue [2465]							
2005	115.2	70.0	63.6	6.4	60.8	9.1	55.2
2006	115.5	75.0	68.8	6.2	64.9	8.3	59.6
Mauricie [2470]							
2005	215.5	130.9	120.3	10.7	60.7	8.2	55.8
2006	216.7	127.6	116.5	11.1	58.9	8.7	53.8

See footnotes at the end of the table.

Table 6-1 – continued

Labour force characteristics by province and economic region¹, unadjusted for seasonality, 3 month moving average ending in October 2005 and October 2006

	Population	Labour force			Participation rate	Unemployment rate	Employment rate
		Labour force	Employment	Unemployment			
in thousands							
Saguenay-Lac-Saint-Jean [2475]							
2005	224.7	138.5	125.6	12.9	61.6	9.3	55.9
2006	224.4	135.8	121.5	14.3	60.5	10.5	54.1
Côte-Nord and Nord-du-Québec [2480, 2490]							
2005	89.9	55.7	51.4	4.3	62.0	7.7	57.2
2006	89.6	56.9	53.4	3.5	63.5	6.2	59.6
Ontario							
2005	10,113.3	6,913.1	6,466.8	446.3	68.4	6.5	63.9
2006	10,259.7	6,974.3	6,525.4	448.9	68.0	6.4	63.6
Ottawa [3510]							
2005	972.3	671.4	625.7	45.7	69.1	6.8	64.4
2006	979.9	671.0	632.4	38.6	68.5	5.8	64.5
Kingston-Pembroke [3515]							
2005	356.1	221.5	208.5	13.0	62.2	5.9	58.6
2006	358.1	215.5	202.0	13.5	60.2	6.3	56.4
Muskoka-Kawarthas [3520]							
2005	303.2	181.5	168.9	12.6	59.9	6.9	55.7
2006	306.8	196.3	185.1	11.1	64.0	5.7	60.3
Toronto [3530]							
2005	4,536.0	3,175.0	2,962.0	212.9	70.0	6.7	65.3
2006	4,628.2	3,167.5	2,948.3	219.2	68.4	6.9	63.7
Kitchener-Waterloo-Barrie [3540]							
2005	934.6	680.7	643.3	37.4	72.8	5.5	68.8
2006	953.8	698.8	663.4	35.3	73.3	5.1	69.6
Hamilton-Niagara Peninsula [3550]							
2005	1,112.9	741.1	694.2	46.9	66.6	6.3	62.4
2006	1,125.0	746.0	699.7	46.3	66.3	6.2	62.2
London [3560]							
2005	501.9	349.4	327.4	22.0	69.6	6.3	65.2
2006	507.2	356.2	334.9	21.3	70.2	6.0	66.0
Windsor-Sarnia [3570]							
2005	520.4	340.2	316.2	24.1	65.4	7.1	60.8
2006	523.3	358.4	331.7	26.7	68.5	7.4	63.4
Stratford-Bruce Peninsula [3580]							
2005	245.3	165.6	159.6	6.0	67.5	3.6	65.1
2006	246.8	172.0	163.9	8.1	69.7	4.7	66.4
Northeast [3590]							
2005	452.9	274.1	255.6	18.5	60.5	6.7	56.4
2006	453.5	278.7	257.4	21.3	61.5	7.6	56.8
Northwest [3595]							
2005	177.7	112.6	105.4	7.2	63.4	6.4	59.3
2006	177.1	113.9	106.5	7.4	64.3	6.5	60.1
Manitoba							
2005	890.0	612.5	583.9	28.6	68.8	4.7	65.6
2006	893.0	618.6	591.8	26.9	69.3	4.3	66.3
Southeast [4610]							
2005	73.6	55.3	52.7	2.6	75.1	4.7	71.6
2006	75.0	53.6	51.7	2.0	71.5	3.7	68.9
South Central [4620]							
2005	42.1	27.7	27.1	0.6	65.8	2.2	64.4
2006	42.5	28.2	27.1	1.0	66.4	3.5	63.8

See footnotes at the end of the table.

Table 6-1 – continued

Labour force characteristics by province and economic region¹, unadjusted for seasonality, 3 month moving average ending in October 2005 and October 2006

	Population	Labour force			Participation rate	Unemployment rate	Employment rate
		Labour force	Employment	Unemployment			
in thousands							
Southwest [4630]							
2005	81.8	51.0	49.0	2.0	62.3	3.9	59.9
2006	81.8	52.3	50.5	1.9	63.9	3.6	61.7
North Central [4640]							
2005	35.4	24.5	23.8	0.7	69.2	2.9	67.2
2006	35.5	22.8	22.3	x	64.2	x	62.8
Winnipeg [4650]							
2005	527.6	362.6	343.1	19.5	68.7	5.4	65.0
2006	529.5	373.6	355.4	18.2	70.6	4.9	67.1
Interlake [4660]							
2005	68.2	49.1	47.3	1.8	72.0	3.7	69.4
2006	68.8	46.5	45.4	1.1	67.6	2.4	66.0
Parklands and North [4670, 4680]							
2005	61.2	42.3	41.0	1.3	69.1	3.1	67.0
2006	59.9	41.6	39.3	2.3	69.4	5.5	65.6
Saskatchewan							
2005	748.8	511.3	484.1	27.1	68.3	5.3	64.7
2006	746.1	523.5	500.8	22.7	70.2	4.3	67.1
Regina-Moose Mountain [4710]							
2005	219.4	154.9	147.7	7.2	70.6	4.6	67.3
2006	219.1	158.0	151.4	6.7	72.1	4.2	69.1
Swift Current-Moose Jaw [4720]							
2005	83.1	53.3	50.5	2.8	64.1	5.3	60.8
2006	82.4	58.0	55.4	2.7	70.4	4.7	67.2
Saskatoon-Biggar [4730]							
2005	230.7	161.3	152.5	8.8	69.9	5.5	66.1
2006	231.0	164.5	158.3	6.2	71.2	3.8	68.5
Yorkton-Melville [4740]							
2005	65.6	44.0	42.2	1.7	67.1	3.9	64.3
2006	64.4	42.2	40.6	1.7	65.5	4.0	63.0
Prince Albert and Northern [4750, 4760]							
2005	150.0	97.8	91.2	6.6	65.2	6.7	60.8
2006	149.1	100.6	95.2	5.4	67.5	5.4	63.8
Alberta							
2005	2,567.9	1,869.8	1,796.6	73.2	72.8	3.9	70.0
2006	2,662.4	1,967.5	1,898.0	69.4	73.9	3.5	71.3
Lethbridge-Medicine Hat [4810]							
2005	195.6	145.5	140.6	4.9	74.4	3.4	71.9
2006	201.8	143.3	138.9	4.4	71.0	3.1	68.8
Camrose-Drumheller [4820]							
2005	147.7	107.3	104.0	3.3	72.6	3.1	70.4
2006	151.7	112.2	108.5	3.8	74.0	3.4	71.5
Calgary [4830]							
2005	924.5	677.1	648.8	28.3	73.2	4.2	70.2
2006	962.6	742.2	717.7	24.6	77.1	3.3	74.6
Banff-Jasper-Rocky Mountain House [4840]							
2005	64.7	49.0	47.6	1.5	75.7	3.1	73.6
2006	66.4	51.6	50.0	1.6	77.7	3.1	75.3
Red Deer [4850]							
2005	131.6	98.3	94.7	3.6	74.7	3.7	72.0
2006	137.3	102.4	99.2	3.2	74.6	3.1	72.3

See footnotes at the end of the table.

Table 6-1 – continued

Labour force characteristics by province and economic region¹, unadjusted for seasonality, 3 month moving average ending in October 2005 and October 2006

	Population	Labour force			Participation rate	Unemployment rate	Employment rate
		Labour force	Employment	Unemployment			
in thousands							
Edmonton [4860]							
2005	847.2	599.8	574.8	25.0	70.8	4.2	67.8
2006	876.2	617.3	593.5	23.8	70.5	3.9	67.7
Athabasca-Grande Prairie-Peace River [4870]							
2005	172.8	130.2	126.0	4.2	75.3	3.2	72.9
2006	178.5	133.6	128.7	4.9	74.8	3.7	72.1
Wood Buffalo-Cold Lake [4880]							
2005	83.9	62.5	60.1	2.4	74.5	3.8	71.6
2006	88.0	64.9	61.6	3.3	73.8	5.1	70.0
British Columbia							
2005	3,462.0	2,279.0	2,156.8	122.2	65.8	5.4	62.3
2006	3,524.0	2,328.8	2,220.5	108.3	66.1	4.7	63.0
Vancouver Island and Coast [5910]							
2005	603.2	383.7	360.9	22.8	63.6	5.9	59.8
2006	614.5	390.5	370.2	20.2	63.5	5.2	60.2
Lower Mainland-Southwest [5920]							
2005	2,085.2	1,381.3	1,308.1	73.2	66.2	5.3	62.7
2006	2,128.1	1,423.5	1,362.1	61.4	66.9	4.3	64.0
Thompson-Okanagan [5930]							
2005	406.0	267.5	254.5	13.0	65.9	4.9	62.7
2006	416.0	271.3	258.5	12.8	65.2	4.7	62.1
Kootenay [5940]							
2005	122.3	75.3	71.1	4.3	61.6	5.7	58.1
2006	122.1	74.4	70.3	4.1	60.9	5.5	57.6
Cariboo [5950]							
2005	126.7	86.2	81.8	4.4	68.0	5.1	64.6
2006	125.5	87.0	82.4	4.6	69.3	5.3	65.7
North Coast and Nechako [5960, 5970]							
2005	68.6	50.7	47.6	3.1	73.9	6.1	69.4
2006	67.1	45.7	42.4	3.3	68.1	7.2	63.2
Northeast [5980]							
2005	49.9	34.2	32.7	1.5	68.5	4.4	65.5
2006	50.8	36.4	34.6	1.9	71.7	5.2	68.1

1. For geographic descriptions of economic regions, refer to the Guide to the Labour Force Survey (catalogue number 71-543-GIE).

2. Estimates for Canada are a sum of the provincial totals and exclude estimates from Yukon Territory, Northwest Territories and Nunavut.

Note(s): Related CANSIM table 282-0054.

Table 6-2
Labour force characteristics by territories, unadjusted for seasonality, 3 month moving average ending in October 2005 and October 2006

	Population	Labour force			Participation rate	Unemployment rate	Employment rate
		Labour force	Employment	Unemployment			
in thousands							
Yukon Territory ¹							
2005	21.5	16.1	15.3	0.7	74.9	4.3	71.2
2006	21.5	16.0	15.4	0.6	74.4	3.8	71.6
Northwest Territories ²							
2005	31.6	24.0	22.8	1.2	75.9	5.0	72.2
2006	30.9	23.7	22.6	1.1	76.7	4.6	73.1
Nunavut - 10 largest communities ³							
2005	13.7	8.8	7.6	1.1	64.1	13.1	55.7
2006	13.9	9.7	8.5	1.2	69.7	12.0	61.3

1. Since 1992, the Labour force survey has been administered in the Yukon Territory, using an alternative methodology that accommodates some of the operational difficulties inherent to remote locales. These estimates are not included in national totals.
2. Since 2001, the Labour force survey has been administered in the Northwest Territories, using an alternative methodology that accommodates some of the operational difficulties inherent to remote locales. These estimates are not included in national totals.
3. Since 2004, the Labour force survey has been administered in Nunavut, using an alternative methodology that accommodates some of the operational difficulties inherent to remote locales. These estimates are not included in national totals. The 10 largest communities are Iqaluit, Cambridge Bay, Baker Lake, Arviat, Rankin Inlet, Kugluktuk, Pond Inlet, Cape Dorset, Pangnirtung, Igloolik.

Note(s): Related CANSIM table 282-0054.

Table 7
Average usual hours and wages of employees by selected characteristics, Canada, unadjusted for seasonality

	Employees				Full-time			Part-time		
	Number	Average weekly hours	Average weekly wages	Average hourly wages	Number	Average weekly hours	Average weekly wages	Number	Average weekly hours	Average weekly wages
	'000		\$		'000		\$	'000		\$
October 2006										
15 years and over	14,145.3	35.6	733.76	19.92	11,611.8	39.6	839.30	2,533.5	17.3	250.08
15 to 24 years	2,406.4	28.1	348.29	11.56	1,294.4	39.2	521.21	1,112.0	15.1	147.00
25 years and over	11,739.0	37.1	812.78	21.64	10,317.4	39.6	879.20	1,421.5	19.0	330.71
Men	7,200.6	38.3	844.73	21.54	6,455.2	40.8	917.27	745.3	16.4	216.44
Women	6,944.8	32.8	618.71	18.24	5,156.6	38.0	741.68	1,788.2	17.7	264.10
Union coverage										
Union coverage	4,472.0	35.9	836.40	23.02	3,836.2	38.7	913.23	635.9	18.9	372.91
No union coverage	9,673.3	35.4	686.32	18.49	7,775.7	40.0	802.82	1,897.6	16.7	208.92
Job permanency										
Permanent	12,366.9	36.5	769.65	20.53	10,586.1	39.6	853.91	1,780.8	18.2	268.76
Temporary	1,778.5	29.4	484.25	15.71	1,025.8	39.9	688.52	752.7	15.0	205.87
Occupation										
Management	1,015.7	40.2	1,260.54	31.33	984.3	40.9	1,287.30	31.4	19.1	422.31
Business, finance and administrative	2,753.3	35.2	686.42	19.05	2,339.1	38.3	760.13	414.2	17.8	270.10
Natural and applied sciences	1,002.7	38.7	1,085.01	27.98	967.7	39.4	1,109.52	35.0	19.1	407.43
Health	854.0	33.0	771.57	23.31	625.5	37.7	886.23	228.5	20.1	457.68
Social science, education, government service and religion	1,277.3	33.7	871.09	25.77	1,010.6	38.2	994.89	266.6	16.8	401.84
Art, culture, recreation and sport	295.1	31.0	710.40	21.24	207.6	38.7	926.60	87.6	12.7	198.02
Sales and service	3,603.1	30.9	441.64	13.32	2,326.2	38.6	588.20	1,276.9	17.0	174.66
Trades, transport and equipment operators	2,053.8	40.6	809.92	19.79	1,940.8	41.9	843.06	113.1	17.8	241.16
Occupations unique to primary industry	309.6	43.1	723.52	16.40	276.2	46.7	791.82	33.4	14.0	159.10
Occupations unique to processing, manufacturing and utilities	980.8	39.1	674.24	17.05	933.9	40.2	697.87	46.8	17.2	203.06
October 2005										
15 years and over	13,775.8	35.5	711.08	19.33	11,224.0	39.7	817.69	2,551.7	17.2	242.13
15 to 24 years	2,339.0	27.6	325.12	11.00	1,201.4	39.5	498.44	1,137.6	15.1	142.07
25 years and over	11,436.8	37.1	790.01	21.03	10,022.6	39.7	855.96	1,414.2	18.8	322.62
Men	7,027.3	38.3	819.11	20.89	6,249.9	41.0	894.99	777.5	16.2	209.21
Women	6,748.5	32.6	598.57	17.70	4,974.2	38.0	720.57	1,774.3	17.6	256.55
Union coverage										
Union coverage	4,399.6	36.0	810.02	22.32	3,756.4	38.9	885.26	643.2	19.0	370.67
No union coverage	9,376.2	35.3	664.65	17.93	7,467.7	40.1	783.70	1,908.5	16.5	198.81
Job permanency										
Permanent	11,991.8	36.5	746.49	19.91	10,206.6	39.6	831.45	1,785.2	18.3	260.70
Temporary	1,784.0	29.1	473.04	15.43	1,017.4	40.1	679.60	766.5	14.6	198.86
Occupation										
Management	997.4	40.1	1,199.71	29.89	964.7	40.8	1,227.35	32.6	19.0	382.78
Business, finance and administrative	2,623.6	35.1	664.19	18.47	2,233.7	38.2	735.48	389.9	17.6	255.73
Natural and applied sciences	951.6	38.6	1,057.18	27.32	917.1	39.4	1,083.15	34.5	18.3	366.15
Health	856.6	33.0	757.70	22.77	627.0	37.8	874.28	229.5	20.0	439.20
Social science, education, government service and religion	1,231.7	33.8	865.95	25.40	970.3	38.4	988.71	261.4	16.8	410.25
Art, culture, recreation and sport	314.5	30.5	650.19	19.82	210.0	38.8	861.54	104.5	13.8	225.38
Sales and service	3,423.4	30.5	426.73	12.96	2,139.7	38.7	582.73	1,283.7	16.8	166.71
Trades, transport and equipment operators	2,046.9	40.5	773.35	18.92	1,914.1	42.1	810.81	132.7	17.6	233.10
Occupations unique to primary industry	294.7	42.9	694.83	15.91	260.8	46.7	763.66	34.0	14.1	166.64
Occupations unique to processing, manufacturing and utilities	1,035.5	39.3	658.47	16.61	986.5	40.4	680.16	48.9	18.5	221.10

Note(s): Related CANSIM tables 282-0023, 282-0069, 282-0073

Table 8
Regional unemployment rates used by the Employment Insurance Program,¹ seasonally adjusted, 3 month moving average

Region	Effective from November 5, 2006 to December 2, 2006 Unemployment rate
	Percent
Newfoundland and Labrador	
01. St. John's	8.0
02. Newfoundland and Labrador	19.1
Prince Edward Island	
03. Prince Edward Island	11.0
Nova Scotia	
04. Eastern Nova Scotia	13.4
05. Western Nova Scotia	9.8
06. Halifax	5.2
New Brunswick	
07. Fredericton-Moncton-Saint John	6.3
08. Madawaska-Charlotte ²	10.9
09. Restigouche-Albert	14.3
Quebec	
10. Gaspésie-Îles-de-la-Madeleine	18.9
11. Québec	5.8
12. Trois-Rivières	8.1
13. South Central Quebec	6.9
14. Sherbrooke	8.0
15. Montérégie	8.6
16. Montréal	8.1
17. Central Quebec	8.6
18. Northwestern Quebec	11.1
19. Bas-Saint-Laurent-Côte-Nord ³	12.1
20. Gatineau	4.8
21. Saguenay	8.7
Ontario	
22. Ottawa	5.1
23. Eastern Ontario	7.6
24. Kingston	5.7
25. Central Ontario	6.3
26. Oshawa	6.8
27. Toronto	6.6
28. Hamilton	6.5
29. St. Catharines	6.6
30. London	6.8
31. Niagara	7.9
32. Windsor	8.9
33. Kitchener	5.3
34. Huron	7.2
35. South Central Ontario	4.7
36. Sudbury	7.4
37. Thunder Bay	7.9
38. Northern Ontario	10.7
Manitoba	
39. Winnipeg	4.4
40. Southern Manitoba	4.9
41. Northern Manitoba	26.0

See footnotes at the end of the table.

Table 8 – continued

Regional unemployment rates used by the Employment Insurance Program,¹ seasonally adjusted, 3 month moving average

Region	Effective from November 5, 2006 to December 2, 2006 Unemployment rate
	Percent
Saskatchewan	
42. Regina	4.7
43. Saskatoon	3.8
44. Southern Saskatchewan	6.7
45. Northern Saskatchewan	14.4
Alberta	
46. Calgary	3.2
47. Edmonton	4.2
48. Northern Alberta	8.1
49. Southern Alberta	4.6
British Columbia	
50. Southern Interior British Columbia	6.6
51. Abbotsford	4.2
52. Vancouver	4.2
53. Victoria	4.5
54. Southern Coastal British Columbia	7.2
55. Northern British Columbia	9.7
Territories	
56. Yukon Territory ⁴	25.0
57. Northwest Territories ⁴	25.0
58. Nunavut ⁴	25.0

1. The boundaries of these regions are determined by Human Resources and Skills Development Canada (HRSDC). For geographic descriptions and maps of employment insurance regions, see the HRSDC website: <http://www14.hrdc-drhc.gc.ca/ei-ae/canadaei.htm>.
2. This unemployment rate has been determined using a transition formula prescribed in the EI Regulations. For further information, see: http://www.hrsdc.gc.ca/en/cs/comm/news/2000/000913a_e.shtml.
3. This unemployment rate has been determined using a transition formula prescribed in the EI Regulations. For further information, see: http://www.hrsdc.gc.ca/en/cs/comm/news/2000/000913b_e.shtml.
4. This rate is provided by Human Resources and Skills Development Canada.

Data quality

About the Labour Force Survey

The statistics contained in this report are based on information obtained through a sample survey of 53,000 representative households across the country. The Labour Force Survey, started in November 1945, was taken at quarterly intervals until November 1952. It has been carried out monthly since then. The information generated by the survey has expanded considerably over the years with a major redesign of the survey content in 1976 and again in 1997, and provides a rich and detailed picture of the Canadian labour market.

The sample used in the Labour Force Survey has been designed to represent all persons in the population 15 years of age and over residing in the provinces of Canada, with the exception of the following: persons living on Indian reserves, full-time members of the armed forces and people living in institutions (for example, inmates of penal institutions and patients in hospitals or nursing homes who have resided in the institution for more than six months). Monthly estimates of employment, unemployment and persons not in the labour force refer to the specific week covered by the survey each month, normally the week containing the 15th day.

Definitions and explanations

The **labour force** is composed of those members of the civilian non-institutional population 15 years of age and over who, during the reference week, were employed or unemployed.

Employed persons are those who, during the reference week:

- (a) did any work at all
- (b) had a job but were not at work

A person is considered to be **full-time** if his/her usual hours at the main job are 30 or more hours per week. When the number of hours worked at the main job is usually less than 30 hours per week then he/she is considered to be **part-time**.

Unemployed persons are those who, during the reference week:

- (a) were without work, had actively looked for work in the past four weeks (ending with reference week), and were available for work;
- (b) had not actively looked for work in the past four weeks but were on temporary layoff and were available for work;
- (c) had not actively looked for work in the past four weeks but had a new job to start in four weeks or less from the reference week, and were available for work.

Persons in the civilian non-institutional population 15 years of age and over who, during the reference week, were neither employed nor unemployed are classified as **not in the labour force**.

The **unemployment rate** represents the number of unemployed persons expressed as a percentage of the labour force. The unemployment rate for a particular group (age, sex, etc.) is the number unemployed in that group expressed as a percentage of the labour force for that group.

The **participation rate** represents the labour force expressed as a percentage of the population 15 years of age and over. The participation rate for a particular group (age, sex, etc.) is the labour force in that group expressed as a percentage of the population for that group.

The **employment rate (formerly the employment/population ratio)** represents the number of persons employed expressed as a percentage of the population 15 years of age and over. The employment rate for a particular group (age, sex, etc.) is the number employed in that group expressed as a percentage of the population for that group.

The **part-time rate** represents the number of persons employed part-time expressed as a percentage of the employed. The part-time rate for a particular group (age, sex, etc.) is the number employed part-time in that group expressed as a percentage of the employed for that group.

All geographic regions are based on the 2001 Census boundaries.

Seasonal adjustment

Fluctuations in economic time series are caused by seasonal, cyclical and irregular movements. A seasonally adjusted series is one from which seasonal movements have been eliminated. Seasonal movements are defined as those which are caused by regular annual events such as climate, holidays, vacation periods and cycles related to crops, production and retail sales associated with Christmas and Easter. The seasonally adjusted series contains irregular as well as longer-term cyclical fluctuations.

The seasonally adjusted series are revised each year to take into account current data and to generate new forecast factors for the next twelve months. The data are therefore subject to slight revisions in future issues of this publication.

Sampling error

Estimates in this publication are based on the Labour Force Survey, a monthly survey of approximately 53,000 households across Canada. Because they are based on a sample survey, the estimates are subject to sampling error. Changes in the level of any estimates between two months can be the result of a true change or sampling variability. In most tables in this publication an indicator of the sampling error is provided. Two thirds of the time, a change greater than the sampling error indicates a real change. Movements in estimates that are smaller than the sampling error are less likely to reflect a real change and more likely to be due to sampling variability. While the above is true for monthly movements, one can have more confidence in a series of consecutive movements in the same direction, even though some of the monthly movements may be smaller than the sampling error.

For more detailed information about the Labour Force Survey, see the following documents:

- Overview of the Labour Force Survey
- Guide to the Labour Force Survey (71-543-G)
- Data quality statement
- Methodology of the Canadian Labour Force Survey (71-526-X)
- LFS *geographical maps*