



Catalogue no. 66-201-XIE

International Travel

2000



Statistics
Canada

Statistique
Canada

Canada

How to obtain more information

Specific inquiries about this product and related statistics or services should be directed to: Client Services, Culture, Tourism and the Centre for Education Statistics Division, (1-800-307-3382) Statistics Canada, Ottawa, Ontario, K1A 0T6 (telephone: (613) 951-7908).

For information on the wide range of data available from Statistics Canada, you can contact us by calling one of our toll-free numbers. You can also contact us by e-mail or by visiting our Web site.

National inquiries line	1 800 263-1136
National telecommunications device for the hearing impaired	1 800 363-7629
Depository Services Program inquiries	1 800 700-1033
Fax line for Depository Services Program	1 800 889-9734
E-mail inquiries	infostats@statcan.ca
Web site	www.statcan.ca

Ordering and subscription information

This product, Catalogue no. 66-201-XIE, is published annually in electronic format on the Statistics Canada Internet site at a price of CDN \$32.00. To obtain single issues or to subscribe visit our Web site at www.statcan.ca, and select Products and Services.

This product is also available in print through a Print-on-Demand service, at a price of CDN \$53.00 for a one-year subscription. The following additional shipping charges apply for delivery outside Canada:

	Single issue
United States	CDN \$ 6.00
Other countries	CDN \$ 10.00

All prices exclude sales taxes.

The printed version can be ordered by

- Phone (Canada and United States) **1 800 267-6677**
- Fax (Canada and United States) **1 877 287-4369**
- E-mail **order@statcan.ca**
- Mail Statistics Canada
Dissemination Division
Circulation Management
120 Parkdale Avenue
Ottawa, Ontario K1A 0T6
- And, in person at the Statistics Canada Regional Centre nearest you.

When notifying us of a change in your address, please provide both old and new addresses.

Standards of service to the public

Statistics Canada is committed to serving its clients in a prompt, reliable and courteous manner and in the official language of their choice. To this end, the Agency has developed standards of service which its employees observe in serving its clients. To obtain a copy of these service standards, please contact Statistics Canada toll free at 1 800 263-1136.



Statistics Canada

Culture, Tourism and the Centre for Education Statistics
International Travel Section

International Travel

2000

Published by authority of the Minister responsible for Statistics Canada

© Minister of Industry, 2001

All rights reserved. No part of this publication may be reproduced, stored in a retrieval system or transmitted in any form or by any means, electronic, mechanical, photocopying, recording or otherwise without prior written permission from Licence Services, Marketing Division, Statistics Canada, Ottawa, Ontario, Canada K1A 0T6.

November 2001

Catalogue no. 66-201-XIE

ISSN 1209-1251

Frequency: Annual

Ottawa

La version française de cette publication est disponible sur demande (n° 66-201-XIF)

Note of appreciation

Canada owes the success of its statistical system to a long-standing partnership between Statistics Canada, the citizens of Canada, its businesses, governments and other institutions. Accurate and timely statistical information could not be produced without their continued cooperation and goodwill.

Symbols

The following standard symbols are used in Statistics Canada publications:

- .. figures not available
- ... figures not appropriate or not applicable
- nil or zero
- amount too small to be expressed
- p preliminary figures
- r revised figures
- x confidential to meet secrecy requirements of the Statistics Act

This publication was prepared under the direction of:

Maryanne Webber, Director, Culture, Tourism and the Centre for Education Statistics

Brad Ruth, Assistant Director, Culture and Tourism

Jocelyn Lapierre, Chief, International Travel Section

Laurie McDougall, Senior Research Analyst, International Travel Section

Note:

Data contained in charts and tables of this publication may not add due to rounding.

Acknowledgements

We wish to acknowledge those persons within Statistics Canada whose advice and diligent assistance facilitated the progress and completion of this report.

Special thanks go to the staff of the International Travel Section of the Culture, Tourism and the Centre for Education Statistics Division, as well as to the Household Survey Methods Division, the Dissemination Division and to the Composition Unit.

The paper used in this publication meets the minimum requirements of American National Standard for Information Sciences – Permanence of Paper for Printed Library Materials, ANSI Z39.48 – 1984.



Table of Contents

	Page		Page
Highlights	5	Tables – Continued	
Introduction	6	United States Residents Entering Canada	
Overview of 2000	6	11. Person-trips by United States Residents Entering Canada, by Type of Transportation, Quarterly, 1991-2000	22
United States Market	7	12. Trip Characteristics of United States Residents Entering Canada and Staying One or More Nights, 1991-2000	23
Overseas Market	8	13. Person-trips, Person-nights and Expenditures of United States Residents Entering Canada and Staying One or More Nights, by Selected Trip Characteristics, 2000	24
Canadian Outbound Market to the United States	9	14. Trip Characteristics of United States Residents Entering Canada, Staying One or More Nights in Province Visited, 2000	25
Canadian Outbound Market to Countries Other than the United States	10		
International Travel Account	11	Residents of Countries Other than the United States Entering Canada	
Tables			
Receipts and Payments on Travel Account		15. Person-trips by Residents of Countries Other than the United States Entering Canada by Principal Country of Residence and Type of Transportation, 2000	26
1. Estimates of the Balance of Payments on Travel Account Between Canada and Other Countries, Quarterly, 1991-2000	12	16. Person-trips by Residents of Countries Other than the United States Entering Canada by Principal Country of Residence and Length of Stay, 1998-2000	27
2. Components of the Receipts and Payments on Travel Account, 1991-2000	13	17. Trip Characteristics of Residents of Countries Other than the United States Entering Canada for One or More Nights, 1991-2000	28
3. Receipts and Payments on Travel Account Related to Canada's Imports and Exports (Balance of Payments Basis), 1991-2000	14	18. Person-trips, Person-nights and Expenditures of Residents of Countries Other than the United States Entering Canada and Staying One or More Nights, by Selected Trip Characteristics, 2000	29
4. International Travel Accounts of Selected Countries, 1991-2000	15	19. Person-trips by Residents of Countries Other than the United States Entering Canada and Staying One or More Nights, by Selected Trip Characteristics and Purpose of Trip, 2000	30
International Travellers Entering or Returning to Canada		20. Trip Characteristics of Residents of Countries Other than the United States Entering Canada, Staying One or More Nights in Province Visited, 2000	31
5. Person-trips by International Travellers Entering or Returning to Canada, 1991-2000	16		
6. Person-trips, Expenditures and Person-nights of Non-Resident Travellers Entering Canada, 1991-2000	17		
7. Trip Characteristics of Non-Residents Entering Canada and Staying One or More Nights, 1991-2000	18		
8. Travel by Canadians Abroad Related to Selected Economic and Demographic Series, 1991-2000	19		
9. Person-trips, Expenditures and Person-nights of Canadian Residents Returning from Trips Abroad, 1991-2000	20		
10. Trip Characteristics of Canadian Residents Returning After a Stay of One or More Nights Abroad, 1991-2000	21		

Table of Contents – Concluded

	Page		Page
Tables – Continued		Tables – Concluded	
Canadian Residents Returning from the United States		Canadian Residents Returning from Countries Other than the United States – Concluded	
21. Person-trips by Canadian Residents Returning from the United States, by Type of Transportation, Quarterly, 1991-2000	32	30. Person-trips, Person-nights and Expenditures of Canadian Residents Returning from Countries Other than the United States by Selected Trip Characteristics, 2000	42
22. Trip Characteristics of Canadian Residents Returning from the United States After a Stay of One or More Nights, 1991-2000	33	31. Trip Characteristics of Canadian Residents Returning from Countries Other than the United States, by Quarter of Re-entry, 1999-2000	43
23. Person-trips, Person-nights and Expenditures of Canadian Residents Returning from the United States After a Stay of One or More Nights, by Selected Trip Characteristics, 2000	34	32. Trip Characteristics of Canadian Residents Returning from Countries Other than the United States, by Purpose of Trip, 2000	44
24. Trip Characteristics of Canadian Residents Returning from the United States After a Stay of One or More Nights, by Quarter of Re-entry, 1999-2000	35	33. Trip Characteristics of Canadian Residents Returning from Countries Other than the United States, by Province of Residence, 2000	45
25. Trip Characteristics of Canadian Residents Returning from the United States After a Stay of One or More Nights, by Type of Transportation, 1999-2000	36	34. Visits, Expenditures and Length of Stay of Canadian Residents in Selected Countries, 2000	46
26. Trip Characteristics of Canadian Residents Returning from the United States After a Stay of One or More Nights, by Purpose of Trip, 2000	37	Footnotes	47
27. Trip Characteristics of Canadian Residents Returning from the United States, by Province of Residence, 2000	38	Appendix	49
28. Visits, Expenditures and Length of Stay of Canadian Residents Returning from the United States, by Selected States, 2000	40	International Travel Statistics Background	49
		Travel and the Balance of Payments	49
		Description of Methods	50
		Estimation Method and Reliability Indicators	52
		Estimated Coefficients of Variation, 2000	54
		Definition of Terms	60
Canadian Residents Returning from Countries Other than the United States			
29. Trip Characteristics of Canadian Residents Returning from Countries Other than the United States, 1991-2000	41		

Highlights

International Travel, 2000

- Americans took a record 15.2 million one or more night trips to Canada in 2000, up marginally (0.3%) from a year earlier. Sameday trips dipped 2% to 28.8 million over the same period, the first decrease in sameday travel since 1992.
- Residents from countries other than the United States took a record 4.4 million one or more night trips to Canada in 2000, up 5% compared to 1999. This surpassed the previous high reached in 1996 when Asian and some European travel markets posted their highest trip levels.
- Canadian overnight trips south of the border grew 3.4% to 14.6 million in 2000, the second consecutive year of growth. Canadian sameday trips to the U.S. decreased 0.2% compared to 1999 levels.
- Canadians made a record 4.5 million trips to overseas countries in 2000, up 6% from 1999, following a 1% increase the previous year.
- For the third year in a row the number of American overnight trips into Canada surpassed the number of trips by Canadians travelling south of the border. Throughout most of the 1990s the reverse situation was true.
- Residents of the United Kingdom, Canada's largest overseas market, took 866,000 trips in 2000; the largest volume of overnight trips ever recorded from this country to Canada.
- Canada's international travel deficit rose for the first time in three years as Canadian travellers spent a record amount outside the country in 2000.

Introduction

Overview of 2000

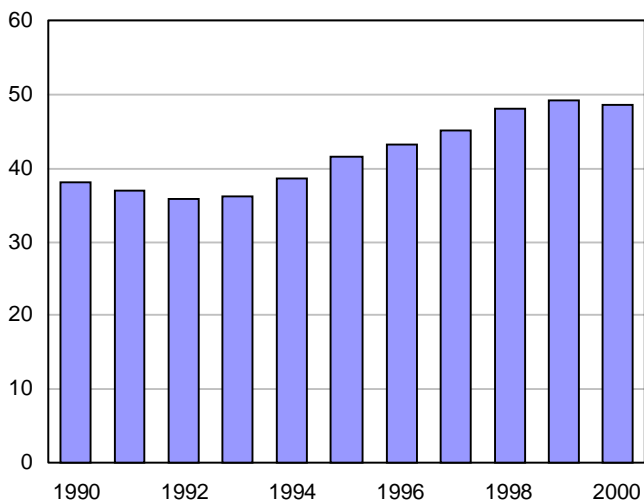
Foreign travel to Canada declines

Canada welcomed 48.6 million foreign travellers in 2000, a 1% decrease over a year earlier and the first overall drop since 1992 (*Chart 1*). Residents of the United States took 44.0 million sameday and overnight trips to Canada, a 1% decrease from a year ago. Travel by residents of other countries expanded 5% to 4.6 million trips in 2000, the second consecutive year of growth.

Chart 1

International Trips to Canada, 1990 to 2000

Millions



Americans took a record 15.2 million one or more night trips to Canada in 2000, up marginally (0.3%) from a year earlier. Sameday trips dipped 2% to 28.8 million over the same period, the first decrease in sameday travel since 1992.

About 4.4 million overseas travellers spent at least one night in Canada in 2000, up 5% from the previous year following a 6% increase in 1999. Last year's gain was driven largely by recovering Asian markets as the number of travellers from Asian countries rose 6%. Travel from European countries increased 4%, due mainly to record travel by British tourists (11%). Sameday travel by overseas residents increased 5% to 251,000 trips, the first increase in three years.

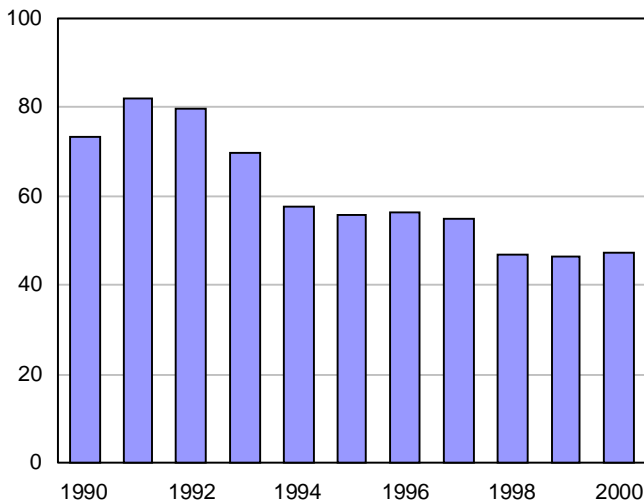
Canadian outbound travel picks up

Canadians made a record 47.2 million sameday and overnight trips outside Canada in 2000 or 2% more than in 1999 (*Chart 2*). The vast majority of their trips or 42.7 million were to American destinations, up 1% over 1999 and the first overall gain in travel to the United States since 1996 (*Chart 3*). Their travels to countries other than the U.S. increased 6% to a record 4.5 million in 2000. Apart from a decline in Canadian overseas trips in 1991, travel to overseas nations has increased throughout the 1990 to 2000 period.

Chart 2

Canadian International Trips, 1990 to 2000

Millions

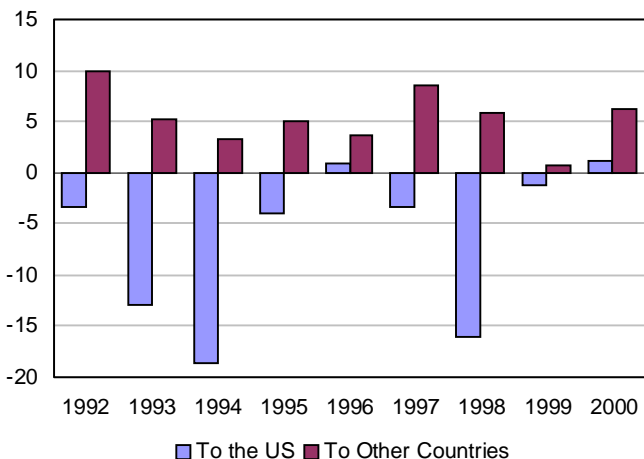


Canadian overnight trips south of the border grew 3% to 14.6 million in 2000, the second consecutive year of growth. Overnight travel to the United States has generally been on a downward trend throughout most of the decade, with trips falling from a record high of 19.1 million in 1991 to 13.4 million by 1998. Canadian sameday trips to the U.S. decreased 0.2% compared to 1999 levels. Cross-border travel from Canada has been on the decline throughout most of the 1990s as Canadians reacted to declines in the value of the Canadian dollar against its American counterpart.

Chart 3

Canadian International Trips, Annual Percentage Change, 1992 to 2000

Percentage



United States Market

United States travel to Canada continues to surpass reverse flow of Canadians

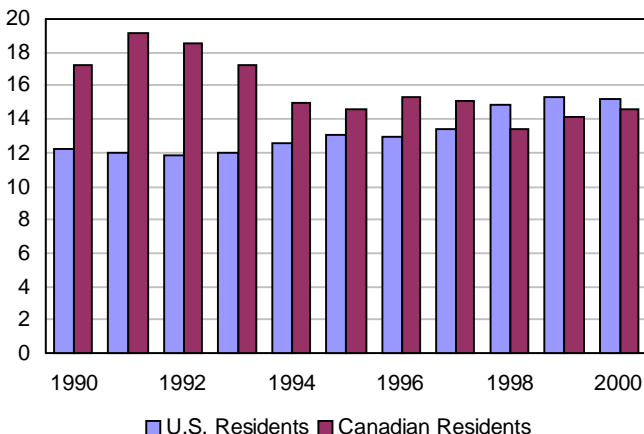
For the third year in a row the number of American overnight trips into Canada surpassed the number of trips by Canadians travelling south of the border (Chart 4). Throughout most of the 1990s the reverse situation was true. Americans also spent more nights in Canada in 2000, the highest level recorded over the 1990 to 2000 period.

Americans spent \$7.4 billion on their overnight trips to Canada in 2000, 4.2% more than they did a year earlier. American travellers now spend close to \$500 per overnight

Chart 4

Overnight Trips by Canadians to the United States Versus Americans Overnight Trips to Canada, 1990 to 2000

Millions



trip, compared to \$400 just four years ago. This is related to the continued growth in air travellers to Canada, who spend more per trip than the traditional auto travel segment: \$912 versus \$351.

Provinces set records despite slowdown in American travel

Despite the slower growth in American travel to Canada in 2000, many provinces still posted record high levels of overnight visitation from south of the border. American visits to the Atlantic Provinces, Quebec and British Columbia set new marks. American visits to New Brunswick grew 10% to 451,000, the highest growth rate in the country, followed by Saskatchewan with a 9% increase. Alberta, Quebec and British Columbia also saw more American visitors in 2000. Visits to Ontario, the most popular destination for American tourists to Canada, dropped 3%, the second straight annual decline.

Massachusetts posts largest gain in U.S. visitors to Canada

The largest number of American tourists, 1.9 million or about 12% of the total came from New York State (Table 1). The biggest annual gain among the top 10 states of origin occurred in Massachusetts whose residents took 12% more overnight trips to Canada in 2000. Texans took 9% more trips to Canada, the second highest increase of the top ten states. Travel from California topped one million overnight trips for the first time. Travel from New York, Pennsylvania and Illinois declined.

Table 1
Top Ten States of Origin for U.S. Tourists to Canada, 1999 and 2000

	1999	2000	Percentage Change 1999 to 2000
	thousands		%
New York	1,912	1,880	-2
Michigan	1,789	1,818	2
Washington	1,626	1,650	2
California	974	1,019	5
Ohio	818	819	--
Massachusetts	610	681	12
Pennsylvania	674	627	-7
Minnesota	537	539	--
Illinois	579	537	-7
Texas	384	419	9

VFR travel makes up for losses in pleasure/holiday trips

The vast majority of Americans travelled to Canada for pleasure, but last year they took 2% fewer overnight trips for this purpose. Americans took a record 2.8 million trips to visit friends or relatives living in Canada, up 4%. Business travel remained relatively constant at almost 2.4 million trips.

Travel by air to Canada again grew at a faster rate than travel by automobile. In 2000, Americans took a record 3.9 million overnight trips by plane, a 3% increase from 1999 and up 63% from 1990. In contrast, travel by auto declined 2% from 1999, but it was up 13% from a decade earlier. The fastest growing air travel segment has been the non-business travel market, which now accounts for 56% of overnight air travel compared to 50% in 1995.

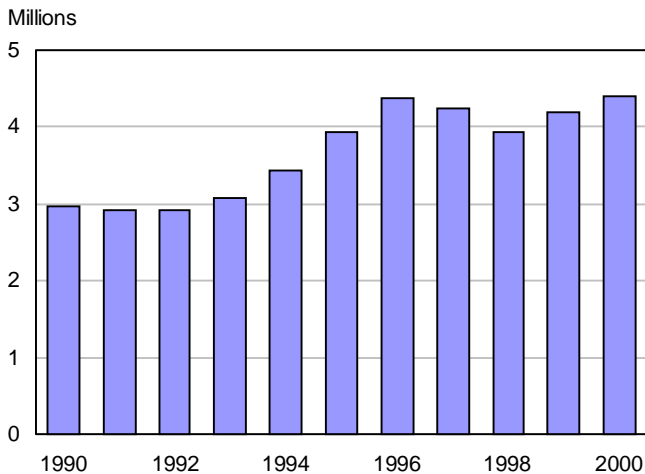
Overseas Market

Overseas travel to Canada on upward trend

Residents from countries other than the United States took a record 4.4 million one or more night trips to Canada in 2000, up 5% compared to 1999 (*Chart 5*). This surpassed the previous high reached in 1996 when Asian and some European travel markets posted their highest trip levels. European markets expanded about 4% to record 2.3 million trips in 2000, the second year of growth (*Chart 6*).

Chart 5

Overnight Trips to Canada by Residents of Countries Other Than the United States, 1990 to 2000



The United Kingdom market was largely responsible for the overall gain in European travel to Canada with residents taking 11% additional trips compared to a year earlier. Travel from Asian markets increased 6% in 2000 following a 10% gain in 1999. Despite these gains, Asian travel to Canada still remains well below the 1.5 million trips reported in 1996 (*Chart 7*).

Chart 6

Overnight Trips to Canada by Residents of Europe, 1990 to 2000

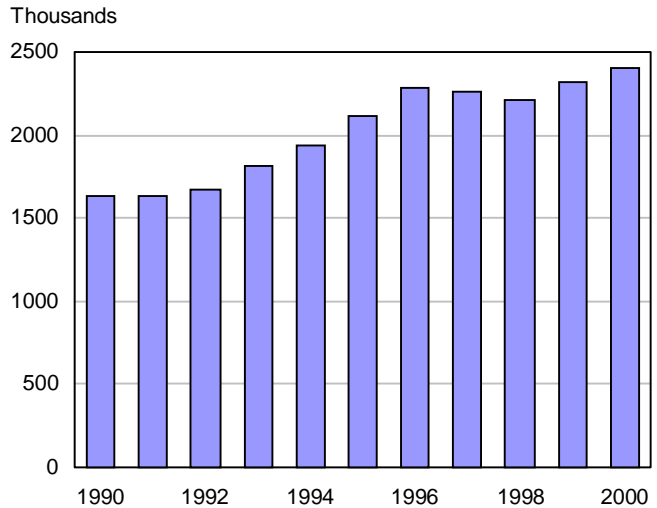
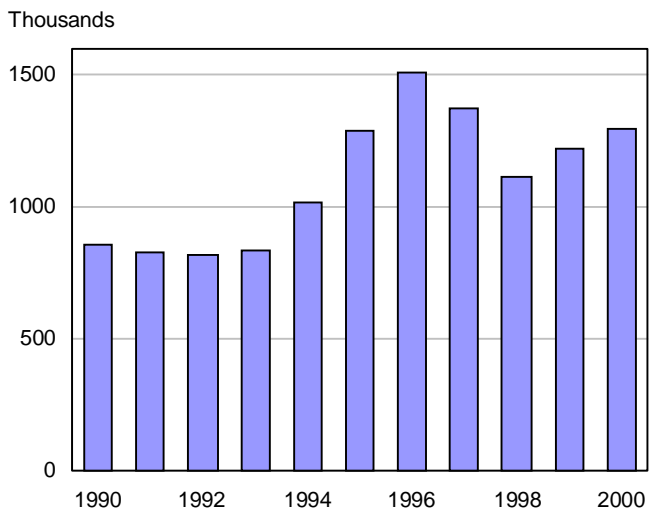


Chart 7

Overnight Trips to Canada by Residents of Asia, 1990 to 2000



Overseas spending in Canada tops \$5 billion

Residents of overseas countries spent \$5.2 billion on their overnight trips in 2000, a 6% jump over spending levels just one year earlier. Visitors now spend approximately \$1,181 per trip or approximately \$106 per night.

New record for United Kingdom trips to Canada

Residents of the United Kingdom, Canada's largest overseas market, took 866,000 trips in 2000; the largest volume of overnight trips ever recorded from this country to Canada (Table 2). Canada has enjoyed relatively solid growth from the U.K. over the 1990 to 2000 period, with an average annual growth rate of about 5%. The Japanese travel market on the other hand, decreased 3% in 2000 to 500,000 trips, still well below the high of 653,000 overnight trips recorded in 1996. France and Germany, the third and fourth largest overseas markets, dipped slightly in 2000. Visitation from both of these countries peaked in 1996.

Table 2
Canada's Top Ten Major Overseas Tourist Markets, 1999 and 2000

	1999	2000	Percentage Change 1999 to 2000
	thousands		%
United Kingdom	780	866	11
Japan	516	500	-3
France	414	404	-2
Germany	392	385	-2
Australia	152	173	14
Taiwan	155	160	3
Mexico	127	143	13
Hong Kong	134	137	2
South Korea	99	134	35
Netherlands	121	128	6

Australia pulls ahead of Taiwan to take 5th position

Australia pulled ahead of Taiwan and Hong Kong to take the 5th position among Canada's top overseas tourist markets. Travel from Taiwan rose 3% in 2000 to 160,000 overnight trips, this market's best performance over the last decade. Taiwanese travellers did not reduce their travel to Canada in 1997, as most Asian markets did at the start of the economic crisis in the region. Visitation slowed to about 5% that year but was curtailed by 11% in 1998. Over the 1990 to 2000 period, the annual average growth rate from Taiwan was 33%, the highest rate among the top ten overseas markets.

Mexico, the 7th largest overseas tourist market to Canada has provided a steady increase in tourists to Canada throughout most of the 1990s, rising from just 58,000 in 1990 to 143,000 in 2000. After reaching a peak of almost 200,000 overnight trips to Canada in 1996, Hong Kong tumbled to a low of 134,000 by the close of the decade. With visitation increasing by just 2% in 2000, Hong Kong slipped from 7th to 8th position.

South Korea makes it back to top ten

After moving off the top ten list in 1999, South Korea moved to 9th rank in 2000. Prior to the economic crisis in Asia,

South Korea was on its way to become a heady market for Canada with overnight visitation almost doubling between 1993 and 1994. Travel from South Korea continued to proceed on a rapid upward trend until 1996 when visitation peaked at 159,000 overnight trips. At this time, South Korea ranked as Canada's 6th largest overseas tourist market. Visitation dropped to a low of 65,000 trips by 1998 but bounced back in 2000 with 134,000 trips. The Netherlands followed in tenth position, supplying 128,000 tourists to Canada in 2000.

Outbound Market

Canadians to the United States

Canadian travel to U.S. posts its second consecutive year of growth

Canadians made 14.6 million overnight trips to the United States in 2000, up 3% from 1999, the second consecutive year of growth. Despite this growth, travel to the U.S. still remained below the record level of 19.1 million trips set in 1991, when the Canadian dollar was at US\$0.83. Travel plummeted to 13.4 million trips in 1998 as the Canadian dollar fell to US\$0.67.

Canadians spent almost \$9 billion while travelling in the U.S. throughout 2000, 7% above their 1999 overnight trip spending. On each trip they spent on average \$613 or \$87 on a nightly basis.

Travel to Florida recovering

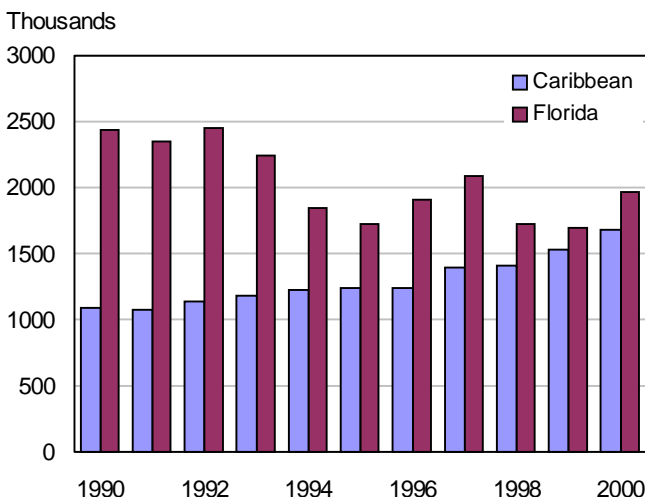
Almost two million Canadians visited Florida in 2000, up 16% over 1999 and following a 2% decrease the previous year (Table 3). As illustrated in Chart 8, the number of overnight visits to Florida peaked in 1992, then continued on a downward slide until 1996 when there were slight improvements in the performance of the Canadian dollar against its American counterpart. However, the number of visits to Florida dipped again in 1998 and 1999 as Canadians reduced their overall travel to American destinations. Over the past decade, more and more

Table 3
Top Ten States Visited By Canadians, 1999 and 2000

	1999	2000	Percentage Change 1999 to 2000
	thousands		%
New York	2,283	2,333	2
Florida	1,690	1,967	16
Washington	1,644	1,582	-4
Michigan	1,232	1,229	--
California	1,044	1,011	-3
Nevada	682	786	15
Maine	661	683	3
Pennsylvania	644	662	3
Vermont	557	610	10
Ohio	486	513	6

Chart 8

Canadian Overnight Visits to Florida, and to the Caribbean, 1990 to 2000



Canadians have been travelling to Caribbean locations, possibly as an alternative to such traditional sun destinations as Florida. Since 1990, travel to the Caribbean (including Central America and Mexico) has climbed steadily from just over one million to 1.7 million overnight visits in 2000.

Canadian visits to the gambling state of Nevada rose 15%, the second largest increase among the top 10 states visited by Canadians. Nevada has witnessed substantial growth throughout the 1990s with more and more Canadians choosing this state as their trip destination. At 2.3 million visits, New York remained the most popular state for Canadian travellers in 2000, although the rate of gain slowed to 2%. Among the top 10 states, Washington, Michigan and California received fewer Canadian travellers over the 1999 to 2000 period.

Growth in air travel continues to outpace car trips

Canadians flew to the United States on 5.4 million overnight trips in 2000, up 8% from the previous year. Due in part to the Open Skies Agreement, travel by air accounted for 37% of all overnight trips, compared with 26% in 1995. Much of the growth in air travel comes from an increasing number of non-business travellers opting to fly to their destinations. In 2000, approximately 27% of non-business overnight trips by Canadians to the U.S. were by plane compared with 18% in 1995.

Air travel to the United States has expanded from a low of 3.6 million overnight trips in 1991 to 5.4 million in 2000. On the other hand, auto travel south of the border has slid

from a high of 14.3 million overnight trips in 1991 to just under 8 million by 2000.

Canadians left on 7.8 million overnight trips south of the border for pleasure, a 5% increase over 1999. Over the last decade, pleasure travel has fluctuated between a high of 11.6 million trips in 1991 and a low of 7 million in 1998. Canadians took a record 2.7 million overnight trips south of the border for business reasons, up 2% from 1999.

Canadians to Countries Other Than the United States

Growth in Canadian travel overseas

Canadians made a record 4.5 million trips to overseas countries in 2000, up 6% from 1999, following a 1% increase the previous year. Travel to overseas countries has been on the rise throughout most of the 1990 to 2000 timeframe as Canadians continue to travel to their traditional favourites as well as discover new destinations. Their trip spending reached \$6.5 billion in 2000, 10% above 1999 levels. They spent \$1,439 per trip or approximately \$91 per night.

Spain leads growth in Canadian travellers

Double-digit gains were recorded for half of the top 10 overseas countries visited by Canadians in 2000 (Table 4). Spain led the increases with a 45% gain, followed by Japan (44%). Traffic to the Dominican Republic and Germany jumped 28% and 22% respectively. Travel to Mexico, the second most popular overseas destination for Canadians, rose 20% to record 731,000 visits. Travel to Cuba dipped 22%, after almost doubling the previous year. Travel to the United Kingdom, the most popular overseas destination for Canadians, declined 2% in 2000.

Table 4

Top Ten Overseas Countries Visited by Canadians, 1999 and 2000

	1999	2000	Percentage Change 1999 to 2000
	thousands		%
United Kingdom	816	803	-2
Mexico	608	731	20
France	408	442	8
Germany	228	277	22
Cuba	350	273	-22
Italy	192	211	10
Dominican Republic	153	195	28
Netherlands	154	154	-
Spain	91	132	45
Japan	86	124	44

International Travel Account

Travel deficit rises for first time in three years

Canada's international travel deficit rose for the first time in three years as Canadian travellers spent a record amount outside the country in 2000. Canadians spent a record \$18.0 billion in foreign countries, up 7% from 1999. At the same time, non-residents injected \$15.9 billion into the Canadian economy last year, up 5%. The resulting overall travel deficit reached just over \$2.1 billion, well above the revised level of \$1.8 billion for 1999, which was the lowest level in more than a decade. It was the first time the deficit had increased since 1997.

Travel deficit with U.S. rose with record spending by Canadians south of the border

Canada's travel deficit with the United States rose in 2000 as increased spending by Canadians south of the border outpaced spending by American travellers in Canada. Canadians spent a record \$11.3 billion in the United States in 2000, up 6% from the previous high of \$10.7 billion in 1999. At the same time, Americans spent \$9.6 billion this side of the border, a 4% increase.

As a result, the travel deficit with the United States grew from a revised \$1.5 billion in 1999 to slightly less than \$1.7 billion in 2000, the highest since 1997. The rise in the travel deficit occurred with the Canadian dollar averaging US\$0.67, practically unchanged from 1999.

Deficit with countries other than the U.S. rose despite record spending in Canada by overseas residents

Spending by overseas visitors to Canada climbed 7% in 2000 to a record high of \$6.3 billion. However, this was not enough to offset a 9% jump in overseas spending by Canadians to just under \$6.7 billion. As a result, the travel deficit between Canada and countries other than the United States increased from a revised \$296 million in 1999 to \$447 million last year. The appreciation of the Canadian dollar against many European currencies was one factor that may have contributed to the increase of Canada's travel balance with the overseas countries.

Table 1

Estimates of the Balance of Payments on Travel Account Between Canada and Other Countries, Quarterly, 1991-2000¹

Quarter	1991	1992	1993	1994	1995	1996	1997	1998	1999	2000
\$'000,000										
All countries										
Receipts										
I	1,164	1,192	1,157	1,270	1,514	1,618	1,708	1,986	2,340	2,567
II	1,967	2,067	2,112	2,366	2,718	3,059	3,154	3,581	3,742	4,017
III	3,225	3,222	3,694	4,154	4,642	5,043	5,178	5,839	6,240	6,346
IV	1,335	1,416	1,516	1,768	1,944	2,028	2,181	2,579	2,793	2,967
Total	7,691	7,897	8,480	9,558	10,818	11,748	12,221	13,985	15,115	15,898
Payments										
I	3,562	4,004	3,832	3,854	3,867	4,372	4,415	4,518	4,618	4,986
II	3,429	3,701	3,744	3,748	3,625	3,899	4,059	4,197	4,216	4,673
III	3,677	3,772	3,812	3,307	3,568	3,889	4,047	3,812	4,243	4,469
IV	3,084	2,777	2,970	2,770	3,012	3,172	3,352	3,416	3,793	3,902
Total	13,752	14,254	14,359	13,678	14,072	15,332	15,873	15,943	16,870	18,030
Balance										
I	-2,398	-2,812	-2,675	-2,584	-2,353	-2,753	-2,707	-2,532	-2,278	-2,419
II	-1,462	-1,634	-1,632	-1,382	-908	-840	-905	-616	-474	-656
III	-452	-550	-118	847	1,073	1,154	1,131	2,027	1,997	1,877
IV	-1,749	-1,361	-1,454	-1,002	-1,067	-1,144	-1,171	-837	-1,000	-934
Total	-6,061	-6,357	-5,879	-4,120	-3,254	-3,584	-3,652	-1,958	-1,755	-2,133
United States										
Receipts										
I	538	568	570	657	808	859	878	1,151	1,375	1,518
II	1,145	1,190	1,211	1,356	1,532	1,701	1,803	2,202	2,279	2,387
III	1,998	1,939	2,269	2,466	2,649	2,848	3,022	3,736	3,934	4,001
IV	686	717	828	990	1,038	1,081	1,218	1,570	1,667	1,712
Total	4,367	4,414	4,878	5,469	6,027	6,489	6,921	8,659	9,254	9,618
Payments										
I	2,626	2,990	2,719	2,611	2,565	2,957	2,938	2,904	2,845	3,215
II	2,677	2,776	2,778	2,625	2,457	2,677	2,776	2,801	2,782	3,020
III	2,731	2,628	2,583	2,051	2,194	2,425	2,452	2,157	2,717	2,704
IV	2,313	1,944	1,988	1,758	1,929	2,004	2,115	2,031	2,370	2,365
Total	10,347	10,338	10,068	9,044	9,144	10,062	10,280	9,892	10,713	11,304
Balance										
I	-2,088	-2,422	-2,148	-1,953	-1,756	-2,098	-2,060	-1,752	-1,470	-1,697
II	-1,532	-1,586	-1,568	-1,269	-925	-976	-972	-599	-503	-632
III	-733	-689	-314	415	456	424	570	1,579	1,217	1,297
IV	-1,627	-1,227	-1,159	-768	-891	-923	-897	-460	-703	-653
Total	-5,980	-5,924	-5,190	-3,576	-3,118	-3,574	-3,359	-1,233	-1,459	-1,686
Other countries										
Receipts										
I	626	624	587	612	706	759	830	834	965	1,050
II	822	877	902	1,011	1,186	1,358	1,351	1,379	1,464	1,630
III	1,227	1,283	1,425	1,688	1,992	2,194	2,156	2,103	2,306	2,345
IV	649	699	688	779	907	947	963	1,008	1,126	1,255
Total	3,324	3,483	3,601	4,089	4,791	5,259	5,300	5,325	5,861	6,280
Payments										
I	936	1,014	1,113	1,243	1,303	1,415	1,477	1,614	1,773	1,771
II	752	925	966	1,123	1,168	1,222	1,284	1,397	1,434	1,654
III	946	1,144	1,229	1,256	1,374	1,464	1,595	1,655	1,526	1,765
IV	771	833	983	1,012	1,083	1,168	1,237	1,385	1,423	1,536
Total	3,405	3,916	4,291	4,634	4,928	5,269	5,593	6,051	6,157	6,726
Balance										
I	-310	-390	-527	-631	-596	-655	-647	-780	-807	-722
II	70	-48	-64	-112	18	136	67	-17	29	-23
III	281	139	196	432	618	730	560	448	779	580
IV	-122	-134	-295	-233	-176	-221	-274	-377	-297	-281
Total	-81	-433	-690	-545	-137	-10	-293	-726	-296	-447

Table 2
Components of the Receipts and Payments on Travel Account, 1991-2000¹

Components	1991	1992	1993	1994	1995	1996	1997	1998	1999	2000
\$'000,000										
All countries										
Receipts										
Spending in Canada	6,690	6,846	7,527	8,617	9,858	10,796	11,199	12,831	13,803	14,447
Selected supplementary:										
Medical	68	68	66	70	86	87	88	90	92	92
Education	865	915	810	778	782	764	824	921	1,045	1,182
Crew spending	68	69	77	93	93	101	110	142	175	177
Total	7,691	7,897	8,480	9,558	10,818	11,749	12,221	13,985	15,115	15,898
Payments										
Spending in Country	12,955	13,563	13,617	12,885	13,131	14,327	14,803	14,770	15,567	16,647
Selected supplementary:										
Medical	360	186	132	98	184	198	226	263	287	320
Education	364	426	515	595	648	679	715	775	845	895
Crew spending	73	81	95	100	110	128	129	133	171	169
Total	13,752	14,254	14,359	13,678	14,072	15,332	15,873	15,943	16,870	18,030
United States										
Receipts										
Spending in Canada	4,186	4,229	4,694	5,258	5,801	6,258	6,669	8,357	8,903	9,248
Selected supplementary:										
Medical	55	55	53	55	64	63	65	70	71	70
Education	75	80	70	77	84	83	95	108	125	143
Crew spending	51	52	61	78	78	85	91	124	156	156
Total	4,367	4,414	4,878	5,469	6,027	6,489	6,921	8,659	9,254	9,618
Payments										
Spending in United States ²	9,645	9,738	9,436	8,363	8,340	9,203	9,373	8,902	9,615	10,131
Selected supplementary:										
Medical	336	176	122	90	171	184	210	244	266	295
Education	300	353	424	502	535	559	582	628	678	727
Crew spending	66	72	86	90	98	116	115	117	155	151
Total	10,347	10,338	10,068	9,044	9,144	10,062	10,280	9,892	10,713	11,304
Other countries										
Receipts										
Spending in Canada	2,504	2,618	2,833	3,359	4,057	4,538	4,530	4,474	4,901	5,198
Selected supplementary:										
Medical	13	13	14	15	21	23	22	20	21	21
Education	789	835	740	701	698	681	729	813	921	1,039
Crew spending	17	17	15	15	15	17	18	18	19	21
Total	3,324	3,483	3,601	4,089	4,791	5,259	5,300	5,325	5,861	6,280
Payments										
Spending in country ³	3,310	3,824	4,182	4,523	4,790	5,124	5,430	5,868	5,953	6,516
Selected supplementary:										
Medical	24	10	10	8	13	14	16	18	21	25
Education	64	73	91	93	113	120	133	148	166	167
Crew spending	7	8	9	10	12	12	14	16	16	18
Total	3,405	3,916	4,291	4,634	4,928	5,269	5,593	6,051	6,157	6,726

See footnote(s) at end of statistical tables.

Table 3

Receipts and Payments on Travel Account Related to Canada's Imports and Exports (Balance of Payments Basis), 1991-2000¹

Item	1991	1992	1993	1994	1995	1996	1997	1998	1999	2000
	\$'000,000									
Receipts										
Travel receipts	7,691	7,897	8,480	9,558	10,818	11,749	12,221	13,985	15,115	15,898
Total current account receipts	188,719	205,455	235,576	285,601	330,978	351,038	385,415	412,624	456,100	526,229
Percent	4.1	3.8	3.6	3.3	3.3	3.3	3.2	3.4	3.3	3.0
Total services receipts	23,324	25,122	28,230	32,750	35,796	39,886	43,755	49,350	51,723	55,291
Percent	33.0	31.4	30.0	29.2	30.2	29.5	27.9	28.3	29.2	28.8
Total goods receipts	147,669	163,464	190,213	228,167	265,334	280,079	303,378	326,181	365,233	422,559
Percent	5.2	4.8	4.5	4.2	4.1	4.2	4.0	4.3	4.1	3.8
Exports by commodity groupings:										
Agricultural and fishing products	13,119	15,339	16,152	18,814	20,966	23,168	24,774	25,036	25,435	27,367
Energy products	14,109	15,452	17,751	19,200	20,393	26,053	27,178	23,812	29,821	52,928
Forestry products	18,598	20,017	23,380	29,128	36,745	34,529	35,105	35,375	39,352	41,756
Industrial goods	31,252	32,380	35,219	42,498	50,899	52,333	56,634	58,623	58,700	65,917
Machinery and equipment	29,294	31,893	36,848	45,700	56,032	61,936	68,934	80,196	87,382	106,886
Automotive products	32,495	38,101	48,609	57,608	62,917	63,370	69,470	78,451	97,026	97,941
Consumer goods	3,474	4,469	5,608	7,102	8,316	9,501	10,727	12,524	13,599	14,805
Other	5,329	5,812	6,647	8,117	9,065	9,191	10,513	12,067	13,823	15,010
Total	147,669	163,464	190,213	228,167	265,334	280,079	303,378	326,181	365,233	422,559
Payments										
Travel payments	13,752	14,254	14,359	13,678	14,072	15,332	15,873	15,943	16,870	18,030
Total current account payments	214,348	230,815	263,670	303,331	337,078	346,438	396,812	424,901	454,410	499,334
Percent	6.4	6.2	5.4	4.5	4.2	4.4	4.0	3.8	3.7	3.6
Total service payments	34,743	37,245	41,840	44,413	45,933	48,961	52,619	55,956	58,176	62,005
Percent	39.6	38.3	34.3	30.8	30.6	31.3	30.2	28.5	29.0	29.1
Total goods receipts	140,658	154,430	177,123	207,873	229,937	237,689	277,727	303,378	326,844	363,281
Percent	9.8	9.2	8.1	6.6	6.1	6.5	5.7	5.3	5.2	5.0
Imports by commodity groupings:										
Agricultural and fishing products	9,004	9,736	11,014	12,577	13,375	14,138	15,651	17,257	17,661	18,568
Energy products	6,629	6,478	6,969	6,960	7,237	9,605	10,628	8,634	10,708	17,864
Forestry products	1,218	1,387	1,566	1,810	2,038	1,914	2,386	2,501	2,741	3,064
Industrial goods	24,688	27,278	32,162	39,187	45,569	46,484	54,563	60,291	62,169	70,470
Machinery and equipment	42,885	46,674	53,096	65,717	75,700	76,384	91,339	101,098	108,164	122,675
Automotive products	30,961	33,680	39,944	47,835	50,086	51,107	60,826	66,789	75,930	77,403
Consumer goods	16,615	18,943	21,368	23,441	25,546	25,840	29,766	34,583	36,975	40,089
Other	8,658	10,253	11,005	10,346	10,385	12,217	12,569	12,225	12,496	13,149
Total	140,658	154,430	177,123	207,873	229,937	237,689	277,727	303,378	326,844	363,281

Source: Quarterly estimates of the Canadian Balance of International Payments Catalogue No. 67-001 and Summary of International Trade, Catalogue No. 65-001.

Table 4
International Travel Accounts of Selected Countries, 1991-2000¹

Countries	1991	1992	1993	1994	1995	1996	1997	1998	1999	2000
	US\$'000,000									
Receipts										
Australia	4,484	4,550	5,211	6,559	7,857	9,113	9,002	5,694	7,525	8,442
Austria	13,854	13,822	12,763	12,202	13,435	12,830	11,073	11,560	11,088	11,440
Belgium ²	3,612	4,101	4,054	5,182	5,858	5,951	5,275	5,375	7,039	..
Canada	6,712	6,536	6,575	6,998	7,874	8,623	8,763	9,133	10,025	10,704
Denmark	3,475	3,784	3,052	3,174	3,672	3,425	3,185	3,036	3,682	4,025
Finland	1,197	1,313	1,240	1,402	2,022	1,914	1,963	1,972	1,460	1,401
France	21,363	25,051	23,564	24,678	27,527	28,357	28,009	29,700	31,699	29,900
Germany	15,078	15,913	14,876	14,816	17,908	17,546	16,509	15,859	16,828	17,812
Greece	2,567	3,272	3,335	3,905	4,136	3,723	3,771	4,050	8,765	9,221
Italy	18,421	21,450	22,751	24,739	28,729	30,017	29,714	30,427	28,357	27,439
Japan	3,435	3,588	3,557	3,477	3,226	4,078	4,326	4,154	3,428	3,374
Netherlands	4,825	5,968	5,391	5,434	6,565	6,551	6,328	6,806	7,092	6,951
Norway	1,646	1,975	1,939	2,229	2,362	2,356	2,216	2,212	2,229	..
Spain	19,126	22,180	19,741	21,474	25,388	26,690	26,651	29,585	32,913	31,000
Sweden	2,713	3,087	2,652	2,823	3,471	3,655	3,614	4,107	3,894	..
Switzerland	7,684	8,099	7,601	8,298	9,365	8,826	7,902	8,208	7,355	7,303
United Kingdom	13,026	13,844	14,245	14,986	18,554	19,173	20,039	21,233	20,972	19,518
United States	48,385	54,742	57,875	58,417	63,395	69,751	73,268	71,116	74,448	85,153
Payments										
Australia	4,247	4,301	3,451	3,969	4,587	5,445	6,150	5,388	5,792	6,024
Austria	7,362	7,948	7,762	8,854	10,887	11,015	10,124	10,380	9,195	9,255
Belgium ²	5,543	6,714	6,338	7,773	9,003	9,330	8,275	8,842	10,057	..
Canada	12,002	11,796	11,133	10,014	10,177	11,090	11,268	10,755	11,302	12,140
Denmark	3,377	3,779	3,214	3,583	4,280	4,142	4,137	4,462	5,084	5,139
Finland	2,677	2,386	1,617	1,608	2,272	2,287	2,082	2,063	1,944	1,816
France	12,321	13,914	12,836	13,773	16,328	17,746	16,576	17,800	17,732	17,166
Germany	35,819	41,174	40,878	45,198	52,140	50,984	46,200	46,939	48,158	47,607
Greece	1,015	1,186	1,003	1,125	1,323	1,210	1,325	1,756	2,000	4,556
Italy	11,648	19,592	15,885	13,942	14,829	15,805	16,631	16,896	16,913	15,453
Japan	23,983	26,837	26,860	30,715	36,792	37,040	33,041	28,815	32,780	31,480
Netherlands	8,149	9,634	8,920	9,371	11,661	11,528	10,319	10,975	11,366	11,823
Norway	3,413	3,870	3,336	3,723	4,232	4,491	4,496	4,564	4,751	..
Spain	4,544	5,542	4,735	4,129	4,461	4,919	4,467	4,999	5,624	5,500
Sweden	6,286	7,059	4,483	4,874	5,448	6,462	6,746	7,842	7,557	..
Switzerland	5,735	6,099	5,954	6,370	7,346	7,570	6,904	7,126	6,963	6,307
United Kingdom	17,550	19,725	19,477	21,998	24,268	25,309	27,710	32,267	35,631	36,560
United States	35,322	38,552	40,713	43,782	44,916	48,048	51,220	53,728	61,000	65,044
Balance										
Australia	237	249	1,760	2,590	3,270	3,668	2,852	306	1,733	2,418
Austria	6,492	5,874	5,001	3,348	2,548	1,815	949	1,180	1,893	2,185
Belgium ²	-1,931	-2,613	-2,284	-2,591	-3,145	-3,379	-3,013	-3,467	-3,018	..
Canada	-5,290	-5,260	-4,558	-3,016	-2,303	-2,467	-2,505	-1,622	-1,277	-1,436
Denmark	98	5	-162	-409	-608	-717	-952	-1,426	-1,402	-1,114
Finland	-1,480	-1,073	-377	-206	-250	-373	-119	-91	-484	-415
France	9,042	11,137	10,728	10,905	11,199	10,611	11,433	11,900	13,967	12,734
Germany	-20,741	-25,261	-26,002	-30,382	-34,232	-33,438	-29,691	-31,080	-31,330	-29,795
Greece	1,552	2,086	2,332	2,780	2,813	2,513	2,446	2,294	6,765	4,665
Italy	6,773	1,858	6,866	10,797	13,900	14,212	13,083	13,531	11,444	11,986
Japan	-20,548	-23,249	-23,303	-27,238	-33,566	-32,962	-28,715	-24,661	-29,352	-28,106
Netherlands	-3,324	-3,666	-3,529	-3,937	-5,096	-4,977	-3,991	-4,169	-4,274	-4,872
Norway	-1,767	-1,895	-1,397	-1,494	-1,870	-2,135	-2,179	-2,352	-2,522	..
Spain	14,582	16,638	15,006	17,345	20,927	21,771	22,184	24,586	27,289	25,500
Sweden	-3,573	-3,972	-1,831	-2,051	-1,977	-2,807	-3,132	-3,735	-3,663	..
Switzerland	1,949	2,000	1,647	1,928	2,019	1,256	998	1,082	392	996
United Kingdom	-4,524	-5,881	-5,232	-7,012	-5,714	-6,136	-7,671	-11,034	-14,659	-17,042
United States	13,063	16,190	17,162	14,635	18,479	21,703	22,048	17,388	13,448	20,109

See footnote(s) at end of statistical tables

Source: All data (except Canada) from publication *Tourism Policy and International Tourism in OECD Member Countries*. Since 1997, from World Tourism Organization (WTO).

Table 5
Person-trips by International Travellers Entering or Returning to Canada, 1991-2000

Traveller category	1991	1992	1993	1994	1995	1996	1997	1998	1999	2000
	'000									
Non-resident travellers										
Same day:										
United States	21,575	20,609	20,599	22,316	24,325	25,563	27,089	28,965	29,450	28,769
Other countries	331	381	397	363	400	409	352	271	239	251
Total	21,906	20,990	20,995	22,679	24,725	25,971	27,441	29,236	29,689	29,020
One or more nights:										
United States	12,002	11,819	12,024	12,543	13,005	12,909	13,401	14,893	15,180	15,225
Other countries	2,910	2,922	3,081	3,429	3,927	4,377	4,234	3,935	4,187	4,393
Total	14,912	14,741	15,105	15,972	16,932	17,286	17,636	18,828	19,367	19,617
Non-residents – Total:										
United States	33,577	32,427	32,623	34,859	37,330	38,471	40,490	43,857	44,630	43,994
Other countries	3,241	3,303	3,478	3,792	4,327	4,785	4,586	4,207	4,425	4,644
Total	36,818	35,730	36,100	38,651	41,657	43,256	45,076	48,064	49,055	48,638
Residents of Canada										
Same day:										
United States	60,237	58,129	49,448	39,343	37,491	37,398	35,815	29,337	28,081	28,019
Other countries	-	-	-	-	-	-	-	-	-	-
Total	60,237	58,129	49,448	39,343	37,491	37,398	35,815	29,337	28,081	28,019
One or more nights:										
United States	19,113	18,598	17,293	14,970	14,663	15,301	15,127	13,430	14,116	14,648
Other countries	2,824	3,103	3,268	3,374	3,543	3,672	3,984	4,218	4,252	4,516
Total	21,937	21,701	20,561	18,344	18,206	18,973	19,111	17,648	18,368	19,163
Residents – Total:										
United States	79,351	76,728	66,741	54,313	52,153	52,699	50,942	42,768	42,196	42,666
Other countries	2,824	3,103	3,268	3,374	3,543	3,672	3,984	4,218	4,252	4,516
Total	82,174	79,830	70,009	57,687	55,697	56,371	54,925	46,985	46,448	47,182
Other travellers										
Non-resident crews	2,529	2,686	2,806	2,918	2,952	3,061	3,146	3,168	3,324	3,356
Resident crews	2,724	2,929	3,276	3,679	4,050	4,363	4,661	5,029	5,475	5,720
Other ¹	270	301	332	323	323	339	330	318	309	350
Total	5,523	5,916	6,414	6,919	7,325	7,763	8,137	8,515	9,109	9,426
Grand – Total	124,515	121,477	112,523	103,257	104,679	107,390	108,139	103,564	104,612	105,246

See footnote(s) at end of statistical tables.

Table 6

Person-trips, Expenditures and Person-nights of Non-Resident Travellers Entering Canada, 1991-2000

Item		1991	1992	1993	1994	1995	1996	1997	1998	1999	2000
All countries											
Same day:											
Person-trips	'000	21,906	20,990	20,995	22,679	24,725	25,971	27,441	29,236	29,689	29,020
Spending in Canada	\$'000,000	558	557	587	875	1,021	1,125	1,328	1,666	1,763	1,810
Average spending per person-trip	\$	25.50	26.50	28.00	38.60	41.30	43.30	48.40	57.00	59.40	62.40
One or more nights:											
Person-trips	'000	14,912	14,741	15,105	15,972	16,932	17,286	17,636	18,828	19,367	19,617
Spending in Canada	\$'000,000	6,132	6,289	6,940	7,742	8,837	9,670	9,871	11,166	12,040	12,636
Average spending per person-trip	\$	411.20	426.70	459.40	484.70	521.90	559.50	559.70	593.00	621.70	644.10
Number of person-nights	'000	82,773	79,423	82,080	85,387	91,983	96,685	96,648	98,283	105,720	107,816
Average number of nights		5.6	5.4	5.4	5.3	5.4	5.6	5.5	5.2	5.5	5.5
Average spending per person-night	\$	74.10	79.20	84.50	90.70	96.10	100.00	102.10	113.60	113.90	117.20
Total											
Person-trips	'000	36,818	35,731	36,100	38,651	41,657	43,256	45,076	48,064	49,055	48,638
Spending in Canada	\$'000,000	6,690	6,846	7,527	8,617	9,858	10,796	11,199	12,831	13,803	14,447
United States											
Same day:											
Person-trips	'000	21,575	20,609	20,599	22,316	24,325	25,563	27,089	28,965	29,450	28,769
Spending in Canada	\$'000,000	544	540	571	863	1,002	1,108	1,314	1,654	1,754	1,800
Average spending per person-trip	\$	25.20	26.20	27.70	38.70	41.20	43.30	48.50	57.10	59.60	62.60
One or more nights:											
Person-trips	'000	12,003	11,819	12,024	12,542	13,005	12,909	13,401	14,893	15,180	15,225
Spending in Canada	\$'000,000	3,642	3,689	4,123	4,396	4,799	5,150	5,355	6,703	7,149	7,448
Average spending per person-trip	\$	303.40	312.10	342.90	350.50	369.00	399.00	399.60	450.10	470.90	489.20
Number of person-nights	'000	49,365	46,289	47,491	48,086	49,078	49,796	50,383	55,453	58,471	58,649
Average number of nights		4.1	3.9	3.9	3.8	3.8	3.9	3.8	3.7	3.9	3.9
Average spending per person-night	\$	73.80	79.70	86.80	91.40	97.80	103.40	106.30	120.90	122.30	127.00
Total											
Person-trips	'000	33,577	32,428	32,623	34,859	37,330	38,471	40,490	43,857	44,630	43,994
Spending in Canada	\$'000,000	4,186	4,229	4,694	5,258	5,801	6,258	6,669	8,357	8,903	9,248
Other countries											
Same day:											
Person-trips	'000	331	381	397	363	400	409	352	271	239	251
Spending in Canada	\$'000,000	14	17	16	13	19	17	14	12	9	10
Average spending per person-trip	\$	42.10	44.90	39.30	34.70	46.90	42.40	40.80	43.20	37.40	40.70
One or more nights:											
Person-trips	'000	2,910	2,922	3,081	3,429	3,927	4,377	4,234	3,935	4,187	4,393
Spending in Canada	\$'000,000	2,490	2,601	2,817	3,346	4,038	4,520	4,516	4,462	4,892	5,188
Average spending per person-trip	\$	856.00	890.00	914.30	975.70	1,028.40	1,032.80	1,066.40	1,133.90	1,168.40	1,181.10
Number of person-nights	'000	33,408	33,134	34,589	37,301	42,904	46,889	46,265	42,830	47,250	49,167
Average number of nights		11.5	11.3	11.2	10.9	10.9	10.7	10.9	10.9	11.3	11.2
Average spending per person-night	\$	74.60	78.50	81.40	89.70	94.10	96.40	97.60	104.20	103.50	105.50
Total											
Person-trips	'000	3,241	3,303	3,478	3,792	4,327	4,785	4,586	4,207	4,425	4,644
Spending in Canada	\$'000,000	2,504	2,618	2,833	3,359	4,057	4,538	4,530	4,474	4,901	5,198

Table 7

Trip Characteristics of Non-Residents Entering Canada and Staying One or More Nights, 1991-2000

Trip characteristics	1991	1992	1993	1994	1995	1996	1997	1998	1999	2000
Person-trips '000	14,912	14,741	15,105	15,972	16,932	17,286	17,636	18,828	19,367	19,617
Number of persons in sample	72,700	71,400	73,500	67,200	62,000	62,600	60,600	56,600	55,300	53,200
Percentage of person-trips										
Residence:										
United States	80.5	80.2	79.6	78.5	76.8	74.7	76.0	79.1	78.4	77.6
Overseas countries	19.5	19.8	20.4	21.5	23.2	25.3	24.0	20.9	21.6	22.4
Total	100.0	100.0	100.0	100.0	100.0	100.0	100.0	100.0	100.0	100.0
Quarter of entry:										
I	12.0	12.1	11.5	11.5	11.9	12.2	12.8	12.2	13.2	13.7
II	26.6	26.6	26.2	26.4	26.5	27.2	26.1	26.1	25.7	26.6
III	45.5	44.9	45.5	45.7	45.1	44.3	44.1	43.9	43.5	42.3
IV	15.9	16.3	16.8	16.5	16.5	16.4	16.9	17.8	17.6	17.4
Total	100.0	100.0	100.0	100.0	100.0	100.0	100.0	100.0	100.0	100.0
Principal country of residence:										
Australia	0.7	0.7	0.6	0.7	0.8	0.9	0.9	0.8	0.8	0.9
Belgium ¹	0.2	0.2	0.2	0.2	0.3	0.3	0.3	0.3	0.3	0.3
France ²	2.1	2.1	2.4	2.6	2.5	2.7	2.5	2.1	2.1	2.1
Germany	1.8	2.0	2.2	2.3	2.5	2.6	2.3	2.0	2.0	2.0
Hong Kong	0.8	0.8	0.8	0.8	1.0	1.2	0.8	0.8	0.7	0.7
Israel	0.4	0.3	0.3	0.3	0.4	0.5	0.4	0.3	0.3	0.4
Italy	0.6	0.6	0.6	0.6	0.6	0.6	0.6	0.5	0.6	0.6
Japan	2.6	2.7	2.7	3.0	3.5	3.7	3.2	2.6	2.7	2.6
Mexico	0.4	0.4	0.5	0.5	0.4	0.5	0.5	0.6	0.7	0.7
Netherlands	0.6	0.6	0.6	0.6	0.6	0.7	0.7	0.6	0.6	0.7
Sweden	0.2	0.2	0.2	0.2	0.2	0.2	0.2	0.2	0.2	0.2
Switzerland	0.5	0.5	0.6	0.6	0.6	0.6	0.6	0.5	0.5	0.5
United Kingdom	3.6	3.6	3.7	3.6	3.8	4.0	4.2	4.0	4.0	4.4
United States	80.5	80.2	79.6	78.5	76.8	74.7	76.0	79.1	78.4	77.6
West Indies	0.5	0.6	0.6	0.5	0.5	0.6	0.5	0.5	0.6	0.6
Other countries	4.6	4.4	4.4	5.0	5.6	6.4	6.5	5.1	5.5	5.9
Total	100.0	100.0	100.0	100.0	100.0	100.0	100.0	100.0	100.0	100.0
Purpose of trip:										
Business, convention and employment	14.6	15.3	15.2	14.8	14.9	15.3	16.3	16.2	15.9	16.0
Visiting friends or relatives	22.0	21.6	21.7	20.5	20.0	19.6	20.3	19.7	20.0	20.8
Other pleasure, recreation or holiday	56.2	55.4	55.1	56.2	56.7	56.4	55.0	56.1	55.7	54.5
Other	7.2	7.7	8.1	8.5	8.3	8.7	8.5	8.1	8.3	8.7
Total	100.0	100.0	100.0	100.0	100.0	100.0	100.0	100.0	100.0	100.0
Sex:										
Male	47.2	46.2	45.7	46.2	46.3	47.6	47.8	46.5	46.7	46.8
Female	43.8	43.7	44.2	44.7	45.6	44.7	44.7	43.9	43.7	44.3
Not stated	9.0	10.1	10.0	9.1	8.1	7.7	7.5	9.6	9.6	8.9
Total	100.0	100.0	100.0	100.0	100.0	100.0	100.0	100.0	100.0	100.0
Age group:										
Persons under 12 years	5.8	5.9	5.6	5.5	5.7	5.3	5.4	5.5	5.5	5.5
Persons 12 years and over	85.2	84.0	84.3	85.3	86.1	87.0	87.2	85.0	84.9	85.7
Not stated	9.0	10.1	10.0	9.1	8.1	7.7	7.5	9.5	9.5	8.8
Total	100.0	100.0	100.0	100.0	100.0	100.0	100.0	100.0	100.0	100.0

See footnote(s) at end of statistical tables.

Table 8

Travel by Canadians Abroad Related to Selected Economic and Demographic Series, 1991-2000

Selected series		1991	1992	1993	1994	1995	1996	1997	1998	1999	2000
Person-trips, one or more nights	'000	21,937	21,701	20,561	18,344	18,206	18,973	19,111	17,648	18,368	19,163
Change	%	7.5	-1.1	-5.3	-10.8	-0.8	4.2	0.7	-7.7	4.1	4.3
Population of Canada	'000	28,031	28,377	28,703	29,036	29,354	29,672	30,011	30,301	30,493	30,750
Change	%	1.2	1.2	1.1	1.2	1.1	1.1	1.1	1.0	0.6	0.8
Adult population (18 years and over)	'000	21,094	21,351	21,621	21,906	22,188	22,466	22,793	23,098	23,350	23,641
Change	%	1.3	1.2	1.3	1.3	1.3	1.3	1.5	1.3	1.1	1.2
Employed labour force	'000	12,852	12,758	12,858	13,110	13,358	13,465	13,774	14,138	14,532	14,911
Change	%	-1.9	-0.7	0.8	2.0	1.9	0.8	2.3	2.6	2.8	2.6
Overnight trip spending	\$'000,000	11,196	11,793	12,049	11,684	11,974	13,086	13,679	13,847	14,426	15,558
Change	%	3.2	5.3	2.2	-3.0	2.5	9.3	4.5	1.2	4.2	7.8
Disposable income ¹	\$'000,000	473,913	485,147	497,230	503,494	521,435	529,818	548,355	569,410	597,710	613,023
Change	%	3.3	2.4	2.5	1.3	3.6	1.6	3.5	3.8	5.0	2.6
Per capita trip spending	\$	399	416	420	402	408	441	456	457	473	506
Change	%	2.0	4.0	1.0	-4.1	1.4	8.1	3.4	0.3	3.5	7.0
Per capita disposable income ¹	\$	16,907	17,096	17,323	17,340	17,763	17,856	18,271	18,791	19,602	20,521
Change	%	1.9	1.1	1.3	0.1	2.4	0.5	2.3	2.8	4.3	4.7
Exchange rate (in Canadian currency):											
Austria	(shilling)	0.0985	0.1103	0.1110	0.1200	0.1363	0.1289	0.1136	0.1201	0.1152	0.0996
Bahamas	(dollar)	1.1458	1.2083	1.2898	1.3659	1.3726	1.3636	1.3844	1.4831	1.4858	1.4852
France	(franc)	0.2039	0.2288	0.2279	0.2469	0.2754	0.2667	0.2375	0.2520	0.2416	0.2089
Germany	(mark)	0.6934	0.7757	0.7804	0.8444	0.9591	0.9068	0.7994	0.8450	0.8102	0.7007
Italy	(lira)	0.0009	0.0010	0.0008	0.0008	0.0008	0.0009	0.0008	0.0009	0.0008	0.0007
Mexico ²	(nuevo peso)	0.0004	0.0004	0.4146	0.4070	0.2163	0.1796	0.1749	0.1628	0.1556	0.1571
Netherlands	(guilder)	0.6153	0.6889	0.6947	0.7529	0.8564	0.8094	0.7103	0.7496	0.7191	0.6219
Spain	(peseta)	0.0111	0.0118	0.0102	0.0102	0.0110	0.0108	0.0095	0.0096	0.0095	0.0082
Switzerland	(franc)	0.8027	0.8627	0.8734	1.0024	1.1633	1.1051	0.9548	1.0258	0.9901	0.8793
United Kingdom	(pound)	2.0275	2.1302	1.9372	2.0928	2.1671	2.1283	2.2682	2.4587	2.4038	2.2499
United States	(dollar)	1.1458	1.2083	1.2898	1.3659	1.3726	1.3636	1.3844	1.4831	1.4858	1.4852
Average spending per person-trip	\$	510.40	543.50	586.00	636.90	657.70	689.70	715.80	784.60	785.40	811.90
Change	%	-4.0	6.5	7.8	8.7	3.3	4.9	3.8	9.6	0.1	3.4
Average number of nights		8.7	9.0	9.3	9.6	9.4	9.4	9.3	9.8	9.2	9.1
United States		7.2	7.4	7.5	7.5	7.2	7.1	7.1	7.4	7.1	7.0
Other Countries		18.5	18.5	18.8	18.5	18.3	18.9	17.8	17.1	16.4	15.8
Travel price index:	1992=100										
Canada		99.3	100.0	102.5	104.3	108.4	111.7	116.2	118.9	124.3	129.8

See footnote(s) at end of statistical tables.

Source: Canadian Economic Observer, Bank of Canada and CANSIM matrices 6367 and 6967.

Table 9

Person-trips, Expenditures and Person-nights of Canadian Residents Returning from Trips Abroad, 1991-2000

Item		1991	1992	1993	1994	1995	1996	1997	1998	1999	2000
All countries											
Same day:											
Person-trips	'000	60,237	58,129	49,448	39,343	37,491	37,398	35,815	29,337	28,081	28,019
Spending	\$'000,000	1,759	1,769	1,568	1,202	1,157	1,241	1,125	924	1,141	1,089
Average spending per person-trip	\$	29.20	30.40	31.70	30.50	30.90	33.20	31.40	31.50	40.60	38.90
One or more nights:											
Person-trips	'000	21,937	21,701	20,561	18,344	18,206	18,973	19,111	17,648	18,368	19,163
Spending	\$'000,000	11,138	11,732	11,980	11,626	11,911	13,019	13,586	13,750	14,337	15,473
Average spending per person-trip	\$	507.70	540.60	582.70	633.80	654.30	686.20	710.90	779.10	780.60	807.40
Number of person-nights	'000	189,665	194,792	190,321	175,278	170,771	178,018	178,541	172,012	169,494	174,534
Average number of nights		8.6	9.0	9.3	9.6	9.4	9.4	9.3	9.8	9.2	9.1
Average spending per person-night	\$	58.70	60.20	62.90	66.30	69.80	73.10	76.10	79.90	84.60	88.70
Total											
Person-trips	'000	82,174	79,830	70,009	57,687	55,697	56,371	54,925	46,985	46,448	47,182
Spending	\$'000,000	12,898	13,502	13,548	12,828	13,068	14,260	14,711	14,674	15,478	16,561
United States¹											
Same day:											
Person-trips	'000	60,237	58,129	49,448	39,343	37,491	37,398	35,815	29,337	28,081	28,019
Spending	\$'000,000	1,759	1,769	1,568	1,202	1,157	1,241	1,125	924	1,141	1,089
Average spending per person-trip	\$	29.20	30.40	31.70	30.50	30.90	33.20	31.40	31.50	40.60	38.90
One or more nights:											
Person-trips	'000	19,113	18,598	17,293	14,970	14,663	15,301	15,127	13,430	14,116	14,648
Spending	\$'000,000	7,846	7,927	7,816	7,122	7,142	7,915	8,175	7,902	8,401	8,975
Average spending per person-trip	\$	410.50	426.20	452.00	475.70	487.10	517.30	540.40	588.40	595.10	612.70
Number of person-nights	'000	137,318	137,322	128,837	112,718	105,795	108,673	107,653	99,858	99,909	103,024
Average number of nights		7.2	7.4	7.5	7.5	7.2	7.1	7.1	7.4	7.1	7.0
Average spending per person-night	\$	57.10	57.70	60.70	63.20	67.50	72.80	75.90	79.10	84.10	87.10
Total											
Person-trips	'000	79,351	76,728	66,741	54,313	52,153	52,699	50,942	42,768	42,196	42,666
Spending	\$'000,000	9,606	9,696	9,384	8,324	8,299	9,156	9,300	8,826	9,542	10,064
Other countries²											
Same day:											
-											
One or more nights:											
Person-trips	'000	2,824	3,103	3,268	3,374	3,543	3,672	3,984	4,218	4,252	4,516
Spending	\$'000,000	3,292	3,805	4,164	4,504	4,769	5,104	5,411	5,848	5,936	6,498
Average spending per person-trip	\$	1,165.90	1,226.40	1,274.10	1,334.90	1,346.10	1,390.00	1,358.40	1,386.50	1,396.20	1,438.90
Number of person-nights	'000	52,347	57,463	61,485	62,560	64,975	69,345	70,888	72,154	69,585	71,510
Average number of nights		18.5	18.5	18.8	18.5	18.3	18.9	17.8	17.1	16.4	15.8
Average spending per person-night	\$	62.90	66.20	67.70	72.00	73.40	73.60	76.30	81.00	85.30	90.90
Total											
Person-trips	'000	2,824	3,103	3,268	3,374	3,543	3,672	3,984	4,218	4,252	4,516
Spending	\$'000,000	3,292	3,805	4,164	4,504	4,769	5,104	5,411	5,848	5,936	6,498

See footnote(s) at end of statistical tables.

Table 10

Trip Characteristics of Canadian Residents Returning After a Stay of One or More Nights Abroad, 1991-2000

Trip characteristics		1991	1992	1993	1994	1995	1996	1997	1998	1999	2000
Person-trips	'000	21,937	21,701	20,561	18,344	18,206	18,973	19,111	17,648	18,368	19,163
Spending in country	\$'000,000	11,196	11,793	12,049	11,684	11,974	13,086	13,679	13,847	14,426	15,558
Average spending per person-trip	\$	510.40	543.50	586.00	636.90	657.70	689.70	715.80	784.60	785.40	811.90
Number of person-nights	'000	190,027	195,630	190,989	175,813	171,441	178,018	178,541	172,012	169,494	174,534
Average number of nights		8.7	9.0	9.3	9.6	9.4	9.4	9.3	9.8	9.2	9.1
Number of persons in sample		96,400	89,500	86,600	74,400	67,400	67,600	61,700	53,200	55,000	54,300
Percentage of person-trips											
Trip destination:											
United States		87.1	85.7	84.1	81.6	80.5	80.6	79.2	76.1	76.9	76.4
Overseas countries		12.9	14.3	15.9	18.4	19.5	19.4	20.8	23.9	23.1	23.6
Total		100.0	100.0	100.0	100.0	100.0	100.0	100.0	100.0	100.0	100.0
Quarter of entry:											
I		21.0	23.0	23.0	23.8	23.1	24.4	24.6	25.1	23.7	24.3
II		23.0	23.3	23.9	24.4	24.0	23.9	24.0	25.3	24.4	24.8
III		35.5	35.0	34.4	32.1	32.7	32.2	31.7	29.5	31.0	30.6
IV		20.5	18.7	18.7	19.7	20.2	19.5	19.7	20.1	21.0	20.3
Total		100.0	100.0	100.0	100.0	100.0	100.0	100.0	100.0	100.0	100.0
Province of residence:											
Atlantic Provinces		4.8	4.3	4.2	3.5	3.7	3.8	3.7	3.6	3.7	3.6
Québec		19.6	19.8	19.8	18.8	18.7	19.2	18.5	17.4	18.5	18.4
Ontario		45.4	46.5	46.7	48.1	47.7	46.5	46.3	48.0	47.5	47.9
Manitoba		4.4	4.2	4.2	3.8	3.8	4.0	3.7	3.6	3.4	3.4
Saskatchewan		2.5	2.5	2.2	2.1	2.1	2.1	2.0	1.8	1.7	1.7
Alberta		7.5	7.5	7.4	7.0	7.5	7.7	8.1	8.3	8.1	8.1
British Columbia, Yukon and Northwest Territories		15.8	15.1	15.6	16.6	16.5	16.7	17.6	17.4	17.1	16.9
Total		100.0	100.0	100.0	100.0	100.0	100.0	100.0	100.0	100.0	100.0
Purpose of trip:											
Business, convention and employment		11.0	12.1	13.0	15.2	15.6	16.0	16.0	18.7	18.3	18.3
Visiting friends or relatives		15.3	16.6	17.0	17.7	18.2	17.8	18.2	19.8	19.1	19.2
Other pleasure, recreation or holiday		60.8	60.3	60.1	57.5	56.9	57.3	57.1	53.2	53.9	54.5
Other		12.9	11.0	9.9	9.5	9.3	8.9	8.8	8.3	8.6	8.0
Total		100.0	100.0	100.0	100.0	100.0	100.0	100.0	100.0	100.0	100.0

Table 12

Trip Characteristics of United States Residents Entering Canada and Staying One or More Nights, 1991-2000

Trip characteristics	1991	1992	1993	1994	1995	1996	1997	1998	1999	2000
Person-trips '000	12,003	11,819	12,024	12,542	13,005	12,909	13,401	14,893	15,180	15,225
Number of persons in sample	51,400	46,600	48,200	41,700	38,800	39,500	42,100	35,800	40,200	40,700
Percentage of person-trips										
Type of transportation:										
Automobile	69.7	69.9	68.7	68.9	66.9	64.5	62.7	63.1	63.3	62.1
Plane	18.1	18.6	19.7	19.2	21.3	23.6	24.1	24.3	24.8	25.4
Bus	5.7	5.6	5.6	5.9	5.8	6.0	6.1	5.4	5.3	5.2
Other methods ¹	6.5	5.8	6.0	6.0	6.0	5.9	7.2	7.1	6.6	7.2
Total	100.0	100.0	100.0	100.0	100.0	100.0	100.0	100.0	100.0	100.0
Quarter of entry:										
I	12.0	12.2	11.6	11.6	12.1	12.4	12.6	12.1	13.2	13.8
II	26.6	26.6	26.1	26.3	26.7	27.1	26.0	25.8	25.6	26.4
III	45.7	44.9	45.5	45.8	44.9	44.3	44.3	44.1	43.7	42.6
IV	15.8	16.3	16.9	16.3	16.3	16.2	17.1	18.0	17.5	17.2
Total	100.0	100.0	100.0	100.0	100.0	100.0	100.0	100.0	100.0	100.0
Region of residence:										
New England	10.5	9.9	10.6	10.5	10.4	10.1	10.7	10.6	11.3	11.8
Middle Atlantic	23.0	24.3	23.9	22.5	21.7	21.2	20.4	19.8	19.5	18.8
South Atlantic	7.5	7.6	7.6	7.5	7.8	8.6	8.5	8.1	8.6	8.4
East North Central	26.7	25.4	25.8	26.8	25.7	25.6	25.1	25.1	24.8	24.3
West North Central	6.2	6.4	6.1	6.1	6.2	6.4	6.4	6.5	6.5	6.3
East South Central	1.5	1.4	1.3	1.7	1.4	1.5	1.7	1.9	1.6	1.6
West South Central	2.6	2.8	2.9	2.5	2.8	3.0	3.4	3.3	3.3	3.5
Mountain	3.1	3.6	3.8	4.3	4.4	4.2	4.8	5.1	4.9	5.3
Pacific	18.1	17.8	17.2	17.2	18.5	18.6	18.2	18.8	18.7	19.1
Other States	0.6	0.8	0.8	0.9	1.1	0.8	0.8	0.9	0.7	0.8
Total	100.0	100.0	100.0	100.0	100.0	100.0	100.0	100.0	100.0	100.0
Purpose of trip:										
Business, convention and employment	14.2	14.9	15.1	14.3	14.8	15.3	15.7	15.8	15.5	15.5
Visiting friends or relatives	19.2	19.3	19.5	18.4	17.9	17.2	17.7	17.7	17.9	18.6
Other pleasure, recreation or holiday	58.7	57.3	56.4	57.5	57.7	57.3	56.8	57.6	57.4	56.1
Other	7.9	8.5	9.0	9.8	9.7	10.3	9.8	8.9	9.2	9.8
Total	100.0	100.0	100.0	100.0	100.0	100.0	100.0	100.0	100.0	100.0
Sex:										
Male	47.4	46.2	46.0	46.3	46.4	48.0	48.3	46.7	47.2	47.4
Female	44.2	43.9	44.6	45.3	46.4	45.3	45.8	44.4	44.2	44.8
Not stated	8.4	9.9	9.4	8.4	7.1	6.6	5.9	8.8	8.6	7.9
Total	100.0	100.0	100.0	100.0	100.0	100.0	100.0	100.0	100.0	100.0
Age group:										
Persons under 12 years	6.3	6.4	6.0	6.0	6.2	5.7	5.7	5.8	5.8	5.6
Persons 12 years and over	85.3	83.8	84.6	85.7	86.7	87.7	88.4	85.4	85.6	86.5
Not stated	8.4	9.9	9.4	8.4	7.1	6.6	5.9	8.8	8.6	7.9
Total	100.0	100.0	100.0	100.0	100.0	100.0	100.0	100.0	100.0	100.0
First visit to Canada:										
Yes	9.1	7.1	7.1	7.1	8.3	7.8	8.3
No	67.1	57.7	67.2	63.7	82.0	77.4	77.4
Not stated	23.8	35.2	25.7	29.2	9.7	14.8	14.3
Total	100.0	100.0	100.0	100.0	100.0	100.0	100.0

See footnote(s) at end of statistical tables.

Table 13

Person-trips, Person-nights and Expenditures of United States Residents Entering Canada and Staying One or More Nights, by Selected Trip Characteristics, 2000

Trip characteristics	Person-trips	Person-nights	Average number of nights	Spending in Canada	Average spending per person-trip	Average spending per person-night
	'000	%	'000	nights	\$'000,000	\$
Type of transportation:						
Automobile	9,457	62.1	34,939	3.7	3,317	350.80
Non-automobile:						
Plane	3,872	25.4	17,968	4.6	3,531	912.10
Bus	798	5.2	2,292	2.9	327	409.00
Other methods ²	1,097	7.2	3,450	3.1	273	249.00
Total	5,767	37.9	23,711	4.1	4,131	716.30
Grand - Total	15,225	100.0	58,649	3.9	7,448	489.20
Region of residence:						
New England	1,801	11.8	6,062	3.4	742	412.00
Middle Atlantic	2,864	18.8	10,114	3.5	1,187	414.70
South Atlantic	1,274	8.4	6,704	5.3	902	708.30
East North Central	3,703	24.3	12,007	3.2	1,510	407.70
West North Central	960	6.3	4,182	4.4	524	545.70
East South Central	237	1.6	999	4.2	141	594.40
West South Central	540	3.5	2,468	4.6	421	779.60
Mountain	813	5.3	3,691	4.5	452	555.00
Pacific	2,909	19.1	11,868	4.1	1,501	515.80
Other States	124	0.9	556	4.5	69	558.00
Total	15,225	100.0	58,649	3.9	7,448	489.20
Purpose of trip:						
Business, convention and employment	2,362	15.5	7,382	3.1	1,782	754.30
Visiting friends or relatives	2,832	18.6	12,191	4.3	699	246.90
Other pleasure, recreation or holiday	8,534	56.1	33,666	3.9	4,265	499.70
Other	1,496	9.8	5,411	3.6	702	469.50
Total	15,225	100.0	58,649	3.9	7,448	489.20
Night group:						
1 night	3,191	21.0	3,191	1.0	570	178.50
2-6 nights	9,627	63.2	30,990	3.2	4,498	467.30
7-13 nights	2,054	13.5	17,131	8.3	1,954	951.30
14-20 nights	255	1.7	4,052	15.9	273	1,072.90
21 nights and over	98	0.6	3,285	33.4	153	1,555.50
Total	15,225	100.0	58,649	3.9	7,448	489.20
Quarter of entry:						
I	2,098	13.8	6,620	3.2	952	453.90
II	4,019	26.4	15,231	3.8	1,905	473.90
III	6,483	42.6	27,985	4.3	3,354	517.30
IV	2,625	17.2	8,814	3.4	1,238	471.60
Total	15,225	100.0	58,649	3.9	7,448	489.20

See footnote(s) at end of statistical tables.

Table 14

Trip Characteristics of United States Residents Entering Canada, Staying One or More Nights in Province Visited, 2000

Trip characteristics		Atlantic Provinces	Québec	Ontario	Manitoba	Saskatchewan	Alberta	British Columbia ¹	Canada
Number of province-visits	'000	1,154	2,256	7,593	330	218	1,073	4,002	16,627
Spending in province	\$'000,000	480	1,147	2,904	172	113	724	1,908	7,448
Average spending per province-visit	\$	416.00	508.50	382.50	521.30	517.30	674.80	476.60	448.00
Number of visit-nights	'000	4,368	7,866	25,167	1,227	853	4,739	14,430	58,649
Average number of nights		3.8	3.5	3.3	3.7	3.9	4.4	3.6	3.5
Average spending per visit-night	\$	109.90	145.90	115.40	140.20	132.10	152.80	132.20	127.00
'000									
Region of residence:									
New England		513	922	378	9	6	30	78	1,936
Middle Atlantic		160	564	2,038	11	9	83	169	3,034
South Atlantic		159	226	660	17	18	103	279	1,462
East North Central		119	217	3,153	48	40	123	239	3,940
West North Central		43	69	489	185	57	72	172	1,085
East South Central		28	32	128	8	7	20	45	269
West South Central		41	72	214	10	13	84	184	618
Mountain		41	39	165	17	33	265	376	936
Pacific		49	112	358	23	30	274	2,313	3,158
Other States		2	2	9	2	6	20	149	189
Total		1,154	2,256	7,593	330	218	1,073	4,002	16,627
Purpose of trip:									
Business, convention and employment		69	430	1,314	35	29	186	393	2,456
Visiting friends or relatives		311	427	1,287	62	48	183	679	2,997
Other pleasure, recreation or holiday		719	1,239	4,235	163	105	581	2,516	9,558
Other		55	161	758	69	36	123	414	1,615
Total		1,154	2,256	7,593	330	218	1,073	4,002	16,627
Quarter of entry:									
I		43	382	959	42	12	117	600	2,155
II		254	565	2,081	95	56	267	1,059	4,377
III		749	853	3,214	137	111	552	1,737	7,352
IV		109	456	1,339	56	38	138	606	2,743
Total		1,154	2,256	7,593	330	218	1,073	4,002	16,627
Type of transportation:									
Automobile		626	1,301	5,165	226	133	509	2,375	10,335
Non-automobile:									
Plane		203	663	1,686	92	68	485	965	4,162
Bus		85	213	419	11	4	34	136	901
Other methods ²		240	80	324	1	11	46	526	1,229
Total		1,154	2,256	7,593	330	218	1,073	4,002	16,627

See footnote(s) at end of statistical tables.

Table 15

Person-trips by Residents of Countries Other than the United States Entering Canada by Principal Country of Residence and Type of Transportation, 2000

Country of residence	Direct air and sea	Via the United States				Air and sea	Total, via United States	Grand total
		Land, same day	Land, one or more nights	Total land	Total, via United States			
Europe								
Austria	21,000	1,200	4,800	6,000	4,500	10,400	31,400	
Belgium ¹	37,000	2,300	5,100	7,400	12,300	19,700	56,700	
Denmark	18,600	1,900	4,500	6,400	4,500	10,900	29,500	
Finland	10,800	400	2,100	2,500	2,800	5,300	16,100	
France ²	320,100	12,800	36,100	49,000	49,400	98,400	418,500	
Germany	261,200	29,600	81,000	110,600	45,100	155,700	416,900	
Greece	10,100	1,200	1,700	3,000	1,800	4,800	14,900	
Ireland (Republic)	20,900	800	4,500	5,300	5,800	11,100	32,000	
Italy	69,100	17,000	22,900	39,800	16,700	56,500	125,600	
Netherlands	95,700	4,000	17,500	21,500	15,300	36,800	132,500	
Norway	13,800	1,100	2,600	3,700	4,100	7,800	21,600	
Poland	19,600	500	1,300	1,800	1,400	3,200	22,800	
Portugal	15,700	500	1,500	2,100	2,900	5,000	20,700	
Spain	24,700	4,700	7,200	11,900	7,400	19,300	44,000	
Sweden	24,900	1,300	4,000	5,300	7,700	13,000	38,000	
Switzerland	72,000	3,500	16,400	19,900	15,300	35,200	107,200	
United Kingdom	650,000	34,500	92,300	126,800	137,000	263,800	913,800	
Yugoslavia	12,100	200	800	1,000	1,300	2,300	14,300	
Other	66,200	1,300	5,900	7,300	10,200	17,500	83,600	
Total	1,763,600	118,800	312,300	431,100	345,600	776,600	2,540,200	
Africa								
South Africa	13,100	300	1,600	1,900	8,900	10,800	23,800	
Other	32,500	400	4,200	4,600	3,200	17,700	50,200	
Total	45,500	700	5,700	6,400	22,100	28,500	74,000	
Asia								
Hong Kong	89,900	3,500	11,700	15,200	40,000	55,200	145,100	
Israel	38,900	5,800	12,700	18,500	24,200	42,700	81,600	
Japan	281,900	32,300	57,200	89,500	168,700	258,200	540,100	
Taiwan	130,900	2,500	14,300	16,800	18,500	35,400	166,200	
Other	256,400	27,800	70,900	98,700	97,800	196,500	452,800	
Total	798,000	71,900	166,800	238,700	349,300	587,900	1,385,900	
Central America	4,000	400	1,200	1,600	9,700	11,300	15,300	
Bermuda and Caribbean								
Bermuda	16,700	--	100	100	3,900	4,000	20,700	
West Indies	69,000	600	5,100	5,800	26,800	32,500	101,500	
Total	85,700	700	5,200	5,900	30,600	36,500	122,200	
South America	43,600	2,300	12,800	15,100	66,400	81,600	125,100	
North America								
Mexico	61,200	4,000	15,800	19,800	65,900	85,700	146,900	
Other	13,300	-	--	--	300	300	13,600	
Total	74,500	4,000	15,800	19,800	66,300	86,100	160,600	
Oceania and Other Ocean Islands								
Australia	52,300	5,000	31,900	36,800	90,300	127,200	179,500	
New Zealand	8,500	1,400	6,900	8,300	20,800	29,100	37,500	
Other	1,400	--	100	100	1,800	2,000	3,300	
Total	62,200	6,400	38,800	45,300	112,900	158,200	220,400	
Grand - Total	2,876,900	205,200	558,600	763,800	1,002,900	1,766,700	4,643,700	

See footnote(s) at end of statistical tables.

Table 16

Person-trips by Residents of Countries Other than the United States Entering Canada by Principal Country of Residence and Length of Stay, 1998-2000

Country of residence	1998			1999			2000		
	Same day	One or more nights	Total	Same day	One or more nights	Total	Same day	One or more nights	Total
Europe									
Austria	1,900	29,600	31,600	900	32,900	33,800	1,200	30,300	31,400
Belgium ¹	1,700	48,800	50,500	1,900	53,500	55,400	2,300	54,400	56,700
Denmark	1,600	22,000	23,600	1,400	25,300	26,700	1,900	27,600	29,500
Finland	800	14,300	15,100	1,500	14,100	15,600	400	15,700	16,100
France ²	15,300	402,000	417,300	15,500	413,900	429,300	14,700	403,800	418,500
Germany	36,000	378,600	414,600	33,200	392,500	425,600	31,800	385,100	416,900
Greece	800	13,600	14,400	700	14,300	15,000	1,200	13,700	14,900
Ireland (Republic)	1,400	30,100	31,500	1,300	29,900	31,200	800	31,200	32,000
Italy	20,500	101,500	122,000	18,000	111,200	129,200	17,200	108,500	125,600
Netherlands	6,400	110,200	116,700	3,600	120,800	124,300	4,400	128,100	132,500
Norway	2,000	17,000	18,900	900	19,400	20,200	1,100	20,500	21,600
Poland	600	21,700	22,300	500	21,100	21,600	500	22,300	22,800
Portugal	700	20,000	20,700	500	22,000	22,500	500	20,100	20,700
Spain	5,200	35,400	40,600	5,700	41,200	46,900	4,700	39,300	44,000
Sweden	2,600	33,200	35,800	1,800	34,700	36,500	2,700	35,300	38,000
Switzerland	5,500	102,000	107,500	3,100	100,900	104,000	3,500	103,700	107,200
United Kingdom	41,400	747,300	788,700	43,800	780,300	824,100	48,100	865,700	913,800
Yugoslavia	300	12,500	12,800	300	13,100	13,400	200	14,100	14,300
Other	2,600	71,600	74,200	2,000	78,500	80,500	1,800	81,900	83,600
Total	147,400	2,211,200	2,358,600	136,500	2,319,600	2,456,000	138,900	2,401,300	2,540,200
Africa									
South Africa	1,000	21,400	22,400	400	21,900	22,300	300	23,500	23,800
Other	700	37,800	38,500	500	44,400	44,900	400	49,800	50,200
Total	1,700	59,200	60,900	800	66,300	67,200	700	73,300	74,000
Asia									
Hong Kong	8,600	147,900	156,500	8,800	134,100	142,900	8,100	137,000	145,100
Israel	10,800	62,500	73,200	6,100	62,300	68,300	6,800	74,800	81,600
Japan	41,100	483,800	524,900	34,300	516,100	550,400	39,800	500,300	540,100
Taiwan	5,500	123,200	128,700	5,500	155,000	160,600	6,500	159,700	166,200
Other	25,100	297,600	322,700	22,800	353,300	376,100	29,600	423,200	452,800
Total	91,100	1,115,000	1,206,000	77,400	1,220,900	1,298,200	90,800	1,295,100	1,385,900
Central America	400	13,200	13,600	300	15,100	15,400	400	14,900	15,300
Bermuda and Caribbean									
Bermuda	400	16,600	16,900	400	19,300	19,700	--	20,600	20,700
West Indies	2,700	83,500	86,200	1,900	94,600	96,500	1,500	100,000	101,500
Total	3,100	100,100	103,200	2,300	113,900	116,200	1,500	120,700	122,200
South America	5,900	124,500	130,400	4,600	113,300	117,900	3,200	121,900	125,100
North America									
Mexico	7,800	111,800	119,600	5,800	127,000	132,900	4,400	142,600	146,900
Other	300	13,900	14,100	600	15,000	15,600	800	12,800	13,600
Total	8,100	125,600	133,700	6,400	142,000	148,400	5,200	155,300	160,600
Oceania and Other Ocean Islands									
Australia	10,900	144,500	155,400	8,700	152,400	161,100	7,000	172,500	179,500
New Zealand	2,500	38,900	41,400	1,700	39,900	41,500	3,400	34,200	37,500
Other	--	3,200	3,200	--	3,300	3,400	--	3,300	3,300
Total	13,400	186,600	200,100	10,400	195,600	206,000	10,400	210,000	220,400
Grand - Total	271,200	3,935,300	4,206,500	238,600	4,186,700	4,425,300	251,200	4,392,500	4,643,700

See footnote(s) at end of statistical tables.

Table 17

Trip Characteristics of Residents of Countries Other than the United States Entering Canada for One or More Nights, 1991-2000

Trip characteristics	1991	1992	1993	1994	1995	1996	1997	1998	1999	2000	
Person-trips	'000	2,910	2,922	3,081	3,429	3,927	4,377	4,234	3,935	4,187	4,393
Number of persons in sample		21,300	24,800	25,300	25,500	23,300	23,100	18,500	20,800	15,100	12,500
Percentage of person-trips											
Quarter of entry:											
I		12.0	11.8	11.3	11.0	11.1	11.4	13.5	12.6	13.0	13.3
II		26.6	26.8	26.5	26.6	26.2	27.4	26.7	27.1	26.1	27.5
III		44.9	44.9	45.7	45.4	45.5	44.4	43.5	43.0	43.0	41.2
IV		16.5	16.5	16.5	17.1	17.2	16.9	16.3	17.2	18.0	18.0
Total		100.0	100.0	100.0	100.0	100.0	100.0	100.0	100.0	100.0	100.0
Area of residence:											
Europe		56.3	57.3	58.7	56.5	54.0	52.3	53.4	56.2	55.4	54.7
France ¹		10.5	10.6	11.7	11.9	11.0	10.5	10.4	10.2	9.9	9.2
Germany		9.4	9.9	11.0	10.7	10.7	10.2	9.4	9.6	9.4	8.8
Italy		3.0	3.2	3.1	2.8	2.5	2.4	2.4	2.6	2.7	2.5
Netherlands		3.0	2.9	2.7	2.6	2.5	2.6	2.7	2.8	2.9	2.9
Scandinavia ²		2.0	2.0	1.8	1.7	1.6	1.6	1.8	1.8	1.9	1.9
United Kingdom		18.2	18.4	18.2	16.8	16.3	15.8	17.3	19.0	18.6	19.7
Other Europe		10.2	10.3	10.2	9.9	9.3	9.2	9.4	10.2	10.1	9.7
Africa		1.6	1.6	1.6	1.5	1.2	1.3	1.4	1.5	1.6	1.7
Asia		28.5	28.0	27.1	29.6	32.8	34.5	32.5	28.3	29.2	29.5
Japan		13.5	13.4	13.3	14.0	15.0	14.8	13.4	12.3	12.3	11.4
Other Asia		15.0	14.5	13.9	15.5	17.8	19.7	19.1	16.0	16.8	18.1
Central America		0.4	0.3	0.3	0.3	0.3	0.3	0.3	0.3	0.4	0.3
Bermuda and Caribbean		3.0	3.0	2.7	2.5	2.3	2.2	2.3	2.5	2.7	2.7
South America		3.3	2.6	2.6	2.5	2.7	2.9	2.9	3.2	2.7	2.8
North America		2.5	2.6	2.8	2.8	2.0	2.2	2.6	3.2	3.4	3.5
Oceania and Other Ocean Islands		4.5	4.6	4.2	4.4	4.6	4.4	4.7	4.7	4.7	4.8
Australia		3.4	3.5	3.1	3.4	3.6	3.4	3.5	3.7	3.6	3.9
Other		1.1	1.1	1.0	1.0	1.0	1.0	1.2	1.1	1.0	0.9
Total		100.0	100.0	100.0	100.0	100.0	100.0	100.0	100.0	100.0	100.0
Purpose of trip:											
Business, convention and employment		16.4	16.7	15.5	16.6	15.4	15.3	18.2	17.6	17.6	17.8
Visiting friends or relatives		33.3	31.1	30.0	28.0	27.3	26.8	28.4	27.3	27.8	28.4
Other pleasure, recreation or holiday		45.7	47.4	50.2	51.4	53.5	53.9	49.1	50.2	49.6	49.1
Other		4.6	4.8	4.3	4.1	3.8	4.0	4.3	4.9	5.1	4.6
Total		100.0	100.0	100.0	100.0	100.0	100.0	100.0	100.0	100.0	100.0
Sex:											
Male		46.3	46.0	44.7	45.8	45.6	46.2	46.1	45.6	45.2	45.0
Female		42.3	42.9	43.0	42.2	42.9	42.8	41.5	42.0	41.8	42.8
Not stated		11.4	11.1	12.3	12.0	11.4	11.0	12.4	12.4	13.0	12.2
Total		100.0	100.0	100.0	100.0	100.0	100.0	100.0	100.0	100.0	100.0
Age group:											
Persons under 12 years		3.8	3.9	4.3	4.0	4.3	4.0	4.5	4.1	4.6	4.9
Persons 12 years and over		84.8	85.0	83.4	84.0	84.3	84.9	83.0	83.5	82.4	82.8
Not stated		11.4	11.1	12.3	12.0	11.4	11.0	12.4	12.4	13.0	12.2
Total		100.0	100.0	100.0	100.0	100.0	100.0	100.0	100.0	100.0	100.0

See footnote(s) at end of statistical tables.

Table 18

Person-trips, Person-nights and Expenditures of Residents of Countries Other than the United States Entering Canada and Staying One or More Nights, by Selected Trip Characteristics, 2000

Trip characteristics	Person-trips	Person-nights	Average number of nights	Spending in Canada	Average spending per person-trip	Average spending per person-night	
	'000	%	'000	nights	\$'000,000	\$	
Area of residence:							
Europe	2,401	54.7	28,543	11.9	2,679	1,115.80	93.90
France ¹	404	9.2	5,198	12.9	425	1,053.30	81.80
Germany	385	8.8	4,732	12.3	413	1,073.10	87.30
Italy	108	2.5	1,048	9.7	105	968.20	100.20
Netherlands	128	2.9	1,658	12.9	146	1,142.00	88.20
Scandinavia ²	83	1.9	781	9.4	88	1,053.40	112.60
United Kingdom	866	19.7	9,324	10.8	1,004	1,159.50	107.70
Other Europe	427	9.7	5,801	13.6	498	1,166.90	85.80
Africa	73	1.7	1,094	14.9	115	1,565.30	104.90
Asia	1,295	29.5	12,252	9.5	1,580	1,220.10	129.00
Japan	500	11.4	3,299	6.6	573	1,145.90	173.80
Other Asia	795	18.1	8,953	11.3	1,007	1,266.80	112.50
Central America	15	0.3	220	14.8	15	1,007.40	68.10
Bermuda and Caribbean	121	2.7	1,562	12.9	140	1,163.10	89.90
South America	122	2.8	1,606	13.2	203	1,667.70	126.60
North America	155	3.5	1,437	9.3	186	1,198.20	129.50
Oceania and Other Ocean Islands	210	4.8	2,452	11.7	269	1,281.30	109.70
Australia	173	3.9	2,055	11.9	224	1,300.30	109.20
Other	37	0.9	398	10.6	45	1,194.00	112.50
Total	4,393	100.0	49,167	11.2	5,188	1,181.10	105.50
Purpose of trip:							
Business, convention and employment	783	17.8	5,240	6.7	1,051	1,343.40	200.60
Visiting friends or relatives	1,249	28.4	18,304	14.7	1,150	921.00	62.80
Other pleasure, recreation or holiday	2,157	49.1	22,940	10.6	2,729	1,265.10	119.00
Other	204	4.6	2,683	13.2	258	1,263.70	96.10
Total	4,393	100.0	49,167	11.2	5,188	1,181.10	105.50
Night group:							
1 night	189	4.3	189	1.0	40	210.90	210.90
2-6 nights	1,524	34.7	6,116	4.0	1,219	799.80	199.30
7-13 nights	1,386	31.6	13,164	9.5	1,815	1,309.50	137.90
14-20 nights	743	16.9	12,085	16.3	1,117	1,503.10	92.40
21 nights and over	550	12.5	17,613	32.0	997	1,812.70	56.60
Total	4,393	100.0	49,167	11.2	5,188	1,181.10	105.50
Quarter of entry:							
I	585	13.3	5,372	9.2	679	1,160.50	126.30
II	1,206	27.5	14,257	11.8	1,408	1,167.10	98.80
III	1,812	41.2	21,715	12.0	2,221	1,225.70	102.30
IV	790	18.0	7,823	9.9	881	1,115.60	112.60
Total	4,393	100.0	49,167	11.2	5,188	1,181.10	105.50

See footnote(s) at end of statistical tables.

Table 19

Person-trips by Residents of Countries Other than the United States Entering Canada and Staying One or More Nights, by Selected Trip Characteristics and Purpose of Trip, 2000

Trip characteristics	Business, convention and employment	Visiting friends or relatives	Other pleasure, recreation or holiday	Other	Total
'000					
Area of residence:					
Europe	337	722	1,265	78	2,401
France ¹	57	118	219	10	404
Germany	35	92	248	10	385
Italy	33	25	46	3	109
Netherlands	16	40	66	7	128
Scandinavia ²	26	25	27	5	83
United Kingdom	84	294	459	29	866
Other Europe	85	127	201	14	427
Africa	25	36	9	3	73
Asia	321	328	569	77	1,295
Japan	154	56	256	35	500
Other Asia	167	272	313	43	795
Central America	2	6	6	1	15
Bermuda and Caribbean	20	45	47	9	121
South America	27	26	54	14	122
North America	26	29	84	16	155
Oceania and Other Ocean Islands	24	57	124	5	210
Australia	19	44	106	4	173
Other	6	13	18	2	38
Total	783	1,249	2,157	204	4,393
Quarter of entry:					
I	147	151	258	28	585
II	238	306	599	64	1,206
III	230	523	987	71	1,812
IV	167	269	313	41	790
Total	783	1,249	2,157	204	4,393
Sex:					
Male	502	497	900	76	1,975
Female	161	615	1,011	92	1,879
Not stated	120	136	246	36	538
Total	783	1,249	2,157	204	4,393

See footnote(s) at end of statistical tables.

Table 20

Trip Characteristics of Residents of Countries Other than the United States Entering Canada, Staying One or More Nights in Province Visited, 2000

Trip characteristics		Atlantic Provinces	Québec	Ontario	Manitoba	Saskatchewan	Alberta	British Columbia ¹	Canada
Number of province-visits	'000	435	1,082	1,986	96	65	834	1,461	5,959
Spending in province	\$'000,000	337	917	1,643	71	35	730	1,457	5,188
Average spending per province-visit	\$	774.60	847.80	827.50	730.80	530.10	875.00	996.90	870.70
Number of visit-nights	'000	3,566	8,758	18,162	787	511	6,129	11,253	49,167
Average number of nights		8.2	8.1	9.1	8.2	7.8	7.4	7.7	8.3
Average spending per visit-night	\$	94.40	104.70	90.50	89.60	67.60	119.00	129.40	105.50
Area of residence:									
		'000							
Europe		329	704	1,044	62	35	446	595	3,215
France ²		19	340	141	6	4	19	18	546
Germany		79	72	153	11	5	84	124	527
Italy		17	37	54	4	-	9	32	153
Netherlands		25	13	48	3	4	49	51	193
Scandinavia ³		19	9	30	3	2	13	23	99
United Kingdom		121	111	421	23	15	210	242	1,143
Other Europe		49	122	196	12	7	63	106	554
Africa		13	27	31	1	2	9	12	95
Asia		49	205	601	20	17	280	622	1,794
Japan		19	60	201	7	8	146	261	702
Other Asia		30	145	400	14	9	134	361	1,092
Central America		1	6	10	--	-	2	3	20
Bermuda and Caribbean		11	26	81	3	5	5	12	142
South America		4	39	69	2	1	20	33	169
North America		14	49	74	2	--	4	52	196
Oceania and Other Ocean Islands		15	27	76	6	5	67	132	328
Australia		14	22	63	5	4	55	108	272
Other		--	5	13	1	1	12	24	56
Total		435	1,082	1,986	96	65	834	1,461	5,959
Purpose of trip:									
Business, convention and employment		64	221	390	18	13	88	173	968
Visiting friends or relatives		116	288	661	38	26	145	284	1,558
Other pleasure, recreation or holiday		241	536	835	33	21	568	939	3,174
Other		13	37	99	7	5	33	65	260
Total		435	1,082	1,986	96	65	834	1,461	5,959
Quarter of entry:									
I		33	127	200	12	6	85	218	680
II		143	265	583	22	22	230	398	1,664
III		205	495	873	45	25	419	594	2,656
IV		53	195	330	18	12	100	251	958
Total		435	1,082	1,986	96	65	834	1,461	5,959

See footnote(s) at end of statistical tables.

Table 21

Person-trips by Canadian Residents Returning from the United States, by Type of Transportation, Quarterly, 1991-2000

Type of transportation	1991	1992	1993	1994	1995	1996	1997	1998	1999	2000
	'000									
FIRST QUARTER										
Same day	13,014	13,812	10,951	9,024	7,937	8,277	8,035	6,769	5,828	6,265
One or more nights:										
Automobile	2,382	2,545	2,207	1,880	1,716	1,770	1,732	1,455	1,318	1,483
Plane	1,180	1,289	1,328	1,246	1,173	1,472	1,456	1,422	1,411	1,591
Bus	135	150	150	129	141	135	159	136	127	147
Other methods ¹	26	28	25	25	26	22	28	27	27	29
Total	3,723	4,012	3,710	3,281	3,055	3,399	3,375	3,040	2,883	3,250
Grand – Total	16,737	17,824	14,661	12,304	10,992	11,676	11,410	9,809	8,711	9,515
SECOND QUARTER										
Same day	15,749	15,384	13,560	9,930	9,766	9,895	9,223	8,091	7,154	7,201
One or more nights:										
Automobile	3,260	3,164	2,914	2,486	2,374	2,331	2,210	2,034	1,960	1,958
Plane	866	909	919	913	884	1,066	1,136	1,116	1,191	1,336
Bus	167	182	206	188	182	181	199	199	205	215
Other methods ¹	149	133	142	132	150	168	176	182	179	187
Total	4,444	4,388	4,180	3,719	3,590	3,745	3,721	3,531	3,534	3,697
Grand – Total	20,192	19,772	17,741	13,649	13,356	13,640	12,945	11,622	10,688	10,898
THIRD QUARTER										
Same day	16,582	16,613	13,989	11,054	10,935	10,544	10,337	7,994	8,261	8,116
One or more nights:										
Automobile	5,839	5,518	4,927	3,825	3,815	3,803	3,645	2,792	3,122	3,106
Plane	655	690	707	679	742	875	913	887	1,050	1,111
Bus	176	179	186	193	185	197	207	186	200	205
Other methods ¹	377	365	384	323	300	314	307	301	332	330
Total	7,046	6,751	6,204	5,019	5,042	5,189	5,072	4,166	4,704	4,753
Grand – Total	23,627	23,363	20,193	16,074	15,978	15,733	15,409	12,160	12,965	12,869
FOURTH QUARTER										
Same day	14,893	12,320	10,949	9,335	8,853	8,682	8,219	6,484	6,838	6,436
One or more nights:										
Automobile	2,808	2,326	2,106	1,867	1,780	1,676	1,616	1,325	1,469	1,419
Plane	885	920	902	872	1,002	1,083	1,130	1,178	1,310	1,315
Bus	155	149	141	154	145	159	163	139	162	161
Other methods ¹	53	52	49	58	47	50	50	51	54	53
Total	3,901	3,447	3,199	2,951	2,975	2,968	2,959	2,693	2,994	2,948
Grand – Total	18,794	15,768	14,147	12,286	11,827	11,650	11,178	9,177	9,832	9,384
YEAR										
Same day	60,237	58,129	49,448	39,343	37,491	37,398	35,815	29,337	28,081	28,019
One or more nights:										
Automobile	14,289	13,552	12,154	10,057	9,686	9,579	9,203	7,605	7,869	7,966
Plane	3,586	3,807	3,857	3,710	3,802	4,496	4,636	4,603	4,962	5,354
Bus	633	660	683	665	652	672	728	661	694	728
Other methods ¹	605	578	599	538	523	554	561	561	592	599
Total	19,113	18,598	17,293	14,970	14,663	15,301	15,127	13,430	14,116	14,648
Grand – Total	79,351	76,728	66,741	54,313	52,153	52,699	50,942	42,768	42,196	42,666

See footnote(s) at end of statistical tables.

Table 22

Trip Characteristics of Canadian Residents Returning from the United States After a Stay of One or More Nights, 1991-2000

Trip characteristics	1991	1992	1993	1994	1995	1996	1997	1998	1999	2000	
Person-trips	'000	19,113	18,598	17,293	14,970	14,663	15,301	15,127	13,430	14,116	14,648
Number of persons in sample		68,600	66,700	66,600	54,500	52,400	53,400	48,700	40,800	43,800	42,600
Percentage of person-trips											
Type of transportation:											
Automobile		74.8	72.9	70.3	67.2	66.1	62.6	60.8	56.6	55.7	54.4
Plane		18.8	20.5	22.3	24.8	25.9	29.4	30.6	34.3	35.1	36.6
Bus		3.3	3.5	4.0	4.4	4.4	4.4	4.8	4.9	4.9	5.0
Other methods ¹		3.1	3.1	3.5	3.6	3.6	3.6	3.7	4.2	4.2	4.1
Total		100.0	100.0	100.0	100.0	100.0	100.0	100.0	100.0	100.0	100.0
Quarter of re-entry:											
I		19.5	21.6	21.5	21.9	20.8	22.2	22.3	22.6	20.4	22.2
II		23.2	23.6	24.2	24.8	24.5	24.5	24.6	26.3	25.0	25.2
III		36.9	36.3	35.9	33.5	34.4	33.9	33.5	31.0	33.3	32.5
IV		20.4	18.5	18.5	19.7	20.3	19.4	19.6	20.1	21.2	20.1
Total		100.0	100.0	100.0	100.0	100.0	100.0	100.0	100.0	100.0	100.0
Region of destination:											
New England		13.7	13.0	12.5	12.0	12.3	11.8	12.0	10.7	11.0	10.9
Middle Atlantic		24.7	24.5	23.9	23.2	22.1	21.9	20.8	21.7	21.6	21.1
South Atlantic		9.5	10.6	10.9	10.6	10.2	11.4	12.3	11.9	11.9	13.4
East North Central		11.7	12.6	13.0	13.7	13.6	13.0	12.6	13.3	12.9	12.8
West North Central		7.5	6.8	6.7	6.2	6.9	6.3	6.1	5.4	5.7	5.6
East South Central		0.6	0.6	0.6	0.7	0.7	0.6	0.6	0.8	0.8	0.7
West South Central		0.9	0.9	1.2	1.3	1.6	1.6	1.5	2.1	2.4	2.4
Mountain		8.1	8.1	8.1	8.7	8.5	9.2	9.0	9.4	8.8	9.1
Pacific		16.2	15.5	15.5	15.8	16.6	16.4	17.1	17.2	17.4	16.3
Alaska		0.3	0.4	0.5	0.6	0.5	0.6	0.6	0.7	0.7	0.7
Hawaii		1.1	1.2	1.3	1.4	1.6	1.9	1.8	1.6	1.9	2.1
Touring ²		5.6	5.7	5.9	5.8	5.4	5.5	5.6	5.3	4.8	4.8
Total		100.0	100.0	100.0	100.0	100.0	100.0	100.0	100.0	100.0	100.0
Purpose of trip:											
Business, convention and employment		10.5	11.6	12.3	15.1	15.4	15.8	15.5	19.1	19.0	18.7
Visiting friends or relatives		14.7	16.1	16.6	17.2	17.9	17.3	18.0	19.6	19.5	19.7
Other pleasure, recreation or holiday		60.9	60.5	60.5	57.6	56.7	57.6	57.1	52.1	52.2	52.9
Other		13.9	11.9	10.6	10.1	10.0	9.3	9.4	9.2	9.3	8.7
Total		100.0	100.0	100.0	100.0	100.0	100.0	100.0	100.0	100.0	100.0
Night group:											
1 night		11.7	12.1	12.5	13.4	13.4	12.9	13.1	13.0	13.4	12.7
2-6 nights		57.6	57.5	56.4	56.3	57.2	56.1	55.6	56.2	57.0	56.3
7-13 nights		19.8	18.5	19.5	18.9	18.8	20.4	20.7	20.3	20.3	21.2
14-20 nights		6.1	6.4	6.2	6.0	5.6	6.0	5.8	5.7	4.8	5.4
21 nights and over		4.8	5.4	5.4	5.4	5.0	4.6	4.8	4.8	4.5	4.5
Total		100.0	100.0	100.0	100.0	100.0	100.0	100.0	100.0	100.0	100.0

See footnote(s) at end of statistical tables.

Table 23

Person-trips, Person-nights and Expenditures of Canadian Residents Returning from the United States After a Stay of One or More Nights, by Selected Trip Characteristics, 2000

Trip characteristics	Person-trips	Person-nights	Average number of nights	Spending in United States	Average spending per person-trip	Average spending per person-night
	'000	%	'000	nights	\$'000,000	\$
Type of transportation:						
Automobile	7,966	54.4	57,398	7.2	3,265	409.90
Non-automobile:						
Plane	5,354	36.6	39,012	7.3	5,238	978.40
Bus	728	5.0	3,438	4.7	289	396.60
Other methods ²	599	4.1	3,176	5.3	183	305.00
Total	6,681	45.6	45,626	6.8	5,710	85.50
Grand - Total	14,648	100.0	103,024	7.0	8,975	612.70
Region of destination:						
New England	1,594	10.9	7,227	4.5	583	365.70
Middle Atlantic	3,092	21.1	8,676	2.8	906	292.90
South Atlantic	1,963	13.4	28,200	14.4	2,255	1,148.60
East North Central	1,878	12.8	5,908	3.1	647	344.60
West North Central	826	5.6	2,962	3.6	296	358.60
East South Central	104	0.7	599	5.8	88	846.30
West South Central	351	2.4	2,605	7.4	383	1,091.10
Mountain	1,340	9.1	10,178	7.6	1,113	830.60
Pacific	2,381	16.3	13,175	5.5	1,228	515.90
Alaska	109	0.7	744	6.8	46	419.40
Hawaii	303	2.1	3,876	12.8	476	1,573.00
Touring ²	707	4.8	18,875	26.7	954	1,349.00
Total	14,648	100.0	103,024	7.0	8,975	612.70
Purpose of trip:						
Business, convention and employment	2,739	18.7	11,364	4.1	2,562	935.60
Visiting friends or relatives	2,881	19.7	16,770	5.8	816	283.20
Other pleasure, recreation or holiday	7,752	52.9	69,355	8.9	5,163	666.10
Other	1,276	8.7	5,535	4.3	434	339.40
Total	14,648	100.0	103,024	7.0	8,975	612.70
Night group:						
1 night	1,853	12.7	1,853	1.0	258	139.10
2-6 nights	8,243	56.3	27,081	3.3	3,628	440.10
7-13 nights	3,104	21.2	26,879	8.7	2,630	847.50
14-20 nights	784	5.4	12,242	15.6	911	1,161.50
21 nights and over	663	4.5	34,969	52.7	1,548	2,333.70
Total	14,648	100.0	103,024	7.0	8,975	612.70
Quarter of re-entry:						
I	3,250	22.2	29,644	9.1	2,523	776.20
II	3,697	25.2	33,278	9.0	2,533	685.20
III	4,753	32.4	23,264	4.9	2,112	444.40
IV	2,948	20.1	16,837	5.7	1,807	613.00
Total	14,648	100.0	103,024	7.0	8,975	612.70

See footnote(s) at end of statistical tables.

Table 24

Trip Characteristics of Canadian Residents Returning from the United States After a Stay of One or More Nights, by Quarter of Re-entry, 1999 and 2000

Trip characteristics	1999					2000				
	I	II	III	IV	Total	I	II	III	IV	Total
Person-trips	'000					'000				
Region of destination:										
New England	191	362	715	283	1,552	207	331	773	284	1,594
Middle Atlantic	457	824	1,197	575	3,052	508	796	1,196	591	3,092
South Atlantic	583	415	286	398	1,682	734	517	264	448	1,963
East North Central	295	445	625	453	1,818	317	471	665	425	1,878
West North Central	128	200	293	183	804	163	210	290	163	826
East South Central	24	37	19	34	114	38	31	19	16	104
West South Central	93	76	74	99	343	97	82	81	91	351
Mountain	330	307	358	254	1,248	329	335	400	277	1,340
Pacific	476	590	843	548	2,456	496	606	793	487	2,381
Alaska	2	36	61	4	102	3	44	57	5	109
Hawaii	103	49	51	64	266	133	53	51	66	303
Touring ¹	203	193	182	100	678	227	221	163	96	707
Total	2,883	3,534	4,704	2,994	14,116	3,250	3,697	4,753	2,948	14,648
Purpose of trip:										
Business, convention and employment	625	722	671	668	2,685	675	763	689	611	2,739
Visiting friends or relatives	520	671	868	697	2,755	574	685	901	721	2,881
Other pleasure, recreation or holiday	1,508	1,816	2,720	1,320	7,365	1,786	1,927	2,697	1,341	7,752
Other	231	326	445	309	1,311	215	322	465	275	1,276
Total	2,883	3,534	4,704	2,994	14,116	3,250	3,697	4,753	2,948	14,648
Night group:										
1 night	322	484	668	418	1,892	353	466	651	383	1,853
2-6 nights	1,356	2,133	2,812	1,745	8,046	1,429	2,147	2,967	1,701	8,243
7-13 nights	708	569	978	610	2,865	877	711	881	635	3,104
14-20 nights	233	143	173	122	671	306	168	186	125	784
21 nights and over	264	204	74	100	641	286	205	67	105	663
Total	2,883	3,534	4,704	2,994	14,116	3,250	3,697	4,753	2,948	14,648
Sex:										
Male	1,377	1,623	2,125	1,394	6,518	1,521	1,698	2,109	1,319	6,647
Female	1,254	1,595	2,247	1,357	6,452	1,487	1,705	2,280	1,380	6,851
Not stated	253	316	332	244	1,145	242	294	364	250	1,149
Total	2,883	3,534	4,704	2,994	14,116	3,250	3,697	4,753	2,948	14,648
Age group:										
Under 12 years	171	150	345	123	789	217	188	365	118	887
12-19 years	111	106	307	101	624	148	121	287	88	643
20-24 years	113	103	194	91	500	124	95	181	91	492
25-34 years	329	402	535	342	1,607	366	410	535	321	1,633
35-44 years	486	583	845	575	2,489	563	632	870	562	2,627
45-54 years	589	719	949	631	2,888	662	748	920	624	2,953
55-64 years	479	599	684	504	2,267	539	615	714	493	2,361
65 years and over	353	556	513	383	1,806	390	594	516	403	1,903
Not stated	253	316	332	244	1,145	242	294	364	250	1,149
Total	2,883	3,534	4,704	2,994	14,116	3,250	3,697	4,753	2,948	14,648

See footnote(s) at end of statistical tables.

Table 25

Trip Characteristics of Canadian Residents Returning from the United States After a Stay of One or More Nights, by Type of Transportation, 1999 and 2000

Trip characteristics	1999			2000		
	Automobile	Non-automobile	Total	Automobile	Non-automobile	Total
Person-trips		'000			'000	
Region of destination:						
New England	1,143	409	1,552	1,190	404	1,594
Middle Atlantic	2,157	896	3,052	2,158	934	3,092
South Atlantic	314	1,368	1,682	315	1,649	1,963
East North Central	1,159	660	1,818	1,184	694	1,878
West North Central	544	260	804	562	263	826
East South Central	17	97	114	19	85	104
West South Central	11	332	343	13	338	351
Mountain	503	745	1,248	525	816	1,340
Pacific	1,423	1,033	2,456	1,397	984	2,381
Alaska	34	68	102	30	79	109
Hawaii	1	266	266	-	303	303
Touring ¹	563	115	678	575	132	707
Total	7,869	6,247	14,116	7,966	6,681	14,648
Purpose of trip:						
Business, convention and employment	541	2,144	2,685	558	2,181	2,739
Visiting friends or relatives	1,896	859	2,755	1,993	888	2,881
Other pleasure, recreation or holiday	4,471	2,894	7,365	4,485	3,267	7,752
Other	960	351	1,311	931	345	1,276
Total	7,869	6,247	14,116	7,966	6,681	14,648
Night group:						
1 night	1,461	431	1,892	1,426	427	1,853
2-6 nights	4,505	3,541	8,046	4,646	3,597	8,243
7-13 nights	1,182	1,683	2,865	1,139	1,965	3,104
14-20 nights	295	377	671	334	450	784
21 nights and over	425	216	641	421	242	663
Total	7,869	6,247	14,116	7,966	6,681	14,648
Sex:						
Male	3,544	2,975	6,518	3,577	3,070	6,647
Female	3,879	2,573	6,452	3,966	2,885	6,851
Not stated	445	700	1,145	424	725	1,149
Total	7,869	6,247	14,116	7,966	6,681	14,648
Age group:						
Under 12 years	591	198	789	636	251	887
12-19 years	481	144	624	462	181	643
20-24 years	293	207	500	291	201	492
25-34 years	742	865	1,607	761	871	1,633
35-44 years	1,196	1,293	2,489	1,168	1,459	2,627
45-54 years	1,525	1,363	2,888	1,510	1,443	2,953
55-64 years	1,398	869	2,267	1,491	870	2,361
65 years and over	1,197	609	1,806	1,223	679	1,903
Not stated	445	700	1,145	424	725	1,149
Total	7,869	6,247	14,116	7,966	6,681	14,648

See footnote(s) at end of statistical tables.

Table 26

Trip Characteristics of Canadian Residents Returning from the United States After a Stay of One or More Nights, by Purpose of Trip, 2000

Trip characteristics	Business, convention and employment	Visiting friends or relatives	Other pleasure, recreation or holiday	Other	Total
Person-trips			'000		
Sex:	2,739	2,881	7,752	--	14,648
Male	1,640	1,119	3,374	--	6,647
Female	841	1,548	3,829	--	6,851
Not stated	257	214	549	128	1,149
Age group:	2,739	2,881	7,752	--	14,648
Under 12 years	34	209	585	--	887
12-19 years	24	141	404	--	643
20-24 years	58	117	241	--	492
25-34 years	468	333	696	--	1,633
35-44 years	820	359	1,258	--	2,627
45-54 years	708	544	1,465	--	2,953
55-64 years	297	483	1,362	--	2,361
65 years and over	72	481	1,192	--	1,903
Not stated	257	214	549	128	1,149
Province of Residence:	2,739	2,881	7,752	--	14,648
Atlantic Provinces	97	115	255	--	530
Québec	382	461	1,639	--	2,626
Ontario	1,556	1,469	3,327	--	7,047
Manitoba	73	87	321	--	552
Saskatchewan	36	62	135	--	258
Alberta	258	202	634	--	1,178
British Columbia, Yukon, Northwest Territories and Nunavet	337	485	1,442	--	2,456
Region of destination:	2,739	2,881	7,752	--	14,648
New England	197	343	901	--	1,594
Middle Atlantic	415	700	1,611	--	3,092
South Atlantic	478	234	1,202	--	1,963
East North Central	500	540	584	--	1,878
West North Central	150	129	427	--	826
East South Central	58	14	24	--	104
West South Central	216	56	65	--	351
Mountain	240	182	839	--	1,340
Pacific	406	566	1,237	--	2,381
Alaska	7	5	94	--	109
Hawaii	18	5	267	--	303
Touring ¹	55	107	500	45	707
Night group:	2,739	2,881	7,752	--	14,648
1 night	474	380	688	--	1,853
2-6 nights	1,877	1,653	3,933	--	8,243
7-13 nights	316	593	2,059	--	3,104
14-20 nights	48	166	546	--	784
21 nights and over	24	89	526	25	663
Quarter of re-entry:	2,739	2,881	7,752	--	14,648
I	675	574	1,786	--	3,250
II	763	685	1,927	--	3,697
III	689	901	2,697	--	4,753
IV	611	721	1,341	--	2,948

See footnote(s) at end of statistical tables.

Table 27

Trip Characteristics of Canadian Residents Returning from the United States, by Province of Residence, 2000

Trip characteristics		Atlantic Provinces	Québec	Ontario	Manitoba	Saskatchewan	Alberta	British Columbia ¹	Canada
Same day:									
Person-trips	'000	3,891	2,865	14,465	713	184	225	5,676	28,019
Spending	\$'000,000	126	97.0	612	33	13	8	201	1,089
Average spending per person-trip	\$	32.30	33.90	42.30	46.20	67.90	33.80	35.40	38.90
One or more nights:									
Person-trips	'000	530	2,626	7,047	552	258	1,178	2,456	14,648
Spending	\$'000,000	405	1,488	4,403	293	168	918	1,301	8,975
Average spending per person-trip	\$	764.00	566.50	624.80	530.40	650.40	779.10	529.70	612.70
Person-nights	'000	4,621	19,097	49,969	3,524	1,910	9,330	14,573	103,024
Average number of nights		8.7	7.3	7.1	6.4	7.4	7.9	5.9	7.0
Average spending per person-night	\$	87.60	77.90	88.10	83.00	88.00	98.40	89.30	87.10
Total									
Person-trips	'000	4,421	5,491	21,513	1,264	442	1,403	8,132	42,666
Spending	\$'000,000	531	1,585	5,015	326	181	925	1,502	10,064
Person-trips, one or more nights					'000				
Type of transportation:									
Automobile		279	1,510	3,726	350	143	499	1,460	7,966
Non-automobile		251	1,116	3,322	201	116	679	996	6,681
Total		530	2,626	7,047	552	258	1,178	2,456	14,648
Region of destination:									
New England		261	898	371	5	3	21	34	1,594
Middle Atlantic		50	858	2,060	8	7	53	55	3,092
South Atlantic		79	514	1,167	33	14	74	82	1,963
East North Central		14	81	1,641	35	15	48	44	1,878
West North Central		4	16	295	343	96	56	16	826
East South Central		4	7	72	6	2	6	7	104
West South Central		13	27	210	13	6	54	28	351
Mountain		27	89	259	30	66	546	324	1,340
Pacific		27	73	348	32	24	229	1,647	2,381
Alaska		2	7	34	6	4	15	41	109
Hawaii		4	8	69	14	12	48	149	303
Touring ²		45	47	522	25	9	28	31	707
Total		530	2,626	7,047	552	258	1,178	2,456	14,648
Purpose of trip:									
Business, convention and employment		97	382	1,556	73	36	258	337	2,739
Visiting friends or relatives		115	461	1,469	87	62	202	485	2,881
Other pleasure, recreation or holiday		255	1,639	3,327	321	135	634	1,442	7,752
Other		63	145	695	70	25	84	192	1,276
Total		530	2,626	7,047	552	258	1,178	2,456	14,648
Quarter of re-entry:									
I		118	484	1,654	132	66	248	548	3,250
II		159	658	1,785	128	58	283	627	3,697
III		139	1,032	2,151	186	75	417	753	4,753
IV		114	453	1,458	105	59	230	529	2,948
Total		530	2,626	7,047	552	258	1,178	2,456	14,648
Province of re-entry:									
Atlantic Provinces		367	20	55	1	1	4	4	452
Québec		21	2,363	199	1	1	16	15	2,616
Ontario		129	219	6,655	46	21	111	90	7,270
Manitoba		1	-	15	464	12	11	6	510
Saskatchewan		-	-	9	1	154	12	1	176
Alberta		-	1	13	2	34	707	20	778
British Columbia, Yukon and Northwest Territories		11	24	101	36	37	318	2,319	2,845
Total		530	2,626	7,047	552	258	1,178	2,456	14,648

Table 27

Trip Characteristics of Canadian Residents Returning from the United States, by Province of Residence, 2000 - Concluded

Trip characteristics	Atlantic Provinces	Québec	Ontario	Manitoba	Saskatchewan	Alberta	British Columbia ¹	Canada
Person-trips, one or more nights	'000							
Night group:								
1 night	43	276	972	66	18	75	404	1,853
2-6 nights	277	1,592	3,891	356	141	640	1,346	8,243
7-13 nights	140	465	1,546	76	68	311	498	3,104
14-20 nights	36	156	336	28	19	87	122	784
21 nights and over	34	138	303	24	13	66	86	663
Total	530	2,626	7,047	552	258	1,178	2,456	14,648
Sex:								
Male	232	1,199	3,231	245	108	545	1,087	6,647
Female	263	1,227	3,218	272	128	566	1,177	6,851
Not stated	35	200	598	34	23	67	192	1,149
Total	530	2,626	7,047	552	258	1,178	2,456	14,648
Age group:								
Under 12 years	27	179	425	34	16	76	129	887
12-19 years	20	124	298	34	14	65	89	643
20-24 years	17	108	224	24	10	35	74	492
25-34 years	57	315	810	58	23	138	232	1,633
35-44 years	81	519	1,284	80	42	220	401	2,627
45-54 years	122	471	1,518	106	46	252	439	2,953
55-64 years	106	398	1,103	97	43	179	435	2,361
65 years and over	65	313	786	84	44	145	466	1,903
Not stated	35	200	598	34	23	67	192	1,149
Total	530	2,626	7,047	552	258	1,178	2,456	14,648

See footnote(s) at end of statistical tables.

Table 28

Visits, Expenditures and Length of Stay of Canadian Residents¹ Returning from the United States, by Selected States, 2000

Selected states	Same day ²			One or more nights				Total		
	Visits		Spending	Visits		Spending	Visit-nights	Visits		Spending
	'000	%	\$'000,000	'000	%	\$'000,000		'000	%	
Arizona	70	0.6	2.6	292	1.5	286.8	4,431	361	1.1	289.4
California	165	1.4	2.1	1,011	5.1	923.3	7,926	1,176	3.7	925.4
Colorado	46	0.4	1.3	132	0.7	106.2	774	178	0.6	107.6
Connecticut	63	0.5	1.2	149	0.8	46.9	600	212	0.7	48.1
D. C.	86	0.7	3.0	144	0.7	102.4	524	229	0.7	105.4
Florida	202	1.7	3.1	1,967	9.9	2,109.9	33,676	2,168	6.8	2,113.0
Georgia	435	3.6	6.6	362	1.8	136.8	1,185	796	2.5	143.4
Hawaii	48	0.4	0.5	323	1.6	487.3	3,819	371	1.2	487.9
Idaho	318	2.7	3.7	199	1.0	38.6	642	517	1.6	42.3
Illinois	326	2.7	5.0	398	2.0	241.3	1,278	724	2.3	246.3
Kentucky	187	1.6	2.3	268	1.3	31.4	521	455	1.4	33.7
Louisiana	23	0.2	2.1	116	0.6	96.9	557	139	0.4	99.0
Maine	201	1.7	5.7	683	3.4	156.7	2,260	884	2.8	162.5
Maryland	311	2.6	4.8	192	1.0	54.1	598	503	1.6	58.9
Massachusetts	230	1.9	5.8	472	2.4	208.5	1,955	702	2.2	214.3
Michigan	966	8.1	23.6	1,229	6.2	228.0	3,110	2,195	6.9	251.6
Minnesota	299	2.5	11.0	511	2.6	134.9	1,327	810	2.5	145.9
Montana	104	0.9	1.7	462	2.3	100.7	1,501	566	1.8	102.4
Nevada	80	0.7	1.3	786	3.9	576.1	3,614	865	2.7	577.4
New Hampshire	499	4.2	7.8	299	1.5	53.6	787	797	2.5	61.4
New Jersey	123	1.0	3.6	254	1.3	103.9	1,054	377	1.2	107.5
New York	2,113	17.6	42.9	2,333	11.7	643.9	6,273	4,446	13.9	686.7
North Carolina	398	3.3	6.1	366	1.8	96.6	1,177	764	2.4	102.7
North Dakota	173	1.4	3.8	333	1.7	51.7	684	505	1.6	55.5
Ohio	360	3.0	5.9	513	2.6	116.1	1,246	873	2.7	122.0
Oregon	79	0.7	1.6	325	1.6	77.5	1,220	404	1.3	79.1
Pennsylvania	710	5.9	9.8	662	3.3	157.2	1,643	1,372	4.3	166.9
South Carolina	291	2.4	3.5	364	1.8	205.5	2,362	656	2.1	209.0
Tennessee	179	1.5	2.3	297	1.5	71.5	671	475	1.5	73.8
Texas	79	0.7	1.2	352	1.8	329.7	3,004	431	1.4	330.9
Utah	67	0.6	0.9	115	0.6	38.8	412	182	0.6	39.7
Vermont	751	6.3	10.5	610	3.1	99.5	1,728	1,361	4.3	110.0
Virginia	372	3.1	4.2	425	2.1	100.8	1,247	797	2.5	105.0
Washington	425	3.5	10.4	1,582	8.0	259.1	4,544	2,007	6.3	269.5
Wisconsin	129	1.1	2.0	177	0.9	48.1	522	305	1.0	50.1
Other States	1,080	9.0	27.3	1,188	6.0	339.6	3,586	2,268	7.1	366.9
Total	11,986	100.0	231.4	19,889	100.0	8,859.9	102,458	31,875	100.0	9,091.2

See footnote(s) at end of statistical tables.

Table 29

Trip Characteristics of Canadian Residents Returning from Countries Other than the United States, 1991-2000

Trip characteristics	1991	1992	1993	1994	1995	1996	1997	1998	1999	2000
Person-trips '000	2,824	3,103	3,268	3,374	3,543	3,672	3,984	4,218	4,252	4,516
Number of persons in sample	27,745	22,740	20,008	19,920	14,952	14,277	13,011	12,364	11,221	11,622
Percentage of person-trips										
Quarter of re-entry:										
I	31.0	31.6	31.5	32.0	32.5	33.6	33.1	33.1	34.4	31.3
II	21.4	21.8	22.2	22.2	22.0	21.5	21.9	22.0	22.3	23.2
III	26.6	26.9	26.5	25.8	25.6	24.9	25.0	24.5	23.2	24.6
IV	21.0	19.7	19.8	19.9	19.8	20.0	20.0	20.4	20.1	20.9
Total	100.0	100.0	100.0	100.0	100.0	100.0	100.0	100.0	100.0	100.0
Area of destination:										
Europe	44.3	45.2	44.7	45.4	45.9	43.7	41.1	43.5	41.3	41.9
United Kingdom only	13.8	13.1	12.9	13.8	13.1	12.1	12.4	12.2	12.0	11.5
United Kingdom and Other Europe	6.0	5.9	5.8	5.3	6.3	6.6	5.8	6.3	6.6	5.8
Other Europe	23.6	25.0	24.8	25.4	25.2	23.8	21.7	23.8	21.6	23.6
Europe and one other area of destination	1.0	1.2	1.3	0.9	1.2	1.2	1.3	1.2	1.1	1.0
Africa	1.4	1.5	1.4	1.4	1.9	1.9	2.3	2.3	1.9	1.8
Asia	7.4	8.4	9.9	9.6	9.2	11.4	11.4	10.5	10.5	9.7
Central America	1.6	2.1	1.4	2.6	2.4	1.8	1.5	1.0	1.5	1.4
Bermuda and Caribbean	21.0	19.7	21.4	20.1	19.5	18.7	17.6	16.4	19.0	17.8
South America	4.0	3.7	2.9	2.6	2.8	3.1	3.3	2.8	3.1	3.2
Other Areas	15.2	14.1	13.3	13.6	13.3	13.7	16.5	16.5	16.2	18.0
Cruises	5.1	5.2	4.9	4.5	5.1	5.2	6.2	6.9	6.2	6.1
Combined destinations ¹	0.1	0.2	0.2	0.2	0.1	0.3	0.1	0.1	0.3	0.1
Total	100.0	100.0	100.0	100.0	100.0	100.0	100.0	100.0	100.0	100.0
Purpose of trip:										
Business, convention and employment	15.0	15.4	16.6	16.0	16.6	16.9	17.8	17.5	16.1	16.8
Visiting friends or relatives	19.3	19.5	18.9	20.2	19.3	19.6	18.9	20.4	17.7	17.8
Other pleasure, recreation or holiday	59.9	59.1	58.4	57.2	57.5	56.0	56.9	56.8	59.8	59.6
Other	5.7	6.0	6.1	6.6	6.6	7.5	6.4	5.4	6.4	5.7
Total	100.0	100.0	100.0	100.0	100.0	100.0	100.0	100.0	100.0	100.0
Night group:										
1 night	0.1	0.1	0.1	0.1	0.2	0.2	0.2	0.2	0.1	0.1
2-6 nights	6.0	6.5	6.8	6.9	7.0	7.1	8.0	8.2	8.6	8.2
7-13 nights	38.8	37.9	38.4	38.8	40.0	39.9	42.1	41.3	45.0	46.6
14-20 nights	28.9	28.9	26.9	27.0	26.4	26.2	25.2	27.5	26.3	25.6
21 nights and over	26.2	26.5	27.8	27.2	26.3	26.6	24.6	22.9	20.0	19.5
Total	100.0	100.0	100.0	100.0	100.0	100.0	100.0	100.0	100.0	100.0

See footnote(s) at end of statistical tables.

Table 30

Person-trips, Person-nights and Expenditures of Canadian Residents Returning from Countries Other than the United States, by Selected Trip Characteristics, 2000

Trip characteristics	Person-trips		Person-nights	Average number of nights	Spending in country	Average spending per person-trip	Average spending per person-night
	'000	%	'000	nights	\$'000,000	\$	\$
Area of destination:							
Europe	1,893	41.9	31,978	16.9	3,142	1,659.90	98.30
United Kingdom only	519	11.5	7,309	14.1	682	1,314.90	93.30
United Kingdom and Other Europe	262	5.8	5,591	21.4	648	2,476.70	115.90
Other Europe	1,065	23.6	18,035	16.9	1,737	1,630.60	96.30
Europe and one other area of destination	47	1.0	1,042	22.1	75	1,585.30	71.80
Africa	82	1.8	2,528	30.8	206	2,507.80	81.40
Asia	438	9.7	11,168	25.5	867	1,981.60	77.60
Central America	61	1.4	1,100	17.9	86	1,406.20	78.50
Bermuda and Caribbean	806	17.8	7,626	9.5	786	975.70	103.10
South America	142	3.2	2,566	18.0	243	1,708.50	94.80
Other Areas	812	18.0	11,110	13.7	971	1,195.30	87.40
Cruises	275	6.1	2,914	10.6	149	543.90	51.30
Combined destinations¹	7	0.1	520	79.3	47	7,098.10	89.50
Total	4,516	100.0	71,510	15.8	6,498	1,438.90	90.90
Purpose of trip:							
Business, convention and employment	761	16.8	10,917	14.3	1,633	2,146.10	149.60
Visiting friends or relatives	803	17.8	16,978	21.1	854	1,062.30	50.30
Other pleasure, recreation or holiday	2,692	59.6	37,664	14.0	3,619	1,344.00	96.10
Other	259	5.7	5,950	23.0	393	1,516.80	66.00
Total	4,516	100.0	71,510	15.8	6,498	1,438.90	90.90
Night group:							
1 night	6	0.1	6	1.0	1	230.00	230.00
2-6 nights	370	8.2	1,613	4.4	370	998.20	229.20
7-13 nights	2,104	46.6	17,585	8.4	2,304	1,094.70	131.00
14-20 nights	1,156	25.6	17,981	15.6	1,831	1,584.90	101.90
21 nights and over	879	19.5	34,325	39.0	1,991	2,264.40	58.00
Total	4,516	100.0	71,510	15.8	6,498	1,438.90	90.90
Quarter of re-entry:							
I	1,414	31.3	18,713	13.2	1,692	1,197.10	90.40
II	1,046	23.2	16,857	16.1	1,604	1,533.60	95.20
III	1,112	24.6	22,168	19.9	1,734	1,559.70	78.20
IV	944	20.9	13,772	14.6	1,467	1,554.10	106.50
Total	4,516	100.0	71,510	15.8	6,498	1,438.90	90.90

See footnote(s) at end of statistical tables.

Table 31

Trip Characteristics of Canadian Residents Returning from Countries Other than the United States, by Quarter of Re-entry, 1999 and 2000

Trip characteristics	1999					2000				
	I	II	III	IV	Total	I	II	III	IV	Total
	'000					'000				
Area of destination:										
Europe	278	474	604	397	1,754	273	536	681	403	1,893
United Kingdom only	78	130	191	108	508	87	158	179	94	519
United Kingdom and Other Europe	33	89	93	67	281	38	81	88	55	262
Other Europe	153	246	308	212	918	135	287	400	243	1,065
Europe and one other area of destination	14	10	12	10	46	13	9	13	11	47
Africa	31	21	16	14	82	26	15	17	24	82
Asia	145	83	110	109	448	109	89	129	111	438
Central America	29	16	8	10	63	38	6	10	8	61
Bermuda and Caribbean	429	136	108	136	809	379	157	113	156	806
South America	56	30	25	20	131	58	26	32	27	142
Other Areas	379	136	73	101	690	422	154	82	154	812
Cruises	114	49	40	62	264	107	63	46	58	275
Combined destinations ¹	--	4	2	5	12	1	1	3	2	7
Total	1,461	949	987	855	4,252	1,414	1,046	1,112	944	4,516
Purpose of trip:										
Business, convention and employment	159	156	180	190	684	150	171	227	213	761
Visiting friends or relatives	168	199	230	155	752	168	211	266	159	803
Other pleasure, recreation or holiday	1,061	525	502	455	2,544	1,027	605	539	521	2,692
Other	72	70	76	54	272	68	60	80	51	259
Total	1,461	949	987	855	4,252	1,414	1,046	1,112	944	4,516
Night group:										
1 night	-	1	3	--	5	2	1	2	1	6
2-6 nights	97	86	92	92	367	90	90	91	100	370
7-13 nights	781	408	321	404	1,914	816	466	357	465	2,104
14-20 nights	378	250	268	220	1,116	326	284	327	219	1,156
21 nights and over	205	204	302	138	849	181	205	334	160	879
Total	1,461	949	987	855	4,252	1,414	1,046	1,112	944	4,516
Sex:										
Male	642	403	426	392	1,864	598	435	457	437	1,927
Female	702	456	467	389	2,014	712	545	554	443	2,253
Not stated	116	91	93	73	374	103	67	101	64	335
Total	1,461	949	987	855	4,252	1,414	1,046	1,112	944	4,516
Age group:										
Under 12 years	41	22	51	14	128	43	27	59	19	148
12-19 years	42	20	68	16	147	78	26	63	27	194
20-24 years	64	38	48	24	175	59	52	55	24	189
25-34 years	187	135	123	110	554	188	165	172	122	646
35-44 years	255	144	166	142	707	245	174	181	163	763
45-54 years	333	195	199	186	913	322	239	214	213	987
55-64 years	248	183	141	173	745	220	162	156	182	720
65 years and over	174	121	97	116	509	157	134	111	132	534
Not stated	116	91	93	73	374	103	67	101	64	335
Total	1,461	949	987	855	4,252	1,414	1,046	1,112	944	4,516

See footnote(s) at end of statistical tables.

Table 32

Trip Characteristics of Canadian Residents Returning from Countries Other than the United States, by Purpose of Trip, 2000

Trip characteristics	Business, convention and employment	Visiting friends or relatives	Other pleasure, recreation or holiday	Other	Total
Person-trips			'000		
Sex:					
Male	465	309	1,052	101	1,927
Female	230	429	1,466	128	2,253
Not stated	66	65	175	29	335
Total	761	803	2,692	259	4,516
Province of Residence:					
Atlantic Provinces	27	20	103	--	161
Québec	173	101	598	32	904
Ontario	369	413	1,214	127	2,123
Manitoba	24	18	44	9	96
Saskatchewan	14	11	46	4	76
Alberta	71	68	211	29	379
British Columbia, Yukon and Northwest Territories	84	172	475	46	777
Total	761	803	2,692	259	4,516
Area of destination:					
Europe	408	541	801	143	1,893
United Kingdom only	98	201	168	52	519
United Kingdom and Other Europe	63	55	130	14	262
Other Europe	232	274	487	72	1,065
Europe and one other area of destination	16	11	16	5	47
Africa	23	19	35	5	82
Asia	144	124	126	43	438
Central America	6	4	47	5	61
Bermuda and Caribbean	51	46	682	27	806
South America	64	21	52	6	142
Other Areas	50	47	690	25	812
Cruises	11	2	259	3	275
Combined destinations¹	2	--	3	1	7
Total	761	803	2,692	259	4,516
Night group:					
1 night	1	-	4	--	6
2-6 nights	221	25	109	15	370
7-13 nights	343	236	1,398	127	2,104
14-20 nights	98	231	767	60	1,156
21 nights and over	97	312	414	57	879
Total	761	803	2,692	259	4,516
Quarter of re-entry:					
I	150	168	1,027	68	1,414
II	171	211	605	60	1,046
III	227	266	539	80	1,112
IV	213	159	521	51	944
Total	761	803	2,692	259	4,516

See footnote(s) at end of statistical tables.

Table 33

Trip Characteristics of Canadian Residents Returning from Countries Other than the United States, by Province of Residence, 2000

Trip characteristics		Atlantic Provinces	Québec	Ontario	Manitoba	Saskatchewan	Alberta	British Columbia ¹	Canada
Person-trips, one or more nights									
Person-trips	'000	161	904	2,123	96	76	379	777	4,516
Spending	'000,000 \$	213	1,278	2,991	140	113	581	1,182	6,498
Average spending per person-trip	\$	1,320.10	1,413.30	1,408.80	1,469.70	1,486.50	1,533.40	1,521.40	1,438.90
Person-nights	'000	2,203	14,134	31,114	1,690	1,289	6,158	14,921	71,510
Average number of nights		13.7	15.6	14.7	17.7	17.0	16.3	19.2	15.8
Average spending per person-night	\$	96.60	90.40	96.10	83.10	87.30	94.30	79.20	90.90
Area of destination:									
Europe		60	379	979	35	31	135	274	1,893
United Kingdom only		18	39	313	6	11	29	103	519
United Kingdom and Other Europe		11	32	135	4	5	23	51	262
Other Europe		30	299	510	23	15	77	112	1,065
Europe and one other area of destination		1	9	21	2	--	6	8	47
Africa		1	31	28	2	1	5	14	82
Asia		5	50	169	12	6	52	143	438
Central America		1	15	30	1	1	7	7	61
Bermuda and Caribbean		45	229	436	16	10	46	23	806
South America		2	58	58	1	1	15	8	142
Other Areas		33	117	276	25	22	89	249	812
Cruises		13	24	144	3	3	30	57	275
Combined destinations¹		--	--	4	1	--	--	1	7
Total		161	904	2,123	96	76	379	777	4,516
Purpose of trip:									
Business, convention and employment		27	173	369	24	14	71	84	761
Visiting friends or relatives		20	101	413	18	11	68	172	803
Other pleasure, recreation or holiday		103	598	1,214	44	46	211	475	2,692
Other		11	32	127	9	4	29	46	259
Total		161	904	2,123	96	76	379	777	4,516
Sex:									
Male		65	376	909	43	39	168	327	1,927
Female		88	461	1,047	46	32	179	400	2,253
Not stated		8	67	167	7	5	32	49	335
Total		161	904	2,123	96	76	379	777	4,516
Age group:									
Under 12 years		2	30	67	3	1	17	28	148
12-19 years		5	29	109	3	7	13	28	194
20-24 years		4	47	84	6	2	18	28	189
25-34 years		30	158	292	16	10	52	88	646
35-44 years		30	168	327	12	11	73	142	763
45-54 years		38	204	450	26	12	89	169	987
55-64 years		27	124	356	15	16	49	133	720
65 years and over		19	77	272	9	11	36	111	534
Not stated		8	67	167	7	5	32	49	335
Total		161	904	2,123	96	76	379	777	4,516
Quarter of re-entry:									
I		52	297	665	40	29	104	227	1,414
II		49	187	480	17	18	91	204	1,046
III		32	228	561	12	11	88	179	1,112
IV		28	191	418	25	18	96	167	944
Total		161	904	2,123	96	76	379	777	4,516

See footnote(s) at end of statistical tables.

Table 34

Visits, Expenditures and Length of Stay of Canadian Residents¹ in Selected Countries, 2000

Selected countries	Same day			One or more nights				Total		
	Visits		Spending	Visits		Spending	Visit-nights	Visits		Spending
	'000	%	\$'000,000	'000	%	\$'000,000		'000	%	\$'000,000
Europe										
Austria	7	0.6	1.4	88	1.5	65.5	515	95	1.4	66.8
Belgium	24	2.0	1.8	93	1.6	51.9	549	117	1.7	53.7
Denmark	13	1.1	1.0	30	0.5	18.0	194	43	0.6	19.0
France	52	4.2	5.3	442	7.8	560.5	4,455	493	7.2	565.8
Germany	46	3.8	2.1	277	4.9	233.6	2,332	323	4.7	235.7
Greece	20	1.7	3.1	56	1.0	54.4	687	76	1.1	57.5
Ireland (Rep.)	7	0.6	0.7	97	1.7	114.6	1,025	104	1.5	115.3
Italy	43	3.5	5.6	211	3.7	332.1	2,578	254	3.7	337.7
Netherlands	22	1.8	0.9	154	2.7	114.8	1,341	176	2.5	115.6
Portugal	11	0.9	1.1	72	1.3	80.9	1,176	83	1.2	82.0
Spain	30	2.5	3.0	132	2.3	171.6	1,946	161	2.3	174.6
Switzerland	20	1.6	4.0	124	2.2	97.0	916	143	2.1	101.0
United Kingdom	42	3.4	2.4	803	14.1	973.6	9,617	844	12.2	975.9
Yugoslavia	-	-	-	5	0.1	1.8	158	5	0.1	1.8
Other	110	9.1	9.1	329	5.8	300.5	3,615	440	6.4	309.6
Total	445	36.7	41.4	2,912	51.2	3,170.6	31,106	3,357	48.7	3,212.1
Africa	19	1.5	2.5	140	2.5	214.3	2,523	158	2.3	216.8
Asia										
Hong Kong	13	1.1	--	88	1.5	96.5	1,309	101	1.5	97.0
Japan	4	0.3	--	124	2.2	191.5	1,636	128	1.9	191.5
Other	19	1.6	2.2	423	7.4	597.4	8,239	443	6.4	599.0
Total	36	3.0	2.2	635	11.2	885.4	11,184	672	9.7	887.5
Central America	45	3.7	3.7	78	1.4	91.8	1,046	123	1.8	95.5
Bermuda and Caribbean										
Bahamas	59	4.8	4.2	66	1.2	56.4	484	125	1.8	60.6
Barbados	44	3.6	2.7	34	0.6	46.4	341	78	1.1	49.1
Bermuda	6	0.5	1.0	60	1.1	92.3	552	66	1.0	93.3
Cuba	1	0.1	--	273	4.8	210.4	2,366	274	4.0	210.4
Dominican Republic	5	0.4	--	195	3.4	152.3	1,737	200	2.9	152.6
Jamaica	31	2.6	2.4	56	1.0	56.8	515	87	1.3	59.3
Other	377	31.1	37.0	175	3.1	182.5	1,590	552	8.0	219.2
Total	522	43.1	47.2	859	15.1	797.1	7,584	1,382	20.0	844.4
South America	31	2.5	2.7	167	2.9	245.8	2,495	198	2.9	248.5
North America										
Mexico	109	9.0	10.4	731	12.9	715.6	7,451	840	12.2	725.9
Other	1	0.1	--	10	0.2	4.3	20	11	0.2	4.4
Total	110	9.1	10.4	741	13.0	719.9	7,471	851	12.3	730.4
Oceania and Other Ocean Islands	2	0.1	--	148	2.6	284.7	3,753	149	2.2	285.0
Grand - Total	1,212	100.0	110.7	5,682	100.0	6,405.2	67,221	6,895	100.0	6,515.9

See footnote(s) at end of statistical tables.

Footnotes

Table 1

- (1) Subject to revision.

Table 2

- (1) Subject to revision.
- (2) Includes spending in the United States by Canadians en route to and from other countries.
- (3) Includes spending by Canadians on side trips to other countries while visiting the United States.

Table 4

- (1) Subject to revision.
- (2) Includes Luxembourg.

Table 5

- (1) Includes immigrants, former residents, diplomats, military personnel and dependants.

Table 7

- (1) Includes Luxembourg.
- (2) Includes Monaco and Andorra.

Table 8

- (1) Disposable income figures relate to all Canadians and not only those that travel.
- (2) Revalued peso (1993).

Table 9

- (1) Excludes spending and nights in the United States by Canadians en route to and from other countries.
- (2) Excludes spending and nights by Canadians in other countries while visiting the United States.

Table 11

- (1) Other methods include train, boat, pedestrians, cycle (bicycle, motorcycle, etc.).

Table 12

- (1) Other methods include train, boat, pedestrians, cycle (bicycle, motorcycle, etc.).

Table 13

- (1) Other methods include train, boat, pedestrians, cycle (bicycle, motorcycle, etc.).

Table 14

- (1) Includes Yukon, Northwest Territories and Nunavut.
- (2) Other methods include train, boat, pedestrians, cycle (bicycle, motorcycle, etc.).

Table 15

- (1) Includes Luxembourg.
- (2) Includes Monaco and Andorra.

Table 16

- (1) Includes Luxembourg.
- (2) Includes Monaco and Andorra.

Table 17

- (1) Includes Monaco and Andorra.
- (2) Denmark, Norway and Sweden.

Table 18

- (1) Includes Monaco and Andorra.
- (2) Denmark, Norway and Sweden.

Table 19

- (1) Includes Monaco and Andorra.
- (2) Denmark, Norway and Sweden.

Table 20

- (1) Includes Yukon, Northwest Territories and Nunavut.
- (2) Includes Monaco and Andorra.
- (3) Denmark, Norway and Sweden.

Table 21

- (1) Other methods include train, boat, pedestrians, cycle (bicycle, motorcycle, etc.).

Table 22

- (1) Other methods include train, boat, pedestrians, cycle (bicycle, motorcycle, etc.).
- (2) Persons stating three or more regions visited.

Table 23

- (1) Excludes spending and nights in the United States by Canadians en route to and from other countries.
- (2) Other methods include train, boat, pedestrians, cycle (bicycle, motorcycle, etc.).
- (3) Persons stating three or more regions visited.

Table 24

- (1) Persons stating three or more regions visited.

Footnotes – Concluded

Table 25

- (1) Persons stating three or more regions visited.

Table 26

- (1) Persons stating three or more regions visited.

Table 27

- (1) Includes Yukon, Northwest Territories and Nunavut.
- (2) Persons stating three or more regions visited.

Table 28

- (1) Includes Canadian residents travelling in the United States while en route to and from other countries.
- (2) Excludes travellers leaving and returning to Canada by automobile on the same day.

Note: A Canadian may visit several states during a trip to the United States; each visit is recorded along with the spending and nights; the number of visits therefore will be greater than the number of person-trips.

Table 29

- (1) Includes St.Pierre et Miquelon, Mexico and Oceania. (including Australia).
- (2) Three or more areas of destination.

Table 30

- (1) Includes nights travelling to destination.
- (2) Excludes spending and nights by Canadians in other countries while visiting the United States.
- (3) Includes St.Pierre et Miquelon, Mexico and Oceania. (including Australia).
- (4) Three or more areas of destination.

Table 31

- (1) Includes St.Pierre et Miquelon, Mexico and Oceania. (including Australia).
- (2) Three or more areas of destination.

Table 32

- (1) Includes St.Pierre et Miquelon, Mexico and Oceania. (including Australia).
- (2) Three or more areas of destination.

Table 33

- (1) Includes Yukon, Northwest Territories and Nunavut.
- (2) Includes nights travelling to destination.
- (3) Includes St.Pierre et Miquelon, Mexico and Oceania. (including Australia).
- (4) Three or more areas of destination.

Table 34

- (1) Includes Canadians on side trips to other countries while visiting the United States.

Note: A Canadian may visit several countries during a trip overseas; each visit is recorded along with the spending and nights; the number of visits therefore will be greater than the number of person-trips.

Appendix

International Travel Statistics Background

Statistical series on travel between Canada and other countries originated in the early 1920s primarily as a requirement for the Canadian Balance of International Payments.

The method of collection relied heavily on the detailed administrative records of Canada Customs and Revenue Agency and Immigration authorities to obtain the number of border crossings and on the officers from these departments to distribute questionnaires to individual travellers.

The accuracy of these methods depended on (1) the completeness of the records of traveller movements and (2) the representativeness of the sample expenditures derived for each category of traveller.

The statistical processes continued to rely on the administrative records of co-operating departments until 1972. Several changes in the methods of documenting visitors and residents, resultant from policy revisions by Customs and Immigration, have led in the past to changes in definitions and breaks in statistical continuity. The purpose of the change in 1972 was to standardize definitions, methods and requirements for the collection of traveller counts, in light of the movement toward facilitation of traffic flows, and as a means of more adequately controlling the results. A detailed description of methods is presented in the "Description of Methods" section.

The original purpose of the questionnaire surveys was to collect expenditure data only, to be applied to the traveller movements, to derive aggregate expenditures on visitors and returning residents. The first questionnaires were short and contained only three or four questions. Response was large and consistent.

As travel gained in size and importance to the Canadian economy, the tourism industry voiced the need for more detailed characteristics on the traveller for market research and industry planning. The questionnaires were gradually expanded to include as many as 19 questions including purpose of trip, origin and destination, type of accommodation, etc., with distribution of the most recently redesigned questionnaires beginning in 1990.

Prior to 1990, questionnaires for United States travellers visiting Canada were distributed to American residents on returning to their country by United States Customs officials. The questionnaires were processed by the United

States Department of Commerce and the results were sent to Statistics Canada. Questionnaires are now distributed to residents of the United States upon entering Canada during sampling periods by Canada Customs and Revenue Agency officials. Completed questionnaires are mailed to Statistics Canada for processing.

Other modifications to the system of data collection in the field have been introduced progressively since 1976. An outline of the procedures in current use is given in "Description of Methods" under "Questionnaire Surveys". These procedures are monitored and reviewed on an annual basis in an attempt to improve the accuracy of the existing system and to collect further required data for the industry within financial resource limits.

The basic purpose of the questionnaire surveys (the estimation of total spending at the Canada level) continues to be met with reasonable levels of reliability. Estimations of expenditures and other characteristics at lower levels of aggregation, such as regional/provincial data and detailed cross-classifications, strain the capacity of the survey and the resultant estimates are less reliable, as discussed in the "Estimation Method and Reliability Indicators" section.

The actual implementation of the specified methods may be subject to two types of bias: (1) a distribution bias, that is, the questionnaires may not be handed to a random selection of travellers and (2) a non-response bias, that is, returns may not be representative of the travelling public. Although about 44,642 questionnaires were received from non-resident parties entering Canada and 48,200 for returning residents in 2000, these numbers represent less than 1% of the total traffic.

Under the present operational conditions, the size of these samples is adequate to permit quarterly estimation of expenditures at the national level, and annual estimates for certain provinces, provided that the assumption of negligible bias is not seriously violated. However, some data for lower levels of aggregation and cross-tabulations are not sufficiently reliable to be published on a regular basis.

Travel and the Balance of Payments

Expenditures by non-residents visiting Canada (receipts) and spending by Canadian residents returning from trips abroad (payments) are incorporated in the travel account which is an integral part of the current account of the Canadian Balance of International Payments. In 2000, travel receipts, included as part of non-merchandise

transactions or “invisible exports”, accounted for about 3.0% of all current receipts while travel payments, included as “invisible imports”, represented approximately 3.6% of all current payments.

In the context of Balance of Payments for Canada, receipts on travel account are defined to include all expenses incidental to travel in Canada by non-residents. Among these are expenditures in Canada for lodging, food, entertainment, local transportation and all other purchases by travellers of goods and services (including gifts). The series thus includes any purchases of personal goods to be exported by travellers.

Payments on travel account are correspondingly defined to include all expenses incidental to travel abroad by residents of Canada. Among these are expenditures abroad for lodging, food, entertainment, local transportation and all other purchases by travellers of goods and services (including gifts). The series thus includes any purchases of personal goods to be imported for personal use by travellers.

The travel account does not conform precisely to the concepts recommended by the International Monetary Fund (IMF). Under those concepts the following items which are included in the Canadian series for international travel should be shown in other balance of payments accounts:

Receipts or payments:	IMF Concept
Personal expenditures of foreign migrant workers or Canadian migrant workers; including temporary and seasonal workers and commuters.	Other services

Description of Methods

The existing methods of collecting international travel statistics are described under two headings “Frontier Counts” and “Questionnaire Surveys”. Both these systems depend greatly on the co-operation of Canada Customs and Revenue Agency in the collection of the number of crossings and the distribution of travel questionnaires.

Frontier Counts

All ports of entry across Canada participate in determining the number of travellers by selected categories, by type of transportation, as well as the number of cars, trucks, motorcycles, snowmobiles and bicycles in the case of highway and ferry points. These surveys are conducted on a census basis.

The forms used by Customs officials in the enumeration process are described as follows:

E-62 Entry Tally (Form 1). Form used to record the number of daily travellers and vehicles arriving by land and by ferry, at points of entry on the United States-Canada border. Each form indicates the number of automobiles, trucks, motorcycles, bicycles, snowmobiles and their associated travellers cleared for entry by Canada Customs and Revenue Agency, as well as the travellers coming in to Canada by other modes of transport such as bus, train, and on foot. In 1998, the Primary Automated Lookout System (PALS) was introduced at a few test ports to replace the manual E-62 tally. Presently, 32 ports across Canada, which account for over 85% of all international automobile traffic, utilize this automated system.

E-63 Commercial and Private Craft/Passenger and Crew Arrivals (Form 2). Form used to record travellers entering Canada by private plane or boat. This form is also used to record travellers and crews on commercial freighters, passenger ferries, cruises and some commercial air flights. The CANPASS telephone reporting system also records the number of travellers entering Canada by private plane/boat.

E311 Referral Card (Form 3). Form used to record on a census basis travellers entering Canada by commercial plane, including schedule and charter arrivals, at the major international airports. The family *Customs Declaration Card* was introduced in April 1999. The purpose of this card was to facilitate the clearing of international travellers at the point of entry. Up to five family members living at the same address are allowed on the same card compared to one person per card on the old individual E-311 card. In order to estimate the number of travellers recorded on the family Customs Declaration Cards, sampling is carried out for returning residents from the U.S., returning residents from overseas as well as U.S. residents entering Canada. The sampling fraction at large airports is 10%, 25% at medium airports and 100% at small airports. Crew and overseas residents, military, immigrants, and former residents continue to be a census count.

Detailed instructions are provided to aid Customs officials in the task of collecting data on these documents. A continual liaison function is performed by the International Travel Section with the supplying department to review, discuss and resolve inconsistencies in the reported figures. A monitoring system has been established to compare incoming data with information available from independent sources, such as airport management reports, toll figures, provincial road counters, etc. The above, as well as reference to weather reports, special events and direct contact with port authorities, permits the verification and explanation of irregular fluctuations in reported figures.

The completed forms are submitted continuously to Statistics Canada for processing, analysis and publication. In 2000, the number of documents processed was estimated as follows: 193,600-E-62; 388,900-E-63; and 14,878,000-E311.

Monthly statistics are released from the frontier counts in two publications:

Statistics Canada Daily, Catalogue no. 11-001-XPE. Publishes preliminary international travel statistics as soon as they become available - usually six weeks after the reference month. This release covers the four travelling populations, at the national level: United States residents visiting Canada, overseas residents visiting Canada, Canadian residents returning from the United States and Canadian residents returning from other countries.

International Travel. Advance Information, Catalogue no. 66-001-PIB. A monthly four-page document listing the preliminary figures in more detail is usually available six weeks after the reference month. Page one breaks down the visitor traffic and re-entries by Canadian residents by mode of transport and length of stay. Page two outlines a selected list of categories of foreign overnight travellers to Canada by province of entry. Page three gives a detailed list of Canada's major overseas travel markets and page four provides a breakdown of Canadian overnight travellers returning by province of re-entry from both the United States and all other countries.

Questionnaire Surveys

Continuous questionnaire surveys are used to secure information on the expenditures and other characteristics of the international traveller. The questionnaires are handed out to the travel party on entry (non-residents) or re-entry (residents of Canada) by Canada Customs and Revenue Agency officials according to pre-arranged schedules.

In the past, as part of a continuing attempt to improve travel surveys at minimal cost, a stint sampling scheme, described below, was developed. After a number of trials in 1976 at selected land ports, the stint sampling scheme was introduced in 1977 at all major land ports for Canadian residents returning from the United States after a stay of one or more nights. In 1978, the stint approach was introduced on a trial basis at a number of airports to improve distribution and survey response. The trials proved to be successful, so, in 1979, the ten major international airports were added to the stint system for surveys of Canadians returning from international trips and visitors from countries other than the United States. Also in 1979, the stint approach was introduced at the land ports to distribute the same-day questionnaires. Therefore, from 1979, all international travel surveys operated by the International Travel Section used the stint distribution system at all border ports sampled.

A stint consists of a selected period of several days during which questionnaires are to be distributed to eligible

travellers. Each port involved in this scheme receives, for each of its stints, a specific quantity of numbered questionnaires and a date on which to start the distribution. On the start date, the officers hand out the questionnaires on a continuous basis to the appropriate travelling population until they have all been distributed. The Liaison staff of the International Travel Section call each port the day before the stint is to start to make sure that the questionnaires have arrived and to remind the officers to start the distribution the next day. In this way, the response rate of each stint, the coverage rate of the traffic and the length of the stint can all be used as a measure of performance for each stint. Statistics Canada Liaison officers conduct visits to the ports of entry.

Five questionnaires are used in the collection process and are subjected to a complex edit system at Statistics Canada. Only those questionnaires acceptable to the edit system are subsequently used in estimation.

Questionnaire (8-2200-356) for United States travellers visiting Canada. Distributed by Canada Customs and Revenue Agency officials during sampling periods to travellers residing in the United States at most land, air and some sea ports, completed by the travellers and returned to Statistics Canada for processing.

Questionnaire (8-2200-337) for residents of countries other than the United States visiting Canada. Distributed by Canada Customs and Revenue Agency officials during sampling periods to travellers residing in overseas countries at most land, air and some sea ports, completed by the travellers and returned to Statistics Canada for processing.

Questionnaire (8-2200-336) for Canadian residents returning from trips outside Canada. Distributed by Canada Customs and Revenue Agency officials during sampling periods to residents re-entering Canada, completed by the traveller and mailed to Statistics Canada for processing. This questionnaire is used for Canadian residents returning from the United States or other countries.

Questionnaire (8-2200-338) for Canadian residents leaving and returning to Canada by auto on the same day (a visit of less than 24 hours). The cards are distributed to the drivers of Canadian vehicles by Canada Customs and Revenue Agency officials, completed and mailed to Statistics Canada for processing. Since the same-day traffic is considered to be fairly homogeneous, a less frequent sample is taken than for the longer-term traffic.

Questionnaire (8-2200-345) for United States residents visiting Canada by auto on the same day (a visit of less than 24 hours). The cards are distributed to the drivers of United States vehicles by Canada Customs and Revenue Agency officials, completed and mailed to Statistics Canada for processing. Since the same-day traffic is considered to be fairly homogeneous, a less frequent sample is taken than for the longer-term traffic.

Questionnaire Distribution

Conducting a survey that would reach all international travellers in the target population would incur exorbitant costs. In order to make the surveys more affordable and manageable, a subset of international travellers from the target population was selected by directing the surveys to international travellers who use popular modes of transportation to enter Canada and who enter through ports with a significant amount of traveller traffic. This subset of travellers constitutes the survey population for the questionnaire surveys.

Therefore, the questionnaires are actively distributed to travellers who enter Canada by one of the following modes of transportation: automobile, commercial plane, commercial bus or commercial boat (Vancouver Seaport only). Nearly 98% of all international travellers enter Canada using any one of these modes of transportation. Questionnaires are distributed at 150 ports. These questionnaire survey ports constitute about 44% of all Canadian ports but account for nearly 100% of all international travellers who enter Canada.

While the survey population is not identical to the target population, it encompasses most of the target population. As part of the design of the questionnaire surveys, travellers who do not travel through one of the questionnaire survey ports or enter Canada by train, private plane, private boat or other modes of transportation (e.g. motorcycle, bicycle, foot, etc.) are not given questionnaires. However, their characteristics are estimated using imputed questionnaires and are combined with the sample from the survey population. In 2000, these imputed questionnaires accounted for only 2.8% of all U.S. travellers to Canada and 1.8% of Canadians travelling outside Canada. Imputation of questionnaires is required only for Canadian and U.S. travellers (*additional information on imputation procedures is available upon request*).

Estimation Method and Reliability Indicators

For estimation purposes, the responses obtained through the questionnaire surveys must be treated as a simple random sample from the total traffic in each stratum (port or group of ports, by type of traffic, by quarter). The data may in fact be subject to some degree of "distribution bias", due to the fact that not all categories of travellers are represented in the handout, or to a "non-response bias" due to the fact that the individuals replying may not be representative of the population.

The number of questionnaires returned may be adequate if the above restrictions could be evaluated. In 1990, such an evaluation was done. Results from this study on selected Québec and Ontario ports can be obtained from the International Travel Section of Statistics Canada. Weighting techniques used in the estimation process attempt to reduce the effect of biases. Response is

disaggregated by known characteristics into homogeneous groups, referred to as Port Factor Groups. For example, three main groups are United States automobiles entering and leaving same day, those staying one night and those staying two or more nights. Further, the port or area of entry is established for each group to take into account geographical distribution prior to the application of weights. In one quarter, 608 individual weights are applied in the estimation of expenditures and trip characteristics of international travellers.

The formula for the estimation of travel characteristics of United States residents to Canada, as an example, may be summarized as follows:

$$\hat{X} = \sum_{c=1}^L \sum_{i=1}^{m_c} \sum_{j=1}^{s_{ci}} \frac{N_{ci}}{n_{ci}} \cdot x_{cij}, \text{ where}$$

\hat{X} = estimate of characteristic X (e.g., expenditures, nights, etc.);
 c = category of traveller (e.g., auto same day, auto one night, etc.);
 L = number of categories;
 i = port or area of entry;
 m_c = number of ports or areas of entry which recorded travellers of category c ;
 j = unit identification within sub-sample;
 s_{ci} = total count of units within sub-sample for given c and i ;
 N_{ci} = total volume of travellers for given c and i , according to Canada Customs and Revenue Agency;
 n_{ci} = sample count of travellers for given c and i .
 x_{cij} = observation on characteristic (e.g., expenditures, nights, etc.).

In sample surveys, since inference is made about the entire population covered by the survey on the basis of data obtained from only a part (sample) of the population, the results are likely to be different from the "true" population values. The true population values in this context refer to the values that would have been obtained when the entire population was enumerated under the same general survey conditions. The error arising due to drawing inferences about the population on the basis of information from the sample is termed sampling error.

The sampling error, in addition to the size of the sample, depends on factors such as variability in the population, sampling design and method of estimation. For example, the sampling error depends on the stratification procedure employed, allocation of the sample, choice of sampling units and method of selection employed.

The estimation procedure employed plays an important role. The accuracy and precision depend on the particular estimate used. Additionally, even if the sample design, the size of the sample, and the estimation procedure were

the same, different characteristics (on which data have been collected from the sample) would possess different sampling errors, due to the fact that they have different degrees of variability in the population. For instance, the sampling error for expenditure estimates would be different from the sampling error for length of stay, both estimates being based on the same sample. Each of the possible samples would yield somewhat different sets of results. The sampling errors are measures of the variation of all the possible sample estimates around the true values.

The expected value of a variable is the average of the variable taken over all possible samples weighted by the probability of drawing the sample. The difference between the expected value of an estimate and the corresponding true value is called the bias of the estimate. The mean square error of an estimate is defined as the expected value of the square of the deviation of the estimate from the true value. The variance of an estimate is defined as the expected value of the square of the deviation of the estimate from its expected value. Thus, when an estimate is unbiased (i.e., its bias is zero), its variance and mean square error are equal.

The accuracy of estimates from sample surveys is affected by both variance and bias. Under the assumption of simple random sampling within each stratum and with the further assumption of absence of bias, the variance of an

estimated characteristic value is a good indicator of its reliability. Since the true variance of the estimate depends, like the estimate itself, on the whole population, it must be estimated from the available sample.

A notable feature of probability sampling is that the quality of the estimates may be estimated from the sample itself. The estimated coefficient of variation is defined as the ratio of the square root of the estimated variance to the estimate itself. Guides to the potential size of sampling errors are provided by the estimated coefficients of variation. The quality of the estimate increases as the corresponding coefficient of variation decreases.

The estimated coefficients of variation in this publication are presented in the form of lettered symbols. The lettered symbols refer to ranges of percentage estimated coefficients of variation that are applicable to the estimates. These symbols are as follows: A(0.0%-0.5%), B(0.6%-1.0%), C(1.1%-2.5%), D(2.6%-5.0%), E(5.1%-10.0%), F(10.1%-16.5%), G(16.6%-25.0%), H(25.1%-33.3%), J(33.4% and over). Only data with coefficients of variation in categories A to F are generally released without restrictions. See Table I at the end of the appendix as a guide to the estimated coefficients of variation for the figures in this report. Additional information on specific coefficients of variation maybe obtained from the International Travel Section of Statistics Canada.

Table 1
Estimated Coefficients of Variation, 2000

2000	Person-nights		Province-visits		Expenditures	
	Estimate	Coefficients of Variation	Estimate	Coefficients of Variation	Estimate	Coefficients of Variation
	000s	%	000s	%	\$000s	%
CANADA						
United States Residents						
Sameday	-	-	29,918	0.2	1,800,096	2.9
One more nights	58,649	0.9	16,627	0.4	7,448,282	1.1
TOTAL	58,649	0.9	46,545	0.1	9,248,379	1.0
Overseas Residents						
Same Day	-	-	826	2.9	10,222	9.6
One more nights	49,167	1.5	5,959	0.7	5,188,171	1.3
TOTAL	49,167	1.5	6,785	0.7	5,198,393	1.3
Canadian Residents						
Returning from the United States						
Same Day	-	-	28,019	0.1	1,088,676	5.0
One more nights	103,024	1.4	14,648	0.1	8,975,151	1.0
TOTAL	103,024	1.4	42,666	0.0	10,063,827	1.1
Canadian Residents						
Returning from Other Countries						
TOTAL	71,510	1.7	4,516	0.0	6,497,612	1.5
NEWFOUNDLAND						
United States Residents						
Same Day	-	-	17	2.2	355	0.0
One more nights	326	12.9	50	10.9	55,793	24.2
TOTAL	326	12.9	66	8.2	56,148	24.1
Overseas Residents						
Same Day	-	-	1	55.4	0	0.0
One more nights	963	16.2	92	8.7	99,379	12.5
TOTAL	963	16.2	93	8.6	99,379	12.5
Canadian Residents						
Returning from the United States						
Same Day	-	-	2	62.0	46	80.1
One more nights	586	15.7	46	14.4	56,247	16.5
TOTAL	586	15.7	48	14.1	56,293	16.5
Canadian Residents						
Returning from Other Countries						
TOTAL	424	18.5	37	14.9	42,858	16.9

Table 1

Estimated Coefficients of Variation, 2000 - Continued

2000	Person-nights		Province-visits		Expenditures	
	Estimate	Coefficients of Variation	Estimate	Coefficients of Variation	Estimate	Coefficients of Variation
	000s	%	000s	%	\$000s	%
PRINCE EDWARD ISLAND						
United States Residents						
Same Day	-	-	10	23.2	3	0.0
One more nights	613	7.2	183	5.3	66,108	8.5
TOTAL	613	7.2	193	5.1	66,111	8.5
Overseas Residents						
Same Day	-	-	7	40.2	0	0.0
One more nights	210	17.2	56	13.3	25,183	18.6
TOTAL	210	17.2	63	12.6	25,183	18.6
Canadian Residents						
Returning from the United States						
Same Day	-	-	10	42.9	92	90.4
One more nights	247	25.8	20	20.0	21,545	30.5
TOTAL	247	25.8	30	19.5	21,637	30.4
Canadian Residents						
Returning from Other Countries						
TOTAL	182	47.4	12	29.3	16,163	35.4
NOVA SCOTIA						
United States Residents						
Same Day	-	-	34	8.2	124	8.7
One more nights	2,145	3.8	470	2.4	244,852	5.2
TOTAL	2,145	3.8	504	2.2	244,976	5.1
Overseas Residents						
Same Day	-	-	36	16.5	83	67.1
One more nights	1,872	8.3	196	6.3	166,219	8.2
TOTAL	1,872	8.3	232	5.9	166,302	8.2
Canadian Residents						
Returning from the United States						
Same Day	-	-	34	20.8	1,043	46.2
One more nights	2,154	7.8	226	4.8	188,352	7.5
TOTAL	2,154	7.8	260	5.0	189,394	7.5
Canadian Residents						
Returning from Other Countries						
TOTAL	1,173	14.5	77	7.6	101,653	10.5

Table 1

Estimated Coefficients of Variation, 2000 - Continued

2000	Person-nights		Province-visits		Expenditures	
	Estimate	Coefficients of Variation	Estimate	Coefficients of Variation	Estimate	Coefficients of Variation
	000s	%	000s	%	\$000s	%
NEW BRUNSWICK						
United States Residents						
Same Day	-	-	1,872	0.5	88,720	8.5
One more nights	1,283	3.8	451	2.2	113,412	5.8
TOTAL	1,283	3.8	2,323	0.5	202,132	5.0
Overseas Residents						
Same Day	-	-	30	17.7	128	51.2
One more nights	522	19.2	90	9.7	46,041	15.3
TOTAL	522	19.2	120	8.5	46,169	15.3
Canadian Residents						
Returning from the United States						
Same Day	-	-	3,845	0.4	124,551	15.3
One more nights	1,634	9.0	238	4.2	138,661	9.3
TOTAL	1,634	9.0	4,084	0.5	263,212	8.7
Canadian Residents						
Returning from Other Countries						
TOTAL	424	16.8	35	13.7	52,205	19.2
QUÉBEC						
United States Residents						
Same Day	-	-	1,740	1.1	106,726	8.8
One more nights	7,866	2.4	2,256	1.1	1,147,326	2.6
TOTAL	7,866	2.4	3,996	0.7	1,254,052	2.5
Overseas Residents						
Same Day	-	-	161	7.2	1,831	40.2
One more nights	8,758	3.3	1,082	2.3	917,203	3.5
TOTAL	8,758	3.3	1,243	2.1	919,034	3.5
Canadian Residents						
Returning from the United States						
Same Day	-	-	2,865	0.9	97,021	14.7
One more nights	19,097	4.5	2,626	1.0	1,487,823	3.7
TOTAL	19,097	4.5	5,491	0.7	1,584,844	3.5
Canadian Residents						
Returning from Other Countries						
TOTAL	14,134	4.1	904	1.6	1,277,695	3.6

Table 1
Estimated Coefficients of Variation, 2000 - Continued

2000	Person-nights		Province-visits		Expenditures	
	Estimate	Coefficients of Variation	Estimate	Coefficients of Variation	Estimate	Coefficients of Variation
	000s	%	000s	%	\$000s	%
ONTARIO						
United States Residents						
Same Day	-	-	21,777	0.1	1,423,869	3.5
One more nights	25,167	1.6	7,593	0.4	2,904,283	1.4
TOTAL	25,167	1.6	29,370	0.1	4,328,151	1.5
Overseas Residents						
Same Day	-	-	325	4.4	5,073	12.8
One more nights	18,162	3.0	1,986	1.6	1,643,042	2.5
TOTAL	18,162	3.0	2,310	1.4	1,648,115	2.5
Canadian Residents						
Returning from the United States						
Same Day	-	-	14,465	0.2	611,955	7.4
One more nights	49,969	2.1	7,047	0.5	4,403,149	1.6
TOTAL	49,969	2.1	21,513	0.2	5,015,104	1.6
Canadian Residents						
Returning from Other Countries						
TOTAL	31,114	3.0	2,123	1.0	2,991,324	2.4
MANITOBA						
United States Residents						
Same Day	-	-	421	1.5	22,416	11.9
One more nights	1,227	4.1	330	2.4	171,983	6.6
TOTAL	1,227	4.1	751	1.1	194,398	6.0
Overseas Residents						
Same Day	-	-	7	31.9	41	102.8
One more nights	787	13.1	96	8.9	70,486	14.1
TOTAL	787	13.1	103	8.6	70,526	14.1
Canadian Residents						
Returning from the United States						
Same Day	-	-	713	2.2	32,955	28.4
One more nights	3,524	5.7	552	2.0	292,662	4.1
TOTAL	3,524	5.7	1,264	1.5	325,616	4.7
Canadian Residents						
Returning from Other Countries						
TOTAL	1,690	14.8	95	8.5	140,352	11.2

Table 1

Estimated Coefficients of Variation, 2000 - Concluded

2000	Person-nights		Province-visits		Expenditures	
	Estimate	Coefficients of Variation	Estimate	Coefficients of Variation	Estimate	Coefficients of Variation
	000s	%	000s	%	\$000s	%
SASKATCHEWAN						
United States Residents						
Same Day	-	-	125	6.0	3,142	23.2
One more nights	853	7.1	218	5.3	112,580	14.0
TOTAL	853	7.1	343	3.9	115,722	13.6
Overseas Residents						
Same Day	-	-	4	34.1	1	90.7
One more nights	511	17.2	65	11.3	34,525	17.0
TOTAL	511	17.2	69	10.8	34,526	17.0
Canadian Residents						
Returning from the United States						
Same Day	-	-	184	5.4	12,464	28.7
One more nights	1,910	6.2	258	3.8	168,061	6.1
TOTAL	1,910	6.2	442	3.2	180,525	6.0
Canadian Residents						
Returning from Other Countries						
TOTAL	1,289	13.2	76	10.0	112,472	12.5
ALBERTA						
United States Residents						
Same Day	-	-	213	4.6	8,114	17.3
One more nights	4,739	3.1	1,073	2.3	724,322	4.3
TOTAL	4,739	3.1	1,287	1.9	732,436	4.2
Overseas Residents						
Same Day	-	-	44	14.7	624	41.5
One more nights	6,129	4.4	834	3.1	729,573	5.1
TOTAL	6,129	4.4	878	3.1	730,197	5.1
Canadian Residents						
Returning from the United States						
Same Day	-	-	225	6.4	7,603	18.7
One more nights	9,330	3.4	1,178	1.9	917,626	3.0
TOTAL	9,330	3.4	1,403	1.9	925,230	3.0
Canadian Residents						
Returning from Other Countries						
TOTAL	6,158	5.8	379	3.8	580,909	6.5

Table 1

Estimated Coefficients of Variation, 2000 - Concluded

2000	Person-nights		Province-visits		Expenditures	
	Estimate	Coefficients of Variation	Estimate	Coefficients of Variation	Estimate	Coefficients of Variation
	000s	%	000s	%	\$000s	%
BRITISH COLUMBIA						
United States Residents						
Same Day	-	-	3,607	0.8	142,196	4.5
One more nights	13,627	1.9	3,719	0.9	1,802,011	2.6
TOTAL	13,627	1.9	7,326	0.2	1,944,207	2.5
Overseas Residents						
Same Day	-	-	182	7.3	2,023	13.9
One more nights	10,978	3.7	1,378	2.0	1,417,149	3.2
TOTAL	10,978	3.7	1,560	1.8	1,419,171	3.2
Canadian Residents						
Returning from the United States						
Same Day	-	-	5,667	0.3	200,853	8.6
One more nights	14,400	2.9	2,431	1.0	1,283,152	2.8
TOTAL	14,400	2.9	8,098	0.3	1,484,005	2.7
Canadian Residents						
Returning from Other Countries						
TOTAL	14,696	4.3	768	2.1	1,163,301	4.8
YUKON						
United States Residents						
Same Day	-	-	103	6.9	4,432	12.1
One more nights	699	10.4	255	4.0	66,670	7.2
TOTAL	699	10.4	358	2.9	71,103	6.8
Overseas Residents						
Same Day	-	-	30	15.2	419	27.6
One more nights	234	10.6	72	8.3	31,675	13.2
TOTAL	234	10.6	102	7.3	32,094	13.1
Canadian Residents						
Returning from the United States						
Same Day	-	-	7	28.3	63	33.5
One more nights	134	31.6	19	16.7	10,221	33.3
TOTAL	134	31.6	26	14.4	10,284	33.1
Canadian Residents						
Returning from Other Countries						
TOTAL	199	54.4	7	56.1	16,226	61.1
NORTHWEST TERRITORIES						
United States Residents						
Same Day	-	-	1	100.3	0	0.0
One more nights	103	23.0	28	25.9	38,943	33.2
TOTAL	103	23.0	29	25.3	38,943	33.2
Overseas Residents						
Same Day	-	-	0	0.0	0	0.0
One more nights	41	28.1	11	29.9	7,696	34.0
TOTAL	41	28.1	11	29.9	7,696	34.0
Canadian Residents						
Returning from the United States						
Same Day	-	-	2	70.6	31	100.1
One more nights	39	44.3	6	31.8	7,652	43.0
TOTAL	39	44.3	8	29.9	7,683	42.9
Canadian Residents						
Returning from Other Countries						
TOTAL	25	56.5	2	53.2	2,456	55.4

Definition of Terms

The definitions of terms described in this section relate to the statistics of international travel by Canada and although close they do not necessarily coincide precisely with definitions developed internationally or elsewhere nationally. The definitions are restricted by the nature of the survey and the physical limitations of the collection process at border points. The frontier counts and the questionnaire distribution are conducted at points of entry by Canada Customs and Revenue Agency applying to Canadian residents on returning to Canada and non-residents on entering Canada.

International Traveller

The term international traveller applies to all persons arriving in Canada who are cleared through Canada Customs and Revenue Agency, points of entry. Any person may cross into Canada more than once in the same period. The method of collection counts each crossing made. The numbers, therefore, represent numbers of crossings (entries or re-entries), not individual travellers. The term international traveller is divided into three groups: non-resident traveller, resident traveller and other traveller.

Non-resident Traveller

A non-resident traveller is an international traveller resident of a country other than Canada who passes through Canada Customs on a visit for a period of less than 12 months. Canadian citizens residing in other countries coming home on leave are included. This category comprises persons entering Canada for the following reasons:

- business, commuting to work, seasonal or temporary employment;
- attending a convention, conference or seminar;
- study, summer resident,
- visiting friends or relatives;
- pleasure, holiday, vacation, health and shopping; and
- persons travelling in transit who clear Canada Customs.

Resident Traveller

A resident traveller is an international traveller resident of Canada who has travelled outside of Canada for a period of less than 12 months for the same reasons as given above and who is returning to Canada through Canada Customs. Foreign citizens, who are residing in Canada, travelling abroad on leave or for other reasons are included.

Other Travellers

Other travellers include the following types of international travellers:

Immigrants. Citizens of other countries entering Canada to take up permanent residence for more than one year.

Former residents. Canadian citizens returning to Canada to re-establish permanent residence after residing outside Canada for more than one year.

Military personnel, diplomats and dependents. Canadian citizens and dependents who have been stationed abroad for more than one year and who are returning from postings. Foreign citizens and dependents entering Canada on a military or diplomatic posting.

Crews. Persons engaged in the operation of a transport; air, sea, truck crews, etc.

Land

Travel by land includes automobile, bus and rail traffic as well as "other methods" described below. Included is traffic entering on car ferries.

Automobile. Motorized highway passenger car having a designated seating capacity of 10 or less used for non-commercial purposes, including motor homes (single unit motorized vehicles designed for camping), truck campers (shells attached to a truck to convert it into a vehicle that can be used for camping) and buses for private use. Taxis are also included. Vehicles on car ferries that meet this definition are also considered as automobile traffic.

Bus. Motorized highway vehicle used for carrying passengers for commercial purposes (to lease as a charter or on a seat basis). This category also includes vehicles used to transport students or employees of a company.

Air

Commercial and charter services and private plane.

Other Methods include:

Train, boat, pedestrian, cycle (bicycle, motorcycle), etc.

Private Craft

Persons travelling in owned or rented planes or boats whereby a fare has not been charged for an individual seat. Plane owned or rented by companies to transport employees to business meetings are included.

Direct to Canada

Non-residents entering or Canadian residents returning from countries other than the United States directly to Canada. It should be noted that statistics are not provided on this basis for travellers leaving Canada.

Via the United States

Non-residents entering or Canadians returning from countries other than the United States through or by way of the United States. The length of stay in the United States has no bearing on the classification, a person could be in transit through the United States or could have stayed several days. Three examples follow: a non-resident visiting the United States who during his visit enters Canada would be counted as entering via the United States; a non-resident entering direct to Canada who visits the United States during his trip would be counted direct on his first entry and via the United States on his second entry; and, a returning resident vacationing in the southern United States who travels to the Caribbean or other countries during his trip would be classified as returning via the United States. This latter group is difficult to identify at the border point and may be categorized as returning from the United States only.

Person-trip

Each time a non-resident traveller enters Canada marks the beginning of a person-trip. The traveller's entry is recorded by Canada Customs. The person-trip concludes when the traveller leaves Canada. For residents, each time a person departs from Canada, a person-trip begins. The person-trip ends when the traveller returns to Canada. His/her re-entry is recorded by Canada Customs.

Person-night

Each night a non-resident traveller spends in Canada, or a resident traveller spends outside Canada, during a person-trip is considered a person-night.

Visit

A non-resident traveller may stay in several locations on one trip to Canada; each stay represents a visit. **A resident traveller** may cross into several countries or states before being recorded as having re-entered Canada; each of these crossings represents a visit. Estimates of visits are derived from sample questionnaire surveys.

Same-day

Same-day travel encompasses travellers who enter and leave a country in less than 24 hours. This category includes persons resident in one country and commuting daily to and from work in another country.

One or More Nights

Travel of one or more nights includes travellers staying at least 24 hours in a country other than that in which he resides. This classification closely approximates the term "tourist" although including temporary and seasonal workers, students, and in transit travellers.

Travel Receipts

Travel receipts are the expenditures in Canada by non-resident travellers (including foreign crews) incidental to travel. Among these would be expenditures for lodging, food, entertainment, local transportation, gifts, medical care, student expenses and all other purchases of personal goods and services.

Travel Payments

Travel payments are the expenditures abroad by Canadian resident travellers (including crews) incidental to travel including purchases of goods to be imported for personal use by travellers. Among these would be expenditures abroad for lodging, food, entertainment, local transportation, gifts, medical care, student expenses and all other purchases of personal goods and services.

Origin or Residence

The origin or residence is the place of last permanent residence normally summarized by census region for United States residents, by country for other residents and by province for Canadian residents.

Area of Destination

The area of destination is the place in a country where the traveller spends most of his/her time. If two or more main areas are inserted on the questionnaire, they are coded and split in the tabulation according to the number of nights spent in each area. Statistics on destination are presented by province for non-resident travellers

and by census region for resident travellers in the United States. Selected countries and regions visited become the criteria for residents returning from countries other than the United States.

Purpose of Trip

The main reason for the trip to a country is generally summarized for publication as follows:

Business. Includes attending a meeting or convention, a conference, trade show or seminar, or other work.

Visiting friends or relatives

Pleasure. Includes holiday, vacation, visiting second home, cottage or condo, and attending events and attractions.

Other purposes. Includes personal, in transit, shopping, educational study and other.

U.S. Census Regions and Corresponding States

Census Region	States
New England	Maine, New Hampshire, Vermont, Massachusetts, Connecticut, Rhode Island.
Middle Atlantic	New York, Pennsylvania, New Jersey.
South Atlantic	Maryland, Delaware, Washington D.C., West Virginia, Virginia, North Carolina, South Carolina, Georgia, Florida.
East North Central	Wisconsin, Michigan, Illinois, Indiana, Ohio.
West North Central	North Dakota, South Dakota, Minnesota, Iowa, Nebraska, Kansas, Missouri.
East South Central	Kentucky, Tennessee, Mississippi, Alabama.
West South Central	Oklahoma, Arkansas, Texas, Louisiana.
Mountain	Montana, Idaho, Wyoming, Nevada, Utah, Colorado, New Mexico, Arizona.
Pacific	Washington, Oregon, California.
Alaska	Alaska
Hawaii	Hawaii

FOR FURTHER READING

Selected Publications from Statistics Canada

Catalogue no.	Title
66-001-PIB	"International Travel – Advance Information" <i>Monthly, Bilingual</i>
66-201-XPB 66-201-XIB	"International Travel – Travel Between Canada and Other Countries" <i>Annual, Bilingual</i>
87-003-XPB 87-003-XIB	"Travel-Log" <i>Quarterly, Bilingual</i>
87-403-XPE 87-403-XPF 87-403-XIE 87-403-XIF	"Tourism Statistical Digest" <i>Biennial, 1999 and 2001 Editions</i>
87-212-XPB 87-212-XIE 87-212-XIF	"Canadian Travel Survey: Domestic Travel" <i>Annual, Bilingual</i>
13-009-XPB	National Tourism Indicators, Quarterly Estimates, <i>Quarterly, Bilingual</i>

See "How to order publication" on the inside cover.

Other Products and Services

Other addition to the selected publications listed above, Statistics Canada publishes a wide range of statistical reports on Canadian economic and social affairs. A comprehensive catalogue of all current publications is available from Statistics Canada, Ottawa (Canada), K1A 0T6 or on our Web site at www.statcan.ca

To order a publication, you may telephone 1 613 951-7277 or use facsimile number 1 613 951-1584. For toll free in Canada only telephone 1 800 700-1033. When ordering by telephone or facsimile a written confirmation is not required.



Entry Tally **Pointes des entrées** **E-62**
K1A 0T6

Port - Bureau	Date D-J M Y-A	Init.
---------------	-------------------	-------

U.S. Residents Résidents des É.-U.	Residents Returning from U.S. Only Résidents revenant des É.-U. seulement
3	4
Auto Same Day En auto le même jour	
5	6
One Night Une nuit	
7	8
Two or More Nights Deux nuits ou plus	
9	10
Cycles	

Residents Returning from Overseas Résidents revenant d'outre-mer	11
---	----

Residents of overseas countries Résidents de pays d'outre-mer	Same day Même jour	One or more nights Une nuit ou plus
U.K. - R.-U.	12	13
Germany-Allemagne	0 0 7 7	
France	1 0 2 9	
	1 0 2 5	

Port - Bureau	Date D-J M Y-A	Init.
---------------	-------------------	-------

COMMERCIAL TRUCKS - CAMIONS COMMERCIAUX	
U.S. Residents Résidents des É.-U.	Residents Returning from U.S. Only Résidents revenant des É.-U. seulement
14	15

MONTHLY TOTAL - TOTAL MENSUEL		
Type Moyen	U.S. Residents Résidents des É.-U.	Residents Returning from U.S. only Résidents revenant des É.-U. seulement
Bus - Autobus	Same day Même jour	16
	One or more nights Une nuit ou plus	17
Train	Passengers Passager	18
	Crew Équipage	19
	Pedestrians Piétons	20
	Immigrants and former residents Immigrés et anciens résidents	21
		22
		23
		24
		25
		26





**Canadian Resident
Questionnaire for
Same Day Automobile
Travel Between the
U.S. and Canada**

**Questionnaire destiné aux
résidents canadiens revenant
d'un voyage effectué aux
États-Unis en automobile le
même jour**

Welcome!

In a given year, more than 60 million international automobile trips of less than 24 hours are taken by both U.S. and Canadian residents. This voluntary sample survey measures the level of same day international travel – an economic and cultural characteristic of hundreds of communities on both sides of the border.

Bienvenue!

Au cours d'une année, il y a plus de 60 millions de voyages internationaux par automobile de moins de vingt-quatre heures effectués par des résidents américains et canadiens. Cette enquête-échantillonnage volontaire vise à déterminer les caractéristiques des voyages internationaux du même jour – une caractéristique culturelle et économique pour des centaines de localités des deux côtés de la frontière.

Please take the time to tell us about this same day trip. The survey is conducted under the authority of the Statistics Act (R.S.C. 1985, c S19) and your answers will be kept confidential. Your cooperation is essential and appreciated. Please print.

Veuillez prendre le temps de nous renseigner sur ce voyage d'un même jour. L'enquête est menée selon les dispositions de la Loi sur la statistique (L.R.C. 1985 ch. S19) et vos réponses seront tenues confidentielles. Votre collaboration est essentielle et appréciée. Écrire en lettres moulées s.v.p.

1. Where do you live? Country: 1 Canada 2 United States 3 Other
Où habitez-vous? Pays: Pays: Canada États-Unis Autres

Province: _____
City/Town: _____
Cité/Ville: _____
Postal Code: _____
Code postal: _____

2. On this trip, where and when did you enter Canada?
Lors de ce voyage, où et quand êtes-vous entré(e) au Canada?

_____ Date
_____ M D / J Y / A
Canadian border crossing – Endroit (Poste-frontière)

Definition of TRAVELLING PARTY . . . Includes yourself and only those for whom you feel comfortable reporting spending.
La définition D'UN GROUPE ... Nous vous demandons d'inclure vous-même et seulement les personnes pour qui vous ne voyez pas d'inconvénient à rapporter les dépenses.

3. On this trip, how many people, including yourself, were in the travelling party?
Lors de ce voyage, combien de personnes, y compris vous-même, comptait votre groupe?

4. What was the main destination on this trip?
Quelle était votre destination principale lors de ce voyage?

State: _____
Etat: _____
City/Town: _____
Cité/Ville: _____

5. What was the TOTAL SPENDING (including cash or credit transactions) on this trip for all persons reported in Question 3? Estimates are appreciated or if no spending occurred, please check the appropriate box.
Quelles étaient LES DÉPENSES TOTALES (incluant les transactions au comptant ou à crédit) au cours de ce voyage pour toutes les personnes déclarées à la question 3? Des estimations sont satisfaisantes ou s'il n'y a pas eu de dépenses, veuillez cocher la boîte appropriée.

6 Spending \$ _____ .00 Currency \$ Canada \$ U.S.
Dépense Devise

7 No Spending
Aucune dépense

6. What was the MAIN reason for this trip? / Quelle était la raison PRINCIPALE de ce voyage?

1 Commuting to work Navette travail/domicile 2 Business Affaires 3 Pleasure (including shopping or entertainment) Agrément (y compris magasinage ou divertissements)
4 Visit friends or relatives Visite à des amis ou des parents 5 Other (specify) Autre (précisez) _____

Confidential when completed
THANK YOU. Please drop this card in
any mail box in Canada.



Confidentiel une fois rempli
MERCI. Veuillez déposer cette carte dans
n'importe quelle boîte postale au Canada.

8-2200-338: 1999-06-21 STC/ECT-250-02797 SQC/ECT-250-02797

Welcome to Canada

Your Customs Declaration Card – Completion Guide

This guide gives you information about rules and exemptions that may apply to you and the goods you are bringing into Canada. The following information corresponds to the sections on the attached Customs Declaration Card.

Part A – All travellers

All travellers must be identified on a Customs Declaration Card. You may list up to five family members living at the **same address** on one declaration card. Please ensure that each traveller's answers are included on the card. **Each traveller is responsible for his or her own declaration.**

You must declare all goods that you are bringing into Canada, whether or not they are part of your exemption. A customs officer may examine your goods. It is important to note that the value of goods that do not qualify for a personal exemption may be subject to duties, taxes, and/or fees.

Customs officers may seize any goods you do not declare or any goods you falsely declare. You may also face prosecution.

Goods like the following ones may be **restricted, controlled, or prohibited** in Canada, or you may need a **special admission permit**. Failure to declare all of these items could result in fines, arrest, and prosecution:

- Firearms or other weapons (e.g., mace, switchblades, fireworks);
- Drugs;
- Endangered species (live specimens or products made from wild plants or animals, e.g., ivory, corals, reptile skin products); and
- Cultural property (e.g., antiquities, cultural objects).

Under Canadian law, as administered by the **Canadian Food Inspection Agency**, you have to declare all animals and plants and their products. Failure to do so could result in fines and prosecution.

There are specific personal exemption limits for importing alcohol and tobacco into Canada. Determine your limit from the following table.

Minimum age	Province or territory	Alcohol and tobacco
18 years	Alberta, Manitoba, Quebec	1.5 L of wine or 1.14 L of liquor or 24 x 355 mL (12 oz.) bottles/cans of beer or ale (8.5 L)
19 years	All others	
18 years	Alberta, Manitoba, Quebec, Saskatchewan, Yukon Territory, Northwest Territories, Nunavut	200 cigarettes, 200 tobacco sticks, 50 cigars or 50 cigarillos, and 200 grams manufactured tobacco
19 years	All others	

During your travels, you may have been exposed to infectious diseases not common in Canada. While the risks posed by most of these illnesses are low, some, such as malaria, may be life threatening. If you develop a fever or flu-like illness within three months of travel to a tropical country, **Health Canada** advises you to get immediate medical attention, inform your doctor of your travel history, and ask for a blood test to rule out malaria.

(Français au verso)



Part B – Visitors to Canada

All visitors identified in Part A must be included in Part B.

You can bring in **personal goods** without paying duty or tax, as long as you do not leave them in Canada. You can also bring the amounts of alcohol and tobacco listed in Table 1 without paying duty or tax.

You can bring in **gifts** without paying duty or tax, as long as they are not alcohol or tobacco or business goods, and they have a value of CAN\$60 or less per gift. Gifts valued at more than CAN\$60 each are subject to duty and tax on the amount of their value that exceeds CAN\$60.

Citizenship and Immigration Canada advises you that all visitors admitted to Canada will be permitted to stay for a maximum of six months, unless otherwise notified in writing by an examining officer.

Part C – Residents of Canada

Each resident must complete Part C in the **same order** as listed in Part A.

Your declaration must include the total value of all goods (including gifts) that you have purchased, received, or acquired abroad or at duty-free shops and that you are bringing into Canada.

The following table lists the available exemptions.

Minimum absence from Canada	Exemption limit – CAN\$	Alcohol and tobacco
24 hours	\$50	No
48 hours	\$200	Yes – see Table 1
7 days	\$750	Yes – see Table 1

Each traveller is allowed only **one** of these exemptions per trip, and the value of one traveller's goods **cannot be combined** with the value of another traveller's goods.

The \$50 exemption does not apply if the total value of your goods is more than \$50. The \$750 exemption can include goods (other than alcohol and tobacco) you acquired during your trip, which are not accompanying you. To calculate the number of days absent, do not count the day you left Canada, but include the day you return.

Part D – Signatures

Each traveller must sign the declaration in the **same order** as listed in Part A. Travellers under 16 years of age do not have to sign.

Information from this declaration will be used for customs control purposes, and may be shared with other government departments to enforce Canadian law. Details are available in the Treasury Board of Canada publication called *Infosource*, under the reference number RC PPU 043. *Infosource* is available at public libraries, Government public reading rooms, and on the Internet at: www.cio-dpi.gc.ca/ip/infosource

Each person must sign. Have your detached declaration card and your proof of citizenship ready to hand to a customs officer.

CREW IMM FR REF DIP MILT

PAX
Customs Declaration Card

Part A – All travellers (must live at the same home address)

Last name, first name, and initials

1Date of birth

Y Y Y Y M M D D

Citizenship

Last name, first name, and initials

2Date of birth

Y Y Y Y M M D D

Citizenship

Last name, first name, and initials

3Date of birth

Y Y Y Y M M D D

Citizenship

Last name, first name, and initials

4Date of birth

Y Y Y Y M M D D

Citizenship

Last name, first name, and initials

5Date of birth

Y Y Y Y M M D D

Citizenship

Home address – Number, street
Town/city

Province or state
Country
Postal/Zip Code

Arriving by	Purpose of trip	Study	Arriving from	U.S. only
Airline	Personal	<input type="checkbox"/>	Other country direct	<input type="checkbox"/>
Flight No.	Business	<input type="checkbox"/>	Other country via the U.S.	<input type="checkbox"/>

I am/we are bringing into Canada:

• Firearms or other weapons	Yes	No
• Goods related to my/our profession and/or commercial goods, whether or not for resale (e.g., samples, tools, equipment)	<input type="checkbox"/>	<input type="checkbox"/>
• Animals, birds, insects, plants, plant parts, soil, fruits, vegetables, meats, eggs, dairy products, living organisms, vaccines	<input type="checkbox"/>	<input type="checkbox"/>
• Articles made or derived from endangered species	<input type="checkbox"/>	<input type="checkbox"/>

I/we have shipped goods which are not accompanying me/us.

I/we will be visiting a farm in Canada within the next 14 days.

Part B – Visitors to Canada

Duration of stay in Canada (days)	Full value of each gift over CAN\$60	Specify quantities	
		Alcohol	Tobacco

Part C – Residents of Canada (Complete in the same order as Part A)

Date left Canada	Value of goods – CAN\$ (including gifts, alcohol, & tobacco)	Specify quantities	
Y M D		Alcohol	Tobacco

Part D – Signatures (age 16 and older)

	3

Detach and do not fold card



Government travel survey of U.S. visitors to Canada

Welcome to Canada!

We are interested in knowing about the trip you are taking in Canada. Information from this voluntary survey, which is a cooperative effort between the U.S. and Canadian Governments, will be used by the travel industry to better serve you, the travelling public. Upon your return to the U.S., please take

10-15 minutes to complete this two page questionnaire. The survey is conducted under the authority of the Statistics Act (R.S.C. 1985, c. S19) and individual information from your questionnaire will be kept confidential. If details regarding spending are unavailable, estimates would be appreciated.

Confidential when completed
La version française est disponible sur demande

<p>1. Where do you live? <i>Usual place of residence</i> PLEASE PRINT</p>	<p>City/Town <input type="text"/> State <input type="text"/> Country <input type="text" value="USA"/> Zip code <input type="text"/></p>																																																																																								
<p>2. Where and when did you enter Canada? Where and when will you leave Canada?</p>	<p>Name of Canadian border crossing or airport <input type="text"/> <input type="text"/> Month Day Year <input type="text"/> <input type="text"/></p>																																																																																								
<p>Definition of travelling party for the purpose of this questionnaire: ▶ includes yourself and only those for whom you feel comfortable reporting spending and activities.</p>																																																																																									
<p>3. How many people including yourself were in the travelling party?</p>	<p><input type="text"/> <input type="text"/></p>																																																																																								
<p>4. How many people in the travelling party were in each of the following groups?</p>	<table border="1" style="width:100%; border-collapse: collapse; text-align: center;"> <tr> <td style="width:5%;">Age groups ▶</td> <td style="width:5%;">Under 2 years</td> <td style="width:5%;">2 to 11</td> <td style="width:5%;">12 to 14</td> <td style="width:5%;">15 to 19</td> <td style="width:5%;">20 to 24</td> <td style="width:5%;">25 to 34</td> <td style="width:5%;">35 to 44</td> <td style="width:5%;">45 to 54</td> <td style="width:5%;">55 to 64</td> <td style="width:5%;">65 to 74</td> <td style="width:5%;">75 and over</td> </tr> <tr> <td>Female ▶</td> <td>01</td> <td>02</td> <td>03</td> <td>04</td> <td>05</td> <td>06</td> <td>07</td> <td>08</td> <td>09</td> <td>10</td> <td>11</td> </tr> <tr> <td>Male ▶</td> <td>12</td> <td>13</td> <td>14</td> <td>15</td> <td>16</td> <td>17</td> <td>18</td> <td>19</td> <td>20</td> <td>21</td> <td>22</td> </tr> </table>	Age groups ▶	Under 2 years	2 to 11	12 to 14	15 to 19	20 to 24	25 to 34	35 to 44	45 to 54	55 to 64	65 to 74	75 and over	Female ▶	01	02	03	04	05	06	07	08	09	10	11	Male ▶	12	13	14	15	16	17	18	19	20	21	22																																																				
Age groups ▶	Under 2 years	2 to 11	12 to 14	15 to 19	20 to 24	25 to 34	35 to 44	45 to 54	55 to 64	65 to 74	75 and over																																																																														
Female ▶	01	02	03	04	05	06	07	08	09	10	11																																																																														
Male ▶	12	13	14	15	16	17	18	19	20	21	22																																																																														
<p>5. What was the travelling party's main reason for taking this trip to Canada? <i>Check one only.</i> <i>(e.g., If a person on a business trip took his/her family along to visit relatives, check reason for trip as Business.)</i></p>	<table style="width:100%;"> <tr> <td style="width:33%;">Business</td> <td style="width:33%;">Pleasure</td> <td style="width:33%;">Other</td> </tr> <tr> <td>01 <input type="radio"/> Meetings</td> <td>04 <input type="radio"/> Holiday, vacation</td> <td>08 <input type="radio"/> Personal (<i>medical, wedding, etc.</i>)</td> </tr> <tr> <td>02 <input type="radio"/> Convention, conference, trade show, seminar</td> <td>05 <input type="radio"/> Visit friends or relatives</td> <td>09 <input type="radio"/> In transit to / from other countries</td> </tr> <tr> <td>03 <input type="radio"/> Other work</td> <td>06 <input type="radio"/> Visit second home, cottage, condo</td> <td>10 <input type="radio"/> Educational study</td> </tr> <tr> <td></td> <td>07 <input type="radio"/> Attend events, attractions</td> <td>11 <input type="radio"/> Shopping</td> </tr> <tr> <td></td> <td colspan="2" style="text-align: center;">12 <input type="radio"/> Other – Specify _____</td> </tr> </table>	Business	Pleasure	Other	01 <input type="radio"/> Meetings	04 <input type="radio"/> Holiday, vacation	08 <input type="radio"/> Personal (<i>medical, wedding, etc.</i>)	02 <input type="radio"/> Convention, conference, trade show, seminar	05 <input type="radio"/> Visit friends or relatives	09 <input type="radio"/> In transit to / from other countries	03 <input type="radio"/> Other work	06 <input type="radio"/> Visit second home, cottage, condo	10 <input type="radio"/> Educational study		07 <input type="radio"/> Attend events, attractions	11 <input type="radio"/> Shopping		12 <input type="radio"/> Other – Specify _____																																																																							
Business	Pleasure	Other																																																																																							
01 <input type="radio"/> Meetings	04 <input type="radio"/> Holiday, vacation	08 <input type="radio"/> Personal (<i>medical, wedding, etc.</i>)																																																																																							
02 <input type="radio"/> Convention, conference, trade show, seminar	05 <input type="radio"/> Visit friends or relatives	09 <input type="radio"/> In transit to / from other countries																																																																																							
03 <input type="radio"/> Other work	06 <input type="radio"/> Visit second home, cottage, condo	10 <input type="radio"/> Educational study																																																																																							
	07 <input type="radio"/> Attend events, attractions	11 <input type="radio"/> Shopping																																																																																							
	12 <input type="radio"/> Other – Specify _____																																																																																								
<p>6. On this trip in Canada did anyone in the travelling party . . . <i>Check all that apply.</i></p>	<table style="width:100%;"> <tr> <td style="width:33%;">21 <input type="radio"/> Visit friends or relatives</td> <td style="width:33%;">31 <input type="radio"/> Visit a National, Provincial, Regional Park or Historic site</td> </tr> <tr> <td>22 <input type="radio"/> Attend festivals or fairs</td> <td>32 <input type="radio"/> Participate in sports or outdoor activities – Specify ▼</td> </tr> <tr> <td>23 <input type="radio"/> Attend cultural events (<i>plays, concerts, etc.</i>)</td> <td>33 <input type="radio"/> Swimming</td> </tr> <tr> <td>24 <input type="radio"/> Attend sports events</td> <td>34 <input type="radio"/> Other water sports</td> </tr> <tr> <td>25 <input type="radio"/> Go shopping</td> <td>35 <input type="radio"/> Hunting or fishing</td> </tr> <tr> <td>26 <input type="radio"/> Go sightseeing</td> <td>36 <input type="radio"/> Cross country skiing</td> </tr> <tr> <td>27 <input type="radio"/> Participate in nightlife/entertainment</td> <td>37 <input type="radio"/> Downhill skiing</td> </tr> <tr> <td>28 <input type="radio"/> Dine at high quality restaurants</td> <td>38 <input type="radio"/> Other sports – Specify _____</td> </tr> <tr> <td>29 <input type="radio"/> Visit a theme park</td> <td></td> </tr> <tr> <td>30 <input type="radio"/> Visit a zoo, museum, natural display</td> <td>39 <input type="radio"/> Other – Specify _____</td> </tr> </table>	21 <input type="radio"/> Visit friends or relatives	31 <input type="radio"/> Visit a National, Provincial, Regional Park or Historic site	22 <input type="radio"/> Attend festivals or fairs	32 <input type="radio"/> Participate in sports or outdoor activities – Specify ▼	23 <input type="radio"/> Attend cultural events (<i>plays, concerts, etc.</i>)	33 <input type="radio"/> Swimming	24 <input type="radio"/> Attend sports events	34 <input type="radio"/> Other water sports	25 <input type="radio"/> Go shopping	35 <input type="radio"/> Hunting or fishing	26 <input type="radio"/> Go sightseeing	36 <input type="radio"/> Cross country skiing	27 <input type="radio"/> Participate in nightlife/entertainment	37 <input type="radio"/> Downhill skiing	28 <input type="radio"/> Dine at high quality restaurants	38 <input type="radio"/> Other sports – Specify _____	29 <input type="radio"/> Visit a theme park		30 <input type="radio"/> Visit a zoo, museum, natural display	39 <input type="radio"/> Other – Specify _____																																																																				
21 <input type="radio"/> Visit friends or relatives	31 <input type="radio"/> Visit a National, Provincial, Regional Park or Historic site																																																																																								
22 <input type="radio"/> Attend festivals or fairs	32 <input type="radio"/> Participate in sports or outdoor activities – Specify ▼																																																																																								
23 <input type="radio"/> Attend cultural events (<i>plays, concerts, etc.</i>)	33 <input type="radio"/> Swimming																																																																																								
24 <input type="radio"/> Attend sports events	34 <input type="radio"/> Other water sports																																																																																								
25 <input type="radio"/> Go shopping	35 <input type="radio"/> Hunting or fishing																																																																																								
26 <input type="radio"/> Go sightseeing	36 <input type="radio"/> Cross country skiing																																																																																								
27 <input type="radio"/> Participate in nightlife/entertainment	37 <input type="radio"/> Downhill skiing																																																																																								
28 <input type="radio"/> Dine at high quality restaurants	38 <input type="radio"/> Other sports – Specify _____																																																																																								
29 <input type="radio"/> Visit a theme park																																																																																									
30 <input type="radio"/> Visit a zoo, museum, natural display	39 <input type="radio"/> Other – Specify _____																																																																																								
<p>7. In comparison with the U.S., generally how would you rate the following aspects of your trip in Canada?</p>	<table style="width:100%;"> <tr> <td style="width:33%;"></td> <td style="width:33%; text-align: center;">Better</td> <td style="width:33%; text-align: center;">Same</td> <td style="width:33%; text-align: center;">Not as good</td> </tr> <tr> <td>Transportation services</td> <td style="text-align: center;">01 <input type="radio"/></td> <td style="text-align: center;">06 <input type="radio"/></td> <td style="text-align: center;">11 <input type="radio"/></td> </tr> <tr> <td>Accommodation services</td> <td style="text-align: center;">02 <input type="radio"/></td> <td style="text-align: center;">07 <input type="radio"/></td> <td style="text-align: center;">12 <input type="radio"/></td> </tr> <tr> <td>Hospitality of local people</td> <td style="text-align: center;">03 <input type="radio"/></td> <td style="text-align: center;">08 <input type="radio"/></td> <td style="text-align: center;">13 <input type="radio"/></td> </tr> <tr> <td>Value for your money</td> <td style="text-align: center;">04 <input type="radio"/></td> <td style="text-align: center;">09 <input type="radio"/></td> <td style="text-align: center;">14 <input type="radio"/></td> </tr> <tr> <td>Variety of things to see and do</td> <td style="text-align: center;">05 <input type="radio"/></td> <td style="text-align: center;">10 <input type="radio"/></td> <td style="text-align: center;">15 <input type="radio"/></td> </tr> </table>		Better	Same	Not as good	Transportation services	01 <input type="radio"/>	06 <input type="radio"/>	11 <input type="radio"/>	Accommodation services	02 <input type="radio"/>	07 <input type="radio"/>	12 <input type="radio"/>	Hospitality of local people	03 <input type="radio"/>	08 <input type="radio"/>	13 <input type="radio"/>	Value for your money	04 <input type="radio"/>	09 <input type="radio"/>	14 <input type="radio"/>	Variety of things to see and do	05 <input type="radio"/>	10 <input type="radio"/>	15 <input type="radio"/>																																																																
	Better	Same	Not as good																																																																																						
Transportation services	01 <input type="radio"/>	06 <input type="radio"/>	11 <input type="radio"/>																																																																																						
Accommodation services	02 <input type="radio"/>	07 <input type="radio"/>	12 <input type="radio"/>																																																																																						
Hospitality of local people	03 <input type="radio"/>	08 <input type="radio"/>	13 <input type="radio"/>																																																																																						
Value for your money	04 <input type="radio"/>	09 <input type="radio"/>	14 <input type="radio"/>																																																																																						
Variety of things to see and do	05 <input type="radio"/>	10 <input type="radio"/>	15 <input type="radio"/>																																																																																						
<p>8. While in Canada, what place(s) did the travelling party visit? <i>Please name all places visited even if you did not stay overnight. (Exclude visits to airports for the purpose of changing planes.)</i> <i>Please print.</i></p>	<table border="1" style="width:100%; border-collapse: collapse; text-align: center;"> <tr> <th rowspan="2" style="width:30%;">Name of city(ies) / town(s) visited</th> <th rowspan="2" style="width:30%;">Name of province(s) / territory(ies) visited</th> <th rowspan="2" style="width:10%;">Number of nights spent at each place</th> <th colspan="6" style="width:30%;">Where did the travelling party stay? <i>Check all that apply</i></th> </tr> <tr> <th style="width:5%;">Hotel</th> <th style="width:5%;">Motel</th> <th style="width:5%;">Home of friends or relatives</th> <th style="width:5%;">Camping or trailer park</th> <th style="width:5%;">Cottage or cabin</th> <th style="width:5%;">Other</th> </tr> <tr> <td> </td> <td> </td> <td> </td> <td>1 <input type="radio"/></td> <td>2 <input type="radio"/></td> <td>3 <input type="radio"/></td> <td>4 <input type="radio"/></td> <td>5 <input type="radio"/></td> <td>6 <input type="radio"/></td> </tr> <tr> <td> </td> <td> </td> <td> </td> <td>1 <input type="radio"/></td> <td>2 <input type="radio"/></td> <td>3 <input type="radio"/></td> <td>4 <input type="radio"/></td> <td>5 <input type="radio"/></td> <td>6 <input type="radio"/></td> </tr> <tr> <td> </td> <td> </td> <td> </td> <td>1 <input type="radio"/></td> <td>2 <input type="radio"/></td> <td>3 <input type="radio"/></td> <td>4 <input type="radio"/></td> <td>5 <input type="radio"/></td> <td>6 <input type="radio"/></td> </tr> <tr> <td> </td> <td> </td> <td> </td> <td>1 <input type="radio"/></td> <td>2 <input type="radio"/></td> <td>3 <input type="radio"/></td> <td>4 <input type="radio"/></td> <td>5 <input type="radio"/></td> <td>6 <input type="radio"/></td> </tr> <tr> <td> </td> <td> </td> <td> </td> <td>1 <input type="radio"/></td> <td>2 <input type="radio"/></td> <td>3 <input type="radio"/></td> <td>4 <input type="radio"/></td> <td>5 <input type="radio"/></td> <td>6 <input type="radio"/></td> </tr> <tr> <td> </td> <td> </td> <td> </td> <td>1 <input type="radio"/></td> <td>2 <input type="radio"/></td> <td>3 <input type="radio"/></td> <td>4 <input type="radio"/></td> <td>5 <input type="radio"/></td> <td>6 <input type="radio"/></td> </tr> <tr> <td> </td> <td> </td> <td> </td> <td>1 <input type="radio"/></td> <td>2 <input type="radio"/></td> <td>3 <input type="radio"/></td> <td>4 <input type="radio"/></td> <td>5 <input type="radio"/></td> <td>6 <input type="radio"/></td> </tr> <tr> <td> </td> <td> </td> <td> </td> <td>1 <input type="radio"/></td> <td>2 <input type="radio"/></td> <td>3 <input type="radio"/></td> <td>4 <input type="radio"/></td> <td>5 <input type="radio"/></td> <td>6 <input type="radio"/></td> </tr> </table>		Name of city(ies) / town(s) visited	Name of province(s) / territory(ies) visited	Number of nights spent at each place	Where did the travelling party stay? <i>Check all that apply</i>						Hotel	Motel	Home of friends or relatives	Camping or trailer park	Cottage or cabin	Other				1 <input type="radio"/>	2 <input type="radio"/>	3 <input type="radio"/>	4 <input type="radio"/>	5 <input type="radio"/>	6 <input type="radio"/>				1 <input type="radio"/>	2 <input type="radio"/>	3 <input type="radio"/>	4 <input type="radio"/>	5 <input type="radio"/>	6 <input type="radio"/>				1 <input type="radio"/>	2 <input type="radio"/>	3 <input type="radio"/>	4 <input type="radio"/>	5 <input type="radio"/>	6 <input type="radio"/>				1 <input type="radio"/>	2 <input type="radio"/>	3 <input type="radio"/>	4 <input type="radio"/>	5 <input type="radio"/>	6 <input type="radio"/>				1 <input type="radio"/>	2 <input type="radio"/>	3 <input type="radio"/>	4 <input type="radio"/>	5 <input type="radio"/>	6 <input type="radio"/>				1 <input type="radio"/>	2 <input type="radio"/>	3 <input type="radio"/>	4 <input type="radio"/>	5 <input type="radio"/>	6 <input type="radio"/>				1 <input type="radio"/>	2 <input type="radio"/>	3 <input type="radio"/>	4 <input type="radio"/>	5 <input type="radio"/>	6 <input type="radio"/>				1 <input type="radio"/>	2 <input type="radio"/>	3 <input type="radio"/>	4 <input type="radio"/>	5 <input type="radio"/>	6 <input type="radio"/>
Name of city(ies) / town(s) visited	Name of province(s) / territory(ies) visited	Number of nights spent at each place				Where did the travelling party stay? <i>Check all that apply</i>																																																																																			
			Hotel	Motel	Home of friends or relatives	Camping or trailer park	Cottage or cabin	Other																																																																																	
			1 <input type="radio"/>	2 <input type="radio"/>	3 <input type="radio"/>	4 <input type="radio"/>	5 <input type="radio"/>	6 <input type="radio"/>																																																																																	
			1 <input type="radio"/>	2 <input type="radio"/>	3 <input type="radio"/>	4 <input type="radio"/>	5 <input type="radio"/>	6 <input type="radio"/>																																																																																	
			1 <input type="radio"/>	2 <input type="radio"/>	3 <input type="radio"/>	4 <input type="radio"/>	5 <input type="radio"/>	6 <input type="radio"/>																																																																																	
			1 <input type="radio"/>	2 <input type="radio"/>	3 <input type="radio"/>	4 <input type="radio"/>	5 <input type="radio"/>	6 <input type="radio"/>																																																																																	
			1 <input type="radio"/>	2 <input type="radio"/>	3 <input type="radio"/>	4 <input type="radio"/>	5 <input type="radio"/>	6 <input type="radio"/>																																																																																	
			1 <input type="radio"/>	2 <input type="radio"/>	3 <input type="radio"/>	4 <input type="radio"/>	5 <input type="radio"/>	6 <input type="radio"/>																																																																																	
			1 <input type="radio"/>	2 <input type="radio"/>	3 <input type="radio"/>	4 <input type="radio"/>	5 <input type="radio"/>	6 <input type="radio"/>																																																																																	
			1 <input type="radio"/>	2 <input type="radio"/>	3 <input type="radio"/>	4 <input type="radio"/>	5 <input type="radio"/>	6 <input type="radio"/>																																																																																	



**United States Resident
Questionnaire for
Same Day Automobile
Travel Between the
U.S. and Canada**

05-

Welcome! This survey which is a cooperative effort between the U.S. and Canadian Governments, measures the level of U.S. same day international travel – an economic and cultural characteristic of hundreds of communities.

Please take the time to tell us about this same day trip. This voluntary survey is conducted under the authority of the Statistics Act (R.S.C. 1985, c S19) and your answers will be kept confidential. Your cooperation is essential and appreciated. Please print.

1. Where do you live? Country: 2 United States 1 Canada 3 Other

State:

City/Town:

ZIP Code:

2. On this trip, where and when did you enter Canada? Canadian border crossing

Date: (Month / Day / Year)

Definition of TRAVELLING PARTY . . . Includes yourself and only those for whom you feel comfortable reporting spending.

3. On this trip, how many people, including yourself, were in the travelling party?

4. What was the main destination on this trip?

Province:

City/Town:

5. What was the TOTAL SPENDING (including cash or credit transactions) on this trip for all persons reported in Question 3? Estimates are appreciated or if no spending occurred, please check the appropriate box.

6 Spending > \$.00 > Currency 8 \$ Canadian
OR
7 No spending 9 \$ U.S.

6. What was the MAIN reason for this trip?

1 Commuting to work 2 Business 3 Pleasure (including shopping or entertainment)

4 Visit friends or relatives 5 Other (specify)

THANK YOU. Please drop this card in any mail box on your return to the U.S.
Confidential when completed (LE FRANÇAIS EST DISPONIBLE SUR DEMANDE)

8-2200-345.1: 1999-06-21 STC/ECT-250-02797

Statistics Canada / Statistique Canada



Canada