

Table 1/Tableau 1
 Respiratory Virus Detections/Isolations for the week ending December 24, 2005 (Reporting Week 200551)
 Détection/isolement de virus des voies respiratoires pour la semaine se terminant le 24 décembre 2005 (Code hebdomadaire 200551)

| Reporting Laboratory Laboratoire rapporteur | Flu/Grippe Test | Flu/Grippe A Pos. | Flu/Grippe B Pos. | R.S.V. Test | R.S.V. Pos. | PIV Test | PIV 1 Pos. | PIV 2 Pos. | PIV 3 Pos. | PIV 4 Pos. | Other/Autre PIV Pos. | Adeno Test | Adeno Pos. |
|--|--------------------|----------------------|----------------------|----------------|----------------|-------------|---------------|---------------|---------------|---------------|-------------------------|---------------|---------------|
| Newfoundland./Terre-Neuve | 4 | 0 | 0 | 3 | 3 | 0 | 0 | 0 | 0 | 0 | 0 | 0 | 0 |
| Prince Edward Island./ Île-du-Prince-Édouard | 5 | 0 | 0 | 9 | 1 | 5 | 0 | 0 | 0 | 0 | 0 | 5 | 0 |
| Nova Scotia/Nouvelle-Écosse | - | - | - | - | - | - | - | - | - | - | - | - | - |
| New Brunswick/Nouveau-Brunswick | - | - | - | - | - | - | - | - | - | - | - | - | - |
| Atlantic/Atlantique | 9 | 0 | 0 | 12 | 4 | 5 | 0 | 0 | 0 | 0 | 0 | 5 | 0 |
| Région Nord-Est | 19 | 0 | 0 | 10 | 0 | 0 | 0 | 0 | 0 | 0 | 0 | 0 | 0 |
| Québec-Chaudière-Appalaches | 62 | 0 | 0 | 61 | 0 | 61 | 1 | 0 | 0 | 0 | 0 | 96 | 8 |
| Centre-du-Québec | 58 | 1 | 0 | 23 | 6 | 9 | 0 | 0 | 0 | 0 | 0 | 10 | 1 |
| Montréal-Laval | 215 | 2 | 0 | 324 | 75 | 240 | 6 | 3 | 1 | 0 | 0 | 250 | 11 |
| Ouest du Québec | 23 | 1 | 0 | 10 | 3 | 0 | 0 | 0 | 0 | 0 | 0 | 0 | 0 |
| Montérégie | 15 | 0 | 0 | 28 | 10 | 0 | 0 | 0 | 0 | 0 | 0 | 0 | 0 |
| Province of/de Québec | 392 | 4 | 0 | 456 | 94 | 310 | 7 | 3 | 1 | 0 | 0 | 356 | 20 |
| Ottawa P.H.L. | 0 | 0 | 0 | 2 | 0 | 0 | 0 | 0 | 0 | 0 | 0 | 0 | 0 |
| CHEO/HEEO - Ottawa | - | - | - | - | - | - | - | - | - | - | - | - | - |
| Kingston | - | - | - | - | - | - | - | - | - | - | - | - | - |
| Toronto Medical Laboratory | - | - | - | - | - | - | - | - | - | - | - | - | - |
| C.P.H.L. - Toronto | 129 | 1 | 0 | 158 | 7 | 129 | 2 | 6 | 0 | 0 | 0 | 129 | 4 |
| Sick Kids/Hospital - Toronto | 97 | 1 | 0 | 97 | 14 | 97 | 2 | 3 | 0 | 0 | 0 | 97 | 3 |
| Sunnybrook & Women's College HSC | 13 | 0 | 0 | 13 | 1 | 13 | 0 | 0 | 0 | 0 | 0 | 13 | 0 |
| Sault Ste. Marie | 2 | 0 | 0 | 2 | 1 | 2 | 1 | 0 | 0 | 0 | 0 | 2 | 0 |
| Timmins | 5 | 0 | 0 | 5 | 0 | 5 | 1 | 0 | 0 | 0 | 0 | 5 | 0 |
| St. Joseph's - London | 23 | 0 | 0 | 23 | 0 | 23 | 0 | 0 | 0 | 0 | 0 | 23 | 0 |
| London P.H.L. | - | - | - | - | - | - | - | - | - | - | - | - | - |
| Orillia P.H.L. | - | - | - | - | - | - | - | - | - | - | - | - | - |
| Windsor | - | - | - | - | - | - | - | - | - | - | - | - | - |
| Thunder Bay | 8 | 0 | 0 | 13 | 0 | 8 | 1 | 0 | 0 | 0 | 0 | 8 | 0 |
| Sudbury P.H.L. | 10 | 0 | 0 | 10 | 0 | 10 | 0 | 2 | 0 | 0 | 0 | 11 | 0 |
| Hamilton P.H.L. | 1 | 0 | 0 | 0 | 0 | 0 | 0 | 0 | 0 | 0 | 0 | 0 | 0 |
| Peterborough P.H.L. | 24 | 1 | 0 | 24 | 0 | 24 | 2 | 1 | 0 | 0 | 0 | 24 | 0 |
| Province of/de l'Ontario | 312 | 3 | 0 | 347 | 23 | 311 | 9 | 12 | 0 | 0 | 0 | 312 | 7 |
| Manitoba | 43 | 0 | 0 | 46 | 0 | 42 | 5 | 0 | 0 | 0 | 0 | 42 | 1 |
| Regina | 105 | 0 | 2 | 105 | 0 | 105 | 7 | 0 | 0 | 0 | 0 | 105 | 2 |
| Saskatoon | 15 | 0 | 0 | 14 | 0 | 15 | 0 | 0 | 0 | 0 | 0 | 15 | 0 |
| Province of/de la Saskatchewan | 120 | 0 | 2 | 119 | 0 | 120 | 7 | 0 | 0 | 0 | 0 | 120 | 2 |
| Calgary | 181 | 0 | 28 | 140 | 4 | 138 | 0 | 0 | 0 | 0 | 5 | 129 | 6 |
| Edmonton | 269 | 0 | 8 | 273 | 23 | 269 | 0 | 0 | 0 | 0 | 27 | 129 | 22 |
| Province of/de l'Alberta | 450 | 0 | 36 | 413 | 27 | 407 | 0 | 0 | 0 | 0 | 32 | 258 | 28 |
| Prairies | 613 | 0 | 38 | 578 | 27 | 569 | 12 | 0 | 0 | 0 | 32 | 420 | 31 |
| British Columbia/Colombie-Britannique | - | - | - | - | - | - | - | - | - | - | - | - | - |
| CANADA | 1326 | 7 | 38 | 1393 | 148 | 1195 | 28 | 15 | 1 | 0 | 32 | 1093 | 58 |

Also available at: <http://www.phac-aspc.gc.ca/bid-bmi/dsd-dsm/rvdi-divr/index-html>

Aussi disponible sur le site: http://www.phac-aspc.gc.ca/bid-bmi/dsd-dsm/rvdi-divr/index_f.html

Table 2/Tableau 2

Respiratory Virus Detections/Isolations for the period August 28, 2005 - December 24, 2005
 Détection/isolement de virus des voies respiratoires pour la période du 28 août 2005 - 24 décembre 2005
 (Reporting Weeks 200535 -200551/Code hebdomadaire 200535-200551)

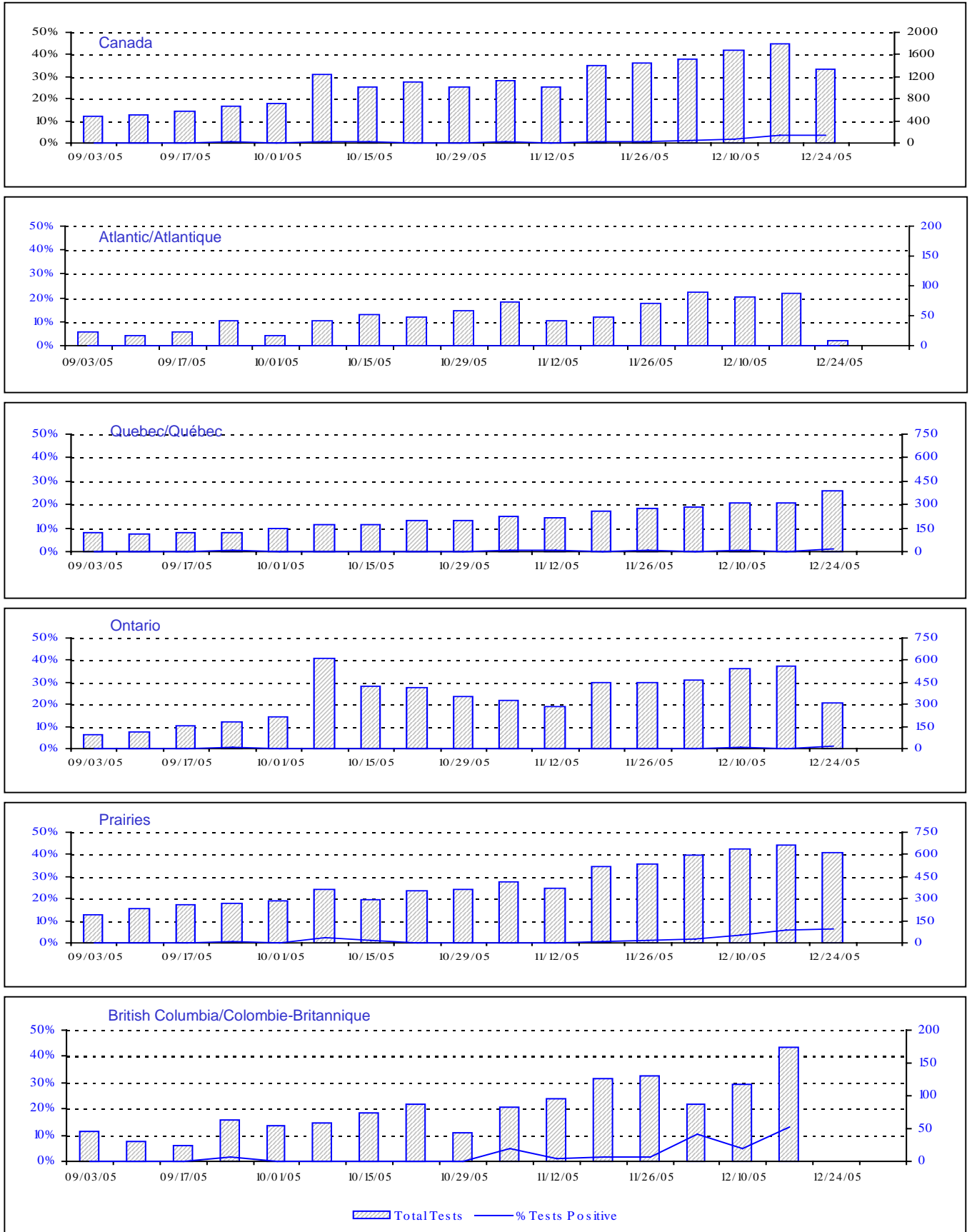
| Reporting Laboratory Laboratoire rapporteur | Flu/Grippe Test | Flu/Grippe A Pos. | Flu/Grippe B Pos. | R.S.V. Test | R.S.V. Pos. | PIV Test | PIV 1 Pos. | PIV 2 Pos. | PIV 3 Pos. | PIV 4 Pos. | Other/Autre PIV Pos. | Adeno Test | Adeno Pos. |
|--|--------------------|----------------------|----------------------|----------------|----------------|-------------|---------------|---------------|---------------|---------------|-------------------------|---------------|---------------|
| Newfoundland/Terre-Neuve | 200 | 0 | 0 | 106 | 7 | 42 | 0 | 0 | 0 | 0 | 0 | 60 | 2 |
| Prince Edward Island./ Île-du-Prince-Édouard | 51 | 0 | 0 | 71 | 1 | 51 | 0 | 0 | 1 | 0 | 0 | 51 | 1 |
| Nova Scotia/Nouvelle-Écosse | 247 | 0 | 0 | 247 | 0 | 247 | 17 | 0 | 1 | 0 | 0 | 247 | 9 |
| New Brunswick/Nouveau-Brunswick | 323 | 0 | 0 | 284 | 6 | 268 | 5 | 1 | 1 | 0 | 0 | 267 | 11 |
| Atlantic/Atlantique | 821 | 0 | 0 | 708 | 14 | 608 | 22 | 1 | 3 | 0 | 0 | 625 | 23 |
| Région Nord-Est | 167 | 0 | 0 | 104 | 6 | 0 | 0 | 0 | 0 | 0 | 0 | 0 | 0 |
| Québec-Chaudière-Appalaches | 617 | 0 | 0 | 870 | 9 | 583 | 7 | 1 | 2 | 0 | 0 | 808 | 40 |
| Centre-du-Québec | 262 | 1 | 0 | 220 | 13 | 91 | 1 | 0 | 1 | 0 | 0 | 99 | 8 |
| Montréal-Laval | 2371 | 3 | 1 | 3358 | 378 | 2764 | 44 | 36 | 29 | 3 | 0 | 2927 | 81 |
| Ouest du Québec | 118 | 4 | 0 | 118 | 27 | 0 | 0 | 0 | 0 | 0 | 0 | 0 | 0 |
| Montréal | 92 | 0 | 0 | 100 | 23 | 0 | 0 | 0 | 0 | 0 | 0 | 0 | 0 |
| Province of/de Québec | 3627 | 8 | 1 | 4770 | 456 | 3438 | 52 | 37 | 32 | 3 | 0 | 3834 | 129 |
| Ottawa P.H.L. | 53 | 0 | 0 | 21 | 0 | 0 | 0 | 0 | 0 | 0 | 0 | 0 | 0 |
| CHEO/HEEO - Ottawa | 113 | 1 | 0 | 113 | 3 | 113 | 2 | 0 | 0 | 0 | 0 | 113 | 1 |
| Kingston | 268 | 0 | 0 | 268 | 3 | 268 | 8 | 8 | 0 | 0 | 0 | 268 | 0 |
| Toronto Medical Laboratory | 431 | 0 | 0 | 431 | 5 | 431 | 4 | 0 | 0 | 0 | 0 | 433 | 5 |
| C.P.H.L. - Toronto | 2424 | 2 | 1 | 2602 | 22 | 2258 | 80 | 45 | 6 | 0 | 0 | 2258 | 22 |
| Sick Kids' Hospital - Toronto | 507 | 2 | 0 | 874 | 46 | 1189 | 35 | 24 | 3 | 0 | 0 | 1189 | 13 |
| Sunnybrook & Women's College HSC | 131 | 0 | 0 | 131 | 2 | 131 | 0 | 2 | 5 | 0 | 0 | 131 | 0 |
| Sault Ste. Marie | 57 | 0 | 0 | 57 | 2 | 57 | 5 | 0 | 0 | 0 | 0 | 57 | 1 |
| Timmins | 96 | 0 | 0 | 96 | 0 | 86 | 6 | 0 | 4 | 0 | 0 | 96 | 4 |
| St.Joseph's-London | 177 | 0 | 0 | 177 | 0 | 177 | 1 | 3 | 1 | 0 | 6 | 177 | 2 |
| London P.H.L. | 778 | 2 | 0 | 778 | 1 | 778 | 39 | 9 | 1 | 0 | 0 | 778 | 6 |
| Orillia P.H.L. | 316 | 1 | 0 | 316 | 0 | 316 | 21 | 11 | 0 | 0 | 0 | 316 | 9 |
| Windsor | 138 | 0 | 0 | 137 | 0 | 83 | 1 | 0 | 1 | 0 | 0 | 77 | 1 |
| Thunder Bay | 69 | 0 | 0 | 55 | 0 | 69 | 2 | 0 | 0 | 0 | 0 | 69 | 3 |
| Sudbury P.H.L. | 90 | 0 | 0 | 90 | 0 | 90 | 2 | 3 | 0 | 0 | 0 | 99 | 0 |
| Hamilton P.H.L. | 77 | 0 | 0 | 78 | 0 | 8 | 2 | 0 | 0 | 0 | 0 | 8 | 0 |
| Peterborough P.H.L. | 232 | 1 | 0 | 232 | 1 | 232 | 16 | 11 | 0 | 0 | 0 | 232 | 1 |
| Province of/de l'Ontario | 5957 | 9 | 1 | 6456 | 85 | 6286 | 224 | 116 | 21 | 0 | 6 | 6301 | 68 |
| Manitoba | 734 | 1 | 0 | 782 | 7 | 719 | 8 | 0 | 0 | 0 | 0 | 719 | 19 |
| Regina | 1443 | 13 | 2 | 1443 | 0 | 1443 | 65 | 0 | 1 | 0 | 0 | 1443 | 67 |
| Saskatoon | 301 | 0 | 0 | 243 | 0 | 301 | 0 | 0 | 0 | 0 | 8 | 301 | 8 |
| Province of/de la Saskatchewan | 1744 | 13 | 2 | 1686 | 0 | 1744 | 65 | 0 | 1 | 0 | 8 | 1744 | 75 |
| Calgary | 1350 | 1 | 96 | 1252 | 18 | 1234 | 0 | 0 | 0 | 0 | 31 | 1107 | 56 |
| Edmonton | 3104 | 0 | 19 | 3213 | 88 | 3001 | 9 | 0 | 0 | 0 | 82 | 1715 | 86 |
| Province of/de l'Alberta | 4454 | 1 | 115 | 4465 | 106 | 4235 | 9 | 0 | 0 | 0 | 113 | 2822 | 142 |
| Prairies | 6932 | 15 | 117 | 6933 | 113 | 6698 | 82 | 0 | 1 | 0 | 121 | 5285 | 236 |
| British Columbia/Colombie-Britannique | 1292 | 45 | 3 | 1292 | 3 | 1292 | 14 | 1 | 0 | 0 | 0 | 1292 | 10 |
| CANADA | 18629 | 77 | 122 | 20159 | 671 | 18322 | 394 | 155 | 57 | 3 | 127 | 17337 | 466 |

Also available at: <http://www.phac-aspc.gc.ca/bid-bmi/dsd-dsm/rvdi-divr/index.html>

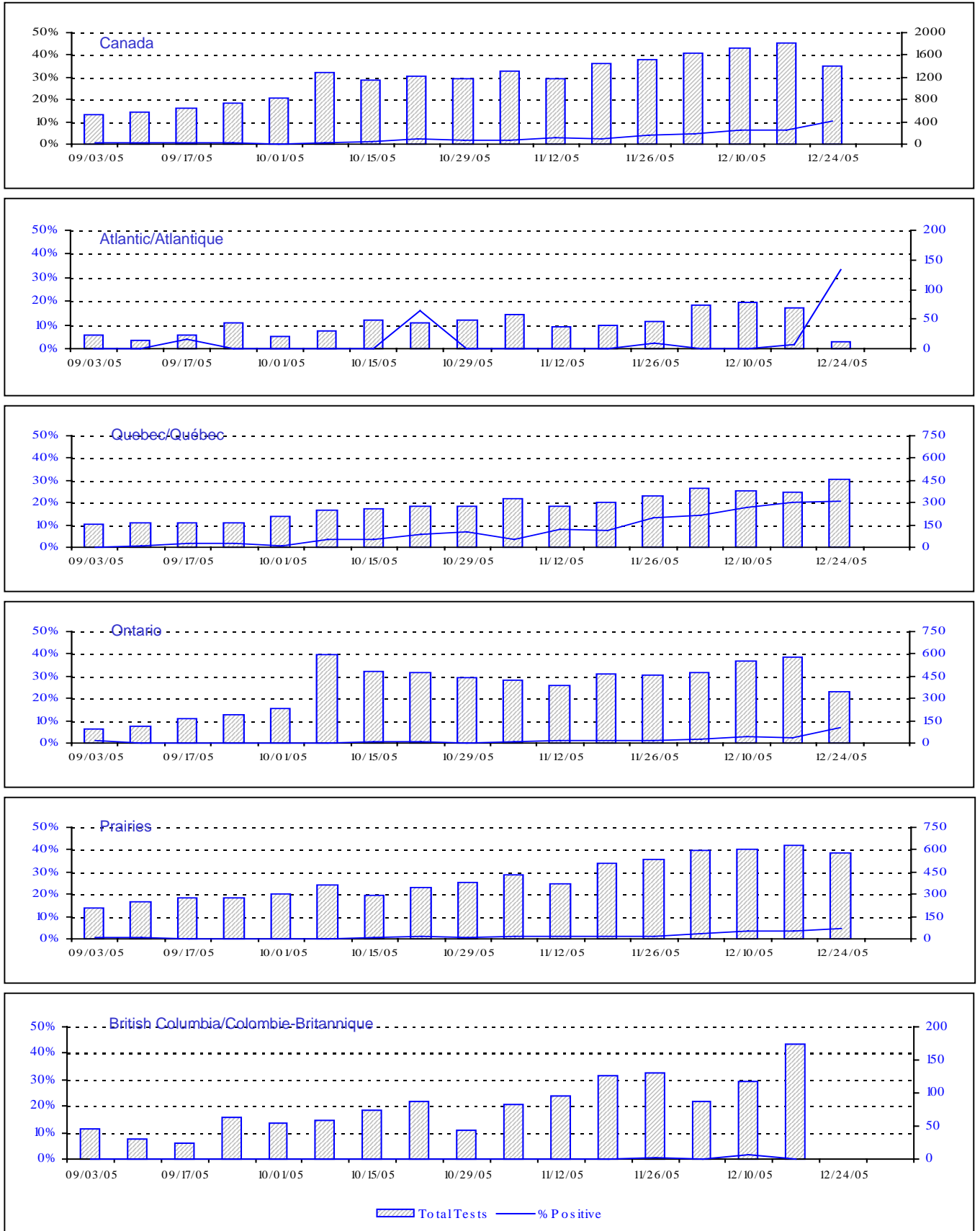
Aussi disponible sur le site: http://www.phac-aspc.gc.ca/bid-bmi/dsd-dsm/rvdi-divr/index_f.html

Positive Influenza Tests (%) in Canada by Region by Week of Report

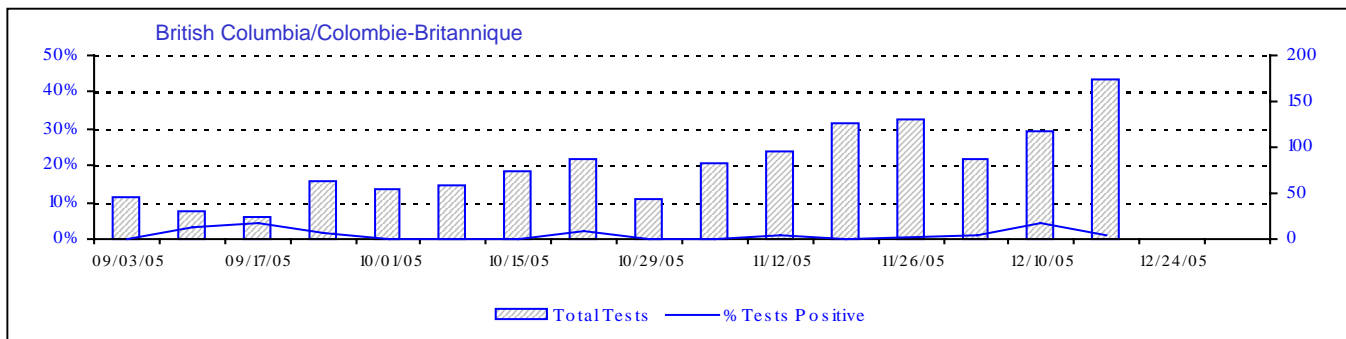
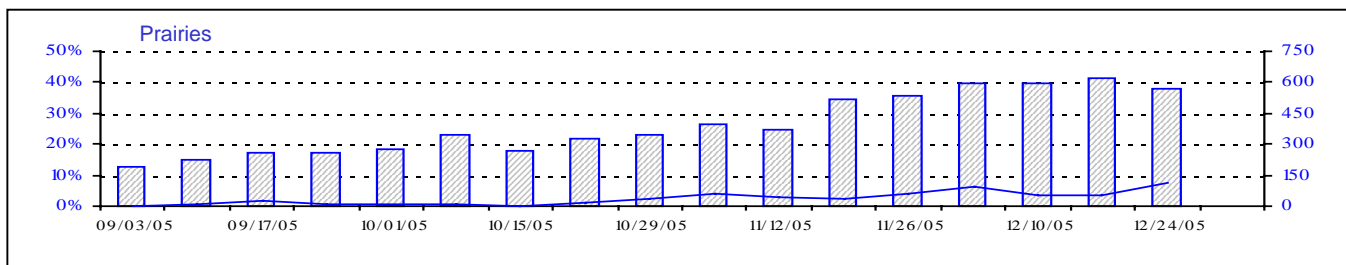
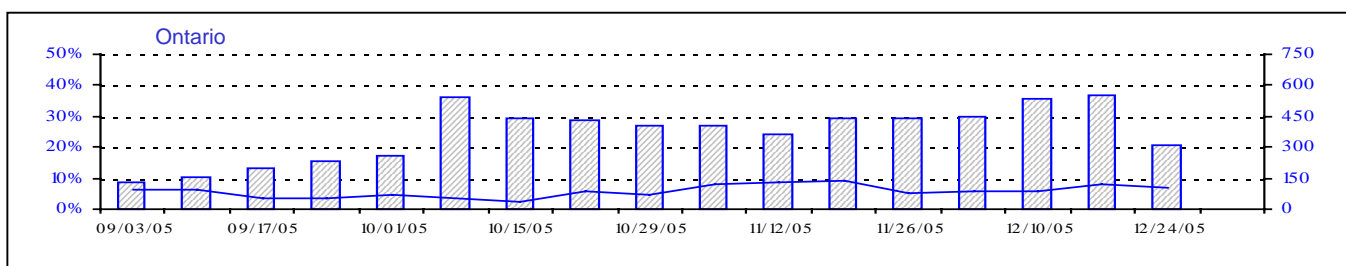
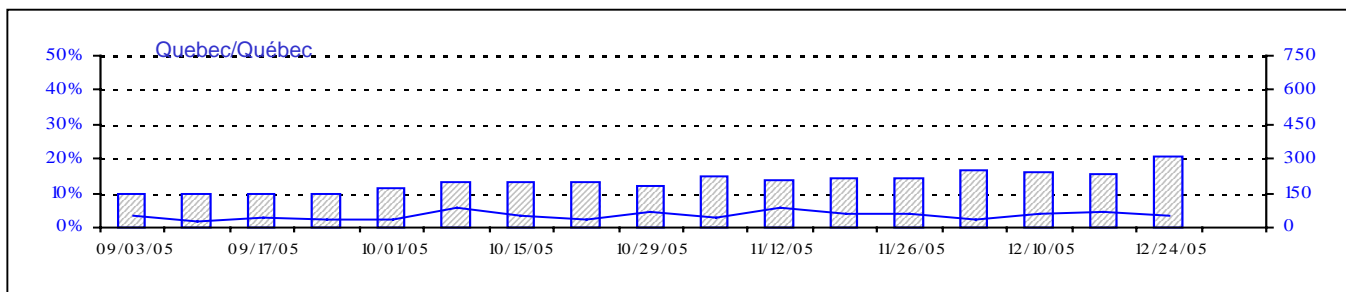
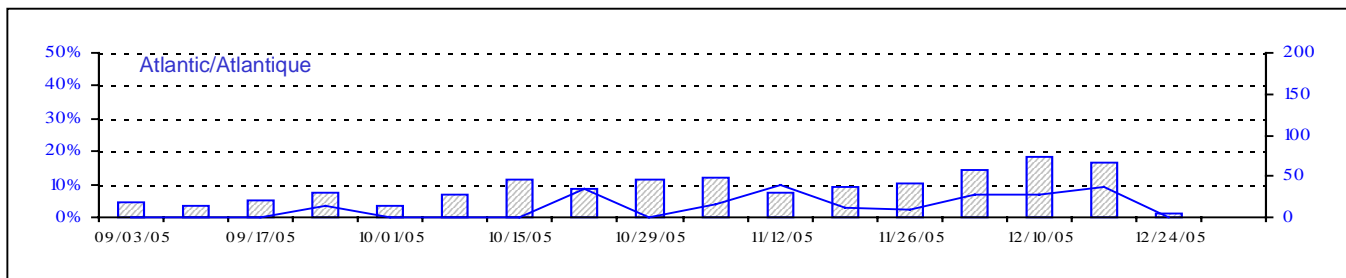
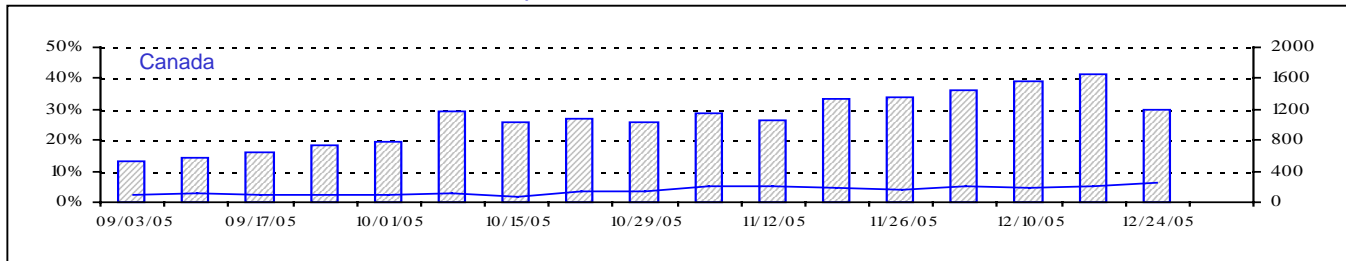
Détection du virus grippal au Canada, tests positifs (%) par région par semaine de déclaration



Positive RSV Tests (%) in Canada by Region by Week of Report
 Détection du virus respiratoire syncytial au Canada, tests positifs (%) par région
 par semaine de déclaration



Positive Parainfluenza Tests (%) in Canada by Region by Week of Report
 Détection du virus parainfluenza au Canada, tests positifs (%) par région
 par semaine de déclaration



Total Tests Total

▨ Total Tests — % Tests Positive

Positive Adenovirus Tests (%) in Canada by Region by Week of Report

Détection des adénovirus au Canada, tests positifs (%) par région par semaine de déclaration

