

Table 1/Tableau 1

Respiratory Virus Detections/Isolations for the week ending January 22, 2005 (Reporting Week 200503)  
 Détection/isolement de virus des voies respiratoires pour la semaine se terminant le 22 janvier 2005 (Code hebdomadaire 200503)

Reporting Laboratory Laboratoire rapporteur	Flu/Grippe Test	Flu/Grippe A Pos.	Flu/Grippe B Pos.	R.S.V. Test	R.S.V. Pos.	PIV Test	PIV 1 Pos.	PIV 2 Pos.	PIV 3 Pos.	PIV 4 Pos.	Other/Autre PIV Pos.	Adeno Test	Adeno Pos.
Nfld./T.-N.	42	22	0	11	1	1	0	0	0	0	0	1	0
P.E.I./Î.-P.-É.	7	3	0	11	1	7	0	0	0	0	0	7	0
N.S./N.-É.	85	39	0	85	1	85	1	0	0	0	0	85	0
N.B./N.-B.	101	17	0	67	0	58	0	0	1	0	0	58	3
Atlantic/Atlantique	235	81	0	174	3	151	1	0	1	0	0	151	3
Région Nord-Est	203	53	0	21	4	0	0	0	0	0	0	0	0
Québec-Chaudière-Appalaches	150	28	0	119	18	61	1	0	0	0	0	92	4
Centre-du-Québec	503	109	6	60	11	24	0	0	0	0	0	24	0
Montréal-Laval	558	129	5	307	58	195	4	0	6	1	0	195	10
Ouest du Québec	150	53	1	21	10	0	0	0	0	0	0	0	0
Montérégie	187	55	1	28	11	0	0	0	0	0	0	0	0
Province of/de Québec	1751	427	13	556	112	280	5	0	6	1	0	311	14
Ottawa P.H.L.	4	0	0	0	0	0	0	0	0	0	0	0	0
CHEO/HEEO - Ottawa	-	-	-	-	-	-	-	-	-	-	-	-	-
Kingston	-	-	-	-	-	-	-	-	-	-	-	-	-
Toronto Medical Laboratory	-	-	-	-	-	-	-	-	-	-	-	-	-
C.P.H.L. - Toronto	343	49	4	356	26	313	2	0	1	0	0	313	5
Sick Kids/Hospital - Toronto	145	16	0	145	26	145	3	0	1	0	0	145	2
Sunnybrook & Women's College HSC	22	0	0	22	1	22	0	0	0	0	0	22	0
Sault Ste. Marie	5	1	0	5	0	5	0	0	0	0	0	5	0
Timmins	27	8	0	27	0	27	0	0	0	0	0	27	0
St. Joseph's - London	32	2	0	32	4	32	0	0	0	0	0	32	0
London P.H.L.	127	31	2	127	6	127	0	0	0	1	0	127	2
Orillia P.H.L.	44	9	0	44	2	44	0	0	0	0	0	44	0
Windsor	-	-	-	-	-	-	-	-	-	-	-	-	-
Thunder Bay	8	0	0	3	0	8	0	0	0	0	0	8	0
Sudbury P.H.L.	21	1	0	21	0	21	0	0	0	0	0	21	0
Hamilton P.H.L.	49	6	0	49	1	0	0	0	0	0	0	0	0
Peterborough P.H.L.	41	7	3	41	4	41	0	0	0	0	0	41	2
Province of/de l'Ontario	868	130	9	872	70	785	5	0	2	1	0	785	11
Manitoba	153	10	0	164	18	123	0	0	0	0	0	123	2
Regina	162	42	0	162	4	162	0	0	0	0	0	162	5
Saskatoon	49	24	0	49	2	49	0	0	0	0	0	49	3
Province of/de la Saskatchewan	211	66	0	211	6	211	0	0	0	0	0	211	8
Calgary	86	16	0	86	4	86	0	0	0	0	0	70	9
Edmonton	443	49	1	379	22	228	0	0	0	0	2	228	7
Province of/de l'Alberta	529	65	1	465	26	314	0	0	0	0	2	298	16
Prairies	893	141	1	840	50	648	0	0	0	0	2	632	26
Vancouver, B.C./C.-B.	230	22	0	230	0	230	0	0	0	0	0	230	2
CANADA	3977	801	23	2672	235	2094	11	0	9	2	2	2109	56

Also available at: <http://www.phac-aspc.gc.ca/bid-bmi/dsd-dsm/rvdi-divr/index-html>

Aussi disponible sur le site: [http://www.phac-aspc.gc.ca/bid-bmi/dsd-dsm/rvdi-divr/index\\_f.html](http://www.phac-aspc.gc.ca/bid-bmi/dsd-dsm/rvdi-divr/index_f.html)

Table 2/Tableau 2

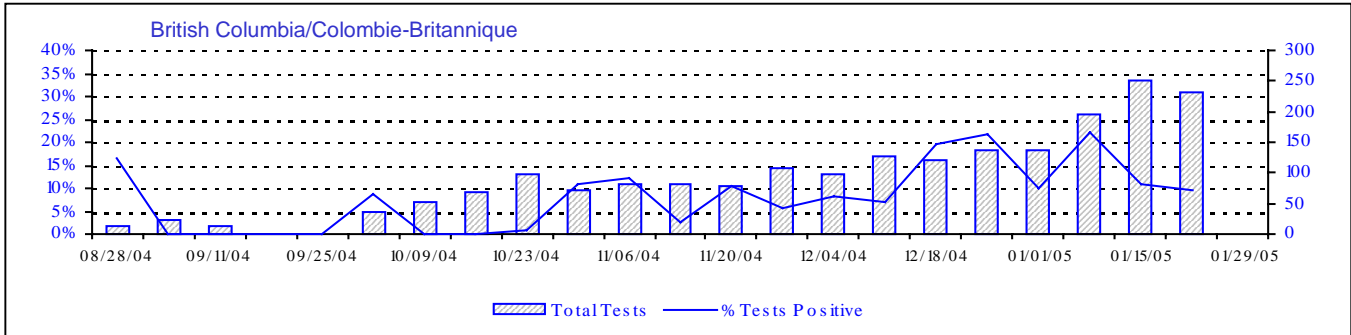
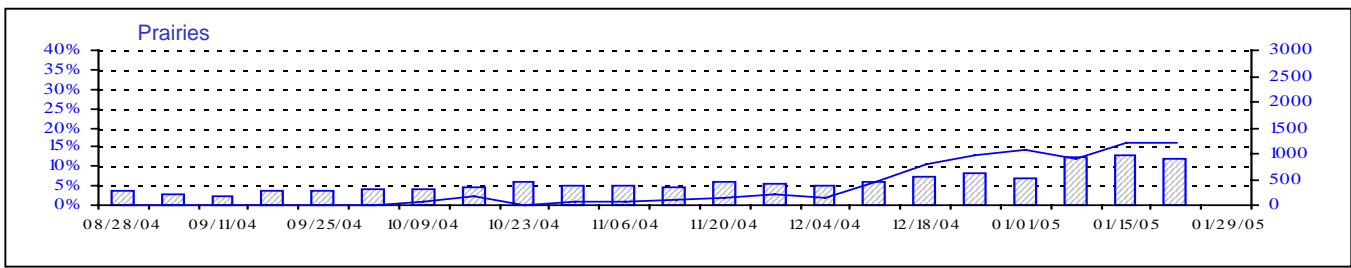
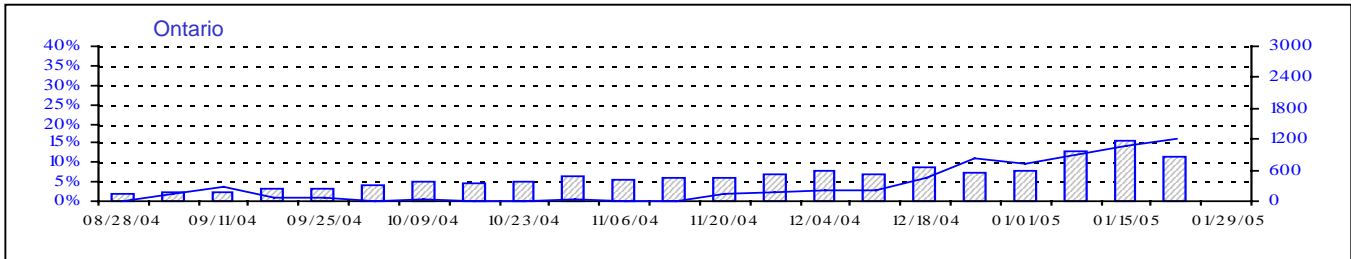
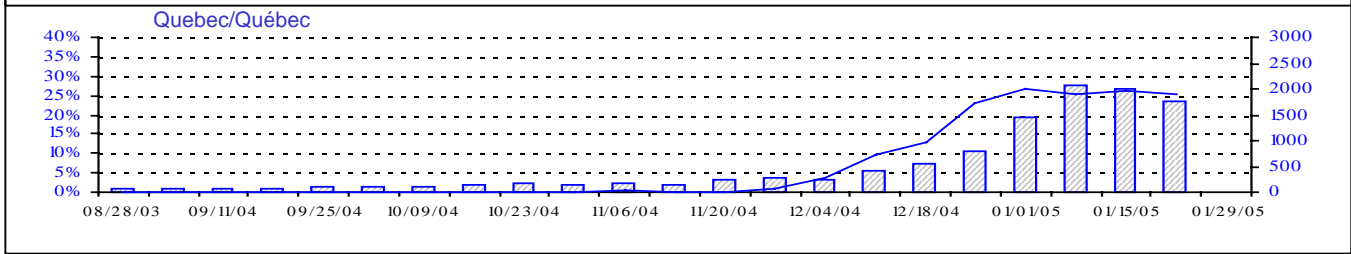
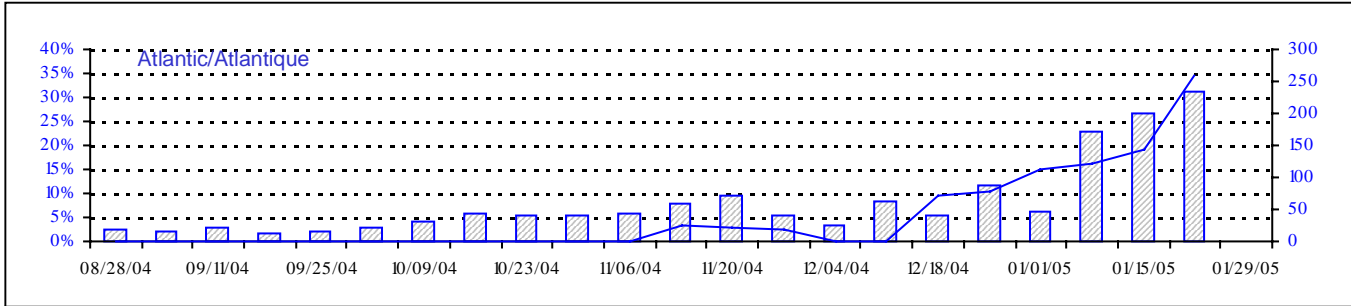
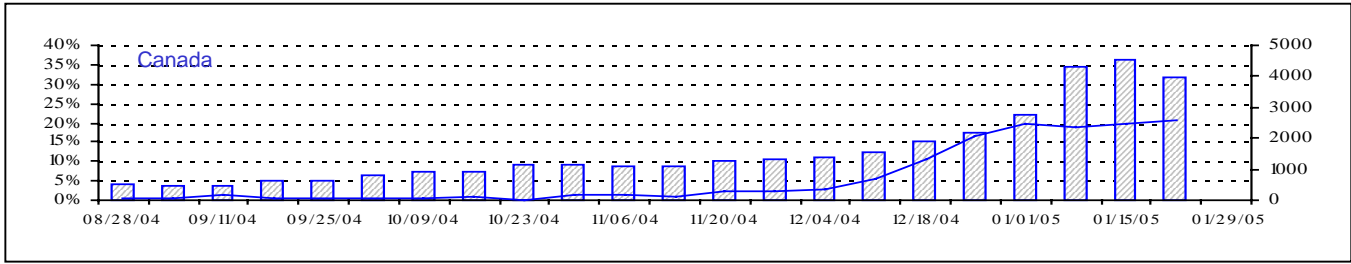
Respiratory Virus Detections/Isolations for the period August 22, 2004 - January 22, 2005  
 Détection/isolement de virus des voies respiratoires pour la période du 22 août 2004 - 22 janvier 2005  
 (Reporting Weeks 200435 -200503/Code hebdomadaire 200435-200503)

Reporting Laboratory Laboratoire rapporteur	Flu/Grippe Test	Flu/Grippe A Pos.	Flu/Grippe B Pos.	R.S.V. Test	R.S.V. Pos.	PIV Test	PIV 1 Pos.	PIV 2 Pos.	PIV 3 Pos.	PIV 4 Pos.	Other/Autre PIV Pos.	Adeno Test	Adeno Pos.
Nfld./T.-N.	241	27	0	152	7	40	0	0	0	0	0	47	0
P.E.I./Î.-P.-É.	34	9	0	58	1	34	0	0	0	0	0	34	0
N.S./N.-É.	537	107	2	537	2	537	1	0	1	0	0	537	7
N.B./N.-B.	537	27	0	389	0	344	0	1	1	0	0	344	22
Atlantic/Atlantique	1349	170	2	1136	10	955	1	1	2	0	0	962	29
Région Nord-Est	1350	369	2	255	20	0	0	0	0	0	0	0	0
Québec-Chaudière-Appalaches	2042	449	10	1506	85	1005	2	0	0	4	0	1305	91
Centre-du-Québec	2065	483	7	467	41	211	0	0	1	0	0	208	7
Montréal-Laval	4079	448	9	3973	539	3073	21	1	21	12	0	3114	172
Ouest du Québec	871	227	2	232	70	0	0	0	0	0	0	0	0
Montérégie	744	166	3	305	81	0	0	0	0	0	0	0	0
Province of/de Québec	11151	2142	33	6738	836	4289	23	1	22	16	0	4627	270
Ottawa P.H.L.	121	28	0	7	0	0	0	0	0	0	0	0	0
CHEO/HEEO - Ottawa	1022	167	1	1022	51	972	0	0	0	0	0	1022	6
Kingston	594	84	1	594	36	594	0	1	1	0	0	594	1
Toronto Medical Laboratory	839	4	0	812	13	809	0	0	0	0	0	721	0
C.P.H.L. - Toronto	3171	107	8	3480	125	2990	31	6	15	8	2	2990	47
Sick Kids' Hospital - Toronto	1658	59	0	1883	200	2086	19	2	6	0	0	2086	38
Sunnybrook & Women's College HSC	170	2	0	170	1	170	0	0	0	0	0	170	0
Sault Ste. Marie	58	5	0	58	1	58	0	1	0	0	0	58	0
Timmins	199	15	0	199	1	199	0	0	0	0	0	199	2
St.Joseph's-London	211	3	0	211	8	211	0	1	4	0	1	211	3
London P.H.L.	941	53	3	941	23	941	0	1	3	1	0	941	23
Orillia P.H.L.	398	23	1	398	4	398	0	2	0	1	0	398	14
Windsor	251	7	1	226	0	189	0	0	0	0	0	189	0
Thunder Bay	98	0	0	45	0	98	0	0	1	0	0	98	0
Sudbury P.H.L.	149	1	0	149	5	149	0	0	0	0	0	149	0
Hamilton P.H.L.	247	13	0	220	2	0	0	0	0	0	0	0	0
Peterborough P.H.L.	441	50	5	441	12	441	1	2	0	0	0	441	9
Province of/de l'Ontario	10568	621	20	10856	482	10305	51	16	30	10	3	10267	143
Manitoba	1208	24	0	1286	98	993	1	2	16	0	0	1110	41
Regina	1913	148	2	1913	32	1913	0	29	1	6	1	1913	68
Saskatoon	378	47	0	323	6	378	0	0	0	0	11	378	14
Province of/de la Saskatchewan	2291	195	2	2236	38	2291	0	29	1	6	12	2291	82
Calgary	1204	108	1	1221	15	1224	0	0	0	0	19	1052	58
Edmonton	5223	360	1	4922	98	4247	0	0	0	0	43	3152	128
Province of/de l'Alberta	6427	468	2	6143	113	5471	0	0	0	0	62	4204	186
Prairies	9926	687	4	9665	249	8755	1	31	17	6	74	7605	309
Vancouver, B.C./C.-B.	2024	216	2	2024	48	2024	6	13	2	0	0	2024	20
CANADA	35018	3836	61	30419	1625	26328	82	62	73	32	77	25485	771

Also available at: <http://www.phac-aspc.gc.ca/bid-bmi/dsd-dsm/rvdi-divr/index.html>

Aussi disponible sur le site: [http://www.phac-aspc.gc.ca/bid-bmi/dsd-dsm/rvdi-divr/index\\_f.html](http://www.phac-aspc.gc.ca/bid-bmi/dsd-dsm/rvdi-divr/index_f.html)

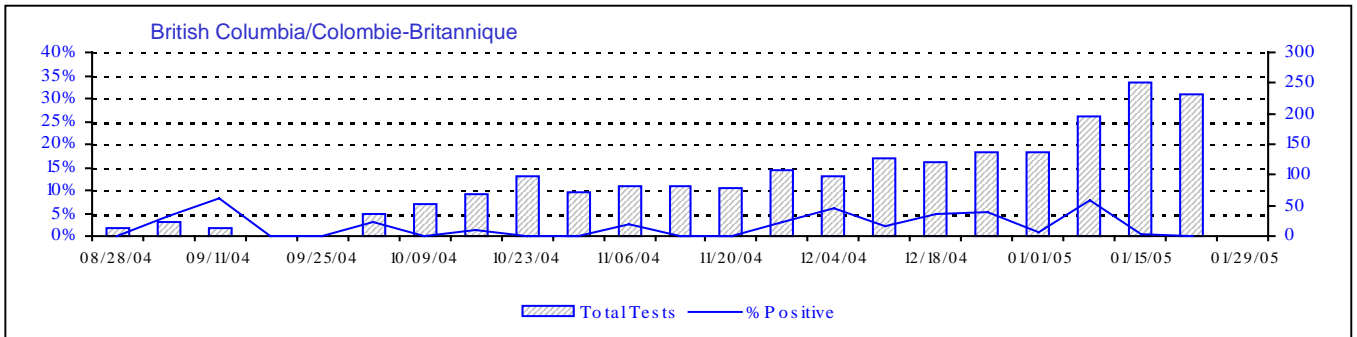
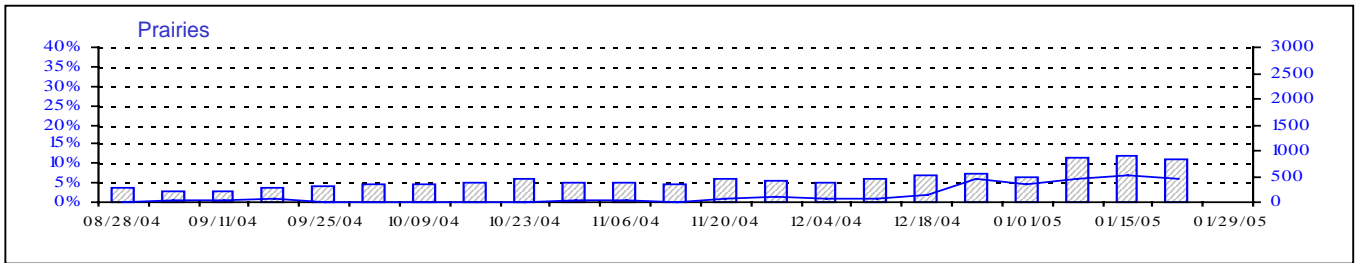
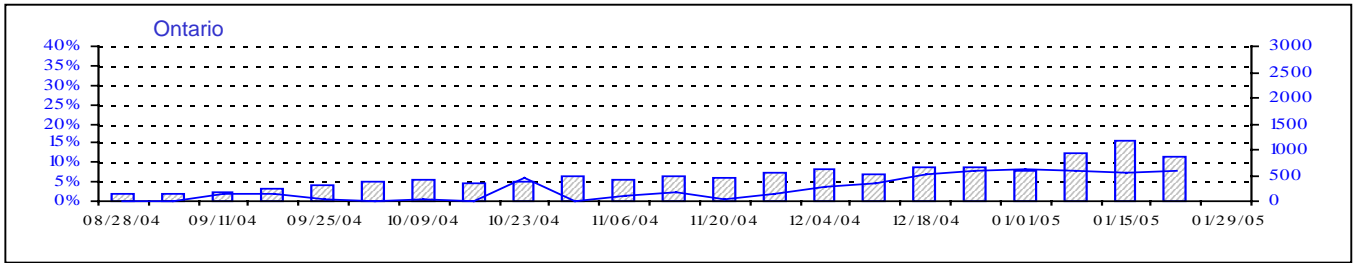
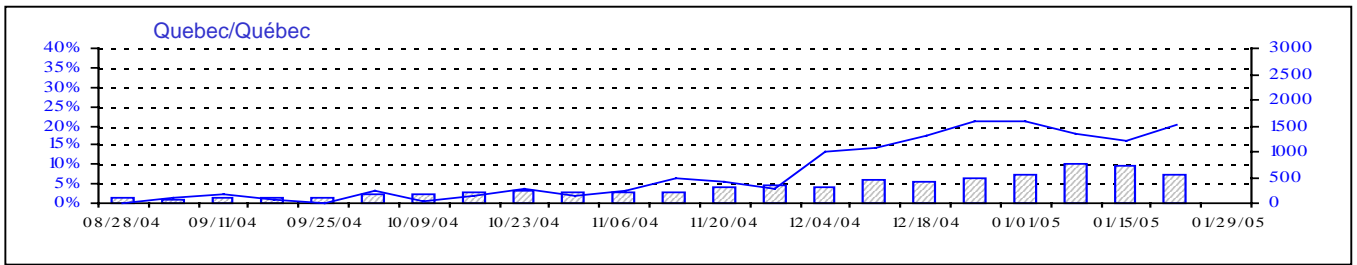
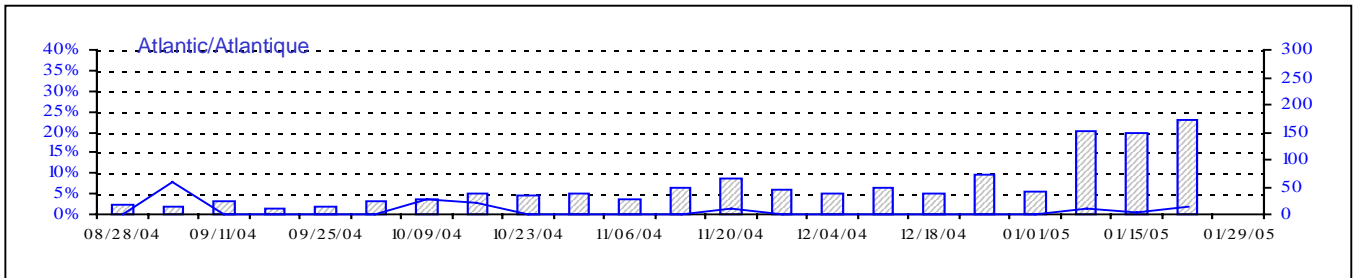
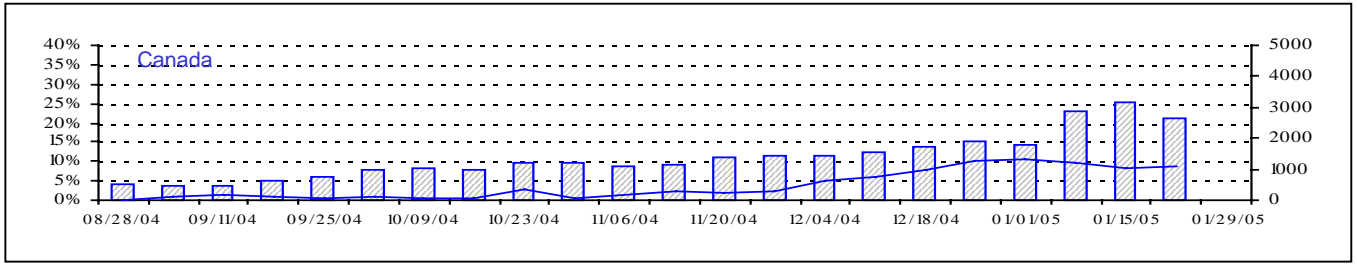
Positive Influenza Tests (%) in Canada by Region by Week of Report  
 Détection du virus grippal au Canada, tests positifs (%) par région  
 par semaine de déclaration



Total Tests Total

▨ Total Tests — % Tests Positive

Positive RSV Tests (%) in Canada by Region by Week of Report  
 Détection du virus respiratoire syncytial au Canada, tests positifs (%) par région  
 par semaine de déclaration

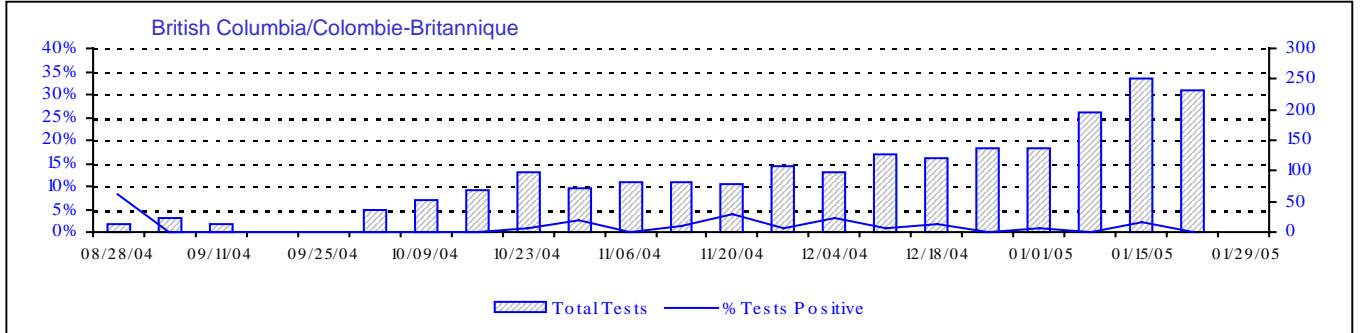
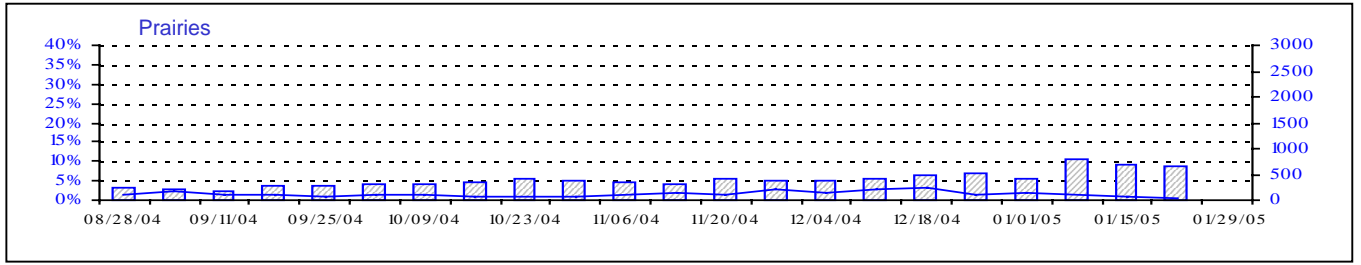
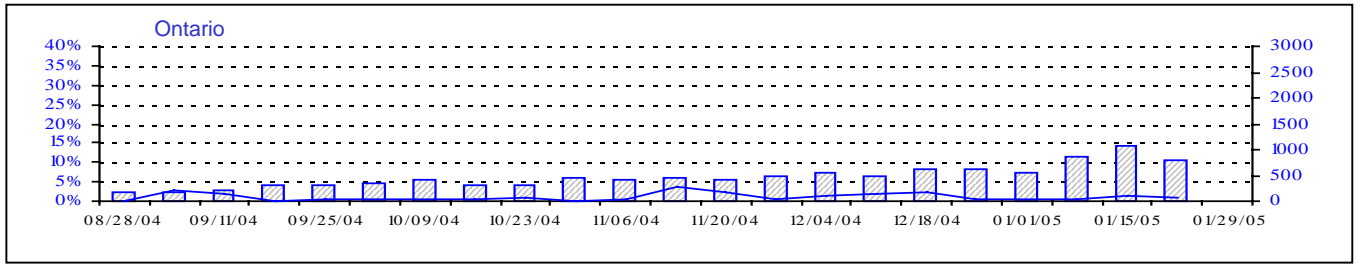
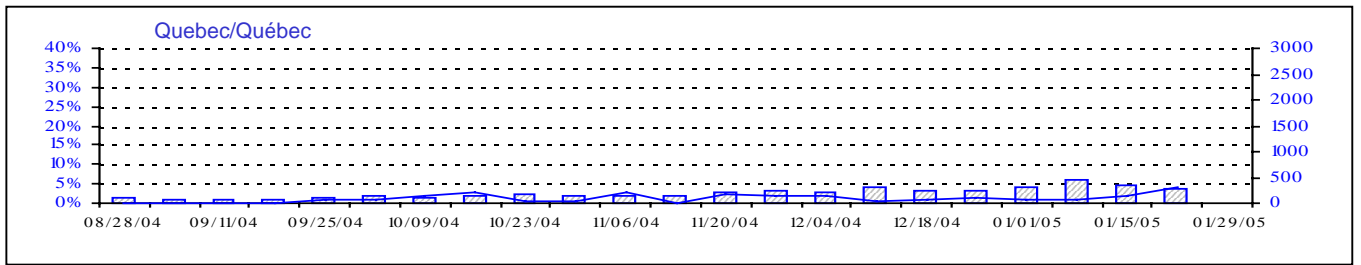
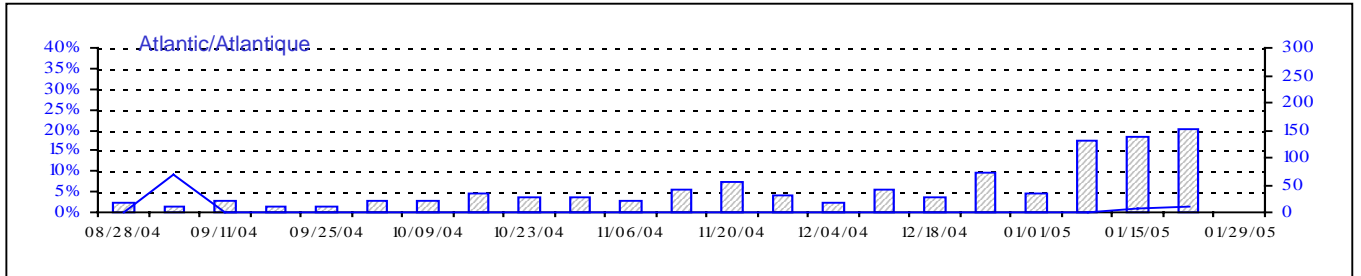
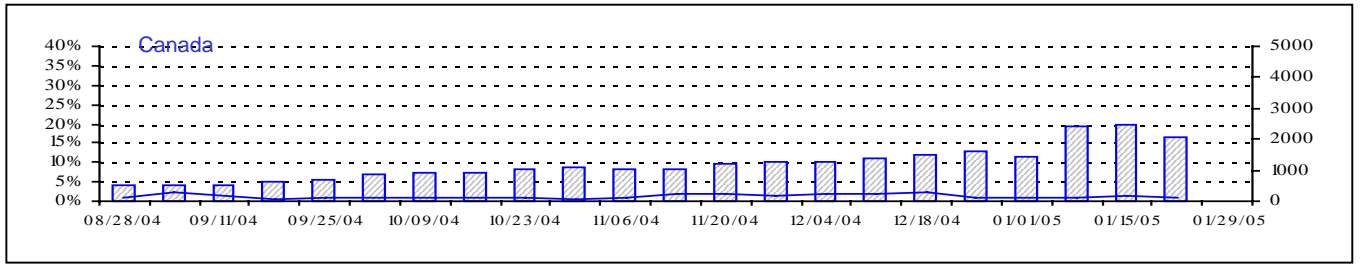


Total Tests Total

▨ Total Tests — % Positive

# Positive Parainfluenza Tests (%) in Canada by Region by Week of Report

## Détection du virus parainfluenza au Canada, tests positifs (%) par région par semaine de déclaration



Total Tests Total

▨ Total Tests    — % Tests Positive

# Positive Adenovirus Tests (%) in Canada by Region by Week of Report

## Détection des adénovirus au Canada, tests positifs (%) par région par semaine de déclaration

