

Table 1/Tableau 1

Respiratory Virus Detections/Isolations for the week ending January 29, 2005 (Reporting Week 200504)  
 Détection/isolement de virus des voies respiratoires pour la semaine se terminant le 29 janvier 2005 (Code hebdomadaire 200504)

Reporting Laboratory Laboratoire rapporteur	Flu/Grippe Test	Flu/Grippe A Pos.	Flu/Grippe B Pos.	R.S.V. Test	R.S.V. Pos.	PIV Test	PIV 1 Pos.	PIV 2 Pos.	PIV 3 Pos.	PIV 4 Pos.	Other/Autre PIV Pos.	Adeno Test	Adeno Pos.
Nfld./T.-N.	71	5	0	11	0	0	0	0	0	0	0	1	0
P.E.I./Î.-P.-É.	7	1	0	9	0	7	0	0	0	0	0	7	0
N.S./N.-É.	121	74	0	32	1	32	0	0	1	0	0	32	0
N.B./N.-B.	109	22	0	73	3	73	0	0	1	0	0	73	10
Atlantic/Atlantique	308	102	0	125	4	112	0	0	2	0	0	113	10
Région Nord-Est	192	44	0	26	8	0	0	0	0	0	0	0	0
Québec-Chaudière-Appalaches	174	17	2	123	17	75	1	0	0	0	0	105	5
Centre-du-Québec	443	106	1	108	17	60	0	0	0	0	0	60	2
Montréal-Laval	678	146	2	377	84	259	0	1	3	0	0	259	9
Ouest du Québec	177	56	1	42	18	0	0	0	0	0	0	0	0
Montérégie	217	60	1	42	11	0	0	0	0	0	0	0	0
Province of/de Québec	1881	429	7	718	155	394	1	1	3	0	0	424	16
Ottawa P.H.L.	10	2	0	0	0	0	0	0	0	0	0	0	0
CHEO/HEEO - Ottawa	113	13	1	113	28	113	0	0	0	0	0	113	2
Kingston	54	5	0	54	9	54	0	0	1	0	0	54	0
Toronto Medical Laboratory *	95	14	0	95	1	95	0	0	0	0	0	95	1
C.P.H.L. - Toronto	398	40	4	417	33	356	3	1	1	1	0	356	3
Sick Kids/Hospital - Toronto	171	21	0	171	36	171	1	0	0	0	0	171	2
Sunnybrook & Women's College HSC	-	-	-	-	-	-	-	-	-	-	-	-	-
Sault Ste. Marie	6	0	0	6	1	6	0	0	0	0	0	6	0
Timmins	18	2	0	18	2	18	0	0	0	0	0	18	0
St. Joseph's - London	35	2	0	35	3	35	0	0	0	0	0	35	0
London P.H.L.	125	40	1	125	14	125	0	0	1	0	0	125	0
Orillia P.H.L.	12	7	0	12	0	12	0	0	0	0	0	12	0
Windsor	-	-	-	-	-	-	-	-	-	-	-	-	-
Thunder Bay	16	2	0	11	0	16	0	0	0	0	0	16	0
Sudbury P.H.L.	34	4	1	34	0	34	1	0	0	0	0	34	0
Hamilton P.H.L.	27	3	0	27	0	0	0	0	0	0	0	0	0
Peterborough P.H.L.	98	15	1	98	4	98	1	0	0	0	0	98	0
Province of/de l'Ontario	1212	170	8	1216	131	1133	6	1	3	1	0	1133	8
Manitoba *	142	15	0	146	24	107	0	0	1	0	0	107	5
Regina	182	38	0	182	20	182	0	1	0	1	0	182	1
Saskatoon *	43	9	0	31	0	43	0	0	0	0	0	43	3
Province of/de la Saskatchewan	225	47	0	213	20	225	0	1	0	1	0	225	4
Calgary	119	39	0	119	5	119	0	0	0	0	1	109	5
Edmonton	409	40	2	341	33	309	0	0	0	0	5	209	1
Province of/de l'Alberta	528	79	2	460	38	428	0	0	0	0	6	318	6
Prairies	895	141	2	819	82	760	0	1	1	1	6	650	15
Vancouver, B.C./C.-B.	198	106	0	198	9	198	0	3	0	0	0	148	2
CANADA	4494	948	17	3076	381	2597	7	6	9	2	6	2468	51

Also available at: <http://www.phac-aspc.gc.ca/bid-bmi/dsd-dsm/rvdi-divr/index.html>

\* Toronto Medical Laboratory; Manitoba; and Saskatoon Amended

Aussi disponible sur le site: [http://www.phac-aspc.gc.ca/bid-bmi/dsd-dsm/rvdi-divr/index\\_f.html](http://www.phac-aspc.gc.ca/bid-bmi/dsd-dsm/rvdi-divr/index_f.html)

Table 2/Tableau 2

Respiratory Virus Detections/Isolations for the period August 22, 2004 - January 29, 2005  
 Détection/isolement de virus des voies respiratoires pour la période du 22 août 2004 - 29 janvier 2005  
 (Reporting Weeks 200435 -200504/Code hebdomadaire 200435-200504)

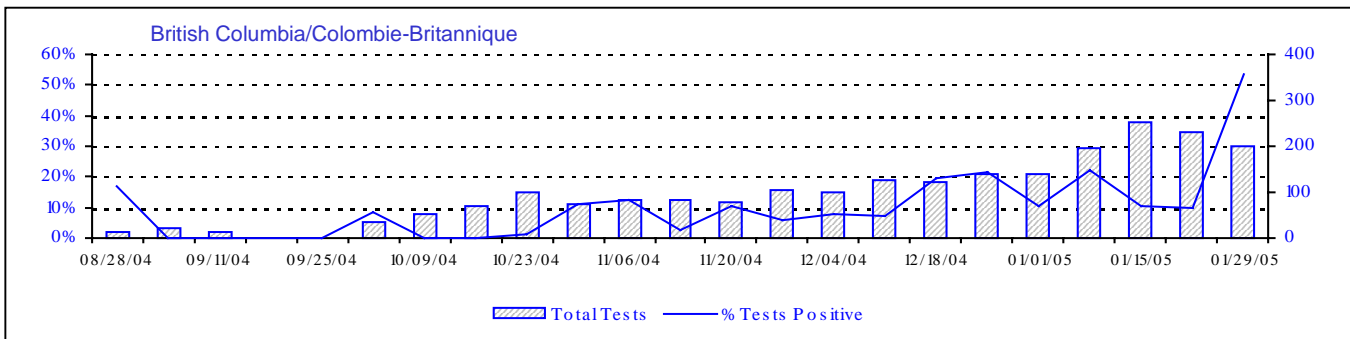
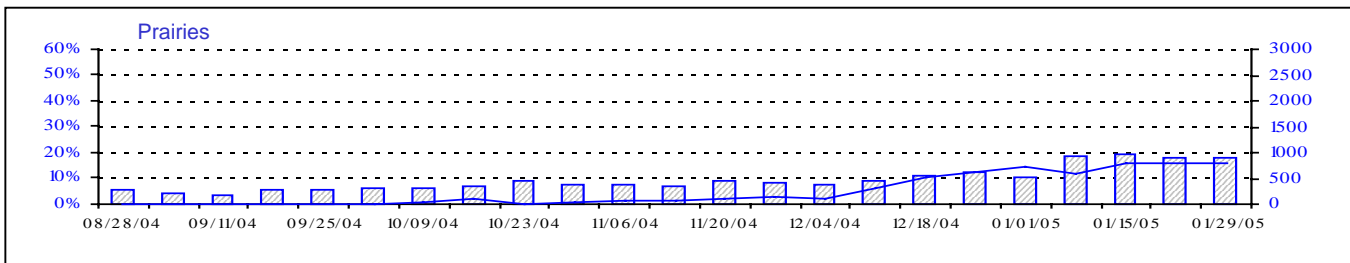
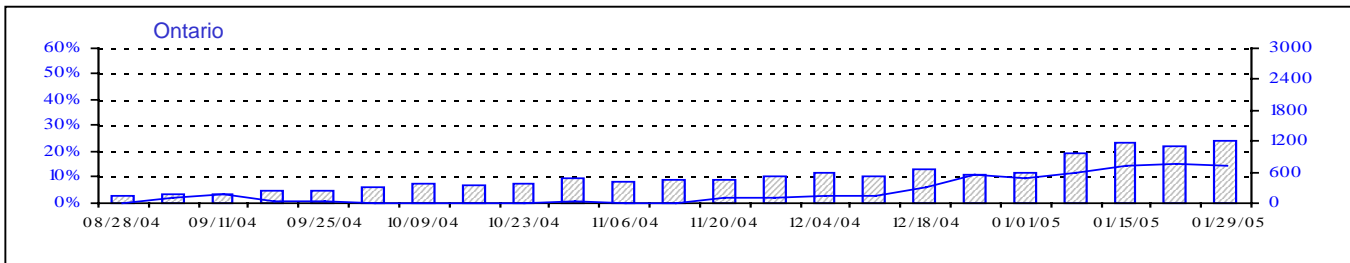
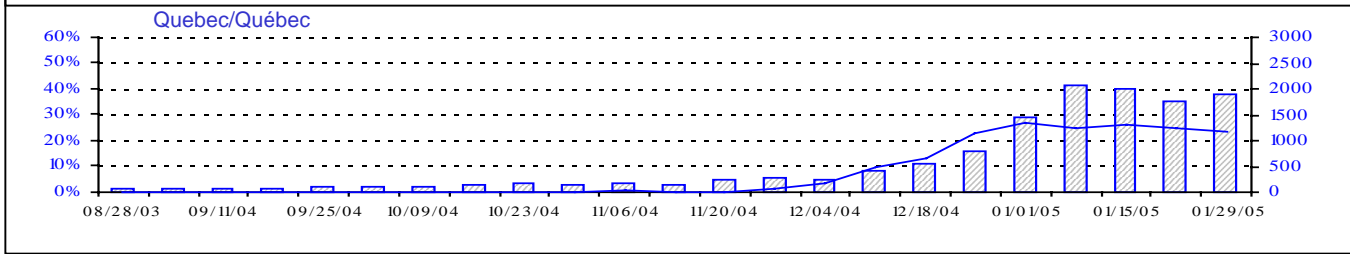
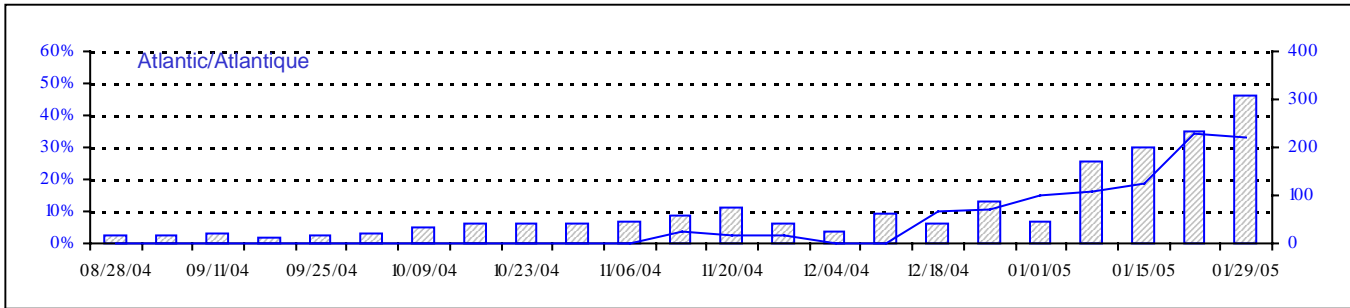
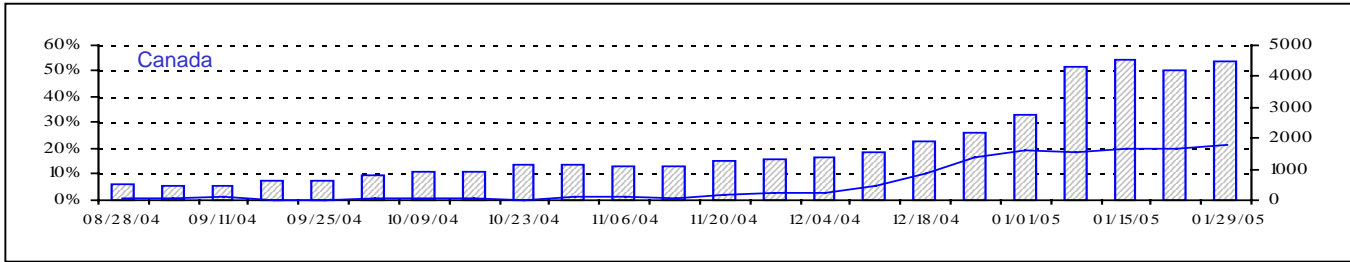
Reporting Laboratory Laboratoire rapporteur	Flu/Grippe Test	Flu/Grippe A Pos.	Flu/Grippe B Pos.	R.S.V. Test	R.S.V. Pos.	PIV Test	PIV 1 Pos.	PIV 2 Pos.	PIV 3 Pos.	PIV 4 Pos.	Other/Autre PIV Pos.	Adeno Test	Adeno Pos.
Nfld./T.-N.	312	32	0	163	7	40	0	0	0	0	0	48	0
P.E.I./Î.-P.-É.	41	10	0	67	1	41	0	0	0	0	0	41	0
N.S./N.-É.	658	181	2	569	3	569	1	0	2	0	0	569	7
N.B./N.-B.	646	49	0	462	3	417	0	1	2	0	0	417	32
Atlantic/Atlantique	1657	272	2	1261	14	1067	1	1	4	0	0	1075	39
Région Nord-Est	1542	413	2	281	28	0	0	0	0	0	0	0	0
Québec-Chaudière-Appalaches	2216	466	12	1629	102	1080	3	0	0	4	0	1410	96
Centre-du-Québec	2508	589	8	575	58	271	0	0	1	0	0	268	9
Montréal-Laval	4757	594	11	4350	623	3332	21	2	24	12	0	3373	181
Ouest du Québec	1048	283	3	274	88	0	0	0	0	0	0	0	0
Montréal	961	226	4	347	92	0	0	0	0	0	0	0	0
Province of/de Québec	13032	2571	40	7456	991	4683	24	2	25	16	0	5051	286
Ottawa P.H.L.	131	30	0	7	0	0	0	0	0	0	0	0	0
CHEO/HEEO - Ottawa	1259	193	2	1259	90	1209	0	0	0	0	0	1859	9
Kingston	690	96	1	690	51	690	0	1	2	0	0	690	3
Toronto Medical Laboratory *	978	26	0	951	14	948	0	0	0	0	0	860	1
C.P.H.L. - Toronto	3569	147	12	3897	158	3346	34	7	16	9	2	3346	50
Sick Kids' Hospital - Toronto	1829	80	0	2054	236	2257	20	2	6	0	0	2257	40
Sunnybrook & Women's College HSC	170	2	0	170	1	170	0	0	0	0	0	170	0
Sault Ste. Marie	64	5	0	64	2	64	0	1	0	0	0	64	0
Timmins	217	17	0	217	3	217	0	0	0	0	0	217	2
St.Joseph's-London	246	5	0	246	11	246	0	1	4	0	1	246	3
London P.H.L.	1066	93	4	1066	37	1066	0	1	4	1	0	1066	23
Orillia P.H.L.	410	30	1	410	4	410	0	2	0	1	0	410	14
Windsor	261	7	1	236	0	199	0	1	0	0	0	199	0
Thunder Bay	114	2	0	56	0	114	0	0	1	0	0	114	0
Sudbury P.H.L.	183	5	1	183	5	183	1	0	0	0	0	183	0
Hamilton P.H.L.	274	16	0	247	2	0	0	0	0	0	0	0	0
Peterborough P.H.L.	539	65	6	539	16	539	2	2	0	0	0	539	9
Province of/de l'Ontario	12000	819	28	12292	630	11658	57	18	33	11	3	12220	154
Manitoba *	1350	39	0	1432	122	1100	1	2	17	0	0	1217	46
Regina	2095	186	2	2095	52	2095	0	30	1	7	1	2095	69
Saskatoon *	421	56	0	354	6	421	0	0	0	0	11	421	17
Province of/de la Saskatchewan	2516	242	2	2449	58	2516	0	30	1	7	12	2516	86
Calgary	1323	147	1	1340	20	1343	0	0	0	0	20	1161	63
Edmonton	5632	400	3	5263	131	4556	0	0	0	0	48	3361	129
Province of/de l'Alberta	6955	547	4	6603	151	5899	0	0	0	0	68	4522	192
Prairies	10821	828	6	10484	331	9515	1	32	18	7	80	8255	324
Vancouver, B.C./C.-B.	2222	322	2	2222	57	2222	6	16	2	0	0	2172	22
CANADA	39732	4812	78	33715	2023	29145	89	69	82	34	83	28773	825

Also available at: <http://www.phac-aspc.gc.ca/bid-bmi/dsd-dsm/rvdi-divr/index.html>

\* Toronto Medical Laboratory; Manitoba; and Saskatoon Amended

Aussi disponible sur le site: [http://www.phac-aspc.gc.ca/bid-bmi/dsd-dsm/rvdi-divr/index\\_f.html](http://www.phac-aspc.gc.ca/bid-bmi/dsd-dsm/rvdi-divr/index_f.html)

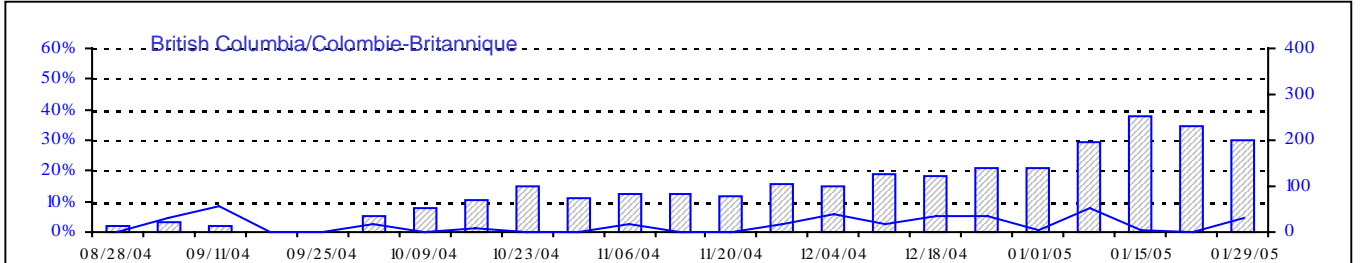
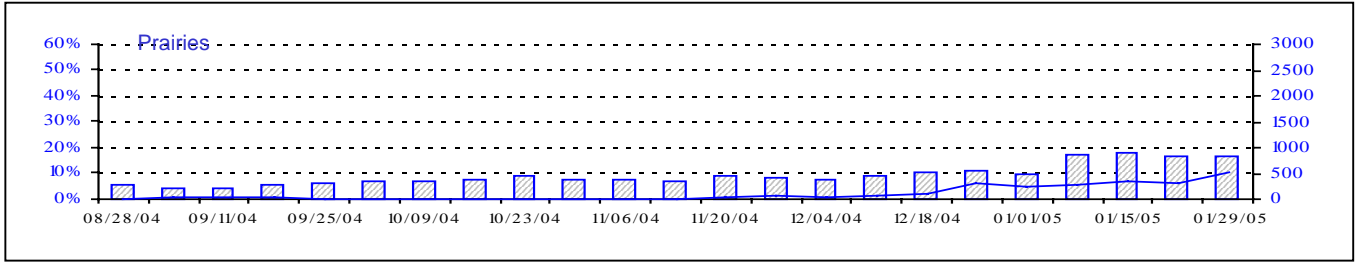
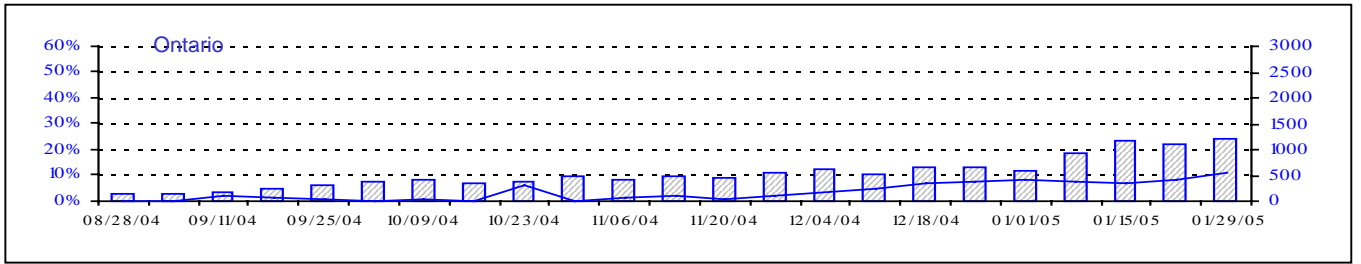
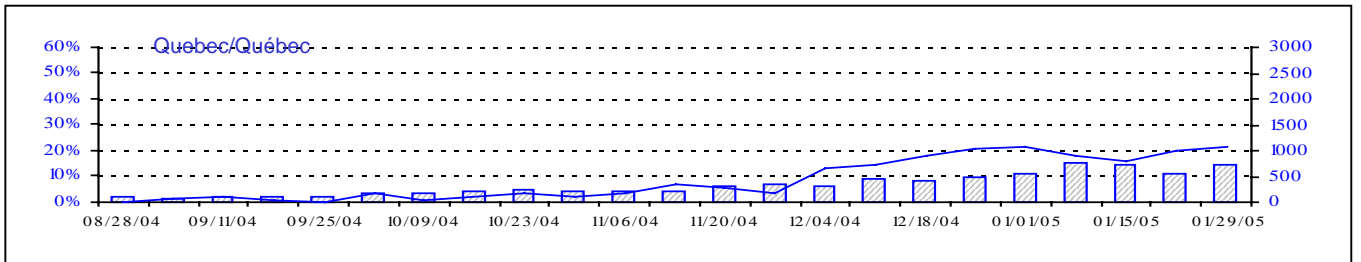
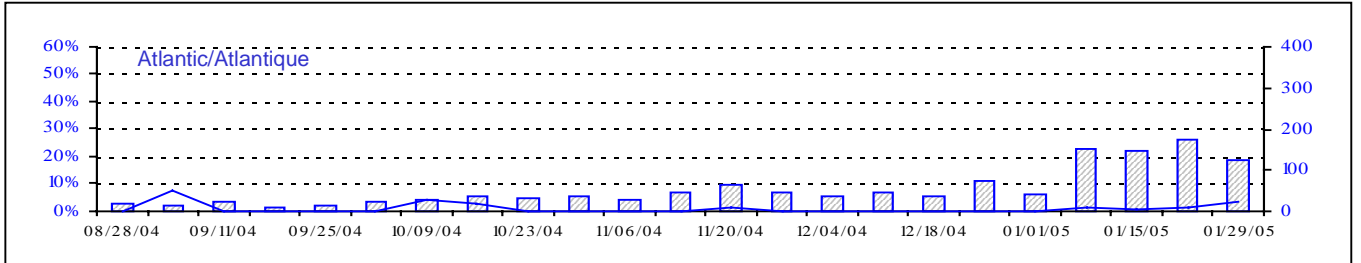
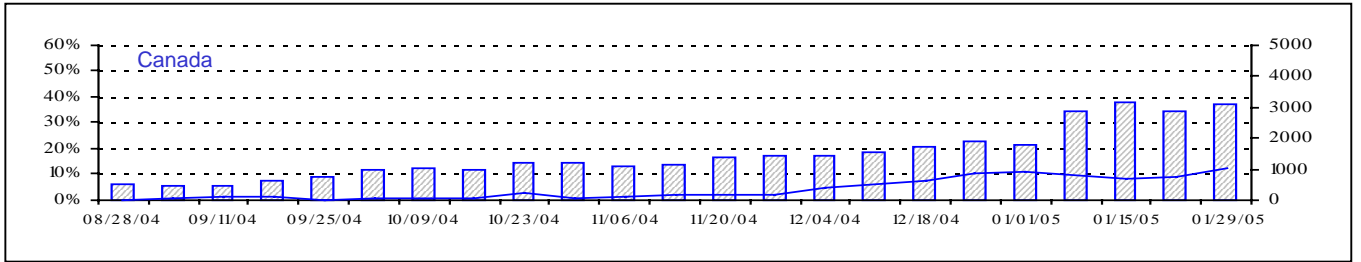
Positive Influenza Tests (%) in Canada by Region by Week of Report  
 Détection du virus grippal au Canada, tests positifs (%) par région  
 par semaine de déclaration



Total Tests Total

▨ Total Tests — % Tests Positive

Positive RSV Tests (%) in Canada by Region by Week of Report  
 Détection du virus respiratoire syncytial au Canada, tests positifs (%) par région  
 par semaine de déclaration

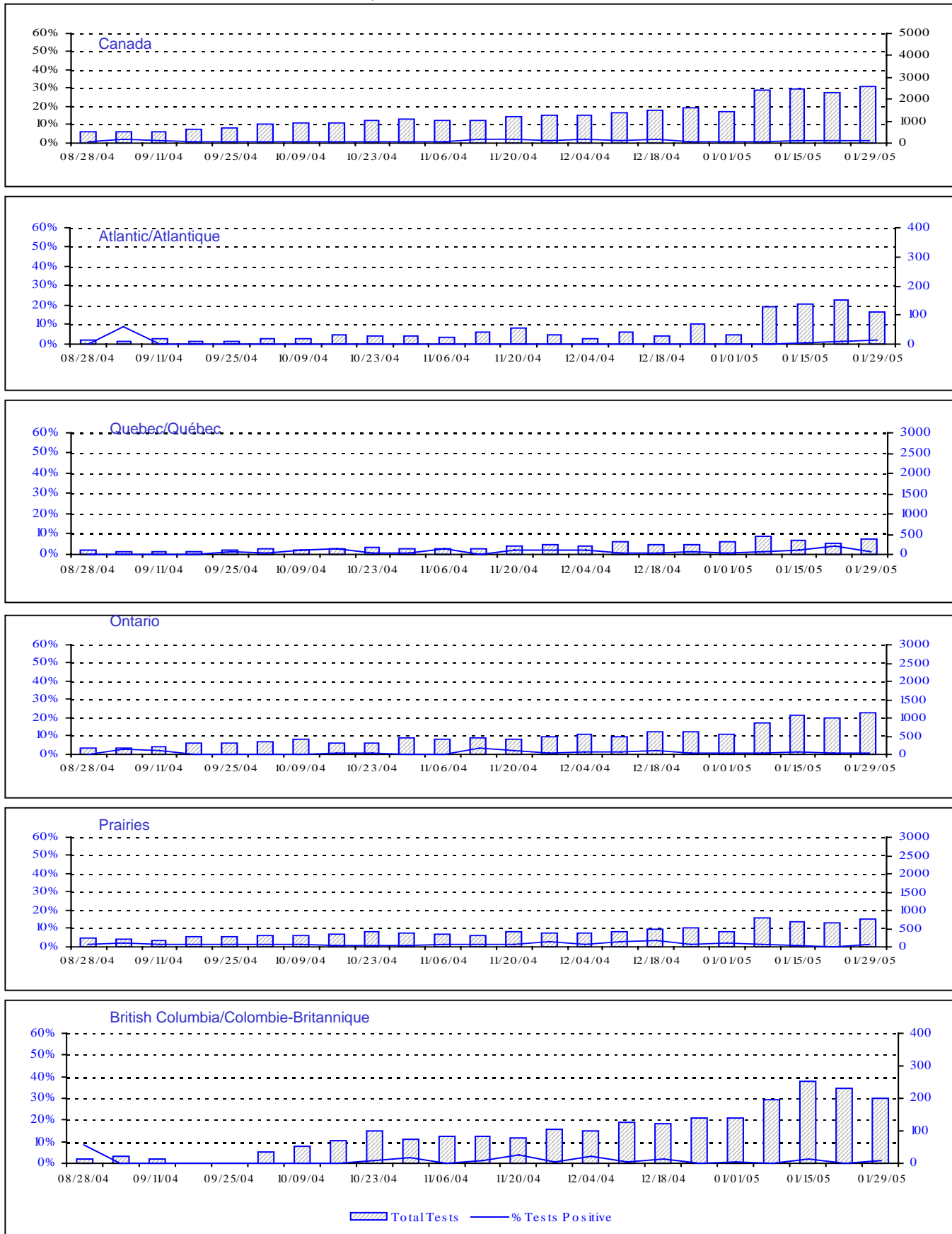


▨ Total Tests — % Positive

Total Tests Total

# Positive Parainfluenza Tests (%) in Canada by Region by Week of Report

## Détection du virus parainfluenza au Canada, tests positifs (%) par région par semaine de déclaration



# Positive Adenovirus Tests (%) in Canada by Region by Week of Report

## Détection des adénovirus au Canada, tests positifs (%) par région par semaine de déclaration

