

Table 1/Tableau 1

Respiratory Virus Detections/Isolations for the week ending March 12, 2005 (Reporting Week 200510)  
 Détection/isolément de virus des voies respiratoires pour la semaine se terminant le 12 mars 2005 (Code hebdomadaire 200510)

Reporting Laboratory Laboratoire rapporteur	Flu/Grippe Test	Flu/Grippe A Pos.	Flu/Grippe B Pos.	R.S.V. Test	R.S.V. Pos.	PIV Test	PIV 1 Pos.	PIV 2 Pos.	PIV 3 Pos.	PIV 4 Pos.	Other/Autre PIV Pos.	Adeno Test	Adeno Pos.
Nfld./T.-N.	72	18	0	14	2	0	0	0	0	0	0	1	0
P.E.I./Î.-P.-É.	4	4	0	9	1	4	0	0	0	0	0	4	0
N.S./N.-É.	-	-	-	-	-	-	-	-	-	-	-	-	-
N.B./N.-B.	188	34	5	195	7	188	0	0	1	0	0	192	2
Atlantic/Atlantique	264	56	5	218	10	192	0	0	1	0	0	197	2
Région Nord-Est	56	2	0	32	22	0	0	0	0	0	0	0	0
Québec-Chaudière-Appalaches	104	0	1	93	31	23	0	0	1	1	0	55	4
Centre-du-Québec	184	4	10	94	40	22	0	0	0	0	0	22	1
Montréal-Laval	339	12	10	250	46	177	0	0	7	0	0	177	9
Ouest du Québec	43	1	3	40	19	0	0	0	0	0	0	0	0
Montérégie	47	4	2	31	11	0	0	0	0	0	0	0	0
Province of/de Québec	773	23	26	540	169	222	0	0	8	1	0	254	14
Ottawa P.H.L.	3	1	1	0	0	0	0	0	0	0	0	0	0
CHEO/HEEO - Ottawa	-	-	-	-	-	-	-	-	-	-	-	-	-
Kingston	-	-	-	-	-	-	-	-	-	-	-	-	-
Toronto Medical Laboratory	98	5	5	98	8	98	0	0	0	0	0	98	0
C.P.H.L. - Toronto	674	123	50	677	19	623	7	0	1	1	0	623	9
Sick Kids/Hospital - Toronto	192	4	18	192	23	192	0	0	0	0	0	192	2
Sunnybrook & Women's College HSC	28	2	2	28	0	28	0	0	0	0	0	28	0
Sault Ste. Marie	50	8	1	50	8	50	0	0	0	0	0	50	0
Timmins	33	20	1	33	3	33	0	0	0	0	0	33	0
St. Joseph's - London	76	10	2	76	13	76	0	0	0	0	0	76	1
London P.H.L.	314	35	7	314	38	314	1	0	0	0	0	314	0
Orillia P.H.L.	140	11	4	140	8	140	0	0	1	0	0	140	1
Windsor	-	-	-	-	-	-	-	-	-	-	-	-	-
Thunder Bay	46	2	0	20	4	46	0	0	0	0	0	46	0
Sudbury P.H.L.	47	10	0	47	0	47	0	0	0	0	0	47	0
Hamilton P.H.L.	33	8	1	33	2	0	0	0	0	0	0	0	0
Peterborough P.H.L.	-	-	-	-	-	-	-	-	-	-	-	-	-
Province of/de l'Ontario	1734	239	92	1708	126	1647	8	0	2	1	0	1647	13
Manitoba	144	10	3	167	26	110	0	1	0	0	0	110	3
Regina	218	21	0	218	41	218	2	0	0	0	0	218	3
Saskatoon	60	0	1	52	32	60	0	0	0	0	1	60	0
Province of/de la Saskatchewan	278	21	1	270	73	278	2	0	0	0	1	278	3
Calgary	84	12	8	84	5	84	0	0	0	0	4	78	4
Edmonton	431	10	3	551	177	387	0	0	0	0	10	260	5
Province of/de l'Alberta	515	22	11	635	182	471	0	0	0	0	14	338	9
Prairies	937	53	15	1072	281	859	2	1	0	0	15	726	15
Vancouver, B.C./C.-B.	157	14	13	157	15	157	0	0	0	0	0	157	8
CANADA	3865	385	151	3695	601	3077	10	1	11	2	15	2981	52

Also available at: <http://www.phac-aspc.gc.ca/bid-bmi/dsd-dsm/rvdi-divr/index.html>

Aussi disponible sur le site: [http://www.phac-aspc.gc.ca/bid-bmi/dsd-dsm/rvdi-divr/index\\_f.html](http://www.phac-aspc.gc.ca/bid-bmi/dsd-dsm/rvdi-divr/index_f.html)

Table 2/Tableau 2

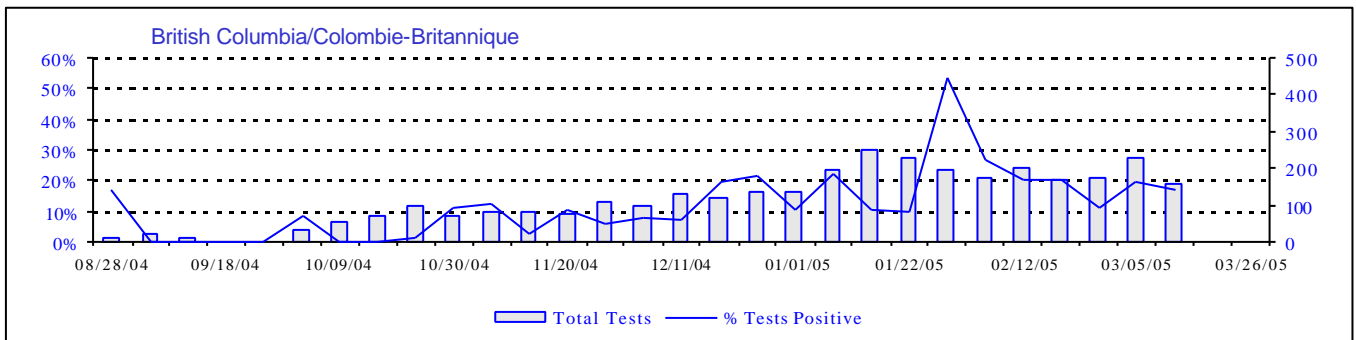
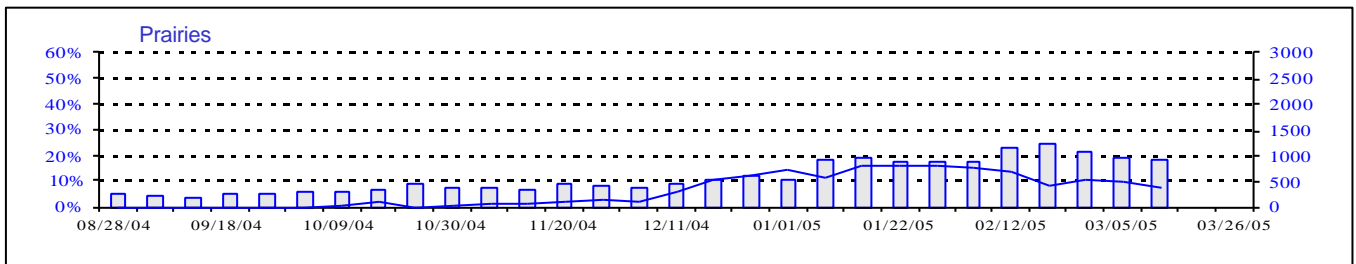
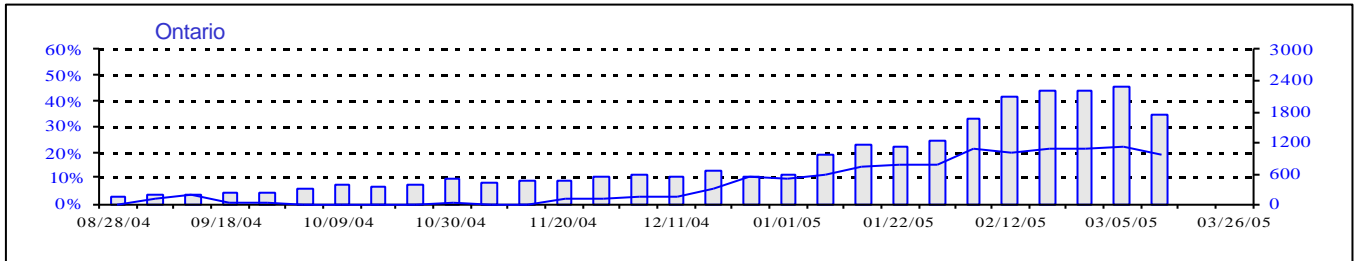
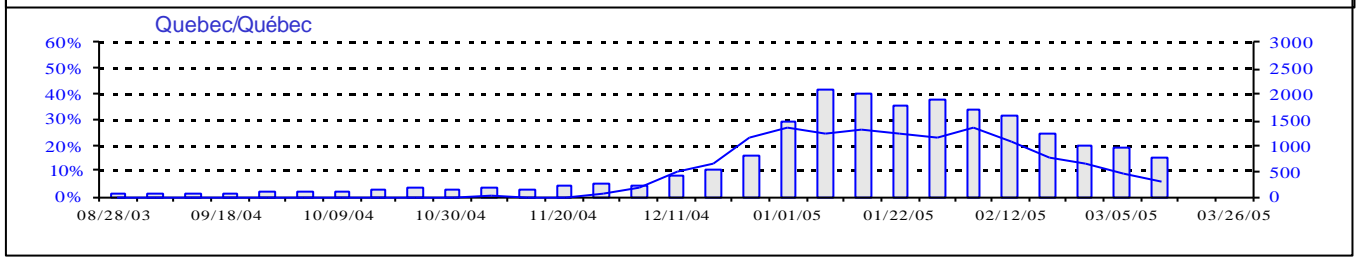
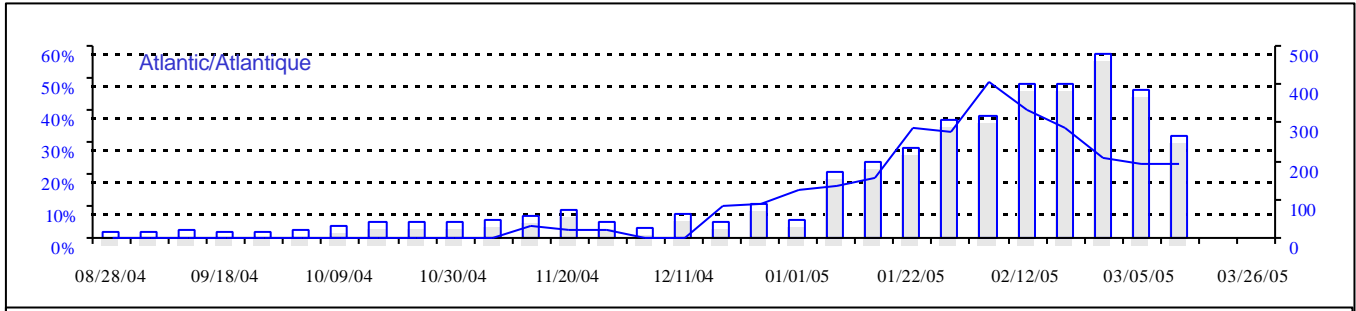
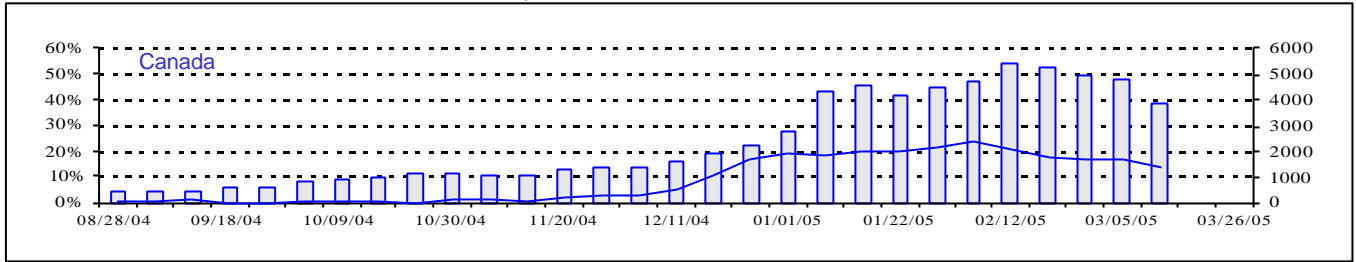
Respiratory Virus Detections/Isolations for the period August 22, 2004 - March 12, 2005  
 Détection/isolément de virus des voies respiratoires pour la période du 22 août 2004 - 12 mars 2005  
 (Reporting Weeks 200435 -200510/Code hebdomadaire 200435-200510)

Reporting Laboratory Laboratoire rapporteur	Flu/Grippe Test	Flu/Grippe A Pos.	Flu/Grippe B Pos.	R.S.V. Test	R.S.V. Pos.	PIV Test	PIV 1 Pos.	PIV 2 Pos.	PIV 3 Pos.	PIV 4 Pos.	Other/Autre PIV Pos.	Adeno Test	Adeno Pos.
Nfld./T.-N.	780	131	0	236	17	52	0	0	0	0	0	67	2
P.E.I./Î.-P.-É.	60	22	0	102	2	60	0	0	0	0	0	60	0
N.S./N.-É.	1223	455	3	706	10	706	1	0	2	0	0	706	9
N.B./N.-B.	1841	377	10	1373	18	1303	1	3	4	0	0	1307	63
Atlantic/Atlantique	3904	985	13	2417	47	2121	2	3	6	0	0	2140	74
Région Nord-Est	2003	470	3	488	124	0	0	0	0	0	0	0	0
Québec-Chaudière-Appalaches	2896	500	17	2232	285	1304	5	1	1	6	0	1814	134
Centre-du-Québec	4205	907	41	1033	214	396	0	0	1	0	0	393	12
Montréal-Laval	7824	1029	59	6295	987	4688	26	2	42	12	0	4725	239
Ouest du Québec	1755	457	18	496	219	0	0	0	0	0	0	0	0
Montérégie	1616	333	24	589	174	0	0	0	0	0	0	0	0
Province of/de Québec	20299	3696	162	11133	2003	6388	31	3	44	18	0	6932	385
Ottawa P.H.L.	189	39	1	14	1	0	0	0	0	0	0	0	0
CHEO/HEEO - Ottawa	2003	242	4	2003	410	1953	3	2	0	0	0	2603	14
Kingston	1063	162	16	1063	74	1063	0	1	4	0	0	1063	3
Toronto Medical Laboratory	1568	103	10	1541	45	1448	0	0	0	0	0	1450	1
C.P.H.L. - Toronto	7738	796	173	8044	368	7136	51	7	20	12	2	7136	90
Sick Kids' Hospital - Toronto	3066	178	77	3291	430	3494	23	3	8	0	0	3494	57
Sunnybrook & Women's College HSC	266	15	2	266	1	266	0	0	0	0	0	266	0
Sault Ste. Marie	206	42	1	206	15	206	0	2	0	0	0	206	1
Timmins	497	111	1	497	27	497	0	0	0	0	0	497	2
St.Joseph's-London	588	49	5	588	90	588	0	1	4	0	1	588	6
London P.H.L.	2769	567	54	2769	198	2769	1	3	6	2	0	2769	40
Orillia P.H.L.	1293	202	26	1293	35	1293	1	2	2	2	0	1293	18
Windsor	648	111	8	540	11	453	0	1	0	0	0	403	0
Thunder Bay	375	59	2	162	35	375	0	0	1	0	0	375	1
Sudbury P.H.L.	406	39	7	406	9	406	4	0	1	0	0	406	0
Hamilton P.H.L.	483	69	3	459	7	0	0	0	0	0	0	0	0
Peterborough P.H.L.	1100	202	46	1100	58	1100	3	2	0	0	0	1100	9
Province of/de l'Ontario	24258	2986	436	24242	1814	23047	86	24	46	16	3	23649	242
Manitoba	2269	123	9	2535	291	1956	2	3	22	0	0	1956	58
Regina	3777	439	6	3777	305	3777	2	35	1	8	1	3777	88
Saskatoon	746	98	2	595	125	746	0	0	0	0	13	746	24
Province of/de la Saskatchewan	4523	537	8	4372	430	4523	2	35	1	8	14	4523	112
Calgary	1979	252	22	1996	55	1999	0	0	0	0	28	1691	87
Edmonton	8293	544	11	8176	844	6494	0	0	0	0	80	4777	165
Province of/de l'Alberta	10272	796	33	10172	899	8493	0	0	0	0	108	6468	252
Prairies	17064	1456	50	17079	1620	14972	4	38	23	8	122	12947	422
Vancouver, B.C./C.-B.	3324	507	28	3324	124	3324	8	21	6	0	0	3274	41
CANADA	68849	9630	689	58195	5608	49852	131	89	125	42	125	48942	1164

Also available at: <http://www.phac-aspc.gc.ca/bid-bmi/dsd-dsm/rvdi-divr/index.html>

Aussi disponible sur le site: [http://www.phac-aspc.gc.ca/bid-bmi/dsd-dsm/rvdi-divr/index\\_f.html](http://www.phac-aspc.gc.ca/bid-bmi/dsd-dsm/rvdi-divr/index_f.html)

Positive Influenza Tests (%) in Canada by Region by Week of Report  
 Détection du virus grippal au Canada, tests positifs (%) par région  
 par semaine de déclaration

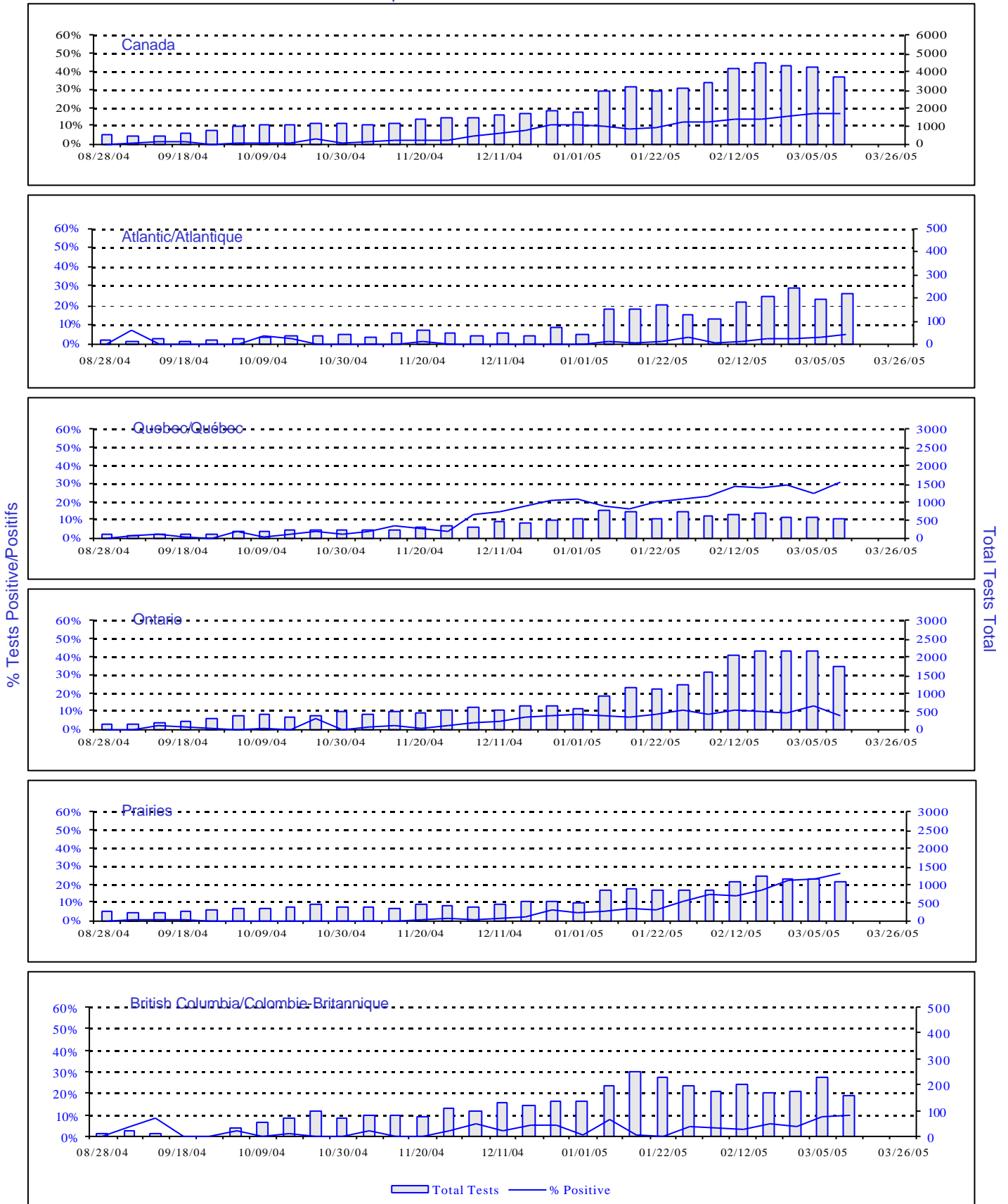


% Tests Positive/Positifs

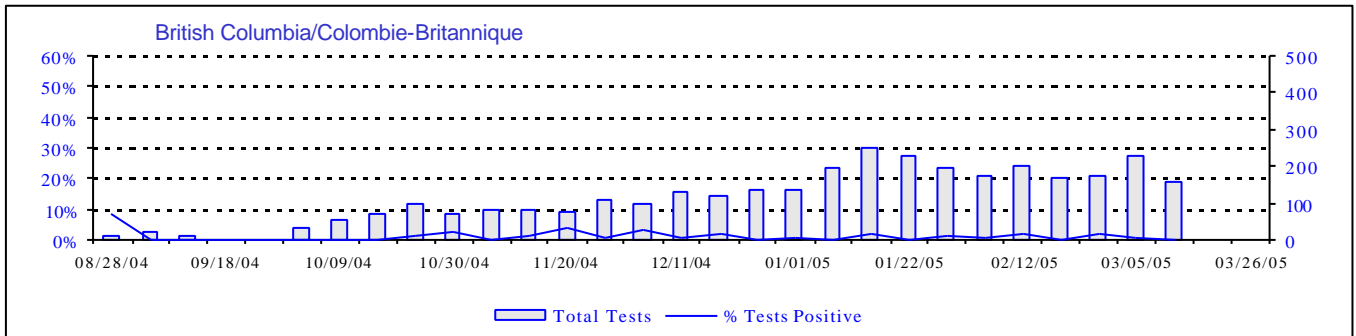
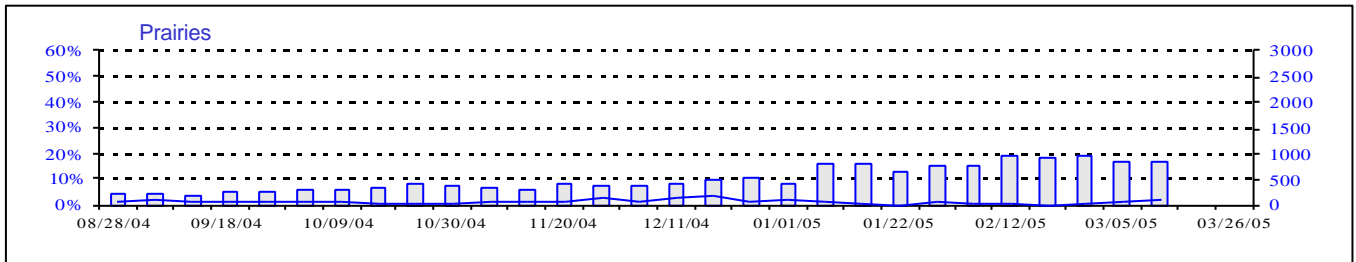
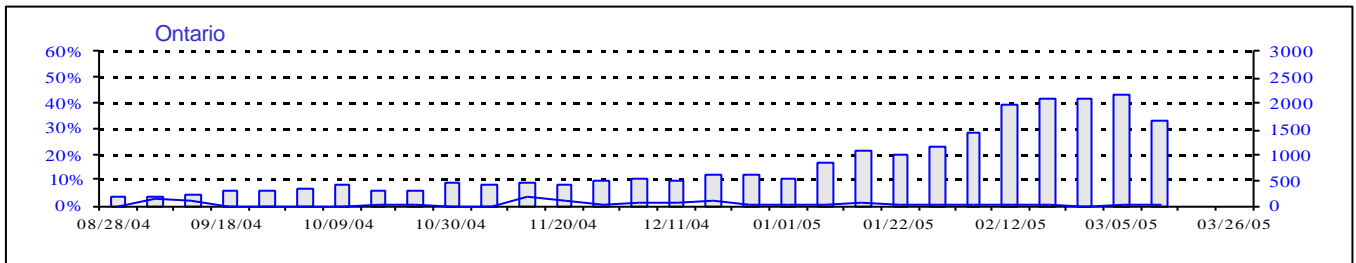
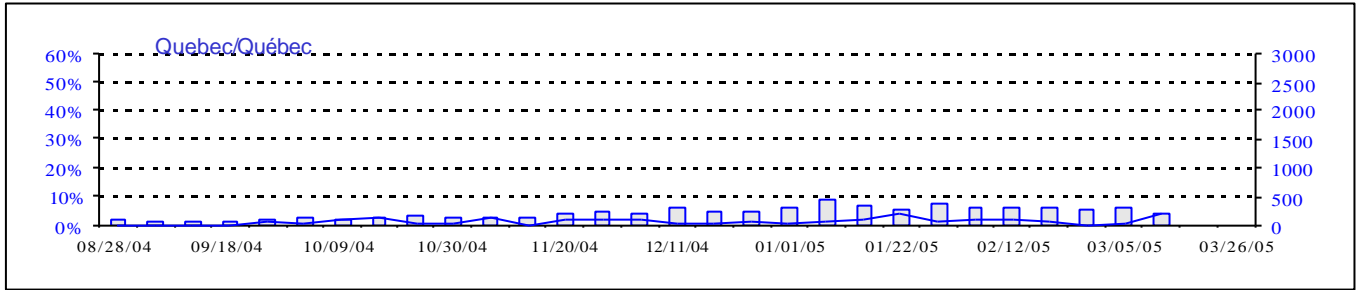
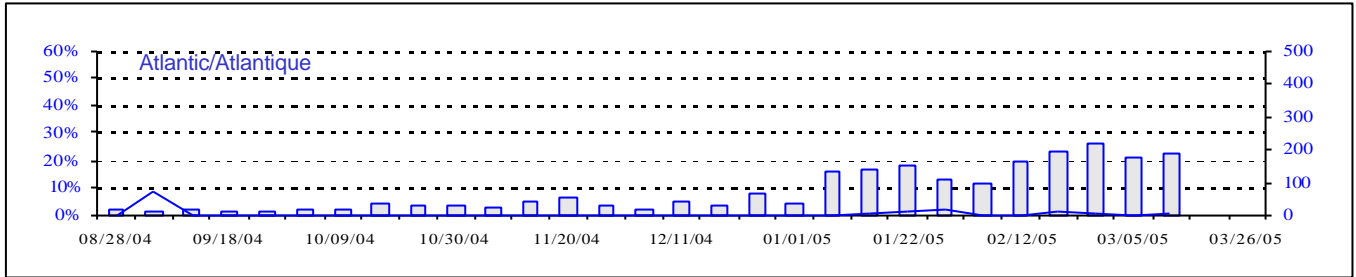
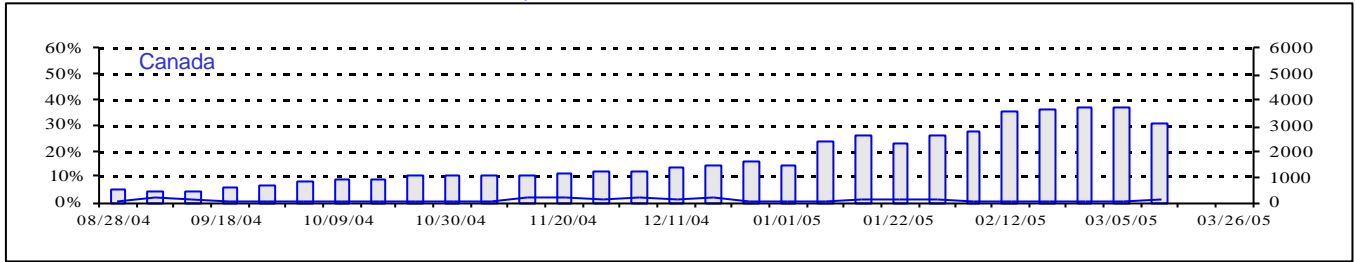
Total Tests Total

Legend: █ Total Tests — % Tests Positive

Positive RSV Tests (%) in Canada by Region by Week of Report  
 Détection du virus respiratoire syncytial au Canada, tests positifs (%) par région  
 par semaine de déclaration



Positive Parainfluenza Tests (%) in Canada by Region by Week of Report  
 Détection du virus parainfluenza au Canada, tests positifs (%) par région  
 par semaine de déclaration

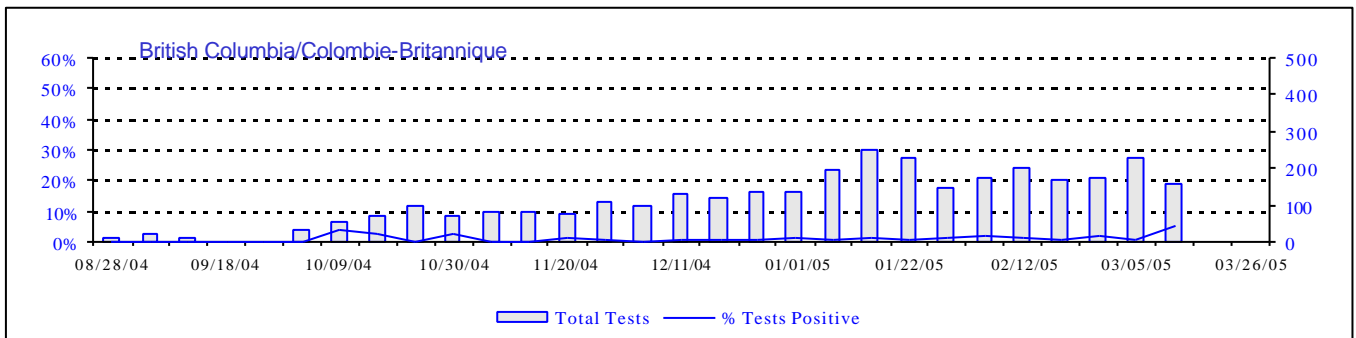
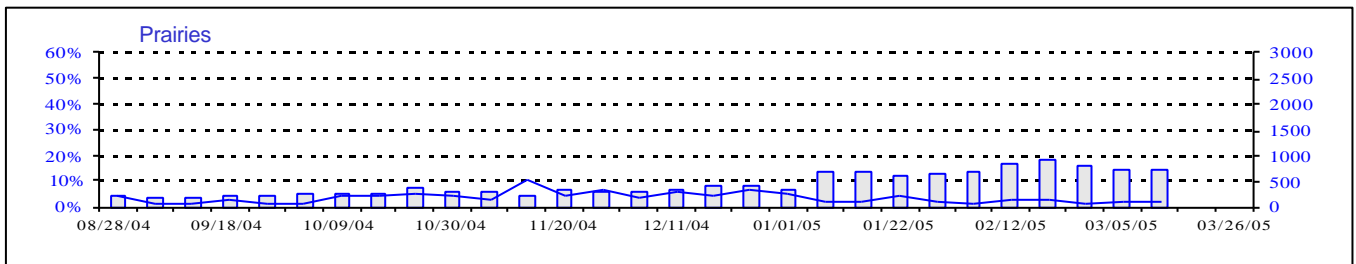
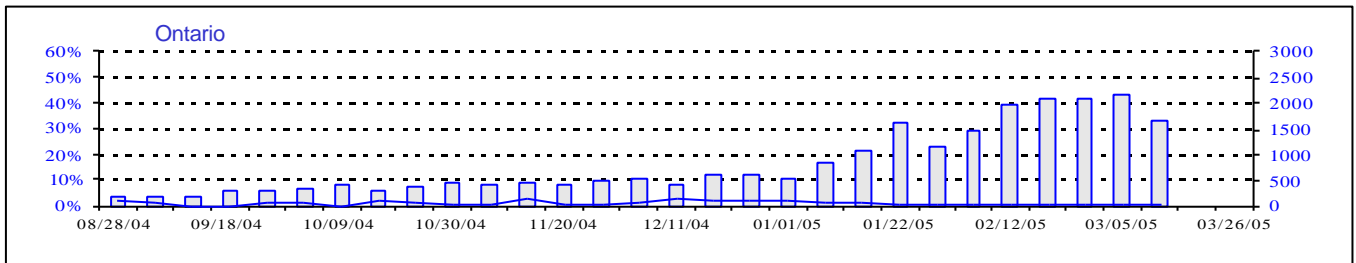
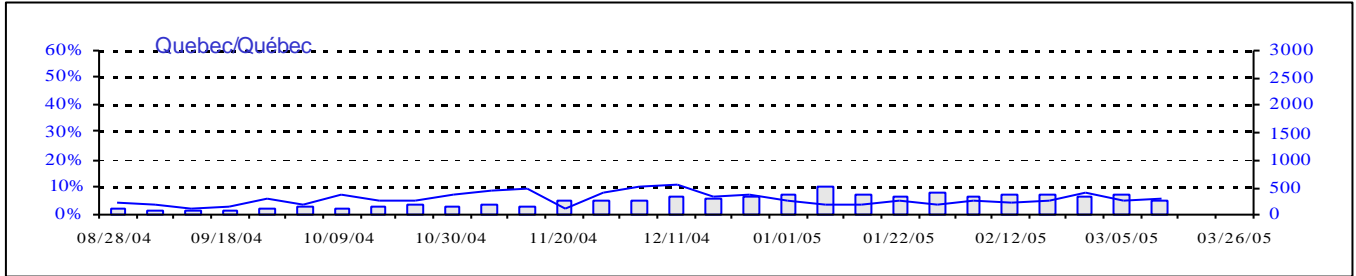
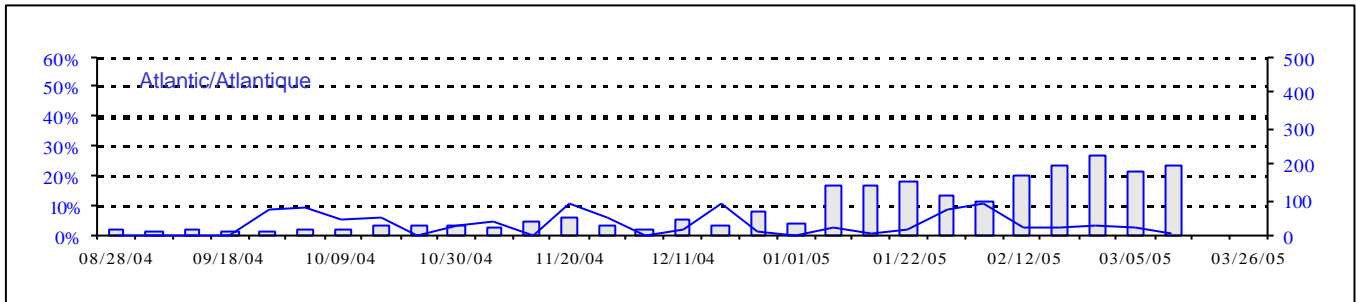
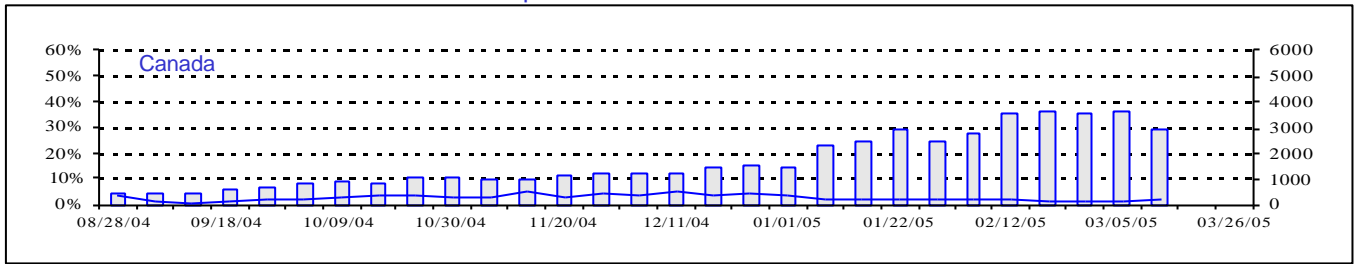


% Tests Positive/Positifs

Total Tests Total

Total Tests
  % Tests Positive

Positive Adenovirus Tests (%) in Canada by Region by Week of Report  
 Détection des adénovirus au Canada, tests positifs (%) par région  
 par semaine de déclaration



% Tests Positive/Positifs

Total Tests Total

▭ Total Tests — % Tests Positive