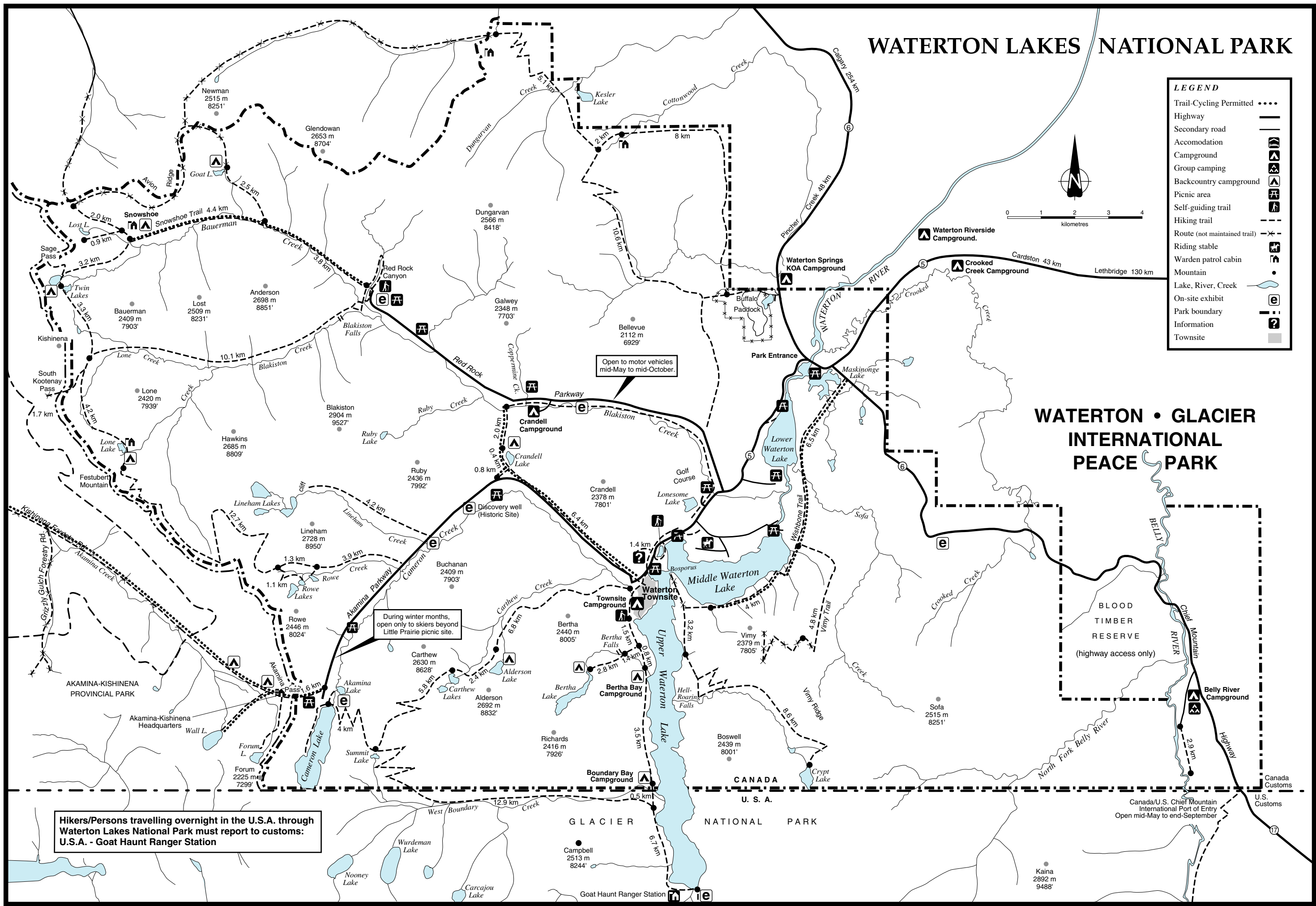
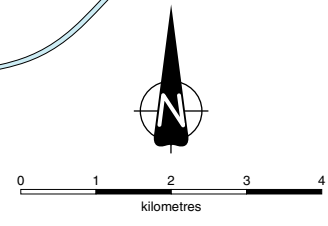


WATERTON LAKES NATIONAL PARK

LEGEND

- Trail-Cycling Permitted
- Highway
- Secondary road
- Accommodation
- Campground
- Group camping
- Backcountry campground
- Picnic area
- Self-guiding trail
- Hiking trail
- Route (not maintained trail)
- Riding stable
- Warden patrol cabin
- Mountain
- Lake, River, Creek
- On-site exhibit
- Park boundary
- Information
- Townsite



WATERTON • GLACIER INTERNATIONAL PEACE PARK

Hikers/Persons travelling overnight in the U.S.A. through Waterton Lakes National Park must report to customs: U.S.A. - Goat Haunt Ranger Station

During winter months, open only to skiers beyond Little Prairie picnic site.

Open to motor vehicles mid-May to mid-October.

Canada/U.S. Chief Mountain International Port of Entry Open mid-May to end-September

CANADA
U. S. A.
GLACIER NATIONAL PARK