

Notice

This presentation is intended for general information purposes only. It only identifies certain highlights of the Building Code. Code users are strongly advised to consult the official records for specific legislative and regulatory requirements, including:

- The *Building Code Act, 1992*, as amended; and
- The Building Code, including amendments not yet in force

Copies of these documents are available from Publications Ontario at 1-800-668-9938 or eLaws at www.e-laws.gov.on.ca

v. Aug 12, 2008

Part 3

- This slide deck is part of a series of slide decks prepared to accompany the Ministry of Municipal and Affairs and Housing's information sessions on the 2006 Building Code. Other slide decks and locations for the Ministry's information sessions are available from the Building Code website at www.obc.mah.gov.on.ca.
- The complete series of slides is intended to:
 - Provide an overview of the 2006 Building Code's new objective-based format and
 - Introduce certain technical highlights of Ontario's 2006 Building Code

Overview: Agenda

- The morning session:
 - Introduction
 - Objective-based format and structure
 - Alternative solutions
 - Highlights of changes to Part 3
 - Highlights of changes to Part 9
- The afternoon session:
 - Highlights of changes to Parts 4, 5, 6, 7, 8 and 11
 - Part 12: Resource Conservation (Energy and Water)

2006 Building Code: Technical Changes

Division B – Part 3


Fire Protection, Occupant Safety and Accessibility

Outline


- 3.1. Combustibility, Firestopping, Raceways, Firewalls and Exposing Building Face (3.2.3.)
 - 3.2. Fire Alarm Systems, Sprinkler Systems and Emergency Lighting
 - 3.2. Mezzanines and Interconnected Floor Spaces
 - 3.3. Safety within Floor Areas
 - 3.4. Exits
 - 3.5. Elevators
 - 3.6. Service Facilities
 - 3.7. Health Requirements
 - 3.8. Barrier-Free Design
 - 3.16. Shelf and Rack Storage Systems
- O. Reg. 349/06

Outline


- 3.1. Combustibility, Firestopping, Raceways, Firewalls and Exposing Building Face (3.2.3.)
 - 3.2. Fire Alarm Systems, Sprinkler Systems and Emergency Lighting
 - 3.2. Mezzanines and Interconnected Floor Spaces
 - 3.3. Safety within Floor Areas
 - 3.4. Exits
 - 3.5. Elevators
 - 3.6. Service Facilities
 - 3.7. Health Requirements
 - 3.8. Barrier-Free Design
 - 3.16. Shelf and Rack Storage Systems
- O. Reg. 349/06

Outline 

- 3.1. Combustibility, Firestopping, Raceways, Firewalls and Exposing Building Face (3.2.3.)
 - Combustible Materials in Combustible and Noncombustible Construction
 - Firestopping
 - Nonmetallic Combustible Raceways
 - Firewalls
 - Exposing Building Face

3.1.2.3.(2) 
Arena Type Buildings

- This Sentence has been moved to Articles 3.2.2.29., 3.2.2.30. and 3.2.2.32.
 - 3.1.2.3.(2) - If the building area of an arena type building is more than 1 500 m², the building shall be sprinklered.

3.1.4.2. 
Protection of Foamed Plastics

- Flame-spread rating of foamed plastics shall not be more than 500
 - (Same limit as for noncombustible construction).

3.1.4.6

Heavy Timber Construction



- Sentence 3.1.4.6.(2) which references CAN/CSA-0141, "Softwood Lumber" has been replaced as the same dimension are given in Table 3.1.4.6.
- Article structure was re-organized and additional changes made to clarify requirements.

3.1.5.1.

Noncombustible Materials



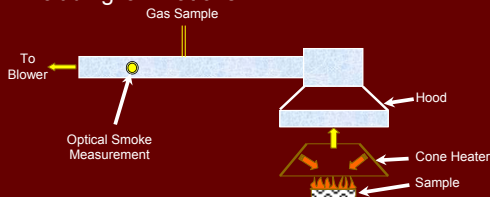
- OBC 1997:
 - Defined as meeting CAN/ULC-S114
 - Excludes materials that are marginally combustible
 - Excludes laminated materials with combustible components

3.1.5.1.

Noncombustible Materials



- The Article has been revised to expand the criteria for non-combustibility
- Cone Calorimeter Test for material properties CAN/ULC-S135
- Criteria: heat release, smoke
- Allows marginally combustible materials, including laminations



3.1.5.2. Minor Combustible Components



- Gypsum board moved to a separate Article 3.1.5.11.
- Article 3.1.5.11. Gypsum Board
 - Facing paper limited to 1 mm thick
 - Flame-spread rating of paper limited to 25

3.1.5.5. Combustible Components for Exterior Walls



- Wood decorative cladding in Sentence 3.1.5.5.(5) has been relocated to Article 3.1.5.25.

3.1.5.20. Nonmetallic Raceways



- Larger raceways permitted
- No change in rating (FT-4)
- ULC/ORD-C2024, "Fire Tests for Optical Fibre Cable Raceways" 1997 ~ 28 mm

3.1.5.20. Nonmetallic Raceways



- Larger raceways permitted
- No change in rating (FT-4)
- ULC/ORD-C2024, "Fire Tests for Optical Fibre Cable Raceways"



2006
175 mm

3.1.8. Fire Separations and Closures



3.1.8.18. Sprinkler Protected Glazed Wall Assembly

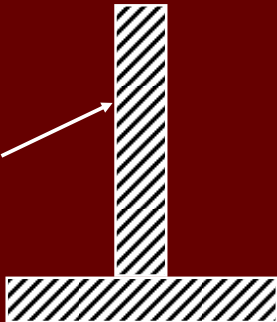
A new Article added for Sprinkler Protected Glazed Wall Assemblies

- Currently sprinkler protected glazed wall assembly is accepted under BMEC authorization or compliance equivalency.

**OBC 1997
3.1.10.2.(3) Firewalls**



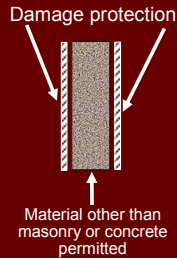
Masonry or concrete only



OBC 2006
3.1.10.2.(4) Firewalls



- Level of performance equal to that of masonry or concrete:
 - During fire conditions,
 - Normal use of building, and
 - Resistant to moisture damage
- For 2 h firewalls
- Cannot be used:
 - In B1 major occupancies,
 - In B2 major occupancies,
 - In 3.2.6. high buildings

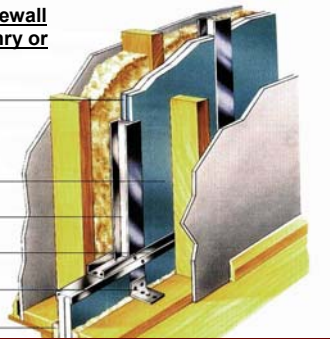


3.1.10.2.(4)
Firewall



**An example of firewall
other than masonry or
concrete**

- 2 Layers of 1" Gypsum Panels
- 3/4" Airspace
- 2" H-studs
- 2" Runners
- Breakaway Clip
- Fire Stopping



**3.1.11.5. Fire Stopping of
Horizontal Concealed Spaces**

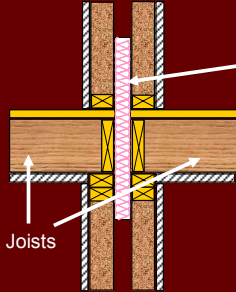


- Article renamed from "Fire Stopping of Roof Spaces, Balconies and Canopies", and revised to clarify that the requirement applies to floor as well as roof assemblies.

3.1.11.7.(7)
Fire Stopping in Walls



- New exception



Semi-rigid fibre insulation board fastened to one set of studs permitted as fire stop

THIS IS NOT AN EXAMPLE OF A FIRE SEPARATION

Table 3.1.13.2.
Flame-Spread Ratings



- Flame-spread rating of 75 for walls and ceilings has been added in Table 3.1.13.2. for Group B occupancies that are not sprinklered.

3.1.19.1.
Clearance to Buildings



- Clause 3.1.19.1.(1)(b) has been modified to read *the horizontal clearance between the building and the maximum conductor swing shall be not less than 3 m.*

3.2.3.2. Area of Exposing Building Face



Simplification

- OBC 1997:
 - rating of fire separations varied in accordance with Subsection 3.2.2. where the building was divided into fire compartments for the purpose of calculation of the exposing building face
- OBC 2006:
 - rating of fire separations standardized to 45 min

3.2.3.7. Construction of Exposing Building Face



- Sentences 3.2.3.7.(7) and (8) moved to form Article 3.2.3.8., and Sentence 3.2.3.7.(9) was revised and renumbered to 3.2.3.7.(7).
- New Sentence 3.2.3.7.(8) added.
 - (8) The construction requirements for the *exposing building face* that are required by Sentences (1) to (6) shall be satisfied before applying the increased opening area permitted by Sentence 3.2.3.12.(1).

3.2.3.12. Area Increase for Unprotected Openings



- Sentence 3.2.3.12.(1) adds new reference to Sentence 3.2.3.7.(8).

3.2.3.8. Protection of Exterior Building Face



- New Article 3.2.3.8. created with Sentences 3.2.3.7.(7) and 3.2.3.7.(8) of the 1997 building code.

3.2.3.4. Reserved (OBC 2006)



OBC 1997

3.2.3.4. Party Wall

(1) A party wall shall be constructed as a firewall.

Outline



- 3.1. Combustibility, Firestopping, Raceways, Firewalls and Exposing Building Face (3.2.3.)
- 3.2. Fire Alarm Systems, Sprinkler Systems and Emergency Lighting
- 3.2. Mezzanines and Interconnected Floor Spaces
- 3.3. Safety within Floor Areas
- 3.4. Exits
- 3.5. Elevators
- 3.6. Service Facilities
- 3.7. Health Requirements
- 3.8. Barrier-Free Design
- 3.16. Shelf and Rack Storage Systems
- O. Reg. 349/06

Outline

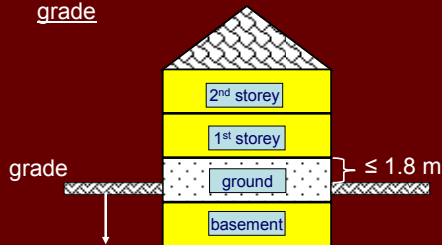


- 3.2. Fire Alarm Systems, Sprinkler Systems and Emergency Lighting
 - When a Fire Alarm System is required
 - Installation and verification of Fire Alarm Systems
 - Signals to fire department
 - Alarm Signals
 - Audibility levels
 - Circuits
 - Silencing Devices
 - Voice Communication
 - Sprinklers
 - Emergency Lighting

3.2.4.1.(2)(c) Determination of Requirement for Fire Alarm Systems



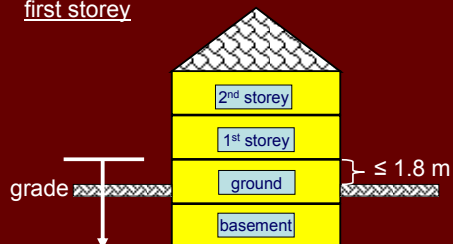
- **OBC 1997:** Fire alarm system required for buildings > 3 storeys, including storeys below grade



3.2.4.1.(2)(c) Determination of Requirement for Fire Alarm Systems

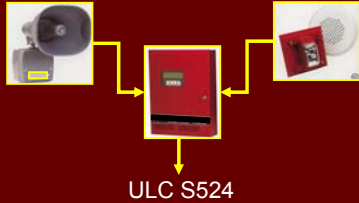


- **OBC 2006:** Fire alarm system required for buildings > 3 storeys, including storeys below first storey



3.2.4.5.(1) Installation and Verification of Fire Alarm Systems

- Clarification:
- Fire alarm system includes voice communication systems



3.2.4.5.(2) Installation and Verification of Fire Alarm Systems

- Sentence 3.2.4.5.(2) requires that a fire alarm system be verified in conformance with CAN/ULC-S537, "Verification of Fire Alarm Systems" to ensure satisfactory operation.

3.2.4.7.(4) Signals to Fire Departments

Notification to fire department as per CAN/ULC-S561, "Installation and Services for Fire Signal Receiving Centres and Systems"



3.2.4.7. Signals to Fire Department

- Existing Sentence 3.2.4.7.(6) for single stage fire alarm systems has been revised and renumbered to 3.2.4.7.(5).
 - Applies when the building is unsprinklered, and when Sentence 3.2.4.7.(1) does not apply

3.2.4.8.(7) Annunciator and Zone Indication

Sentence 3.2.4.8.(7) clarifies the relationship between an annunciator and a control unit



Annunciator

Control Unit

3.2.4.11. Smoke and Heat Detectors

- Sentence 3.2.4.20.(2) revised and relocated to Sentence 3.2.4.11.(3).

3.2.4.18. Alert and Alarm Signals



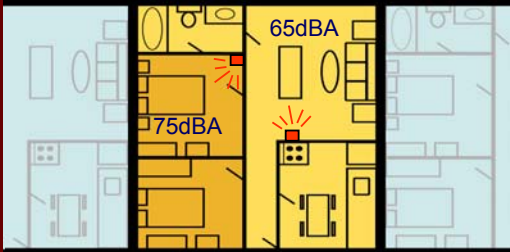
Sentence (4) revised and new Sentence (6) added

- 4) Except as permitted in Sentence (6), visual signal devices shall be installed in addition to audible signal devices.
 - (a) in a building or portion of it intended for use primarily by persons with hearing impairment,
 - (b) in a public corridor serving a Group A, B, D or E occupancy,
 - (c) in a corridor used by the public and in a floor area or part of it where the public may congregate in Group A occupancy, and
 - (d) in not less than 10% of the suites of a hotel or motel.
- 6) Visual signal devices required by Clauses (4)(b) and (c) are not required in,
 - (a) a classroom, and
 - (b) a Group B, Division 3 occupancy that contains sleeping accommodation for not more than 10 persons and not more than 6 occupants require assistance in evacuation in case of an emergency.

3.2.4.19.(6) Audibility Levels within Residential Occupancies



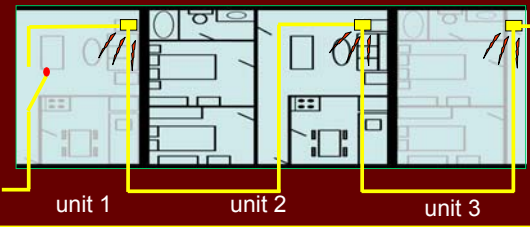
Clarifies that a minimum 65 dBA applies to residential occupancies




3.2.4.19.(10) Signal Circuits in Dwelling Units and Residential Occupancies

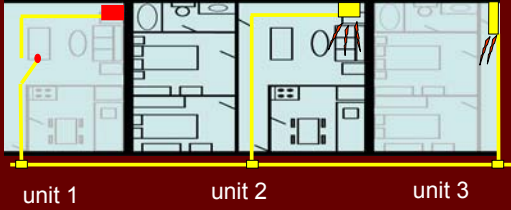


- Option 1: (Class A Wiring Circuit)
 - single open circuit will not impair other devices



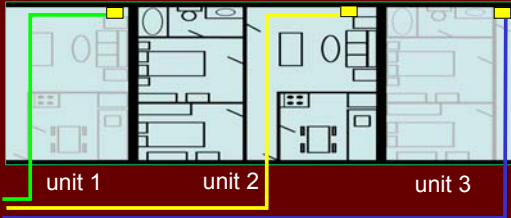
3.2.4.19.(10) Signal Circuits in Dwelling Units and Residential Occupancies 


- Option 2: (Class B Wiring Circuit)
 - single open circuit will not impair other devices



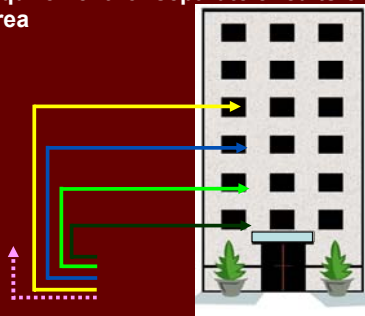
3.2.4.19.(10) Signal Circuits in Dwelling Units and Residential Occupancies 

- Option 3:
 - separate signal circuits for each suite



3.2.4.19.(11) Signal Circuits in Residential Occupancy 

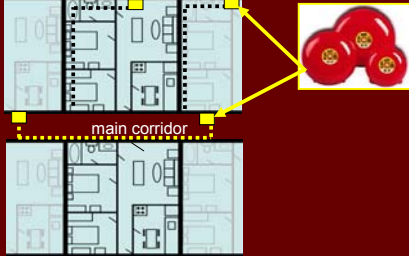
- New requirement for separate circuits on each floor area



3.2.4.19.(11) Signal Circuits in Residential Occupancy



- Audible devices within suites independent from those devices outside suites



3.2.4.19.(9) Manual Silencing in Dwelling Units



- “Except as permitted in Sentence (13), audible signal silence devices within dwelling units shall include a means for them to be manually silenced...”

3.2.4.19.(13) Automatic Silencing Feature in Dwelling Units



- Manual silencing devices not required within dwelling units if:
 - Automatic silence cannot occur within 60 seconds or within zone of initiation,
 - alarm reactivated upon second alarm,
 - alarm restored after 10 min, and,
 - voice communication overrides

3.2.4.22.(2) Voice Communication
Silence Feature



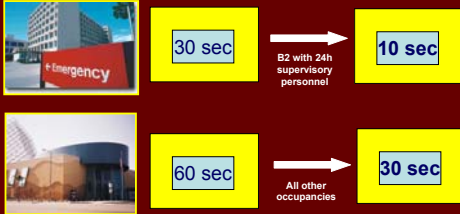
- Silence feature of alarm signal in single stage system reduced from 60 seconds to 30 seconds.



3.2.4.22.(3) Voice Communication
Silence Feature



- Silence feature of alert and alarm signal in 2 stage system reduced.



3.2.5.1.(2) Access to
Above Grade Storeys



- The maximum sill height of the fire fighting access window has been increased to 1 070 mm from the existing 900 mm

3.2.5.13.(6) Sprinklers in One and Two Family Dwellings



- Sprinkler systems designed to NFPA 13D
 - sprinklers no longer required in small closets and bathrooms below roof assemblies even where roof rating waived due to the installation of sprinklers in accordance with Article 3.2.2.17.



3.2.5.14.(5) Combustible Sprinkler Piping



- Protection of combustible sprinkler piping not required if
 - tested to ULC/ORD-C199P, "Combustible Piping for Sprinkler Systems"



3.2.7.3.(1) Emergency Lighting



New Requirement

- Emergency lighting required in:
 - access to exits in open floor areas
 - service rooms
 - day care centres
 - food preparation areas in commercial kitchens

3.2.7.6. Emergency Power Supply for Hospitals Ontario

- Reference to CSA Z32, "Electrical Safety and Essential Electrical Systems in Health Care Facilities".




3.2.7.3.(4) Battery-Operated Emergency Lighting in Health Care Facilities Ontario

- New Sentence 3.2.7.3.(4) added
- Reference to CSA Z32, "Electrical Safety and Essential Electrical Systems in Health Care Facilities"



3.2.7.10. Protection of Electrical Conductors Ontario


- Requirements of Article 3.2.6.14. have been amended and moved to a new Article 3.2.7.10. to clarify the application of the requirements.



Outline

- 3.1. Combustibility, Firestopping, Raceways, Firewalls and Exposing Building Face (3.2.3.)
- 3.2. Fire Alarm Systems, Sprinkler Systems and Emergency Lighting
- **3.2. Mezzanines and Interconnected Floor Spaces**
- 3.3. Safety within Floor Areas
- 3.4. Exits
- 3.5. Elevators
- 3.6. Service Facilities
- 3.7. Health Requirements
- 3.8. Barrier-Free Design
- 3.16. Shelf and Rack Storage Systems

- O. Reg. 349/06



Outline

- 3.2. Mezzanines and Interconnected Floor Spaces
 - Mezzanines
 - Interconnected Floor Spaces
 - Mezzanine Egress



3.2.1.1. Exceptions in Determining Building Height

3.2.1.1.(3) Open mezzanines



Restaurant

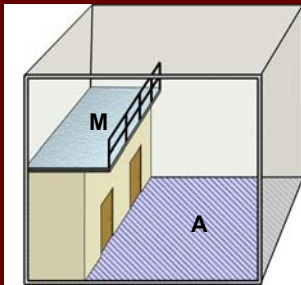


Laboratory

3.2.1.1.(3) Open Mezzanines not Considered a Storey



- Open mezzanine not considered a storey if:
 - it occupies $\leq 40\%$ of the open area of the room it is located in, and,
 - the space above the mezzanine is open

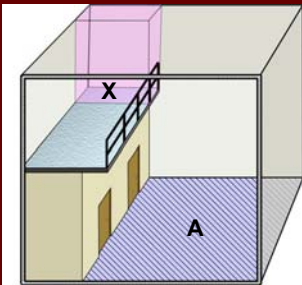


Area of M $\leq 40\%$ Area of A

3.2.1.1.(8) Enclosed Space Above Open Mezzanine not Considered a Storey



- Enclosed space now permitted on an open mezz.

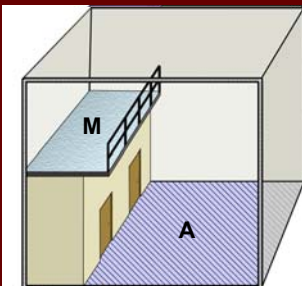


Area of X $\leq 10\%$ Area of A

3.2.1.1.(8) Enclosed Space Above Open Mezzanine not Considered a Storey



- Enclosed space now permitted on an open mezz.



Area of M $\leq 40\%$ Area of A

3.2.1.1. Exceptions in Determining Building Height

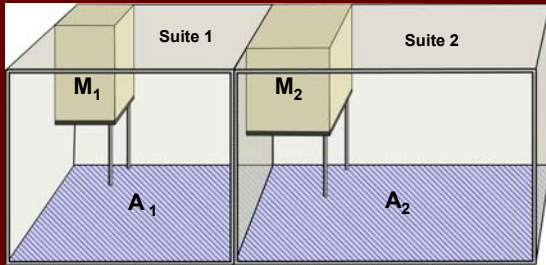


3.2.1.1.(4) Enclosed Mezzanines



School Gymnasium

3.2.1.1.(4) Enclosed Mezzanines not Considered a Storey



Area of $M_1 \leq 10\%$ Area of A_1

3.2.8. Mezzanines and Openings through Floor Assemblies



Mezzanine and interconnected floor spaces must:

- terminate at rated fire separations,
- fall under the exceptions listed in 3.2.8.2., or
- conform to Articles 3.2.8.3. to 3.2.8.11.

OBC 2006 :

- approach remains unchanged
- some clarification and additions



3.2.8.2.(6) Exceptions to Special Protection 

- Change: Group F-2 occupancies now added to Group A, D, E and F-3 occupancies
- Reason: Many similarities with Group E



Outline 

- 3.1. Combustibility, Firestopping, Raceways, Firewalls and Exposing Building Face (3.2.3.)
- 3.2. Fire Alarm Systems, Sprinkler Systems and Emergency Lighting
- 3.2. Mezzanines and Interconnected Floor Spaces
- **3.3. Safety within Floor Areas**
- 3.4. Exits
- 3.5. Elevators
- 3.6. Service Facilities
- 3.7. Health Requirements
- 3.8. Barrier-Free Design
- 3.16. Shelf and Rack Storage Systems
- O. Reg. 349/06

Outline 

- **3.3 Safety within Floor Areas**
 - Fire Separations of Public Corridors and other Corridors
 - Unobstructed width of Corridors
 - Aisles
 - Ramps and Stairways that do not serve as Exits
 - Bleachers
 - Sound Transmission Class Rating

3.3.1.3. Means of Egress

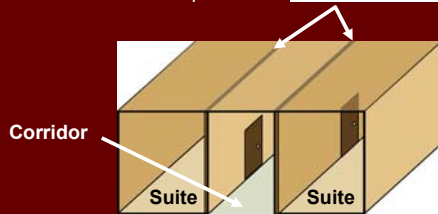


- Sentence 3.3.1.3.(10) now permits fixed ladders as a means of egress for personnel servicing roof top equipment.

3.3.1.4.(1) Public Corridor Fire Separation



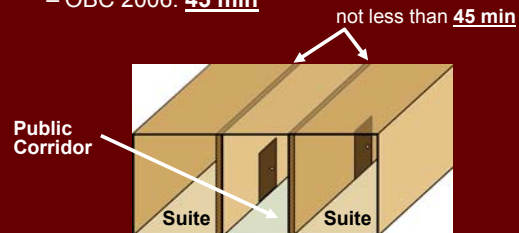
- OBC 1997: Fire separation to remainder of building
- OBC 2006: Fire separation to remainder of the storey



3.3.1.4.(2) Public Corridor Fire Separation



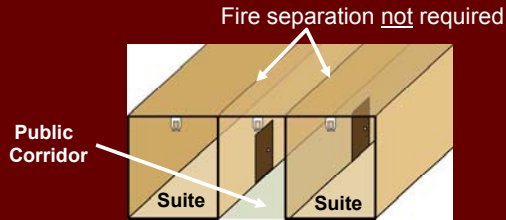
- Public corridor rating:
 - OBC 1997: 1 h
 - OBC 2006: 45 min



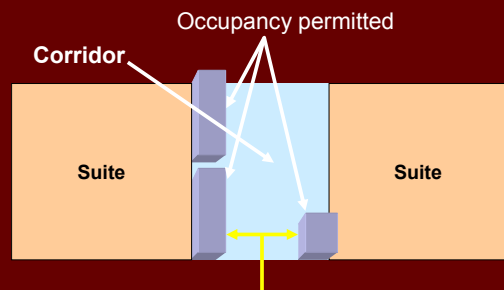
3.3.1.4.(4) Public Corridor Fire Separation



- **No** fire separation required if:
 - the storey is sprinklered, and,
 - total travel distance to exit \leq 45 m



3.3.1.9.(5) Occupancy in Corridors



Minimum unobstructed width for ALL corridors

3.3.1.9.(15) Aisles in Open Floor Areas



•New Sentence added to reference Fire Code for aisles.

•OFC addresses aisles in:

- assembly,
- office,
- mercantile, and
- Industrial



3.3.1.13.(1) Ramps and Stairways



Ramps and stairways that do not serve as exits must conform to:

- OBC 1997:
 - Section 3.4.
- OBC 2006:
 - Sentence 3.4.3.2.(7)
 - Articles 3.4.3.5.
 - Articles 3.4.6.1. to 3.4.6.8.



3.3.2.10.(5) Bleachers



- New limit for the size of openings in the space between the bleacher seat and footboard.




≤ 100 mm diameter

3.3.4.6. Sound Transmission



- Relocation:
 - To Section 5.9. of 2006 OBC
 - Sign post provided in Sentence 3.3.4.6.(1)




 Ontario

Outline


- 3.1. Combustibility, Firestopping, Raceways, Firewalls and Exposing Building Face (3.2.3)
- 3.2. Fire Alarm Systems, Sprinkler Systems and Emergency Lighting
- 3.2. Mezzanines and Interconnected Floor Spaces
- 3.3. Safety within Floor Areas
- **3.4. Exits**
- 3.5. Elevators
- 3.6. Service Facilities
- 3.7. Health Requirements
- 3.8. Barrier-Free Design
- 3.16. Shelf and Rack Storage Systems

- O. Reg. 349/06

 Ontario




Outline

- 3.4 Exits
 - Principal Entrances as Exits
 - Width and Height of Exits
 - Elevators in Exit Lobbies
 - Handrails for Stairs and Ramps
 - The Leading Edge of Stair Treads

 Ontario

3.4.2.6. Principal Entrances as Exits

- New requirement:
 - At least one door at every principal entrance to a building to be designed as an exit.
 - Exit sign and manual pull station required.

3.4.3. Width and Height of Exits



- Restructured – Logical format:
 - 3.4.3.1. Exit Width Based on Occupant Load
 - 3.4.3.2. Exit Width
 - 3.4.3.3 Exits from Interconnected space
 - 3.4.3.4. Exit Width Reduction
 - 3.4.3.5. Headroom Clearance



3.4.4.2.(2) Elevators in Exit Lobbies



- Explicitly Permitted in 2006 OBC:
 - passenger elevators entrances are explicitly permitted to open onto the lobby provided the elevator doors remain closed when the elevator is not in use



3.4.5.1.(1)(6) and (9) Exit Signage



- Exit signage no longer exempted at:
 - Main entrance to a room or building, and,
 - Main entrance to rooms serving certain types of assembly occupancies
- Existing exit sign exception for certain small Group B, Division 3 occupancies remains.



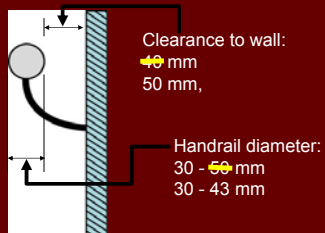
3.4.3.2.(7) and 3.4.5.2.(1) Exit Level



- Concept of exit level:
 - Now applicable to design of exit stairways
 - Used as point of reference to determine:
 - stair width
 - signage requirement in stairs



3.4.6.4.(3) and (8) Handrails



3.4.6.3.(5) Ramp Landings



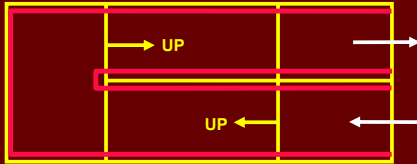
- Scope expanded:
 - OBC 1997: Landings for stair flights only
 - OBC 2006: Landings for stairs **and ramps**



3.4.6.4.(5) and (10)
Ramp Handrails

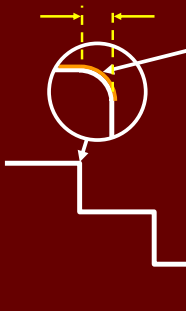


- Ramp handrails to be:
 - continuous
 - on both sides



Top view of ramp

3.4.6.7.(4) and (6)
Leading Edge of Stair Tread



Horizontal dimension
of bevel or radius:
~~0~~ 13 mm
6* – 10 mm

***Exception**

3 mm radius allowed
for resilient nosing
material

Outline



- 3.1. Combustibility, Firestopping, Raceways, Firewalls and Exposing Building Face (3.2.3.)
- 3.2. Fire Alarm Systems, Sprinkler Systems and Emergency Lighting
- 3.2. Mezzanines and Interconnected Floor Spaces
- 3.3. Safety within Floor Areas
- 3.4. Exits
- **3.5. Elevators**
- 3.6. Service Facilities
- 3.7. Health Requirements
- 3.8. Barrier-Free Design
- 3.16. Shelf and Rack Storage Systems

- O. Reg. 349/06

Outline



- **3.5 Elevators**

- Barrier-Free Elevators

- Unrated Elevator Shafts in Interconnected Floor Spaces or Atria

3.5.2.2.(1)

Barrier-Free Elevators



- All passenger elevators to conform to:
- Appendix E of CSA B44 "Safety Code for Elevators"




3.5.3.1.(2) Elevators in Interconnected Floor Spaces



- Elevators without rated hoistway enclosure permitted if:
 - Elevators not for fire fighters, and
 - Elevator machine room fire separated from the remainder of the building




 Ontario

Outline


- 3.1. Combustibility, Firestopping, Raceways, Firewalls and Exposing Building Face (3.2.3.)
- 3.2. Fire Alarm Systems, Sprinkler Systems and Emergency Lighting
- 3.2. Mezzanines and Interconnected Floor Spaces
- 3.3. Safety within Floor Areas
- 3.4. Exits
- 3.5. Elevators
- **3.6. Service Facilities**
- 3.7. Health Requirements
- 3.8. Barrier-Free Design
- 3.16. Shelf and Rack Storage Systems

- O. Reg. 349/06

 Ontario

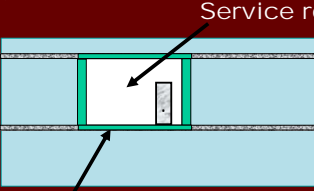
Outline

- 3.6 Service Facilities
 - Service Room Fire Separations
 - Emergency Power Installations
 - Plenum Requirements

 Ontario

3.6.2.1. Service Room Fire Separations

- Articles 3.6.2.1. and 3.6.2.2. combined for clarity.



Service room

1 h separation from rest of the building (with some exemptions)

3.6.2.8. Emergency Power Installations



- New Article applicable to generator rooms:
 - generator for emergency lighting, fire safety and life safety systems
 - 2 h fire rating for 3.2.6 buildings
 - 1 h for other buildings
 - room contains emergency equipment only

3.6.4.3. Plenum Requirements



- New Sub-clause 3.6.4.3.(1)(a)(iv)
- For totally enclosed nonmetallic raceways in plenums
- Tested to ULC/ORD-C2024, "Fire Tests for Optical Fibre Cable Raceway" (FT-6 Rating)

Outline



- 3.1. Combustibility, Firestopping, Raceways, Firewalls and Exposing Building Face (3.2.3.)
- 3.2. Fire Alarm Systems, Sprinkler Systems and Emergency Lighting
- 3.2. Mezzanines and Interconnected Floor Spaces
- 3.3. Safety within Floor Areas
- 3.4. Exits
- 3.5. Elevators
- 3.6. Service Facilities
- 3.7. Health Requirements
- 3.8. Barrier-Free Design
- 3.16. Shelf and Rack Storage Systems

- O. Reg. 349/06

Outline



- 3.7 Health Requirements
 - Shared Washrooms
 - Lavatories
 - Employee Washrooms in small Restaurants
 - Surface Protection around Water Closets

3.7.4.2. Plumbing Fixtures, General



- New Sentence added:
- Sentence 3.7.4.2.(8) allows both sexes to be served by a single water closet in **certain occupancies** if the occupant load is not more than 10 persons.

3.7.4.2.(9) and (10) Lavatories



- New provision for lavatory faucets
- Shelves or projections above lavatories moved from Section 3.8



3.7.4.3. Plumbing Fixtures for Assembly Occupancies

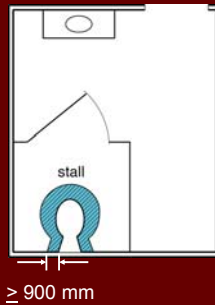


- Requirement for employee washrooms in small restaurants has been clarified.
- Inconsistencies in water closet requirements between small versus large restaurants have been removed.

3.7.4.12. Surface Protection



- Scope broadened to include:
 - protection of floor surface for water closets
- Protection of floor and wall surfaces at urinals remains



Outline



- 3.1. Combustibility, Firestopping, Raceways, Firewalls and Exposing Building Face (3.2.3.)
- 3.2. Fire Alarm Systems, Sprinkler Systems and Emergency Lighting
- 3.2. Mezzanines and Interconnected Floor Spaces
- 3.3. Safety within Floor Areas
- 3.4. Exits
- 3.5. Elevators
- 3.6. Service Facilities
- 3.7. Health Requirements
- 3.8. Barrier-Free Design
- 3.16. Shelf and Rack Storage Systems
- O. Reg. 349/06

Outline



- **3.8 Barrier-Free Design**

- Accessibility Signs
- Barrier-Free Paths of Travel
- Height of Controls
- Uniformity of Doorway Dimensions
- Power Door Operation
- Ramps
- Universal Toilet Rooms

3.8.1.3. Barrier-Free Path of Travel



- **Sentence 3.8.1.3.(1) has been revised:**
- Minimum unobstructed width of a barrier-free path of travel increased to **1 100 mm** from 1 060 mm.
- Harmonize with the required public corridor width of 1 100 mm.

3.8.1.5.(1) Controls



- Maximum height:
- **1200 mm**
- New minimum height:
- **900 mm**



**3.8.1.5.(2)
Controls**



- New Sentence added:
- “A signal intended for the public to indicate the operation of a *building* security system that controls access to a *building* shall consist of an audible and visual signal.”

**3.8.2.1.(4) Areas Requiring
Barrier-Free Path of Travel**



- **Not less than 10% of residential suites in apartment buildings require a barrier-free path of travel:**
 - To the doorway to at least one bedroom at the same level, and
 - To the doorway to at least one bathroom having an area not less than 4.5 m², and conforming to Sentence 9.6.3.3.(1).

**3.8.2.4.
Hotels**



- **Barrier-free path of travel for Hotel Suites**
 - Required in at least 10% of suites in a hotel (not exceed 20)
 - Suites with barrier-free path of travel to be distributed among barrier-free storeys
 - The barrier-free path of travel within suites must extend to the inside of each room and to a balcony required by Sentence 3.3.1.7.(2)
 - These suites are required to have barrier-free bathrooms

3.8.3.1.(1) & (5)
Accessibility Signs



- Accessibility Signs now required to indicate the location of:
 - Barrier-free entrance and ramps located in the barrier-free path of travel serving the entrance
 - If wall mounted, must be installed between 1 200 mm – 1 500 mm above floor

3.8.3.3.
Doorways and Doors



- (1) Every doorway that is located in a *barrier-free* path of travel shall have a clear width of not less than 850 mm when the door is in the open position.



- OBC 1997: 810 mm
- OBC 2006: 850 mm

3.8.3.3.(5), 3.8.3.3.(16) & 3.8.3.3.(17)
Power Door Operation



- Clarification:
 - install on **all doors in series** (i.e., vestibules) when power door operation required

New provisions (16) and (17)

- Operate from both side
- Minimum requirements for power door operator controls

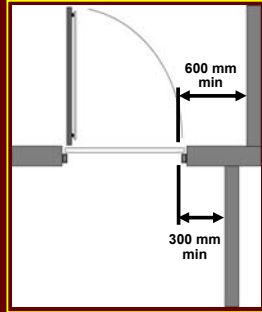


3.8.3.3.(10) Clear Space at Doorway in a Barrier-Free Path of Travel



- Scope broadened:
 - OBC 1997: only doors with a closer
 - OBC 2006: all doors except those with power operation

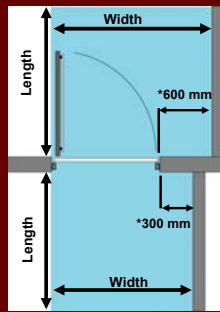
Latch clearance dimensions remain unchanged.



3.8.3.3.(13) Floor Surface for Doorways and Doors



- Level space on each side of the door:
- Length: width of barrier-free path, but not more than 1500 mm
- Width: width of door plus latch clearance requirements of 3.8.3.3.(10)



3.8.3.4.(1) Ramps



- OBC 1997
 - Minimum width of 870 mm between handrails
 - Landings at least 1 500 mm x 1 500 mm
- OBC 2006
 - Minimum width of 900 mm between handrails
 - Landings at least 1 670 mm x 1 670 mm

3.8.3.8.(1)(d)(i)
Water Closet Stalls



- The height of both angular and L-shaped grab bars to be mounted 750 mm to 900 mm above the floor:
 - 50 mm in front of toilet bowl for angular grab bars
 - Vertical component of L-shaped grab bars to be 150 mm in front of toilet bowl

3.8.3.12. Universal Toilet Rooms



OBC 1997:
Special Washroom



OBC 2006:
Universal Toilet Room




Outline




- 3.1. Combustibility, Firestopping, Raceways, Firewalls and Exposing Building Face (3.2.3.)
- 3.2. Fire Alarm Systems, Sprinkler Systems and Emergency Lighting
- 3.2. Mezzanines and Interconnected Floor Spaces
- 3.3. Safety within Floor Areas
- 3.4. Exits
- 3.5. Elevators
- 3.6. Service Facilities
- 3.7. Health Requirements
- 3.8. Barrier-Free Design
- 3.16. Shelf and Rack Storage Systems


- O. Reg. 349/06

Outline 


- 3.16 Shelf and Rack Storage Systems
New Section added to the building code

3.16. Shelf and Rack Storage Systems 

- Section 3.16. applies to self contained structural systems within buildings, having one or more elevated platforms or walkway levels for personnel access.
- Mezzanines are not part of a shelf and rack storage system.

3.16. Shelf and Rack Storage Systems - Height 

- Class I, II, III and IV Commodities
 - 18 m maximum
- Class I, II, and III Commodities
 - 24 m maximum, if fire alarm upgraded per Sentence 3.16.2.2.(1)
- Group A, B and C Plastics and Rubber Tires
 - 7 m maximum, and solid floors



3.16. Shelf and Rack Storage Systems



- 3.16.1.3. Construction
 - Part 4 Design
 - Steel
- 3.16.1.4. Signs
 - Maximum loading
 - No Smoking
- 3.16.1.5. Lighting
 - 50 lx
 - Emergency lighting
- 3.16.1.6. Sprinklers
 - NFPA 13 or Appropriate Standard
- 3.16.1.7. Exits and Means of Egress
 - Minimum 2 exits with exceptions



Outline



- 3.1. Combustibility, Firestopping, Raceways, Firewalls and Exposing Building Face (3.2.3.)
- 3.2. Fire Alarm Systems, Sprinkler Systems and Emergency Lighting
- 3.2. Mezzanines and Interconnected Floor Spaces
- 3.3. Safety within Floor Areas
- 3.4. Exits
- 3.5. Elevators
- 3.6. Service Facilities
- 3.7. Health Requirements
- 3.8. Barrier-Free Design
- 3.16. Shelf and Rack Storage Systems
- O. Reg. 349/06

Outline



- O. Reg. 349/06
 - Clause 3.1.2.5.(1)(a)
 - Sentence 3.1.8.8.(8)
 - Sentence 3.2.5.13.(2)
 - Sentence 3.3.3.3.(5)

**3.1.2.5.(1)
Group B Div. 3 Occupancies**



- In Clause 3.1.2.5.(1)(a), *dwelling unit* has been replaced by *suite*.

**3.1.8.8.(8)
Fire Dampers Waived**



- Waiver of fire dampers in a fire separation in certain small Group B, Division 3 occupancies where a fire alarm system and duct-type smoke detectors are provided to prevent smoke circulation.

**3.2.5.13.
Automatic Sprinkler Systems**



- Sentence 3.2.5.13.(2) has been revised to allow the NFPA 13 R standard for certain small B-3 occupancies.

**3.3.3.3.
Corridors**



- **New Sentence 3.3.3.3.(5)**
- Corridors in certain small Group B, Division 3 occupancies are exempted from the 1 650 mm width requirement.

Further Information



e-mail: codeinfo@mah.gov.on.ca

www.obc.mah.gov.on.ca
