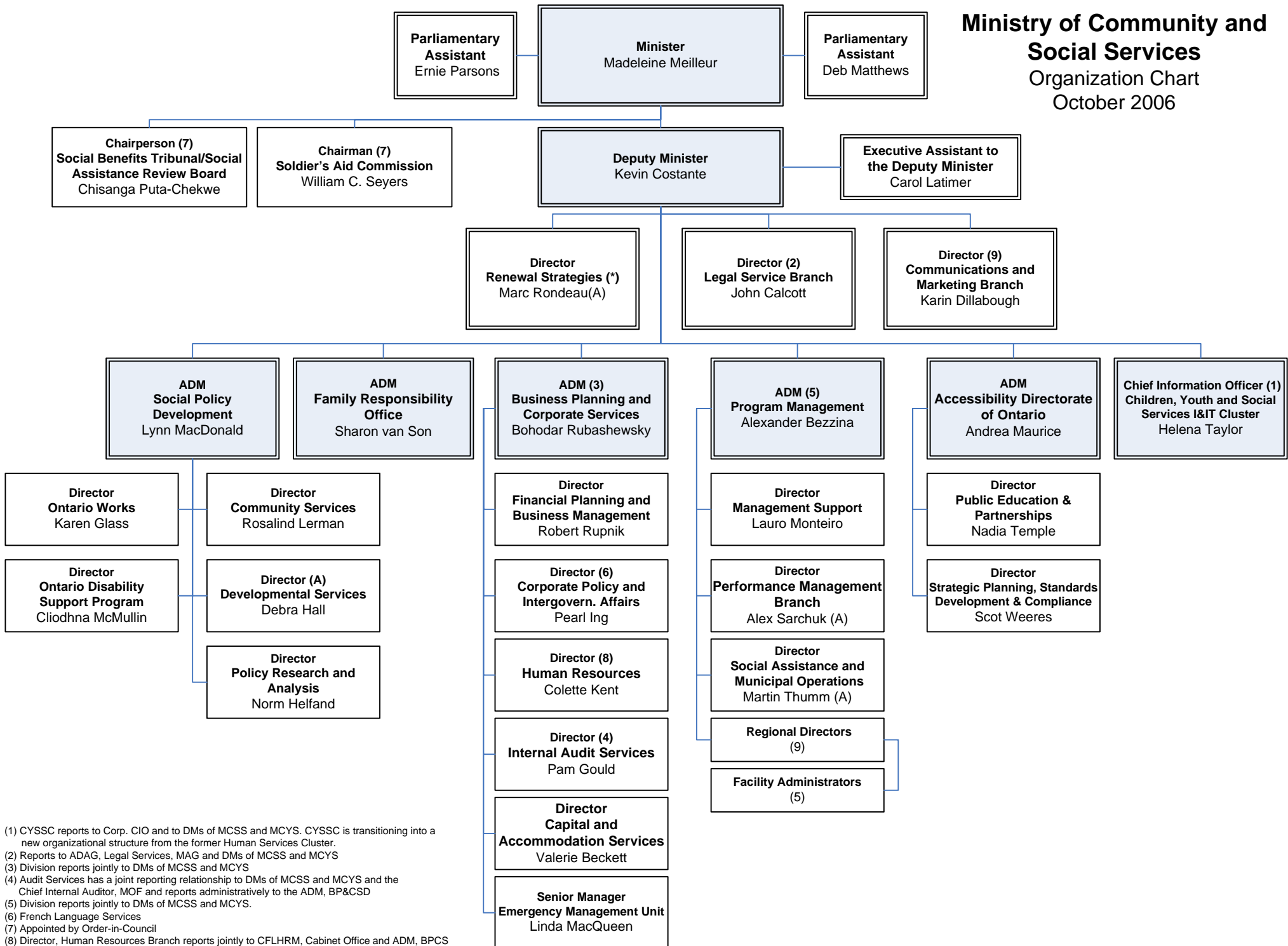


Ministry of Community and Social Services

Organization Chart

October 2006



(1) CYSSC reports to Corp. CIO and to DMs of MCSS and MCYS. CYSSC is transitioning into a new organizational structure from the former Human Services Cluster.
 (2) Reports to ADAG, Legal Services, MAG and DMs of MCSS and MCYS
 (3) Division reports jointly to DMs of MCSS and MCYS
 (4) Audit Services has a joint reporting relationship to DMs of MCSS and MCYS and the Chief Internal Auditor, MOF and reports administratively to the ADM, BP&CSD
 (5) Division reports jointly to DMs of MCSS and MCYS.
 (6) French Language Services
 (7) Appointed by Order-in-Council
 (8) Director, Human Resources Branch reports jointly to CFLHRM, Cabinet Office and ADM, BPCS
 (9) Director, CMB dual reporting to DM and the DM Communications, Cabinet
 (*) Temporary Position