

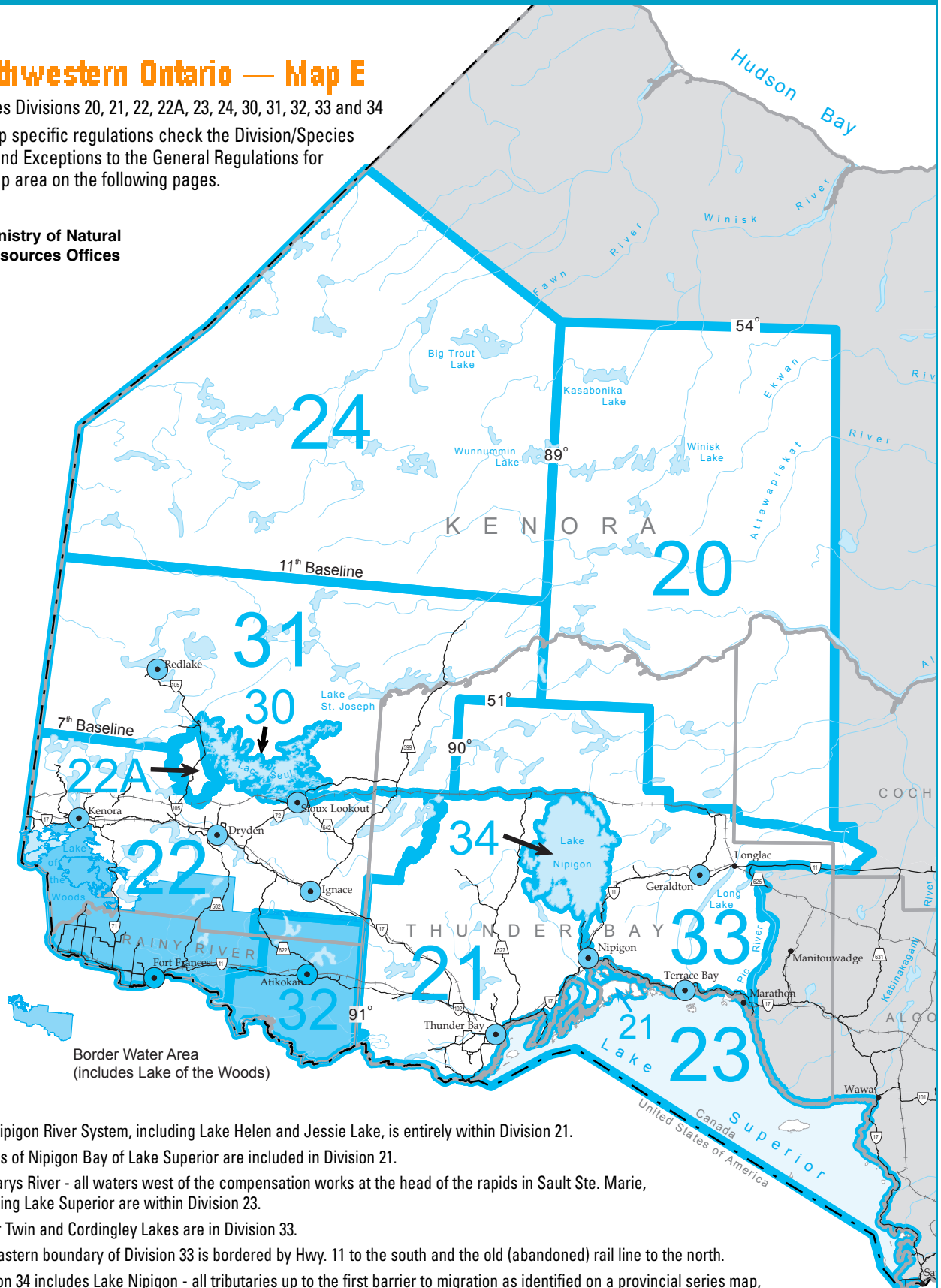
# NORTHWESTERN ONTARIO – MAP E

## Northwestern Ontario — Map E

Includes Divisions 20, 21, 22, 22A, 23, 24, 30, 31, 32, 33 and 34

For map specific regulations check the Division/Species Table and Exceptions to the General Regulations for this map area on the following pages.

● Ministry of Natural Resources Offices



Border Water Area  
(includes Lake of the Woods)

### NOTE:

- The Nipigon River System, including Lake Helen and Jessie Lake, is entirely within Division 21.
- Islands of Nipigon Bay of Lake Superior are included in Division 21.
- St. Marys River - all waters west of the compensation works at the head of the rapids in Sault Ste. Marie, including Lake Superior are within Division 23.
- Lower Twin and Cordingley Lakes are in Division 33.
- The eastern boundary of Division 33 is bordered by Hwy. 11 to the south and the old (abandoned) rail line to the north.
- Division 34 includes Lake Nipigon - all tributaries up to the first barrier to migration as identified on a provincial series map, all waters on the islands and Forgan, Bonner, Little Bonner and Jackpot Lakes.
- Border waters area includes Lake of the Woods, Rainy River, Rainy Lake and waters included in the dark blue shaded area of this map in Division 22 and Division 32 (see Border Waters, page 72).

# Northwestern Ontario (Map E) Division/Species Table



**FISHING LICENCE LIMITS:**  
**S** Sport Fishing  
**C** Conservation Fishing

**Open Seasons (all dates inclusive) - Catch, Possession and Size Limits**  
**You MUST check the Exceptions on pages 75 to 82 for additional regulations on specific water bodies**

See Map E  
on Page 67

SPECIES	Division 20	Division 21	Division 22/22A	Division 23	Division 24
<b>Walleye &amp; Sauger</b> or any combination	Jan. 1 to Apr. 14 & 3rd Sat. in May to Dec. 31 S - four (4) in one day C - two (2) in one day Size Limit: • only one (1) greater than 46 cm (18.1 in.)	Same as Div. 20	Same as Div. 20 Non-residents fishing in the border waters area refer to page 72.	Jan. 1 to Apr. 14 & 3rd Sat. in May to Dec. 31 S - three (3) in one day C - two (2) in one day	Jan. 1 to Apr. 14 & 3rd Sat. in May to Dec. 31 S - four (4) in one day C - two (2) in one day Size Limit: • only one (1) greater than 46 cm (18.1 in.)
<b>Largemouth &amp; Smallmouth Bass</b> or any combination	<b>Open all year*</b> S - Dec. 1 to June 30, two (2) in one day less than 35 cm (13.8 in.); July 1 to Nov. 30, four (4) in one day (no size limit) C - Dec. 1 to June 30, one (1) in one day less than 35 cm (13.8 in.); July 1 to Nov. 30, two (2) in one day (no size limit)	Same as Div. 20	Same as Div. 20	<b>Open all year*</b> S - six (6) in one day C - two (2) in one day	Same as Div. 20
<b>Northern Pike</b>	<b>Open all year*</b> S - four (4) in one day C - two (2) in one day Size Limit: • zero (0) between 70 - 90 cm (27.5 - 35.4 in.) and only one (1) greater than 90 cm (35.4 in.)	Same as Div. 20	Same as Div. 20	<b>Open all year*</b> S - six (6) in one day C - two (2) in one day	Same as Div. 20
<b>Muskellunge</b>	3rd Sat. in June to Dec. 15 S - one (1) per day C - zero (0) Size Limit: • minimum length 91 cm (36 in.)	Same as Div. 20	3rd Sat. in June to Dec. 15 S - one (1) per day C - zero (0) Size Limit: • minimum length 102 cm (40 in.)	Same as Div. 20	3rd Sat. in June to Dec. 15 S - one (1) per day C - zero (0) Size Limit: • minimum length 91 cm (36 in.)
<b>Yellow Perch</b>	<b>Open all year*</b> S - fifty (50) in one day C - twenty-five (25) in one day	Same as Div. 20	Same as Div. 20	<b>Open all year*</b> S - no limit C - no limit	Same as Div. 20
<b>Crappie</b>	<b>Open all year*</b> S - fifteen (15) in one day C - ten (10) in one day	Same as Div. 20	Same as Div. 20	<b>Open all year*</b> S - no limit C - no limit	Same as Div. 20
<b>Brook Trout†</b>	Jan. 1 to Labour Day S - five (5) in one day C - two (2) in one day Size Limit: • only one (1) greater than 30 cm (11.8 in.)	Last Sat. in Apr. to Labour Day S - five (5) in one day C - two (2) in one day Size Limit: • only one greater than 30 cm (11.8 in.)	<b>Open all year*</b> S - five (5) in one day C - two (2) in one day	<b>Last Sat. in Apr. to Labour Day</b> S - one (1) in one day C - zero (0) in one day Size Limit: • minimum length 56 cm (22 in.)	Jan. 1 to Sept. 30 S - five (5) in one day C - two (2) in one day

SPECIES	Division 20	Division 21	Division 22/22A	Division 23	Division 24
<b>Brown Trout†</b>	Jan. 1 to Sept. 15 S - five (5) in one day C - two (2) in one day	Same as Div. 20	Same as Div. 20	Open all year* S - five (5) in one day C - two (2) in one day	Jan. 1 - Sept. 30 S - five (5) in one day C - two (2) in one day
<b>Rainbow Trout†</b>	Open all year* S - five (5) in one day C - two (2) in one day	Same as Div. 20 Exception - Lake Superior Tributaries	Same as Div. 20	Open all year* East of the Pic River: S - two (2) in one day C - one (1) in one day West of the Pic River: S - one (1) in one day C - one (1) in one day	Same as Div. 20
<b>Lake Trout†</b>	Jan. 1 to Sept. 30 S - two (2) in one day Size Limit: • only one (1) over 56 cm (22 in.) from Sept. 1 - Sept. 30 C - one (1) in one day	Feb. 15 to Mar. 15 & 4th Sat. in May to Sept. 30 S - two (2) in one day Size Limit: • only one (1) over 56 cm (22 in.) from Sept. 1 - Sept. 30 C - one (1) in one day	Same as Div. 20 Non-residents fishing in the border waters area refer to page 72	Jan. 1 to Sept. 30 & Dec. 1 to Dec. 31 S - three (3) in one day C - one (1) in one day	Open all year* S - two (2) in one day Size Limit: • only one (1) over 56 cm (22 in.) from Sept. 1 - Sept. 30 C - one (1) in one day
<b>Splake†</b>	Open all year* S - five (5) in one day C - two (2) in one day	Open all year* S - five (5) in one day C - two (2) in one day	Same as Div. 20	Jan. 1 to Sept. 30 & Dec. 1 to Dec. 31 S - three (3) in one day C - two (2) in one day	Open all year* S - five (5) in one day C - two (2) in one day
<b>Pacific Salmon†</b> (Chinook, Coho and Pink Salmon)	Open all year* S - five (5) in one day C - two (2) in one day	Same as Div. 20	Same as Div. 20	Same as Div. 20	Same as Div. 20
<b>Atlantic Salmon†</b>	Jan. 1 to Sept. 30 S - one (1) in one day C - zero (0)	Same as Div. 20	Same as Div. 20	Same as Div. 20	Same as Div. 20
<b>Whitefish</b>	Open all year* S - twenty-five (25) in one day C - twelve (12) in one day	Same as Div. 20	Same as Div. 20	Same as Div. 20	Same as Div. 20
<b>Sturgeon</b>	Jan. 1 to May 14 & June 15 to Dec. 31 S - one (1) in one day C - zero (0)	Jan. 1 to May 15 & June 30 to Dec. 31 S - one (1) in one day C - zero (0) Size Limit: • minimum length 114 cm (45 in.)	Jan. 1 to May 15 & June 30 to Dec. 31 S - one (1) in one day C - zero (0) Size Limit: • minimum length 114 cm (45 in.)	Open all year* S - one (1) in one day C - zero (0)	Same as Div. 20

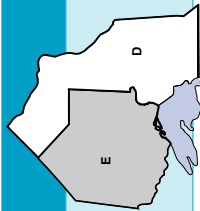
Note: Species NOT listed above (except for bait-fish) generally have a year round open season and no catch and possession limits although seasons and limits for other species may be in place in some areas. Check in the "Exceptions to the General Regulations" or with the local MNR office. For information on bait-fish restrictions, see page 5.

Please see definitions for Size Limits and Daily Catch and Possession Limits on the following table.

Non-Residents fishing in the Border Waters area please refer to pages 72 and 73.

\*except Dec. 24

# Northwestern Ontario (Map E) Division/Species Table



**FISHING LICENCE LIMITS:**  
**S** Sport Fishing  
**C** Conservation Fishing

**Open Seasons (all dates inclusive) - Catch, Possession and Size Limits**  
**You MUST check the Exceptions on pages 75 to 82 for additional regulations on specific water bodies**

See Map E on Page 67

SPECIES	Division 30	Division 31	Division 32	Division 33	Division 34
<b>Walleye &amp; Sauger</b> or any combination	<b>Jan. 1 to Apr. 14 &amp; 3rd Sat. in May to Dec. 31</b> <b>S</b> - four (4) in one day <b>C</b> - two (2) in one day Size Limit: • zero (0) between 46 and 53 cm (18.1 - 20.8 in.) and only one (1) greater than 53 cm (20.8 in.)	<b>Jan. 1 to Apr. 14 &amp; 3rd Sat. in May to Dec. 31</b> <b>S</b> - four (4) in one day <b>C</b> - two (2) in one day Size Limit: • only one (1) greater than cm 46 (18.1 in)	Same as Div. 31  Non-residents fishing in the border waters area refer to page 72.	Same as Div. 31	<b>Jan. 1 to Apr. 14 &amp; June 10 to Dec. 31</b> <b>S</b> - four (4) in one day <b>C</b> - two (2) in one day Size Limit: • only one (1) greater than 46 cm (18.1 in.)
<b>Largemouth &amp; Smallmouth Bass</b> or any combination	<b>Open all year*</b> <b>S</b> - Dec.1 to June 30, two (2) in one day less than 35 cm (13.8 in.); July 1 to Nov. 30, four (4) in one day (no size limit) <b>C</b> - Dec.1 to June 30, one (1) in one day less than 35 cm (13.8 in.); July 1 to Nov. 30, two (2) in one day (no size limit)	Same as Div. 30	Same as Div. 30	Same as Div. 30	Same as Div. 30
<b>Northern Pike</b>	<b>Open all year*</b> <b>S</b> - four (4) in one day <b>C</b> - two (2) in one day Size Limit: • zero (0) between 70 and 90 cm (27.5–35.4 in.) and only one (1) greater than 90 cm (35.4 in.)	Same as Div. 30	Same as Div. 30	Same as Div. 30	<b>Jan. 1 to Apr. 14 &amp; 3rd Sat. in May to Dec. 31</b> <b>S</b> - four (4) in one day <b>C</b> - two (2) in one day Size Limit: • zero (0) between 70 and 90 cm (27.5–35.4 in.) and only one greater than 90 cm (35.4 in.)
<b>Muskellunge</b>	<b>3rd Sat. in June to Dec. 15</b> <b>S</b> - zero (0) <b>C</b> - zero (0) Catch and release only	<b>3rd Sat. in June to Dec. 15</b> <b>S</b> - one (1) per day <b>C</b> - zero (0) Size Limit: • minimum length 91 cm (36 in.)	<b>3rd Sat. in June to Dec. 15</b> <b>S</b> - one (1) per day <b>C</b> - zero (0) Size Limit: • minimum length 91 cm (36 in.)	<b>3rd Sat. in June to Dec. 15</b> <b>S</b> - one (1) per day <b>C</b> - zero (0) Size Limit: • minimum length 91 cm (36 in.)	<b>3rd Sat. in June to Dec. 15</b> <b>S</b> - one (1) per day <b>C</b> - zero (0) Size Limit: • minimum length 91 cm (36 in.)
<b>Yellow Perch</b>	<b>Open all year*</b> <b>S</b> - fifty (50) in one day <b>C</b> - twenty-five (25) in one day	Same as Div. 30	Same as Div. 30	Same as Div. 30	Same as Div. 30
<b>Crappie</b>	<b>Open all year*</b> <b>S</b> - fifteen (15) in one day <b>C</b> - ten (10) in one day	Same as Div. 30	Same as Div. 30	Same as Div. 30	<b>Open all year*</b> <b>S</b> - fifteen (15) in one day <b>C</b> - ten (10) in one day
<b>Brook Trout†</b>	<b>Open all year*</b> <b>S</b> - five (5) in one day <b>C</b> - two (2) in one day	<b>Jan. 1 to Sept. 15</b> <b>S</b> - five (5) in one day <b>C</b> - two (2) in one day	<b>Jan. 1 to Sept. 15</b> <b>S</b> - five (5) in one day <b>C</b> - two (2) in one day	<b>Jan. 1 to Labour Day</b> <b>S</b> - five (5) in one day <b>C</b> - two (2) in one day Size Limit: • only one greater than 30 cm (11.8 in.)	<b>Last Sat. in Apr. to Sept. 15</b> <b>S</b> - one (1) in one day <b>C</b> - zero (0) No possession of live brook trout Size Limit: • minimum length 56 cm (22 in.)

SPECIES	Division 30	Division 31	Division 32	Division 33	Division 34
<b>Brown Trout<sup>†</sup></b>	Jan. 1 to Sept. 15 S - five (5) in one day C - two (2) in one day	Jan. 1 to Sept. 30 S - five (5) in one day C - two (2) in one day	Same as Div. 30	Same as Div. 30	Same as Div. 30
<b>Rainbow Trout<sup>†</sup></b>	Open all year* S - five (5) in one day C - two (2) in one day	Same as Div. 30	Same as Div. 30	Same as Div. 30 Exception - Lake Superior Tributaries	Same as Div. 30
<b>Lake Trout<sup>†</sup></b>	Jan. 1 to Sept. 30 S - two (2) in one day Size Limit: • only one (1) over 56 cm (22 in.) from Sept. 1 - Sept. 30 C - one (1) in one day	Same as Div. 30	Same as Div. 30	Same as Div. 30	Mar. 1 to Sept. 30 S - two (2) in one day Size Limit: • only one (1) greater than 70 cm (27.5 in.) C - one (1) in one day No possession of live lake trout
<b>Splake<sup>†</sup></b>	Open all year* S - five (5) in one day C - two (2) in one day	Open all year* S - five (5) in one day C - two (2) in one day	Open all year* S - five (5) in one day C - two (2) in one day	Open all year* S - five (5) in one day C - two (2) in one day	Open all year* S - five (5) in one day C - two (2) in one day
<b>Pacific Salmon<sup>†</sup></b> (Chinook, Coho and Pink Salmon)	Open all year* S - five (5) in one day C - two (2) in one day	Same as Div. 30	Same as Div. 30	Same as Div. 30	Same as Div. 30
<b>Atlantic Salmon<sup>†</sup></b>	Jan. 1 to Sept. 30 S - one (1) in one day C - zero (0)	Same as Div. 30	Same as Div. 30	Same as Div. 30	Same as Div. 30
<b>Whitefish</b>	Open all year* S - twenty-five (25) in one day C - twelve (12) in one day	Same as Div. 30	Same as Div. 30	Same as Div. 30	Open all year* S - twenty-five (25) in one day C - twelve (12) in one day
<b>Sturgeon</b>	Jan. 1 to May 14 & June 15 to Dec. 31 S - one (1) in one day C - zero (0)	Same as Div. 30	Jan. 1 to May 15 & June 30 to Dec. 31 S - one (1) in one day C - zero (0)	Same as Div. 30	Same as Div. 30

**Note: Species NOT listed above (except for bait-fish) generally have a year round open season and no catch and possession limits although seasons and limits for other species may be in place in some areas. Check in the "Exceptions to the General Regulations" or with the local MNR office. For information on bait-fish restrictions, see page 5.**

\*except Dec. 24

### Size Limits

Unless otherwise stated, the length referred to is total length. (See page 4)

Unless otherwise stated, size restrictions listed above apply to both Sport Fishing and Conservation licences.

### Daily Catch and Possession Limits

Daily catch and possession limits will depend on the type of fishing licence you hold, the species and where they are caught and in some cases the size of fish.

The **catch** limit is the number of fish you are allowed to catch and keep in one day. The **possession** limit is the number you are allowed to have in your possession on hand, in cold storage, in transit, etc. Possession limits are the same as one day's catch limit except where otherwise specified.

**Store Meals** - Fish caught that day and eaten are counted as part of your daily catch limit.

### † Catch and Possession Limits for Salmon and Trout COMBINED

[Not exceeding individual species limits where otherwise stated]

- S • Lake Superior (Div. 23) - five (5) salmon and trout combined but not more than three (3) may be lake trout, splake and brook trout combined.
- All other Map E Divisions (20-22, 22A, 24 and 30-34) - five (5) salmon and trout combined.
- C • Two (2) in one day with not more than one (1) lake trout.

**Non-Residents fishing in the Border Waters area please refer to pages 72 and 73.**

# Northwestern Ontario Regulations for Border Waters

## Licences for Provincial Border Waters

Ontario-Manitoba Border: You may fish in the following lakes with either an Ontario or a Manitoba fishing licence: Div. 22 - Davidson, High, Mantario, and Ryerson Lakes; Div. 24 - Moar Lake; Div. 31 - Frances and Garner Lakes.

## Northwestern Ontario Border Waters

The Border Waters area includes Lake of the Woods (including Cul de Sac and Obabikion Lakes the Aulneau and Western Peninsulas), Rainy River (from Wheeler Point upstream to the Fort Frances dam), Rainy Lake (including the portion of the Seine River System upstream to the Crilly dam and Rainy River from Rainy Lake to the Fort Frances dam), and the remaining Fort Frances and Dryden District lakes. The following inland lakes are considered to fall entirely within the border waters area (blue shaded area on map below): Rowan, Katimiagagimik, Dibble, White Otter, Nora, Kanoshay, Pine, Elsie Lake, Guliver, Cloven, Campus, Fish, Adele, Portage, Pyramid, Mack, Saganagons, Amit, Moose Bay, Lower Scotch and four Unnamed Lakes situated at the following coordinates (49°12'N., 91°37'W.), (49°12'N., 91°56'W.), (49°12'N., 91°58'W.), and (48°22'N., 90°58'W.).

## Non-Residents

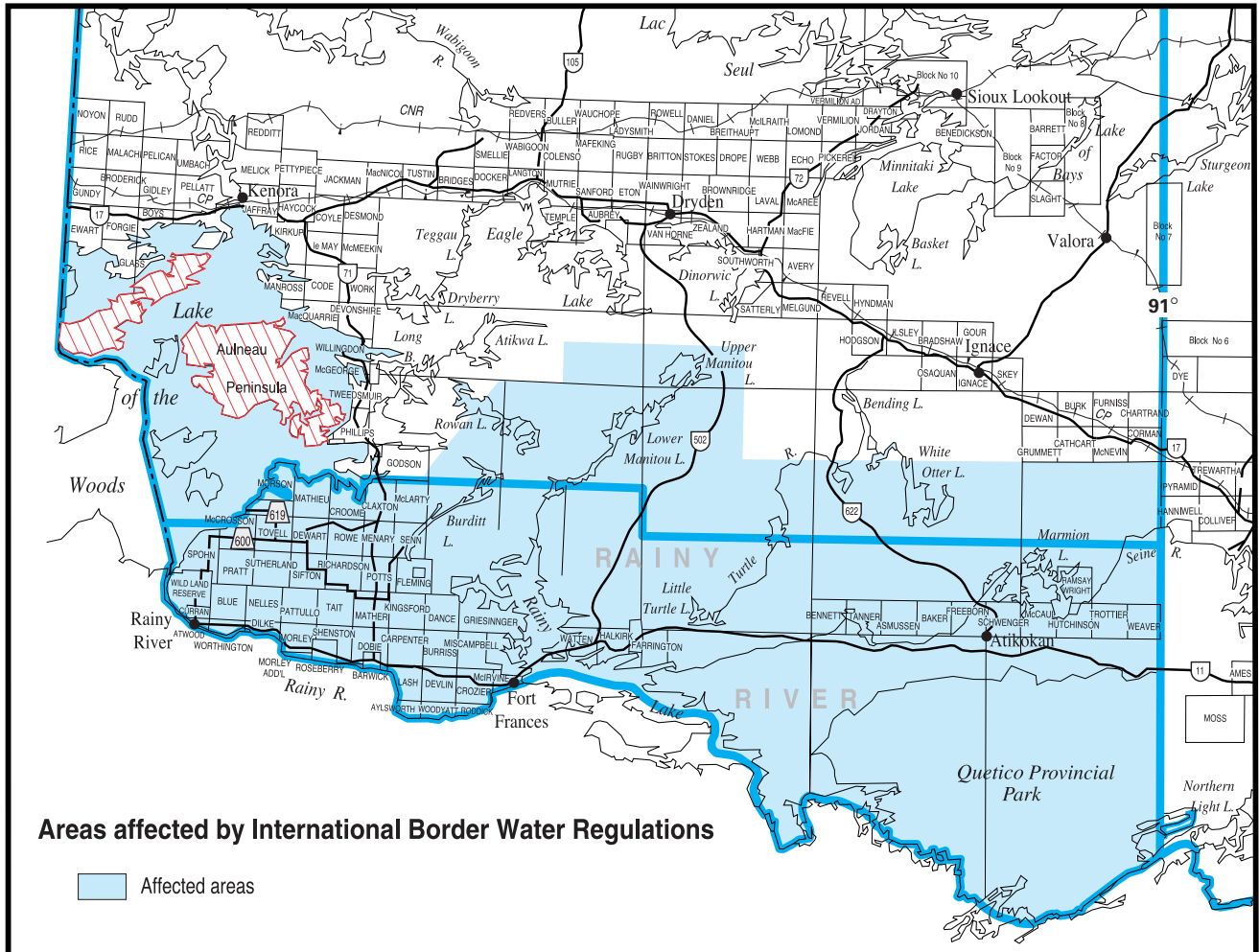
There are regulations in the Border Waters area that affect the number of walleye, sauger and lake trout that non-residents can catch and retain in one day and the total number that can be possessed at any time (refer to the table on page 73). For all other species, non-residents should refer to the catch and possession limits shown on the Division/Species Tables and the Exceptions to the General Regulations.

All non-residents of Canada need to be aware of the following:

- the catch and possession limits for walleye, sauger and lake trout (see page 73) affect all non-residents of Canada regardless of whether you are staying overnight in Canada or not;
- non-residents of Canada require an Ontario Non-Resident Sport Fishing Licence or an Ontario Non-Resident Conservation Fishing Licence to fish on the Ontario side of the International Border;

**NOTE:** Always check the Exceptions to the General Regulations on pages 75 to 82 for additional regulations specific to the water body you are fishing on.

**NOTE:** Areas outlined in red on the map below (Aulneau and Western Peninsulas) will be included in the International Border Waters regulations in 2006. Please direct any inquiries to the Kenora MHR District Office.



# Open Seasons and Limits for Non-residents in the Border Waters Area

Walleye and Sauger (or any combination)	Non-resident Sport Fishing Licence	Non-resident Conservation Fishing Licence
<p><b>Rainy Lake</b> (including the portion of the Seine River system upstream to the Crilly Dam AND the Rainy River from Rainy Lake downstream to the Fort Frances dam).</p> <p><b>Note:</b> For this area the size limits apply only to walleye. They do not apply to sauger.</p>	<p><b>Jan. 1 to Apr. 14 &amp; 3rd Sat. in May to Dec. 31</b></p> <p><b>Catch and retain in one day</b></p> <ul style="list-style-type: none"> <li>one (1) which must be greater than 35 cm (13.8 in.) and less than 45 cm (17.7 in.) OR greater than 70 cm (27.5 in.)</li> </ul> <p><b>Possession limit</b></p> <ul style="list-style-type: none"> <li>four (4) which must be greater than 35 cm (13.8 in.) and less than 45 cm (17.7 in.) OR greater than 70 cm (27.5 in.)</li> <li>only one (1) greater than 70 cm (27.5 in.)</li> </ul>	<p><b>Jan. 1 to Apr. 14 &amp; 3rd Sat. in May to Dec. 31</b></p> <p><b>Catch and retain in one day</b></p> <ul style="list-style-type: none"> <li>Same as for Non-resident sport fishing licence</li> </ul> <p><b>Possession limit</b></p> <ul style="list-style-type: none"> <li>two (2) which must be greater than 35 cm (13.8 in.) and less than 45 cm (17.7 in.) OR greater than 70 cm (27.5 in.)</li> <li>only one (1) greater than 70 cm (27.5 in.)</li> </ul>
<p><b>Rainy River</b> (from Wheeler's Point upstream to the Fort Frances Dam)</p>	<p><b>Jan. 1 to last day in Feb. and 3rd Sat. in May to Dec. 31</b></p> <p><b>Catch and retain in one day</b></p> <ul style="list-style-type: none"> <li>two (2) only one (1) greater than 46 cm (18.1 in.)</li> </ul> <p><b>Possession limit</b></p> <ul style="list-style-type: none"> <li>four (4) only one (1) greater than 46 cm (18.1 in.)</li> </ul> <p><b>Mar. 1 to Apr. 14</b></p> <p><b>Catch and possession limit</b></p> <ul style="list-style-type: none"> <li>two (2)</li> <li>zero (0) greater than 46 cm (18.1 in.)</li> </ul>	<p><b>Jan. 1 to last day in Feb. and 3rd Sat. in May to Dec. 31</b></p> <p><b>Catch and possession limit</b></p> <ul style="list-style-type: none"> <li>two (2) only one (1) greater than 46 cm (18.1 in.)</li> </ul> <p><b>Mar. 1 to Apr. 14</b></p> <p><b>Catch and possession limit</b></p> <ul style="list-style-type: none"> <li>two (2)</li> <li>zero (0) greater than 46 cm (18.1 in.)</li> </ul>
<p><b>Lake of the Woods including the Aulneau and Western Peninsulas, and Remaining Lakes in Dryden and Fort Frances MNR Districts</b> (includes Cul de Sac and Obabikon Lakes; excludes Shoal Lake)</p>	<p><b>Jan. 1 to Apr. 14 &amp; 3rd Sat. in May to Dec. 31</b></p> <p><b>Catch and retain in one day</b></p> <ul style="list-style-type: none"> <li>two (2) only one (1) greater than 46 cm (18.1 in.)</li> </ul> <p><b>Possession limit</b></p> <ul style="list-style-type: none"> <li>four (4) only one (1) greater than 46 cm (18.1 in.)</li> </ul>	<p><b>Jan. 1 to Apr. 14 &amp; 3rd Sat. in May to Dec. 31</b></p> <p><b>Catch and possession limit</b></p> <ul style="list-style-type: none"> <li>two (2) only one (1) greater than 46 cm (18.1 in.)</li> </ul>

Lake Trout	Non-resident Sport Fishing Licence	Non-resident Conservation Fishing Licence
<p><b>Lakes in the shaded area with the exception of Lake of the Woods and Cul de Sac Lake</b></p>	<p><b>Jan. 1 to Sept. 30</b></p> <p><b>Catch and retain in one day</b></p> <ul style="list-style-type: none"> <li>one (1)</li> </ul> <p><b>Possession limit</b></p> <ul style="list-style-type: none"> <li>two (2) only one (1) greater than 56 cm (22 in.) from Sept. 1 – Sept. 30</li> </ul>	<p><b>Jan. 1 to Sept. 30</b></p> <p><b>Catch and possession limit</b></p> <ul style="list-style-type: none"> <li>one (1)</li> </ul>

**NOTE:** Please also refer to the Exceptions to the General Regulations for the waters you are fishing.



# Northwestern Ontario

## General Notes

- Non-residents camping on Crown land in Fishing Divisions 20, 21, 22, 22A, 24, 30, 31, 33, and 34, except for the border waters area, are subject to Conservation Licence Limits.
- Div. 34 - you may not possess live lake trout or brook trout.
- A CITES permit is required to export Sturgeon from Canada, see page 4.
- **There are new resident and non-resident regulations for walleye and sauger in the Winnipeg River - refer to the Exceptions to the General Regulations for details.**

## Bait and Gear Restrictions

- You may not use or possess live fish for bait in:
  - Div. 24.
  - Certain waters of the territorial districts of Kenora and Thunder Bay.  
Check with the local MNR office for specific details.
  - Quetico Provincial Park.
- You may use and possess live fish for bait in Div. 20, north and south of the 11th Baseline.
- Div. 34 – Lake Nipigon - refer to Exceptions.
- It is illegal to possess live or dead smelt while recreational fishing in Divs. 22, 22A, 24, 30, 31 and 32.

## Additional Fishing Opportunities

### YEAR-ROUND OPEN SEASON

Location	Div.
<b>Lake Trout</b>	
<b>High Lake (49°42'N., 95°08'W.)</b>	22
<b>Brook Trout (These waters have no brook trout size limits.)</b>	
<b>Anteater Lake</b> - Territorial District of Kenora	22
<b>Bateman Lake</b> (48°13'N., 89°45'W.) - Conmee Twp.	21
<b>Bell Lake</b> - Devon Twp.	21
<b>Berglund Lake</b> (49°36'N., 91°39'W.)	22
<b>Blake's</b> (48°58'N., 88°28'W.) (formerly Big Squaw) Lake - Hele Twp.	21
<b>Birch Lake</b> (48°10'N., 90°07'W.) - Hardwick Twp.	21
<b>Bill Lake</b> (50°04'N., 93°58'W.) - Territorial District of Kenora	22
<b>Black Lake</b> - Pearson Twp.	21
<b>Blue Lake**</b> (50°20'N., 88°56'W.)	33
<b>Boobas Lake</b> (49°28'N., 87°08'W.)	33
<b>Butler Lake</b> - (49°28'N., 91°49'W.)	22
<b>Caribou Lake</b> - McTavish Twp.	21
<b>Caro Lake</b> (49°06'N., 88°58'W.)	21
<b>Clegge Lake</b> (48°45'N., 88°44'N.)	21
<b>Deer Lake</b> - Booth Twp.	21
<b>Devon Lake</b> (48°09'N., 89°51'W.) - Devon Twp.	21
<b>Devonline Lake</b> (48°09'N., 89°51'W.) - Devon Twp.	21
<b>Downy Lake</b> (48°14'N., 89°52'W.)	21
<b>Driftstone Lake</b> (48°55'N., 88°30'W.) - Hele Twp.	21
<b>Duchess Lake</b> (48°53'N., 88°35'W.) - Stirling Twp.	21
<b>East Emerson Lake*</b> (49°46'N., 94°11'W.) - Kenora District	22
<b>East Pennock Lake</b> (48°22'N., 89°56'W.) - Aldina Twp.	21
<b>Echo Lake</b> (48°20'N., 89°54'W.) - Mark's Twp.	21
<b>Elbow Lake</b> (48°10'N., 90°16'W.)	21
<b>Emerald Lake</b> (49°17'N., 91°24'W.)	22
<b>Emerson Lake*</b> (49°45'N., 94°11'W.) - Territorial District of Kenora	22
<b>Empire Lake**</b> (49°36'N., 87°57'W.) - Summer Twp.	33
<b>Five Minute Lake</b> (48°45'N., 88°10'W.)	21
<b>Float Lake</b>	21
<b>Forrest Lake</b> (48°08'N., 90°15'W.)	21
<b>Furcate Lake</b> (48°47'N., 88°46'W.) - Dorion Twp.	21
<b>Goddard Lake**</b> (49°42'N., 87°43'W.) - Walter Twp.	33
<b>Gold Lake</b> (48°30'N., 89°45'W.) - Conmee Twp.	21
<b>Golding Lake</b> (48°36'N., 89°14'W.) - Gorham Twp.	21
<b>Gordon Lake</b> (48°06'N., 89°42'W.) - Devon Twp.	21
<b>Han's Lake</b> (49°02.5'N., 88°36'W.) - McMaster Twp.	21
<b>Hartington Lakes #1, #2, and #3</b> (48°09'N., 89°57'W.)	21

Location	Div.
<b>Brook Trout (continued) (These waters have no brook trout size limits.)</b>	
<b>Hartley Lake</b> (49°28'N., 87°09'W.)	33
<b>Head Lake</b> (48°17'N., 90°10'W.) - Jean Twp.	21
<b>Highway Lake</b> - Territorial District of Kenora	22
<b>Hilder Lake</b> (49°47'N., 86°59'W.)	33
<b>Hindick Lake</b> (48°45'N., 88°43'W.) - Dorion Twp.	21
<b>Hoard Lake</b> - Fort Frances District	22
<b>Hob Lake</b> (49°30'N., 86°30'W.)	33
<b>Howard Lake**</b> (49°54'N., 94°07'W.) - Territorial District of Kenora	22
<b>Inwood Lake</b> (49°01'N., 90°27'W.) - Inwood Twp.	21
<b>Jeff Lake</b> (48°43'N., 88°40'W.) - McTavish Twp.	21
<b>Joan Lake</b> (48°06'N., 89°43'W.) - Devon Twp.	21
<b>Johnny Lake**</b> (50°17'N., 87°03'W.)	20
<b>Jo-Jo (Minnow) Lake</b> (50°10'N., 86°46'W.)	33
<b>Krisko Lake</b> (49°42'N., 91°13'W.)	22
<b>Lake #132</b> (49°38'N., 93°50'W.) - Territorial District of Kenora	22
<b>Lake #82E</b> (48°14'N., 89°55'W.) - Strange Twp.	21
<b>Lake E-11</b> (50°06'N., 86°27'W.)	33
<b>Larger Unnamed Lake</b> (50°19'N., 91°21'W.) - known as Mile 40 or FX17-11	31
<b>Lauries Lake #1</b> (48°15'N., 90°16'W.)	21
<b>Lauries Lake #2, 3 and 4</b> (48°14'N., 90°16'W.)	21
<b>Leana Lake</b> (49°50'N., 86°21'W.)	33
<b>Limestone Lake**</b> (49°07'N., 88°09'W.)	33
<b>Lismore Lakes #1 and 2</b> (48°09'N., 89°57'W.) - Lismore Twp.	21
<b>Little Addie Lake</b> (48°09'N., 90°25'W.)	21
<b>Little Arrow Lake</b> (48°08'N., 90°27'W.)	21
<b>Little Butter Lake</b> (49°27'N., 91°51'W.)	22
<b>Little Hawkeye Lake</b> (48°41'N., 89°27'W.) - Fowler Twp.	21
<b>Little Head Lake</b> (48°16'N., 90°08'W.) - Jean Twp.	21
<b>Little Moose Lake.</b>	31
<b>Little Moose Lake</b> - Territorial District of Kenora.	31
<b>Little Snowstorm Lake</b> (49°37'N., 91°43'W.)	22
<b>Liver Lake</b> (48°36'N., 88°56'W.)	21
<b>Lizard Lake</b> (48°14'N., 89°52'W.)	21
<b>Loch Muich Lake.</b>	21
<b>Lofquist Lake</b> (49°02'N., 88°20'W.) - Booth/Nipigon Twp.	21
<b>Lorne's Lake</b> (49°04'N., 88°36'W.) - Cockeram Twp.	21
<b>Lost Lake</b> (48°49'N., 88°41'W.) - Dorion Twp.	21
<b>Lower Moonshine Lake</b> (48°52'N., 88°36'W.) - Stirling Twp.	21
<b>Malborne Lake</b> (49°12'N., 88°25'W.) - Purdom Twp.	21
<b>Male Lake</b> (49°13'N., 88°22'W.) - Purdom Twp	21



Location	Div.
<b>Brook Trout (continued)</b> <b>(These waters have no brook trout size limits.)</b>	
<b>Marilyn Lake**</b> (49°15'N., 88°09'W.).	33
<b>Matson Lake</b> (48°06'N., 89°42'W.) - Pardee Twp.	21
<b>McAvay Lake**</b> (49°18'N., 88°06'W.).	33
<b>McKecknie Lake</b> (48°07'N., 90°15'W.)	21
<b>McLaurin Lake</b> (49°43'N., 91°12'W.)	22
<b>Melvin Lake</b> (48°42'N., 88°43'W.) - McTavish Twp.	21
<b>Middle Moonshine Lake</b> (49°52.5'N., 88°36'W.) - Stirling Twp.	21
<b>Middleton Lake</b> (49°03'N., 86°29'W.).	33
<b>Mile 30 Lake</b> (50°05'N., 86°28'W.).	33
<b>Moonshine Lake</b> (48°53'N., 88°36'W.) - Stirling Twp.	21
<b>Morrison Lake</b> (48°11'N., 89°53'W.) - Fraleigh Twp.	21
<b>Mountain Lake</b> - South of Armstrong (50°10'N., 89°06'W.).	21
<b>Mutt Lake</b> (48°43'N., 88°40'W.) - McTavish Twp.	21
<b>No Good Lake</b> (49°03'N., 88°21'W.) - Booth Twp.	21
<b>Nyilas Lake</b> (50°03'N., 92°04'W.) - Territorial District of Kenora	22
<b>O'Dell Lake</b> (49°25'N., 91°36'W.)	22
<b>Paradise Lake</b> (48°41'N., 88°49'W.).	21
<b>Peridotite Lake</b> (48°29'N., 89°47'W.).	21
<b>Peter's (formerly Little Squaw) Lake</b> (48°58'N., 88°28'W.) - Hele Twp.	21
<b>Post Lake</b> (48°29'N., 89°47'W.).	33
<b>Ranger Lake</b> (48°23'N., 89°52'W.) - Marks Twp.	21
<b>Reguly Lake</b> (49°38'N., 91°43'W.).	22
<b>Rock Lake</b> (48°11'N., 90°06'W.) - Hardwick Twp.	21
<b>Roll Lake (formerly Lake 19, 48°38'N., 88°56'W.)</b>	21
<b>Sand Lake North</b> (48°15'N., 90°14'W.).	21
<b>Scott Lake #2</b> (48°10'N., 90°18'W.).	21
<b>Secret Lake**</b> (50°17'N., 89°00'W.).	33
<b>Setting Duck Lake</b> (49°41'N., 87°22'W.).	33
<b>Shoepac Lake**</b> (49°01'N., 88°21.5'W.) - Nipigon Twp.	21
<b>Shrimp Lake</b> (49°33'N., 91°38'W.)	22

Location	Div.
<b>Brook Trout (continued)</b> <b>(These waters have no brook trout size limits.)</b>	
<b>Sitch Lake</b> (49°39'N., 90°39'W.) - Ames Twp.	21
<b>Snowfall Lake</b> - Territorial District of Kenora	22
<b>Snowstorm Lake</b> (49°37'N., 91°43'W.).	22
<b>Snyder Lake</b> - Territorial District of Kenora	22
<b>South Castle Lake</b> (48°11'N., 90°04'W.) - Hardwick Twp.	21
<b>Spring Lake**</b> (49°41'N., 87°32'W.).	33
<b>Stillwater Lake</b> (49°02'N., 88°24'W.) - Nipigon Twp.	21
<b>Sunset Lake</b> (48°44'N., 88°40'W.) - Dorion Twp.	21
<b>Tartan Lake</b> (48°42'N., 88°40'W.).	21
<b>Tear Drop Lake</b> (48°37'N., 90°22'W.) - Haines Twp.	21
<b>Ten Minute Lake</b> (48°22'N., 89°52'W.) - Marks Twp.	21
<b>Thomson Lake</b> - Stirling Twp.	21
<b>Thompson Lakes</b> (48°18'N., 89°35'W.) - Scoble Twp.	21
<b>Thunder Lake</b> (48°30'N., 89°46'W.) - Adrian Twp.	21
<b>Tox Lake</b> (49°38'N., 94°15'W.) - Territorial District of Kenora	22
<b>Unnamed Lake #9</b> (49°58'N., 88°29'W.) - Hele Twp.	21
<b>Unnamed Lake #19</b> (49°02.5'N., 88°27'W.) - Hele Twp.	21
<b>Unnamed Lake #20</b> (49°01'N., 88°29'W.) - Hele Twp.	21
<b>Unnamed Lake #21</b> (49°00'N., 88°28'W.) - Hele Twp.	21
<b>Unnamed Lake #22</b> (48°58'N., 88°32'W.) - Hele Twp.	21
<b>Unnamed Lake #34</b> (49°02'N., 88°25'W.) - Nipigon Twp.	21
<b>Unnamed Lake #39</b> (48°56.5'N., 88°25.5'W.) - Nipigon Twp.	21
<b>Unnamed Lake</b> (51°38'N., 89°55'W.) - known as Whiz Lake.	31
<b>Waller Lake</b> (48°36'N., 89°08'W.) - MacGregor Twp.	21
<b>Wasp Lake</b> (48°13'N., 90°12'W.).	21
<b>West Arrow Lake</b> (48°08'N., 90°26'W.).	21
<b>West MacDonald Lake</b> (48°50'N., 88°39'W.) - Dorion Twp.	21
<b>West Pennock Lake.</b>	21

\* Except December 25. \*\* Except December 24.

## Exceptions to the General Regulations (Northwestern Ontario)

### ALL DATES INCLUSIVE

General Areas of Northwestern Ontario (Map E)	Div.	Exceptions
All tributaries to Lake Superior in Division 21 described as follows: 1. Current River downstream from the Boulevard Lake Dam (48°27'N., 89°11'W.); 2. Coldwater Creek downstream from Ouimet Canyon Road (48°45'N., 88°36'W.); 3. Spring Creek downstream from Dorion Fish Culture Station (48°50'N., 88°36'W.); 4. Wolf River downstream from the lower falls (48°50.58'N., 88°34.87'W.); 5. Black Sturgeon River downstream from the Dam (48°55'N., 88°23'W.); 6. Nipigon River, entire length including Jessie Lake and Lake Helen. 7. From the Pigeon River to the Nipigon River, all tributaries lying downstream from Hwy. 61 and Hwy. 11/17, including Sibley and Black Bay Peninsula and all islands and excluding those waters listed in 1 to 5 above.	21	Brook trout open from last Sat. in Apr. – Labour Day. Brook trout catch and possession limit of one (1), which must be greater than 56 cm (22 in.) in length, Conservation licence limit of zero (0).
All tributaries to Lake Superior in Division 33 described as follows: 1. Jackfish River downstream from the falls (49°03'N., 88°06'W.); 2. Jackpine River downstream from Wilson's Falls (49°07'N., 87°53'W.); 3. Cypress River downstream from falls (48°57'N., 87°50'W.); 4. Cypress River West Tributary downstream from the falls (48°57'N., 87°51'W.); 5. Gravel River downstream from the falls (48°55'N., 87°21'W.); 6. Little Gravel River downstream from the falls (48°56'00.8"N., 87°46'35.9"W.); 7. Steel River downstream from the Golden Staircase (outflow of Santoy Lake); 8. McKellar River downstream from the falls 150 m north of Highway 17; 9. Prairie River downstream from the first hydro line north of Lake Superior; 10. From the east shore of the Nipigon River to Camp 81 Road, all tributaries lying downstream from Highway 17, excluding those listed in items 1 to 9 above; 11. From Camp 81 Road east to the Whitesand River (48°50'N., 87°24'W.), all tributaries lying downstream from the first hydro line north of Lake Superior, excluding those listed in items 1 to 9 above; 12. From the Whitesand River to Marathon, all tributaries lying downstream from Highway 17, excluding those listed in items 1 to 9 above.	33	Brook trout open from last Sat. in Apr. – Labour Day. Brook trout catch and possession limit of one (1), which must be greater than 56 cm (22 in.) in length, Conservation licence limit of zero (0).
All tributaries to Lake Superior in Div. 21 and Div. 33; except the McIntyre and Neebing Rivers.	21 & 33	Rainbow trout catch and possession limit of one (1), Conservation licence limit of one (1). See Waters of Northwestern Ontario for special regulations for the McIntyre and Neebing Rivers.
Quetico Provincial Park.	32	Live fish may not be used as bait or possessed for use as bait. Non-residents fishing in the border waters area, refer to page 72.

General Areas of Northwestern Ontario (Map E)	Div.	Exceptions
Sydney Lake Area - North Kenora Pilot Project area. Waters within boundaries of Manitoba/Ontario border to south shore of the English River System including Goshawk and Tourist Lakes to Separation Rapids Bridge and South Pakwash Road to Leano Lake, south boundary of Woodland Caribou Provincial Park to Manitoba/Ontario border.	22 & 31	Lake trout catch and possession limit of one (1), maximum size of 56 cm (22 in.). Anglers are restricted to conservation licence limits for walleye and sauger, northern pike, muskellunge largemouth and smallmouth bass, brook trout, whitefish and crappie.

Waters of Northwestern Ontario (Map E)	Div.	Exceptions
Abram Lake	22	See Minnitaki Lake.
Adrian Lake - Adrian Twp.	21	No brook trout size restrictions.
Agimak River and Little Indian Lake downstream from Sandbar Lake to the mouth of Agimak River where it enters Indian Lake - Gour Twp.	22	Fish sanctuary - no fishing from Apr. 15 - June 14.
Albany River - from Achapi Lake to 89°00' W.	31	Brook trout open from Jan. 1 - Aug. 31. Brook trout catch and possession limit of two (2); minimum length of 51 cm (20 in.).
Aldina Lake - Aldina Twp.	21	No brook trout size restrictions.
Alford Lake - Graves Twp.	31	Fish sanctuary - closed all year.
Ambrose Lake (48°55'N., 87°21'W.)	33	No brook trout size restrictions.
Angel Lake (48°46'N., 86°52'W.)	33	No brook trout size restrictions.
Ara Lake (50°33'N., 87°28'W.)	20	Yellow perch catch and possession limit of twenty-five (25).
Argon Lake Grand Trunk Pacific Block 2	21	Fish sanctuary - closed all year.
Arrow River - Waters of Northwestern Ontario (Map E)	21	Brown trout open from last Sat. in Apr. - Sept. 15; catch and release only. Barbless hooks must be used. Live fish cannot be used as bait or possessed for use as bait. Arrow Lake to Robbins/Hartington Township Line: only artificial flies can be used as bait. Robbins/Hartington Township line to Pigeon River: only artificial lures can be used as bait.
Barnard Creek - (50°06'N., 91°51'W.) between Fourbay Lake and Eady Lake.	22	Fish sanctuary - no fishing from Apr. 15 - June 14.
Barnston Lake (50°39'N., 93°30'W.)	31	Muskellunge minimum length of 102 cm (40 in.).
Beak Lake (49°15'N., 92°16'W.)	22	Fish sanctuary - no fishing from Jan. 1 - Fri. before 3rd Sat. in May.
Bews Lake (48°57'N., 87°40'W.)	33	No brook trout size restrictions.
Big Sand Lake (50°08'N., 94°38'W.)	22	See Winnipeg River System.
Big Vermilion Lake (50°03'00"N., 92°15'00"W.)	22	Lake trout must be less than 45 cm (17.7 in.) or greater than 60 cm (23.6 in.) in length and only one (1) may be greater than 60 cm (23.6 in.) in length. <b>Artificial lures only. No bait allowed. Only one line may be used when angling through the ice.</b>
Black Sturgeon Lake	21	Lake trout and splake closed all year.
Black Sturgeon River downstream of the first set of rapids (48°52'30"N., 88°20'20"W.) to Lake Superior	21	Walleye closed all year.
Bluebill Lake (48°57'N., 87°40'W.)	33	No brook trout size restrictions.
Borealis Lake (49°01'N., 86°44'W.)	33	Fish sanctuary - closed all year 2005, & 2006. Live fish may not be used as bait or possessed for use as bait. Only barbless hooks permitted.
Botsford Lake	22	See Minnitaki Lake.
Brace Lake (50°34'N., 87°19'W.)	20	Yellow perch catch and possession limit of twenty-five (25).
Bruce Lake - from Bruce Creek at Hwy. 105 north to, and including, the south half of Bruce Lake.	31	Fish sanctuary - no fishing from Apr. 15 - May 31.
Buckaday Lake (48°58'N., 87°45'W.) and headwater lakes.	33	Brook trout open from last Sat. in Apr. - Labour Day.
Buhl Lake (49°17'N., 86°19'W.)	33	Fish sanctuary - no fishing from Jan. 1 - Fri. before 3rd Sat. in May.
Burditt Lake (48°57'N., 93°46'W.)	22	Muskellunge minimum length of 122 cm (48 in.).
Butler Lake (49°41'N., 92°40'W.)	22	Muskellunge minimum length of 137 cm (54 in.).
Camp Creek (49°28'N., 92°42'W.) and part of Indian Lake - Gour Twp.	22	Fish sanctuary - no fishing from Apr. 15 - June 14.
Cavern Lake (48°50'N., 88°44'W.) - Dorion Twp.	21	No brook trout size restrictions.
Cedar Lake (50°12'N., 93°18'W.)	22A	Muskellunge minimum length of 137 cm (54 in.).
Cedar Lake (Louise Rapids, Nelson Lake).	22A	Fish sanctuary - no fishing from Apr. 1 - May 31.
Cedarbough Lake and all connecting streams to Little Vermilion Lake in Jordan, Drayton, Vermilion and Pickerel Twps.	22	Lake trout closed all year.
Chub Lake - Scoble Twp.	21	No brook trout size restrictions.
Clearwater Bay.	22	See Lake of the Woods.
Cliff Lake - at Hwy. 105 (50°10'N., 93°18'W.)	22A	Muskellunge minimum length of 137 cm (54 in.).
Cloudlet Lake and connecting streams	22	Fish sanctuary - no fishing from Jan. 1 - Fri. before 3rd Sat. in June & Dec. 1 - Dec. 31. Catch and release only for muskellunge, northern pike and smallmouth bass. Artificial lures with a single barbless hook must be used.
Cosgrave Lake (49°14'N., 87°56'W.)	33	Fish sanctuary - no fishing from Jan. 1 - June 30 & Sept. 1 - Dec. 31.
Crook Lake (49°04'N., 92°08'W.)	32	Fish sanctuary - no fishing from Feb. 1 - June 30 & Aug. 1 - Dec. 31.
Crowrock Lake (48°58'N., 91°49'W.)	32	Walleye catch and possession limit of two (2), not more than one (1) greater than 46 cm (18.1 in.) in length.
Crowrock Lake upstream from the narrows at 49°00'00"N., 91°43'50"W.	32	Fish sanctuary - no fishing from Apr. 1 - June 14.
Cul de Sac Lake - Kenora District.	22	See Lake of the Woods - Clearwater Bay.
Cushing Lake.	21	Walleye must be 33cm (13.0 in.) in length or greater and only one (1) may be greater than 46 cm (18.1 in.). Northern pike open from Jan. 1 - Apr. 14 & 2nd Sat. in May - Dec. 31.

<b>Waters of Northwestern Ontario (Map E)</b>	<b>Div.</b>	<b>Exceptions</b>
Dashwa Lake (48°56'N., 91°45'W.).	32	Walleye catch and possession limit of two (2), not more than one (1) greater than 46 cm (18.1 in.) in length.
Despair Lake (48°53'N., 93°40'W.).	22	Muskellunge minimum length of 122 cm (48 in.).
Dew Lake (48°50'N., 86°59'W.).	33	No brook trout size restrictions.
Dinorwic Lake (49°37'N., 92°33'W.).	22	Muskellunge minimum length of 137 cm (54 in.).
Dovetail Lake.	32	Walleye catch and possession limit of two (2), not more than one greater than 46 cm (18.1 in.) in length.
Drop Lake (48°48'N., 86°59'W.).	33	No brook trout size restrictions.
Dryberry Lake - Northwest Bay, Point Bay and Point Lake - (49°30'N., 93°50'W.)	22	See Lake of the Woods - Whitefish Bay Muskellunge minimum length of 137 cm (54 in.).
Duck Lake.	22	See Minnitaki Lake.
Eagle Lake (49°42'N., 93°13'W.).	22	NO ANGLING AT NIGHT FOR ANY SPECIES. Northern pike open from Jan. 1 - Apr. 14 & 3rd Sat. in May - Dec. 31. Walleye must be less than 46 cm (18.1 in.) or greater than 58 cm (22.8 in.) and not more than one (1) over 58 cm (22.8 in.) in length. Muskellunge minimum length of 137 cm (54 in.). Lake trout catch limit of one (1), possession limit of two (2) of which not more than one (1) greater than 65 cm (25.6 in.) in length.
Eagle Lake - portions of Eagle Lake and associated waters including Whiteclay Narrows, Brule Narrows, Niven Bay, Bunyon Lake, Godson Creek, Kekekwa Creek, Wawapus Creek, Bear Narrows, Froghead Bay, Rice Bay, Violet Lake, One Mile Rapids, Two Mile Rapids, Meridian Bay.	22	Fish sanctuary - no fishing from Apr. 1 - May 31.
Echo Bay - Kenora District .	22	See Lake of the Woods - Clearwater Bay.
Echo Lake (48°47'N., 86°55'W.).	33	No brook trout size restrictions.
Echoing Lake.	24	See Lake of the Woods - Whitefish Bay regarding lake trout catch and possession limits.
Elevation Lake (48°20'N., 90°52'W.).	21	Fish sanctuary - no fishing from Jan. 1 - Fri. before 4th Sat. in May & Oct. 1 - Dec. 31.
Elva Lake (49°52'N., 91°10'W.).	22	Walleye catch and possession limit of zero (0) (live release only).
English River (50°39'N., 93°22'W.) from the Manitou Falls Dam in Barnston Lake downstream and including Oak Lake.	31	Muskellunge minimum length of 102 cm (40 in.).
English River - between English Falls downstream to include all of Grassy Bay of Minnitaki Lake.	22	Fish sanctuary - no fishing from Apr. 1 - June 15.
English River - from an unnamed island at Talking Falls to latitude 49°33'45" N. drawn across Franks Lake.	22	Fish sanctuary - no fishing from Apr. 15 - June 14.
Eric Lake (48°53'N., 86°56'W.).	33	No brook trout size restrictions.
Esnagami Lake (50°19'N., 86°50'W.).	20	Lake trout - not more than one (1) greater than 56 cm (22 in.) in length.
Esnagami River - from the northern boundary of Esnagami Twp. (50°21'36"N., 86°46'45"W.) downstream (north) to the second set of rapids. (50°25'02"N., 86°40'04"W.)	20	Fish sanctuary - no fishing from Apr. 1 - June 14.
Esos Lake (49°07'N., 93°15'W.).	22	Muskellunge minimum length of 122 cm (48 in.).
Experimental Lakes Area – Pine Road Area – Dryden District – Lakes # 111, 189, 191, 221, 222, 223, 224, 239, 260, 305, 373, 375, 377, 378, 382, 442, 622, 623, 626, 658	22	Closed to angling all year. Contact Dryden MNR Office for more details.
Eye Lake.	32	Walleye catch and possession limit of two (2), not more than one greater than 46 cm (18.1 in.) in length.
Faircloth (Greytrout) (49°31'N., 88°00'W.) and Merpaw Lakes.	20	Lake trout aggregate catch limit of one (1).
Fall Lake (48°48'N., 88°38'W.) - Dorion Twp.	21	No brook trout size restrictions.
Fernow Lake (49°55'N., 86°05'W.).	33	Lake trout - not more than one (1) greater than 56 cm (22 in.) in length.
Flats Lake (48°56'N., 87°40'W.).	33	No brook trout size restrictions.
Footprint Lake (48°54' N., 93°36' W.).	22	Muskellunge minimum length of 122 cm (48 in.).
Gentian Creek at Kagiano Lake, between Lobelia Lake and Kagiano Lake, from Unnamed Lake to Kagiano Lake, approx. 1000 m (3,280 ft.) out from Gentian Creek Mouth.	33	Fish sanctuary - no fishing from Mar. 15 - June 15.
Gessie Lake - Goodfellow Twp.	21	Fish sanctuary - closed all year.
Goose Lake (50°32'N., 93°40'W.).	31	Muskellunge minimum length of 102 cm (40 in.).
Gordon Lake (48°51'N., 86°56'W.).	33	No brook trout size restrictions.
Granite River and Saganaga Lake, Saganaga Falls.	21	Fish sanctuary - no fishing from Apr. 1 - May 31.
Grassy Lake.	22	Walleye & sauger catch & possession limit of four (4), walleye not more than one (1) over 70 cm (27.5 in.), none under 35 cm (13.8 in.) or between 45 - 70 cm (17.7 - 27.5 in.) in length. Muskellunge minimum length of 122 cm (48 in.).
Graystone Lake - from Hwy. 599 to a line drawn across Graystone Lake at 91°03'13"W.	22	Walleye open from Jan. 1 - Apr. 14 and June 15 - Dec. 31.
Greenwater Creek - from the dam on Greenwater Creek to the first island in Upper . Shebandowan Lake	21	Fish sanctuary - no fishing from Apr. 1 - May 31.
Grehan (49°29'N., 86°37'W.), Little Pic, Sun and Yucca Lakes.	33	Lake trout aggregate catch limit of one (1) for these lakes.
Grimshaw Lake (48°58'N., 93°02'W.).	22	Fish sanctuary - closed all year.
Grouse Lake (48°32'N., 90°33'W.).	21	Fish sanctuary - no fishing from Jan. 1 - Fri. before 4th Sat. in May & Oct. 1 - Dec. 31.
Gunn Lake (49°58' N., 94°39' W.).	22	See Winnipeg River System.
Henderson Lake - Grand Trunk Pacific Block 2.	21	Fish sanctuary - closed all year.
Heron Lake.	22	Walleye closed all year.
Hidden Lake.	22	See Minnitaki Lake.
High Lake - Territorial District of Kenora - Kenora District	22	Live fish may not be used as bait or possessed for use as bait.
Hooch Lake and connecting waters - Echo, Lomond, Pickerel and Vermilion Twps.	22	Fish sanctuary - no fishing from Jan. 1 - Fri. before 3rd Sat. in June & Dec. 1 - Dec. 31. Catch and release only for muskellunge, northern pike and smallmouth bass. Artificial lures with a single barbless hook must be used.
Hood Lake (48°29'N., 90°39'W.).	21	Fish sanctuary - no fishing from Jan. 1 - Fri. before 4th Sat. in May & Oct. 1 - Dec. 31.
Huck Lake (49°50'N., 86°16'W.).	33	Fish sanctuary - no fishing from Jan. 1 - Fri. before 3rd Sat. in May.
Ice Lake - Goodfellow Twp.	21	Fish sanctuary - closed all year.

<b>Waters of Northwestern Ontario (Map E)</b>	<b>Div.</b>	<b>Exceptions</b>
Island Creek - (49°49'02"N., 94°19'10"W.) Haycock Twp. - Kenora District.	22	Fish sanctuary - no fishing from Apr. 1 - May 31.
Jackfish Creek - from the outflow of Jackfish Lake to the inflow of Perrault Lake.	22A	Fish sanctuary - no fishing from Apr. 1 - May 31. Other division seasons applicable.
Jackfish River - between Nipigon Bay (Lake Superior) and the First Barrier.	33	Walleye and sauger closed all year.
Jessie Lake.	21	Brook trout catch and possession limit of one (1); <b>which must be greater than 56 cm (22 in.) in length, Conservation licence limit of zero (0).</b>
Kagiano Lake (49°22'N., 86°21'W.) the portion known as Palmquist Bay between the mouth of Palmquist River and Kagiano Lake.	33	Fish sanctuary - no fishing from Mar. 15 - June 15.
Kagiano River at Kagiano Lake, south end of lake 200 m (656 ft.) out from river mouth.	33	Fish sanctuary - no fishing from Mar. 15 - June 15.
Kagiano River at Michal Lake from Marmota Creek upstream to top of rapids.	33	Fish sanctuary - no fishing from Mar. 15 - June 15.
Kagiano River - between the weir at the top of Twin Falls downstream to the top of First Falls Rapids.	33	Fish sanctuary - no fishing from Mar. 15 - June 15.
Kakagi (Crow) Lake (49°15'N., 93°55'W.) - Kenora District.	22	Large and smallmouth bass catch and release only from June 1 - June 30. Division wide limits apply for remainder of year. Muskellunge minimum length of 137 cm (54 in.).
Kallio Lake.	21	No brook trout size restrictions.
Kashabowie River - from the dam on Kashabowie Lake to the island in Upper Shebandowan Lake.	21	Fish sanctuary - no fishing from Apr. 1 - May 31.
Kawashkagama River - from Abamasagi Lake upstream to 100 m (328 ft.) above Albert Falls.	20	Fish sanctuary - no fishing from Apr. 1 - June 14.
Killala Lake (49°05'N., 86°32'W.).	33	Fish sanctuary - closed all year.
Lac des Mille Lacs.	21	Walleye must be 33 cm (13.0 in.) in length or greater and only one (1) may be greater than 46 cm (18.1 in.) in length. Northern pike open from Jan. 1 - Apr. 14 & 2nd Sat. in May - Dec. 31.
Lac Seul, including Broad, Sunlight, Root River*, Vaughan* and Lost Lakes, & Wenasaga River*	30	Walleye and sauger must be less than 46 cm (18 in.) or greater than 53 cm (20.9 in.) and not more than one (1) over 53 cm (20.9 in.) in length. No person shall possess any live fish taken by angling other than bait-fish. Fish sanctuary - no fishing from Jan. 1 - June 14 & Dec. 1 - Dec. 31. Fish sanctuary - no fishing from Jan. 1 - June 14 & Dec. 1 - Dec. 31. Fish sanctuary - no fishing from Apr. 1 - June 14.
* Vaughan Lake (50°13'N., 92°22'W.) * Root River (Adamhay) between latitudes 50°39'N. and 50°42'30"N. * Wenasaga River - from the first rapids upstream from Lac Seul approx. 3 km downstream to the last group of islands		
Laclu (Belle) Creek - (49°48'N., 94°36'W.) Pellatt Twps. - Kenora District.	22	Fish sanctuary - no fishing from Apr. 1 - May 31.
Ladysmith Creek and Unnamed Creek - Ladysmith Twp., between Rugby Lake and the confluence of Ladysmith Creek and the unnamed creek flowing out of Tent Lake.	22	Fish sanctuary - no fishing from Apr. 1 - May 31.
Lakes # 20, 26, 39, 42 - research lakes - Centre for Northern Forest Ecosystem Research	32	Lake trout closed all year. Contact Fort Frances MNR Office for more details.
Lake Helen.	21	Walleye and sauger closed all year. Brook trout catch and possession limit of one (1); <b>which must be greater than 56 cm (22 in.) in length, Conservation licence limit of zero (0).</b>
Lake I-100 (South Lake) (50°01'N., 88°03'W.).	20	Lake trout - not more than one (1) greater than 56 cm (22.0 in.) in length.
Lake Nipigon - all tributaries up to the first barrier to migration, all waters on the islands and Forgan, Bonner, Little Bonner and Jackpot Lakes.	34	No possession of live brook trout or lake trout. <b>Brook trout catch and possession limit of one (1), which must be greater than 56 cm (22 in.) in length, conservation licence limit of zero (0).</b> Single barbless hooks must be used all year. Artificial lures must be used when angling through the ice. No person shall possess stringers or live holding pens.
Lake Nipigon - Ombabika Bay (50°15'N., 88°15'W.) and Wabinosh Bay (50°02'N., 88°50'W.) and the tributaries of the bays up to the first barrier.	34	Walleye catch and possession limit of two (2), only one (1), greater than 46 cm (18.1 in.) in length.
Lake Nipigon (West Bay) the waters lying north and west of the north tip of Boles Island.	34	Fish sanctuary - closed all year.
Lake Nipigon tributaries up to the first barrier to migration (as identified on a Provincial Series Map) and all waters on the islands and Forgan, Bonner and Jackpot Lakes.	34	Tributaries up to the first barrier to migration are part of Division 34 - refer to Division/Species Table on pages 70 and 71 for seasons and limits.
Lake of the Woods.	22	No person who is engaged in sport fishing from a vessel shall possess more fish on board the vessel than the daily limit for that species. Large and smallmouth bass catch and release only from June 1 - June 30; division wide limits apply for remainder of year. Muskellunge minimum length of 137 cm (54 in.).
Lake of the Woods - Clearwater Bay, Echo Bay and Cul de Sac Lake.	22	Lake trout open from 3rd Sat. in May - Sept. 30. Lake trout catch and release only except for tag holders. Contact Kenora MNR office for details on lake trout tags. Barbless hooks must be used - 4 hooks allowed except for lake trout - 1 hook only. You may not use fish or fish parts for bait.
Lake of the Woods - Sabaskong Bay (49°09'N., 94°09'W.) - Godson Twp - Kenora District.	22	Fish sanctuary - no fishing from Apr. 1 - May 31.
Lake of the Woods - Whitefish Bay - consisting of Regina, Snake, Boot, Ghost, Brule, Devils, Atikaminke, Camp, Cloverleaf, Log, Reedy, Willow and Sammons Bays and Knickerbocker, Louis, Cross, Alfred Inlets.	22	Lake trout catch limit of one (1) from Whitefish Bay, Dryberry Lake, and Echoing Lake (Div. 24); two (2) in possession, not more than one (1) greater than 65 cm (25.6 in.) in length. Single barbless hooks must be used from Jan. 1 to Fri. before 3rd Sat. in May. You may not use fish or fish parts for bait from Jan. 1 - Fri. before 3rd Sat. in May.
Lake St. Joseph.	31	Non-residents require a special tag which is available at no charge from the Lake St. Joseph tourist operator from whom accommodation is obtained. Single barbless hook only may be used.
Lake St. Joseph - Twiname Bay east of a line beginning at the north shore at 51°09'10"N., 90°27'10"W., southeast to 51°08'54"N., 90°25'52"W., and south to 51°08'30"N., 90°25'35"W.	31	Fish sanctuary - no fishing from Mar. 1 - June 15
Lake Superior.	23	A person who is angling from a boat may use two (2) lines while trolling in Lake Superior except in the following waters: Black Bay north of latitude 48°37'N. (Bent Island); Lake Superior and Nipigon Bay lying north of a line drawn northeasterly from the southernmost tip of Magnet Point on Black Bay Peninsula to Schreiber Point; and Michipicoten Bay inside a line drawn across the bay from Perkwakwai Point to Smokey Point.
Lake Superior - east of the Pic River (Div. 23).	23	Rainbow trout catch and possession limit of two (2), conservation licence limit of one (1).
Lake Superior tributaries in Divs. 21 and 33, except the McIntyre and Neebing Rivers.	21 & 33	See All tributaries to Lake Superior in General Areas
Lake Superior - west of the Pic River (Div. 23).	23	Rainbow trout catch and possession limit of one (1), conservation licence limit of one (1).
Lake Superior - Black Bay from 48°37'N. (Bent Island) northward.	23	Walleye closed all year.

<b>Waters of Northwestern Ontario (Map E)</b>	<b>Div.</b>	<b>Exceptions</b>
Lake Superior - Nipigon Bay.	23	Walleye and sauger closed all year.
Lamont Lake (48°48'N., 87°16'W.).	33	No brook trout size restrictions.
Larson Lake (49°38'N., 92°37'W.).	22	Muskellunge minimum length of 137 cm (54 in.).
Lee Lake - Mulcahy and Killala Twps.	31	Fish sanctuary - no fishing from Mar. 1 - Dec. 31.
Lilac Lake (48°18'N., 92°23'W.) - between Little Vermilion Lake and Lac la Croix.	32	Fish sanctuary - no fishing from Jan. 1 - May 31 & Oct. 1 - Dec. 31.
Little Grassy Lake.	22	Walleye and sauger catch and possession limit of four (4), walleye not more than one (1) over 70 cm (27.5 in.), none under 35 cm (13.8 in.) or between 45 - 70 cm (17.7 - 27.5 in.) in length. Muskellunge minimum length of 122 cm (48 in.).
Little Gravel River, including headwater lakes north and northwest of Buckaday Lake. (49°00'N., 87°45'W.)	33	Brook trout open from last Sat. in Apr. - Labour Day.
Little Grey Trout Lake (49°03'N., 92°12'W.).	32	Fish sanctuary - no fishing from Feb. 1 - June 30 & Aug. 1 - Dec. 31. Non-residents fishing in the border waters area, refer to page 78.
Little Gunflint Lake.	21	Fish sanctuary - no fishing from Apr. 1 - May 31.
Little Harvie Lake (49°10'N., 87°12'W.).	33	No brook trout size restrictions.
Little North Lake.	21	Fish sanctuary - no fishing from Apr. 1 - May 31.
Little Pic, (49°22'N., 86°38'W.) - Grehan, Sun and Yucca Lakes.	33	Lake trout aggregate catch limit of one (1).
Little Sand Lake (50°03'N., 94°42'W.).	22	See Winnipeg River System.
Little Savanne River.	21	Walleye must be 33 cm (13.0 in.) in length or greater and only one (1) may be greater than 46 cm (18.1 in.).
Little Savanne River - from the C.P.R. right-of-way to the first C.N.R. right-of-way.	21	Fish sanctuary - no fishing from Apr. 1 - May 31.
Little Vermilion Lake and all connecting waters to Cedarbough Lake in Jordan, Drayton, Vermilion and Pickerel Twps.	22	Lake trout closed all year.
Longlegged Lake (50°45'N., 94°05'W.).	31	Muskellunge minimum length of 137 cm (54 in.).
Lost Lake (50°01'N., 94°39'W.).	22	See Winnipeg River System.
Lower Manitou Lake (49°15'N., 93°00'W.).	22	Muskellunge minimum length of 122 cm (48 in.).
Lower Seine River (48°40'N., 92°49'W.).	22	See Seine River System.
Luella Lake (51°11'N., 88°44'W.).	20	Lake trout - not more than one (1) greater than 56 cm (22 in.) in length.
MacFarlane River to Ena Lake Dam.	22	See Winnipeg River System.
Makomesut Lake.	22	Walleye closed all year.
Maligne River and Curran Bay (Saganaga Lake).	21	Fish sanctuary - no fishing from Apr. 1 - May 31.
Manomin Lake (48°52'N., 93°43'W.).	22	Muskellunge minimum length of 122 cm (48 in.).
Marmion Lake - south of the Marmion divider weir at 48°54'35"N., 91°32'27"W.	32	Walleye closed all year.
Marshall Lake (50°25'N., 87°30'W.).	20	Yellow perch catch and possession limit of twenty-five (25).
Maskinonge Lake and connecting waters - Echo, Lomond, Pickerel and Vermilion Twps.	22	Fish sanctuary - no fishing from Jan. 1 - Fri. before 3rd Sat. in June & Dec. 1 - Dec. 31. Catch and release only for muskellunge, northern pike and smallmouth bass. Artificial lures with a single barbless hook must be used.
McIntyre River.	21	Rainbow trout catch and possession limit of one (1), minimum length of 69 cm (27.1 in.).
McIntyre River - from the footbridge to the dam on the University property in the City of Thunder Bay.	21	Fish sanctuary - closed all year.
McKay Lake (49°37'N., 86°25'W.).	33	Lake trout - not more than one (1) greater than 56 cm (22 in.) in length.
Meggisi Lake (49°17'N., 92°36'W.).	22	Muskellunge minimum length of 122 cm (48 in.).
Megikons River and Sowden Lake that part downstream from confluence of Megikons River and Reba River to longitude 91°10'W. drawn through Sowden Lake.	22	Fish sanctuary - no fishing from Apr. 15 - June 14.
Merpaw Lake (51°39'N., 88°58'W.) and Faircloth (Greytrout) Lake.	20	Lake trout aggregate catch limit of one (1).
Meta Lake (50°31'N., 87°24'W.).	20	Yellow perch catch and possession limit of twenty-five (25).
Middle Lake (49°46'N., 94°37'W.).	22	See Winnipeg River System.
Mile Lake (49°40'N., 92°46'W.).	22	Muskellunge minimum length of 137 cm (54 in.).
Minnehaha Lake.	22	Muskellunge minimum length of 132 cm (52 in.).
Minnitaki Lake, including Abram, Duck, Hidden, Pelican, Batsford Lakes and the English River*, Red Pine Bay*, and Rice River*.	22 & 31	Walleye and sauger must be less than 46 cm (18 in.) or greater than 53 cm (20.9 in.) and not more than one (1) greater than 53 cm (20.9 in.) in length. No person shall possess any live fish taken by angling other than bait-fish. Northern pike open from Jan. 1 - Apr. 14 and 3rd Sat. in May - Dec. 31. Fish sanctuary - no fishing from Apr. 1 - June 15.
- *English River between English River Falls downstream to a line drawn from the western shore of Minnitaki Lake starting at 49°55'49"N., 91°48'29"W. to the most southerly point of Nicks Island then continuing to the eastern shore of Minnitaki Lake at 49°56'14"N., 91°47'46"W.		
- *Red Pine Bay.		
- *Rice River - Twill Lake, Flower Lake, Twinflower Lake, Parnes Lake and connecting streams, Twin-flower Creek, and Twin Bay to Minnitaki Lake (Collectively known as the Rice River) and waters extending approximately 300 m (980 ft.) North, to the parallel of latitude 49°58'34" N. drawn across Minnitaki Lake.		Catch and release only for all species - 3rd Sat. in May - June 15. Fish sanctuary - no fishing from Apr. 1 - June 15.
Moose Creek - between Big Moose Lake and Cobble Lake including part of Cobble Lake.	22	Fish sanctuary - no fishing from Apr. 1 - May 31.
Moose Lake.	32	Walleye closed all year.
Mud Lake - (50°25'25"N., 93°14'07"W.) all waters in the unsurveyed portion of the territorial District of Kenora starting from where its mouth enters Wabaskang Lake - Kenora District.	22A	Fish sanctuary - no fishing from Apr. 1 - May 31.
Muriel Lake (49°49'N., 94°41'W.).	22	See Winnipeg River System.
Muskrat River (sections).	21	Lake trout and splake closed all year.
Myrt Lake (48°27'N., 90°44'W.).	21	Fish sanctuary - no fishing from Jan. 1 - Fri. before 4th Sat. in May & Oct. 1 - Dec. 31.
Neebing River	21	Rainbow trout catch and possession limit of one (1), minimum length of 69 cm (27.1 in.).
Nelson Lake - from a line between the western shoreline at approximately 50°13'09"N., 93°09'44"W and the eastern shoreline at 50°14'26"N., 93°09'14"W upstream including the north part of Nelson Lake and the creek and Richmond Lake all in the unsurveyed portion of the Territorial District of Kenora - Kenora District.	22A	Fish sanctuary - no fishing from Apr. 1 - May 31.



Waters of Northwestern Ontario (Map E)	Div.	Exceptions
Nipigon Bay of Lake Superior.	23	See Lake Superior - Nipigon Bay.
Nipigon River - entire length, including Jessie Lake and Lake Helen.	21	Brook trout catch and possession limit of one (1), which must be greater than 56 cm (22 in.) in length. Conservation licence limit of zero (0).
Nipigon River - (Backpool) below the Alexander Dam east of a line drawn south from the Alexander Dam Log Chute to the northern most tip of the point of land on the east shore of the Nipigon River.	21	Fish sanctuary - no fishing from Jan. 1 - Fri. before 4th Sat. in May & Tues. after Labour Day - Dec. 31..
Nipigon River (Gapen's Pool) (49°01'N., 88°15'W.) that part of the Nipigon River lying east of a line drawn north from the eastern shore abutment of Hwy. 11/17 bridges to the western tip of a point of land on the eastern shore of the outflow from Lake Helen.	21	Fish sanctuary - no fishing from Jan. 1 - Fri. before 4th Sat. in May & Tues. after Labour Day - Dec. 31.
Nipigon River (Parmacheene) (49°05'N., 88°19'W.) from the downstream edge of the Parmacheene C.N.R. bridge abutments, upstream approx. 400 m (1,312 ft.) to the first narrows.	21	Fish sanctuary - no fishing from Jan. 1 - Fri. before 4th Sat. in May & Tues. after Labour Day - Dec. 31.
Nipigon River - between Alexander Falls Dam and Nipigon Bay.	21	Walleye and sauger closed all year.
North Mawn Lake (49°36'N., 90°25'W.).	21	Fish sanctuary - no fishing from Jan. 1 - Fri. before 4th Sat. in May & Oct. 1 - Dec. 31.
North Twin Lake.	32	Walleye closed all year.
Northeast Campcot Lake (49°02'N., 86°37'W.).	33	Fish sanctuary - closed all year.
Nugget Creek (Zealand Twp.) - between Hughes Creek and C.P.R. crossing at Wabigoon Lake.	22	Fish sanctuary - no fishing from Apr. 1 - May 31.
Obabikon Lake.	22	See Lake of the Woods.
Olsen Lake (49°40'N., 92°37'W.).	22	Muskellunge minimum length of 137 cm (54 in.).
Onaman Lake (50°00'N., 87°26'W.).	33	Fish sanctuary - no fishing from Mar. 1 - May 31.
Opapimiskan Lake	24	Catch and release - for all species, no fish may be kept.
Opichuan Lake (51°15'N., 87°46'W.).	20	Lake trout - not more than one (1) greater than 56 cm (22 in.) in length.
Ord River - from 50°15'22"N., 93°01'40"W. upstream to the top of first set of rapids at 50°12'55"N., 93°01'08"W. - Kenora District.	22A	Fish sanctuary - no fishing from Apr. 1 - May 31. Other divisions seasons applicable.
O'Sullivan Lake (50°25'N., 87°02'W.).	20	Lake trout - not more than one (1) greater than 56 cm (22 in.) in length.
Pakwash Lake - Fisherman's Bay	31	Fish sanctuary - no fishing from Apr. 15 - May 31.
Para Lake - Fairlie Twp.	31	Fish sanctuary - closed all year.
Parker Creek (Fairlie Twp.) - from Parker Lake to Red Lake, including an unnamed bay.	31	Fish sanctuary - no fishing from Apr. 15 - May 31.
Partridge Crop Lake.	22	Walleye and sauger catch and possession limit of four (4), walleye not more than one (1) over 70 cm (27.5 in.), none under 35 cm (13.8 in.) or between 45 - 70 cm (17.7 - 27.5 in.) in length. Muskellunge minimum length of 122 cm (48 in.).
Partridge Lake (48°32'N., 90°34'W.).	21	Fish sanctuary - no fishing from Jan. 1 - Fri. before 4th Sat. in May & Oct. 1 - Dec. 31.
Passover Creek - between the southern end of Meridian Bay of Eagle Lake (49°42'N., 93°13'W.) and Chancellor Lake.	22	Fish sanctuary - no fishing from Apr. 1 - May 31.
Paulson Lake (49°37'N., 92°37'W.).	22	Muskellunge minimum length of 137 cm (54 in.).
Pelican Lake.	22 & 31	See Minnitaki Lake.
Perrault Falls and Wabaskang Lake Town of Perrault Falls, between Hwy. 105 bridge and a point 500 m (1,640 ft.) northeast of the bridge.	22A	Fish sanctuary - no fishing from Apr. 1 - May 31.
Perrault Lake (50°17'N., 93°08'W.).	22A	Muskellunge minimum length of 137 cm (54 in.).
Pine River - near Gunflint Lake.	21	Fish sanctuary - no fishing from Apr. 1 - May 31.
Pine Road Area - Experimental Lakes Area - a number of lakes in the southwestern corner of Dryden District known locally as the Pine Road Area.	22	See Experimental Lakes Area.
Pipestone Lake - Pipestone Chain (49°05'N., 93°35'W.).	22	Muskellunge minimum length of 122 cm (48 in.).
Pistol Lake (50°00'N., 94°43'W.).	22	See Winnipeg River System.
Pocket Lake - Glen Twp.	21	No brook trout size restrictions.
Polly Lake.	33	Walleye and sauger closed all year. Brook trout open from last Sat. in Apr. - Labour Day. Brook trout catch and possession limit of one (1) which must be greater than 56 cm (22 in.) in length, conservation licence limit of zero (0).
Post Creek - from the base of the waterfall in Post Bay to latitude 49°55'36" N. on Sturgeon Lake.	22	Walleye open from Jan. 1 - Apr. 14 & June 15 - Dec. 31.
Puzzle Bay of Ord Lake south of the narrows at latitude 50°08'18"N.	22A	Fish sanctuary - no fishing from Apr. 1 - May 31.
Quill Lake - Pipestone Chain (49°01'N., 93°43'W.).	22	Muskellunge minimum length of 122 cm (48 in.).
Rainy Lake	22	Muskellunge minimum length of 122 cm (48 in.). Walleye and sauger catch and possession limit of four (4), walleye not more than one (1) over 70 cm (27.5 in.), none under 35 cm (13.8 in.) or between 45 - 70 cm (17.7 - 27.5 in.) in length. Fish sanctuary - no fishing from Apr. 1 - June 14. Fish sanctuary - no fishing from Apr. 1 - June 14. Fish sanctuary - no fishing from Apr. 1 - June 14. Fish sanctuary - no fishing from Apr. 1 - June 14. Fish sanctuary - no fishing from Apr. 1 - June 14. Fish sanctuary - no fishing from Apr. 1 - June 14. Fish sanctuary - no fishing from Apr. 1 - June 14.
- Big Canoe River, - Crooked Narrows to Sand Island Falls of Redgut Bay, - Falls River and Pipestone River from Stokes Bay of Rainy Lake upstream to first rapids, - Halfway Inlet and Lost Bay, - Little Canoe River, - Porter Inlet of Redgut Bay, - Rat River Bay from the narrows and small island at the entrance to Rat River Bay, upstream to, and including the first rapids of both the West Branch Rat River and the East Branch Rat River, - Squirrel Falls between Namakan Lake and Rainy Lake, downstream for 250 m (820 ft.) on the north shore and 200 m (656 ft.) on the south shore from the Canadian Kettle Falls dam, - Stanjikoming Bay.		Fish sanctuary - closed all year. Fish sanctuary - no fishing from Apr. 1 - June 14.
Rainy River - from dam in Fort Frances downstream to Wheeler's Point at Lake of the Woods.	22	Muskellunge minimum length of 122 cm (48 in.). Walleye catch and possession limit of two (2) from Mar. 1 - Apr. 14. No walleye may be more than 46 cm (18.1 in.) in length during the period between Mar. 1 & Apr. 14, and at other times not more than one (1) walleye may be over 46 cm (18.1 in.).
Rainy River - from Rainy Lake downstream to the Fort Frances dam.	22	Walleye and sauger catch and possession limit of four (4), walleye not more than one (1) over 70 cm (27.5 in.), none under 35 cm (13.8 in.) or between 45 - 70 cm (17.7 - 27.5 in.) in length. Muskellunge minimum length of 122 cm (48 in.).

Waters of Northwestern Ontario (Map E)	Div.	Exceptions
Red Lake: - Chukuni River (McDonough and Bateman Twps.) from Little Vermilion Lake south to Red Lake, including part of Hoyles Bay, - Golden Creek (Bateman Twp.) from the Pine Ridge Road, south to Red Lake, including part of East Bay, - Ranger Lake, Ranger Creek and part of North Bay of Gullrock Lake.	31	Fish sanctuary - no fishing from Apr. 15 - May 31. Fish sanctuary - no fishing from Apr. 15 - May 31. Fish sanctuary - no fishing from Apr. 15 - May 31.
Red Lake (51°03'N., 93°49'W.) - all the waters upstream of the Chukuni River at Hwy. 125	31	Lake trout catch and possession limit of zero (0) - catch and release only. <b>Artificial lures only with a single barbless hook must be used.</b>
Rice River (Twin Flower Creek System), Hidden, Duck, Minnitaki, Abram, Pelican, and Botsford Lakes and connecting waters.	22 & 31	See Minnitaki Lake.
Richmond Lake - Kenora District.	22A	Fish sanctuary - no fishing from Apr. 1 - May 31.
Rock Lake (49°32'N., 92°35'W.).	22	Muskellunge minimum length of 137 cm (54 in.).
Root River - between latitude 50°42'30"N., and 50°52'30"N.	31	Fish sanctuary - no fishing from Jan. 1 - June 14 & Sept. 1 - Dec. 31.
Root River - between latitude 50°39'N., and 50°42'30"N.	30	See Lac Seul.
Roughrock Lake (50°06'N., 94°46'W.).	22	See Winnipeg River System.
Rowan Lake (49°19'N., 93°33'W.).	22	Muskellunge minimum length of 137 cm (54 in.). Non-residents fishing in the Border Waters area, refer to page 78.
Rugby Lake - Ladysmith and Rowell Twps.	22	Fish sanctuary - no fishing from Apr. 1 - May 31.
Rutter Lake (49°04'N., 92°12'W.).	32	Fish sanctuary - no fishing from Feb. 1 - June 30 & Aug. 1 - Dec. 31.
Ryckman Lake.	22	Walleye closed all year.
Salvenson Lake (50°22'N., 94°20'W.).	22	Walleye open from Jan. 1 - Mar. 31 & 3rd Sat. in May - Dec. 31.
Savanne Lake - Grand Trunk Pacific Block 2.	21	Fish sanctuary - closed all year.
Savanne River.	21	Walleye must be 33 cm (13.0 in.) in length or greater and only one (1) may be greater than 46 cm (18.1 in.) in length.
Savanne River - from One Mile Creek to Dexter Creek.	21	Fish sanctuary - no fishing from Apr. 1 - May 31.
Savant Lake (North Arm) - Savant Twp.	31	Fish sanctuary - no fishing from Apr. 15 - June 20.
Savas Lake (50°03'N., 87°59'W.).	33	Brook trout open from last Sat. in Apr. - Labour Day.
Sawmill Creek and Sawmill Bay of Upper Shebandowan Lake.	21	Fish sanctuary - no fishing from Apr. 1 - May 31.
Scattergood Lake (49°18'N., 92°43'W.).	22	Fish sanctuary - no fishing from Jan. 1 - July 31 & Sept. 1 - Dec. 31.
Schistose Lake (49°10'N., 93°37'W.).	22	Muskellunge minimum length of 122 cm (48 in.).
Scott Lake #1 (48°11'N., 90°19'W.).	21	No brook trout size restrictions.
Seahorse Lake.	22	Lake trout closed all year.
Secret Lake (49°05'N., 92°09'W.).	32	Fish sanctuary - no fishing from Feb. 1 - June 30 & Aug. 1 - Dec. 31. Non-residents fishing in the border waters area, refer to page 78.
Seine River System - from Kettle Point of Rainy Lake upstream to Crilly Dam, situated immediately north of Hwy. 11.	22	Muskellunge minimum length of 122 cm (48 in.). Walleye and sauger catch and possession limit of four (4), walleye not more than one (1) over 70 cm (27.5 in.), none under 35 cm (13.8 in.) or between 45 - 70 cm (17.7 - 27.5 in.) in length.
Shale Lake (49°54'N., 88°43'W.).	21	No brook trout size restrictions.
Shamokan Creek and Upper Twin Lake - beginning at the narrowing of Shamokan Creek and continuing downstream into Pete's Bay of Upper Twin Lake.	33	Fish sanctuary - no fishing from Apr. 1 - June 14.
Shebandowan Lake (48°20'N., 90°20'W.).	21	Lake trout closed all year. See Kashabowie River, Swamp River, Greenwater Creek and Sawmill Creek.
Shoal Lake on the Seine River.	22	Walleye and sauger catch and possession limit of four (4), walleye not more than one (1) over 70 cm (27.5 in.), none under 35 cm (13.8 in.) or between 45 - 70 cm (17.7 - 27.5 in.) in length. Muskellunge minimum length of 122 cm (48 in.).
Shoal Lake above Ash Rapids - Kenora District.	22	Walleye and sauger closed all year. Muskellunge minimum length of 137 cm (54 in.). Large and smallmouth bass catch and release only from June 1 to June 30, division-wide limits apply for remainder of year. Live fish may not be possessed or used as bait
Slender Lake (49°03'N., 93°43'W.).	22	Muskellunge minimum length of 122 cm (48 in.).
South Lake (Lake I-100) (51°01'N., 88°03'W.).	20	Lake trout - not more than one (1) greater than 56 cm (22 in.) in length.
South Twin Lake.	32	Walleye closed all year.
Southeast Campcot Lake (49°05'N., 86°37'W.).	33	Fish sanctuary - closed all year.
Spruce River (sections).	21	Lake trout and splake closed all year.
Squaw Lake (49°36'N., 94°51'W.).	22	See Lake of the Woods.
Squeers Lake (48°31'N., 90°33'W.).	21	Fish sanctuary - closed all year.
Sturgeon Lake described as Trappers Point Bay from 50°11'55"N. to the intersection of Trout Creek and Second Creek with Hwy. 599.	22	Walleye open from Jan. 1 to Apr. 14 & June 15 to Dec. 31.
Sun (49°25'N., 86°35'W.), Grehan, Little Pic and Yucca Lakes.	33	Lake trout aggregate catch limit of one (1) for these lakes.
Sunset Lake (48°12'N., 89°56'W.) - Lismore Twp.	21	No brook trout size restrictions.
Superb Lake (50°30'N., 86°59'W.).	20	Lake trout - not more than one (1) greater than 56 cm (22 in.) in length.
Swamp River and Swamp Bay of Lower Shebandowan Lake - Conacher and Hagey Twps.	21	Fish sanctuary - no fishing from Apr. 1 - May 31.
Three Finger Lake.	33	Fish sanctuary - no fishing from Jan. 1 - June 30 & Sept. 1 - Dec. 31. Walleye catch and possession limit is zero (0) - catch and release only. Barbless hooks must be used. Live fish may not be used as bait or possessed for use as bait.
Trup Lake (49°39'N., 92°47'W.).	22	Muskellunge minimum length of 137 cm (54 in.).
Trout Lake (48°17'N., 92°21'W.) - between Little Vermilion Lake and Lac la Croix.	32	Fish sanctuary - no fishing from Jan. 1 - May 31 & Oct. 1 - Dec. 31
Trout River (49°01'N., 92°53'W.) from the falls of Sakwite Lake to Otukamamooan Lake.	22	Fish sanctuary - no fishing from Apr. 1 - June 14.
Troutfly Lake (51°42'N., 88°53'W.).	20	Lake trout - not more than one (1) greater than 56 cm (22 in.) in length.



Waters of Northwestern Ontario (Map E)	Div.	Exceptions
Troutlake River - from the top of Whitefish Falls to a point 2 km (1.2 mi.) downstream where the river intersects Latitude 50°52'N.	31	Fish sanctuary - no fishing from Apr. 15 - May 31.
Turtle Lake (48°57'N., 91°57'W.).	32	Walleye catch and possession limit of two (2), not more than one (1) greater than 46 cm (18.1 in.) in length.
Unexpected Lake (50°30'N., 93°52'W.).	31	Muskellunge minimum length of 102 cm (40 in.).
Unnamed Creek - at the south end of Kagiano Lake in a bay east of the southernmost narrows, from the first obstruction to fish to 200 m (656 ft.) into Kagiano Lake.	33	Fish sanctuary - no fishing from Mar. 15 - June 15.
Unnamed Creek [500 m (1,640 ft.)] south of Kagiano River Inlet at Kagiano Lake, south end of lake from first obstruction to 200 m (656 ft.) out from creek mouth.	33	Fish sanctuary - no fishing from Mar. 15 - June 15.
Unnamed Lake (Clear) (50°33'N., 93°33'W.).	31	Muskellunge minimum length of 102 cm (40 in.).
Upper Roslyn Lake (49°15'N., 87°29'W.).	33	Fish sanctuary - closed all year.
Upper Twin Lake (Pete's Bay) (50°58'N., 86°37'W.).	33	See Shamokan Creek and Upper Twin Lake.
Vermilion River and tributaries between Elbow Lake and Expanse Lake.	31	Fish sanctuary - no fishing from Apr. 14 - June 5.
Wababimiga Lake (50°20'N., 92°44'W.).	20	Walleye closed until May 20, 2005.
Wabigoon Lake (49°44'N., 86°23'W.).	22	Muskellunge minimum length of 137 cm (54 in.).
Wabigoon Lake - 100 m (328 ft.) from Christie Island - Zealand Twp.	22	Fish sanctuary - no fishing from Apr. 1 - May 31.
Wabigoon River - Snake Bay Road to the Wabigoon Lake Indian Reserve - Satterly Twp.	22	Fish sanctuary - no fishing from Apr. 1 - May 31.
Watcomb Lake (49°51'N., 91°19'W.).	22	Walleye catch and possession limit two (2), not more than one (1) greater than 46 cm (18.1 in.) in length.
Watershed Lake (48°32'N., 90°32'W.).	21	Fish sanctuary - no fishing from Jan. 1 - Fri. before 4th Sat. in May & Oct. 1 - Dec. 31.
Weewullee Lake (50°06'N., 87°56'W.).	33	Brook trout open from last Sat. in Apr. - Labour Day.
Wegg Lake (50°34'N., 93°35'W.).	31	Muskellunge minimum length of 102 cm (40 in.).
Weikwabinonaw River - between Marks Lake and Weikwabinonaw Lake.	21	Fish sanctuary - no fishing from Apr. 1 - May 31.
Weikwabinonaw River - from Mark's Lake upstream to the Weikwabinonaw Lake Road.	21	Fish sanctuary - no fishing from Apr. 1 - May 31.
Weikwabinonaw River - from Trafalgar Bay on Northern Light Lake extending upstream to its confluence with Nelson Creek, including the unnamed lake known locally as Lily Lake.	21	Fish sanctuary - no fishing from Apr. 1 - May 31.
Weld Lake - Pipestone Chain (49°02'N., 93°41'W.).	22	Muskellunge minimum length of 122 cm (48 in.).
White Otter Lake (49°07'N., 91°52'W.).	32	Fish sanctuary - no fishing from Apr. 1 - June 14.
Whitefish Lake (48°13'N., 90°00'W.).	21	Yellow perch catch limit of fifty (50) in one (1) day, possession limit of one-hundred (100). Conservation licence limit of twenty-five (25).
Whiterock Lake (49°51'N., 91°15'W.).	22	Walleye catch limit zero (0) (catch & release only).
Wilcox Lake (50°31'N., 93°47'W.).	31	Muskellunge minimum length of 102 cm (40 in.).
Wild Potato Lake.	22	Walleye and sauger catch and possession limit of four (4), walleye not more than one (1) over 70 cm (27.5 in.), none under 35 cm (13.8 in.) or between 45 - 70 cm (17.7 - 27.5 in.) in length. Muskellunge minimum length of 122 cm (48 in.).
Winnipeg River System in its entirety - from Norman Dam at Kenora to the Whitedog Dam	22	Muskellunge minimum length of 137 cm (54 in.).
Winnipeg River System - from the outflow of Lake of the Woods to the Manitoba Border.	22	Walleye open from Jan. 1 - Mar. 14 & 3rd Sat. in May - Dec. 31. <b>Walleye must be between 35-45 cm (13.8-17.7 in.) and not more than one (1) may be greater than 70 cm (27.6 in.) in length.</b> <b>Resident walleye and sauger catch and possession limit of four (4), Conservation licence limit of two (2)</b> <b>Note: Non-resident walleye and sauger catch and possession limit of two (2), Conservation licence limit of one (1).</b>
Winnipeg River (west branch) - from Norman Dam to westerly tip of Tunnel Island and northerly point of Patent Property A-16.	22	Fish sanctuary - no fishing from Apr. 1 - May 31.
Wylie Lake.	33	Fish sanctuary - closed all year.
Young Lake (49°51'N., 91°13'W.).	22	Walleye catch limit zero (0) - catch & release only.
Yucca, (49°24'N., 86°38'W.) Grehan, Little Pic and Sun Lakes.	33	Lake trout aggregate catch limit of one (1) for these lakes.
Zeemel Lake - including the Paseminon River upstream to 300 m (984 ft.) above the Musselwhite Mine Road.	24	Fish sanctuary - closed all year.

## BEAR WISE

*Prepare  
and be aware  
when you are fishing.*



While fishing Ontario's lakes, rivers and streams, it's wise to remember that you are in the natural habitat of black bears. To avoid conflicts with bears, anglers should remember to:

- Stay alert while fishing in areas with dense cover or with high levels of natural noise – bears may not see or hear you.
- Clean fish well away from your fishing site.
- Keep the campsite clean on multi-day trips, storing food so that bears cannot reach it, either in the trunk of your car or hanging at least 4 metres (13 feet) above the ground.

In an immediate emergency: contact the local police or dial 911  
To report bear problems: contact the Bear Reporting Line at

**1 866 514-BEAR** (2327) (TTY) 705 945-7641

For information about the Bear Management Program, contact your local MNR office or visit our website: [bears.mnr.gov.on.ca](http://bears.mnr.gov.on.ca)

## Crown Land and Camping

In Ontario, travel on Crown lands and waters is generally free and unrestricted for recreational purposes. Generally, camping is allowed for up to 21 days at one site (to qualify as a separate site which can be occupied for an additional 21 days, a second camp site must be at least 100 metres from the location of the first site) or unless otherwise posted under the Public Lands Act. **However, some Crown lands may have restricted-travel zones for forest fire prevention, officially closed forest access roads, or specific areas posted with signs to prohibit all or certain kinds of uses or travel.**

**Non-residents of Canada 18 years of age or older require a permit to camp on Crown lands north of the French and Mattawa Rivers,** unless they are using a camping unit rented from a commercial outfitter in Ontario or own real property in Ontario. Contact an MNR office or licence issuer for permits.

A camping unit is defined as the equipment used for the purpose of outdoor accommodation and includes a tent, trailer, tent-trailer, recreational vehicle, camper-back and any watercraft equipped for overnight accommodation.

**NOTE: Non-residents camping on Crown lands must observe conservation licence limits in the following fishing divisions: 20, 21, 22, 22A, 24, 30, 31, 33 or 34, except for the Border Waters Area – see pages 72 & 73.**

## General Enquiries about MNR Programs and Services

For general inquiries about MNR programs and services contact:

- the Natural Resources Information Centre @ 1-800-667-1940 [English and French]

OR

- MNR by e-mail at: [mnr.nric@mnr.gov.on.ca](mailto:mnr.nric@mnr.gov.on.ca)

If you are not sure whether you can fish at a certain time and place, or if you have any questions about the regulations, contact the MNR office nearest to where you plan to fish. The following list of MNR offices includes the fisheries divisions for which each office is responsible.

**NOTE:** more than one MNR office may share responsibility for a division.

## Ministry of Natural Resources Offices

### SOUTHERN REGION

#### Algonquin Park (Div. 13)

Box 219, Whitney K0J 2M0  
(613) 637-2780

#### Clinton (Div. 3, 4, 35)

100 Don Street, Box 819 N0M 1L0  
(519) 482-3428

#### Owen Sound (Div. 4, 16, 35)

1450 Seventh Avenue E. N4K 2Z1  
(519) 376-3860

#### Aurora, Greater Toronto Area (GTA) (Div. 2, 4, 5, 6)

50 Bloomington Road W., L4G 3G8  
(905) 713-7400

#### Guelph (Div. 3, 4)

1 Stone Road W. N1G 4Y2  
(519) 826-4955

#### Parry Sound (Div. 15, 16)

7 Bay Street P2A 1S4  
(705) 746-4201

#### Aylmer (Div. 1, 2, 3, 4)

353 Talbot Street W. N5H 2S8  
(519) 773-9241

#### Kemptville (Div. 9, 10, 11, 12, 12A)

Postal Bag 2002, Concession Road  
K0G 1J0  
(613) 258-8204

#### Pembroke (Div. 12, 13, 15)

31 Riverside Drive, K8A 8R6  
(613) 732-3661

#### Bancroft (Div. 7, 15, 29)

106 Monck Street, Box 500 K0L 1C0  
(613) 332-3940

#### Kingston (Div. 7, 8, 9, 11, 29)

Ontario Government Building,  
Beechgrove Complex,  
51 Heakes Lane K7M 9B1  
(613) 531-5700

#### Peterborough (Div. 6, 7, 8)

300 Water Street,  
P.O. Box 7000 K9J 8M5  
(705) 755-2001

#### Bracebridge (Div. 15)

R.R. 2, Hwy 11. 1350 High Falls Road  
P1L 1W9  
(705) 645-8747

#### Midhurst (Huron) (Div. 4, 5, 16)

2284 Nursery Road L0L 1X0  
(705) 725-7500

#### Tweed

126 Old Troy Road K0K 3J0  
(613) 478-2330

#### Chatham (Div. 1, 2, 3)

870 Richmond Street W. P.O. Box 1168  
N7M 5J5  
(519) 354-7340

#### Minden (Div. 6, 15)

Hwy. 35 By-pass, Box 820 K0M 2K0  
(705) 286-1521

#### Vineland (Div. 2, 3, 4, 8)

4890 Victoria Avenue N. P.O. Box 5000  
Vineland Station L0R 2E0  
(905) 562-4147

# Ministry of Natural Resources Offices

## NORTHWEST REGION

### Atikokan (Div. 32)

108 Saturn Avenue POT 1C0  
(807) 597-6971

### Dryden (Div. 22)

479 Government Street (Hwy.17),  
Box 730 P8N 2Z4  
(807) 223-3341

### Fort Frances (Div. 22)

922 Scott Street  
P9A 1J4  
(807) 274-5337

### Geraldton

#### (Div. 19, 20, 33)

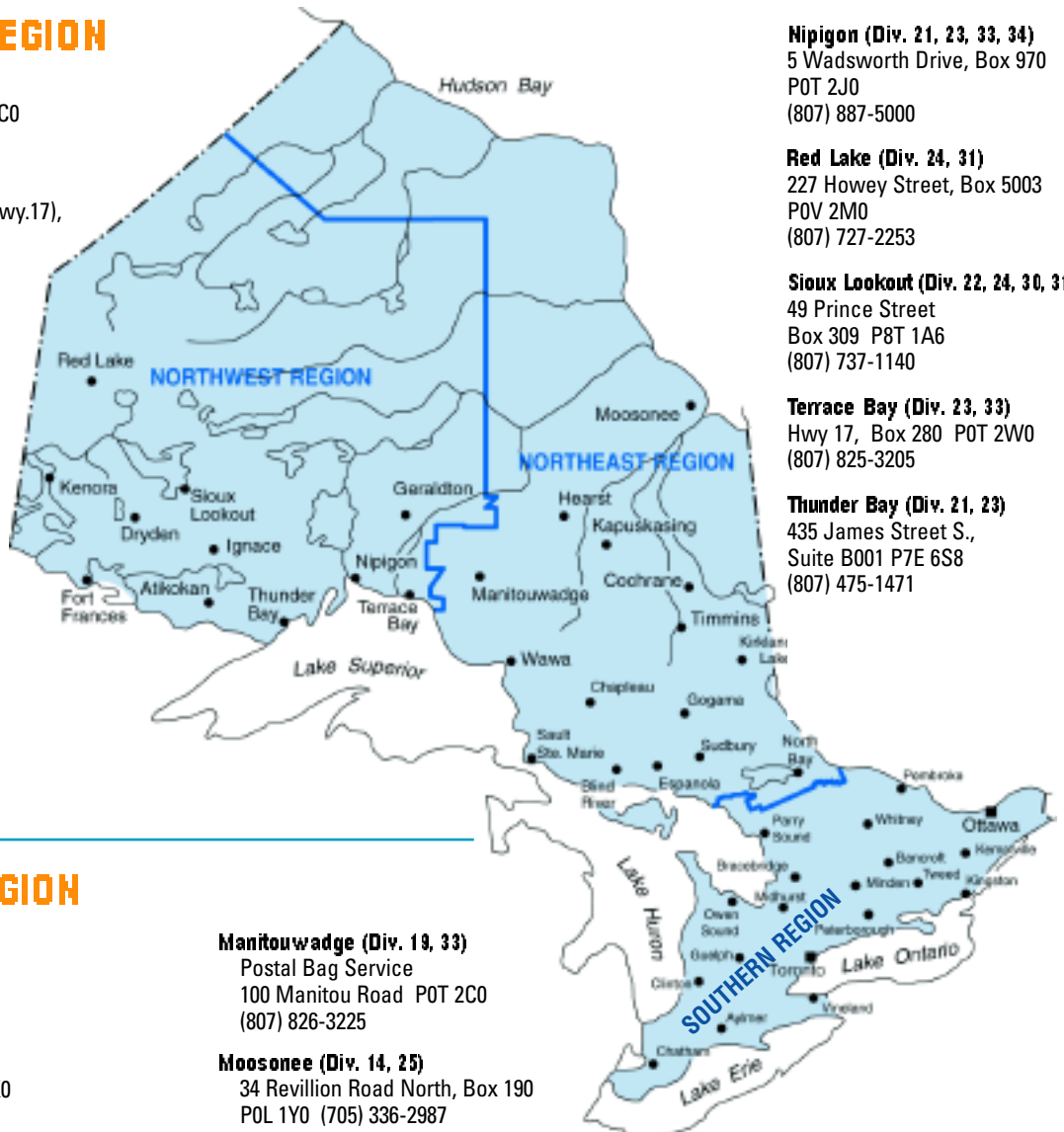
208 Beamish Avenue W.  
Box 640 POT 1M0  
(807) 854-1030

### Ignace (Div. 22)

(Corner of Hwy. 17 & 599)  
Box 448 POT 1T0  
(807) 934-2233

### Kenora (Div. 22, 22A)

808 Robertson Street,  
Box 5080 P9N 3X9  
(807) 468-2501



**Nipigon (Div. 21, 23, 33, 34)**  
5 Wadsworth Drive, Box 970  
POT 2J0  
(807) 887-5000

**Red Lake (Div. 24, 31)**  
227 Howey Street, Box 5003  
POV 2M0  
(807) 727-2253

**Sioux Lookout (Div. 22, 24, 30, 31)**  
49 Prince Street  
Box 309 P8T 1A6  
(807) 737-1140

**Terrace Bay (Div. 23, 33)**  
Hwy 17, Box 280 POT 2W0  
(807) 825-3205

**Thunder Bay (Div. 21, 23)**  
435 James Street S.,  
Suite B001 P7E 6S8  
(807) 475-1471

## NORTHEAST REGION

### Blind River (Div. 17, 18)

62 Queen Avenue,  
Box 190 P0R 1B0  
(705) 356-2234

### Chapleau (Div. 19)

190 Cherry Street POM 1K0  
(705) 864-1710

### Cochrane (Div. 19)

2 Third Avenue, Box 730 POL 1C0  
(705) 272-4365

### Espanola (Div. 15, 16, 17, 18, 28, 35)

148 Fleming Street P5E 1R8  
(705) 869-1330

### Gogama (Div. 19)

5 Low Ave. Box 129 POM 1W0  
(705) 894-2000

### Hearst (Div. 19, 25)

613 Front Street, Box 670 POL 1N0  
(705) 362-4346

### Kapuskasing (Div. 19)

R.R.2 Hwy. 11 West, Box 2 P5N 2X8  
(705) 335-6191

### Kirkland Lake (Div. 19)

10 Government Road East P.O. Box 910  
P2N 3K4 (705) 568-3222

### Manitouwadge (Div. 19, 33)

Postal Bag Service  
100 Manitou Road POT 2C0  
(807) 826-3225

### Moosonee (Div. 14, 25)

34 Revillon Road North, Box 190  
POL 1Y0 (705) 336-2987

### North Bay (Div. 12, 15, 18, 26, 27)

3301 Trout Lake Road P1A 4L7  
(705) 475-5550

### Sault Ste. Marie (Div. 17, 18, 23, 35)

64 Church Street P6A 3H3  
(705) 949-1231

### Sudbury (Div. 15, 18, 28)

3767 Hwy. 69 South, Suite 5 P3G 1E7  
(705) 564-7823

### Timmins (Div. 19)

Ontario Government Complex,  
Hwy 101 East (at Florence), P.O. Bag 3090  
South Porcupine, P0N 1H0  
(705) 235-1300

### Wawa (Div. 18, 19, 23)

160 Mission Road, Box 1160  
POS 1K0 (705) 856-2396

## GREAT LAKES MANAGEMENT UNITS

### Lake Ontario Management Unit (Div. 8)

41 Hatchery Lane, R.R. 4  
Picton, ON K0K 2T0  
(613) 476-2400

### Lake Erie Management Unit (Divs. 1 & 2)

659 Exeter Rd  
London, ON N6E 1L3  
(519) 873-4610

## Upper Great Lakes Management Units

### Lake Huron Office (Div. 16, 17 & 35)

1450 Seventh Ave. East  
Owen Sound, ON N4K 4V2  
519-371-0420

### Lake Superior Office (Div. 23)

435 James St. S., Suite 221E  
Thunder Bay, ON P7E 6S8  
807-475-1231