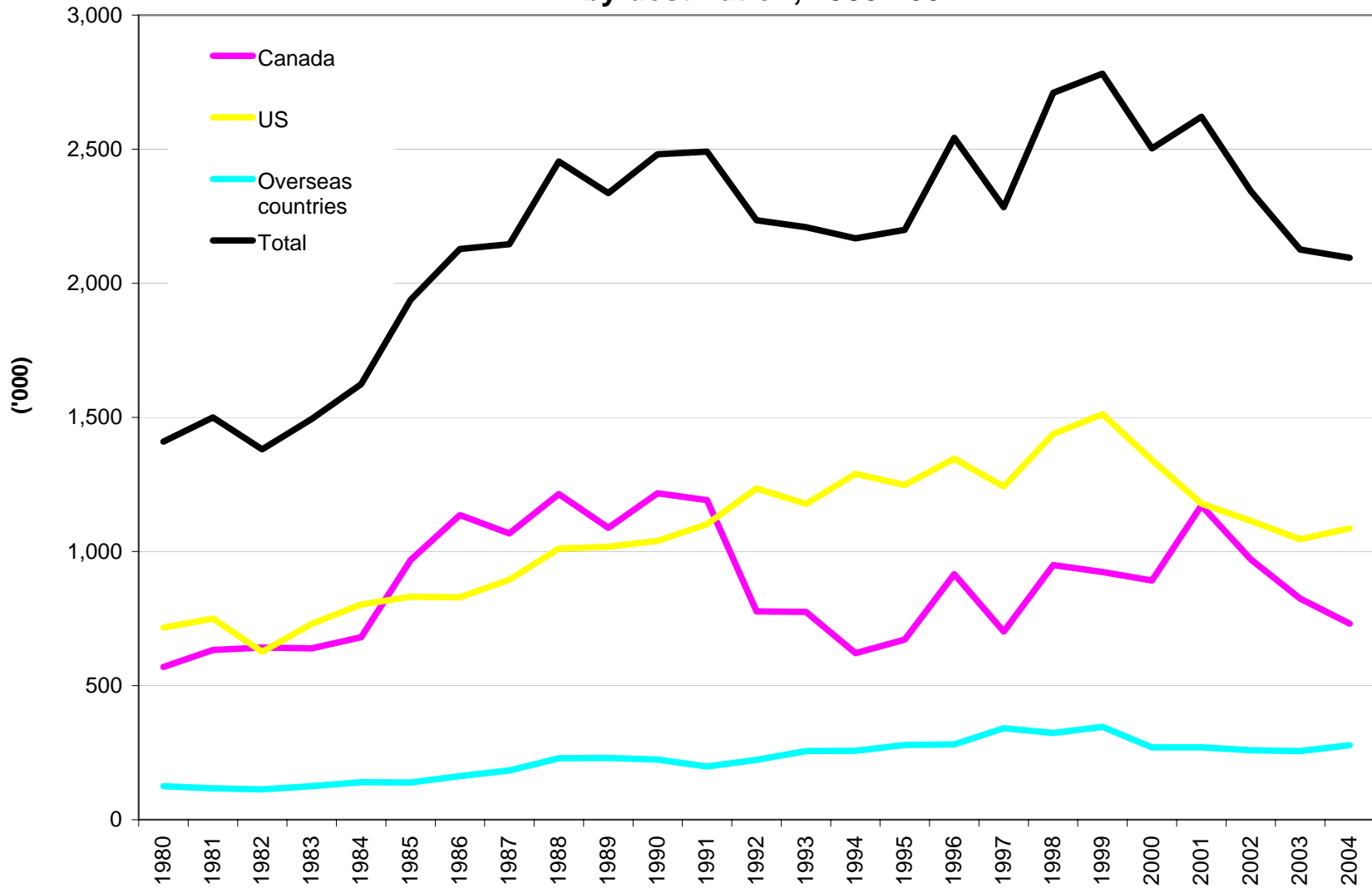


Number of Overnight Business Outbound Trips by Ontario Residents 1980-2004 ('000), by destination

	Canada	US	Overseas countries	Total
1980	569	716	125	1,410
1981	633	750	117	1,500
1982	642	626	113	1,381
1983	639	730	125	1,494
1984	681	803	140	1,624
1985	968	831	139	1,938
1986	1,136	829	163	2,128
1987	1,067	895	184	2,146
1988	1,214	1,011	229	2,454
1989	1,088	1,018	230	2,336
1990	1,217	1,040	224	2,481
1991	1,191	1,102	198	2,491
1992	777	1,235	223	2,235
1993	775	1,178	256	2,209
1994	621	1,290	257	2,168
1995	672	1,248	279	2,199
1996	916	1,346	281	2,543
1997	701	1,242	341	2,284
1998	949	1,438	323	2,710
1999	924	1,512	346	2,782
2000	892	1,341	270	2,503
2001	1,172	1,179	270	2,621
2002	970	1,114	259	2,343
2003	824	1,046	256	2,126
2004	731	1,086	278	2,095

Source: Statistics Canada, Canadian Travel Survey, International Travel Survey;
 Ontario Ministry of Tourism

**Number of Overnight Business Outbound Trips by Ontario Residents
by destination, 1980-2004**



Notes:

1. Outbound Person Trip

Refers to trip taken by one person to destinations outside of Ontario.

A **domestic trip** is defined by **Statistics Canada** as travel to a Canadian destination at least 80 km one-way from home for any reasons except: travel to and from work or school (i.e., commuting); one way travel involving a change of residence; travel of operating crew members of buses, airplanes, boats, etc; travel in an ambulance to a hospital or clinic; trips that did not originate in Canada; trips longer than a year. A same-day trip does not include a night away from home, while an overnight trip includes at least one night away from home.

An **international trip** is defined by **Statistics Canada** as travel for less than 12 months for any reason by anybody except: immigrants, former residents, military personnel, diplomats and dependants and crews, returning to Canada who is cleared through Customs and Immigration point of entry.

2. The methodology of the International Travel Survey has changed in 2000. Therefore, data prior to 2000 are not comparable to those after 2000.

3. Discrepancies are due to roundings.