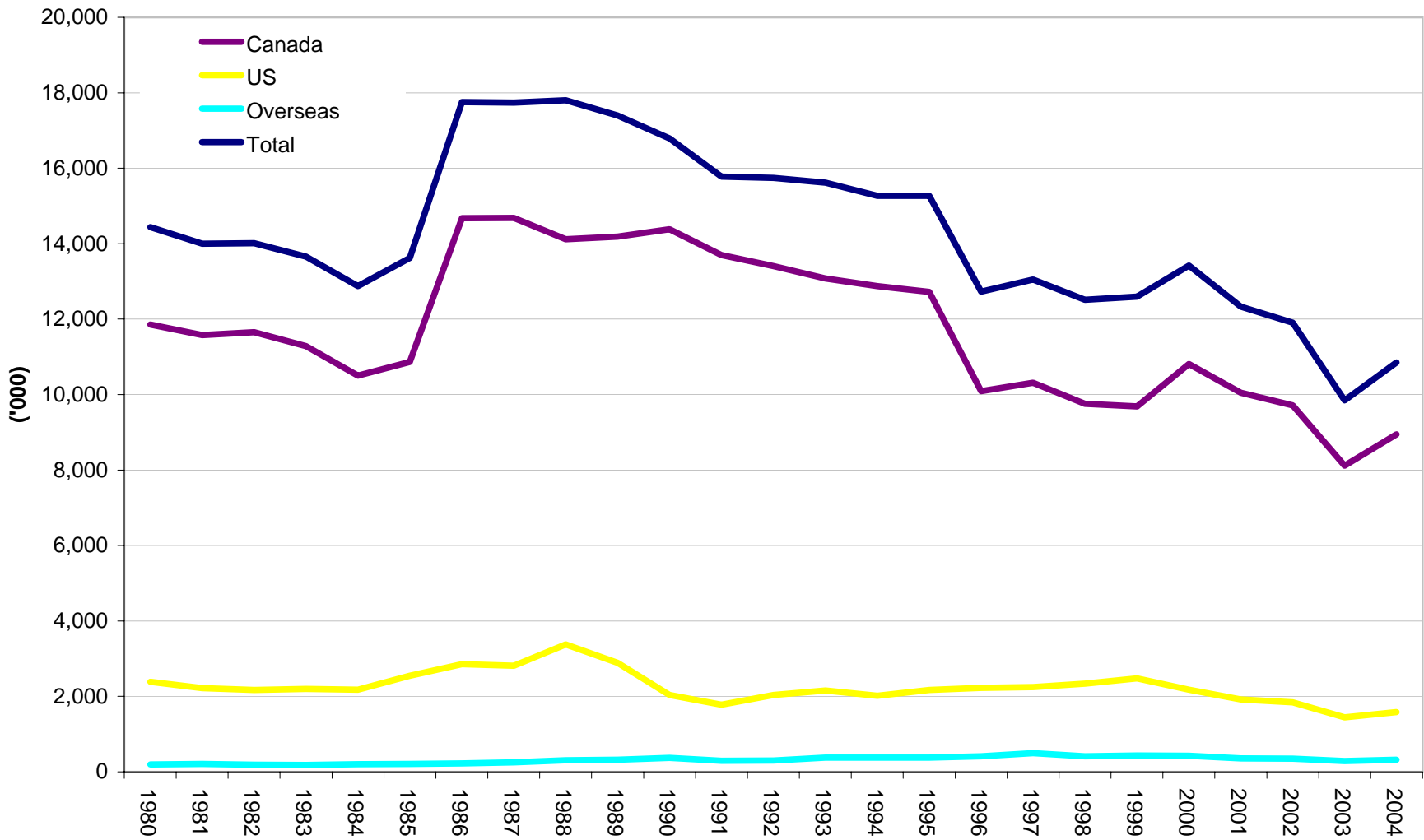


**Number of Person Visits in Ontario for Business, 1980-2004 ('000)
by origin**

	Canada	US	Overseas	Total
1980	11,858	2,388	194	14,440
1981	11,575	2,219	206	14,000
1982	11,652	2,169	191	14,012
1983	11,286	2,195	179	13,660
1984	10,499	2,177	200	12,876
1985	10,866	2,546	211	13,623
1986	14,674	2,857	223	17,754
1987	14,680	2,812	249	17,741
1988	14,119	3,381	305	17,805
1989	14,185	2,888	324	17,397
1990	14,381	2,041	368	16,790
1991	13,702	1,780	293	15,775
1992	13,407	2,037	301	15,745
1993	13,080	2,158	378	15,616
1994	12,876	2,015	377	15,268
1995	12,724	2,168	378	15,270
1996	10,093	2,224	411	12,728
1997	10,311	2,245	496	13,052
1998	9,756	2,341	415	12,512
1999	9,688	2,476	431	12,595
2000	10,812	2,175	429	13,416
2001	10,052	1,920	356	12,328
2002	9,715	1,843	350	11,908
2003	8,118	1,445	284	9,847
2004	8,943	1,587	323	10,853

Source: Statistics Canada, Canadian Travel Survey, International Travel Survey;
 Ontario Ministry of Tourism

Number of Person Visits in Ontario for Business, by origin, 1980-2004



Notes:

1. Person-visits

All persons visiting an area during their **trips** are registered as having made one person-visit.

Person-visits in Ontario refer to Canadian or international residents who have a visit in Ontario irrespective of the destination of the trip.

All the travel data released by the Ontario Ministry of Tourism adopt a different definition of "trip" than that used by Statistics Canada for domestic trips and for international trips to Ontario.

A **domestic trip** is defined by **Statistics Canada** as travel to a Canadian destination at least 80 km one-way from home for any reasons except: travel to and from work or school (i.e., commuting); one way travel involving a change of residence; travel of operating crew members of buses, airplanes, boats, etc; travel in an ambulance to a hospital or clinic; trips that did not originate in Canada; trips longer than a year. A same-day trip does not include a night away from home, while an overnight trip includes at least one night away from home.

In addition, Ontario imposes the restriction that the same day visitors from Ontario must have travelled at least 40 km one-way from home in order to reach their destination, while same day visitors from other parts of Canada must have travelled 80 kms or more one-way away from home. Ontario does not impose any restrictions on overnight travellers with respect to the minimum distance travelled to reach their destination.

An **international trip** is defined by **Statistics Canada** as travel for less than 12 months for any reason by anybody except: immigrants, former residents, military personnel, diplomats and dependants and crews, arriving or returning Canada who is cleared through Customs and Immigration point of entry.

In addition to the restrictions imposed in the above definition, the Ontario Ministry of Tourism also excludes commuters to work and to schools.

2. The methodology of the International Travel Survey has changed in 2000. Therefore, data prior to 2000 are not comparable to those after 2000.

3. Discrepancies are due to roundings.