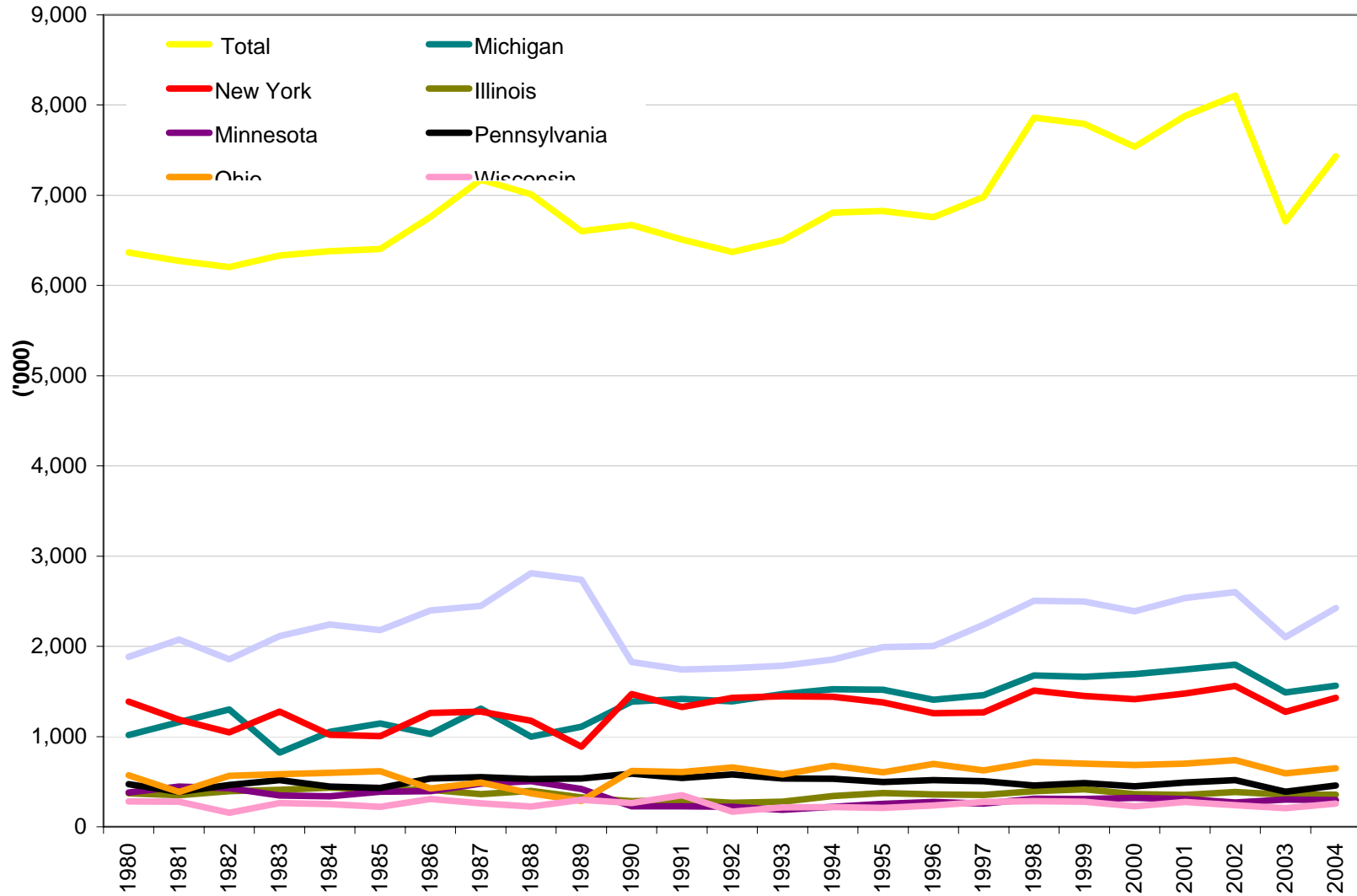


**Overnight Visits in Ontario by US Residents, 1980-2004 ('000)**  
 by origin

	<b>Total</b>	<b>Michigan</b>	<b>New York</b>	<b>Illinois</b>	<b>Minnesota</b>	<b>Pennsylvania</b>	<b>Ohio</b>	<b>Wisconsin</b>	<b>Other States</b>
1980	6,366	1,017	1,387	372	381	473	570	282	1,885
1981	6,273	1,161	1,188	349	447	387	387	278	2,075
1982	6,205	1,300	1,047	394	428	463	565	154	1,856
1983	6,333	821	1,277	409	347	518	584	262	2,115
1984	6,382	1,053	1,019	435	337	445	599	252	2,242
1985	6,403	1,146	1,005	417	389	430	615	220	2,181
1986	6,761	1,028	1,263	410	395	536	425	308	2,398
1987	7,174	1,309	1,277	363	477	550	489	261	2,448
1988	7,011	998	1,176	397	506	529	370	224	2,811
1989	6,602	1,110	887	326	419	534	286	299	2,740
1990	6,670	1,388	1,470	284	227	589	619	264	1,827
1991	6,510	1,418	1,329	295	228	541	608	349	1,743
1992	6,371	1,389	1,430	265	220	581	658	168	1,759
1993	6,501	1,471	1,447	278	188	534	581	216	1,785
1994	6,808	1,525	1,440	342	220	531	676	218	1,855
1995	6,826	1,518	1,379	373	254	497	603	210	1,992
1996	6,756	1,407	1,259	360	276	516	696	237	2,004
1997	6,983	1,460	1,269	354	256	504	626	275	2,239
1998	7,860	1,678	1,511	396	310	458	719	283	2,505
1999	7,792	1,661	1,449	415	308	484	700	277	2,497
2000	7,537	1,693	1,413	363	319	448	686	226	2,389
2001	7,879	1,742	1,476	354	307	491	699	276	2,535
2002	8,107	1,796	1,560	387	268	516	739	240	2,601
2003	6,709	1,488	1,273	356	302	390	593	206	2,101
2004	7,434	1,564	1,428	357	296	457	649	258	2,425

Source: Statistics Canada, International Travel Survey  
 Ontario Ministry of Tourism

Overnight Visits in Ontario by US Residents, by origin, 1980-2004



**Notes:**

1. Person-visit

Same-day or overnight visit made by a foreign traveller taking a trip.

All the travel data released by the Ontario Ministry of Tourism adopt a different definition of "trip" than that used by Statistics Canada for international trips to Ontario.

An **international trip** is defined by **Statistics Canada** as travel for less than 12 months for any reason by anybody except: immigrants, former residents, military personnel, diplomats and dependants and crews, arriving Canada who is cleared through Customs and Immigration point of entry.

In addition to the restrictions imposed in the above definition, the Ontario Ministry of Tourism also excludes commuters to work and to schools.

2. The methodology of the International Travel Survey has changed in 2000. Therefore, data prior to 2000 are not comparable to those after 2000.

3. Discrepancies are due to roundings.