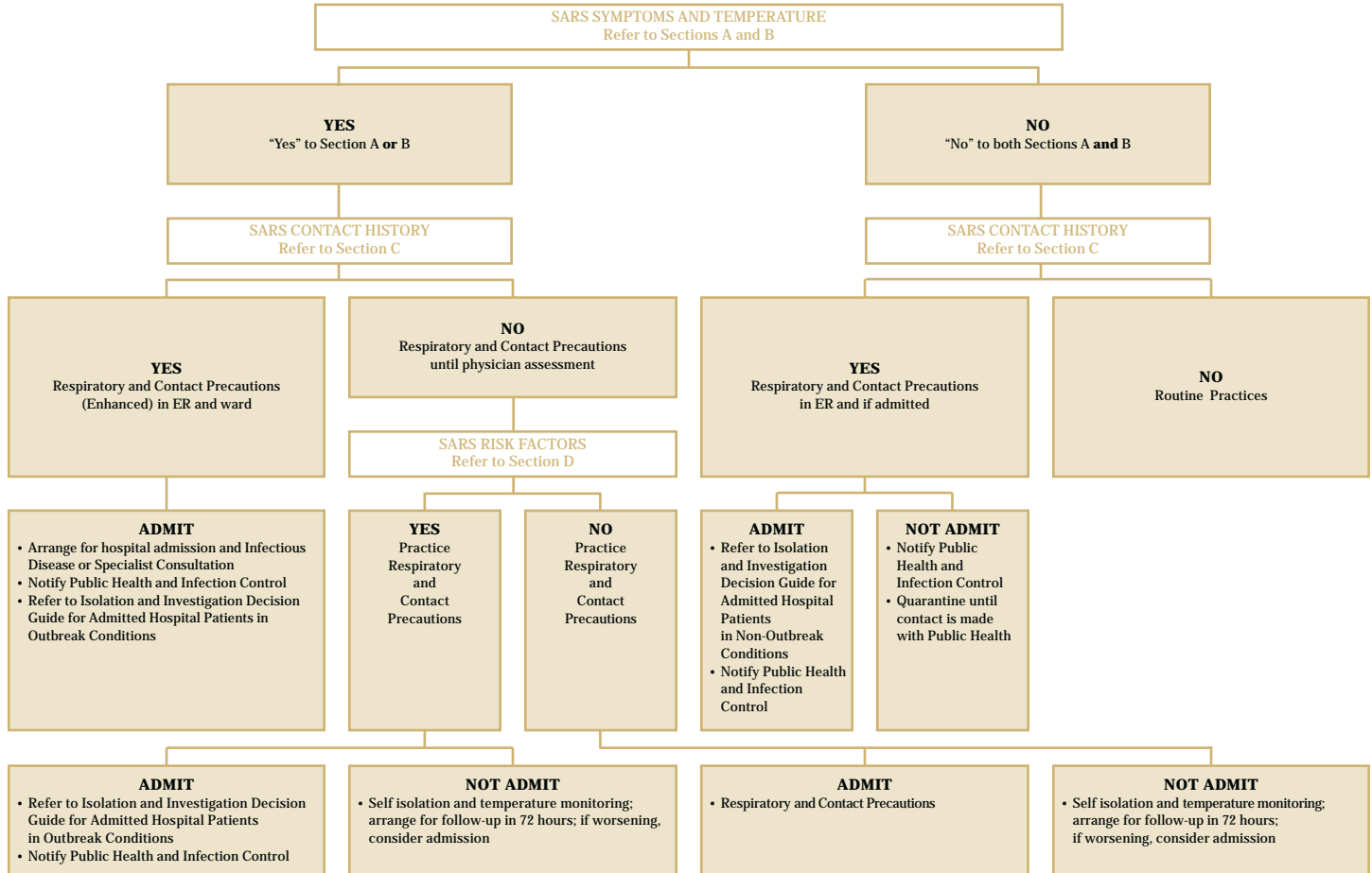


SARS Risk Management Algorithm

For Emergency Departments and Other Departments that Admit Patients
 Febrile Respiratory Illness or Intensive Hospital Surveillance under Outbreak Conditions

For Section Descriptions see:
 SARS Risk Factor Screening Tool



This Algorithm is intended to be used in conjunction with, and not in place of, the directives as issued by Ontario's Ministry of Health and Long-Term Care.